

L A R I V E 3

PORT
de La
MILR

||| MERAAS





M E R A A S

*a leading
developer
in Dubai*

Meraas is dedicated to making Dubai and the UAE better for people to live, work and play, connecting people with lifestyle opportunities at some of Dubai's most sought-after addresses. Modern residences at City Walk, Bluewaters, Jumeira Bay, Pearl Jumeira and

La Mer are exquisitely designed with the aim of stimulating a creative urban culture where thriving communities can take root. Our investments in food, retail, leisure, hotels, health and real estate are also ensuring a better future for generations to come.



*experience
a truly world-class
beachfront at La Mer*

La Mer is a world-class beachfront set within the prestigious Jumeirah 1 neighbourhood. The destination incorporates a minimalist and contemporary design with a mix of dining, shopping, leisure, entertainment and hospitality experiences; a residential community and 2.5 kilometres of relaxing beaches. La Mer also benefits from excellent connectivity to the popular locations in city, as well as its international airports.

PORT DE LA MER

the first freehold master community in Jumeirah

Inspired by the shores of the Mediterranean, Port De La Mer offers more than just a prime marine promenade and easygoing waterfront lifestyle. This island destination has so much more.

- 400 berth marina and yacht club
- 5-star hospitality experiences
- Swims and tennis promenades overlooking Pheel Jumeira
- Beach access
- Fashionable boutique restaurants and cafes
- Magnificent swimming pools
- Outdoor park with kids play areas
- Private landscaped terraces
- Excellent private facilities and amenities
- Controlled vehicle access



A woman in a white dress stands on a balcony with a black metal railing, overlooking a marina filled with sailboats and a city skyline. The balcony has a wooden pergola roof and outdoor furniture. The text "magnificent views of the sea and Dubai skyline" is overlaid on the right side of the image.

*magnificent views of the sea
and Dubai skyline*



CONNECTIVITY

*travel around
the city and
beyond with ease*

Port de La Mer can be reached by road and sea, meaning residents can take in the spectacular coastline at their leisure, be at one of the city's famous shopping malls in minutes or be boarding a flight to more than 240 destinations in next to no time. Residences at Port de La Mer are within 10-minutes from La Mer and City Walk, a lifestyle destination by Meraas, with great road links to the city's two airports.

- 5 min – La Mer by Meraas
- 10 mins – City Walk by Meraas
- 15 min – Dubai International Airport
- 45 min – Al Maktoum International Airport





PORT OF THE MER

PORT OF THE MER

BVLGARI
ALL YOU NEED IS PALM

CITY WALK

PORT OF THE MER

SHEIKH ZAYED ROAD

AL KHAIL ROAD

EMIRATES ROAD

Dubai Harbour

ZARIF SARAY
THE ELEGANT

BLUE WATERS

A M E N I T I E S

*unmatched
facilities at your
doorstep*

Residential amenities including large swimming pools, a gym, beach and marina access. Hotels, retail outlets and restaurants, all conveniently nestled along the waterfront, will infuse energy and vitality to life at Port de La Mer. A central podium, bustling piazzas and conveniently located bridges will help knit this picturesque setting together and allow residents to move freely throughout inviting open spaces.





L A R I V E

*live for moments
that you can't
put into words*

With winding walkways, lush green terraces and views that dreams are made of, La Rive at Port de La Mer is truly one-of-a-kind. With a world-class marina and hospitality experiences, along with unmatched amenities, this island getaway is perfect for those who enjoy the finer things in life. Choose from a spectacular selection of 1, 2, 3, 4, and 5-bedroom apartments.



MASTER PLAN



A large, elegant, light-colored swirl graphic that starts from the bottom left, loops around the right side, and ends at the top right, framing the central text.

PORT
de la
MILR

FLOOR PLANS
BUILDING 3

PORT DE LA MER
La Rive

1 BEDROOM APARTMENT TYPE 1
BUILDING 3 - LEVEL 2, 3, 4, 5



LEVEL 5



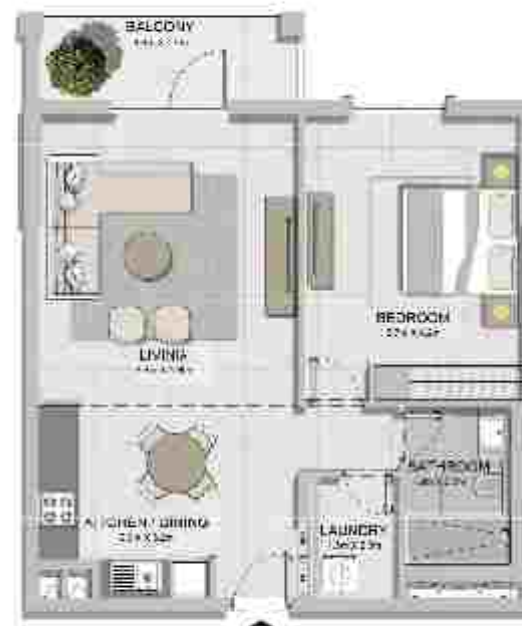
LEVEL 4



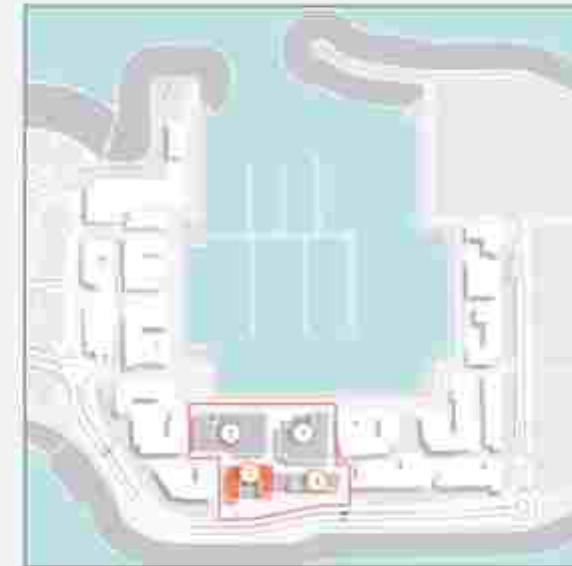
LEVEL 3



LEVEL 2



| UNIT NO. | SUITE AREA | | BALCONY AREA | | TOTAL AREA | |
|-----------------|------------|------|--------------|------|------------|------|
| | SQM | SQFT | SQM | SQFT | SQM | SQFT |
| 204 / 304 / 303 | 65.83 | 710 | 7.17 | 77 | 75.80 | 818 |
| 205 / 305 / 304 | 68.82 | 741 | 7.17 | 77 | 75.05 | 815 |
| 206 / 207 / 306 | 69.83 | 751 | 7.17 | 77 | 75.00 | 815 |
| 307 / 405 / 406 | | | | | | |
| 407 | | | | | | |



LEVEL 1



| UNIT NO. | SUITE AREA | | BALCONY AREA | | TOTAL AREA | |
|-----------|------------|------|--------------|------|------------|------|
| | SQM | SQFT | SQM | SQFT | SQM | SQFT |
| 104 | 66.63 | 720 | 13.51 | 145 | 82.14 | 884 |
| 105 | 66.82 | 721 | 13.82 | 149 | 82.54 | 890 |
| 106 / 107 | 66.82 | 721 | 13.76 | 148 | 82.51 | 889 |



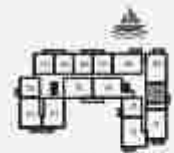
LEVEL 5



LEVEL 4



LEVEL 3



LEVEL 2



| UNIT NO. | | | SUITE AREA | | BALCONY AREA | | TOTAL AREA | |
|----------|-----|-----|------------|------|--------------|------|------------|------|
| | | | SQM | SQFT | SQM | SQFT | SQM | SQFT |
| 210 | 310 | 410 | 69.21 | 745 | 4.57 | 49 | 73.78 | 794 |



LEVEL 5



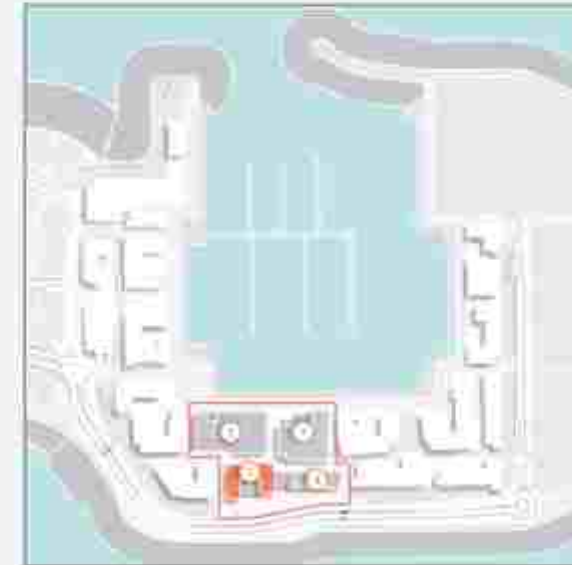
LEVEL 4



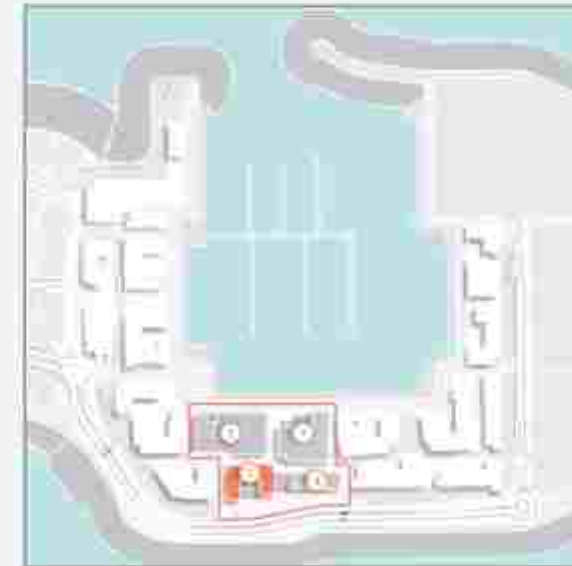
LEVEL 3



LEVEL 2



| UNIT NO. | SUITE AREA | | BALCONY AREA | | TOTAL AREA | | | |
|----------|------------|------|--------------|------|------------|------|-------|-----|
| | SQM | SQFT | SQM | SQFT | SQM | SQFT | | |
| 203 | 303 | 403 | 68.91 | 742 | 4.57 | 49 | 73.48 | 791 |



LEVEL 1



| UNIT NO. | SUITE AREA | | BALCONY AREA | | TOTAL AREA | |
|----------|------------|------|--------------|------|------------|------|
| | SQM | SQFT | SQM | SQFT | SQM | SQFT |
| 105 | 66.81 | 742 | 20.06 | 216 | 86.87 | 958 |



LEVEL 5



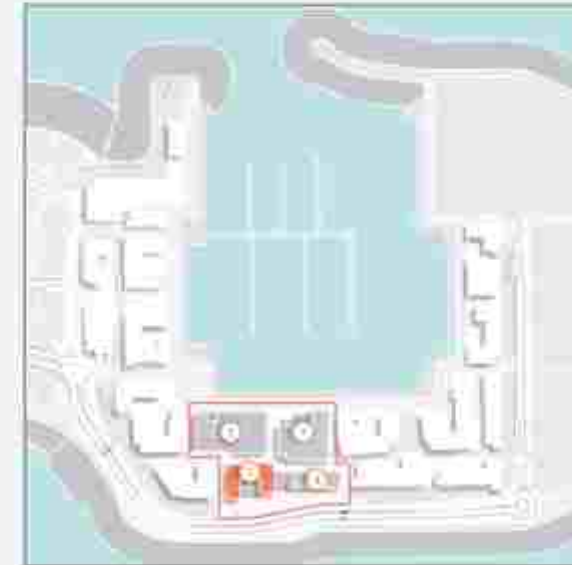
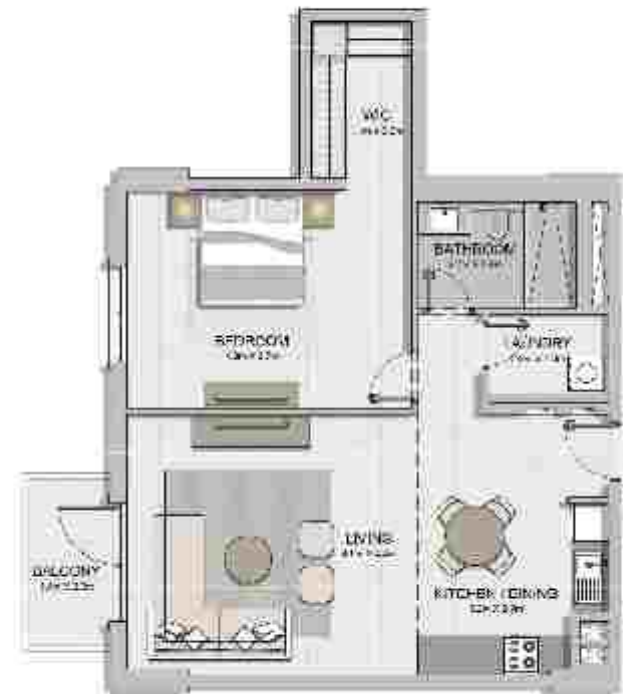
LEVEL 4



LEVEL 3



LEVEL 2



| UNIT NO.: | | | SUITE AREA | | BALCONY AREA | | TOTAL AREA | |
|-----------|-----|-----|------------|------|--------------|------|------------|------|
| | | | SQM | SQFT | SQM | SQFT | SQM | SQFT |
| 312 | 313 | 511 | 74.38 | 801 | 4.57 | 49 | 78.95 | 850 |
| 413 | | | 74.34 | 800 | 4.57 | 49 | 78.91 | 849 |

PORT DE LA MER
La Rive

2 BEDROOM APARTMENT TYPE 1
BUILDING 3 - LEVEL 1, 2, 3, 4, 5



LEVEL 5



LEVEL 4



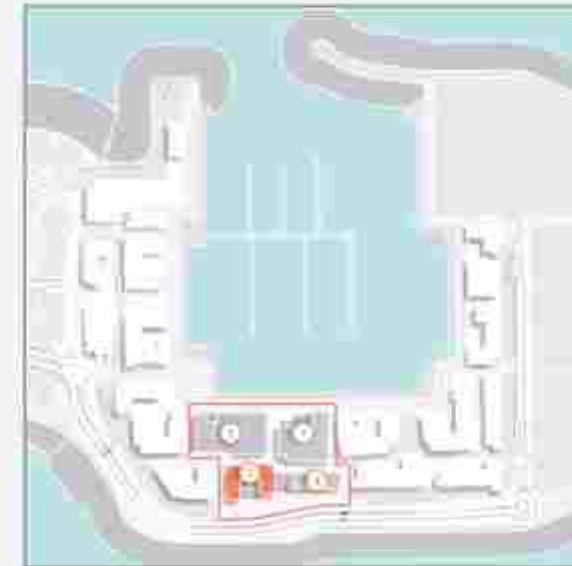
LEVEL 3



LEVEL 2



LEVEL 1

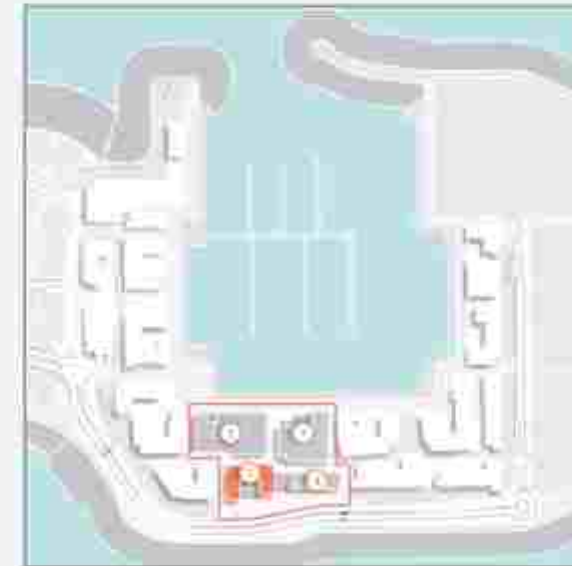


| UNIT NO. | | SUITE AREA | | BALCONY AREA | | TOTAL AREA | | |
|----------|-----|------------|--------|--------------|------|------------|--------|------|
| | | SQM | SQFT | SQM | SQFT | SQM | SQFT | |
| 112 | 513 | 104.61 | 1126 | 8.44 | 91 | 113.05 | 1217 | |
| 209 | 308 | 409 | 104.27 | 1132 | 8.34 | 90 | 112.61 | 1212 |
| 215 | 315 | 415 | 104.61 | 1126 | 8.44 | 91 | 113.05 | 1217 |

PORT DE LA MER
La Rive

2 BEDROOM
BUILDING 3

APARTMENT TYPE 1A
LEVEL 1



LEVEL 1



| UNIT NO. | SUITE AREA | | BALCONY AREA | | TOTAL AREA | |
|----------|------------|------|--------------|------|------------|------|
| | SQM | SQFT | SQM | SQFT | SQM | SQFT |
| 106 | 104.27 | 1122 | 10.42 | 112 | 116.77 | 1472 |

MERAAS

ALL DIMENSIONS IN THIS FLOOR PLAN ARE APPROXIMATE AND SUBJECT TO CHANGE. THE DEVELOPER SHALL NOT BE RESPONSIBLE FOR ANY DISCREPANCY BETWEEN THE DIMENSIONS SHOWN IN THIS FLOOR PLAN AND THE ACTUAL DIMENSIONS OF THE UNIT. THE DIMENSIONS SHOWN IN THIS FLOOR PLAN ARE APPROXIMATE AND SUBJECT TO CHANGE. THE DEVELOPER SHALL NOT BE RESPONSIBLE FOR ANY DISCREPANCY BETWEEN THE DIMENSIONS SHOWN IN THIS FLOOR PLAN AND THE ACTUAL DIMENSIONS OF THE UNIT.



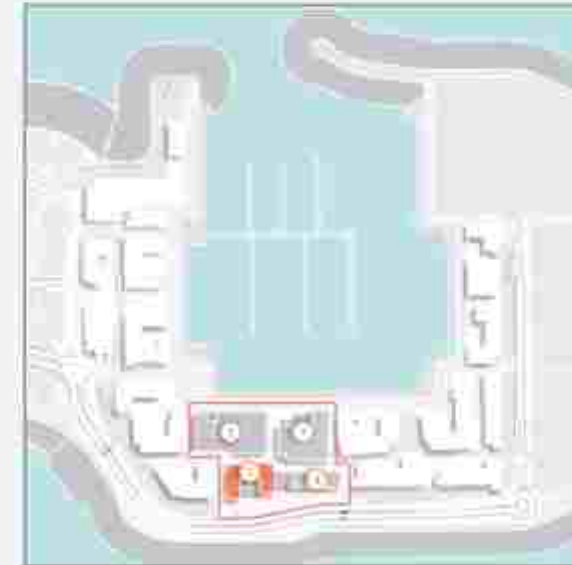
LEVEL 4



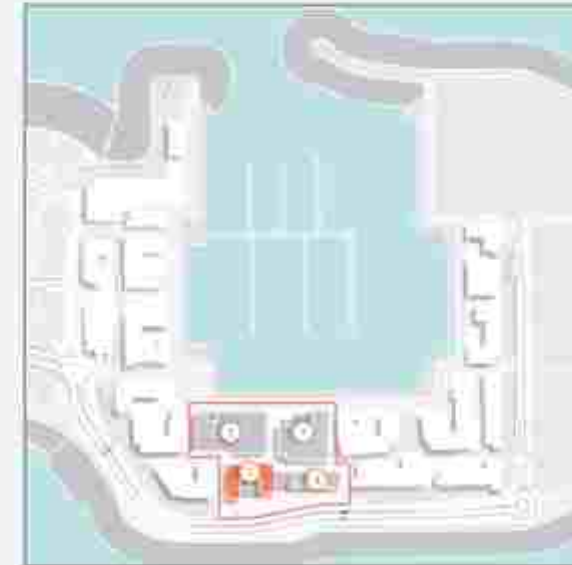
LEVEL 3



LEVEL 2



| UNIT NO. | SUITE AREA | | BALCONY AREA | | TOTAL AREA | |
|-------------|------------|------|--------------|------|------------|------|
| | SQM | SQFT | SQM | SQFT | SQM | SQFT |
| 211 311 411 | 104.16 | 1121 | 6.34 | 68 | 112.50 | 1211 |



LEVEL 1

| UNIT NO. | SUITE AREA | | BALCONY AREA | | TOTAL AREA | |
|----------|------------|------|--------------|------|------------|------|
| | SQM | SQFT | SQM | SQFT | SQM | SQFT |
| 109 | 104.18 | 1121 | 26.07 | 282 | 132.22 | 1423 |



LEVEL 4



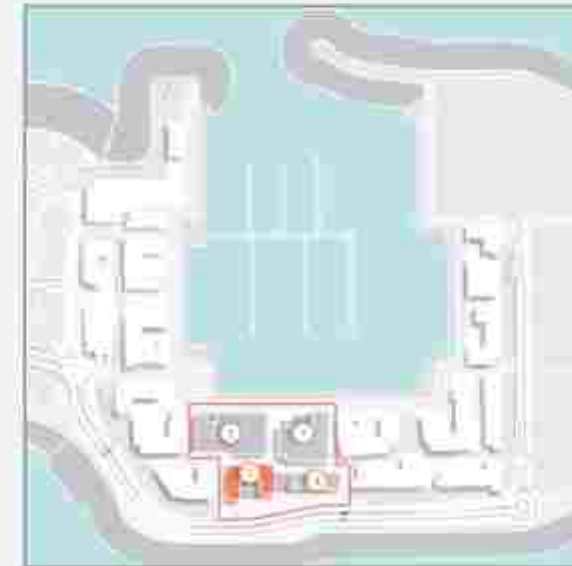
LEVEL 3



LEVEL 2



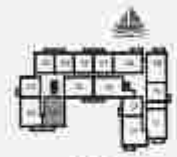
LEVEL 1



| UNIT NO. | SUITE AREA | | BALCONY AREA | | TOTAL AREA | |
|---------------|------------|------|--------------|------|------------|------|
| | SQM | SQFT | SQM | SQFT | SQM | SQFT |
| 110, 212, 312 | 116.42 | 1255 | 8.34 | 90 | 124.76 | 1345 |



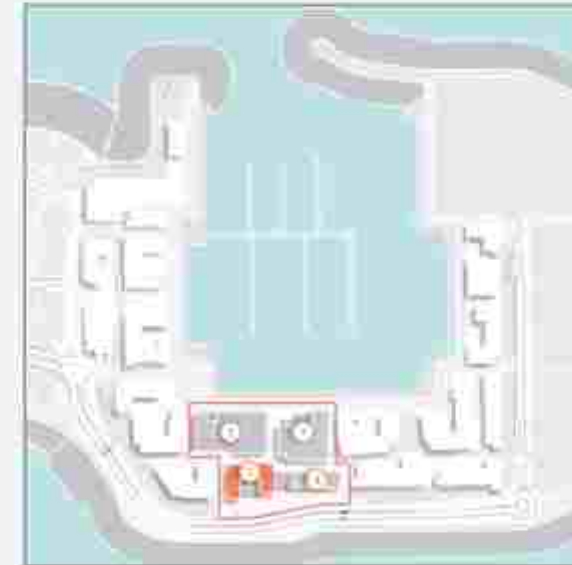
LEVEL 4



LEVEL 3



LEVEL 2

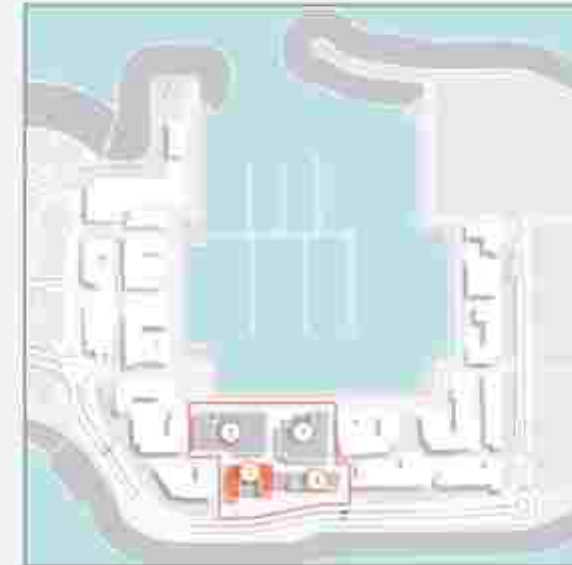


| UNIT NO. | SUITE AREA | | BALCONY AREA | | TOTAL AREA | |
|---------------|------------|------|--------------|------|------------|------|
| | SQM | SQFT | SQM | SQFT | SQM | SQFT |
| 201, 301, 401 | 109.10 | 1174 | 9.19 | 99 | 118.29 | 1273 |

PORT DE LA MER
La Rive

2 BEDROOM
BUILDING 3

APARTMENT TYPE 4A
LEVEL 1



LEVEL 1



| UNIT NO. | SUITE AREA | | BALCONY AREA | | TOTAL AREA | |
|----------|------------|------|--------------|------|------------|------|
| | SQM | SQFT | SQM | SQFT | SQM | SQFT |
| 101 | 108.10 | 1174 | 12.77 | 135 | 126.87 | 1306 |

MERAAS

NOT LIABLE FOR MISC. CHANGES. ALL SPECIFICATIONS AND AREAS SUBJECT TO CHANGE AT THE DEVELOPER'S DISCRETION WITHOUT NOTICE. ALL RIGHTS RESERVED. MERAAS IS A REGISTERED TRADEMARK OF MERAAS REAL ESTATE DEVELOPMENT PVT. LTD. ALL RIGHTS RESERVED.

PORT DE LA MER
La Rive

2 BEDROOM
BUILDING 3

APARTMENT TYPE 5
LEVEL 1



LEVEL 1

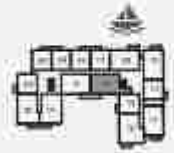
| UNIT NO. | SUITE AREA | | BALCONY AREA | | TOTAL AREA | |
|----------|------------|------|--------------|------|------------|------|
| | SQM | SQFT | SQM | SQFT | SQM | SQFT |
| 111 | 118.86 | 1278 | 4.44 | 91 | 127.29 | 1370 |

MERAAS

THIS FLOOR PLAN IS FOR INFORMATIONAL PURPOSES ONLY AND IS SUBJECT TO CHANGE. THE DEVELOPER SHALL NOT BE RESPONSIBLE FOR ANY DISCREPANCY BETWEEN THIS FLOOR PLAN AND THE ACTUAL APARTMENT. THE ACTUAL APARTMENT SHALL BE SUBJECT TO THE FINAL APPROVAL BY THE RELEVANT AUTHORITIES. ALL DIMENSIONS ARE IN METERS UNLESS OTHERWISE SPECIFIED.



LEVEL 5



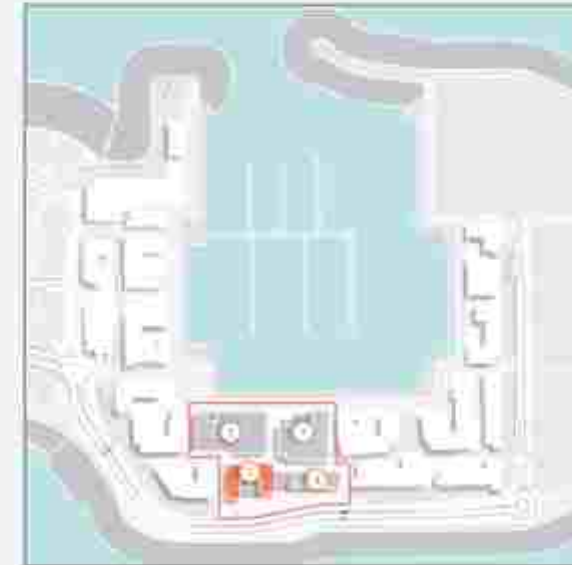
LEVEL 4



LEVEL 3



LEVEL 2



| UNIT NO. | SUITE AREA | | BALCONY AREA | | TOTAL AREA | | | |
|----------|------------|------|--------------|------|------------|------|--------|------|
| | SCM | SOFT | SCM | SOFT | SCM | SOFT | | |
| 214 | 314 | 414 | 112.50 | 1222 | 8.44 | 91 | 121.94 | 1315 |



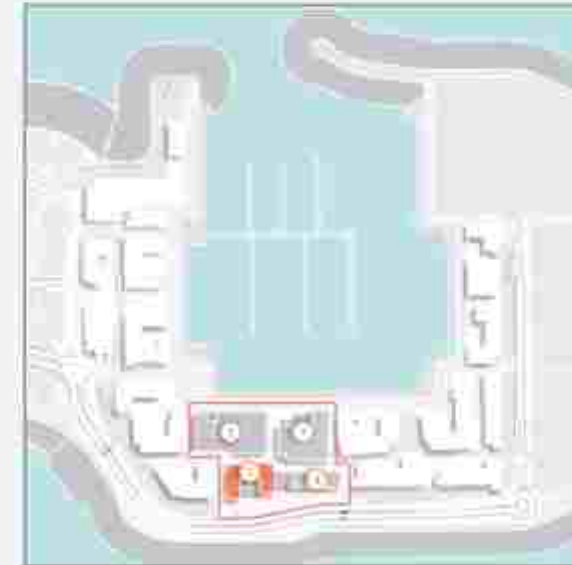
LEVEL 4



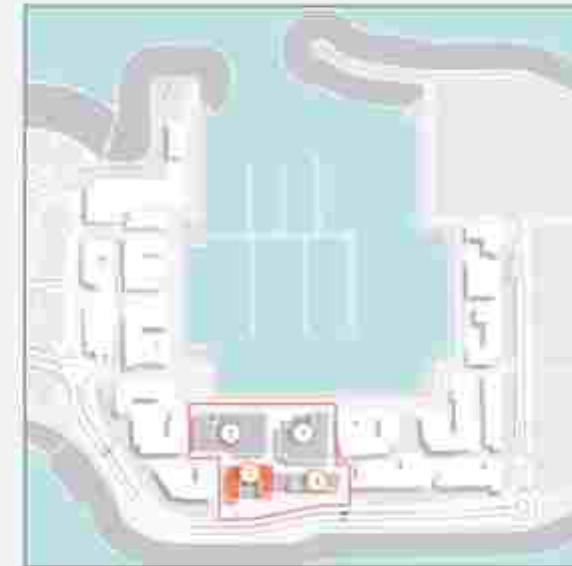
LEVEL 3



LEVEL 2



| UNIT NO. | SUITE AREA | | BALCONY AREA | | TOTAL AREA | |
|-----------------|------------|------|--------------|------|------------|------|
| | SQM | SQFT | SQM | SQFT | SQM | SQFT |
| 202 - 302 - 402 | 109.10 | 1174 | 9.19 | 99 | 118.29 | 1273 |



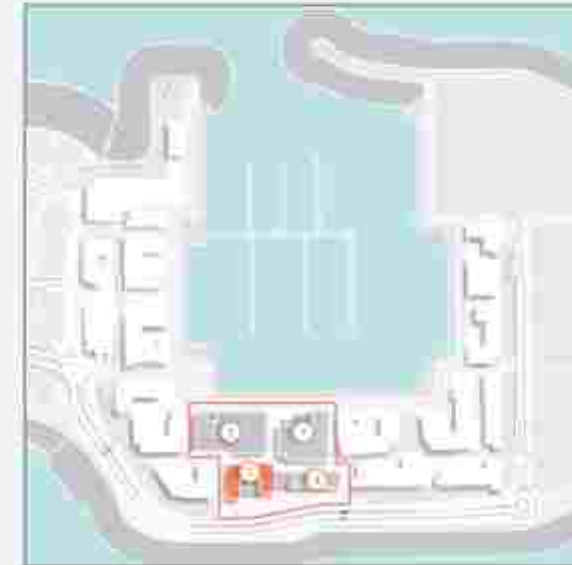
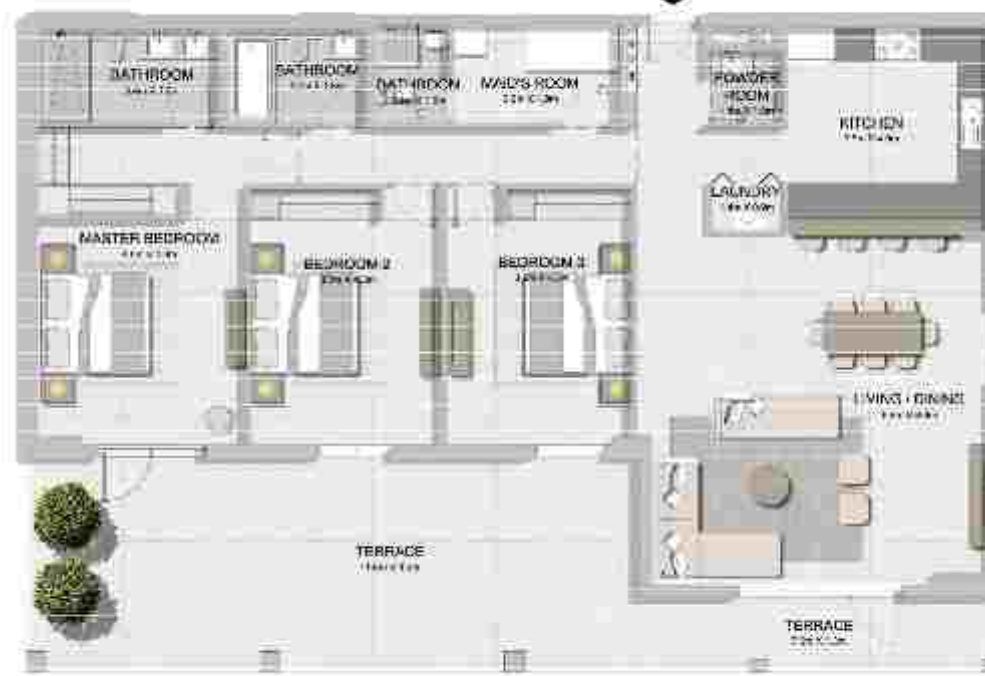
LEVEL 1



| UNIT NO. | SUITE AREA | | BALCONY AREA | | TOTAL AREA | |
|----------|------------|------|--------------|------|------------|------|
| | SQM | SQFT | SQM | SQFT | SQM | SQFT |
| 102 | 109.10 | 1174 | 52.51 | 563 | 161.61 | 1737 |



| UNIT NO. | SUITE AREA | | BALCONY AREA | | TOTAL AREA | |
|----------|------------|------|--------------|------|------------|------|
| | SQM | SQFT | SQM | SQFT | SQM | SQFT |
| 510 | 182.89 | 1969 | 60.45 | 651 | 243.34 | 2619 |



LEVEL 5



| UNIT NO. | SUITE AREA | | BALCONY AREA | | TOTAL AREA | |
|----------|------------|------|--------------|------|------------|------|
| | SQM | SQFT | SQM | SQFT | SQM | SQFT |
| 501 | 175.84 | 1893 | 31.55 | 344 | 207.40 | 2556 |



PORT
de la
MER

CONTACT US

Toll Free : 800 37373

Hotline : +971 52 754 3244

Email: sales@drehomes.com

Visit Us For More Info:-

<https://drehomes.com/property/la-rive-at-port-de-la-mer/>