

IN
NER
CITY
LIV
ING

blvd.

بوليفارد



blvd.



CO N TE NT

المحتويات

الشارقة Sharjah	09	استجمام لافتهي Relax	27
أراد Arada	10	ترفيه لأمحود Play	33
الطاحة Ajada	13	طابوليفارد The Boulevard	34
موقع استراتيجي Connectivity	14	مخططات الطابق Floor Plans	44
رفاهية استثنائية Live	17	مخططات الوحدات Unit Plans	50
نشاط متواصل Work	21	حقائق وأرقام Key Facts	67



منابع العز



زيت الجزيرة بنا من اوكواب
البحر بقلعة العرب فاقومى
ها لبحر اليوم بدأ
لبحر القلعة الى البحر
تكونين حيا في الدنيا
باصمة القلعة لكل البواوير
منلو العز كم واهتدي
عن سعيد لكي ان شتم
ياحوي تبارك الطهر الله
باليه مستودع الى المنور

بناح صاحب السمو الشيخ الدكتور
ساطان بن محمد القاسمي
عضو المجلس الاعلى حاكم الامارة

“حرياً أن نرى الخطى وثيرة الهمة العيون والشفقة
 الأمانة التي تتميز بها إمارة الشارقة إلى حيث امتدنا
 بالأسس، مجتمع عظيم يتطلع فيه نحو مستقبل
 أفضل لأجيالنا القادمة، ومن هنا فقد ما كنا ننو
 النظام المستوحاة من أديان المدينة القديمة وطابع
 للفقر المتناثرة الفلكية الضيقة التي كانت تمثل
 لقد حققنا من المنحى التحول والمستقبل المشرق”

“تجسد مشروع الجادة روح استعادة الأحياء ويعكس
 مستشارها المصهور، حيث سيجت الطاقون فيها شعراً
 الزاهم وشعوراً بالانتماء المكان والزمن، وهذا ما يفسر
 الجادة من حيث أنها لم تفسسها ليحفظ سكانها
 وروحها بل ما يرسون فيه ضمن مجتمع متكامل
 وبني حيوية وشاعراً يواكب أهم جميع متطلبات
 الحياة المعاصرة”

صاحب السمو الملكي الأمير خالد

بن الوليد بن طلال

رئيس مجلس إدارة أراجدا

سعادة الشيخ سلطان

بن أحمد القاسمي

رئيس مجلس إدارة أراجدا

“Ajada is a community that truly represents the
 spirit and future of Sharjah. You will find what
 inspires and motivates you right at your doorstep.
 This is what makes Ajada special as it enables
 you to be the best that you can be.”

“Ajada is a development that stays true to its
 roots embodying the heritage of Sharjah while
 looking forward to the future. With design
 elements that draw inspiration from Sharjah’s
 oldest neighbourhoods to environmentally
 friendly building standards, it represents the
 best of both worlds.”

**HE Sheikh Sultan
 bin Ahmed Al Qasimi**

Chairman of Ajada

**HRH Prince Khaled
 bin Alwaleed bin Talal**

Vice Chairman of Ajada





Sharjah

Steeped in history and heritage, Sharjah's fast-growing economy is one of the most diversified in the Middle East. Widely recognised as the cultural capital of the Arab world, Sharjah is a thriving business destination, with start-ups, national powerhouses and multinationals all proud to call the Emirate their home.

Sharjah's reputation as a welcoming city is enhanced by its strong and secure community, well complemented by its incredible arts, leisure and educational facilities. Sharjah City is a hub of learning, welcoming young people from all over the world to study a wide range of challenging courses that provide a direct link to excellent job opportunities.

This year, Sharjah has been named UNESCO's World Book Capital, and its long-standing appreciation of history and the arts is shown through its many museums, galleries and archaeological sites. The Emirate has also won itself a place as one of the region's top tourist hotspots, drawing millions every year to its rolling deserts, lofty mountains and beautiful green coasts.

الشارقة

تتميز الشارقة بتاريخها الفريد من حيث التاريخ العريق والآثار الأثيرة، فهي ليست العاصمة الثقافية للشرق الأوسط وتحتضن بل إنها أيضاً واحدة من أسرع المراكز التنموية نمواً على مستوى المنطقة، ويعتمد اقتصادها المزدهر على نحو متصارع من أكثر الفرص المتاحة لتوفاً في المنطقة، حيث تتخذ منها العديد من الشركات الوطنية الناشئة والشركات متعددة الجنسيات مكاناً لممارسة نشاطاتها الاقتصادية.

تتميز الشارقة بتاريخها الفريد من حيث التاريخ العريق والآثار الأثيرة، فهي ليست العاصمة الثقافية للشرق الأوسط وتحتضن بل إنها أيضاً واحدة من أسرع المراكز التنموية نمواً على مستوى المنطقة، ويعتمد اقتصادها المزدهر على نحو متصارع من أكثر الفرص المتاحة لتوفاً في المنطقة، حيث تتخذ منها العديد من الشركات الوطنية الناشئة والشركات متعددة الجنسيات مكاناً لممارسة نشاطاتها الاقتصادية.

وتتميز الشارقة بهذا التنوع من فرص العمل المتاحة من جانب منظمة الأمم المتحدة للتربية والعلم والثقافة اليونسكو، وذلك لتبنيها لسياساتها المتجذرة في تعزيز وضع الثقافة والفنون على المستوى المحلي والجهوي والإقليمي، إذ تطور ذلك ويصبح عبر مشاريعها التاريخية، ومبانيها الفنية، ومواقعها التراثية المتنوعة، كما باتت العديد من مدن الشارقة تتلهم من أسلوب الاسترخاء بمشاهدة المناظر الخلابة وتجربة العجائب، وشواطئها الساحلية.

Arada

Founded in 2016, Arada is the UAE's most progressive and exciting developer, dedicated to creating communities that inspire, engage and enrich their residents.

Arada focuses on community, technology and sustainability - all critical and fast-moving issues in the world today - and how these three themes can help improve the lives of residents, workers and visitors in our developments.

To date, Arada has launched two award-winning communities in Sharjah, **Musana Residences** rapidly became the Emirate's fastest-selling development when it sold out its first phase less than a month after release, and the first homes were delivered to owners in May 2019.

Ajda, Sharjah's largest owner-occupied community, is a transformational project for the Emirate, and a destination where living, working, studying, entertainment and culture all come together.



أراد

تأسست شركة أراد في عام 2016 بؤية واضحة تهدف إلى تطوير مجتمعات حضرية تمنح قاطنيها بيئة مثيرة وملهمة ولابنة بالحياة.

وتنصب أولوياتها في الشركة على ثلاثة محاور رئيسية: بناء استراتيجيات استثمارية عالمية متزايدة الأبعاد، وإدارة المجتمعات والتجارب الحياتية، وتطوير الاستدامة ومدى تكيفها ومساهمتها في تحسين حياة القاطنين والمواطنين والزوار في جميع مشاريعنا المتطورة التي نخدم من خلالها.

أطلقت أراد حتى الآن مشروعين استثماريين متكاملين: الأولين في الشارقة، كان أولهما مستأجر (سيف) والذي سيجاز ما أصبح أسرع مشروع عقاري مرموق في الإمارة بعد بيع جميع وحدات المرحلة الأولى منه خلال أقل من شهر واحد، وقد تم تسليم أول 100 من المنازل أمتلاكها في شهر مايو 2019م.

تم اختيار الشركة عملها بمشروع الحياة كجزء من مشروع متعدد الاستثمارات في شرق الشارقة والذي يمثل تحولاً جذرياً في استثمارهم في صياغة مستقبل مبدع في الإمارة، ولقد أضافت وجهة جديدة متكاملة تتحدث بين المجتمعات العيش والعمل والتعليم والتجديد والتفكير والتفاهة في أن يحيا.



Aljada

Aljada is redefining Sharjah. It is a city within a city, where everything is at your fingertips. It is a truly progressive and smart destination, where tradition meets the future. And it is place where excitement and creativity are always flourishing.

Spread over a 24 million square foot space in the last large plot of undeveloped land in the heart of one of the Gulf's most important cities, Aljada contains extensive residential, commercial, retail and hospitality elements. Designed by Zaha Hadid Architects, the city's Central Hub is a new leisure and entertainment district for the UAE.

Construction on Aljada is well under way and the first homes are scheduled to be handed over in the first quarter of 2020.

الجادة

وتتمد الجادة على مساحة تزيد عن 24 مليون متر مربع على آخر قطعة أرض متوفرة في قلب الشارقة وتضم بين جنباتها العديد من الأبنية السكنية الكبيرة التي تنطق بحولها الجسد، وهو أحد أبرز السمات التقنية الحديثة على مستوى دولة الإمارات العربية المتحدة. وقد تم تصميمه وفق مهندسي شركة (h) حدود العالمية الهندسية المعمارية.

وقد استت السانحة بالأعمال الإنشائية في هذا المشروع الضخم، حيث يتوقع تسليم أول دفعة من المنازل لملكها خلال الربع الأول من عام 2020.

تمثل الجادة العنوان العصري الأحدث في الشارقة، وهي مدينة متكاملة توفر جميع المرافق والخدمات النوعية، كما تحتفل بعناصر الابتكار والتجديد مثل أي مدينة ككيرة حديثة على مستوى العالم، بحيث يمكن للقاطنين فيها الإطلال على بنايات نحو مستقبل أكثر إشراقاً وتجاذاً.



Live

The best of everything, on your doorstep.
 Early morning jogs through tree-lined paths.
 Great dinners with your greater friends.
 Sunset views from your balcony over an
 incredible skyline.

تتمتع بأفضل من كل شيء، على أمتك.
 جري في الصباح الباكر عبر المسارات الممتدة بالحدائق.
 عشاء رائع مع أصدقائك.
 مشاهد غروب الشمس من شرفة بيتك على
 أفق المدينة الرائع.

رفاهية استثنائية

إننا نؤمن بأنك تستحق كل شيء من حياة مثالية.
 واستمتع بأشياء روحية مع العائلة والأصدقاء
 والتخاطب والتفوق في العمل في حديقة
 جميلة تزيها خلال الأشجار المزهرة. واستمتع
 بمشاهدة الغروب الأسرية وأجمل عشاءك
 بأجمل المناظر وأجمل الأصوات في واجهة
 جديدة ذات حوائط متحركة.

تعد الحياة المثالية التي نؤمن بها في دبي، من أجلك.
 نعلم جيداً أنك تستحق كل شيء من حياة مثالية.
 ونعلم جيداً أنك تستحق كل شيء من حياة مثالية.
 ونعلم جيداً أنك تستحق كل شيء من حياة مثالية.

Welcome to Aljada, the Gulf's newest address.

Located in the heart of Sharjah, and adjacent to University City, Aljada is the perfect destination for the next generation.

مرحباً بكم في الجادة؛ العنوان العصري الأبرز في منطقة الخليج!

وتتميز الجادة بقربها من المدينة الجامعية في الشارقة، وهي إحدى أكبر المؤسسات الأكاديمية في منطقة الشرق الأوسط، مما يجعل منها وجهة مثالية لجيل الشباب الراغب بشق طريقه نحو التفوق والنجاح.





Work

Aljada's Business Park will be the heart of commercial activity in one of the Arab world's fastest growing and most diverse economies. Over 500,000 square metres of space is available for multinationals, local companies, SMEs and start-ups.

تشاكا متواصل

يترجم مجتمع الأعمال في الجادة في قلب منطقة الفرص بالمشهد التجاري بسنن إحدى أسرع الاقتصادات نمواً وأكثرها تطوراً في العالم العربي، ويوفر أكثر من 500 ألف متر مربع من المساحات التجارية للشركات المحلية والمتعددة الجنسيات، والمؤسسات الصغيرة والمتوسطة، والمشاريع والشركات الناشئة.



Sharjah has a long heritage as a creative hub for entrepreneurs and Ajlada is proud to follow that tradition.

We're building an ecosystem that will not only support the growth of the UAE's economy, but will also provide jobs for thousands of young people from the Gulf and beyond.

ويذكر المشروع بالسير على خطى إمارة الشارقة التي تمتلك تاريخاً عريقاً باعتبارها مركزاً للابتكار وريادة الأعمال على مستوى المنطقة.

كما حرصت على تطوير بيئة خادمة لتدعيم من تطور نمو الاقتصاد الوطني وتوسيع الفرص الوطنية للألاف من الشباب من منطقة الخليج العربي ونحوها من الدول.





Relax

Your time off is precious. However you choose to wind down, Aljoda has something to suit you. From its beautifully landscaped parks and spacious green areas to extensive communal areas, including shops, cafes and restaurants, there are plenty of options to help you relax.

استجمام لامتناهي

نحن ندرك تماماً أهمية استمتاعك بوقت فراغك بأفضل طريقة ممكنة، فقد وفرنا لك في الجادة جميع وسائل الراحة من مرافق رياضية، ومراكز تسوق، ومطاعم ومقاهي راقية، وغيرها من الخيارات الترفيهية المتنوعة التي ستساعدك على الاسترخاء والاستمتاع بأجمل اللحظات.



In town for business or pleasure and need a place to stay? At Aljada we've got you covered. We've tied up with Emaar Hospitality Group to bring you three diverse hotels – The Address, Vida and Rove – to look after your every need.

You'll also find a wealth of retail and dining experiences at the Central Hub, located in the heart of Aljada.

وسواء كنت قادماً لأغراض العمل أو الاستجمام، فسيضمن لك مشروع الجادة تجربة غنية ضمن باقة متنوعة من الخيارات المتنوعة. فقد وقعت أراد اتفاقية شراكة مع مجموعة إعمار للضيافة تشييد ثلاثة فنادق عالمية راقية: العنوان، و فيدا، و روف، بحيث تلبي جميع احتياجات القاطنين والزوار.

كما سيؤمن بالنظر في العديد من موائد البيع والشراء التجارية المتكاملة في المركز التجاري لتلبية جميع احتياجاتكم.





Play

Whether you're in the mood for a new adventure, playing your favourite sport or simply feel like catching the latest show, Aljada's Central Hub is the perfect location for leisure and entertainment. Designed by Zaha Hadid Architects, this futuristic complex mixes lush green spaces with elliptical buildings in a space that is a work of art in itself.

ترفيهية لا محدود

يضام المركز الرئيسي في الجادة باقة كبيرة من أنشطة التسلية والترفيه التي صممت لإرضاء أذواقكم. وقد قامت شركة زها حديد العالمية للهندسة المعمارية بتصميم هذا المجمع الاستثنائي بحيث يمزج بين المساحات الخضراء الغنية والأبنية الرياضية الجميلة ضمن محيط مليء بشكل قطعها الفنية بكل ما تحمل الكلمة من معنى.

نقدّم لكم "ذا بوليفارد"

**Introducing
The Boulevard**



Experience inner city life

Dynamic, creative and progressive. Residents at The Boulevard will benefit from homes that match their lifestyles. Style meets substance at these New York-style apartments, where the buzzing city streets are just metres below your balcony, and where great design and exquisite finishes come as standard.

The Boulevard is situated right on Aljada's main-lined roads, a bustling thoroughfare featuring shops, cafes and restaurants.

Located on the edge of the ultra-contemporary East Village community, The Boulevard is part of a young and energetic neighbourhood that draws commuters. This unique set of buildings is also the perfect base from which to explore the electric vibe of Aljada, the most exciting new urban destination in the region.

استمتع بصحب الحياة وسط المدينة

سيحظى القاطنون في "ذا بوليفارد" بمنزل رائعة تحاكي أنماط حياتهم العصرية، إذ تتناغم جماليات الأسلوب مع العناصر المحيطة في هذه الشقق التي صممت على طراز الوحدات السكنية الحديثة في مدينة نيويورك، حيث شوارع المدينة الصاخبة على بعد أمتار قليلة من شرفة منزلك، فضلاً عن التصاميم الأخاذة والتشطيبات الرائعة التي تم اختيارها بعناية تامة في كل وحدة.

وتتميز الأتراج السكنية بأبوابها المصنوعة من الحديد المطاوع، على شارع رئيسي مزين بالأشجار في قلب المدينة والذي يضم العديد من المطاعم والمقاهي والمطاعم الرائعة.

وباعتباره جزءاً من مجتمع استراتيجي، فإنها توفر كل ما تحتاجه من الخدمات والمرافق الحديثة، والتي تشمل بيوتها الخاصة ليرا المستثمرين، أبنية المدينة على مستوى المنطقة بأسرها.





You can have it all at The Boulevard

With a dazzling range of one, two and three bedroom apartments, The Boulevard offers you a chance to choose the lifestyle that's perfect for you. Each unit complements hand-selected materials with state-of-the-art Aroca Smart Home technology, providing you with comfort, ease and efficiency.

Apartments are thoughtfully crafted to use space elegantly and intelligently, providing privacy and peace for your family. At the same time, floor-to-ceiling windows and panoramic views offer an instant connection to the energy of the city below.

كن ما تحلم به في *ذا بوليفارد*

يضم *ذا بوليفارد* كهراتب متنوعة من الشقق من غرفة وعرفلين وثلاث غرف نوم تمتاز بالعديد من التجهيزات المختارة بعناية والتشطيبات فائقة الجودة. كما سيتم تجهيز كل وحدة بتقنيات المنزل الذكي من أراء لضمان أقصى درجات الراحة والرفاهية لمالكي المنازل.

وقد أخذنا بعين الاعتبار الاستدامة من كل شيء من بيئة في الشقق من أجل توفير مساحة كافية من الخضوع والهدوء لجميع أفراد العائلة. وستتيح الفيلد أريجة التي تمتد من الأضواء حتى الشقق بالمشاعن البارونيه الأرائك تانجا بالمشاعن مع صمما حياة المصممة أسفل الأرائك السكنية.

Downtown living at The Boulevard

Iconic architecture gives way to a seamless living experience at The Boulevard. A wide range of amenities, including a fully stocked health club and shared swimming pool, allow you to connect with the surrounding community. Cafes and shops at ground-floor level mean that you are never far from everyday needs.

Your new home is just metres away from the Central Hub, a new entertainment and leisure destination for the Middle East, designed by Zaha Hadid Architects. Ajada's business park, a new commercial centre for the Northern Emirates, with prime office space and co-working areas, is also a short walk away.

أسلوب حياة عصرية جديد في "ذا بوليفارد"

يتميز المجمع السكني الضخم بتصميمه المعمارية الأيقونية ومرافقه المتعددة التي تضم نادياً صحياً متكاملًا وحوض سباحة مشترك لمنحك فرصة للتواصل مع أفراد المجتمع المحيط بك، إضافة إلى باقة من المقاهي والمناجر المتنوعة.

ويتمتع "ذا بوليفارد" بالقرب من المركز التجاري الرئيسي في المنطقة والذي يمتاز بدوره بوفرة الخدمات متكاملة على مستوى الشوارع الأصيلة من تصميم شركة زها حديد العالمية الهندسة المعمارية التي تلتزم بتصميم الأبنية الحديثة التي سيشكل سكانها رئيساً ومستفيداً للشركات من مختلف أرجاء الإمارات الشمالية بفضل تنسيقها الهندسي الحديث، وسماحتها المتكيفة مع المناخ.



BO ULE VA RD

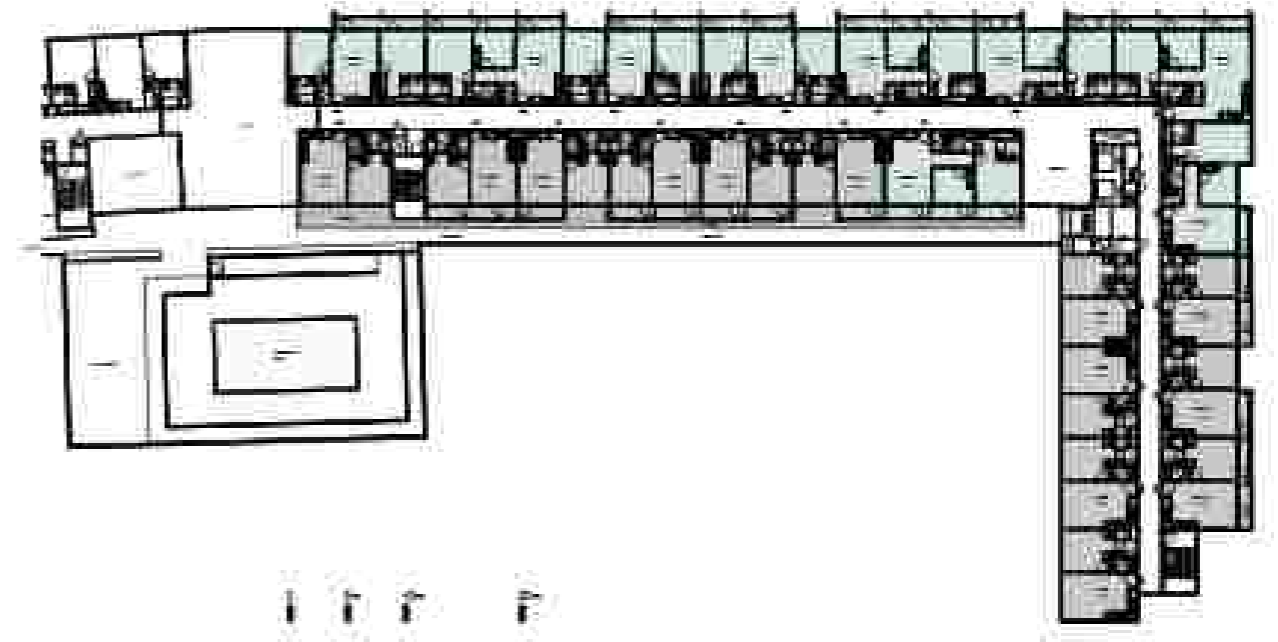
1

يولىقارد 1



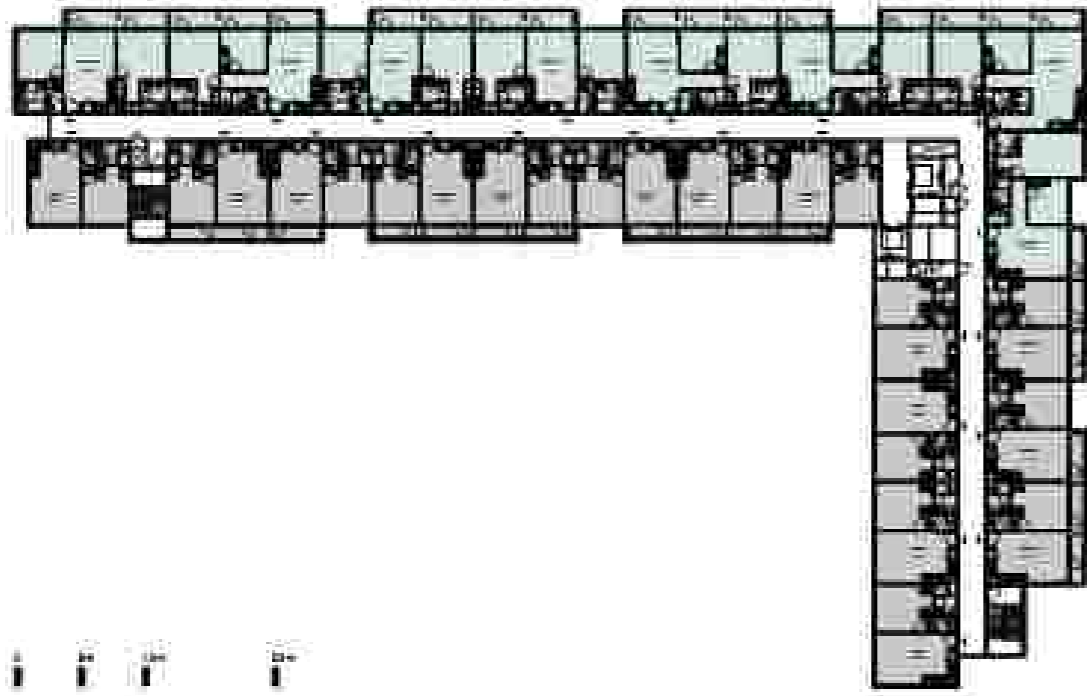
FLOOR PLANS

مخططات الطوابق

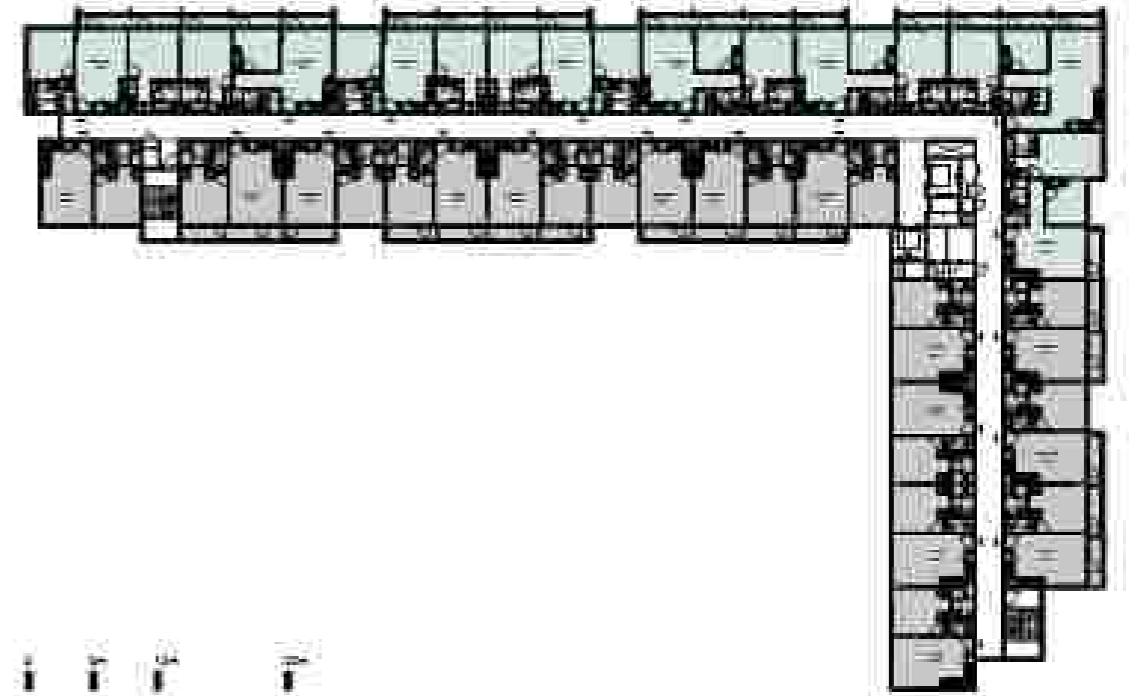


First floor plan



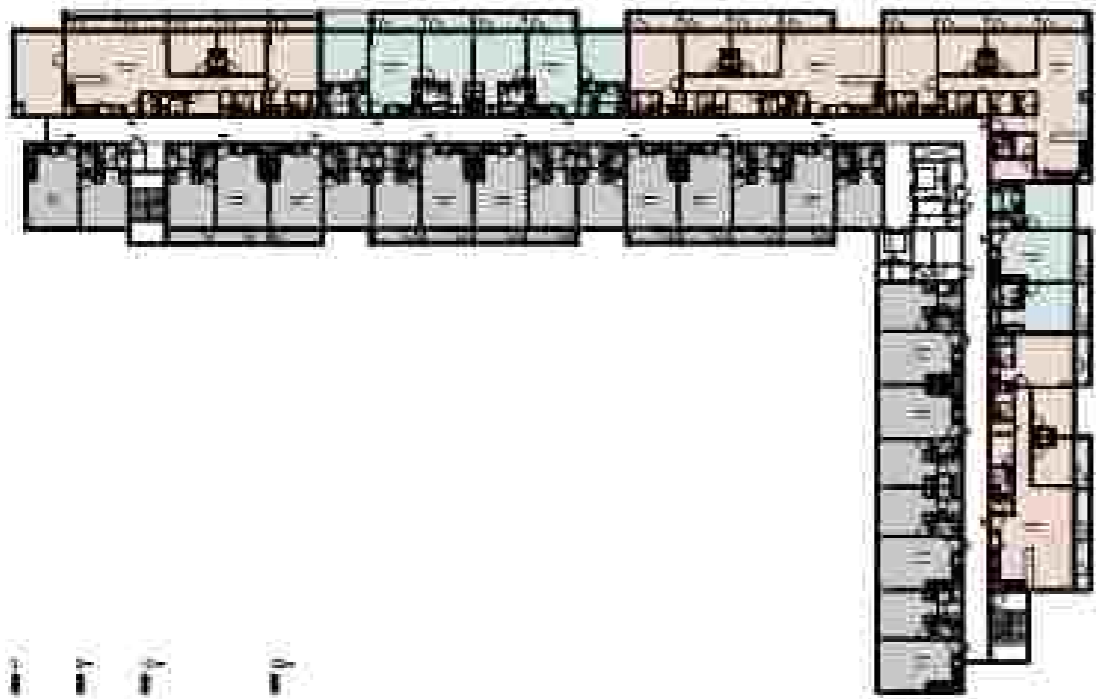


Second, fourth and sixth floor plan

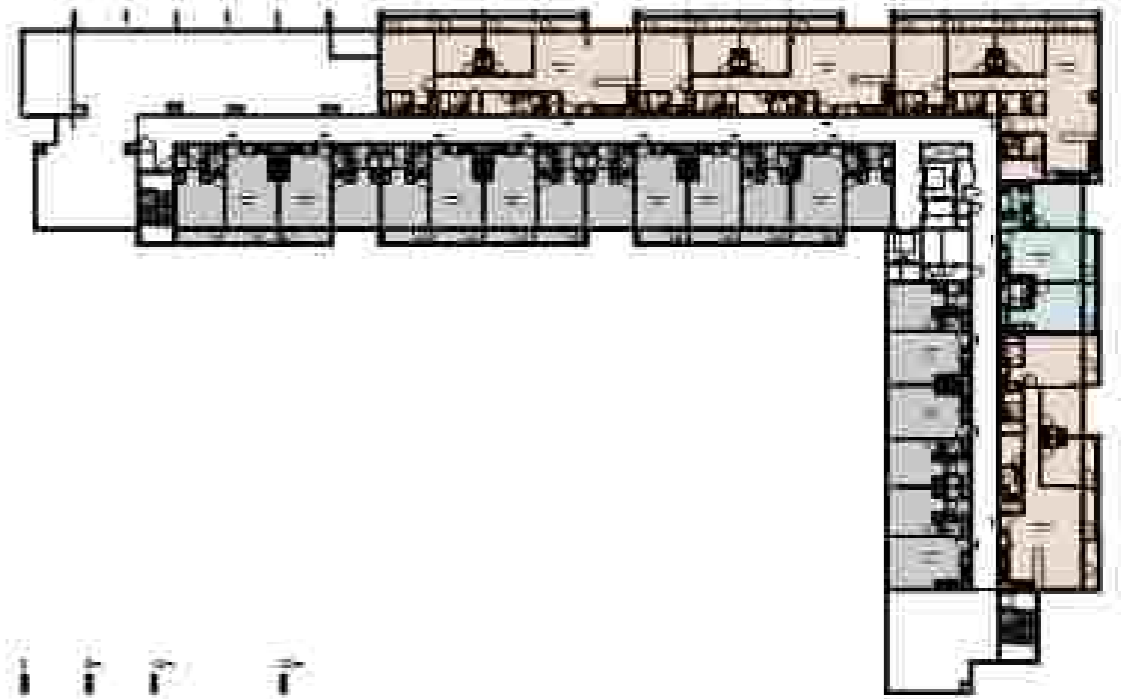


Third, fifth and seventh floor plan





Eighth floor plan

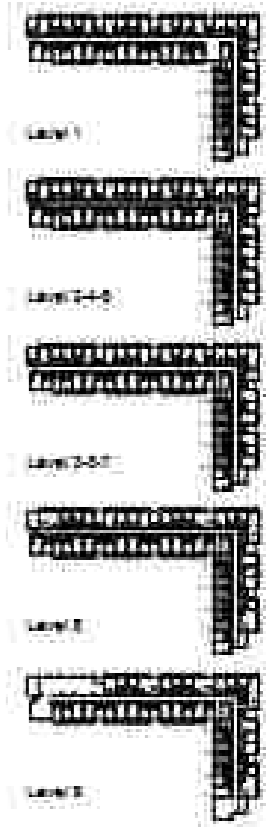


Ninth floor plan



UNIT PLANS

مخططات الوحدات



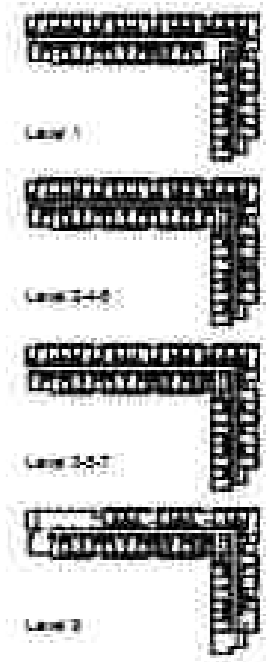
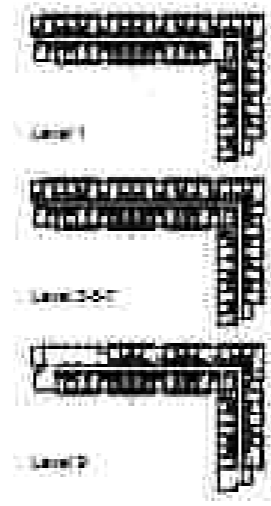
1 bedroom A

Residence Specifications

1 Bedroom Apartment
 Unit Area: 511 Sqm (551 Sqft)
 Total Area: 511 Sqm (551 Sqft)

1. The drawings are indicative, based on client's input. It is subject to change without notice. The drawings are for information only and do not constitute an offer. The drawings are for information only and do not constitute an offer. The drawings are for information only and do not constitute an offer. The drawings are for information only and do not constitute an offer.

2. The drawings are indicative, based on client's input. It is subject to change without notice. The drawings are for information only and do not constitute an offer. The drawings are for information only and do not constitute an offer. The drawings are for information only and do not constitute an offer. The drawings are for information only and do not constitute an offer.



1 bedroom A 1

Residence Specifications

1 Bedroom Apartment
 Unit Area: 70.1 Sqm (751 Sqft)
 Balcony Area: 9.4 Sqm (101 Sqft)
 Total Area: 80.5 Sqm (862 Sqft)

1. Measurements are indicated from 0.10m to 0.15m in height and width dimensions.
 2. Balcony: 1.10m high, 0.10m wide from the floor level. 3. All dimensions are in meters.
 4. Kitchen: 1.80m high, 0.10m wide from the floor level. 5. All dimensions are in meters.
 6. Bathrooms: 1.80m high, 0.10m wide from the floor level. 7. All dimensions are in meters.
 8. Toilets: 1.80m high, 0.10m wide from the floor level. 9. All dimensions are in meters.
 10. Dressing rooms: 1.80m high, 0.10m wide from the floor level. 11. All dimensions are in meters.

1. Measurements are indicated from 0.10m to 0.15m in height and width dimensions.
 2. Balcony: 1.10m high, 0.10m wide from the floor level. 3. All dimensions are in meters.
 4. Kitchen: 1.80m high, 0.10m wide from the floor level. 5. All dimensions are in meters.
 6. Bathrooms: 1.80m high, 0.10m wide from the floor level. 7. All dimensions are in meters.
 8. Toilets: 1.80m high, 0.10m wide from the floor level. 9. All dimensions are in meters.
 10. Dressing rooms: 1.80m high, 0.10m wide from the floor level. 11. All dimensions are in meters.

1 bedroom A 2

Residence Specifications

1 Bedroom Apartment
 Unit Area: 51.1 Sqm (547 Sqft)
 Balcony Area: 4.8 Sqm (51 Sqft)
 Total Area: 55.9 Sqm (602 Sqft)

1. Measurements are indicated from 0.10m to 0.15m in height and width dimensions.
 2. Balcony: 1.10m high, 0.10m wide from the floor level. 3. All dimensions are in meters.
 4. Kitchen: 1.80m high, 0.10m wide from the floor level. 5. All dimensions are in meters.
 6. Bathrooms: 1.80m high, 0.10m wide from the floor level. 7. All dimensions are in meters.
 8. Toilets: 1.80m high, 0.10m wide from the floor level. 9. All dimensions are in meters.
 10. Dressing rooms: 1.80m high, 0.10m wide from the floor level. 11. All dimensions are in meters.

1. Measurements are indicated from 0.10m to 0.15m in height and width dimensions.
 2. Balcony: 1.10m high, 0.10m wide from the floor level. 3. All dimensions are in meters.
 4. Kitchen: 1.80m high, 0.10m wide from the floor level. 5. All dimensions are in meters.
 6. Bathrooms: 1.80m high, 0.10m wide from the floor level. 7. All dimensions are in meters.
 8. Toilets: 1.80m high, 0.10m wide from the floor level. 9. All dimensions are in meters.
 10. Dressing rooms: 1.80m high, 0.10m wide from the floor level. 11. All dimensions are in meters.



1 bedroom A 3

Residence Specifications

1 Bedroom Apartment
 Unit Area: 70.1 Sqm (754 Sqft)
 Balcony Area: 7.0 Sqm (75 Sqft)
 Total Area: 58.0 Sqm (624 Sqft)

1. Measurements are indicated from 0.15m to 0.15m in height and width dimensions.
 2. Dimensions are indicated from 0.15m to 0.15m in height and width dimensions.
 3. All dimensions are in meters.
 4. All dimensions are in meters.
 5. All dimensions are in meters.
 6. All dimensions are in meters.
 7. All dimensions are in meters.
 8. All dimensions are in meters.
 9. All dimensions are in meters.
 10. All dimensions are in meters.

1. Measurements are indicated from 0.15m to 0.15m in height and width dimensions.
 2. Dimensions are indicated from 0.15m to 0.15m in height and width dimensions.
 3. All dimensions are in meters.
 4. All dimensions are in meters.
 5. All dimensions are in meters.
 6. All dimensions are in meters.
 7. All dimensions are in meters.
 8. All dimensions are in meters.
 9. All dimensions are in meters.
 10. All dimensions are in meters.

1 bedroom A 4

Residence Specifications

1 Bedroom Apartment
 Unit Area: 51.1 Sqm (547 Sqft)
 Balcony Area: 4 Sqm (43 Sqft)
 Total Area: 55.3 Sqm (594 Sqft)

1. Measurements are indicated from 0.15m to 0.15m in height and width dimensions.
 2. Dimensions are indicated from 0.15m to 0.15m in height and width dimensions.
 3. All dimensions are in meters.
 4. All dimensions are in meters.
 5. All dimensions are in meters.
 6. All dimensions are in meters.
 7. All dimensions are in meters.
 8. All dimensions are in meters.
 9. All dimensions are in meters.
 10. All dimensions are in meters.

1. Measurements are indicated from 0.15m to 0.15m in height and width dimensions.
 2. Dimensions are indicated from 0.15m to 0.15m in height and width dimensions.
 3. All dimensions are in meters.
 4. All dimensions are in meters.
 5. All dimensions are in meters.
 6. All dimensions are in meters.
 7. All dimensions are in meters.
 8. All dimensions are in meters.
 9. All dimensions are in meters.
 10. All dimensions are in meters.



1 bedroom C

Residence Specifications
 1 Bedroom Apartment
 Unit Area: 52 Sqm (560 Sqft)
 Total Area: 52 Sqm (560 Sqft)

1. Measurements are indicated from 0.10m to 0.15m in height and width dimensions.
 2. Rooms are shown with their respective furniture. All furniture shown is for illustrative purposes only. It is not intended to represent actual furniture. Dimensions shown are for illustration purposes only. The developer reserves the right to modify dimensions in its standard drawings, without any further notification to be given to any party.

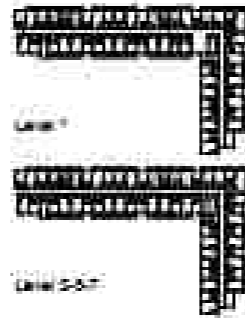


1 bedroom D 1

Residence Specifications
 1 Bedroom Apartment
 Unit Area: 51.1 Sqm (548 Sqft)
 Balcony Area: 5.7 Sqm (613 Sqft)
 Total Area: 56.8 Sqm (611 Sqft)

1. Measurements are indicated from 0.10m to 0.15m in height and width dimensions.
 2. Rooms are shown with their respective furniture. All furniture shown is for illustrative purposes only. It is not intended to represent actual furniture. Dimensions shown are for illustration purposes only. The developer reserves the right to modify dimensions in its standard drawings, without any further notification to be given to any party.

3. Measurements are indicated from 0.10m to 0.15m in height and width dimensions.
 4. Rooms are shown with their respective furniture. All furniture shown is for illustrative purposes only. It is not intended to represent actual furniture. Dimensions shown are for illustration purposes only. The developer reserves the right to modify dimensions in its standard drawings, without any further notification to be given to any party.



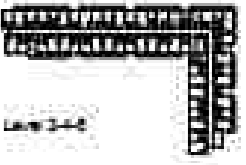
2 bedroom A 2

Residence Specifications

2 Bedroom Apartment
 Unit Area: 77 Sqm (829 Sqft)
 Balcony Area: 11.8 Sqm (127 Sqft)
 Total Area: 88.8 Sqm (956 Sqft)

1. Measurements are indicated from 0.10m to 0.15m in height and width dimensions.
 2. Dimensions are indicated from 0.10m to 0.15m in height and width dimensions.
 3. All dimensions are in meters.
 4. All dimensions are in meters.
 5. All dimensions are in meters.
 6. All dimensions are in meters.
 7. All dimensions are in meters.
 8. All dimensions are in meters.
 9. All dimensions are in meters.
 10. All dimensions are in meters.

1. Measurements are indicated from 0.10m to 0.15m in height and width dimensions.
 2. Dimensions are indicated from 0.10m to 0.15m in height and width dimensions.
 3. All dimensions are in meters.
 4. All dimensions are in meters.
 5. All dimensions are in meters.
 6. All dimensions are in meters.
 7. All dimensions are in meters.
 8. All dimensions are in meters.
 9. All dimensions are in meters.
 10. All dimensions are in meters.



2 bedroom A 3

Residence Specifications

2 Bedroom Apartment
 Unit Area: 77 Sqm (829 Sqft)
 Balcony Area: 11.2 Sqm (121 Sqft)
 Total Area: 88.2 Sqm (950 Sqft)

1. Measurements are indicated from 0.10m to 0.15m in height and width dimensions.
 2. Dimensions are indicated from 0.10m to 0.15m in height and width dimensions.
 3. All dimensions are in meters.
 4. All dimensions are in meters.
 5. All dimensions are in meters.
 6. All dimensions are in meters.
 7. All dimensions are in meters.
 8. All dimensions are in meters.
 9. All dimensions are in meters.
 10. All dimensions are in meters.

1. Measurements are indicated from 0.10m to 0.15m in height and width dimensions.
 2. Dimensions are indicated from 0.10m to 0.15m in height and width dimensions.
 3. All dimensions are in meters.
 4. All dimensions are in meters.
 5. All dimensions are in meters.
 6. All dimensions are in meters.
 7. All dimensions are in meters.
 8. All dimensions are in meters.
 9. All dimensions are in meters.
 10. All dimensions are in meters.



2 bedroom A 4

Residence Specifications

2 Bedroom Apartment
 Unit Area: 77 Sqm (829 Sqft)
 Balcony Area: 14.6 Sqm (158 Sqft)
 Total Area: 91.5 Sqm (987 Sqft)

1. Measurements are indicated from 0.00m to 0.00m in 0.01m increments (centimeters).
 2. Dimensions are indicated from 0.00m to 0.00m in 0.01m increments (centimeters).
 3. All dimensions are for finished areas.
 4. All dimensions are for finished areas.
 5. All dimensions are for finished areas.
 6. All dimensions are for finished areas.
 7. All dimensions are for finished areas.
 8. All dimensions are for finished areas.
 9. All dimensions are for finished areas.
 10. All dimensions are for finished areas.

1. Measurements are indicated from 0.00m to 0.00m in 0.01m increments (centimeters).
 2. Dimensions are indicated from 0.00m to 0.00m in 0.01m increments (centimeters).
 3. All dimensions are for finished areas.
 4. All dimensions are for finished areas.
 5. All dimensions are for finished areas.
 6. All dimensions are for finished areas.
 7. All dimensions are for finished areas.
 8. All dimensions are for finished areas.
 9. All dimensions are for finished areas.
 10. All dimensions are for finished areas.



2 bedroom A 5

Residence Specifications

2 Bedroom Apartment
 Unit Area: 77 Sqm (829 Sqft)
 Balcony Area: 14.6 Sqm (158 Sqft)
 Total Area: 91.5 Sqm (987 Sqft)

1. Measurements are indicated from 0.00m to 0.00m in 0.01m increments (centimeters).
 2. Dimensions are indicated from 0.00m to 0.00m in 0.01m increments (centimeters).
 3. All dimensions are for finished areas.
 4. All dimensions are for finished areas.
 5. All dimensions are for finished areas.
 6. All dimensions are for finished areas.
 7. All dimensions are for finished areas.
 8. All dimensions are for finished areas.
 9. All dimensions are for finished areas.
 10. All dimensions are for finished areas.

1. Measurements are indicated from 0.00m to 0.00m in 0.01m increments (centimeters).
 2. Dimensions are indicated from 0.00m to 0.00m in 0.01m increments (centimeters).
 3. All dimensions are for finished areas.
 4. All dimensions are for finished areas.
 5. All dimensions are for finished areas.
 6. All dimensions are for finished areas.
 7. All dimensions are for finished areas.
 8. All dimensions are for finished areas.
 9. All dimensions are for finished areas.
 10. All dimensions are for finished areas.



2 bedroom C 1

Reference Specifications:
 2 Bedroom Apartment
 Unit Area: 77.8 Sqm (838 Sqft)
 Balcony Area: 7.9 Sqm (85 Sqft)
 Total Area: 85.7 Sqm (923 Sqft)

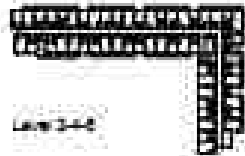
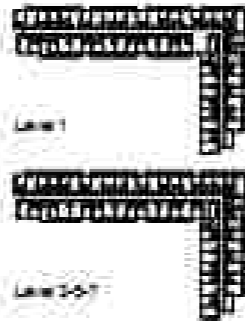
1. Measurements are indicated from a fixed to fixed or finished to finished dimensions.
 2. Dimensions are indicated from wall to wall (between 1.1 m finished walls) for
 bedrooms, living areas, and kitchen & dining areas. All dimensions are in meters.
 3. Dimensions are indicated from the center of the door to the center of the door.
 4. Dimensions are indicated from the center of the door to the center of the door.
 5. Dimensions are indicated from the center of the door to the center of the door.
 6. Dimensions are indicated from the center of the door to the center of the door.



2 bedroom C 2

Reference Specifications:
 2 Bedroom Apartment
 Unit Area: 77.8 Sqm (838 Sqft)
 Balcony Area: 7.9 Sqm (85 Sqft)
 Total Area: 85.7 Sqm (923 Sqft)

1. Measurements are indicated from a fixed to fixed or finished to finished dimensions.
 2. Dimensions are indicated from wall to wall (between 1.1 m finished walls) for
 bedrooms, living areas, and kitchen & dining areas. All dimensions are in meters.
 3. Dimensions are indicated from the center of the door to the center of the door.
 4. Dimensions are indicated from the center of the door to the center of the door.
 5. Dimensions are indicated from the center of the door to the center of the door.
 6. Dimensions are indicated from the center of the door to the center of the door.



2 bedroom D 1

Residence Specifications

2 Bedroom Apartment
 Unit Area: 78.8 Sqm (849 Sqft)
 Balcony Area: 4 Sqm (43 Sqft)
 Total Area: 82.8 Sqm (892 Sqft)

1. Measurements are indicated from 0.000 to 0.000 in meters and rounded to the nearest millimeter. Dimensions are given in meters and rounded to the nearest millimeter. All dimensions are given in meters and rounded to the nearest millimeter. All dimensions are given in meters and rounded to the nearest millimeter. All dimensions are given in meters and rounded to the nearest millimeter.

2. Measurements are indicated from 0.000 to 0.000 in meters and rounded to the nearest millimeter. Dimensions are given in meters and rounded to the nearest millimeter. All dimensions are given in meters and rounded to the nearest millimeter. All dimensions are given in meters and rounded to the nearest millimeter. All dimensions are given in meters and rounded to the nearest millimeter.

2 bedroom D 2

Residence Specifications

2 Bedroom Apartment
 Unit Area: 78.8 Sqm (849 Sqft)
 Balcony Area: 4.8 Sqm (51 Sqft)
 Total Area: 83.6 Sqm (900 Sqft)

1. Measurements are indicated from 0.000 to 0.000 in meters and rounded to the nearest millimeter. Dimensions are given in meters and rounded to the nearest millimeter. All dimensions are given in meters and rounded to the nearest millimeter. All dimensions are given in meters and rounded to the nearest millimeter. All dimensions are given in meters and rounded to the nearest millimeter.

2. Measurements are indicated from 0.000 to 0.000 in meters and rounded to the nearest millimeter. Dimensions are given in meters and rounded to the nearest millimeter. All dimensions are given in meters and rounded to the nearest millimeter. All dimensions are given in meters and rounded to the nearest millimeter. All dimensions are given in meters and rounded to the nearest millimeter.



2 bedroom E 1

Residence Specifications

2 Bedroom Apartment
 Unit Area: 89.6 Sqm (965 Sqft)
 Balcony Area: 14.8 Sqm (159 Sqft)
 Total Area: 104.4 Sqm (1124 Sqft)

1. Measurements are indicated from the floor to floor to floor to floor (interior) dimensions.
 2. Balcony: 14.8 sqm (159 sqft) (14.8 sqm (159 sqft) x 1.0 sqm (10.8 sqft) = 15.8 sqm (171 sqft)).
 3. All dimensions are in meters (m) and feet (ft).
 4. All dimensions are in meters (m) and feet (ft).
 5. All dimensions are in meters (m) and feet (ft).
 6. All dimensions are in meters (m) and feet (ft).
 7. All dimensions are in meters (m) and feet (ft).
 8. All dimensions are in meters (m) and feet (ft).
 9. All dimensions are in meters (m) and feet (ft).
 10. All dimensions are in meters (m) and feet (ft).

1. Measurements are indicated from the floor to floor to floor to floor (interior) dimensions.
 2. Balcony: 14.8 sqm (159 sqft) (14.8 sqm (159 sqft) x 1.0 sqm (10.8 sqft) = 15.8 sqm (171 sqft)).
 3. All dimensions are in meters (m) and feet (ft).
 4. All dimensions are in meters (m) and feet (ft).
 5. All dimensions are in meters (m) and feet (ft).
 6. All dimensions are in meters (m) and feet (ft).
 7. All dimensions are in meters (m) and feet (ft).
 8. All dimensions are in meters (m) and feet (ft).
 9. All dimensions are in meters (m) and feet (ft).
 10. All dimensions are in meters (m) and feet (ft).

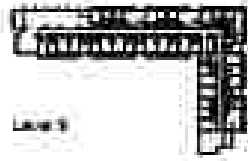
2 bedroom E 2

Residence Specifications

2 Bedroom Apartment
 Unit Area: 89.6 Sqm (965 Sqft)
 Balcony Area: 15.5 Sqm (167 Sqft)
 Total Area: 105.1 Sqm (1130 Sqft)

1. Measurements are indicated from the floor to floor to floor to floor (interior) dimensions.
 2. Balcony: 15.5 sqm (167 sqft) (15.5 sqm (167 sqft) x 1.0 sqm (10.8 sqft) = 16.5 sqm (177 sqft)).
 3. All dimensions are in meters (m) and feet (ft).
 4. All dimensions are in meters (m) and feet (ft).
 5. All dimensions are in meters (m) and feet (ft).
 6. All dimensions are in meters (m) and feet (ft).
 7. All dimensions are in meters (m) and feet (ft).
 8. All dimensions are in meters (m) and feet (ft).
 9. All dimensions are in meters (m) and feet (ft).
 10. All dimensions are in meters (m) and feet (ft).

1. Measurements are indicated from the floor to floor to floor to floor (interior) dimensions.
 2. Balcony: 15.5 sqm (167 sqft) (15.5 sqm (167 sqft) x 1.0 sqm (10.8 sqft) = 16.5 sqm (177 sqft)).
 3. All dimensions are in meters (m) and feet (ft).
 4. All dimensions are in meters (m) and feet (ft).
 5. All dimensions are in meters (m) and feet (ft).
 6. All dimensions are in meters (m) and feet (ft).
 7. All dimensions are in meters (m) and feet (ft).
 8. All dimensions are in meters (m) and feet (ft).
 9. All dimensions are in meters (m) and feet (ft).
 10. All dimensions are in meters (m) and feet (ft).



3 bedroom D 1

Residence Specifications

3 Bedroom Apartment
 Unit Area: 145.9 Sqm (1549 Sqft)
 Balcony Area: 22.1 Sqm (238 Sqft)
 Total Area: 168 Sqm (1787 Sqft)

1. Measurements are indicated from the floor to floor to floor to floor (interior) dimensions.
 2. Balcony, Terrace, Staircase and other areas are not included in the floor area.
 3. All dimensions are in meters.
 4. All areas are approximate and subject to change without notice.
 5. The floor area is for the apartment only. The terrace area is for the terrace only.
 6. The floor area is for the apartment only. The terrace area is for the terrace only.

1. Measurements are indicated from the floor to floor to floor to floor (interior) dimensions.
 2. Balcony, Terrace, Staircase and other areas are not included in the floor area.
 3. All dimensions are in meters.
 4. All areas are approximate and subject to change without notice.
 5. The floor area is for the apartment only. The terrace area is for the terrace only.
 6. The floor area is for the apartment only. The terrace area is for the terrace only.

3 bedroom D 2

Residence Specifications

3 Bedroom Apartment
 Unit Area: 145.9 Sqm (1549 Sqft)
 Balcony Area: 15.8 Sqm (171 Sqft)
 Total Area: 161.7 Sqm (1720 Sqft)

1. Measurements are indicated from the floor to floor to floor to floor (interior) dimensions.
 2. Balcony, Terrace, Staircase and other areas are not included in the floor area.
 3. All dimensions are in meters.
 4. All areas are approximate and subject to change without notice.
 5. The floor area is for the apartment only. The terrace area is for the terrace only.
 6. The floor area is for the apartment only. The terrace area is for the terrace only.

1. Measurements are indicated from the floor to floor to floor to floor (interior) dimensions.
 2. Balcony, Terrace, Staircase and other areas are not included in the floor area.
 3. All dimensions are in meters.
 4. All areas are approximate and subject to change without notice.
 5. The floor area is for the apartment only. The terrace area is for the terrace only.
 6. The floor area is for the apartment only. The terrace area is for the terrace only.



Key facts

- Mowat is Sheikh's largest ever project, and was launched by HH Sheikh Dr Sultan bin Muhammad Al Qasbi, Supreme Council Member and Ruler of Sharjah.
- The 25 million square foot master plan was designed by world-renowned architect Sir Norman Foster.
- Mowat provides an active healthy lifestyle, with parks within easy reach for every resident and a variety of sporting and social clubs.
- Direct access to Al Wadi Road and Universal City Road, and easy access to Sheikh Mohammed bin Zayed Road.
- Expected population of 20,000 including residents, workers and visitors.
- The Crown Plaza, designed by John Heald Architects, will be the largest international class hotel complex in the Northern Emirates.
- Mowat's Business Park will be a new commercial hub for Sharjah, featuring 400,000 square metres of prime flexible office space.
- First phase, three of which will be managed by French Electricity Group under the Address, Watt and Newbeacon.
- Education facilities include four schools, including one sponsored by SABO.

حقائق وأرقام

- يتوقع أن يصل عدد سكان المشروع إلى 20 ألف نسمة من مقيمين وموظفين وضيوف.
- سيكون أكبر مشروع عمراني في دبي، ويحتوي على 25 مليون متر مربع من المساحة.
- يتكون الحدائق الخضراء من مساحات كبيرة ذات جودة عالية، مع مساحات مخصصة للرياضة والترفيه.
- تم إنشاء حديقة حيوانات تضم 100 نوع من الحيوانات، بالإضافة إلى مساحات للحدائق المائية.
- تم تخصيص الحدائق لتوفير الترفيه لجميع فئات المجتمع، بما في ذلك الحدائق المائية والمساحات المخصصة للرياضة.
- سيتم توفير خدمات النقل العام، بما في ذلك الحافلات وسيارات الأجرة، لتسهيل الوصول إلى المشروع.
- تم توفير خدمات الرعاية الصحية، بما في ذلك العيادات والمستشفيات، لضمان صحة وسلامة السكان.
- تم توفير خدمات التعليم، بما في ذلك المدارس والجامعات، لضمان جودة التعليم.





الجادة
aljada

development by

 ARADA



CONTACT US

Toll-Free: 800 37373

Hotline : +971 52 754 3244

Email: sales@drehomes.com

Visit Us For More Info:-

<https://drehomes.com/property/the-boulevard-by-arada/>