

# LANA

on the park



TOWN **SQUARE** DUBAI



# CONTENTS

03 - TOWN SQUARE DUBAI  
05 - COMMUNITY FACILITIES  
08 - LIFESTYLE

---

09 - ABOUT LANA  
11 - INTERIOR & EXTERIOR  
18 - FACILITIES  
19 - FLOOR PLANS



## TOWN **SQUARE DUBAI**

With its central park and abundant green spaces, this neighborhood offers an optimal setting for a serene and harmonious lifestyle.

Surrounded by jogging paths, bike lanes, delightful cafes, and accessible retail choices, Town Square Dubai meets all your requirements, fostering a lively ambiance brimming with vitality and hospitality at every turn.



KEY FACTS



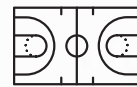
SQM  
50,000  
TOWN SQUARE PARK



SQM  
260,000  
OF GREENERY



OVER  
250  
RETAIL OUTLETS



8,000 SQM  
SPORTS AREA



13 KM  
CYCLING TRAIL



10 KM  
JOGGING TRAIL

# COMMUNITY FACILITIES



Town Square Park



Swimming Pool



GYM



Basketball Courts



Carousel



Kids Train



Retail Outlets



Cycling Track



Jogging Track



Kids Play Area



Restaurants & Cafes



Splash Pad



Football Pitch



Squash & Tennis Court



Padel Court



Skate Park



Fitness Club



Nurseries



Laundry Shop



Barbeque Area



Veterinary Clinic



Pet Shop



Clinics



Pharmacies



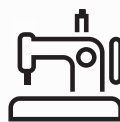
Grooming & Beauty Services



Supermarkets



Food Trucks



Tailor Shop



Dog Park



Mosque



WAVE RIDER



BASKETBALL COURT



TENNIS COURT



RETAIL OUTLETS



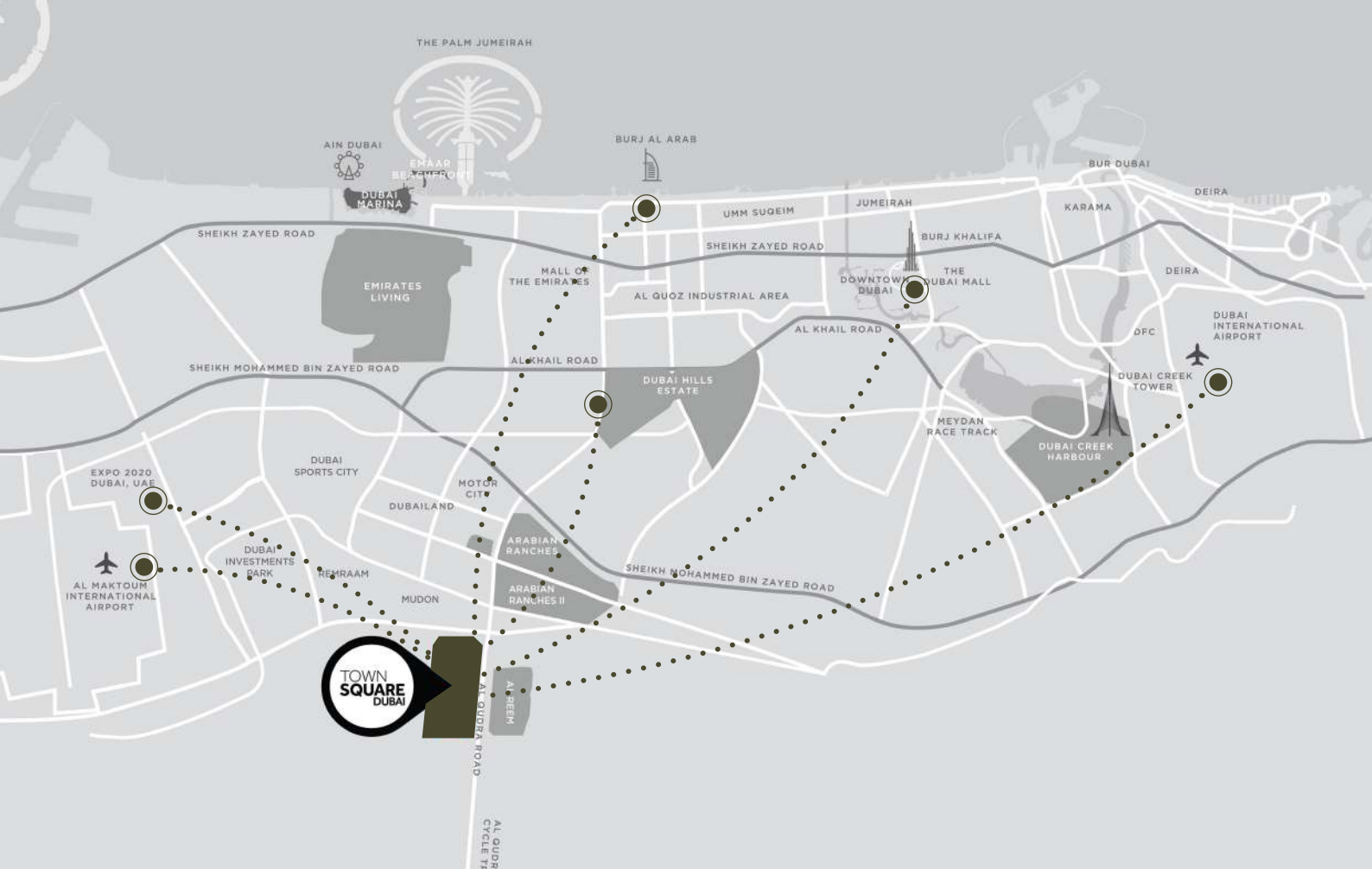
SUPERMARKETS



SWIMMING POOL



GYM



# LOCATION PROXIMITIES

DUBAI MALL



29 MIN

DUBAI INTL. AIRPORT



28 MIN

DWC AIRPORT



25 MIN

BURJ AL ARAB



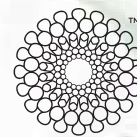
24 MIN

DUBAI HILLS MALL



20 MIN

DISTRICT 2020



20 MIN



# YOUR COMMUNITY, YOUR EXPERIENCE

Discover a wealth of amenities tailored to your interests, from diverse fitness options to serene and contemplative areas.

Whether you love adventure, quiet reflection, or just having fun—there's something here for you to enjoy!





# LANA

## on the park

Introducing “Lana on the Park,” an exclusive residential gem nestled within the heart of Town Square, featuring a range of 1, 2, and 3-bedroom apartments along with spacious 3-bedroom duplexes.

This contemporary development stands out for its unparalleled proximity to the main park, offering residents direct access to lush green spaces and recreational amenities right at their doorstep.

With a seamless blend of urban convenience and natural beauty, Lana on the Park promises a lifestyle where daily activities integrate with the tranquility of the park setting.



# THOSE WHO LIVE LIFE BY THE PARK



## ENJOY THE BEST VIEW



# NATURE'S HAVEN AT YOUR DOORSTEP

LANA on the Park presents a collection of contemporary residential apartments, perfectly located in a prestigious and vibrant neighborhood.

Immerse yourself in modern living with unparalleled leisure opportunities just steps away from the central park.



# EMBRACE PARKSIDE LIVING: WHERE NATURE WELCOMES YOU HOME

Earthy tones & hand-picked materials blend to form a calming sanctuary that inspires inner peace.



BECOME ONE  
WITH NATURE





# EVERY DETAIL INVITES INSPIRATION

The living and dining areas are bathed in natural light. The apartments feature high quality porcelain floors, built-in wardrobes and kitchens that are specifically designed for each apartment type.

The seamless blend of contemporary style and functionality ensures your kitchens and bathrooms are both efficient and elegant, featuring ample counter space, organized storage, and intuitive design.



EMBRACE YOUR  
SPACE, EMBRACE LIFE







# PARKSIDE PERSPECTIVES: WHERE NATURE MEETS HOME

LANA on the Park epitomizes contemporary elegance and architectural excellence, perfectly complemented by its prime parkside location.

Defined by sleek lines, lofty windows, and dynamic features, its impressive facade establishes a fresh benchmark for urban refinement.



# RECREATIONAL AMENITIES

Indulge in a diverse selection of wellness, entertainment, and leisure amenities tailored to residents of all ages and lifestyles, conveniently within reach.



SWIMMING POOL



GYM



KIDS PLAY AREAS



BBQ AREA



# FLOOR PLANS

# LANA

on the park

## 1 BEDROOM

UNIT TYPE A

AREA	
SUITE	56.31 Sq.m / 606.12 Sq.ft
BALCONY	17.75 Sq.m / 191.06 Sq.ft
TOTAL BUILT-UP	74.06 Sq.m / 797.18 Sq.ft



\*Balcony sizes vary

# LANA

on the park

## I BEDROOM

UNIT TYPE B

AREA	MIN	MAX
SUITE	56.42 Sq.m / 607.30 Sq.ft	56.42 Sq.m / 607.30 Sq.ft
BALCONY	5.36 Sq.m / 57.69 Sq.ft	5.43 Sq.m / 58.45 Sq.ft
TOTAL BUILT-UP	61.78 Sq.m / 664.99 Sq.ft	61.85 Sq.m / 665.75 Sq.ft



\*Balcony sizes vary

# LANA

on the park

## 2 BEDROOM

### UNIT TYPE A

AREA	MIN	MAX
SUITE	84.31 Sq.m / 907.51 Sq.ft	84.65 Sq.m / 911.17 Sq.ft
BALCONY	5.12 Sq.m / 55.11 Sq.ft	6.23 Sq.m / 67.06 Sq.ft
TOTAL BUILT-UP	89.70 Sq.m / 965.52 Sq.ft	90.86 Sq.m / 978.01 Sq.ft



\*Balcony sizes vary

# LANA

on the park

## 2 BEDROOM

### UNIT TYPE B

AREA	MIN	MAX
SUITE	85.27 Sq.m / 917.84 Sq.ft	85.27 Sq.m / 917.84 Sq.ft
BALCONY	10.69 Sq.m / 115.07 Sq.ft	10.69 Sq.m / 115.07 Sq.ft
TOTAL BUILT-UP	95.94 Sq.m / 1032.69 Sq.ft	95.96 Sq.m / 1032.90 Sq.ft



\*Balcony sizes vary

# LANA

on the park

## 2 BEDROOM UNIT TYPE C

AREA	MIN	MAX
SUITE	84.20 Sq.m / 906.32 Sq.ft	84.22 Sq.m / 906.54 Sq.ft
BALCONY	11.33 Sq.m / 121.96 Sq.ft	11.35 Sq.m / 122.17 Sq.ft
TOTAL BUILT-UP	95.55 Sq.m / 1028.49 Sq.ft	95.55 Sq.m / 1028.49 Sq.ft



\*Balcony sizes vary



# LANA

on the park

## 2 BEDROOM

UNIT TYPE D

AREA	
SUITE	90.26 Sq.m / 971.55 Sq.ft
BALCONY	11.95 Sq.m / 128.63 Sq.ft
TOTAL BUILT-UP	102.21 Sq.m / 1100.18 Sq.ft



\*Balcony sizes vary

# LANA

on the park

## 3 BEDROOM

### UNIT TYPE A

AREA	
SUITE	133.23 Sq.m / 1434.08 Sq.ft
BALCONY	22.54 Sq.m / 242.62 Sq.ft
TOTAL BUILT-UP	155.77 Sq.m / 1676.69 Sq.ft



\*Balcony sizes vary

# LANA

on the park

## 3 BEDROOM

### UNIT TYPE B

AREA	
SUITE	118.84 Sq.m / 1279.18 Sq.ft
BALCONY	11.95 Sq.m / 128.63 Sq.ft
TOTAL BUILT-UP	130.79 Sq.m / 1407.81 Sq.ft



\*Balcony sizes vary



# LANA

on the park



TownSquareDXB

800-NSHAMA  
NSHAMA Sales Centre Town Square Dubai, Al Qudra Road  
NSHAMA.AE

NSHAMA 