



ONE ^W
PALM
RESIDENCES

 Dorchester *Collection*

DUBAI

THE ULTIMATE ADDRESS

Completed in 2006, One Palm is a prestigious address in Dubai's most spectacular location and a world-class address of modern engineering. The latest luxury prime location surrounded by the crystal clear waters of the Arabian Gulf is a prime destination for those who can appreciate an ultra-exclusive lifestyle. One Palm is a collection of stunning residences at its most prime location. One Palm is proud to present One at Palm.

A RESIDENCE ON DUBAI'S
MOST ICONIC LANDMARK

ONE at
PALM
DUBAI

Dorchester Collection
DUBAI



AT THE CENTRE
OF THE VERY BEST
OF DUBAI

- | | | | |
|-----------------------|---|---|-------------------------|
| BURJ AL ARAB | 1 | 5 | ATLANTIS, THE PALM |
| ONE & ONLY THE PALM | 2 | 6 | SOFITEL HOTEL, THE PALM |
| JUMEIRAH ZABEEL SARAY | 3 | 7 | WALDORF ASTORIA DUBAI |
| KEMPINSKI HOTEL | 4 | 8 | RIXOS, THE PALM DUBAI |



ONE

ONE OF A KIND

One at Palm Jumeirah is a completely re-imagined approach to elegance and exclusivity. Iconic architecture, sprawling layouts, unbeatable amenities, lush green spaces, and the most sought-after interior features makes One at Palm Jumeirah more than a residence – it's a veritable masterpiece of artistic design and the pinnacle of luxurious living in all its aspects.





A LIMITED COLLECTION
OF 94 ULTRA-EXCLUSIVE
HOMES, DESIGNED FOR
LIFE LIVED IN INFINITE
ABUNDANCE

A STRIKING EDIFICE BEFITTING A WORLD- FAMOUS LANDMARK

With a stunning city skyline and the world-famous Palm Jumeirah set upon the gleaming Arabian Gulf as a backdrop, Max is your form of the world's most thrilling location. Each spectacular, light-filled residence invites inspiration around every corner. One of Palm Jumeirah offers a new level of exceptional elegance, for connoisseurs of perfection.



The ultimate elegance of your home at One at Palm Jumeirah, however it looks, is that only it will give you a genuine sense of elegance setting. Floor-to-ceiling glass windows, you'll feel the ocean breeze, 360-degree views of the Gulf and the exciting Dubai skyline is an inspiring and thrilling display of our way and life.

UNLIKE ANYTHING BEFORE IT



ABOVE IT ALL

Cutting-edge architecture, exclusively designed, luxurious interiors, the seamless coherence of privacy and association, make your home at One at Palm Jumeirah truly a cut above everything else. But what makes One at Palm Jumeirah even more spectacular is the sense of freedom, infinity and true bliss that comes from enjoying truly views that encompass everything on the horizon and beyond.



Timeless Elegance

VIEWS TO INSPIRE

Delivered to your door, these exceptional views await as timeless, designed luxury. The striking minimalist design of One at Pella, allows you to enjoy privacy and exclusivity. With some of the most views in the city, you can always look to an extraordinary view. With a view of the city, you can always look to an extraordinary view. With a view of the city, you can always look to an extraordinary view.

MANAGED BY

 *Dorchester Collection*

ONE AT PALM JUMEIRAH IS MANAGED BY
DORCHESTER COLLECTION, AN ULTRA-LUXURY BRAND
WITH AN IMPRESSIVE PORTFOLIO OF THE WORLD'S
FOREMOST LUXURY HOTELS IN EUROPE AND THE USA.



 *Dorchester Collection*
DUBAI

Dorchester Collection likes to do things differently. That's why its guests trust them to take the very best care of them and, in return, they show their loyalty by putting them at the heart of everything they do.

Across all the properties, worldly people are given a relationship with the way of life found only in its legendary hotels. Guests appreciate being recognised as individuals and having the same friendly faces welcome them back. Together, they thrive on forming these meaningful relationships, creating lasting connections, providing genuine care and offering some of the most sought-after experiences around the world.



THE DORCHESTER, LONDON

Legendary

WAY OF LIFE

The 'wow' moment is different for everyone, but one thing's for certain – you'll find it at Dorchester Collection. Pass through the doors of its hotels and you'll experience something truly special – something you'll feel from the moment you arrive until long after you leave.



With Dorchester Collection at the helm, One at Palm Jumeirah offers its esteemed residents the total convenience of the superb à la carte services, making everyday living absolutely effortless.

You have at your disposal a range of services, from classics such as maintenance, doorman and valet parking, to premium services that include housekeeping, in-residence catering, unique dining events, and a butler.

The exclusive concierge is here to assist with an expert tailored selection of dining choices, events, venues, tickets, and everything else you need for a dynamic social and cultural life in the city.





MAJESTIC ARRIVAL

Every trip home to One at Palm Jumeirah is an occasion of unparalleled exhilaration, as the automated gates open to reveal a stunning layout featuring reflection pools and waterfalls.

Drive up to your residence in style along a pristine courtyard lined with signature artistic centrepieces from the world famous landscape architect, Wadhvani Deyrovic.

The beautiful promenade leads straight to the upper ground floor with a convenient and private valet drop-off area.



EXCLUSIVE ACCESS

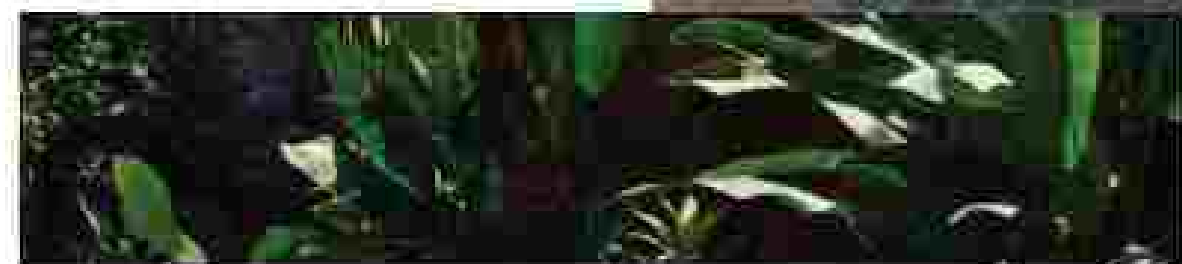
As you make your way up to the spectacular lobby of One at Palm Jumeirah, your car is taken down to an automatic parking pod. Not holding all 98 exclusive units, One at Palm Jumeirah has only 400 car parks.

Spacious pods ensure your high performance vehicle is always ready and ready space for parking with automatic parking, more clearly marked for charging stations and carpooling.





EXQUISITE AND REMARKABLE



Plunge Pool

INFINITE BEAUTY

World-renowned landscape architect Vladimir Djurovic has brought his groundbreaking vision to One at Park Avenue to create an ever-inspiring (and ever-evolving) 24-hour outdoor resort with a unique design, light and view (and throughout green spaces, offering a healthy balance of connectivity, beauty and serenity.

With lush verticality, green terraces and organic details, the landscape inspires a sense of deep relaxation, comfort and well-being. A connection to nature and a sense of peace and tranquility is woven into the design and living experience.



“OUR GUIDING DESIGN PHILOSOPHY IS TO PUT NATURE CENTRE STAGE”

— Vladimir Djurovic

Moving up through the building from the lower ground floor through to the rooftop garden, the character of the landscape changes from shaded, earthy and textured to open, dry and luminous. Water is also a constant feature throughout the unprecedented residence. With water mirrors in the main lobby and glistening and soothing elements throughout, you'll get the feeling of living in a modern oasis of luxury.

Highly textured, natural materials characterise the ground level gardens, providing a solid base that anchors the entire project. These gardens cater to diverse uses and experiences. From big gatherings to more intimate and contemplative moments.



LUXURIOUS LIVING

Once we move up to the apartment terraces, the textures and materiality turn more architectural following those of the interior. The building offers gardens for luxurious outdoor living to its residents on their own private terraces. Vegetation, green screens, and water elements enrich the outdoor living experience of these spaces.





THE PERFECT BALANCE OF LUXURY AND TRANQUILITY

The outdoor terraces of each One at Palm Jumeirah home are a bliss to behold, framed by sweeping views of the Arabian Gulf and the city beyond. They feature relaxing lounge seats, ample space for relaxing or entertaining, and natural touches of palm water and citrus. The terraces are located in prime locations, making the most of a unique view of freedom and tranquillity.



BRILLIANTLY HANDCRAFTED

The residences at One at Palm Jumeirah are carefully crafted and considered environments, melding the energy at the heart of one of the world's most dynamic, young cities with the tranquility and solitude of a unique, inspiring sanctuary. Two of the world's most forward-thinking firms, Super Potato and Ellipsen, have brought to life their own unique, yet symbiotic visions - each a masterpiece of interior design. Each space takes its cues by looking both outward to reflect the vibrant spirit of Dubai, while looking inward at the unique character of those who will find their refuge here, creating extraordinary homes that are a celebration of life lived to the fullest.

WELCOME TO A WORLD
WITHIN A WORLD. YOUR WORLD,
BEARING YOUR DISTINCTIVE
SIGNATURE OF ELEGANCE AND
EXCLUSIVITY, WHILE OFFERING
PEACE AND SECURITY TO ALL
WHO ENTER AND LIVE HERE.



Designed to allow for easy access and freedom
with the development of complete privacy
for their wealthy residents. Over at Palm Jumeirah,
these separate areas include private and semi-private
beach clubs, swimming pools, more than two residences.
From the moment you arrive, you'll feel the spirit of
the city, your own, as you'll be at a level of
elegance, difficulty, and comfort like no other. You
can relax, enjoy the view, and enjoy the best of both
worlds of the building, each with its own
charm, by you, with the comfort and guidance
of the world's most elegant.

NATURAL DESIGN

BY SUPER POTATO

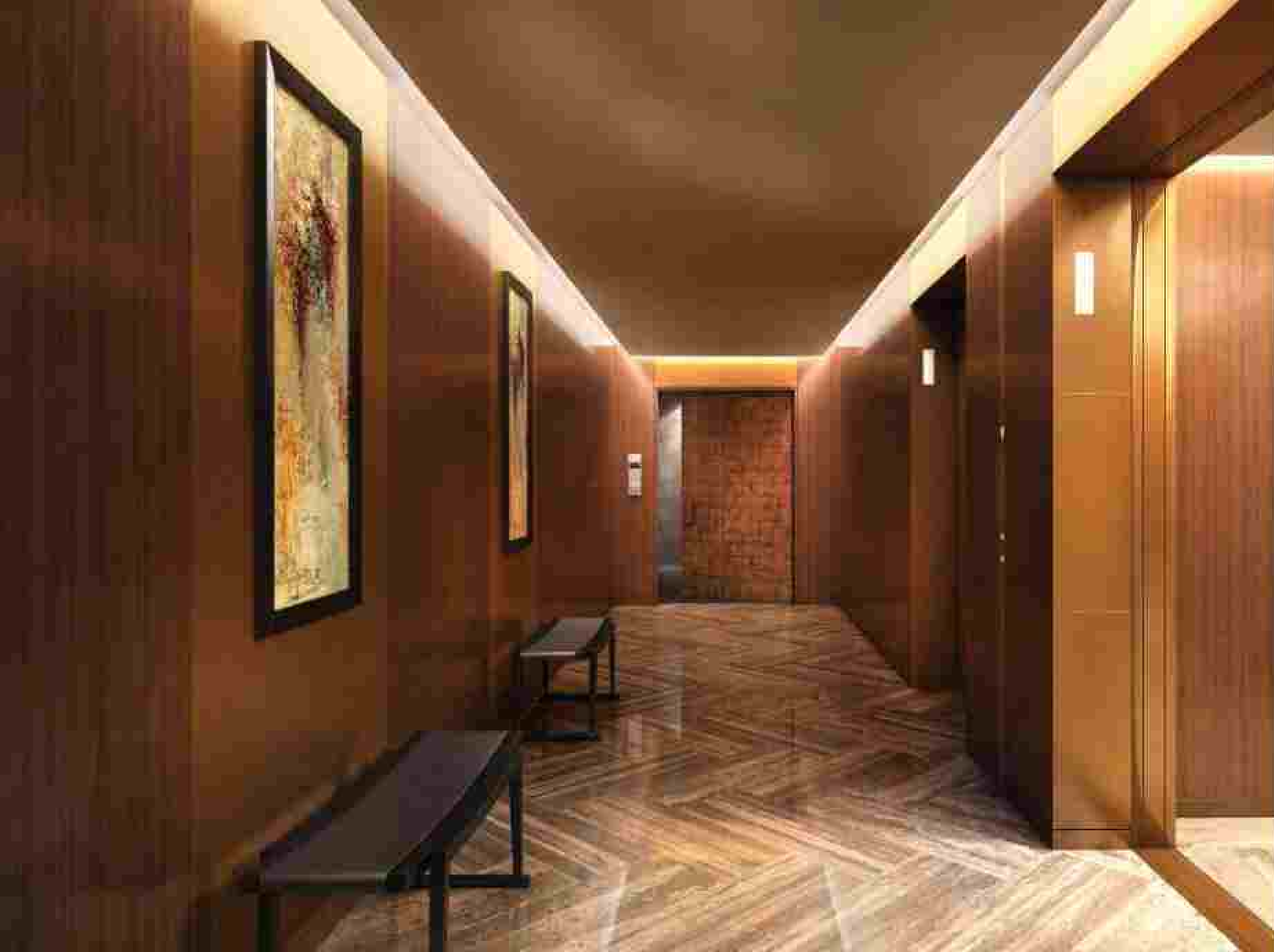
NATURAL AESTHETIC

Based in Japan, the internationally acclaimed design firm Super Potato is renowned for fabricating spaces that blend an Asian sensibility with celebrating the unique character of each project's location. For their design, they use NATURAL stone and woods with glass and steel to craft a minimalist environment that is surprisingly warm and inviting. Rounded, highly tactile forms that nod to back to George Nakashima, Isamu Noguchi and other mid-century modern classics can be found in the furniture and fittings.



"The original inspiration for One of Palm Jumeirah comes from the use of stone, wood, metal and glass to create the feeling of living in the air and living amongst nature. We restructured the visual and physical attributes of materials found from legendary Japanese architecture and interiors - iron, timber, natural stone, and bricks - to incorporate into our design to enhance the beauty of the space. I believe this is a new method of expressing natural forms. Furthermore, the importance of our design is the feeling of natural changes around us such as water, clouds, wind and light and how to express these feelings through design."

Takashi Sugimoto
President
SUPER POTATO CO. LTD.



NATURAL DIVERSITY

The rolling hills around edges of One at Palm Jumeirah hills like a canopy, tranquilly enveloping the building, capturing vibrant spaces of its common areas. They spruce, aromatic yet elegant feel has been successfully preserved by One at Palm's New Super Pavilion.

View to rolling horizon from the living area with light by day, as well as fully use inspiring view by night.

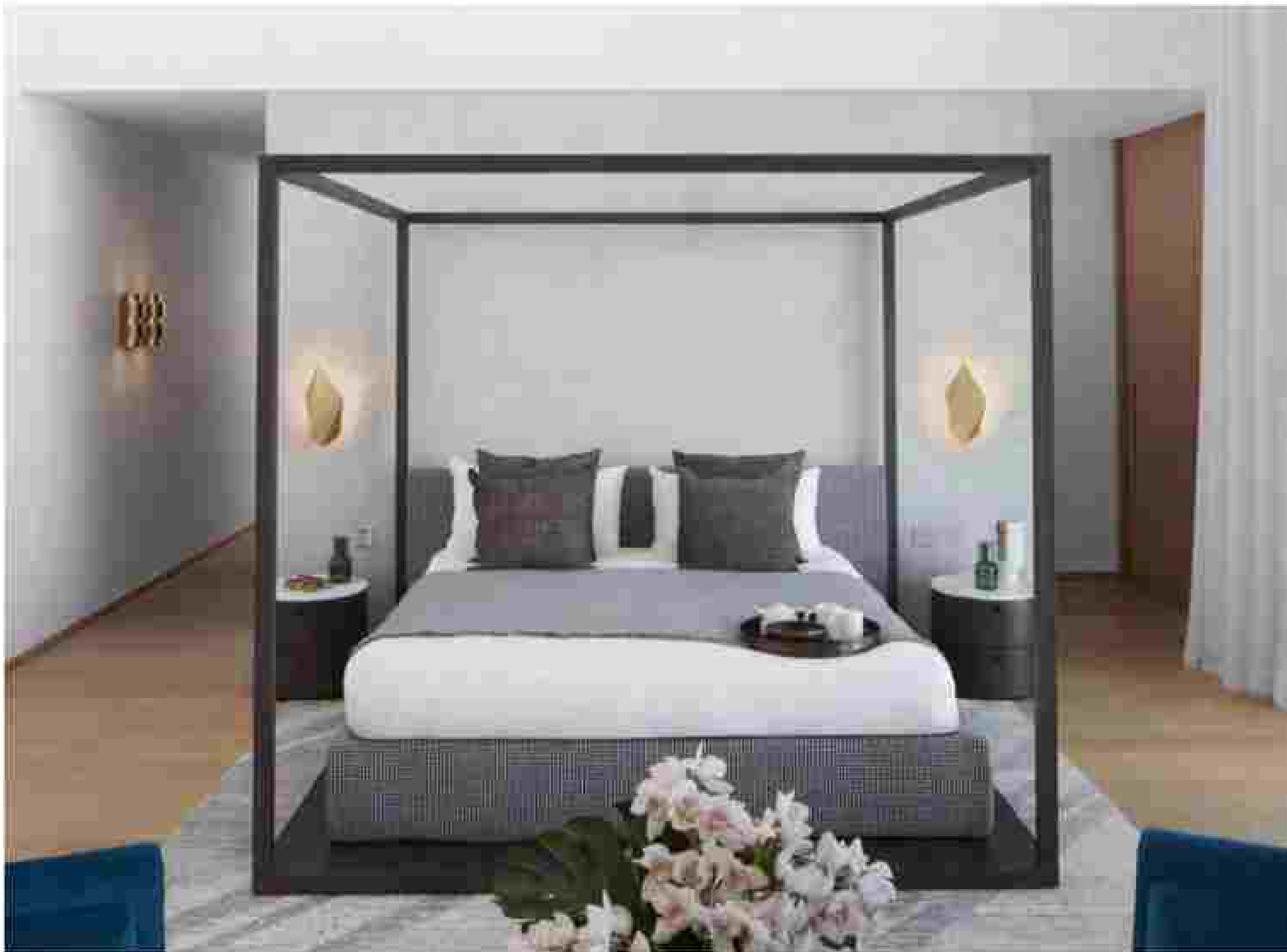
One at Palm is a luxurious and sophisticated, yet completely comfortable and healthy.



INTIMATELY BEAUTIFUL

The Jazzy Petrus amongst apartment is a modern, yet refined, serene yet bold, creating an inspiring life beauty is achieved through every architectural element.

Minimal, serene and soothing lighting, natural and elegant materials, relaxing artwork, ultimate yet comfortable and stylish living spaces are just some of the elements that come together to create a lovely intimacy of life and lifestyle.





The cultural design and technical level of the furniture comes to the fore in the dressing room.

The dressing room features well-proportioned traditional and modern, where culture and art are an integral and essential element of everyday life.

The view displays a multidimensional view of nature and the importance of successful creation; the contrast between the sea and the sky, the modernity of Dubai and the history of the location.

The modernity, Hafeed Furniture creates a new space where you can create your own style and be inspired.





Beyond simple storage for your wardrobe, the generous walk-in closet features built-in ottoman and benches.





A thoughtfully designed terrace, complete with landscaping and a view, provides the perfect setting for leisure and company.



Relaxing Design

TIMELESS DESIGN

by Elicyon

MINIMALIST AESTHETIC

Accented designers of London's One Hyde Park, Elicyon creates unique, customised spaces that elevate luxury lifestyle design to an art form. The interior scheme of the penthouse conceptualised by Elicyon is sophisticated and modern, conceptualised in all aspects to the breathtaking panoramic beach views.

Natural materials and finishes, from lacquered wood and leather to stone and silk, combine in a glamorous, streamlined fashion. Elicyon's minimalist aesthetic highlights the interplay of natural and modern motifs, in a timeless, stunning look.





The selection of the Eliseo designed chandeliers reflects and enhances the key elements of the world renowned design and demonstrates their expertise in reflecting the local heritage through interior spaces.

Decor elements, materials and finishes, such as smooth marble, different forms and shapes of glass and metals, and stone veneer (used here with jib) contribute to enhance the interior space making it a truly unique environment that inspired it.

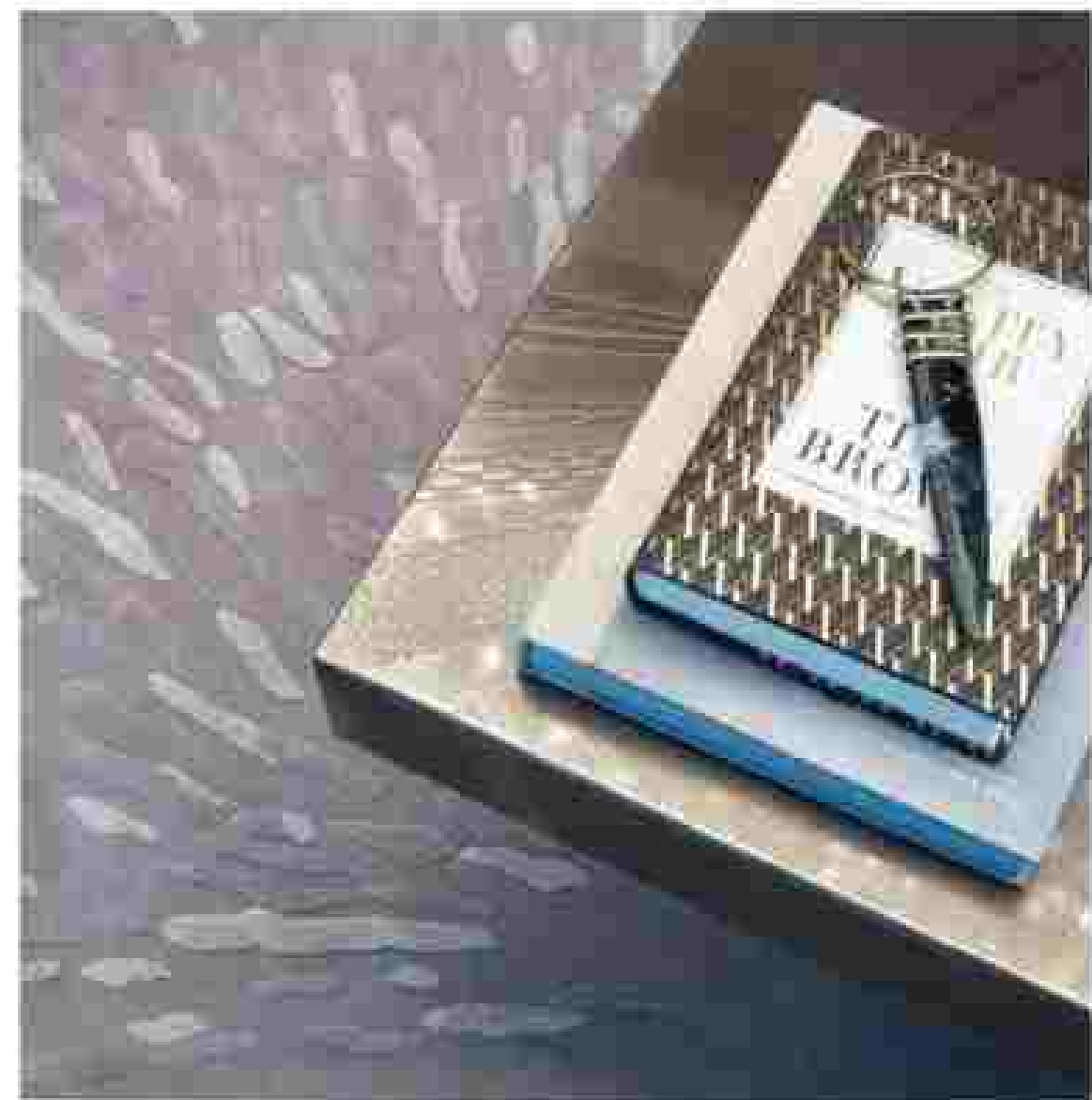


"THE BIGGEST
PIECE OF ART IN THIS
PROPERTY IS THE VIEW"

— Charu Gandhi
Architect, Founder and Director of Eliseo







"FOR ME, THIS SPACE CULMINATES
IN THE SCREENS AND THE ARTWORK
FRAMING THE STUNNING VIEWS.
ALL SEEN THROUGH THE LENS OF
BEAUTIFUL TEXTURES AND MATERIALS"

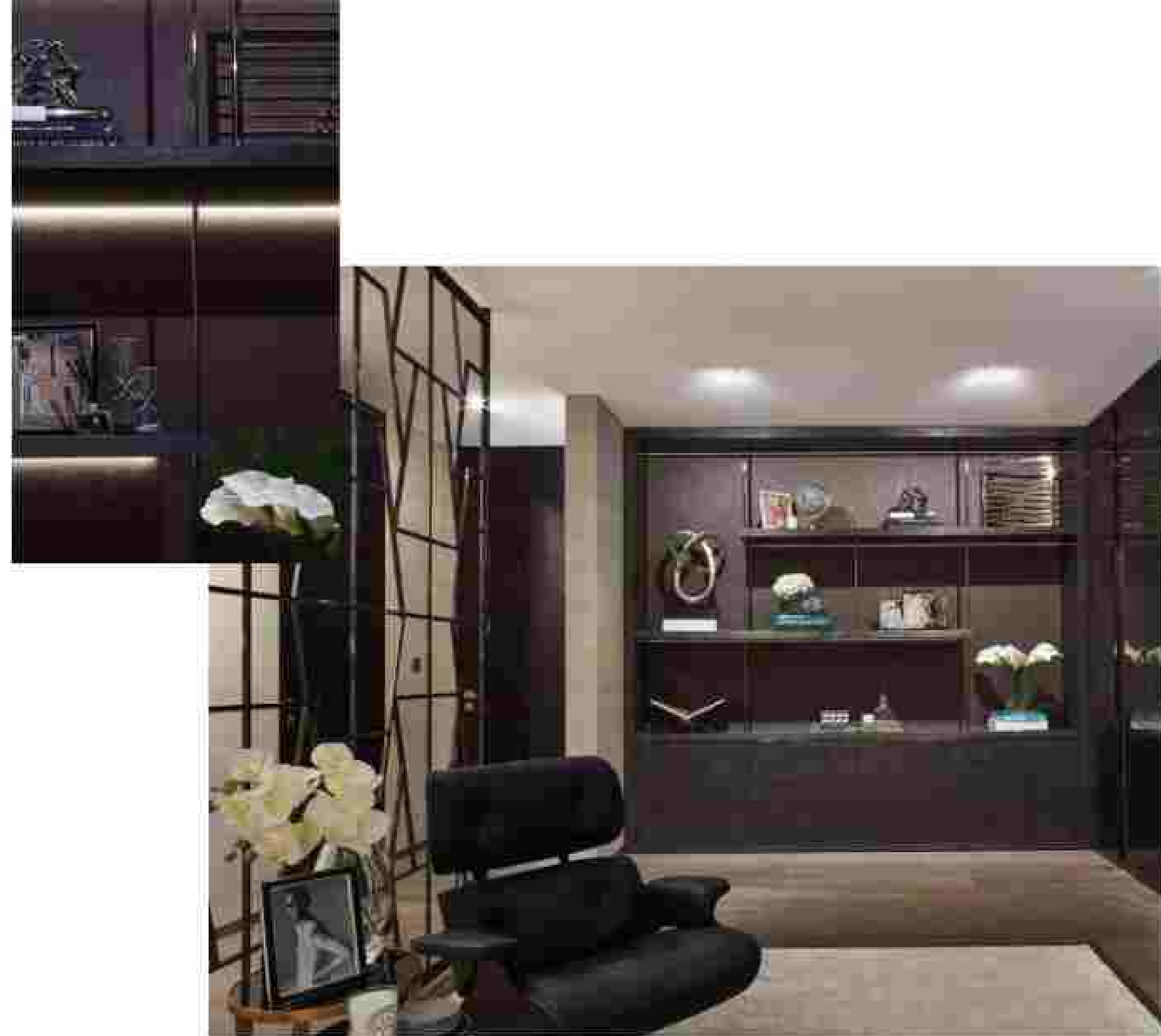
— Charu Gandhi
Architect, Founder and Director of E Boyan

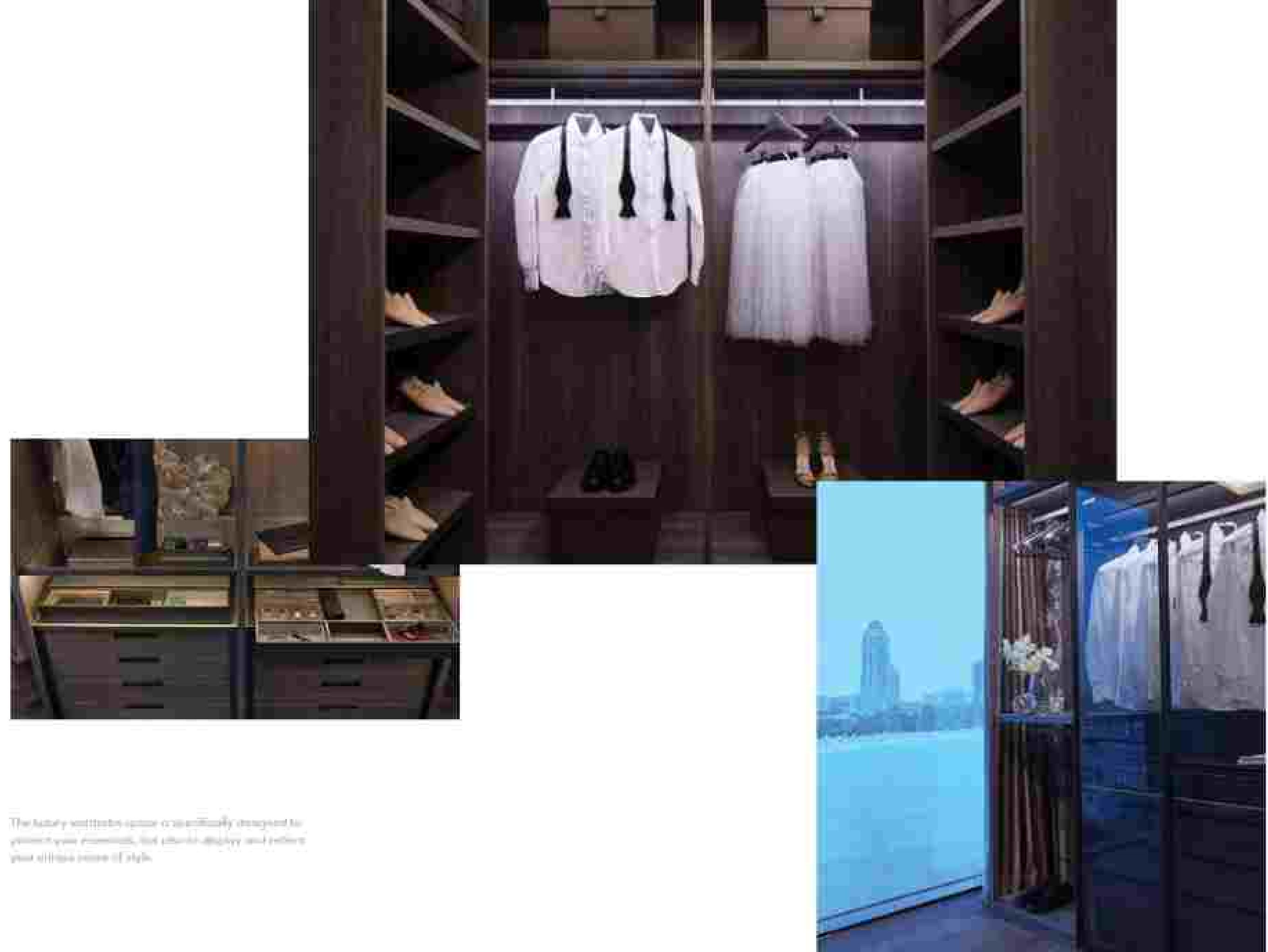
The double balcony room is simple and elegant. The
ground plane of bamboo, glass and stainless steel,
wood paneling and stone wall are all chosen
and combined specifically for the exceptional
space.

The stunning feature and detail of the building
being seen through the glass wall, perfect for
relaxing, open to the world both from inside and
outside, and a perfect, more relaxed, private, and
controllable space.

THE COMFORT OF STYLE

The exclusive yet transparent wall is created
through the play of use of materials
and light patterns in the vertical glass screens.
The design combines reference to traditional
Middle Eastern architecture, creating an
exclusive space. It is a perfect, modern design
allowing for a clean and classy, inspired work and
offices, providing the possibility to be
relaxed and pleasant, depending on your
business, work, or daily needs.





The luxury wardrobe is specifically designed to present your essentials, but also to display and reflect your unique sense of style.



Elroy has been pivotal for the overall
regulation for the design of the apartment
in such and every aspect, including a range
of identity elements such as the beautiful
hardwood tile wallpaper, which found
the use of heavy materials with intricate
artwork and detailing.





COMFORT AND FUNCTION

The media and lifestyle lounge is another secluded entertainment space that allows you to disconnect from the everyday world and instead connect with your loved ones. You can enjoy a variety of entertainment options in the ultimate luxury style.

RESIDENCES FEATURES

HIGHLY PERSONALISED

OPEN FLOOR PLANS

COMPLETE PRIVACY

FULLY AUTOMATED TECHNOLOGY

FINEST MATERIALS

STATE-OF-THE-ART APPLIANCES

AMENITIES PLAN LOWER LEVEL

- 1 OUTDOOR POOL
- 2 OUTDOOR CINEMA
- 3 PLAYROOM
- 4 SPA
- 5 GYMNASIUM
- 6 VITALITY POOL
- 7 LAP POOL
- 8 INDOOR CINEMA
- 9 RESTAURANT
- 10 ID JETTY
- 11 BEACH CLUB
- 12 PRIVATE BEACH



AMENITIES PLAN UPPER LEVEL

- 1 BUSINESS CENTRE & LIBRARY
- 2 MAIN LOBBY/RECEPTION
- 3 MEETING ROOM
- 4 VALET & DROP-OFF



FOR MORE INFORMATION

OMNIYAT GROUP SALES OFFICE

The Opus by Zaha Hadid

Business Bay, Dubai, UAE

sales@omniyat.com

www.omniyat.com

800 666 UAE

+971 4 511 5004 INTERNATIONAL

+91 97696 23231 INDIA

+44 7918 797685 LONDON

+86 188 1771 6669 CHINA



DISCLAIMER

The images, views, perspectives, elevations and general illustrations, finishes, appliances and hardware contained in this brochure are provided for illustrative purposes only. Nothing in this brochure shall be construed as a contract or any other legal document. The actual design, construction, materials, finishes, appliances and hardware may vary from those shown in this brochure. The actual design, construction, materials, finishes and other conditions and details shall be subject to change at any time without notice. The actual design, construction, materials, finishes and other conditions and details shall be subject to change at any time without notice. The actual design, construction, materials, finishes and other conditions and details shall be subject to change at any time without notice.

OMNIYAT
DETAILS MAKE PERFECTION

OMNIYAT
DETAILS MAKE PERFECTION