

ELLINGTON COLLECTION  
AT DOWNTOWN



**DETAILS  
ARE THE  
NEW  
BLACK**

WE SEARCH  
THE WORLD  
FOR WHAT  
WE DESIRE,  
ONLY TO  
COME HOME  
TO FIND IT  
THERE ALL  
ALONG.

Where we live is often a reflection of who we are or what we want others to see in us. It is an extension of our values, and the standard by which we aspire to. Residences should appeal to the mind, as much as they do the heart.

It is not merely about a location or design - it is an expression of the life we live and all that we hold dear. Artisanal. A meticulous attention to detail in the pursuit of architectural excellence.

Exceptional. Because living well will never be subjective.

**"SPACE IS THE  
BREATH OF ART."**



# DESIGN- FIRST THINKERS



We challenge the expected. That luxury can be about simplicity, and that less is very often, more. Rather than simply providing people with a space to inhabit, we differentiate ourselves through our innate understanding of how people actually want to live. As a boutique developer headquartered in Dubai, while we look ahead to the future, we know that life is lived today. We create signature residences known for their substance, not just style and innovate through our standards of build quality, design and a long-term commitment to shaping the Dubai real estate landscape with a reputation built on trust and credibility.

We benchmark our standards against the world's best. With clientele that are exceptionally discerning, we focus on creating products that stand out; from original thought in architectural concepts, to the principles of design and development, right through to the finest details in bespoke craftsmanship and interiors. An Ellington property offers investors and residents the opportunity to acquire and live in homes that not only match their refined taste and style, but also surpass all expectations for the finer things in life.

# FROM DESERT TO DESTINATION CITY

A city with rich cultural heritage, civilisation in Dubai can be traced back as far as 3000BC. For centuries, residents of the coastal town depended on fishing, pearl diving and trade for their livelihood, something that did not change until the discovery of oil in the second half of the 20th century. Under the guidance of visionary leaders, Dubai rapidly transformed from a quiet settlement to a world-class city in a matter of just decades.

Today, Dubai is synonymous with success. The bustling metropolis has made a name for itself across the globe with innovative projects including the Palm Islands, Dubai Opera and Burj Khalifa, the world's tallest building. Dubai will once again take the global centre stage when it hosts the World Expo in 2020.

One of the most multicultural cities in the world, Dubai's population of 3.2 million people represents nearly 200 nationalities.



# THE HEART OF DUBAI BEATS HERE

An aerial photograph of Dubai, United Arab Emirates, during the golden hour of sunset. The Burj Khalifa is the central focus, its spire reaching towards the sky. The city's dense skyline of skyscrapers is visible, with the Dubai Canal winding through the lower part of the frame. A white callout box with a thin white line pointing to a specific building in the downtown area contains the text 'ELLINGTON COLLECTION AT DOWNTOWN'.

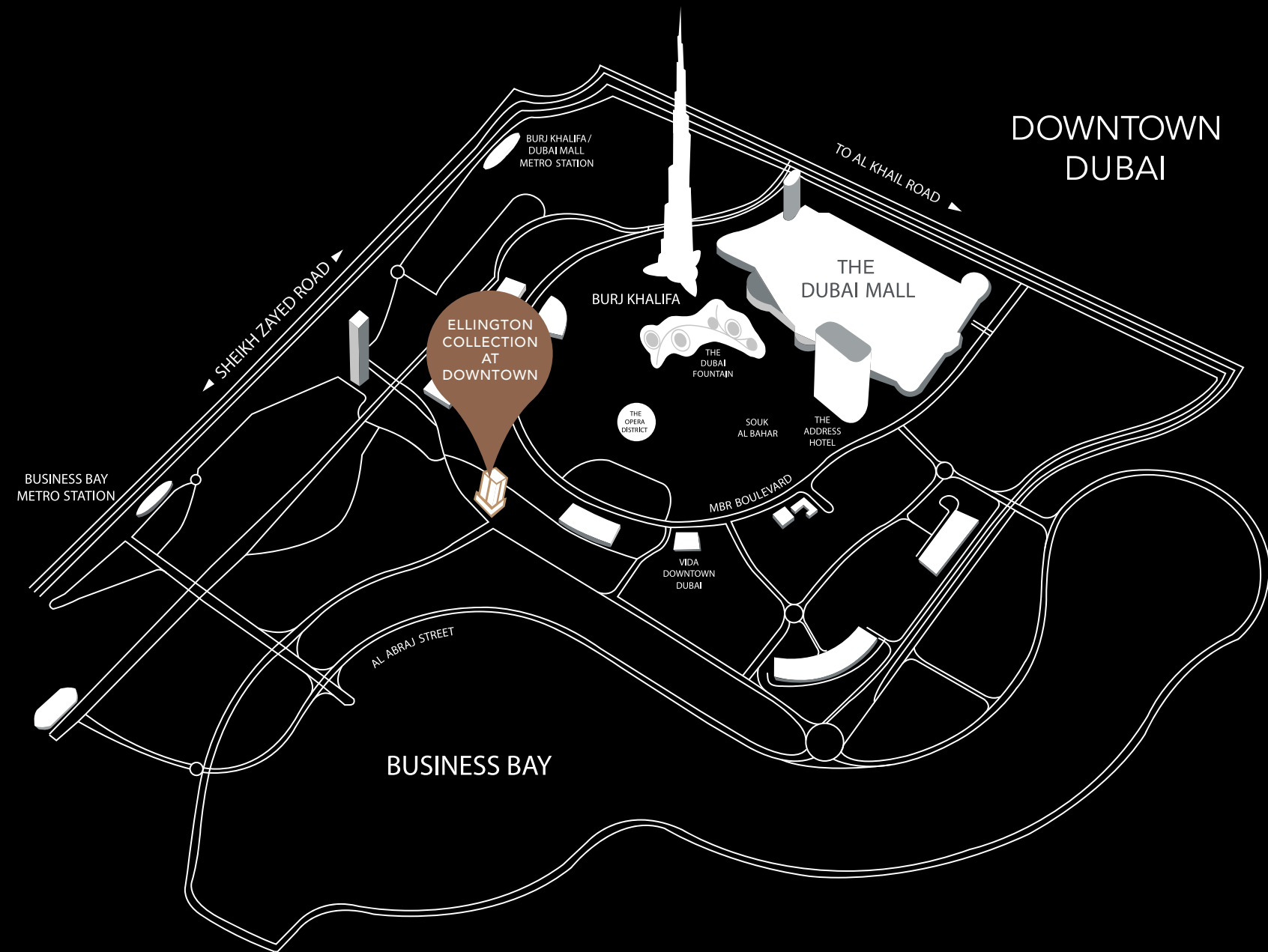
ELLINGTON  
COLLECTION  
AT DOWNTOWN

Downtown Dubai and Business Bay are two of the most sought-after neighbourhoods in Dubai and with good reason. Located adjacent to one another, both neighbourhoods emanate a cosmopolitan vibe and offer world-class retail, dining and entertainment experiences.

Downtown Dubai, renowned for the iconic Burj Khalifa and The Dubai Mall; the world's largest luxury mall, is also home to beautifully landscaped walkways, lush green parks and some of the trendiest hotels in the city.

Just south of Downtown Dubai, Business Bay's claim to fame is JW Marriott Marquis, the world's tallest hotel. Featuring modern skyscrapers and Bay Avenue's family-friendly recreational facilities including a skate park and jogging track, and soon the Dubai Canal, the neighbourhood is a natural choice for many residents in the city. Centrally located, both Downtown Dubai and Business Bay offer seamless connectivity to the city via the Dubai Metro red line and the Sheikh Zayed Road and Al Khail Road expressways.

# SEAMLESSLY CONNECTED



**2** <sup>N</sup>/<sub>M</sub>  
MIN  
OPERA  
DISTRICT

**2** <sup>N</sup>/<sub>M</sub>  
MIN  
BURJ KHALIFA/  
DUBAI MALL

**8** <sup>N</sup>/<sub>M</sub>  
MIN  
DUBAI  
INTERNATIONAL  
FINANCIAL  
CENTRE

**12** <sup>N</sup>/<sub>M</sub>  
MIN  
MEYDAN  
RACECOURSE

**16** <sup>N</sup>/<sub>M</sub>  
MIN  
DUBAI  
INTERNATIONAL  
AIRPORT

**17** <sup>N</sup>/<sub>M</sub>  
MIN  
DUBAI  
CREEK



# WHERE ARCHITECTURE MIRRORS ART

Created with contemporary lifestyles in mind, Ellington collection at Downtown offers a truly distinct setting inside out. A sleek, contemporary glass veneer wraps around private residences that echo the design sensibilities of its inhabitants. Where beauty and function are at home with each other, and spaces evolve into exceptionally well-thought urban narratives.

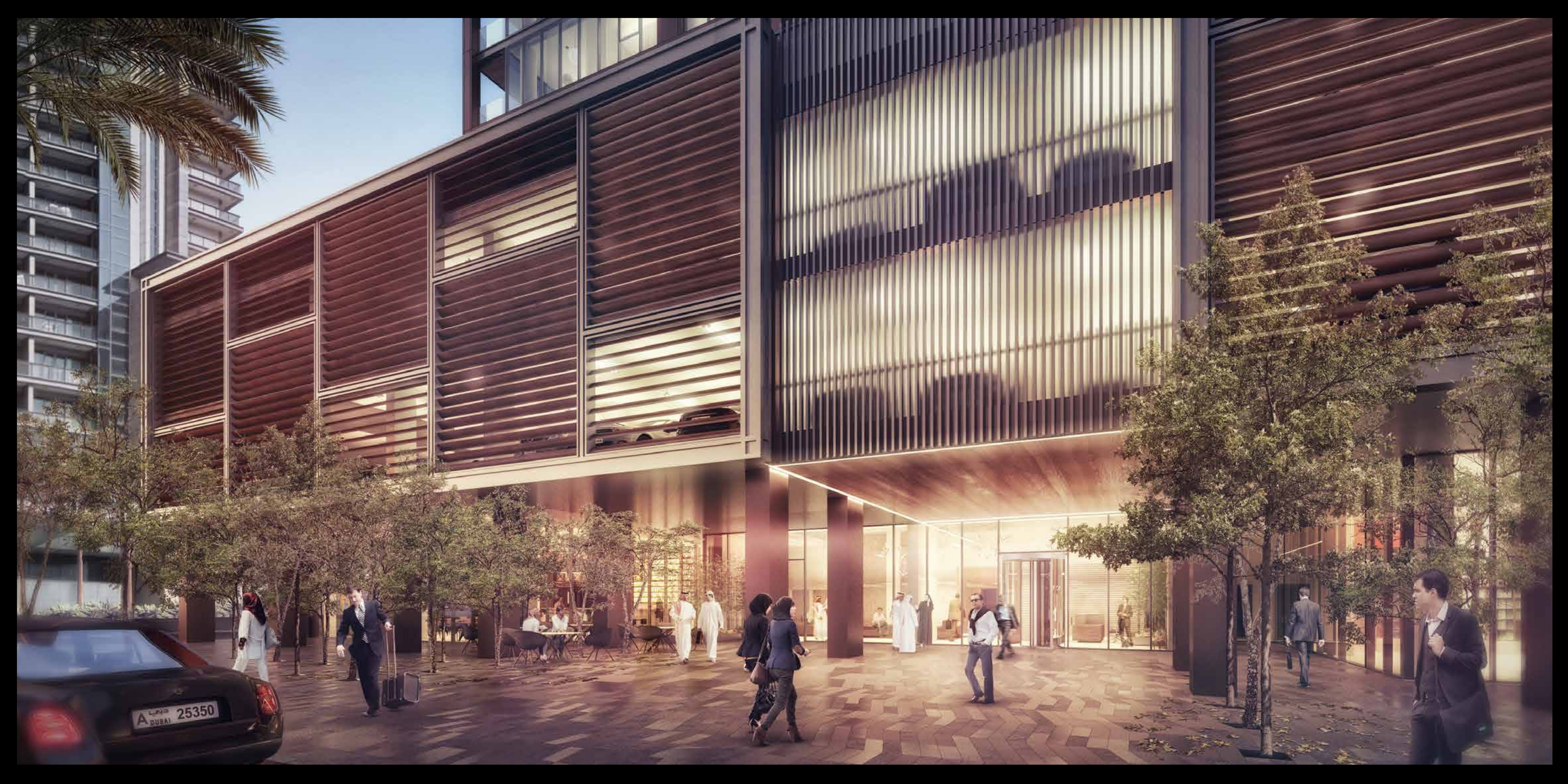
From a dramatic point of entry that stays with you even long after you've left, to a nuanced, bespoke approach to how living spaces are designed and curated. Every touch point from material specifications and finish quality to interiors and lighting shows an intuitiveness and sophistication in execution.

Unmistakably luxurious, created with bold, warm colour palettes, elegant and well-chosen durable finishes, sculptured lights and unexpected details, every residence at Ellington collection at Downtown is a chic, modern and bold expression of you.



Ellington collection at Downtown was voted 'Best Residential High-rise' at the Arabian Property Awards three years in a row. The building was designed to resonate with individuals who consider art, innovation and refinement integral to their lives. Conceptualised by the Perkins+Will team, winners in the 'Large Architecture Firm of the Year' category at the same award ceremony, DT1 stands out as a space that has the ability to transform and enhance the lives of its residents.









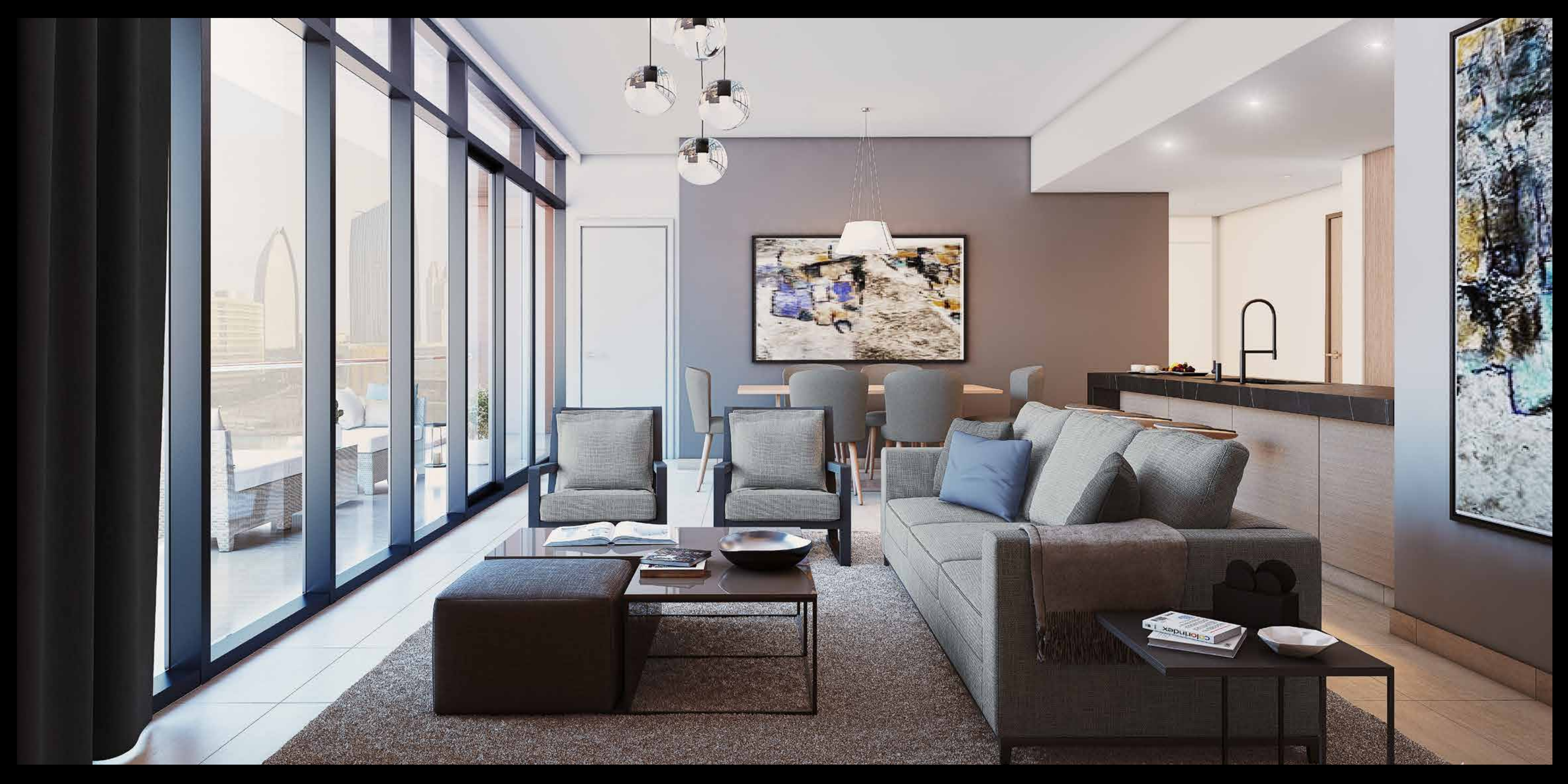
**ELEVATING  
THE ART  
OF LIVING  
WELL**





# A CLASS OF ITS OWN

DT1 was designed to offer residents the opportunity to live according to their own exacting standards. The living rooms and kitchens of each unit feature both, laminated wood and lacquer joinery, and are interconnected to extend a more spacious feel. The kitchens also feature integrated appliances, an under-mount kitchen sink and a dramatic mixer in addition to carefully crafted joinery details. Floor-to-ceiling windows are used to maximise natural lighting in every room and allow for sweeping views of Downtown Dubai





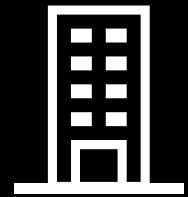




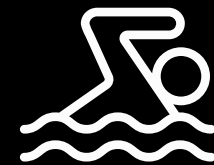
# MODERN CLASSIC IN THE MAKING

Elegance and attention to detail are integral to DT1, and bathrooms are no exception. Modern in design, beautiful yet functional; they feature quartz vanity countertops, integrated lighting, laminated wood and lacquer built-in joinery, as well as his and hers medicine cabinets and sinks.

# DT1 AT A GLANCE



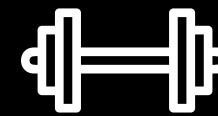
16 LEVELS +  
GROUND



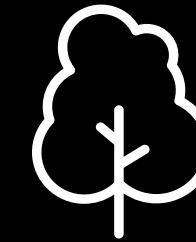
LAP & LEISURE  
POOLS



CLUB  
LOUNGE



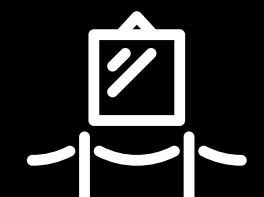
GYM



LANDSCAPED  
AREAS



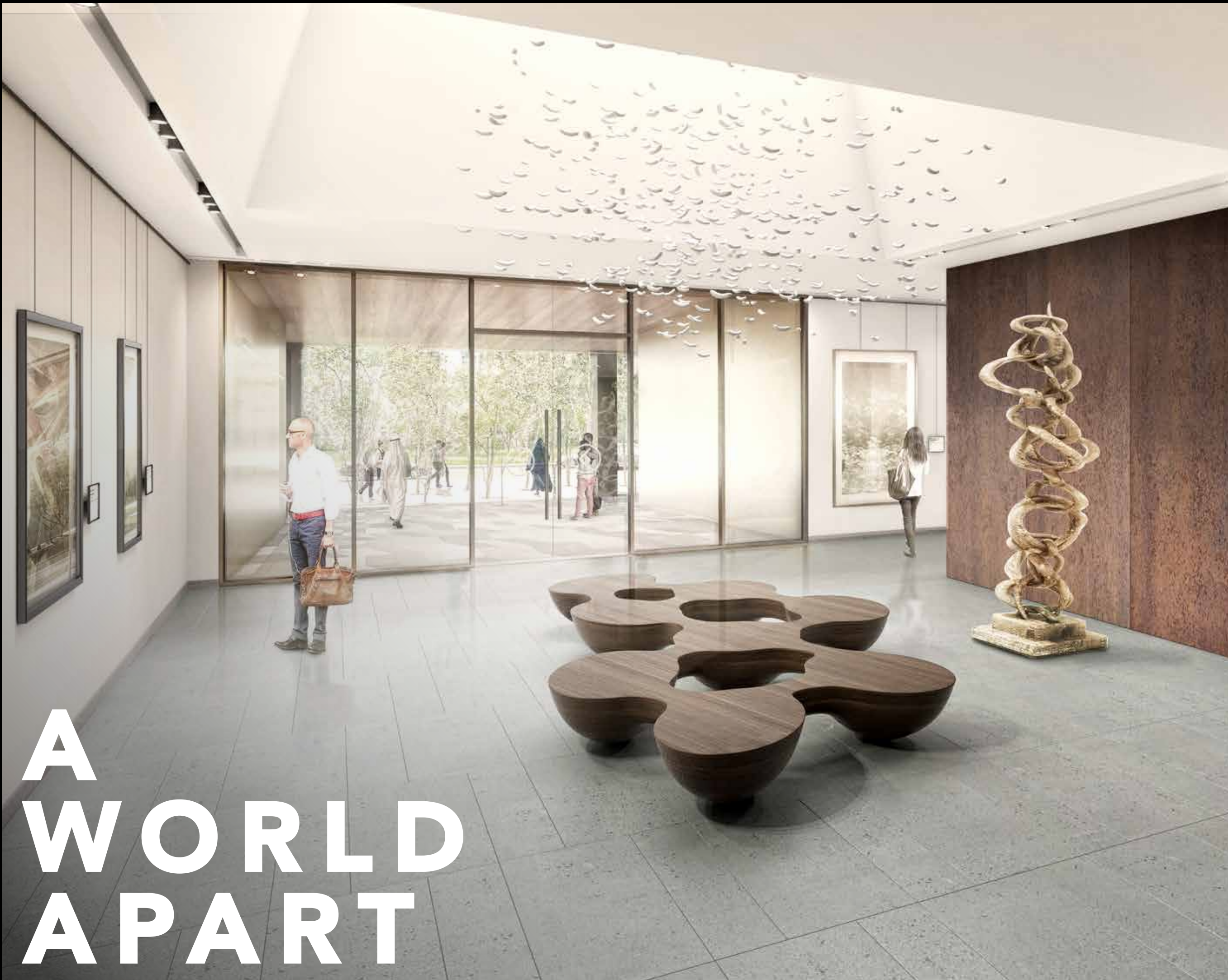
RETAIL



ART  
GALLERY

DT1's facilities were chosen to inspire residents to achieve a balanced lifestyle. Get in shape at the Fitness Centre which features state-of-the-art equipment for cardiovascular workouts and freestyle weight training. Take a dip in the Leisure and Lap Pools on level 3, and enjoy the views that come with an invigorating workout. Or simply enjoy quality time with family in the Games Room.





# A WORLD APART

For art enthusiasts, the Art Gallery on the ground floor features a sun-drenched open terrace that welcomes in natural light. Whereas, the Reading Patio, and Outdoor & Club Lounges are perfect alternatives for those seeking to wind down in the evenings.

To arrange a private viewing,  
please contact us:

Phone: +971 4 278 0888  
Email: [Info@ellingtongroup.com](mailto:Info@ellingtongroup.com)

16th & 17th Floor, Burlington Tower,  
Business Bay, Dubai, UAE.  
P.O. Box 117500

#### Escrow Details

Account Name: DT 1 Escrow Account  
Account No: 0220 0078 6075  
IBAN: AE390530000022000786075  
Swift Code: HLALAEAA  
Bank: Al Hilal Bank  
Branch: Financial Mall Branch, Al Sahel Tower Corniche, Abu Dhabi

Disclaimer: The renderings and visualizations contained in this brochure are provided for illustrative and marketing purposes. While the information provided is believed to be accurate and reliable at the time of printing, only the information contained in the final Sales and Purchase Agreement will have any legal effect.