



MERAAS

VILLA  
AMALFI





# L

*XCLU  
SIVITY  
MEETS  
EXTRAV  
AGANCE*

*Let's talk luxury living. It's all about finding a meaningful place that redefines the way you experience the world. Today, ultimate privilege is having total privacy and easy access to the finer things in life.*

*In a bustling Dubai, an island of upscale possibilities is about to be unveiled with lush lifestyle at its best.*



---

Located at the centre of Jumeira Bay

---

5 km from Dubai central district

---

15 km from Dubai International Airport

---

Direct access from Jumeirah Beach Road

---



---

*SCULPTED IN THE SHAPE OF A TITANIC SEAHORSE, JUMEIRA BAY ISLAND IS FAST BECOMING A SOUGHT-AFTER LUXURY NEIGHBOURHOOD.*

**T**hink about a perfect location: Jumeira Bay is located on the coast of Dubai, with direct access from Jumeirah Beach Road. Here you are close to the central district, can reach Dubai International Airport or Downtown Dubai within minutes, and still enjoy a truly private lifestyle in an elite neighbourhood. Making this destination even more attractive is a branded luxury hotel with a state-of-the-art marina and yacht club, further enhancing the premium coastal offering.



*NEW  
LUXURY  
CHALLENGES  
THE  
ORDINARY.*

**N**ow moving towards the centre of the island, on a slightly raised portion of land, Villa Amalfi reveals majestic homes emerging around a lush private park.

This green space is designed to work as an extended garden and will be accessible only by residents. From the rooftop terraces, breath-taking views are a feast for the eyes. From one side the clear waters of the Arabian Gulf, and from the other the awe-inspiring Dubai skyline.

*Perfect  
simple lines.*

**P**icture modern aesthetics and high-end finishes in truly one-of-a-kind residences. Become captivated by how the sunlight enters through high expansive windows, making the interiors even more comforting. Here, elegant proportions and functional design make for an unparalleled quality of life.



*“Luxurious  
living spaces  
empower  
people  
to create  
extraordinary  
moments”*



*NEW  
PERSPECTIVES  
ADDED  
TO LIFE.*

---



**W**orld-class community facilities provide ultimate convenience within this premium development.

Envision a large outdoor pool, tennis courts, basketball court, cutting-edge gym, changing rooms, fun kids play area, a charming lounge and much more.

A black and white photograph of a woman's profile, facing right. Her hair is pulled back into a sleek ponytail. She is wearing a large, ornate earring with multiple tiers of dark, teardrop-shaped stones and small pearls. Her hand is raised, with her index finger pointing towards her neck. The background is dark and out of focus.

*“Glamour can  
be a state of  
mind”*



*THE  
ULTIMATE  
EXPRESSION  
OF STYLE  
AND  
SOPHISTICATION.*

**W**hen you look around from Amalfi Villas, a seven-star branded hotel is just a walking distance away.

One of only six places in the world where you can experience the richness and exclusivity of a lifestyle reserved for the privileged few. A host of upscale fine dining, sporting, and wellness options are practically at your doorstep, all within Jumeira Bay.





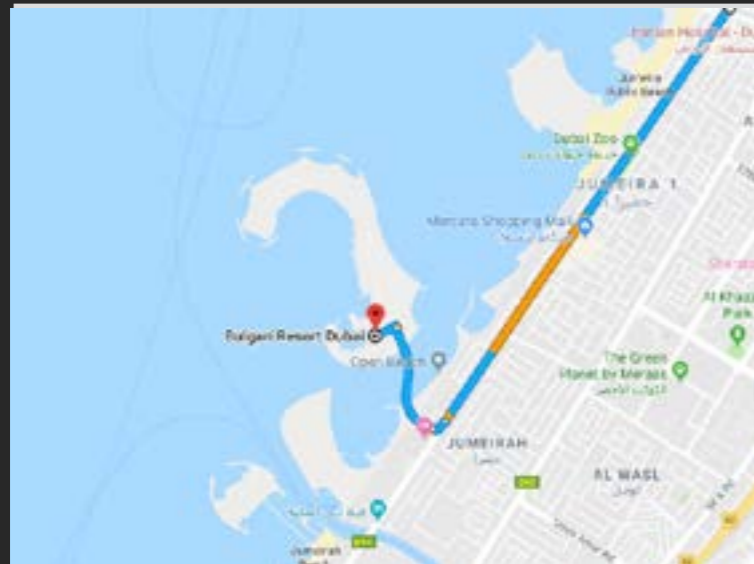
*KEY FACTS*

Located  
at the centre  
of Jumeira Bay



12,5000  
sqm

of private park  
accessible only  
by residents



Direct access  
from Jumeirah  
Beach Road

Next to a  
world-class  
1.7 million  
sqm. marina

1.7 million  
sqm.

15 minutes  
from Dubai  
International  
Airport



Close vicinity to  
upscale dining,  
leisure and wellness  
experiences

Walking distance from a luxurious branded hotel

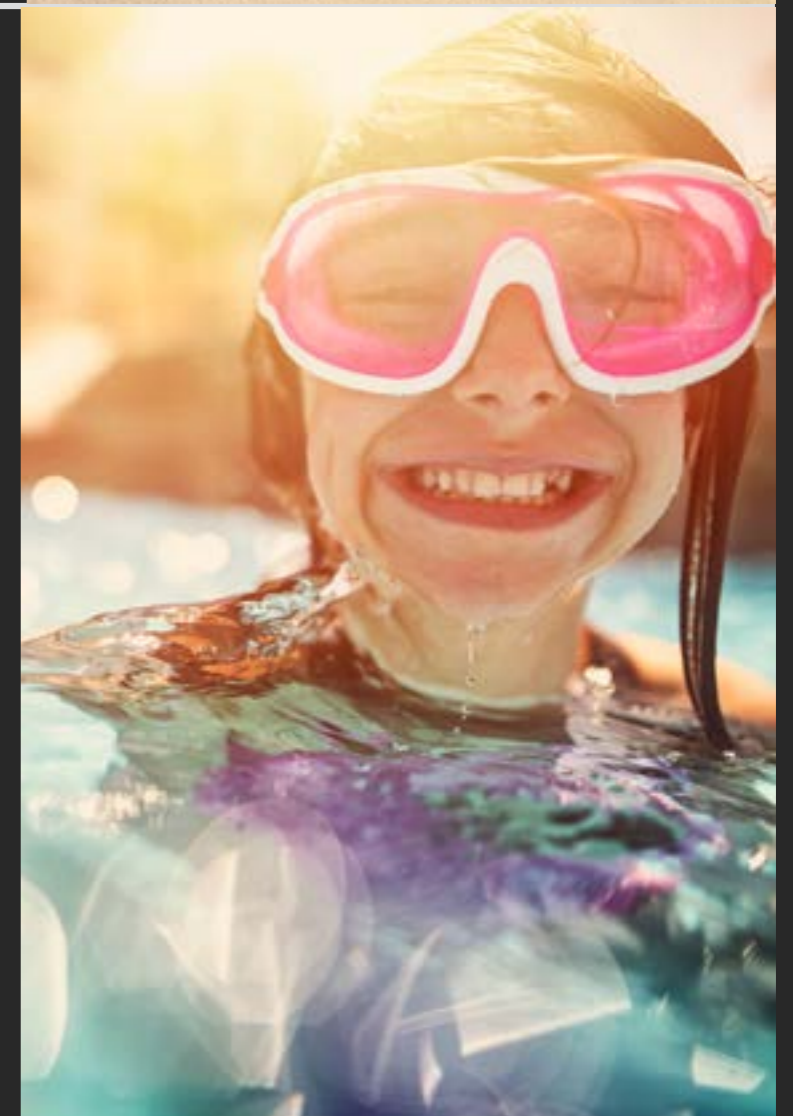


Adjacent to the beach



Contemporary design and high-end finishes

State-of-art community facilities:  
Outdoor pool,  
gym, tennis courts  
basketball court,  
play area, lounge  
and more



Sea view from second floor and terrace





**M**eraas is an innovative holding company that is a key player for strengthening Dubai's global position as a destination to live, work and visit. From landmark destinations to modern residences concepts, Meraas is creating a new urban culture with diverse operations and expertise in real state, retail, food, tourism, leisure and entertainment, hospitality, healthcare, marinas and technology.



## *DUBAI*

---

**D**iscover Middle East's business and tourism hub.

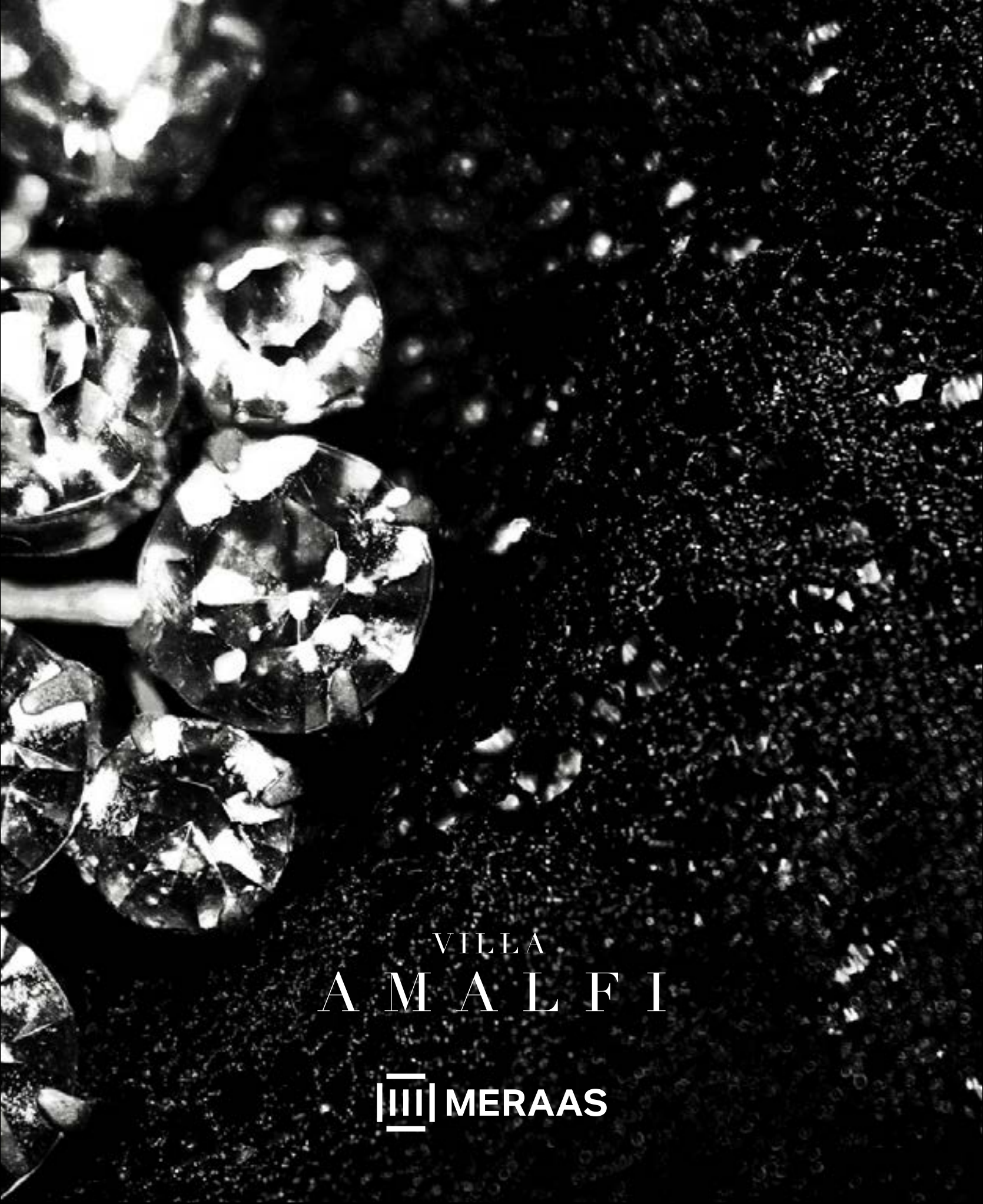
With year-round sunshine, beautiful beaches and luxury lifestyle, Dubai enjoys a competitive combination of cost, market and environmental advantages that places it at the forefront of the globe's emerging markets.

The economy is no longer reliant on oil, but is more diversified, relying heavily on trade, services and finance sectors. Under a wise and progressive leadership, Dubai has prospered in the last decades, making the future look bright.



## CONNECTIVITY

- 2 Minutes – Jumeirah Beach Road
- 7 Minutes – Sheikh Zayed
- 10 Minutes – La Mer
- 10 Minutes – City Walk
- 12 Minutes – Nikki Beach
- 15 Minutes – Burj Al Arab
- 15 Minutes – Dubai Design District
- 15 Minutes – Dubai International Airport Terminal 3
- 45 Minutes – Al Maktoum International Airport



VILLA  
A M A L F I

||| MERAAS



## **Contact Us**

**Toll Free : 800 37373**

**Hotline : +971 52 754 3246**

**Email : sales@drehomes.com**

**Visit Us For More Info:-**

**<https://drehomes.com/property/amalfi-jumeirah-bay/>**