

**BINGHATTI TULIP**  
JUMEIRAH VILLAGE CIRCLE



## Leading the Renaissance of Property in the Region

Each hypertower is a commissioned architectural masterpiece, a magnum opus unto itself, reflective of Binghatti's vision to lead the renaissance of property in the region.







# Table of Contents

**01.**

Project  
Introduction

**02.**

Awards &  
Recognitions

**03.**

Binghatti  
Milestones

**04.**

Binghatti  
Tulip

**05.**

Floor  
Plans

**06.**

Project  
Details





DUBAI  
MARINA

E44  
DUBAI HATTA  
HIGHWAY

BURJ  
AL ARAB

**BINGHATTI TULIP**

E311 SHEIKH  
MOHAMMAD BIN  
ZAYED ROAD

DOWNTOWN  
DUBAI



# 02.

Awards &  
Recognitions



—

## Milestones

**60+**

Projects in  
the region

**10,000+**

Apartments planned  
for completion by  
the next 18 months

Value of

**7 Billion**

**20,000+**

Upcoming  
project units

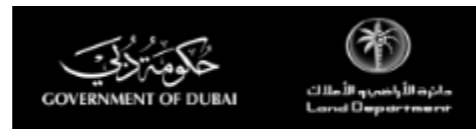
Value of

**20 Billion**





2018



# Awards & Recognitions



03.

Binghatti  
Milestones

# Recent Launches



BURJ BINGHATTI JACOB & CO RESIDENCES



BUGATTI RESIDENCES BY BINGHATTI

Milestones

إنجازات بن غاطي للتطوير



TRILLIONAIRE RESIDENCES BY BINGHATTI



BINGHATTI CREST



BINGHATTI CORNER



BINGHATTI NOVA



BINGHATTI HEIGHTS



BINGHATTI EMERALD



BINGHATTI CRESCENT



BINGHATTI CANAL

Milestones

إنجازات بن غاطي للتطوير



BINGHATTI ORCHID



BINGHATTI LUNA



BINGHATTI POINT



BINGHATTI AVENUE



BINGHATTI AMBER



BINGHATTI ONYX



BINGHATTI GATEWAY



BINGHATTI CREEK

---

## Milestones

---

## إنجازات بن غاطي للتطوير



BINGHATTI MIRAGE



BINGHATTI GATE



BINGHATTI JASMINE



BINGHATTI GEMS



MILLENIUM BINGHATTI RESIDENCES





04.

Binghatti  
Tulip

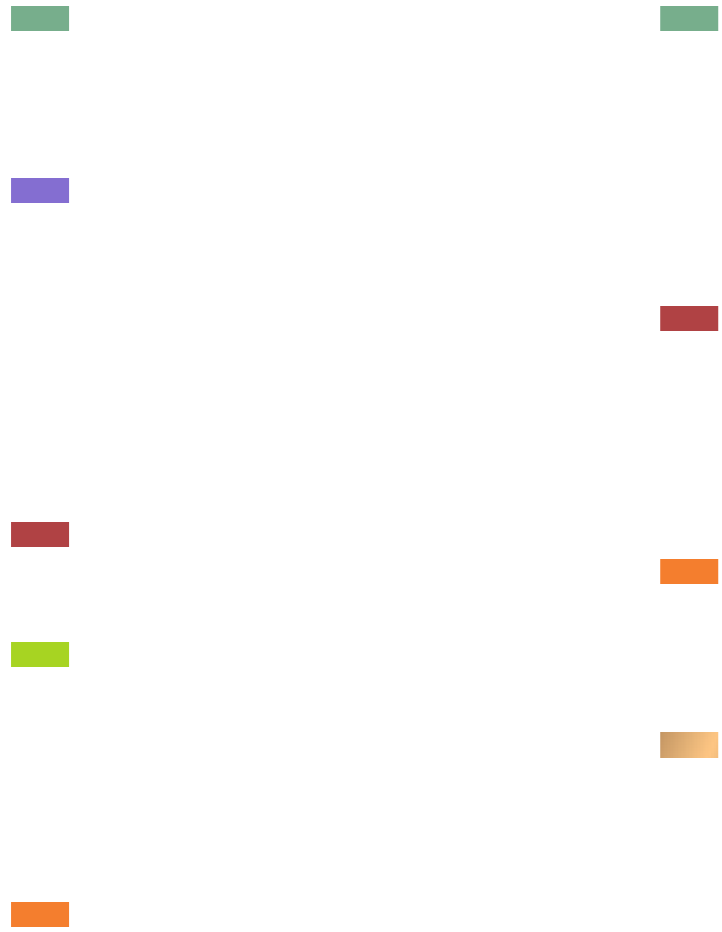
# Binghatti Tulip

Welcome to Binghatti Tulip, a testament to cutting-edge architectural ingenuity and design excellence. At Binghatti Tulip, every element tells a story of innovation, creativity, and sustainability. Each detail has been carefully curated to offer outdoor spaces that respect your privacy.

Binghatti Tulip is not just a home; it's an investment in a prime location that promises enduring value. Discover the future of living.







# Project Facts

## PROPERTY TYPE

RESIDENTIAL & RETAIL

## PLOT AREA

2255.63 SQ. M./ 24279.60 SQFT

## PLOT NUMBER

JVC10WHRA003

## DESCRIPTION

UG + G + 5P + 30 FLOORS  
+ ROOF FLOOR

## NUMBER OF UNITS

STUDIO - 58

1 BEDROOM - 160

2 BEDROOM - 46

3 BEDROOM - 12

## TOTAL UNITS

RESIDENTIAL - 276

SHOP - 3



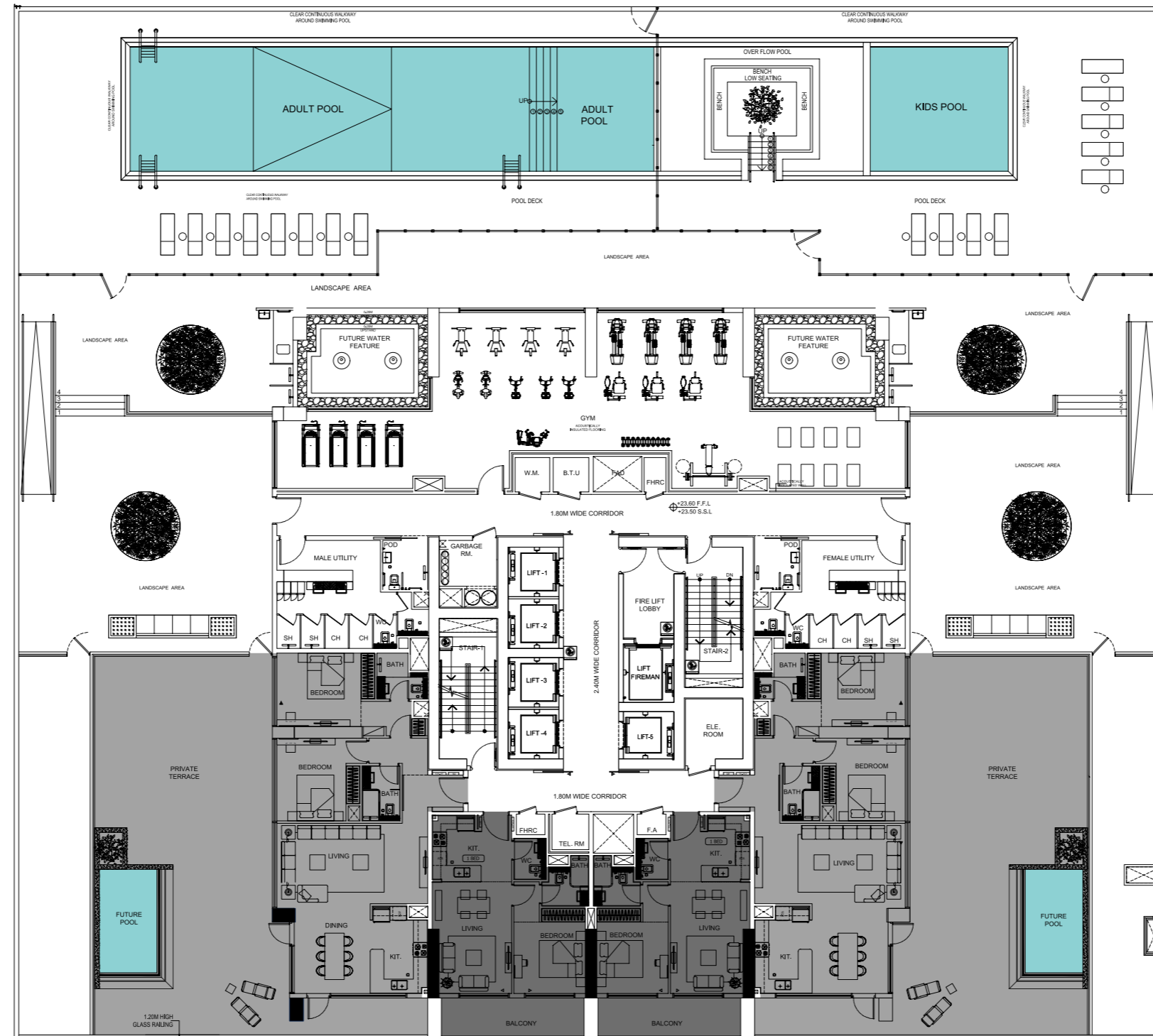


# 05.

Floor  
Plans

# Typical Floor Plan

# 1st Floor



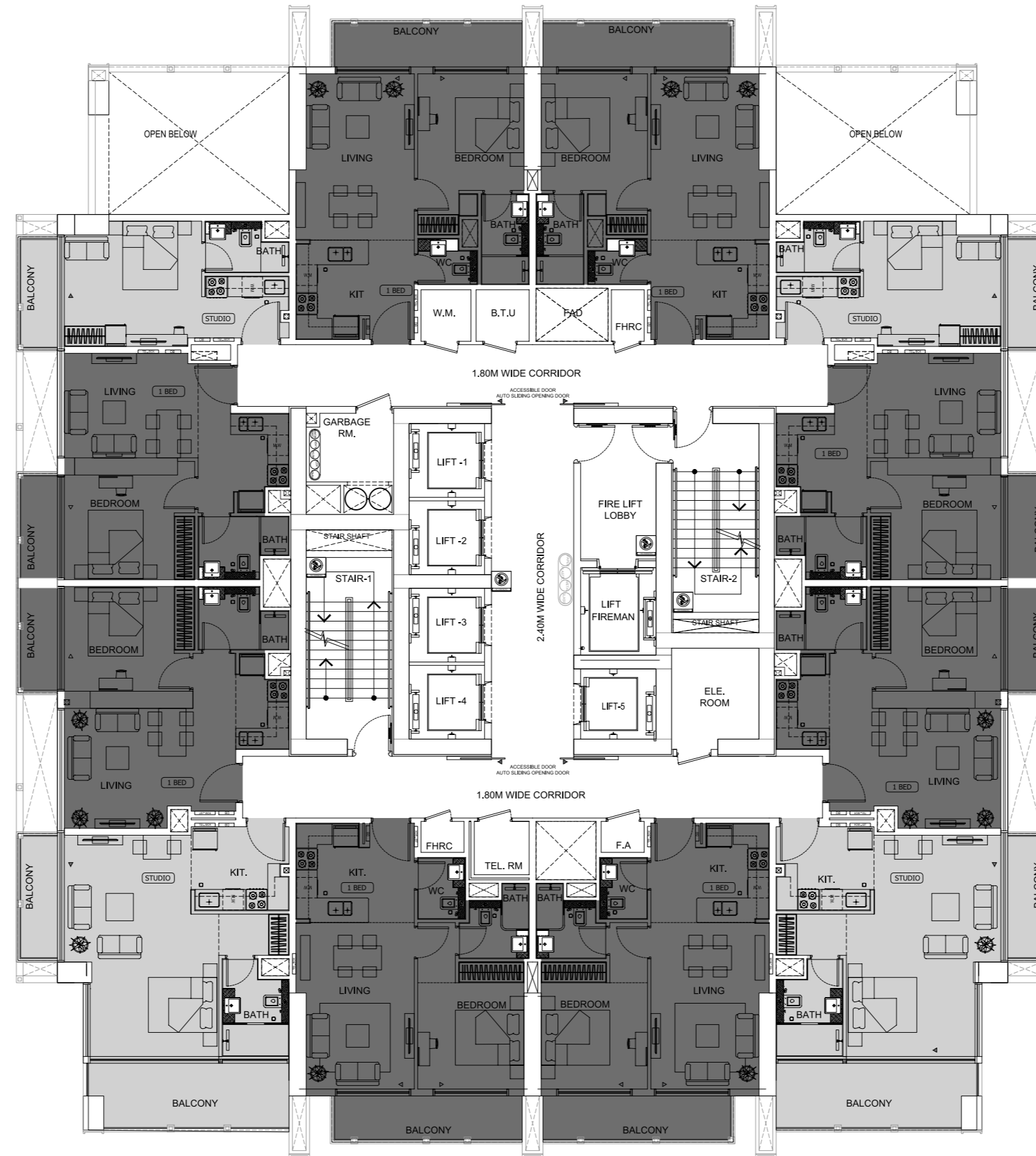
1 BEDROOM



2 BEDROOM

# Typical Floor Plan

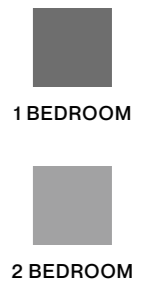
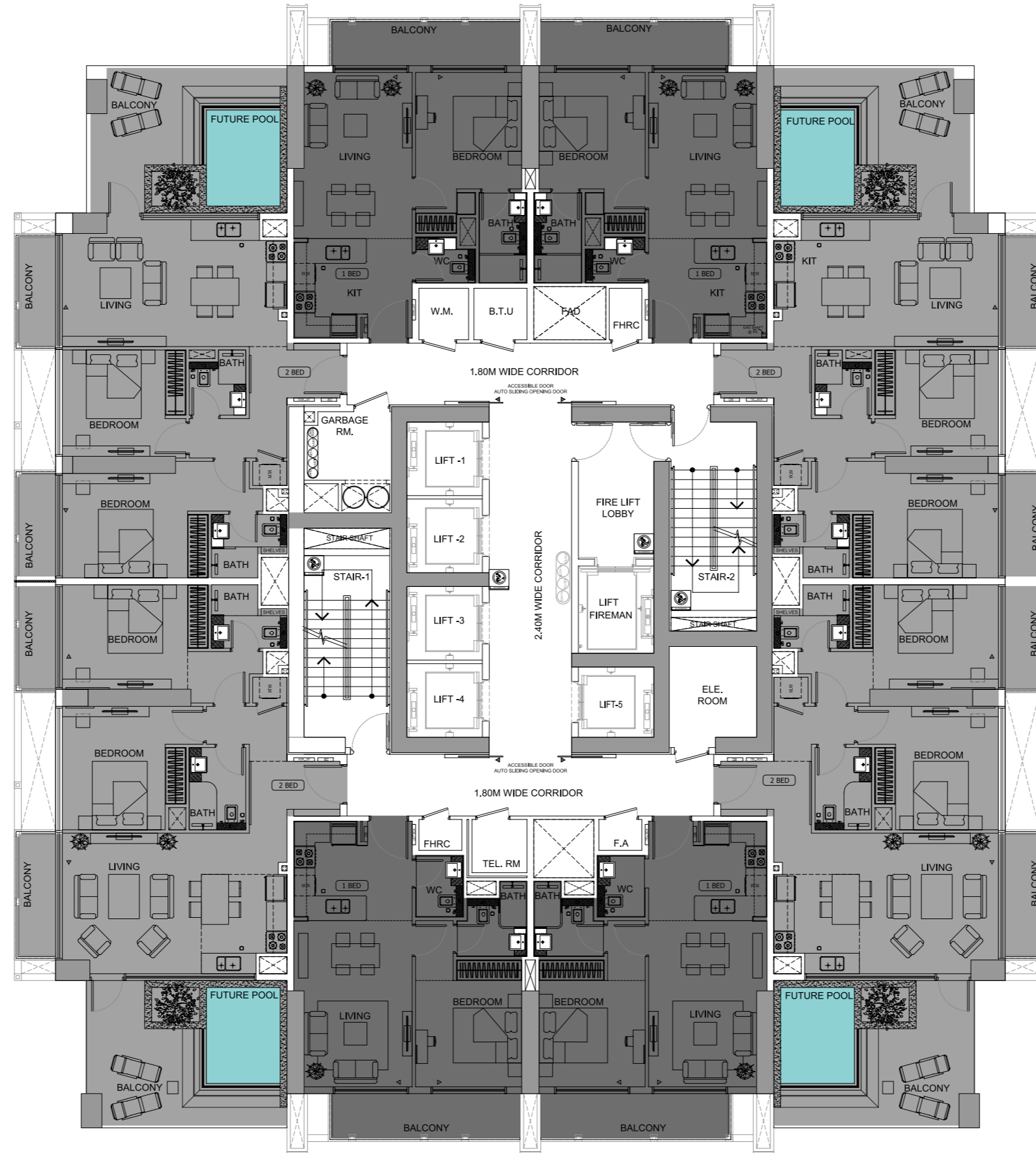
# 2<sup>nd</sup> Floor





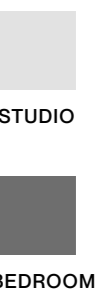
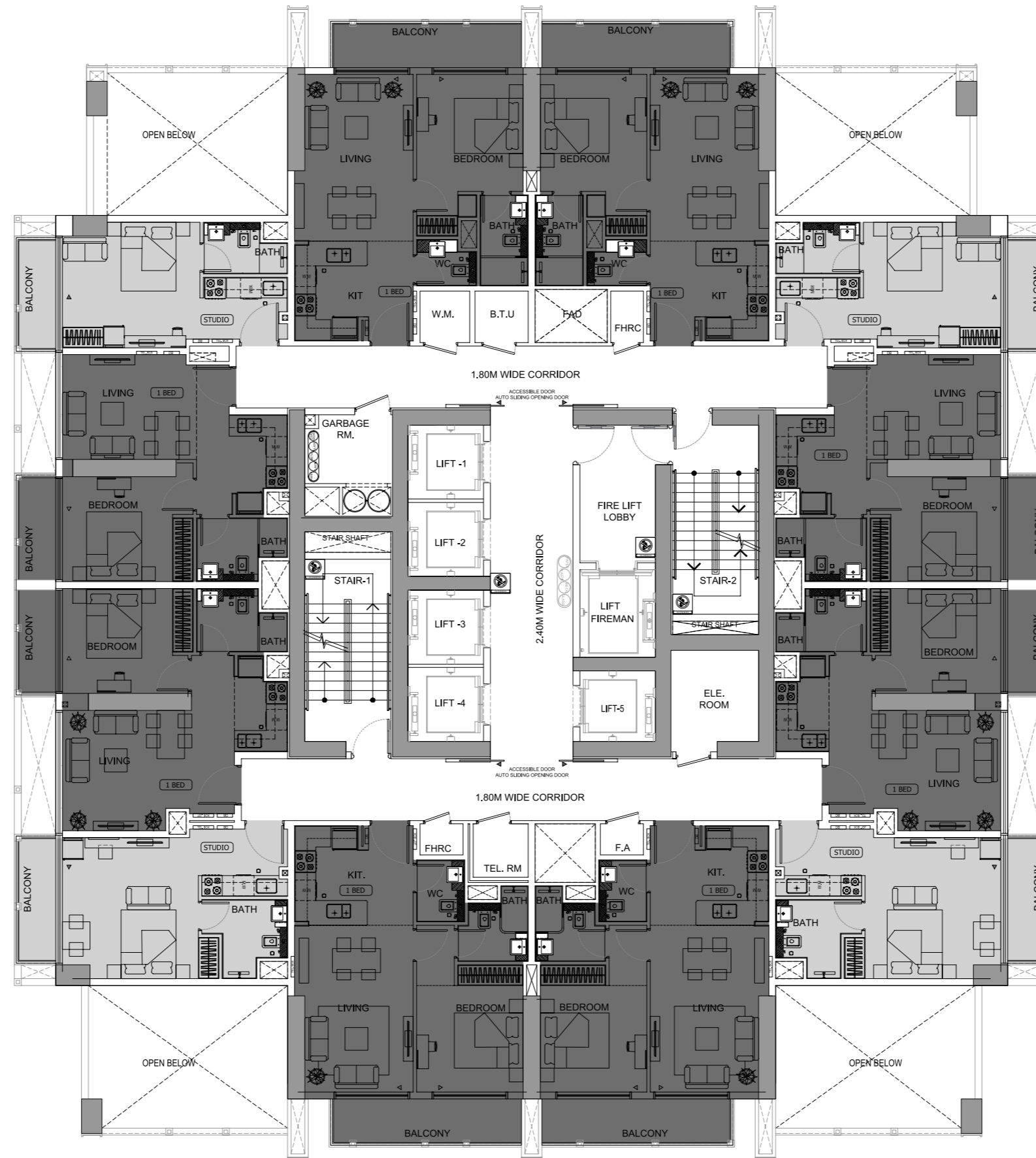
# Typical Floor Plan

3<sup>rd</sup> - 17<sup>th</sup> Floor



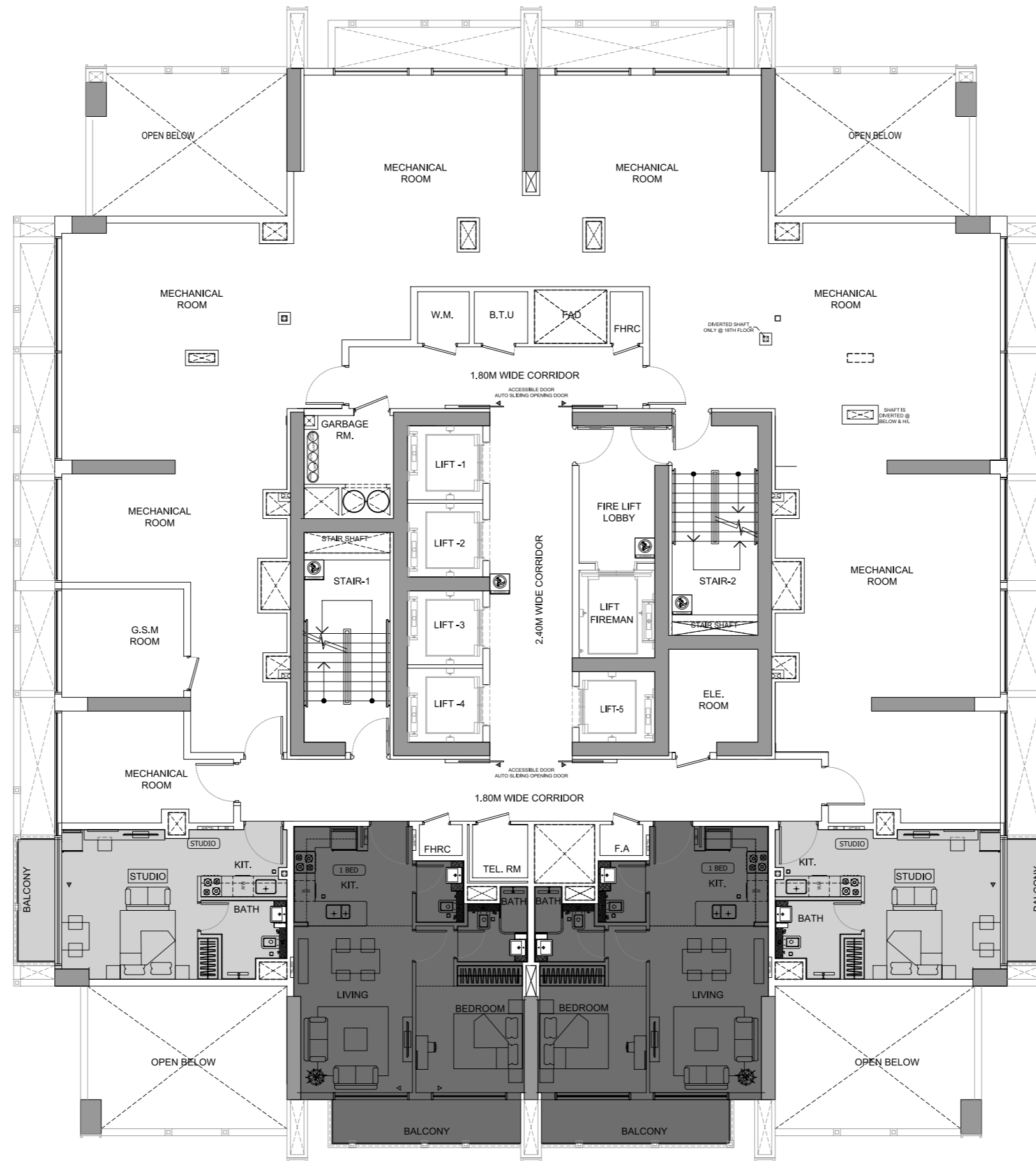
# Typical Floor Plan

4<sup>th</sup> - 30<sup>th</sup> Floor



# Typical Floor Plan

# 18<sup>th</sup> Floor



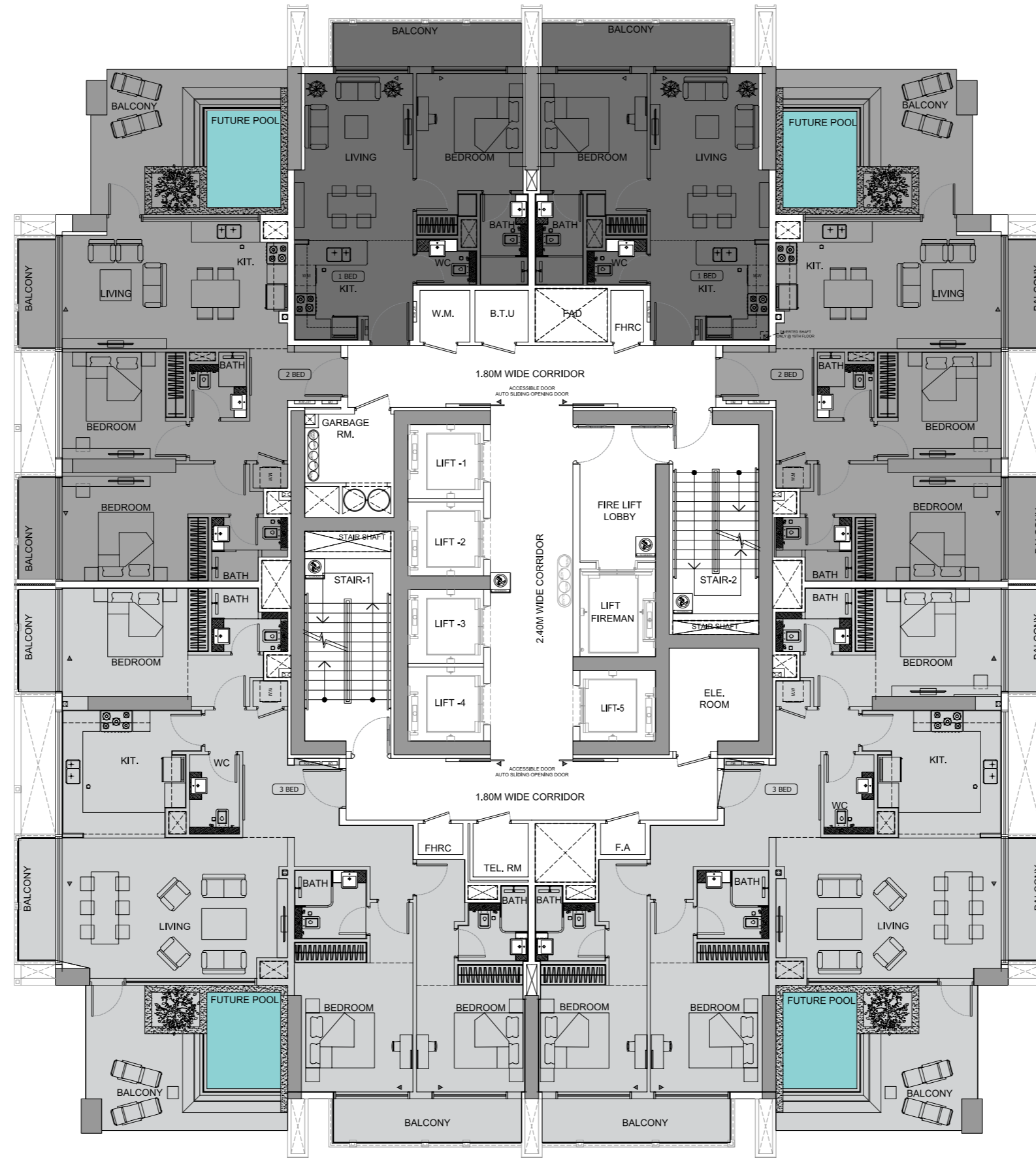
STUDIO



1 BEDROOM

# Typical Floor Plan

19<sup>th</sup> - 29<sup>th</sup> Floor

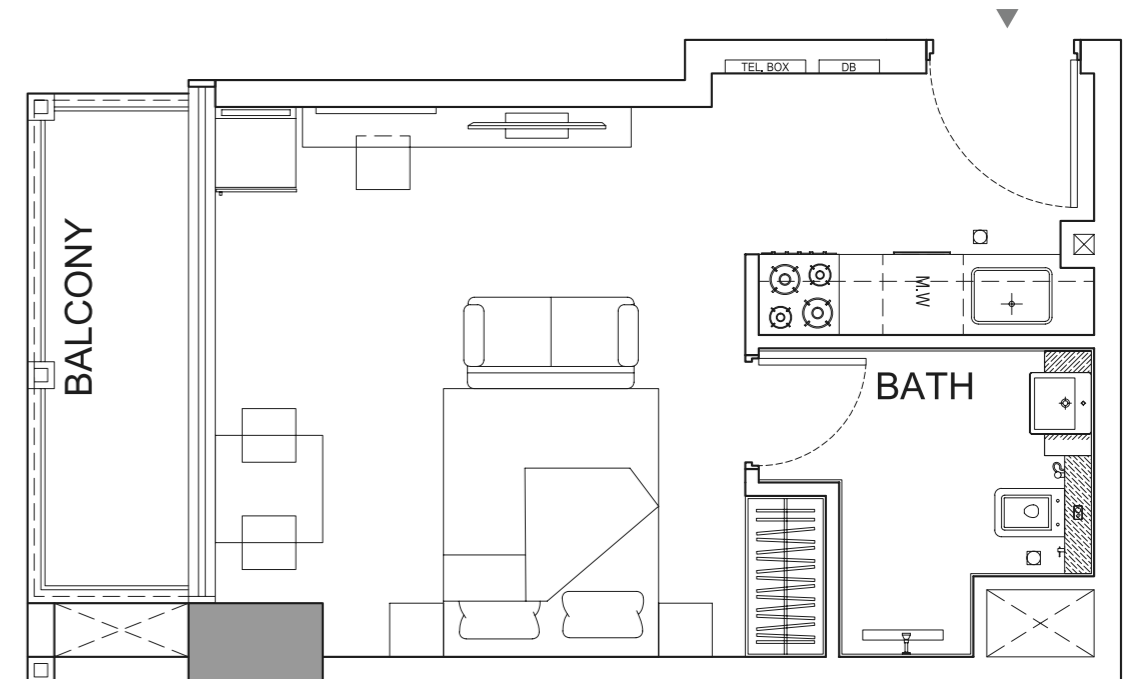
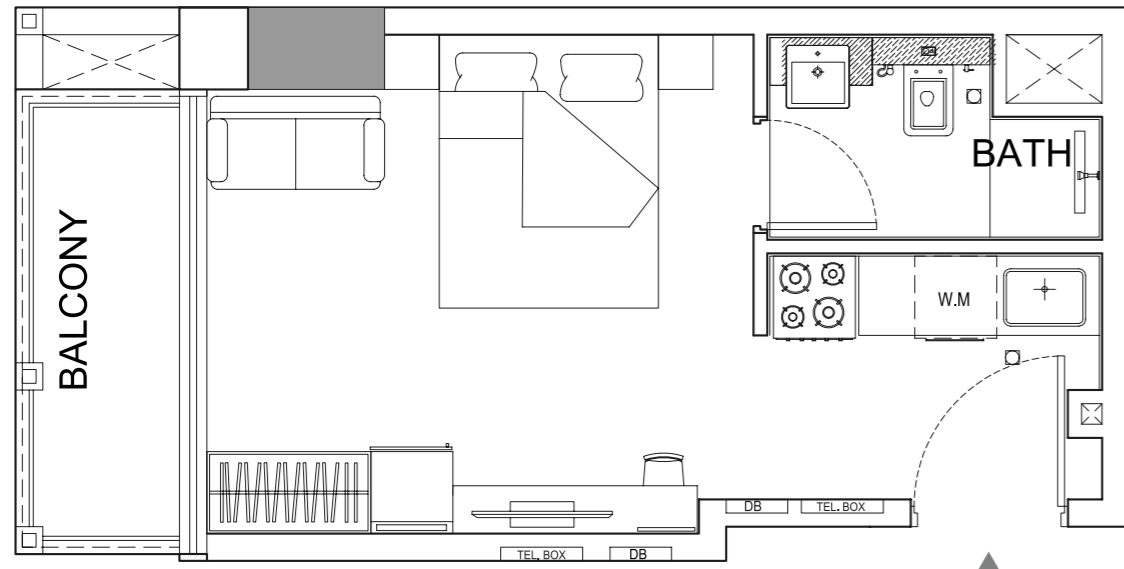


- 1 BEDROOM
- 2 BEDROOM
- 3 BEDROOM

# Studio

A

B

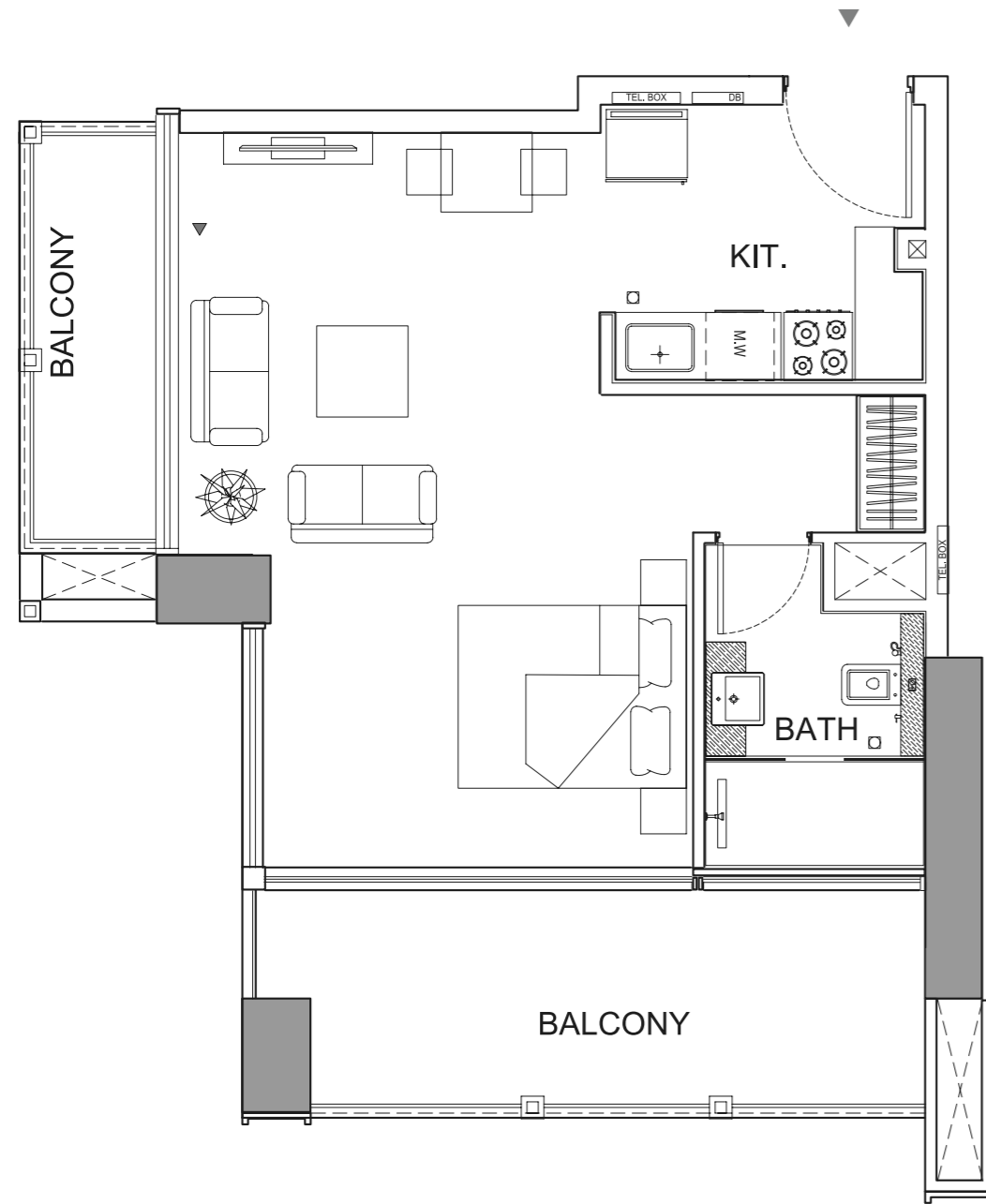


Disclaimer: 1. All room dimensions are measured to structural elements and exclude wall finishes and construction tolerances. 2. All dimensions have been provided by our consultant architects. 3. All materials, dimensions and drawings are approximate. Information is subject to change without notice. 4. Actual suite area may vary from the stated area. Drawings not to scale. The developer reserves the right to make revisions. 5. Calculation of suite area is measured as the area bounded by the centre line of demising or partition walls separating one unit from another unit, the exterior face of all exterior walls, and the exterior face of the corridor wall enclosing the adjoining unit. 6. Calculation of balcony area is measured as the area bounded by the centre line of demising or partition walls separating one unit from another unit, the outmost face of the enclosing guard and the external face of the adjoining balcony. 7. The units are measured at typical floor in the building. Columns may vary in size depending on the floor level. 8. For each unit type, unit sizes and details might be slightly different. Please refer to the sales and purchase agreement for the actual size of each specific unit.

تنويه: ١. إن أبعاد الغرف يتم قياسها طبقاً للعناصر الهيكلية مع استبعاد تشطيبات الجدران ودرجة تحمل البناء. ٢. جميع القياسات تم تزويدها من قبل المهندسين المعماريين الاستشاريين لدينا. ٣. جميع المواد والأبعاد والرسومات تقريبية. تخضع المعلومات للتغيير دون إشعار مسبق. ٤. قد تختلف منطقة الجناح الفعلي عن المساحة المذكورة. الرسومات لا يتم توسيع نطاقها. يحتفظ المطور بالحق في إجراء التغييرات. ٥. يتم قياس حساب منطقة الجناح كمنطقة يحدها الخط المركزي للجدران الفاصلة أو الفاصلة التي تفصل وحدة عن وحدة أخرى، والوجه الخارجي لجميع الجدران الخارجية، والوجه الخارجي لجدار الممر المحيط بالوحدة المجاورة. ٦. ويقاس حساب منطقة الشرفة على أنها المنطقة التي يحدها الخط المركزي للجدران الفاصلة أو الفاصلة التي تفصل وحدة عن وحدة أخرى، والوجه الأبعد للحراس المرفق والوجه الخارجي للشرفة المجاورة. ٧. يتم قياس الوحدات في الطابق النموذجي في المبنى. قد تختلف الأعمدة في الحجم حسب مستوى الطابق. ٨. قد تكون أحجام الوحدات والتفاصيل المتعلقة بها مختلفة وذلك حسب نوع الوحدة. يرجى الرجوع إلى اتفاقية البيع والشراء لمعرفة الحجم الفعلي لكل وحدة.

# I Studio

©

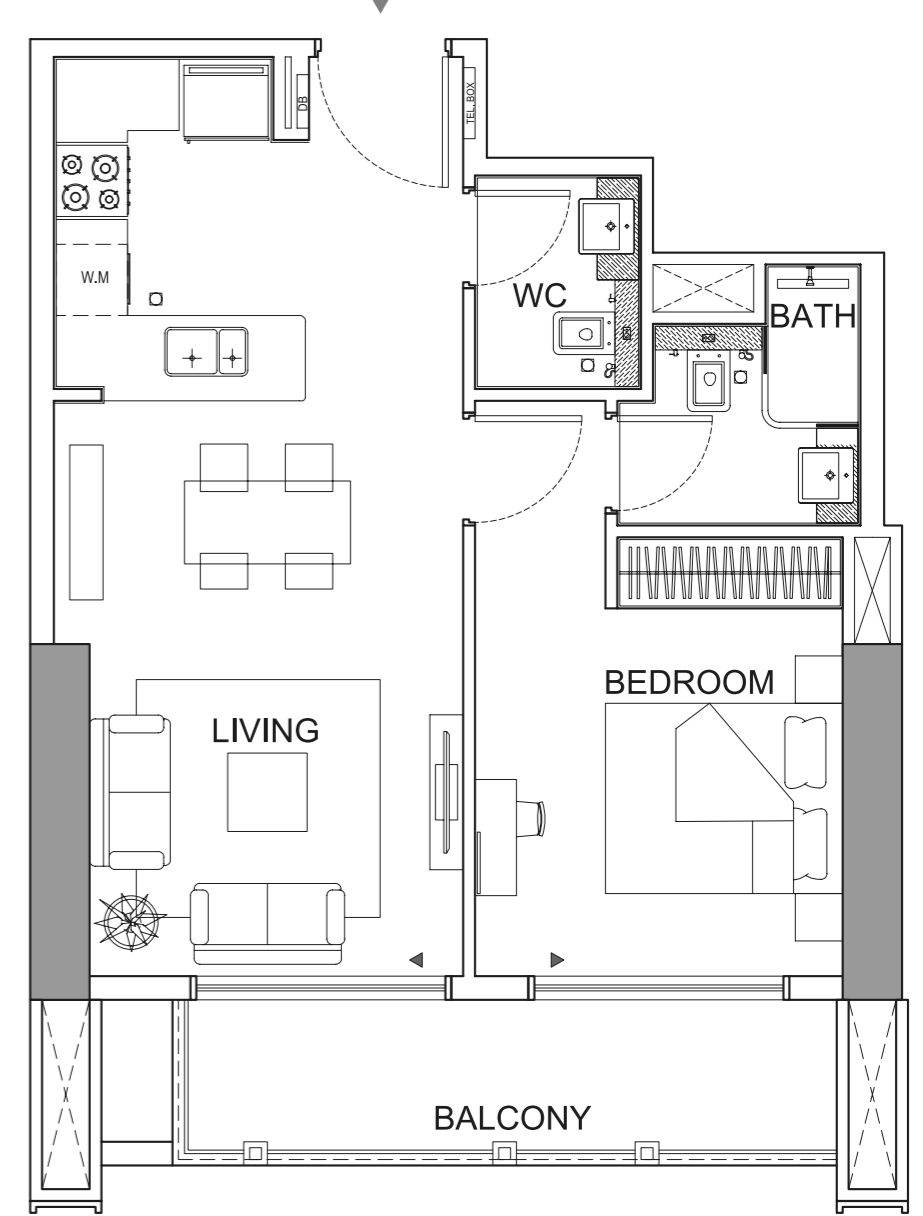
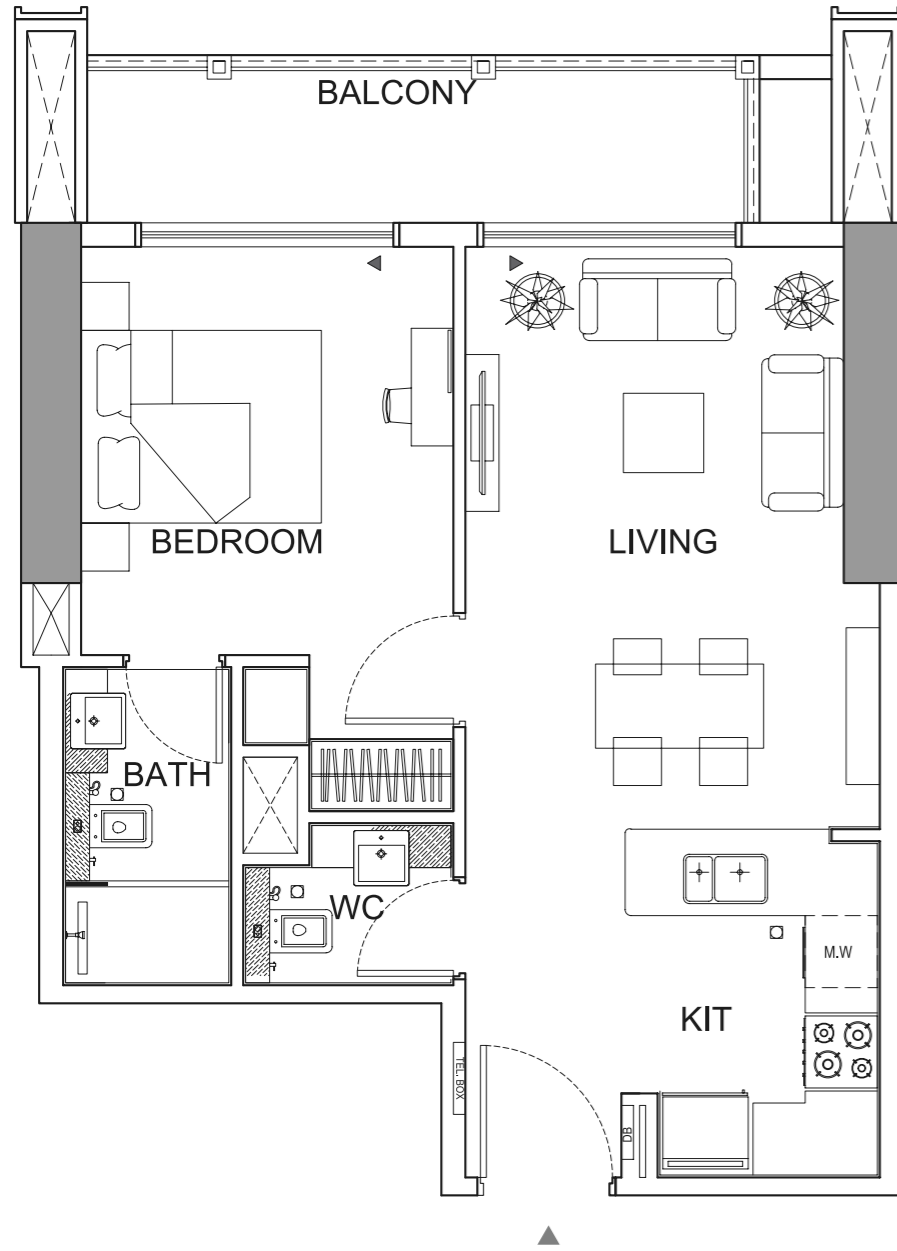


Disclaimer: 1. All room dimensions are measured to structural elements and exclude wall finishes and construction tolerances. 2. All dimensions have been provided by our consultant architects. 3. All materials, dimensions and drawings are approximate. Information is subject to change without notice. 4. Actual suite area may vary from the stated area. Drawings not to scale. The developer reserves the right to make revisions. 5. Calculation of suite area is measured as the area bounded by the centre line of demising or partition walls separating one unit from another unit, the exterior face of all exterior walls, and the exterior face of the corridor wall enclosing the adjoining unit. 6. Calculation of balcony area is measured as the area bounded by the centre line of demising or partition walls separating one unit from another unit, the outmost face of the enclosing guard and the external face of the adjoining balcony. 7. The units are measured at typical floor in the building. Columns may vary in size depending on the floor level. 8. For each unit type, unit sizes and details might be slightly different. Please refer to the sales and purchase agreement for the actual size of each specific unit.

# 1 Bedroom

A

B

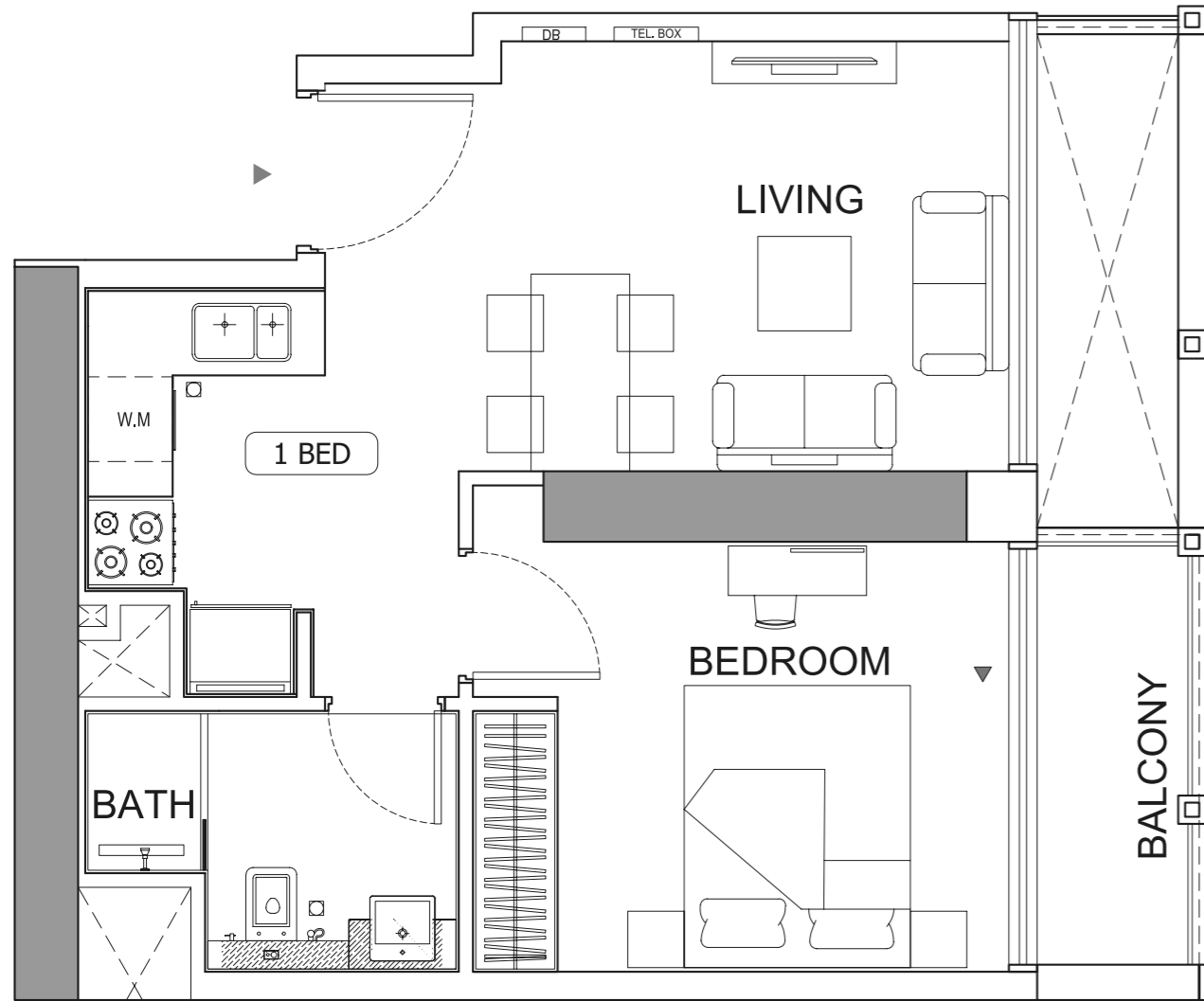


Disclaimer: 1. All room dimensions are measured to structural elements and exclude wall finishes and construction tolerances. 2. All dimensions have been provided by our consultant architects. 3. All materials, dimensions and drawings are approximate. Information is subject to change without notice. 4. Actual suite area may vary from the stated area. Drawings not to scale. The developer reserves the right to make revisions. 5. Calculation of suite area is measured as the area bounded by the centre line of demising or partition walls separating one unit from another unit, the exterior face of all exterior walls, and the exterior face of the corridor wall enclosing the adjoining unit. 6. Calculation of balcony area is measured as the area bounded by the centre line of demising or partition walls separating one unit from another unit, the outmost face of the enclosing guard and the external face of the adjoining balcony. 7. The units are measured at typical floor in the building. Columns may vary in size depending on the floor level. 8. For each unit type, unit sizes and details might be slightly different. Please refer to the sales and purchase agreement for the actual size of each specific unit.

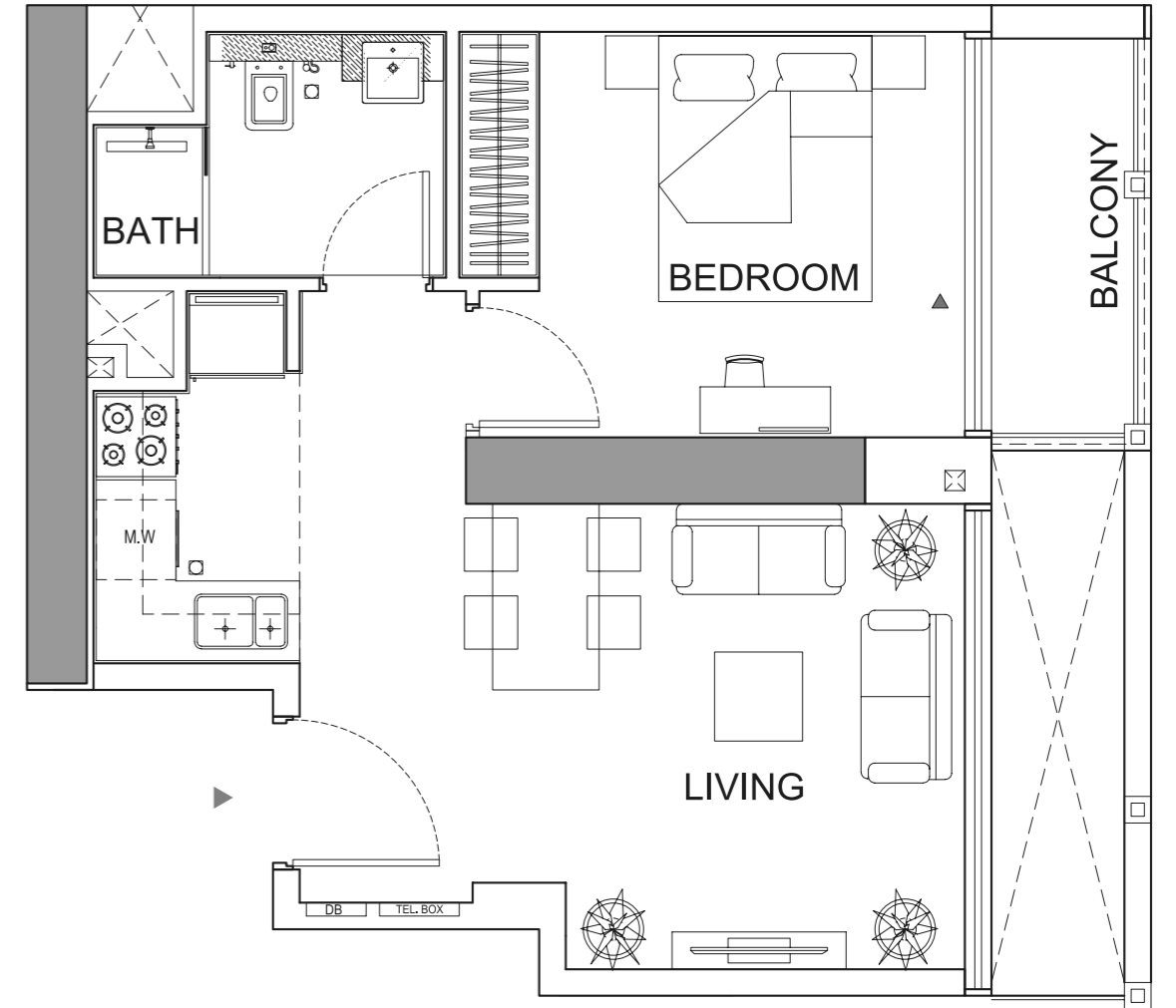
تنويه: ١. إن أبعاد الغرف يتم قياسها طبقاً للعناصر الهيكلية مع استبعاد تشطيبات الجدران ودرجة تحمل البناء. ٢. جميع القياسات تم تزويدها من قبل المهندسين المعماريين الاستشاريين لدينا. ٣. جميع المواد والأبعاد والرسومات تقريبية. تخضع المعلومات للتغيير دون إشعار مسبق. ٤. قد تختلف منطقة الجناح الفعلي عن المساحة المذكورة. الرسومات لا يتم توسيع نطاقها. يحتفظ المطور بالحق في إجراء التغييرات. ٥. يتم قياس حساب منطقة الجناح كمنطقة يحدها الخط المركزي للجدران الفاصلة أو الفاصلة التي تفصل وحدة عن وحدة أخرى، والوجه الخارجي لجميع الجدران الخارجية، والوجه الخارجي لجدار الممر المحيط بالوحدة المجاورة. ٦. ويقاس حساب منطقة الشرفة على أنها المنطقة التي يحدها الخط المركزي للجدران الفاصلة أو الفاصلة التي تفصل وحدة عن وحدة أخرى، والوجه الأبعد للحارس المرفق والوجه الخارجي للشرفة المجاورة. ٧. يتم قياس الوحدات في الطابق النموذجي في المبنى. قد تختلف الأعمدة في الحجم حسب مستوى الطابق. ٨. قد تكون أحجام الوحدات والتفاصيل المتعلقة بها مختلفة وذلك حسب نوع الوحدة. يرجى الرجوع إلى اتفاقية البيع والشراء لمعرفة الحجم الفعلي لكل وحدة.

# 1 Bedroom

Ⓒ



Ⓓ



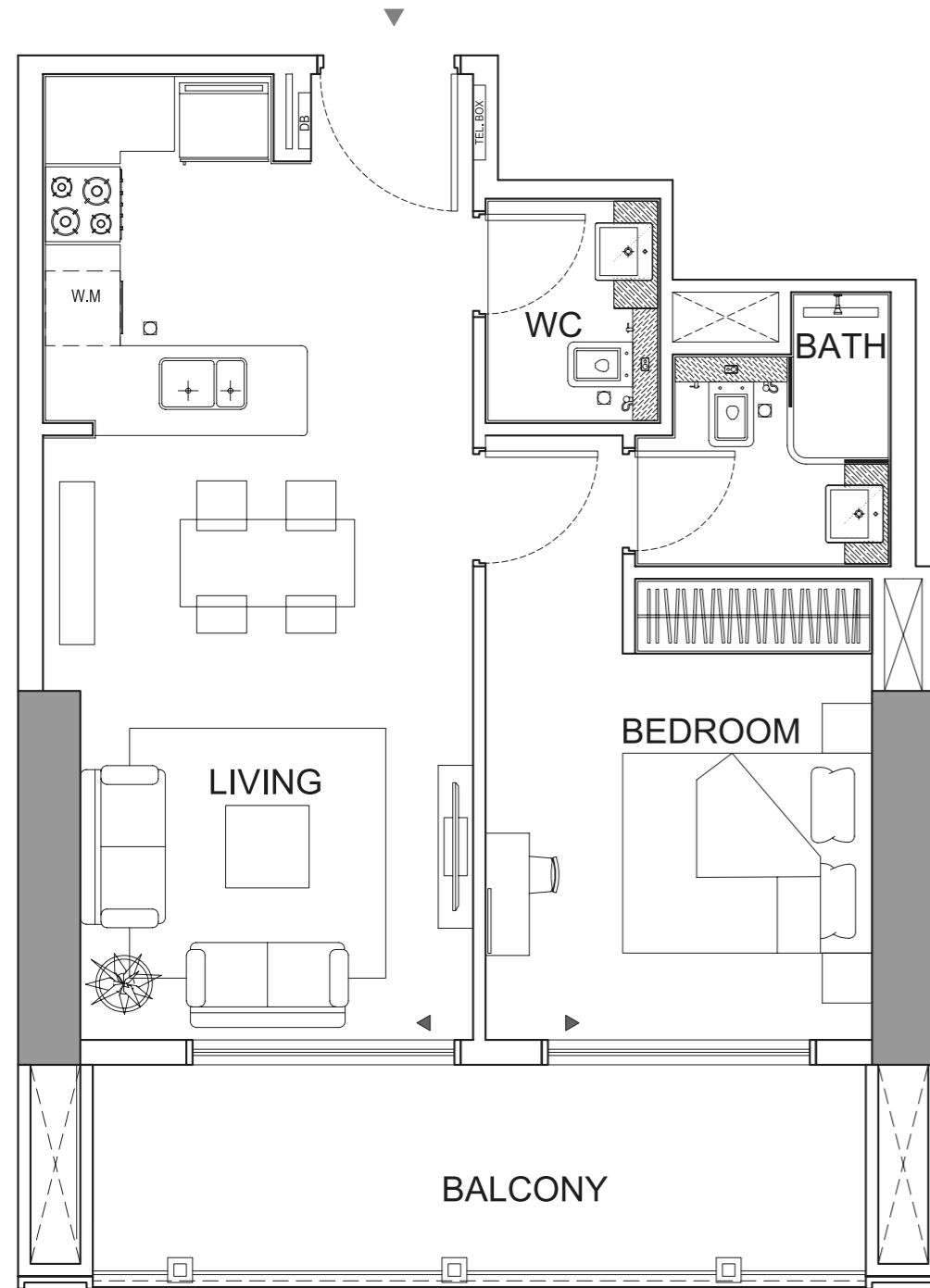
Disclaimer: 1. All room dimensions are measured to structural elements and exclude wall finishes and construction tolerances. 2. All dimensions have been provided by our consultant architects. 3. All materials, dimensions and drawings are approximate. Information is subject to change without notice. 4. Actual suite area may vary from the stated area. Drawings not to scale. The developer reserves the right to make revisions. 5. Calculation of suite area is measured as the area bounded by the centre line of demising or partition walls separating one unit from another unit, the exterior face of all exterior walls, and the exterior face of the corridor wall enclosing the adjoining unit. 6. Calculation of balcony area is measured as the area bounded by the centre line of demising or partition walls separating one unit from another unit, the outmost face of the enclosing guard and the external face of the adjoining balcony. 7. The units are measured at typical floor in the building. Columns may vary in size depending on the floor level. 8. For each unit type, unit sizes and details might be slightly different. Please refer to the sales and purchase agreement for the actual size of each specific unit.

تنويه: ١. إن أبعاد الغرف يتم قياسها طبقاً للعناصر الهيكلية مع استبعاد تشطيبات الجدران ودرجة تحمل البناء. ٢. جميع القياسات تم تزويدها من قبل المهندسين المعماريين الاستشاريين لدينا. ٣. جميع المواد والأبعاد والرسومات تقريبية. تخضع المعلومات للتغيير دون إشعار مسبق. ٤. قد تختلف منطقة الجناح الفعلي عن المساحة المذكورة. الرسومات لا يتم توسيع نطاقها. يحتفظ المطور بالحق في إجراء التغييرات. ٥. يتم قياس حساب منطقة الجناح كمنطقة يحدها الخط المركزي للجدران الفاصلة أو الفاصلة التي تفصل وحدة عن وحدة أخرى، والوجه الخارجي لجميع الجدران الخارجية، والوجه الخارجي لجدار الممر المحيط بالوحدة المجاورة. ٦. ويقاس حساب منطقة الشرفة على أنها المنطقة التي يحدها الخط المركزي للجدران الفاصلة أو الفاصلة التي تفصل وحدة عن وحدة أخرى، والوجه الأبعد للحارس المرفق والوجه الخارجي للشرفة المجاورة. ٧. يتم قياس الوحدات في الطابق النموذجي في المبنى. قد تختلف الأعمدة في الحجم حسب مستوى الطابق. ٨. قد تكون أحجام الوحدات والتفاصيل المتعلقة بها مختلفة وذلك حسب نوع الوحدة. يرجى الرجوع إلى اتفاقية البيع والشراء لمعرفة الحجم الفعلي لكل وحدة.



# 1 Bedroom

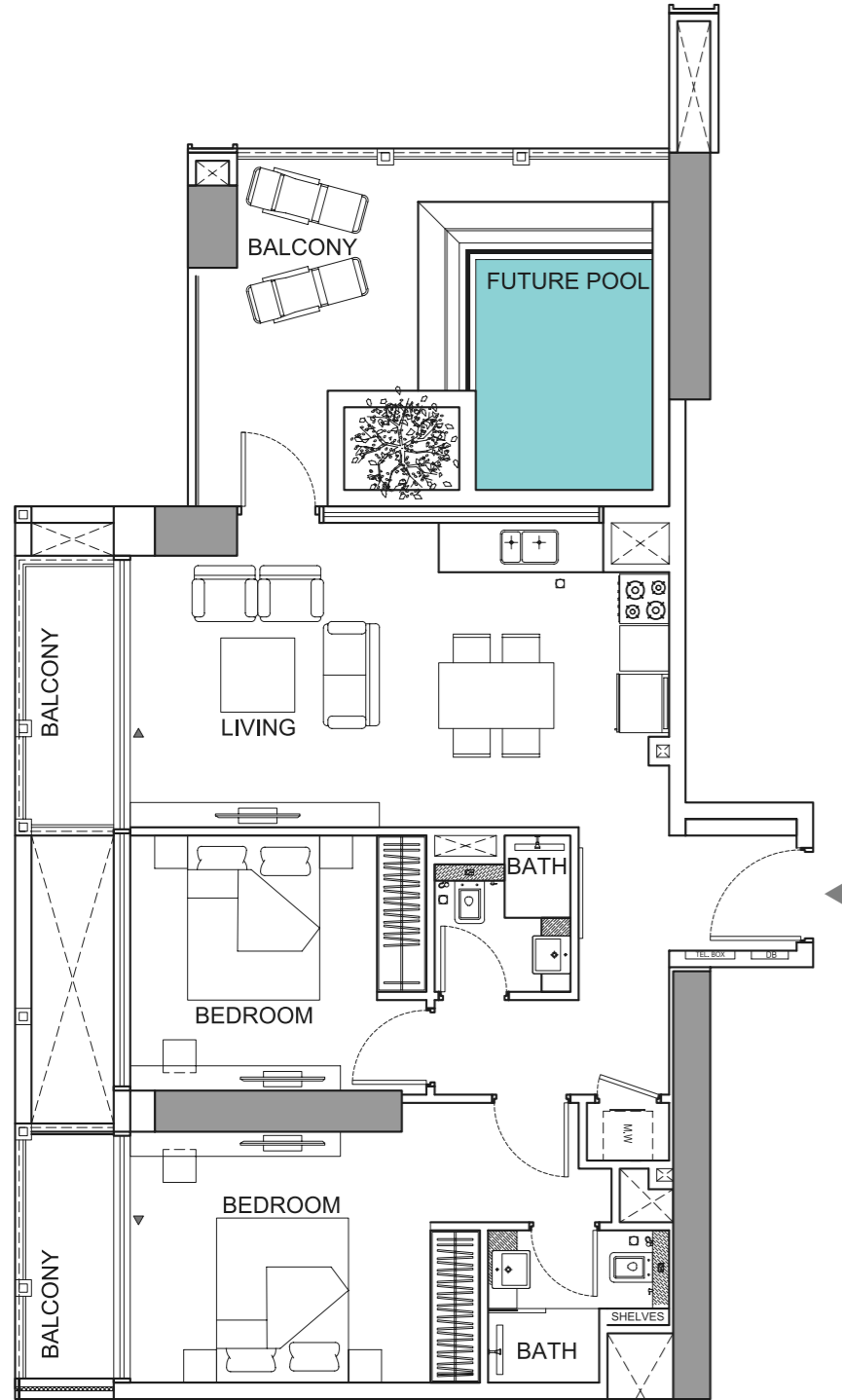
E



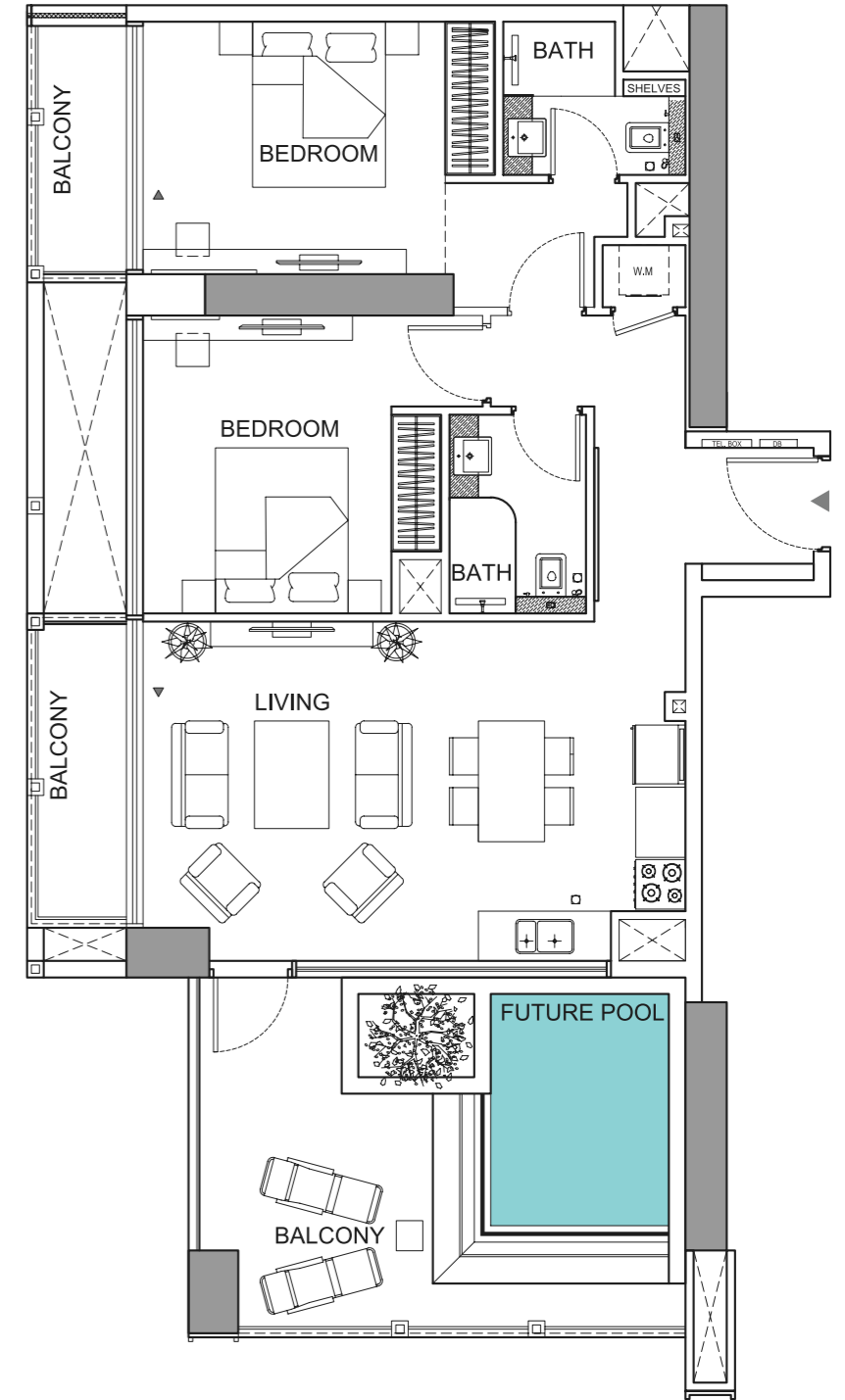
Disclaimer: 1. All room dimensions are measured to structural elements and exclude wall finishes and construction tolerances. 2. All dimensions have been provided by our consultant architects. 3. All materials, dimensions and drawings are approximate. Information is subject to change without notice. 4. Actual suite area may vary from the stated area. Drawings not to scale. The developer reserves the right to make revisions. 5. Calculation of suite area is measured as the area bounded by the centre line of demising or partition walls separating one unit from another unit, the exterior face of all exterior walls, and the exterior face of the corridor wall enclosing the adjoining unit. 6. Calculation of balcony area is measured as the area bounded by the centre line of demising or partition walls separating one unit from another unit, the outmost face of the enclosing guard and the external face of the adjoining balcony. 7. The units are measured at typical floor in the building. Columns may vary in size depending on the floor level. 8. For each unit type, unit sizes and details might be slightly different. Please refer to the sales and purchase agreement for the actual size of each specific unit.

# 2 Bedroom

A



B

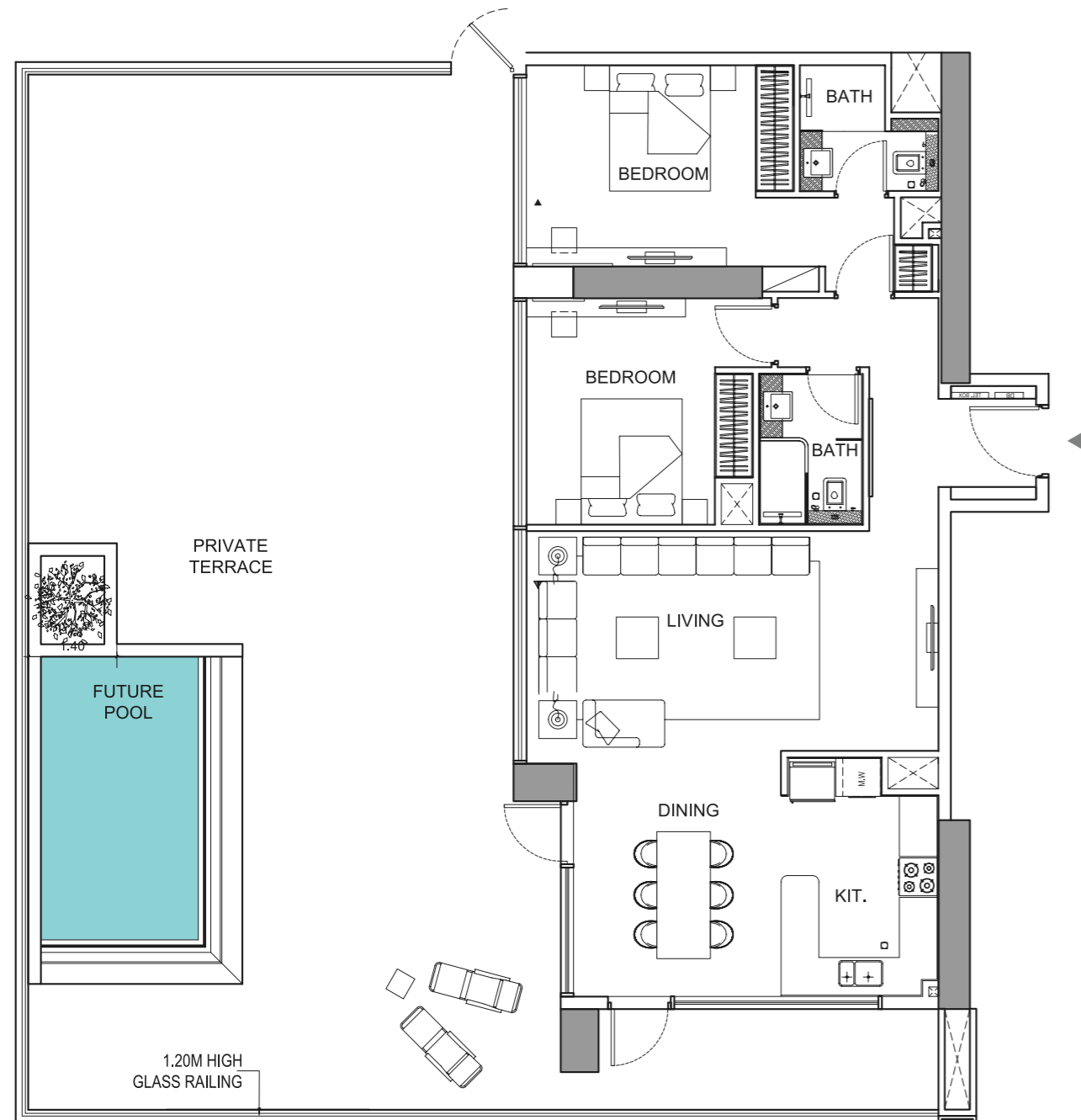


Disclaimer: 1. All room dimensions are measured to structural elements and exclude wall finishes and construction tolerances. 2. All dimensions have been provided by our consultant architects. 3. All materials, dimensions and drawings are approximate. Information is subject to change without notice. 4. Actual suite area may vary from the stated area. Drawings not to scale. The developer reserves the right to make revisions. 5. Calculation of suite area is measured as the area bounded by the centre line of demising or partition walls separating one unit from another unit, the exterior face of all exterior walls, and the exterior face of the corridor wall enclosing the adjoining unit. 6. Calculation of balcony area is measured as the area bounded by the centre line of demising or partition walls separating one unit from another unit, the outmost face of the enclosing guard and the external face of the adjoining balcony. 7. The units are measured at typical floor in the building. Columns may vary in size depending on the floor level. 8. For each unit type, unit sizes and details might be slightly different. Please refer to the sales and purchase agreement for the actual size of each specific unit.

تنويه: ١. إن أبعاد الغرف يتم قياسها طبقاً للعناصر الهيكلية مع استبعاد تشطيبات الجدران ودرجة تحمل البناء. ٢. جميع القياسات تم تزويدها من قبل المهندسين المعماريين الاستشاريين لدينا. ٣. جميع المواد والأبعاد والرسومات تقريبية. تخضع المعلومات للتغيير دون إشعار مسبق. ٤. قد تختلف منطقة الجناح الفعلي عن المساحة المذكورة. الرسومات لا يتم توسيع نطاقها. يحتفظ المطور بالحق في إجراء التغييرات. ٥. يتم قياس حساب منطقة الجناح كمنطقة يحدها الخط المركزي للجدران الفاصلة أو الفاصلة التي تفصل وحدة عن وحدة أخرى، والوجه الخارجي لجميع الجدران الخارجية، والوجه الخارجي لجدار الممر المحيط بالوحدة المجاورة. ٦. ويقاس حساب منطقة الشرفة على أنها المنطقة التي يحدها الخط المركزي للجدران الفاصلة أو الفاصلة التي تفصل وحدة عن وحدة أخرى، والوجه الأبعد للحارس المرفق والوجه الخارجي للشرفة المجاورة. ٧. يتم قياس الوحدات في الطابق النموذجي في المبنى. قد تختلف الأعمدة في الحجم حسب مستوى الطابق. ٨. قد تكون أحجام الوحدات والتفاصيل المتعلقة بها مختلفة وذلك حسب نوع الوحدة. يرجى الرجوع إلى اتفاقية البيع والشراء لمعرفة الحجم الفعلي لكل وحدة.

# 2 Bedroom

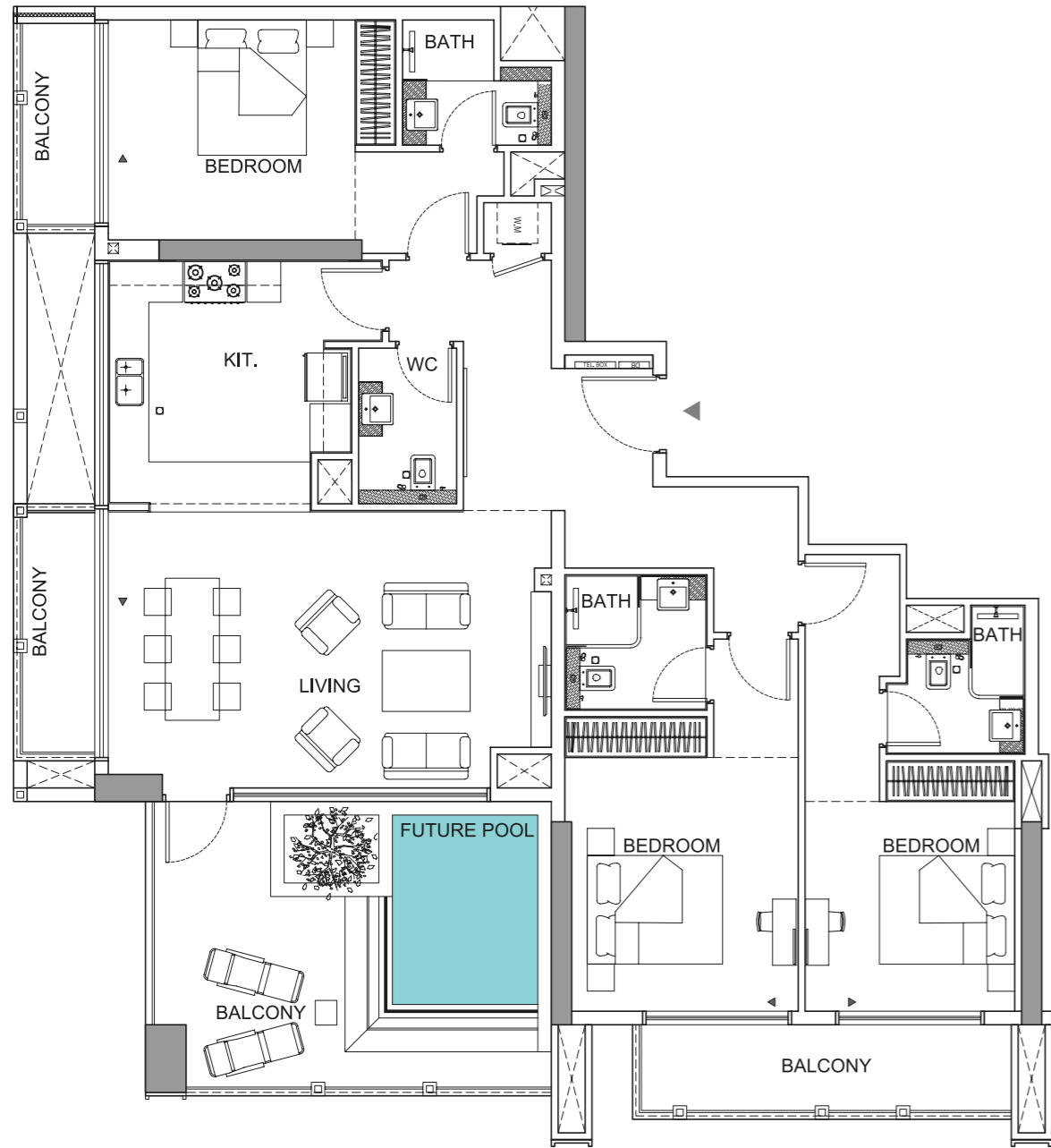
©



Disclaimer: 1. All room dimensions are measured to structural elements and exclude wall finishes and construction tolerances. 2. All dimensions have been provided by our consultant architects. 3. All materials, dimensions and drawings are approximate. Information is subject to change without notice. 4. Actual suite area may vary from the stated area. Drawings not to scale. The developer reserves the right to make revisions. 5. Calculation of suite area is measured as the area bounded by the centre line of demising or partition walls separating one unit from another unit, the exterior face of all exterior walls, and the exterior face of the corridor wall enclosing the adjoining unit. 6. Calculation of balcony area is measured as the area bounded by the centre line of demising or partition walls separating one unit from another unit, the outmost face of the enclosing guard and the external face of the adjoining balcony. 7. The units are measured at typical floor in the building. Columns may vary in size depending on the floor level. 8. For each unit type, unit sizes and details might be slightly different. Please refer to the sales and purchase agreement for the actual size of each specific unit.

# 3 Bedroom

A



Disclaimer: 1. All room dimensions are measured to structural elements and exclude wall finishes and construction tolerances. 2. All dimensions have been provided by our consultant architects. 3. All materials, dimensions and drawings are approximate. Information is subject to change without notice. 4. Actual suite area may vary from the stated area. Drawings not to scale. The developer reserves the right to make revisions. 5. Calculation of suite area is measured as the area bounded by the centre line of demising or partition walls separating one unit from another unit, the exterior face of all exterior walls, and the exterior face of the corridor wall enclosing the adjoining unit. 6. Calculation of balcony area is measured as the area bounded by the centre line of demising or partition walls separating one unit from another unit, the outmost face of the enclosing guard and the external face of the adjoining balcony. 7. The units are measured at typical floor in the building. Columns may vary in size depending on the floor level. 8. For each unit type, unit sizes and details might be slightly different. Please refer to the sales and purchase agreement for the actual size of each specific unit.



# 06.

Project  
Details



# Planned for Practicality

A variety of apartment types assure comfortable living spaces for every resident. Each apartment's distinctive design is implemented without compromising practicality. The interiors were meticulously planned to maximize convenience without compromising elegance.



# Spacious & Splendid

The two bedroom apartments in Binghatti Tulip are an abode of repose. The plush interiors offer a perfect balance of pragmatic design and modern form. Replete with modern fixtures and furnishings, these apartments are an ideal choice for families.









# Impeccable Detail

---

The lavish materials and uncompromised finishing throughout the building depict supreme quality and craftsmanship from only the most distinguished of international suppliers. All the fittings and fixtures within the apartments are hand-picked to perfectly compliment the interior design. The sliding glass doors and windows create a perfect balance between interior and exterior spaces while maintaining the highest level of environmental control and functionality.