

VELA
VIENTO

)(*Dorchester Collection*

DUBAI

OMNIYAT

Soon,
a timeless vision
will ascend *in Marasi Bay...*

Embodying the Latin meaning for 'sail' and 'wind',
VELA VIENTO represents the spirited dance of the wind;
the invisible force that breathes life into sails and carries us ever forward.



A realm
above
the ordinary

With a bold vision for Marasi Bay,
OMNIYAT introduces VELA VIENTO,
ascending to celestial heights of magnificence
in Burj Khalifa District.

VELA VIENTO builds on the uplifting legacy
of its sister property, VELA, in a powerfully
transformative setting of waterfront living
that shines with boundless possibilities.



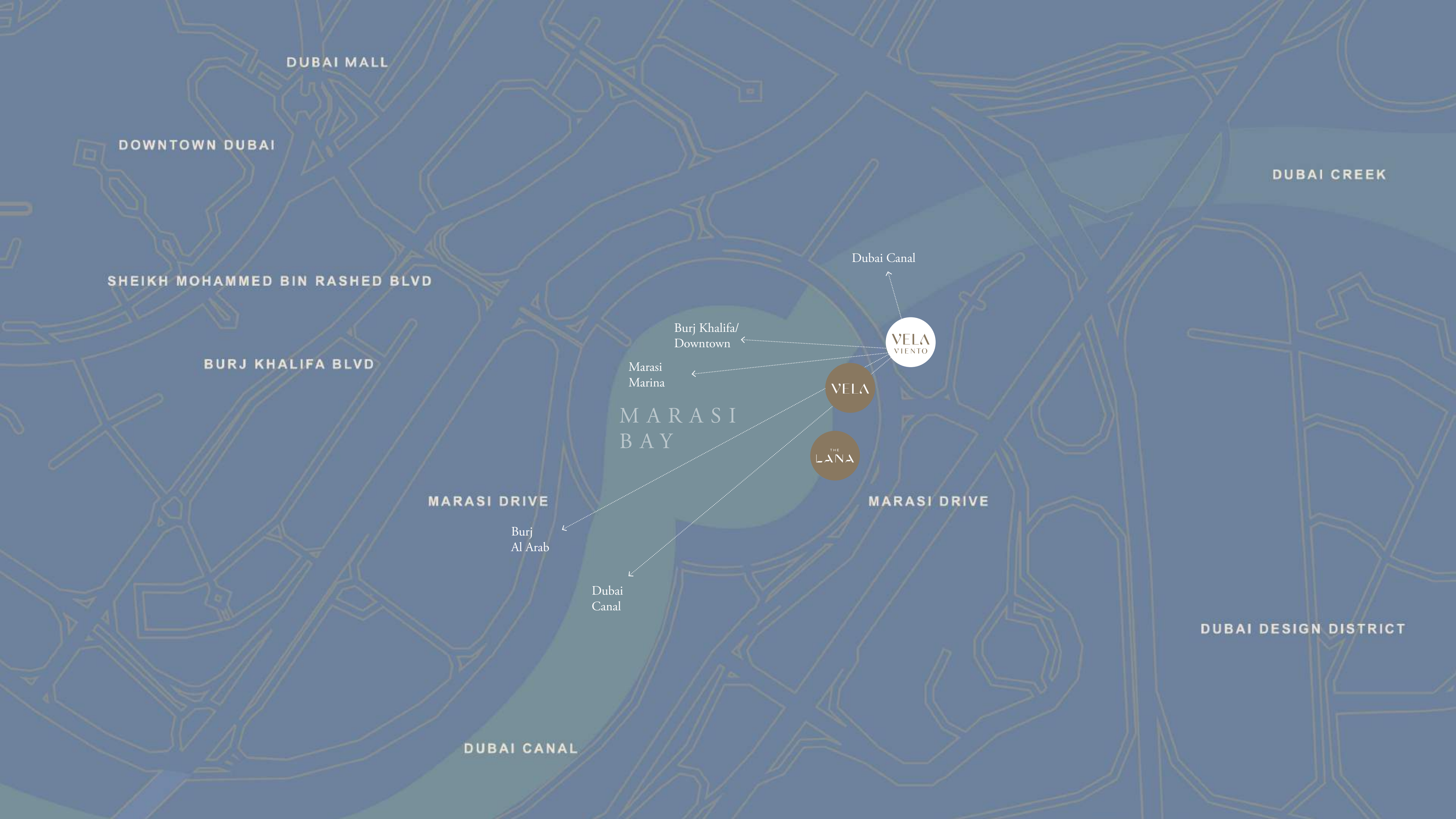
Where land and water converge into a lifestyle
beyond compare, the possibilities unfold

Unveiling the future

At the dawn of Dubai's new luxury district, and framing the gateway to Downtown Dubai, VELA VIENTO draws the eye towards the future of this evolving city.

As a lofty expression of OMNIYAT's vision to reshape Marasi Bay into Dubai's foremost, ultra-luxury waterfront community, VELA VIENTO takes crowning pride of place in the dynamic hub of Dubai's new cultural scene and offers a life in motion, borne upon the song of the wind.





DUBAI MALL

DOWNTOWN DUBAI

DUBAI CREEK

SHEIKH MOHAMMED BIN RASHED BLVD

Dubai Canal

BURJ KHALIFA BLVD

Burj Khalifa/
Downtown

VELA
VIENTO

Marasi
Marina

VELA

MARASI
BAY

THE
LANA

MARASI DRIVE

MARASI DRIVE

Burj
Al Arab

Dubai
Canal

DUBAI DESIGN DISTRICT

DUBAI CANAL

VELA
VIENTO

⌘ *Dorchester Collection*
DUBAI

VELA


⌘ *Dorchester Collection*
DUBAI

THE
LANA
RESIDENCES, DUBAI

DORCHESTER COLLECTION



MARASI BAY MARINA
BY OMNIYAT

The image features three dandelion seed heads against a soft, teal-colored background. The seed heads are positioned in a triangular arrangement: one at the top center, one at the bottom left, and one at the bottom right. The central seed head is in sharp focus, showing its intricate structure of fine, radiating filaments. The other two seed heads are slightly out of focus, creating a sense of depth. The overall mood is serene and ethereal.

A timeless vision ascends,
carving the air
with **celestial splendour**

Revealing unseen wonders

Continuing OMNIYAT's commitment to imagining the extraordinary and building it into reality, VELA VIENTO was conceived by the finest designers who push boundaries to create global masterpieces.

Award-winning practice Foster + Partners crafted VELA VIENTO's horizontal lines and smooth curves into a fascinating rhythm that dances across OMNIYAT's properties, from VELA VIENTO and VELA to The Lana and beyond.

Parisian designer duo Gilles & Boissier have once again brought their signature style to an OMNIYAT property in an exquisite illustration of luxury interior design.



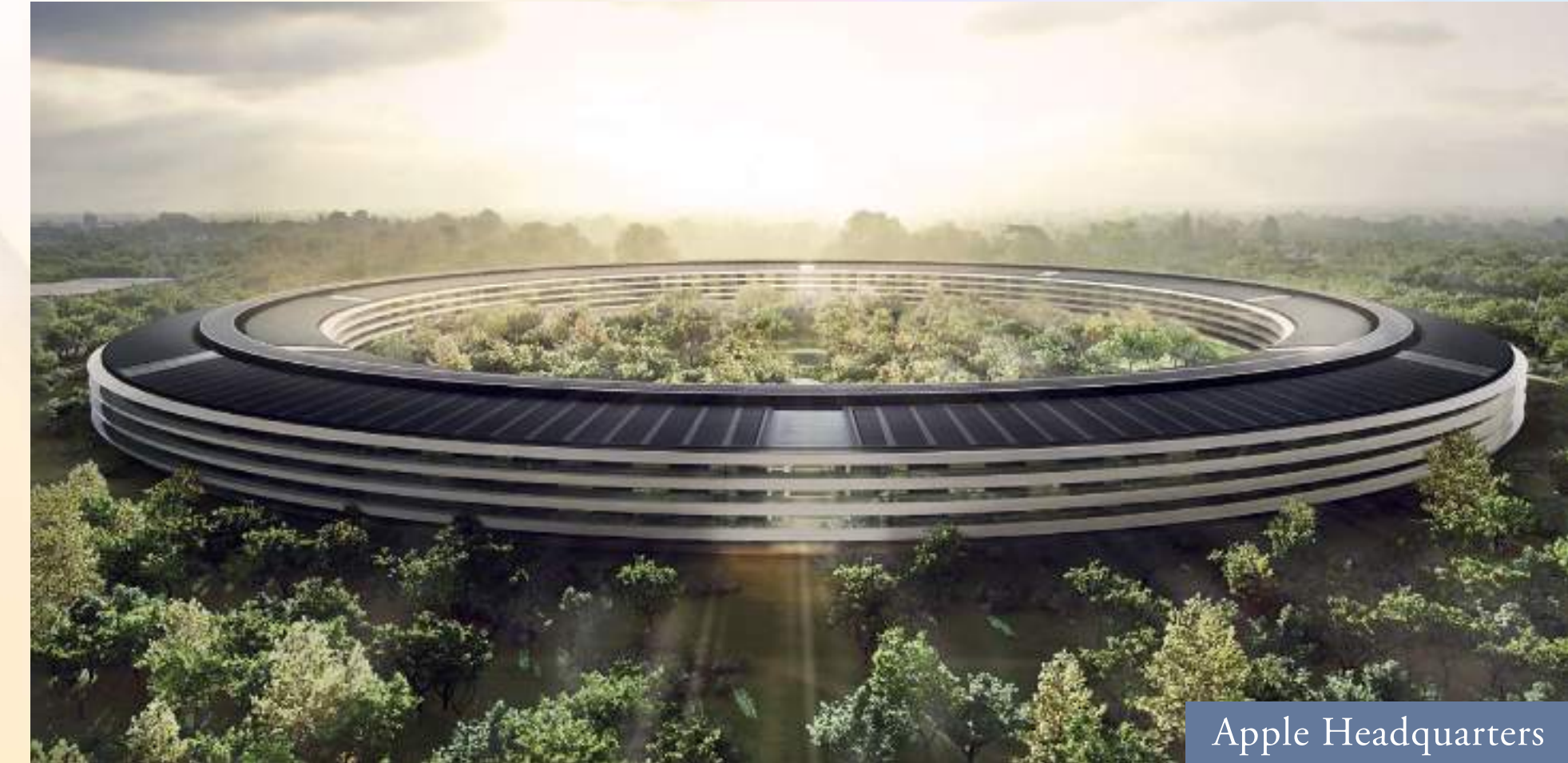
Architecture by **Foster + Partners**

Foster + Partners have used space and form with imagination at their heart to bring VELA VIENTO's ethereal beauty to life.

In the design of VELA VIENTO, the power of space is as relevant as the structures around it. Spaces contain multitudes. They reveal the past and the present. They frame the future and fill it with flowing possibilities.

Portfolio includes:

- Apple headquarters, California
- Millau Viaduct, France
- Gherkin tower, London
- VELA, Dorchester Collection, Dubai.
- The Lana, Dorchester Collection, Dubai
- ORLA, Dorchester Collection, Dubai





Voids are the soul of VELA VIENTO,
connecting the interior and exterior realms
in an interplay of light, shadow, and space.

*They frame the future
and fill it with possibilities.*

Interior Design by **GILLES & BOISSIER**

Distilling the essence of elegance and singularity into an art form, Gilles & Boissier seamlessly blend modernity with timeless allure in VELA VIENTO's captivating spaces. The result is a harmonious juxtaposition of contemporary elements and classical features in a design concept that transcends trends and embodies everlasting beauty.

Portfolio includes:

- Mandarin Oriental, Paris
- Mandarin Oriental Ritz, Madrid
- Hakkasan restaurants in Dubai and USA
- The Lana, Dorchester Collection, Dubai
- VELA, Dorchester Collection, Dubai



Mandarin Oriental Ritz, Madrid



VELA VIENTO





A gateway to horizons
that transcend and inspire



A sublime arrival

Surrounded by lush landscaping and majestic layers of water, the grand, ramping approach leads you to an elevated lobby. Here, the Burj Khalifa is framed as a perfect view between the airy elevations of VELA VIENTO.

Step into the warm welcome of Dorchester Collection's exceptional care, where your valet and doorman await you. The double-height entrance lounge, designed by Gilles & Boissier, provides a wonderful first impression and luxurious meeting place for residents and visitors. Beyond the glass, the views are wonderful in every direction.



*In a shining beacon
of luxury and sophistication,
celestial beauty awaits*

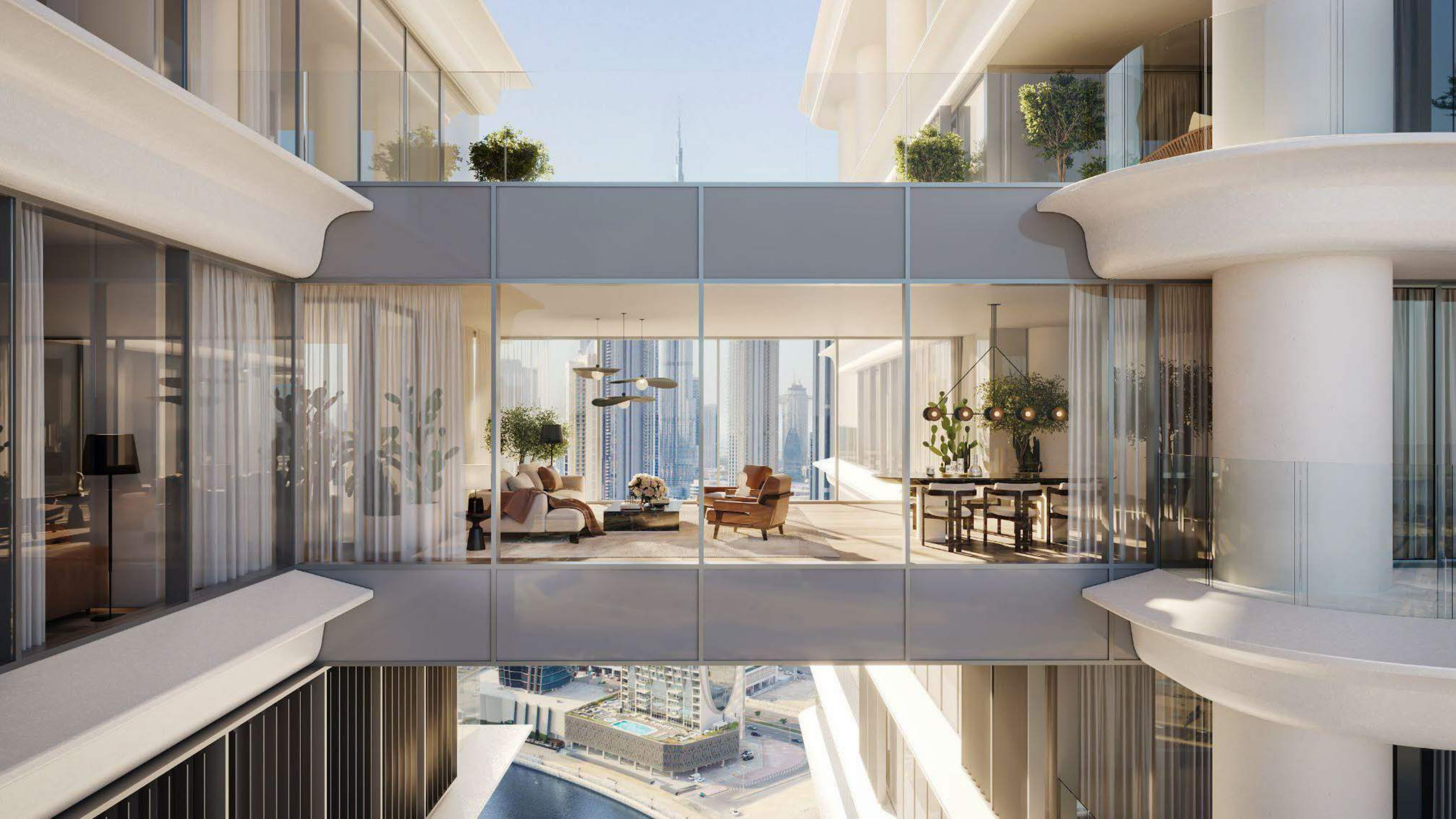


*An alchemy
of beauty
and possibility*

The 92 residences range from two to four-bedroom apartments and are crowned by two extraordinary penthouses.

The residences exemplify the delights of indoor-outdoor living, with select residences boasting private terrace pools and double-height spaces. Generous proportions create an ambiance of vastness, ideal for relaxation, entertainment, and savoring the panoramic views of Marasi Bay, Burj Khalifa and Downtown Dubai.

The spaces and bridges between the towers form 'hanging' dining rooms - an outstanding feature of three unique residences that turn a daily experience into a transcendent moment that blurs glass with sky, the earthly with the celestial.



VELA VIENTO *Residences*

- 92 Exquisite residences
- Fully-furnished and designed by Gilles & Boissier
- Glorious terraces and floor-to-ceiling windows
- Select residences enjoy private pools and double-height spaces
- Panoramic views of Marasi Bay, Downtown Dubai and Burj Khalifa

Celestial Penthouses

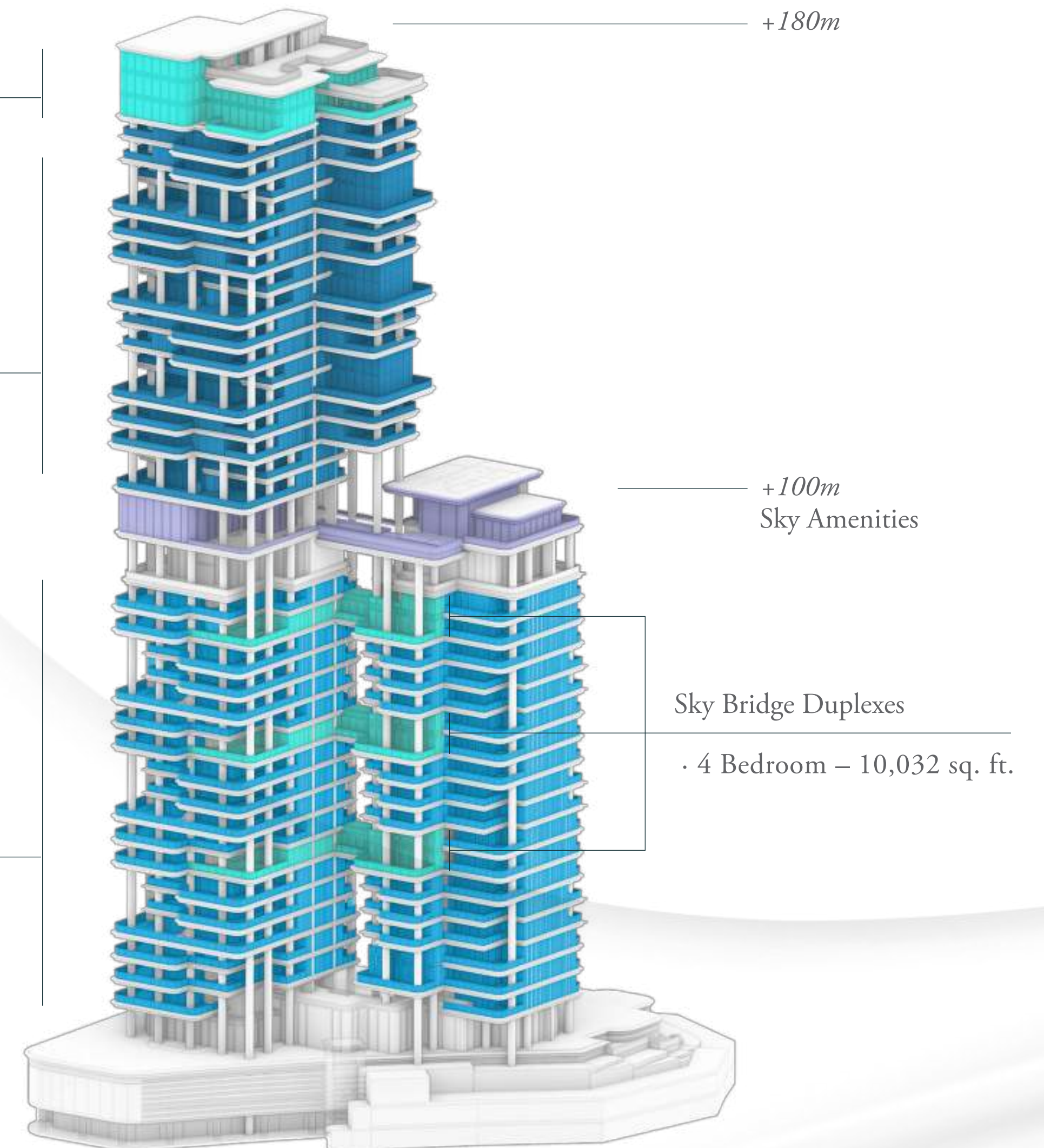
- 4 Bedroom - 13,100 to 14,413 sq. ft.

Horizon Residences

- 4 Bedroom – 6,200 to 9,569 sq. ft.
- 3 bedroom – 4,273 sq. ft.

Viento Residences

- 4 Bedroom – 5,403 to 10,032 sq. ft.
- 3 Bedroom – 4,101 to 5,511 sq. ft.
- 2 Bedroom – 2,852 to 5,134 sq. ft.





Enchanting spaces that beckon
with the promise of *grand serenity*



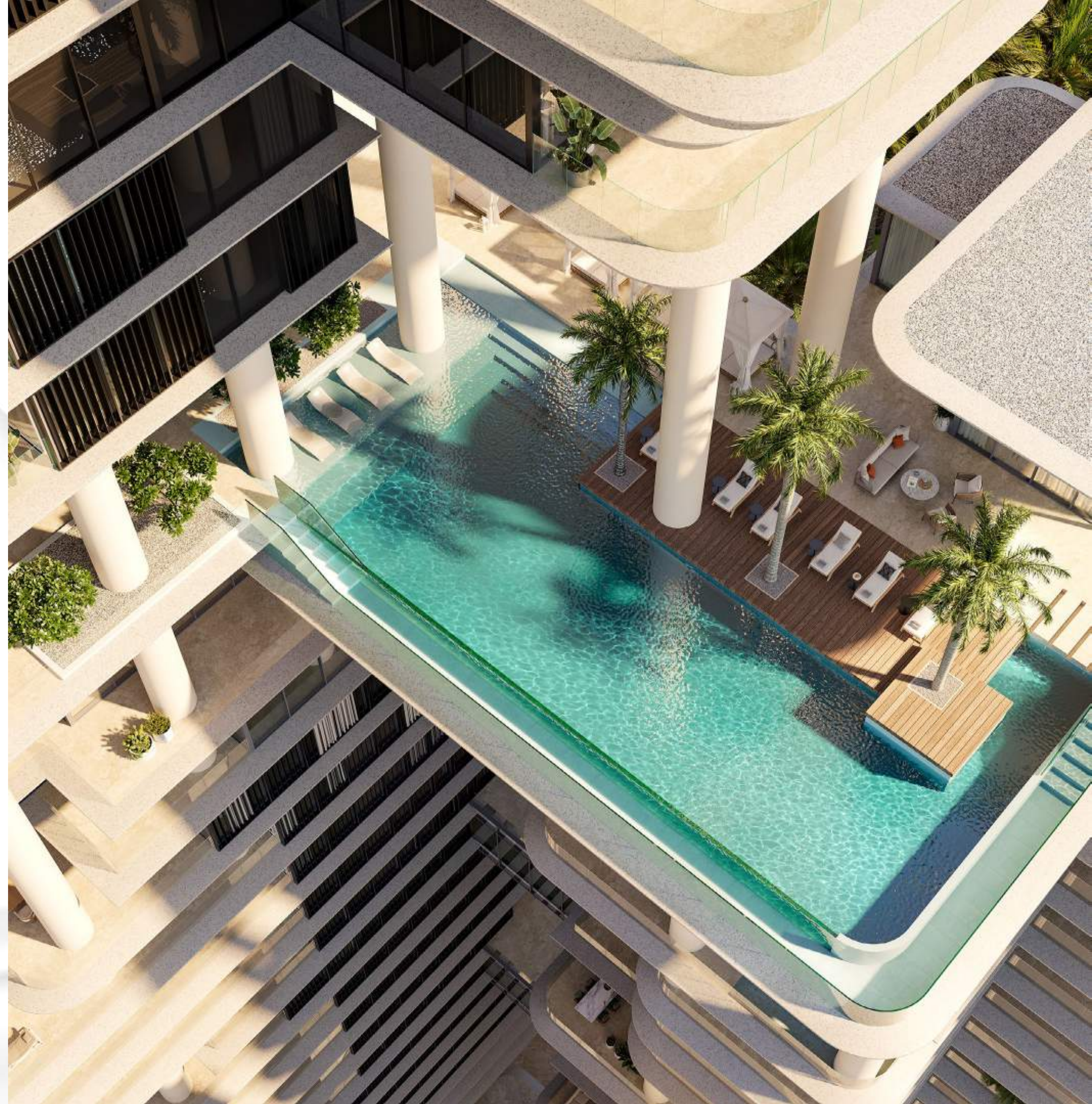
The pinnacle of wellbeing

VELA VIENTO redefines the essence of luxury living with ethereal spaces that enhance self-care and wellbeing.

Touching the sky at 100 metres high at over half of the height of the building, the 'Sky Amenities Deck' is an architectural and experiential feature with a spectacular infinity pool, double-height gym, yoga studio and lounge areas, all overlooking the stunning vistas that surround.

Sunsets never felt so good.

These are complemented by additional amenities on the podium levels, including indoor pools, spa and meeting rooms, as well as direct access to VELA and The Lana Hotel amenities via the waterfront promenade.





Sky amenities

- Full-floor amenity deck on Level 21 (100m high)
- Stunning infinity-edge pool
- Sun decks and lounges
- Double height gym
- Dedicated yoga studio

Podium amenities

- Indoor lap pool & children's pool
- Private spa
- Meeting rooms
- Direct promenade access
- Golf car service to VELA and The Lana



One at Palm Jumeirah

The Lana



Your key to a world of privileges

As a VELA VIENTO homeowner, you're invited to immerse yourself in a world of unparalleled benefits, including access to a range of exceptional amenities across selected OMNIYAT properties.

Indulge in the convenience of access to the nearby VELA facilities, complemented by a membership program that grants entry to The Lana Hotel facilities and spa. Golf-buggy service is available on hand for easy transportation along the promenade.

Embrace seaside leisure with access to the Beach Club at One at Palm Jumeriah by OMNIYAT. The glorious 100-metre white sand private beach is managed by Dorchester Collection and features a private jetty and direct access to the waterfront promenade. For the ultimate voyage, a 'flying' yacht can be arranged to sail you away from Marasi Bay, directly arriving to the jetty.



Outstanding hospitality

Beyond the elegance and enchantment of premium design, a lifestyle of comfort and ease awaits at the hands of Dorchester Collection's legendary service.

Here, owners enjoy the luxury and freedom of a private home with the added convenience and prestige of outstanding service aligned with this world-class reputation.

Managed by

)C Dorchester Collection

Classic

- Common area maintenance
- 24/7 Residence concierge
- Doorman and porter services
- Valet parking
- Lifeguard and gym service
- 24/7 Security services

À La Carte

- Housekeeping
- Laundry
- Maintenance
- Bespoke in-residence catering services
- One-off dining events & functions
- Floristry services
- Bookings, reservations & appointments
- Five-star experiences at home



OMNIYAT

THE ART OF ELEVATION

OMNIYAT is a renowned developer of luxurious architectural masterpieces. The Art of Elevation embodies our dedication to imagining the extraordinary and building it into reality. We elevate the exceptional to create immersive living masterpieces framed by Dubai's iconic skylines.

Since our establishment in 2005, OMNIYAT has redefined each project as an extraordinary, rare piece of art, partnering with global pioneers such as Foster + Partners, Zaha Hadid, Gilles & Boissier, Dorchester Collection and more.

The OMNIYAT touch lies in our ability to enhance experiences and shape the future of luxury living.



OMNIYAT

The images, artist representations, amenities and interior decorations, finishes, appliances and furnishings contained in this brochure are provided for illustrative purposes only. Nothing in this brochure and/or any accompanying document and/or communication from OMNIYAT (whether verbal or in writing) constitutes a promise, representation and/ or warranty in any form whatsoever. OMNIYAT reserves the right to substitute at any time without notice all or parts of the materials, appliances, equipment, fixtures and other construction and design details specified herein with similar materials, appliances, equipment and/or fixtures of equal or better quality, determined at the sole discretion of OMNIYAT. All square footages and dimensions are approximate only and may be subject to change at any time without notice.