

O N E · B

T O W E R

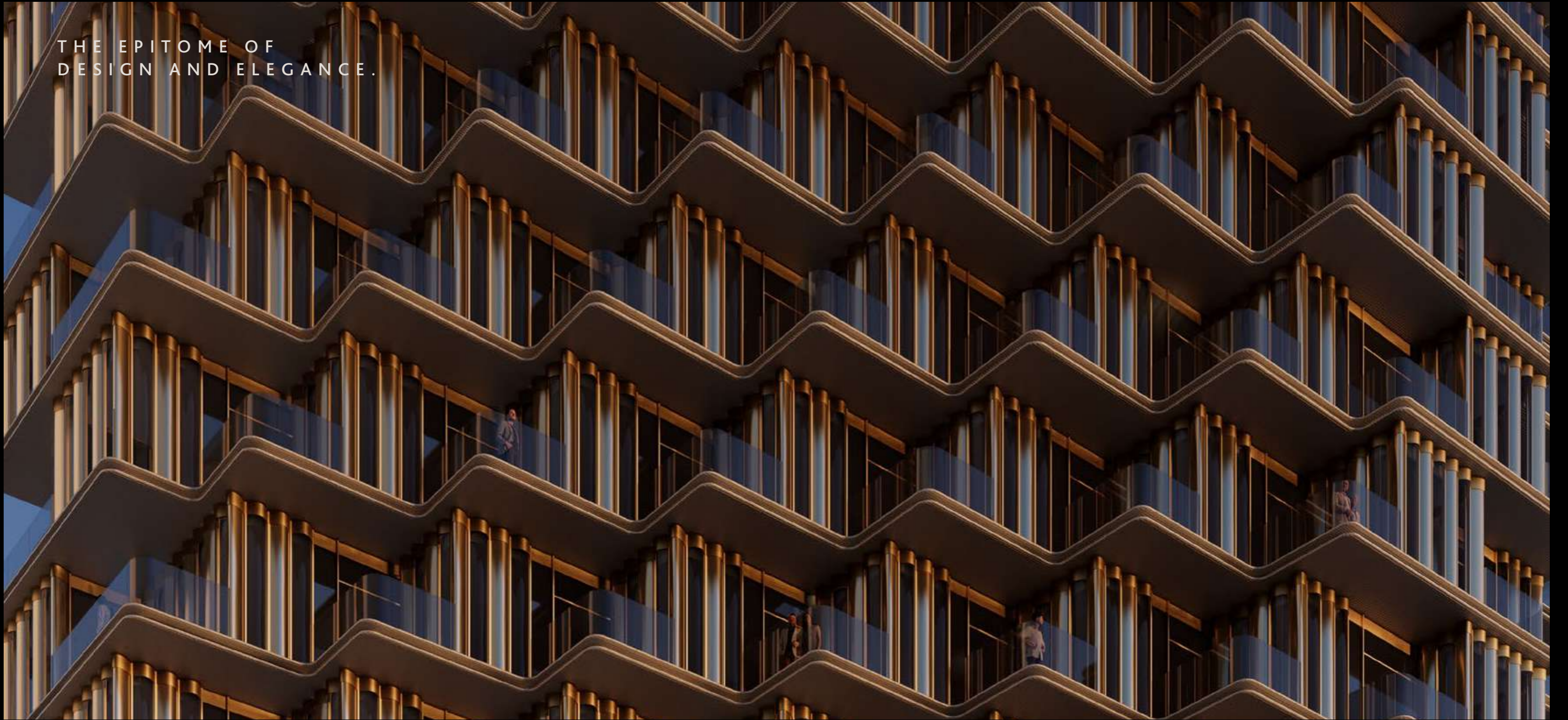
ONE B.

DUBAI'S NEW BENCHMARK IN LUXURY LIVING.

Wasl is proud to present ONE B - an exquisitely crafted residential tower that boasts refined standards in sophistication and opulence. Towering majestically over the picturesque Dubai Water Canal on Sheikh Zayed Road, the 47-storey ONE B will feature an awe-inspiring design and amenities that will redefine luxury which is synonymous with the city.



THE EPITOME OF
DESIGN AND ELEGANCE.



PARKING PODIUM



VIEW FROM SAFA PARK





**A LIVING EXPERIENCE
CRAFTED WITH PASSION
AND REFINEMENT.**

The exceptional design and craftsmanship are evident in even the smallest detail of the tower. Welcoming you to a universe of grandeur is the striking podium with its elevated ceiling and towering column structures. Leaving you in awe the moment you step in, the podium stands as a testament to the opulence you experience inside the tower.

The homes are a world apart. Featuring one, two, three-bedroom as well as duplex and penthouse units, the homes come with expansive spaces and are meticulously designed to impart an aura of absolute luxury and comfort. Equally magnificent are the lifestyle amenities – the finest Dubai has to offer.

AN UNPARALLELED
WORLD OF COMFORT.



DINING ROOM



LIVING SPACE



O N E · B

RESTO BAR CAFE



ELEVATING YOUR LIFESTYLE EXPERIENCE.

The amenities at ONE B give residents the opportunity to relax, play, train, and commit to a wellness-first lifestyle. From state-of-the-art training equipment, gym areas and yoga spaces, a podium-level swimming pool, enticing retail spaces to the enchanting and vibrant kids' playroom, ONE B is a haven for balanced living.





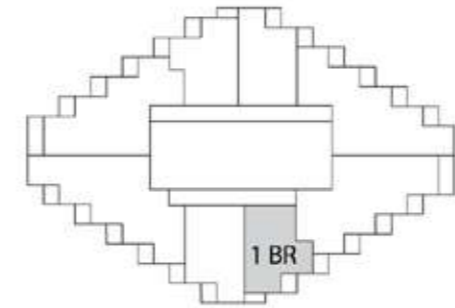
OUTDOOR POOL

KIDS' PLAYROOM



UNIT PLANS

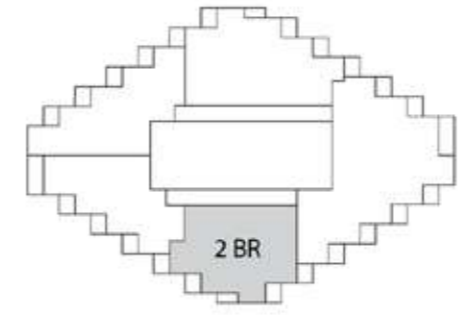
1-BEDROOM WITH BALCONY



1 BEDROOM W/ BALCONY LEVEL 8

Suite Area	823 sq.ft / 76.5 sqm
Balcony Area	104 sq.ft / 9.7 sqm
<hr/>	
Total Area	928 sq.ft / 86.2 sqm

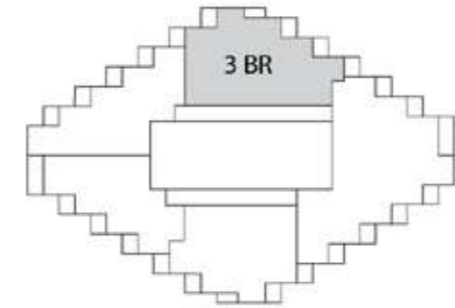
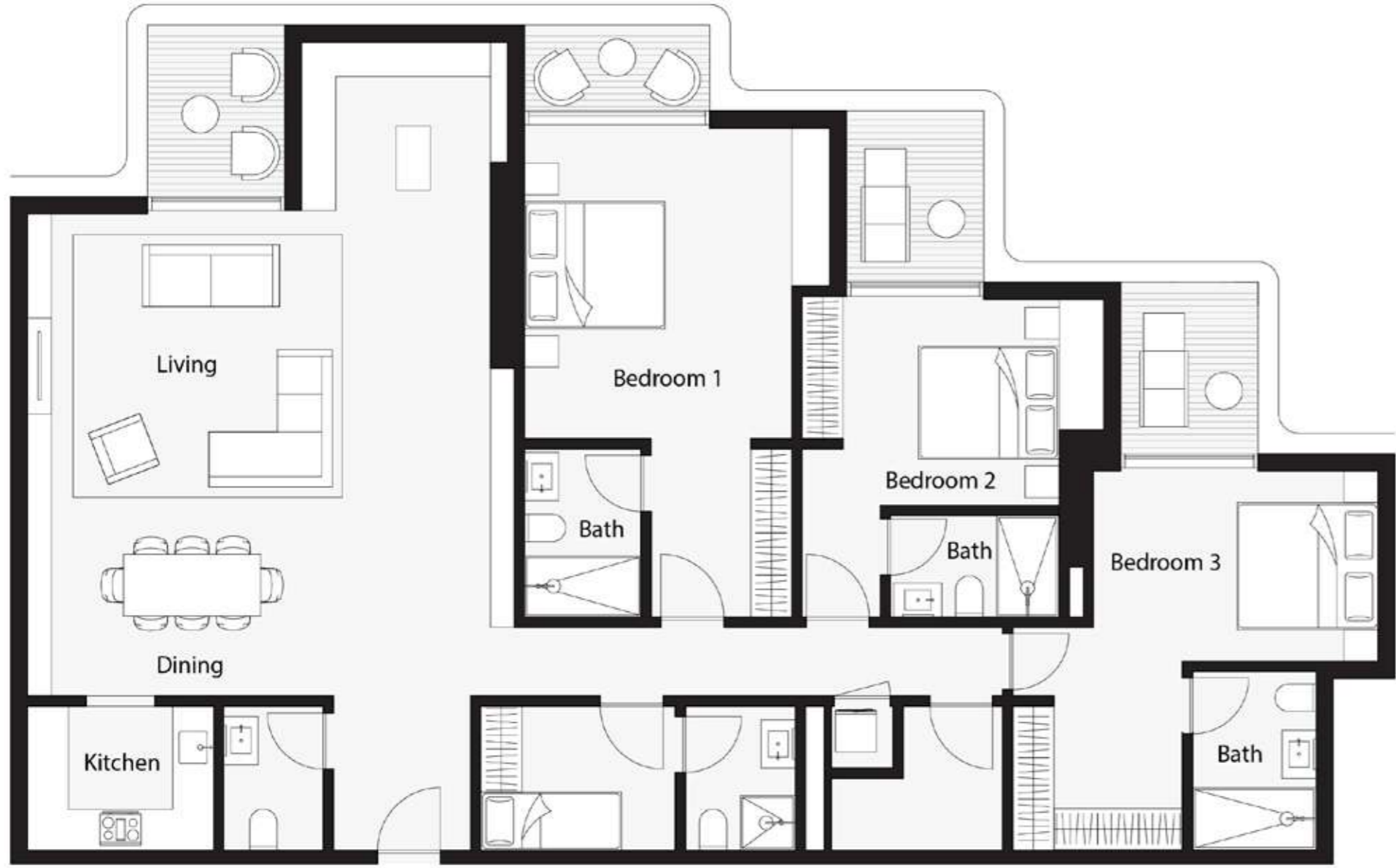
2 - BEDROOM WITH BALCONY



2 BEDROOM W/ BALCONY
LEVEL 19

Suite Area	1631 sq.ft / 151.6 sqm
Balcony Area	161 sq.ft / 15 sqm
Total Area	1792 sq.ft / 166.6 sqm

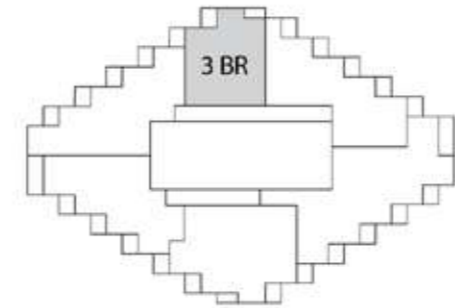
3 - BEDROOM WITH BALCONY



3 BEDROOM W/ BALCONY
LEVEL 19

Suite Area	1934 sq.ft / 179.7 sqm
Balcony Area	221 sq.ft / 20.6 sqm
Total Area	2155 sq.ft / 200.3 sqm

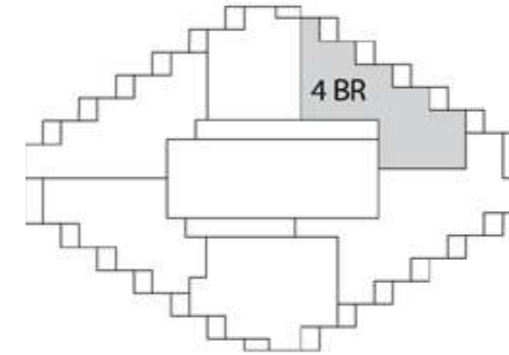
3 - BEDROOM DUPLEX WITH BALCONY



3 BEDROOM DUPLEX
W/ BALCONY LEVEL 35

Suite Area	1165 sq.ft / 108.3 sqm
Balcony Area	102 sq.ft / 9.5 sqm
<hr/>	
Sub - Total Area	1267 sq.ft / 117.8 sqm

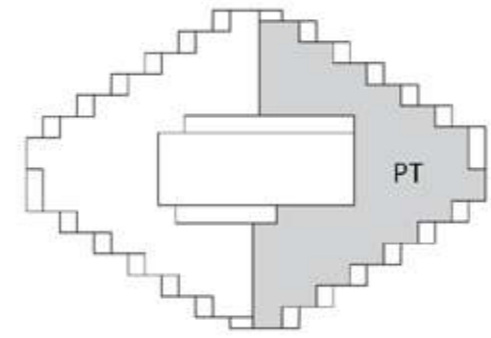
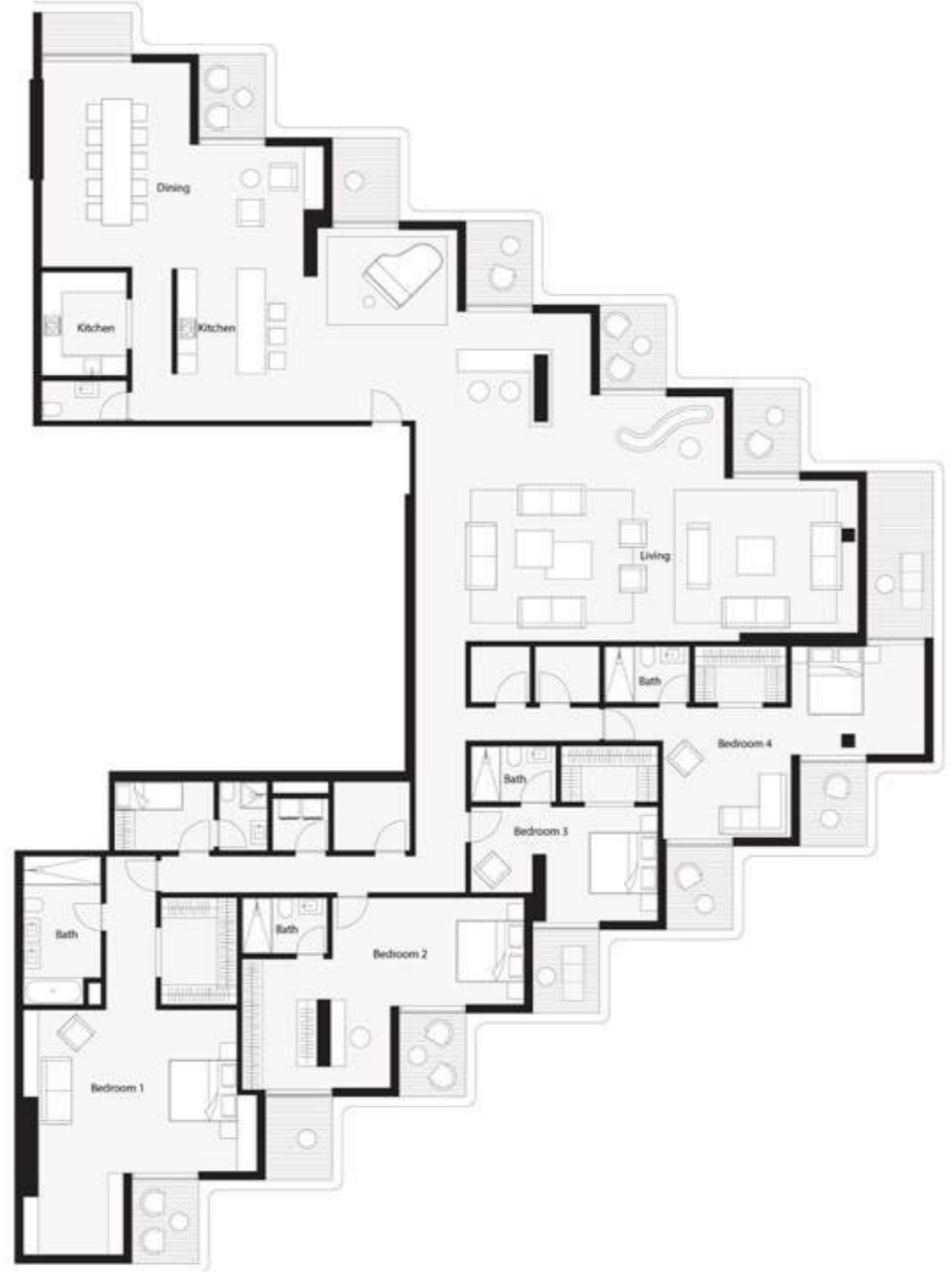
4 - BEDROOM DUPLEX WITH BALCONY



4 BEDROOM DUPLEX
W/ BALCONY LEVEL 35

Suite Area	1550 sq.ft / 144 sqm
Balcony Area	240sq.ft / 22.3 sqm
<hr/>	
Sub - Total Area	1790 sq.ft / 166.3 sq

PENTHOUSE WITH BALCONY

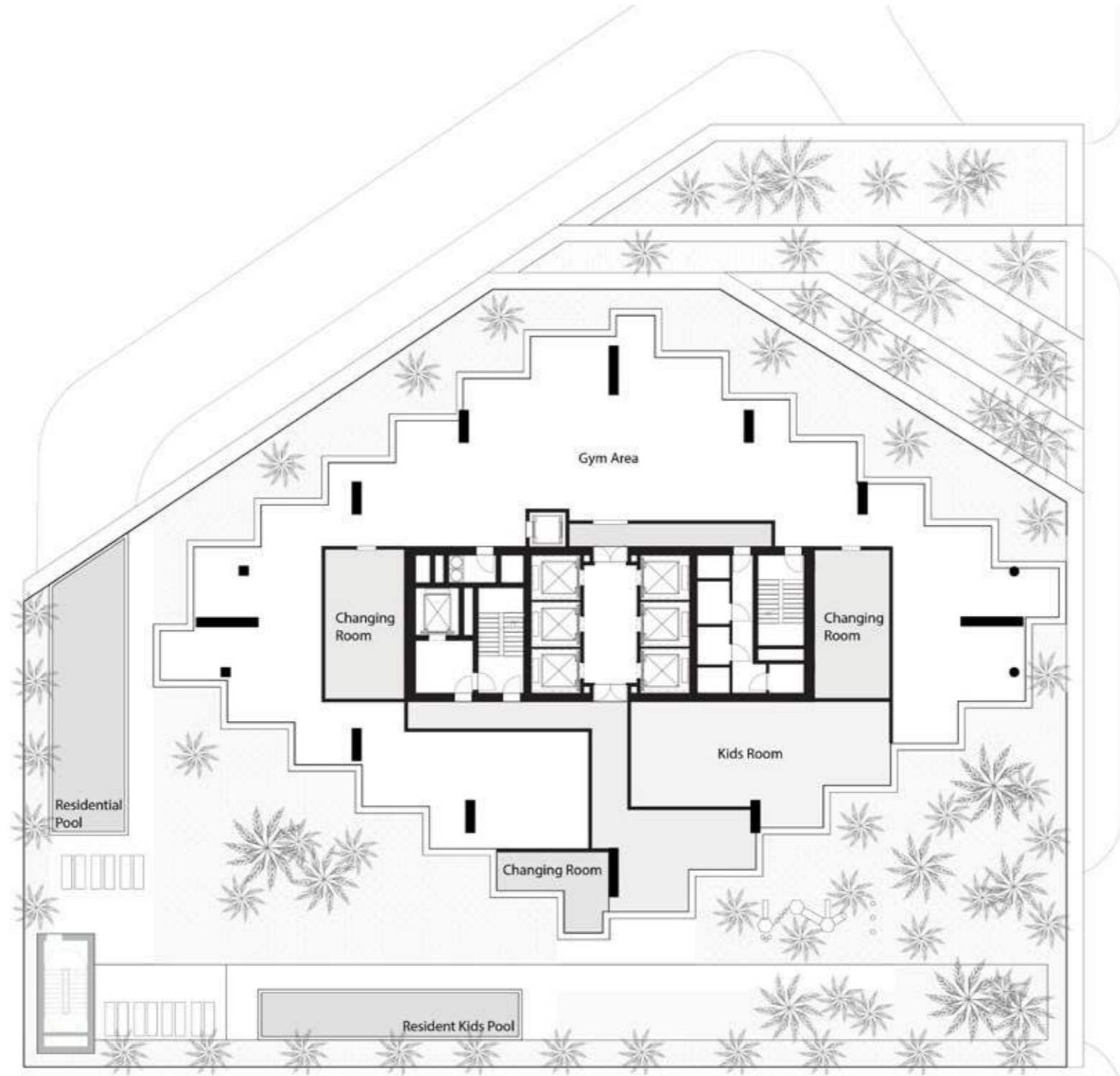


PENTHOUSE W/ BALCONY
LEVEL 47

Suite Area	4811 sq.ft / 447 sqm
Balcony Area	818 sq.ft / 76 sqm
Total Area	5629 sq.ft / 523 sqm

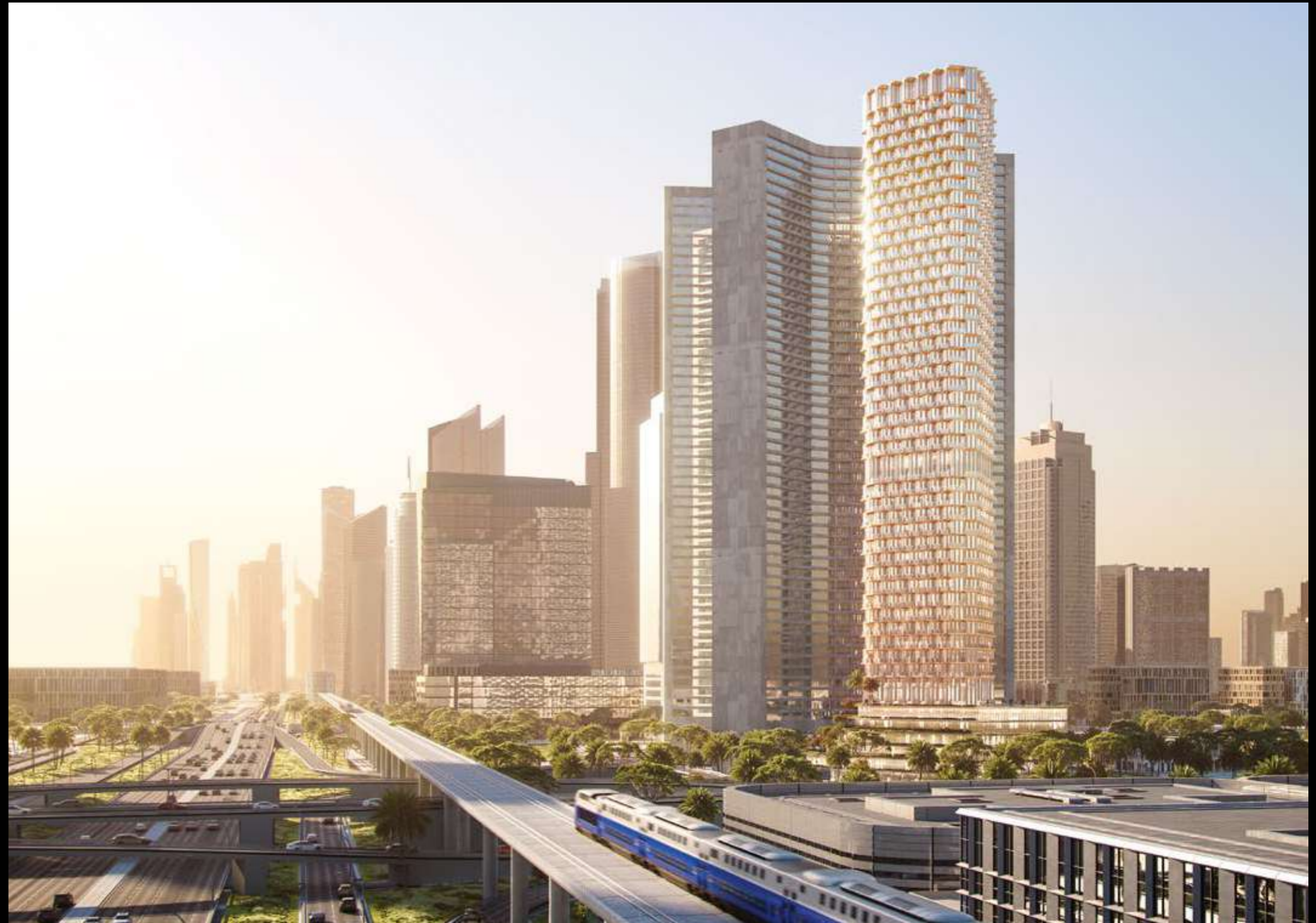
FLOOR PLANS

AMENITIES



BREATHTAKING VIEWS
THAT MAKE YOUR EVERYDAY
RICHER.

Nestled along the iconic Sheikh Zayed Road, ONE B's unparalleled location offers a captivating panorama as it gracefully overlooks the stunning Dubai Water Canal. This prime position in Dubai's upscale Business Bay, not only defines ONE B as a beacon of architectural elegance, but also transforms each residence into a waterfront sanctuary.



WHERE EVERY PRIME
DESTINATION IS RIGHT
IN YOUR NEIGHBOURHOOD.

DUBAI WATER CANAL BOARDWALK - **1 MINUTE**

SAFA PARK - **5 MINUTES**

BUSINESS BAY METRO STATION - **10 MINUTES**

BURJ KHALIFA - **12 MINUTES**

DUBAI MALL - **12 MINUTES**

DUBAI WORLD TRADE CENTRE - **14 MINUTES**

DUBAI INTERNATIONAL AIRPORT - **20 MINUTES**





**AN INVESTMENT THAT
KEEPS ON GIVING.**

Homes with a kind heart, ONE B offers you a once-in-a-lifetime opportunity to invest in a project that will provide meals to vulnerable communities across diverse nations.

wasl