



THE VALLEY

EMAAR



**“The biggest adventure
you can ever take is to live
the life of your dreams.”**

- Oprah Winfrey



THE VALLEY



Where do you go to dream?

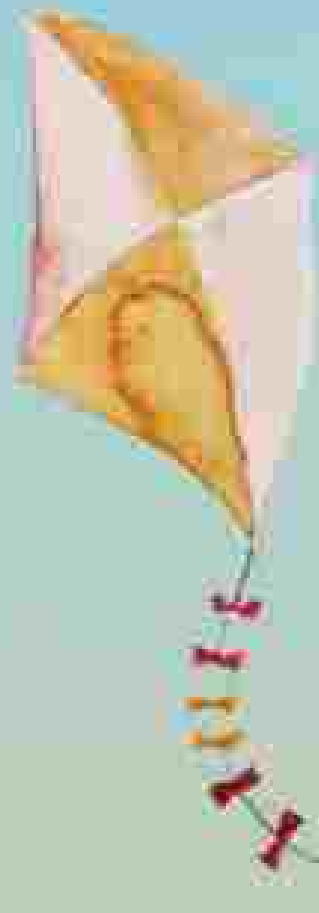
A place where you can escape the city, where your mind can wander endlessly, where you and your loved ones can bond uninterruptedly, where you feel like you belong, where you are limitless.

Bringing the magic of your hometown to Dubai

THE VALLEY is not just designed for living. It's designed for dreaming. The quaint town harks back to the good old days of close-knit neighbourhoods.

Come home to a place that brings back the nostalgia of your hometown, with everything you need to power your dreams.

Make yourself at home in THE VALLEY.



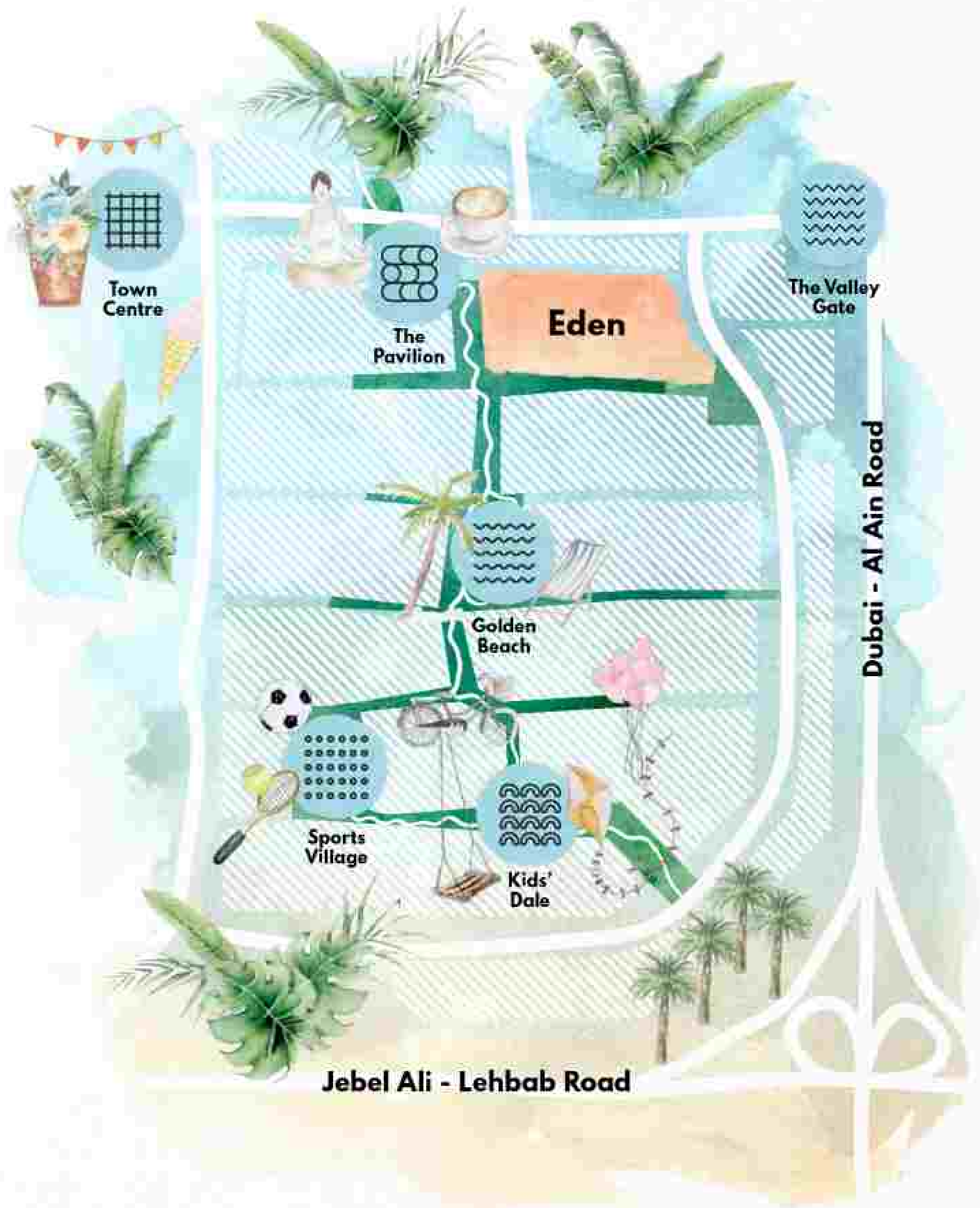
Dreams begin here



ذافالي
THE VALLEY
EMAAR

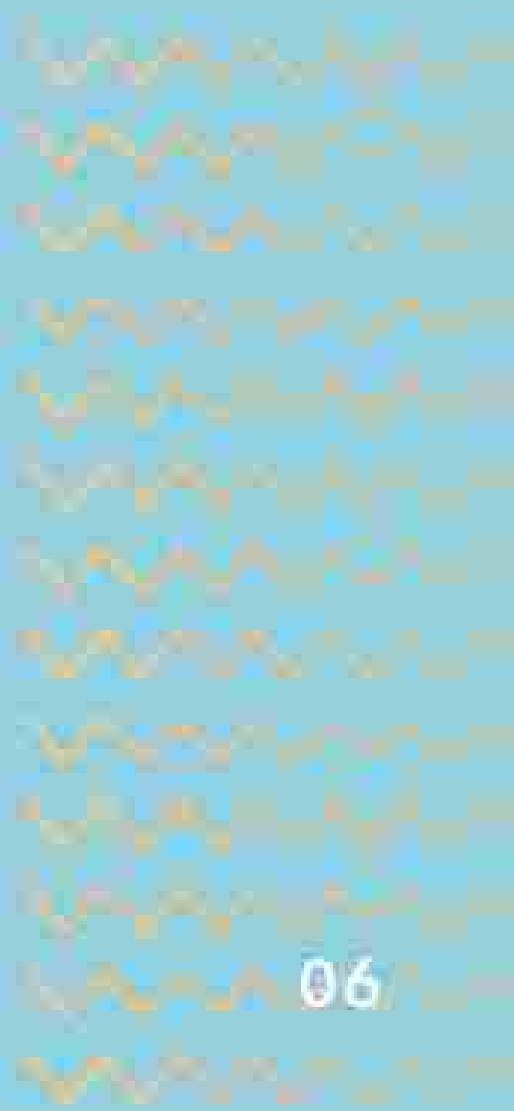


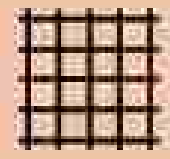
THE VALLEY



The lifestyle of your dreams awaits

At THE VALLEY, EMAAR has put together its finest minds to bring you the best-in-class family amenities that have never been seen before in the region.





Town Centre

32,000 sqm

Brighten up your day at the beating heart of THE VALLEY.



Indoor & outdoor retail



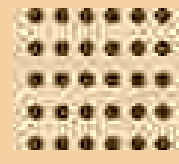
Farmers' market



Gourmet dining







Sports Village

20,000 sqm

Enjoy an active, fulfilling & healthy lifestyle at the Sports Village.



Sports courts



Playground & outdoor gym



Bicycle & running tracks



Kids' Dale

10,000 sqm

Let your little ones' imagination soar at Kids' Dale.



Rock climbing

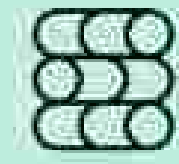


Amphitheatre



Archaeological play area





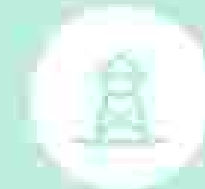
The Pavilion

33,000 sqm

Unwind with a sunset yoga class at The Pavilion.



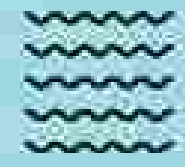
Zen & oasis garden



Observation tower



Maze



Golden Beach

30,000 sqm

Spend your afternoons basking under the sun at the Golden Beach.



Water splash



Kids' play areas



F&B





**Meet EDEN
at THE VALLEY**





Home Dream Home

THE VALLEY's first villa community, EDEN, is designed to elevate your every day.

With well-shaded walkable streets, generous green spaces and an array of exceptional amenities, you and your loved ones will live the lifestyle you have always dreamt of.





THE VALLEY

EDEN



Dubai - Al Ain Road

● EDEN
○ The Pavilion

- 1 Bicycle track
- 2 Basketball courts
- 3 Kids' play area
- 4 Amphitheatre
- 5 Edu-scape playground
- 6 Multi-purpose lawn
- 7 Beach & splash pad
- 8 Hammock zone
- 9 Zen garden
- 10 Observation tower
- 11 Community centre
- 12 Central gardens
- 13 Food trucks
- 14 Kiosks
- Alley



Choose your dream villa

EDEN offers you 3- and 4-bedroom villas in three architectural styles.

Each villa boasts easy access to a series of outdoor parks for you and your children to enjoy.

The epitome of the indoor/outdoor lifestyle.



SPRUCE



MAY BELL



IRIS



Spruce

Whether you're arriving on foot or by car, the sight of SPRUCE is truly special.

As its warm and earthy tones welcome you, you will feel grounded in the magic of home.

3-bedroom
villas

4-bedroom
villas

Garden
views

Opens
to alley

Large
windows
& terraces







May Bell

Imagine waking up at MAY BELL and heading downstairs to your loved ones having breakfast in a sun-soaked sanctuary.

Purist and minimal, MAY BELL focuses on what truly matters – family.

3-bedroom villas

4-bedroom villas

Garden views

Opens to alley

Large windows & terraces





Iris

Picture this — you, parking your car in front of this stunning masterpiece at sunset.

The IRIS collection is sleek, light and simply what dreams are made of.

3-bedroom
villas

4-bedroom
villas

Garden
views

Opens
to alley

Large
windows
& terraces





Your every whim, within reach

Just a 5-minute walk from EDEN, The Pavilion will offer an impressive array of retail and leisure experiences for the very first residents at THE VALLEY.

-  Bicycle track
-  Kids' play area
-  Oasis garden
-  Amphitheatre
-  Maze
-  Zen garden
-  Observation tower



LOCATION

Back to our roots

THE VALLEY is strategically located on Dubai-Al Ain Road, a major thoroughfare connecting two of the UAE's most iconic Emirates.

The duality of being away from the busyness of Dubai, while still being well-connected to the city, makes THE VALLEY the UAE's most accessible family sanctuary.

05

minutes' drive
from Dubai
Rugby Sevens

08

minutes' drive
from Dubai
Outlet Mall

25

minutes' drive
from Burj Khalifa/
The Dubai Mall

25

minutes' drive
from Dubai
International
Airport





A dream city for investors

20 Mn expected annual visitors by 2025

Over 3 Mn residents

Home to **over 200** nationalities

Amongst **10** most visited cities in the world in 2018*

1st most visited city in the world by 2025

Home to **Expo 2020**

Competitive residential real estate prices

One of the **most secure** cities for value gains through property investment





Building dreams since 1997

A leader in the global real estate market, EMAAR has grown over the years to become the largest real estate developer outside of China. You will be investing with one of the best-regarded brands in the world*.

105,500+ happy homebuyers globally

69,000+ happy homebuyers in the UAE

56,000 units completed to date globally

Presence in **12+** global markets

1.6 Bn square feet of landbank

4.5 Bn USD market cap Emaar Development

Developer of **Burj Khalifa & The Dubai Mall**

*Source: Euromonitor International 2018 report



CONTACT US

Toll Free : 800 37373

Hotline : +971 52 754 3244

Email : sales@drehomes.com

Visit Us For More Info:-

<https://drehomes.com/property/emaar-the-valley-eden-villas/>

EMAAR