



# LUVA

RESIDENCES

THE LIGHT OF MEYDAN



# CONTENTS



## THE ORBIT

Dubai  
Meydan  
MBR City, District 11  
Location  
Master Community



## NEW BEGINNINGS

Lua Residences



## THE RADIANCE

Design  
Aesthetics  
Functionality



## THE ATMOSPHERE

Amenities



## THE LUMINARY

Swank Development



## THE REVEL IS IN THE DETAIL

Our world is guided by the interplay of details - big and small, bright and sparkly, but also the lights and the darks. Waxing and waning of energies.

Perfection in living spaces is all about getting the details right. Location, experiences, ambiance, and everything else coming together to enable intuitive designs that empower innate desires.



# THE ORBIT



## DUBAI

Dubai's allure extends far beyond its iconic skyline. As a lively metropolis, Dubai provides an exceptional mix of security, a prime geographical location, and superior living standards. Apart from its breathtaking architecture and lavish offerings, Dubai prides itself on its safety, world-class educational and healthcare systems, and a rich multicultural community.

With a business friendly environment and streamlined processes, Dubai empowers investors to reach their full potential.

Owning a home in Dubai isn't just an investment; it's a gateway to a life filled with endless possibilities.

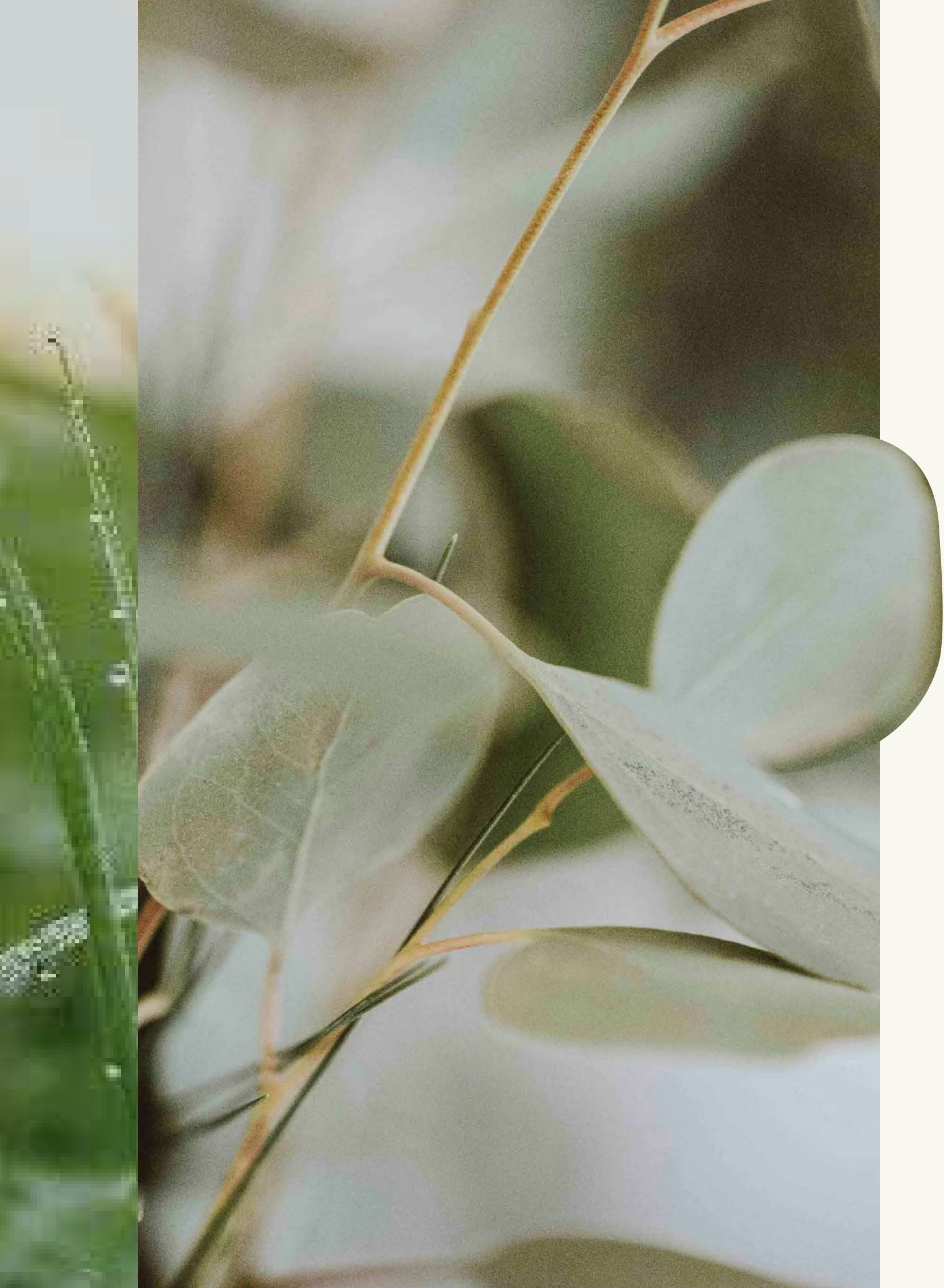
# MEYDAN

Meydan is the visionary concept of His Highness Sheikh Mohammed Bin Rashid Al Maktoum, UAE Vice President, Prime Minister and Ruler of Dubai.

Since its inaugural opening in 2010, Meydan has attracted the attention of the world with the Meydan Racecourse being the centrepiece. MBR City, District 11 is already considered to be one of Dubai's most anticipated projects, with innovative developments and opportunities on the horizon.

The Dubai of tomorrow starts here.



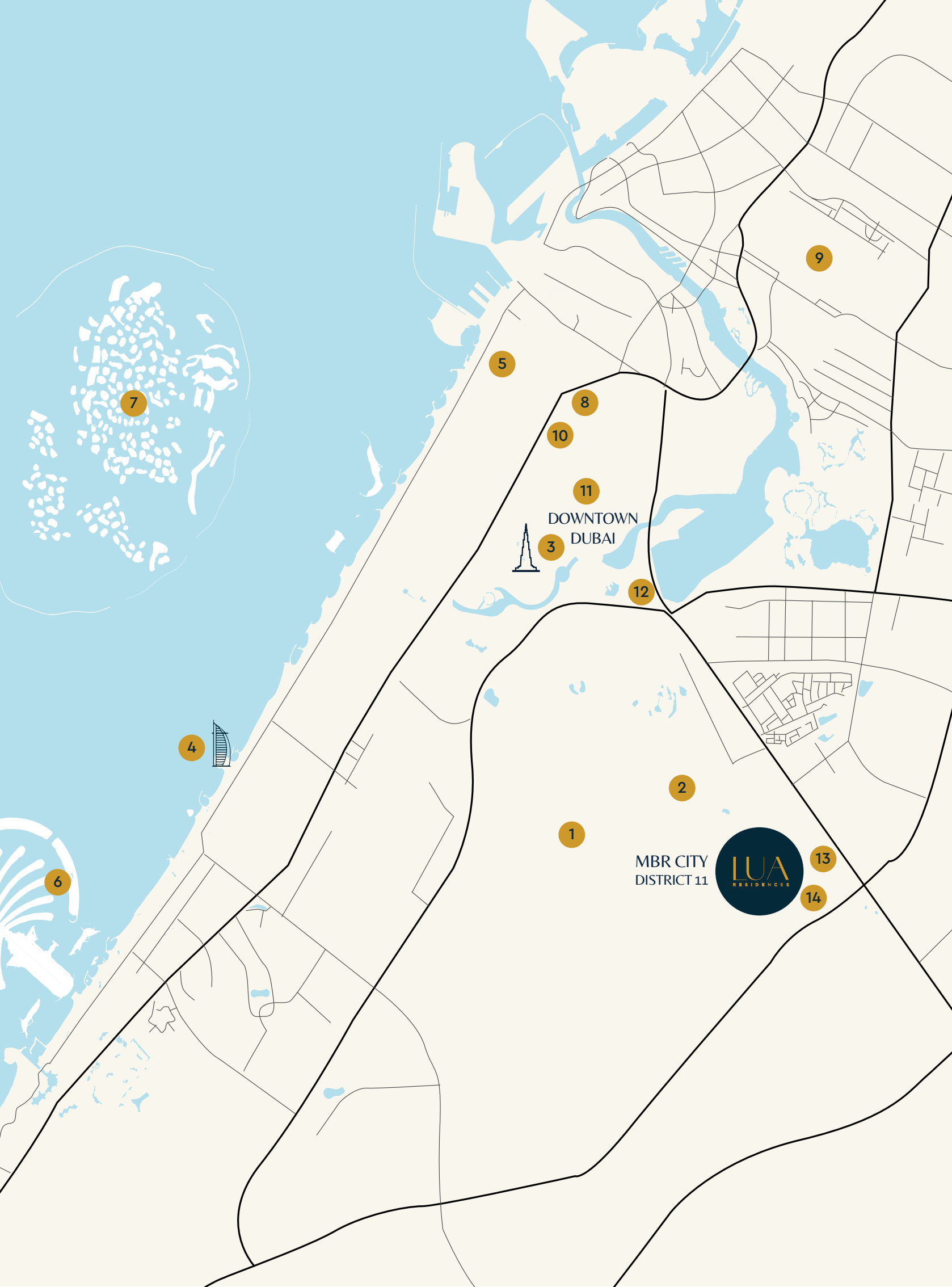


## MOHAMMED BIN RASHID CITY, DISTRICT 11

District 11 is a premier lifestyle community set in the heart of the city. It offers elegant homes overlooking a crystal lagoon, sublime beaches, sweeping parkland, cycling and running tracks and breathtaking architecture.

District 11 has redefined upscale community living with picturesque walkways sheltered by tree-lined avenues and a crystal lagoon.

This stunning 21st-century oasis offers residents an idyllic and exclusive beachfront retreat, at the very centre of Dubai. District 11 ensures residents have access to parks, lawns, green corridors, and landscaped gardens, making it the perfect backdrop for natural and healthy living.



# POINTS OF INTEREST

- 1 Mohammed Bin Rashid Al Maktoum City
- 2 Meydan Racecourse
- 3 Burj Khalifa
- 4 Burj Al Arab
- 5 Jumeirah Mosque
- 6 Palm Jumeirah
- 7 World Islands
- 8 Emirates Towers
- 9 Dubai International Airport
- 10 Dubai International Financial District
- 11 Dubai Mall
- 12 Dubai Design District
- 13 Kent College
- 14 Lycee Libanais Francophone School



# THE MASTER COMMUNITY

- VAST OPEN SPACES
- CRYSTAL LAGOON
- COMMUNAL GARDENS
- SPORTS FACILITIES
- GATED COMMUNITY
- MOSQUE
- RETAIL
- SUPERMARKETS
- SCHOOLS
- CLINICS

LUA  
RESIDENCES





NEW BEGINNINGS

# Welcome to Lua Residences

An exclusive gated community of 42 exquisite villas surrounded by lush landscaping nestled in Dubai's most prestigious community.



# THE COMMUNITY



# MASTERPLAN

- 1 ENTRANCE
- 2 COMMUNITY/BBQ AREA
- 3 UTILITY AREA
- 4 CAPELLA VILLAS
- 5 ARA VILLAS
- 6 LUNA VILLAS
- 7 POLARIS VILLAS





# THE RADIANCE

# A LIFE UNPARALLELED

When "extra" is the new normal, it becomes a challenge to find a distinctive signature statement. Understanding and using the finer nuances, specifics and particulars is nothing less than an art.

Here's to a life beyond the conventional  
— bespoke living crafted just for you.



# DESIGN APPROACH

We approach design with a profound understanding of our customers, translating this comprehension into impeccable designs that foster memorable moments, elevating the concept of living to new heights.

Exquisite finishes, layering, and textures create a living space that goes beyond the surface, inviting you to discover more than meets the eye.

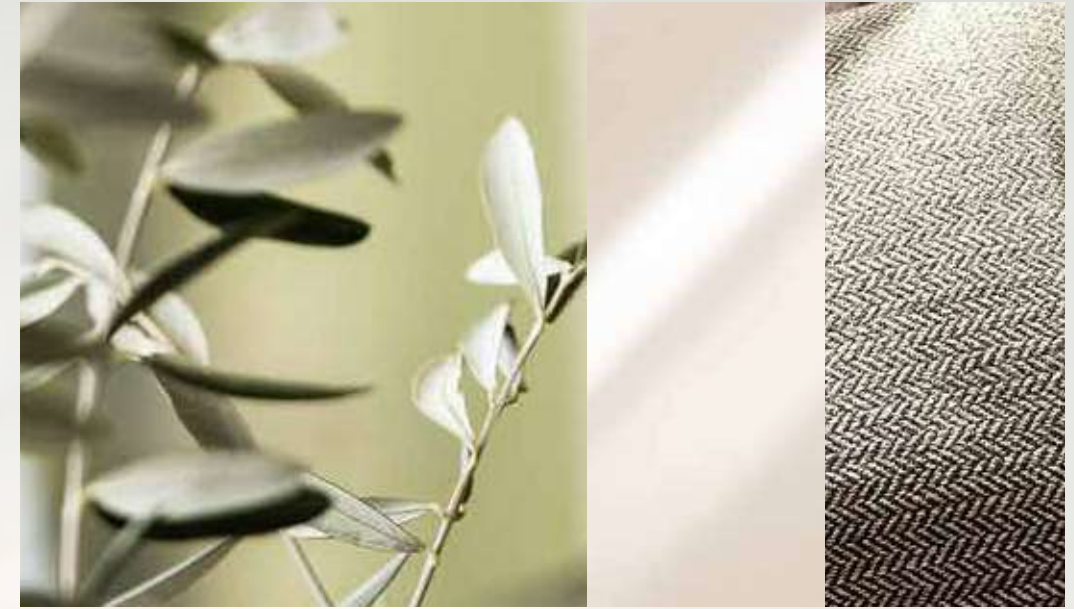






## CONTEMPORARY SOPHISTICATION

From sleek, contemporary lines to timeless architectural features, Lua Residences offers a harmonious fusion, creating a truly distinctive ambience.



## SPACIOUS LAYOUTS

Open, adaptable living spaces designed to enhance your everyday lifestyle. Spacious layouts seamlessly blend functionality with elegance, offering you the freedom to create your own oasis of comfort and style.



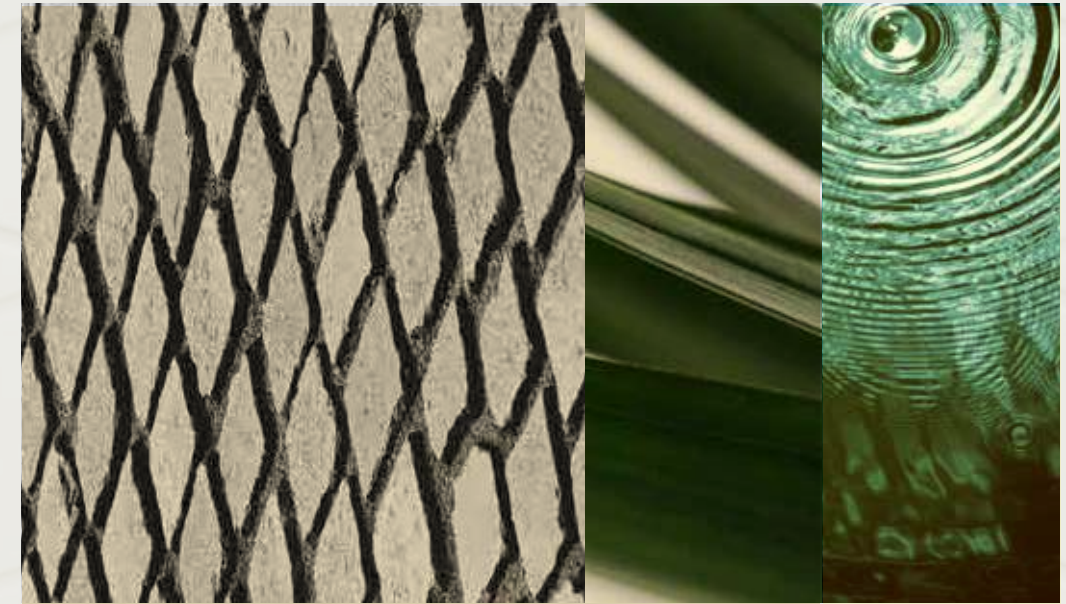
## EXQUISITE CRAFTSMANSHIP

At Lua Residences, different materials come together to enrich the depth and character of our interiors. From the smooth, polished surfaces of marble to the rustic charm of timber, every element is carefully chosen. From meticulously crafted finishes to intricate architectural elements, the residences reflect a dedication to perfection that is synonymous with Portuguese tradition.



## NATURAL ELEMENTS

The soothing rich tones of timber and natural stone, along with the natural elements that adorn the interiors and exteriors, add a layer of organic beauty to every space, inviting you to embrace the essence of tranquil living.



## COBBLESTONE PAVEMENTS

Inspired by the cobblestone streets of Portugal, these intricately laid patterns infuse the surroundings with a sense of history and artistry.

A low-angle shot of pine trees against a clear blue sky with a crescent moon. The pine needles are dark green and the branches are silhouetted against the sky. The moon is a thin crescent, positioned centrally in the upper half of the frame.

# STUNNING LAYOUTS

Each villa has its own unique architectural elegance and impeccable style. The aesthetics emphasize retaining the natural patina and earthiness, grounding the design to create a warm and welcoming atmosphere for everyone in the family. Each villa also comes with smart home integration, adding modern convenience to timeless charm.

# CAPELLA VILLAS

TWIN 4-BEDROOM | 3,336.62 sq.ft and 3,437.05 sq.ft | 28 UNITS | PRIVATE SWIMMING POOL, ELEVATOR AND LANDSCAPED GARDEN

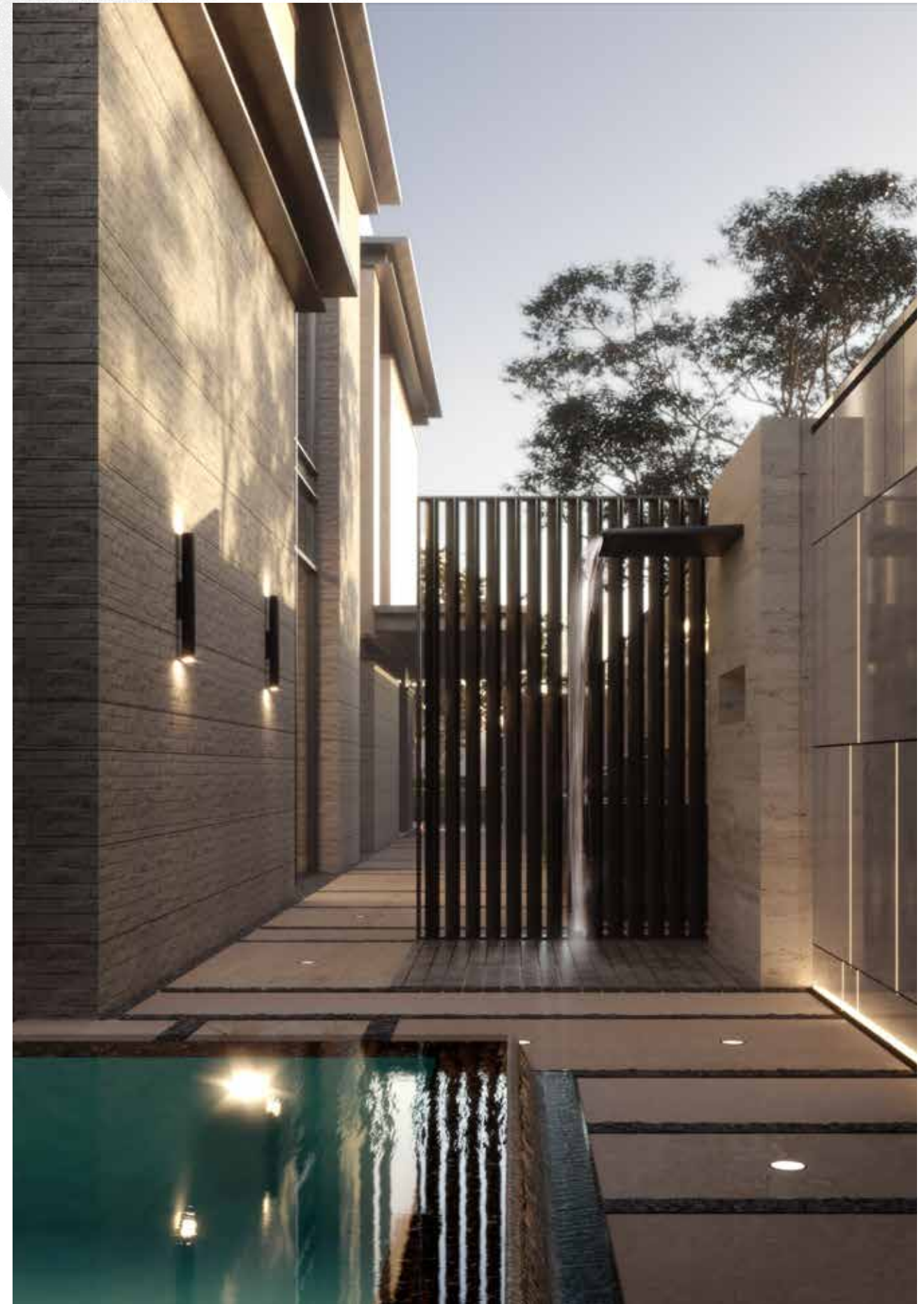








FEATURE POOL & OUTDOOR SHOWER



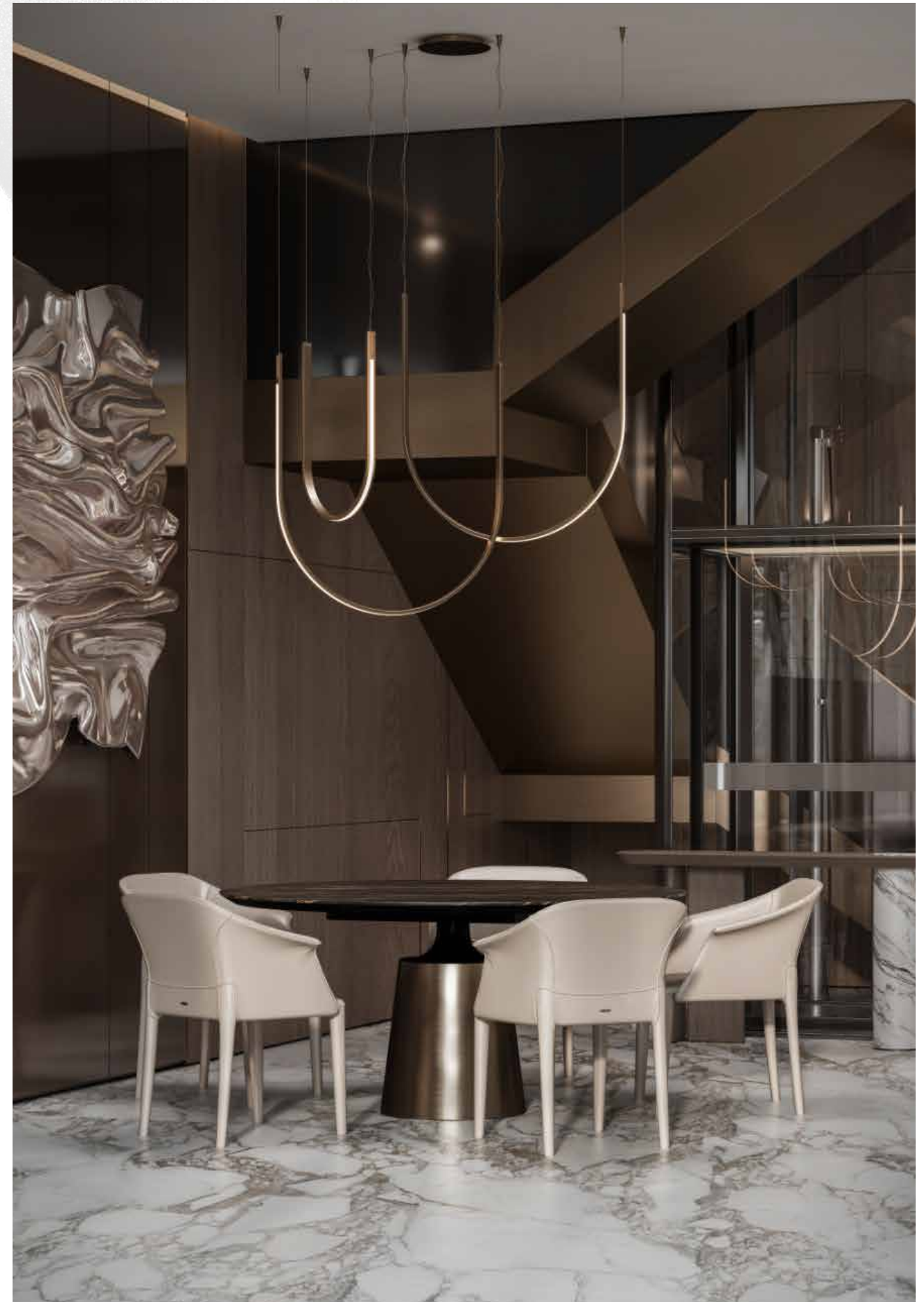


Named after the brightest star in the Auriga constellation, symbolising the luminous allure of twin stars.

LIVING ROOM



LIVING ROOM & DINING AREA





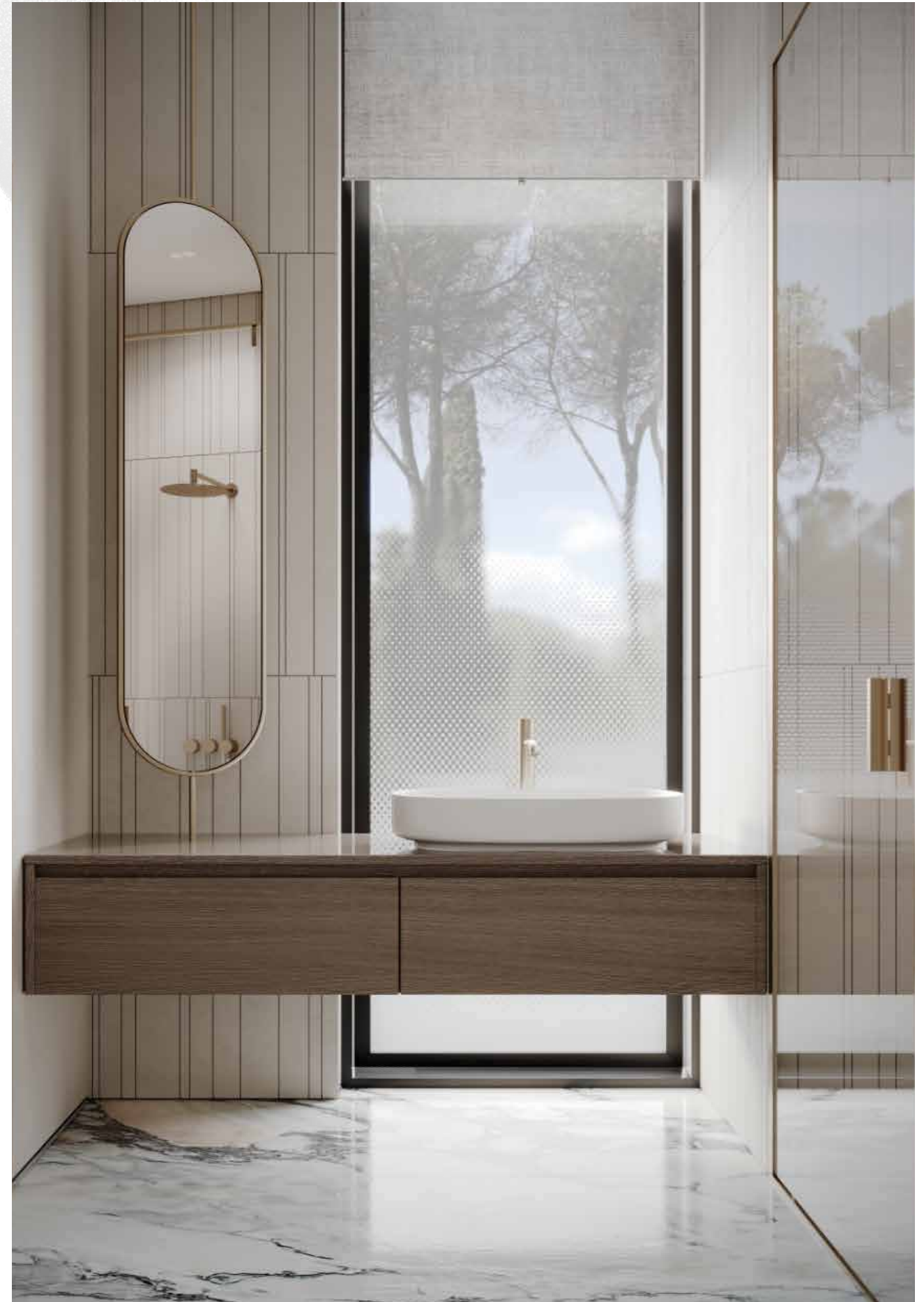
KITCHEN



BEDROOM



BATHROOMS



# FLOORPLANS

TWIN VILLA - 4 BEDROOM | 3,336.6 sq.ft



GROUND FLOOR



FIRST FLOOR



SECOND FLOOR



ROOFTOP

TWIN VILLA - 4 BEDROOM | 3,437.05 sq.ft



GROUND FLOOR



FIRST FLOOR



SECOND FLOOR



ROOFTOP

# ARA VILLAS

5-BEDROOM TYPE A | 4,579.22 sq.ft | 2 UNITS | PRIVATE SWIMMING POOL, ELEVATOR AND LANDSCAPED GARDEN







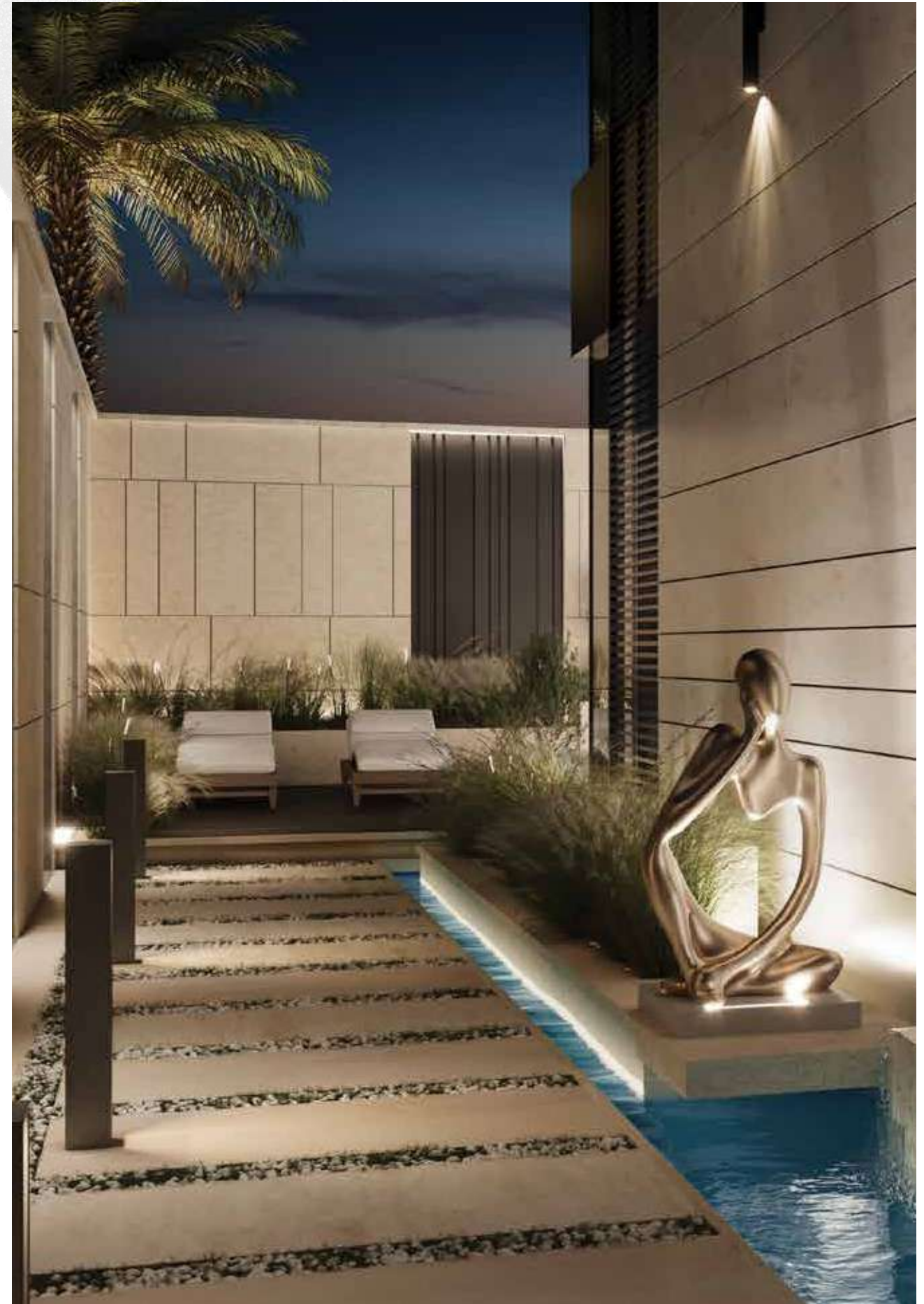


Inspired by the southern constellation Ara, it represents the essence of elegance in compact luxury.

PRIVATE PATIO

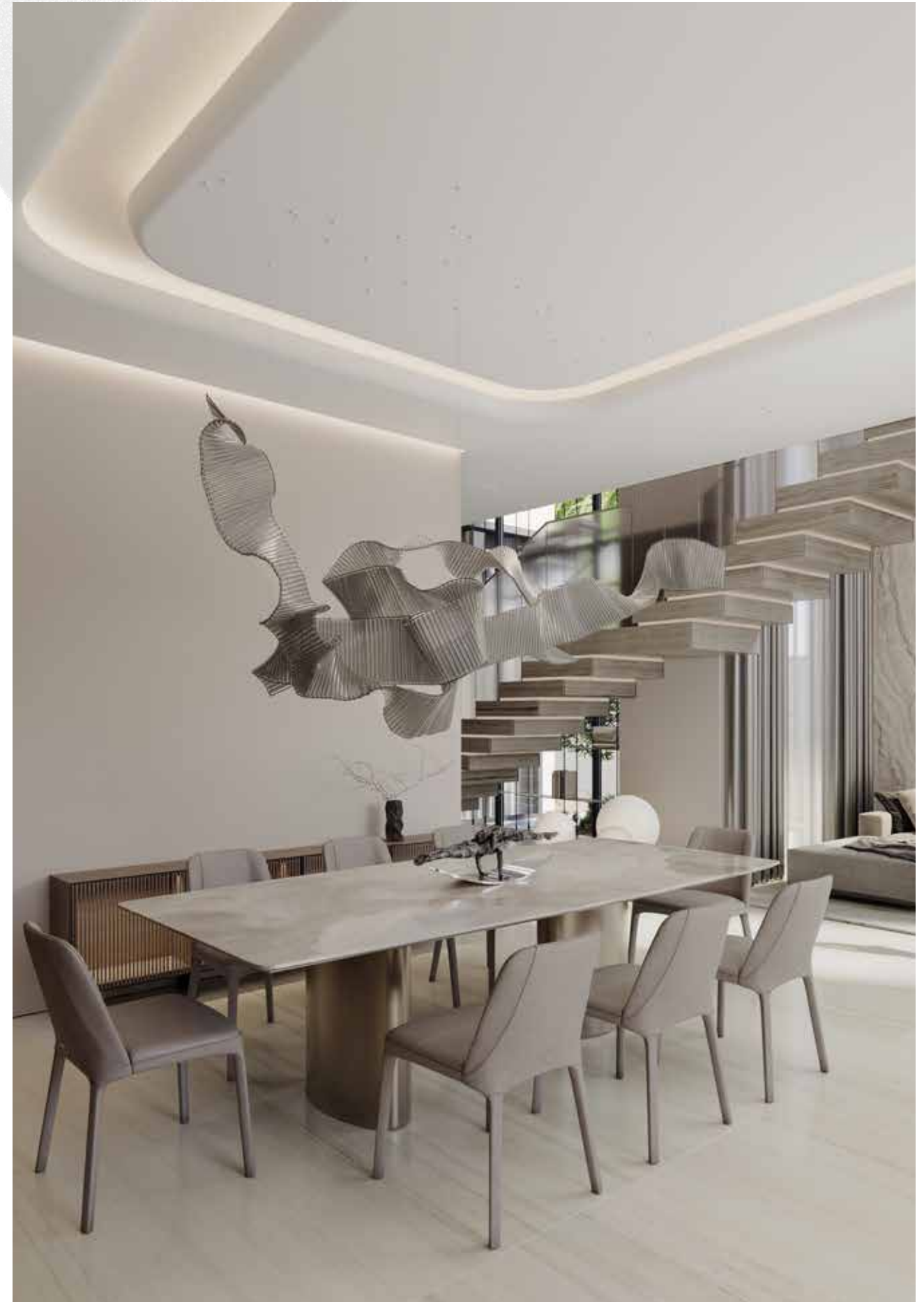


POOL DECK & TERRACE





LIVING ROOM & DINING AREA





KITCHEN



BEDROOM

# FLOORPLANS

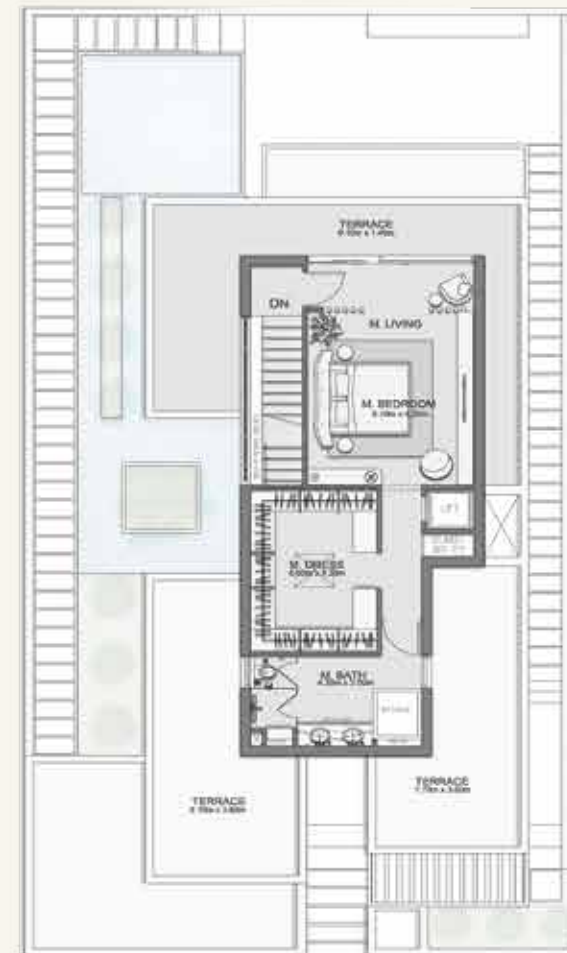
5-BEDROOM VILLA TYPE A | 4,579.22 sq.ft



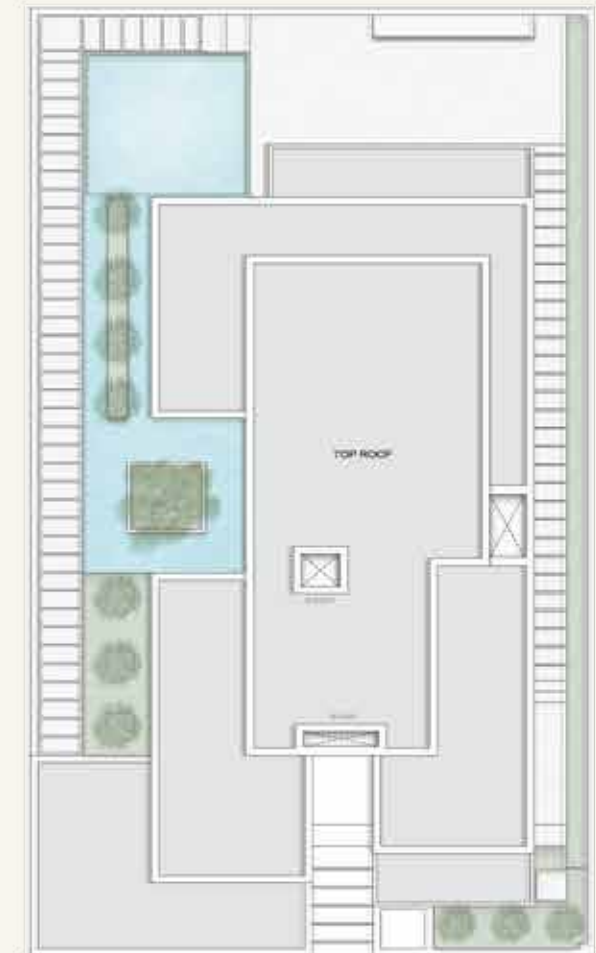
GROUND FLOOR



FIRST FLOOR



SECOND FLOOR



ROOFTOP

# LUNA VILLAS

5-BEDROOM TYPE B | 4,842.08 sq.ft | 9 UNITS | PRIVATE SWIMMING POOL, ELEVATOR AND LANDSCAPED GARDEN

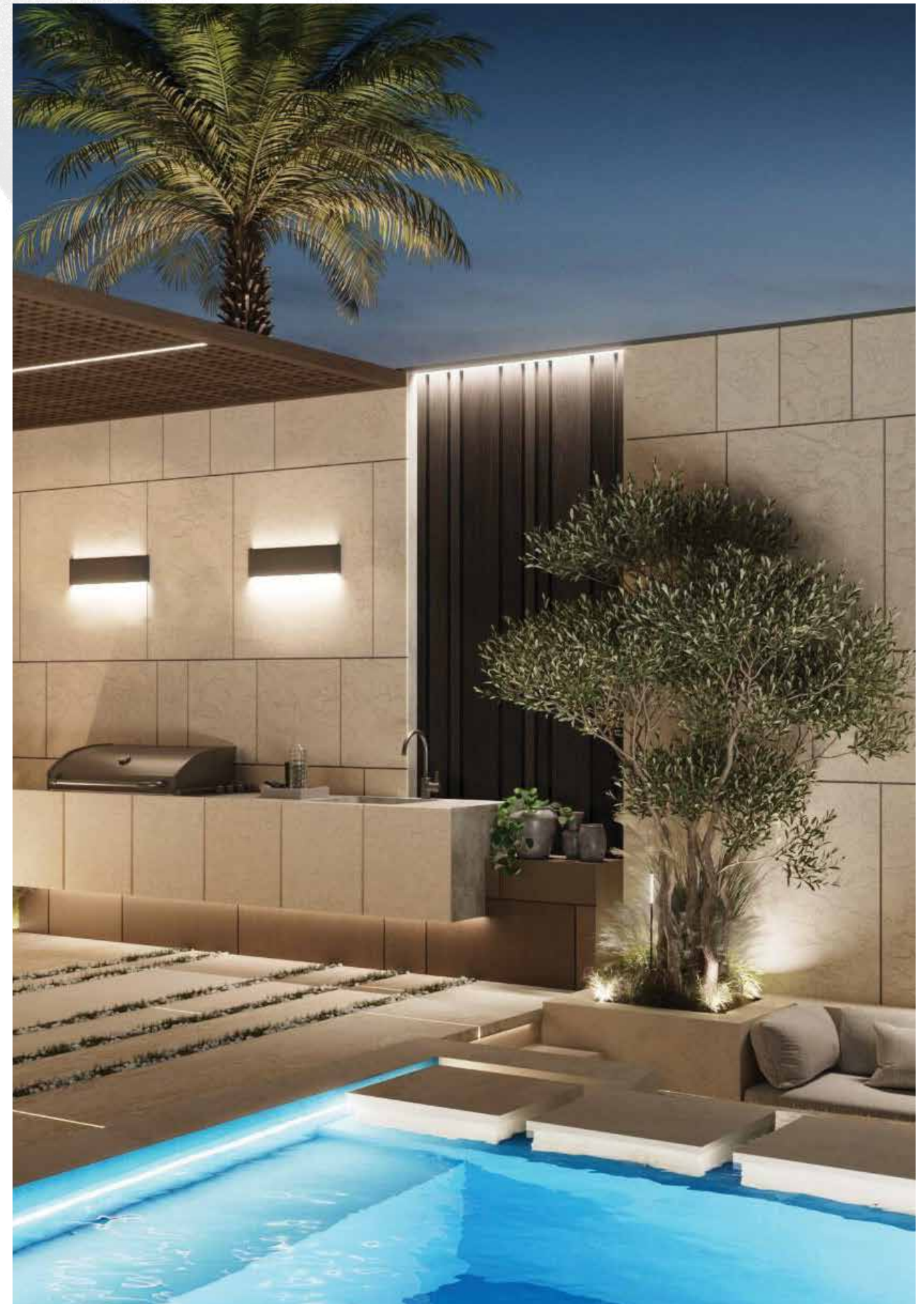








POOL DECK & BBQ TERRACE





Derived from the Latin word for the moon, it embodies tranquility, and a serene connection to the cosmos.

ENTRANCE HALL





DINING ROOM

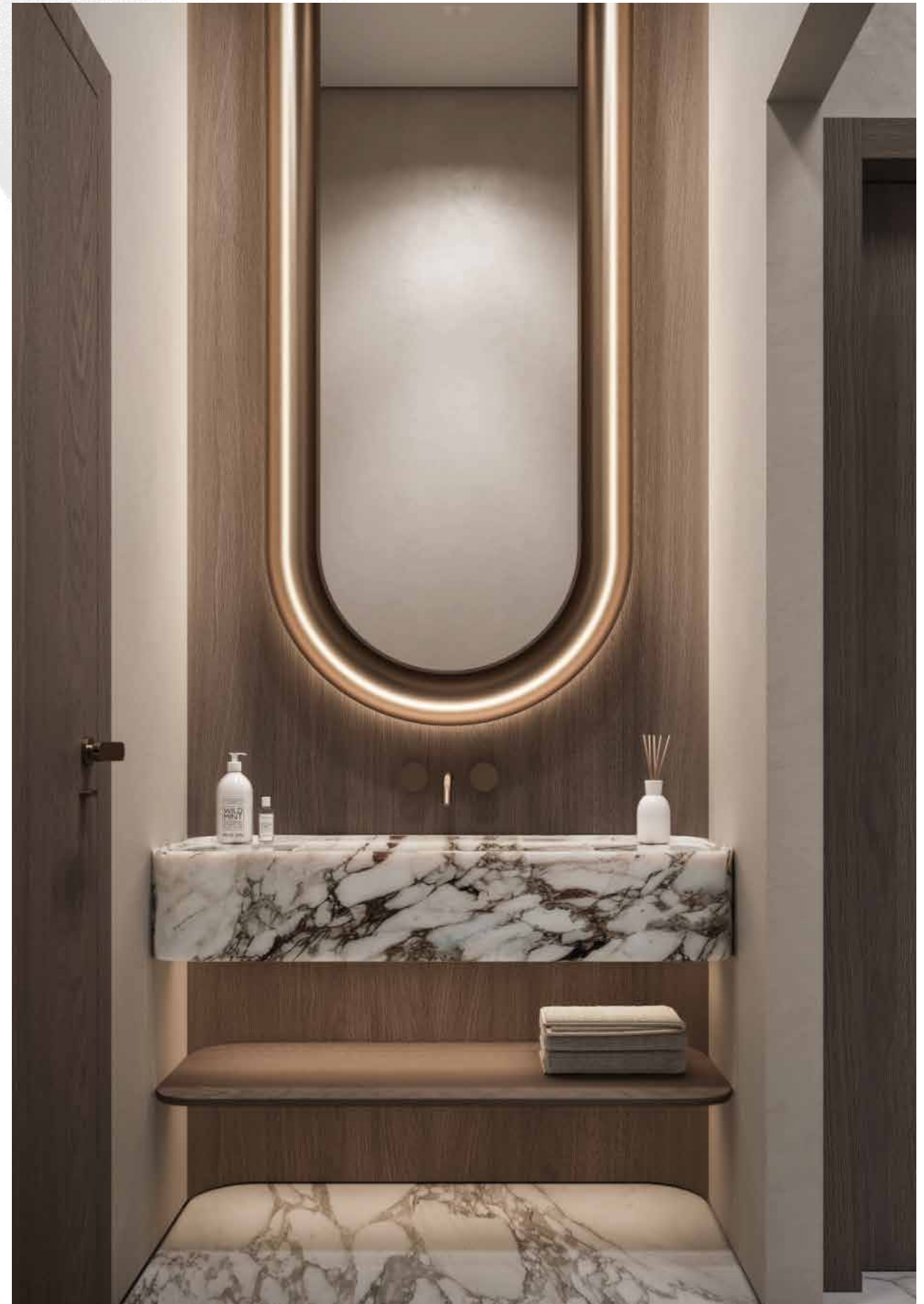




BEDROOM



WARDROBE & BATHROOM





# FLOORPLANS

5-BEDROOM VILLA TYPE B | 4,842.08 sq.ft



GROUND FLOOR



FIRST FLOOR



SECOND FLOOR



ROOFTOP

# POLARIS VILLAS

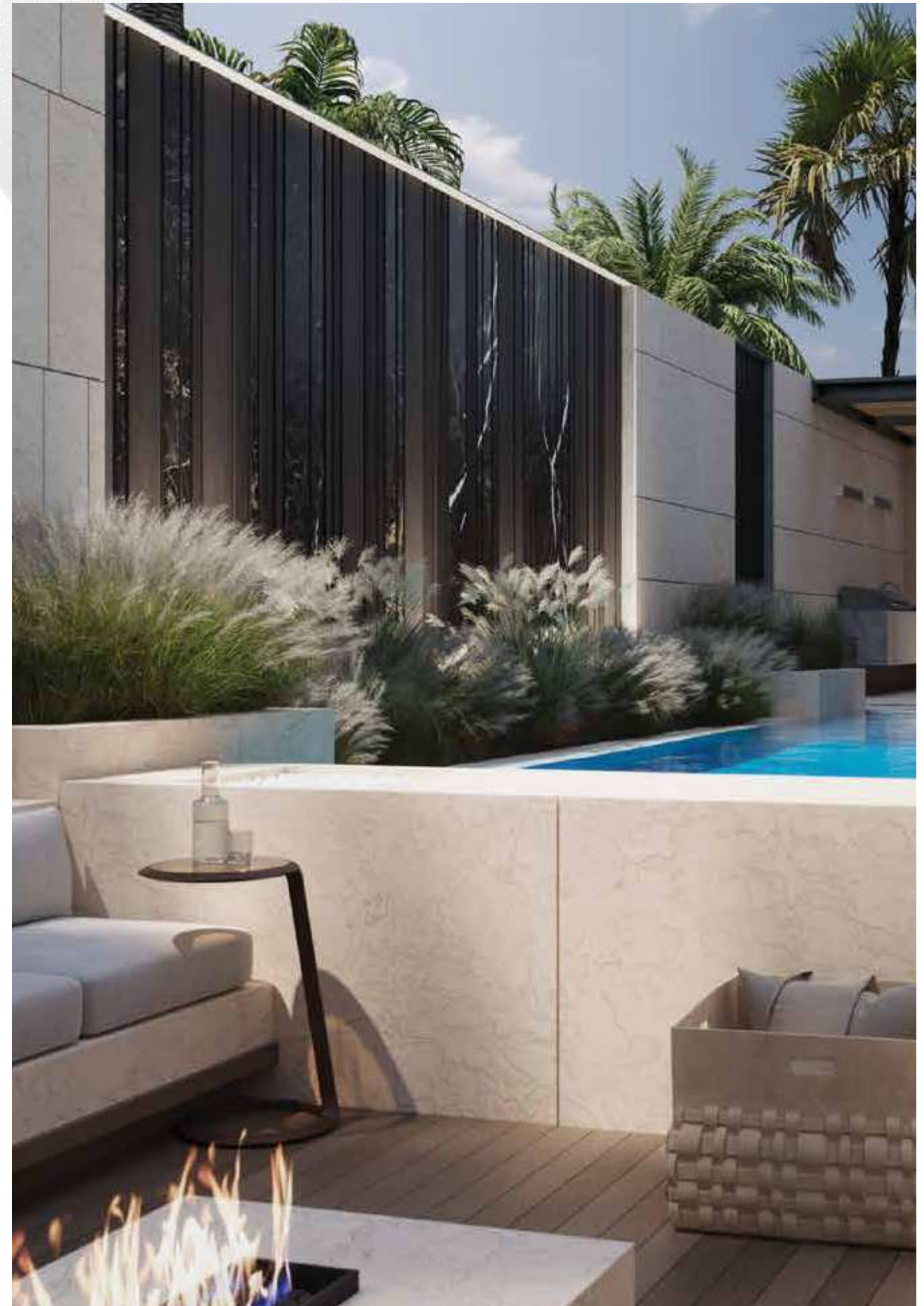
6-BEDROOM | 7,259.46 sq.ft | 3 UNITS | PRIVATE SWIMMING POOL, ELEVATOR AND LANDSCAPED GARDEN







POOL & SUNKEN LOUNGE





LIVING ROOM & LOUNGE





Named after the North Star, known for its steadfast position, it guides towards grandeur and magnificence.

LIVING ROOM



DINING ROOM

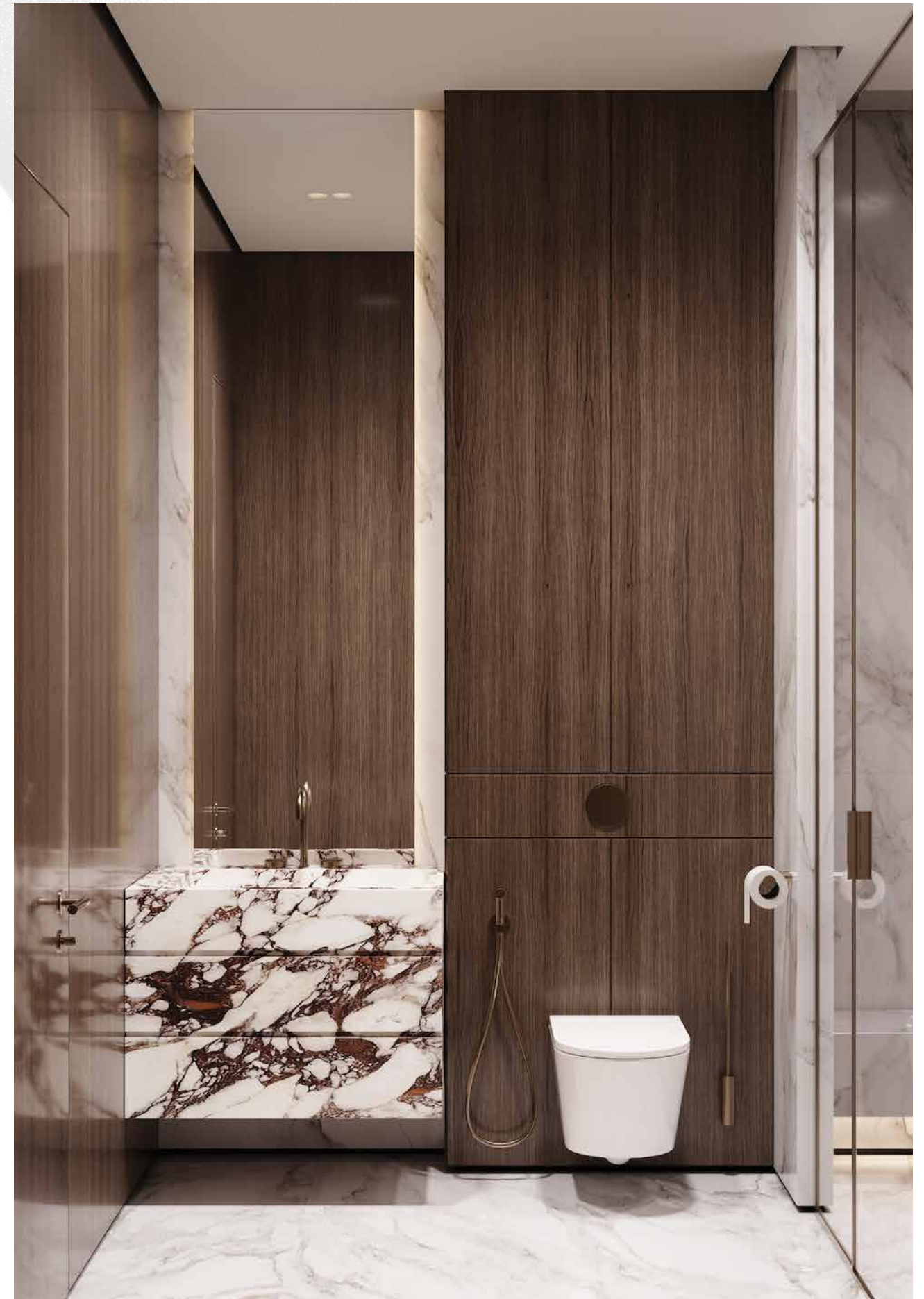


BEDROOM





WARDROBE



BATHROOM

# FLOORPLANS

6-BEDROOM VILLA | 7,259.46 sq.ft



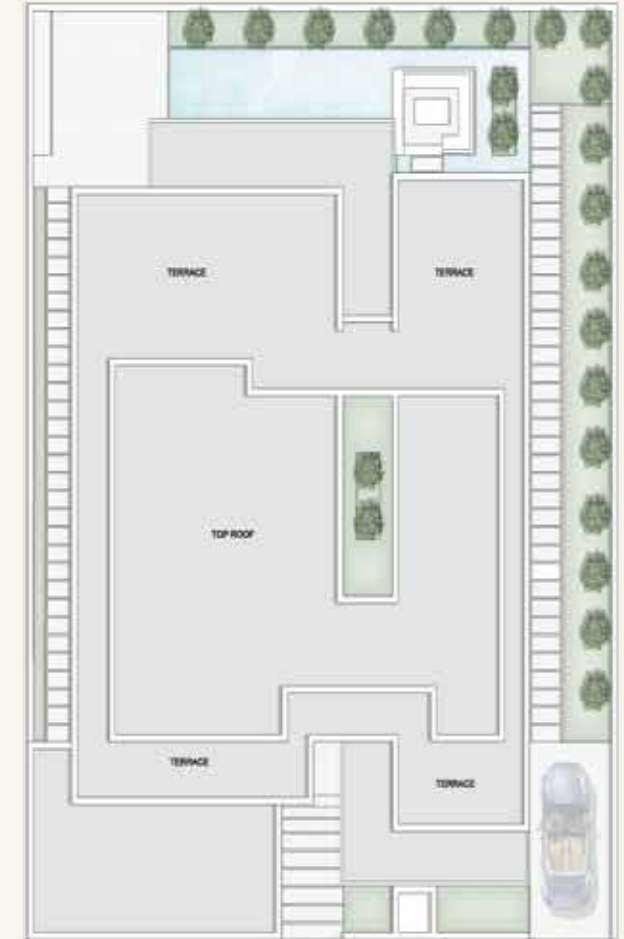
GROUND FLOOR



FIRST FLOOR



SECOND FLOOR



ROOFTOP



# THE ATMOSPHERE



## FACILITATING A PRESTIGIOUS COMMUNITY

Lua Residences goes beyond amenities – they create unique, calming experiences for everyone in your family. Cycling tracks, sprawling lawns, play and fitness areas, all complemented by the crystal lagoon, come together to create the perfect setting for a healthy and active lifestyle in beautiful surroundings.

Whether it's socialising with loved ones, making new friends, or having fun together, Lua Residences offers something for all ages. This is your happy place, where families can create lasting memories.



BATHROOM



# UNWIND BY THE WATER'S EDGE



SWIMMABLE CRYSTAL LAGOON



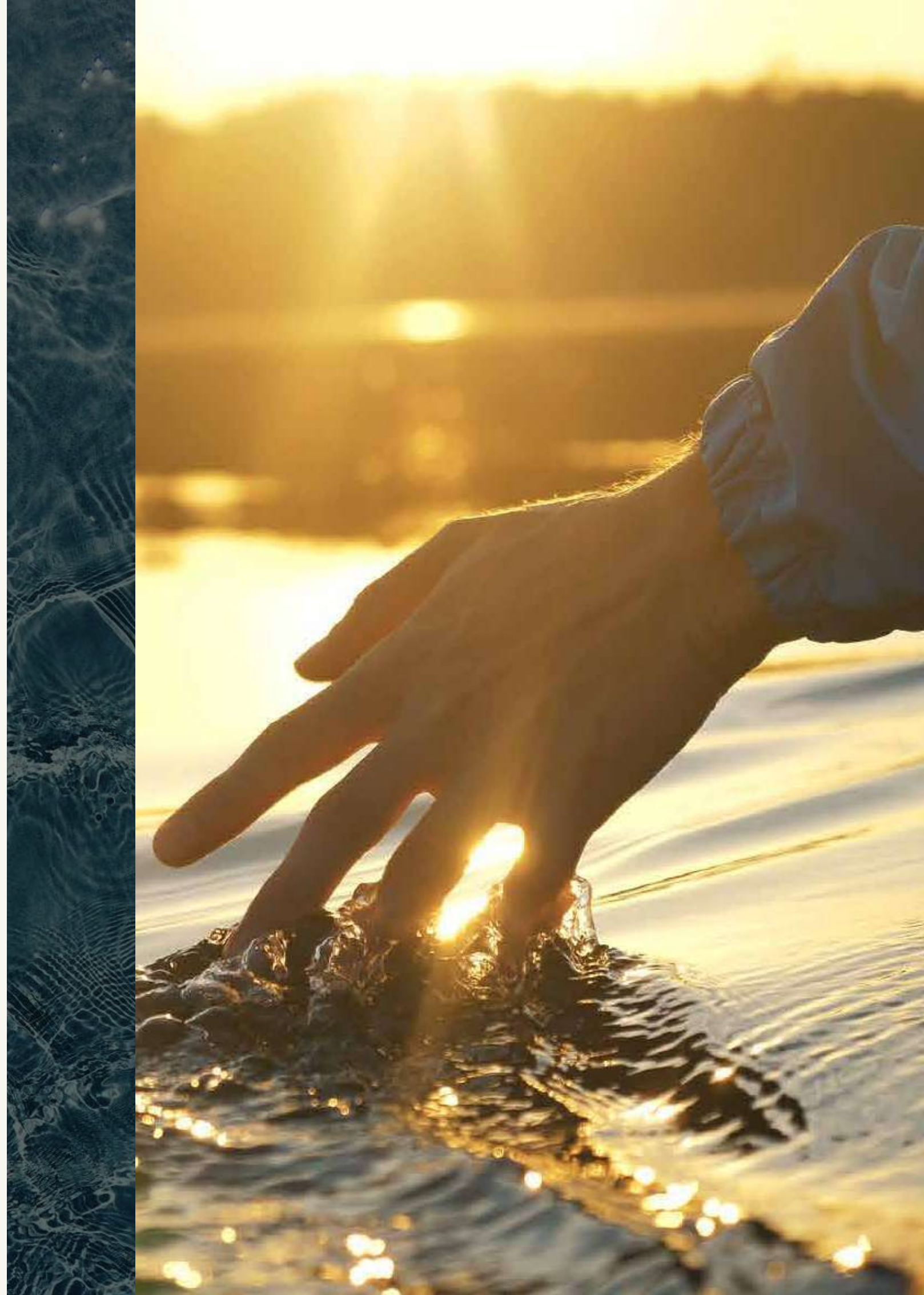
WATERSIDE WALKING / RUNNING TRACK



CANOEING / KAYAKING



SANDY BEACHES





## WELLNESS & LEISURE



WALKING AND CYCLING TRAILS



RECREATIONAL AMENITIES



COMMUNITY CLUBHOUSE



OUTDOOR GYM AND SPORTS COURTS



CHILDREN'S PLAY AREAS



COMMUNITY GARDENS



LUSH LANDSCAPED AREAS



MULTI-FUNCTIONAL DECK





# THE LUMINARY



ARTISANS OF EXCEPTIONAL

Swank Development, hailing from Portugal, is an esteemed European real estate developer. We bring together a wealth of experience from various sectors, including construction, design, and furniture, contributing to a holistic approach that sets us apart.

Dedicated to encapsulating the essence and heritage of Europe, we embark on a mission to seamlessly infuse the vibrant traditions, warm hospitality, and the pure joy of living characteristic of Portuguese culture into our projects in the UAE, creating a unique and sophisticated living experience for our discerning customers.

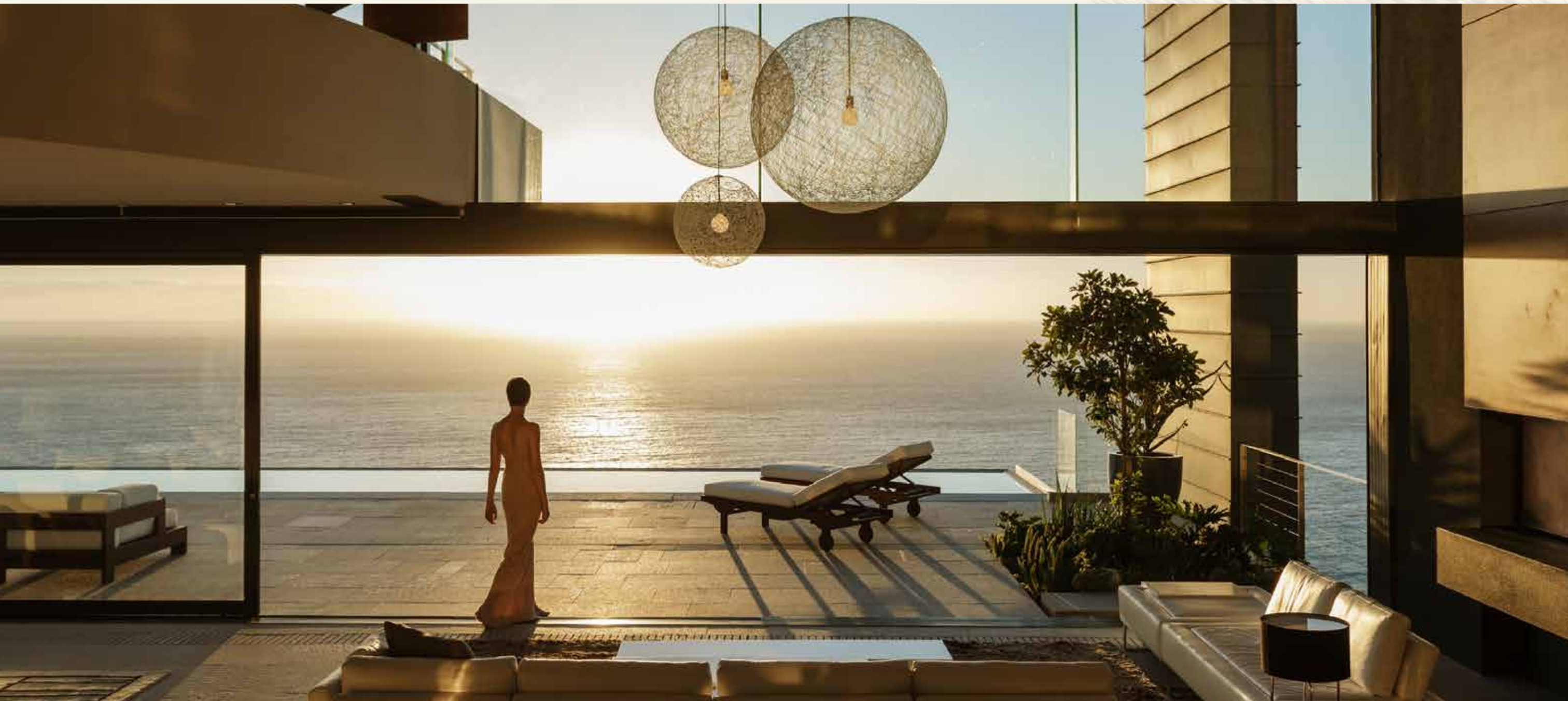
More than developers; we're artisans of style, curators of exceptional experiences, and makers of bespoke lifestyles.

"At Swank Development, beyond construction, we are all about crafting experiences and creating lifestyles. Every detail reflects our commitment to excellence. Each Swank creation is a testament to the collaboration of artisans, architects, and innovators who pour their heart and soul into every project. Their dedication and creativity transform our designs from concepts into tangible homes and dreams into living realities.

We welcome you to the world of Swank—a realm where design, dedication, and dreams converge beautifully in a harmonious blend."

**Moustafa Elsaid**

**Managing Director and Board Member**



# SWANK

DEVELOPMENT

**Head Office:**

Festival Tower, Suite 2005,  
Dubai Festival City,  
Dubai, UAE

**Contact:**

[info@swankdevelopment.com](mailto:info@swankdevelopment.com)  
[swankdevelopment.com](http://swankdevelopment.com)  
800 SWANK (79265)

Disclaimer: Whilst every care has been taken to ensure accuracy in the preparation of the information contained herein, no warranties whatsoever are given or legal representation provided in respect thereon. The developer reserves the right to modify information of the development or any part thereof as may be approved or required by the relevant authorities.