



madinat
jumeirah
living

Dubai's most
prestigious freehold
neighbourhood


DUBAI
HOLDING

Dubai

A dynamic city

This dynamic city is one of the most exciting and attractive investment arenas in the world. Today, the name Dubai is synonymous with international trade, innovation, tourism, retail and world-class business communities. It is also, simultaneously, an aspirational living destination for millions of expatriates and a geographic gateway, where thousands of international companies have set up regional headquarters.



A close-up, high-resolution photograph of an eagle's eye. The eye is the central focus, showing a dark, reflective pupil and a brown iris. The surrounding feathers are detailed, with some showing a mix of brown and white. The lighting is soft, highlighting the texture of the feathers and the sharpness of the eye.

Dubai Holding

For the good of tomorrow

Dubai Holding is a global conglomerate with an impressive history of development that plays a pivotal role in Dubai's fast-paced economy. Established in 2004 to focus on innovation-led opportunities, Dubai Holding today manages a USD 35 billion portfolio of assets with operations in 12 countries and employs over 20,000 people.

Madinat Jumeirah

The authenticity of ancient Arabia

Set on its own private beach, Madinat Jumeirah Resort is internationally renowned for its unique setting amongst meandering waterways, a winning blend of old-world charm and Jumeirah-style hospitality.

5 Star Hotels
nearby including
Burj Al Arab

50 Restaurants &
Entertainment
activities

1000 seat amphitheatre,
Madinat Arena

3+ kilometres of
waterways and
landscaped gardens

madinat jumeirah living

An exclusive address overlooking Burj Al Arab Jumeirah, the most luxurious hotel in the world.

Madinat Jumeirah Living is an exclusive collection of freehold residences located just opposite the Icon of Luxury – Burj Al Arab Jumeirah. Nestled amongst lush, vibrant landscapes and wadis, wind towers and wide shaded walkways offer a pleasant pedestrian journey of discovery. Serene open spaces provide areas for active & relaxed recreation while interconnected human scale pathways lead residents on a journey of discovery and surprises at every corner.

This pedestrian centric, environmentally friendly development has been designed with safety at its heart, limiting car access to designated drop off areas, basement and visitor parking.





Connectivity

There are ample ground level drop-off areas with separate access for residents and visitors. Its central location provides ease of connectivity through well-established road networks to the rest of the city: Sheikh Zayed Road, Jumeirah Road, Al Wasl Road, Umm Suqeim road all within just a 5 minute drive. It is also adjacent to major shopping malls, public transport links and schools at its doorstep.

- 2** minute drive
- Sheikh Zayed Road
- 5** minute drive
- Dubai Media City
- 8** minute drive
- Dubai Internet City
- 5** minute drive
- the nearest shopping mall
- 25** minute drive
- Dubai International Airport

NIKKI BEACH
RESIDENCES
Dubai

PORT
of the
MER

BVLGARI
RESORT & RESIDENCES
DUBAI

CITY
WALK

DUBAI
HOLDING

Dubai Creek
Harbour



MJ
madinat
jumeirah
living

SHEIKH ZAYED ROAD

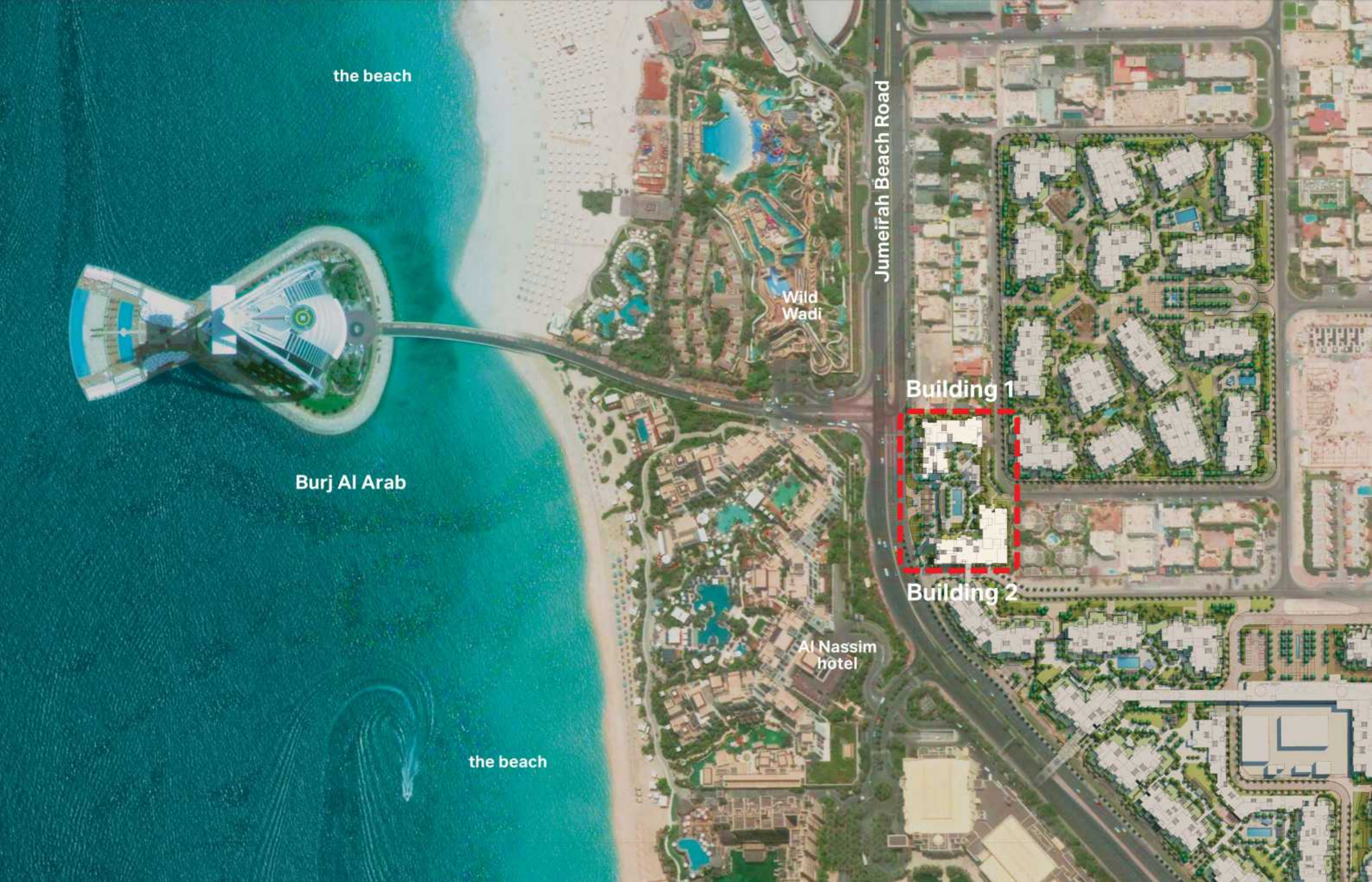
AL KHAIL ROAD

EMIRATES ROAD

Dubai
Harbour

ZABEEL SARAY
ROYAL RESIDENCE

BLUE
WATERS



the beach

Burj Al Arab

the beach

Wild Wadi

Jumeirah Beach Road

Building 1

Building 2

Al Nassim hotel

Environment

An unparalleled oasis
on a pathway of discovery

A central pedestrian walkway meanders through Madinat Jumeirah Living, providing access to private community entrances. Communal roof terraces with BBQ areas also offer magnificent views of Madinat Jumeirah, Burj Al Arab and the sea, while facilities include:

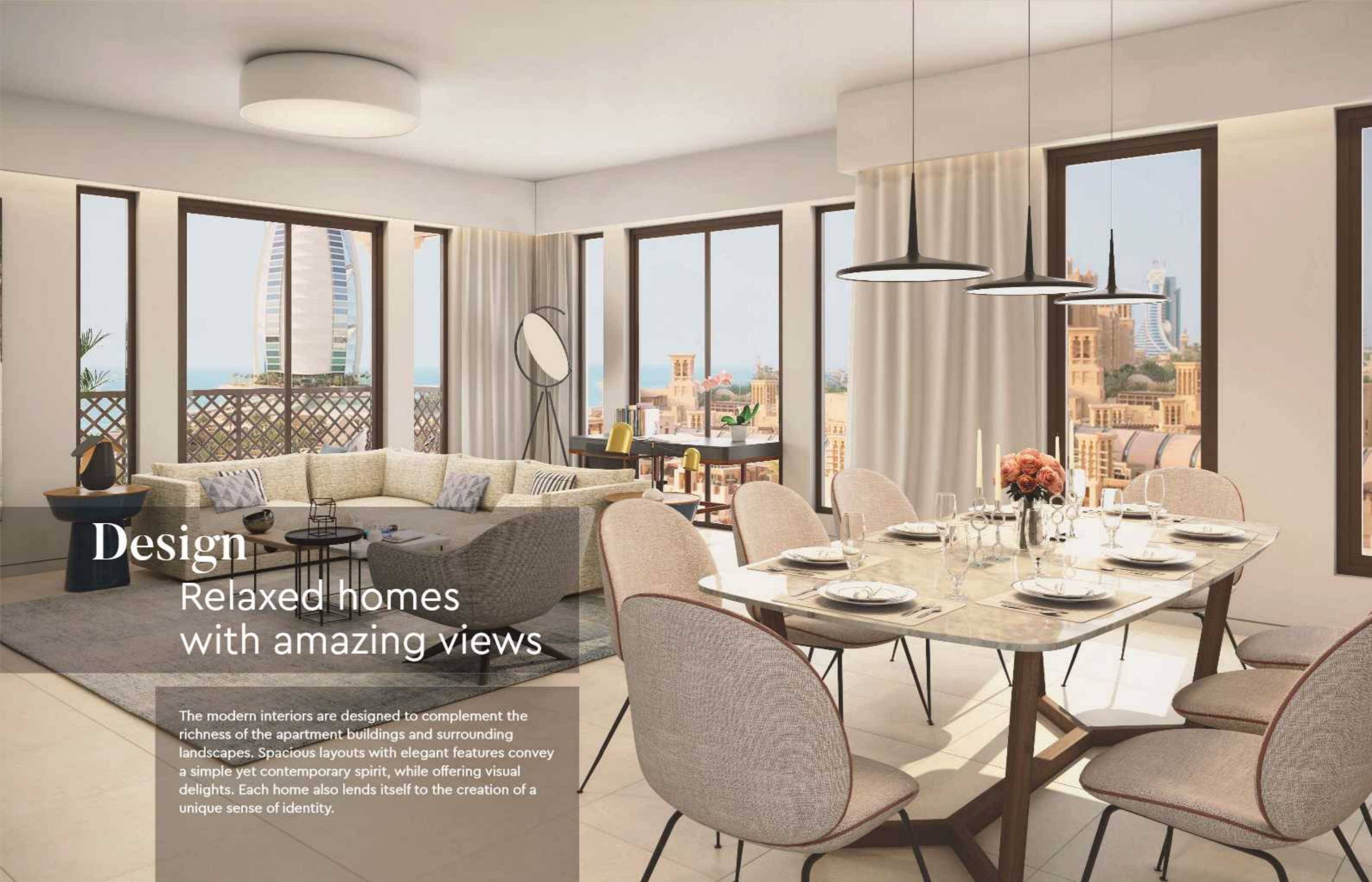
- Gated residential clusters
- Community centre
- Community retail
- Suite of concierge services
- Play areas, parks and open spaces
- Fitness Centres and Swimming pools
- Ample basement parking for residents
- Designated visitor parking
- Day care centres
- Direct airconditioned footbridge connected to Madinat Jumeirah Resort
- Kilometres of shaded walkways, jogging and cycling paths

The image shows a large, multi-story residential building with a modern, minimalist design. The building features light-colored facades, numerous windows, and balconies with wooden railings. In the foreground, there is a paved courtyard area with several palm trees and other greenery. People are seen walking and cycling in the courtyard, suggesting a vibrant community. The sky is clear and blue, indicating a bright day.

Residences

A distinctive collection
of contemporary apartments

The tranquil residences consist of tastefully appointed and spacious apartment buildings with fresh contemporary interiors and exquisitely designed lobby lounges.



Design

Relaxed homes with amazing views

The modern interiors are designed to complement the richness of the apartment buildings and surrounding landscapes. Spacious layouts with elegant features convey a simple yet contemporary spirit, while offering visual delights. Each home also lends itself to the creation of a unique sense of identity.







DUBAI
HOLDING