

LAUNCHING

# SEAGULL POINT

WATER HAS A NEW FRONT



MOHAMMED BIN RASHID  
AL MAKTOUM CITY

DISTRICT ONE





---

We are delighted to announce the launch of an elegant new tower at District One, with exclusive amenities.

Featuring 1, 2 and 3 bedroom apartments with views of the iconic Crystal Lagoon, this tower is a vibrant addition to Dubai's most prestigious community.

Register today for special pre-launch benefits.

---



# EXCLUSIVE AMENITIES



**FULLY  
FURNISHED  
APARTMENTS**





# CAFÉ

Friends flock together

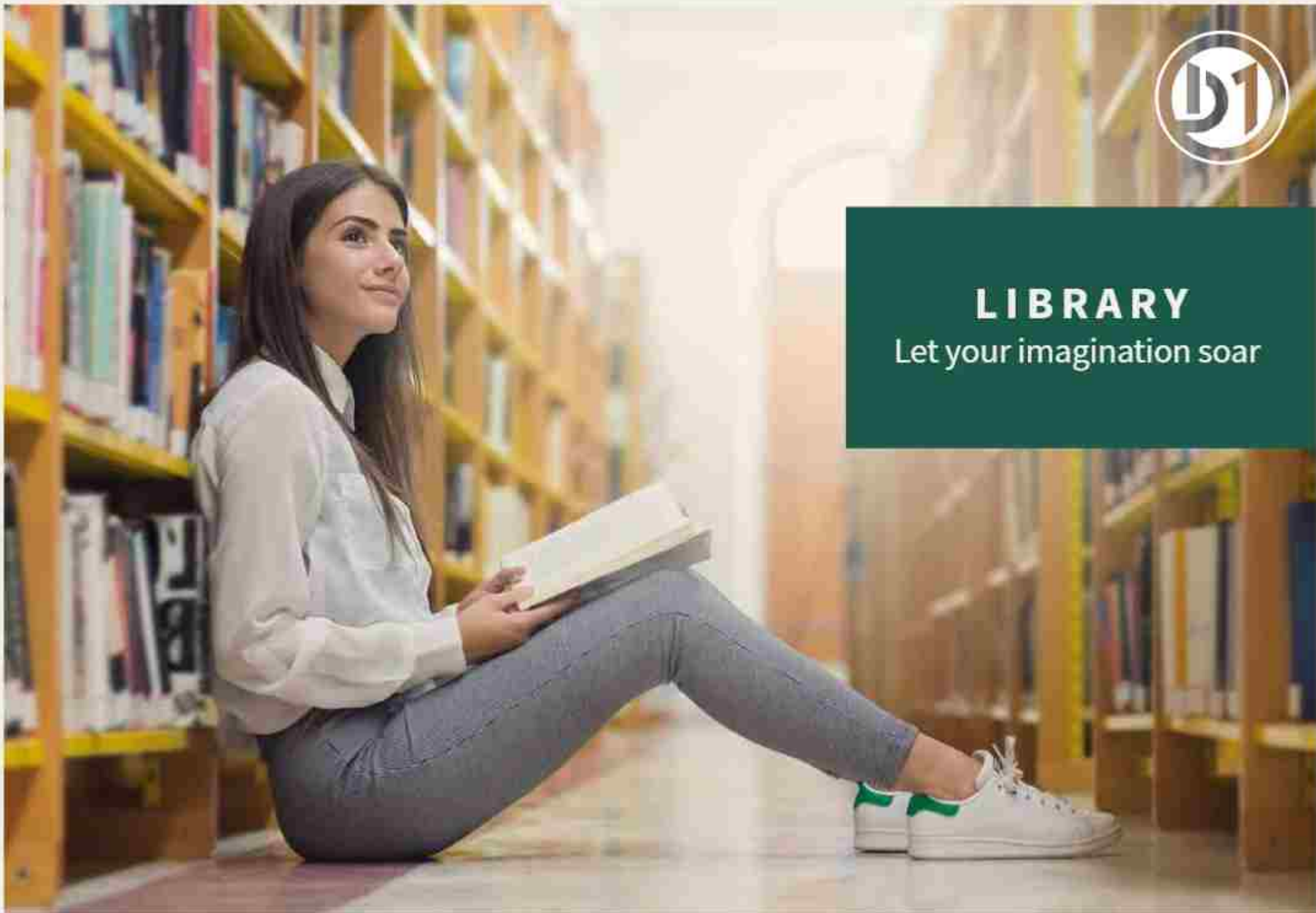






# LIBRARY

Let your imagination soar





# GYM

Believe you can fly







**KIDS PLAY AREA**  
Fun takes flight





# ICONIC LOCATION



**10** MINS  
BUSINESS BAY



**5** MINS  
THE MEYDAN HOTEL



**12** MINS  
DIFC



**15** MINS  
BURJ AL ARAB



**12** MINS  
WORLD TRADE CENTRE



**20** MINS  
INTERNATIONAL AIRPORT

# AMENITIES



**Bicycle Track**



**Jogging Track**



**Supermarket**



**Pharmacy**



**School**



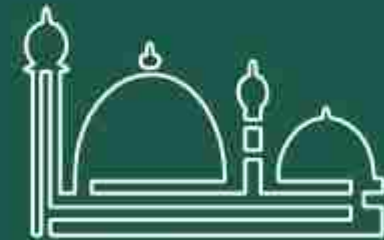
**Crystal Lagoon  
& Beachfront**



**Kids  
play area**



**Parks**



**Mosque**





**7KM**  
Crystal Lagoon



**8.4 KM**  
Cycling and Running Track







**60%**  
Green Cover













# MASTER PLAN



AL KHAIL ROAD

MEYDAN ONE

SALES CENTRE

7 KM CRYSTAL LAGOON

PHASE III RESIDENCES

8.4 KM CYCLING & RUNNING TRACK



# TOWER LOCATION MAP



**SEAGULL POINT**  
WATER HAS A NEW FRONT.

Disclaimer: The design, layout, dimensions, guidelines, visualizations, renderings, images and any other information as obtained herein is provided for illustrative purposes only and subject to change at any time at the sole discretion of the Developer.



# TOWER EXTERIOR



© 2020 D1. All rights reserved. The views, opinions, and information contained herein are for informational purposes only and do not constitute an offer of any financial product or service. Please consult your financial advisor for more information.



# TOWER EXTERIOR & VIEWS



# SEAGULL POINT TOWER 5TH TO 14TH FLOOR

## 1, 2 And 3 Bedroom Apartments



MEYDAN ONE

MEYDAN AVENUE

MEYDAN HOTEL



  3 BEDROOM  
   2 BEDROOM  
   1 BEDROOM



05-14



DISCLAIMER: All measurements, dimensions, coordinates and drawings given as the Floor Plans in this literature are approximate and provided only for the purpose of marketing, illustration, information and general guidance as such drawings are not to scale. All the rooms, areas, locations, orientations, dimensions, fixtures, fittings, finishes and specifications (including materials for placement, size of rooms, windows, doors, balconies, furniture's, inbuilt wardrobe etc.) provided in the floor plans may vary as the same have been taken from concept designs prior to the actual development/construction and therefore their accuracy in relation to actual construction cannot be confirmed. Hence, we make no guarantee, warranty or representation as to the accuracy and completeness of the Floor plan information as changes may be made during the development process, without notice. Always refer to latest IFC design available in the sales office for the most accurate representation of all construction details.



# SEAGULL POINT TOWER 4TH FLOOR

## 1, 2 And 3 Bedroom Apartments



MEYDAN ONE

DUBAI SKYLINE



MEYDAN HOTEL

- 2 BEDROOM
- 2 BEDROOM
- 1 BEDROOM



DISCLAIMER: All measurements, dimensions, coordinates and drawings given as the Floor Plans in this literature are approximate and provided only for the purpose of marketing, illustration, information and general guidance as such drawings are not to scale. All the rooms, sizes, locations, elevations, dimensions, fixtures, fittings, finishes and specifications (including materials for placement, size of rooms, windows, doors, ceilings, furniture, inbuilt wardrobe etc.) provided in the floor plans may vary as the same have been taken from concept designs prior to the actual development/construction and therefore their accuracy in relation to actual construction cannot be confirmed. Hence, we make no guarantee, warranty or representation as to the accuracy and completeness of the Floor plan information so changes may be made during the development process, without notice. Always refer to latest IFC design available in the sales office for the most accurate representation of all construction details.

# SEAGULL POINT TOWER 2ND TO 3RD FLOOR

## 1, 2 And 3 Bedroom Apartments



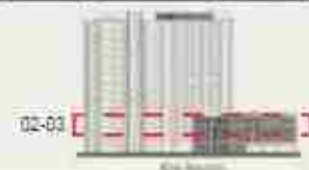
MEYDAN ONE

POULINA SKYLINE

MEYDAN HOTEL



 3 BEDROOM  2 BEDROOM  1 BEDROOM



DISCLAIMER: All measurements, dimensions, coordinates and drawings given as the Floor Plan in this literature are approximate and provided only for the purpose of marketing, illustration, information and general guidance as such drawings are not to scale. All the rooms, sizes, locations, orientations, dimensions, fixtures, fittings, finishes and specifications (including materials for placement, size of rooms, windows, doors, balconies, furniture's, inbuilt appliances etc.) provided in the floor plan may vary as the same have been taken from concept designs prior to the actual development/construction and therefore their accuracy in relation to actual construction cannot be confirmed. Hence, we make no guarantee, warranty or representation as to the accuracy and completeness of the Floor plan information as changes may be made during the development process, without notice. Always refer to latest IFC design available in the sales office for the most accurate representation of all construction details.



# SEAGULL POINT TOWER 1ST FLOOR

## 1, 2 And 3 Bedroom Apartments



MEYDAN ONE

DUBAI SKYLINE

MEYDAN HOTEL



 3 BEDROOM  2 BEDROOM  1 BEDROOM



DISCLAIMER: All measurements, dimensions, coordinates and drawings given as the Floor Plan in this literature are approximate and provided only for the purpose of marketing, illustration, information and general guidance as such drawings are not to scale. All the rooms, area locations, orientations, dimensions, fixtures, fittings, finishes and specifications (including materials for pavement, size of rooms, windows, doors, balconies, furniture's, inbuilt wardrobes etc.) provided in the floor plans may vary as the same have been taken from concept designs prior to the actual development/construction and therefore their accuracy in relation to actual construction cannot be confirmed. Hence, we make no guarantee, warranty or representation as to the accuracy and completeness of the Floor plan information as changes may be made during the development process, without notice. Always refer to latest IFC design available in the sales office for the most accurate representation of all construction details.



## 3 BEDROOM

### 1ST TO 14TH FLOORS

Suite Area:	1,515 - 1,531 Sqft
Balcony Area:	129 Sqft
Total Area:	1,644 - 1,660 Sqft



G+14  
KEY PLAN

DISCLAIMER: All measurements, dimensions, coordinates and drawings given in this literature are approximate and provided only for the purpose of marketing, illustration, information and general guidance as such drawings are not to scale. All the rooms, areas locations, orientations, dimensions, fixtures, fittings, finishes and specifications (including materials for placement, size of rooms, windows, doors, balcony, furniture's, inbuilt wardrobe etc.) provided in the floor plans may vary as the same have been taken from concept designs prior to the actual development/construction and therefore their accuracy in relation to actual construction cannot be confirmed. Hence, we make no guarantee, warranty or representation as to the equity and completeness of the floor plan information as changes may be made during the development process, without notice. Always refer to latest FC design available in the sales office for the most accurate representation of all construction details.





## 2 BEDROOM

### 1ST TO 14TH FLOORS

Suite Area:	977 - 1,108 Sqft
Balcony Area:	68 - 71 Sqft
Total Area:	1,045 - 1,179 Sqft



G+14  
KEY PLAN

DISCLAIMER: All measurements, dimensions, coordinates and drawings given as the Floor Plans in this literature are approximate and provided only for the purpose of indicating, illustration, information and general guidance as such drawings are not to scale. All the rooms, sizes, locations, orientations, dimensions, fixtures, fittings, finishes and specifications (including materials for placement, size of rooms, windows, doors, balconies, furniture, in-built wardrobe etc.) provided in the floor plans may vary at the same time have been taken from concept designs prior to the actual development/construction and therefore their accuracy in relation to actual construction cannot be confirmed. Hence, we make no guarantee, warranty or representation as to the accuracy and completeness of the Floor plan information as changes may be made during the development process, without notice. Always refer to latest FC design available in the sales office for the most accurate representation of all construction details.

# 2 BEDROOM



1ST TO 14TH FLOORS



G+14  
KEY PLAN

DISCLAIMER: All measurements, dimensions, conditions and drawings given as the Floor Plans in this literature are approximate and provided only for the purpose of indicating, illustration, information and general guidance as such drawings are not to scale. All the rooms, areas, locations, orientations, dimensions, fixtures, fittings, finishes and specifications (including materials for placement, size of rooms, windows, doors, balconies, furniture's, in-built wardrobe etc.) provided in the floor plans may vary as the same have been taken from concept designs prior to the actual development/construction and therefore their accuracy in relation to actual construction cannot be confirmed. Hence, we make no guarantee, warranty or representation as to the accuracy and completeness of the Floor plan information as changes may be made during the development process, without notice. Always refer to latest FC design available in the sales office for the most accurate representation of all construction details.



# 1 BEDROOM



## 1ST TO 14TH FLOORS

Suite Area:	607 - 612 Sqft
Balcony Area:	60 - 125 Sqft
Total Area:	668 - 737 Sqft



G+14  
KEY PLAN



DISCLAIMER: All measurements, dimensions, coordinates and drawings given in this literature are approximate and provided only for the purpose of indicating, illustration, information and general guidance as such drawings are not to scale. All the rooms, areas, locations, orientations, dimensions, fixtures, fittings, finishes and specifications (including materials for placement, size of rooms, windows, doors, balconies, furniture's, in-built appliances etc.) provided in the floor plans may vary as the same have been taken from concept designs prior to the actual development/construction and therefore their accuracy in relation to actual construction cannot be confirmed. Hence, we make no guarantee, warranty or representation as to the accuracy and completeness of the Floor plan information as changes may be made during the development process, without notice. Always refer to latest IFC design available in the sales office for the most accurate representation of all construction details.

# SEAGULL POINT TOWER GROUND FLOOR

## 1, 2 And 3 Bedroom Apartments



 2 BEDROOM  2 BEDROOM  1 BEDROOM



DISCLAIMER: All measurements, dimensions, coordinates and drawings given as the Floor Plans in this literature are approximate and provided only for the purpose of marketing, illustration, information and general guidance as such drawings are not to scale. All the rooms, sizes, locations, elevations, dimensions, fixtures, fittings, finishes and specifications (including materials for placement, size of rooms, windows, doors, balcony, furniture, inbuilt wardrobe etc.) provided in the floor plans may vary as the same have been taken from concept designs prior to the actual development/construction and therefore their accuracy in relation to actual construction cannot be confirmed. Hence, we make no guarantee, warranty or representation as to the accuracy and completeness of the Floor plan information as photos may be made during the development process, without notice. Always refer to latest IFC design available in the sales office for the most accurate representation of all construction details.





## 3 BEDROOM

### GROUND FLOOR

Suite Area:	1,515 - 1,532 Sqft.
Balcony Area:	1,029 - 1,030 Sqft.
Total Area:	2,544 - 2,562 Sqft.



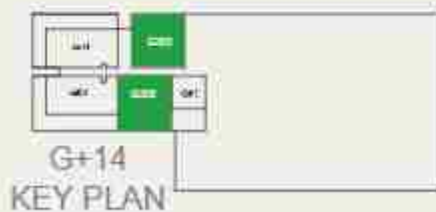
DISCLAIMER: All measurements, dimensions, coordinates and drawings given as the Floor Plans in this literature are approximate and provided only for the purpose of indicating, illustration, information and general guidance as such drawings are not to scale. All the rooms, areas, locations, orientations, dimensions, fixtures, fittings, finishes and specifications (including materials for placement, size of rooms, windows, doors, balconies, furniture's, in-built appliances etc.) provided in the floor plans may vary as the same have been taken from concept designs prior to the actual development/construction and therefore their accuracy in relation to actual construction cannot be confirmed. Hence, we make no guarantee, warranty or representation as to the accuracy and completeness of the Floor plan information as changes may be made during the development process, without notice. Always refer to latest FC design available in the sales office for the most accurate representation of all construction details.



## 2 BEDROOM

### GROUND FLOOR

Suite Area:	1,104 - 1,108 Sqft
Balcony Area:	447 - 457 Sqft
Total Area:	1,551 - 1,565 Sqft



DISCLAIMER: All measurements, dimensions, coordinates and drawings given as the Floor Plan in this literature are approximate and provided only for the purpose of indicating, illustration, information and general guidance as such drawings are not to scale. All the rooms, sizes, locations, orientations, dimensions, fixtures, fittings, finishes and specifications (including materials for placement, size of rooms, windows, doors, balconies, furniture, in-built wardrobe etc.) provided in the floor plans may vary as the same have been taken from concept designs prior to the actual development/construction and therefore their accuracy in relation to actual construction cannot be confirmed. Hence, we make no guarantee, warranty or representation as to the accuracy and completeness of the Floor plan information as changes may be made during the development process, without notice. Always refer to latest FC design available in the sales office for the most accurate representation of all construction details.





# 1 BEDROOM

## GROUND FLOOR

Suite Area:	611 sq.ft
Terrace Area:	443 sq.ft
Total Area:	1054 sq.ft



DISCLAIMER: All measurements, dimensions, coordinates and drawings given as the Floor Plans in this literature are approximate and provided only for the purpose of marketing, illustration, information and general guidance as such drawings are not to scale. All the rooms, sizes, locations, orientations, dimensions, fixtures, fittings, finishes and specifications (including materials for placement, size of rooms, windows, doors, balconies, furniture, in-built wardrobe etc.) provided in the floor plans may vary as the same have been taken from concept designs prior to the actual development/construction and therefore their accuracy in relation to actual construction cannot be confirmed. Hence, we make no guarantee, warranty or representation as to the accuracy and completeness of the Floor plan information as changes may be made during the development process. without notice. Always refer to latest IFC design available in the sales office for the most accurate representation of all construction details.

# PAYMENT PLAN

BOOKING AMOUNT\*

10%

Upon  
Booking\*

1ST INSTALMENT\*

5%

30-OCT-2019

2ND INSTALMENT\*

5%

10%  
Construction  
30-MAR-2020

3RD INSTALMENT\*

5%

20%  
Construction  
30-JUN-2020

4TH INSTALMENT\*

5%

30%  
Construction  
30-SEP-2020

5TH INSTALMENT\*

10%

40%  
Construction  
30-DEC-2020

6TH INSTALMENT\*

10%

50%  
Construction  
28-FEB-2021

FINAL INSTALMENT\*

50%

On  
Completion  
31-DEC-2021





## **CONTACT US**

**Toll Free : 800 37373**

**Hotline : +971 52 754 3244**

**Email: [sales@drehomes.com](mailto:sales@drehomes.com)**

**Visit Us For More Info:-**

**<https://drehomes.com/property/meydan-district-1-seagull-point/>**