



SOBHA ONE

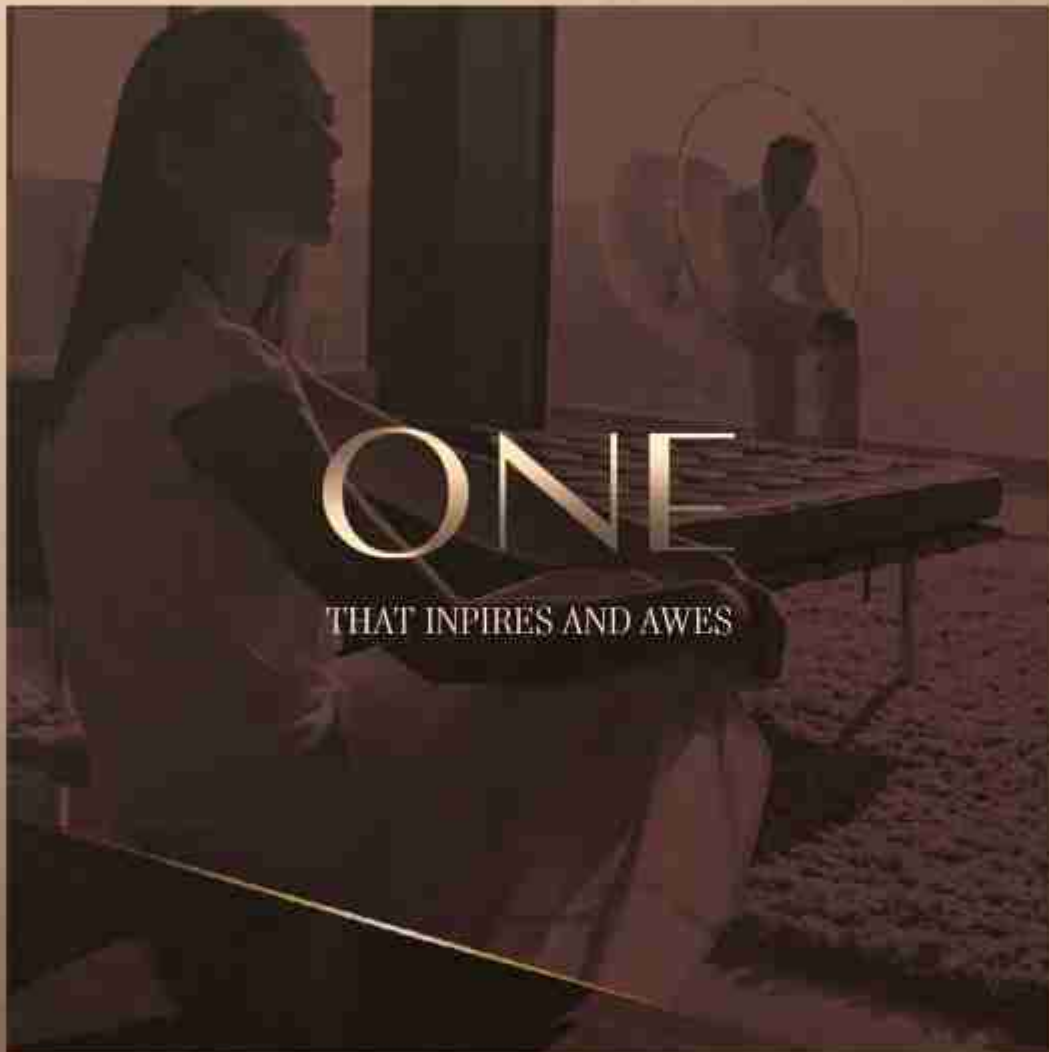
SOBHA
REALTY



ONE

THE JOURNEY BEGINS

ONE that brings you
closer to nature



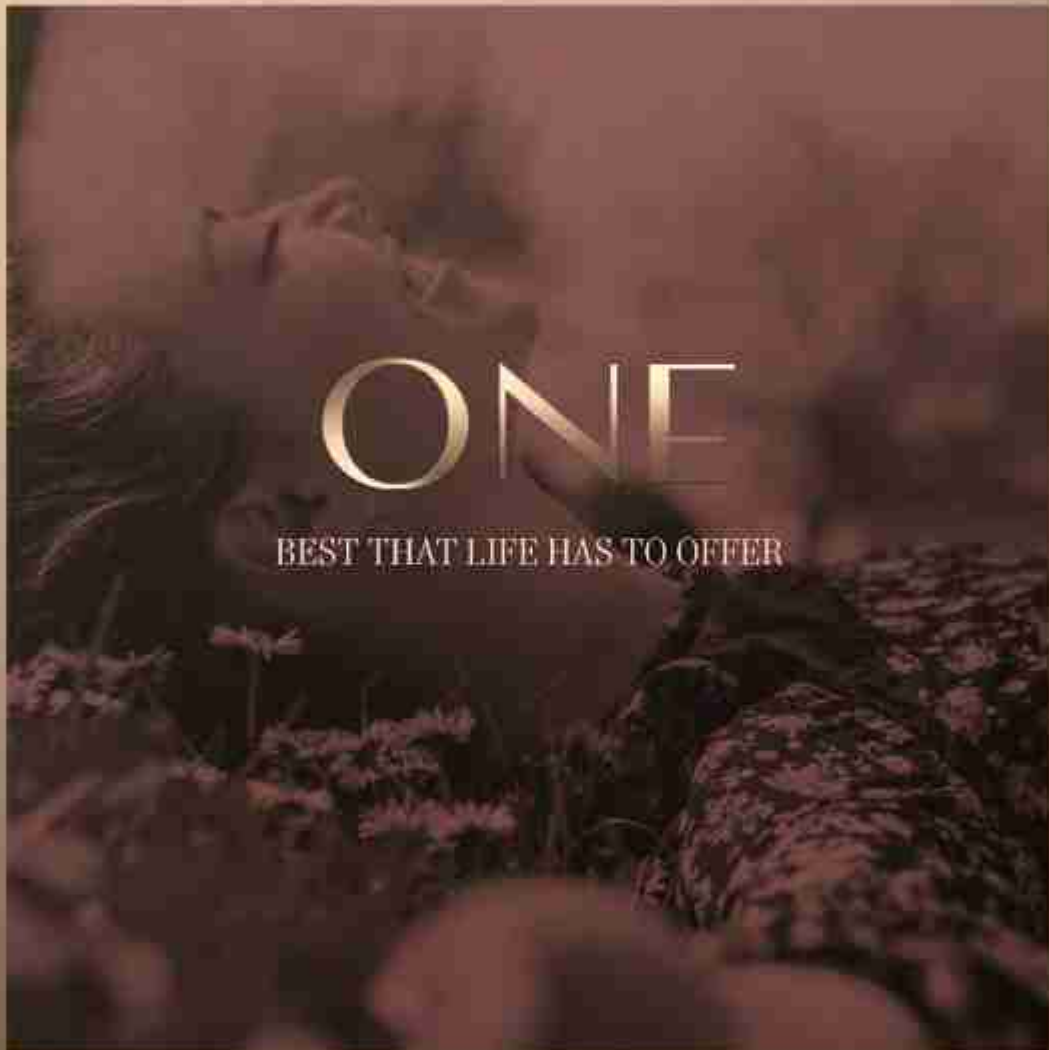
A place where you can take
one day at a time



ONE

BE ONESELF

It's one of a kind, like you



One where the world is
close yet far away

THE POWER OF ONE



*When imagination and vision
come together Life meets style.*

**City and nature hum together,
Work & play find a balance and become One**

ONE WAY: YOUR WAY

The best places are hidden in plain sight

Near the vital Ras Al Khor Road, Sobha One is a little world tucked away. Look to the north at the calming waters of the Creek as they look back. Further north in the skyline with panoramic views of The Burj Khalifa, Creek Tower to the Northeast and Downtown to the West.



ARRIVE & DEPART WITH GRACE

Sobha One is right near two new interchanges on Ras Al Khor Road. So, getting home has never been faster. With exits in both the West and East, a new planned metro line behind Sobha One, soar where you need to be on your terms.





LIVING BY THE WATER

Imagine waking up each morning next to serene water. The sun glints off the water, casting a sparkling path across the ripples. A light breeze blows, rustling the leaves of the nearby trees.

It's yours to stroll down the pathway or sit peacefully watching the calm waters. Go on, spend lazy weekends lounging near the water, reading, and soaking up the sun.



ONE POINT OF VIEW: YOURS

With a canvas spread over 1.5 million square feet, its breathtaking views as far as your eye can see. Look around to views of Golf Course, calm water, iconic Burj Khalifa & Downtown. Every glance sets a different mood.



ONE

SPACE

Sobha One spreads its tapestry over five interlinked towers. Rising from 30 stories tall and hitting a crescendo of 65 stories, it's one note after another that sings in chorus with the skyline

With 1 to 4 bedroom apartments & 2 to 4 bedroom Duplex,
It's a world of its own.



ONE FOR ALL
ALL FOR ONE



*Life is too short to settle for anything less than
the best. At Sobha One, luxury living is a
natural choice.*

TEE OFF IN STYLE

The first of its kind in Dubai, a world class Pitch and Putt golf course featuring 18 holes of golf, each meticulously designed.

It is the perfect way to unwind after a long day at work. After all, there's nothing like sinking a long putt on a sun-drenched fairway. The clubhouse is appointed with upscale amenities and a patio overlooking the greens.



DINE BY THE WATERS

The food & beverage esplanade that borders the calm waters is also a feast for the palate to suit every taste and time.

Spread over almost half a kilometer, it offers fine restaurants for an intimate dinner, quick catch-up over a cup of coffee, or a power lunch.



SKY GARDEN

Rise high above and look at the stars. Soak in the stunning views of the city. Catch the sun rays when they rise and set. Do it all from the magnificent panoramic sky terrace in each tower



COURTYARD FOR THE SENSES



All the 5 Towers at Sobha One have interconnected four themed courtyards. As private outdoor retreats, these lush, landscaped spaces add to the overall aesthetic.

RELAX

In a fast-paced world, finding ways to relax is more important than ever. Take a leisurely stroll through the tree avenues, do yoga on the group decks, or stroll in the gardens. And when you need to refuel, enjoy a meal at the BBQ & dining areas or catch a movie under the stars on our cinema screen. There is something for everyone





REMEMBER

The family courtyard is a great way to spend quality time together. You can pack a picnic lunch and enjoy the beautiful weather. Or spending a day cooling off in the water, splashing with the little ones. So, come on down and make memories with your loved ones!





RECHARGE

We believe that fitness should be fun! That's why we've created a unique courtyard that combines the best of gyms with exciting new indoor and outdoor features from static bikes, treadmills, circuit training areas and battle ropes. So sweat it out and be the best version of yourself.





REFRESH

This themed courtyard is the way to do just that after a long day. Step into the pool area, and the stress of daily life melts away. Feel your muscles loosening and your mind clearing as you swim laps. Close your eyes and let the warm sun wash over you, lulling you into a state of relaxation.





SOBHA ONE



FLEXIBLE PAYMENT PLAN

60%

During Construction

40%

On Completion

**Grand 1 to 4 Bedroom apartments & 2, 3, 4 Bedroom Duplex
starting from AED 1.1 MN***

ONE

awaits you...

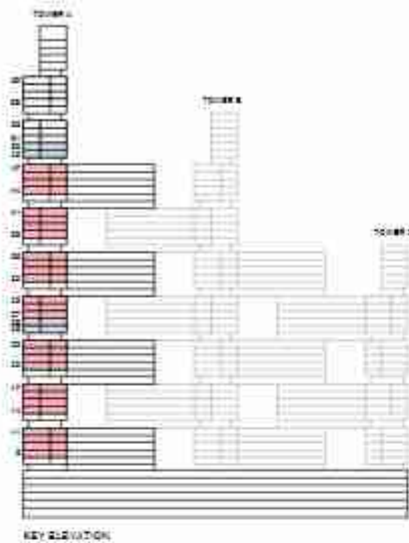
TOWERA

UNIT PLANS

1 BEDROOM APARTMENT

TYPE A (with powder room + balcony)

TOTAL SALEABLE AREA
 SUITE = 674.79 SQ.FT.
 BALCONY = 57.48 SQ.FT.
 TOTAL = 732.27 SQ.FT.



List of unit numbers with this unit plan:

VIEWS

Creek

A802, A804, A902, A904, A1002, A1004, A1102, A1104, A1402, A1404, A1502, A1504, A1602, A1604, A1702, A1704, A2002, A2004, A2102, A2104, A2202, A2204, A2302, A2304, A2702, A2704, A2802, A2804, A2902, A2904, A3202, A3204, A3302, A3304, A3402, A3404, A3502, A3504, A3802, A3804, A3902, A3904, A4002, A4004, A4102, A4104, A4402, A4404, A4502, A4504, A4602, A4604, A4702, A4704

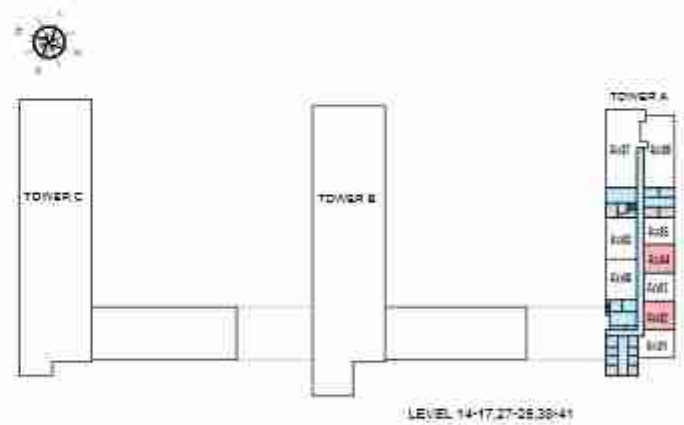
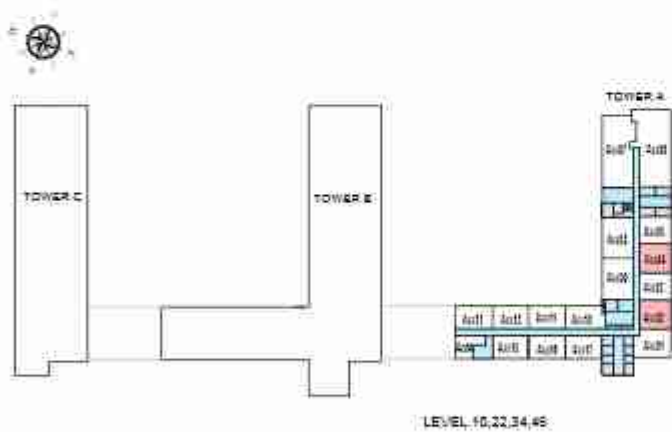
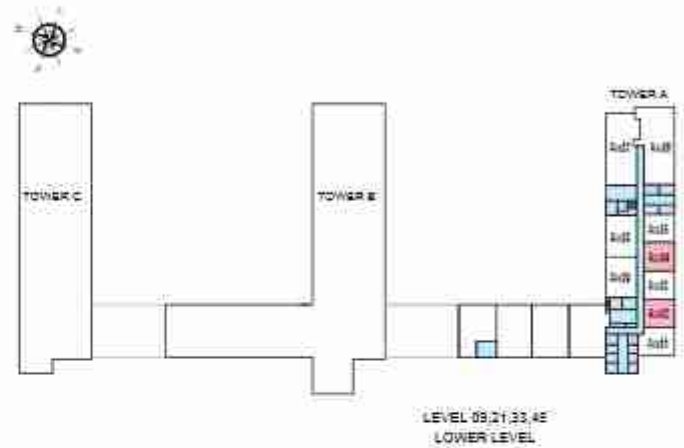
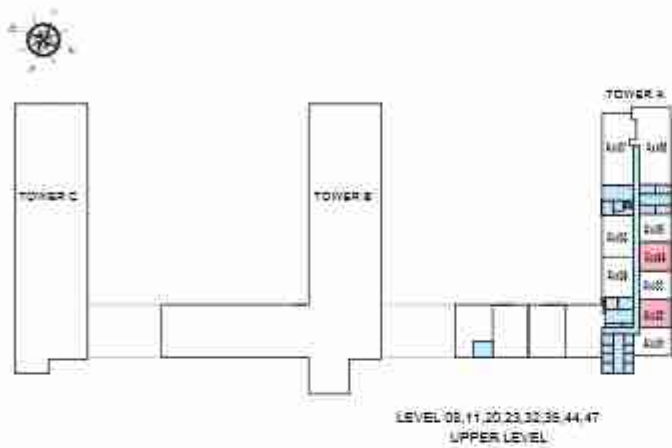
Disclaimer: 1. All dimensions are in meters, measured to wall finishes. 2. All materials, dimensions & drawings are approximate. 3. Information is subject to change without notice, at developer's absolute discretion. 4. Actual areas may vary from the stated areas. 5. Drawing are not to scale. 6. All images used are for illustrative purpose only and do not represent the actual size, features, specifications, fittings and furnishings. 7. The developer reserves the right to make revisions/alterations, at its absolute discretion, without any liability whatsoever.

1 BEDROOM APARTMENT

TYPE A (with powder room + balcony)

TOTAL SALEABLE AREA
 SUITE = 674.79 SQ.FT.
 BALCONY = 57.48 SQ.FT.
 TOTAL = 732.27 SQ.FT.

 UNIT



List of unit numbers with this unit plan:

VIEWS

Creek

A802, A804, A902, A904, A1002, A1004, A1102, A1104, A1402, A1404, A1502, A1504, A1602, A1604, A1702, A1704, A2002, A2004, A2102, A2104, A2202, A2204, A2302, A2304, A2702, A2704, A2802, A2804, A2902, A2904, A3202, A3204, A3302, A3304, A3402, A3404, A3502, A3504, A3802, A3804, A3902, A3904, A4002, A4004, A4102, A4104, A4402, A4404, A4502, A4504, A4602, A4604, A4702, A4704

Disclaimer: 1. All dimensions are in metric, measured to wall finishes. 2. All materials, dimensions & drawings are approximate. 3. Information is subject to change without notice, at developer's absolute discretion. 4. Actual areas may vary from the stated areas. 5. Drawing are not to scale. 6. All images used are for illustrative purpose only and do not represent the actual size, features, specifications, fittings and furnishings. 7. The developer reserves the right to make revisions/alterations, at its absolute discretion, without any liability whatsoever.

1 BEDROOM APARTMENT

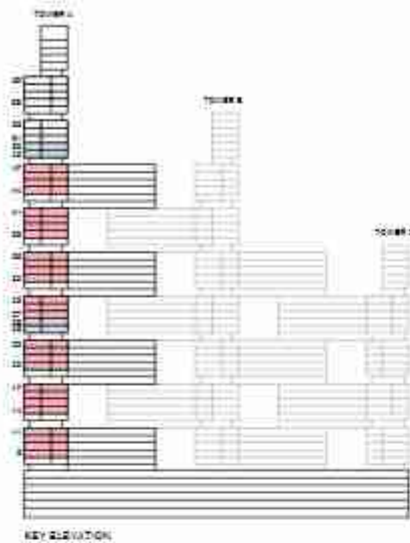
TYPE A (with powder room + balcony) VARIANT 1

TOTAL SALEABLE AREA

SUITE = 674.79 SQ.FT.

BALCONY = 57.48 SQ.FT.

TOTAL = 732.27 SQ.FT.



List of unit numbers with this unit plan:

VIEWS

Creek

A803, A805, A903, A905, A1003, A1005, A1103, A1105, A1403, A1405, A1503, A1505, A1603, A1605, A1703, A1705, A2003, A2005, A2103, A2105, A2203, A2205, A2303, A2305, A2703, A2705, A2803, A2805, A2903, A2905, A3203, A3205, A3303, A3305, A3403, A3405, A3503, A3505, A3803, A3805, A3903, A3905, A4003, A4005, A4103, A4105, A4403, A4405, A4503, A4505, A4603, A4605, A4703, A4705

Disclaimer: 1. All dimensions are in meters, measured to wall finishes. 2. All materials, dimensions & drawings are approximate. 3. Information is subject to change without notice, at developer's absolute discretion. 4. Actual areas may vary from the stated areas. 5. Drawing are not to scale. 6. All images used are for illustrative purpose only and do not represent the actual size, features, specifications, fittings and furnishings. 7. The developer reserves the right to make revisions/alterations, at its absolute discretion, without any liability whatsoever.

1 BEDROOM APARTMENT

TYPE A (with powder room + balcony) VARIANT 1

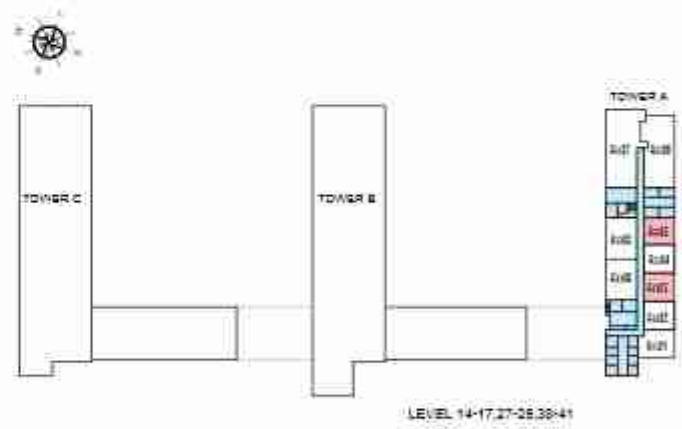
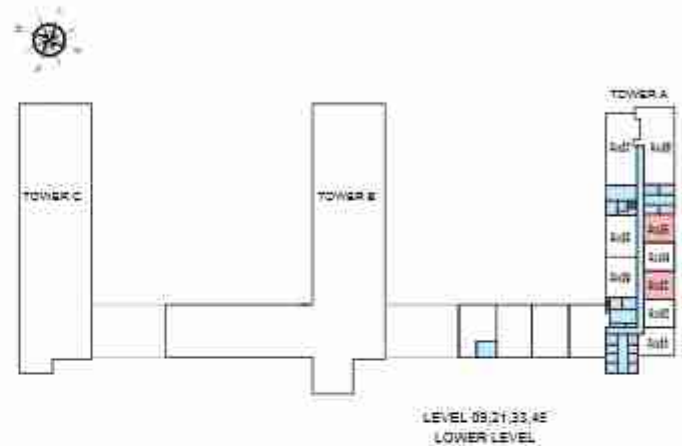
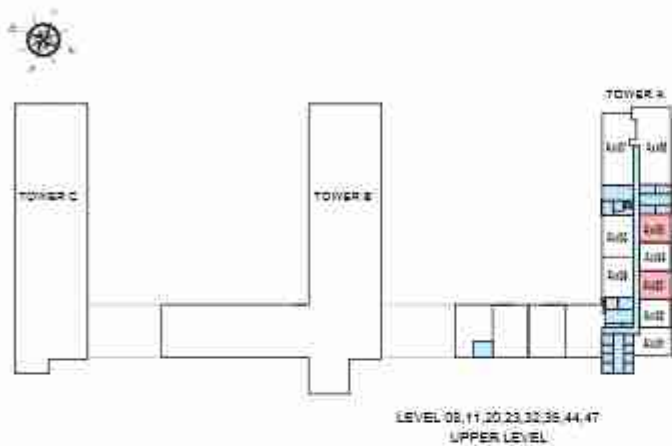
TOTAL SALEABLE AREA

SUITE = 674.79 SQ.FT.

BALCONY = 57.48 SQ.FT.

TOTAL = 732.27 SQ.FT.

 UNIT



List of unit numbers with this unit plan:

VIEWS

Creek

A803, A805, A903, A905, A1003, A1005, A1103, A1105, A1403, A1405, A1503, A1505, A1603, A1605, A1703, A1705, A2003, A2005, A2103, A2105, A2203, A2205, A2303, A2305, A2703, A2705, A2803, A2805, A2903, A2905, A3203, A3205, A3303, A3305, A3403, A3405, A3503, A3505, A3803, A3805, A3903, A3905, A4003, A4005, A4103, A4105, A4403, A4405, A4503, A4505, A4603, A4605, A4703, A4705

Disclaimer: 1. All dimensions are in metric, measured to wall finishes. 2. All materials, dimensions & drawings are approximate. 3. Information is subject to change without notice, at developer's absolute discretion. 4. Actual areas may vary from the stated areas. 5. Drawing are not to scale. 6. All images used are for illustrative purpose only and do not represent the actual size, features, specifications, fittings and furnishings. 7. The developer reserves the right to make revisions/alterations, at its absolute discretion, without any liability whatsoever.

1 BEDROOM APARTMENT

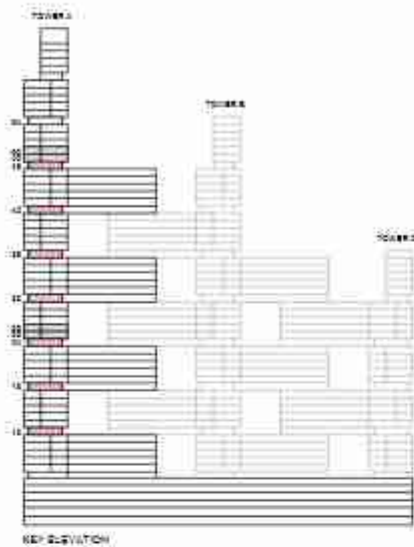
TYPE B (with powder room + yard)

TOTAL SALEABLE AREA

SUITE = 675.11 SQ.FT.

YARD = 132.72 SQ.FT.

TOTAL = 807.83 SQ.FT.



List of unit numbers with this unit plan:

VIEWS

Creek

A1202, A1204, A1802, A1804, A2402, A2404, A3002, A3004, A3602, A3604, A4202, A4204, A4802, A4804

Disclaimer: 1. All dimensions are in meters, measured to wall finishes. 2. All materials, dimensions & drawings are approximate. 3. Information is subject to change without notice, at developer's absolute discretion. 4. Actual areas may vary from the stated areas. 5. Drawing are not to scale. 6. All images used are for illustrative purpose only and do not represent the actual size, features, specifications, fittings and furnishings. 7. The developer reserves the right to make revisions/alterations, at its absolute discretion, without any liability whatsoever.

1 BEDROOM APARTMENT

TYPE B (with powder room + yard)

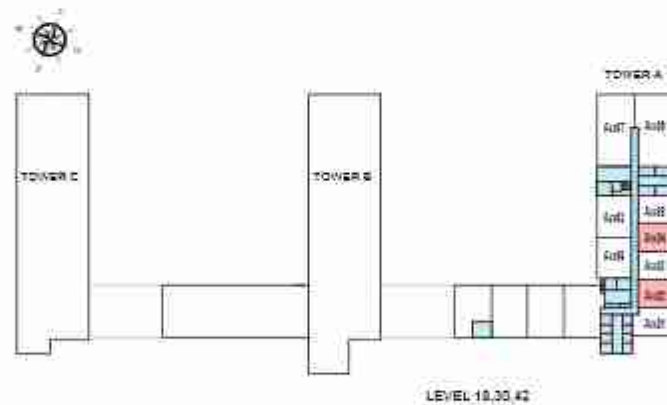
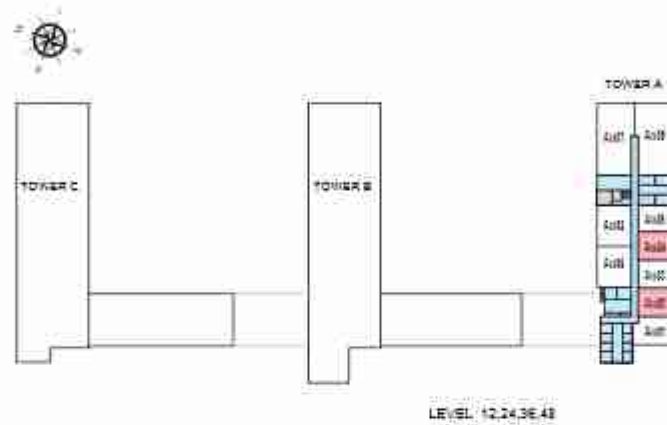
TOTAL SALEABLE AREA

SUITE = 675.11 SQ.FT.

YARD = 132.72 SQ.FT.

TOTAL = 807.83 SQ.FT.

 UNIT



List of unit numbers with this unit plan:

VIEWS

Creek

A1202, A1204, A1802, A1804, A2402, A2404, A3002, A3004, A3602, A3604, A4202, A4204, A4802, A4804

Disclaimer: 1. All dimensions are in metric, measured to wall finishes. 2. All materials, dimensions & drawings are approximate. 3. Information is subject to change without notice, at developer's absolute discretion. 4. Actual areas may vary from the stated areas. 5. Drawing are not to scale. 6. All images used are for illustrative purpose only and do not represent the actual size, features, specifications, fittings and furnishings. 7. The developer reserves the right to make revisions/alterations, at its absolute discretion, without any liability whatsoever.

1 BEDROOM APARTMENT

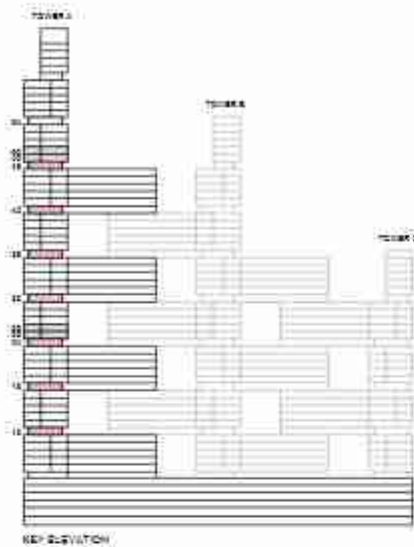
TYPE B (with powder room + yard) VARIANT 1

TOTAL SALEABLE AREA

SUITE = 675.11 SQ.FT.

YARD = 132.72 SQ.FT.

TOTAL = 807.83 SQ.FT.



List of unit numbers with this unit plan:

VIEWS

Creek

A1203, A1205, A1803, A1805, A2403, A2405, A3003, A3005, A3603, A3605, A4203, A4205, A4803, A4805

Disclaimer: 1. All dimensions are in meters, measured to wall finishes. 2. All materials, dimensions & drawings are approximate. 3. Information is subject to change without notice, at developer's absolute discretion. 4. Actual areas may vary from the stated areas. 5. Drawing are not to scale. 6. All images used are for illustrative purpose only and do not represent the actual size, features, specifications, fittings and furnishings. 7. The developer reserves the right to make revisions/alterations, at its absolute discretion, without any liability whatsoever.

1 BEDROOM APARTMENT

TYPE B (with powder room + yard) VARIANT 1

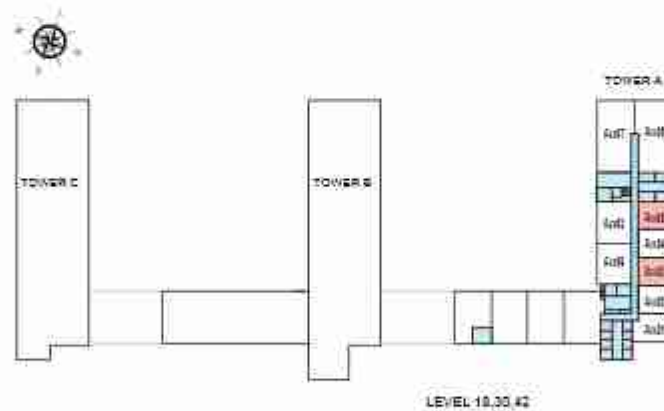
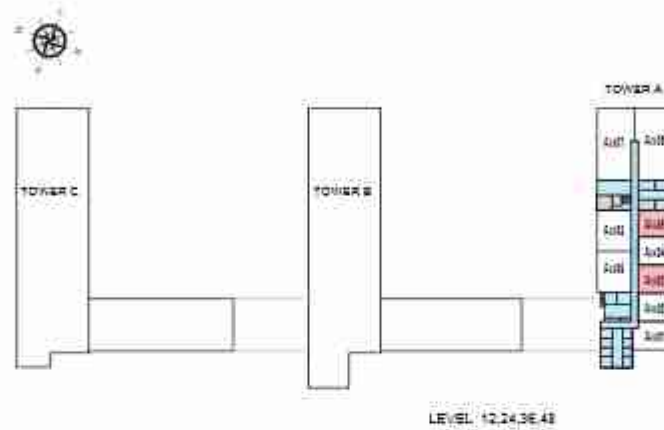
TOTAL SALEABLE AREA

SUITE = 675.11 SQ.FT.

YARD = 132.72 SQ.FT.

TOTAL = 807.83 SQ.FT.

 UNIT



List of unit numbers with this unit plan:

VIEWS

Creek

A1203, A1205, A1803, A1805, A2403, A2405, A3003, A3005, A3603, A3605, A4203, A4205, A4803, A4805

Disclaimer: 1. All dimensions are in metric, measured to wall finishes. 2. All materials, dimensions & drawings are approximate. 3. Information is subject to change without notice, at developer's absolute discretion. 4. Actual areas may vary from the stated areas. 5. Drawing are not to scale. 6. All images used are for illustrative purpose only and do not represent the actual size, features, specifications, fittings and furnishings. 7. The developer reserves the right to make revisions/alterations, at its absolute discretion, without any liability whatsoever.

1 BEDROOM APARTMENT

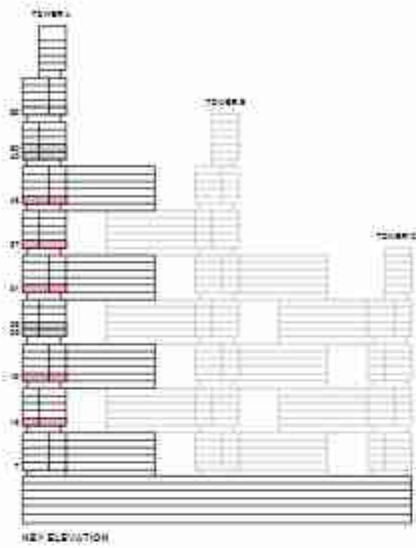
TYPE C (with powder room + yard)

TOTAL SALEABLE AREA

SUITE = 674.79 SQ.FT.

YARD = 133.04 SQ.FT.

TOTAL = 807.83 SQ.FT.



List of unit numbers with this unit plan:

VIEWS

Creek

A1302, A1304, A1902, A1904, A3102, A3104, A3702, A3704, A4302, A4304

Disclaimer: 1. All dimensions are in meters, measured to wall finishes. 2. All materials, dimensions & drawings are approximate. 3. Information is subject to change without notice, at developer's absolute discretion. 4. Actual areas may vary from the stated areas. 5. Drawing are not to scale. 6. All images used are for illustrative purpose only and do not represent the actual size, features, specifications, fittings and furnishings. 7. The developer reserves the right to make revisions/alterations, at its absolute discretion, without any liability whatsoever.

1 BEDROOM APARTMENT

TYPE C (with powder room + yard)

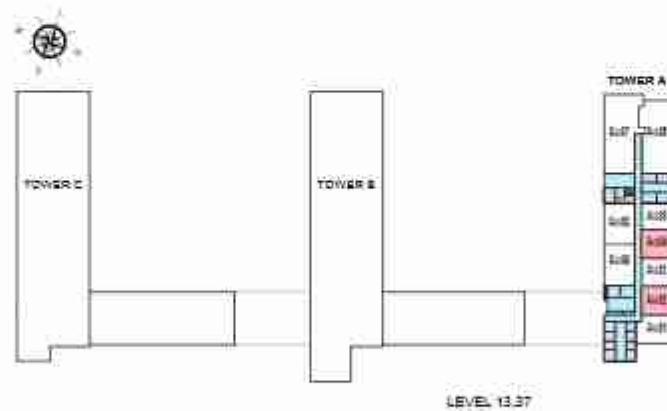
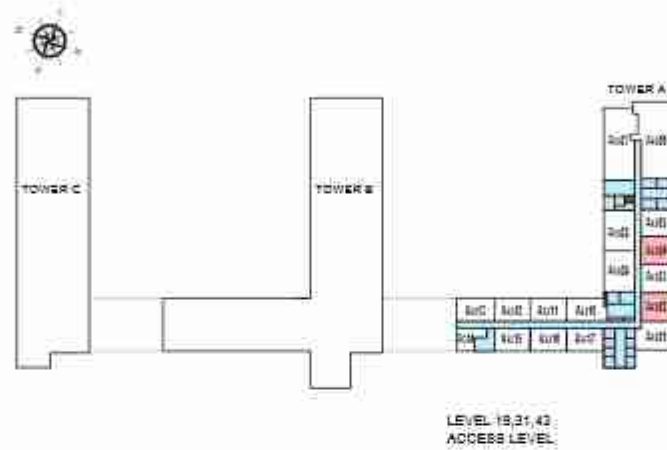
TOTAL SALEABLE AREA

SUITE = 674.79 SQ.FT.

YARD = 133.04 SQ.FT.

TOTAL = 807.83 SQ.FT.

 UNIT



List of unit numbers with this unit plan:

VIEWS

Creek

A1302, A1304, A1902, A1904, A3102, A3104, A3702, A3704, A4302, A4304

Disclaimer: 1. All dimensions are in metric, measured to wall finishes. 2. All materials, dimensions & drawings are approximate. 3. Information is subject to change without notice, at developer's absolute discretion. 4. Actual areas may vary from the stated areas. 5. Drawing are not to scale. 6. All images used are for illustrative purpose only and do not represent the actual size, features, specifications, fittings and furnishings. 7. The developer reserves the right to make revisions/alterations, at its absolute discretion, without any liability whatsoever.

1 BEDROOM APARTMENT

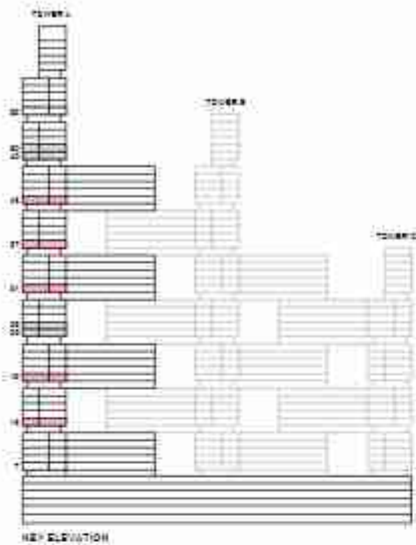
TYPE C (with powder room + yard) VARIANT 1

TOTAL SALEABLE AREA

SUITE = 674.79 SQ.FT.

YARD = 133.04 SQ.FT.

TOTAL = 807.83 SQ.FT.



List of unit numbers with this unit plan:

VIEWS

Creek

A1303, A1305, A1903, A1905, A3103, A3105, A3703, A3705, A4303, A4305

Disclaimer: 1. All dimensions are in meters, measured to wall finishes. 2. All materials, dimensions & drawings are approximate. 3. Information is subject to change without notice, at developer's absolute discretion. 4. Actual areas may vary from the stated areas. 5. Drawing are not to scale. 6. All images used are for illustrative purpose only and do not represent the actual size, features, specifications, fittings and furnishings. 7. The developer reserves the right to make revisions/alterations, at its absolute discretion, without any liability whatsoever.

1 BEDROOM APARTMENT

TYPE C (with powder room + yard) VARIANT 1

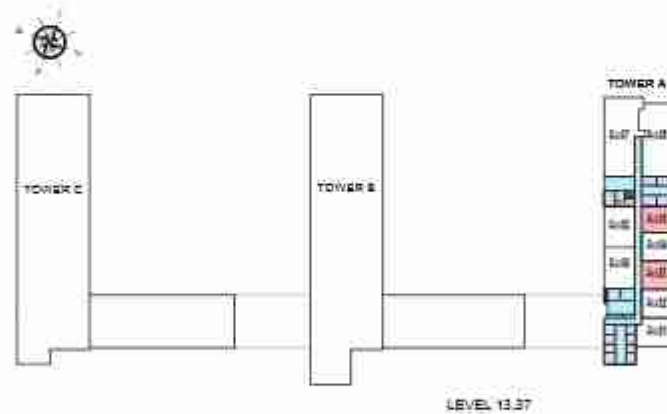
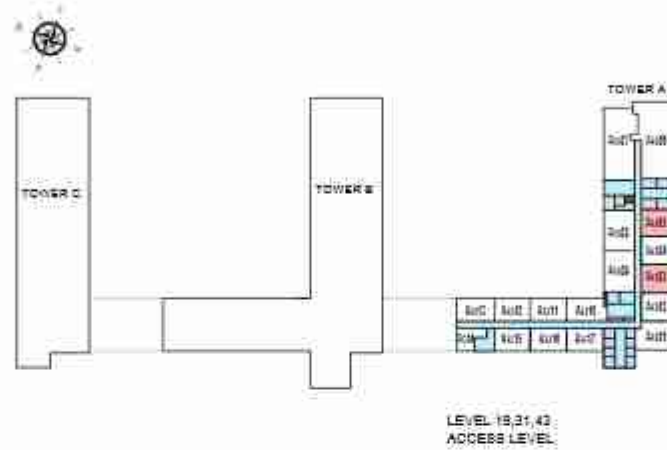
TOTAL SALEABLE AREA

SUITE = 674.79 SQ.FT.

YARD = 133.04 SQ.FT.

TOTAL = 807.83 SQ.FT.

 UNIT



List of unit numbers with this unit plan:

VIEWS

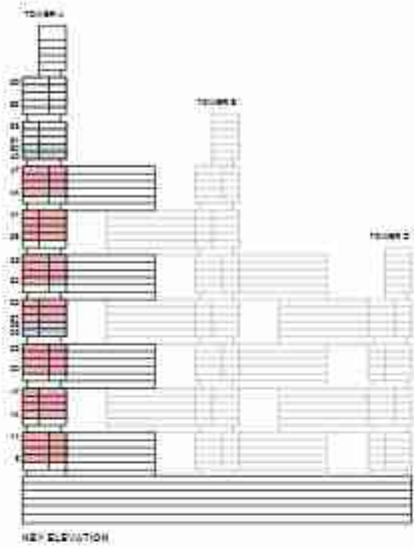
Creek

A1303, A1305, A1903, A1905, A3103, A3105, A3703, A3705, A4303, A4305

Disclaimer: 1. All dimensions are in metric, measured to wall finishes. 2. All materials, dimensions & drawings are approximate. 3. Information is subject to change without notice, at developer's absolute discretion. 4. Actual areas may vary from the stated areas. 5. Drawing are not to scale. 6. All images used are for illustrative purpose only and do not represent the actual size, features, specifications, fittings and furnishings. 7. The developer reserves the right to make revisions/alterations, at its absolute discretion, without any liability whatsoever.

2 BEDROOM APARTMENT
TYPE A (with powder room + balcony)

TOTAL SALEABLE AREA
 SUITE = 1,034.63 SQ.FT.
 BALCONY = 64.69 SQ.FT.
 TOTAL = 1,099.32 SQ.FT.



List of unit numbers with this unit plan:

VIEWS

Ras Al Khor, Amenities
 A809, A909

Ras Al Khor, Golf Course, Amenities
 A1009, A1109, A1409, A1509, A1609, A1709, A2009, A2109, A2209, A2309

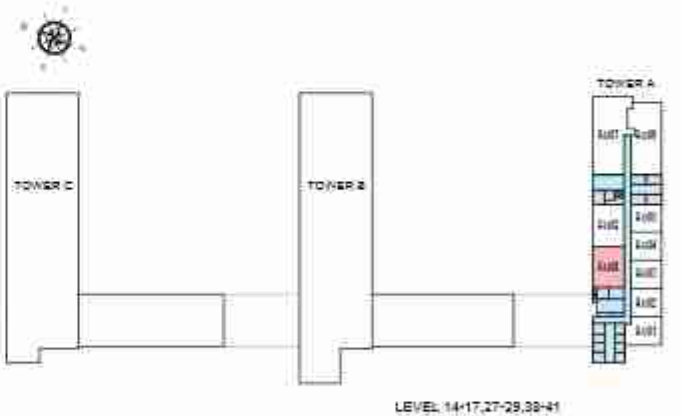
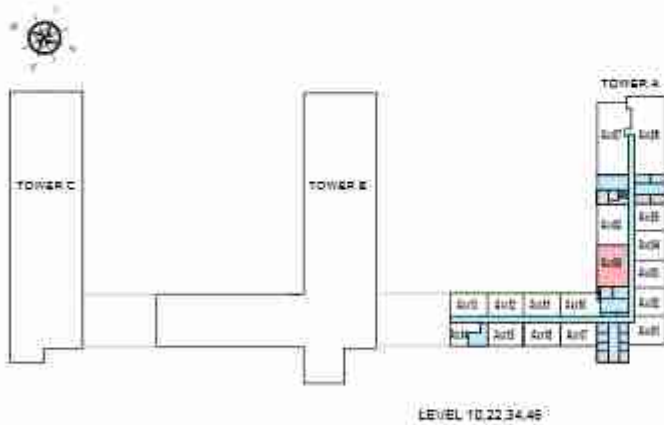
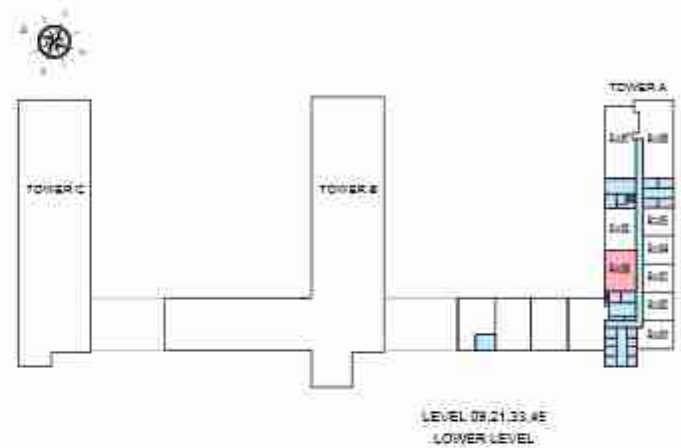
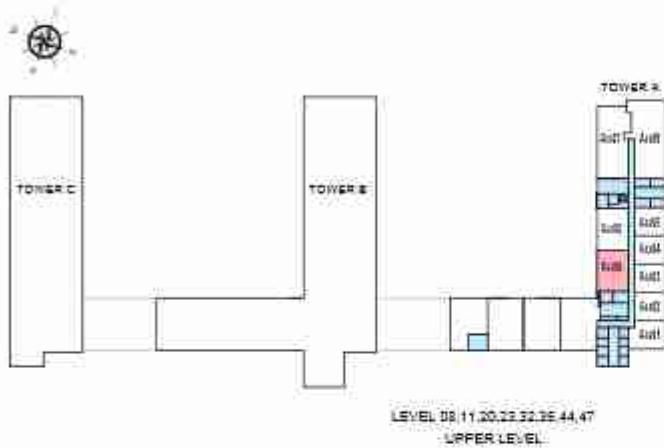
Ras Al Khor, Golf Course
 A2709, A2809, A2909, A3209, A3309, A3409, A3509, A3809, A3909, A4009, A4109, A4409, A4509, A4609, A4709

Disclaimer: 1. All dimensions are in meters, measured to wall finishes. 2. All materials, dimensions & drawings are approximate. 3. Information is subject to change without notice, at developer's absolute discretion. 4. Actual areas may vary from the stated areas. 5. Drawing are not to scale. 6. All images used are for illustrative purpose only and do not represent the actual size, features, specifications, fittings and furnishings. 7. The developer reserves the right to make revisions/alterations, at its absolute discretion, without any liability whatsoever.

2 BEDROOM APARTMENT TYPE A (with powder room + balcony)

TOTAL SALEABLE AREA
SUITE = 1,034.63 SQ.FT.
BALCONY = 64.69 SQ.FT.
TOTAL = 1,099.32 SQ.FT.

 UNIT



List of unit numbers with this unit plan:

VIEWS

Ras Al Khor, Amenities
A809, A909

Ras Al Khor, Golf Course, Amenities
A1009, A1109, A1409, A1509, A1609, A1709, A2009, A2109, A2209, A2309

Ras Al Khor, Golf Course
A2709, A2809, A2909, A3209, A3309, A3409, A3509, A3809, A3909, A4009, A4109, A4409, A4509, A4609, A4709

Disclaimer: 1. All dimensions are in meters, measured to wall finishes. 2. All materials, dimensions & drawings are approximate. 3. Information is subject to change without notice, at developer's absolute discretion. 4. Actual areas may vary from the stated areas. 5. Drawing are not to scale. 6. All images used are for illustrative purpose only and do not represent the actual size, features, specifications, fittings and furnishings. 7. The developer reserves the right to make revisions/alterations, at its absolute discretion, without any liability whatsoever.

2 BEDROOM APARTMENT

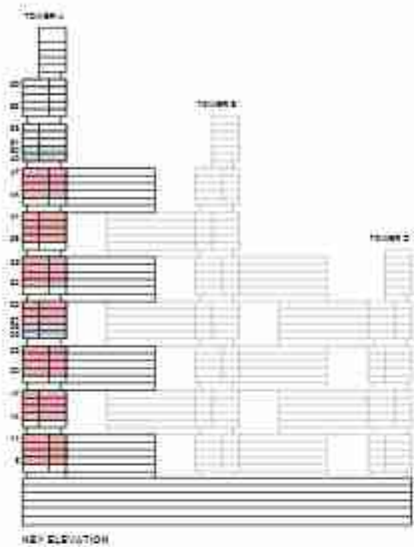
TYPE A (with powder room + balcony) VARIANT 1

TOTAL SALEABLE AREA

SUITE = 1,034.63 SQ.FT.

BALCONY = 64.69 SQ.FT.

TOTAL = 1,099.32 SQ.FT.



List of unit numbers with this unit plan:

VIEWS

Ras Al Khor, Amenities
A808, A908

Ras Al Khor, Golf Course, Amenities
A1008, A1108, A1408, A1508, A1608, A1708, A2008, A2108, A2208, A2308

Ras Al Khor, Golf Course
A2708, A2808, A2908, A3208, A3308, A3408, A3508, A3808, A3908, A4008, A4108, A4408, A4508, A4608, A4708

Disclaimer: 1. All dimensions are in meters, measured to wall finishes. 2. All materials, dimensions & drawings are approximate. 3. Information is subject to change without notice, at developer's absolute discretion. 4. Actual areas may vary from the stated areas. 5. Drawing are not to scale. 6. All images used are for illustrative purpose only and do not represent the actual size, features, specifications, fittings and furnishings. 7. The developer reserves the right to make revisions/alterations, at its absolute discretion, without any liability whatsoever.

2 BEDROOM APARTMENT

TYPE A (with powder room + balcony) VARIANT 1

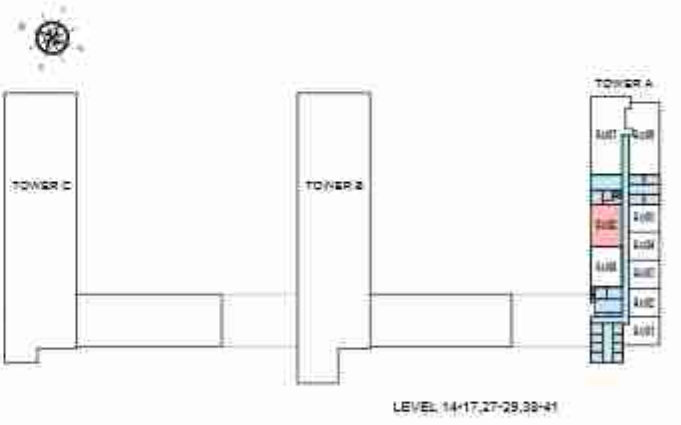
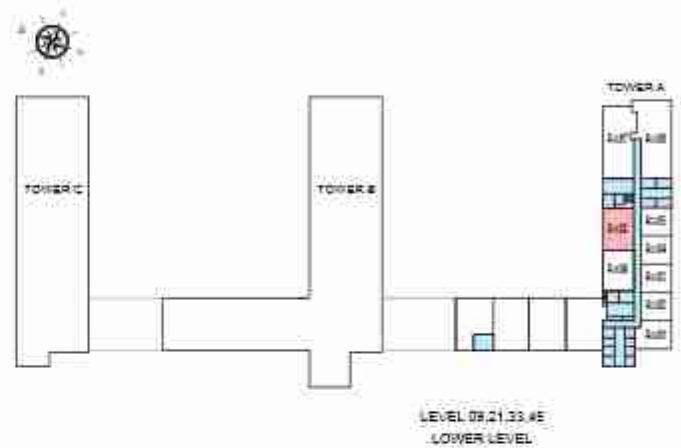
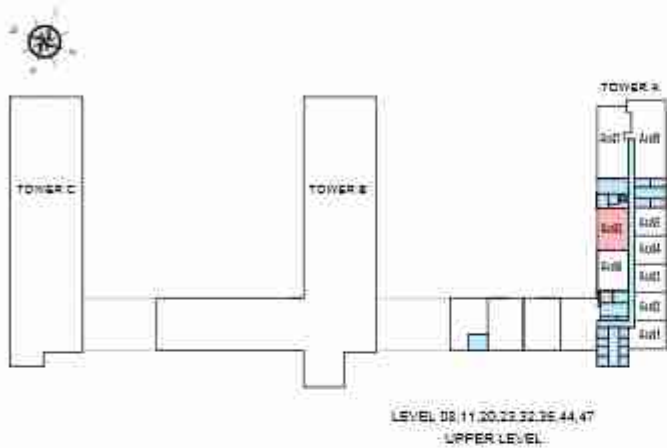
TOTAL SALEABLE AREA

SUITE = 1,034.63 SQ.FT.

BALCONY = 64.69 SQ.FT.

TOTAL = 1,099.32 SQ.FT.

 UNIT



List of unit numbers with this unit plan:

VIEWS

Ras Al Khor, Amenities
A808, A908

Ras Al Khor, Golf Course, Amenities
A1008, A1108, A1408, A1508, A1608, A1708, A2008, A2108, A2208, A2308

Ras Al Khor, Golf Course
A2708, A2808, A2908, A3208, A3308, A3408, A3508, A3808, A3908, A4008, A4108, A4408, A4508, A4608, A4708

Disclaimer: 1. All dimensions are in meters, measured to wall finishes. 2. All materials, dimensions & drawings are approximate. 3. Information is subject to change without notice, at developer's absolute discretion. 4. Actual areas may vary from the stated areas. 5. Drawing are not to scale. 6. All images used are for illustrative purpose only and do not represent the actual size, features, specifications, fittings and furnishings. 7. The developer reserves the right to make revisions/alterations, at its absolute discretion, without any liability whatsoever.

2 BEDROOM APARTMENT

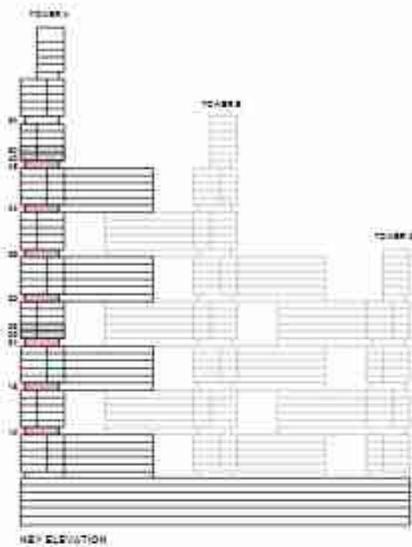
TYPE G (with powder room + yard)

TOTAL SALEABLE AREA

SUITE = 1,025.05 SQ.FT.

YARD = 184.82 SQ.FT.

TOTAL = 1,209.87 SQ.FT.



List of unit numbers with this unit plan:

VIEWS

Ras Al Khor, Golf Course, Amenities
A1209, A1809, A2409

Ras Al Khor, Golf Course
A3009, A3609, A4209, A4809

Disclaimer: 1. All dimensions are in meters, measured to wall finishes. 2. All materials, dimensions & drawings are approximate. 3. Information is subject to change without notice, at developer's absolute discretion. 4. Actual areas may vary from the stated areas. 5. Drawing are not to scale. 6. All images used are for illustrative purpose only and do not represent the actual size, features, specifications, fittings and furnishings. 7. The developer reserves the right to make revisions/alterations, at its absolute discretion, without any liability whatsoever.

2 BEDROOM APARTMENT

TYPE G (with powder room + yard)

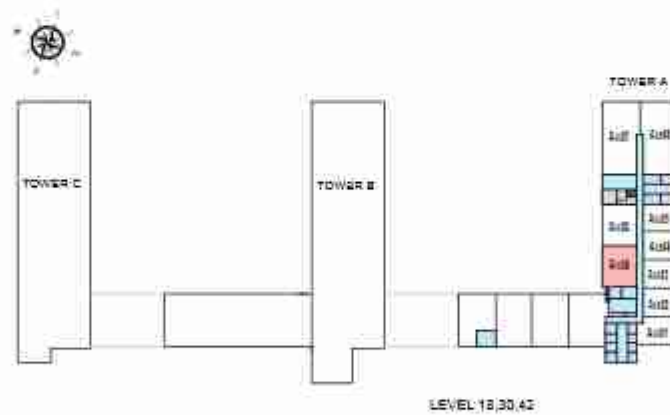
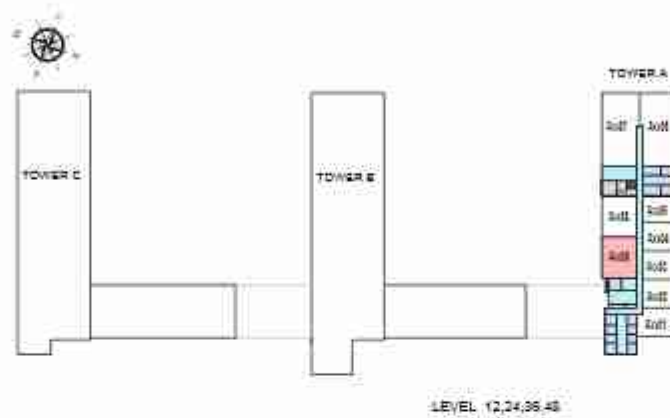
TOTAL SALEABLE AREA

SUITE = 1,025.05 SQ.FT.

YARD = 184.82 SQ.FT.

TOTAL = 1,209.87 SQ.FT.

 UNIT



List of unit numbers with this unit plan:

VIEWS

Ras Al Khor, Golf Course, Amenities

A1209, A1809, A2409

Ras Al Khor, Golf Course

A3009, A3609, A4209, A4809

Disclaimer: 1. All dimensions are in meters, measured to wall finishes. 2. All materials, dimensions & drawings are approximate. 3. Information is subject to change without notice, at developer's absolute discretion. 4. Actual areas may vary from the stated areas. 5. Drawing are not to scale. 6. All images used are for illustrative purpose only and do not represent the actual size, features, specifications, fittings and furnishings. 7. The developer reserves the right to make revisions/alterations, at its absolute discretion, without any liability whatsoever.

2 BEDROOM APARTMENT

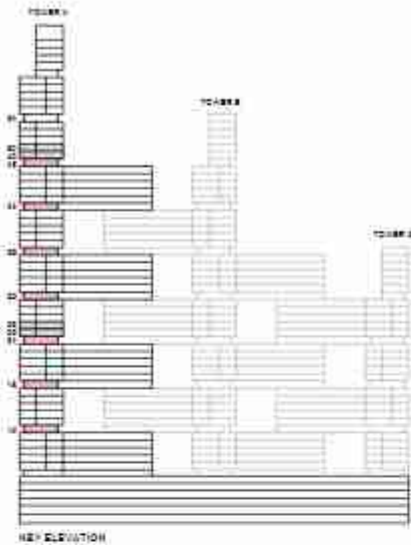
TYPE G (with powder room + yard) VARIANT 1

TOTAL SALEABLE AREA

SUITE = 1,025.05 SQ.FT.

YARD = 184.82 SQ.FT.

TOTAL = 1,209.87 SQ.FT.



List of unit numbers with this unit plan:

VIEWS

Ras Al Khor, Golf Course, Amenities
A1208, A1808, A2408

Ras Al Khor, Golf Course
A3008, A3608, A4208, A4808

Disclaimer: 1. All dimensions are in meters, measured to wall finishes. 2. All materials, dimensions & drawings are approximate. 3. Information is subject to change without notice, at developer's absolute discretion. 4. Actual areas may vary from the stated areas. 5. Drawing are not to scale. 6. All images used are for illustrative purpose only and do not represent the actual size, features, specifications, fittings and furnishings. 7. The developer reserves the right to make revisions/alterations, at its absolute discretion, without any liability whatsoever.

2 BEDROOM APARTMENT

TYPE G (with powder room + yard) VARIANT 1

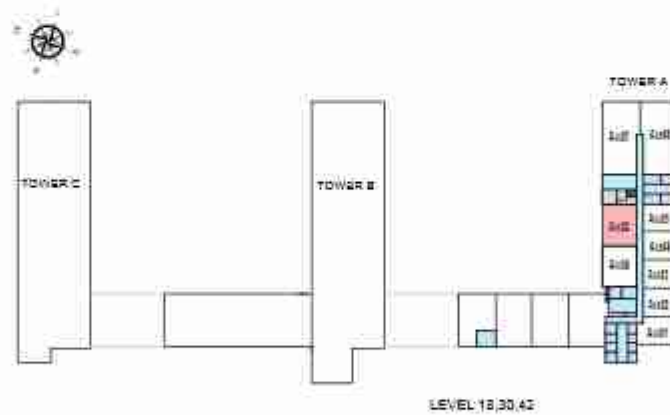
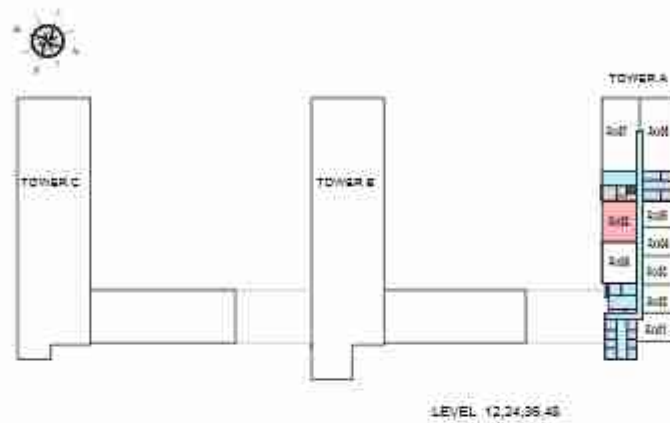
TOTAL SALEABLE AREA

SUITE = 1,025.05 SQ.FT.

YARD = 184.82 SQ.FT.

TOTAL = 1,209.87 SQ.FT.

 UNIT



List of unit numbers with this unit plan:

VIEWS

Ras Al Khor, Golf Course, Amenities
A1208, A1808, A2408

Ras Al Khor, Golf Course
A3008, A3608, A4208, A4808

Disclaimer: 1. All dimensions are in meters, measured to wall finishes. 2. All materials, dimensions & drawings are approximate. 3. Information is subject to change without notice, at developer's absolute discretion. 4. Actual areas may vary from the stated areas. 5. Drawing are not to scale. 6. All images used are for illustrative purpose only and do not represent the actual size, features, specifications, fittings and furnishings. 7. The developer reserves the right to make revisions/alterations, at its absolute discretion, without any liability whatsoever.

2 BEDROOM APARTMENT

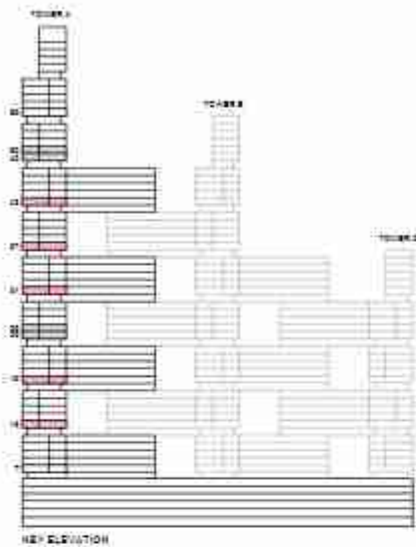
TYPE P (with powder room + yard)

TOTAL SALEABLE AREA

SUITE = 1,034.61 SQ.FT.

YARD = 178.41 SQ.FT.

TOTAL = 1,213.02 SQ.FT.



List of unit numbers with this unit plan:

VIEWS

Ras Al Khor, Golf Course, Amenities
A1309, A1909

Ras Al Khor, Golf Course
A3109, A3709, A4309

Disclaimer: 1. All dimensions are in meters, measured to wall finishes. 2. All materials, dimensions & drawings are approximate. 3. Information is subject to change without notice, at developer's absolute discretion. 4. Actual areas may vary from the stated areas. 5. Drawing are not to scale. 6. All images used are for illustrative purpose only and do not represent the actual size, features, specifications, fittings and furnishings. 7. The developer reserves the right to make revisions/alterations, at its absolute discretion, without any liability whatsoever.

2 BEDROOM APARTMENT

TYPE P (with powder room + yard)

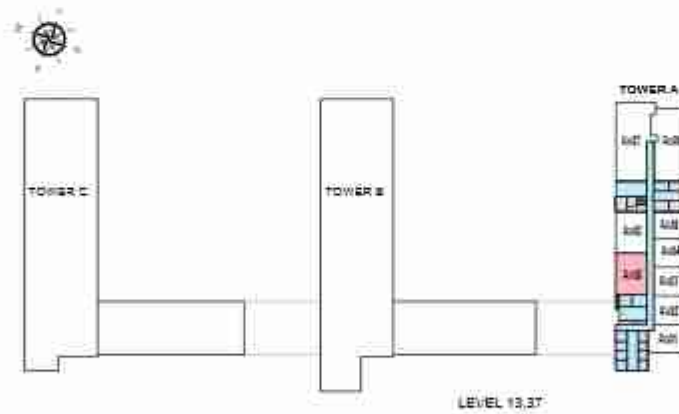
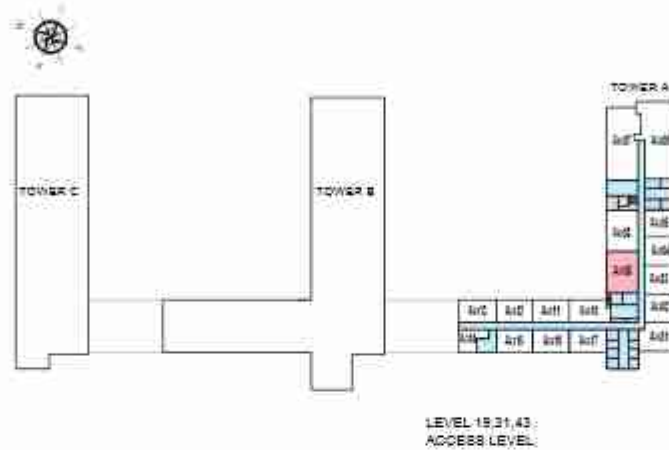
TOTAL SALEABLE AREA

SUITE = 1,034.61 SQ.FT.

YARD = 178.41 SQ.FT.

TOTAL = 1,213.02 SQ.FT.

 UNIT



List of unit numbers with this unit plan:

VIEWS

Ras Al Khor, Golf Course, Amenities
A1309, A1909

Ras Al Khor, Golf Course
A3109, A3709, A4309

Disclaimer: 1. All dimensions are in meters, measured to wall finishes. 2. All materials, dimensions & drawings are approximate. 3. Information is subject to change without notice, at developer's absolute discretion. 4. Actual areas may vary from the stated areas. 5. Drawing are not to scale. 6. All images used are for illustrative purpose only and do not represent the actual size, features, specifications, fittings and furnishings. 7. The developer reserves the right to make revisions/alterations, at its absolute discretion, without any liability whatsoever.

2 BEDROOM APARTMENT

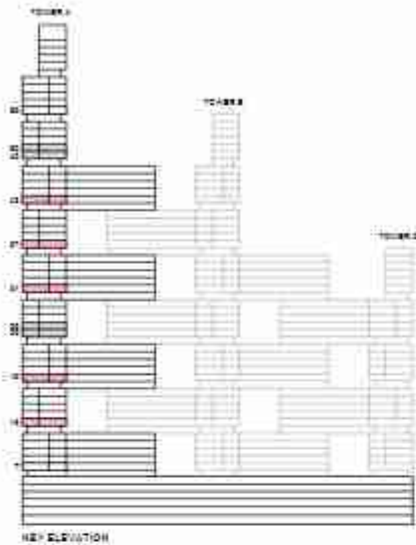
TYPE P (with powder room + yard) VARIANT 1

TOTAL SALEABLE AREA

SUITE = 1,034.61 SQ.FT.

YARD = 178.41 SQ.FT.

TOTAL = 1,213.02 SQ.FT.



List of unit numbers with this unit plan:

VIEWS

Ras Al Khor, Golf Course, Amenities
A130B, A190B

Ras Al Khor, Golf Course
A310B, A170B, A420B

Disclaimer: 1. All dimensions are in meters, measured to wall finishes. 2. All materials, dimensions & drawings are approximate. 3. Information is subject to change without notice, at developer's absolute discretion. 4. Actual areas may vary from the stated areas. 5. Drawing are not to scale. 6. All images used are for illustrative purpose only and do not represent the actual size, features, specifications, fittings and furnishings. 7. The developer reserves the right to make revisions/alterations, at its absolute discretion, without any liability whatsoever.

2 BEDROOM APARTMENT

TYPE P (with powder room + yard) VARIANT 1

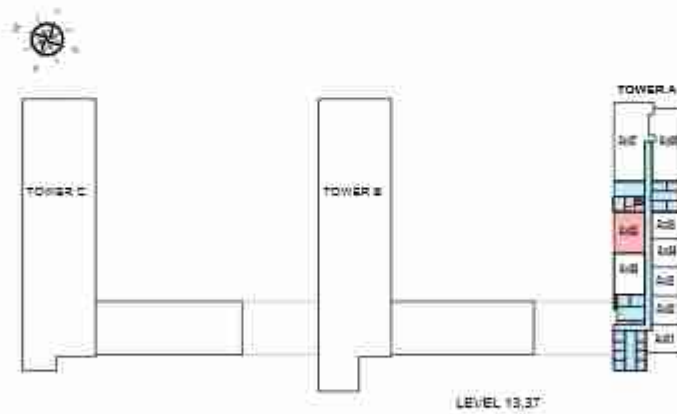
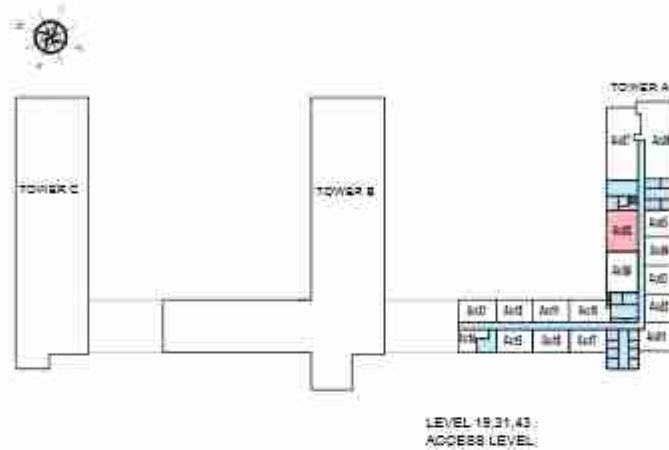
TOTAL SALEABLE AREA

SUITE = 1,034.61 SQ.FT.

YARD = 178.41 SQ.FT.

TOTAL = 1,213.02 SQ.FT.

 UNIT



List of unit numbers with this unit plan:

VIEWS

Ras Al Khor, Golf Course, Amenities

A1308, A1908

Ras Al Khor, Golf Course

A3108, A3708, A4308

Disclaimer: 1. All dimensions are in meters, measured to wall finishes. 2. All materials, dimensions & drawings are approximate. 3. Information is subject to change without notice, at developer's absolute discretion. 4. Actual areas may vary from the stated areas. 5. Drawing are not to scale. 6. All images used are for illustrative purpose only and do not represent the actual size, features, specifications, fittings and furnishings. 7. The developer reserves the right to make revisions/alterations, at its absolute discretion, without any liability whatsoever.

3 BEDROOM APARTMENT

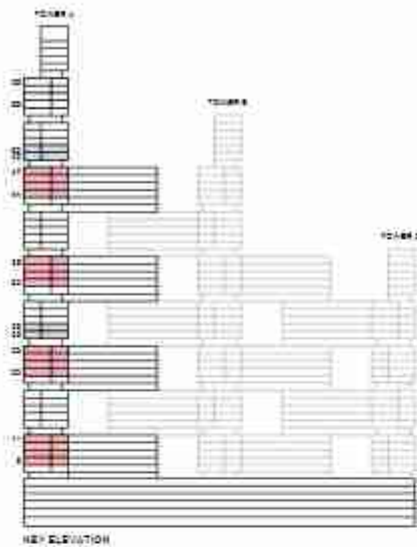
TYPE A (with maid room + balcony)

TOTAL SALEABLE AREA

SUITE = 1,642.57 SQ.FT.

BALCONY = 274.54 SQ.FT.

TOTAL = 1,917.11 SQ.FT.



List of unit numbers with this unit plan:

VIEWS

Downtown, Ras Al Khor, Creek, Golf Course, water body, Amenities

A807, A907, A1007, A1107, A2007, A2107, A2207, A2307

Downtown, Ras Al Khor, Creek, Golf Course, water body

A3207, A3307, A3407, A3507, A4407, A4507, A4607, A4707

Disclaimer: 1. All dimensions are in meters, measured to wall finishes. 2. All materials, dimensions & drawings are approximate. 3. Information is subject to change without notice, at developer's absolute discretion. 4. Actual areas may vary from the stated areas. 5. Drawing are not to scale. 6. All images used are for illustrative purpose only and do not represent the actual size, features, specifications, fittings and furnishings. 7. The developer reserves the right to make revisions/alterations, at its absolute discretion, without any liability whatsoever.

3 BEDROOM APARTMENT

TYPE A (with maid room + balcony)

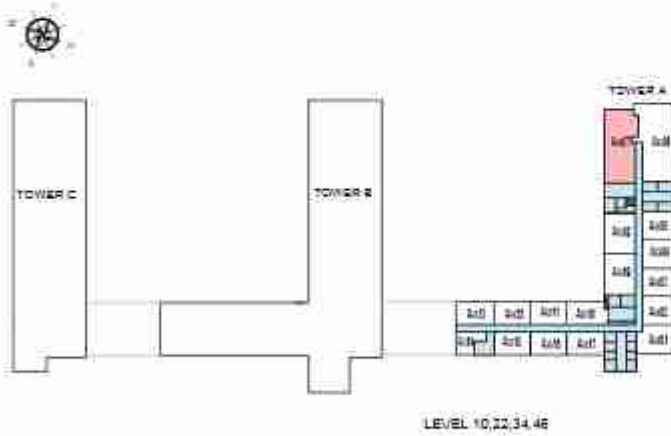
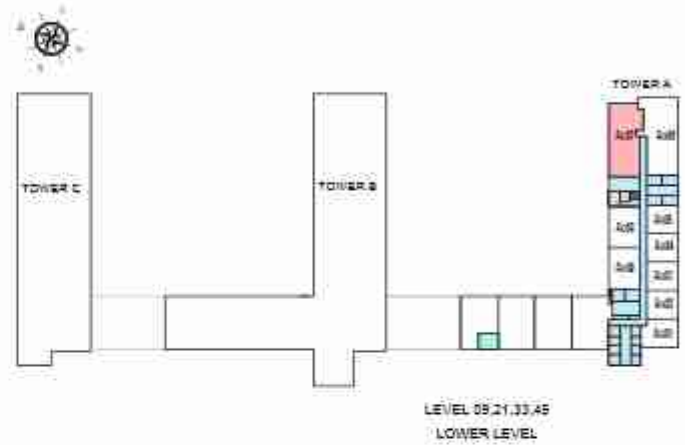
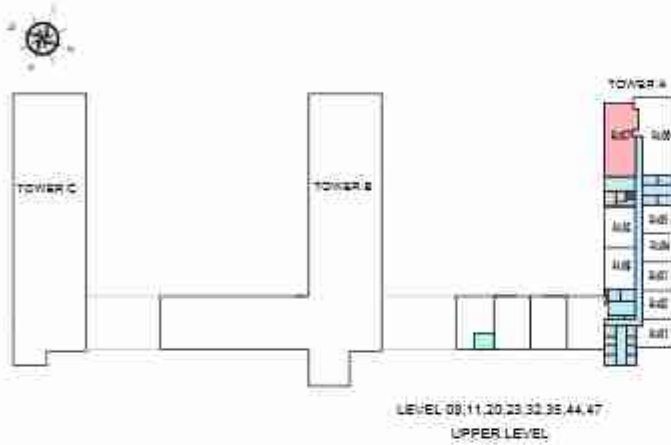
TOTAL SALEABLE AREA

SUITE = 1,642.57 SQ.FT.

BALCONY = 274.54 SQ.FT.

TOTAL = 1,917.11 SQ.FT.

 UNIT



List of unit numbers with this unit plan:

VIEWS

Downtown, Ras Al Khor, Creek, Golf Course, water body, Amenities

A807, A907, A1007, A1107, A2007, A2107, A2207, A2307

Downtown, Ras Al Khor, Creek, Golf Course, water body

A3207, A3307, A3407, A3507, A4407, A4507, A4607, A4707

Disclaimer: 1. All dimensions are in meters, measured to wall finishes. 2. All materials, dimensions & drawings are approximate. 3. Information is subject to change without notice, at developer's absolute discretion. 4. Actual areas may vary from the stated areas. 5. Drawing are not to scale. 6. All images used are for illustrative purpose only and do not represent the actual size, features, specifications, fittings and furnishings. 7. The developer reserves the right to make revisions/alterations, at its absolute discretion, without any liability whatsoever.

3 BEDROOM APARTMENT

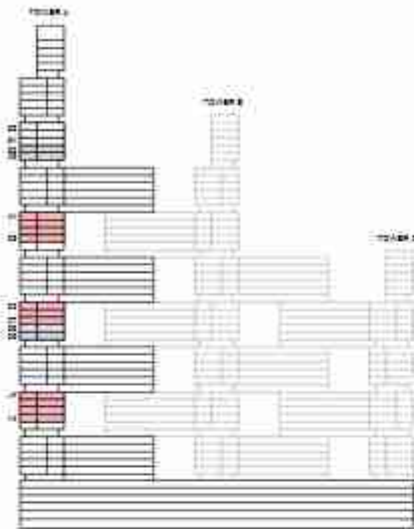
TYPE A (with maid room + balcony) VARIANT 1

TOTAL SALEABLE AREA

SUITE = 1,642.57 SQ.FT.

BALCONY = 274.54 SQ.FT.

TOTAL = 1,917.11 SQ.FT.



List of unit numbers with this unit plan:

VIEWS

Ras Al Khor, Creek, Golf Course

A1406, A1506, A1606, A1706, A2706, A2806, A2906, A3806, A3906, A4006, A4106

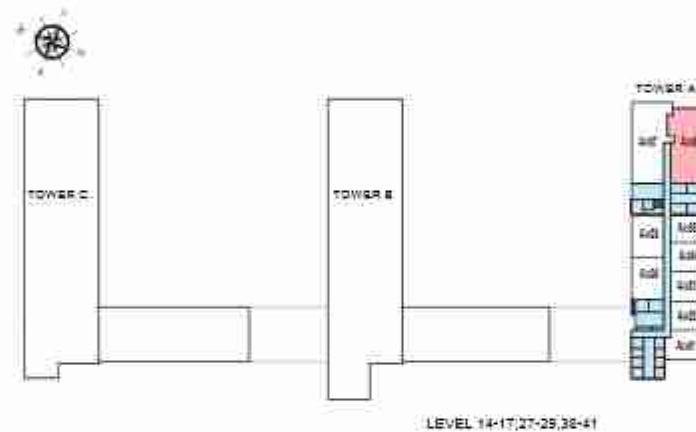
Disclaimer: 1. All dimensions are in meters, measured to wall finishes. 2. All materials, dimensions & drawings are approximate. 3. Information is subject to change without notice, at developer's absolute discretion. 4. Actual areas may vary from the stated area. 5. Drawing are not to scale. 6. All images used are for illustrative purpose only and do not represent the actual size, features, specifications, fittings and furnishings. 7. The developer reserves the right to make revisions/alterations, at its absolute discretion, without any liability whatsoever.

3 BEDROOM APARTMENT

TYPE A (with maid room + balcony) VARIANT 1

TOTAL SALEABLE AREA
SUITE = 1,642.57 SQ.FT.
BALCONY = 274.54 SQ.FT.
TOTAL = 1,917.11 SQ.FT.

 UNIT



List of unit numbers with this unit plan:

VIEWS

Ras Al Khair, Creek, Golf Course

A1406, A1506, A1606, A1706, A2706, A2806, A2906, A3806, A3906, A4006, A4106

Disclaimer: 1. All dimensions are in meters, measured to wall finishes. 2. All materials, dimensions & drawings are approximate. 3. Information is subject to change without notice, at developer's absolute discretion. 4. Actual areas may vary from the stated areas. 5. Drawing are not to scale. 6. All images used are for illustrative purpose only and do not represent the actual size, features, specifications, fittings and furnishings. 7. The developer reserves the right to make revisions/alterations, at its absolute discretion, without any liability whatsoever.

3 BEDROOM APARTMENT

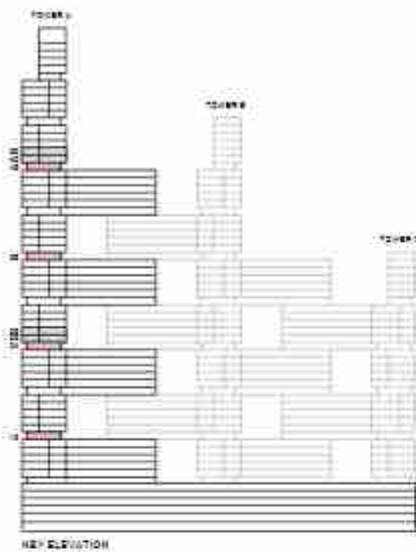
TYPE C (with store room and maid room + yard)

TOTAL SALEABLE AREA

SUITE = 1,708.66 SQ.FT.

YARD = 782.88 SQ.FT.

TOTAL = 2,491.54 SQ.FT.



REF ELEVATION

UNIT



List of unit numbers with this unit plan:

VIEWS

Downtown, Ras Al Khor, Creek, Golf Course, Waterbody
A1206, A2406, A3606, A4806

Disclaimer: 1. All dimensions are in meters, measured to wall finishes. 2. All materials, dimensions & drawings are approximate. 3. Information is subject to change without notice, at developer's absolute discretion. 4. Actual areas may vary from the stated areas. 5. Drawing are not to scale. 6. All images used are for illustrative purpose only and do not represent the actual size, features, specifications, fittings and furnishings. 7. The developer reserves the right to make revisions/alterations, at its absolute discretion, without any liability whatsoever.

3 BEDROOM APARTMENT

TYPE C (with store room and maid room + yard)

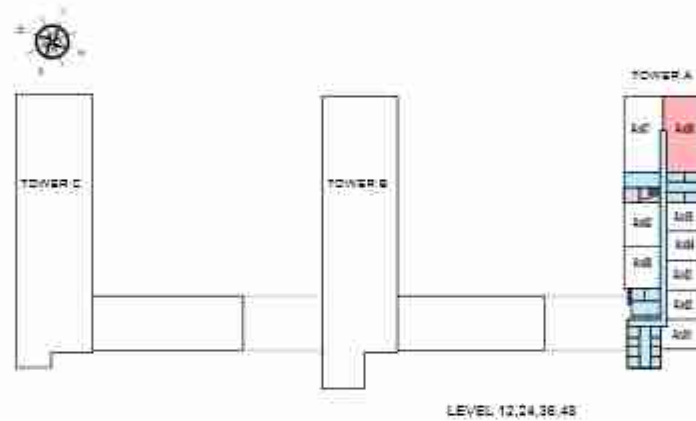
TOTAL SALEABLE AREA

SUITE = 1,708.66 SQ.FT.

YARD = 782.88 SQ.FT.

TOTAL = 2,491.54 SQ.FT.

 UNIT



List of unit numbers with this unit plan:

VIEWS

Downtown, Ras Al Khor, Creek, Golf Course, Waterbody
A1206, A2406, A3606, A4806

Disclaimer: 1. All dimensions are in meters, measured to wall finishes. 2. All materials, dimensions & drawings are approximate. 3. Information is subject to change without notice, at developer's absolute discretion. 4. Actual areas may vary from the stated areas. 5. Drawing are not to scale. 6. All images used are for illustrative purpose only and do not represent the actual size, features, specifications, fittings and furnishings. 7. The developer reserves the right to make revisions/alterations, at its absolute discretion, without any liability whatsoever.

3 BEDROOM APARTMENT

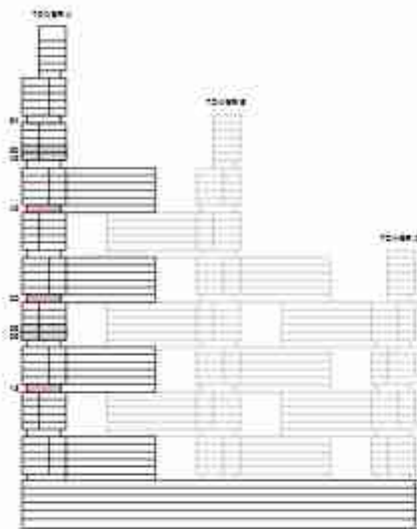
TYPE C (with store room and maid room + yard) VARIANT 1

TOTAL SALEABLE AREA

SUITE = 1,708.66 SQ.FT.

YARD = 782.88 SQ.FT.

TOTAL = 2,491.54 SQ.FT.



NE ELEVATION



List of unit numbers with this unit plan:

VIEWS

Downtown, Ras Al Khor, Creek, Golf Course, water body, Amenities
A1B07

Downtown, Ras Al Khor, Creek, Golf Course, water body
A3D07, A4207

Disclaimer: 1. All dimensions are in meters, measured to wall finishes. 2. All materials, dimensions & drawings are approximate. 3. Information is subject to change without notice, at developer's absolute discretion. 4. Actual areas may vary from the stated areas. 5. Drawing are not to scale. 6. All images used are for illustrative purpose only and do not represent the actual size, features, specifications, fittings and furnishings. 7. The developer reserves the right to make revisions/alterations, at its absolute discretion, without any liability whatsoever.

3 BEDROOM APARTMENT

TYPE C (with store room and maid room + yard) VARIANT 1

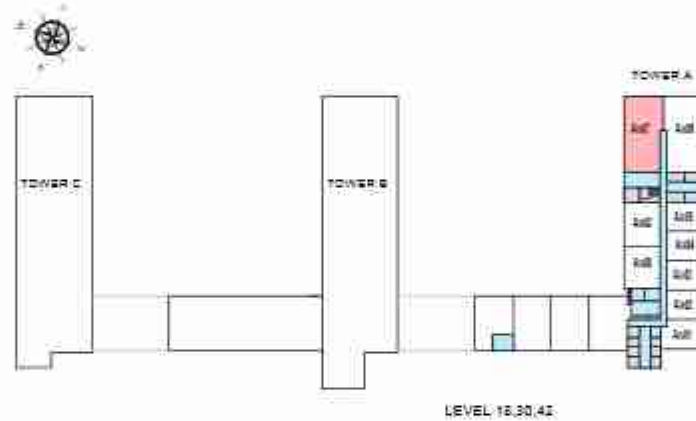
TOTAL SALEABLE AREA

SUITE = 1,708.66 SQ.FT.

YARD = 782.88 SQ.FT.

TOTAL = 2,491.54 SQ.FT.

 UNIT



List of unit numbers with this unit plan:

VIEWS

Downtown, Ras Al Khor, Creek, Golf Course, water body, Amenities

A1807

Downtown, Ras Al Khor, Creek, Golf Course, water body

A3007, A4207

Disclaimer: 1. All dimensions are in meters, measured to wall finishes. 2. All materials, dimensions & drawings are approximate. 3. Information is subject to change without notice, at developer's absolute discretion. 4. Actual areas may vary from the stated areas. 5. Drawing are not to scale. 6. All images used are for illustrative purpose only and do not represent the actual size, features, specifications, fittings and furnishings. 7. The developer reserves the right to make revisions/alterations, at its absolute discretion, without any liability whatsoever.

3 BEDROOM APARTMENT

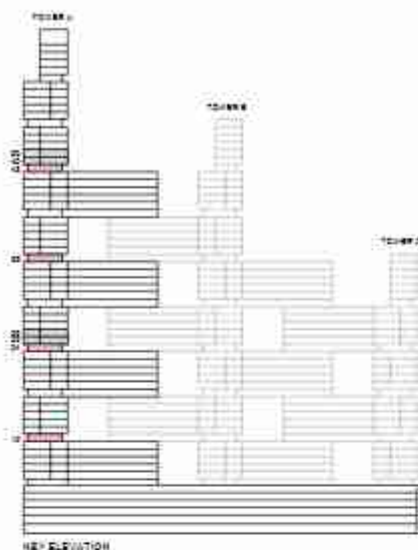
TYPE D (with store room and maid room + yard)

TOTAL SALEABLE AREA

SUITE = 1,708.66 SQ.FT.

YARD = 536.03 SQ.FT.

TOTAL = 2,244.69 SQ.FT.



REF ELEVATION



List of unit numbers with this unit plan:

VIEWS

Downtown, Ras Al Khor, Creek, Golf Course, water body, Amenities
A1207, A2107

Downtown, Ras Al Khor, Creek, Golf Course, water body
A3607, A4807

Disclaimer: 1. All dimensions are in meters, measured to wall finishes. 2. All materials, dimensions & drawings are approximate. 3. Information is subject to change without notice, at developer's absolute discretion. 4. Actual areas may vary from the stated areas. 5. Drawing are not to scale. 6. All images used are for illustrative purpose only and do not represent the actual size, features, specifications, fittings and furnishings. 7. The developer reserves the right to make revisions/alterations, at its absolute discretion, without any liability whatsoever.

3 BEDROOM APARTMENT

TYPE D (with store room and maid room + yard)

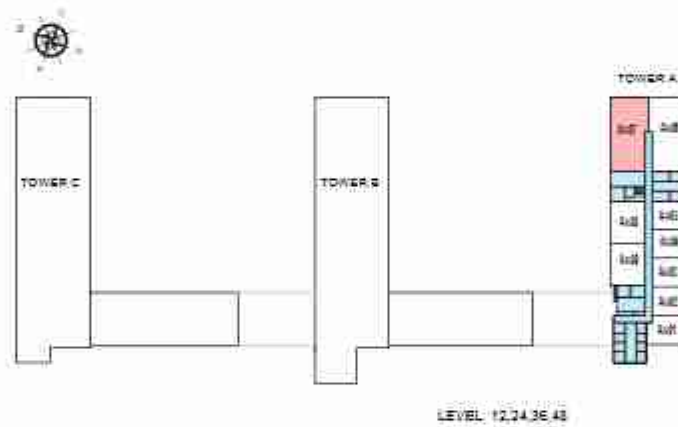
TOTAL SALEABLE AREA

SUITE = 1,708.66 SQ.FT.

YARD = 536.03 SQ.FT.

TOTAL = 2,244.69 SQ.FT.

 UNIT



List of unit numbers with this unit plan:

VIEWS

Downtown, Ras Al Khor, Creek, Golf Course, water body, Amenities

A1207, A2107

Downtown, Ras Al Khor, Creek, Golf Course, water body

A3607, A4807

Disclaimer: 1. All dimensions are in meters, measured to wall finishes. 2. All materials, dimensions & drawings are approximate. 3. Information is subject to change without notice, at developer's absolute discretion. 4. Actual areas may vary from the stated areas. 5. Drawing are not to scale. 6. All images used are for illustrative purpose only and do not represent the actual size, features, specifications, fittings and furnishings. 7. The developer reserves the right to make revisions/alterations, at its absolute discretion, without any liability whatsoever.

3 BEDROOM APARTMENT

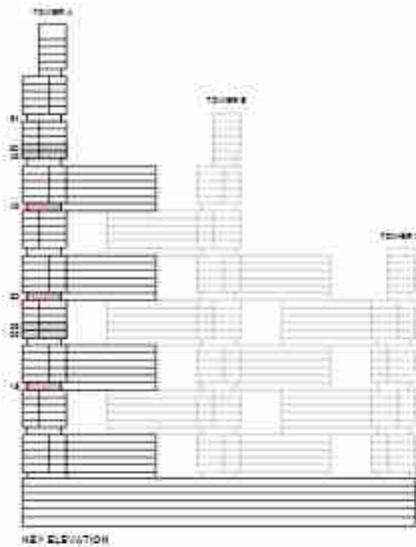
TYPE D (with store room and maid room + yard) VARIANT 1

TOTAL SALEABLE AREA

SUITE = 1,708.66 SQ.FT.

YARD = 536.03 SQ.FT.

TOTAL = 2,244.69 SQ.FT.



REF ELEVATION

UNIT



List of unit numbers with this unit plan:

VIEWS

Downtown, Ras Al Khor, Creek, Golf Course, water body
A1806, A3006, A4206

Disclaimer: 1. All dimensions are in meters, measured to wall finishes. 2. All materials, dimensions & drawings are approximate. 3. Information is subject to change without notice, at developer's absolute discretion. 4. Actual areas may vary from the stated areas. 5. Drawing are not to scale. 6. All images used are for illustrative purpose only and do not represent the actual size, features, specifications, fittings and furnishings. 7. The developer reserves the right to make revisions/alterations, at its absolute discretion, without any liability whatsoever.

3 BEDROOM APARTMENT

TYPE D (with store room and maid room + yard) VARIANT 1

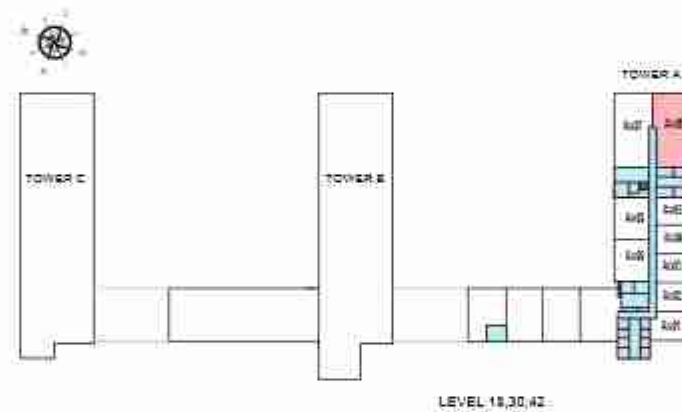
TOTAL SALEABLE AREA

SUITE = 1,708.66 SQ.FT.

YARD = 536.03 SQ.FT.

TOTAL = 2,244.69 SQ.FT.

 UNIT



List of unit numbers with this unit plan:

VIEWS

Downtown, Ras Al Khor, Creek, Golf Course, water body
A1806, A3006, A4206

Disclaimer: 1. All dimensions are in meters, measured to wall finishes. 2. All materials, dimensions & drawings are approximate. 3. Information is subject to change without notice, at developer's absolute discretion. 4. Actual areas may vary from the stated areas. 5. Drawing are not to scale. 6. All images used are for illustrative purpose only and do not represent the actual size, features, specifications, fittings and furnishings. 7. The developer reserves the right to make revisions/alterations, at its absolute discretion, without any liability whatsoever.

3 BEDROOM APARTMENT

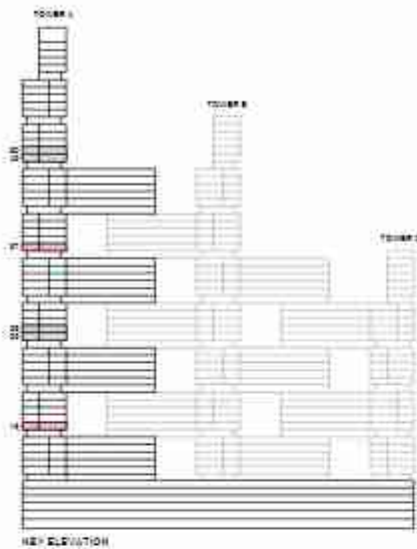
TYPE E (with maid room + yard)

TOTAL SALEABLE AREA

SUITE = 1,642.57 SQ.FT.

YARD = 539.66 SQ.FT.

TOTAL = 2,182.23 SQ.FT.



UNIT



List of unit numbers with this unit plan:

VIEWS

Ris Al Khor, Creek, Golf Course
A1306, A3706

Disclaimer: 1. All dimensions are in meters, measured to wall finishes. 2. All materials, dimensions & drawings are approximate. 3. Information is subject to change without notice, at developer's absolute discretion. 4. Actual areas may vary from the stated areas. 5. Drawing are not to scale. 6. All images used are for illustrative purpose only and do not represent the actual size, features, specifications, fittings and furnishings. 7. The developer reserves the right to make revisions/alterations, at its absolute discretion, without any liability whatsoever.

3 BEDROOM APARTMENT

TYPE E (with maid room + yard)

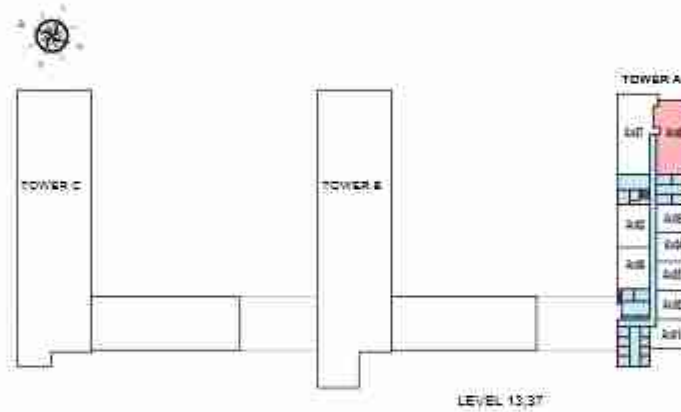
TOTAL SALEABLE AREA

SUITE = 1,642.57 SQ.FT.

YARD = 539.66 SQ.FT.

TOTAL = 2,182.23 SQ.FT.

 UNIT



List of unit numbers with this unit plan:

VIEWS

Ras Al Khair, Creek, Golf Course

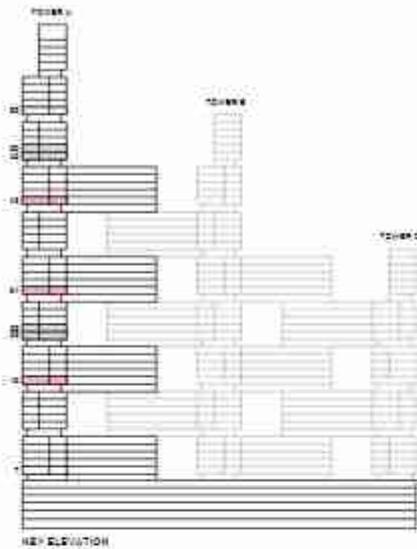
A1306, A3706

Disclaimer: 1. All dimensions are in meters, measured to wall finishes. 2. All materials, dimensions & drawings are approximate. 3. Information is subject to change without notice, at developer's absolute discretion. 4. Actual areas may vary from the stated areas. 5. Drawing are not to scale. 6. All images used are for illustrative purpose only and do not represent the actual size, features, specifications, fittings and furnishings. 7. The developer reserves the right to make revisions/alterations, at its absolute discretion, without any liability whatsoever.

3 BEDROOM APARTMENT

TYPE E (with maid room + yard) VARIANT 1

TOTAL SALEABLE AREA
 SUITE = 1,642.57 SQ.FT.
 YARD = 539.66 SQ.FT.
 TOTAL = 2,182.23 SQ.FT.



List of unit numbers with this unit plan:

VIEWS

Downtown, Ras Al Khor, Creek, Golf Course, water body, Amenities
 A1907

Downtown, Ras Al Khor, Creek, Golf Course, water body
 A3107, A4307

Disclaimer: 1. All dimensions are in meters, measured to wall finishes. 2. All materials, dimensions & drawings are approximate. 3. Information is subject to change without notice, at developer's absolute discretion. 4. Actual areas may vary from the stated areas. 5. Drawing are not to scale. 6. All images used are for illustrative purpose only and do not represent the actual size, features, specifications, fittings and furnishings. 7. The developer reserves the right to make revisions/alterations, at its absolute discretion, without any liability whatsoever.

3 BEDROOM APARTMENT

TYPE E (with maid room + yard) VARIANT 1

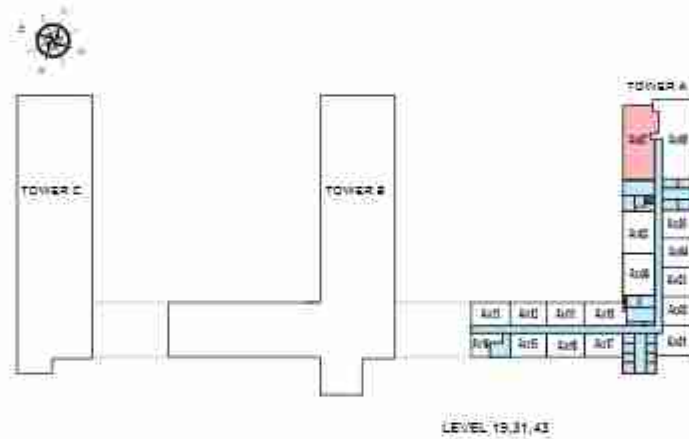
TOTAL SALEABLE AREA

SUITE = 1,642.57 SQ.FT.

YARD = 539.66 SQ.FT.

TOTAL = 2,182.23 SQ.FT.

 UNIT



List of unit numbers with this unit plan:

VIEWS

Downtown, Ras Al Khor, Creek, Golf Course, water body, Amenities

A1907

Downtown, Ras Al Khor, Creek, Golf Course, water body

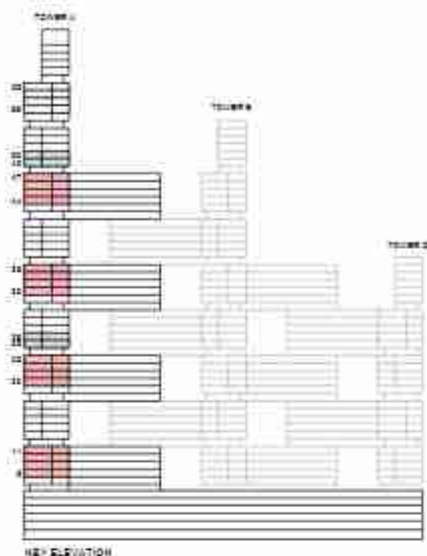
A3107, A4307

Disclaimer: 1. All dimensions are in meters, measured to wall finishes. 2. All materials, dimensions & drawings are approximate. 3. Information is subject to change without notice, at developer's absolute discretion. 4. Actual areas may vary from the stated areas. 5. Drawing are not to scale. 6. All images used are for illustrative purpose only and do not represent the actual size, features, specifications, fittings and furnishings. 7. The developer reserves the right to make revisions/alterations, at its absolute discretion, without any liability whatsoever.

4 BEDROOM APARTMENT

TYPE A (with store room, maid room and powder room + balcony)

TOTAL SALEABLE AREA
 SUITE = 2,080.88 SQ.FT.
 BALCONY = 196.34 SQ.FT.
 TOTAL = 2,277.22 SQ.FT.



List of unit numbers with this unit plan:

VIEWS

Downtown, Ras Al Khor, Creek, Golf Course, waterbody

A906, A906, A1006, A1106, A2006, A2106, A2206, A2306, A3206, A3306, A3406, A3506, A4406, A4506, A4606, A4706

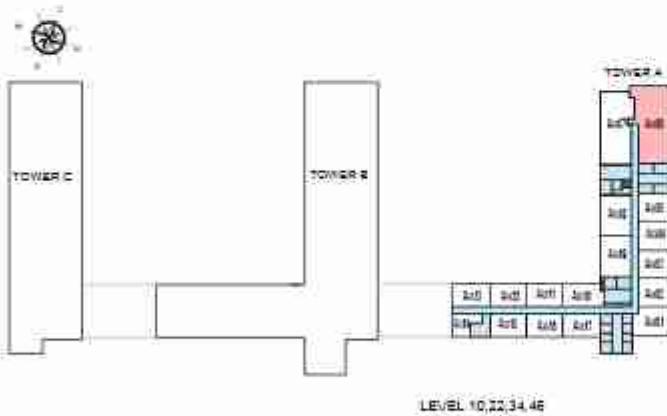
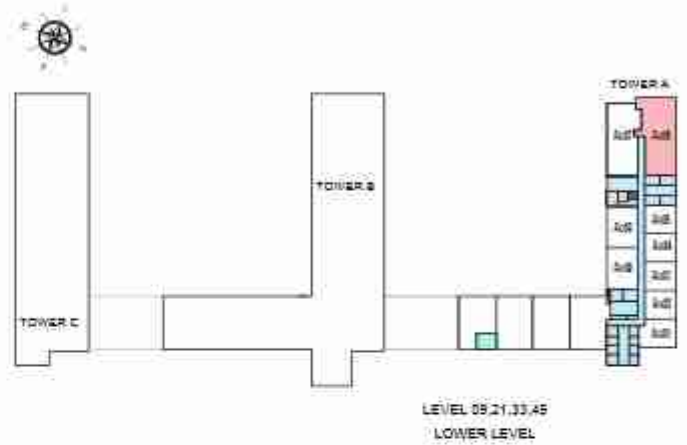
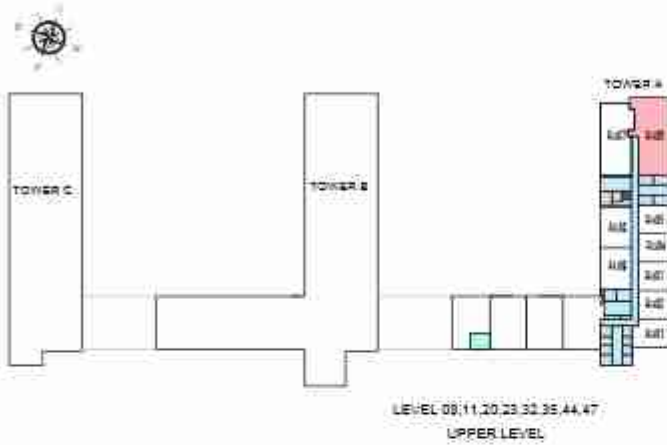
Disclaimer: 1. All dimensions are in meters, measured to wall finishes. 2. All materials, dimensions & drawings are approximate. 3. Information is subject to change without notice, at developer's absolute discretion. 4. Actual areas may vary from the stated areas. 5. Drawing are not to scale. 6. All images used are for illustrative purpose only and do not represent the actual size, features, specifications, fittings and furnishings. 7. The developer reserves the right to make revisions/alterations, at its absolute discretion, without any liability whatsoever.

4 BEDROOM APARTMENT

TYPE A (with store room, maid room and powder room + balcony)

TOTAL SALEABLE AREA
 SUITE = 2,080.88 SQ.FT.
 BALCONY = 196.34 SQ.FT.
 TOTAL = 2,277.22 SQ.FT.

 UNIT



List of unit numbers with this unit plan:

VIEWS

Downtown, Ras Al Khor, Creek, Golf Course, waterbody

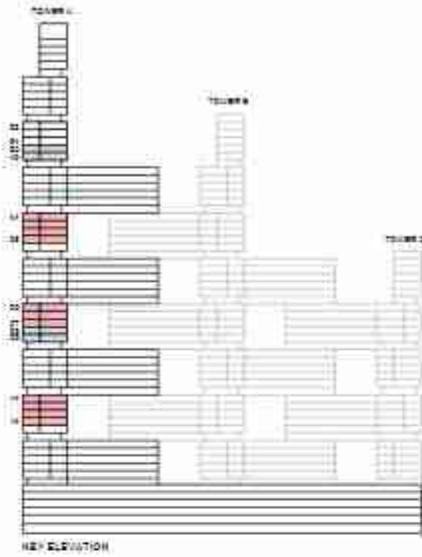
A906, A906, A1006, A1106, A2006, A2106, A2206, A2306, A3206, A3306, A3406, A3506, A4406, A4506, A4606, A4706

Disclaimer: 1. All dimensions are in meters, measured to wall finishes. 2. All materials, dimensions & drawings are approximate. 3. Information is subject to change without notice, at developer's absolute discretion. 4. Actual areas may vary from the stated areas. 5. Drawing are not to scale. 6. All images used are for illustrative purpose only and do not represent the actual size, features, specifications, fittings and furnishings. 7. The developer reserves the right to make revisions/alterations, at its absolute discretion, without any liability whatsoever.

4 BEDROOM APARTMENT

TYPE A (with store room, maid room and powder room + balcony) VARIANT 1

TOTAL SALEABLE AREA
 SUITE = 2,080.88 SQ.FT.
 BALCONY = 196.34 SQ.FT.
 TOTAL = 2,277.22 SQ.FT.



List of unit numbers with this unit plan:

VIEWS

Downtown, Ras Al Khor, Creek, Golf Course, water body, Amenities
 A1407, A1507, A1607, A1707

Downtown, Ras Al Khor, Creek, Golf Course, water body
 A2707, A2807, A2907, A3807, A3907, A4007, A4107

Disclaimer: 1. All dimensions are in meters, measured to wall finishes. 2. All materials, dimensions & drawings are approximate. 3. Information is subject to change without notice, at developer's absolute discretion. 4. Actual areas may vary from the stated areas. 5. Drawing are not to scale. 6. All images used are for illustrative purpose only and do not represent the actual size, features, specifications, fittings and furnishings. 7. The developer reserves the right to make revisions/alterations, at its absolute discretion, without any liability whatsoever.

4 BEDROOM APARTMENT

TYPE A (with store room, maid room and powder room + balcony) VARIANT 1

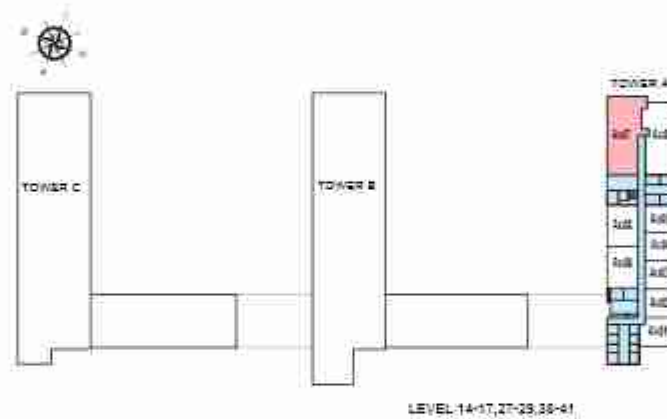
TOTAL SALEABLE AREA

SUITE = 2,080.88 SQ.FT.

BALCONY = 196.34 SQ.FT.

TOTAL = 2,277.22 SQ.FT.

 UNIT



LEVEL 14-17, 27-29, 38-41

List of unit numbers with this unit plan:

VIEWS

Downtown, Ras Al Khor, Creek, Golf Course, water body, Amenities

A1407, A1507, A1607, A1707

Downtown, Ras Al Khor, Creek, Golf Course, water body

A2707, A2807, A2907, A3807, A3907, A4007, A4107

Disclaimer: 1. All dimensions are in meters, measured to wall finishes. 2. All materials, dimensions & drawings are approximate. 3. Information is subject to change without notice, at developer's absolute discretion. 4. Actual areas may vary from the stated areas. 5. Drawing are not to scale. 6. All images used are for illustrative purpose only and do not represent the actual size, features, specifications, fittings and furnishings. 7. The developer reserves the right to make revisions/alterations, at its absolute discretion, without any liability whatsoever.

4 BEDROOM APARTMENT

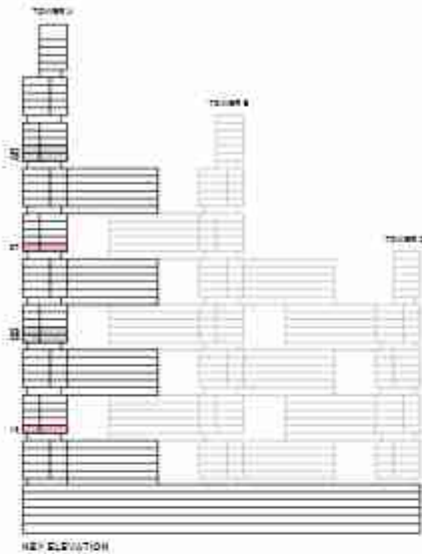
TYPE B (with store room, maid room and powder room + yard)

TOTAL SALEABLE AREA

SUITE = 2,084.43 SQ.FT.

YARD = 477.92 SQ.FT.

TOTAL = 2,562.35 SQ.FT.



List of unit numbers with this unit plan:

VIEWS

Downtown, Ras Al Khor, Creek, Golf Course, water body, Amenities
A1307

Downtown, Ras Al Khor, Creek, Golf Course, water body
A3707

Disclaimer: 1. All dimensions are in meters, measured to wall finishes. 2. All materials, dimensions & drawings are approximate. 3. Information is subject to change without notice, at developer's absolute discretion. 4. Actual areas may vary from the stated areas. 5. Drawing are not to scale. 6. All images used are for illustrative purpose only and do not represent the actual size, features, specifications, fittings and furnishings. 7. The developer reserves the right to make revisions/alterations, at its absolute discretion, without any liability whatsoever.

4 BEDROOM APARTMENT

TYPE B (with store room, maid room and powder room + yard)

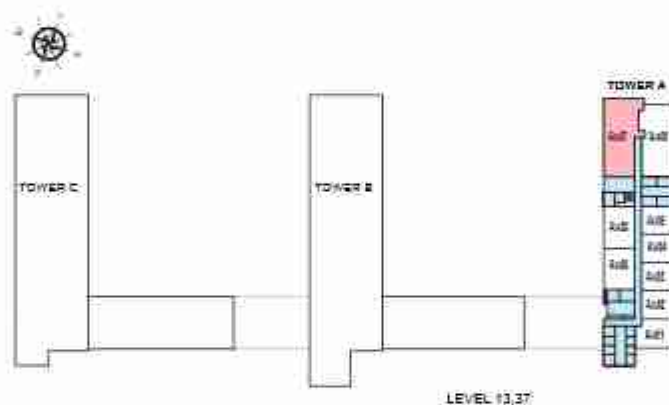
TOTAL SALEABLE AREA

SUITE = 2,084.43 SQ.FT.

YARD = 477.92 SQ.FT.

TOTAL = 2,562.35 SQ.FT.

 UNIT



List of unit numbers with this unit plan:

VIEWS

Downtown, Ras Al Khor, Creek, Golf Course, water body, Amenities

A1307

Downtown, Ras Al Khor, Creek, Golf Course, water body

A3707

Disclaimer: 1. All dimensions are in meters, measured to wall finishes. 2. All materials, dimensions & drawings are approximate. 3. Information is subject to change without notice, at developer's absolute discretion. 4. Actual areas may vary from the stated areas. 5. Drawing are not to scale. 6. All images used are for illustrative purpose only and do not represent the actual site, features, specifications, fittings and furnishings. 7. The developer reserves the right to make revisions/alterations, at its absolute discretion, without any liability whatsoever.

4 BEDROOM APARTMENT

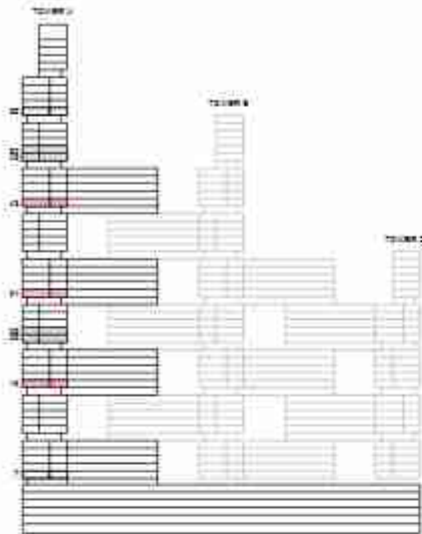
TYPE B (with store room, maid room and powder room + yard) VARIANT 1

TOTAL SALEABLE AREA

SUITE = 2,084.43 SQ.FT.

YARD = 477.32 SQ.FT.

TOTAL = 2,562.35 SQ.FT.



REF ELEVATION



List of unit numbers with this unit plan:

VIEWS

Downtown, Ras Al Khor, Creek, Golf Course, waterbody
A1906, A3106, A4306

Disclaimer: 1. All dimensions are in meters, measured to wall finishes. 2. All materials, dimensions & drawings are approximate. 3. Information is subject to change without notice, at developer's absolute discretion. 4. Actual areas may vary from the stated areas. 5. Drawing are not to scale. 6. All images used are for illustrative purpose only and do not represent the actual size, features, specifications, fittings and furnishings. 7. The developer reserves the right to make revisions/alterations, at its absolute discretion, without any liability whatsoever.

4 BEDROOM APARTMENT

TYPE B (with store room, maid room and powder room + yard) VARIANT 1

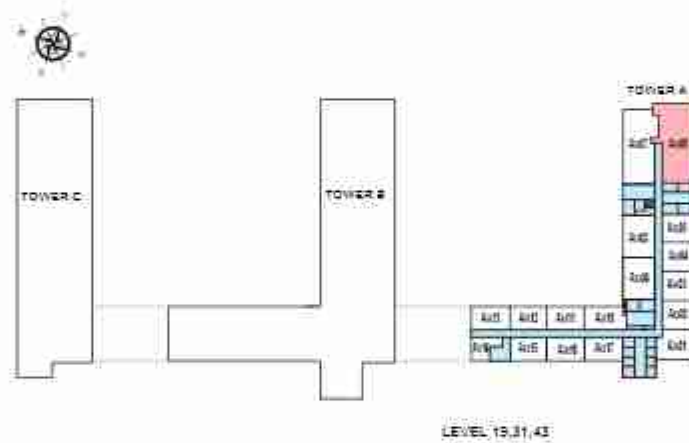
TOTAL SALEABLE AREA

SUITE = 2,084.43 SQ.FT.

YARD = 477.32 SQ.FT.

TOTAL = 2,562.35 SQ.FT.

 UNIT



List of unit numbers with this unit plan:

VIEWS

Downtown, Ras Al Khayr, Creek, Golf Course, waterbody
A1906, A3106, A4306

Disclaimer: 1. All dimensions are in meters, measured to wall finishes. 2. All materials, dimensions & drawings are approximate. 3. Information is subject to change without notice, at developer's absolute discretion. 4. Actual areas may vary from the stated areas. 5. Drawing are not to scale. 6. All images used are for illustrative purpose only and do not represent the actual size, features, specifications, fittings and furnishings. 7. The developer reserves the right to make revisions/alterations, at its absolute discretion, without any liability whatsoever.

2 BEDROOM DUPLEX APARTMENT

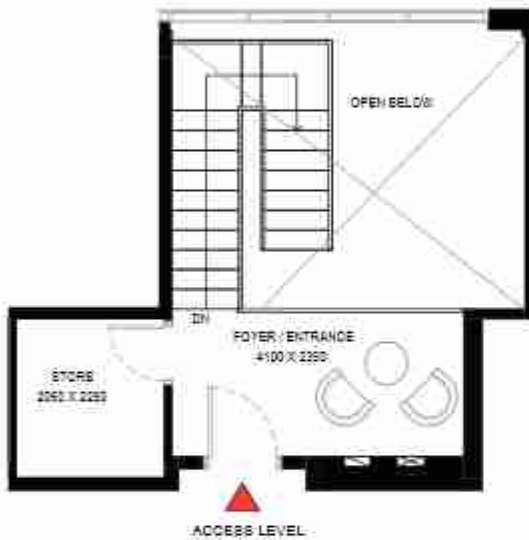
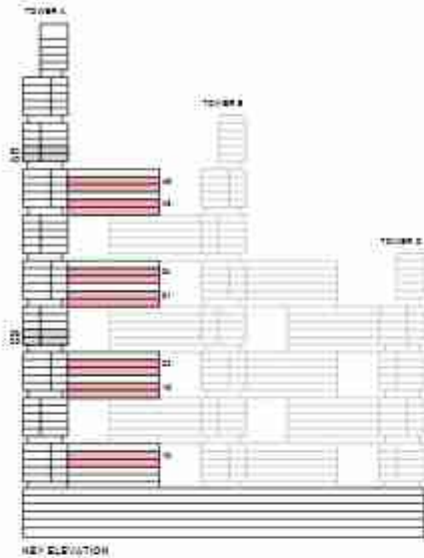
TYPE A (with store room, maid room and powder room + balcony)

TOTAL SALEABLE AREA

SUITE = 1,701.76 SQ.FT.

BALCONY = 178.96 SQ.FT.

TOTAL = 1,880.72 SQ.FT.



List of unit numbers with this unit plan:

VIEWS

Ras Al Khor, Golf Course, Amenities
A1014, A1814, A2214

Ras Al Khor, Golf Course
A3114, A3414, A4314, A4614

Disclaimer: 1. All dimensions are in meters, measured to wall finishes. 2. All materials, dimensions & drawings are approximate. 3. Information is subject to change without notice, at developer's absolute discretion. 4. Actual areas may vary from the stated areas. 5. Drawing are not to scale. 6. All images used are for illustrative purpose only and do not represent the actual size, features, specifications, fittings and furnishings. 7. The developer reserves the right to make revisions/alterations, at its absolute discretion, without any liability whatsoever.

2 BEDROOM DUPLEX APARTMENT

TYPE A (with store room, maid room and powder room + balcony)

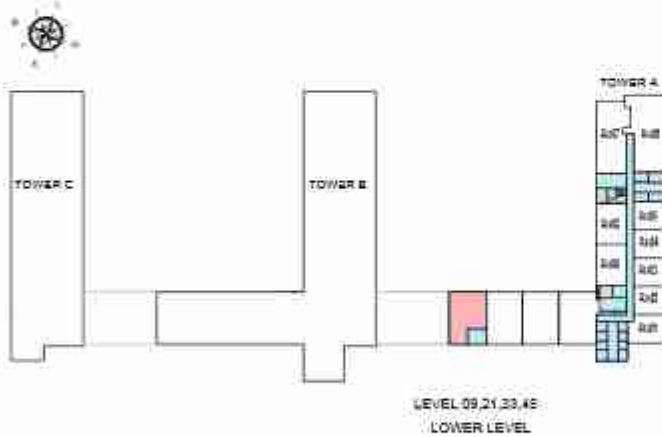
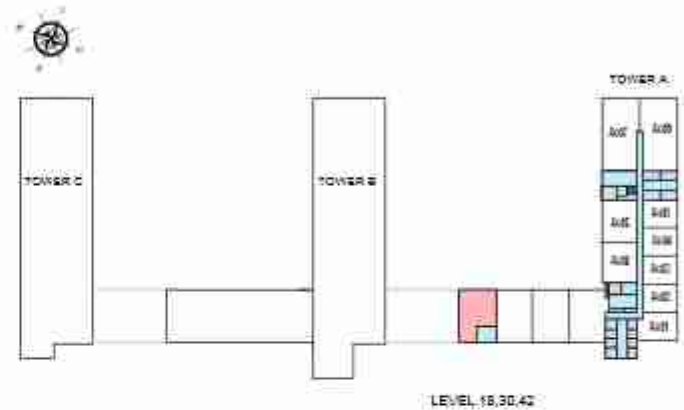
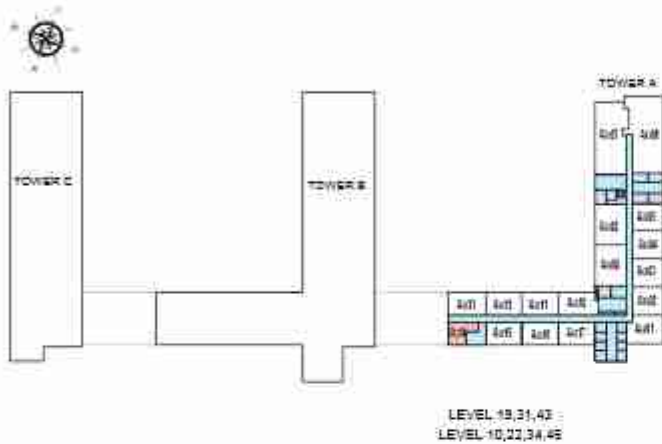
TOTAL SALEABLE AREA

SUITE = 1,701.76 SQ.FT.

BALCONY = 178.96 SQ.FT.

TOTAL = 1,880.72 SQ.FT.

 UNIT



List of unit numbers with this unit plan:

VIEWS

Ras Al Khor, Golf Course, Amenities
A1014, A1814, A2214

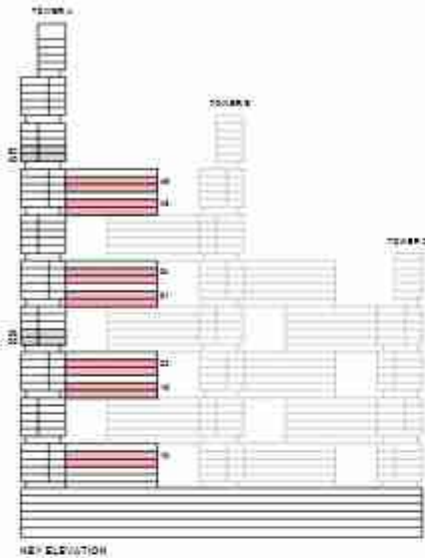
Ras Al Khor, Golf Course
A3114, A3414, A4314, A4614

Disclaimer: 1. All dimensions are in meters, measured to wall finishes. 2. All materials, dimensions & drawings are approximate. 3. Information is subject to change without notice, at developer's absolute discretion. 4. Actual areas may vary from the stated areas. 5. Drawing are not to scale. 6. All images used are for illustrative purpose only and do not represent the actual size, features, specifications, fittings and furnishings. 7. The developer reserves the right to make revisions/alterations, at its absolute discretion, without any liability whatsoever.

4 BEDROOM DUPLEX APARTMENT

TYPE A (with maid room and powder room + balcony)

TOTAL SALEABLE AREA
 SUITE = 2,176.53 SQ.FT.
 BALCONY = 176.25 SQ.FT.
 TOTAL = 2,352.78 SQ.FT.



List of unit numbers with this unit plan:

VIEWS

Ras Al Khor, Golf Course, Amenities
 A1015, A1915, A2215

Ras Al Khor, Golf Course
 A3115, A3415, A4315, A4615

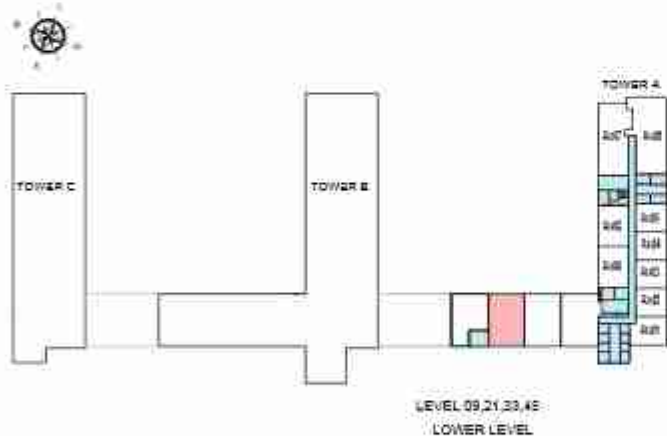
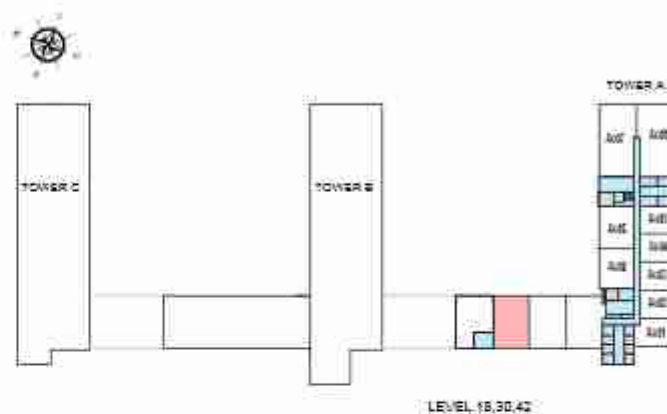
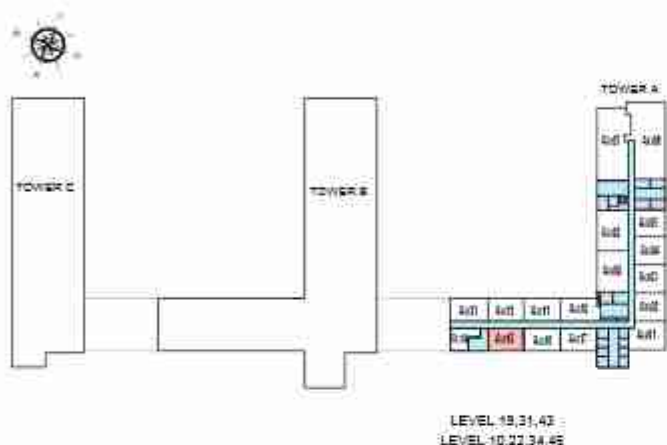
Disclaimer: 1. All dimensions are in meters, measured to wall finishes. 2. All materials, dimensions & drawings are approximate. 3. Information is subject to change without notice, at developer's absolute discretion. 4. Actual areas may vary from the stated areas. 5. Drawing are not to scale. 6. All images used are for illustrative purpose only and do not represent the actual size, features, specifications, fittings and furnishings. 7. The developer reserves the right to make revisions/alterations, at its absolute discretion, without any liability whatsoever.

4 BEDROOM DUPLEX APARTMENT

TYPE A (with maid room and powder room + balcony)

TOTAL SALEABLE AREA
 SUITE = 2,176.53 SQ.FT.
 BALCONY = 176.25 SQ.FT.
 TOTAL = 2,352.78 SQ.FT.

 UNIT



List of unit numbers with this unit plan:

VIEWS

Ras Al Khor, Golf Course, Amenities
 A1015, A1915, A2215

Ras Al Khor, Golf Course
 A3115, A3415, A4315, A4615

Disclaimer: 1. All dimensions are in meters, measured to wall finishes. 2. All materials, dimensions & drawings are approximate. 3. Information is subject to change without notice, at developer's absolute discretion. 4. Actual areas may vary from the stated areas. 5. Drawing are not to scale. 6. All images used are for illustrative purpose only and do not represent the actual size, features, specifications, fittings and furnishings. 7. The developer reserves the right to make revisions/alterations, at its absolute discretion, without any liability whatsoever.

4 BEDROOM DUPLEX APARTMENT

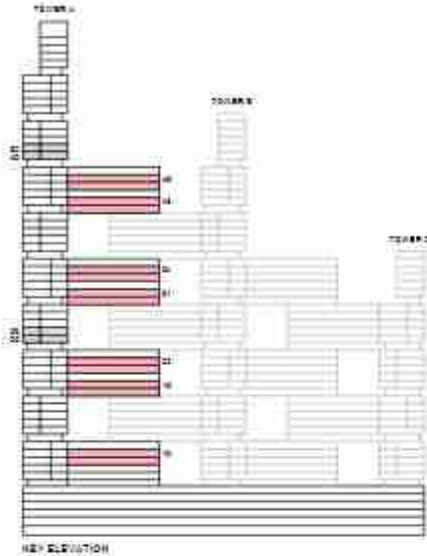
TYPE A (with maid room and powder room + balcony) VARIANT 1

TOTAL SALEABLE AREA

SUITE = 2,172.85 SQ.FT.

BALCONY = 176.25 SQ.FT.

TOTAL = 2,349.10 SQ.FT.



List of unit numbers with this unit plan:

VEWS

Ras Al Khor, Golf Course, Amenities
A1016, A1816, A2216

Ras Al Khor, Golf Course
A3116, A3416, A4316, A4616

Disclaimer: 1. All dimensions are in meters, measured to wall finishes. 2. All materials, dimensions & drawings are approximate. 3. Information is subject to change without notice, at developer's absolute discretion. 4. Actual areas may vary from the stated areas. 5. Drawing are not to scale. 6. All images used are for illustrative purpose only and do not represent the actual size, features, specifications, fittings and furnishings. 7. The developer reserves the right to make revisions/alterations, at its absolute discretion, without any liability whatsoever.

4 BEDROOM DUPLEX APARTMENT

TYPE A (with maid room and powder room + balcony) VARIANT 1

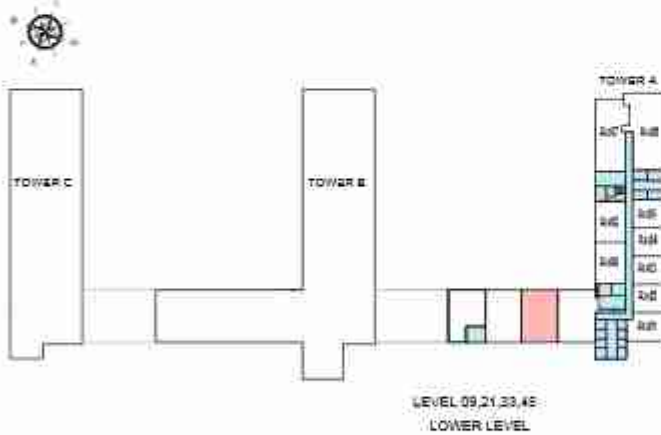
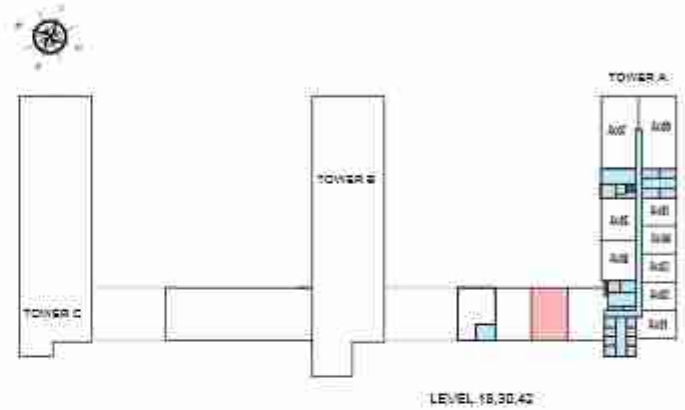
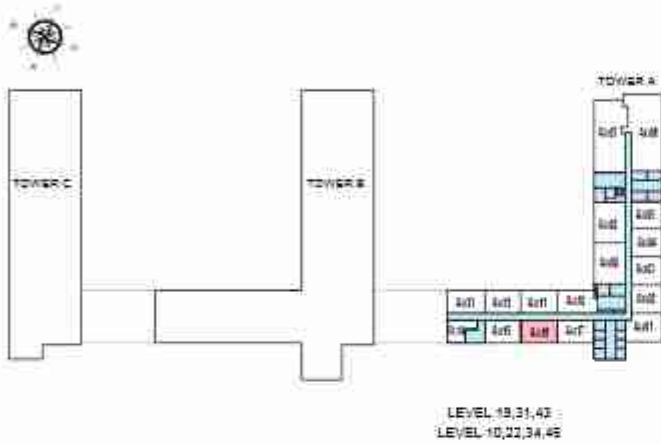
TOTAL SALEABLE AREA

SUITE = 2,172.85 SQ.FT.

BALCONY = 176.25 SQ.FT.

TOTAL = 2,349.10 SQ.FT.

 UNIT



List of unit numbers with this unit plan:

VIEWS

Ras Al Khor, Golf Course, Amenities

A1016, A1916, A2216

Ras Al Khor, Golf Course

A3116, A3416, A4316, A4616

Disclaimer: 1. All dimensions are in meters, measured to wall finishes. 2. All materials, dimensions & drawings are approximate. 3. Information is subject to change without notice, at developer's absolute discretion. 4. Actual areas may vary from the stated areas. 5. Drawing are not to scale. 6. All images used are for illustrative purpose only and do not represent the actual size, features, specifications, fittings and furnishings. 7. The developer reserves the right to make revisions/alterations, at its absolute discretion, without any liability whatsoever.

4 BEDROOM DUPLEX APARTMENT

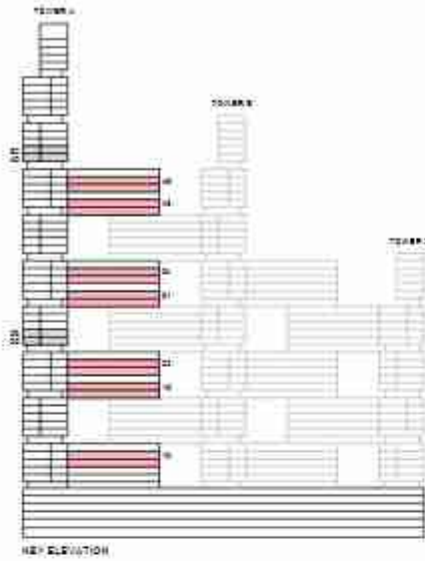
TYPE A1 (with maid room and powder room + balcony)

TOTAL SALEABLE AREA

SUITE = 2,227.74 SQ.FT.

BALCONY = 173.33 SQ.FT.

TOTAL = 2,401.07 SQ.FT.



List of unit numbers with this unit plan:

VIEWS

Ras Al Khor, Golf Course, Amenities
A1017, A1917, A2217

Ras Al Khor, Golf Course
A3117, A3417, A4317, A4617

Disclaimer: 1. All dimensions are in meters, measured to wall finishes. 2. All materials, dimensions & drawings are approximate. 3. Information is subject to change without notice, at developer's absolute discretion. 4. Actual areas may vary from the stated areas. 5. Drawing are not to scale. 6. All images used are for illustrative purpose only and do not represent the actual size, features, specifications, fittings and furnishings. 7. The developer reserves the right to make revisions/alterations, at its absolute discretion, without any liability whatsoever.

4 BEDROOM DUPLEX APARTMENT

TYPE A1 (with maid room and powder room + balcony)

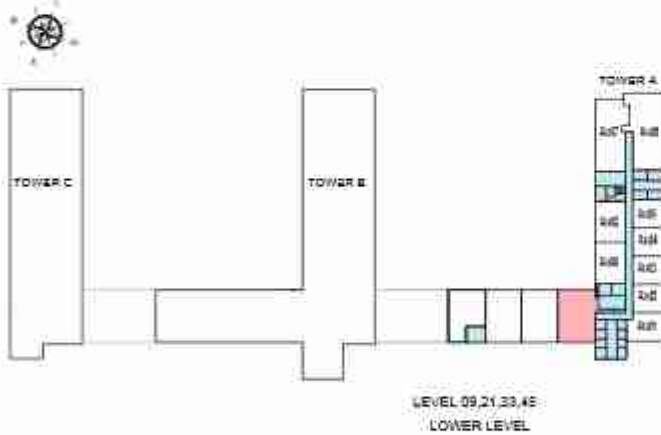
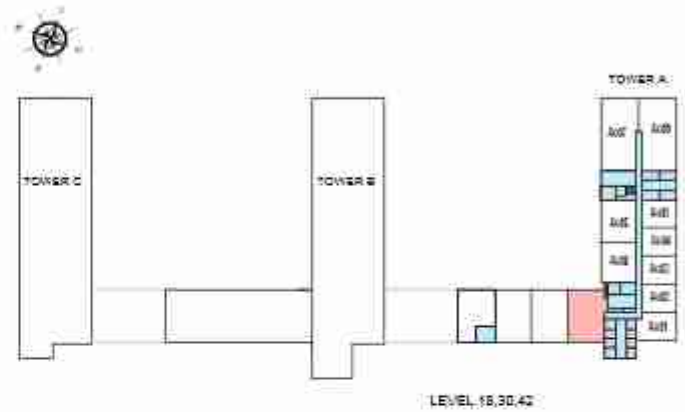
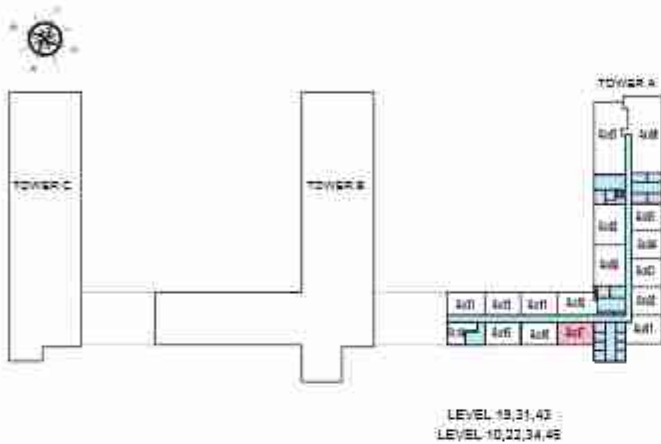
TOTAL SALEABLE AREA

SUITE = 2,227.74 SQ.FT.

BALCONY = 173.33 SQ.FT.

TOTAL = 2,401.07 SQ.FT.

 UNIT



List of unit numbers with this unit plan:

VIEWS

Ras Al Khor, Golf Course, Amenities

A1017, A1917, A2217

Ras Al Khor, Golf Course

A3117, A3417, A4317, A4617

Disclaimer: 1. All dimensions are in meters, measured to wall finishes. 2. All materials, dimensions & drawings are approximate. 3. Information is subject to change without notice, at developer's absolute discretion. 4. Actual areas may vary from the stated areas. 5. Drawing are not to scale. 6. All images used are for illustrative purpose only and do not represent the actual size, features, specifications, fittings and furnishings. 7. The developer reserves the right to make revisions/alterations, at its absolute discretion, without any liability whatsoever.

TOWER B

UNIT PLANS

1 BEDROOM APARTMENT

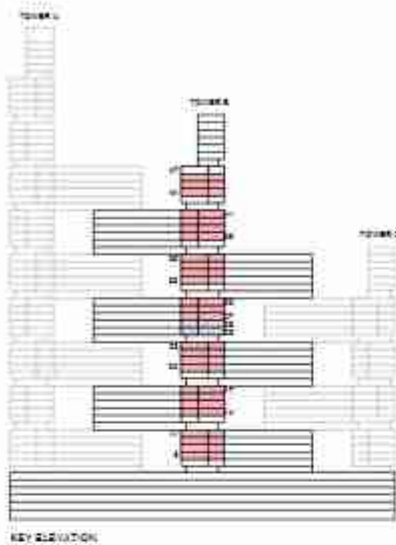
TYPE D (with balcony)

TOTAL SALEABLE AREA

SUITE = 490.21 SQ.FT.

BALCONY = 49.51 SQ.FT.

TOTAL = 539.72 SQ.FT.



List of unit numbers with this unit plan:

VIEWS

Ras Al Khor, Golf Course, Amenities

B906, B908, B1006, B1106, B1406, B1506, B1606, B1706, B2006, B2106, B2206, B2306

Ras Al Khor, Golf Course, Water Body

B2706, B2806, B2906, B3206, B3306, B3406, B3506

Ras Al Khor, Golf Course

B3906, B3908, B4006, B4106, B4406, B4506, B4606

Disclaimer: 1. All dimensions are in meters, measured to wall finishes. 2. All materials, dimensions & drawings are approximate. 3. Information is subject to change without notice, at developer's absolute discretion. 4. Actual areas may vary from the stated areas. 5. Drawing are not to scale. 6. All images used are for illustrative purpose only and do not represent the actual size, features, specifications, fittings and furnishings. 7. The developer reserves the right to make revisions/alterations, at its absolute discretion, without any liability whatsoever.

1 BEDROOM APARTMENT

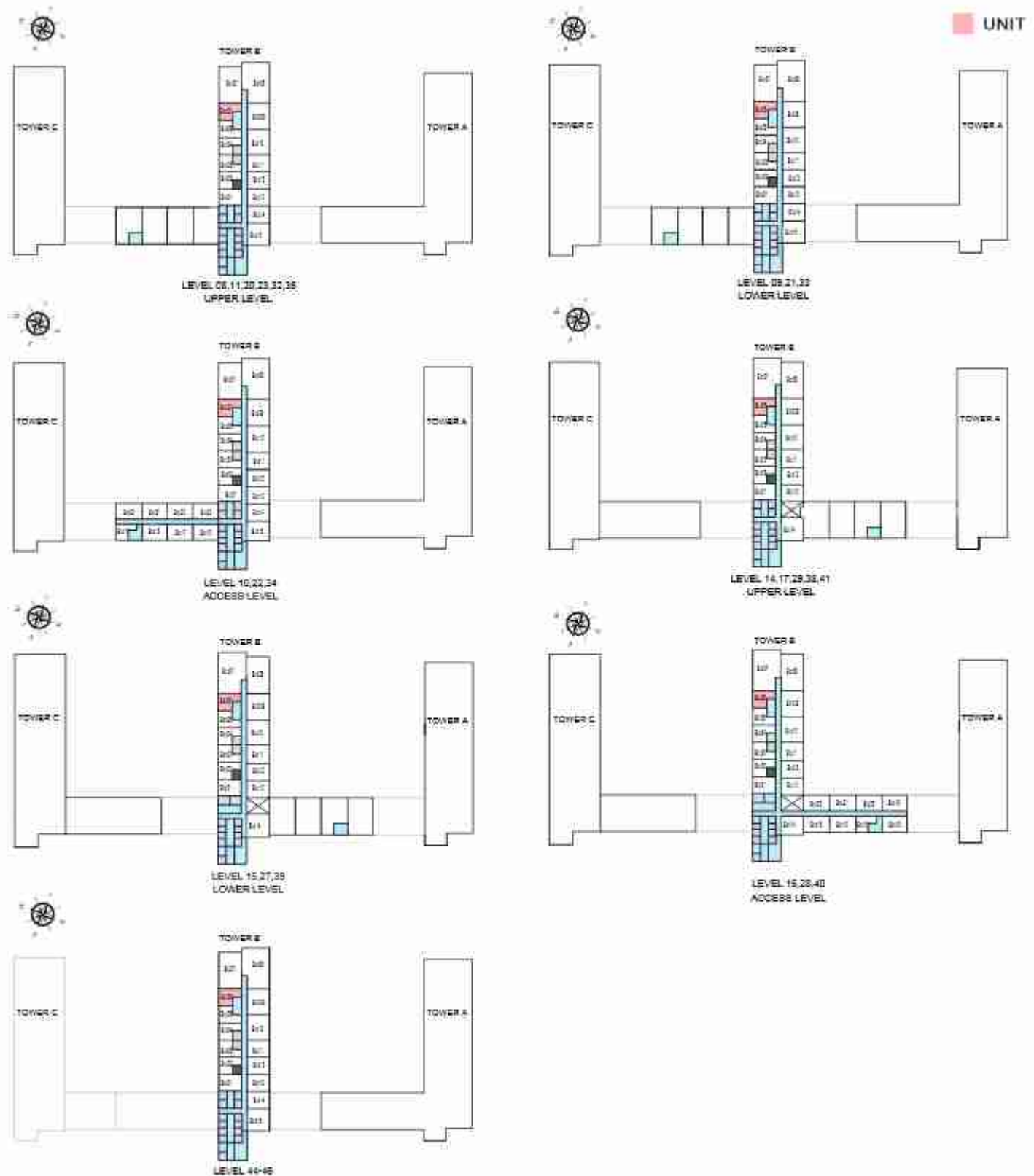
TYPE D (with balcony)

TOTAL SALEABLE AREA

SUITE = 490.21 SQ.FT.

BALCONY = 49.51 SQ.FT.

TOTAL = 539.72 SQ.FT.



List of unit numbers with this unit plan:

VIEWS

Ras Al Khor, Golf Course, Amenities

B906, B906, B1006, B1106, B1406, B1506, B1606, B1706, B2006, B2106, B2206, B2306

Ras Al Khor, Golf Course

B3906, B3906, B4006, B4106, B4406, B4506, B4606

Ras Al Khor, Golf Course, Water Body

B2706, B2806, B2906, B3206, B3306, B3406, B3506

Disclaimer: 1. All dimensions are in meters, measured to wall finishes. 2. All materials, dimensions & drawings are approximate. 3. Information is subject to change without notice, at developer's absolute discretion. 4. Actual areas may vary from the stated areas. 5. Drawing are not to scale. 6. All images used are for illustrative purpose only and do not represent the actual size, features, specifications, fittings and furnishings. 7. The developer reserves the right to make revisions/alterations, at its absolute discretion, without any liability whatsoever.

1 BEDROOM APARTMENT

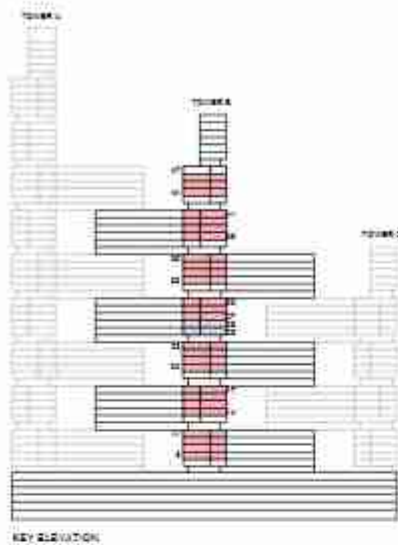
TYPE D (with balcony) VARIANT 1

TOTAL SALEABLE AREA

SUITE = 491.58 SQ.FT.

BALCONY = 46.05 SQ.FT.

TOTAL = 537.63 SQ.FT.



List of unit numbers with this unit plan:

VIEWS

Ras Al Khor, Golf Course, Amenities

B905, B905, B1005, B1105, B1405, B1505, B1605, B1705, B2005, B2105, B2205, B2305

Ras Al Khor, Golf Course

B3905, B3905, B4005, B4105, B4405, B4505, B4605

Ras Al Khor, Golf Course, Water Body

B2705, B2905, B2905, B3205, B3305, B3405, B3505

Disclaimer: 1. All dimensions are in meters, measured to wall finishes. 2. All materials, dimensions & drawings are approximate. 3. Information is subject to change without notice, at developer's absolute discretion. 4. Actual areas may vary from the stated areas. 5. Drawing are not to scale. 6. All images used are for illustrative purpose only and do not represent the actual size, features, specifications, fittings and furnishings. 7. The developer reserves the right to make revisions/alterations, at its absolute discretion, without any liability whatsoever.

1 BEDROOM APARTMENT

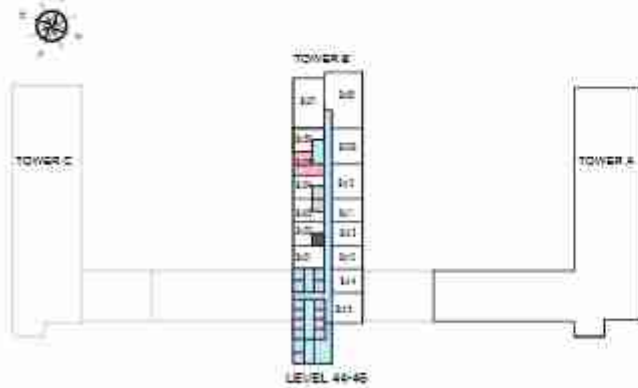
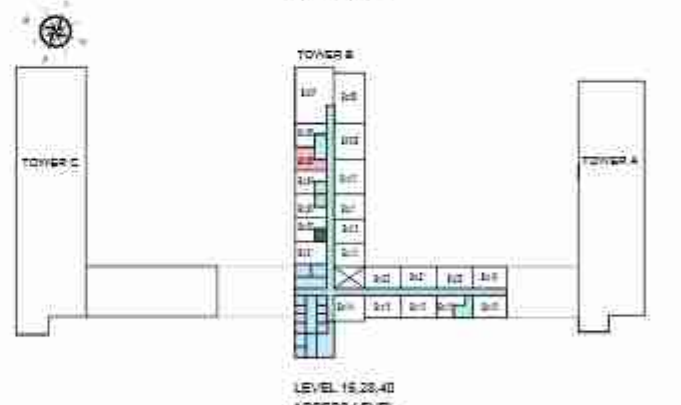
TYPE D (with balcony) VARIANT 1

TOTAL SALEABLE AREA

SUITE = 491.58 SQ.FT.

BALCONY = 46.05 SQ.FT.

TOTAL = 537.63 SQ.FT.



List of unit numbers with this unit plan:

VIEWS

Ras Al Khor, Golf Course, Amenities

B905, B905, B1005, B1105, B1405, B1505, B1605, B1705, B2005, B2105, B2205, B2305

Ras Al Khor, Golf Course, Water Body

B2705, B2905, B2905, B3205, B3305, B3405, B3505

Ras Al Khor, Golf Course

B3905, B3905, B4005, B4105, B4405, B4505, B4605

Disclaimer: 1. All dimensions are in meters, measured to wall finishes. 2. All materials, dimensions & drawings are approximate. 3. Information is subject to change without notice, at developer's absolute discretion. 4. Actual areas may vary from the stated areas. 5. Drawing are not to scale. 6. All images used are for illustrative purpose only and do not represent the actual size, features, specifications, fittings and furnishings. 7. The developer reserves the right to make revisions/alterations, at its absolute discretion, without any liability whatsoever.

1 BEDROOM APARTMENT

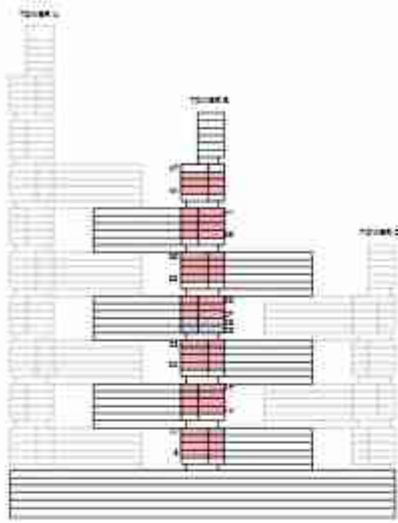
TYPE E (with balcony)

TOTAL SALEABLE AREA

SUITE = 503.94 SQ.FT.

BALCONY = 45.08 SQ.FT.

TOTAL = 549.02 SQ.FT.



List of unit numbers with this unit plan:

VIEWS

Ras Al Khor, Amenities
B903, B903, B1003

Ras Al Khor, Golf Course, Amenities
B1103, B1403, B1503, B1603, B1703, B2003, B2103, B2203, B2303

Ras Al Khor, Golf Course, Water Body
B2703, B2903, B2903, B3203, B3303, B3403, B3503,

Ras Al Khor, Golf Course
B3803, B3903, B4003, B4103, B4403, B 4503, B4603

Disclaimer: 1. All dimensions are in meters, measured to wall finishes. 2. All materials, dimensions & drawings are approximate. 3. Information is subject to change without notice, at developer's absolute discretion. 4. Actual areas may vary from the stated areas. 5. Drawing are not to scale. 6. All images used are for illustrative purpose only and do not represent the actual size, features, specifications, fittings and furnishings. 7. The developer reserves the right to make revisions/alterations, at its absolute discretion, without any liability whatsoever.

1 BEDROOM APARTMENT

TYPE E (with balcony)

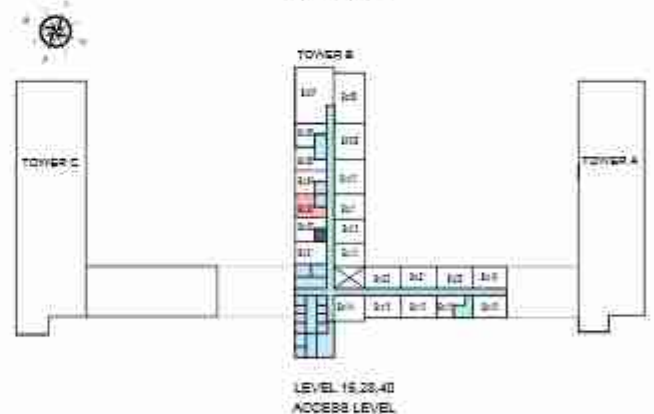
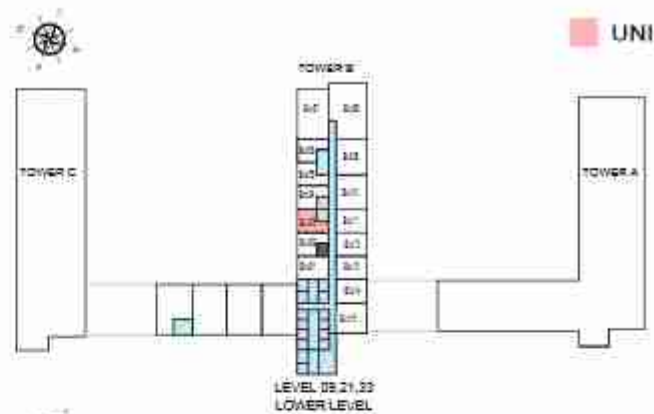
TOTAL SALEABLE AREA

SUITE = 503.94 SQ.FT.

BALCONY = 45.08 SQ.FT.

TOTAL = 549.02 SQ.FT.

UNIT



List of unit numbers with this unit plan:

VIEWS

Ras Al Khor, Amenities
B903, B902, B1003

Ras Al Khor, Golf Course, Water Body
B2703, B2903, B2903, B3703, B3303, B3403, B3503,

Ras Al Khor, Golf Course, Amenities
B1103, B1403, B1502, B1603, B1703, B2003, B2103, B2203, B2303

Ras Al Khor, Golf Course
B3803, B3903, B4003, B4103, B4403, B 4503, B4603

Disclaimer: 1. All dimensions are in meters, measured to wall finishes. 2. All materials, dimensions & drawings are approximate. 3. Information is subject to change without notice, at developer's absolute discretion. 4. Actual area may vary from the stated area. 5. Drawing are not to scale. 6. All images used are for illustrative purpose only and do not represent the actual size, features, specifications, fittings and furnishings. 7. The developer reserves the right to make revisions/alterations, at its absolute discretion, without any liability whatsoever.

1 BEDROOM APARTMENT

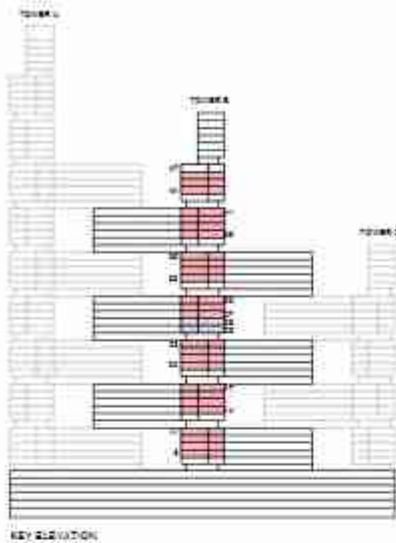
TYPE E (with balcony) VARIANT 1

TOTAL SALEABLE AREA

SUITE = 503.94 SQ.FT.

BALCONY = 45.08 SQ.FT.

TOTAL = 549.02 SQ.FT.



List of unit numbers with this unit plan:

VIEWS

Ras Al Khor, Amenities

B802, B902, B1002

Ras Al Khor, Golf Course, Amenities

B1102, B1402, B1502, B1602, B1702, B2002, B2102, B2202, B2302

Ras Al Khor, Golf Course

B2702, B2902, B2902, B3202, B3302, B3402, B3502, B3802, B3902, B4002, B4102, B4402, B4502, B4602

Disclaimer: 1. All dimensions are in meters, measured to wall finishes. 2. All materials, dimensions & drawings are approximate. 3. Information is subject to change without notice, at developer's absolute discretion. 4. Actual areas may vary from the stated areas. 5. Drawing are not to scale. 6. All images used are for illustrative purpose only and do not represent the actual size, features, specifications, fittings and furnishings. 7. The developer reserves the right to make revisions/alterations, at its absolute discretion, without any liability whatsoever.

1 BEDROOM APARTMENT

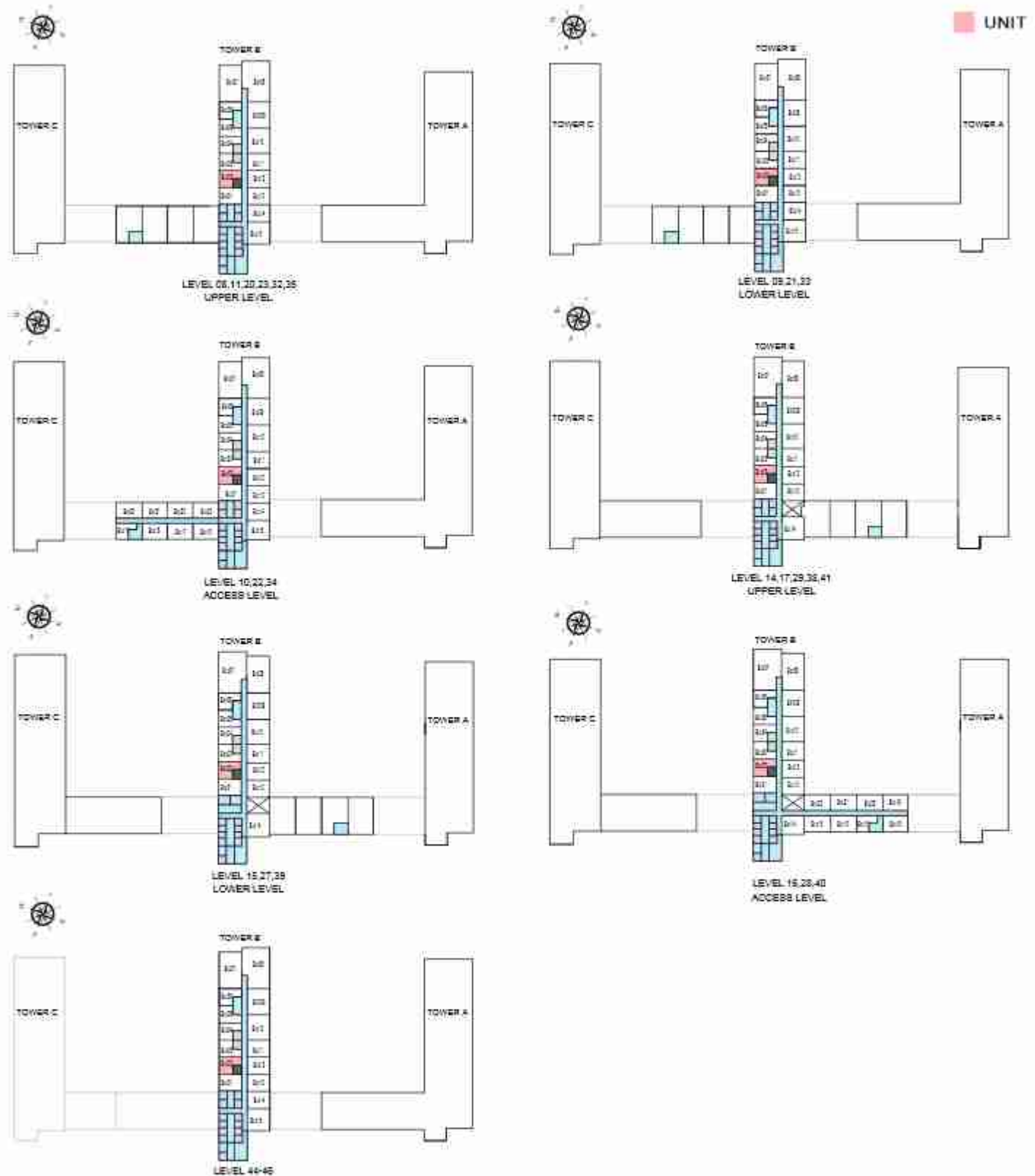
TYPE E (with balcony) VARIANT 1

TOTAL SALEABLE AREA

SUITE = 503.94 SQ.FT.

BALCONY = 45.08 SQ.FT.

TOTAL = 549.02 SQ.FT.



List of unit numbers with this unit plan:

VIEWS

Ras Al Khor, Amenities

B802, B902, B1002

Ras Al Khor, Golf Course

B2702, B2902, B2902, B3202, B3302, B3402, B3502, B3802, B3902, B4002, B4102, B4402, B4502, B4602

Ras Al Khor, Golf Course, Amenities

B1102, B1402, B1502, B1602, B1702, B2002, B2102, B2202, B2302

Disclaimer: 1. All dimensions are in meters, measured to wall finishes. 2. All materials, dimensions & drawings are approximate. 3. Information is subject to change without notice, at developer's absolute discretion. 4. Actual area may vary from the stated area. 5. Drawing are not to scale. 6. All images used are for illustrative purpose only and do not represent the actual size, features, specifications, fittings and furnishings. 7. The developer reserves the right to make revisions/alterations, at its absolute discretion, without any liability whatsoever.

1 BEDROOM APARTMENT

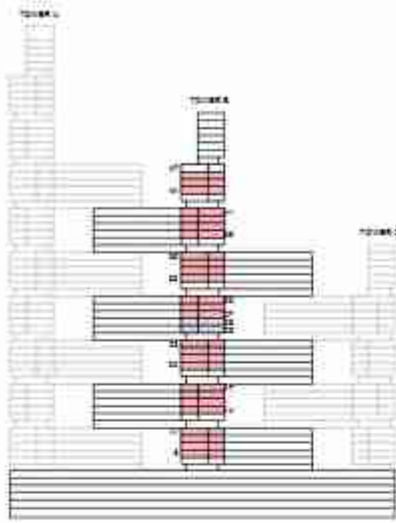
TYPE F (with balcony)

TOTAL SALEABLE AREA

SUITE = 508.06 SQ.FT.

BALCONY = 45.35 SQ.FT.

TOTAL = 553.41 SQ.FT.



List of unit numbers with this unit plan:

VIEWS

Ras Al Khor, Amenities
B904, B904, B1004

Ras Al Khor, Golf Course, Amenities
B1104, B1404, B1504, B1604, B1704, B2004, B2104, B2204, B2304

Ras Al Khor, Golf Course, Water Body
B2704, B2804, B2904, B3204, B3304, B3404, B3504

Ras Al Khor, Golf Course
B3804, B3904, B4004, B4104, B4404, B4504, B4604

Disclaimer: 1. All dimensions are in meters, measured to wall finishes. 2. All materials, dimensions & drawings are approximate. 3. Information is subject to change without notice, at developer's absolute discretion. 4. Actual areas may vary from the stated areas. 5. Drawing are not to scale. 6. All images used are for illustrative purpose only and do not represent the actual size, features, specifications, fittings and furnishings. 7. The developer reserves the right to make revisions/alterations, at its absolute discretion, without any liability whatsoever.

1 BEDROOM APARTMENT

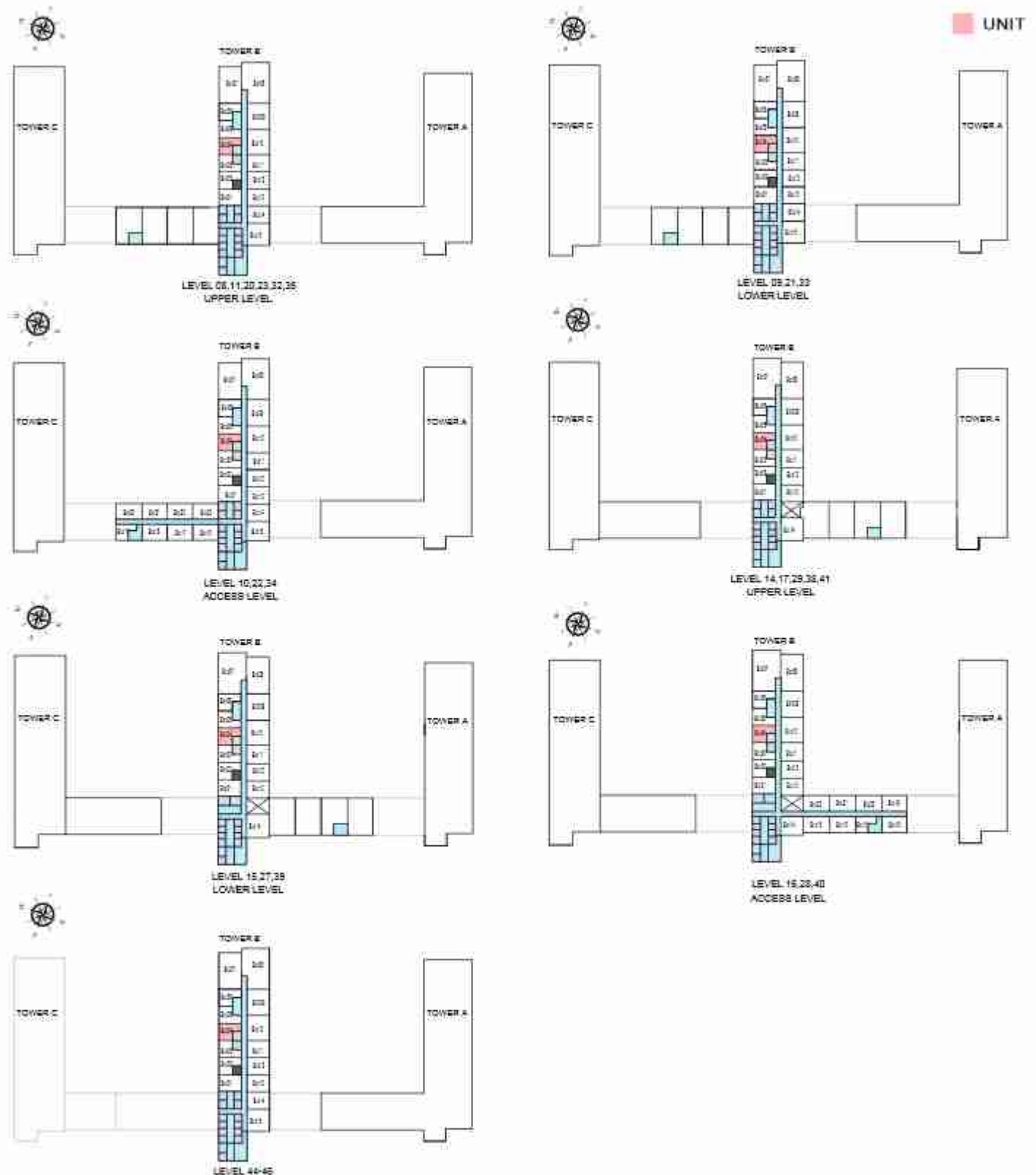
TYPE F (with balcony)

TOTAL SALEABLE AREA

SUITE = 508.06 SQ.FT.

BALCONY = 45.35 SQ.FT.

TOTAL = 553.41 SQ.FT.



List of unit numbers with this unit plan:

VIEWS

Ras Al Khor, Amenities
B904, B904, B1004

Ras Al Khor, Golf Course, Amenities
B1104, B1404, B1504, B1604, B1704, B2004, B2104, B2204, B2304

Ras Al Khor, Golf Course, Water Body
B2704, B2804, B2904, B3204, B3304, B3404, B3504

Ras Al Khor, Golf Course
B3804, B3904, B4004, B4104, B4404, B4504, B4604

Disclaimer: 1. All dimensions are in meters, measured to wall finishes. 2. All materials, dimensions & drawings are approximate. 3. Information is subject to change without notice, at developer's absolute discretion. 4. Actual area may vary from the stated area. 5. Drawing are not to scale. 6. All images used are for illustrative purpose only and do not represent the actual size, features, specifications, fittings and furnishings. 7. The developer reserves the right to make revisions/alterations, at its absolute discretion, without any liability whatsoever.

1.5 BEDROOM APARTMENT

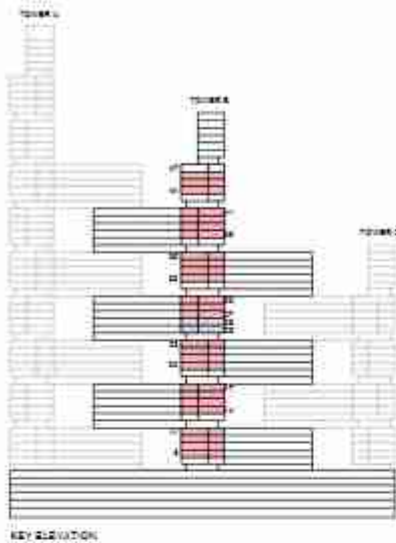
TYPE A (with study room + balcony)

TOTAL SALEABLE AREA

SUITE = 630.99 SQ.FT.

BALCONY = 45.99 SQ.FT.

TOTAL = 676.98 SQ.FT.



List of unit numbers with this unit plan:

VIEWS

Amorities, Crook

B812, B912, B1012

Golf Course, Amorities, Crook

B1112, B1412, B1512, B1612, B1712, B2012, B2112, B2212, B2312

Golf Course, Crook

B2712, B2812, B2912, B3212, B3312, B3412, B3512, B3812, B3912, B4012, B4112, B4412, B4512, B4612

Disclaimer: 1. All dimensions are in meters, measured to wall finishes. 2. All materials, dimensions & drawings are approximate. 3. Information is subject to change without notice, at developer's absolute discretion. 4. Actual areas may vary from the stated areas. 5. Drawing are not to scale. 6. All images used are for illustrative purpose only and do not represent the actual size, features, specifications, fittings and furnishings. 7. The developer reserves the right to make revisions/alterations, at its absolute discretion, without any liability whatsoever.

1.5 BEDROOM APARTMENT

TYPE A (with study room + balcony)

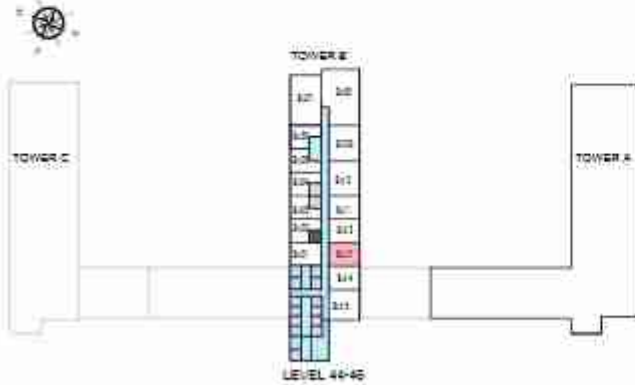
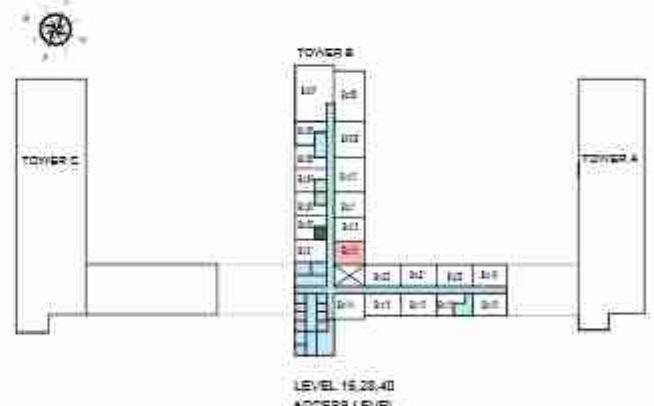
TOTAL SALEABLE AREA

SUITE = 630.99 SQ.FT.

BALCONY = 45.99 SQ.FT.

TOTAL = 676.98 SQ.FT.

UNIT



List of unit numbers with this unit plan:

VIEWS

Amerities, Creek

B812, B912, B1012

Golf Course, Amerities, Creek

B1112, B1412, B1512, B1612, B1712, B2012, B2112, B2212, B2312

Golf Course, Creek

B2712, B2812, B2912, B3212, B3312, B3412, B3512, B3812, B3912, B4012, B4112, B4412, B4512, B4612

Disclaimer: 1. All dimensions are in meters, measured to wall finishes. 2. All materials, dimensions & drawings are approximate. 3. Information is subject to change without notice, at developer's absolute discretion. 4. Actual areas may vary from the stated areas. 5. Drawing are not to scale. 6. All images used are for illustrative purpose only and do not represent the actual size, features, specifications, fittings and furnishings. 7. The developer reserves the right to make revisions/alterations, at its absolute discretion, without any liability whatsoever.

1.5 BEDROOM APARTMENT

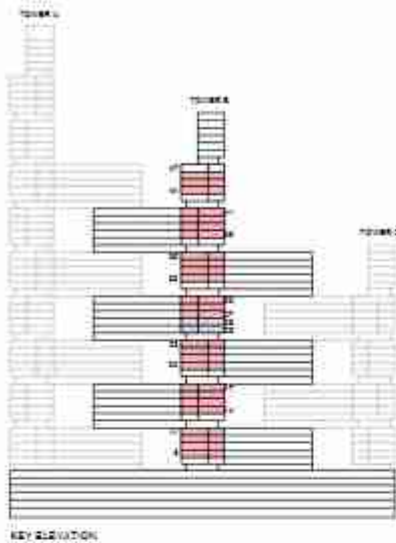
TYPE A (with study room + balcony) VARIANT 1

TOTAL SALEABLE AREA

SUITE = 630.99 SQ.FT.

BALCONY = 45.99 SQ.FT.

TOTAL = 676.98 SQ.FT.



List of unit numbers with this unit plan:

VIEWS

Amorities, Crook

B812, B912, D1012

Golf Course, Amorities, Crook

D1112, D1412, D1512, D1612, D1712, D2012, D2112, D2212, D2312

Golf Course, Crook

D2712, D2812, D2912, B3212, B3312, B3412, B3512, B3812, B3912, B4012, B4112, B4412, B4512, B4612

Disclaimer: 1. All dimensions are in meters, measured to wall finishes. 2. All materials, dimensions & drawings are approximate. 3. Information is subject to change without notice, at developer's absolute discretion. 4. Actual areas may vary from the stated areas. 5. Drawing are not to scale. 6. All images used are for illustrative purpose only and do not represent the actual size, features, specifications, fittings and furnishings. 7. The developer reserves the right to make revisions/alterations, at its absolute discretion, without any liability whatsoever.

1.5 BEDROOM APARTMENT

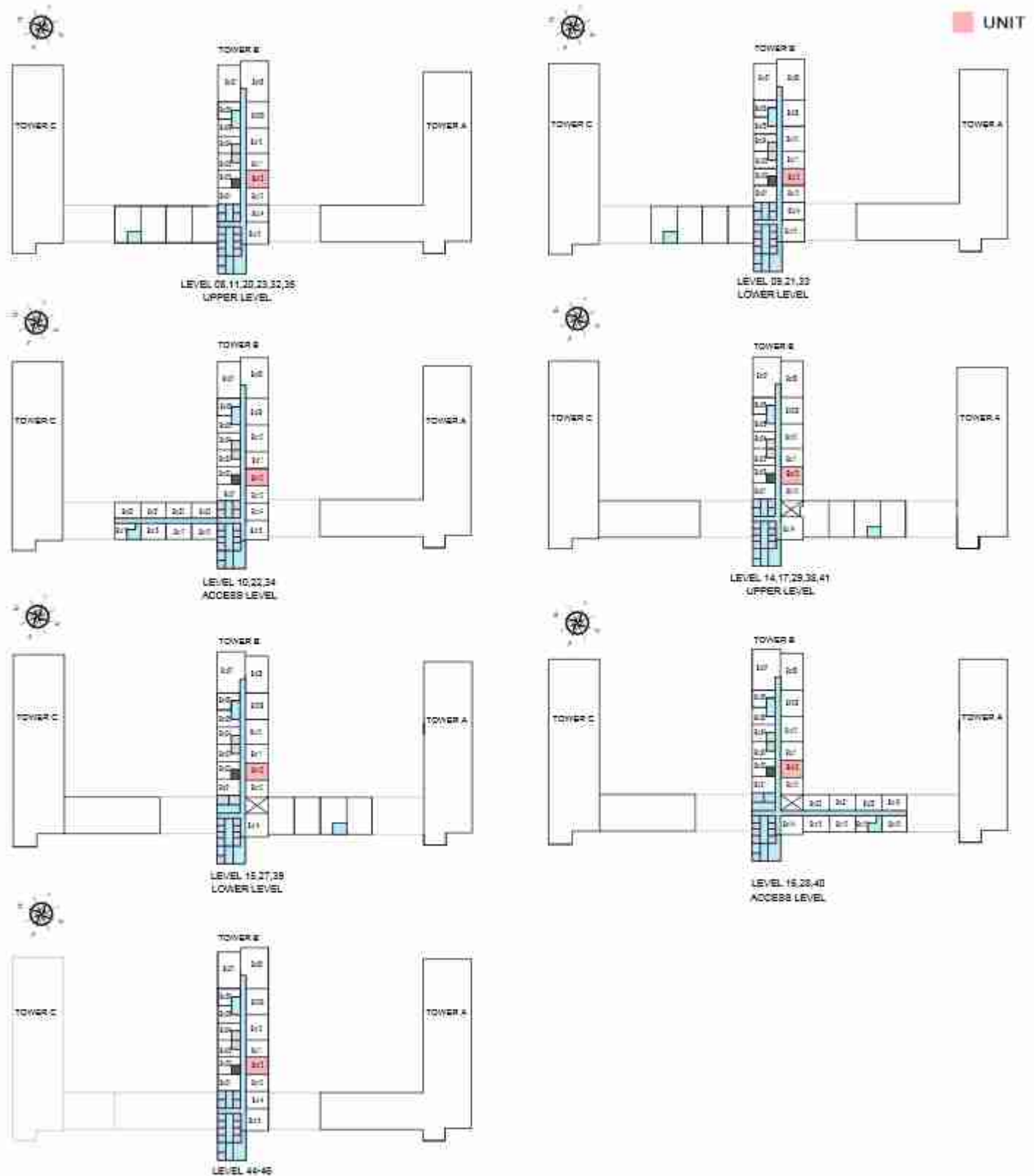
TYPE A (with study room + balcony) VARIANT 1

TOTAL SALEABLE AREA

SUITE = 630.99 SQ.FT.

BALCONY = 45.99 SQ.FT.

TOTAL = 676.98 SQ.FT.



List of unit numbers with this unit plan:

VIEWS

Amorities, Creek

B812, B912, D1012

Golf Course, Amorities, Creek

D1112, D1412, D1512, D1612, D1712, D2012, D2112, D2212, D2312

Golf Course, Creek

D2712, D2812, D2912, D3212, D3312, D3412, D3512, D3812, D3912, D4012, D4112, D4412, D4512, D4612

Disclaimer: 1. All dimensions are in meters, measured to wall finishes. 2. All materials, dimensions & drawings are approximate. 3. Information is subject to change without notice, at developer's absolute discretion. 4. Actual areas may vary from the stated areas. 5. Drawing are not to scale. 6. All images used are for illustrative purpose only and do not represent the actual size, features, specifications, fittings and furnishings. 7. The developer reserves the right to make revisions/alterations, at its absolute discretion, without any liability whatsoever.

1.5 BEDROOM APARTMENT

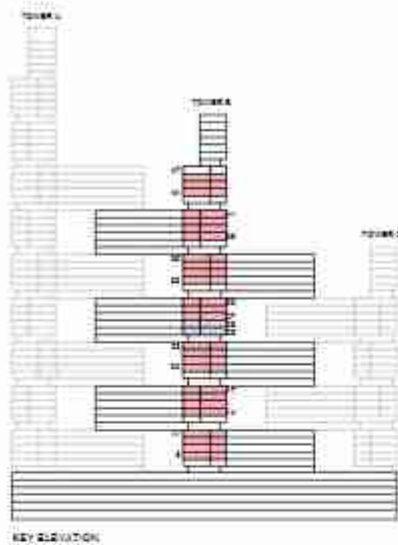
TYPE A (with study room + balcony) VARIANT 2

TOTAL SALEABLE AREA

SUITE = 635.38 SQ.FT.

BALCONY = 45.90 SQ.FT.

TOTAL = 681.28 SQ.FT.



List of unit numbers with this unit plan:

VIEWS

Ras Al Khor, Amenities
B801, B901, B1001

Ras Al Khor, Golf Course, Amenities
B1101, B1401, B1501, B1601, B1701, B2001, B2101, B2201, B2301

Ras Al Khor, Golf Course
B2701, B2901, B2901, B3201, B3301, B3401, B3501, B3801, B3901, B4001, B4101, B4401, B4501, B4601

Disclaimer: 1. All dimensions are in meters, measured to wall finishes. 2. All materials, dimensions & drawings are approximate. 3. Information is subject to change without notice, at developer's absolute discretion. 4. Actual areas may vary from the stated areas. 5. Drawing are not to scale. 6. All images used are for illustrative purpose only and do not represent the actual size, features, specifications, fittings and furnishings. 7. The developer reserves the right to make revisions/alterations, at its absolute discretion, without any liability whatsoever.

1.5 BEDROOM APARTMENT

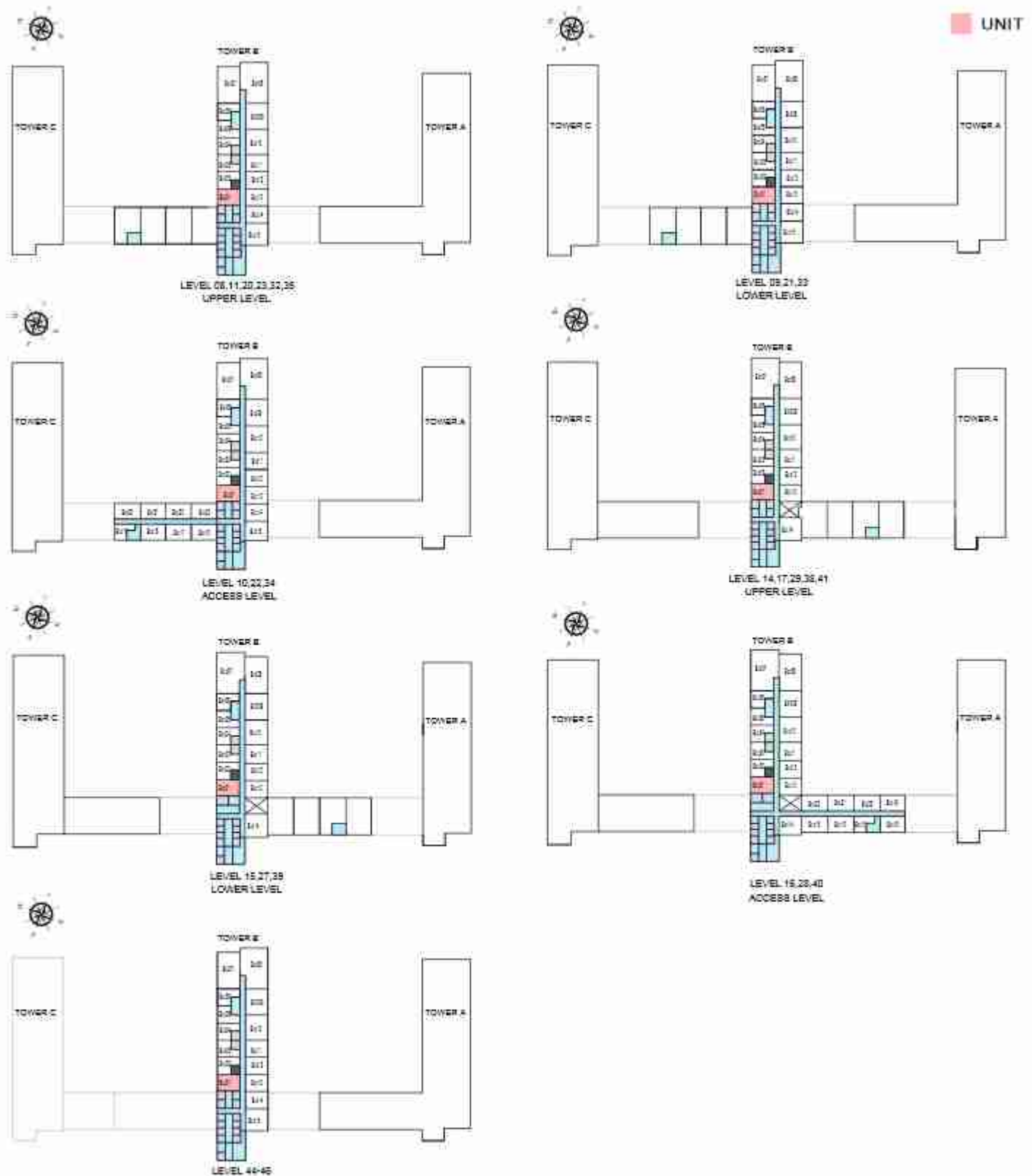
TYPE A (with study room + balcony) VARIANT 2

TOTAL SALEABLE AREA

SUITE = 635.38 SQ.FT.

BALCONY = 45.90 SQ.FT.

TOTAL = 681.28 SQ.FT.



List of unit numbers with this unit plan:

VIEWS

Ras Al Khor, Amenities
B801, B901, B1001

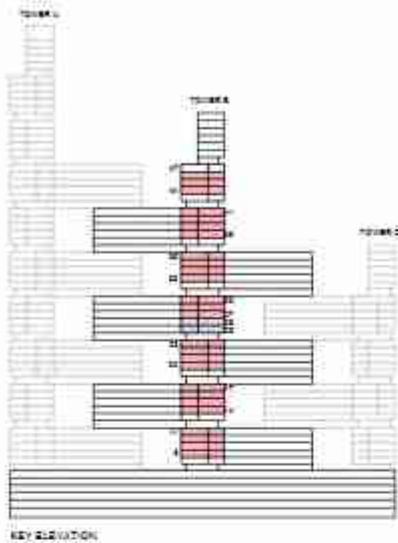
Ras Al Khor, Golf Course
B2701, B2901, B2901, B3201, B3301, B3401, B3501, B3801, B3901, B4001, B4101, B4401, B4501, B4601

Ras Al Khor, Golf Course, Amenities
B1101, B1401, B1501, B1601, B1701, B2001, B2101, B2201, B2301

Disclaimer: 1. All dimensions are in meters, measured to wall finishes. 2. All materials, dimensions & drawings are approximate. 3. Information is subject to change without notice, at developer's absolute discretion. 4. Actual areas may vary from the stated areas. 5. Drawing are not to scale. 6. All images used are for illustrative purpose only and do not represent the actual size, features, specifications, fittings and furnishings. 7. The developer reserves the right to make revisions/alterations, at its absolute discretion, without any liability whatsoever.

2 BEDROOM APARTMENT
TYPE D (with powder room + balcony)

TOTAL SALEABLE AREA
 SUITE = 968.11 SQ.FT.
 BALCONY = 48.13 SQ.FT.
 TOTAL = 1,016.24 SQ.FT.



List of unit numbers with this unit plan:

VIEWS

Golf Course, Amenities, Creek
 B809, B909, B1009

Amenities, Creek
 B810, B910, B1010

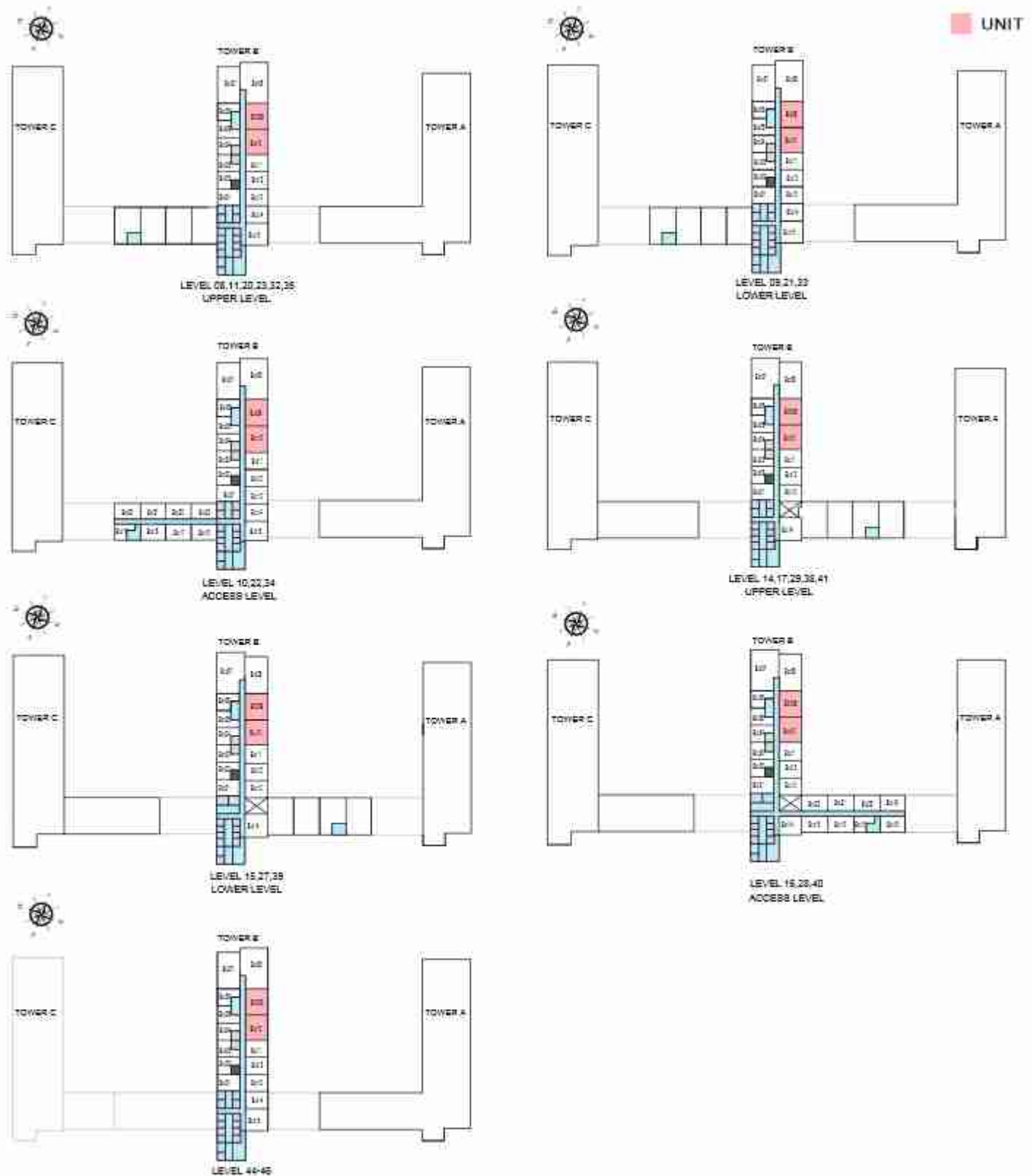
Golf Course, Amenities, Creek
 B1109, B1110, B1409, B1410, B1509, B1510, B1609, B1610, B1709, B1710, B2009, B2010, B2109, B2110, B2209, B2210, B2309, B2310

Golf Course, Creek
 B2709, B2710, B2809, B2810, B2909, B2910, B3209, B3210, B3309, B3310, B3409, B3410, B3509, B3510, B3809, B3810, B3909, B3910, B4009, B4010, B4109, B4110, B4409, B4410, B4509, B4510, B4609, B4610

Disclaimer: 1. All dimensions are in metric, measured to wall finishes. 2. All materials, dimensions & drawings are approximate. 3. Information is subject to change without notice, at developer's absolute discretion. 4. Actual areas may vary from the stated areas. 5. Drawing are not to scale. 6. All images used are for illustrative purpose only and do not represent the actual size, features, specifications, fittings and furnishings. 7. The developer reserves the right to make revisions/alterations, at its absolute discretion, without any liability whatsoever.

2 BEDROOM APARTMENT
TYPE D (with powder room + balcony)

TOTAL SALEABLE AREA
 SUITE = 968.11 SQ.FT.
 BALCONY = 48.13 SQ.FT.
 TOTAL = 1,016.24 SQ.FT.



List of unit numbers with this unit plan:

VIEWS

Golf Course, Amenities, Creek
 B809, B909, B1009

Amenities, Creek
 B810, B910, B1010

Golf Course, Amenities, Creek
 B1109, B1110, B1409, B1410, B1509, B1510, B1609, B1610, B1709, B1710, B2009, B2010, B2109, B2110, B2209, B2210, B2309, B2310

Golf Course, Creek
 B2709, B2710, B2809, B2810, B2909, B2910, B3209, B3210, B3309, B3310, B3409, B3410, B3509, B3510, B3809, B3810, B3909, B3910, B4009, B4010, B4109, B4110, B4409, B4410, B4509, B4510, B4609, B4610

Disclaimer: 1. All dimensions are in meters, measured to wall finishes. 2. All materials, dimensions & drawings are approximate. 3. Information is subject to change without notice, at developer's absolute discretion. 4. Actual area may vary from the stated area. 5. Drawing are not to scale. 6. All images used are for illustrative purpose only and do not represent the actual size, features, specifications, fittings and furnishings. 7. The developer reserves the right to make revisions/alterations, at its absolute discretion, without any liability whatsoever.



SOBHA ONE

SOBHA
REALTY