

RIVIERA

RÊVE



REVEL IN REFINEMENT



YOUR DREAMS,



IMAGINED.

JUST A STONE'S THROW FROM DUBAI'S BEATING HEART, A SECLUDED OASIS AWAITS. A LUXURIOUS RESIDENTIAL COMMUNITY WHERE LIFE FEELS EXPANSIVE, LIMITLESS, INFINITE. IT'S IDYLIC WATERFRONT LIVING AT ITS BEST. NOW YOURS TO CALL HOME.

Welcome to Azizi Riviera - one of Dubai's most luxurious destinations. Where you can wake up to breathtaking crystal lagoon views, spend your days wandering along the French Riviera-inspired boulevard and mingle with like-minded residents - those that appreciate the finer things in life. Featuring three residential towers, a 5-star hotel and an executive business centre, this destination truly offers it all.

REVEL ALONG THE RIVIERA



Bringing you the best of beachside living, leisure and entertainment, Riviera Réve complements your already distinguished lifestyle. Architecturally inspired by the movement of water across the lagoon, the three towers have been built with solar panels and vertical greenery for greater sustainability and air purity. A development as unique and rare as you.

DESIGNED TO ENRICH LIVES



Enjoy absolute masterfully crafted apartments with incredible lagoon views, unparalleled amenities and year-round entertainment - all within proximity to Dubai's most iconic landmarks. A casual stroll along the boulevard, a splash in the crystal lagoon, a midday espresso or a fine-dining feast along the waterfront. It's the life you've always dreamed of.

A ONE-OF-A-KIND DESTINATION



AN ARRIVAL LIKE NO OTHER

Surround yourself with timeless style, service and sophistication at Riviera Réve. With separate entrances for each tower, you can enjoy a designated drop-off area as well as direct access to a walkway connecting you to the retail outlets and crystal lagoon. The space also features a 7ft wall cascading from the rooftop infinity pool.

Step into the main lobby and experience a first impression like no other. With floor-to-ceiling glass windows, Italian marbled flooring and an incredible chandelier towering from the ceiling - modern-day elegance has never been so memorable.

AN ELEVATED ENTRANCE



A neutral, earthy colour palette evokes a sense of down-to-earth sophistication and ease – purposefully designed to connect you to nature, every day. With palm trees, local flora and fresh flowers welcoming you home, the lobby is a breath of fresh air.

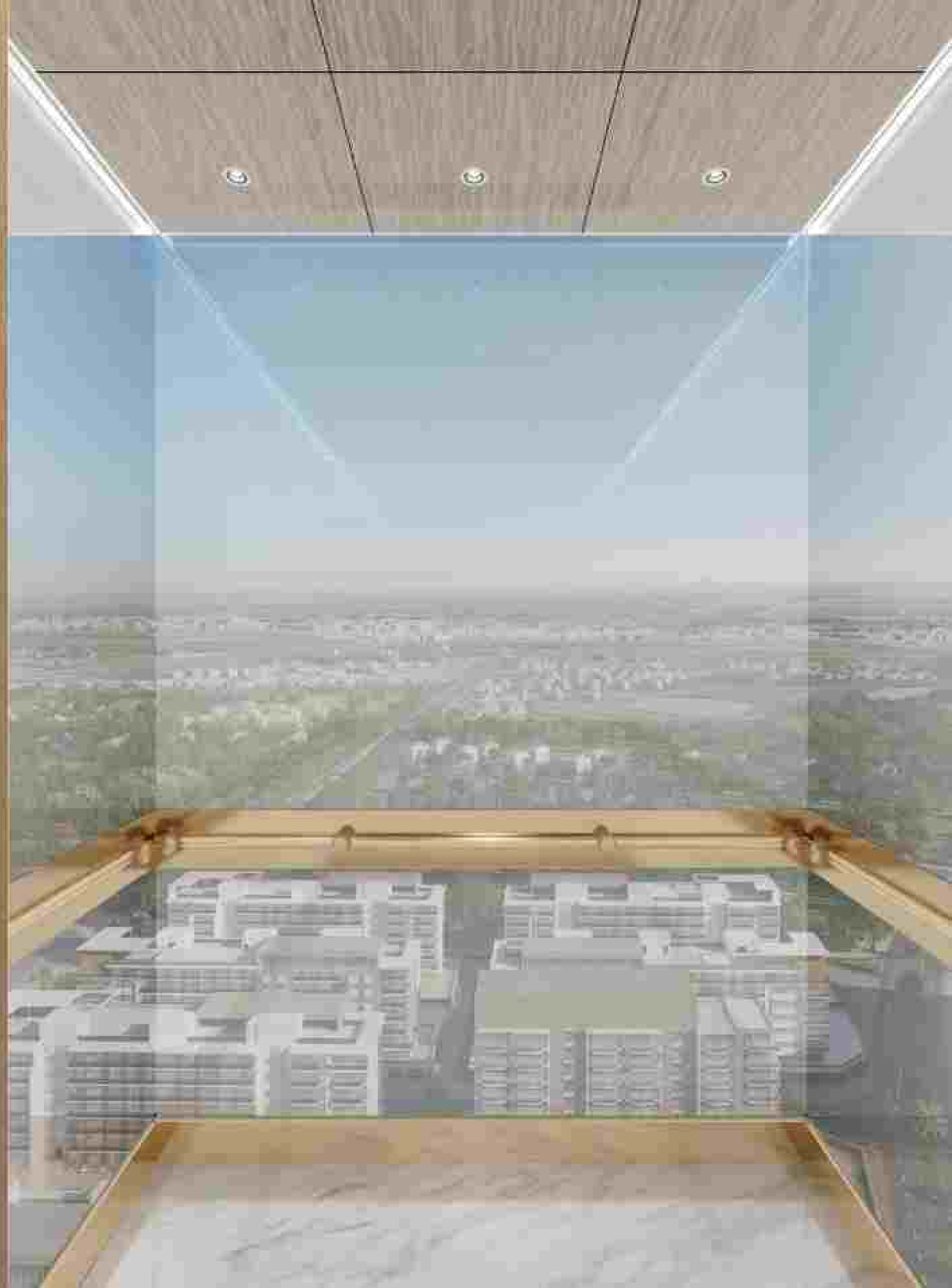
A SANCTUARY OF SECLUSION

AZIZI



REACH NEW HEIGHTS

Soar straight to your apartment in our luxurious all-glass elevator. Upon ascent, gaze at the incredible views overlooking the community and stunning green nature - all from the most panoramic perspective.



A wide-angle photograph of a luxury resort pool deck at sunset. In the foreground, two lounge chairs with white cushions are positioned on a wooden deck. A small round table between them holds a drink, a white vase with a fern, and a book. In the middle ground, a man and a woman are in the water of a half-Olympic-sized infinity pool, holding drinks. The pool's edge is perfectly aligned with the horizon, creating a seamless transition to the crystal blue lagoon beyond. In the background, the Dubai skyline is silhouetted against a warm, orange and pink sunset sky, with the Burj Khalifa standing prominently. Two tall palm trees frame the scene on either side.

IMMERSE
INTO INFINITY

Take a refreshing dip in the half-Olympic-sized infinity pool overlooking breathtaking views across the crystal blue lagoon, or soak up the sun on the wooden pool deck. With iconic sunsets, laid-back tunes and cosy cabanas to nestle into, this is the perfect place to lay back and enjoy the sunshine.

Spend your days wandering along the French-Rivers-Inspired boulevard as you shop, dine and mingle with other residents. From luxury fashion boutiques to homewares stores, fine dining restaurants to quaint cafes and year-round entertainment for the whole family, you might just never want to leave.

THE WORLD AT YOUR DOORSTEP

Created with contemporary lifestyles in mind, Riviera R&V offers intuitiveness and sophistication in every way. With premium wood joinery and finishings, bespoke integrated lighting and Italian marble flooring, every detail of your home has been curated to perfection.

STEP INTO UNRIVALLED LUXURY





ENTER IN ELEGANCE

Experience that hotel-like feeling every time you walk to your door. With calacatta marble flooring, 2.5 metre veneered doors, statement wall sconces and security via an innovative smart system - coming home is never felt so rewarding.

Created for those with elevated lifestyles, each apartment
enjoys airy, open floor plans with floor-to-ceiling balcony
windows. With the ability to fully open up, the living space is
extended flooding in natural light and sweeping views
across Downtown Dubai. With an effortless feeling of space
and a functional design, River Residence is a modern-day classic
in the making.

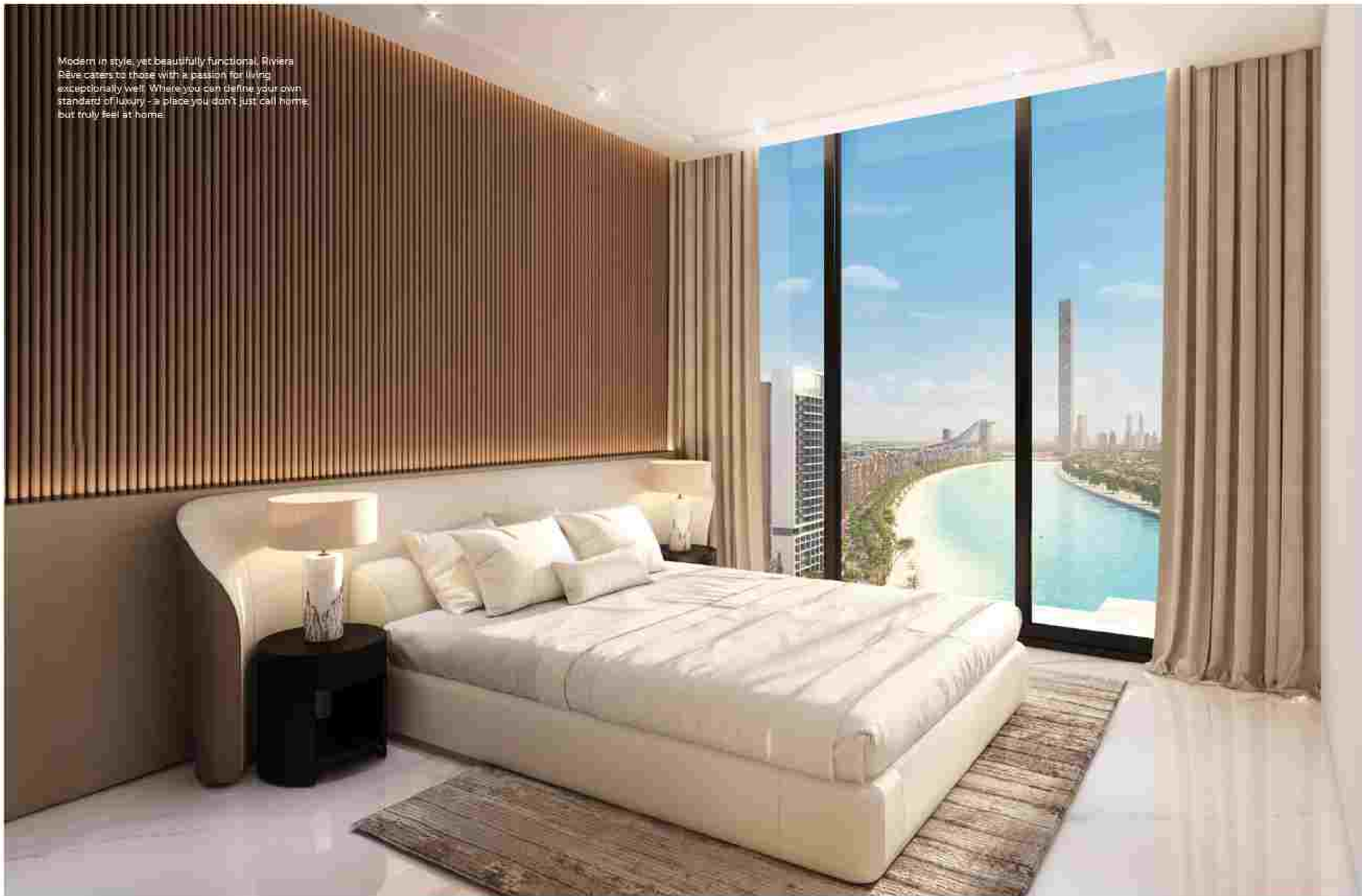
STEP INTO YOUR DOMAIN



Elegance and finesse are integral to the style of your living quarters. From the quartz stone countertops, integrated pendant lighting, natural wood elements to the built-in pantry - everything has been presented with flawless execution.



Modern in style, yet beautifully functional, Riviera Rave caters to those with a passion for living exceptionally well. Where you can define your own standard of luxury - a place you don't just call home, but truly feel at home.



With the unexpected luxury of space, relax in the elegance of your master bedroom. Designed using an open, expansive plan surrounded by floor-to-ceiling glass, each master bedroom allows the morning light to flood in while offering panoramic views of the magnificent crystal lagoon.

SPACIOUS SPLENDOUR

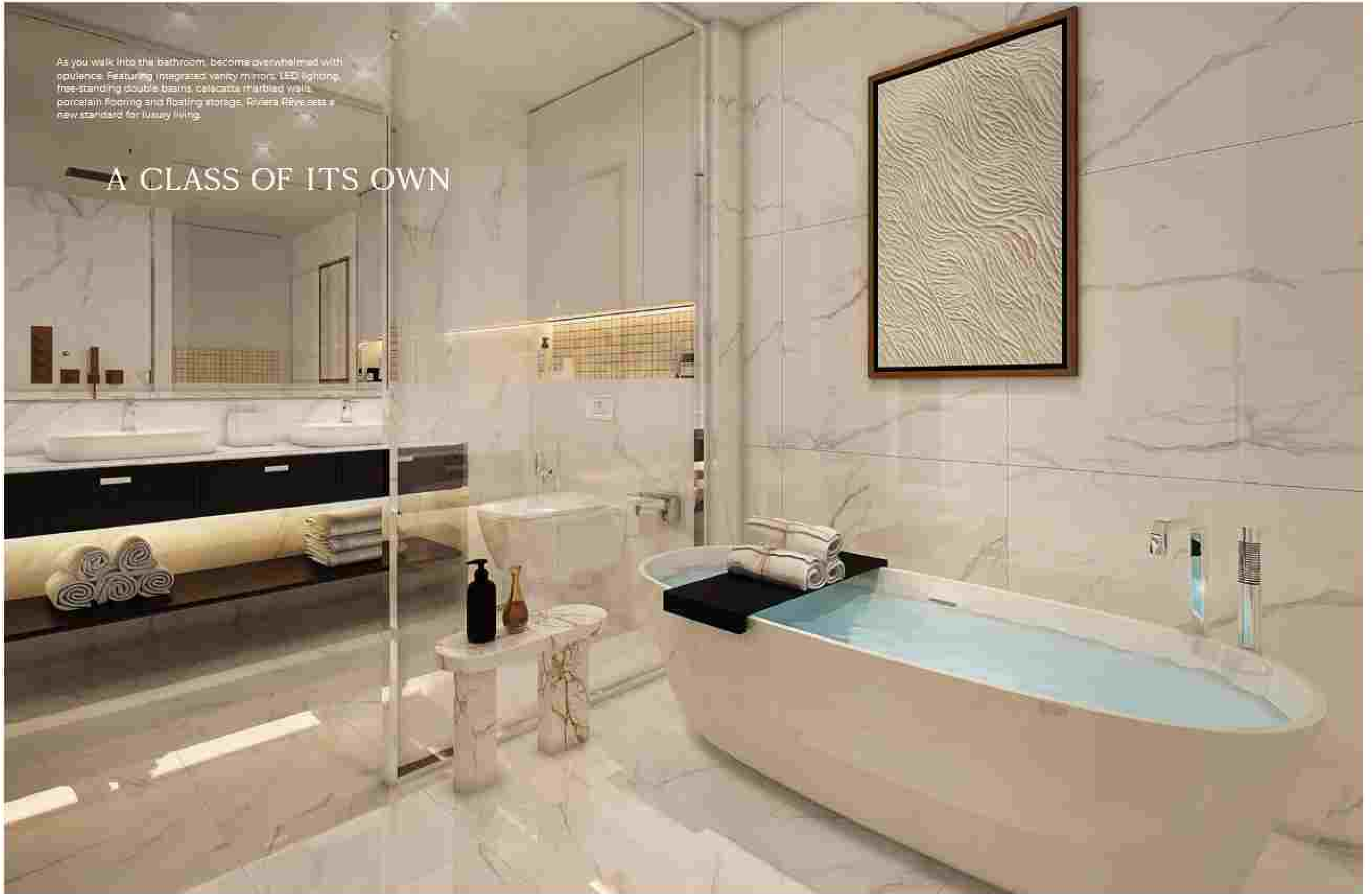


With bespoke walk-in-closets, velvet smooth headboards, chandelier lighting fixtures and premium gold finishes, everything has been carefully designed to accentuate your lifestyle - naturally benchmarked against the most sought-after residences.



As you walk into this bathroom, you become overwhelmed with opulence. Featuring integrated vanity mirror, LED lighting, free-standing double basins, delicate marbled walls, porcelain flooring and floating storage, Riviera Réve sets a new standard for luxury living.

A CLASS OF ITS OWN



Back in the glory of your very own private terrace overlooking magical Views. Offering maximum seclusion in a tranquil setting, our lagoon-facing residences provide endless views across Dubai's iconic skyline. Dine, entertain or simply relax on your exclusive balcony and live the 'high-life' every day.

VIEWS, PRIVY TO FEW





AWE-INSPIRING AMENITIES

Whether you want to take a dip in the grand infinity pool, dine outdoors along the boulevard, shop the incredible retail outlets and boutiques or let the kids unleash their adventurous side in the indoor and outdoor playground, you'll live exceptionally well at Riverside. You will also enjoy personalized perks such as a 5-star laundry service and customized carwash cleaning.



Reserved exclusively for residents, the premium lounge is a contemporary space featuring dedicated meeting areas, high-speed internet and state-of-the-art business facilities - the perfect place to mix business with pleasure.

RECLINE IN THE PREMIUM LOUNGE



Experience a state-of-the-art gym and fitness studio with full glass windows overlooking Dubai's magnificent skyline, the infinity pool and the waterfall feature. This private, residents-only space offers a mix of innovative cardio machinery, spin bikes, treadmills and a restorative yoga room to help you stay on top of your well-being, both physically and mentally.

WORKOUT WITH A VIEW





Devoted to the littlest of residents, our 100sqm indoor play area are bursting with toys, activity tables, a library and the wonderful sound of children giggling. This space is where kids can get their creative juices flowing all day, every day.

LET IMAGINATIONS RUN WILD



Welcome to your quiet corner of the world - where you can let your thoughts float away with the breeze. A private poolside cabana or a lounge to soak up the rays - we'll help you find calm amongst life's chaos.

FIND YOUR INNER ZEN



Feast with friends, family and loved ones on our expansive rooftop terrace overlooking Dubai's skyline. With premium grills, lounge chairs and seating areas, this is the perfect place to enjoy a delicious BBQ on a calm day.

DINE AL FRESCO STYLE



An outdoor lounge area with a large screen displaying a sports event. The area is furnished with wooden tables and chairs, and is surrounded by lush greenery and a modern building with large glass windows. The sky is clear and blue.

ENTERTAIN ENDLESSLY



Make the most of Dubai's incredible weather and spend your days and nights entertaining outdoors - screening live sports, iconic events and blockbuster movies, there's something fun for the whole family. When summer hits, cool down in our Clubhouse or rent out our Indoor Home Theatre for a night in with friends and family.



- CEILING COLOUR WITH MATCHING LIGHTING
- WOOD FINISHING
- ALL WORK APPOINTMENT FITTER
- WOOD STONE FINISH



- LUXURY SANITARYWARE
- WOOD STONE FINISH
- DIET COUNTERTOP WITH BATH
- WOOD
- WOOD FINISHING

FINISHING MATERIALS



- *FLOOR FINISH IS APPOINTMENT (APPOINTMENT FITTER)
- *DIET
- *MICROWAVE OVEN
- *ELECTRIC HOOD
- *COFFINER
- *CABINETS AND FITTERS (APPOINTMENT FITTER) & APPOINTMENT TO BE COORDINATED (SEE BACKCOVER FOR INFO)

- WOOD FINISH COLOUR
- WOOD FINISH FINISHING
- WOOD FINISH FINISHING
- WOOD FINISH FINISHING
- WOOD FINISH FINISHING
- WOOD FINISH FINISHING



- WOOD FINISHING CABINETS
- WOOD FINISHING FINISHING
- WOOD FINISHING FINISHING
- WOOD FINISHING FINISHING
- WOOD FINISHING FINISHING
- WOOD FINISHING FINISHING

*AVAILABILITY WITH COLOUR MATCHER (SEE INFO FOR COORDINATED COLOURS)

Lap up 2.7 km of pristine, turquoise waters and man-made beaches surrounded by lush greenery, board spaces, watersports and kids' play areas. A hub of activity and life, the Crystal Lagoon provides entertainment, fun and fitness for the whole family.

A CRYSTAL BLUE LAGOON



Surrounding with boutique shops, fashionable restaurants, quaint cafes, recreational facilities and everyday amenities, the French-inspired boulevard is a one-of-a-kind experience in the heart of Dubai. Enjoy a vibrant, dynamic lifestyle just minutes from your door.

A VIBRANT BOULEVARD



KEY LANDMARKS

1 MEYDAN ONE MALL / MEYDAN ONE TOWER
 1 minute from Dubai
 شارع الامير زايد/شارع الشيخ زايد
 Dubai, UAE

2 THE MEYDAN HOTEL
 2 minutes from Dubai
 شارع الامير زايد
 Dubai, UAE

3 ESR / AL KHAIL ROAD / MBZ ROAD
 10 minutes from Dubai
 شارع الشيخ محمد بن راشد آل مكتوم / شارع الشيخ محمد بن زايد
 Dubai, UAE

4 DOWNTOWN DUBAI
 10 minutes from Dubai
 شارع الشيخ زايد
 Dubai, UAE

5 DUBAI INTERNATIONAL AIRPORT
 15 minutes from Dubai
 مطار دبي الدولي
 Dubai, UAE

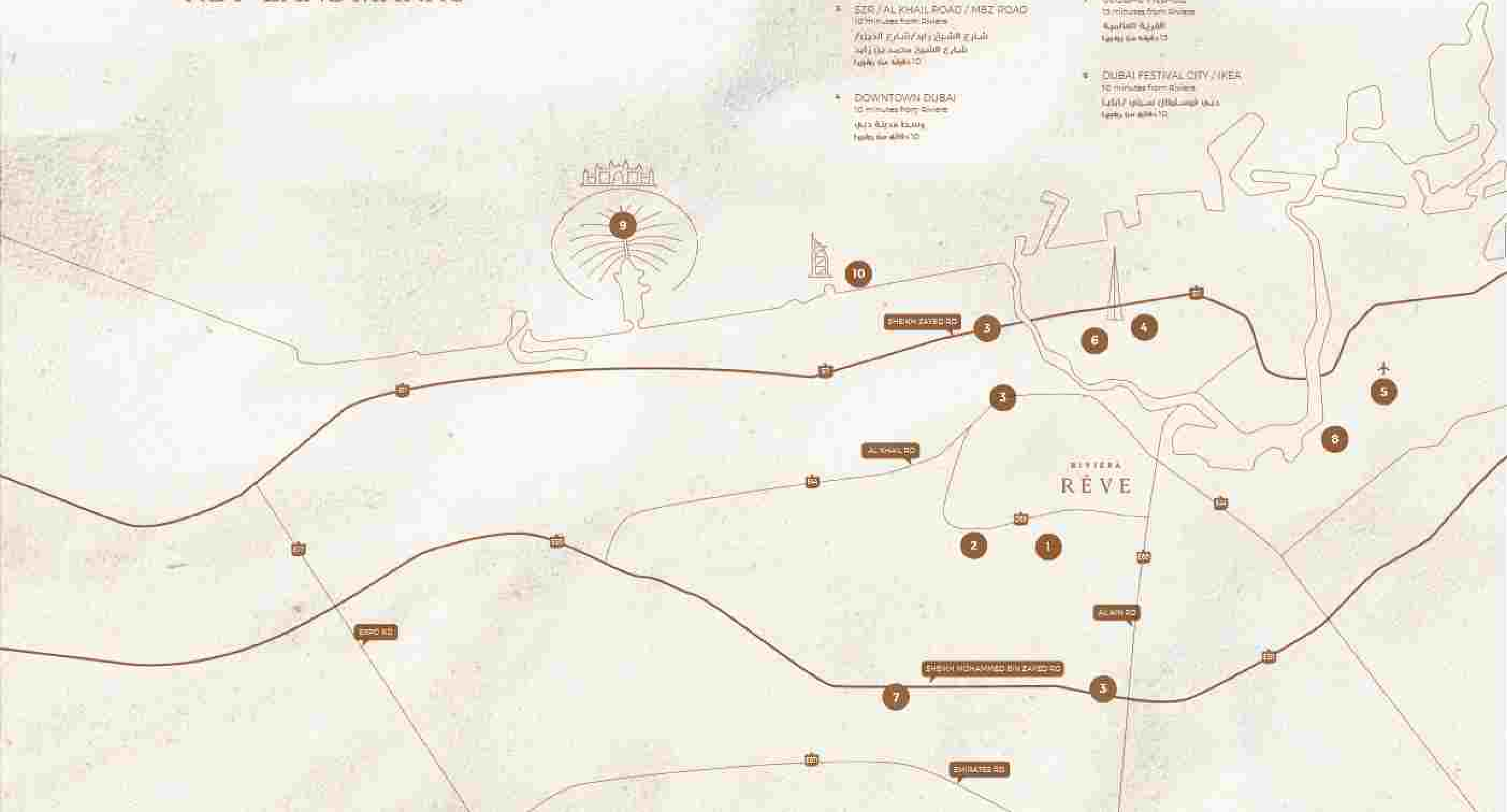
6 DIFC / BUSINESS BAY
 10 minutes from Dubai
 مركز دبي المالي العالمي - دبي
 Dubai, UAE

7 GLOBAL VILLAGE
 15 minutes from Dubai
 قرية عالمية
 Dubai, UAE

8 DUBAI FESTIVAL CITY / MIRA
 10 minutes from Dubai
 سيتي دبي / ميرا
 Dubai, UAE

9 PALM JUMEIRAH
 22 minutes from Dubai
 نخلة جميرا
 Dubai, UAE

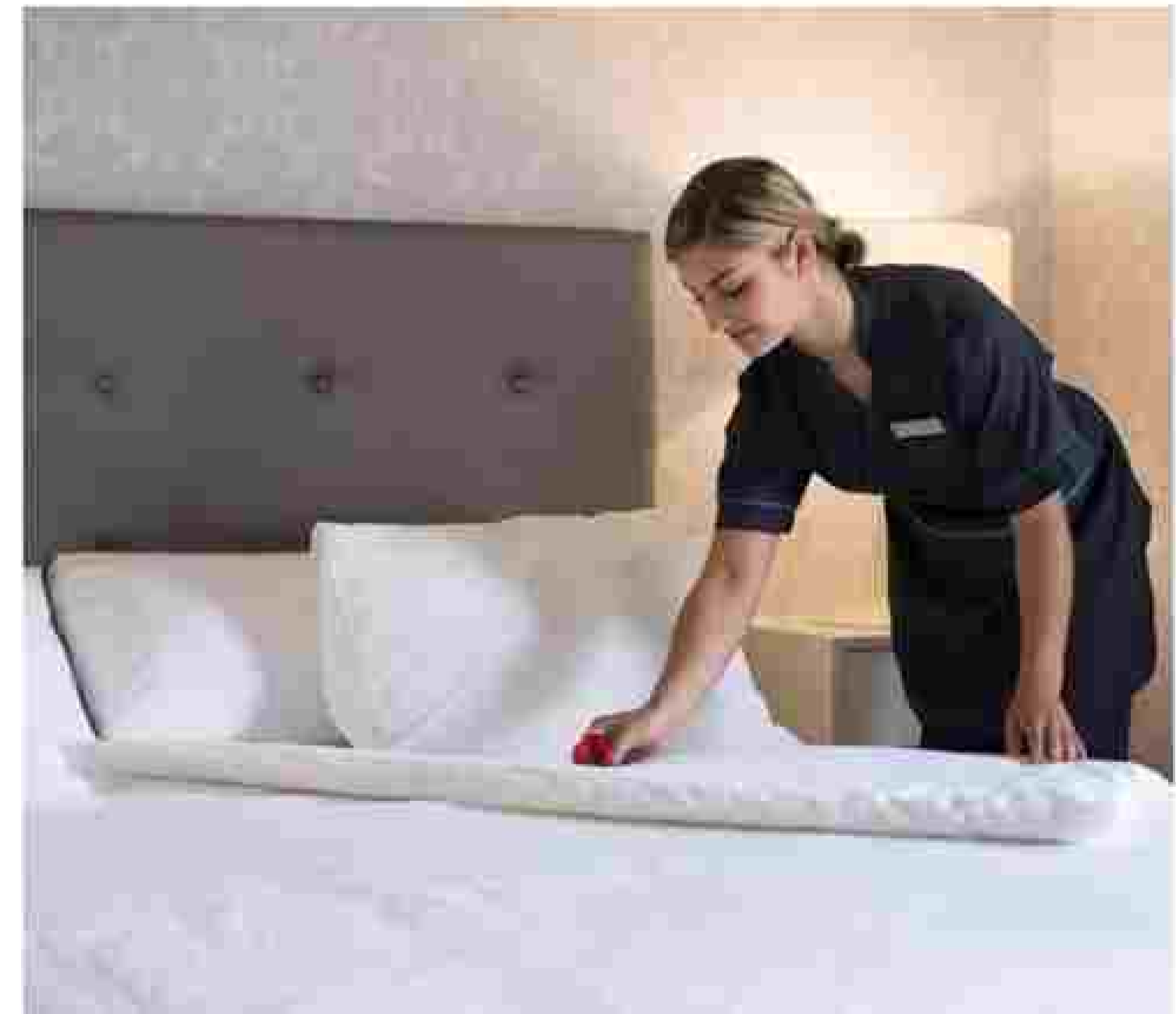
10 JUMEIRAH BEACH
 15 minutes from Dubai
 شاطئ جميرا
 Dubai, UAE





Experience the grandeur of Dubai from the 5-star hotel facing the crystal lagoon. This 5-star resort-style hotel offers luxurious suites, an array of retail boutiques, restaurants, entertainment outlets, a luxury spa, as well as its own private beach – all within walking distance from your home.

AZIZI HOTEL.
WELCOME TO HOSPITALITY LIKE NO OTHER.





THE MEYDAN HOTEL



DUBAI RACING CLUB - MEYDAN RACECOURSE

MEYDAN ONE MALL



An iconic location in the heart of Meydan, Riverside offers a visual connection to Burj Khalifa, Downtown Dubai, Business Bay & Sheikh Zayed Road. Surrounded by shopping malls, hotels, international schools, restaurants and Dubai's finest racing club, there is something for every family member.

INTERNATIONAL SCHOOLS



FLOOR PLAN
STUDIO TYPE 1
 1ST TO 18TH FLOOR



SUITE AREA - 39.65 SQFT
 TOTAL AREA - 44.45 SQFT

TYPICAL UNITS

FLOOR PLAN
1 BEDROOM TYPE 1
 1ST TO 26TH FLOOR



SUITE AREA - 64.77 SQFT
 TOTAL AREA - 76.75 SQFT

TYPICAL UNITS

FLOOR PLAN

2 BEDROOM TYPE 1

1ST TO 18TH FLOOR



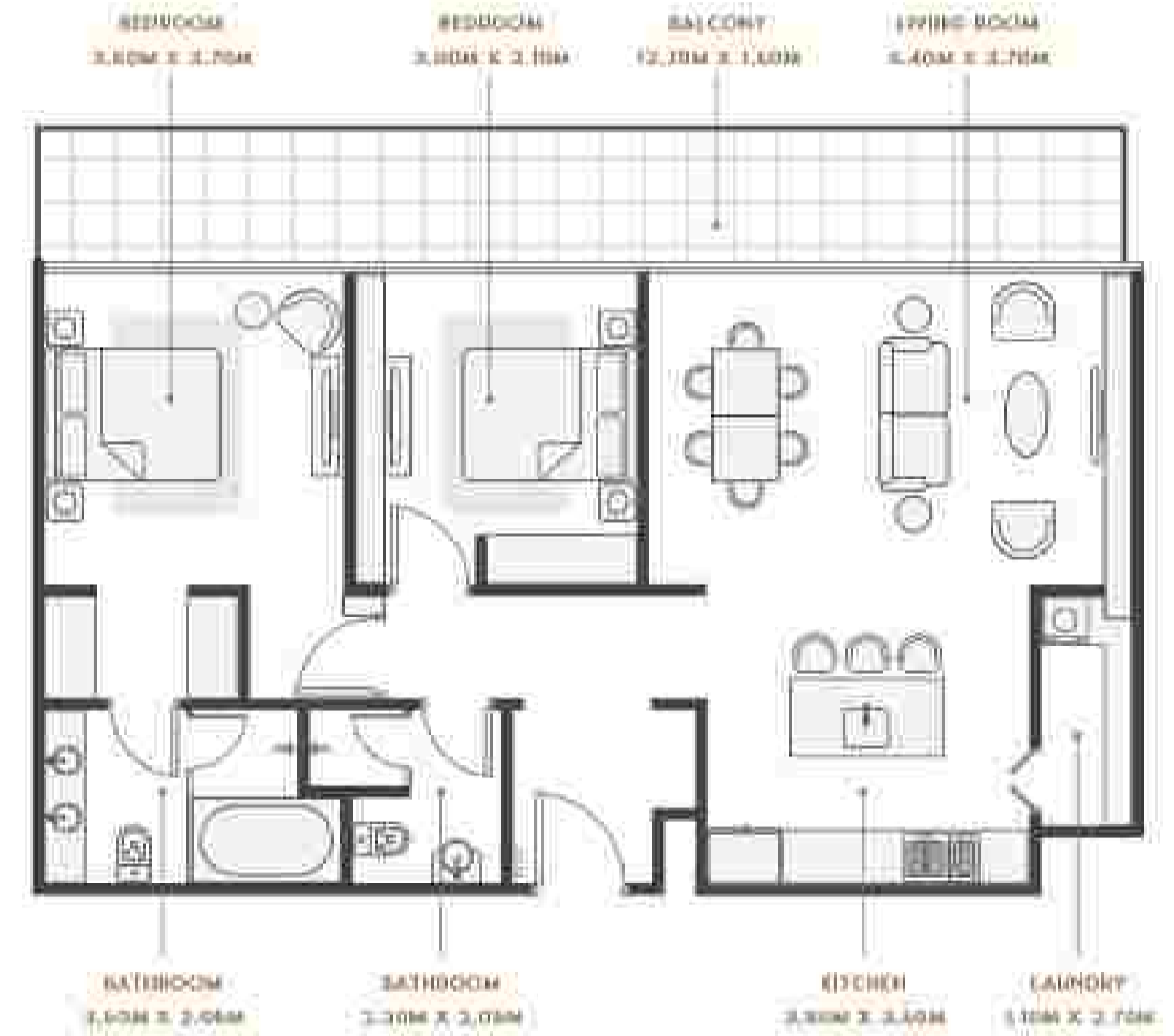
SUITE AREA / 1055.64 SQ FT
TOTAL AREA / 1228.85 SQ FT

TYPICAL UNITS

FLOOR PLAN

2 BEDROOM TYPE 2

2ND TO 18TH FLOOR



SUITE AREA / 1012.87 SQ FT
TOTAL AREA / 1247.88 SQ FT

TYPICAL UNITS

FLOOR PLAN

3 BEDROOM TYPE 1

19TH TO 26TH FLOOR



SUITE AREA: 1100.88 SQFT
TOTAL AREA: 1117.70 SQFT

TYPICAL UNITS

FLOOR PLAN

3 BEDROOM TYPE 2

19TH TO 26TH FLOOR



SUITE AREA: 1333.27 SQFT
TOTAL AREA: 1461.70 SQFT

TYPICAL UNITS