



CAPITAL **ONE**

LUXURY  
**REDEFINED**





## ABOUT **DEVELOPER**

### **BUILDING TOMORROW'S URBAN LEGACY**

Centurion Developers is a leader in reshaping urban environments through innovative, sustainable real estate development.

Focused on creating vibrant communities where people can live, work, and relax, we blend cutting-edge design with environmental stewardship to ensure our projects are both functional and future ready.

- Committed to integrity, sustainability, and customer satisfaction
- Strive to exceed expectations
- Deliver lasting value for communities and stakeholders
- Vision goes beyond construction
- Enhance quality of life and foster resilient thriving cities with every development



## ABOUT **ARCHITECT**

### **DESIGN AT WORLD SCALE.**

AE7 is a multi-disciplinary design firm built to be a global organization. Our practice transcends traditional borders, providing innovative approaches to evolving challenges.

We succeed through structuring our practice differently through the principles we apply, the markets we reach, the cultures we intimately know, and the solutions we ultimately offer.

This character informs a design approach largely unrestrained by conventional limitations. The breadth of knowledge we draw upon for services ranging from concept through construction is as diverse as our workforce, reflecting our collective transnational imagination.

We operate as partners to our clients for each project, providing comprehensive services and flexible solutions that ensure development potential that exceeds expectations.



## ABOUT **CAPITAL ONE**

Capital One introduces a new standard of luxury office space in the heart of Motor City, offering Category A offices that rival the best in town. Designed with a futuristic and floating concept, Capital One combines Layering and Coherence to create a seamless and inspiring work environment. Each office is crafted with flawless finishing and top-tier amenities to support a productive business day. With a unique location, breathtaking design, and thoughtful details, Capital One is the ideal destination for dynamic businesses that seek sophistication and functionality.

All images used are for illustrative purposes only and do not represent the actual size, features, specifications, fittings and furnishings. The developer reserves the right to make revisions / alterations, at its absolute discretion, without any liability whatsoever.

ELEGANCE  
INSPIRES  
**EXCELLENCE**





## ABOUT **MOTORCITY**

Motor City offers a vibrant, connected lifestyle. Nestled between major highways, enjoy easy access to Dubai's top attractions and beyond.

Plus, relax in a green, suburban community just minutes from airports and iconic landmarks.

# LOCATION MAP

- 1. Dubai Autodrome ————— **4Min**
- 2. Uptown Motor City ————— **5Min**
- 3. Arabian Ranches ————— **7Min**
- 4. Butterfly Garden ————— **7Min**
- 5. Dubai Polo & Equestrian Club ————— **8Min**
- 6. Dubai Hills Mall ————— **9Min**
- 7. Global Village ————— **10Min**
- 8. Dubai Production City ————— **12Min**
- 9. Mall of Emirates ————— **17Min**
- 10. Burj Al Arab ————— **21Min**
- 11. Dubai Downtown ————— **20Min**
- 12. Dubai International Airport ————— **22Min**
- 13. Dubai Maktoum International Airport — **22Min**



All images used are for illustrative purposes only and do not represent the actual size, features, specifications, fittings and furnishings. The developer reserves the right to make revisions, alterations, at its absolute discretion, without any liability whatsoever.



ELEGANT.  
**DISTINCTIVE.**  
**PRIME.**





DROP OFF



All images used are for illustrative purposes only and do not represent the actual size, features, specifications, fittings and furnishings. The developer reserves the right to make revisions / alterations, at its absolute discretion, without any liability whatsoever.

DROP OFF



All images used are for illustrative purposes only and do not represent the actual size, features, specifications, fittings and furnishings. The developer reserves the right to make revisions / alterations, at its absolute discretion, without any liability whatsoever.

DROP OFF

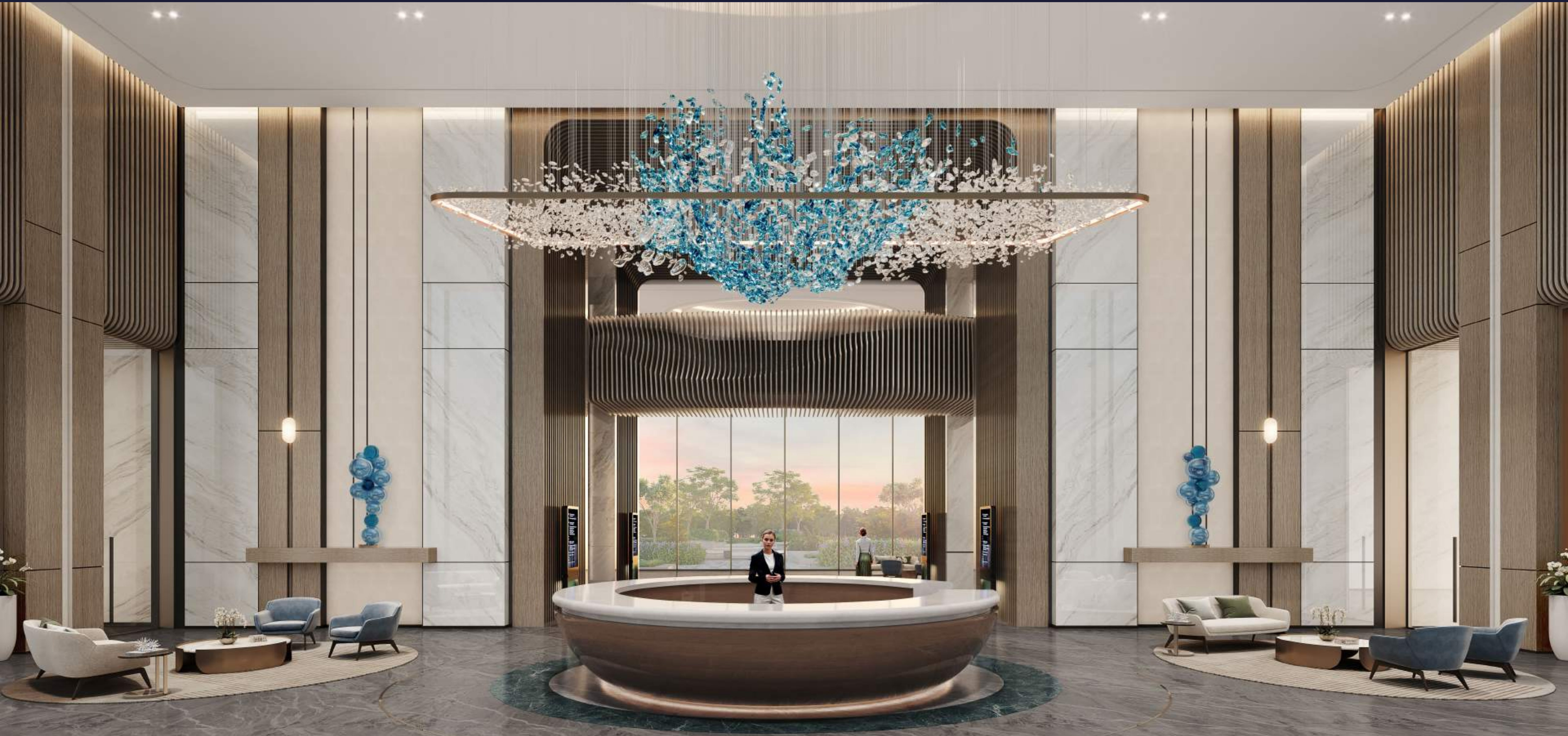


All images used are for illustrative purposes only and do not represent the actual size, features, specifications, fittings and furnishings. The developer reserves the right to make revisions / alterations, at its absolute discretion, without any liability whatsoever.

PODIUM LEVEL



All images used are for illustrative purposes only and do not represent the actual size, features, specifications, fittings and furnishings. The developer reserves the right to make revisions / alterations, at its absolute discretion, without any liability whatsoever.













All images used are for illustrative purposes only and do not represent the actual specifications, fittings and furnishings. The developer reserves the right to make revisions/alterations, at its absolute discretion, without any liability whatsoever.









# CORRIDOR AREA



All images used are for illustrative purposes only and do not represent the actual size, features, specifications, fittings and furnishings. The developer reserves the right to make revisions / alterations, at its absolute discretion, without any liability whatsoever.



OFFICE SPACE



All images used are for illustrative purposes only and do not represent the actual size, features, specifications, fittings and furnishings. The developer reserves the right to make revisions / alterations, at its absolute discretion, without any liability whatsoever.

OFFICE SPACE



All images are for illustrative purposes only and do not represent the actual sizes, features, specifications, fittings and furnishings. The developer reserves the right to make revisions / alterations, at its sole discretion, without any liability whatsoever.

OFFICE SPACE



All images used are for illustrative purposes only and do not represent the actual size, features, specifications, fittings and furnishings. The developer reserves the right to make revisions / alterations, at its absolute discretion, without any liability whatsoever.

OFFICE SPACE



All images used are for illustrative purposes only and do not represent the actual size, features, specifications, fittings and furnishings. The developer reserves the right to make revisions / alterations, at its absolute discretion, without any liability whatsoever.



# WASHROOMS



All images used are for illustrative purposes only and do not represent the actual size, features, specifications, fittings and furnishings. The developer reserves the right to make revisions / alterations, at its absolute discretion, without any liability whatsoever.



CENTURION

PRESENTED BY  
**OCTA**  
PROPERTIES