

# MANGROVE

CREEK BEACH

---

FLOOR PLANS - BUILDING 1

---

EMAAR

# MANGROVE

CREEK BEACH

BUILDING - 1

## 2 BEDROOM

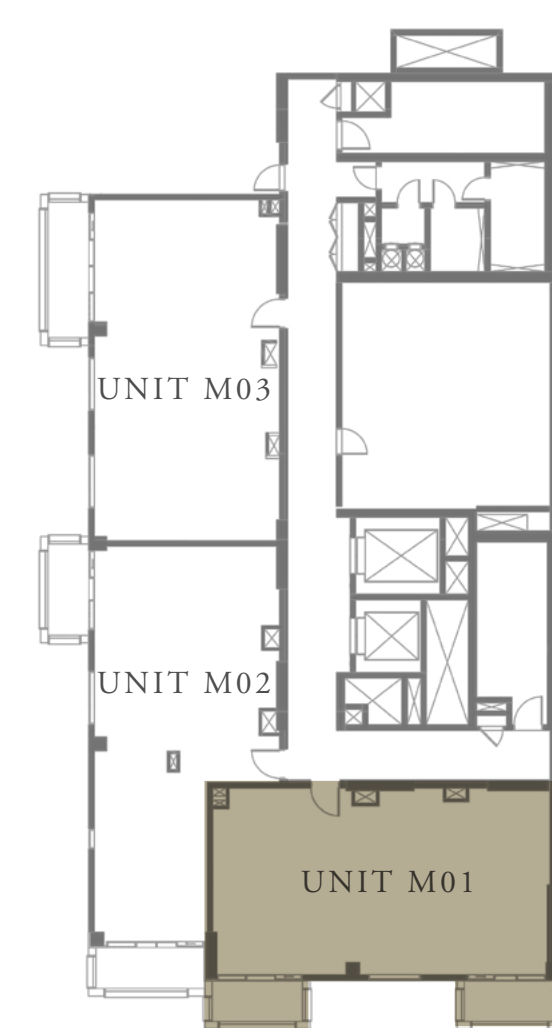
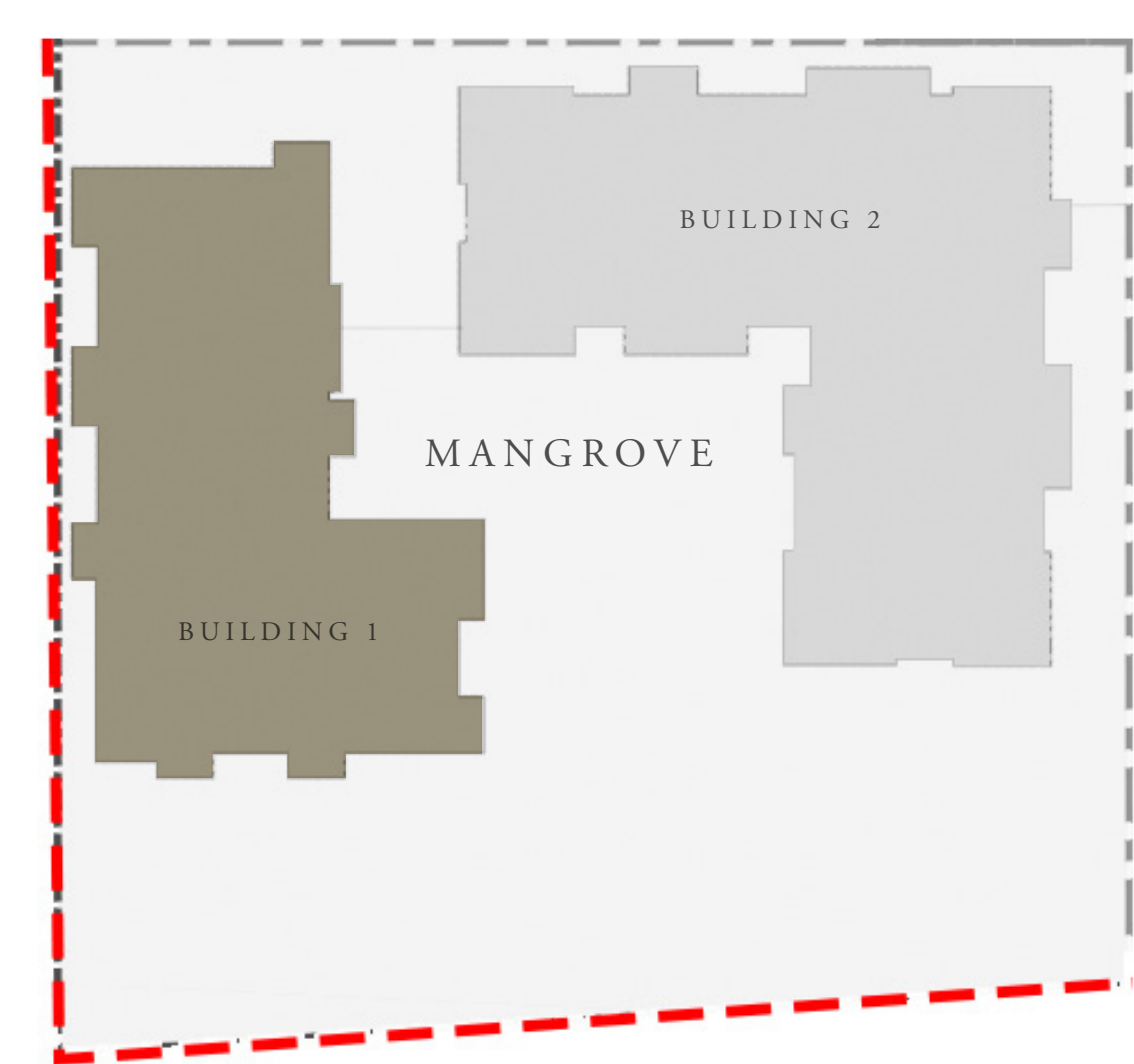
LEVEL MF UNIT M01

APARTMENT AREA	929.25 SQ.FT.	86.33 SQ.M.
BALCONY AREA	126.69 SQ.FT.	11.77 SQ.M.
TOTAL AREA	1055.94 SQ.FT.	98.10 SQ.M.

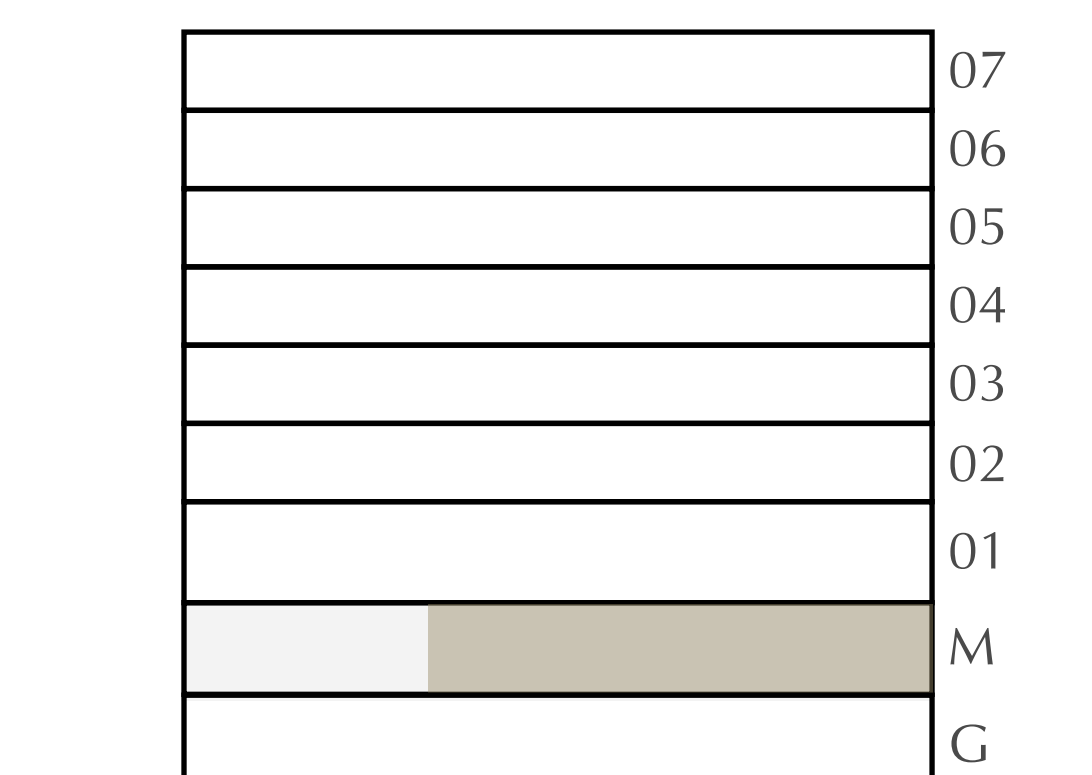


CANAL

PARK



KEY PLAN



FLOOR PLAN 1. All dimensions are in imperial and metric, and measured from finish to finish excluding construction tolerances. 2. All materials, dimensions, and drawings are approximate only. 3. Information is subject to change without notice, at developer's absolute discretion. 4. Actual area may vary from the stated area. 5. Drawings not to scale. 6. All images used are for illustrative purposes only and do not represent the actual size, features, specifications, fittings, and furnishings. 7. The developer reserves the right to make revisions / alterations, at it's absolute discretion, without any liability whatsoever.

# MANGROVE

CREEK BEACH

BUILDING - 1

## 2 BEDROOM

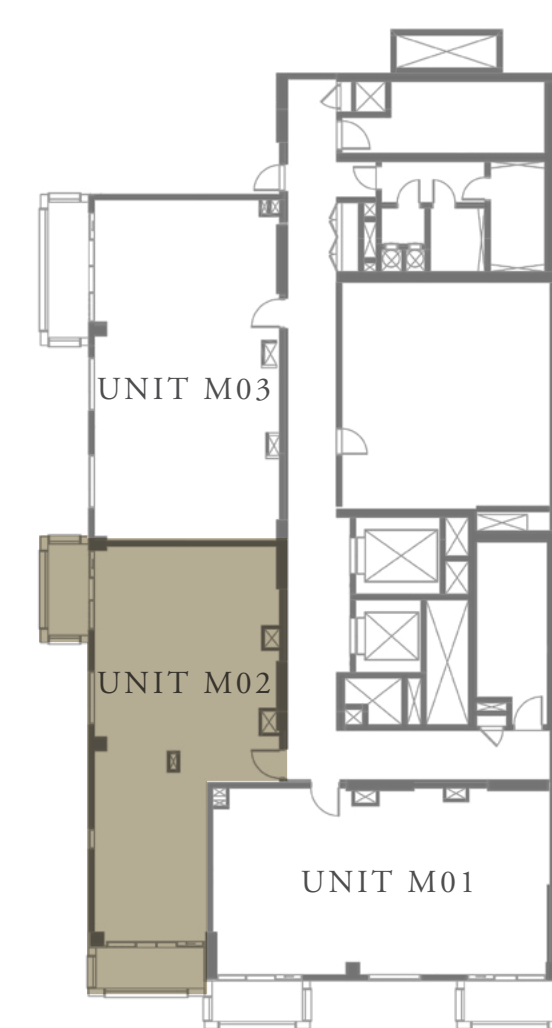
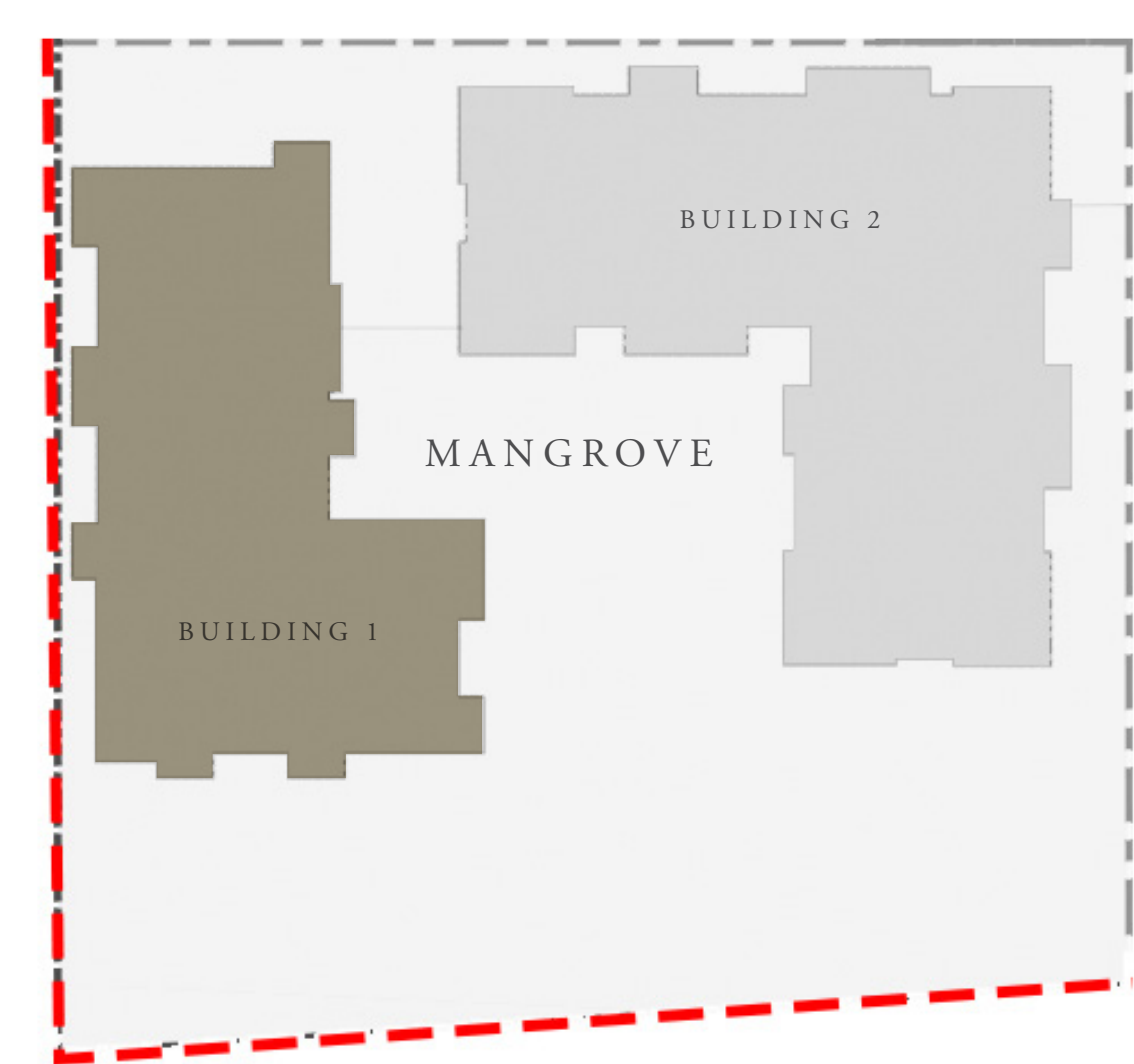
LEVEL MF

UNIT M02

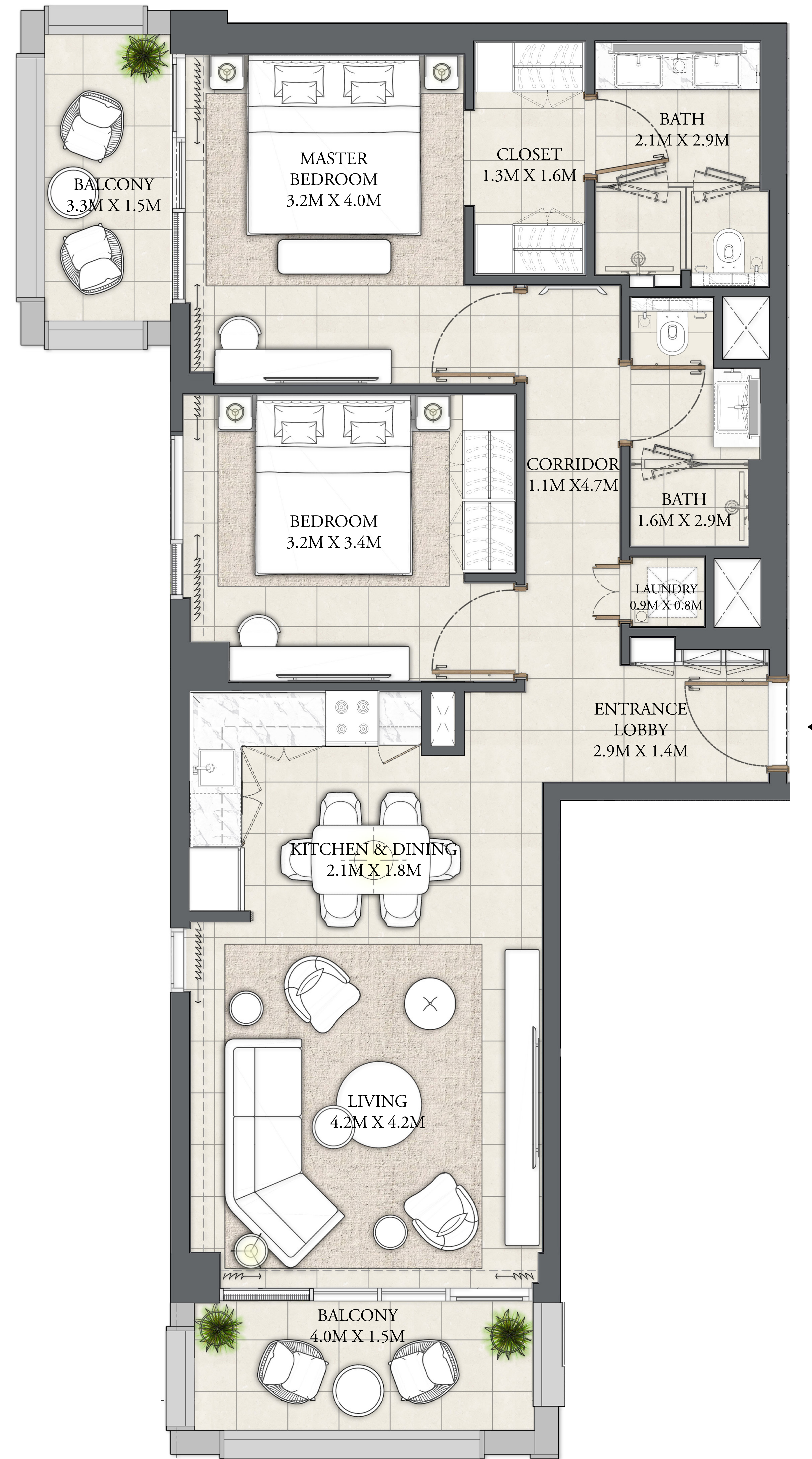
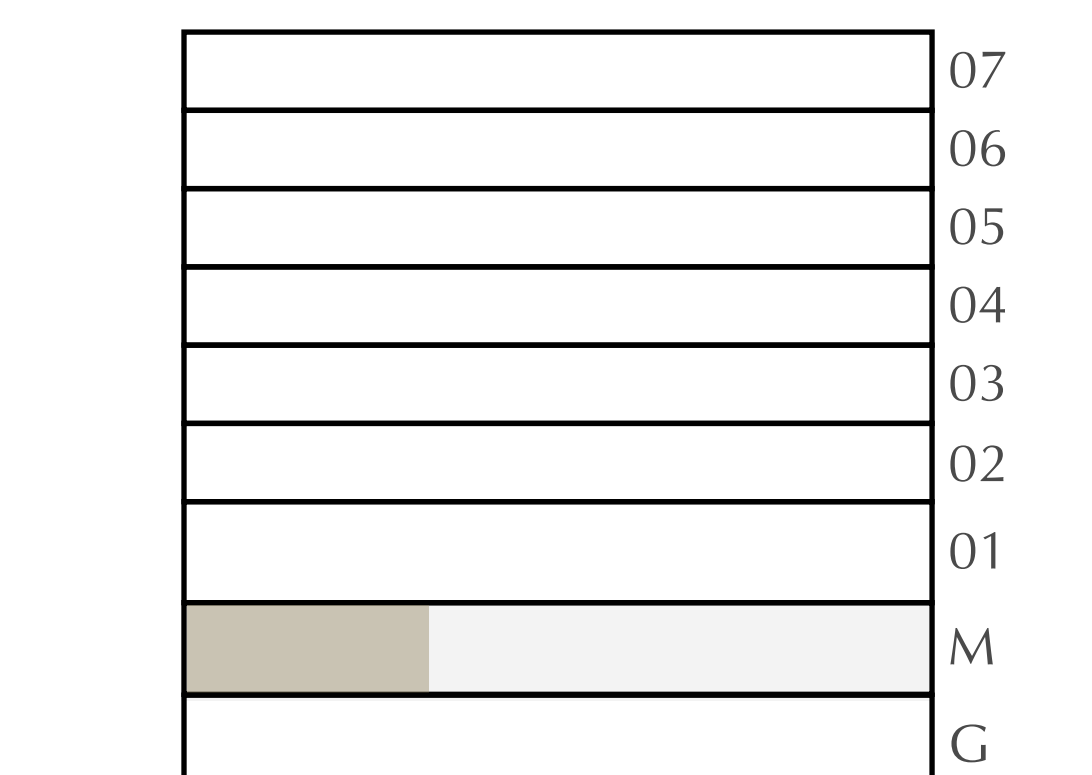
APARTMENT AREA	917.73 SQ.FT.	85.26 SQ.M.
BALCONY AREA	141.55 SQ.FT.	13.15 SQ.M.
TOTAL AREA	1059.28 SQ.FT.	98.41 SQ.M.

CANAL

PARK



KEY PLAN



FLOOR PLAN 1. All dimensions are in imperial and metric, and measured from finish to finish excluding construction tolerances. 2. All materials, dimensions, and drawings are approximate only. 3. Information is subject to change without notice, at developer's absolute discretion. 4. Actual area may vary from the stated area. 5. Drawings not to scale. 6. All images used are for illustrative purposes only and do not represent the actual size, features, specifications, fittings, and furnishings. 7. The developer reserves the right to make revisions / alterations, at it's absolute discretion, without any liability whatsoever.

# MANGROVE

CREEK BEACH

BUILDING - 1

## 2 BEDROOM

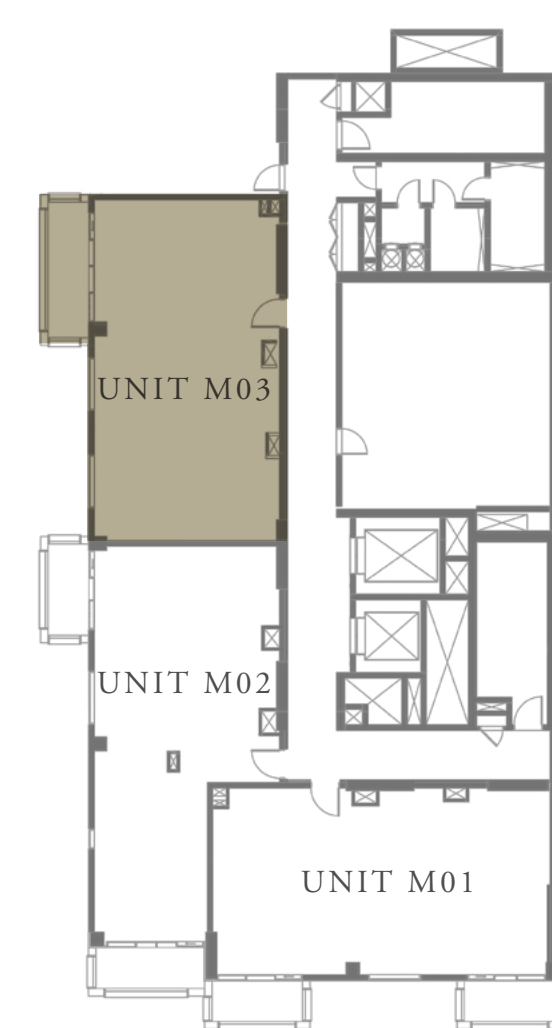
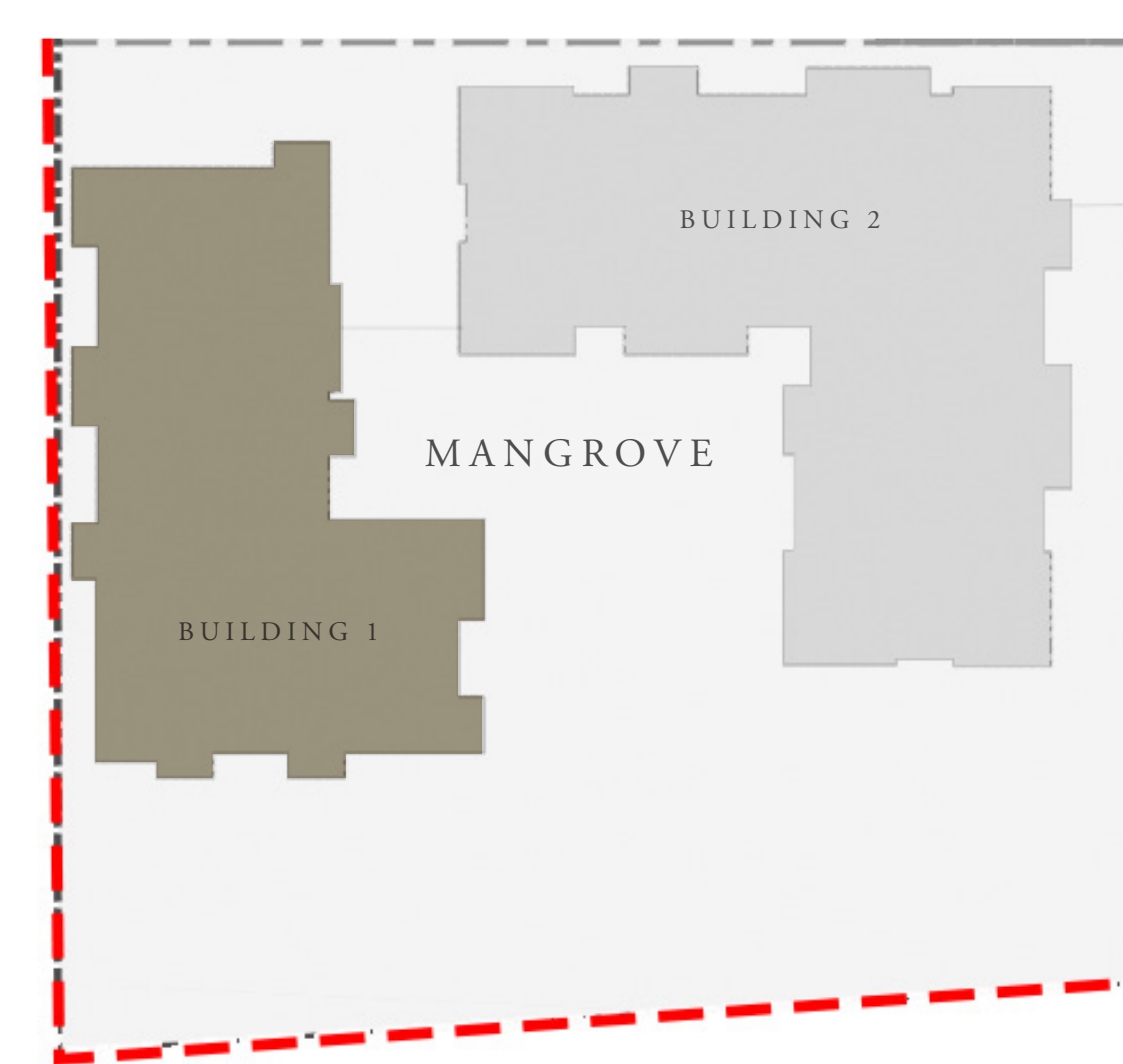
LEVEL MF

UNIT M03

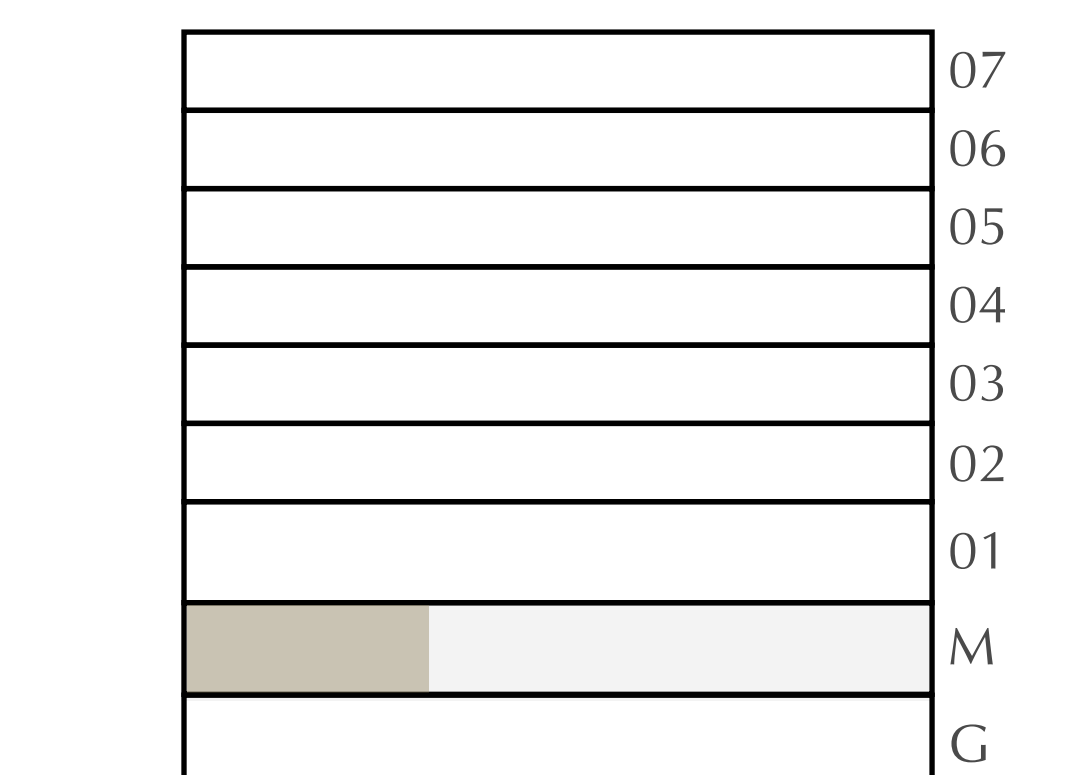
APARTMENT AREA	932.69 SQ.FT.	86.65 SQ.M.
BALCONY AREA	92.57 SQ.FT.	8.60 SQ.M.
TOTAL AREA	1025.26 SQ.FT.	95.25 SQ.M.

CANAL

PARK



KEY PLAN



FLOOR PLAN 1. All dimensions are in imperial and metric, and measured from finish to finish excluding construction tolerances. 2. All materials, dimensions, and drawings are approximate only. 3. Information is subject to change without notice, at developer's absolute discretion. 4. Actual area may vary from the stated area. 5. Drawings not to scale. 6. All images used are for illustrative purposes only and do not represent the actual size, features, specifications, fittings, and furnishings. 7. The developer reserves the right to make revisions / alterations, at its absolute discretion, without any liability whatsoever.

# MANGROVE

CREEK BEACH

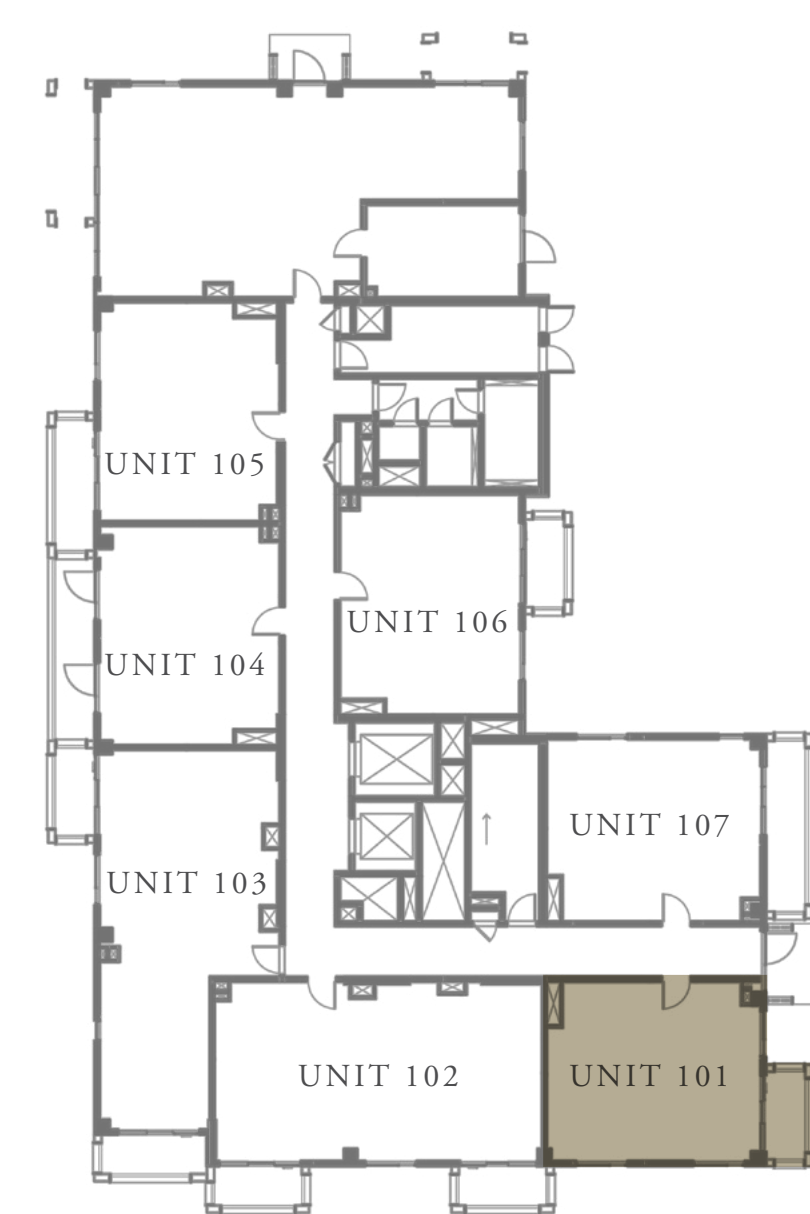
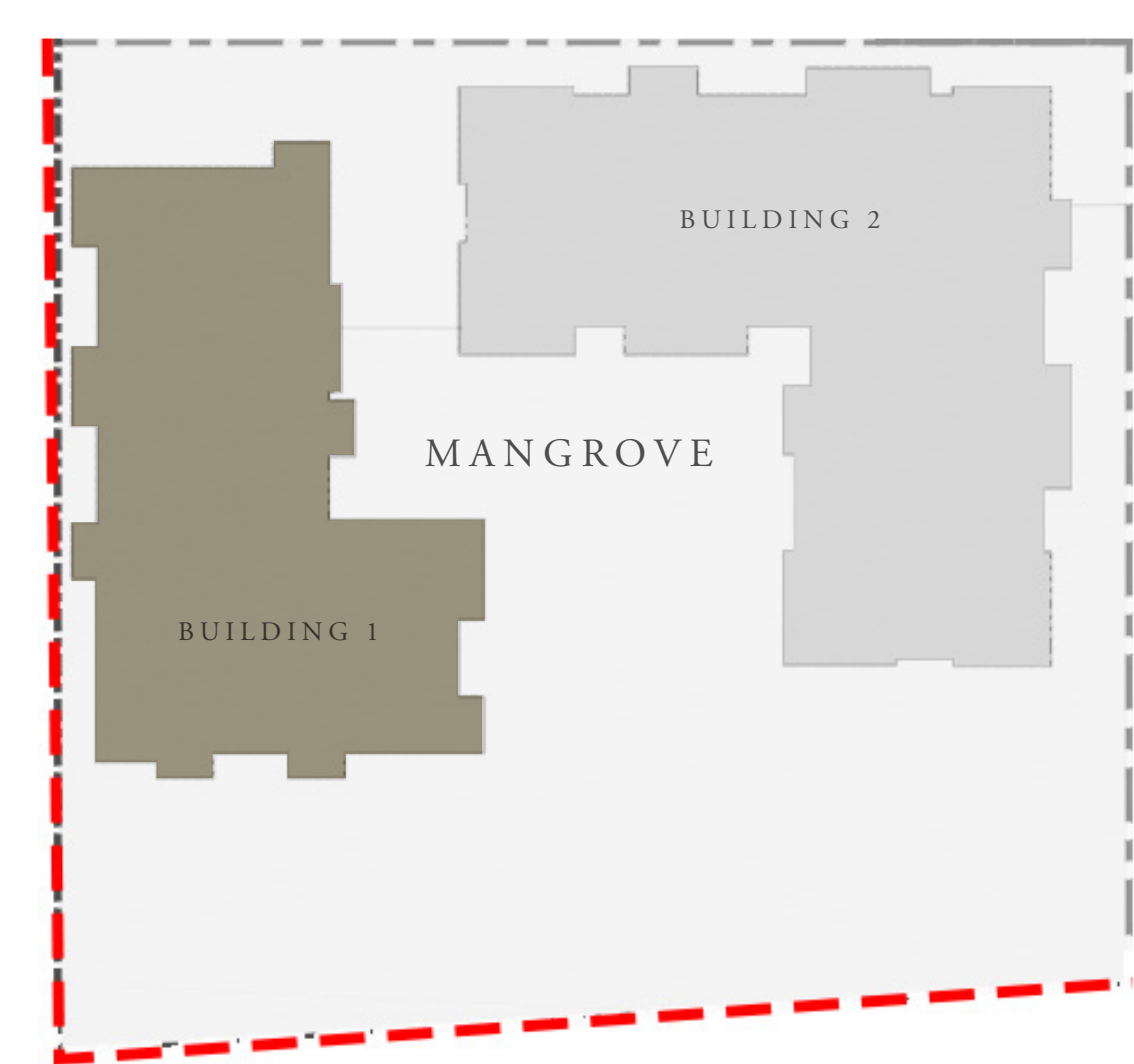
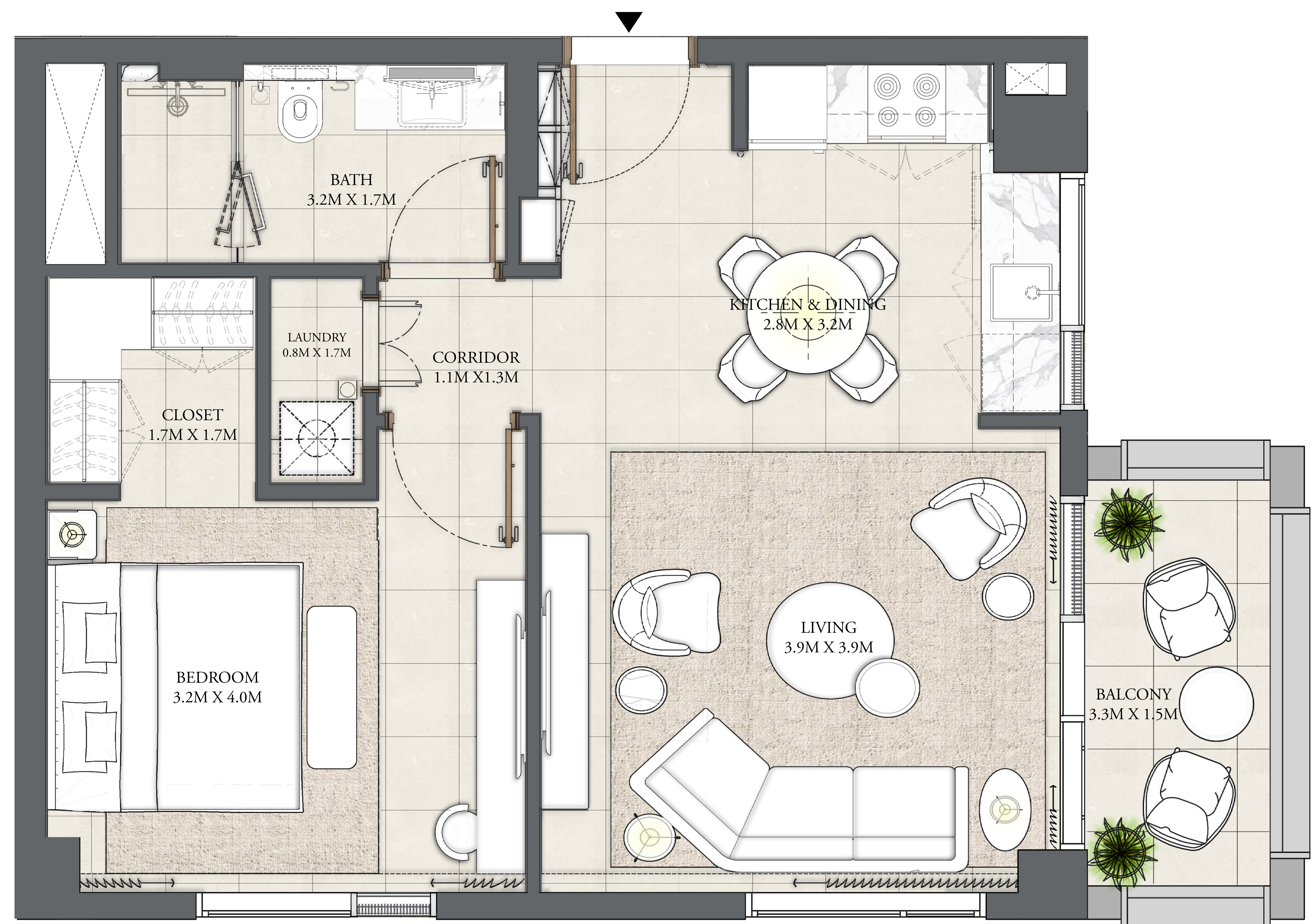
BUILDING - 1

## 1 BEDROOM

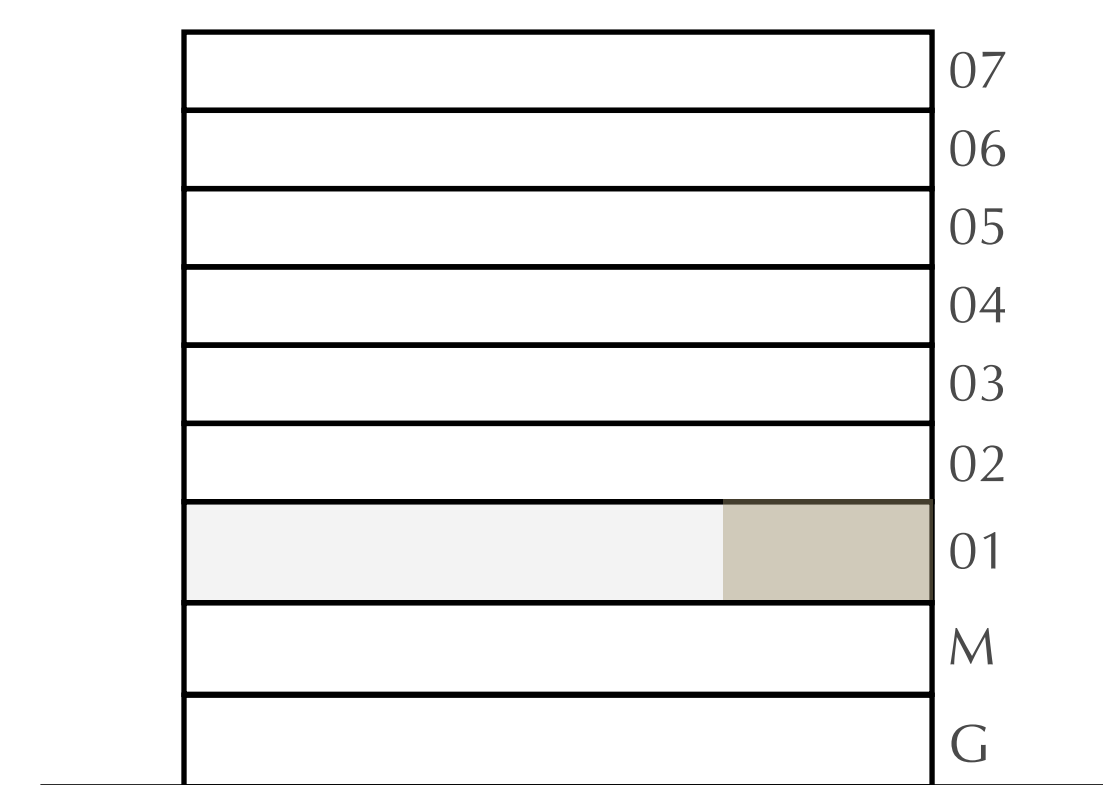
LEVEL 1

UNIT 101

APARTMENT AREA	609.56 SQ.FT.	56.63 SQ.M.
BALCONY AREA	63.51 SQ.FT.	5.90 .M.
TOTAL AREA	673.07 SQ.FT.	62.53 SQ.M.



KEY PLAN



FLOOR PLAN 1. All dimensions are in imperial and metric, and measured from finish to finish excluding construction tolerances. 2. All materials, dimensions, and drawings are approximate only. 3. Information is subject to change without notice, at developer's absolute discretion. 4. Actual area may vary from the stated area. 5. Drawings not to scale. 6. All images used are for illustrative purposes only and do not represent the actual size, features, specifications, fittings, and furnishings. 7. The developer reserves the right to make revisions / alterations, at it's absolute discretion, without any liability whatsoever.

# MANGROVE

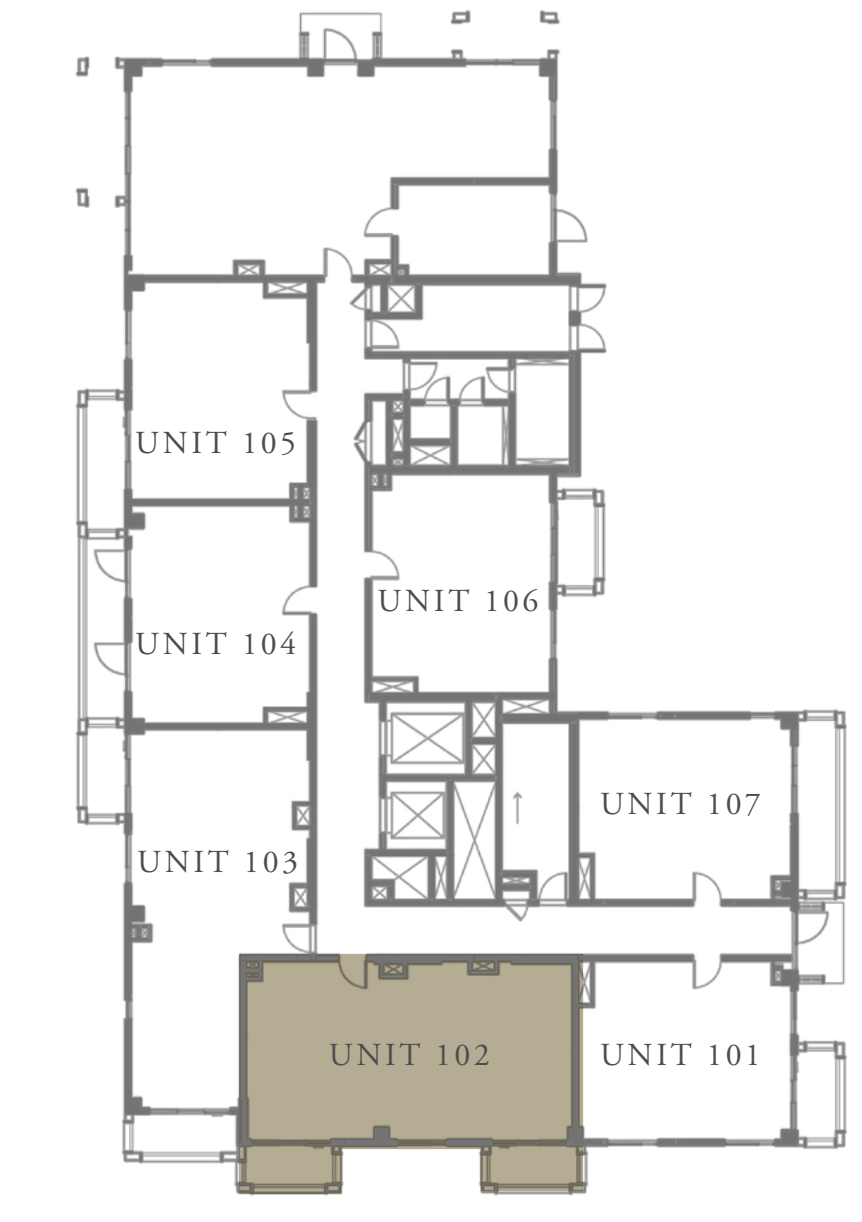
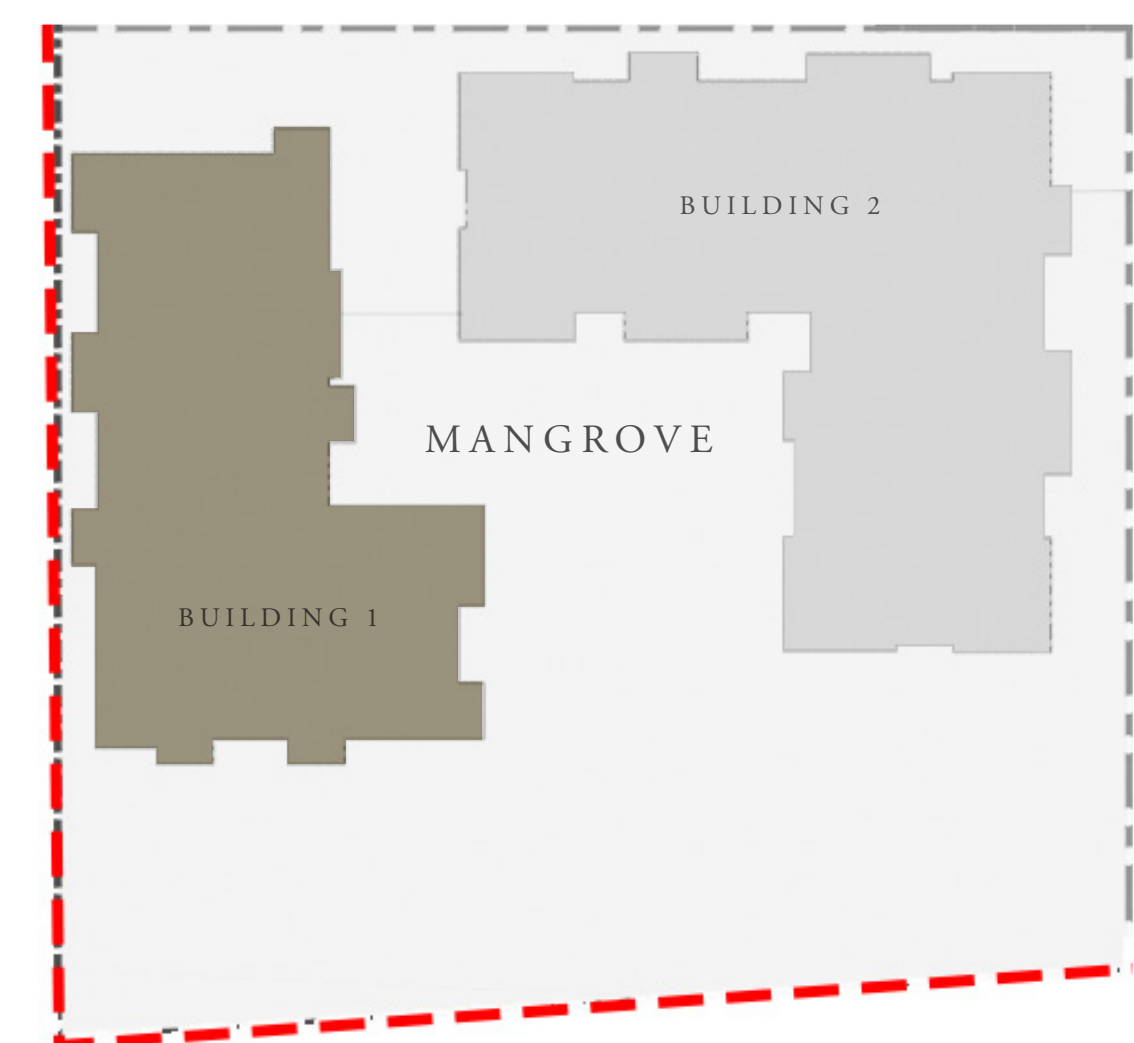
CREEK BEACH

BUILDING - 1

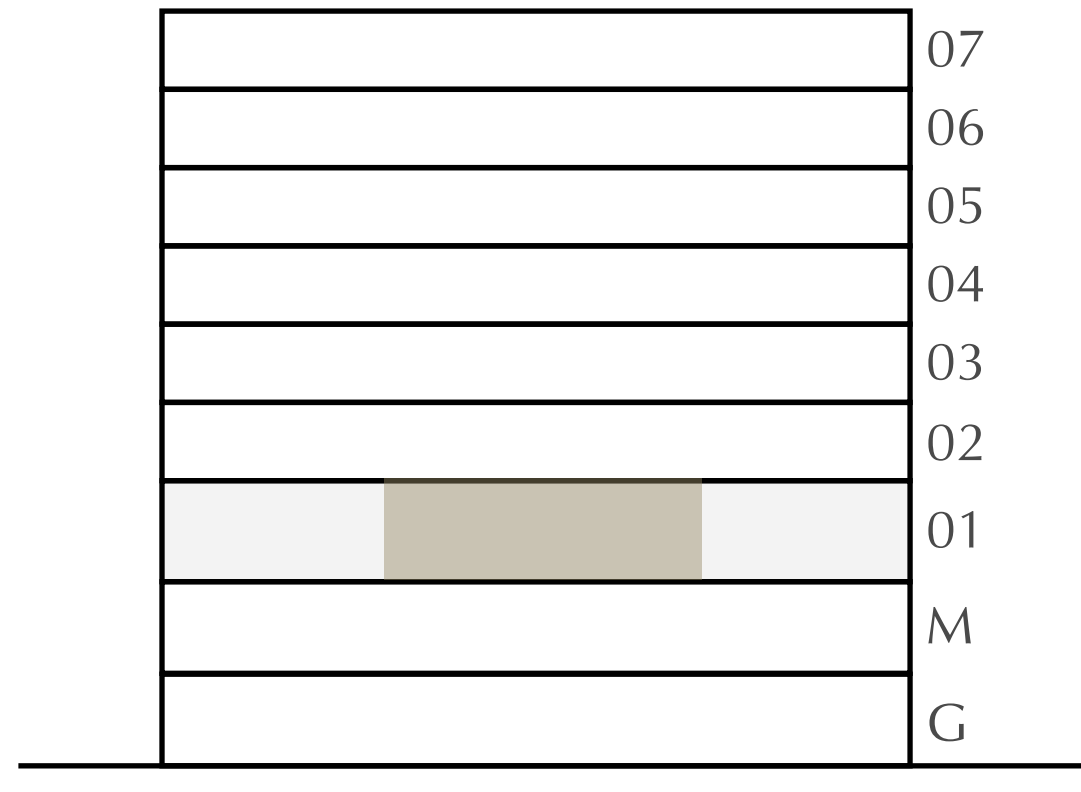
## 2 BEDROOM

LEVEL 1 UNIT 102

APARTMENT AREA	929.25 SQ.FT.	86.33 SQ.M.
BALCONY AREA	126.80 SQ.FT.	11.78 SQ.M.
TOTAL AREA	1056.05 SQ.FT.	98.11 SQ.M.



KEY PLAN



FLOOR PLAN 1. All dimensions are in imperial and metric, and measured from finish to finish excluding construction tolerances. 2. All materials, dimensions, and drawings are approximate only. 3. Information is subject to change without notice, at developer's absolute discretion. 4. Actual area may vary from the stated area. 5. Drawings not to scale. 6. All images used are for illustrative purposes only and do not represent the actual size, features, specifications, fittings, and furnishings. 7. The developer reserves the right to make revisions / alterations, at its absolute discretion, without any liability whatsoever.

# MANGROVE

CREEK BEACH

BUILDING - 1

## 2 BEDROOM

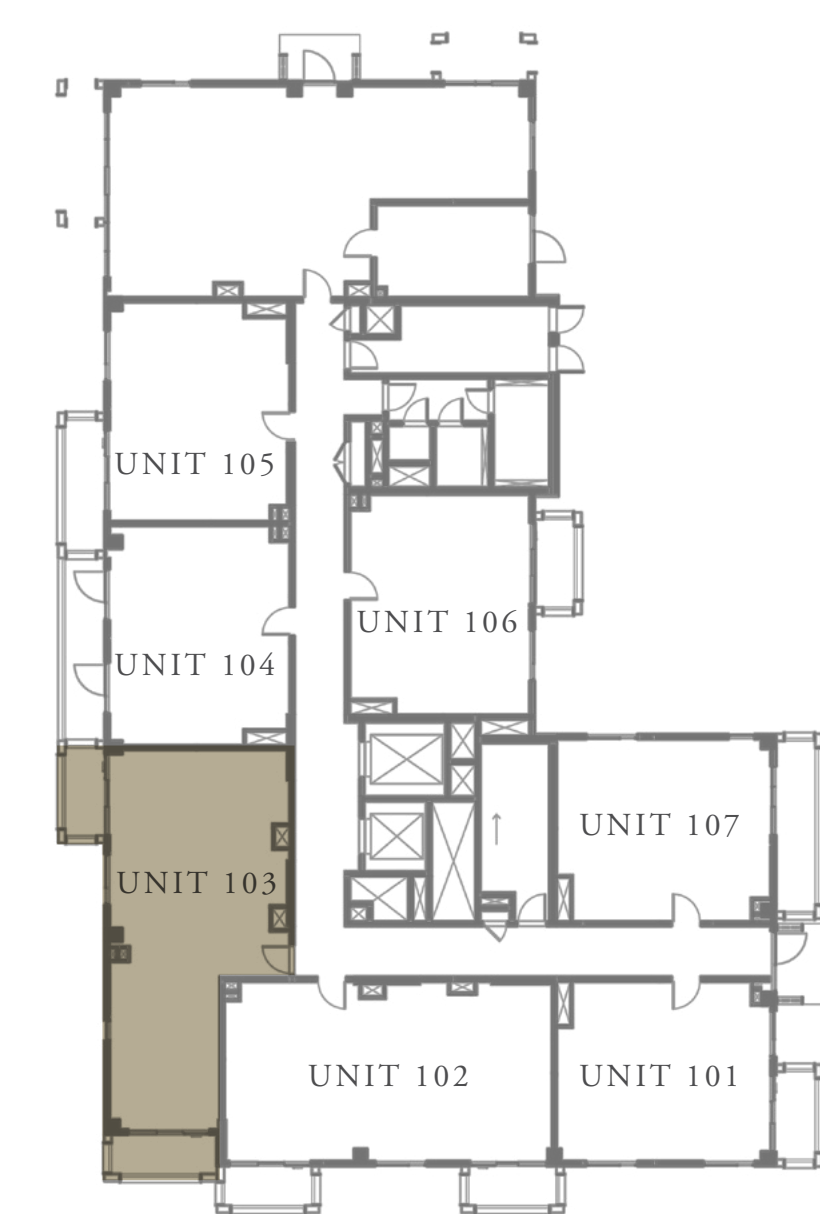
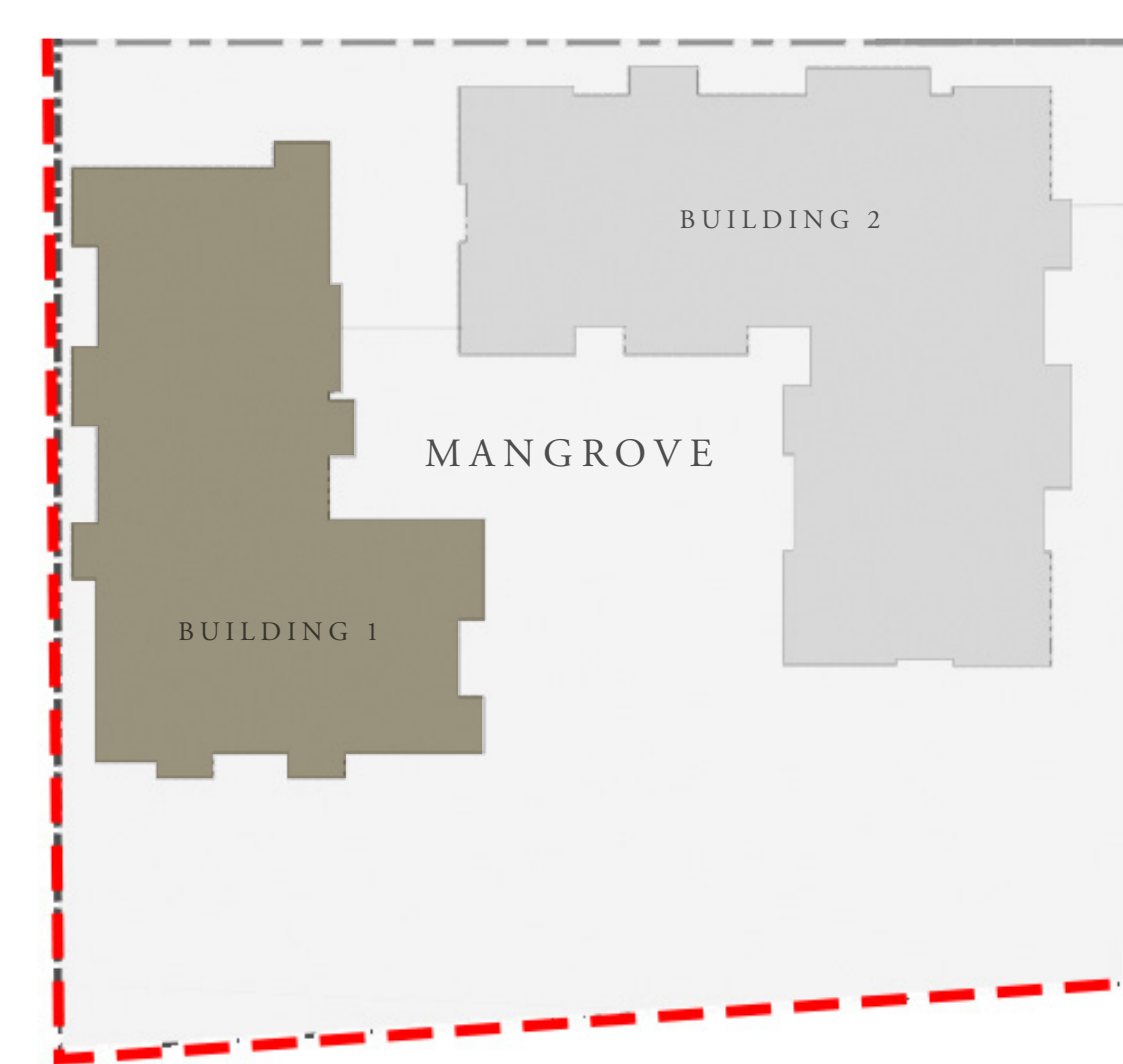
LEVEL 1

UNIT 103

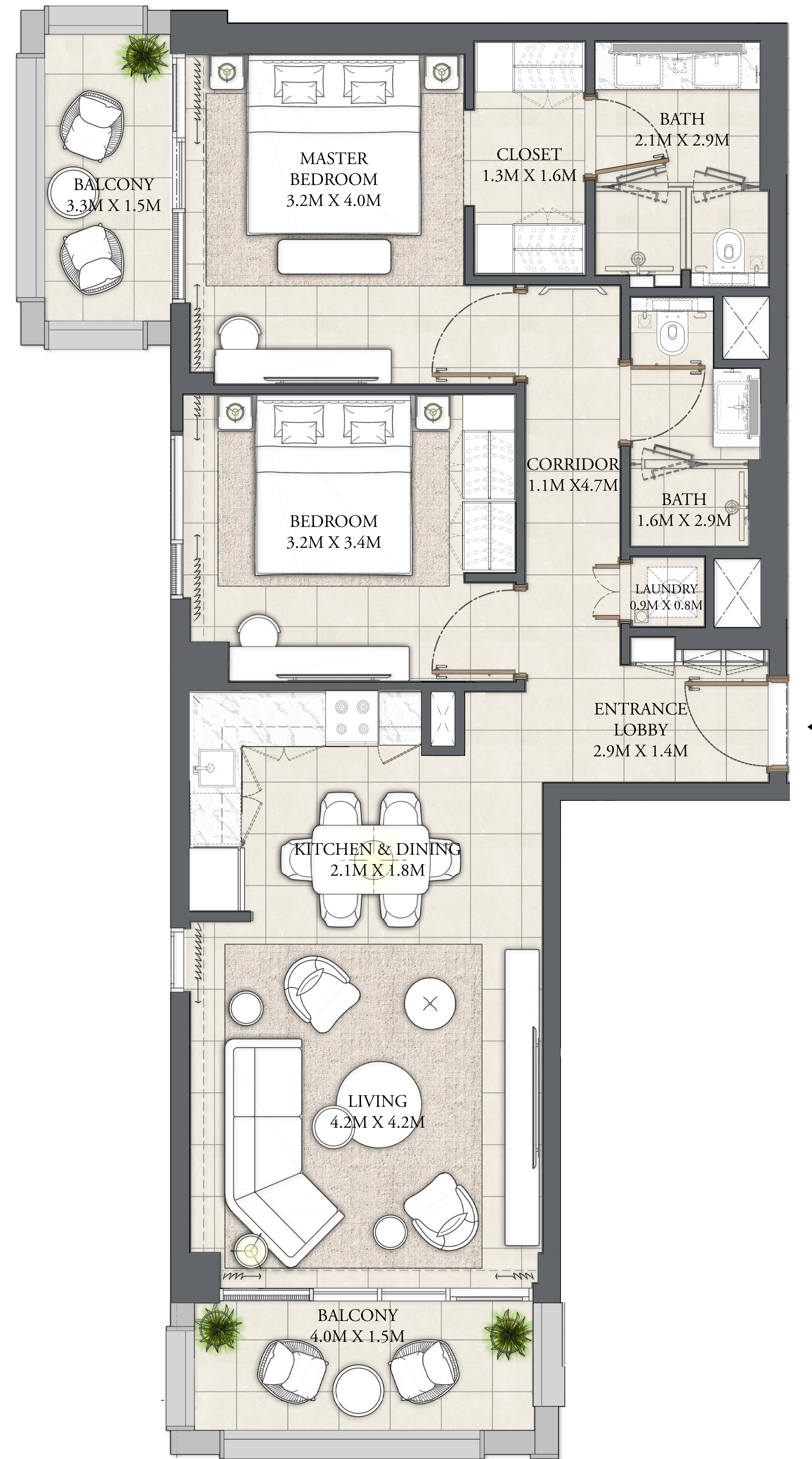
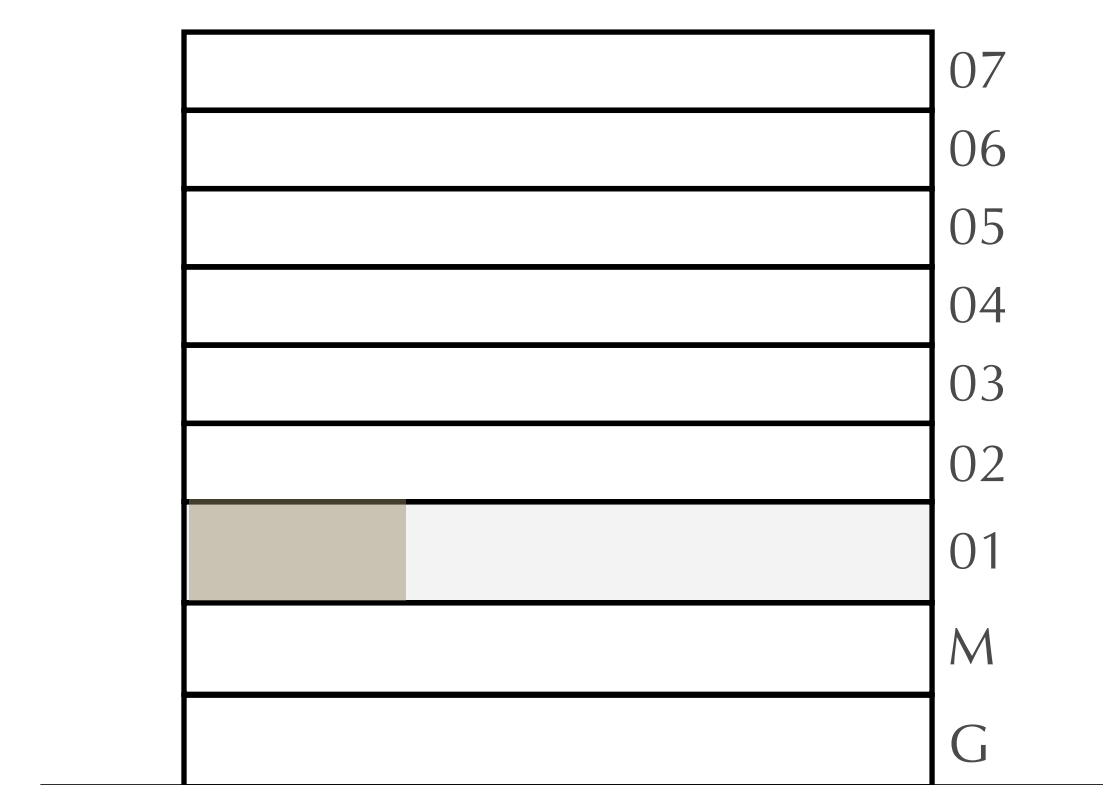
APARTMENT AREA	917.52 SQ.FT.	85.24 SQ.M.
BALCONY AREA	141.87 SQ.FT.	13.18 SQ.M.
TOTAL AREA	1059.39 SQ.FT.	98.42 SQ.M.

CANAL

PARK



KEY PLAN



FLOOR PLAN 1. All dimensions are in imperial and metric, and measured from finish to finish excluding construction tolerances. 2. All materials, dimensions, and drawings are approximate only. 3. Information is subject to change without notice, at developer's absolute discretion. 4. Actual area may vary from the stated area. 5. Drawings not to scale. 6. All images used are for illustrative purposes only and do not represent the actual size, features, specifications, fittings, and furnishings. 7. The developer reserves the right to make revisions / alterations, at its absolute discretion, without any liability whatsoever.

# MANGROVE

CREEK BEACH

BUILDING - 1

## 1 BEDROOM

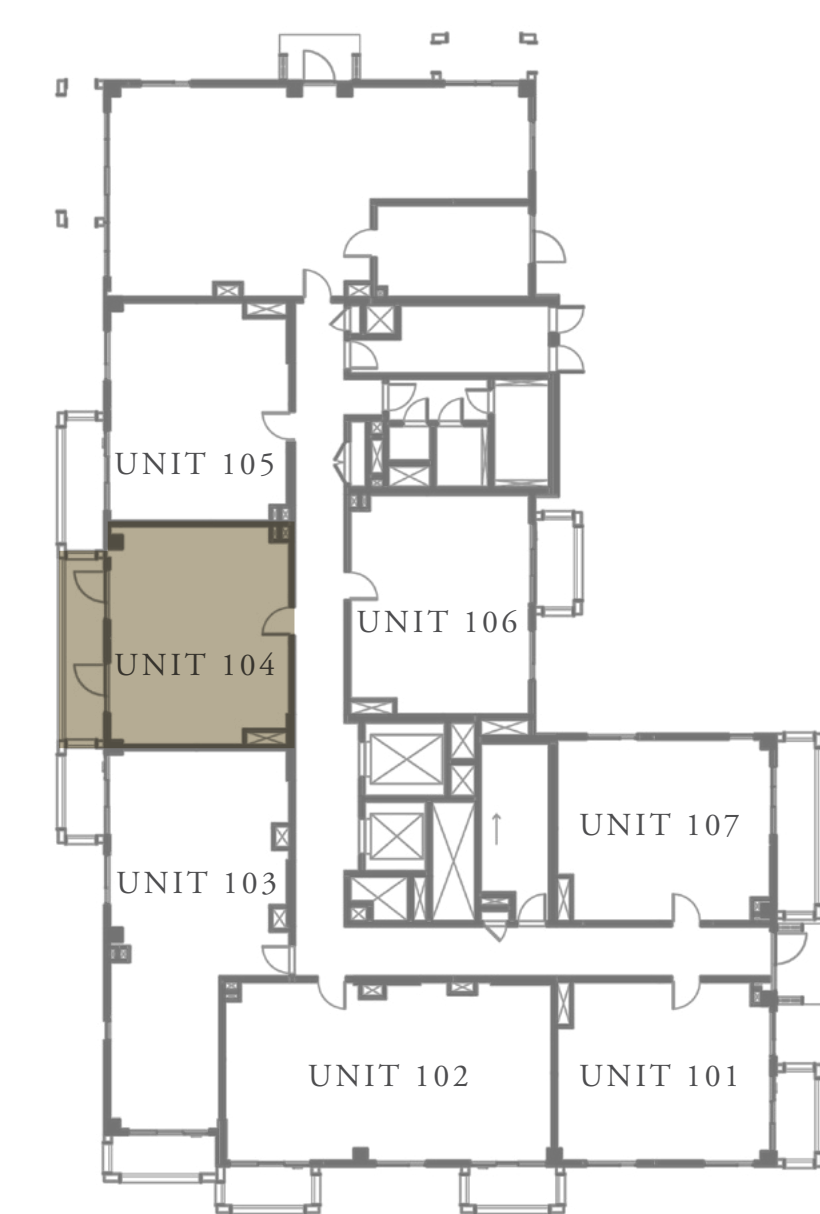
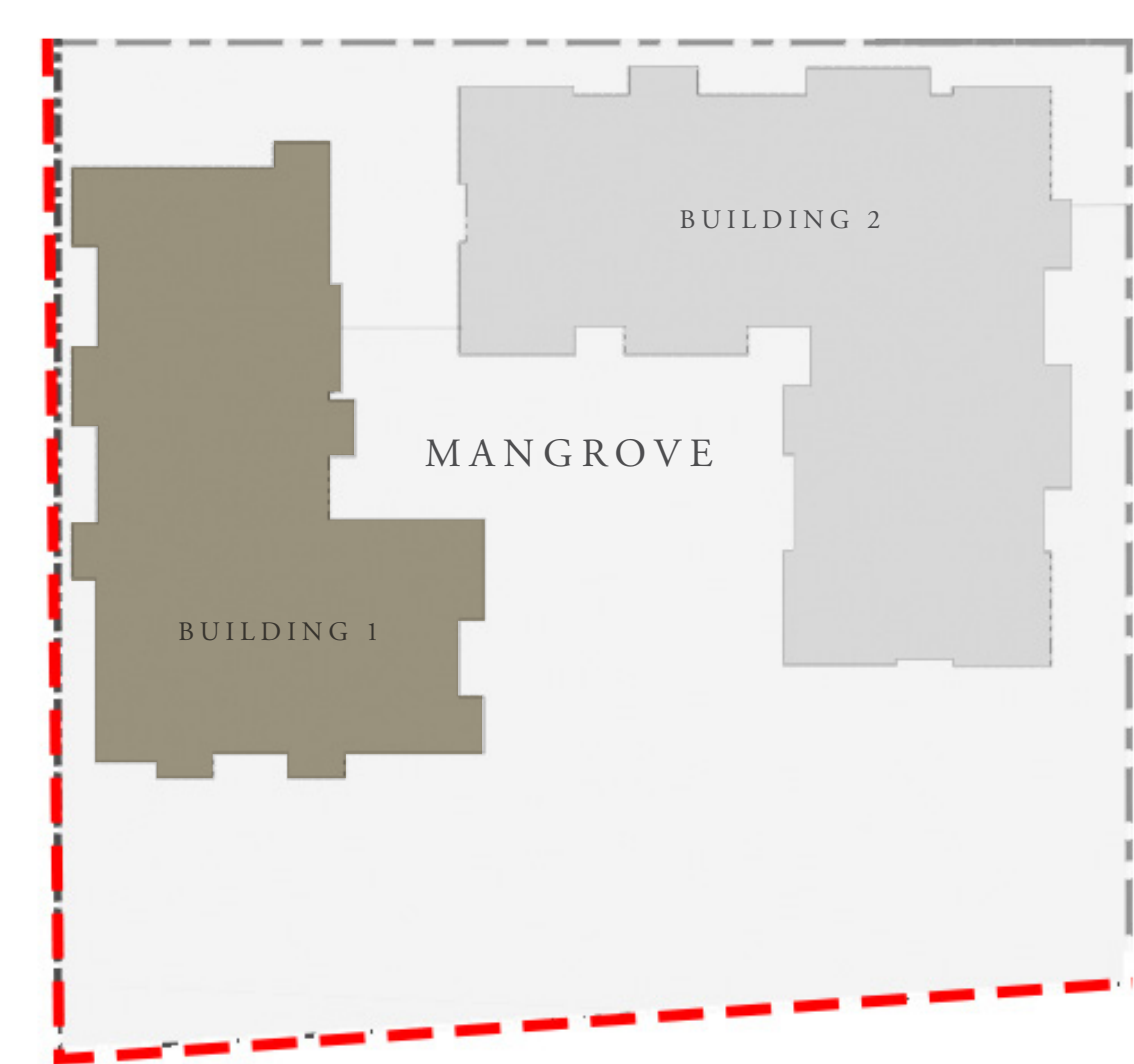
LEVEL 1

UNIT 104

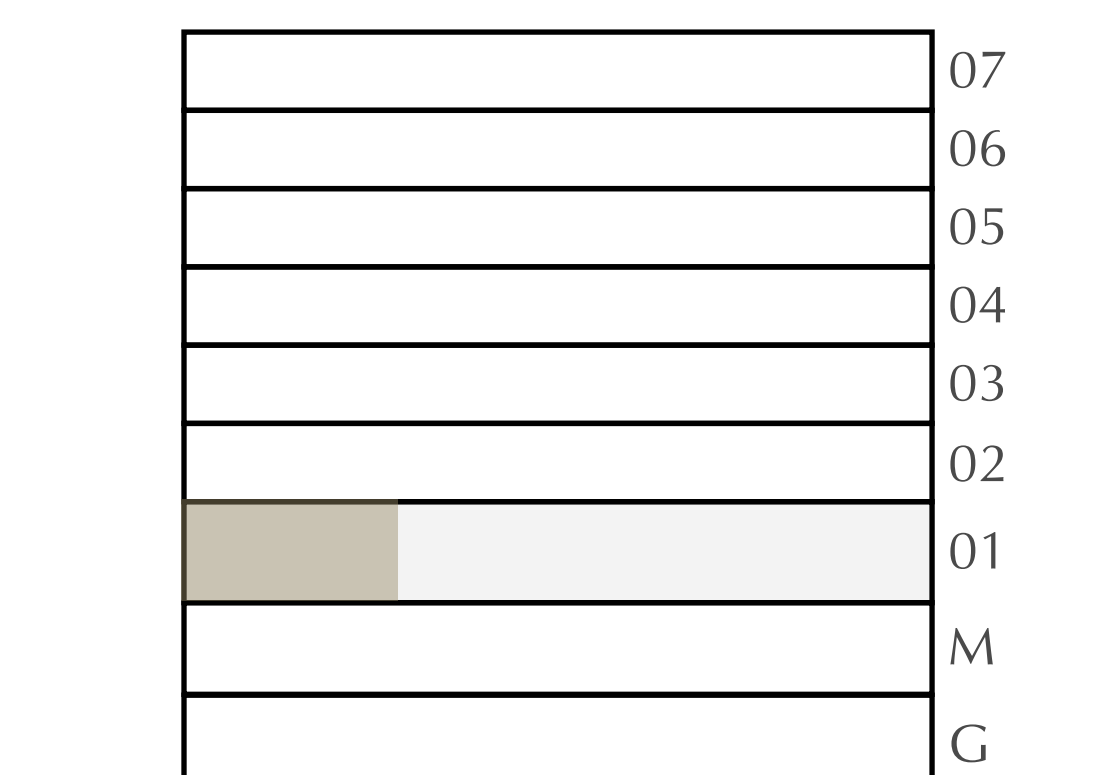
APARTMENT AREA	628.40 SQ.FT.	58.38 SQ.M.
BALCONY AREA	127.66 SQ.FT.	11.86 SQ.M.
TOTAL AREA	756.06 SQ.FT.	70.24 SQ.M.

CANAL

PARK



KEY PLAN



FLOOR PLAN 1. All dimensions are in imperial and metric, and measured from finish to finish excluding construction tolerances. 2. All materials, dimensions, and drawings are approximate only. 3. Information is subject to change without notice, at developer's absolute discretion. 4. Actual area may vary from the stated area. 5. Drawings not to scale. 6. All images used are for illustrative purposes only and do not represent the actual size, features, specifications, fittings, and furnishings. 7. The developer reserves the right to make revisions / alterations, at it's absolute discretion, without any liability whatsoever.



# MANGROVE

CREEK BEACH

BUILDING - 1

## 1 BEDROOM

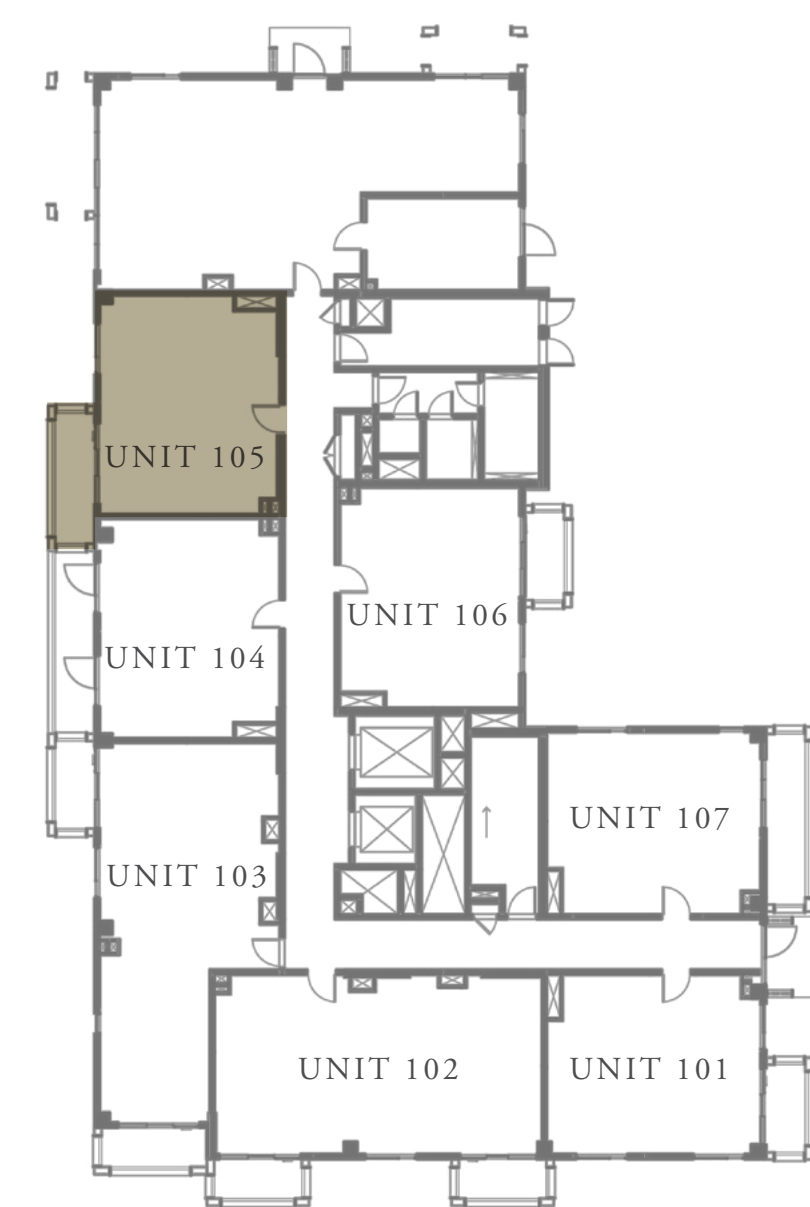
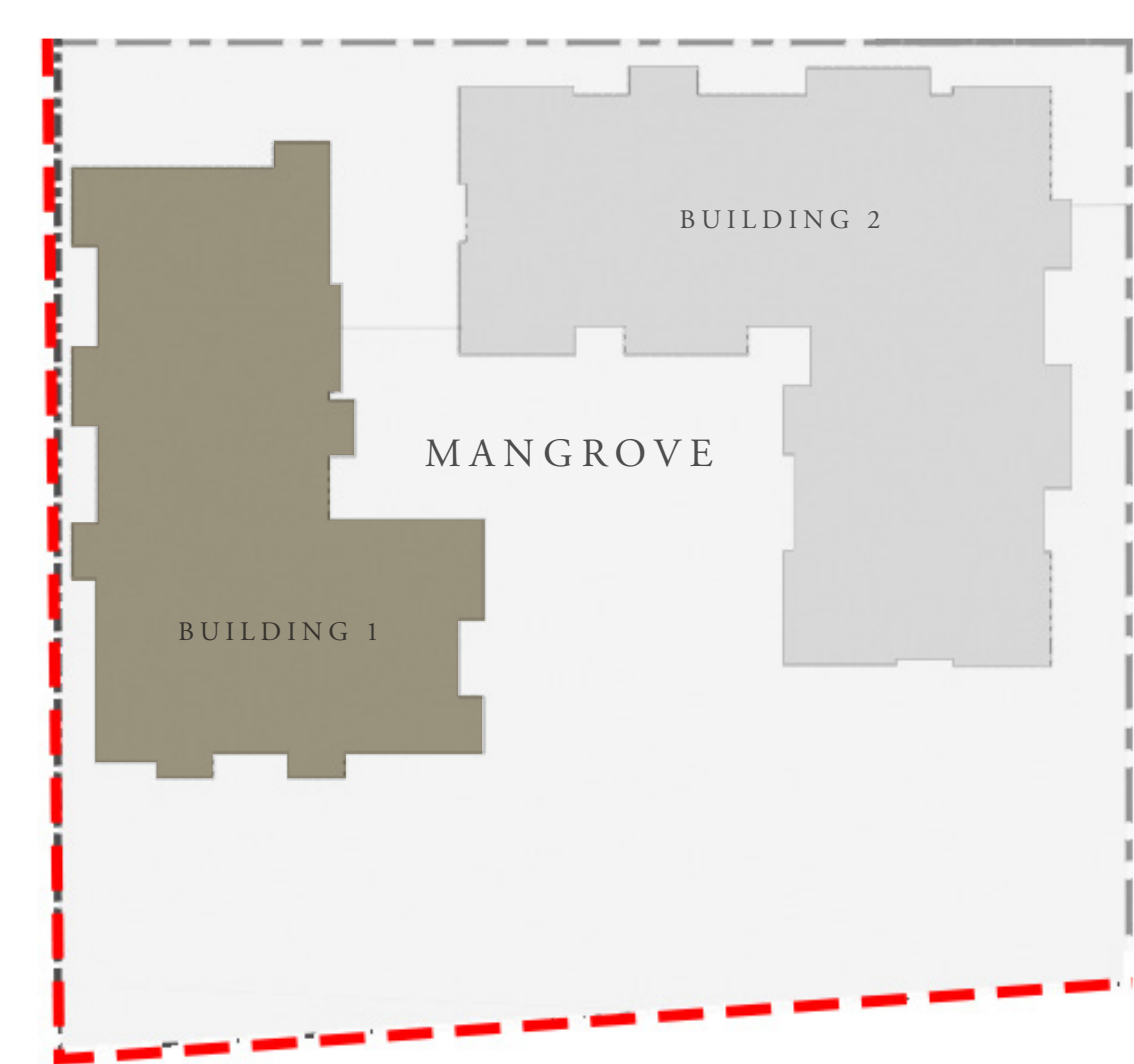
LEVEL 1

UNIT 105

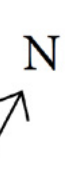
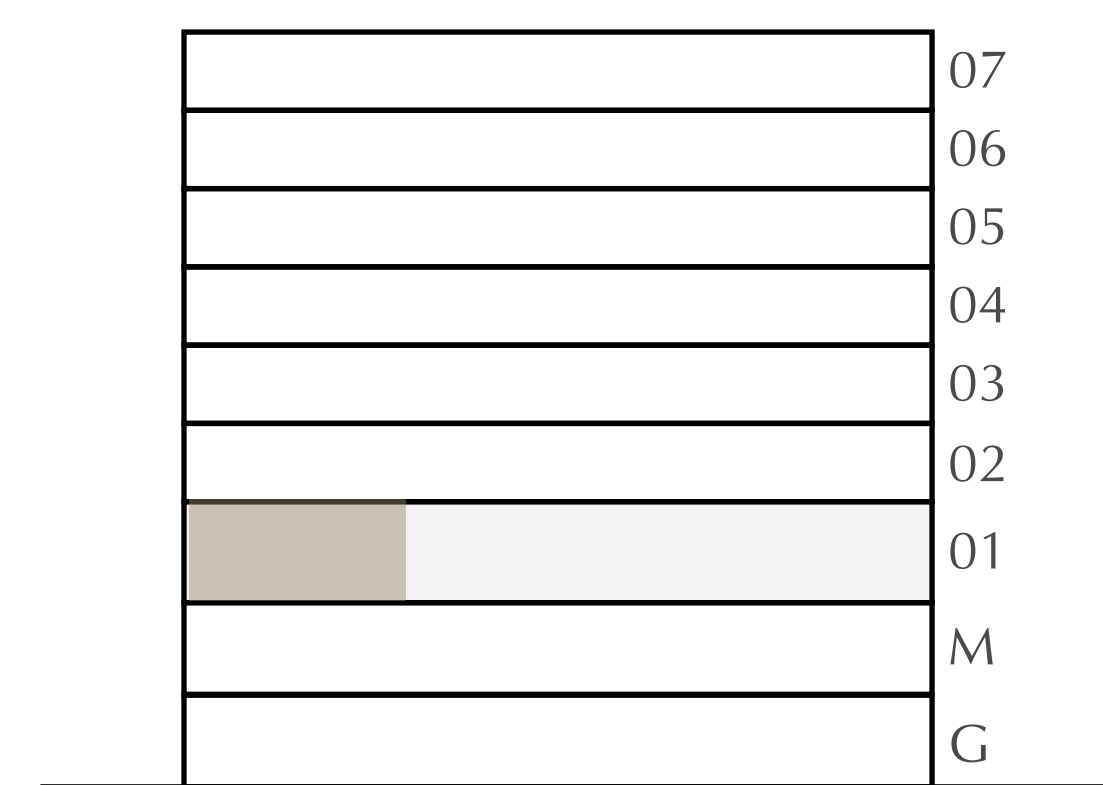
APARTMENT AREA	623.66 SQ.FT.	57.94 SQ.M.
BALCONY AREA	92.03 SQ.FT.	8.55 SQ.M.
TOTAL AREA	715.69 SQ.FT.	66.49 SQ.M.

CANAL

PARK



KEY PLAN



FLOOR PLAN 1. All dimensions are in imperial and metric, and measured from finish to finish excluding construction tolerances. 2. All materials, dimensions, and drawings are approximate only. 3. Information is subject to change without notice, at developer's absolute discretion. 4. Actual area may vary from the stated area. 5. Drawings not to scale. 6. All images used are for illustrative purposes only and do not represent the actual size, features, specifications, fittings, and furnishings. 7. The developer reserves the right to make revisions / alterations, at its absolute discretion, without any liability whatsoever.

# MANGROVE

CREEK BEACH

BUILDING - 1

## 1 BEDROOM

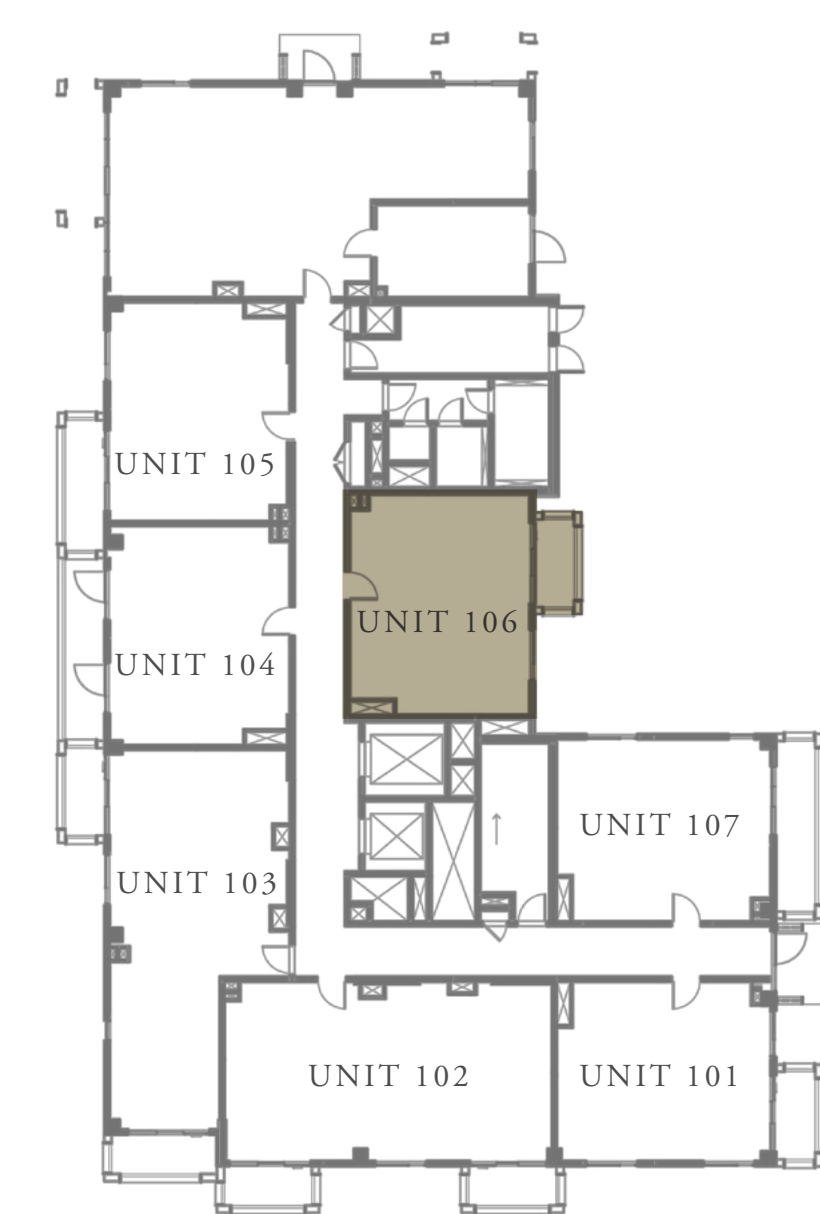
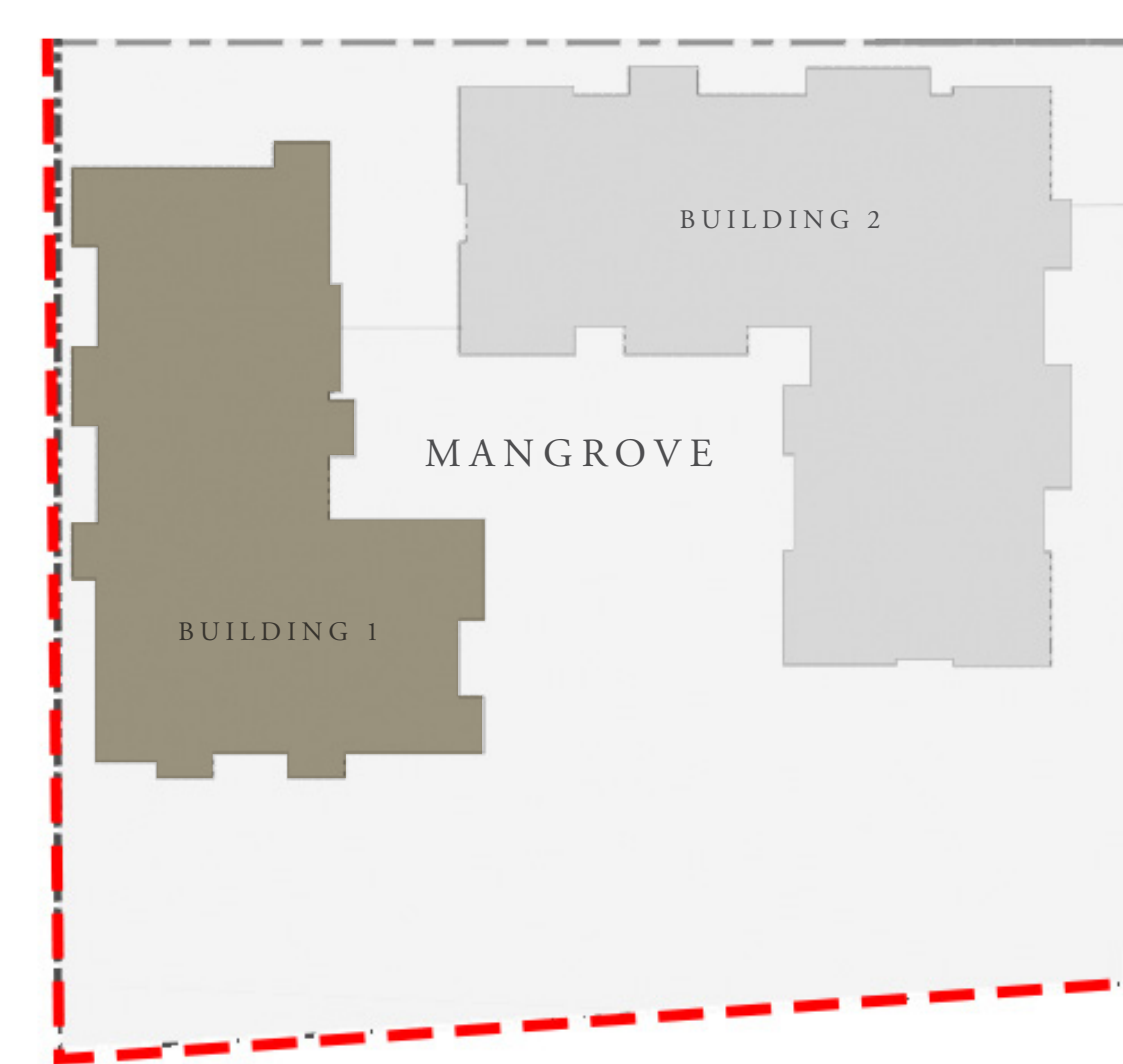
LEVEL 1

UNIT 106

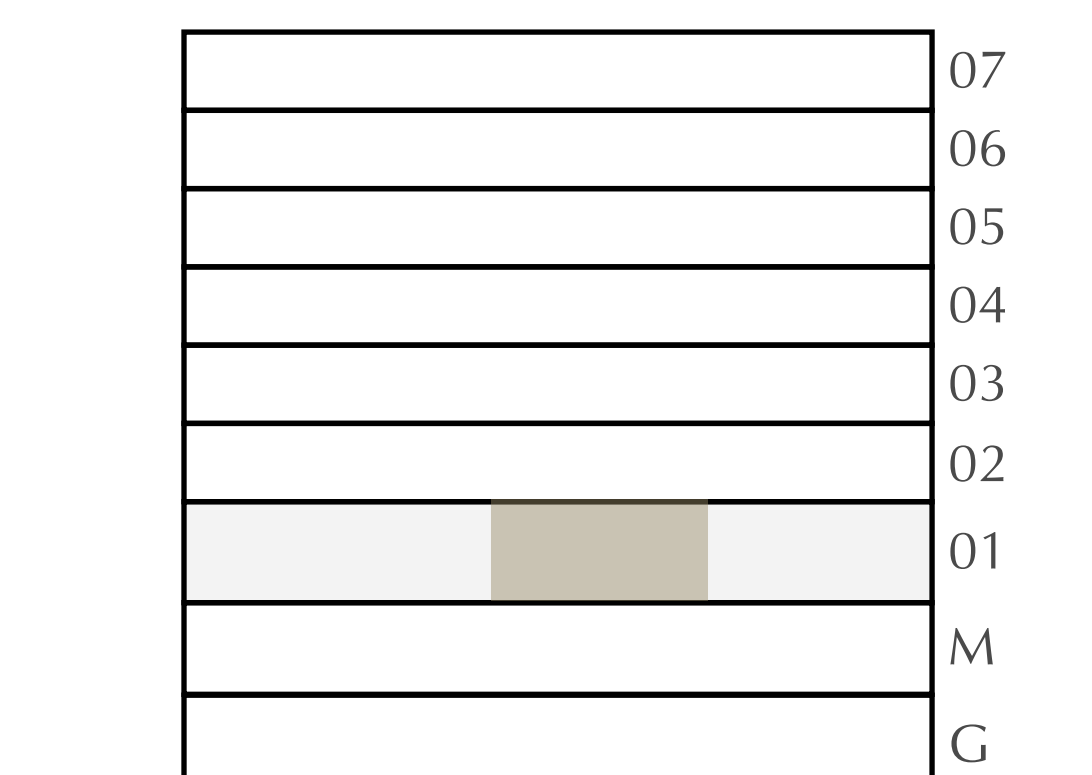
APARTMENT AREA	631.63 SQ.FT.	58.68 SQ.M.
BALCONY AREA	63.40 SQ.FT.	5.89 SQ.M.
TOTAL AREA	695.03 SQ.FT.	64.57 SQ.M.

CANAL

PARK



KEY PLAN



FLOOR PLAN 1. All dimensions are in imperial and metric, and measured from finish to finish excluding construction tolerances. 2. All materials, dimensions, and drawings are approximate only. 3. Information is subject to change without notice, at developer's absolute discretion. 4. Actual area may vary from the stated area. 5. Drawings not to scale. 6. All images used are for illustrative purposes only and do not represent the actual size, features, specifications, fittings, and furnishings. 7. The developer reserves the right to make revisions / alterations, at it's absolute discretion, without any liability whatsoever.

# MANGROVE

CREEK BEACH

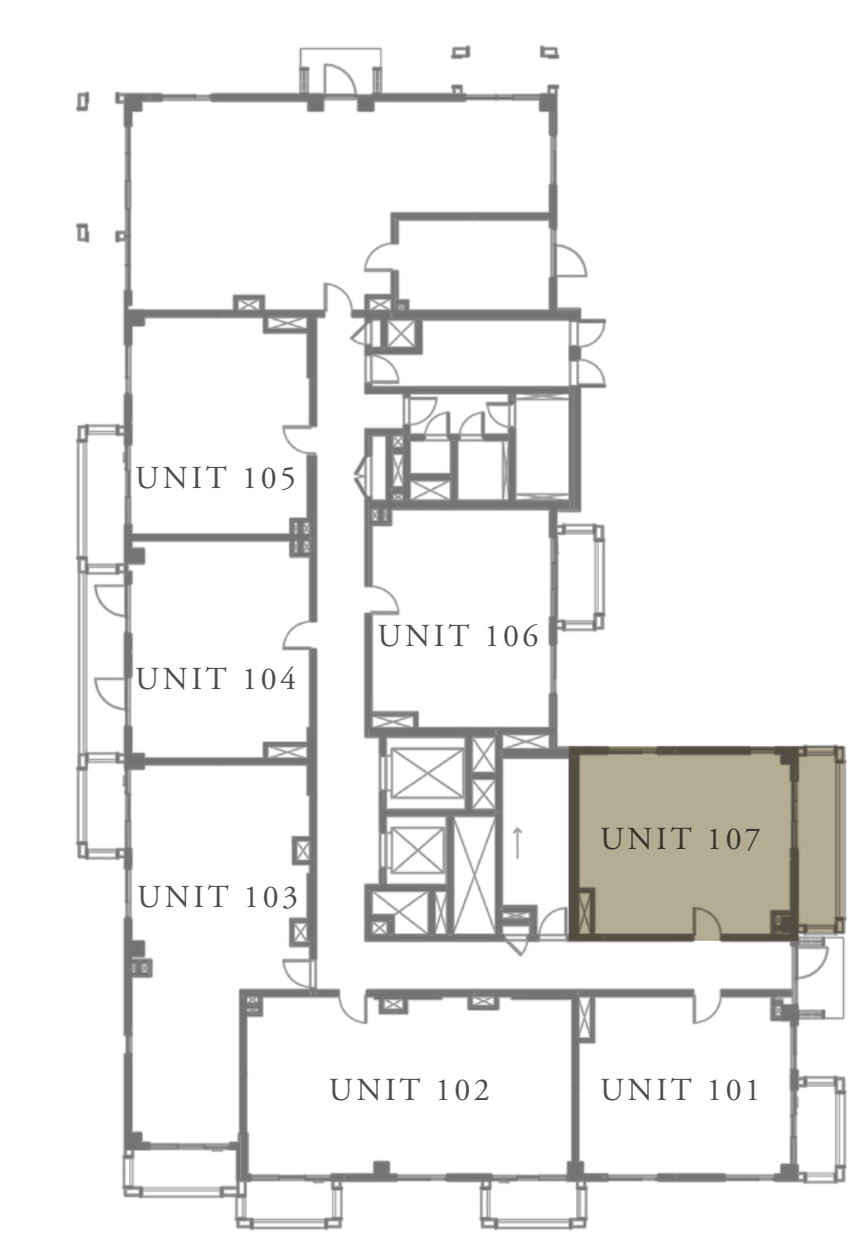
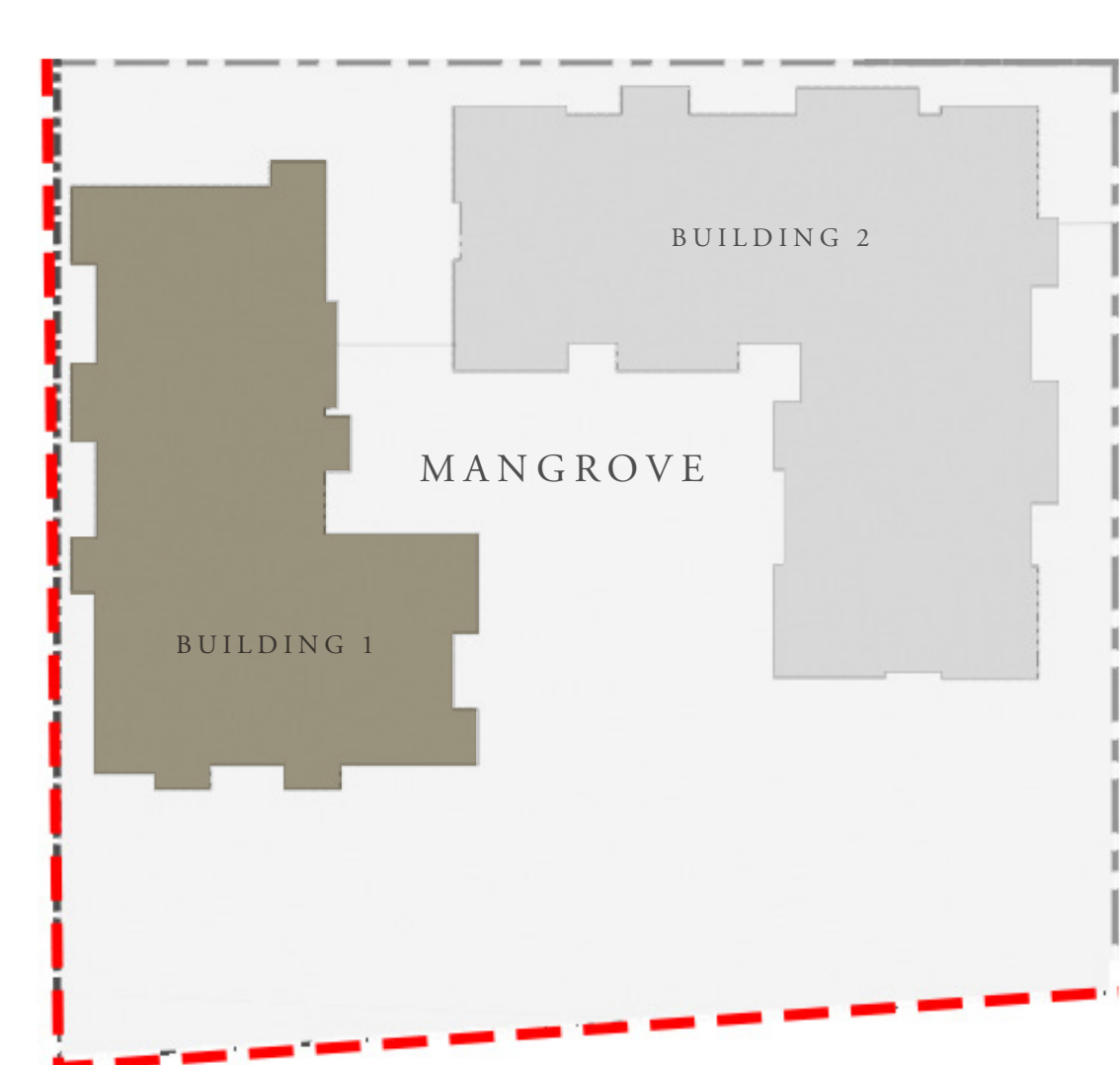
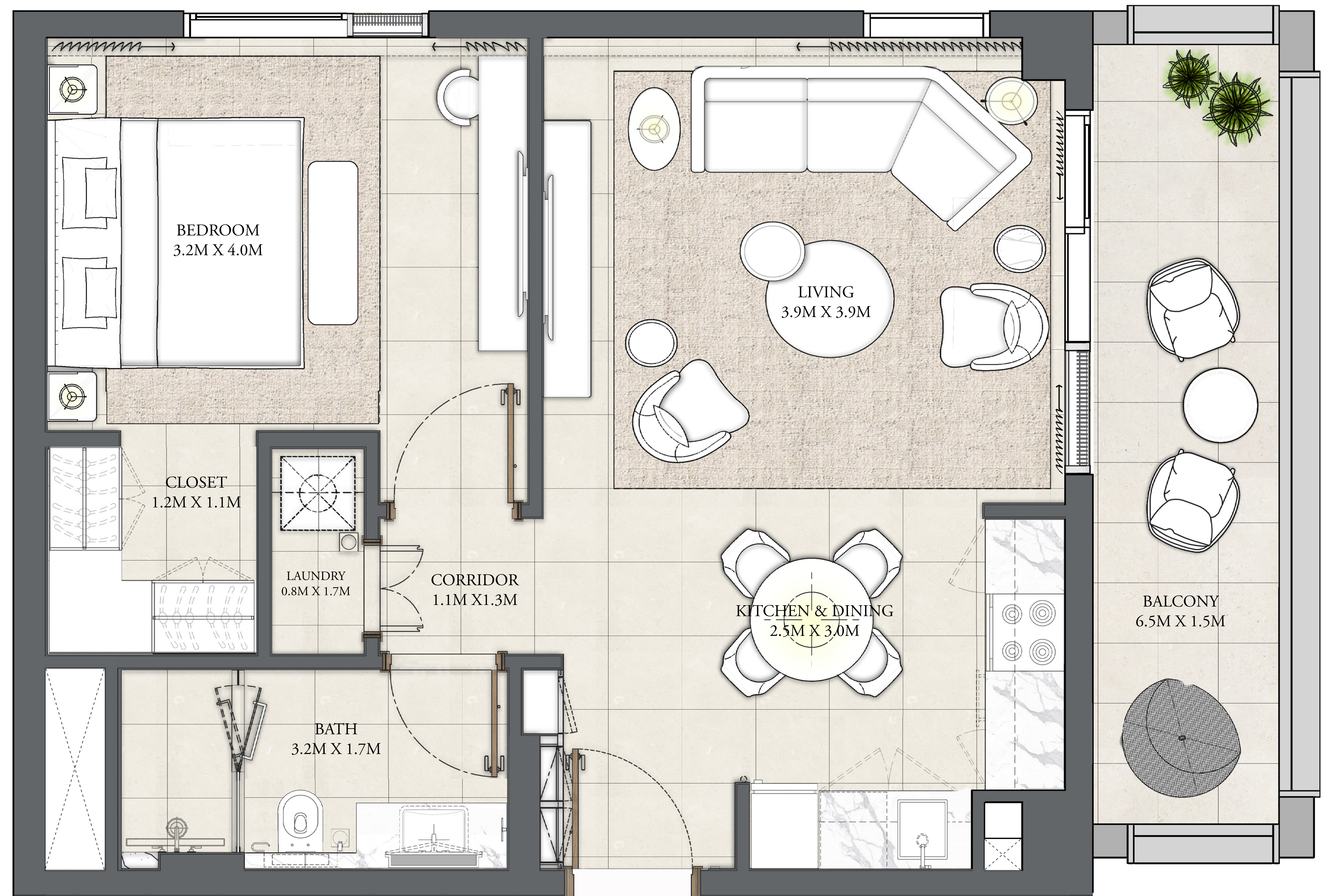
BUILDING - 1

## 1 BEDROOM

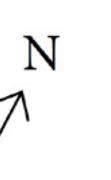
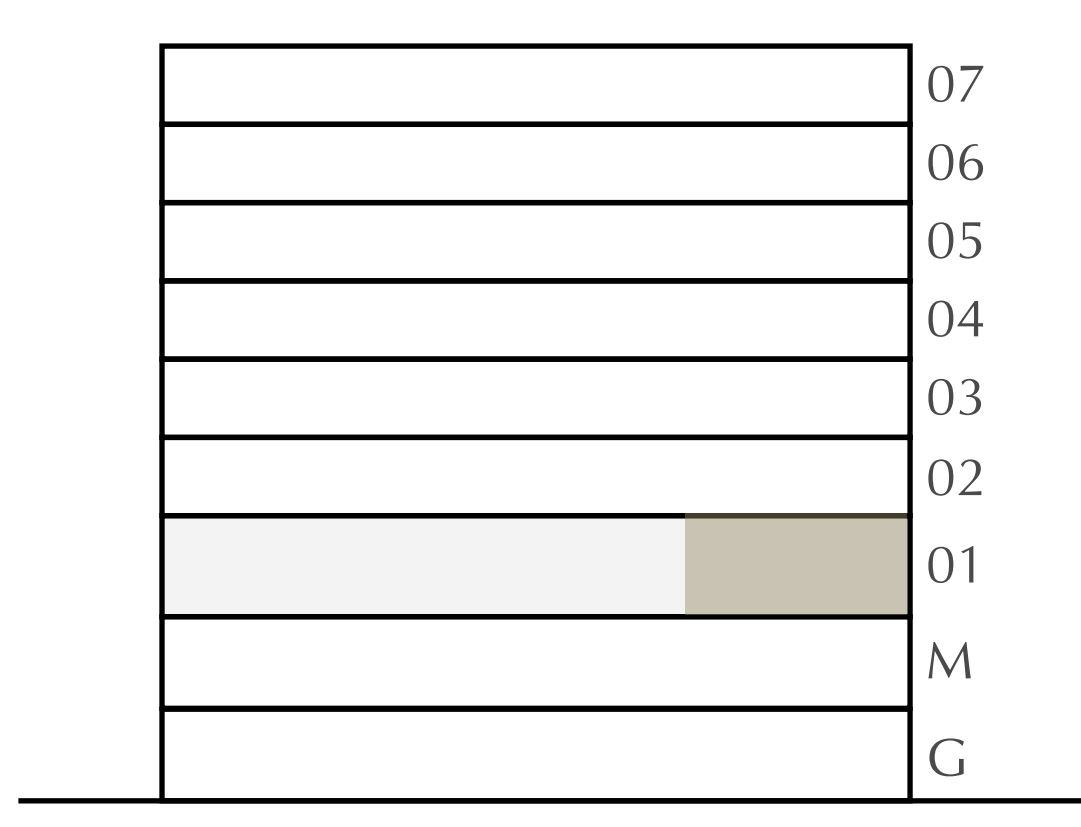
LEVEL 1

UNIT 107

APARTMENT AREA	619.36 SQ.FT.	57.54 SQ.M.
BALCONY AREA	119.16 SQ.FT.	11.07 SQ.M.
TOTAL AREA	738.52 SQ.FT.	68.61 SQ.M.



KEY PLAN



FLOOR PLAN 1. All dimensions are in imperial and metric, and measured from finish to finish excluding construction tolerances. 2. All materials, dimensions, and drawings are approximate only. 3. Information is subject to change without notice, at developer's absolute discretion. 4. Actual area may vary from the stated area. 5. Drawings not to scale. 6. All images used are for illustrative purposes only and do not represent the actual size, features, specifications, fittings, and furnishings. 7. The developer reserves the right to make revisions / alterations, at its absolute discretion, without any liability whatsoever.

# MANGROVE

CREEK BEACH

BUILDING - 1

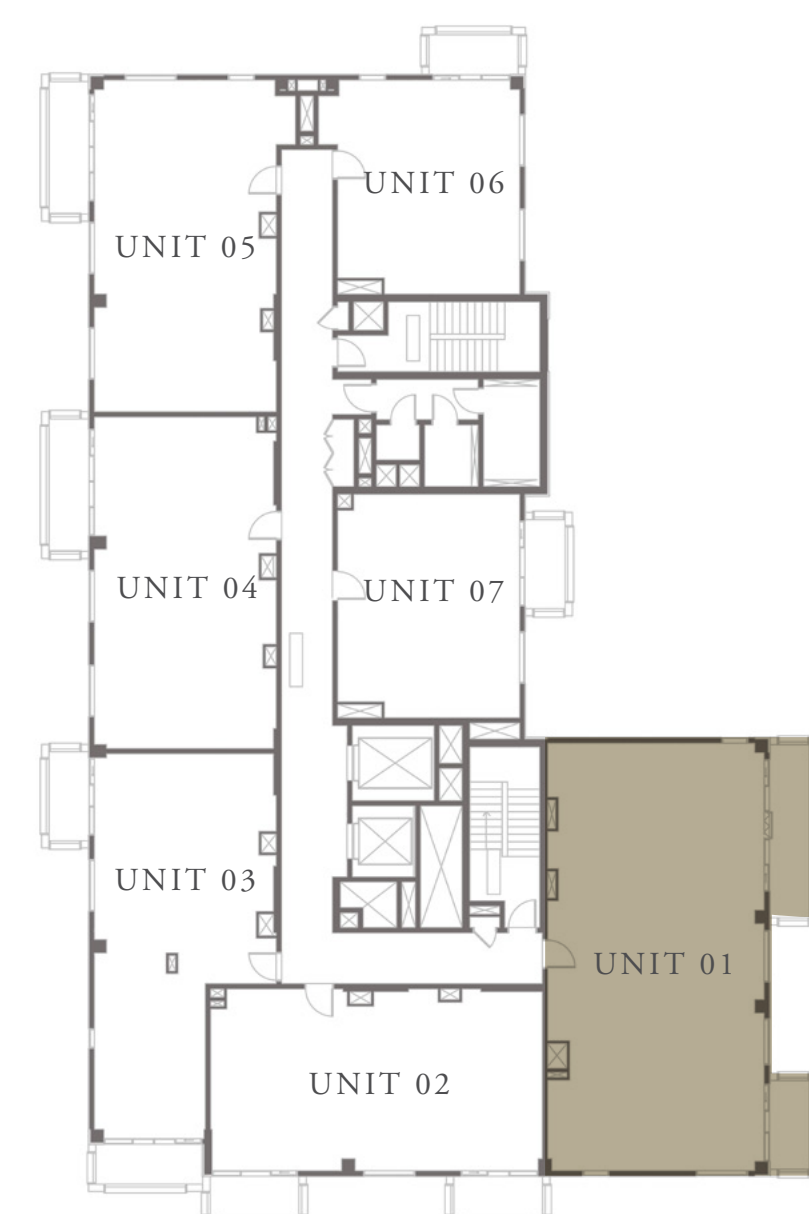
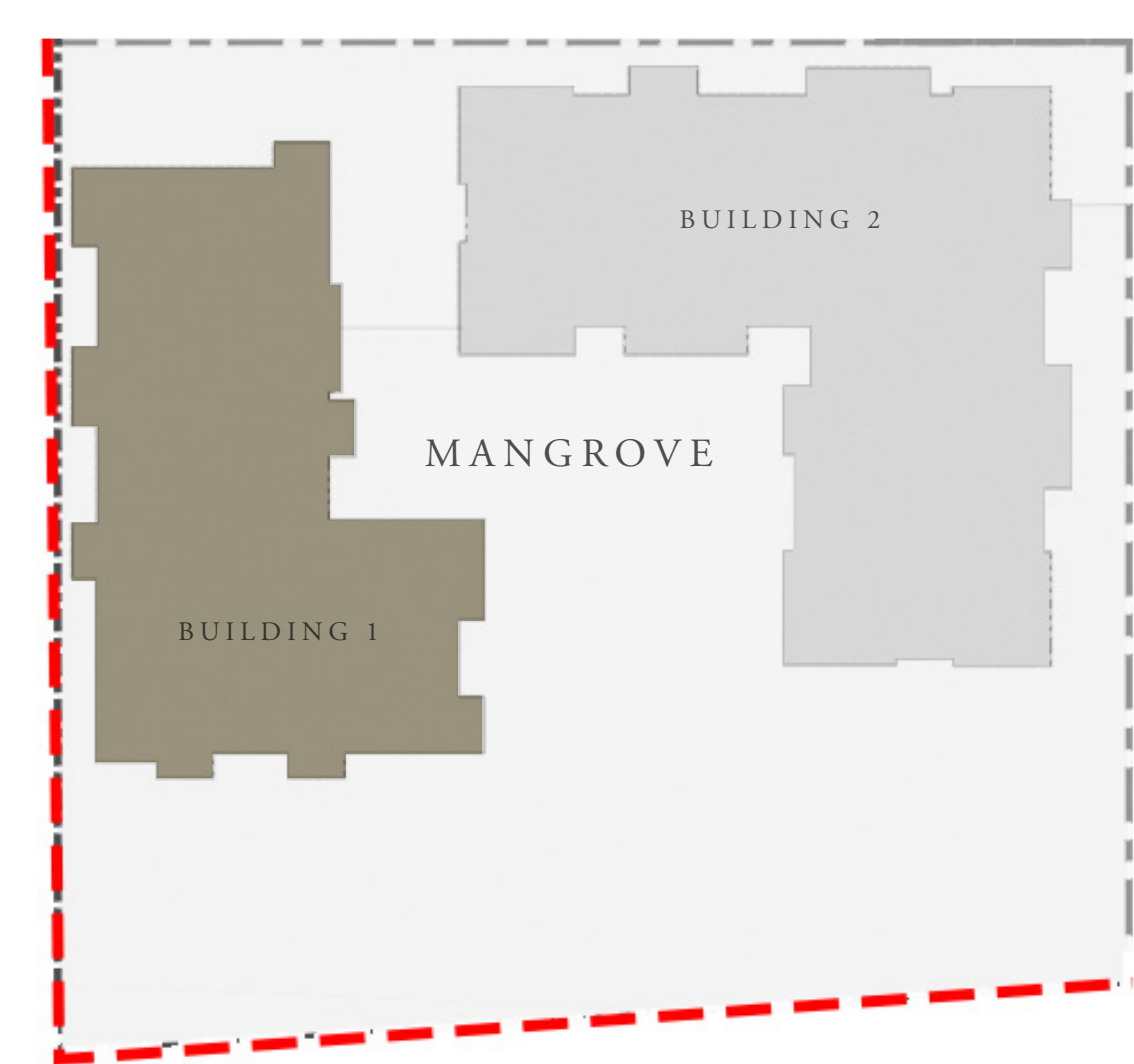
## 3 BEDROOM

LEVEL 2-7      UNIT 01

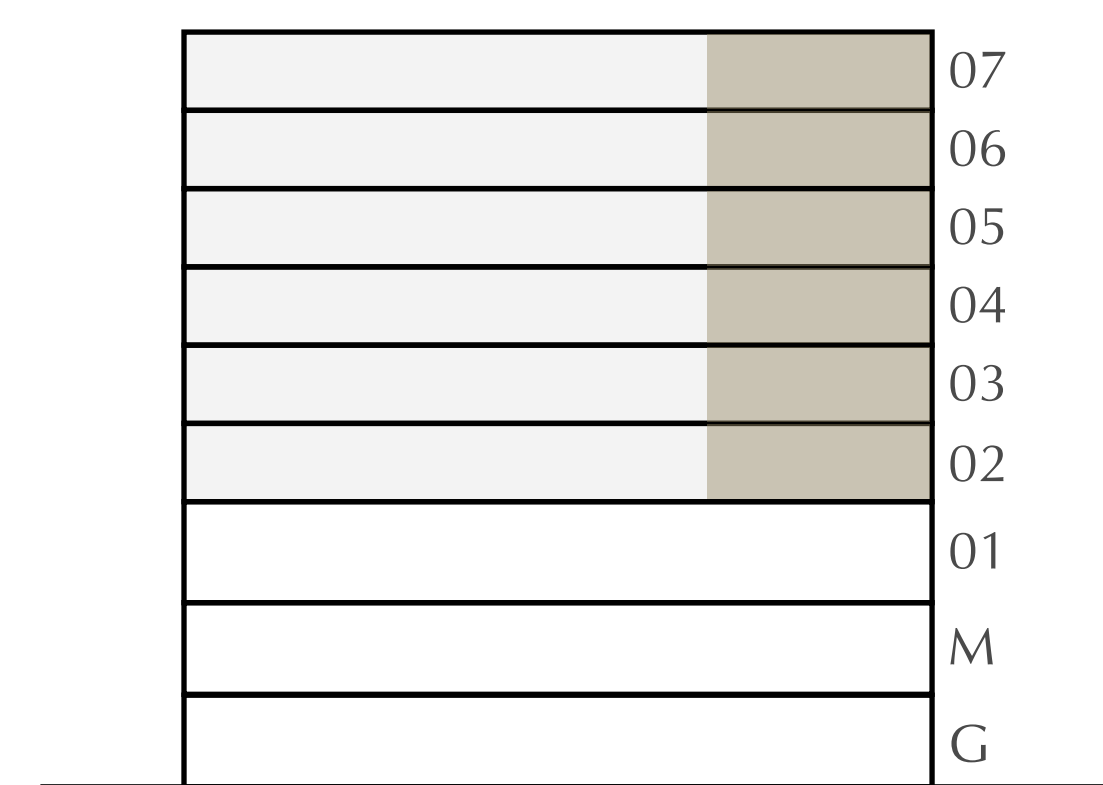
APARTMENT AREA	1431.06 SQ.FT.	132.95 SQ.M.
BALCONY AREA	181.69 SQ.FT.	16.88 SQ.M.
TOTAL AREA	1612.75 SQ.FT.	149.83 SQ.M.

CANAL

PARK



KEY PLAN



FLOOR PLAN 1. All dimensions are in imperial and metric, and measured from finish to finish excluding construction tolerances. 2. All materials, dimensions, and drawings are approximate only. 3. Information is subject to change without notice, at developer's absolute discretion. 4. Actual area may vary from the stated area. 5. Drawings not to scale. 6. All images used are for illustrative purposes only and do not represent the actual size, features, specifications, fittings, and furnishings. 7. The developer reserves the right to make revisions / alterations, at it's absolute discretion, without any liability whatsoever.

# MANGROVE

CREEK BEACH

BUILDING - 1

## 2 BEDROOM

LEVEL 2-7

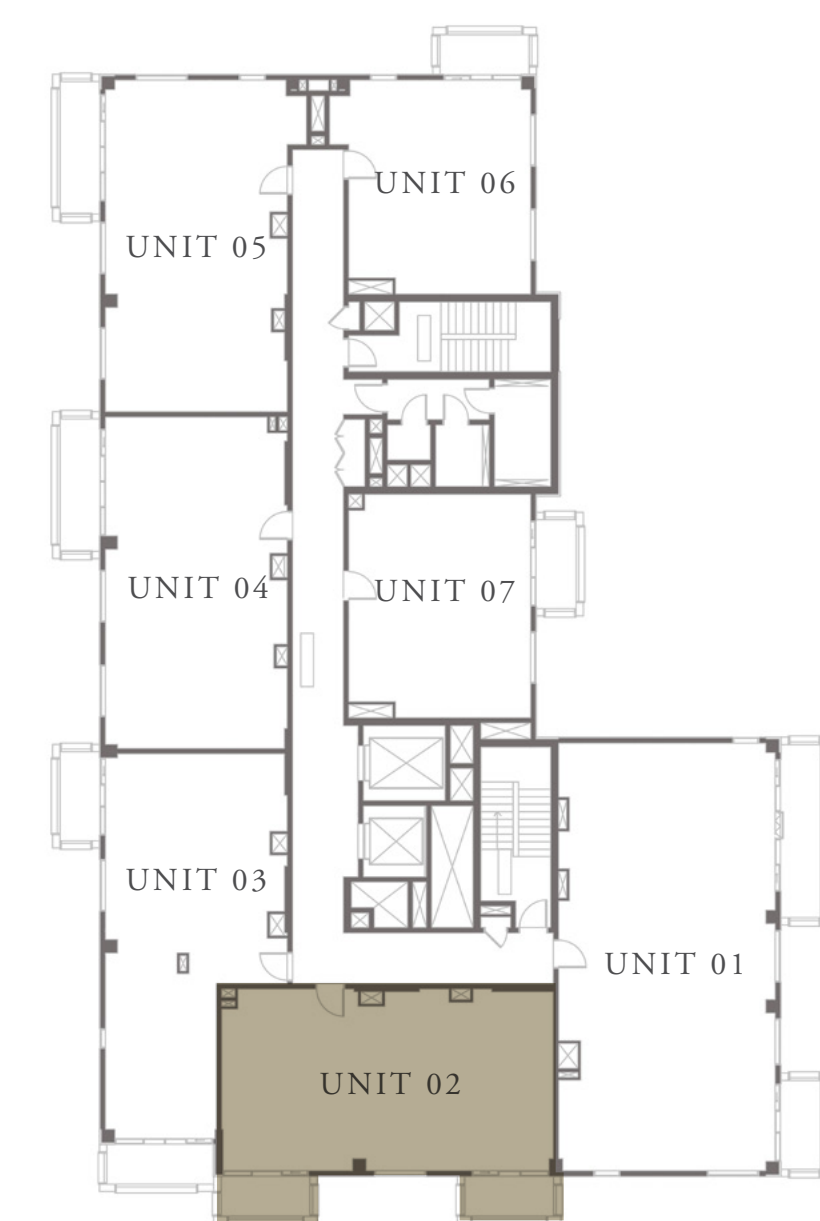
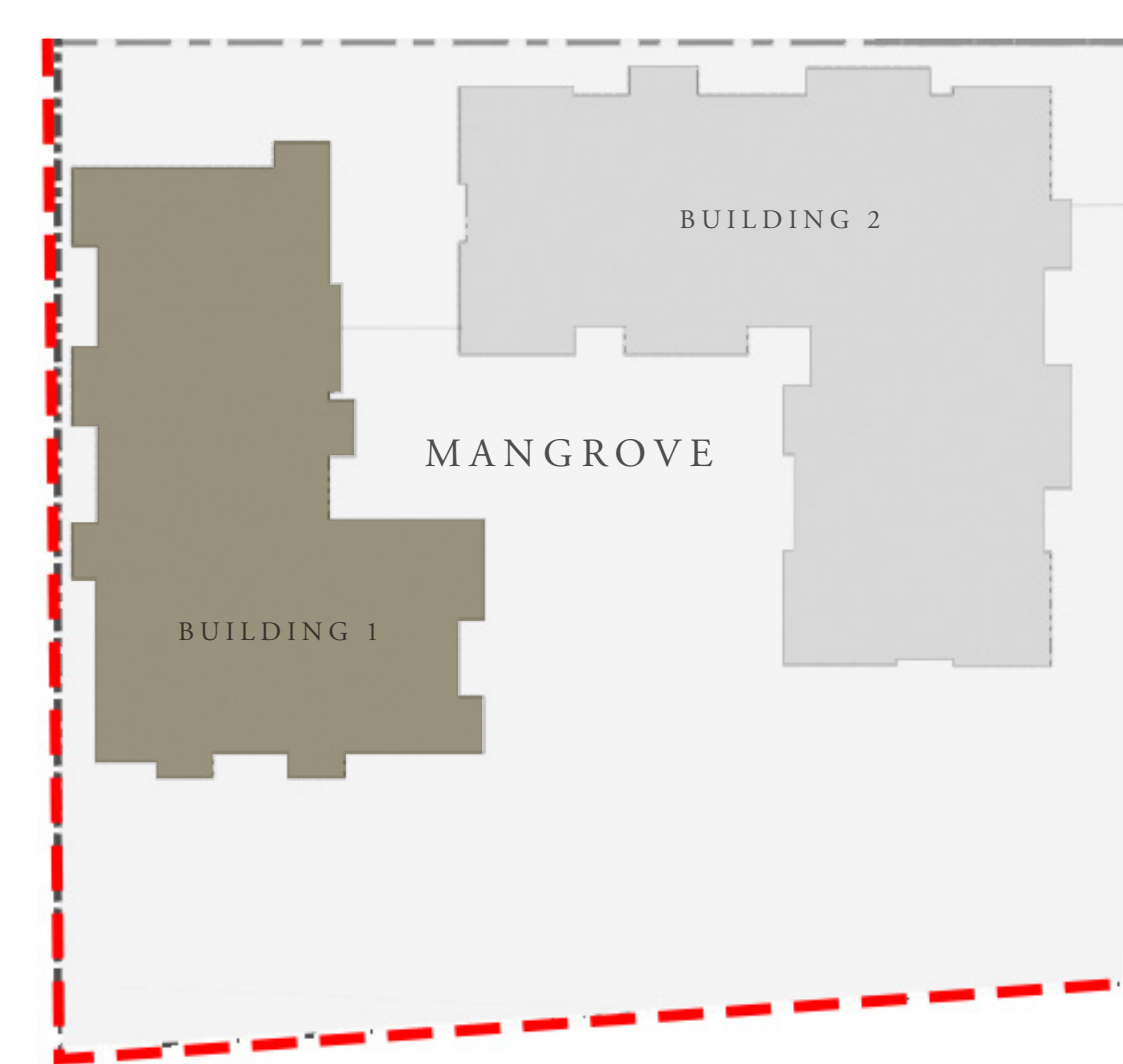
UNIT 02

APARTMENT AREA	929.36 SQ.FT.	86.34 SQ.M.
BALCONY AREA	126.80 SQ.FT.	11.78 SQ.M.
TOTAL AREA	1056.16 SQ.FT.	98.12 SQ.M.

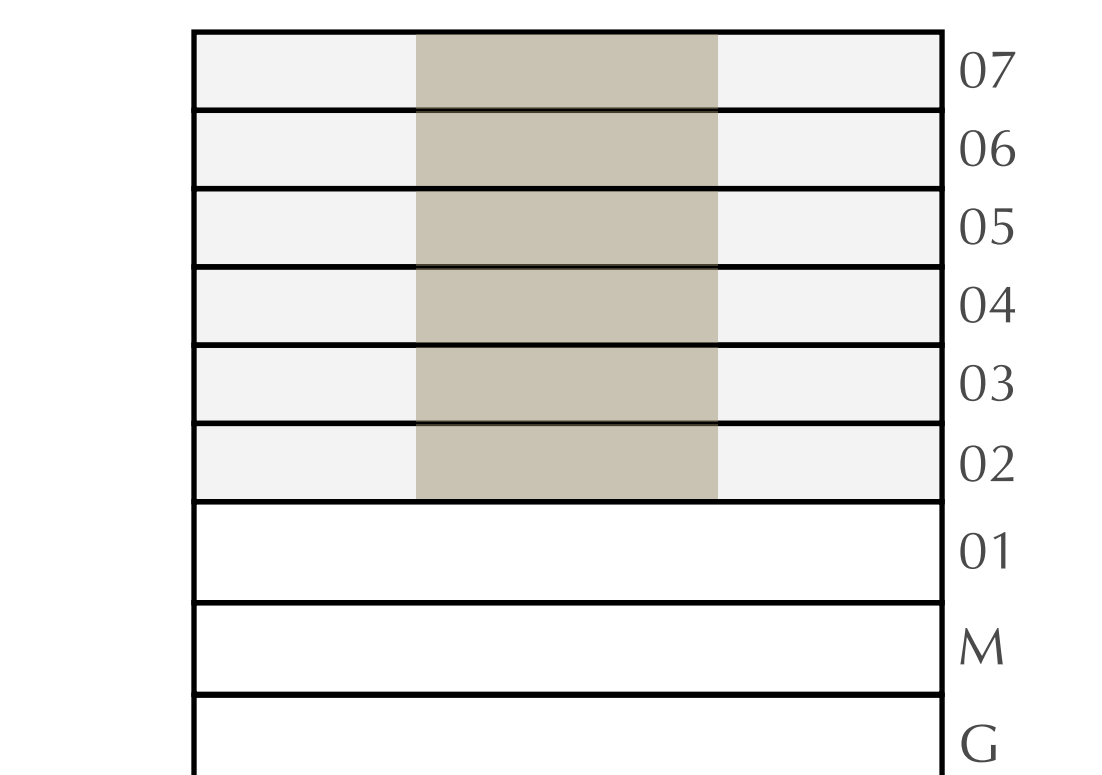


CANAL

PARK



KEY PLAN



FLOOR PLAN 1. All dimensions are in imperial and metric, and measured from finish to finish excluding construction tolerances. 2. All materials, dimensions, and drawings are approximate only. 3. Information is subject to change without notice, at developer's absolute discretion. 4. Actual area may vary from the stated area. 5. Drawings not to scale. 6. All images used are for illustrative purposes only and do not represent the actual size, features, specifications, fittings, and furnishings. 7. The developer reserves the right to make revisions / alterations, at it's absolute discretion, without any liability whatsoever.

# MANGROVE

CREEK BEACH

BUILDING - 1

## 2 BEDROOM

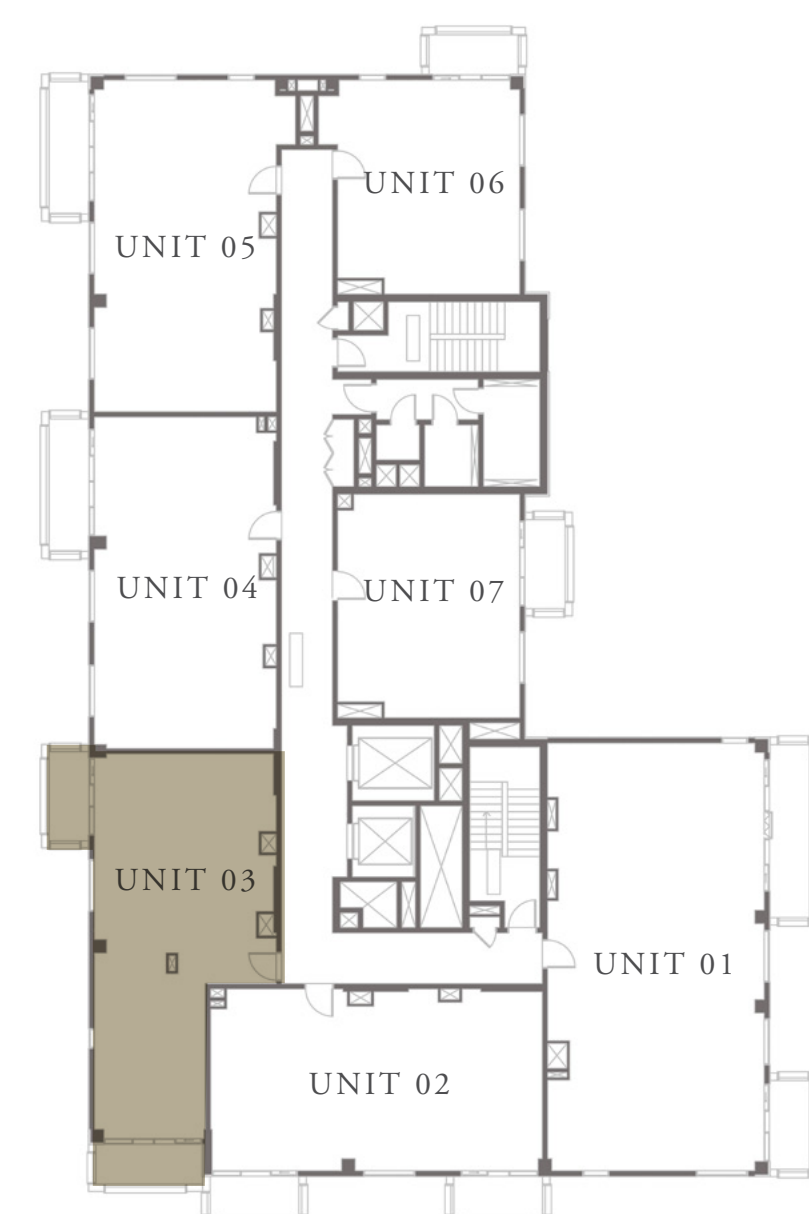
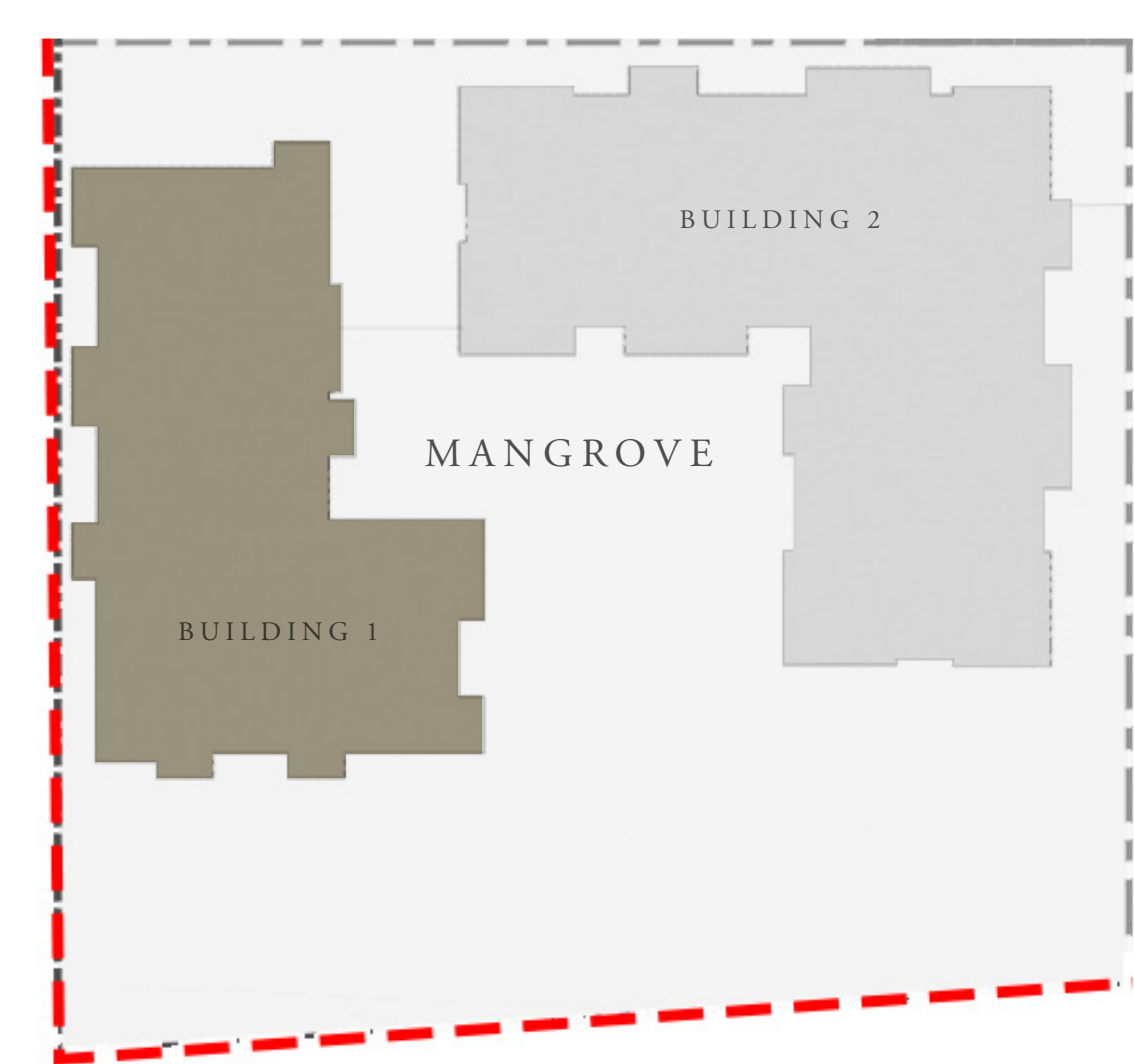
LEVEL 2-7

UNIT 03

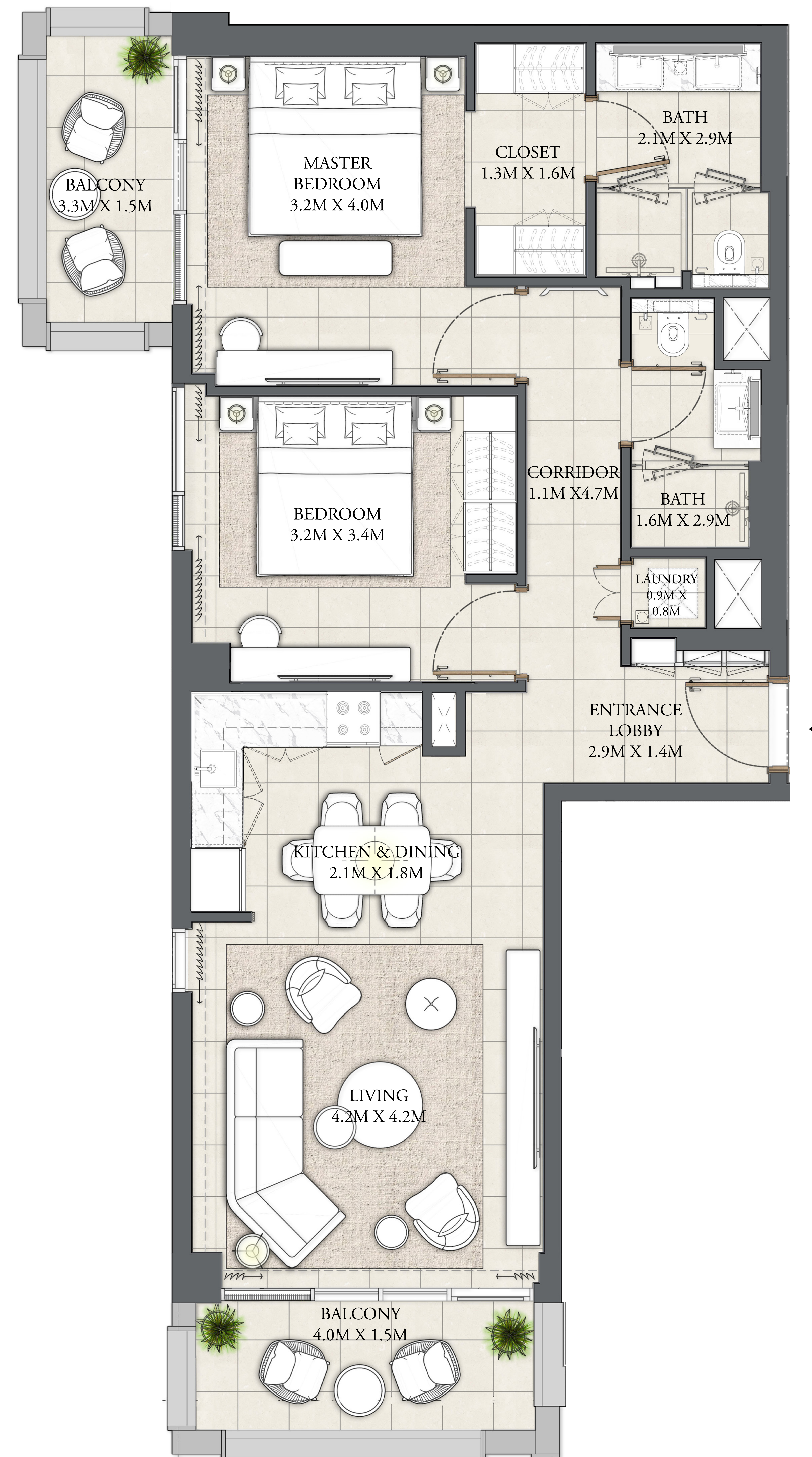
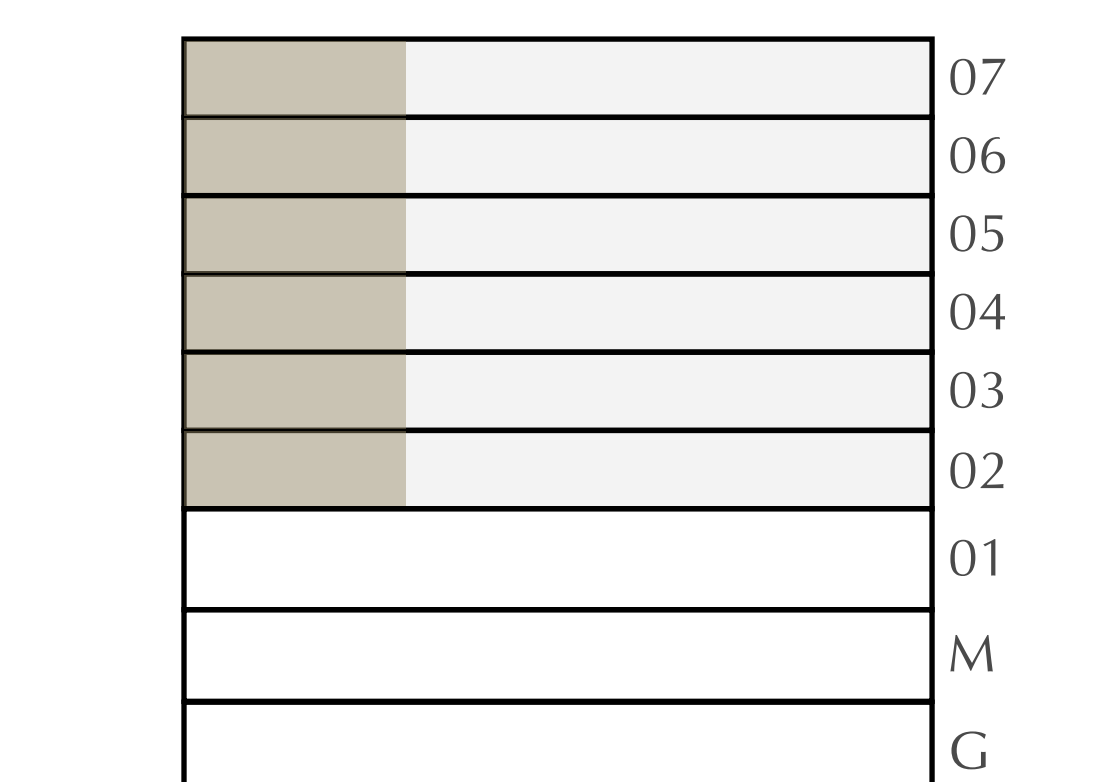
APARTMENT AREA	915.79 SQ.FT.	85.08 SQ.M.
BALCONY AREA	141.65 SQ.FT.	13.16 SQ.M.
TOTAL AREA	1057.44 SQ.FT.	98.24 SQ.M.

CANAL

PARK



KEY PLAN



FLOOR PLAN 1. All dimensions are in imperial and metric, and measured from finish to finish excluding construction tolerances. 2. All materials, dimensions, and drawings are approximate only. 3. Information is subject to change without notice, at developer's absolute discretion. 4. Actual area may vary from the stated area. 5. Drawings not to scale. 6. All images used are for illustrative purposes only and do not represent the actual size, features, specifications, fittings, and furnishings. 7. The developer reserves the right to make revisions / alterations, at it's absolute discretion, without any liability whatsoever.

# MANGROVE

CREEK BEACH

BUILDING - 1

## 2 BEDROOM

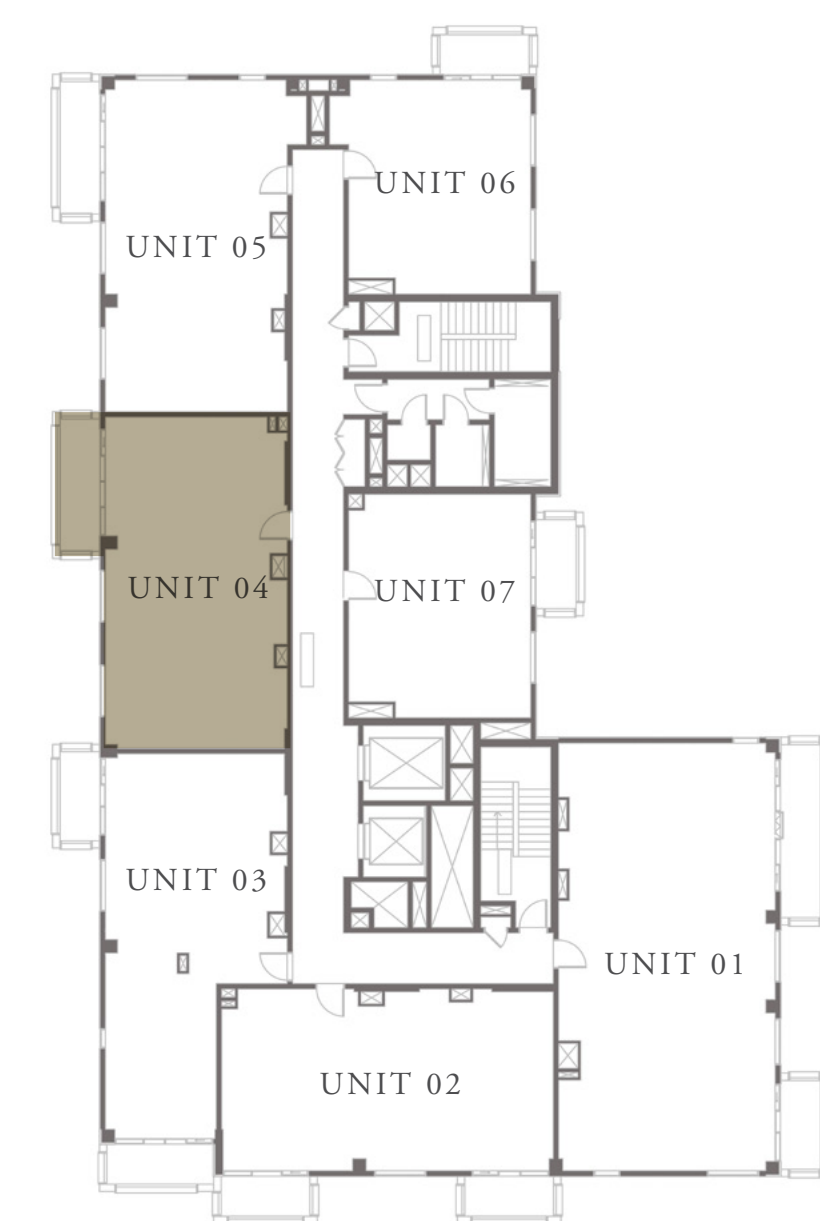
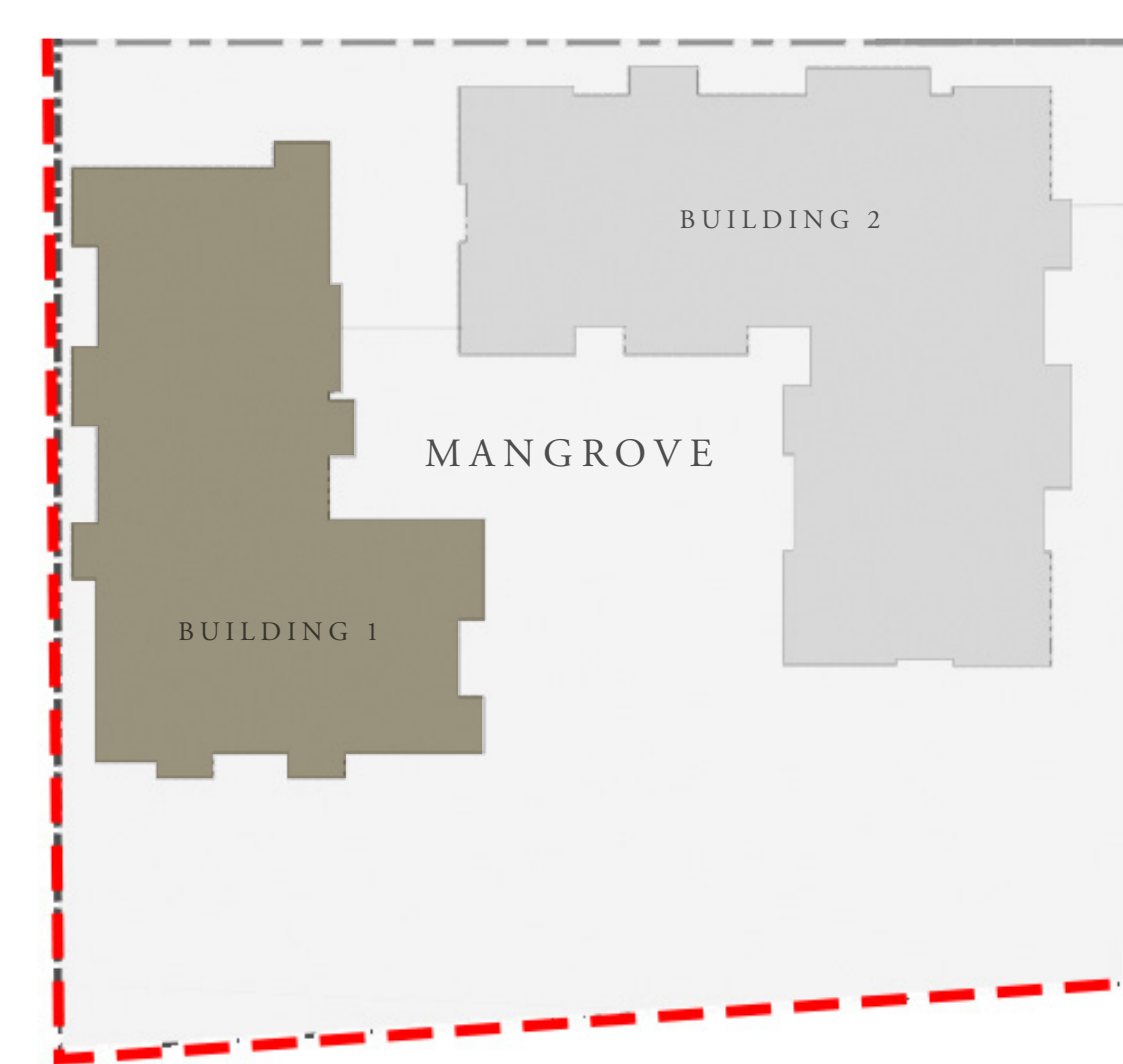
LEVEL 2-7

UNIT 04

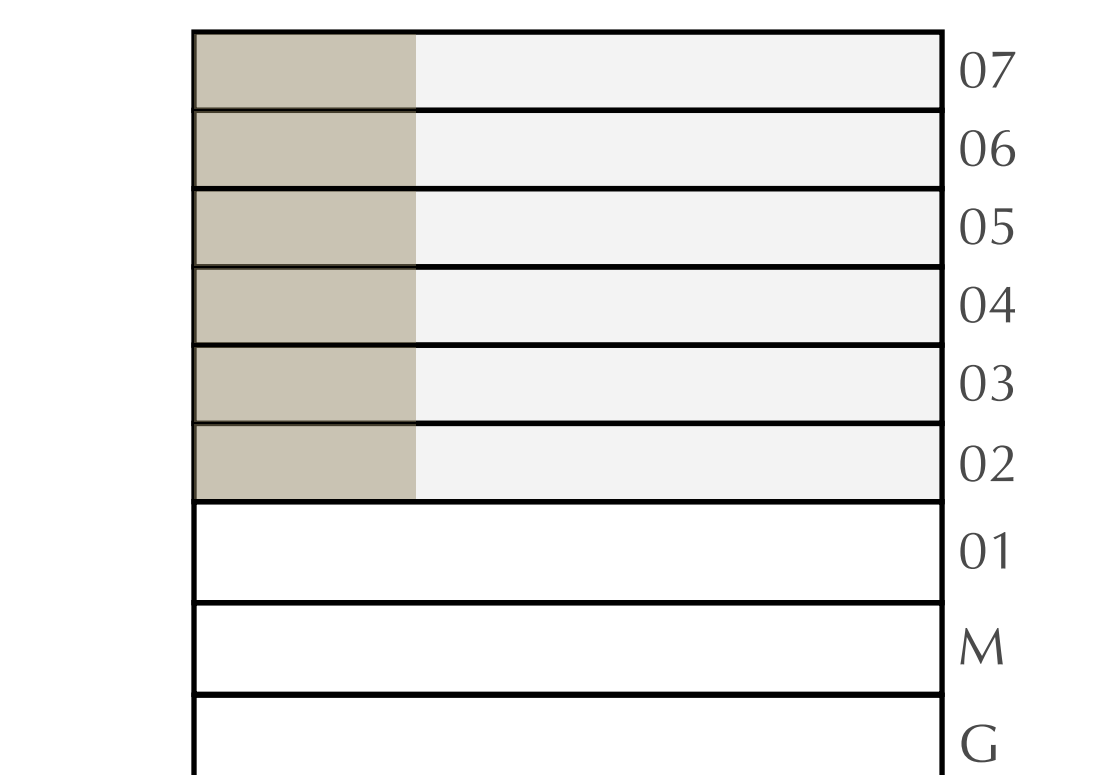
APARTMENT AREA	931.83 SQ.FT.	86.57 SQ.M.
BALCONY AREA	93.00 SQ.FT.	8.64 SQ.M.
TOTAL AREA	1024.83 SQ.FT.	95.21 SQ.M.

CANAL

PARK



KEY PLAN



FLOOR PLAN 1. All dimensions are in imperial and metric, and measured from finish to finish excluding construction tolerances. 2. All materials, dimensions, and drawings are approximate only. 3. Information is subject to change without notice, at developer's absolute discretion. 4. Actual area may vary from the stated area. 5. Drawings not to scale. 6. All images used are for illustrative purposes only and do not represent the actual size, features, specifications, fittings, and furnishings. 7. The developer reserves the right to make revisions / alterations, at its absolute discretion, without any liability whatsoever.

# MANGROVE

CREEK BEACH

BUILDING - 1

## 2 BEDROOM

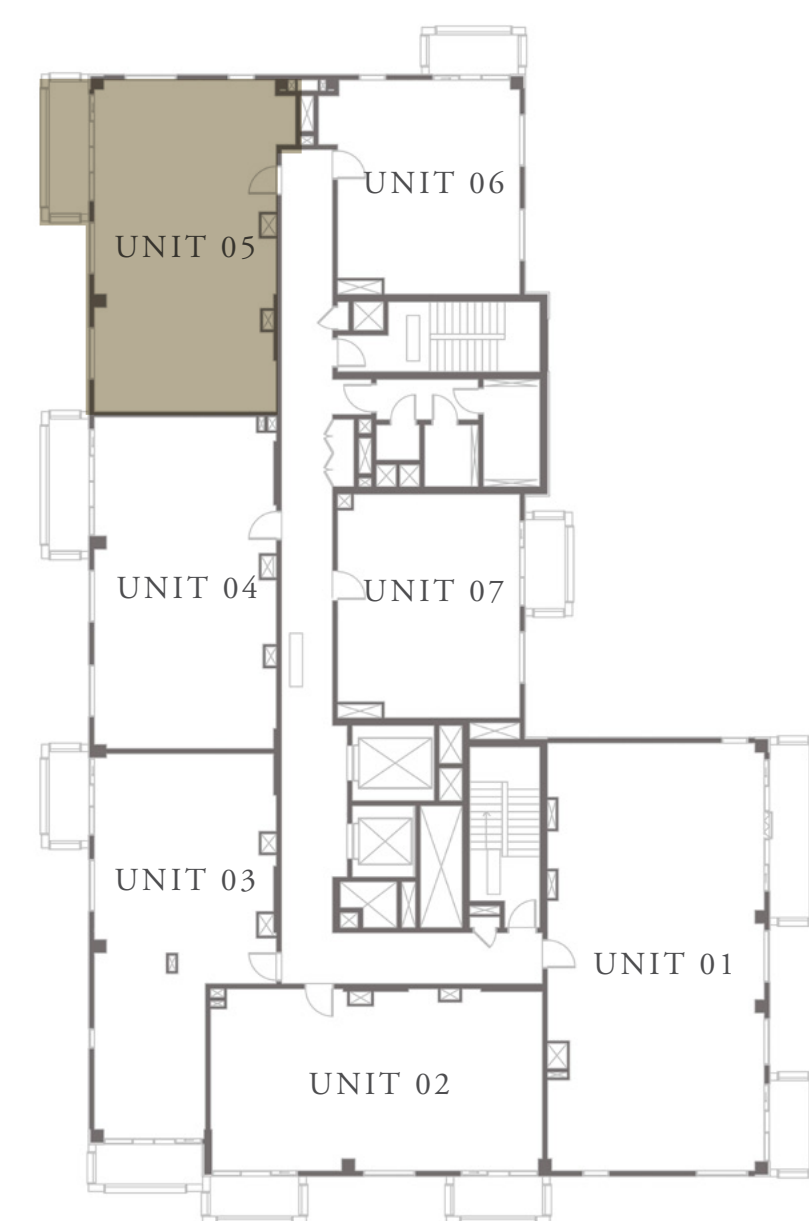
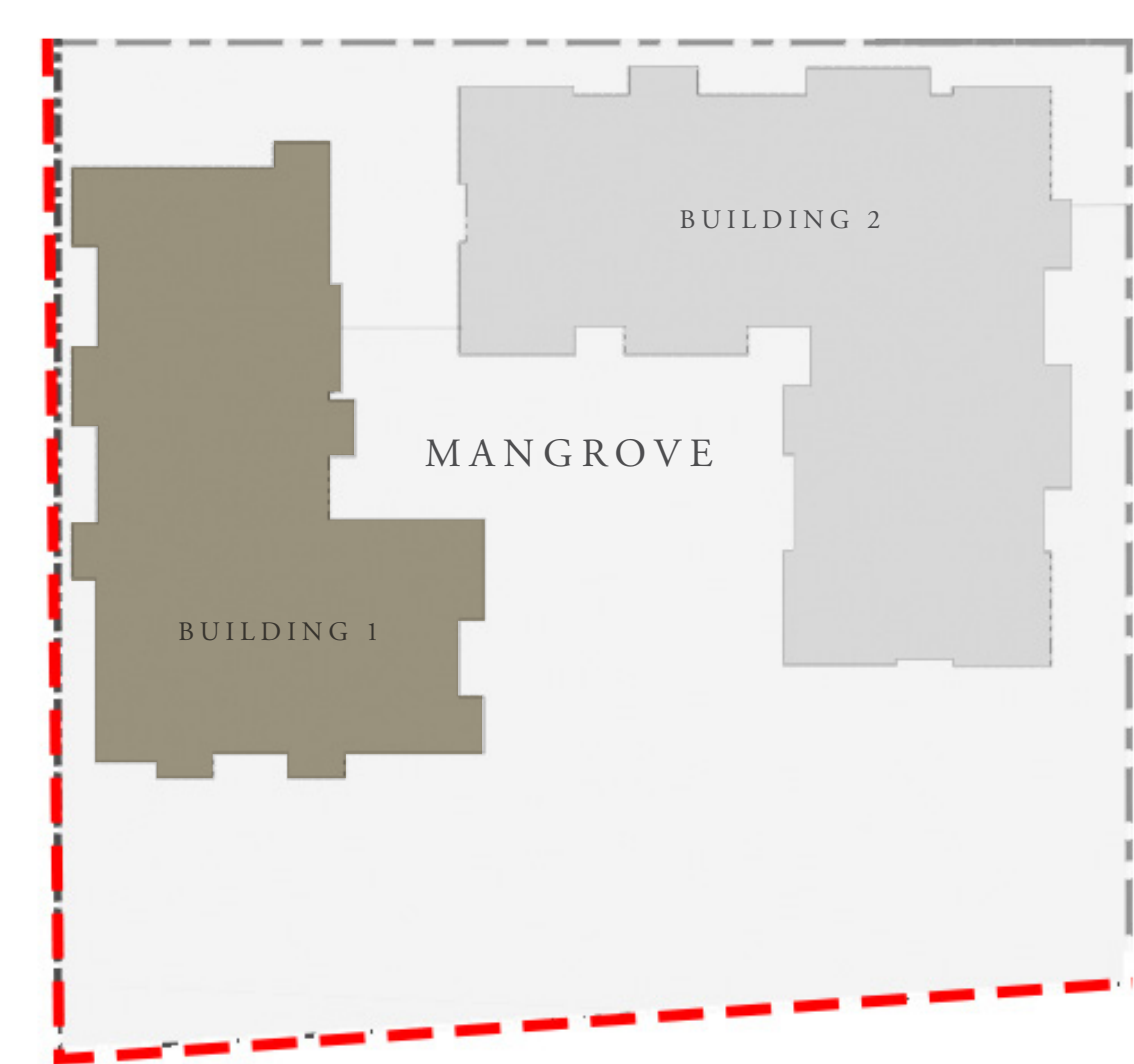
LEVEL 2-7

UNIT 05

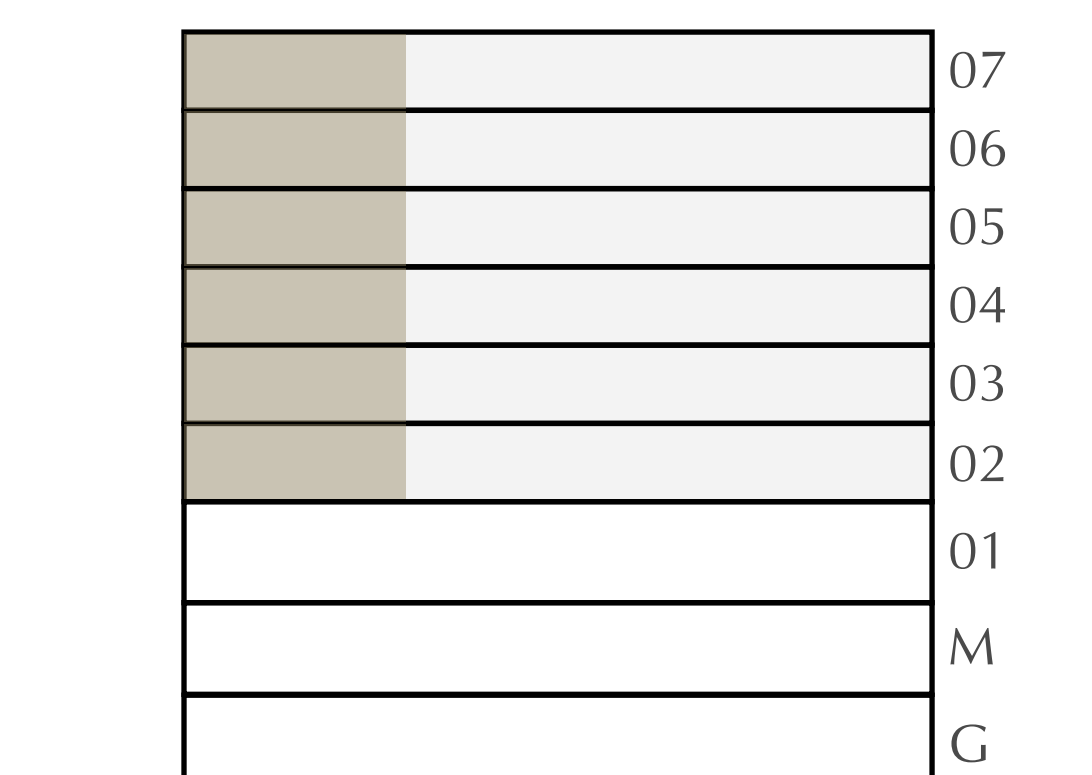
APARTMENT AREA	955.19 SQ.FT.	88.74 SQ.M.
BALCONY AREA	93.00 SQ.FT.	8.64 SQ.M.
TOTAL AREA	1048.19 SQ.FT.	97.38 SQ.M.

CANAL

PARK



KEY PLAN



FLOOR PLAN 1. All dimensions are in imperial and metric, and measured from finish to finish excluding construction tolerances. 2. All materials, dimensions, and drawings are approximate only. 3. Information is subject to change without notice, at developer's absolute discretion. 4. Actual area may vary from the stated area. 5. Drawings not to scale. 6. All images used are for illustrative purposes only and do not represent the actual size, features, specifications, fittings, and furnishings. 7. The developer reserves the right to make revisions / alterations, at it's absolute discretion, without any liability whatsoever.



# MANGROVE

CREEK BEACH

BUILDING - 1

## 1 BEDROOM

LEVEL 2-7

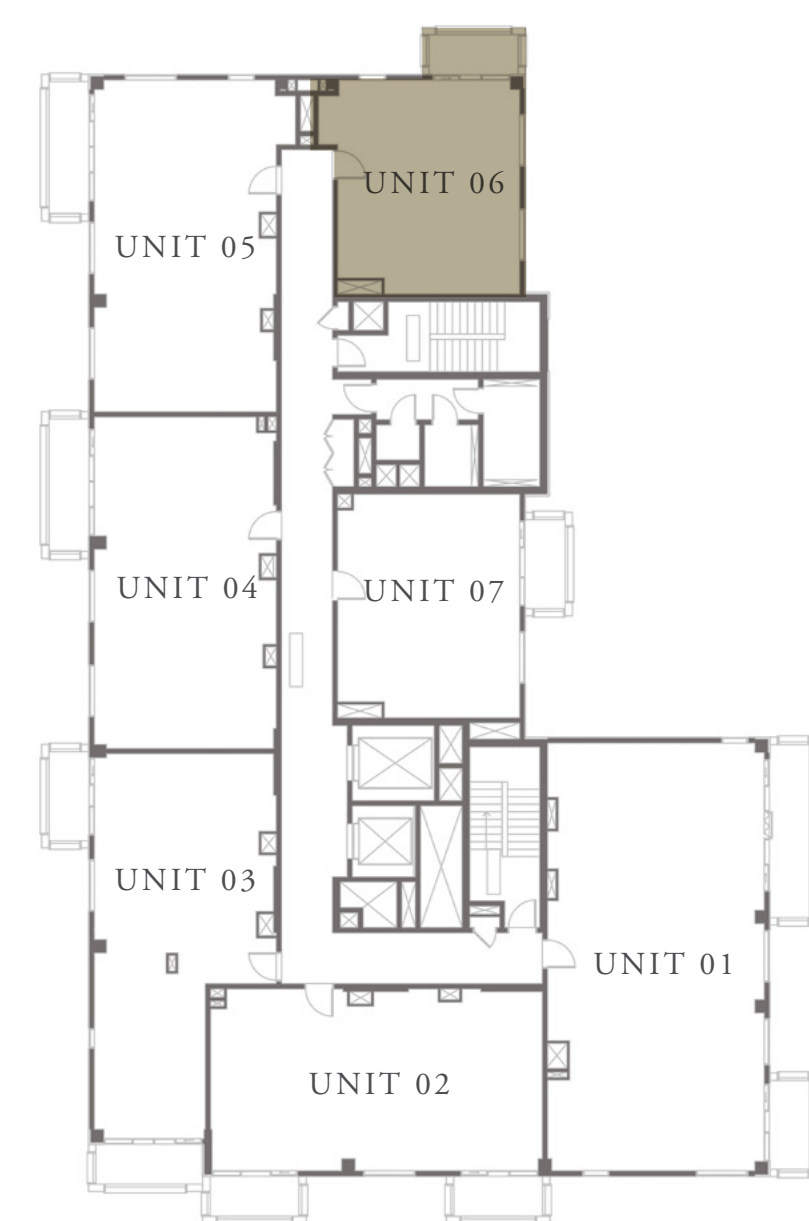
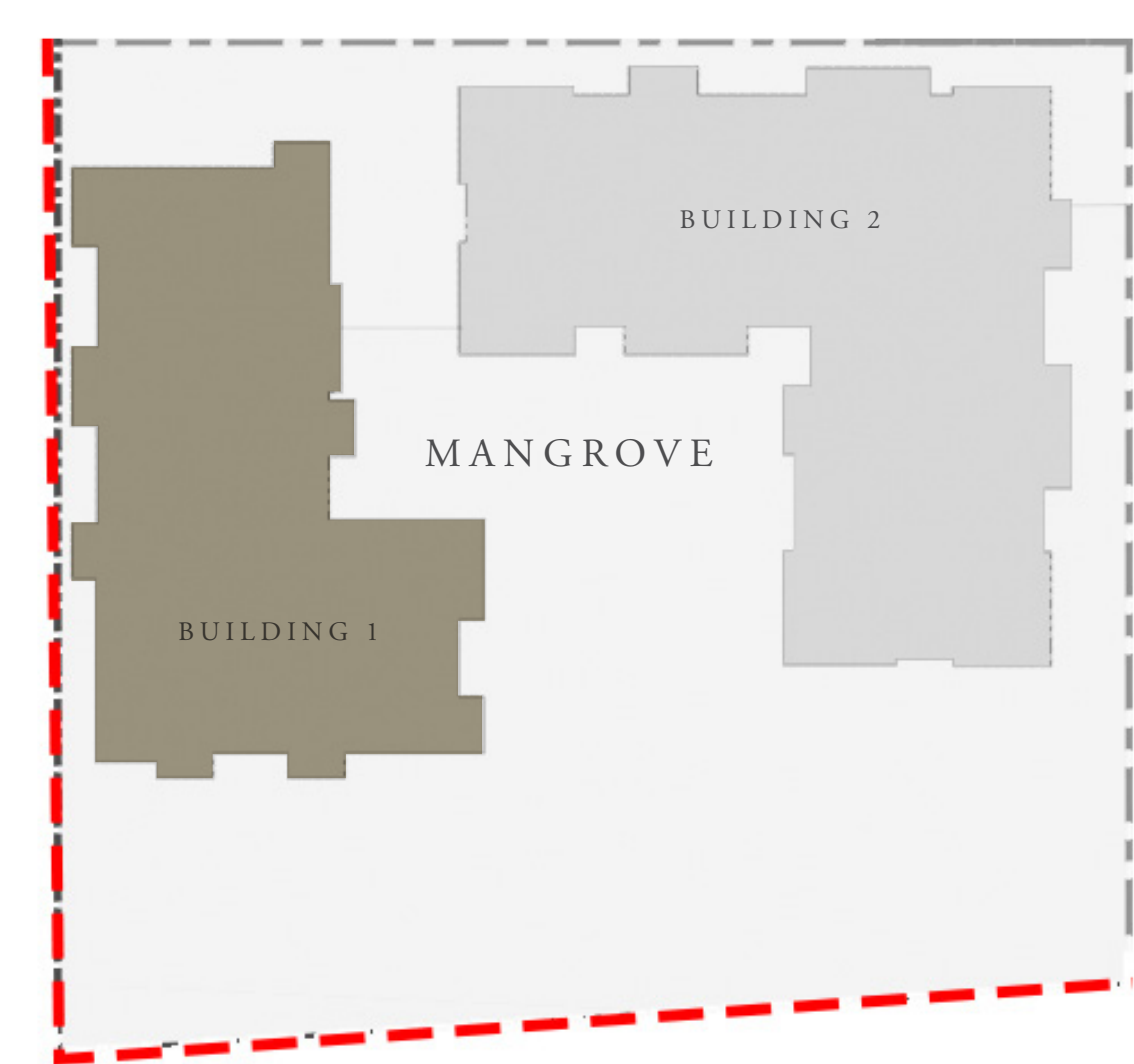
UNIT 06

APARTMENT AREA	626.14 SQ.FT.	58.17 SQ.M.
BALCONY AREA	63.51 SQ.FT.	5.90 SQ.M.
TOTAL AREA	689.65 SQ.FT.	64.07 SQ.M.

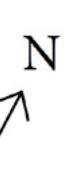
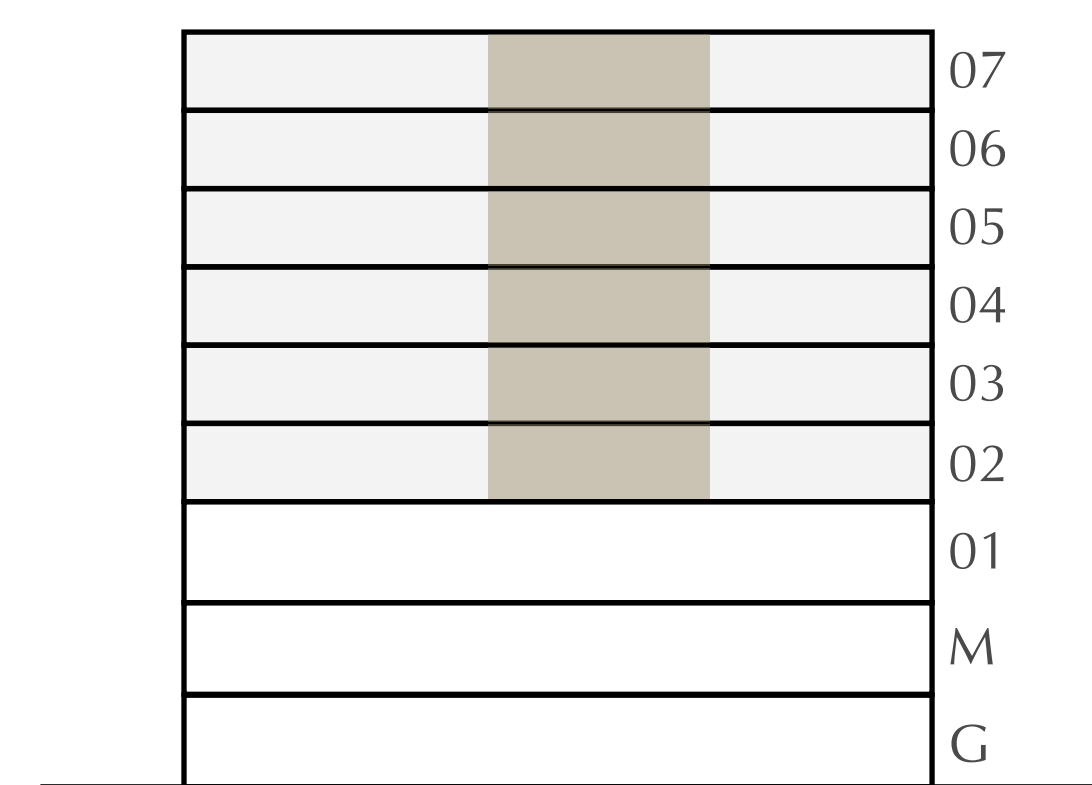
CANAL



PARK



KEY PLAN



FLOOR PLAN 1. All dimensions are in imperial and metric, and measured from finish to finish excluding construction tolerances. 2. All materials, dimensions, and drawings are approximate only. 3. Information is subject to change without notice, at developer's absolute discretion. 4. Actual area may vary from the stated area. 5. Drawings not to scale. 6. All images used are for illustrative purposes only and do not represent the actual size, features, specifications, fittings, and furnishings. 7. The developer reserves the right to make revisions / alterations, at it's absolute discretion, without any liability whatsoever.

# MANGROVE

CREEK BEACH

BUILDING - 1

## 1 BEDROOM

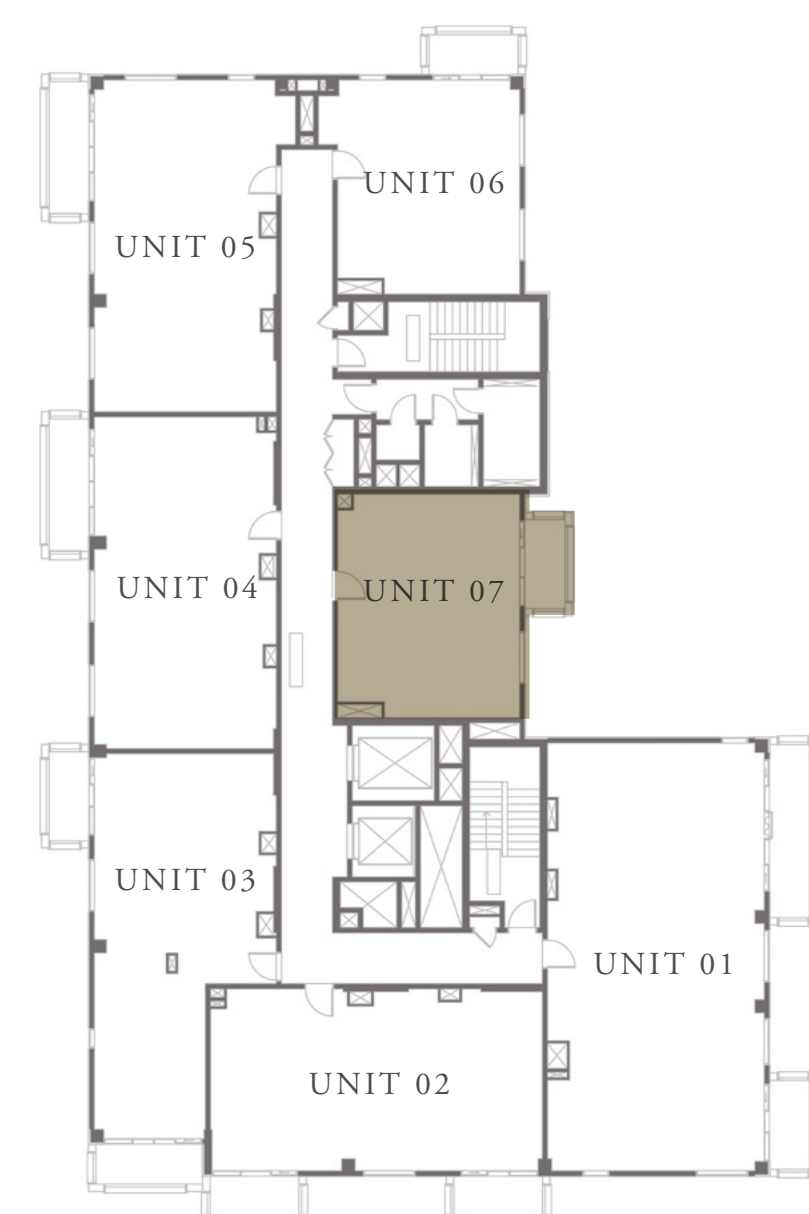
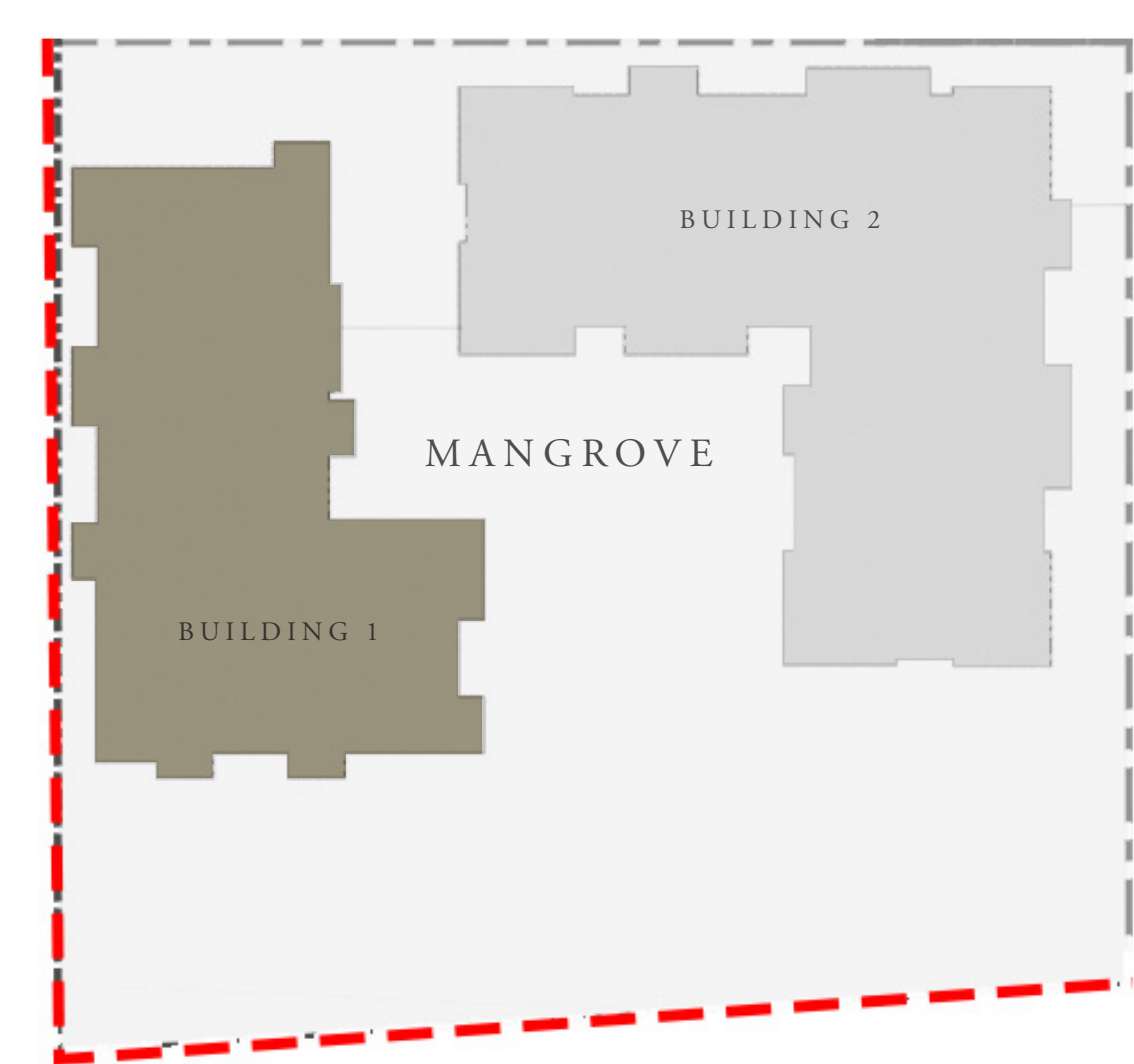
LEVEL 2-7

UNIT 07

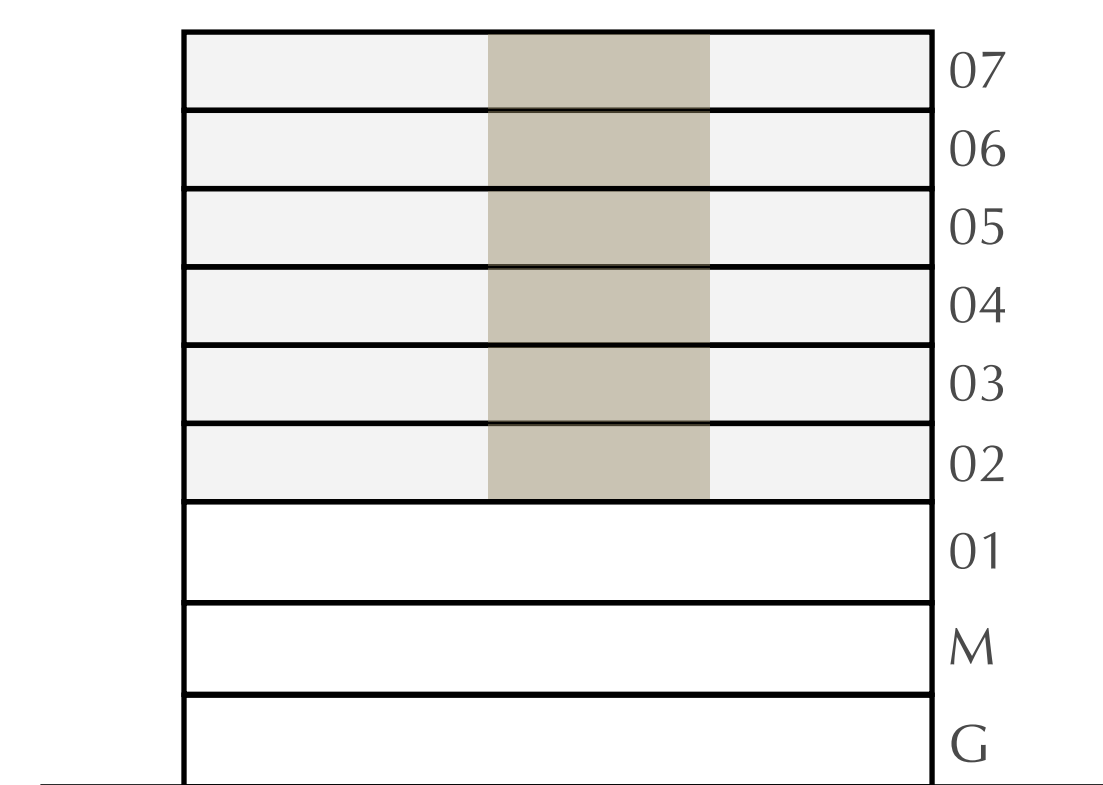
APARTMENT AREA	632.60 SQ.FT.	58.77 SQ.M.
BALCONY AREA	63.40 SQ.FT.	5.89 SQ.M.
TOTAL AREA	696.00 SQ.FT.	64.66 SQ.M.

CANAL

PARK



KEY PLAN



FLOOR PLAN 1. All dimensions are in imperial and metric, and measured from finish to finish excluding construction tolerances. 2. All materials, dimensions, and drawings are approximate only. 3. Information is subject to change without notice, at developer's absolute discretion. 4. Actual area may vary from the stated area. 5. Drawings not to scale. 6. All images used are for illustrative purposes only and do not represent the actual size, features, specifications, fittings, and furnishings. 7. The developer reserves the right to make revisions / alterations, at its absolute discretion, without any liability whatsoever.