



ROVE
CITY WALK

R O V E

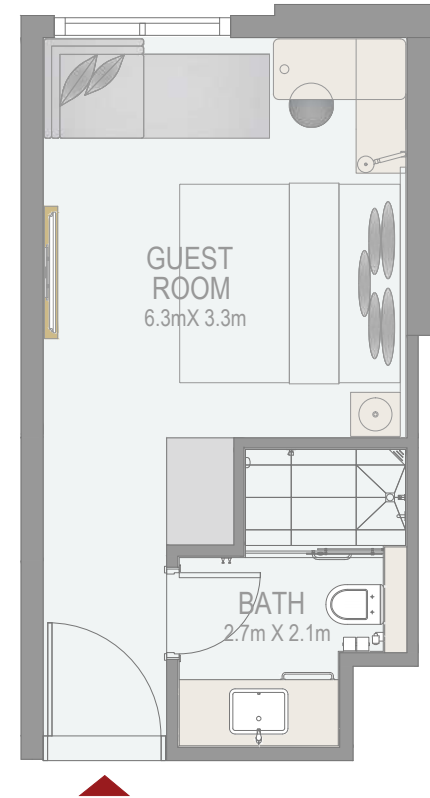
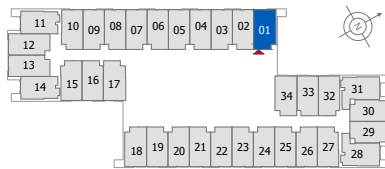
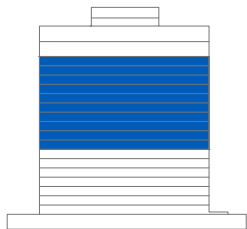
CITY WALK

GUEST ROOM

ROOM 01

8TH -17TH (TYPICAL FLOOR PLAN 3)

ROOM AREA	255.10 SQ.FT.	23.70 SQ.M.
-----------	---------------	-------------



DISCLAIMER: All measurements, dimensions, coordinates and drawings given in the Property (Site/Floor) Plans are approximate and provided only for the purpose of illustration, information and general guidance as such drawings are not to scale. All the floor/site plans including concerned plot/room/swimming pool sizes, specifications, locations and orientations shown have been taken from concept designs prior to the actual development/construction and therefore their accuracy in relation to actual construction cannot be confirmed. Hence, we make no guarantee, warranty or representation as to the accuracy and completeness of the Property (Site/Floor) plan information as changes may be made during the development process, without notice. Always refer to latest IFC design available in the sales office for the most accurate representation of all construction details.

R O V E

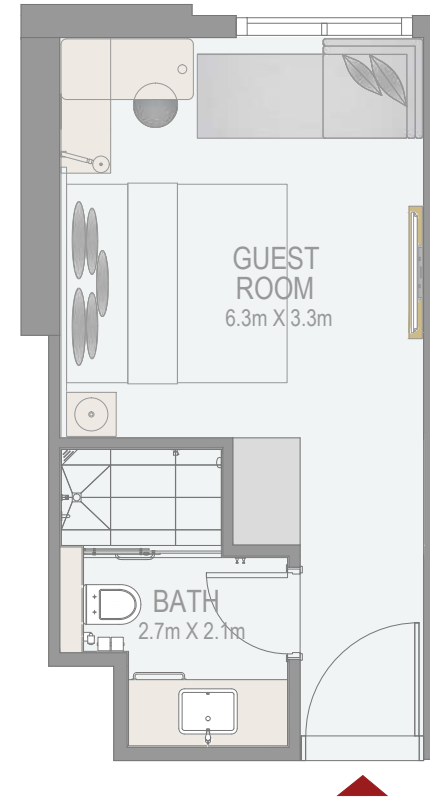
CITY WALK

GUEST ROOM

ROOM 02

8TH -17TH (TYPICAL FLOOR PLAN 3)

ROOM AREA	248.86 SQ.FT.	23.12 SQ.M.
-----------	---------------	-------------



DISCLAIMER: All measurements, dimensions, coordinates and drawings given in the Property (Site/Floor) Plans are approximate and provided only for the purpose of illustration, information and general guidance as such drawings are not to scale. All the floor/site plans including concerned plot/room/swimming pool sizes, specifications, locations and orientations shown have been taken from concept designs prior to the actual development/construction and therefore their accuracy in relation to actual construction cannot be confirmed. Hence, we make no guarantee, warranty or representation as to the accuracy and completeness of the Property (Site/Floor) plan information as changes may be made during the development process, without notice. Always refer to latest IFC design available in the sales office for the most accurate representation of all construction details.

R O V E

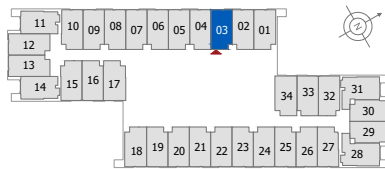
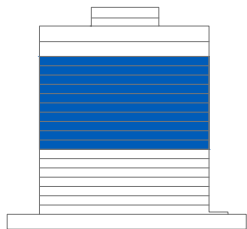
CITY WALK

GUEST ROOM

ROOM 03

8TH -17TH (TYPICAL FLOOR PLAN 3)

ROOM AREA	248.86 SQ.FT.	23.12 SQ.M.
-----------	---------------	-------------



DISCLAIMER: All measurements, dimensions, coordinates and drawings given in the Property (Site/Floor) Plans are approximate and provided only for the purpose of illustration, information and general guidance as such drawings are not to scale. All the floor/site plans including concerned plot/room/swimming pool sizes, specifications, locations and orientations shown have been taken from concept designs prior to the actual development/construction and therefore their accuracy in relation to actual construction cannot be confirmed. Hence, we make no guarantee, warranty or representation as to the accuracy and completeness of the Property (Site/Floor) plan information as changes may be made during the development process, without notice. Always refer to latest IFC design available in the sales office for the most accurate representation of all construction details.

R O V E

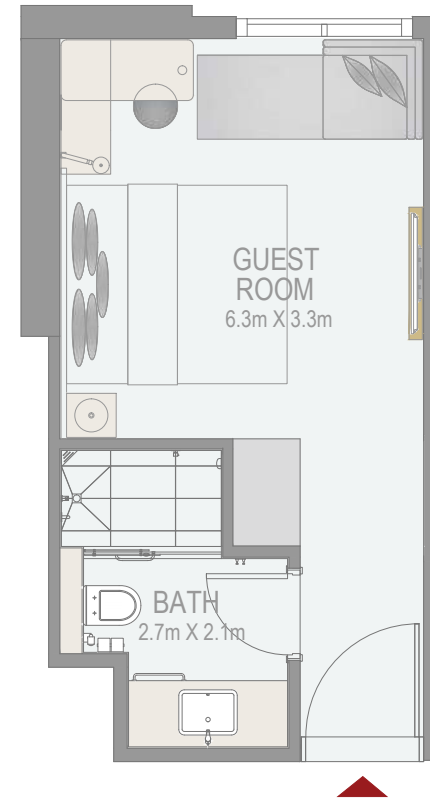
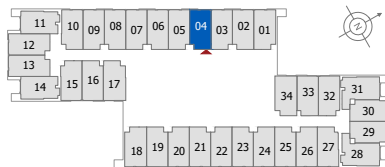
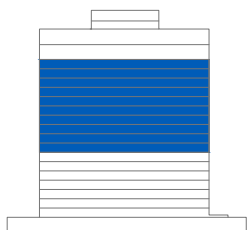
CITY WALK

GUEST ROOM

ROOM 04

8TH -17TH (TYPICAL FLOOR PLAN 3)

ROOM AREA	248.86 SQ.FT.	23.12 SQ.M.
-----------	---------------	-------------



DISCLAIMER: All measurements, dimensions, coordinates and drawings given in the Property (Site/Floor) Plans are approximate and provided only for the purpose of illustration, information and general guidance as such drawings are not to scale. All the floor/site plans including concerned plot/room/swimming pool sizes, specifications, locations and orientations shown have been taken from concept designs prior to the actual development/construction and therefore their accuracy in relation to actual construction cannot be confirmed. Hence, we make no guarantee, warranty or representation as to the accuracy and completeness of the Property (Site/Floor) plan information as changes may be made during the development process, without notice. Always refer to latest IFC design available in the sales office for the most accurate representation of all construction details.

R O V E

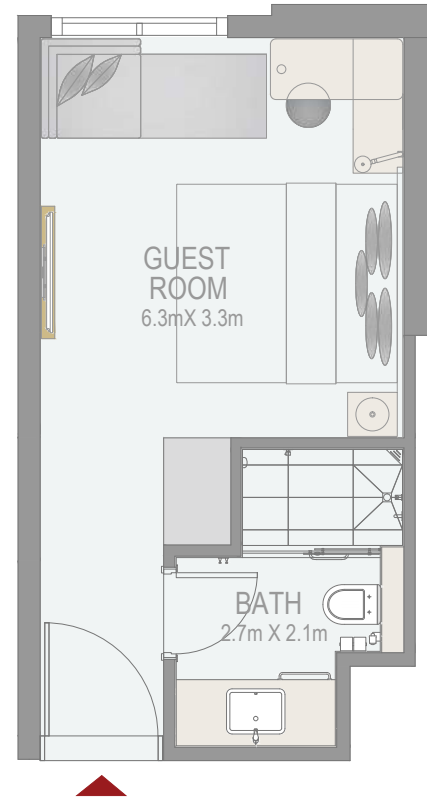
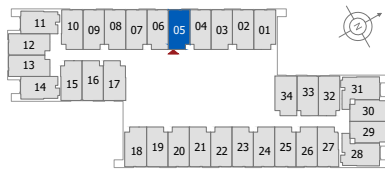
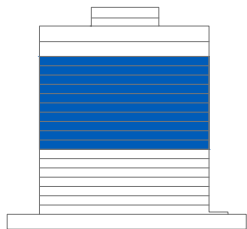
CITY WALK

GUEST ROOM

ROOM 05

8TH -17TH (TYPICAL FLOOR PLAN 3)

ROOM AREA	248.86 SQ.FT.	23.12 SQ.M.
-----------	---------------	-------------



DISCLAIMER: All measurements, dimensions, coordinates and drawings given in the Property (Site/Floor) Plans are approximate and provided only for the purpose of illustration, information and general guidance as such drawings are not to scale. All the floor/site plans including concerned plot/room/swimming pool sizes, specifications, locations and orientations shown have been taken from concept designs prior to the actual development/construction and therefore their accuracy in relation to actual construction cannot be confirmed. Hence, we make no guarantee, warranty or representation as to the accuracy and completeness of the Property (Site/Floor) plan information as changes may be made during the development process, without notice. Always refer to latest IFC design available in the sales office for the most accurate representation of all construction details.

R O V E

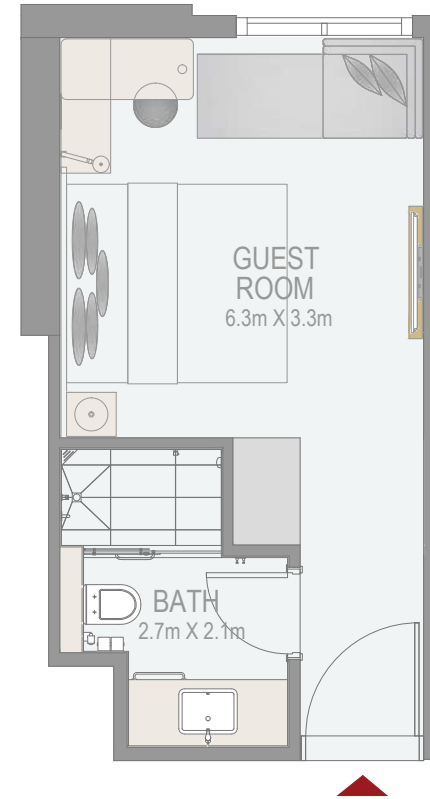
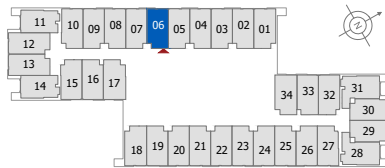
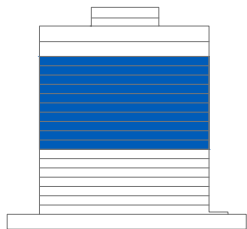
CITY WALK

GUEST ROOM

ROOM 06

8TH -17TH (TYPICAL FLOOR PLAN 3)

ROOM AREA	248.86 SQ.FT.	23.12 SQ.M.
-----------	---------------	-------------



DISCLAIMER: All measurements, dimensions, coordinates and drawings given in the Property (Site/Floor) Plans are approximate and provided only for the purpose of illustration, information and general guidance as such drawings are not to scale. All the floor/site plans including concerned plot/room/swimming pool sizes, specifications, locations and orientations shown have been taken from concept designs prior to the actual development/construction and therefore their accuracy in relation to actual construction cannot be confirmed. Hence, we make no guarantee, warranty or representation as to the accuracy and completeness of the Property (Site/Floor) plan information as changes may be made during the development process, without notice. Always refer to latest IFC design available in the sales office for the most accurate representation of all construction details.

R O V E

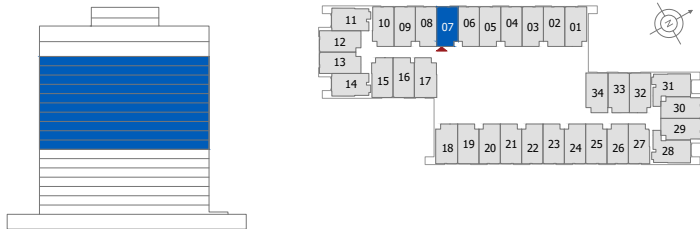
CITY WALK

GUEST ROOM

ROOM 07

8TH -17TH (TYPICAL FLOOR PLAN 3)

ROOM AREA	248.86 SQ.FT.	23.12 SQ.M.
-----------	---------------	-------------



DISCLAIMER: All measurements, dimensions, coordinates and drawings given in the Property (Site/Floor) Plans are approximate and provided only for the purpose of illustration, information and general guidance as such drawings are not to scale. All the floor/site plans including concerned plot/room/swimming pool sizes, specifications, locations and orientations shown have been taken from concept designs prior to the actual development/construction and therefore their accuracy in relation to actual construction cannot be confirmed. Hence, we make no guarantee, warranty or representation as to the accuracy and completeness of the Property (Site/Floor) plan information as changes may be made during the development process, without notice. Always refer to latest IFC design available in the sales office for the most accurate representation of all construction details.

R O V E

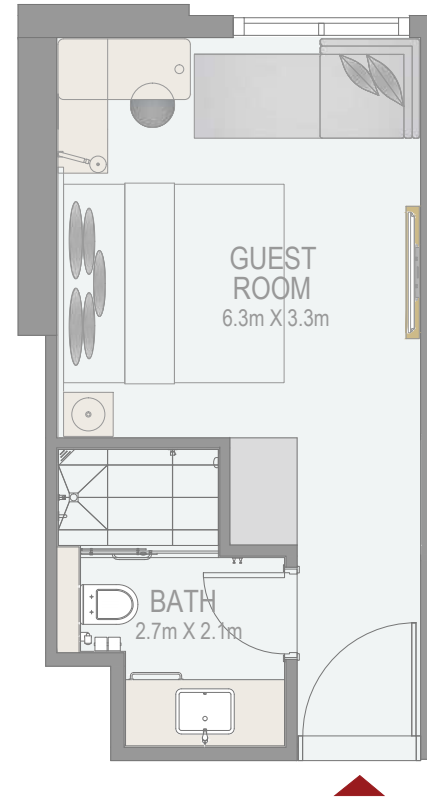
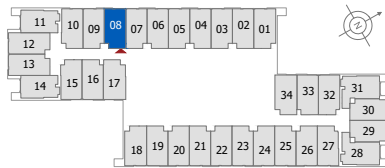
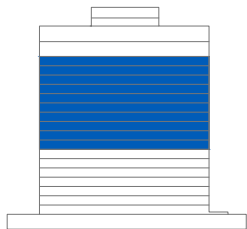
CITY WALK

GUEST ROOM

ROOM 08

8TH -17TH (TYPICAL FLOOR PLAN 3)

ROOM AREA	248.86 SQ.FT.	23.12 SQ.M.
-----------	---------------	-------------



DISCLAIMER: All measurements, dimensions, coordinates and drawings given in the Property (Site/Floor) Plans are approximate and provided only for the purpose of illustration, information and general guidance as such drawings are not to scale. All the floor/site plans including concerned plot/room/swimming pool sizes, specifications, locations and orientations shown have been taken from concept designs prior to the actual development/construction and therefore their accuracy in relation to actual construction cannot be confirmed. Hence, we make no guarantee, warranty or representation as to the accuracy and completeness of the Property (Site/Floor) plan information as changes may be made during the development process, without notice. Always refer to latest IFC design available in the sales office for the most accurate representation of all construction details.

R O V E

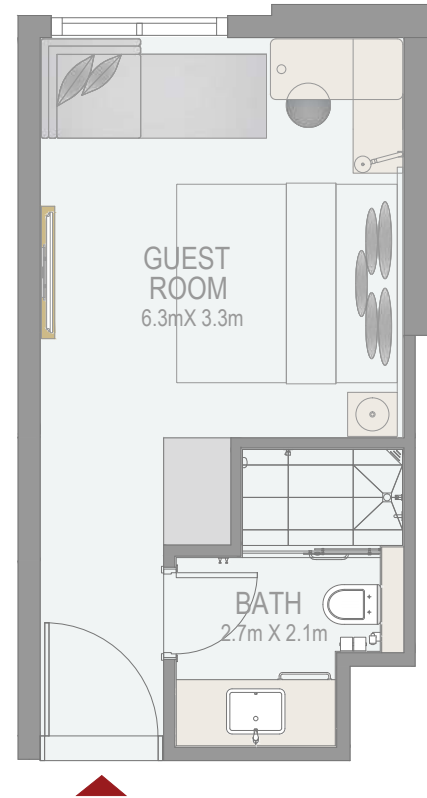
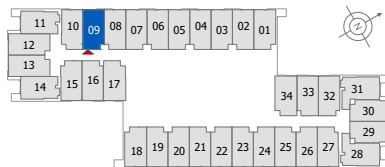
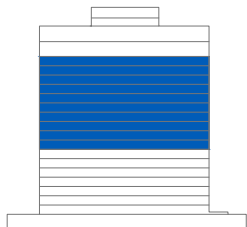
CITY WALK

GUEST ROOM

ROOM 09

8TH -17TH (TYPICAL FLOOR PLAN 3)

ROOM AREA	248.86 SQ.FT.	23.12 SQ.M.
-----------	---------------	-------------



DISCLAIMER: All measurements, dimensions, coordinates and drawings given in the Property (Site/Floor) Plans are approximate and provided only for the purpose of illustration, information and general guidance as such drawings are not to scale. All the floor/site plans including concerned plot/room/swimming pool sizes, specifications, locations and orientations shown have been taken from concept designs prior to the actual development/construction and therefore their accuracy in relation to actual construction cannot be confirmed. Hence, we make no guarantee, warranty or representation as to the accuracy and completeness of the Property (Site/Floor) plan information as changes may be made during the development process, without notice. Always refer to latest IFC design available in the sales office for the most accurate representation of all construction details.

R O V E

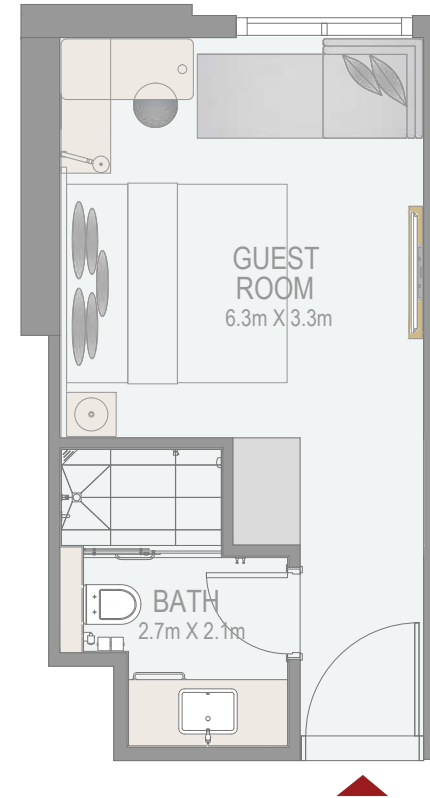
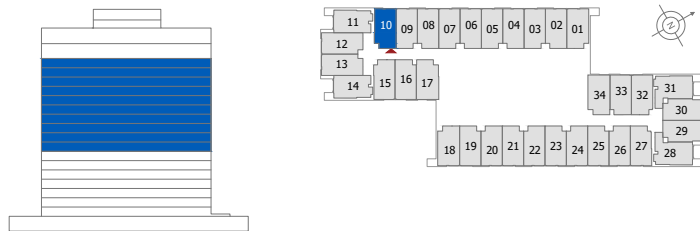
CITY WALK

GUEST ROOM

ROOM 10

8TH -17TH (TYPICAL FLOOR PLAN 3)

ROOM AREA	249.83 SQ.FT.	23.21 SQ.M.
-----------	---------------	-------------



DISCLAIMER: All measurements, dimensions, coordinates and drawings given in the Property (Site/Floor) Plans are approximate and provided only for the purpose of illustration, information and general guidance as such drawings are not to scale. All the floor/site plans including concerned plot/room/swimming pool sizes, specifications, locations and orientations shown have been taken from concept designs prior to the actual development/construction and therefore their accuracy in relation to actual construction cannot be confirmed. Hence, we make no guarantee, warranty or representation as to the accuracy and completeness of the Property (Site/Floor) plan information as changes may be made during the development process, without notice. Always refer to latest IFC design available in the sales office for the most accurate representation of all construction details.

ROVE

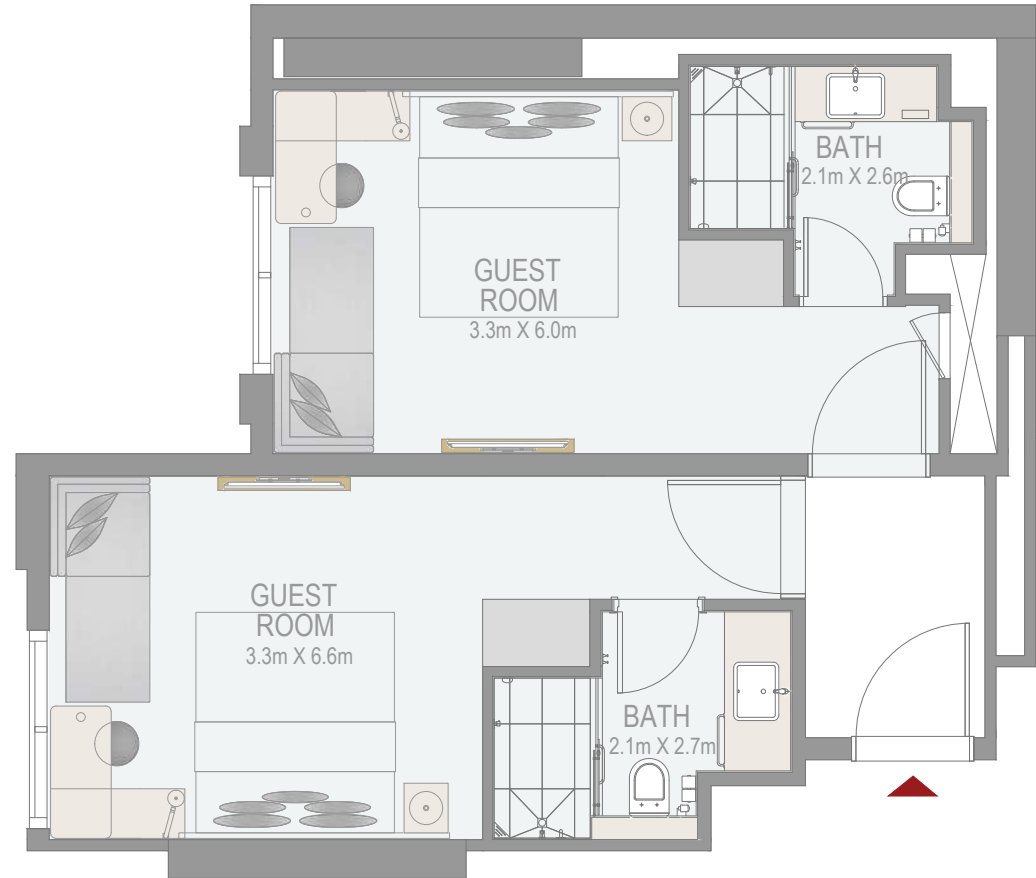
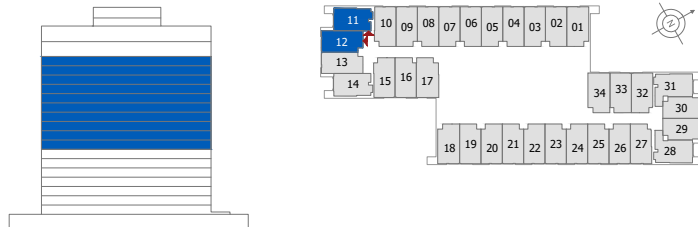
CITY WALK

GUEST ROOM

ROOM 11 & 12 (Interconnecting Rooms)

8TH -17TH (TYPICAL FLOOR PLAN 3)

ROOM 11 AREA	258.76 SQ.FT.	24.04 SQ.M.
ROOM 12 AREA	260.27 SQ.FT.	24.18 SQ.M.
TOTAL AREA	519.04 SQ.FT.	48.22 SQ.M.



DISCLAIMER: All measurements, dimensions, coordinates and drawings given in the Property (Site/Floor) Plans are approximate and provided only for the purpose of illustration, information and general guidance as such drawings are not to scale. All the floor/site plans including concerned plot/room/swimming pool sizes, specifications, locations and orientations shown have been taken from concept designs prior to the actual development/construction and therefore their accuracy in relation to actual construction cannot be confirmed. Hence, we make no guarantee, warranty or representation as to the accuracy and completeness of the Property (Site/Floor) plan information as changes may be made during the development process, without notice. Always refer to latest IFC design available in the sales office for the most accurate representation of all construction details.

R O V E

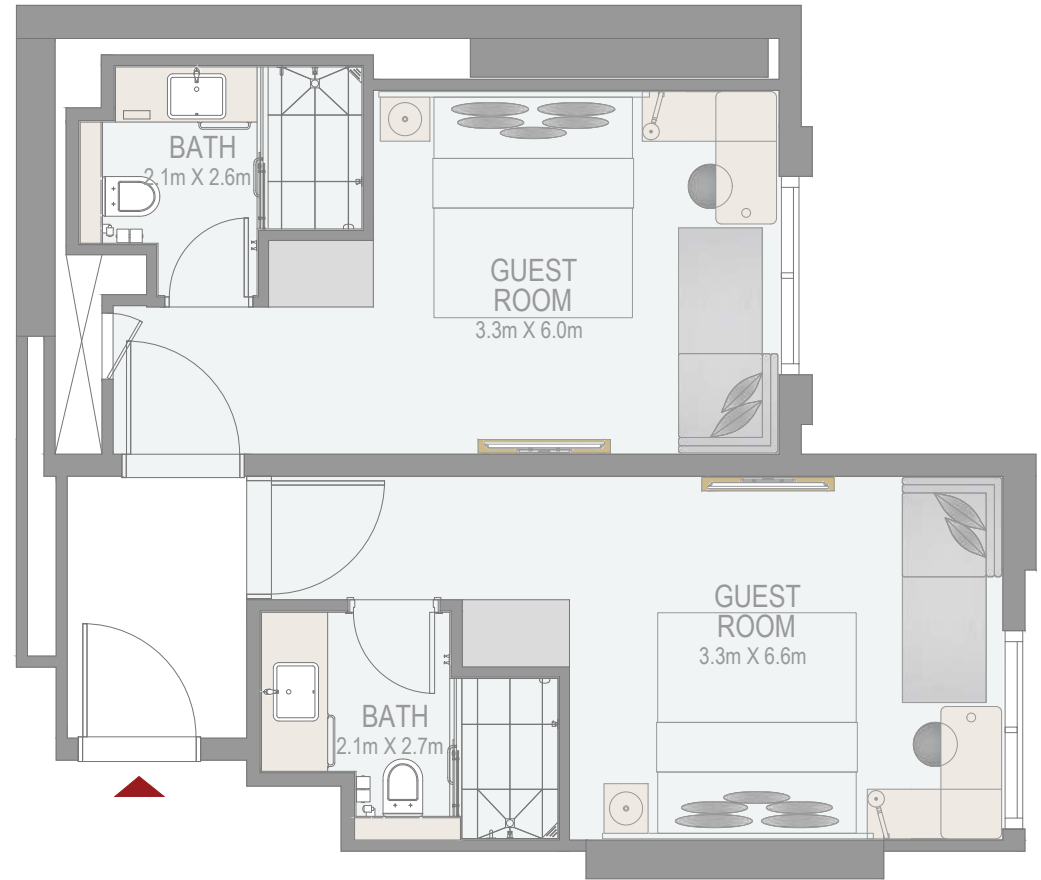
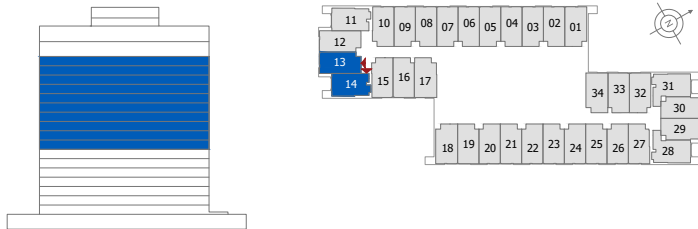
CITY WALK

GUEST ROOM

ROOM 13 & 14 (Interconnecting Rooms)

8TH -17TH (TYPICAL FLOOR PLAN 3)

ROOM 13 AREA	260.27 SQ.FT.	24.18 SQ.M.
ROOM 14 AREA	258.76 SQ.FT.	24.04 SQ.M.
TOTAL AREA	519.04 SQ.FT.	48.22 SQ.M.



DISCLAIMER: All measurements, dimensions, coordinates and drawings given in the Property (Site/Floor) Plans are approximate and provided only for the purpose of illustration, information and general guidance as such drawings are not to scale. All the floor/site plans including concerned plot/room/swimming pool sizes, specifications, locations and orientations shown have been taken from concept designs prior to the actual development/construction and therefore their accuracy in relation to actual construction cannot be confirmed. Hence, we make no guarantee, warranty or representation as to the accuracy and completeness of the Property (Site/Floor) plan information as changes may be made during the development process, without notice. Always refer to latest IFC design available in the sales office for the most accurate representation of all construction details.

R O V E

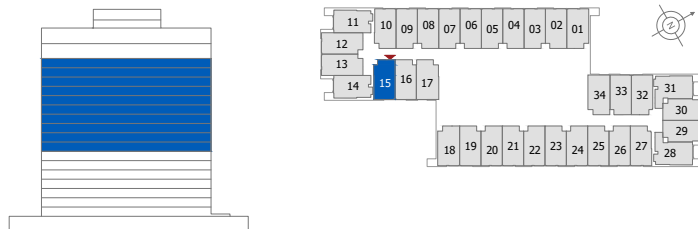
CITY WALK

GUEST ROOM

ROOM 15

8TH -17TH (TYPICAL FLOOR PLAN 3)

ROOM AREA	247.68 SQ.FT.	23.01 SQ.M.
-----------	---------------	-------------



DISCLAIMER: All measurements, dimensions, coordinates and drawings given in the Property (Site/Floor) Plans are approximate and provided only for the purpose of illustration, information and general guidance as such drawings are not to scale. All the floor/site plans including concerned plot/room/swimming pool sizes, specifications, locations and orientations shown have been taken from concept designs prior to the actual development/construction and therefore their accuracy in relation to actual construction cannot be confirmed. Hence, we make no guarantee, warranty or representation as to the accuracy and completeness of the Property (Site/Floor) plan information as changes may be made during the development process, without notice. Always refer to latest IFC design available in the sales office for the most accurate representation of all construction details.

R O V E

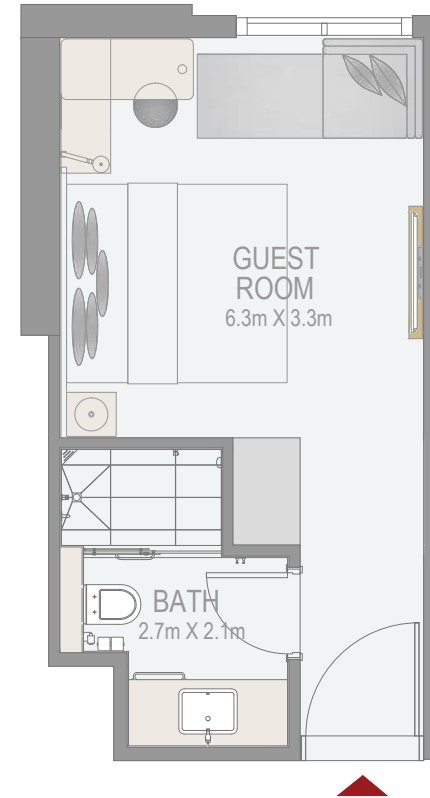
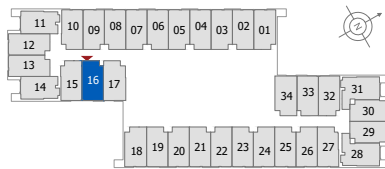
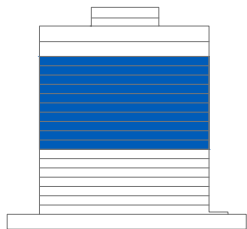
CITY WALK

GUEST ROOM

ROOM 16

8TH -17TH (TYPICAL FLOOR PLAN 3)

ROOM AREA	249.72 SQ.FT.	23.20 SQ.M.
-----------	---------------	-------------



DISCLAIMER: All measurements, dimensions, coordinates and drawings given in the Property (Site/Floor) Plans are approximate and provided only for the purpose of illustration, information and general guidance as such drawings are not to scale. All the floor/site plans including concerned plot/room/swimming pool sizes, specifications, locations and orientations shown have been taken from concept designs prior to the actual development/construction and therefore their accuracy in relation to actual construction cannot be confirmed. Hence, we make no guarantee, warranty or representation as to the accuracy and completeness of the Property (Site/Floor) plan information as changes may be made during the development process, without notice. Always refer to latest IFC design available in the sales office for the most accurate representation of all construction details.

R O V E

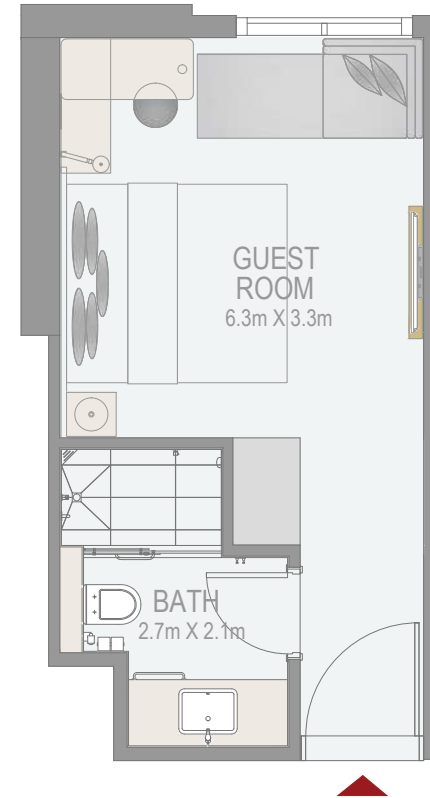
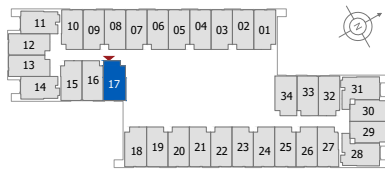
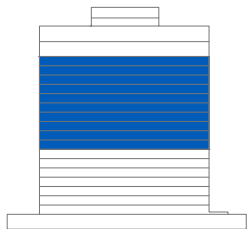
CITY WALK

GUEST ROOM

ROOM 17

8TH -17TH (TYPICAL FLOOR PLAN 3)

ROOM AREA	256.50 SQ.FT.	23.83 SQ.M.
-----------	---------------	-------------



DISCLAIMER: All measurements, dimensions, coordinates and drawings given in the Property (Site/Floor) Plans are approximate and provided only for the purpose of illustration, information and general guidance as such drawings are not to scale. All the floor/site plans including concerned plot/room/swimming pool sizes, specifications, locations and orientations shown have been taken from concept designs prior to the actual development/construction and therefore their accuracy in relation to actual construction cannot be confirmed. Hence, we make no guarantee, warranty or representation as to the accuracy and completeness of the Property (Site/Floor) plan information as changes may be made during the development process, without notice. Always refer to latest IFC design available in the sales office for the most accurate representation of all construction details.

ROVE

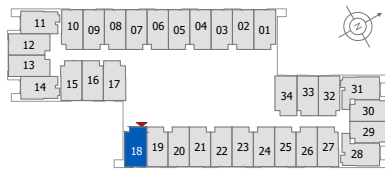
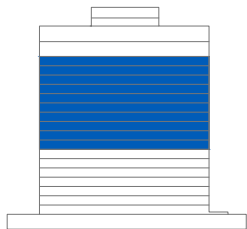
CITY WALK

GUEST ROOM

ROOM 18

8TH -17TH (TYPICAL FLOOR PLAN 3)

ROOM AREA	255.10 SQ.FT.	23.70 SQ.M.
-----------	---------------	-------------



DISCLAIMER: All measurements, dimensions, coordinates and drawings given in the Property (Site/Floor) Plans are approximate and provided only for the purpose of illustration, information and general guidance as such drawings are not to scale. All the floor/site plans including concerned plot/room/swimming pool sizes, specifications, locations and orientations shown have been taken from concept designs prior to the actual development/construction and therefore their accuracy in relation to actual construction cannot be confirmed. Hence, we make no guarantee, warranty or representation as to the accuracy and completeness of the Property (Site/Floor) plan information as changes may be made during the development process, without notice. Always refer to latest IFC design available in the sales office for the most accurate representation of all construction details.

R O V E

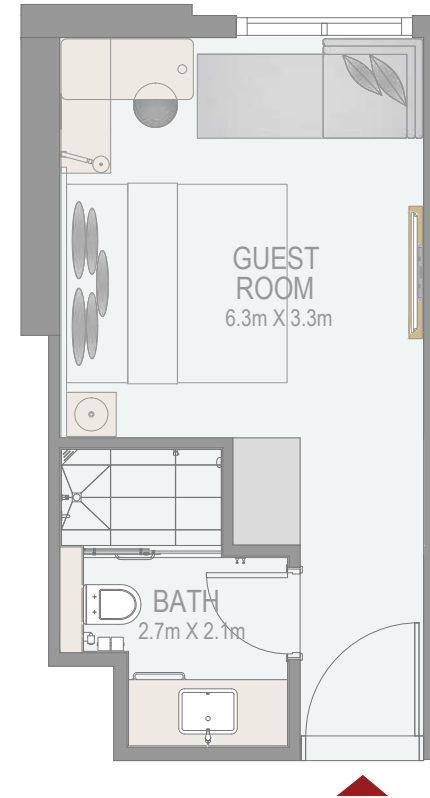
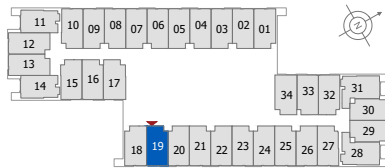
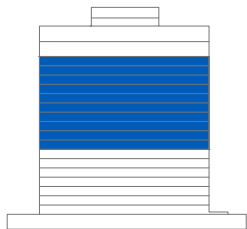
CITY WALK

GUEST ROOM

ROOM 19

8TH -17TH (TYPICAL FLOOR PLAN 3)

ROOM AREA	249.08 SQ.FT.	23.14 SQ.M.
-----------	---------------	-------------



DISCLAIMER: All measurements, dimensions, coordinates and drawings given in the Property (Site/Floor) Plans are approximate and provided only for the purpose of illustration, information and general guidance as such drawings are not to scale. All the floor/site plans including concerned plot/room/swimming pool sizes, specifications, locations and orientations shown have been taken from concept designs prior to the actual development/construction and therefore their accuracy in relation to actual construction cannot be confirmed. Hence, we make no guarantee, warranty or representation as to the accuracy and completeness of the Property (Site/Floor) plan information as changes may be made during the development process, without notice. Always refer to latest IFC design available in the sales office for the most accurate representation of all construction details.

ROVE

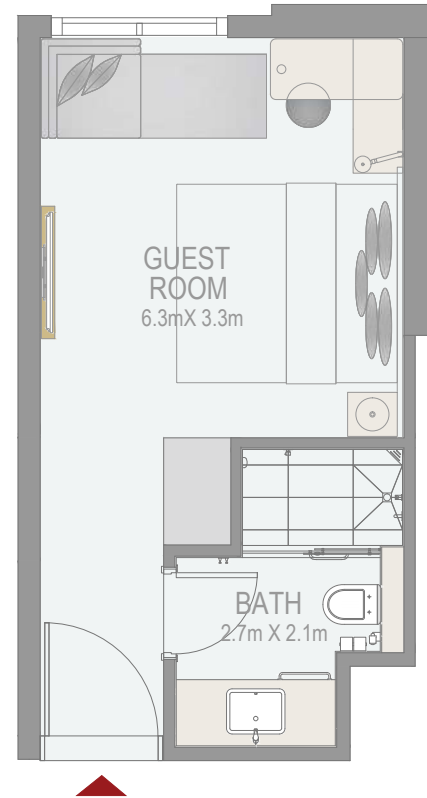
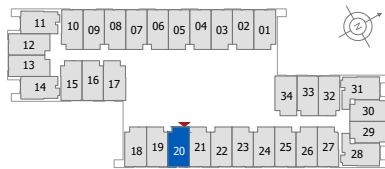
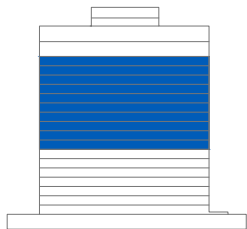
CITY WALK

GUEST ROOM

ROOM 20

8TH -17TH (TYPICAL FLOOR PLAN 3)

ROOM AREA	248.86 SQ.FT.	23.12 SQ.M.
-----------	---------------	-------------



DISCLAIMER: All measurements, dimensions, coordinates and drawings given in the Property (Site/Floor) Plans are approximate and provided only for the purpose of illustration, information and general guidance as such drawings are not to scale. All the floor/site plans including concerned plot/room/swimming pool sizes, specifications, locations and orientations shown have been taken from concept designs prior to the actual development/construction and therefore their accuracy in relation to actual construction cannot be confirmed. Hence, we make no guarantee, warranty or representation as to the accuracy and completeness of the Property (Site/Floor) plan information as changes may be made during the development process, without notice. Always refer to latest IFC design available in the sales office for the most accurate representation of all construction details.

R O V E

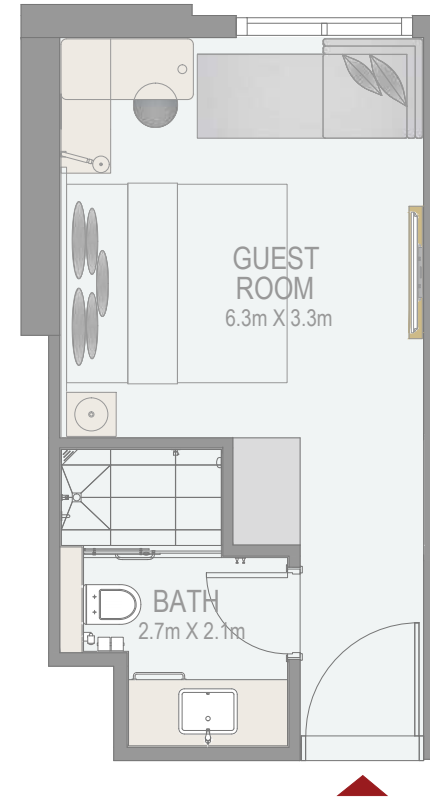
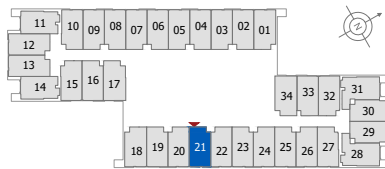
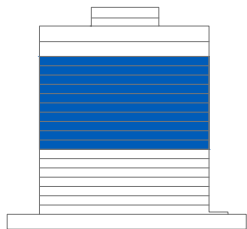
CITY WALK

GUEST ROOM

ROOM 21

8TH -17TH (TYPICAL FLOOR PLAN 3)

ROOM AREA	248.86 SQ.FT.	23.12 SQ.M.
-----------	---------------	-------------



DISCLAIMER: All measurements, dimensions, coordinates and drawings given in the Property (Site/Floor) Plans are approximate and provided only for the purpose of illustration, information and general guidance as such drawings are not to scale. All the floor/site plans including concerned plot/room/swimming pool sizes, specifications, locations and orientations shown have been taken from concept designs prior to the actual development/construction and therefore their accuracy in relation to actual construction cannot be confirmed. Hence, we make no guarantee, warranty or representation as to the accuracy and completeness of the Property (Site/Floor) plan information as changes may be made during the development process, without notice. Always refer to latest IFC design available in the sales office for the most accurate representation of all construction details.

R O V E

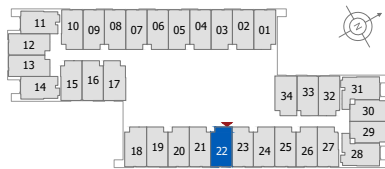
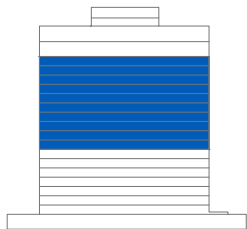
CITY WALK

GUEST ROOM

ROOM 22

8TH -17TH (TYPICAL FLOOR PLAN 3)

ROOM AREA	248.86 SQ.FT.	23.12 SQ.M.
-----------	---------------	-------------



DISCLAIMER: All measurements, dimensions, coordinates and drawings given in the Property (Site/Floor) Plans are approximate and provided only for the purpose of illustration, information and general guidance as such drawings are not to scale. All the floor/site plans including concerned plot/room/swimming pool sizes, specifications, locations and orientations shown have been taken from concept designs prior to the actual development/construction and therefore their accuracy in relation to actual construction cannot be confirmed. Hence, we make no guarantee, warranty or representation as to the accuracy and completeness of the Property (Site/Floor) plan information as changes may be made during the development process, without notice. Always refer to latest IFC design available in the sales office for the most accurate representation of all construction details.

R O V E

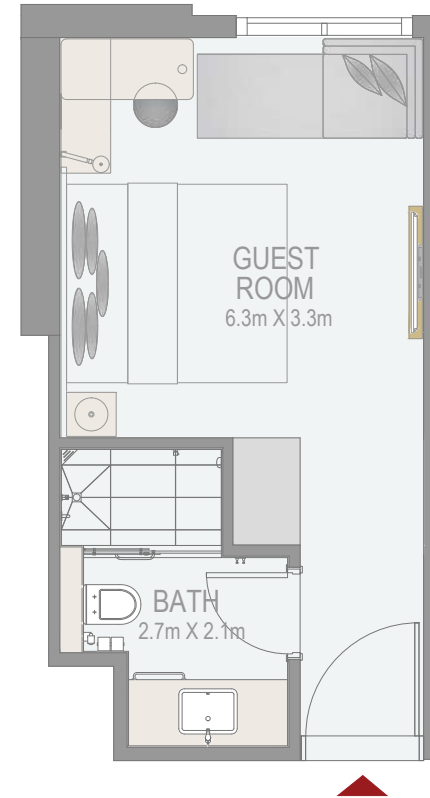
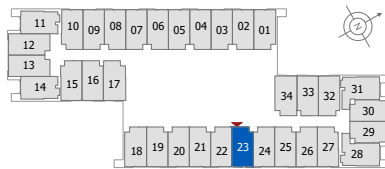
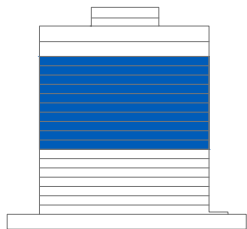
CITY WALK

GUEST ROOM

ROOM 23

8TH -17TH (TYPICAL FLOOR PLAN 3)

ROOM AREA	248.86 SQ.FT.	23.12 SQ.M.
-----------	---------------	-------------



DISCLAIMER: All measurements, dimensions, coordinates and drawings given in the Property (Site/Floor) Plans are approximate and provided only for the purpose of illustration, information and general guidance as such drawings are not to scale. All the floor/site plans including concerned plot/room/swimming pool sizes, specifications, locations and orientations shown have been taken from concept designs prior to the actual development/construction and therefore their accuracy in relation to actual construction cannot be confirmed. Hence, we make no guarantee, warranty or representation as to the accuracy and completeness of the Property (Site/Floor) plan information as changes may be made during the development process, without notice. Always refer to latest IFC design available in the sales office for the most accurate representation of all construction details.

R O V E

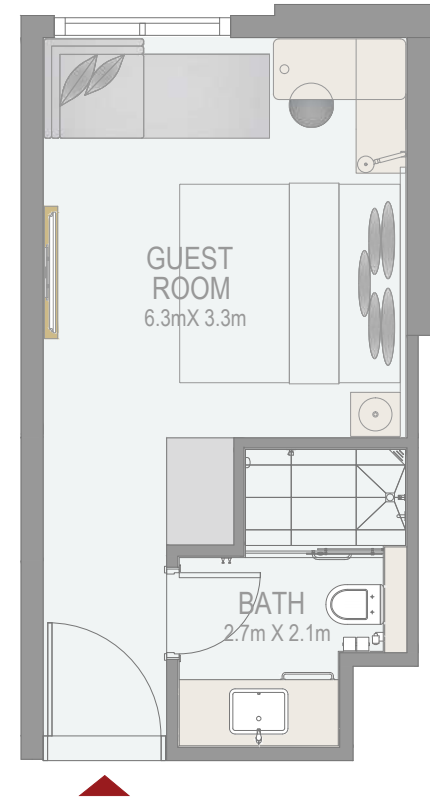
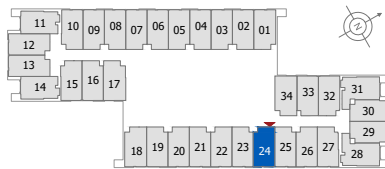
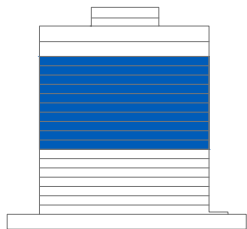
CITY WALK

GUEST ROOM

ROOM 24

8TH -17TH (TYPICAL FLOOR PLAN 3)

ROOM AREA	248.86 SQ.FT.	23.12 SQ.M.
-----------	---------------	-------------



DISCLAIMER: All measurements, dimensions, coordinates and drawings given in the Property (Site/Floor) Plans are approximate and provided only for the purpose of illustration, information and general guidance as such drawings are not to scale. All the floor/site plans including concerned plot/room/swimming pool sizes, specifications, locations and orientations shown have been taken from concept designs prior to the actual development/construction and therefore their accuracy in relation to actual construction cannot be confirmed. Hence, we make no guarantee, warranty or representation as to the accuracy and completeness of the Property (Site/Floor) plan information as changes may be made during the development process, without notice. Always refer to latest IFC design available in the sales office for the most accurate representation of all construction details.

R O V E

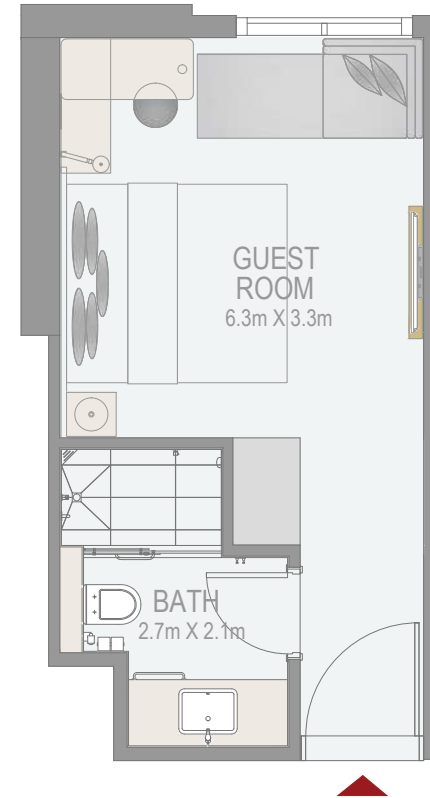
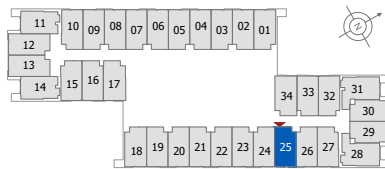
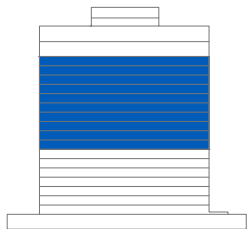
CITY WALK

GUEST ROOM

ROOM 25

8TH -17TH (TYPICAL FLOOR PLAN 3)

ROOM AREA	248.86 SQ.FT.	23.12 SQ.M.
-----------	---------------	-------------



DISCLAIMER: All measurements, dimensions, coordinates and drawings given in the Property (Site/Floor) Plans are approximate and provided only for the purpose of illustration, information and general guidance as such drawings are not to scale. All the floor/site plans including concerned plot/room/swimming pool sizes, specifications, locations and orientations shown have been taken from concept designs prior to the actual development/construction and therefore their accuracy in relation to actual construction cannot be confirmed. Hence, we make no guarantee, warranty or representation as to the accuracy and completeness of the Property (Site/Floor) plan information as changes may be made during the development process, without notice. Always refer to latest IFC design available in the sales office for the most accurate representation of all construction details.

R O V E

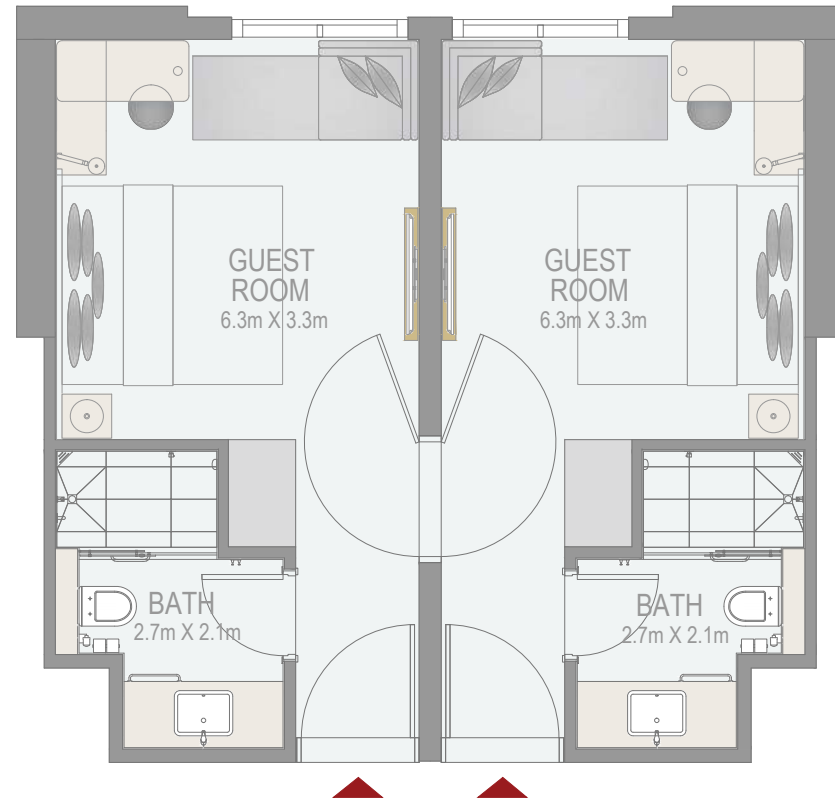
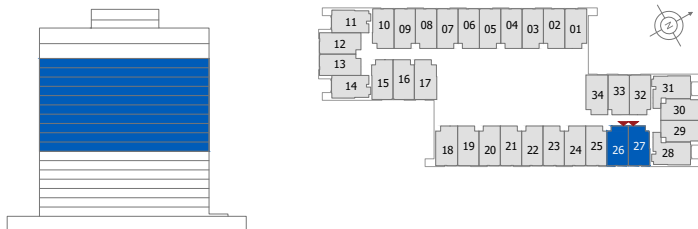
CITY WALK

GUEST ROOM

ROOM 26 & 27 (Interconnecting Rooms)

8TH -17TH (TYPICAL FLOOR PLAN 3)

ROOM 26 AREA	248.86 SQ.FT.	23.12 SQ.M.
ROOM 27 AREA	246.39 SQ.FT.	22.89 SQ.M.
TOTAL AREA	495.25 SQ.FT.	46.01 SQ.M.



DISCLAIMER: All measurements, dimensions, coordinates and drawings given in the Property (Site/Floor) Plans are approximate and provided only for the purpose of illustration, information and general guidance as such drawings are not to scale. All the floor/site plans including concerned plot/room/swimming pool sizes, specifications, locations and orientations shown have been taken from concept designs prior to the actual development/construction and therefore their accuracy in relation to actual construction cannot be confirmed. Hence, we make no guarantee, warranty or representation as to the accuracy and completeness of the Property (Site/Floor) plan information as changes may be made during the development process, without notice. Always refer to latest IFC design available in the sales office for the most accurate representation of all construction details.

R O V E

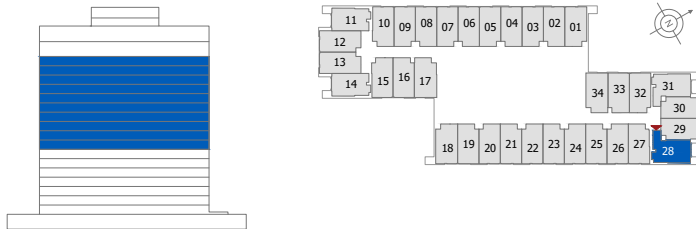
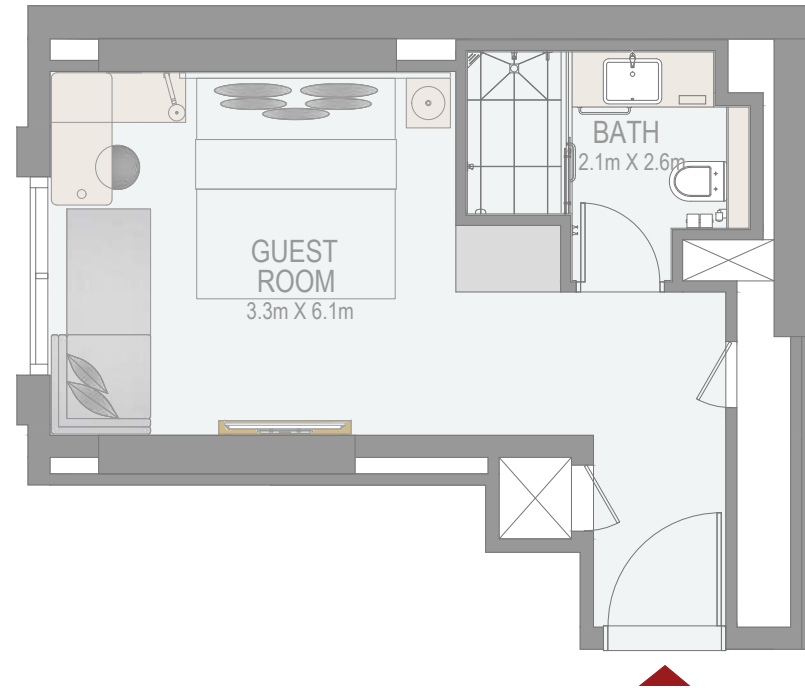
CITY WALK

GUEST ROOM

ROOM 28

8TH -17TH (TYPICAL FLOOR PLAN 3)

ROOM AREA	284.27 SQ.FT.	26.41 SQ.M.
-----------	---------------	-------------



DISCLAIMER: All measurements, dimensions, coordinates and drawings given in the Property (Site/Floor) Plans are approximate and provided only for the purpose of illustration, information and general guidance as such drawings are not to scale. All the floor/site plans including concerned plot/room/swimming pool sizes, specifications, locations and orientations shown have been taken from concept designs prior to the actual development/construction and therefore their accuracy in relation to actual construction cannot be confirmed. Hence, we make no guarantee, warranty or representation as to the accuracy and completeness of the Property (Site/Floor) plan information as changes may be made during the development process, without notice. Always refer to latest IFC design available in the sales office for the most accurate representation of all construction details.

R O V E

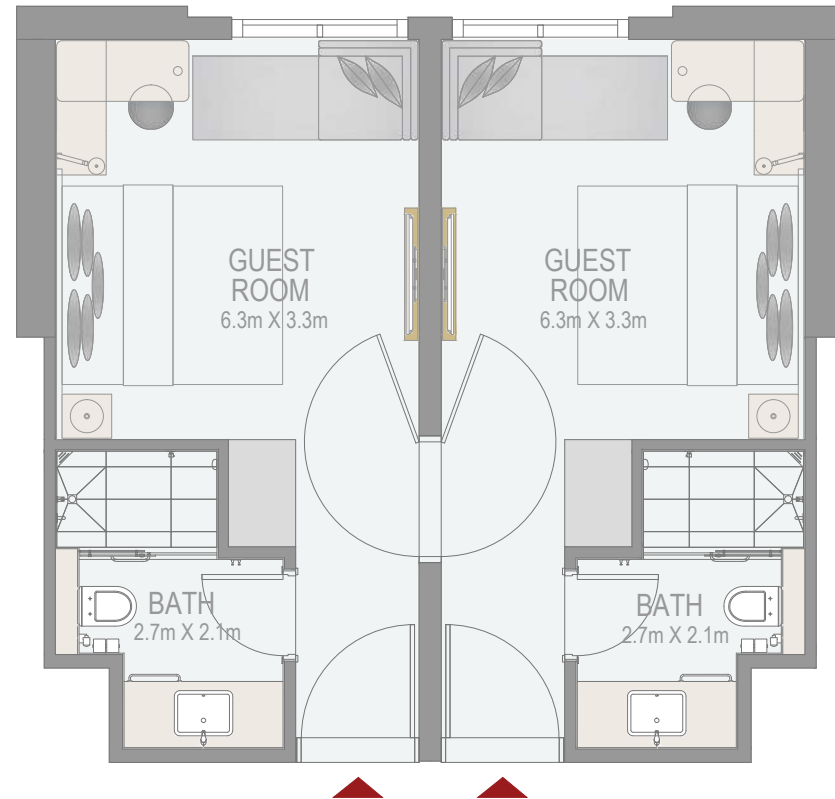
CITY WALK

GUEST ROOM

ROOM 29 & 30 (Interconnecting Rooms)

8TH -17TH (TYPICAL FLOOR PLAN 3)

ROOM 29 AREA	248.75 SQ.FT.	23.11 SQ.M.
ROOM 30 AREA	248.75 SQ.FT.	23.11 SQ.M.
TOTAL AREA	497.51 SQ.FT.	46.22 SQ.M.



DISCLAIMER: All measurements, dimensions, coordinates and drawings given in the Property (Site/Floor) Plans are approximate and provided only for the purpose of illustration, information and general guidance as such drawings are not to scale. All the floor/site plans including concerned plot/room/swimming pool sizes, specifications, locations and orientations shown have been taken from concept designs prior to the actual development/construction and therefore their accuracy in relation to actual construction cannot be confirmed. Hence, we make no guarantee, warranty or representation as to the accuracy and completeness of the Property (Site/Floor) plan information as changes may be made during the development process, without notice. Always refer to latest IFC design available in the sales office for the most accurate representation of all construction details.

R O V E

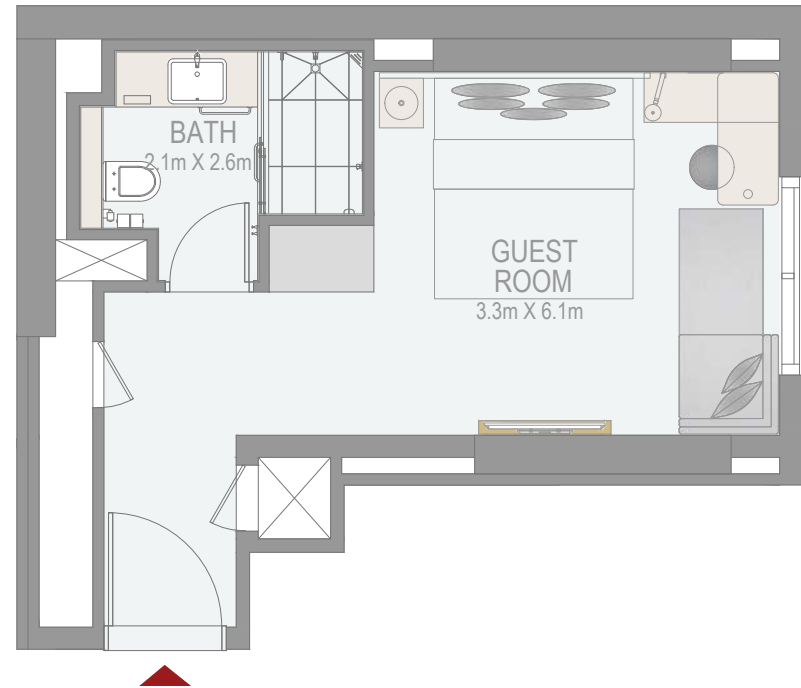
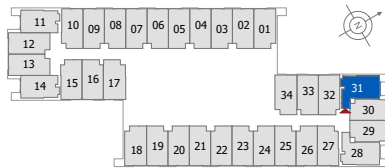
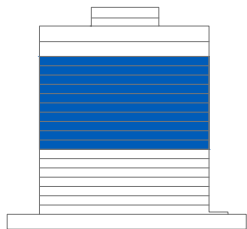
CITY WALK

GUEST ROOM

ROOM 31

8TH -17TH (TYPICAL FLOOR PLAN 3)

ROOM AREA	284.27 SQ.FT.	26.41 SQ.M.
-----------	---------------	-------------



DISCLAIMER: All measurements, dimensions, coordinates and drawings given in the Property (Site/Floor) Plans are approximate and provided only for the purpose of illustration, information and general guidance as such drawings are not to scale. All the floor/site plans including concerned plot/room/swimming pool sizes, specifications, locations and orientations shown have been taken from concept designs prior to the actual development/construction and therefore their accuracy in relation to actual construction cannot be confirmed. Hence, we make no guarantee, warranty or representation as to the accuracy and completeness of the Property (Site/Floor) plan information as changes may be made during the development process, without notice. Always refer to latest IFC design available in the sales office for the most accurate representation of all construction details.

R O V E

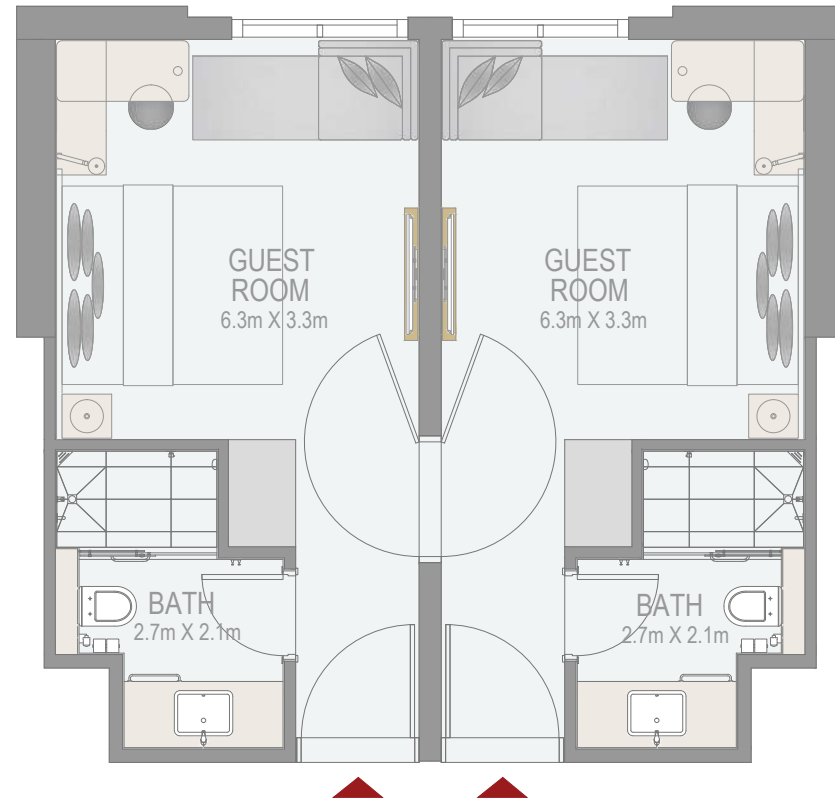
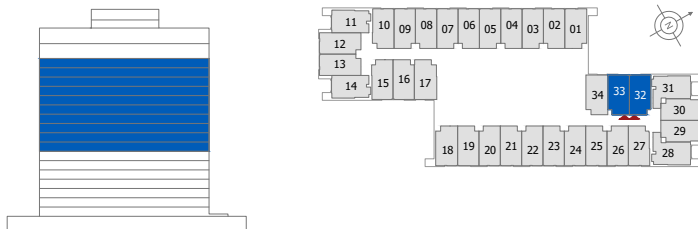
CITY WALK

GUEST ROOM

ROOM 32 & 33 (Interconnecting Rooms)

8TH -17TH (TYPICAL FLOOR PLAN 3)

ROOM 32 AREA	249.51 SQ.FT.	23.18 SQ.M.
ROOM 33 AREA	249.62 SQ.FT.	23.19 SQ.M.
TOTAL AREA	499.12 SQ.FT.	46.37 SQ.M.



DISCLAIMER: All measurements, dimensions, coordinates and drawings given in the Property (Site/Floor) Plans are approximate and provided only for the purpose of illustration, information and general guidance as such drawings are not to scale. All the floor/site plans including concerned plot/room/swimming pool sizes, specifications, locations and orientations shown have been taken from concept designs prior to the actual development/construction and therefore their accuracy in relation to actual construction cannot be confirmed. Hence, we make no guarantee, warranty or representation as to the accuracy and completeness of the Property (Site/Floor) plan information as changes may be made during the development process, without notice. Always refer to latest IFC design available in the sales office for the most accurate representation of all construction details.

R O V E

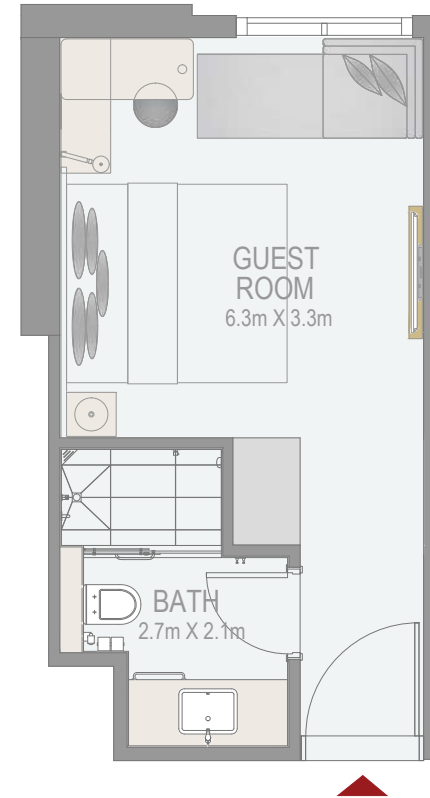
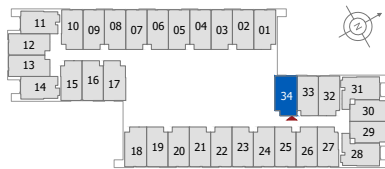
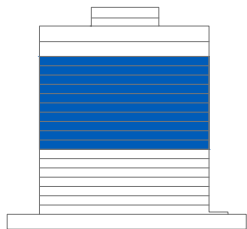
CITY WALK

GUEST ROOM

ROOM 34

8TH -17TH (TYPICAL FLOOR PLAN 3)

ROOM AREA	256.50 SQ.FT.	23.83 SQ.M.
-----------	---------------	-------------



DISCLAIMER: All measurements, dimensions, coordinates and drawings given in the Property (Site/Floor) Plans are approximate and provided only for the purpose of illustration, information and general guidance as such drawings are not to scale. All the floor/site plans including concerned plot/room/swimming pool sizes, specifications, locations and orientations shown have been taken from concept designs prior to the actual development/construction and therefore their accuracy in relation to actual construction cannot be confirmed. Hence, we make no guarantee, warranty or representation as to the accuracy and completeness of the Property (Site/Floor) plan information as changes may be made during the development process, without notice. Always refer to latest IFC design available in the sales office for the most accurate representation of all construction details.