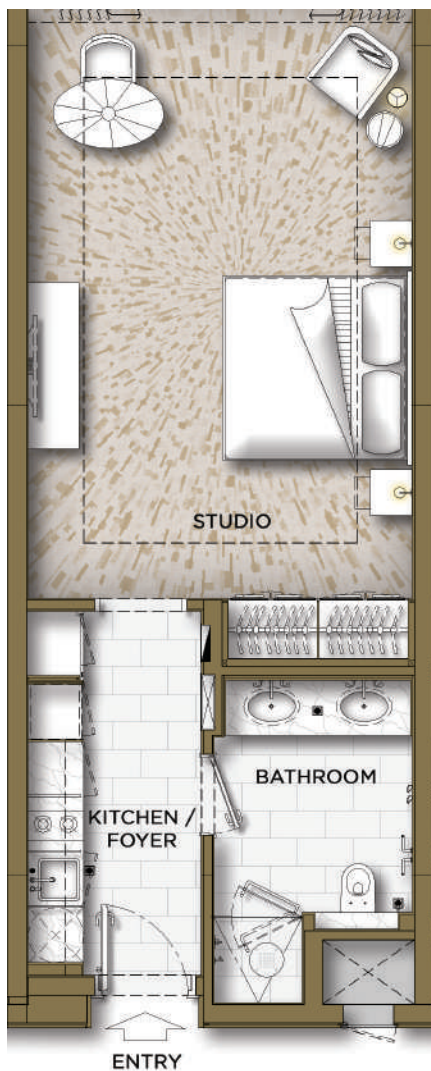




THE PALM TOWER
RESIDENCES

THE FLOORPLANS

Studio

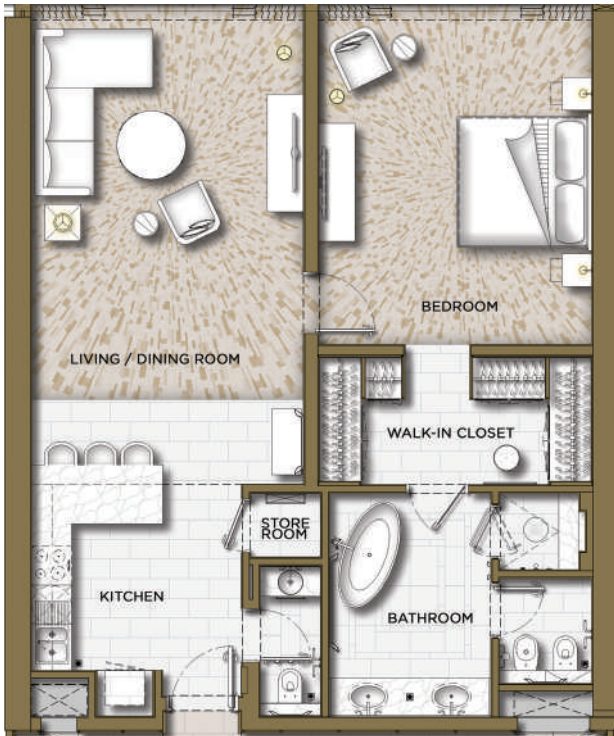


| Bedroom | Built Up Area |
|---------|--------------------------------------|
| Studio | 441 Square Feet - 599.23 Square Feet |

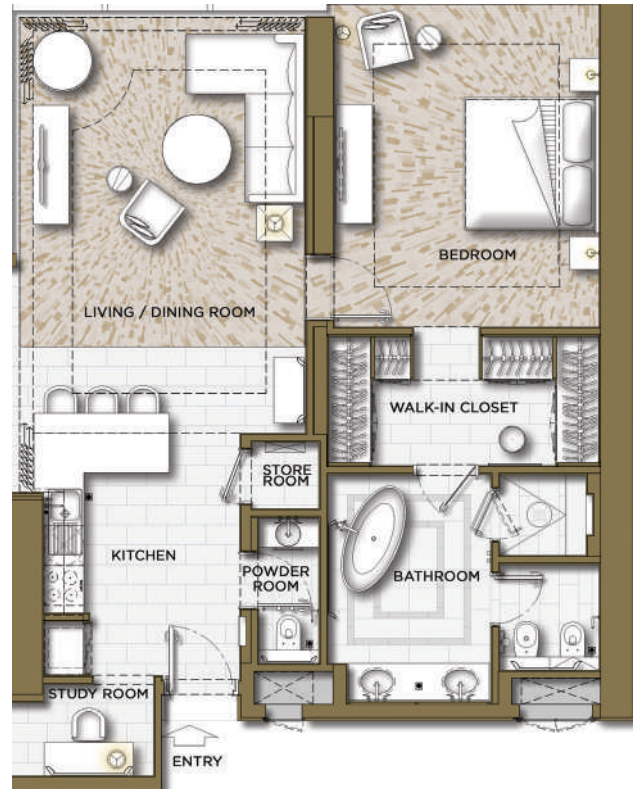
The developer reserves the right to make revisions. All the measurements and drawings are approximate. This information is subject to change without notice. Do not scale drawings. Artistic renderings, landscaping and images are for illustrative purposes only and are subject to change without notice. March 2021.

THE FLOORPLANS

Typical
One Bedroom



Typical Corner
One Bedroom

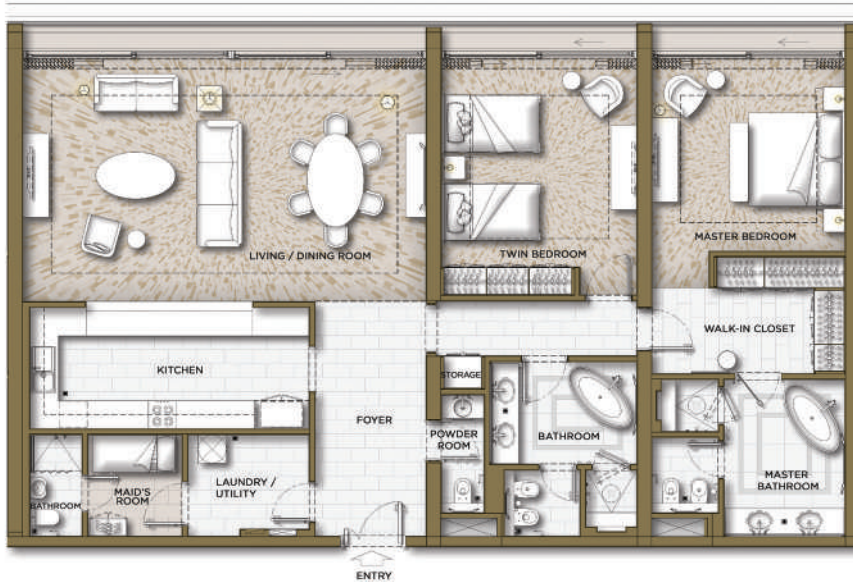


| Bedroom | Built Up Area |
|---------|---------------------------------------|
| 1 BR | 900 Square Feet - 1144.53 Square Feet |

The developer reserves the right to make revisions. All the measurements and drawings are approximate. This information is subject to change without notice. Do not scale drawings. Artistic renderings, landscaping and images are for illustrative purposes only and are subject to change without notice. March 2021.

THE FLOORPLANS

Two Bedroom - Type A



Two Bedroom - Type B



| Bedroom | Built Up Area |
|---------|-------------------------------------|
| 2 BR | 1842 Square Feet - 2118 Square Feet |

The developer reserves the right to make revisions. All the measurements and drawings are approximate. This information is subject to change without notice. Do not scale drawings. Artistic renderings, landscaping and images are for illustrative purposes only and are subject to change without notice. March 2021.

THE FLOORPLANS

Three Bedroom - Type A

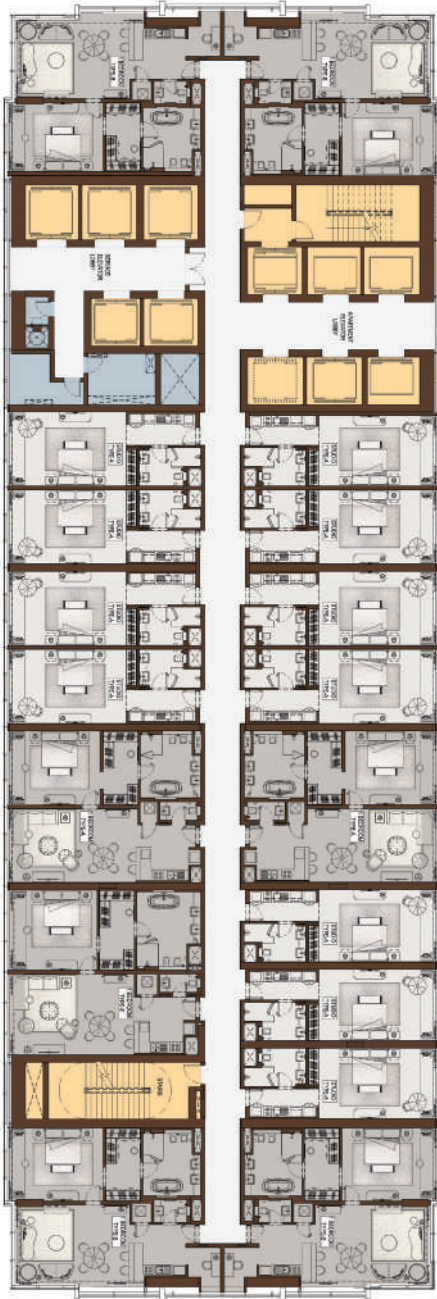


| Bedroom | Built Up Area |
|---------|------------------|
| 3 BR | 2589 Square Feet |

The developer reserves the right to make revisions. All the measurements and drawings are approximate. This information is subject to change without notice. Do not scale drawings. Artistic renderings, landscaping and images are for illustrative purposes only and are subject to change without notice. March 2021.

SAMPLE KEY PLANS

ATLANTIS VIEW



WEST - DUBAI MARINA VIEW

EAST - BURJ AL ARAB VIEW

CITY VIEW

ATLANTIS VIEW



WEST - DUBAI MARINA VIEW

EAST - BURJ AL ARAB VIEW

CITY VIEW

- | | | | |
|--|------------------|---|---------------------|
|  | STUDIO/2 BEDROOM |  | 1 BEDROOM/3 BEDROOM |
|  | COMMON AREA |  | STAIRS / ELEVATORS |