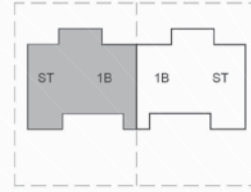


الغدير
alghadeer

Studio+1 Bedroom Maisonette



Key Plan

STUDIO MAISONETTE AREA GF: 37 m²
 MAISONETTE AREA FF: 37 m²

1 BED MAISONETTE AREA GF: 55 m²
 MAISONETTE AREA FF: 56 m²

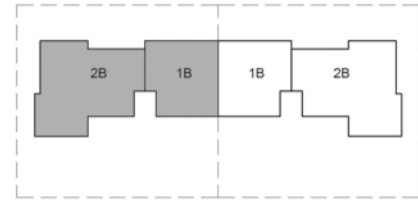


Ground Floor



First Floor

1+2 Bedroom Maisonette



Key Plan

- 1 BED MAISONETTE AREA GF: 55 m²
MAISONETTE AREA FF: 68 m²
- 2 BED MAISONETTE AREA GF: 86 m²
MAISONETTE AREA FF: 98 m²



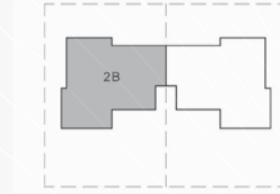
Ground Floor



First Floor

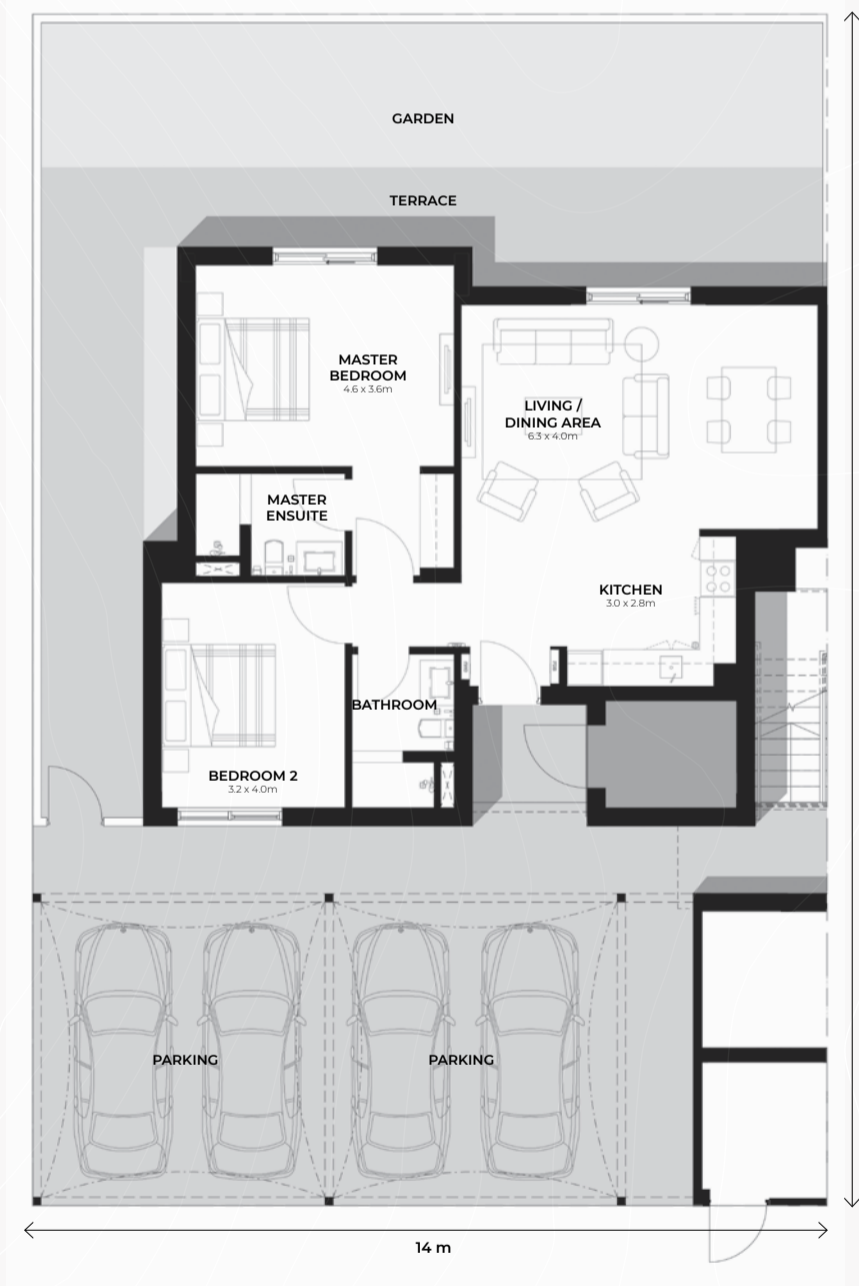
DISCLAIMER: Note that this floor plan was produced prior to the completion of construction and is indicative only and not to scale. Changes may be made during the development and areas, fittings, finishes and specifications are subject to change without notice in accordance with the provision of the contract of sale. The furniture depicted is not included with any sale and should not be taken to indicate the final positions of power points, TV connections and the like. Prospective purchasers must rely on their own enquiries. Bulkheads necessary for services and structure are not depicted.

2 Bedroom Maisonette



Key Plan

MAISONETTE AREA GF: 85 m²
MAISONETTE AREA FF: 96 m²

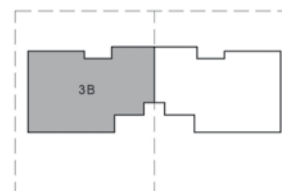


Ground Floor



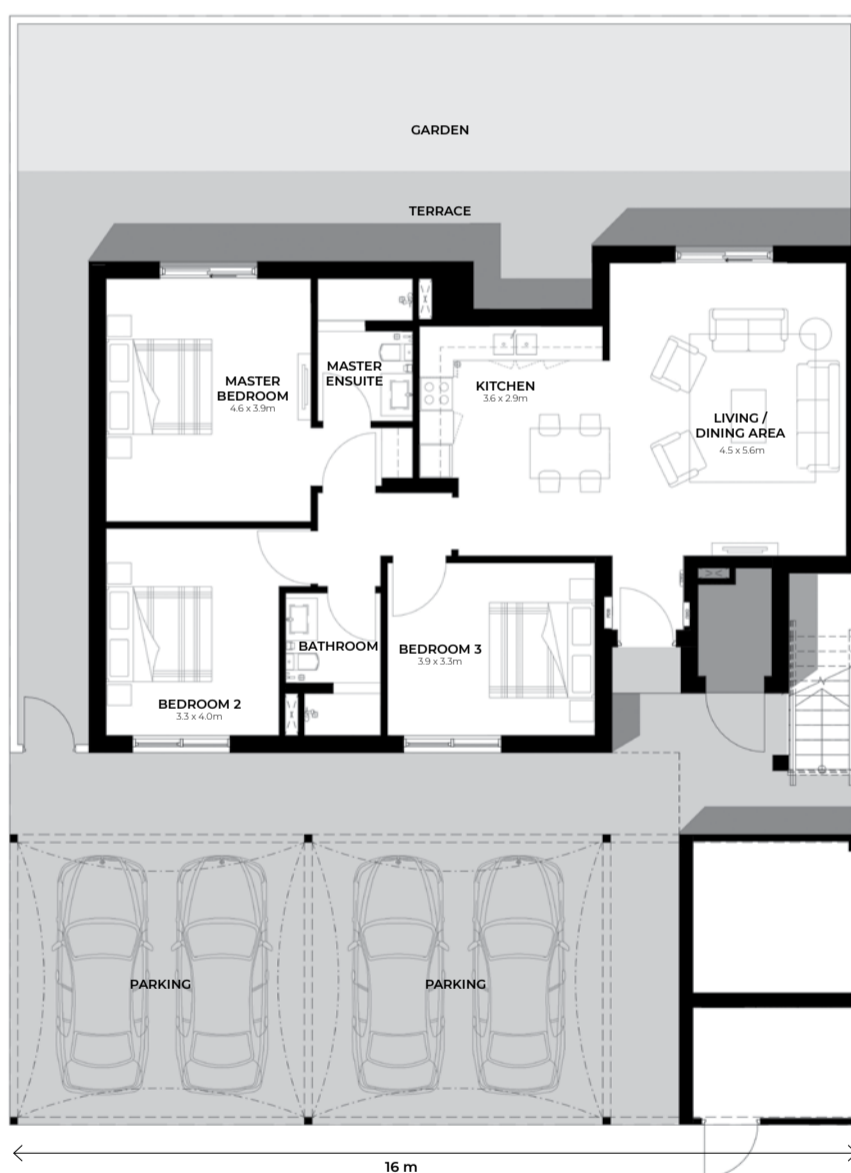
First Floor

3 Bedroom Maisonette

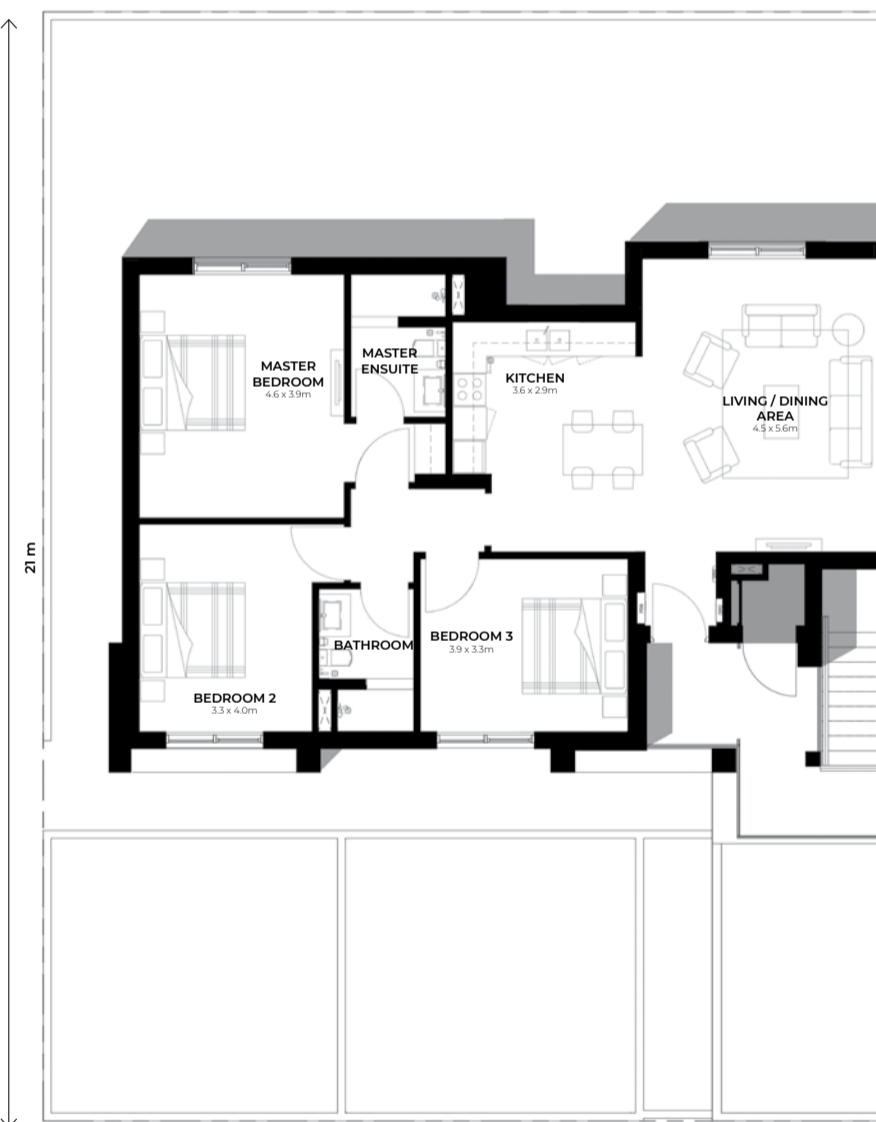


Key Plan

MAISONETTE AREA GF: 106 m²
MAISONETTE AREA FF: 106 m²



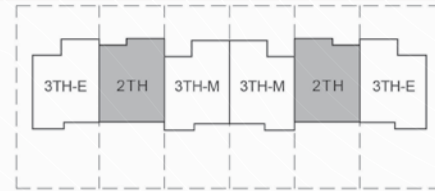
Ground Floor



First Floor

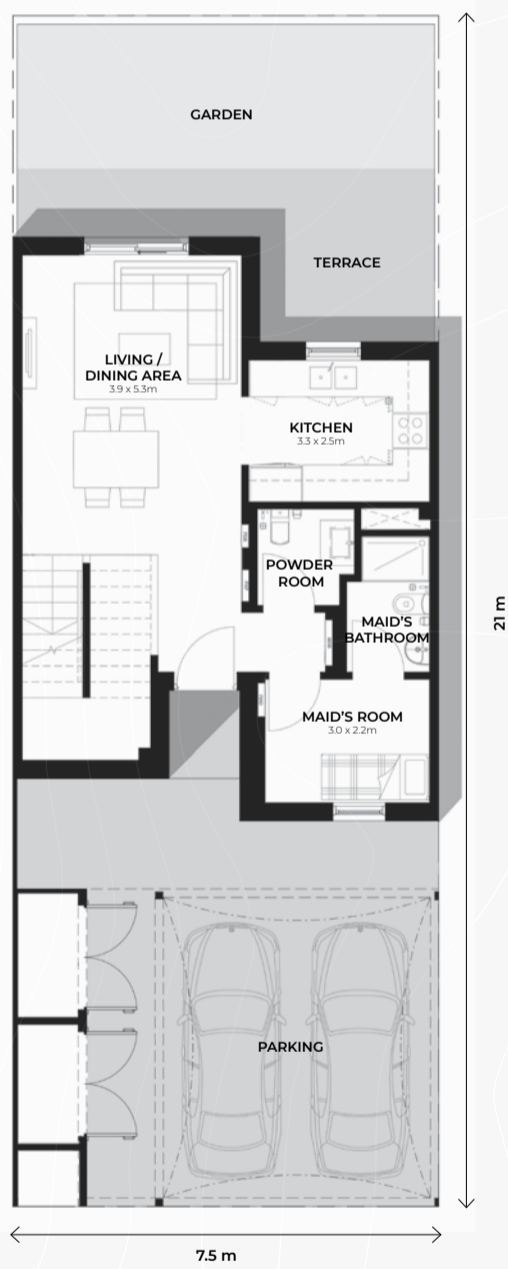
DISCLAIMER: Note that this floor plan was produced prior to the completion of construction and is indicative only and not to scale. Changes may be made during the development and areas, fittings, finishes and specifications are subject to change without notice in accordance with the provision of the contract of sale. The furniture depicted is not included with any sale and should not be taken to indicate the final positions of power points, TV connections and the like. Prospective purchasers must rely on their own enquiries. Bulkheads necessary for services and structure are not depicted.

2 Bedroom Townhouse

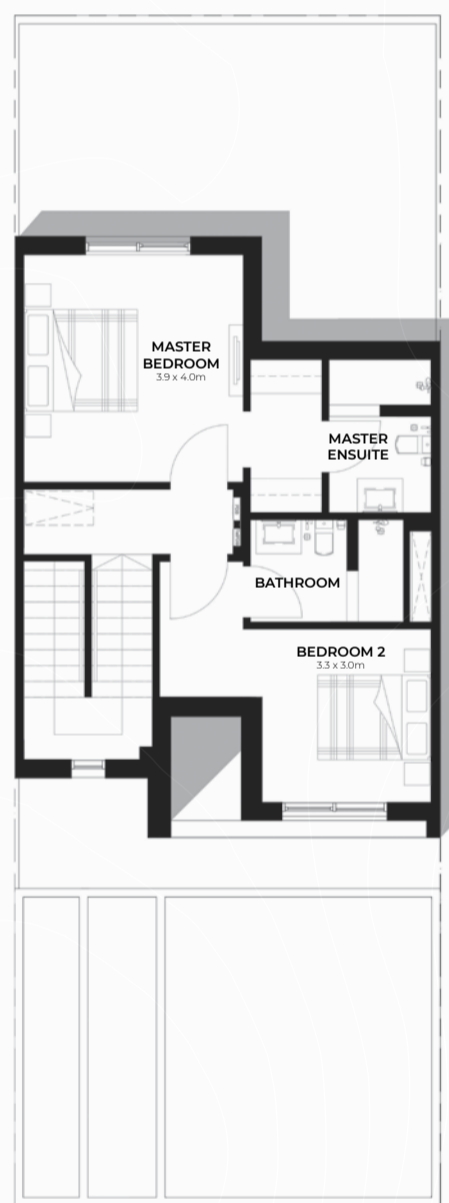


Key Plan

TOWNHOUSE AREA: 125 m²

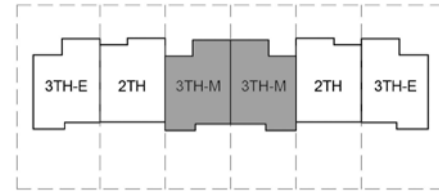


Ground Floor



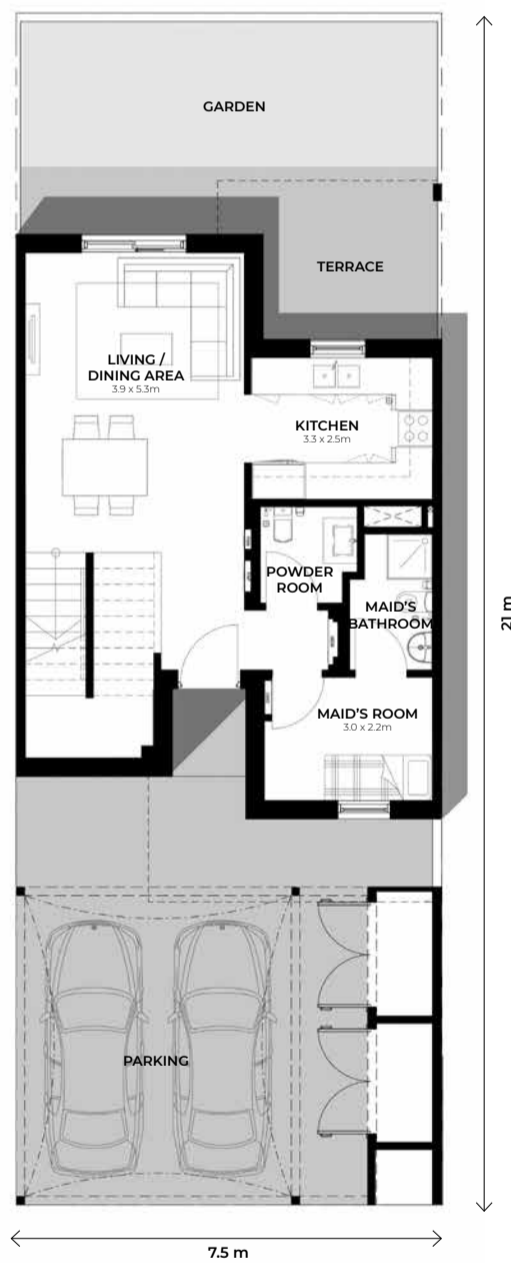
First Floor

3 Bedroom Townhouse (Mid Unit)



Key Plan

TOWNHOUSE AREA: 152 m²



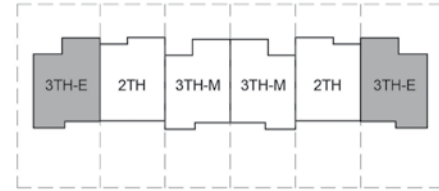
Ground Floor



First Floor

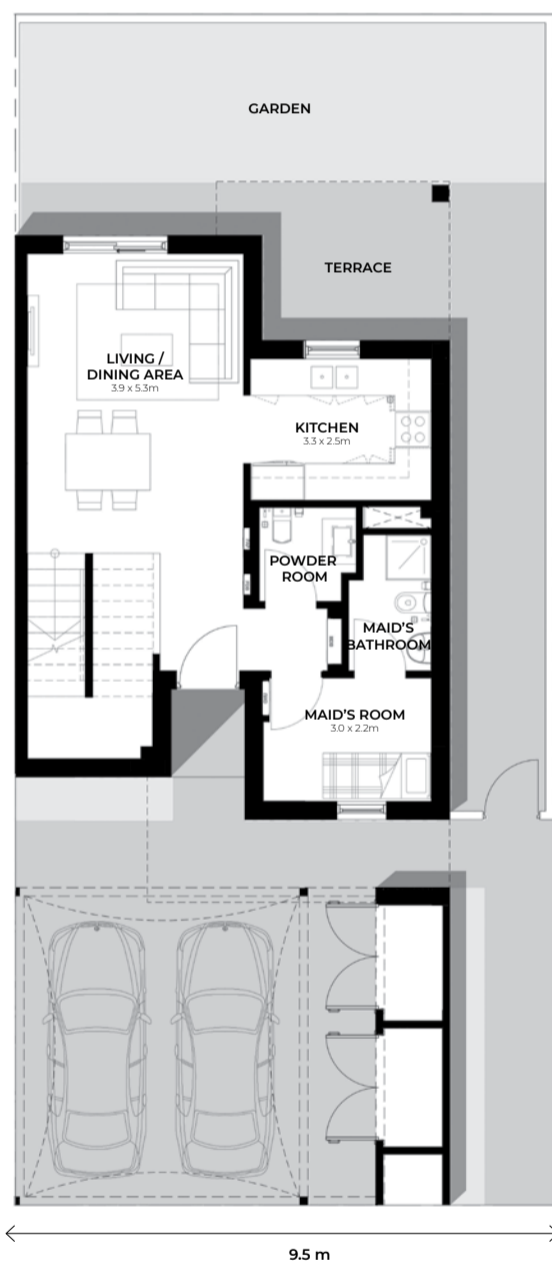
DISCLAIMER: Note that this floor plan was produced prior to the completion of construction and is indicative only and not to scale. Changes may be made during the development and areas, fittings, finishes and specifications are subject to change without notice in accordance with the provision of the contract of sale. The furniture depicted is not included with any sale and should not be taken to indicate the final positions of power points, TV connections and the like. Prospective purchasers must rely on their own enquiries. Bulkheads necessary for services and structure are not depicted.

3 Bedroom Townhouse (End Unit)

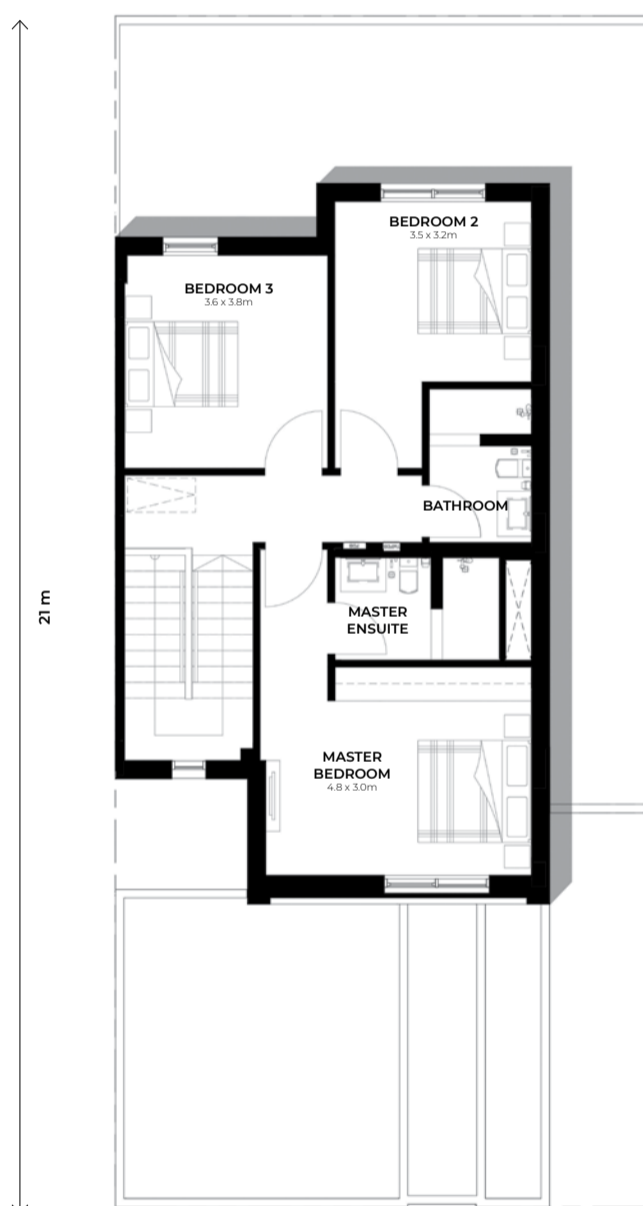


Key Plan

TOWNHOUSE AREA: 155 m²



Ground Floor

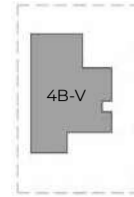


First Floor

DISCLAIMER: Note that this floor plan was produced prior to the completion of construction and is indicative only and not to scale. Changes may be made during the development and areas, fittings, finishes and specifications are subject to change without notice in accordance with the provision of the contract of sale. The furniture depicted is not included with any sale and should not be taken to indicate the final positions of power points, TV connections and the like. Prospective purchasers must rely on their own enquiries. Bulkheads necessary for services and structure are not depicted.

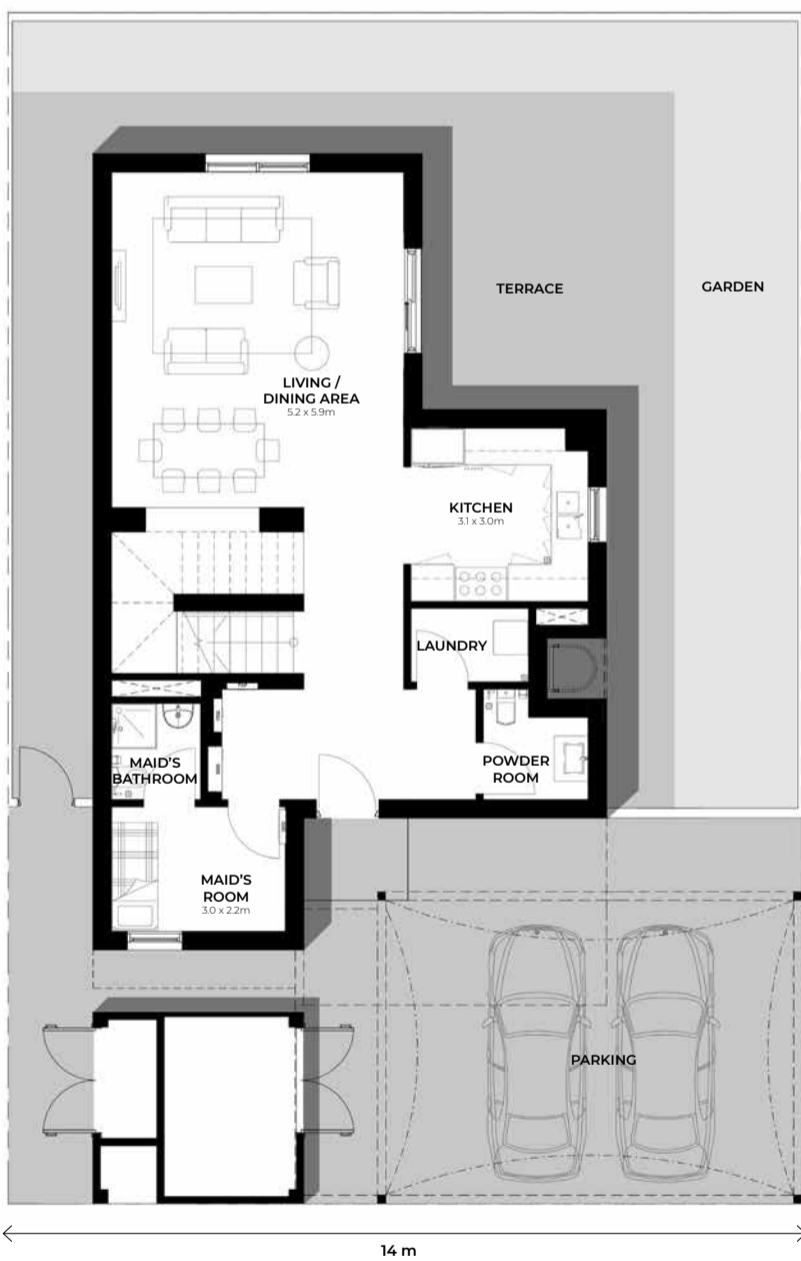
4 Bedroom Villa

(Detached)

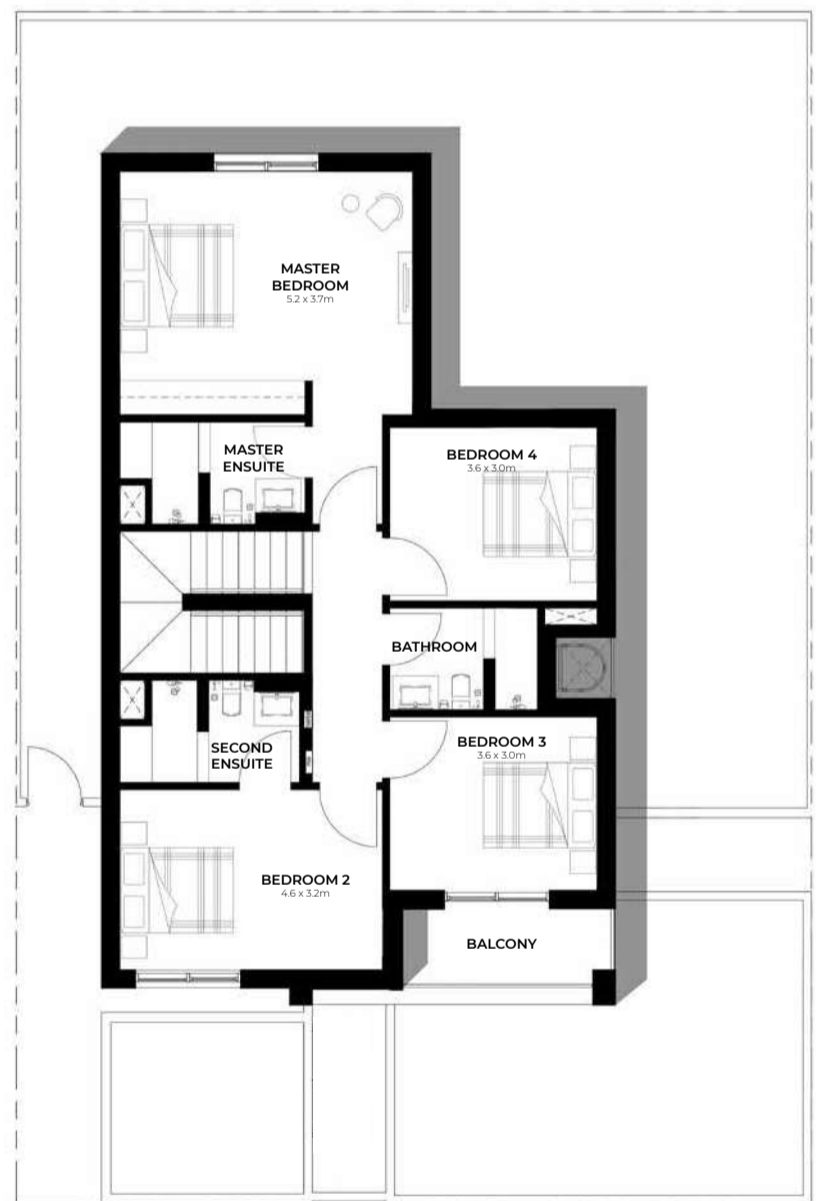


Key Plan

VILLA AREA: 206 m²



Ground Floor



First Floor

DISCLAIMER: Note that this floor plan was produced prior to the completion of construction and is indicative only and not to scale. Changes may be made during the development and areas, fittings, finishes and specifications are subject to change without notice in accordance with the provision of the contract of sale. The furniture depicted is not included with any sale and should not be taken to indicate the final positions of power points, TV connections and the like. Prospective purchasers must rely on their own enquiries. Bulkheads necessary for services and structure are not depicted.



CONTACT US

Toll-Free: 800 37373

Hotline : +971 52 754 3244

Email: sales@drehomes.com

Visit Us For More Info:-

<https://drehomes.com/property/aldar-alghadeer-at-al-ghadeer/>