



SENSIA

FLOOR PLANS

BEYOND

SENSIA

1 BEDROOM TYPE A (TYPICAL)

Internal Area	690 - 769	SQ FT
External Area	66 - 67	SQ FT
TOTAL AREA	756 - 835	SQ FT

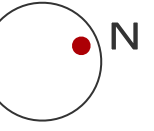
KEY PLAN



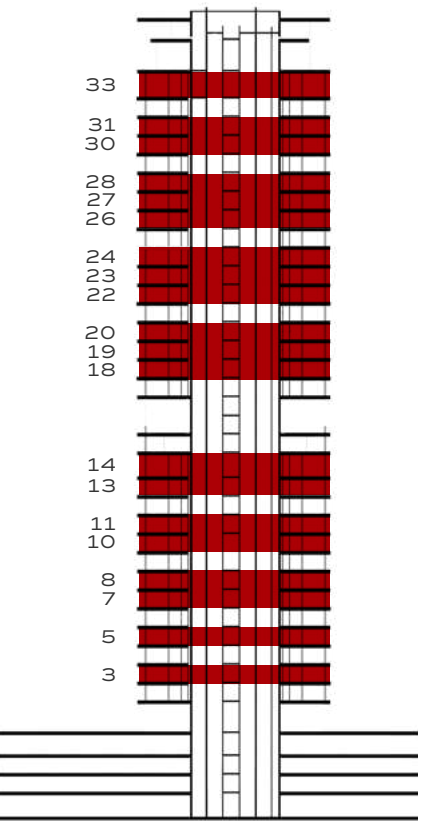
FLOORS
3, 5, 7, 8, 10, 11, 13, 14, 18-20,
22-24, 26-28, 30, 31, 33

UNITS
02, 03, 05, 06

BEYOND



KEY SECTION



The renderings and visualisations in this brochure are for illustrative and marketing purposes only. While the information provided is accurate and reliable at the time of publication, it is important to note that only the information included in the final Sales and Purchase Agreement will carry legal significance.

SENSIA

1 BEDROOM TYPE A (FEATURE)

Internal Area	690 - 769	SQ FT
External Area	71 - 116	SQ FT
TOTAL AREA	761 - 871	SQ FT

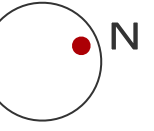
KEY PLAN



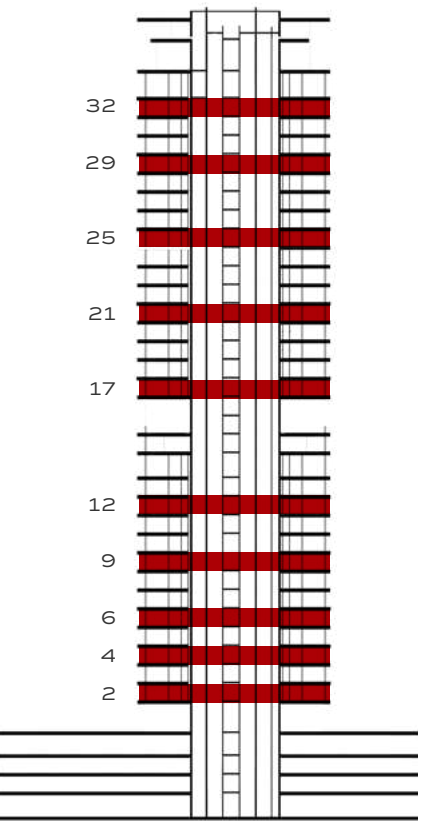
FLOORS
2, 4, 6, 9, 12, 17, 21, 25, 29, 32

UNITS
02, 03, 05, 06

BEYOND



KEY SECTION



The renderings and visualisations in this brochure are for illustrative and marketing purposes only. While the information provided is accurate and reliable at the time of publication, it is important to note that only the information included in the final Sales and Purchase Agreement will carry legal significance.

SENSIA

2 BEDROOM TYPE A (TYPICAL)

Internal Area	940	SQ FT
External Area	202	SQ FT
TOTAL AREA	1,142	SQ FT

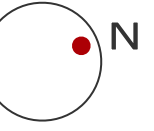
KEY PLAN



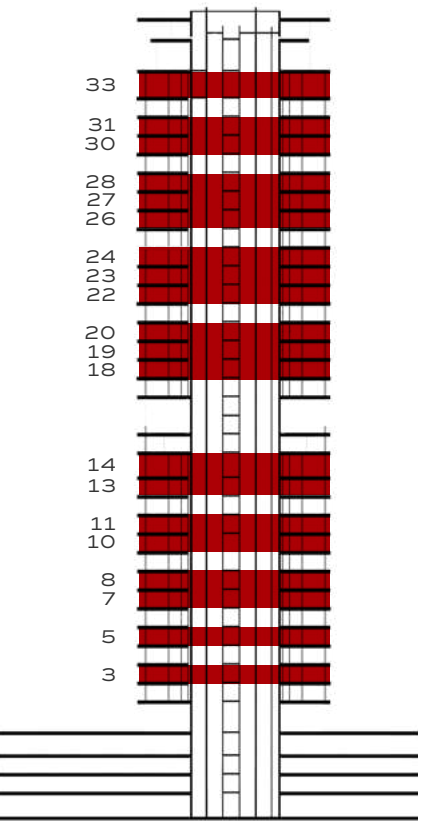
FLOORS
3, 5, 7, 8, 10, 11, 13, 14, 18-20,
22-24, 26-28, 30, 31, 33

UNITS
04

BEYOND



KEY SECTION



The renderings and visualisations in this brochure are for illustrative and marketing purposes only. While the information provided is accurate and reliable at the time of publication, it is important to note that only the information included in the final Sales and Purchase Agreement will carry legal significance.

SENSIA

2 BEDROOM TYPE A (FEATURE)

Internal Area	940	SQ FT
External Area	272 - 478	SQ FT
TOTAL AREA	1,211 - 1,417	SQ FT

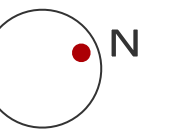
KEY PLAN



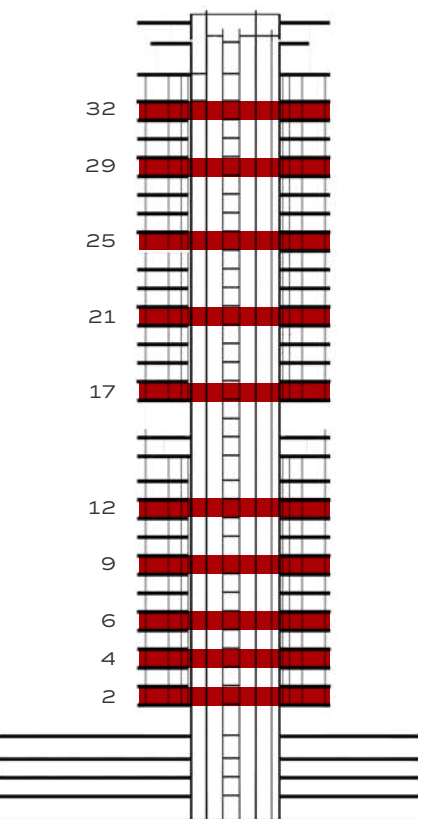
FLOORS
2, 4, 6, 9, 12, 17, 21, 25, 29, 32

UNITS
04

BEYOND



KEY SECTION



The renderings and visualisations in this brochure are for illustrative and marketing purposes only. While the information provided is accurate and reliable at the time of publication, it is important to note that only the information included in the final Sales and Purchase Agreement will carry legal significance.

SENSIA

2 BEDROOM TYPE B (TYPICAL)

Internal Area	1,135 - 1,159	SQ FT
External Area	113 - 258	SQ FT
TOTAL AREA	1,272 - 1,411	SQ FT

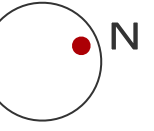
KEY PLAN



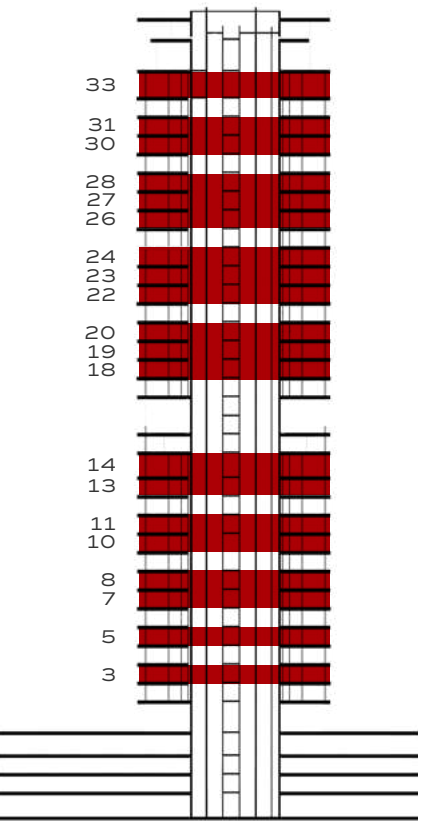
FLOORS
3, 5, 7, 8, 10, 11, 13, 14, 18-20,
22-24, 26-28, 30, 31, 33

UNITS
01, 07, 08

BEYOND



KEY SECTION



The renderings and visualisations in this brochure are for illustrative and marketing purposes only. While the information provided is accurate and reliable at the time of publication, it is important to note that only the information included in the final Sales and Purchase Agreement will carry legal significance.

SENSIA

2 BEDROOM TYPE B (FEATURE)

Internal Area	1,135 - 1,159	SQ FT
External Area	165 - 597	SQ FT
TOTAL AREA	1,325 - 1,732	SQ FT

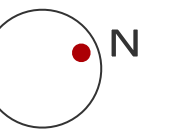
KEY PLAN



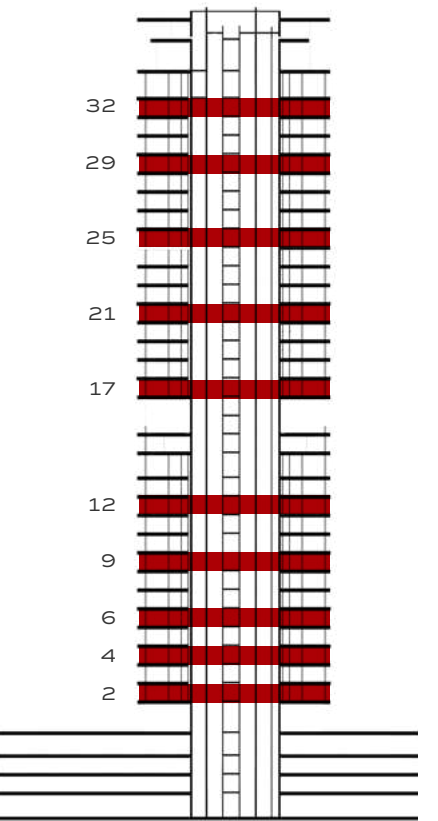
FLOORS
2, 4, 6, 9, 12, 17, 21, 25, 29, 32

UNITS
01, 07, 08

BEYOND



KEY SECTION



The renderings and visualisations in this brochure are for illustrative and marketing purposes only. While the information provided is accurate and reliable at the time of publication, it is important to note that only the information included in the final Sales and Purchase Agreement will carry legal significance.

SENSIA

3 BEDROOM TYPE A (TYPICAL)

Internal Area	1,860	SQ FT
External Area	346	SQ FT
TOTAL AREA	2,207	SQ FT

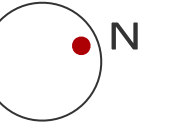
KEY PLAN



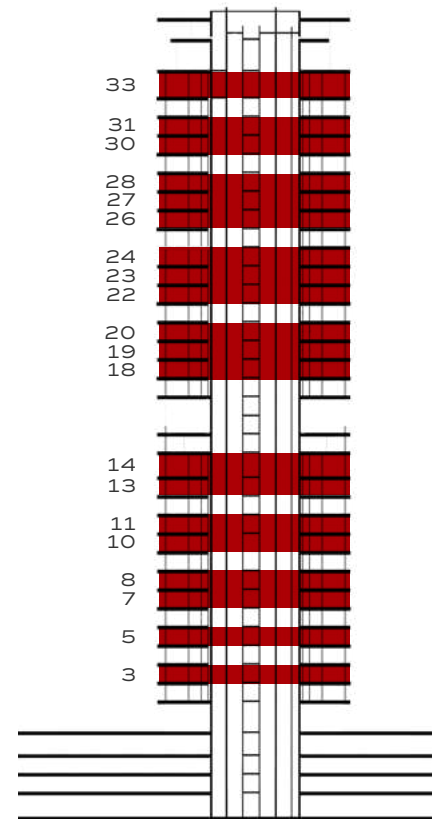
FLOORS
3, 5, 7, 8, 10, 11, 13, 14, 18-20,
22-24, 26-28, 30, 31, 33

UNITS
09

BEYOND



KEY SECTION



The renderings and visualisations in this brochure are for illustrative and marketing purposes only. While the information provided is accurate and reliable at the time of publication, it is important to note that only the information included in the final Sales and Purchase Agreement will carry legal significance.

SENSIA

3 BEDROOM TYPE A (FEATURE)

Internal Area	1,860	SQ FT
External Area	673 - 802	SQ FT
TOTAL AREA	2,533 - 2,662	SQ FT

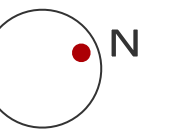
KEY PLAN



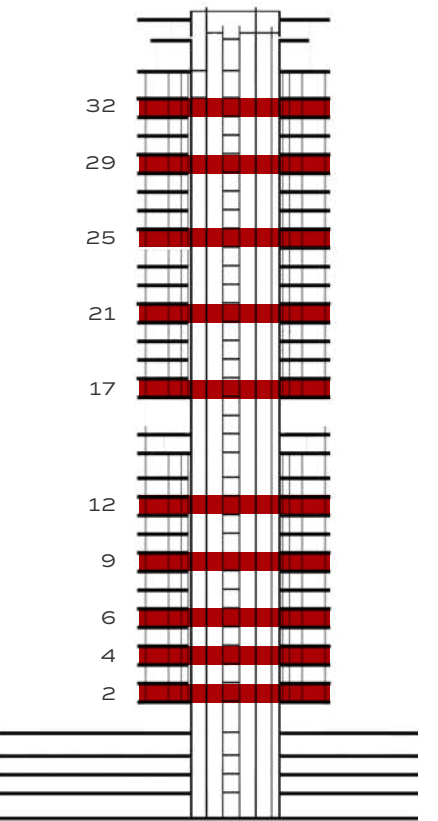
FLOORS
2, 4, 6, 9, 12, 17, 21, 25, 29, 32

UNITS
09

BEYOND



KEY SECTION



The renderings and visualisations in this brochure are for illustrative and marketing purposes only. While the information provided is accurate and reliable at the time of publication, it is important to note that only the information included in the final Sales and Purchase Agreement will carry legal significance.

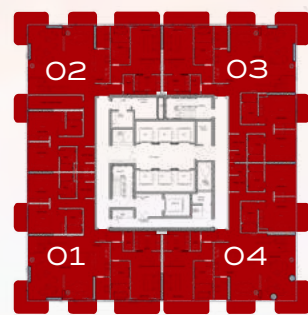
SENSIA

SIGNATURE

3 BEDROOM

Internal Area	2,354 - 2,563	SQ FT
External Area	1,325 - 1,629	SQ FT
TOTAL AREA	3,754 - 4,078	SQ FT

KEY PLAN



LOWER FLOOR
15



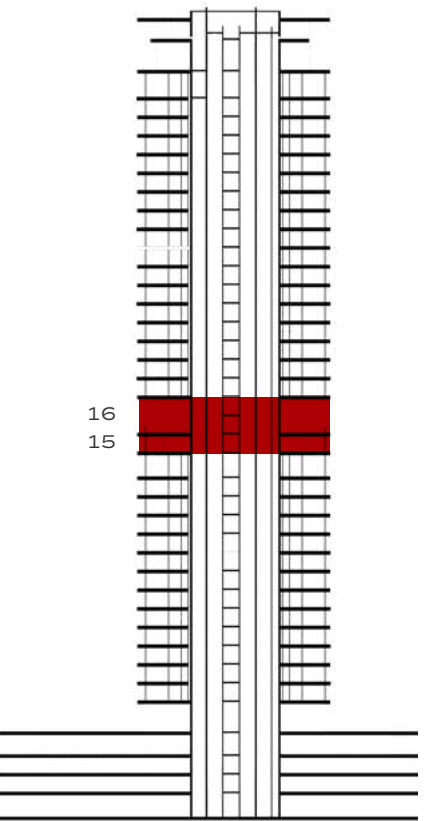
UPPER FLOOR
16

BEYOND



The renderings and visualisations in this brochure are for illustrative and marketing purposes only. While the information provided is accurate and reliable at the time of publication, it is important to note that only the information included in the final Sales and Purchase Agreement will carry legal significance.

KEY SECTION

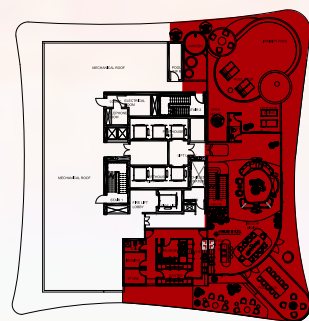


SENSIA

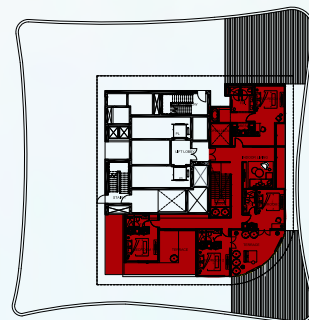
PENTHOUSE

Internal Area	4,663	SQ FT
External Area	4,463	SQ FT
TOTAL AREA	9,126	SQ FT

KEY PLAN



LOWER FLOOR
34

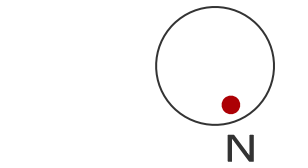


UPPER FLOOR
35

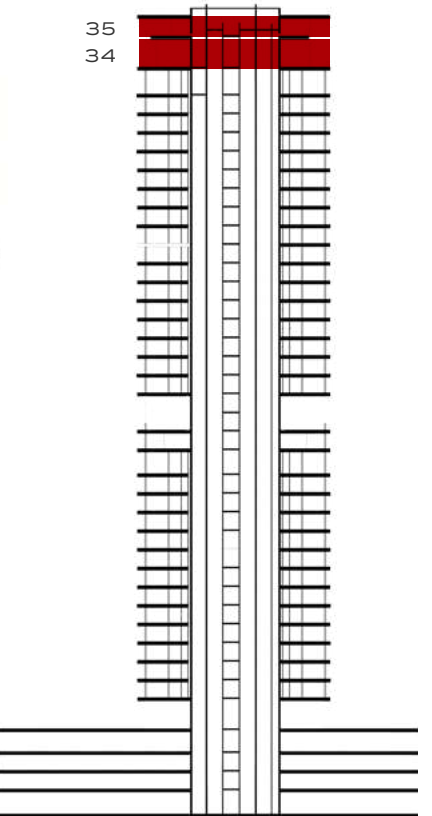
BEYOND



LOWER LEVEL



KEY SECTION



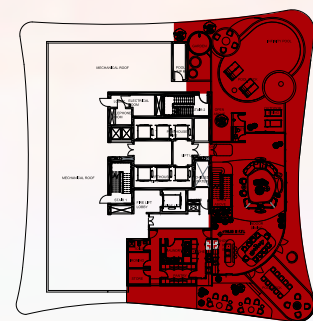
The renderings and visualisations in this brochure are for illustrative and marketing purposes only. While the information provided is accurate and reliable at the time of publication, it is important to note that only the information included in the final Sales and Purchase Agreement will carry legal significance.

SENSIA

PENTHOUSE

Internal Area	4,663	SQ FT
External Area	4,463	SQ FT
TOTAL AREA	9,126	SQ FT

KEY PLAN



LOWER FLOOR
34



UPPER FLOOR
35

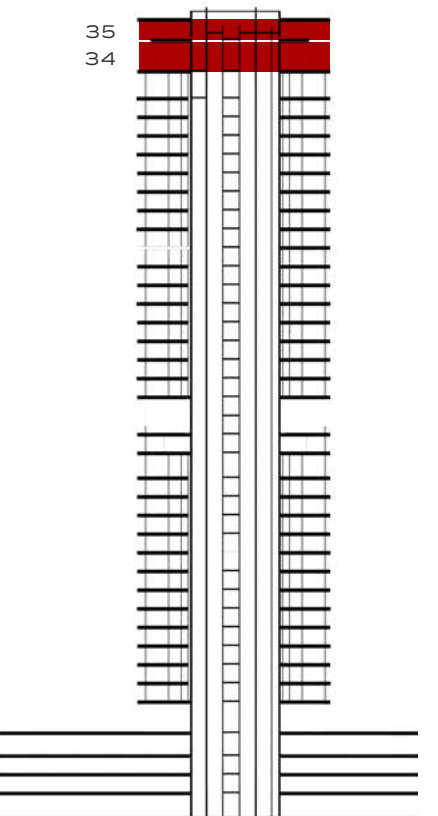
BEYOND



UPPER LEVEL



KEY SECTION



The renderings and visualisations in this brochure are for illustrative and marketing purposes only. While the information provided is accurate and reliable at the time of publication, it is important to note that only the information included in the final Sales and Purchase Agreement will carry legal significance.

The background features a dynamic, abstract composition. On the left, a series of overlapping, wavy ribbons in shades of red and orange flow from the top towards the bottom. These ribbons have a textured, almost woven appearance. The right side of the image is dominated by a bright, glowing light source, likely a sun or moon, which creates a soft, warm gradient of orange and yellow light that fades into a pale blue at the top. The overall effect is one of movement and energy.

BEYOND

BEYONDDEVELOPMENTS.AE