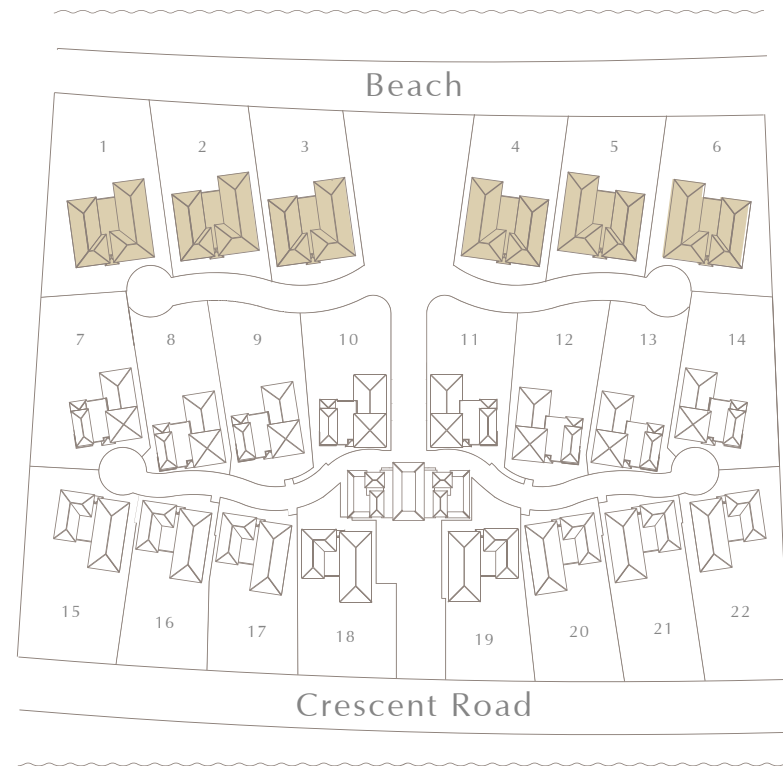


FLOORPLANS

SAPPHIRE

(BUA)	Range (SQM)	Range (SQF)
Ground floor	570	6 142
First floor	559	6 020
Total	1 129	12 162
Plot area	1 757 – 2 415	18 916 – 25 996

Ensuite bedrooms 7



EMERALD

SAPPHIRE

SAPPHIRE

Ground floor



SPACE	SQM	SQF
Ground Floor Area	570	6 142

* Floorplans and built-up area of Villa 2 are provided as an example of Sapphire type villas.



SAPPHIRE

First floor



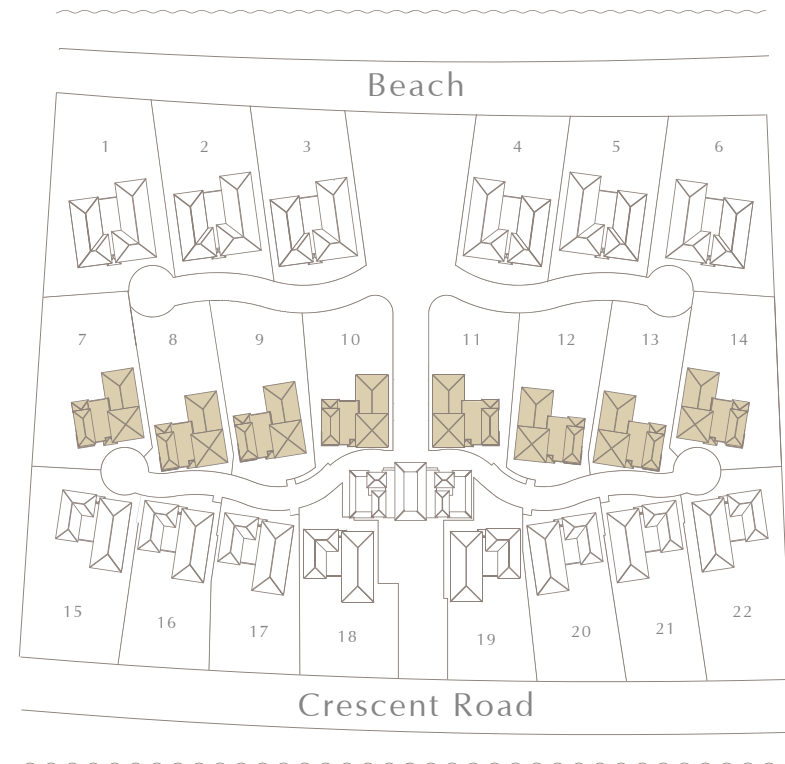
SPACE	SQM	SQF
First Floor Area	559	6 020

* Floorplans and built-up area of Villa 2 are provided as an example of Sapphire type villas.



RUBY

(BUA)	Range (SQM)	Range (SQF)
Basement floor	125 – 205	1 346 – 2 204
Ground floor	385 – 444	4 151 – 4 782
First floor	376 – 434	4 050 – 4 673
Deck floor	140 – 145	1 511 – 1 563
Total	902 – 1 228	9 713 – 13 222
<hr/>		
Plot area	1 448 – 1 938	15 587 – 20 860
<hr/>		
Ensuite bedrooms	7	



EMERALD

SAPPHIRE

RUBY

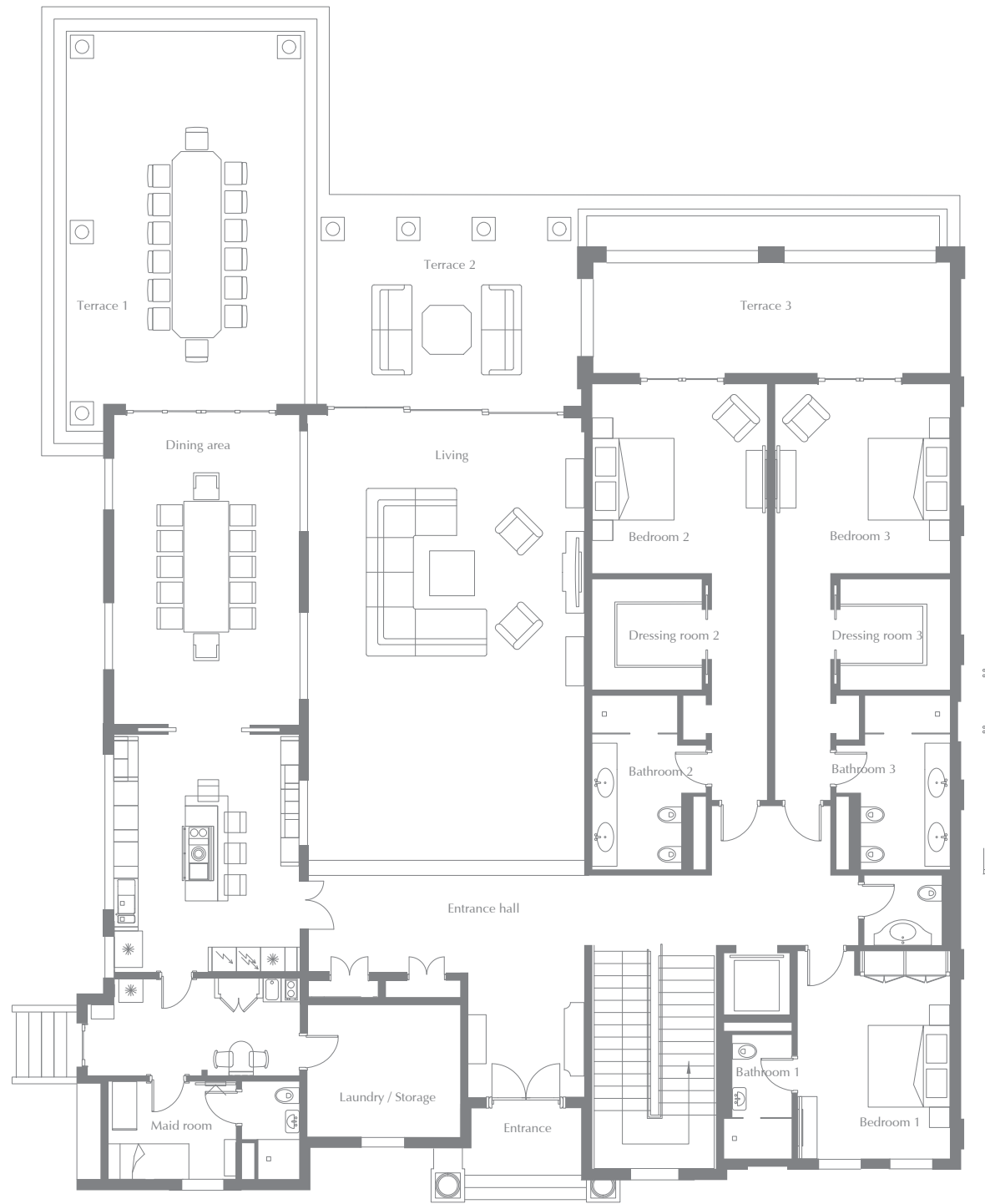
Type A

RUBY Type A



SPACE	SQM	SQF
Ground Floor Area	385	4 151

* Floorplans and built-up area of Villa 7 are provided as an example of Ruby type A villas.

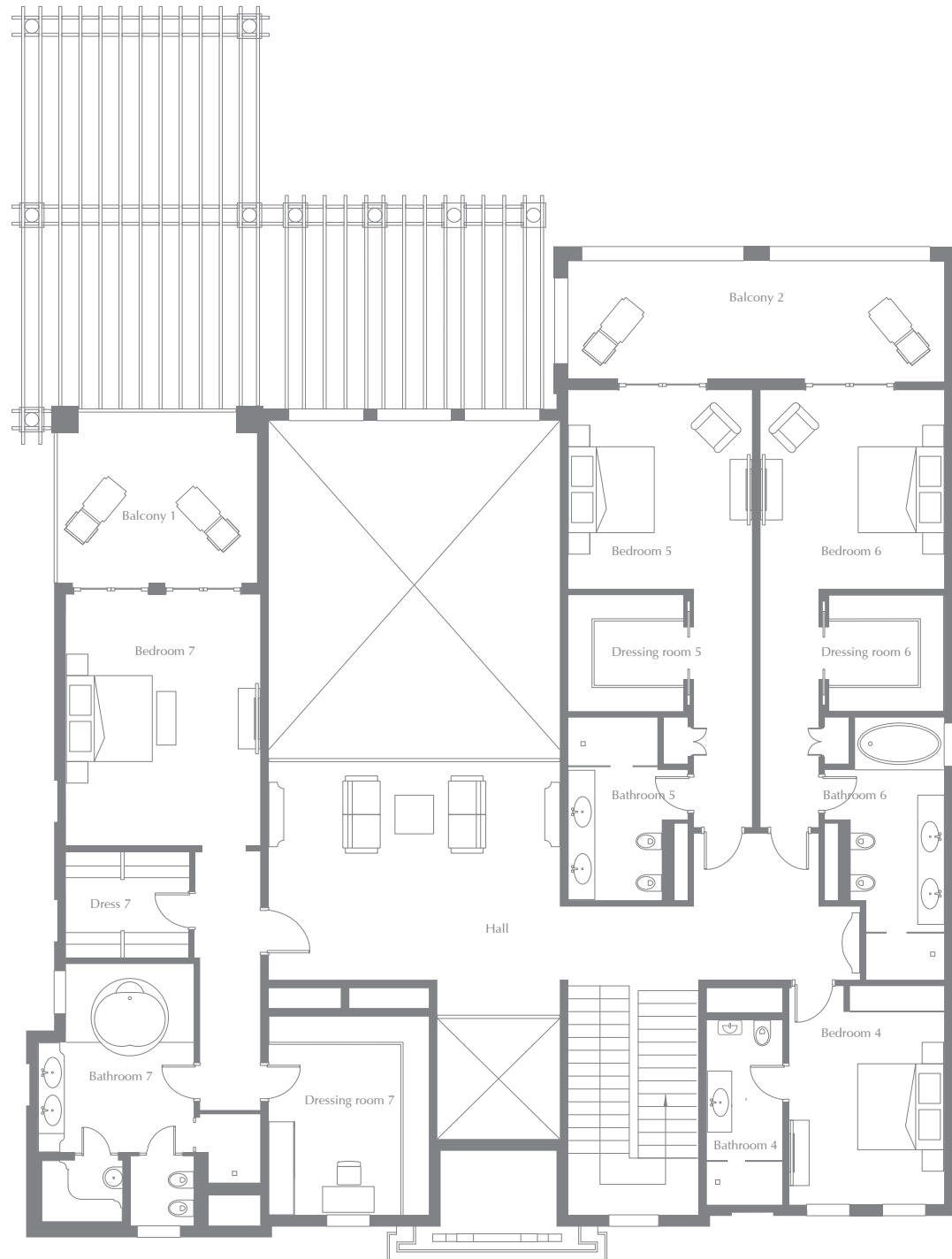


RUBY Type A



SPACE	SQM	SQF
First Floor Area	376	4 050

* Floorplans and built-up area of Villa 7 are provided as an example of Ruby type A villas.

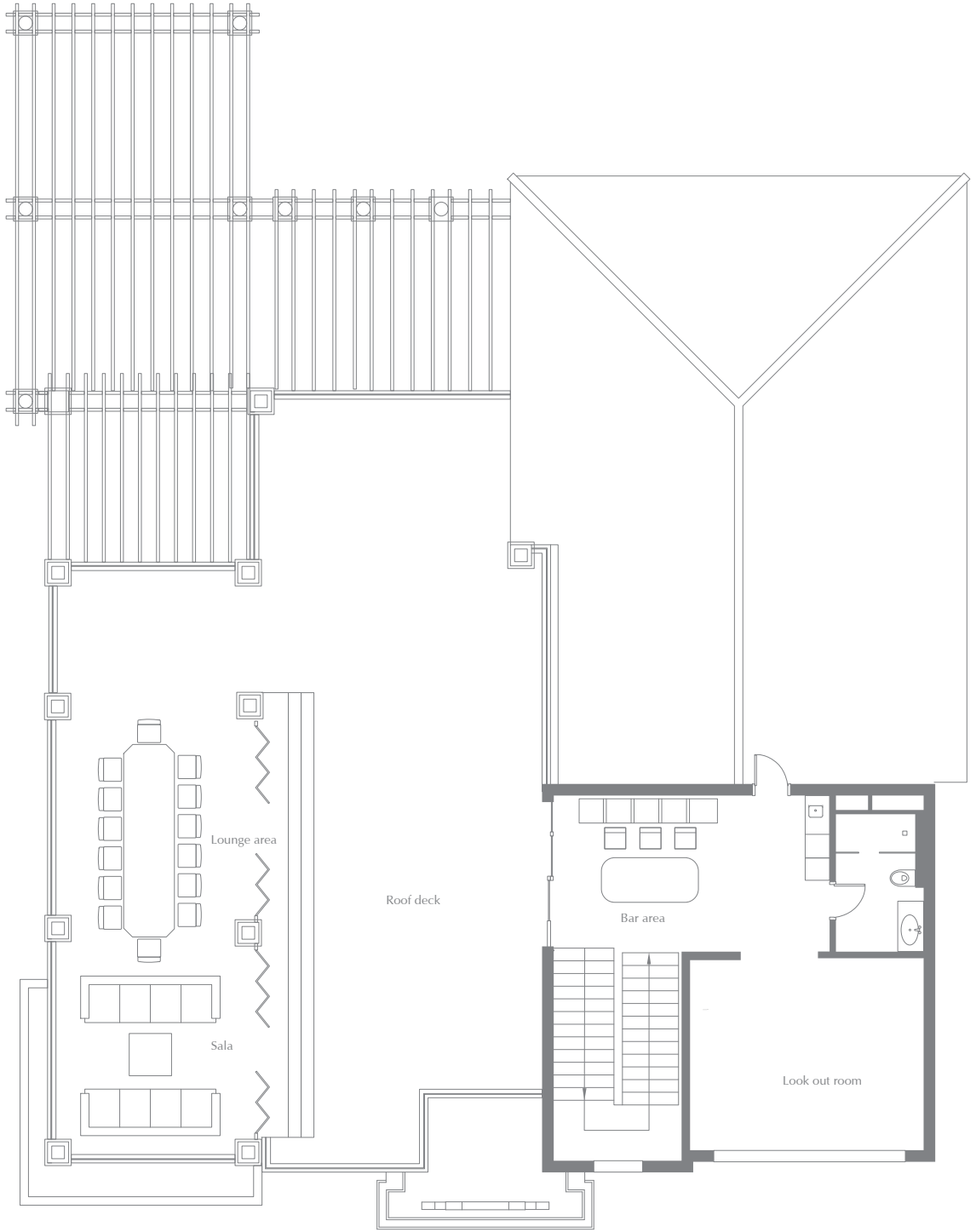


RUBY Type A



SPACE	SQM	SQF
Deck Floor Area	140	1 511

* Floorplans and built-up area of Villa 7 are provided as an example of Ruby type A villas.



RUBY

Type B

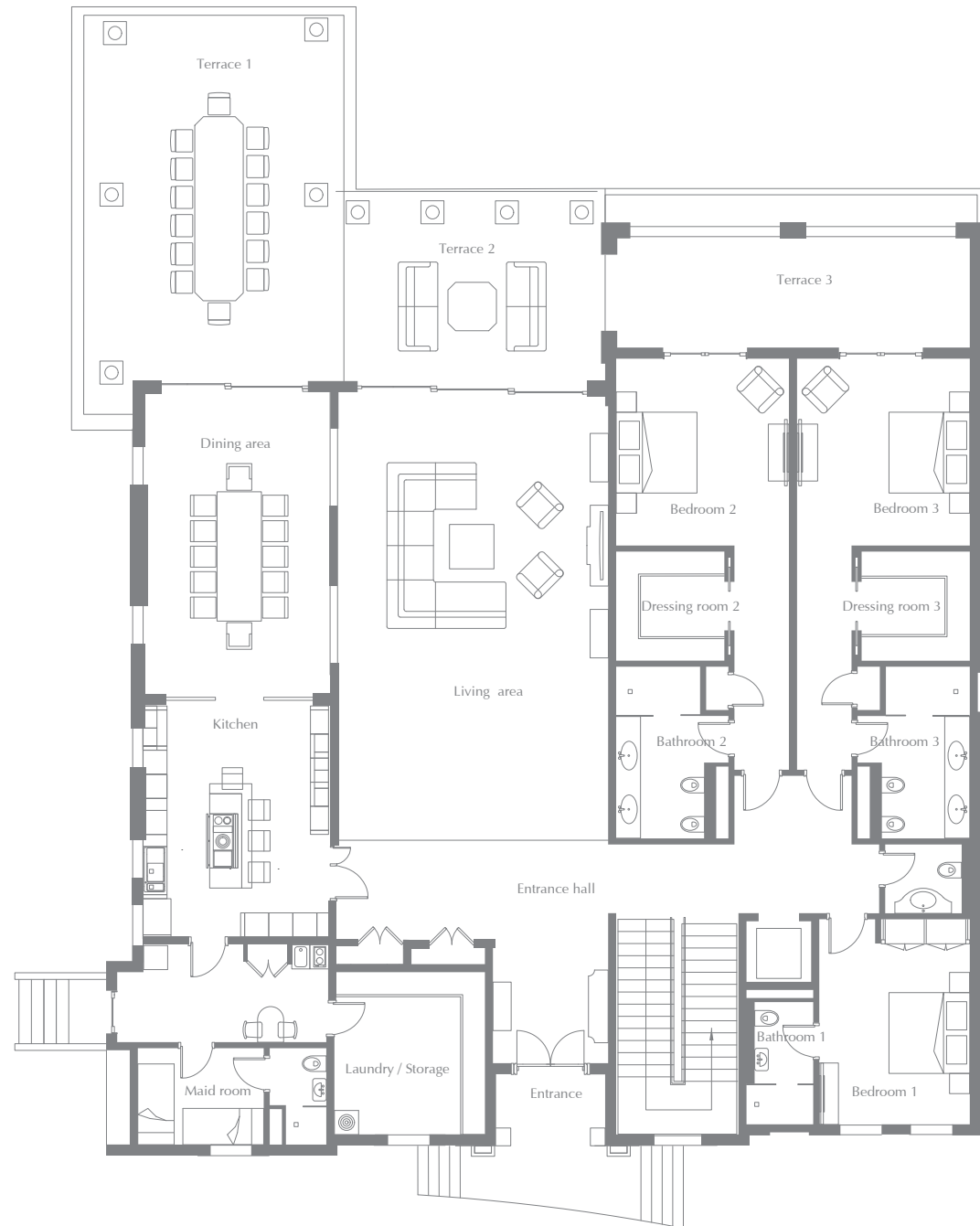
RUBY Type B

Ground floor



SPACE	SQM	SQF
Ground Floor Area	444	4 782

* Floorplans and built-up area of Villa B are provided as an example of Ruby type B villas.



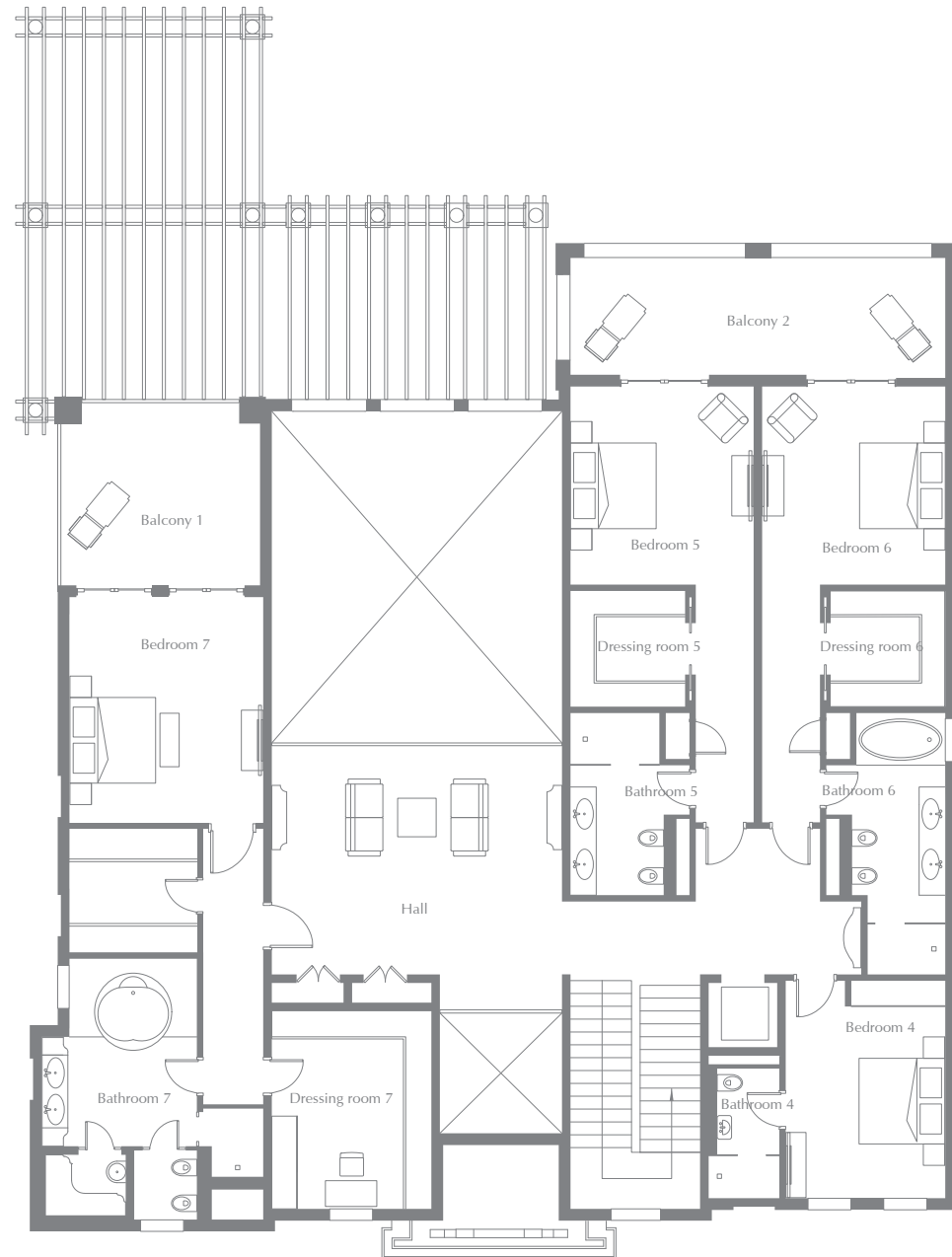
RUBY Type B

First floor



SPACE	SQM	SQF
First Floor Area	434	4 673

* Floorplans and built-up area of Villa 8 are provided as an example of Ruby type B villas.



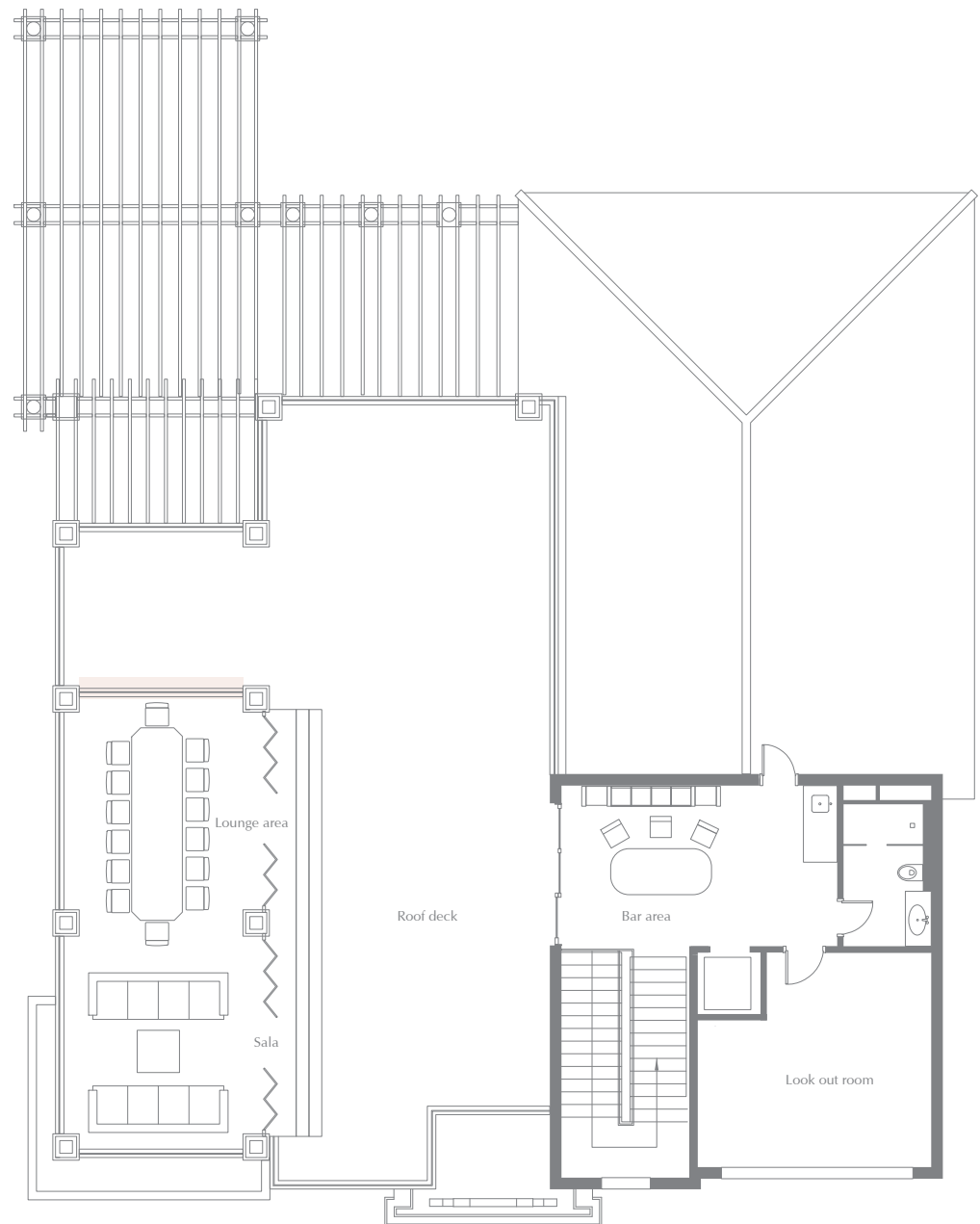
RUBY Type B

Deck floor



SPACE	SQM	SQF
Deck Floor Area	145	1 563

* Floorplans and built-up area of Villa 13 are provided as an example of Ruby type B villas.

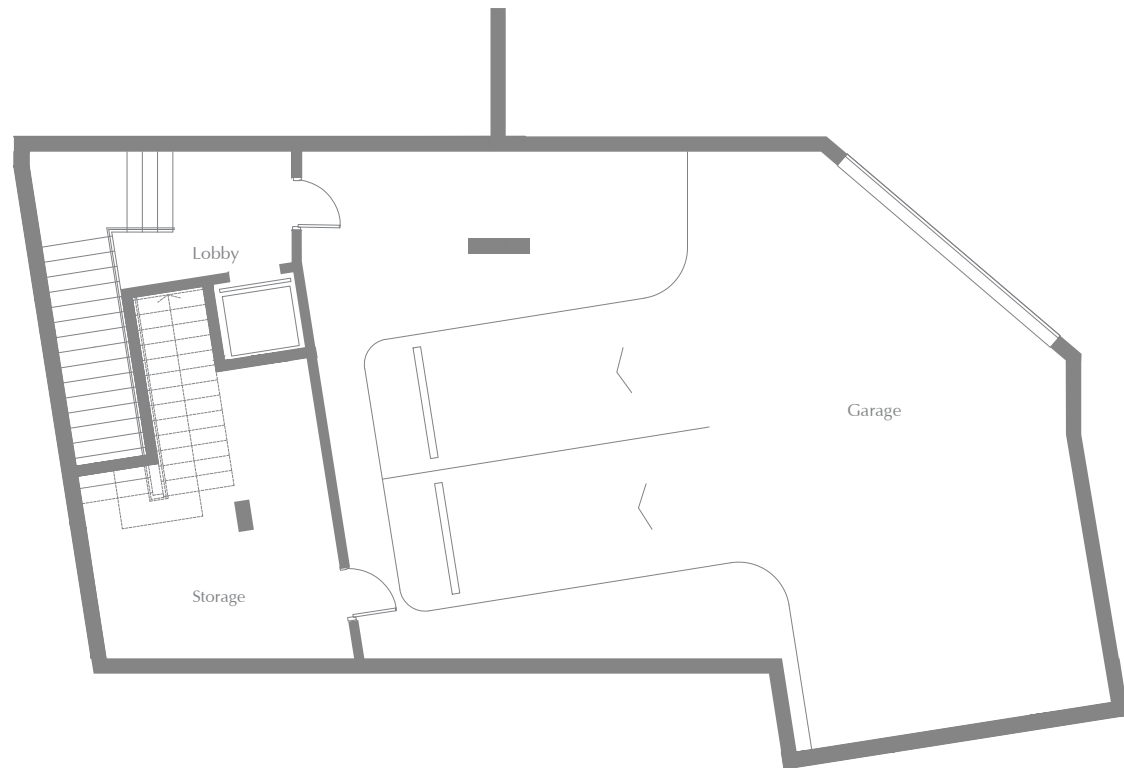


RUBY Type B

Basement floor



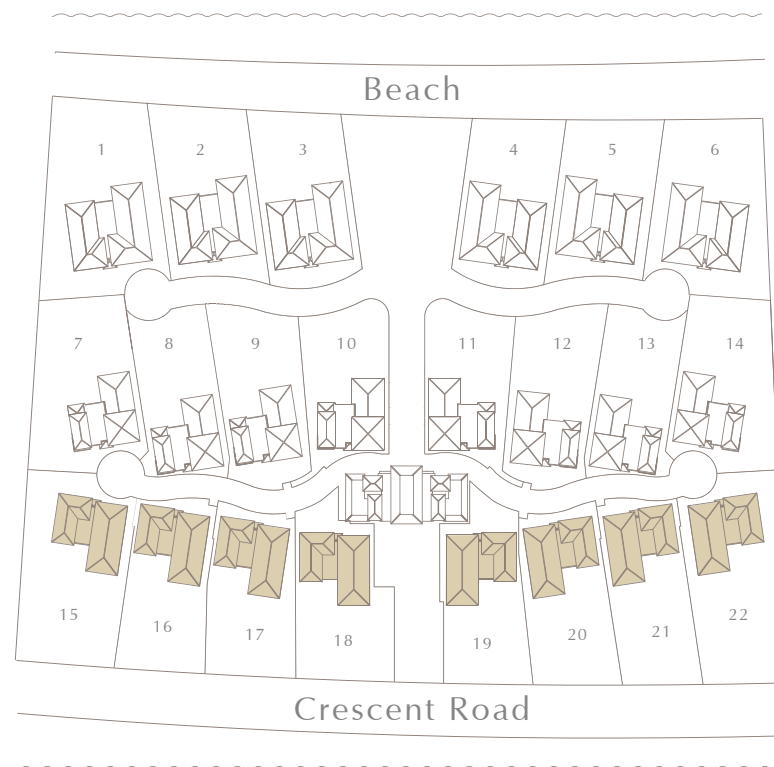
SPACE	SQM	SQF
Basement Floor Area	205	2 204



* Floorplans and built-up area of Villa 8 are provided as an example of Ruby type B villas.

EMERALD

(BUA)	Range (SQM)	Range (SQF)
Ground floor	435 – 437	4 687 – 4 709
First floor	427 – 428	4 605 – 4 607
Total	862 – 865	9 292 – 9 316
<hr/>		
Plot area	1612 – 2 188	17 355 – 23 556
<hr/>		
Ensuite bedrooms	7	



EMERALD

SAPPHIRE

EMERALD

Type A

EMERALD

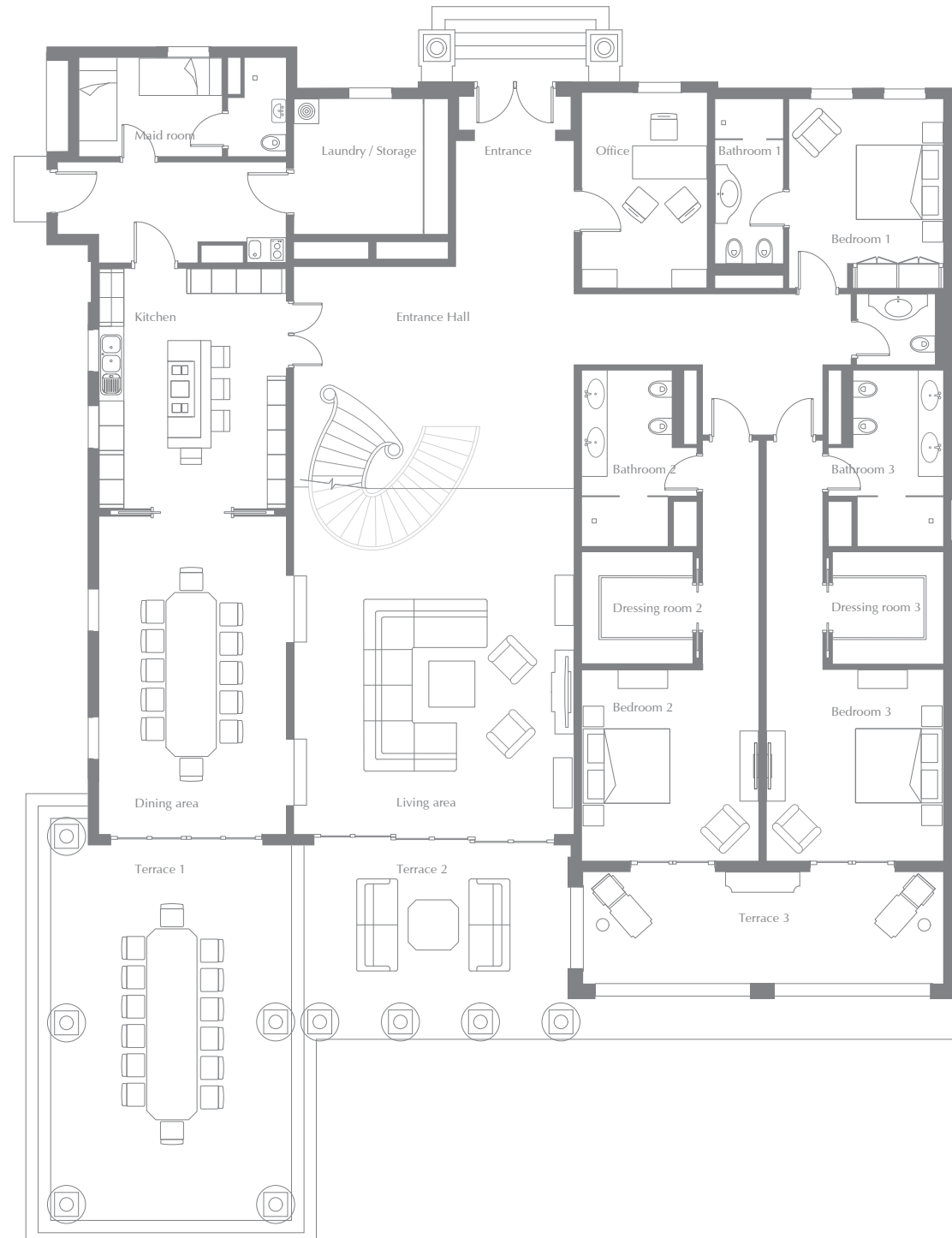
Type A

Ground floor



SPACE	SQM	SQF
Ground Floor Area	437	4 709

* Floorplans and built-up area of Villa 15 are provided as an example of Ruby type A villas.



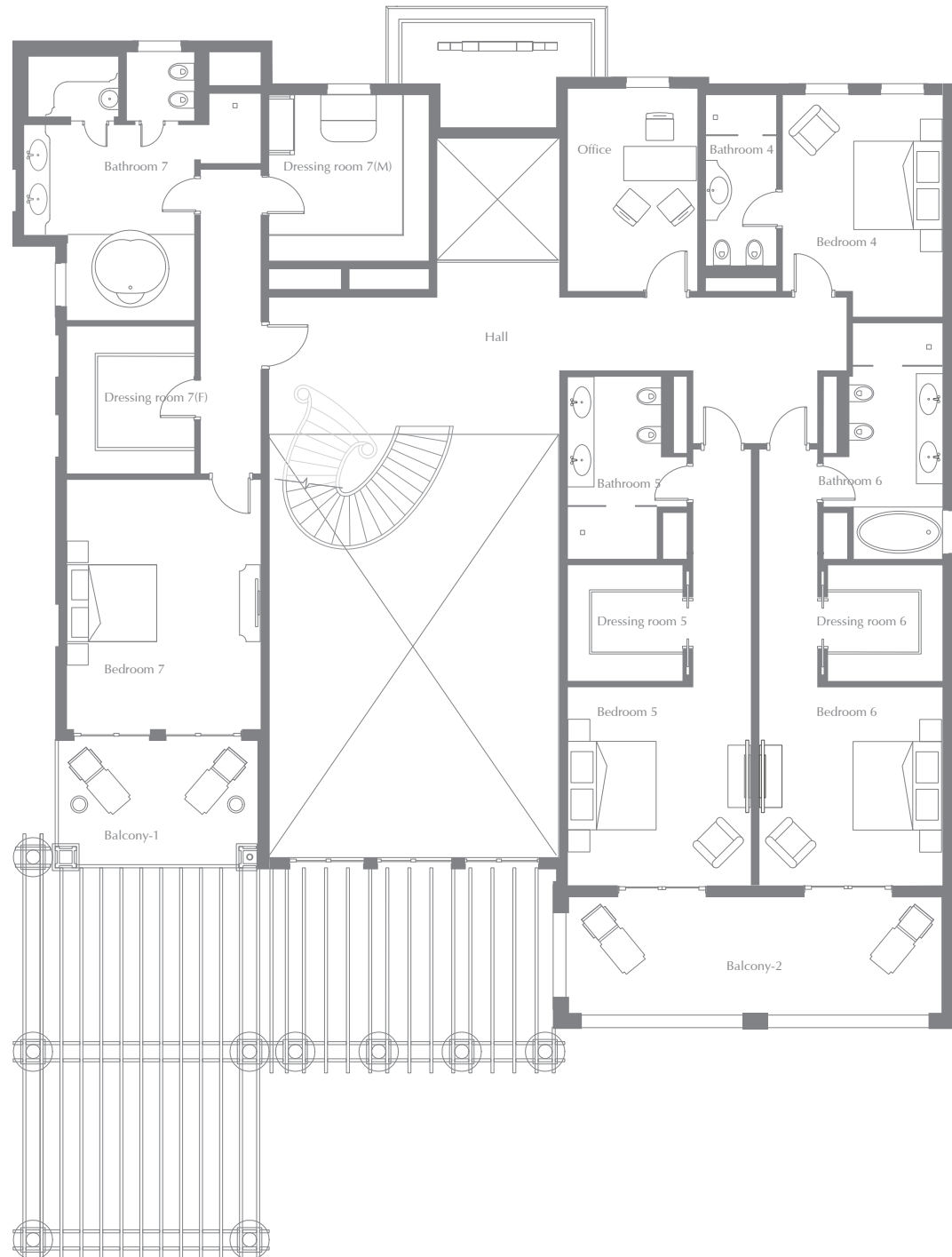
EMERALD

Type A

First floor



SPACE	SQM	SQF
First Floor Area	327	4 605



* Floorplans and built-up area of Villa 15 are provided as an example of Ruby type A villas.

EMERALD

Type B

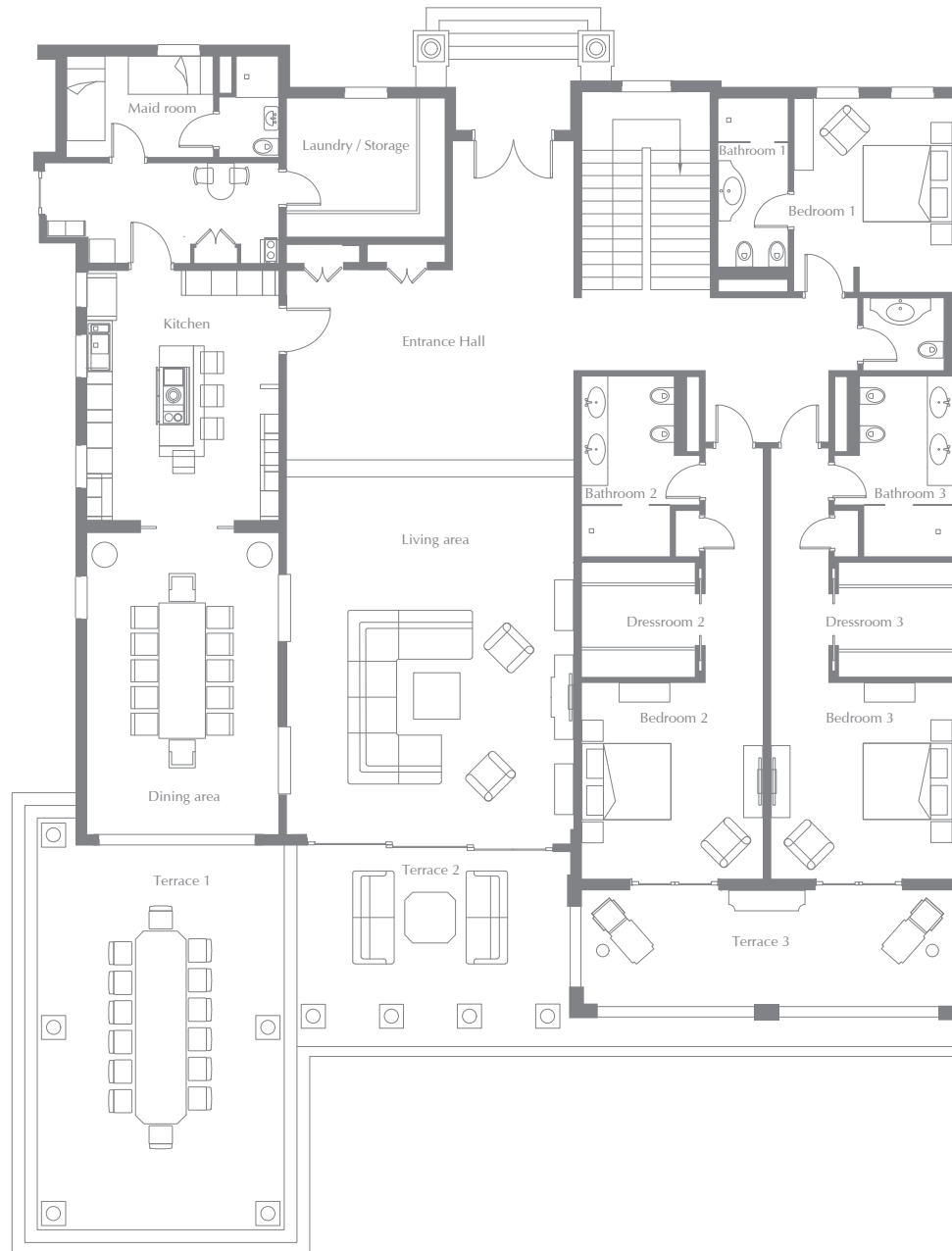
EMERALD

Type B

Ground floor



SPACE	SQM	SQF
Ground Floor Area	435	4 687



* Floorplans and built-up area of Villa 16 are provided as an example of Ruby type B villas.

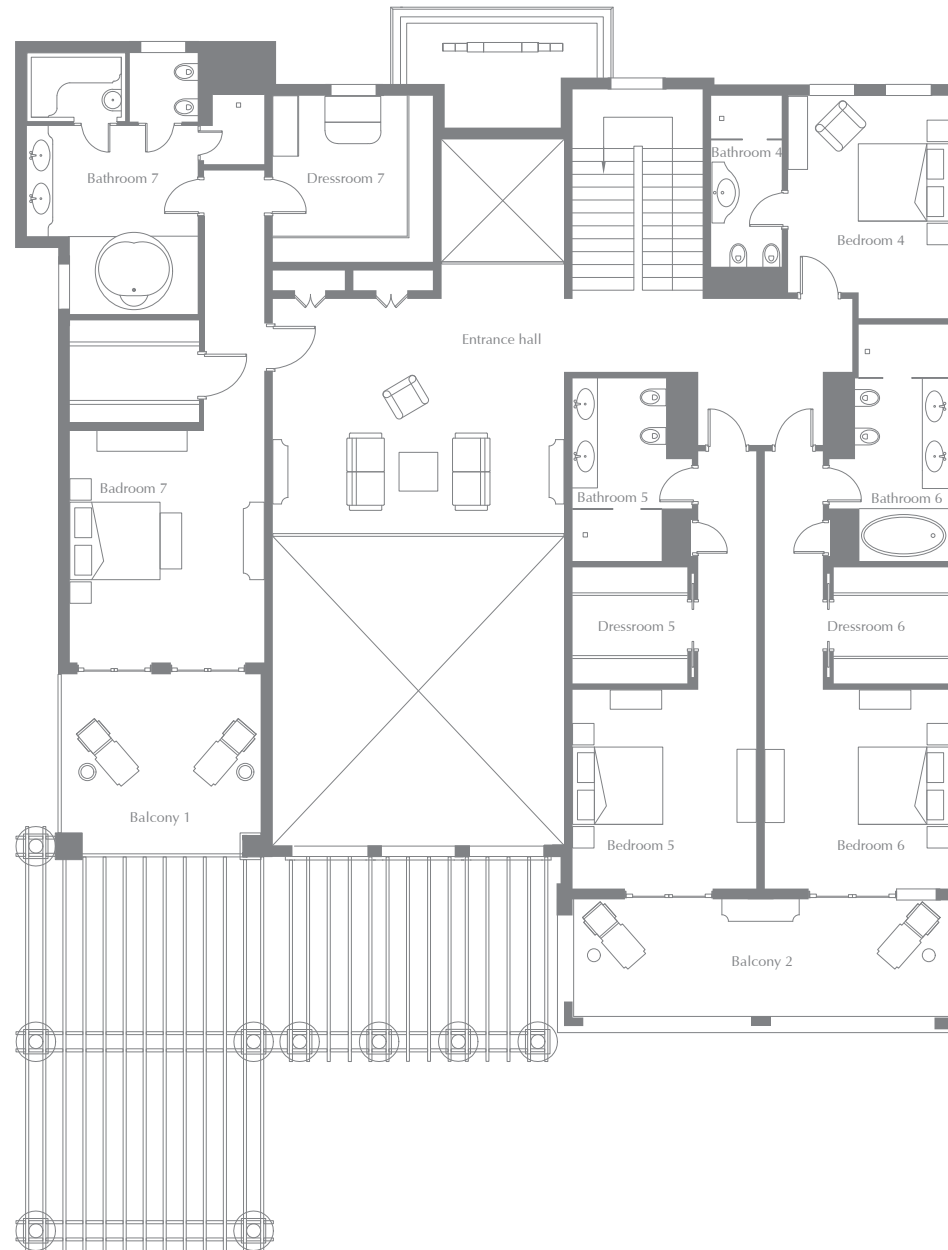
EMERALD

Type B

First floor



SPACE	SQM	SQF
First Floor Area	427	4 606

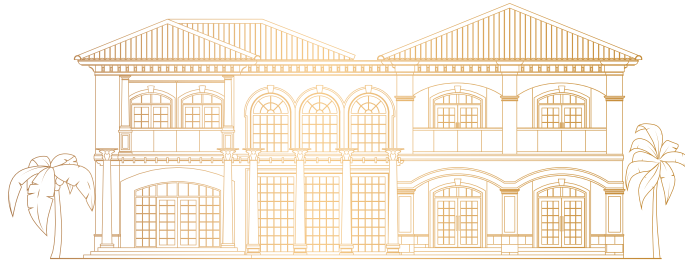


* Floorplans and built-up area of Villa 16 are provided as an example of Ruby type B villas.

CONTACT US

Toll Free : 800 37373

Hotline : +971 52 754 3244



THE HALLMARK OF LUXURY ESTATE

Email : sales@drehomes.com

Visit Us For More Info:-

<https://drehomes.com/property/22-carat-villas-palam-jumeirah/>