

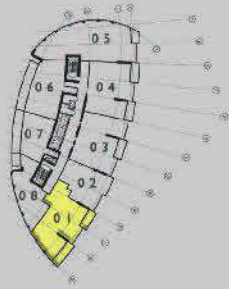
2 Bedroom

Unit 01

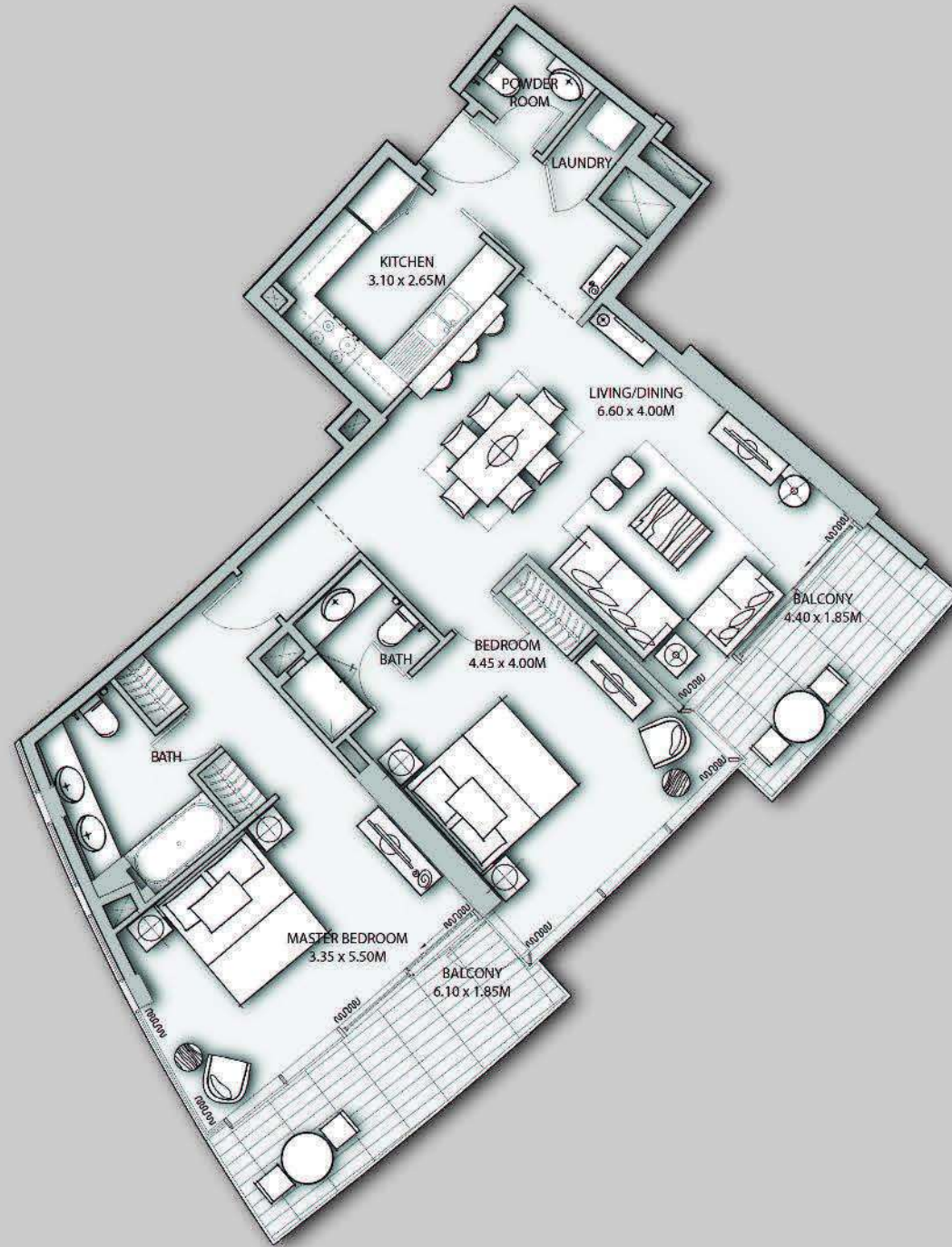
Level

4, 6, 8, 10, 12, 14, 16, 18

Tower 2

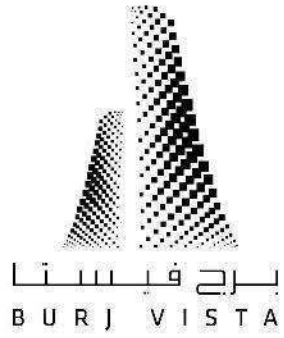


Burj Khalifa



SUITE AREA:	111.60 SQ.M (1201.26 SQ.FT)
BALCONY AREA:	18.77 SQ.M (202.04 SQ.FT)
<b>TOTAL AREA:</b>	<b>130.37 SQ.M (1403.30 SQ.FT)</b>

Disclaimer: 1. All room dimensions are measured to structural elements and exclude wall finishes and construction tolerances. 2. All dimensions have been provided by our consultant architects. 3. All materials, dimensions & drawings are approximate. Information is subject to change without notice. 4. Actual suite area may vary from the stated area. Drawings not to scale. The developer reserves the right to make revisions. 5. Calculation of suite area is measured as the area bounded by the centre line of demising or partition walls separating one unit from another unit, the exterior face of all exterior walls, and the exterior face of the corridor wall enclosing the adjoining unit. 6. Calculation of balcony area is measured as the area bounded by the centre line of demising or partition walls separating one unit from another unit, the outmost face of the enclosing guard and the external face of the unit adjoining the balcony. 7. The units are measured at typical floor in the building. Columns may vary in size depending on the floor level.



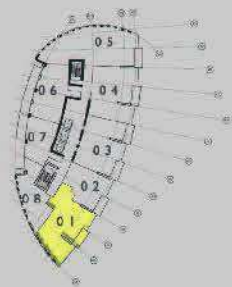
2 Bedroom

Unit 01

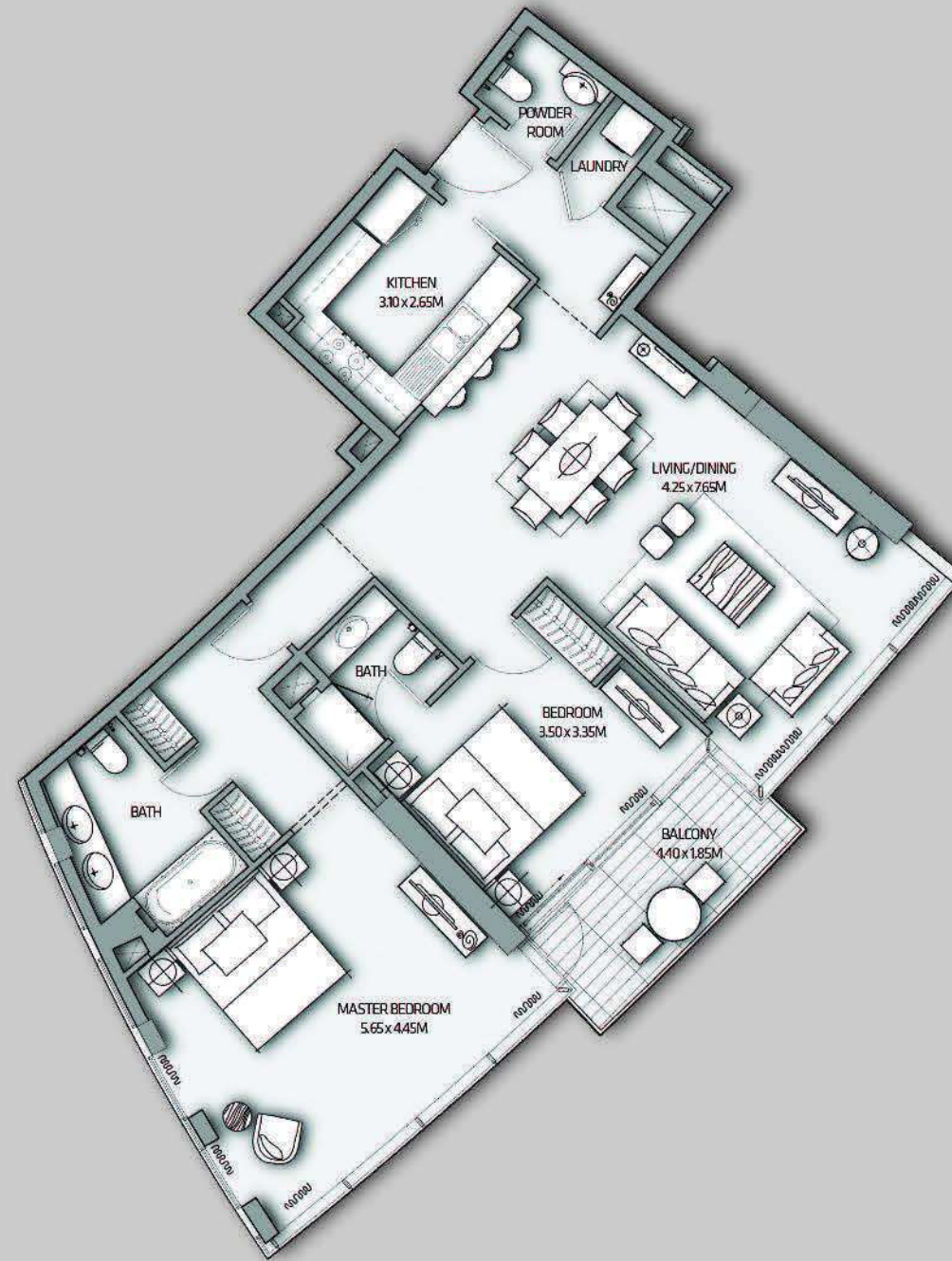
Level

5, 7, 9, 11, 13, 15, 17

Tower 2



Burj Khalifa



SUITE AREA:	118.11 SQ.M (1271.34 SQ.FT)
BALCONY AREA:	7.64 SQ.M (82.24 SQ.FT)
<b>TOTAL AREA:</b>	<b>125.75 SQ.M (1353.57 SQ.FT)</b>

Disclaimer: 1. All room dimensions are measured to structural elements and exclude wall finishes and construction tolerances. 2. All dimensions have been provided by our consultant architects. 3. All materials, dimensions & drawings are approximate. Information is subject to change without notice. 4. Actual suite area may vary from the stated area. Drawings not to scale. The developer reserves the right to make revisions. 5. Calculation of suite area is measured as the area bounded by the centre line of demising or partition walls separating one unit from another unit, the exterior face of all exterior walls, and the exterior face of the corridor wall enclosing the adjoining unit. 6. Calculation of balcony area is measured as the area bounded by the centre line of demising or partition walls separating one unit from another unit, the outmost face of the enclosing guard and the external face of the unit adjoining the balcony. 7. The units are measured at typical floor in the building. Columns may vary in size depending on the floor level.



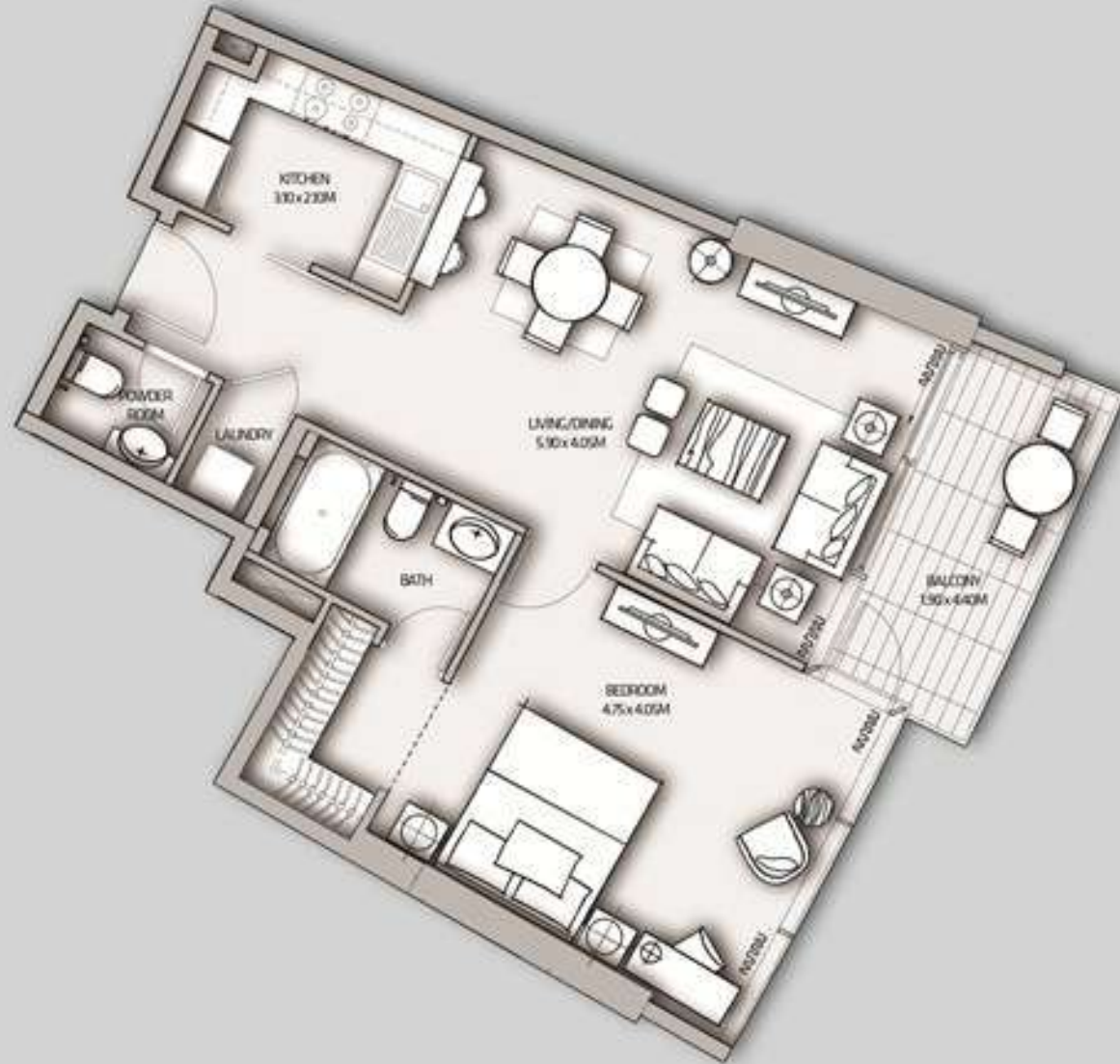
1 Bedroom

Unit 02

Level

4, 6, 8, 10, 12, 14, 16, 18

Tower 2



SUITE AREA:	70.51 SQ.M	(758.97 SQ.FT)
BALCONY AREA:	7.97 SQ.M	(85.79 SQ.FT)
<b>TOTAL AREA:</b>	<b>78.48 SQ.M</b>	<b>(844.76 SQ.FT)</b>

Disclaimer: 1. All room dimensions are measured to structural elements and exclude wall finishes and construction tolerances. 2. All dimensions have been provided by our consultant architects. 3. All materials, dimensions & drawings are approximate. Information is subject to change without notice. 4. Actual suite area may vary from the stated area. Drawings not to scale. The developer reserves the right to make revisions. 5. Calculation of suite area is measured as the area bounded by the centre line of demising or partition walls separating one unit from another unit, the exterior face of all exterior walls, and the exterior face of the corridor wall enclosing the adjoining unit. 6. Calculation of balcony area is measured as the area bounded by the centre line of demising or partition walls separating one unit from another unit, the outmost face of the enclosing guard and the external face of the unit adjoining the balcony. 7. The units are measured at typical floor in the building. Columns may vary in size depending on the floor level.



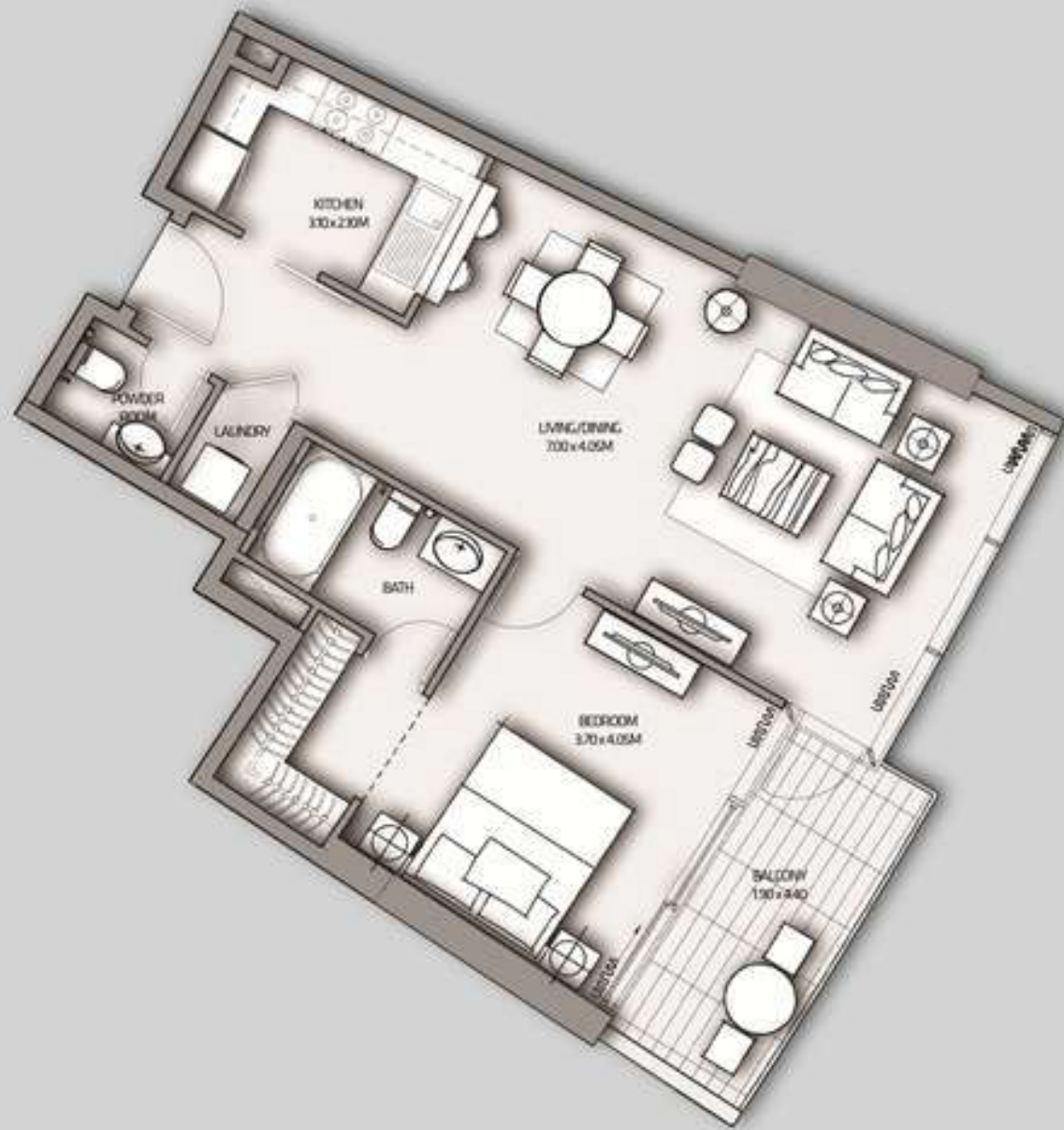
1 Bedroom

Unit 02

Level

5, 7, 9, 11, 13, 15, 17

Tower 2



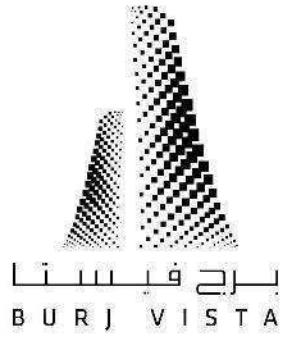
SUITE AREA:  
BALCONY AREA:

70.51 SQ.M (758.97 SQ.FT)  
7.97 SQ.M (85.79 SQ.FT)

TOTAL AREA:

78.48 SQ.M (844.76 SQ.FT)

Disclaimer: 1. All room dimensions are measured to structural elements and exclude wall finishes and construction tolerances. 2. All dimensions have been provided by our consultant architects. 3. All materials, dimensions & drawings are approximate. Information is subject to change without notice. 4. Actual suite area may vary from the stated area. Drawings not to scale. The developer reserves the right to make revisions. 5. Calculation of suite area is measured as the area bounded by the centre line of demising or partition walls separating one unit from another unit, the exterior face of all exterior walls, and the exterior face of the corridor wall enclosing the adjoining unit. 6. Calculation of balcony area is measured as the area bounded by the centre line of demising or partition walls separating one unit from another unit, the outmost face of the enclosing guard and the external face of the unit adjoining the balcony. 7. The units are measured at typical floor in the building. Columns may vary in size depending on the floor level.



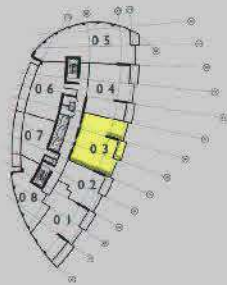
2 Bedroom

Unit 03

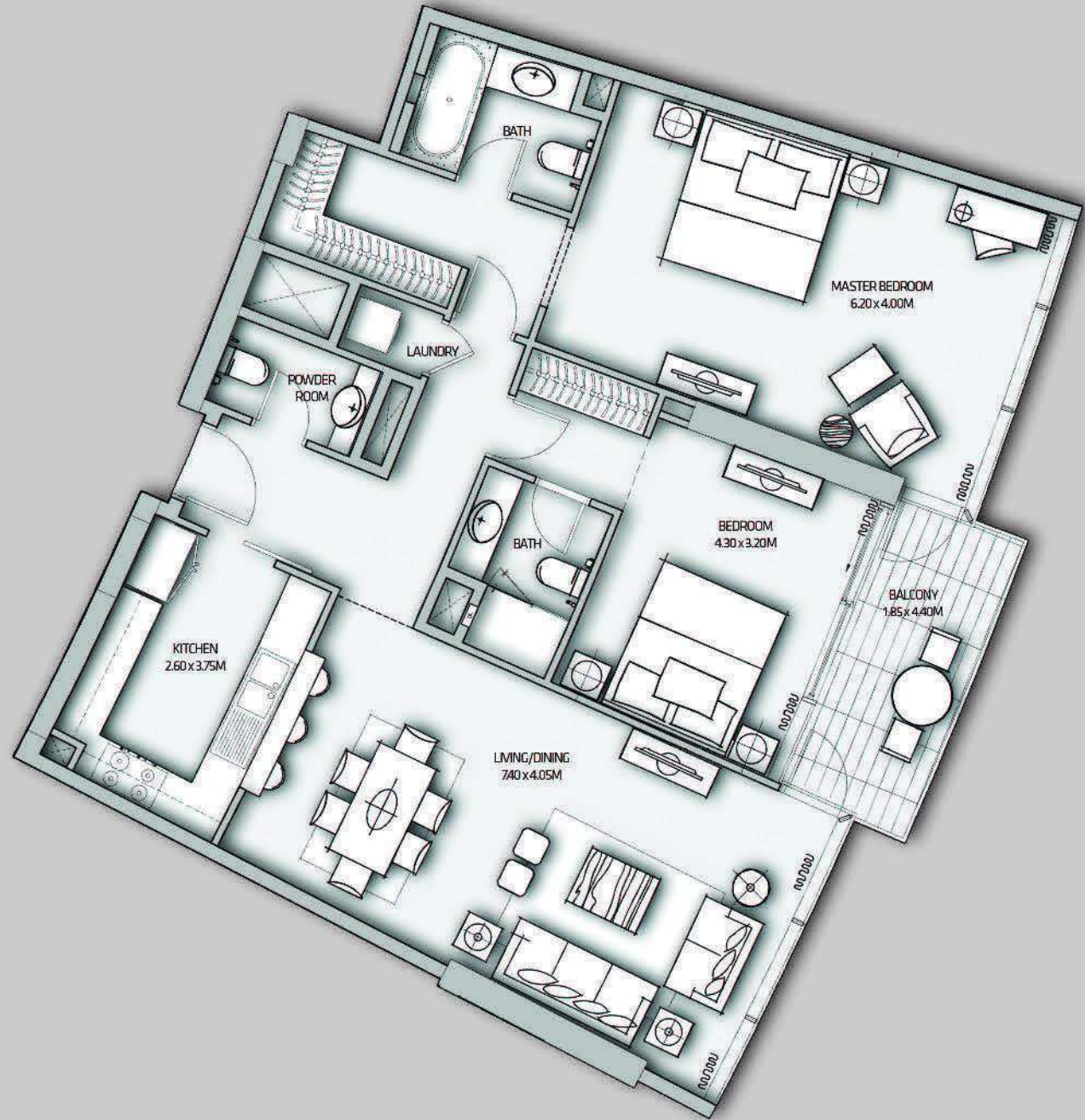
Level

4, 6, 8, 10, 12, 14, 16, 18

Tower 2



Burj Khalifa



SUITE AREA:  
 BALCONY AREA:  
 TOTAL AREA:

117.48 SQ.M (1264.55 SQ.FT)  
 7.88 SQ.M (84.82 SQ.FT)  
 125.36 SQ.M (1349.38 SQ.FT)

Disclaimer: 1. All room dimensions are measured to structural elements and exclude wall finishes and construction tolerances. 2. All dimensions have been provided by our consultant architects. 3. All materials, dimensions & drawings are approximate. Information is subject to change without notice. 4. Actual suite area may vary from the stated area. Drawings not to scale. The developer reserves the right to make revisions. 5. Calculation of suite area is measured as the area bounded by the centre line of demising or partition walls separating one unit from another unit, the exterior face of all exterior walls, and the exterior face of the corridor wall enclosing the adjoining unit. 6. Calculation of balcony area is measured as the area bounded by the centre line of demising or partition walls separating one unit from another unit, the outmost face of the enclosing guard and the external face of the unit adjoining the balcony. 7. The units are measured at typical floor in the building. Columns may vary in size depending on the floor level.



2 Bedroom

Unit 03

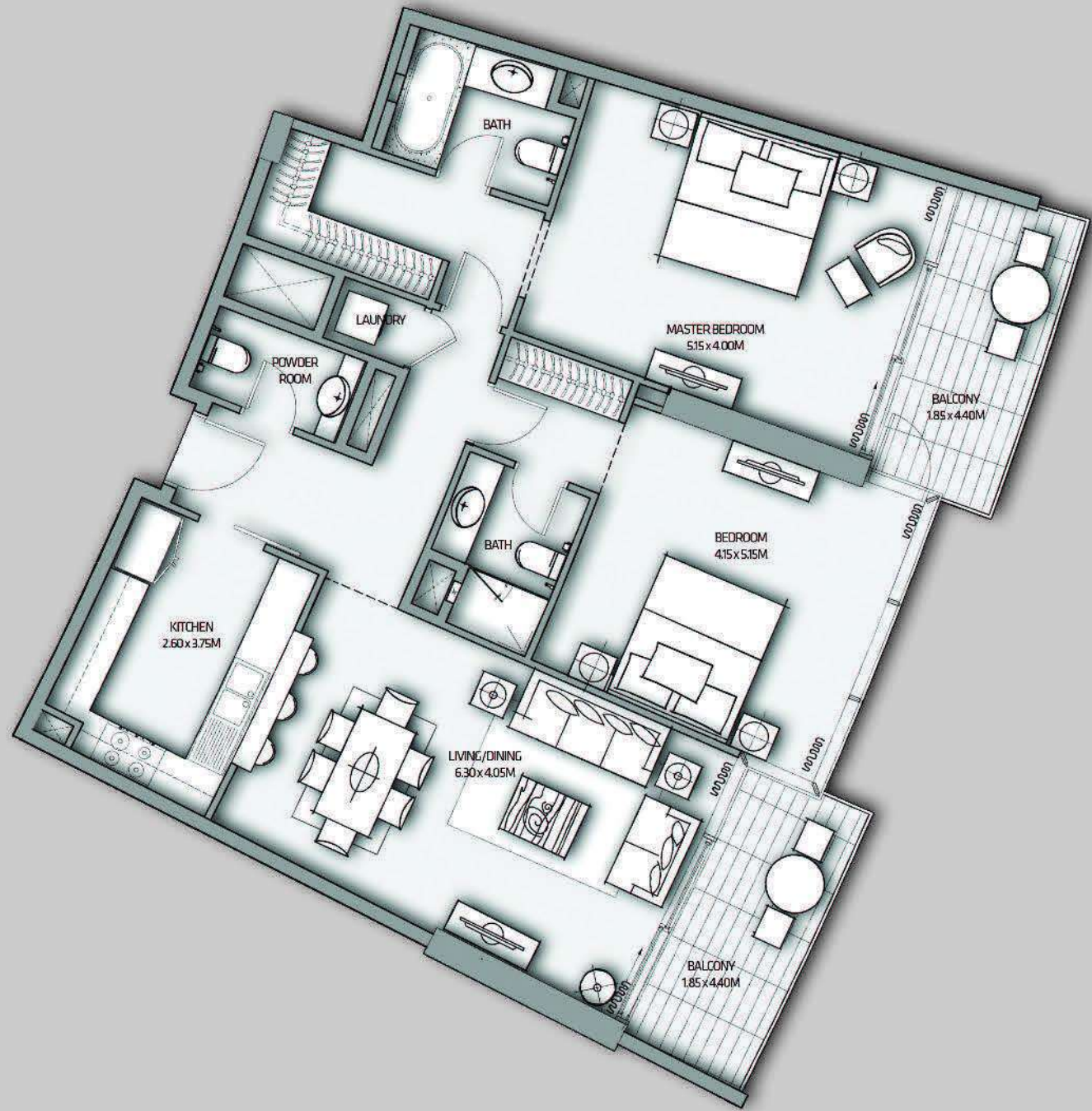
Level

5, 7, 9, 11, 13, 15, 17

Tower 2



Burj Khalifa



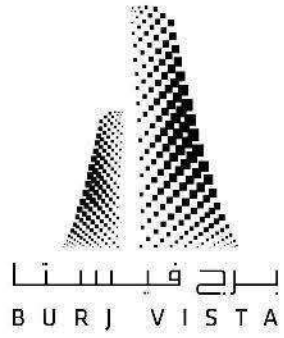
SUITE AREA:  
BALCONY AREA:

112.86 SQ.M (1214.83 SQ.FT)  
15.89 SQ.M (171.04 SQ.FT)

TOTAL AREA:

128.75 SQ.M (1385.87 SQ.FT)

Disclaimer: 1. All room dimensions are measured to structural elements and exclude wall finishes and construction tolerances. 2. All dimensions have been provided by our consultant architects. 3. All materials, dimensions & drawings are approximate. Information is subject to change without notice. 4. Actual suite area may vary from the stated area. Drawings not to scale. The developer reserves the right to make revisions. 5. Calculation of suite area is measured as the area bounded by the centre line of demising or partition walls separating one unit from another unit, the exterior face of all exterior walls, and the exterior face of the corridor wall enclosing the adjoining unit. 6. Calculation of balcony area is measured as the area bounded by the centre line of demising or partition walls separating one unit from another unit, the outmost face of the enclosing guard and the external face of the unit adjoining the balcony. 7. The units are measured at typical floor in the building. Columns may vary in size depending on the floor level.



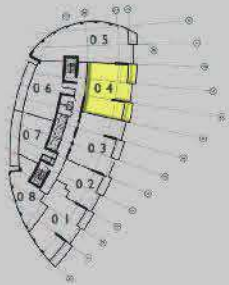
2 Bedroom

Unit 04

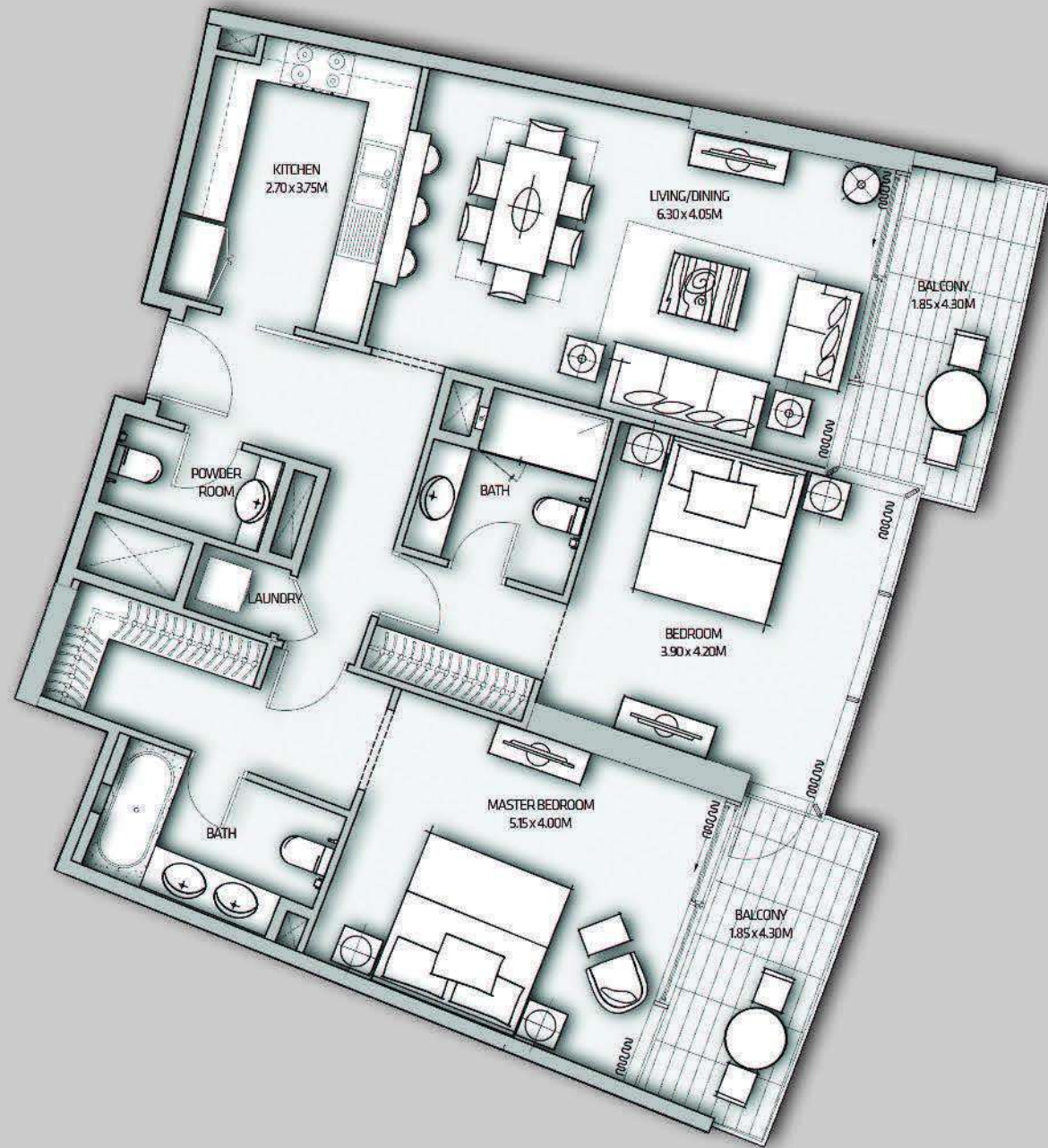
Level

4, 6, 8, 10, 12, 14, 16, 18

Tower 2



Burj Khalifa



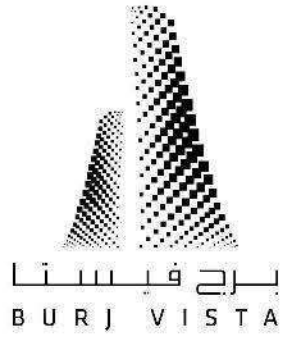
SUITE AREA:  
BALCONY AREA:

112.86 SQ.M (1214.83 SQ.FT)  
15.89 SQ.M (171.04 SQ.FT)

TOTAL AREA:

128.75 SQ.M (1385.87 SQ.FT)

Disclaimer: 1. All room dimensions are measured to structural elements and exclude wall finishes and construction tolerances. 2. All dimensions have been provided by our consultant architects. 3. All materials, dimensions & drawings are approximate. Information is subject to change without notice. 4. Actual suite area may vary from the stated area. Drawings not to scale. The developer reserves the right to make revisions. 5. Calculation of suite area is measured as the area bounded by the centre line of demising or partition walls separating one unit from another unit, the exterior face of all exterior walls, and the exterior face of the corridor wall enclosing the adjoining unit. 6. Calculation of balcony area is measured as the area bounded by the centre line of demising or partition walls separating one unit from another unit, the outmost face of the enclosing guard and the external face of the unit adjoining the balcony. 7. The units are measured at typical floor in the building. Columns may vary in size depending on the floor level.



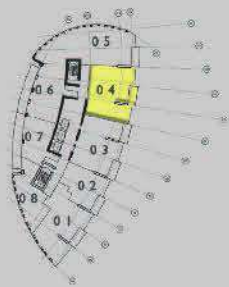
2 Bedroom

Unit 04

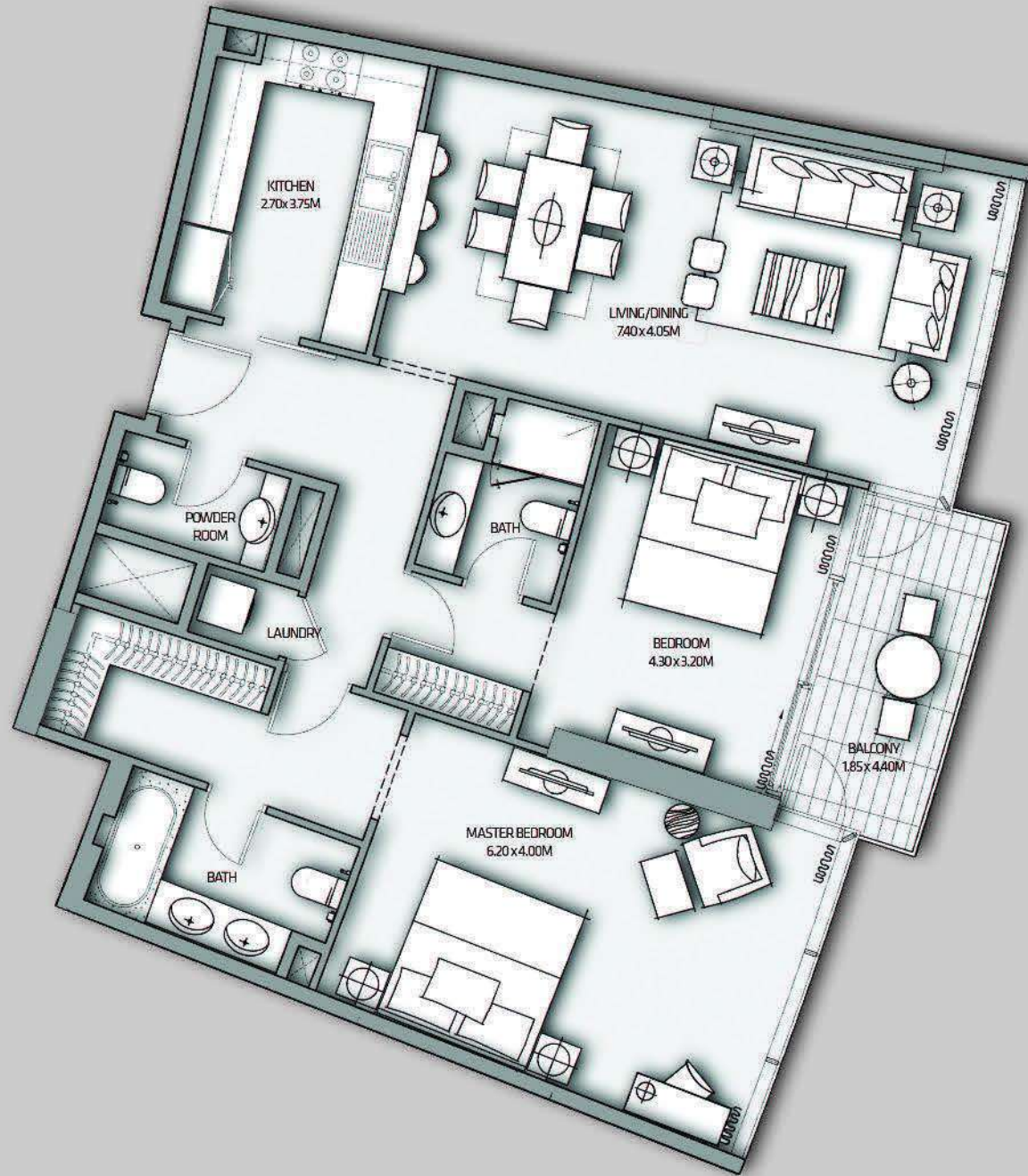
Level

5, 7, 9, 11, 13, 15, 17

Tower 2



Burj Khalifa



SUITE AREA:  
BALCONY AREA:

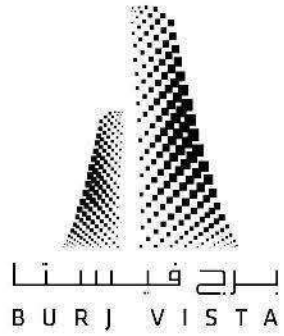
117.48 SQ.M (1264.55 SQ.FT)  
7.88 SQ.M (84.82 SQ.FT)

TOTAL AREA:

125.36 SQ.M (1349.38 SQ.FT)

Disclaimer: 1. All room dimensions are measured to structural elements and exclude wall finishes and construction tolerances. 2. All dimensions have been provided by our consultant architects. 3. All materials, dimensions & drawings are approximate. Information is subject to change without notice. 4. Actual suite area may vary from the stated area. Drawings not to scale. The developer reserves the right to make revisions. 5. Calculation of suite area is measured as the area bounded by the centre line of demising or partition walls separating one unit from another unit, the exterior face of all exterior walls, and the exterior face of the corridor wall enclosing the adjoining unit. 6. Calculation of balcony area is measured as the area bounded by the centre line of demising or partition walls separating one unit from another unit, the outmost face of the enclosing guard and the external face of the unit adjoining the balcony. 7. The units are measured at typical floor in the building. Columns may vary in size depending on the floor level.





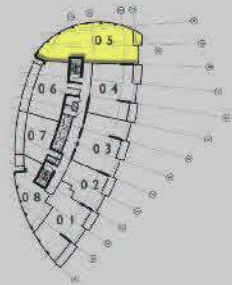
3 Bedroom

Unit 05

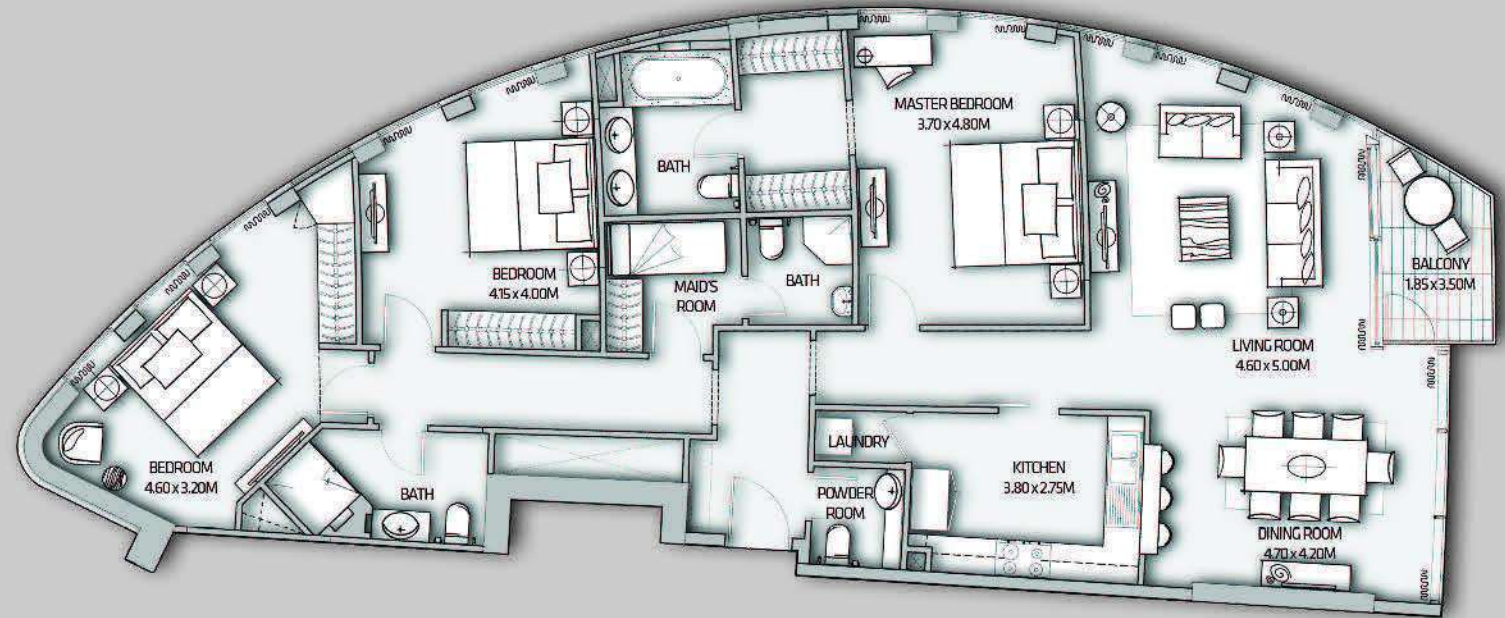
Level

4, 6, 8, 10, 12, 14, 16, 18

Tower 2



Burj Khalifa



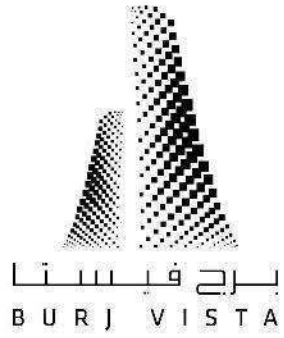
SUITE AREA:  
BALCONY AREA:

165.50 SQ.M (1781.44 SQ.FT)  
5.61 SQ.M (60.39 SQ.FT)

TOTAL AREA:

171.11 SQ.M (1841.83 SQ.FT)

Disclaimer: 1. All room dimensions are measured to structural elements and exclude wall finishes and construction tolerances. 2. All dimensions have been provided by our consultant architects. 3. All materials, dimensions & drawings are approximate. Information is subject to change without notice. 4. Actual suite area may vary from the stated area. Drawings not to scale. The developer reserves the right to make revisions. 5. Calculation of suite area is measured as the area bounded by the centre line of demising or partition walls separating one unit from another unit, the exterior face of all exterior walls, and the exterior face of the corridor wall enclosing the adjoining unit. 6. Calculation of balcony area is measured as the area bounded by the centre line of demising or partition walls separating one unit from another unit, the outmost face of the enclosing guard and the external face of the unit adjoining the balcony. 7. The units are measured at typical floor in the building. Columns may vary in size depending on the floor level.



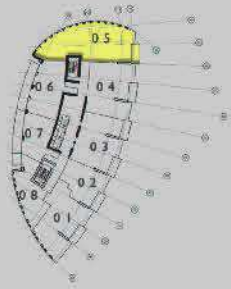
3 Bedroom

Unit 05

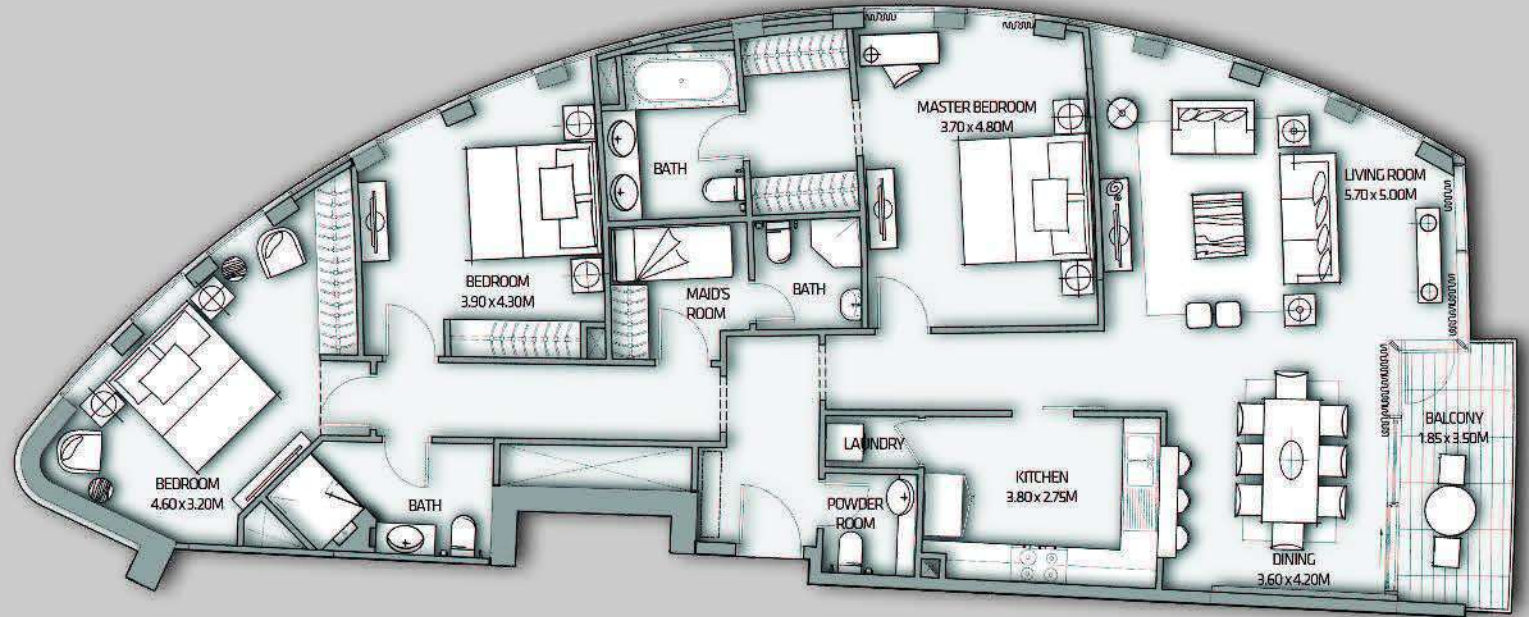
Level

5, 7, 9, 11, 13, 15, 17

Tower 2



Burj Khalifa



SUITE AREA:	164.52 SQ.M (1770.89 SQ.FT)
BALCONY AREA:	7.88 SQ.M (84.82 SQ.FT)
<b>TOTAL AREA:</b>	<b>172.40 SQ.M (1855.71 SQ.FT)</b>

Disclaimer: 1. All room dimensions are measured to structural elements and exclude wall finishes and construction tolerances. 2. All dimensions have been provided by our consultant architects. 3. All materials, dimensions & drawings are approximate. Information is subject to change without notice. 4. Actual suite area may vary from the stated area. Drawings not to scale. The developer reserves the right to make revisions. 5. Calculation of suite area is measured as the area bounded by the centre line of demising or partition walls separating one unit from another unit, the exterior face of all exterior walls, and the exterior face of the corridor wall enclosing the adjoining unit. 6. Calculation of balcony area is measured as the area bounded by the centre line of demising or partition walls separating one unit from another unit, the outmost face of the enclosing guard and the external face of the unit adjoining the balcony. 7. The units are measured at typical floor in the building. Columns may vary in size depending on the floor level.

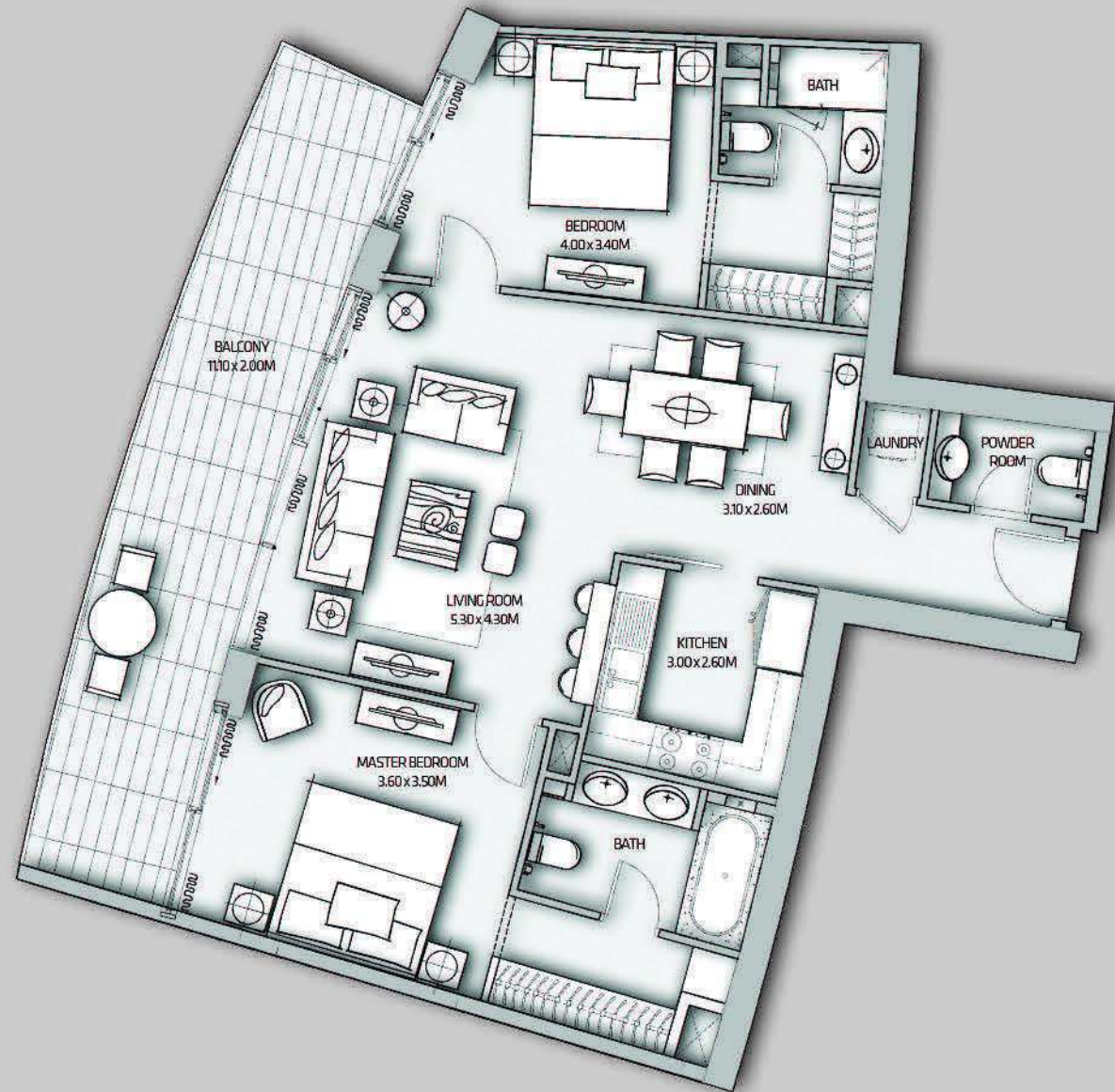
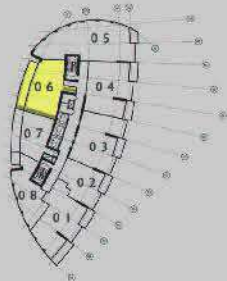


2 Bedroom

Unit 06

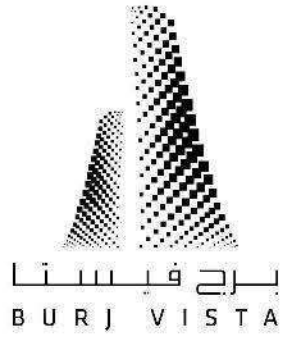
Level 04 - 18

Tower 2



SUITE AREA:	100.98 SQ.M (1086.95 SQ.FT)
BALCONY AREA:	22.46 SQ.M (241.76 SQ.FT)
<b>TOTAL AREA:</b>	<b>123.44 SQ.M (1328.71 SQ.FT)</b>

Disclaimer: 1. All room dimensions are measured to structural elements and exclude wall finishes and construction tolerances. 2. All dimensions have been provided by our consultant architects. 3. All materials, dimensions & drawings are approximate. Information is subject to change without notice. 4. Actual suite area may vary from the stated area. Drawings not to scale. The developer reserves the right to make revisions. 5. Calculation of suite area is measured as the area bounded by the centre line of demising or partition walls separating one unit from another unit, the exterior face of all exterior walls, and the exterior face of the corridor wall enclosing the adjoining unit. 6. Calculation of balcony area is measured as the area bounded by the centre line of demising or partition walls separating one unit from another unit, the outmost face of the enclosing guard and the external face of the unit adjoining the balcony. 7. The units are measured at typical floor in the building. Columns may vary in size depending on the floor level.

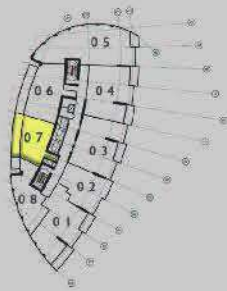


1 Bedroom

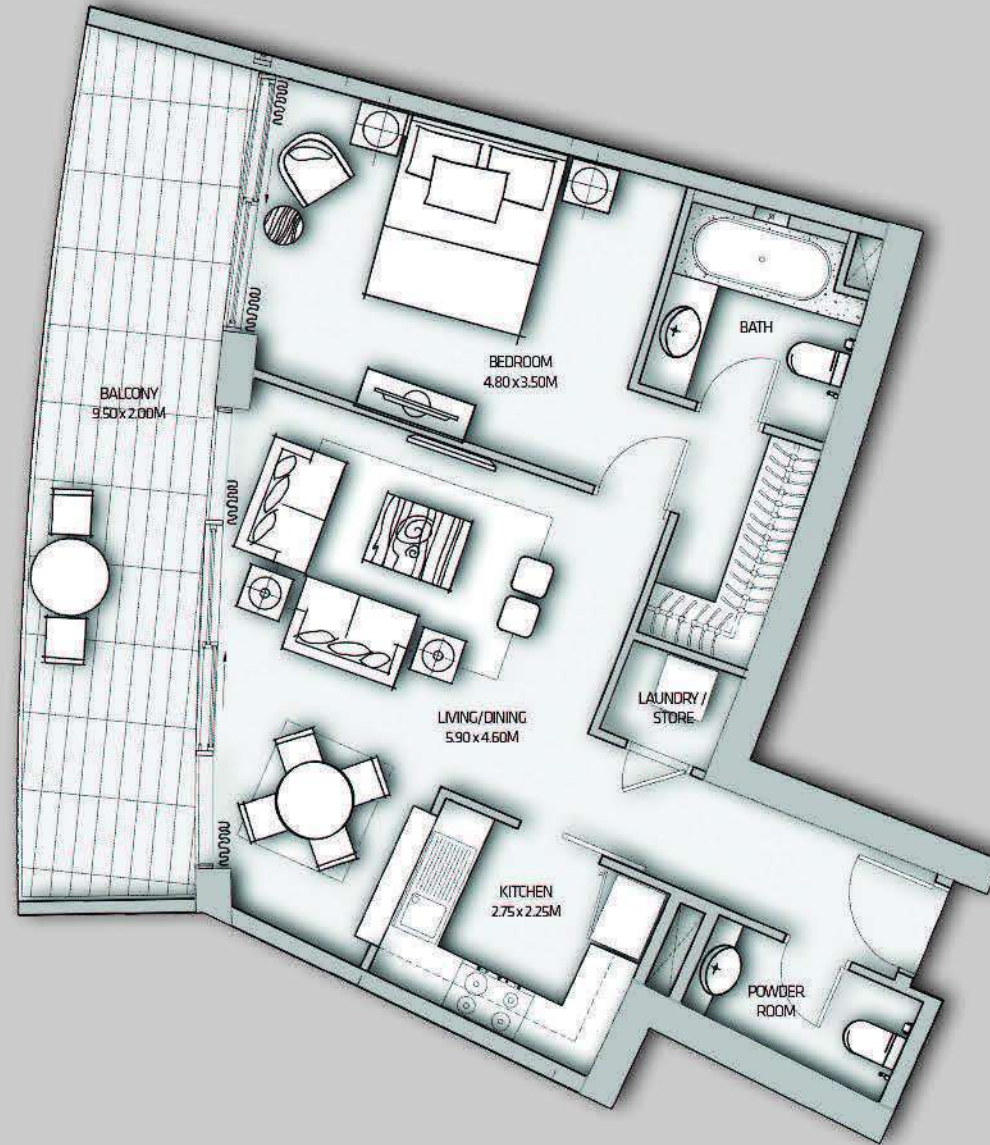
Unit 07

Level 04 - 18

Tower 2

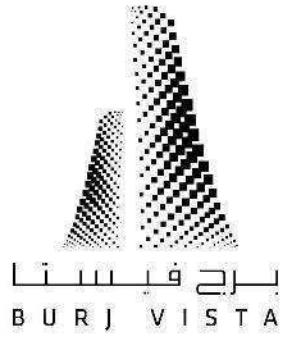


Burj Khalifa



SUITE AREA:	70.85 SQ.M	(762.63 SQ.FT)
BALCONY AREA:	19.76 SQ.M	(212.70 SQ.FT)
<b>TOTAL AREA:</b>	<b>90.61 SQ.M</b>	<b>(975.33 SQ.FT)</b>

Disclaimer: 1. All room dimensions are measured to structural elements and exclude wall finishes and construction tolerances. 2. All dimensions have been provided by our consultant architects. 3. All materials, dimensions & drawings are approximate. Information is subject to change without notice. 4. Actual suite area may vary from the stated area. Drawings not to scale. The developer reserves the right to make revisions. 5. Calculation of suite area is measured as the area bounded by the centre line of demising or partition walls separating one unit from another unit, the exterior face of all exterior walls, and the exterior face of the corridor wall enclosing the adjoining unit. 6. Calculation of balcony area is measured as the area bounded by the centre line of demising or partition walls separating one unit from another unit, the outmost face of the enclosing guard and the external face of the unit adjoining the balcony. 7. The units are measured at typical floor in the building. Columns may vary in size depending on the floor level.

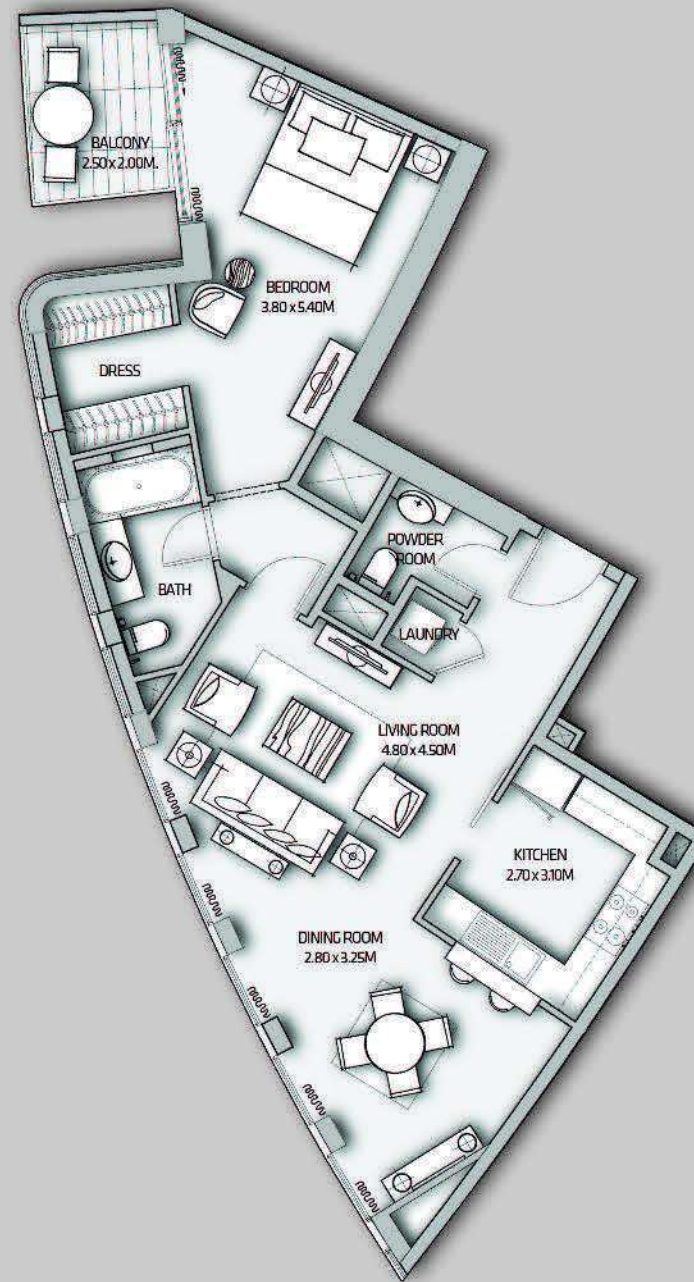
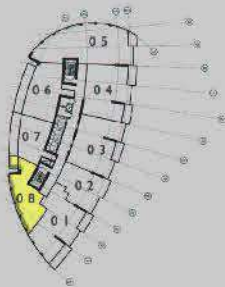


1 Bedroom

Unit 08

Level 04 - 18

Tower 2



SUITE AREA:	86.90 SQ.M	(935.39 SQ.FT)
BALCONY AREA:	5.48 SQ.M	(58.99 SQ.FT)
<b>TOTAL AREA:</b>	<b>92.38 SQ.M</b>	<b>(994.38 SQ.FT)</b>

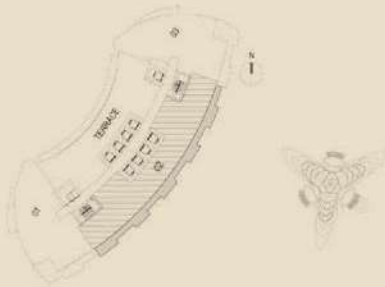
Disclaimer: 1. All room dimensions are measured to structural elements and exclude wall finishes and construction tolerances. 2. All dimensions have been provided by our consultant architects. 3. All materials, dimensions & drawings are approximate. Information is subject to change without notice. 4. Actual suite area may vary from the stated area. Drawings not to scale. The developer reserves the right to make revisions. 5. Calculation of suite area is measured as the area bounded by the centre line of demising or partition walls separating one unit from another unit, the exterior face of all exterior walls, and the exterior face of the corridor wall enclosing the adjoining unit. 6. Calculation of balcony area is measured as the area bounded by the centre line of demising or partition walls separating one unit from another unit, the outmost face of the enclosing guard and the external face of the unit adjoining the balcony. 7. The units are measured at typical floor in the building. Columns may vary in size depending on the floor level.



4 Bedroom

Unit 02

Tower 1



65<sup>th</sup> Floor



SUITE AREA:	317.14 SQ.M (3413.69 SQ.FT)
BALCONY AREA:	84.85 SQ.M (913.32 SQ.FT)
<b>TOTAL AREA:</b>	<b>401.99 SQ.M (4327.01 SQ.FT)</b>

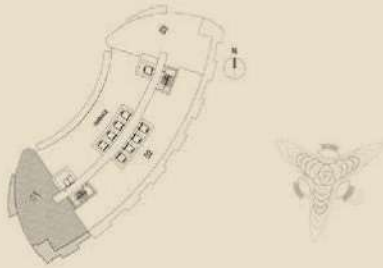
Disclaimer: 1. All room dimensions are measured to structural elements and exclude wall finishes and construction tolerances. 2. All dimensions have been provided by our consultant architects. 3. All materials, dimensions & drawings are approximate. Information is subject to change without notice. 4. Actual suite area may vary from the stated area. Drawings not to scale. The developer reserves the right to make revisions. 5. Calculation of suite area is measured as the area bounded by the centre line of demising or partition walls separating one unit from another unit, the exterior face of all exterior walls, and the exterior face of the corridor wall enclosing the adjoining unit. 6. Calculation of balcony area is measured as the area bounded by the centre line of demising or partition walls separating one unit from another unit, the outmost face of the enclosing guard and the external face of the unit adjoining the balcony. 7. The units are measured at typical floor in the building. Columns may vary in size depending on the floor level.



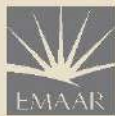
5 Bedroom Duplex  
With Rooftop Terrace

Unit 01

Tower 1



Lower Level (65<sup>th</sup> Floor)



Disclaimer: 1. All room dimensions are measured to structural elements and exclude wall finishes and construction tolerances. 2. All dimensions have been provided by our consultant architects. 3. All materials, dimensions & drawings are approximate. Information is subject to change without notice. 4. Actual suite area may vary from the stated area. Drawings not to scale. The developer reserves the right to make revisions. 5. Calculation of suite area is measured as the area bounded by the centre line of demising or partition walls separating one unit from another unit, the exterior face of all exterior walls, and the exterior face of the corridor wall enclosing the adjoining unit. 6. Calculation of balcony area is measured as the area bounded by the centre line of demising or partition walls separating one unit from another unit, the outmost face of the enclosing guard and the external face of the unit adjoining the balcony. 7. The units are measured at typical floor in the building. Columns may vary in size depending on the floor level.



5 Bedroom Duplex  
With Rooftop Terrace

Unit 01

Tower 1



Upper Level (66<sup>th</sup> Floor)

Disclaimer: 1. All room dimensions are measured to structural elements and exclude wall finishes and construction tolerances. 2. All dimensions have been provided by our consultant architects. 3. All materials, dimensions & drawings are approximate. Information is subject to change without notices. 4. Actual suite area may vary from the stated area. Drawing not to scale. The developer reserves the right to make revisions. 5. Calculation of suite area is measured as the area bounded by the centre line of demising or partition walls separating one unit from another unit, the exterior face of all exterior walls, and the exterior face of the corridor wall enclosing the adjoining unit. 6. Calculation of balcony area is measured as the area bounded by the centre line of demising or partition walls separating one unit from another unit, the outmost face of the enclosing guard and the external face of the unit adjoining the balcony. 7. The units are measured at typical floor in the building. Columns may vary in size depending on the floor level.

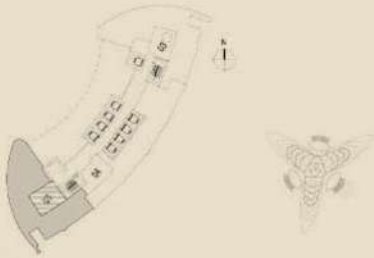




5 Bedroom Duplex  
With Rooftop Terrace

Unit 01

Tower 1



Roof Terrace Level

SUITE AREA:	497.88 SQ.M (5359.14 SQ.FT)
BALCONY AREA:	70.39 SQ.M (757.66 SQ.FT)
TERRACE AREA:	197.59 SQ.M (2126.86 SQ.FT)
<b>TOTAL AREA:</b>	<b>765.86 SQ.M (8243.65 SQ.FT)</b>

Disclaimer: 1. All room dimensions are measured to structural elements and exclude wall finishes and construction tolerances. 2. All dimensions have been provided by our consultant architects. 3. All materials, dimensions & drawings are approximate. Information is subject to change without notice. 4. Actual suite area may vary from the stated area. Drawings not to scale. The developer reserves the right to make revisions. 5. Calculation of suite area is measured as the area bounded by the centre line of demising or partition walls separating one unit from another unit, the exterior face of all exterior walls, and the exterior face of the corridor wall enclosing the adjoining unit. 6. Calculation of balcony area is measured as the area bounded by the centre line of demising or partition walls separating one unit from another unit, the outmost face of the enclosing guard and the external face of the unit adjoining the balcony. 7. The units are measured at typical floor in the building. Columns may vary in size depending on the floor level.



5 Bedroom Duplex  
With Rooftop Terrace

Unit 03

Tower 1



Lower Level (65<sup>th</sup> Floor)



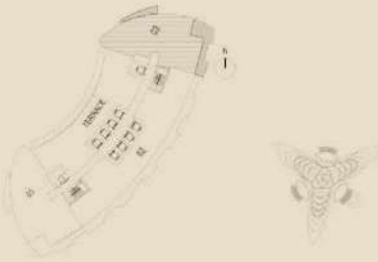
Disclaimer: 1. All room dimensions are measured to structural elements and exclude wall finishes and construction tolerances. 2. All dimensions have been provided by our consultant architects. 3. All materials, dimensions & drawings are approximate. Information is subject to change without notice. 4. Actual suite area may vary from the stated area. Drawings not to scale. The developer reserves the right to make revisions. 5. Calculation of suite area is measured at the area bounded by the centre line of demising or partition walls separating one unit from another unit, the exterior face of all exterior walls, and the exterior face of the corridor wall enclosing the adjoining unit. 6. Calculation of balcony area is measured as the area bounded by the centre line of demising or partition walls separating one unit from another unit, the outmost face of the enclosing guard and the external face of the unit adjoining the balcony. 7. The units are measured at typical floor in the building. Columns may vary in size depending on the floor level.



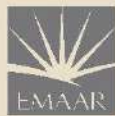
5 Bedroom Duplex  
With Rooftop Terrace

Unit 03

Tower 1



Lower Level (65<sup>th</sup> Floor)



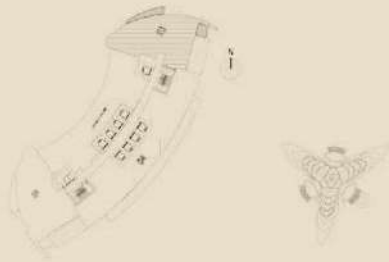
Disclaimer: 1. All room dimensions are measured to structural elements and exclude wall finishes and construction tolerances. 2. All dimensions have been provided by our consultant architects. 3. All materials, dimensions & drawings are approximate. Information is subject to change without notice. 4. Actual suite area may vary from the stated area. Drawings not to scale. The developer reserves the right to make revisions. 5. Calculation of suite area is measured at the area bounded by the centre line of demising or partition walls separating one unit from another unit, the exterior face of all exterior walls, and the exterior face of the corridor wall enclosing the adjoining unit. 6. Calculation of balcony area is measured as the area bounded by the centre line of demising or partition walls separating one unit from another unit, the outmost face of the enclosing guard and the external face of the unit adjoining the balcony. 7. The units are measured at typical floor in the building. Columns may vary in size depending on the floor level.



5 Bedroom Duplex  
With Rooftop Terrace

Unit 03

Tower 1



Upper Level (66<sup>th</sup> Floor)

Disclaimer: 1. All room dimensions are measured to structural elements and exclude wall finishes and construction tolerances. 2. All dimensions have been provided by our consultant architects. 3. All materials, dimensions & drawings are approximate. Information is subject to change without notice. 4. Actual suite area may vary from the stated area. Drawings not to scale. The developer reserves the right to make revisions. 5. Calculation of suite area is measured as the area bounded by the centre line of demising or partition walls separating one unit from another unit, the exterior face of all exterior walls, and the exterior face of the corridor wall enclosing the adjoining unit. 6. Calculation of balcony area is measured as the area bounded by the centre line of demising or partition walls separating one unit from another unit, the outmost face of the enclosing guard and the external face of the unit adjoining the balcony. 7. The units are measured at typical floor in the building. Columns may vary in size depending on the floor level.



5 Bedroom Duplex  
With Rooftop Terrace

Unit 03

Tower 1



Roof Terrace Level

SUITE AREA:	489.92 SQ.M (5273.46 SQ.FT)
BALCONY AREA:	72.67 SQ.M (782.21 SQ.FT)
TERRACE AREA:	206.74 SQ.M (2225.34 SQ.FT)
<b>TOTAL AREA:</b>	<b>769.33 SQ.M (8281.00 SQ.FT)</b>

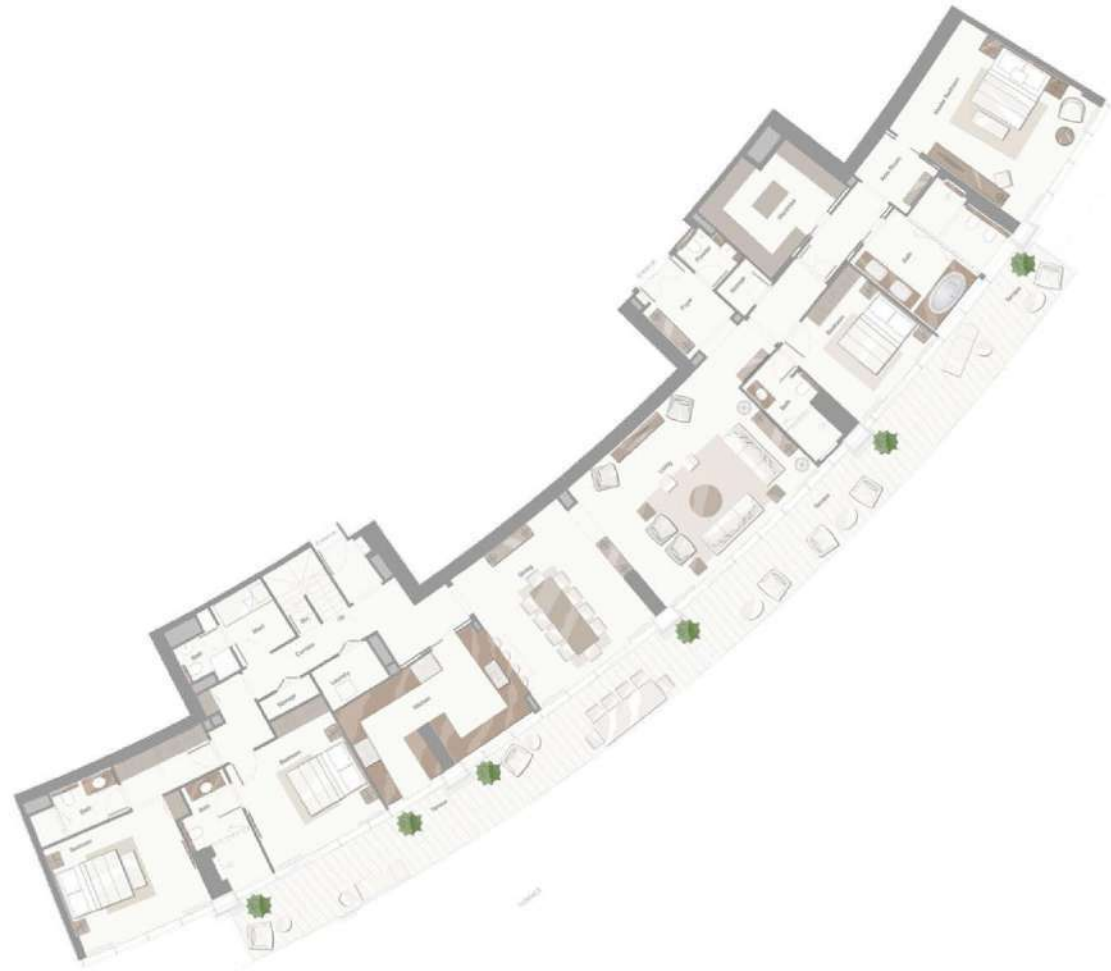
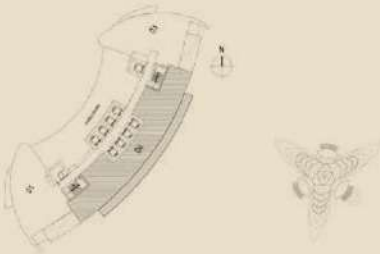
Disclaimer: 1. All room dimensions are measured to structural elements and exclude wall finishes and construction tolerances. 2. All dimensions have been provided by our consultant architects. 3. All materials, dimensions & drawings are approximate. Information is subject to change without notice. 4. Actual suite area may vary from the stated area. Drawings not to scale. The developer reserves the right to make revisions. 5. Calculation of suite area is measured as the area bounded by the centre line of demarcating or partition walls separating one unit from another unit, the exterior face of all exterior walls, and the exterior face of the corridor wall enclosing the adjoining unit. 6. Calculation of balcony area is measured as the area bounded by the centre line of demarcating or partition walls separating one unit from another unit, the outmost face of the enclosing guard and the external face of the unit adjoining the balcony. 7. The units are measured at typical floor in the building. Columns may vary in size depending on the floor level.



4 Bedroom With  
Rooftop Terrace

Unit 04

Tower 1



66<sup>th</sup> Floor



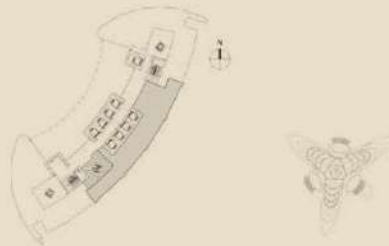
Disclaimer: 1. All room dimensions are measured to structural elements and exclude wall finishes and construction tolerances. 2. All dimensions have been provided by our consultant architects. 3. All materials, dimensions & drawings are approximate. Information is subject to change without notice. 4. Actual suite area may vary from the stated area. Drawings not to scale. The developer reserves the right to make revisions. 5. Calculation of suite area is measured at the area bounded by the centre line of demising or partition walls separating one unit from another unit, the exterior face of all exterior walls, and the exterior face of the corridor wall enclosing the adjoining unit. 6. Calculation of balcony area is measured as the area bounded by the centre line of demising or partition walls separating one unit from another unit, the outermost face of the enclosing guard and the external face of the unit adjoining the balcony. 7. The units are measured at typical floor in the building. (Columns may vary in size depending on the floor level).



4 Bedroom With  
Rooftop Terrace

Unit 04

Tower 1



Roof Terrace Level

SUITE AREA:	362.66 SQ.M (3903.65 SQ.FT)
BALCONY AREA:	80.31 SQ.M (864.43 SQ.FT)
TERRACE AREA:	188.52 SQ.M (2029.22 SQ.FT)
<b>TOTAL AREA:</b>	<b>631.49 SQ.M (6797.30 SQ.FT)</b>

Disclaimer: 1. All room dimensions are measured to structural elements and exclude wall finishes and construction tolerances. 2. All dimensions have been provided by our consultant architects. 3. All material dimensions & drawings are approximate. Information is subject to change without notice. 4. Actual suite area may vary from the stated area. Drawings not to scale. The developer reserves the right to make revisions. 5. Calculation of suite area is measured as the area bounded by the centre line of demising or partition walls separating one unit from another unit, the exterior face of all exterior walls, and the exterior face of the corridor wall enclosing the adjoining unit. 6. Calculation of balcony area is measured as the area bounded by the centre line of demising or partition walls separating one unit from another unit, the outmost face of the enclosing guard and the external face of the unit adjoining the balcony. 7. The units are measured at typical floor in the building. Columns may vary in size depending on the floor level.

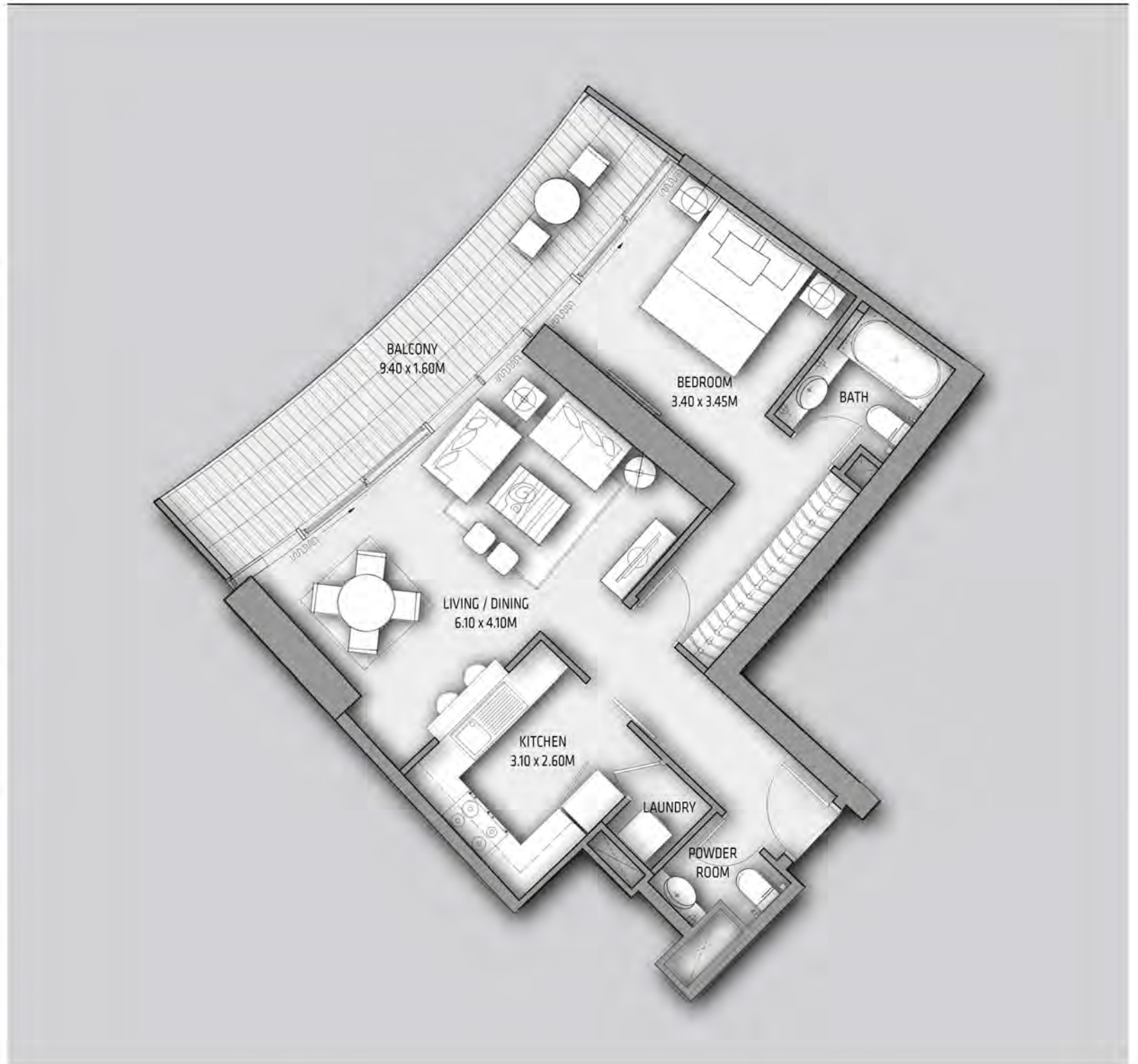


1 Bedroom

Unit 01

Level 06 - 23

Tower 1



SUITE AREA:	71.07 SQ.M	(765.00 SQ.FT)
BALCONY AREA:	14.90 SQ.M	(160.38 SQ.FT)
<b>TOTAL AREA:</b>	<b>85.97 SQ.M</b>	<b>(925.38 SQ.FT)</b>

Disclaimer: 1. All room dimensions are measured to structural elements and exclude wall finishes and construction tolerances. 2. All dimensions have been provided by our consultant architects. 3. All materials, dimensions & drawings are approximate. Information is subject to change without notice. 4. Actual suite area may vary from the stated area. Drawings not to scale. The developer reserves the right to make revisions. 5. Calculation of suite area is measured as the area bounded by the centre line of demising or partition walls separating one unit from another unit, the exterior face of all exterior walls, and the exterior face of the corridor wall enclosing the adjoining unit. 6. Calculation of balcony area is measured as the area bounded by the centre line of demising or partition walls separating one unit from another unit, the outmost face of the enclosing guard and the external face of the unit adjoining the balcony. 7. The units are measured at typical floor in the building. Columns may vary in size depending on the floor level.



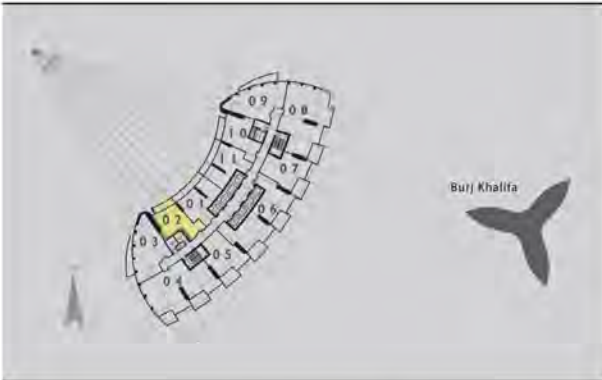


1 Bedroom

Unit 02

Level 06 - 23

Tower 1



SUITE AREA:	64.09 SQ.M	(689.86 SQ.FT)
BALCONY AREA:	8.96 SQ.M	(96.45 SQ.FT)
<b>TOTAL AREA:</b>	<b>73.05 SQ.M</b>	<b>(786.31 SQ.FT)</b>

Disclaimer: 1. All room dimensions are measured to structural elements and exclude wall finishes and construction tolerances. 2. All dimensions have been provided by our consultant architects. 3. All materials, dimensions & drawings are approximate. Information is subject to change without notice. 4. Actual suite area may vary from the stated area. Drawings not to scale. The developer reserves the right to make revisions. 5. Calculation of suite area is measured as the area bounded by the centre line of demising or partition walls separating one unit from another unit, the exterior face of all exterior walls, and the exterior face of the corridor wall enclosing the adjoining unit. 6. Calculation of balcony area is measured as the area bounded by the centre line of demising or partition walls separating one unit from another unit, the outmost face of the enclosing guard and the external face of the unit adjoining the balcony. 7. The units are measured at typical floor in the building. Columns may vary in size depending on the floor level.



1 Bedroom

Unit 05

Level

4, 6, 8, 10, 12, 14, 16, 18, 20, 22, 24

Tower 1



Burj Khalifa



SUITE AREA:	72.77 SQ.M	(783.30 SQ.FT)
BALCONY AREA:	10.44 SQ.M	(112.38 SQ.FT)
<b>TOTAL AREA:</b>	<b>83.21 SQ.M</b>	<b>(895.68 SQ.FT)</b>

Disclaimer: 1. All room dimensions are measured to structural elements and exclude wall finishes and construction tolerances. 2. All dimensions have been provided by our consultant architects. 3. All materials, dimensions & drawings are approximate. Information is subject to change without notice. 4. Actual suite area may vary from the stated area. Drawings not to scale. The developer reserves the right to make revisions. 5. Calculation of suite area is measured as the area bounded by the centre line of demising or partition walls separating one unit from another unit, the exterior face of all exterior walls, and the exterior face of the corridor wall enclosing the adjoining unit. 6. Calculation of balcony area is measured as the area bounded by the centre line of demising or partition walls separating one unit from another unit, the outmost face of the enclosing guard and the external face of the unit adjoining the balcony. 7. The units are measured at typical floor in the building. Columns may vary in size depending on the floor level.



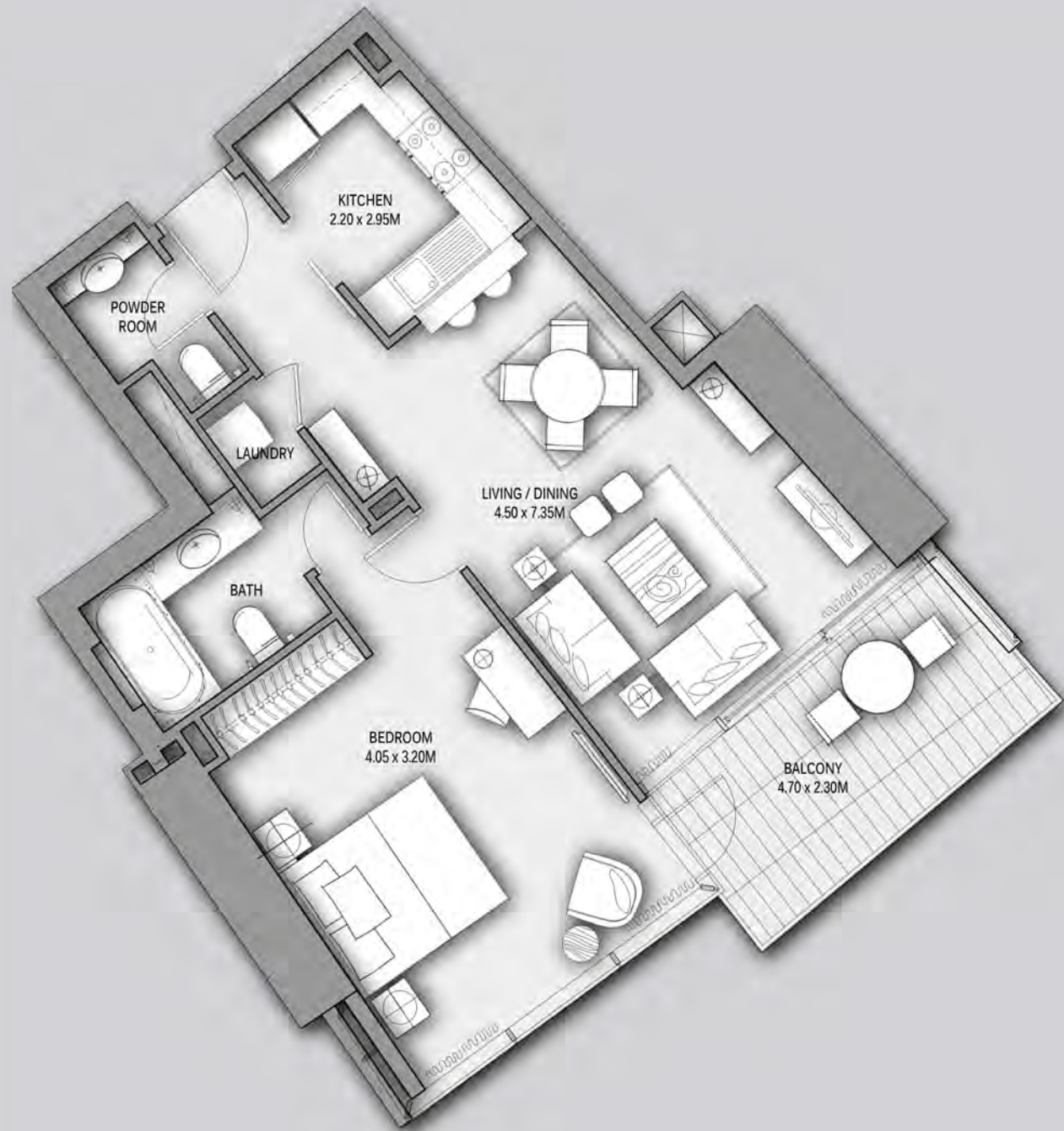
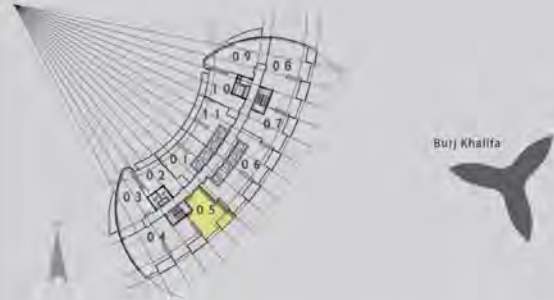
1 Bedroom

Unit 05

Level

5, 7, 9, 11, 13, 15, 17, 19, 21, 23, 25

Tower 1



SUITE AREA:	72.77 SQ.M	(783.30 SQ.FT)
BALCONY AREA:	10.44 SQ.M	(112.38 SQ.FT)
<b>TOTAL AREA:</b>	<b>83.21 SQ.M</b>	<b>(895.68 SQ.FT)</b>

Disclaimer: 1. All room dimensions are measured to structural elements and exclude wall finishes and construction tolerances. 2. All dimensions have been provided by our consultant architects. 3. All materials, dimensions & drawings are approximate. Information is subject to change without notice. 4. Actual suite area may vary from the stated area. Drawings not to scale. The developer reserves the right to make revisions. 5. Calculation of suite area is measured as the area bounded by the centre line of demising or partition walls separating one unit from another unit, the exterior face of all exterior walls, and the exterior face of the corridor wall enclosing the adjoining unit. 6. Calculation of balcony area is measured as the area bounded by the centre line of demising or partition walls separating one unit from another unit, the outmost face of the enclosing guard and the external face of the unit adjoining the balcony. 7. The units are measured at typical floor in the building. Columns may vary in size depending on the floor level.



# 1 Bedroom

## Unit 07

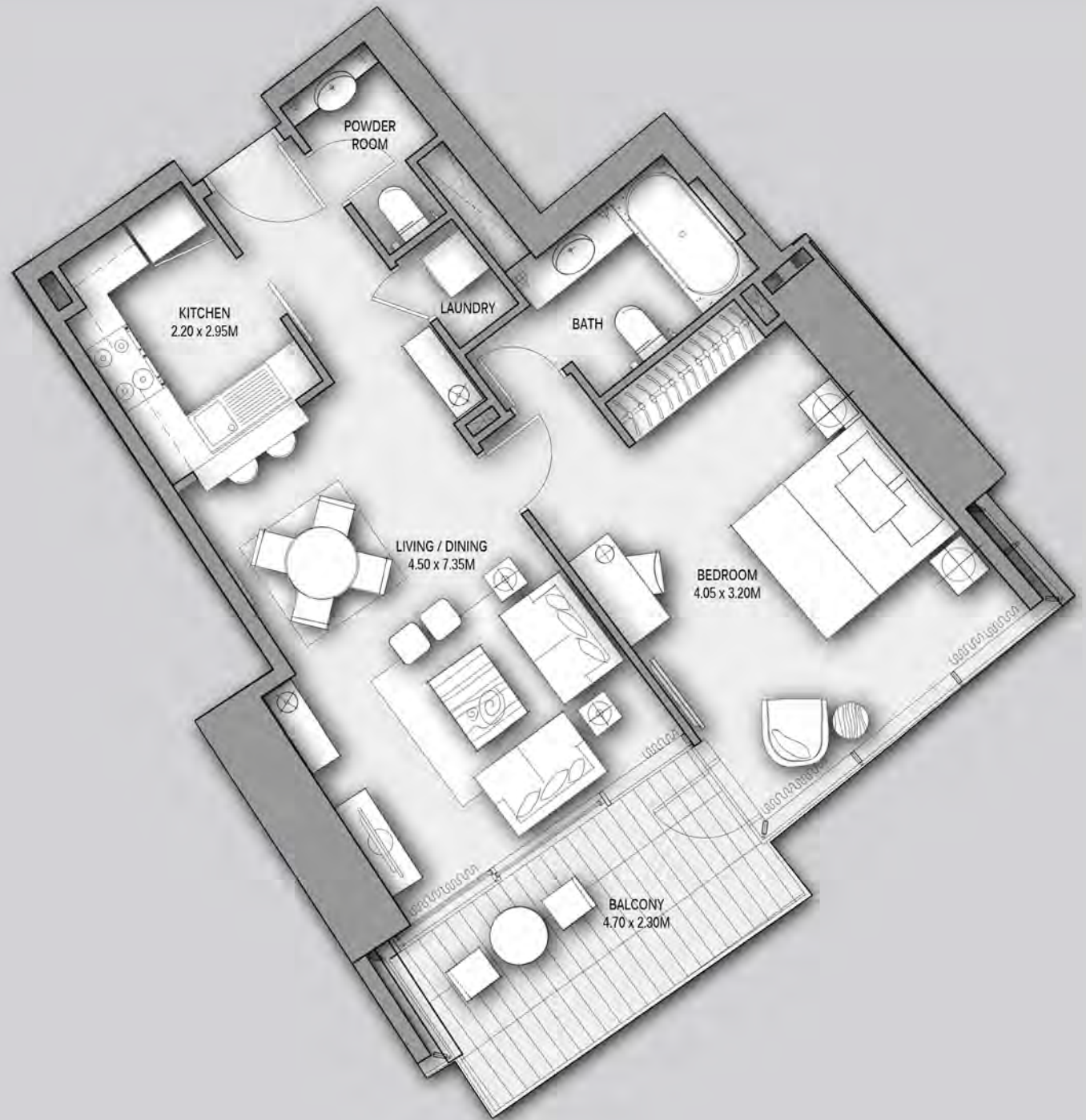
### Level

4, 6, 8, 10, 12, 14, 16, 18, 20, 22, 24

## Tower 1



Burj Khalifa



SUITE AREA:	72.77 SQ.M	(783.30 SQ.FT)
BALCONY AREA:	10.44 SQ.M	(112.38 SQ.FT)
<b>TOTAL AREA:</b>	<b>83.21 SQ.M</b>	<b>(895.68 SQ.FT)</b>

Disclaimer: 1. All room dimensions are measured to structural elements and exclude wall finishes and construction tolerances. 2. All dimensions have been provided by our consultant architects. 3. All materials, dimensions & drawings are approximate. Information is subject to change without notice. 4. Actual suite area may vary from the stated area. Drawings not to scale. The developer reserves the right to make revisions. 5. Calculation of suite area is measured as the area bounded by the centre line of demising or partition walls separating one unit from another unit, the exterior face of all exterior walls, and the exterior face of the corridor wall enclosing the adjoining unit. 6. Calculation of balcony area is measured as the area bounded by the centre line of demising or partition walls separating one unit from another unit, the outmost face of the enclosing guard and the external face of the unit adjoining the balcony. 7. The units are measured at typical floor in the building. Columns may vary in size depending on the floor level.



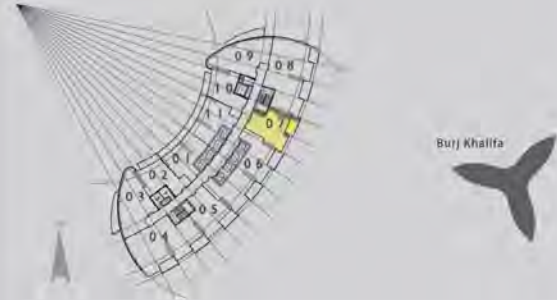
1 Bedroom

Unit 07

Level

5, 7, 9, 11, 13, 15, 17, 19, 21, 23, 25

Tower 1



Burj Khalifa



SUITE AREA:	72.77 SQ.M	(783.30 SQ.FT)
BALCONY AREA:	10.44 SQ.M	(112.38 SQ.FT)
<b>TOTAL AREA:</b>	<b>83.21 SQ.M</b>	<b>(895.68 SQ.FT)</b>

Disclaimer: 1. All room dimensions are measured to structural elements and exclude wall finishes and construction tolerances. 2. All dimensions have been provided by our consultant architects. 3. All materials, dimensions & drawings are approximate. Information is subject to change without notice. 4. Actual suite area may vary from the stated area. Drawings not to scale. The developer reserves the right to make revisions. 5. Calculation of suite area is measured as the area bounded by the centre line of demising or partition walls separating one unit from another unit, the exterior face of all exterior walls, and the exterior face of the corridor wall enclosing the adjoining unit. 6. Calculation of balcony area is measured as the area bounded by the centre line of demising or partition walls separating one unit from another unit, the outmost face of the enclosing guard and the external face of the unit adjoining the balcony. 7. The units are measured at typical floor in the building. Columns may vary in size depending on the floor level.

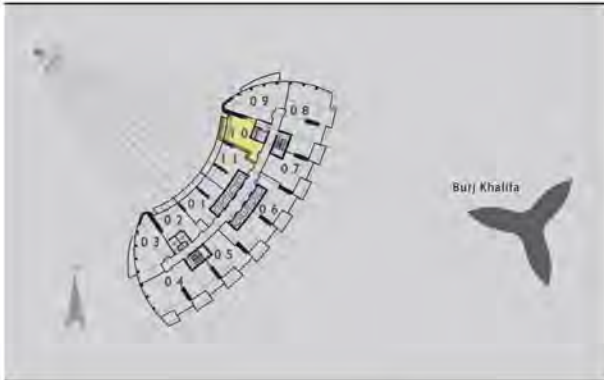


1 Bedroom

Unit 10

Level 06 - 23

Tower 1



SUITE AREA:	64.45 SQ.M	(693.74 SQ.FT)
BALCONY AREA:	8.96 SQ.M	(96.45 SQ.FT)
<b>TOTAL AREA:</b>	<b>73.41 SQ.M</b>	<b>(790.19 SQ.FT)</b>

Disclaimer: 1. All room dimensions are measured to structural elements and exclude wall finishes and construction tolerances. 2. All dimensions have been provided by our consultant architects. 3. All materials, dimensions & drawings are approximate. Information is subject to change without notice. 4. Actual suite area may vary from the stated area. Drawings not to scale. The developer reserves the right to make revisions. 5. Calculation of suite area is measured as the area bounded by the centre line of demising or partition walls separating one unit from another unit, the exterior face of all exterior walls, and the exterior face of the corridor wall enclosing the adjoining unit. 6. Calculation of balcony area is measured as the area bounded by the centre line of demising or partition walls separating one unit from another unit, the outmost face of the enclosing guard and the external face of the unit adjoining the balcony. 7. The units are measured at typical floor in the building. Columns may vary in size depending on the floor level.



1 Bedroom

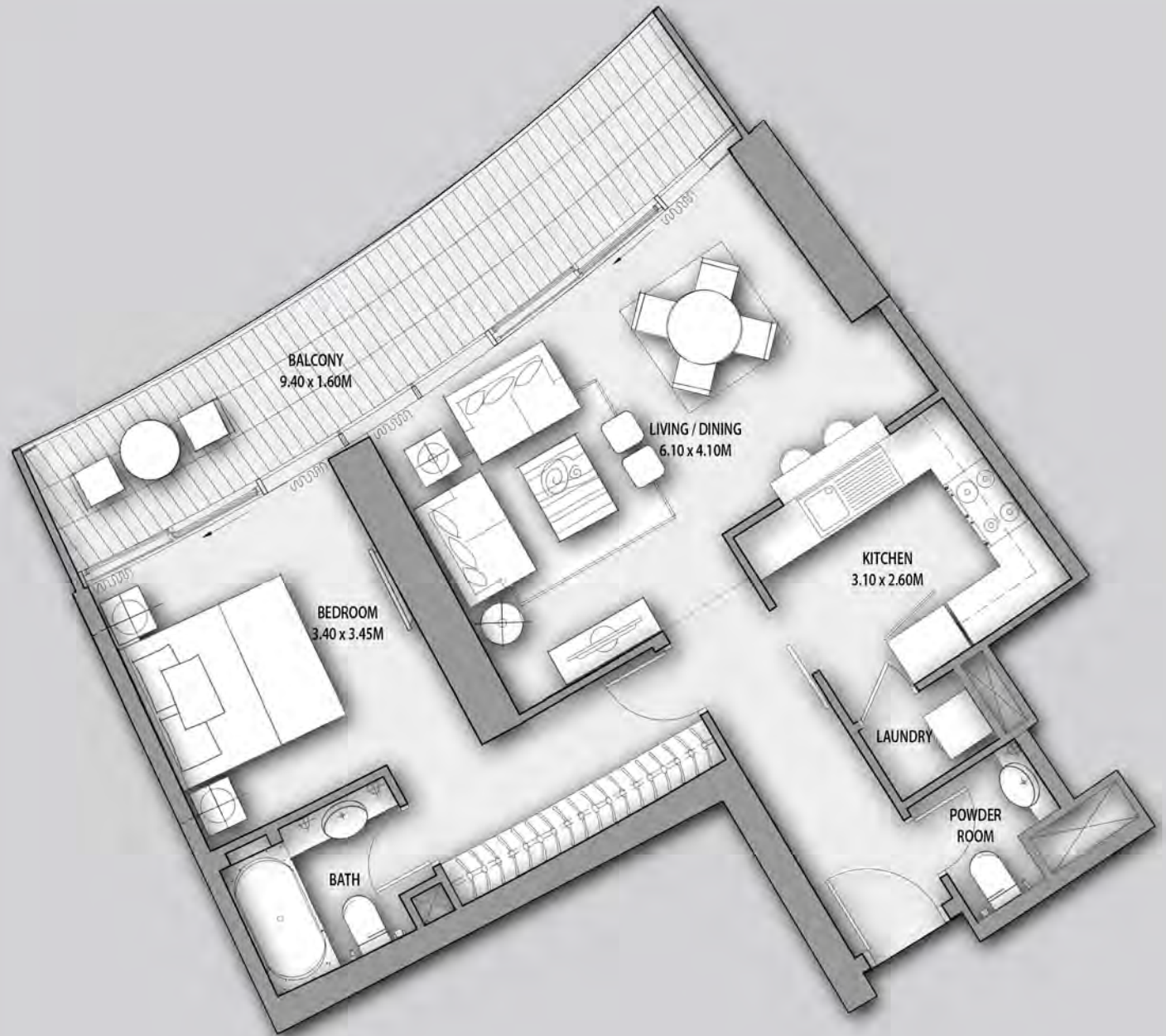
Unit 11

Level 06 - 23

Tower 1



Burj Khalifa



SUITE AREA:	71.07 SQ.M	(765.00 SQ.FT)
BALCONY AREA:	14.90 SQ.M	(160.38 SQ.FT)
<b>TOTAL AREA:</b>	<b>85.97 SQ.M</b>	<b>(925.38 SQ.FT)</b>

Disclaimer: 1. All room dimensions are measured to structural elements and exclude wall finishes and construction tolerances. 2. All dimensions have been provided by our consultant architects. 3. All materials, dimensions & drawings are approximate. Information is subject to change without notice. 4. Actual suite area may vary from the stated area. Drawings not to scale. The developer reserves the right to make revisions. 5. Calculation of suite area is measured as the area bounded by the centre line of demising or partition walls separating one unit from another unit, the exterior face of all exterior walls, and the exterior face of the corridor wall enclosing the adjoining unit. 6. Calculation of balcony area is measured as the area bounded by the centre line of demising or partition walls separating one unit from another unit, the outmost face of the enclosing guard and the external face of the unit adjoining the balcony. 7. The units are measured at typical floor in the building. Columns may vary in size depending on the floor level.

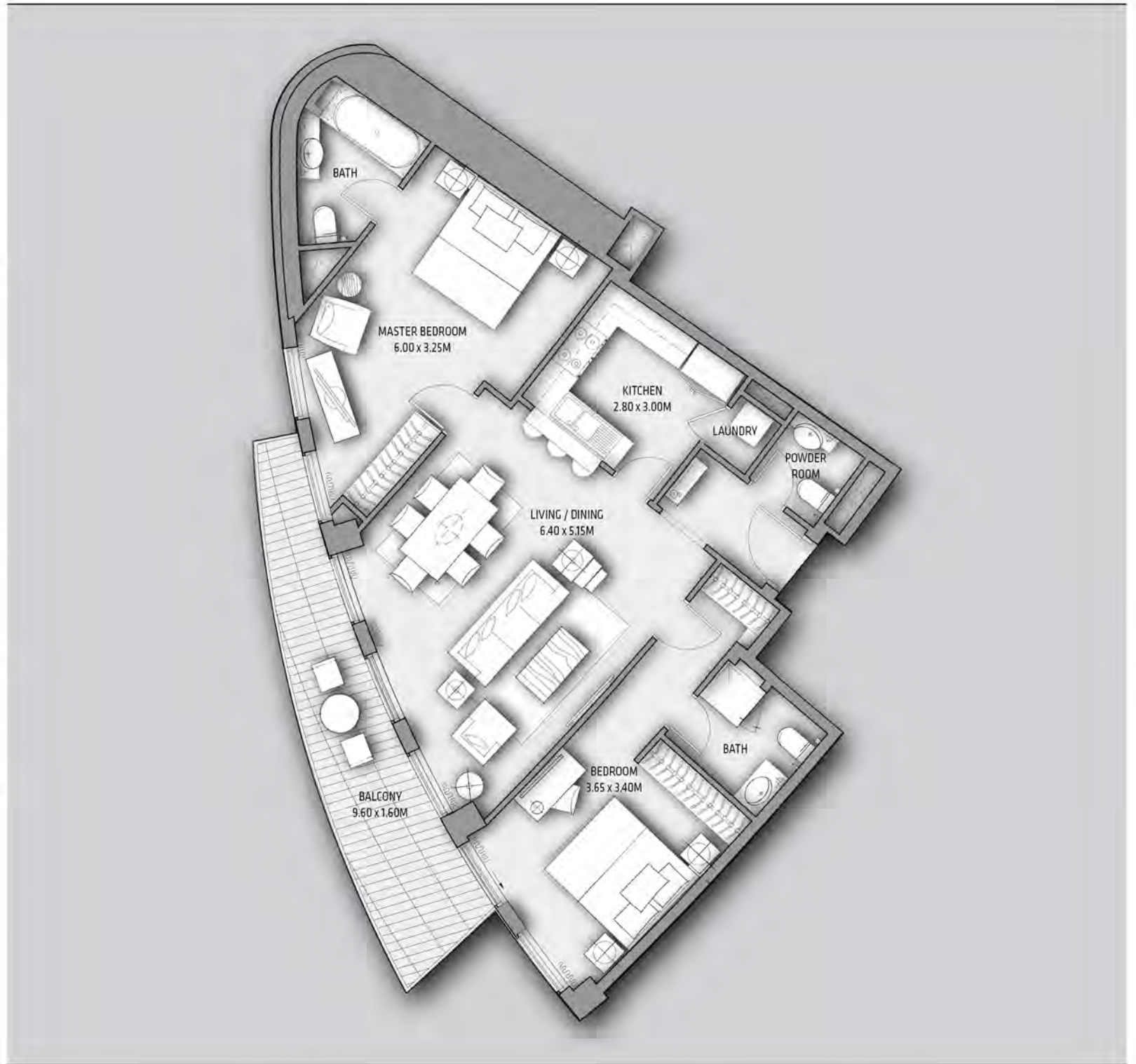


2 Bedroom

Unit 03

Level 04 - 25

Tower 1



SUITE AREA:	103.23 SQ.M (1111.17 SQ.FT)
BALCONY AREA:	14.69 SQ.M (158.12 SQ.FT)
<b>TOTAL AREA:</b>	<b>117.92 SQ.M (1269.29 SQ.FT)</b>

Disclaimer: 1. All room dimensions are measured to structural elements and exclude wall finishes and construction tolerances. 2. All dimensions have been provided by our consultant architects. 3. All materials, dimensions & drawings are approximate. Information is subject to change without notice. 4. Actual suite area may vary from the stated area. Drawings not to scale. The developer reserves the right to make revisions. 5. Calculation of suite area is measured as the area bounded by the centre line of demising or partition walls separating one unit from another unit, the exterior face of all exterior walls, and the exterior face of the corridor wall enclosing the adjoining unit. 6. Calculation of balcony area is measured as the area bounded by the centre line of demising or partition walls separating one unit from another unit, the outmost face of the enclosing guard and the external face of the unit adjoining the balcony. 7. The units are measured at typical floor in the building. Columns may vary in size depending on the floor level.





2 Bedroom

Unit 06

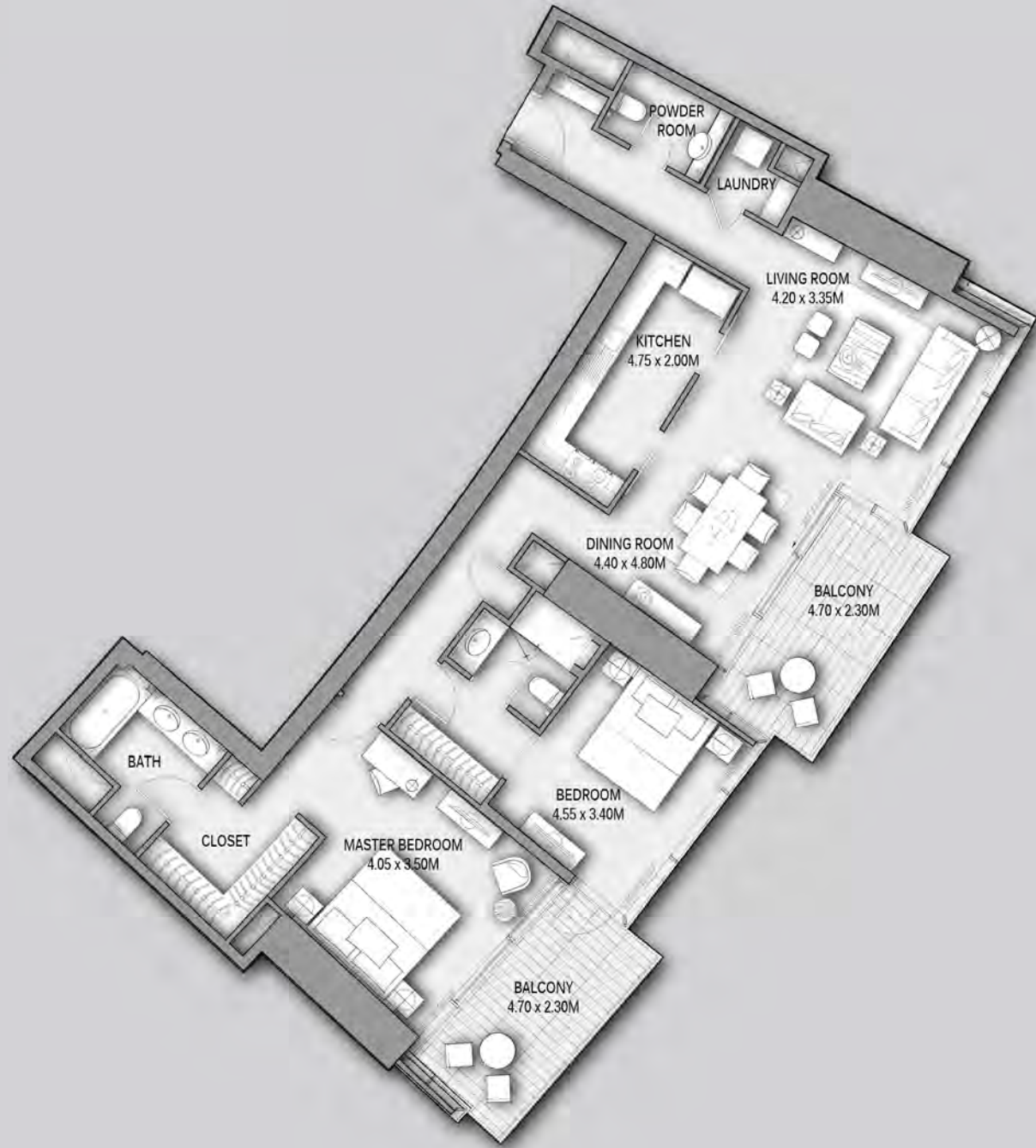
Level

4, 6, 8, 10, 12, 14, 16, 18, 20, 22, 24

Tower 1



Burj Khalifa



SUITE AREA:	138.17 SQ.M (1487.26 SQ.FT)
BALCONY AREA:	20.83 SQ.M (224.21 SQ.FT)
<b>TOTAL AREA:</b>	<b>159.00 SQ.M (1711.47 SQ.FT)</b>

Disclaimer: 1. All room dimensions are measured to structural elements and exclude wall finishes and construction tolerances. 2. All dimensions have been provided by our consultant architects. 3. All materials, dimensions & drawings are approximate. Information is subject to change without notice. 4. Actual suite area may vary from the stated area. Drawings not to scale. The developer reserves the right to make revisions. 5. Calculation of suite area is measured as the area bounded by the centre line of demising or partition walls separating one unit from another unit, the exterior face of all exterior walls, and the exterior face of the corridor wall enclosing the adjoining unit. 6. Calculation of balcony area is measured as the area bounded by the centre line of demising or partition walls separating one unit from another unit, the outmost face of the enclosing guard and the external face of the unit adjoining the balcony. 7. The units are measured at typical floor in the building. Columns may vary in size depending on the floor level.



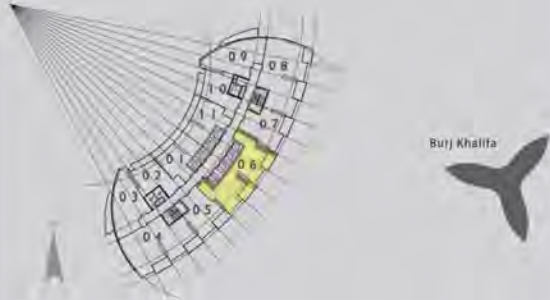
2 Bedroom

Unit 06

Level

5, 7, 9, 11, 13, 15, 17, 19, 21, 23, 25

Tower 1



SUITE AREA:	138.17 SQ.M (1487.26 SQ.FT)
BALCONY AREA:	20.83 SQ.M (224.21 SQ.FT)
<b>TOTAL AREA:</b>	<b>159.00 SQ.M (1711.47 SQ.FT)</b>

Disclaimer: 1. All room dimensions are measured to structural elements and exclude wall finishes and construction tolerances. 2. All dimensions have been provided by our consultant architects. 3. All materials, dimensions & drawings are approximate. Information is subject to change without notice. 4. Actual suite area may vary from the stated area. Drawings not to scale. The developer reserves the right to make revisions. 5. Calculation of suite area is measured as the area bounded by the centre line of demising or partition walls separating one unit from another unit, the exterior face of all exterior walls, and the exterior face of the corridor wall enclosing the adjoining unit. 6. Calculation of balcony area is measured as the area bounded by the centre line of demising or partition walls separating one unit from another unit, the outmost face of the enclosing guard and the external face of the unit adjoining the balcony. 7. The units are measured at typical floor in the building. Columns may vary in size depending on the floor level.



2 Bedroom

Unit 09

Level 04 - 25

Tower 1



Burj Khalifa



SUITE AREA:	103.23 SQ.M (1111.17 SQ.FT)
BALCONY AREA:	14.69 SQ.M (158.12 SQ.FT)
<b>TOTAL AREA:</b>	<b>117.92 SQ.M (1269.29 SQ.FT)</b>

Disclaimer: 1. All room dimensions are measured to structural elements and exclude wall finishes and construction tolerances. 2. All dimensions have been provided by our consultant architects. 3. All materials, dimensions & drawings are approximate. Information is subject to change without notice. 4. Actual suite area may vary from the stated area. Drawings not to scale. The developer reserves the right to make revisions. 5. Calculation of suite area is measured as the area bounded by the centre line of demising or partition walls separating one unit from another unit, the exterior face of all exterior walls, and the exterior face of the corridor wall enclosing the adjoining unit. 6. Calculation of balcony area is measured as the area bounded by the centre line of demising or partition walls separating one unit from another unit, the outmost face of the enclosing guard and the external face of the unit adjoining the balcony. 7. The units are measured at typical floor in the building. Columns may vary in size depending on the floor level.



3 Bedroom

Unit 04

Level

4, 6, 8, 10, 12, 14, 16, 18, 20, 22, 24

Tower 1



Burj Khalifa



SUITE AREA:	159.82 SQ.M (1720.30 SQ.FT)
BALCONY AREA:	18.45 SQ.M (198.60 SQ.FT)
<b>TOTAL AREA:</b>	<b>178.27 SQ.M (1918.90 SQ.FT)</b>

Disclaimer: 1. All room dimensions are measured to structural elements and exclude wall finishes and construction tolerances. 2. All dimensions have been provided by our consultant architects. 3. All materials, dimensions & drawings are approximate. Information is subject to change without notice. 4. Actual suite area may vary from the stated area. Drawings not to scale. The developer reserves the right to make revisions. 5. Calculation of suite area is measured as the area bounded by the centre line of demising or partition walls separating one unit from another unit, the exterior face of all exterior walls, and the exterior face of the corridor wall enclosing the adjoining unit. 6. Calculation of balcony area is measured as the area bounded by the centre line of demising or partition walls separating one unit from another unit, the outmost face of the enclosing guard and the external face of the unit adjoining the balcony. 7. The units are measured at typical floor in the building. Columns may vary in size depending on the floor level.



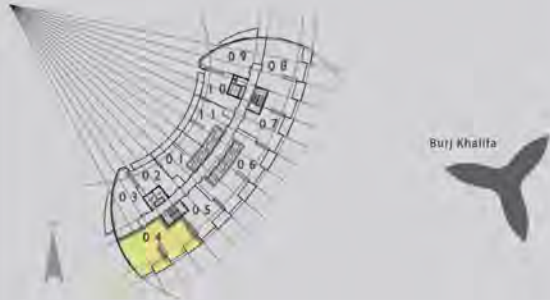
3 Bedroom

Unit 04

Level

5, 7, 9, 11, 13, 15, 17, 19, 21, 23, 25

Tower 1



SUITE AREA:	158.07 SQ.M (1701.47 SQ.FT)
BALCONY AREA:	20.80 SQ.M (223.89 SQ.FT)
<b>TOTAL AREA:</b>	<b>178.87 SQ.M (1925.36 SQ.FT)</b>

Disclaimer: 1. All room dimensions are measured to structural elements and exclude wall finishes and construction tolerances. 2. All dimensions have been provided by our consultant architects. 3. All materials, dimensions & drawings are approximate. Information is subject to change without notice. 4. Actual suite area may vary from the stated area. Drawings not to scale. The developer reserves the right to make revisions. 5. Calculation of suite area is measured as the area bounded by the centre line of demising or partition walls separating one unit from another unit, the exterior face of all exterior walls, and the exterior face of the corridor wall enclosing the adjoining unit. 6. Calculation of balcony area is measured as the area bounded by the centre line of demising or partition walls separating one unit from another unit, the outmost face of the enclosing guard and the external face of the unit adjoining the balcony. 7. The units are measured at typical floor in the building. Columns may vary in size depending on the floor level.



**3 Bedroom**

**Unit 08**

**Level**

4, 6, 8, 10, 12, 14, 16, 18, 20, 22, 24

**Tower 1**



Burj Khalifa



SUITE AREA:	158.07 SQ.M (1701.47 SQ.FT)
BALCONY AREA:	20.80 SQ.M (223.89 SQ.FT)
<b>TOTAL AREA:</b>	<b>178.87 SQ.M (1925.36 SQ.FT)</b>

Disclaimer: 1. All room dimensions are measured to structural elements and exclude wall finishes and construction tolerances. 2. All dimensions have been provided by our consultant architects. 3. All materials, dimensions & drawings are approximate. Information is subject to change without notice. 4. Actual suite area may vary from the stated area. Drawings not to scale. The developer reserves the right to make revisions. 5. Calculation of suite area is measured as the area bounded by the centre line of demising or partition walls separating one unit from another unit, the exterior face of all exterior walls, and the exterior face of the corridor wall enclosing the adjoining unit. 6. Calculation of balcony area is measured as the area bounded by the centre line of demising or partition walls separating one unit from another unit, the outmost face of the enclosing guard and the external face of the unit adjoining the balcony. 7. The units are measured at typical floor in the building. Columns may vary in size depending on the floor level.



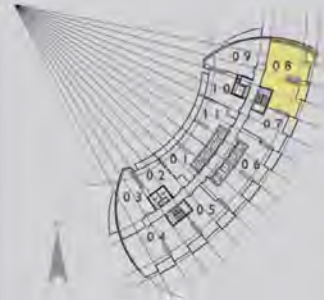
3 Bedroom

Unit 08

Level

5, 7, 9, 11, 13, 15, 17, 19, 21, 23, 25

Tower 1



Burj Khalifa



SUITE AREA:	159.82 SQ.M (1720.30 SQ.FT)
BALCONY AREA:	18.45 SQ.M (198.60 SQ.FT)
<b>TOTAL AREA:</b>	<b>178.27 SQ.M (1918.90 SQ.FT)</b>

Disclaimer: 1. All room dimensions are measured to structural elements and exclude wall finishes and construction tolerances. 2. All dimensions have been provided by our consultant architects. 3. All materials, dimensions & drawings are approximate. Information is subject to change without notice. 4. Actual suite area may vary from the stated area. Drawings not to scale. The developer reserves the right to make revisions. 5. Calculation of suite area is measured as the area bounded by the centre line of demising or partition walls separating one unit from another unit, the exterior face of all exterior walls, and the exterior face of the corridor wall enclosing the adjoining unit. 6. Calculation of balcony area is measured as the area bounded by the centre line of demising or partition walls separating one unit from another unit, the outmost face of the enclosing guard and the external face of the unit adjoining the balcony. 7. The units are measured at typical floor in the building. Columns may vary in size depending on the floor level.

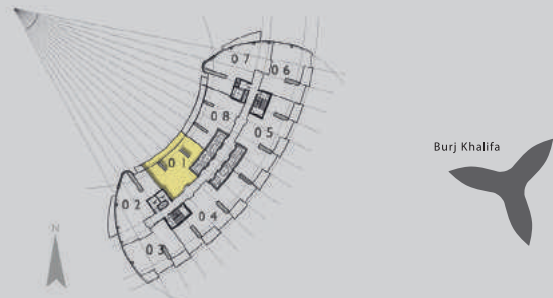


2 Bedroom

Unit 01

Level  
26 - 44, 47 - 60

Tower 1



Burj Khalifa



SUITE AREA:  
BALCONY AREA:

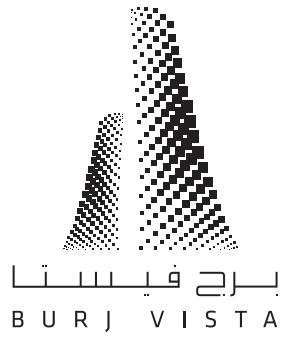
108.42 SQ.M (1167.03 SQ.FT)  
20.72 SQ.M (223.03 SQ.FT)

TOTAL AREA:

129.14 SQ.M (1390.06 SQ.FT)

Disclaimer: 1. All room dimensions are measured to structural elements and exclude wall finishes and construction tolerances. 2. All dimensions have been provided by our consultant architects. 3. All materials, dimensions & drawings are approximate. Information is subject to change without notice. 4. Actual suite area may vary from the stated area. Drawings not to scale. The developer reserves the right to make revisions. 5. Calculation of suite area is measured as the area bounded by the centre line of demising or partition walls separating one unit from another unit, the exterior face of all exterior walls, and the exterior face of the corridor wall enclosing the adjoining unit. 6. Calculation of balcony area is measured as the area bounded by the centre line of demising or partition walls separating one unit from another unit, the outmost face of the enclosing guard and the external face of the unit adjoining the balcony. 7. The units are measured at typical floor in the building. Columns may vary in size depending on the floor level.



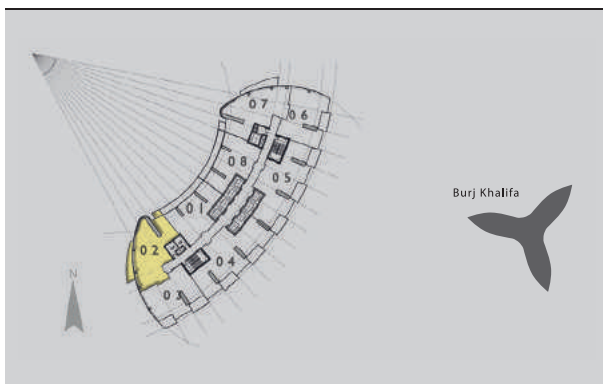


2 Bedroom

Unit 02

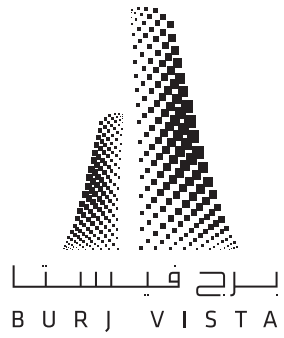
Level  
26 - 44, 47 - 60

Tower 1



SUITE AREA:	112.14 SQ.M (1207.07 SQ.FT)
BALCONY AREA:	17.95 SQ.M (193.21 SQ.FT)
<b>TOTAL AREA:</b>	<b>130.09 SQ.M (1400.29 SQ.FT)</b>

Disclaimer: 1. All room dimensions are measured to structural elements and exclude wall finishes and construction tolerances. 2. All dimensions have been provided by our consultant architects. 3. All materials, dimensions & drawings are approximate. Information is subject to change without notice. 4. Actual suite area may vary from the stated area. Drawings not to scale. The developer reserves the right to make revisions. 5. Calculation of suite area is measured as the area bounded by the centre line of demising or partition walls separating one unit from another unit, the exterior face of all exterior walls, and the exterior face of the corridor wall enclosing the adjoining unit. 6. Calculation of balcony area is measured as the area bounded by the centre line of demising or partition walls separating one unit from another unit, the outmost face of the enclosing guard and the external face of the unit adjoining the balcony. 7. The units are measured at typical floor in the building. Columns may vary in size depending on the floor level.

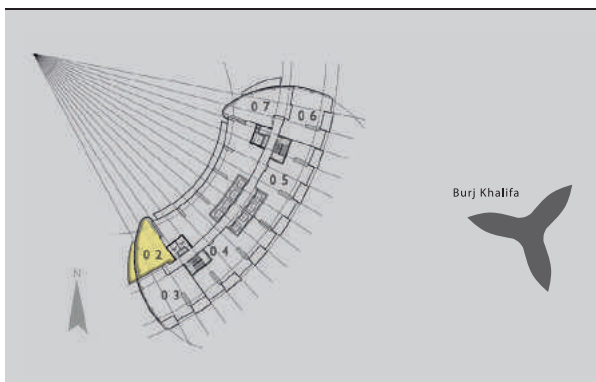


1 Bedroom

Unit 02

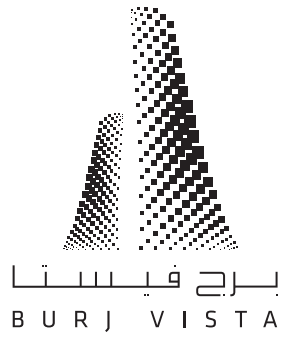
Level  
45, 46, 61, 62, 63

Tower 1



SUITE AREA:	84.85 SQ.M (913.33 SQ.FT)
BALCONY AREA:	14.70 SQ.M (158.23 SQ.FT)
<b>TOTAL AREA:</b>	<b>99.55 SQ.M (1071.56 SQ.FT)</b>

Disclaimer: 1. All room dimensions are measured to structural elements and exclude wall finishes and construction tolerances. 2. All dimensions have been provided by our consultant architects. 3. All materials, dimensions & drawings are approximate. Information is subject to change without notice. 4. Actual suite area may vary from the stated area. Drawings not to scale. The developer reserves the right to make revisions. 5. Calculation of suite area is measured as the area bounded by the centre line of demising or partition walls separating one unit from another unit, the exterior face of all exterior walls, and the exterior face of the corridor wall enclosing the adjoining unit. 6. Calculation of balcony area is measured as the area bounded by the centre line of demising or partition walls separating one unit from another unit, the outmost face of the enclosing guard and the external face of the unit adjoining the balcony. 7. The units are measured at typical floor in the building. Columns may vary in size depending on the floor level.



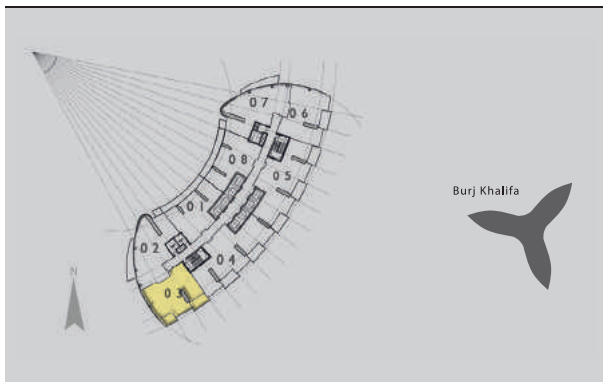
3 Bedroom

Unit 03

Level

26, 28, 30, 32, 34, 36, 38, 40, 42,  
44, 46, 48, 50, 52, 54, 56, 58, 60, 62

Tower 1



SUITE AREA:	146.85 SQ.M (1580.69 SQ.FT)
BALCONY AREA:	18.56 SQ.M (199.78 SQ.FT)
<b>TOTAL AREA:</b>	<b>165.43 SQ.M (1780.69 SQ.FT)</b>

Disclaimer: 1. All room dimensions are measured to structural elements and exclude wall finishes and construction tolerances. 2. All dimensions have been provided by our consultant architects. 3. All materials, dimensions & drawings are approximate. Information is subject to change without notice. 4. Actual suite area may vary from the stated area. Drawings not to scale. The developer reserves the right to make revisions. 5. Calculation of suite area is measured as the area bounded by the centre line of demising or partition walls separating one unit from another unit, the exterior face of all exterior walls, and the exterior face of the corridor wall enclosing the adjoining unit. 6. Calculation of balcony area is measured as the area bounded by the centre line of demising or partition walls separating one unit from another unit, the outmost face of the enclosing guard and the external face of the unit adjoining the balcony. 7. The units are measured at typical floor in the building. Columns may vary in size depending on the floor level.



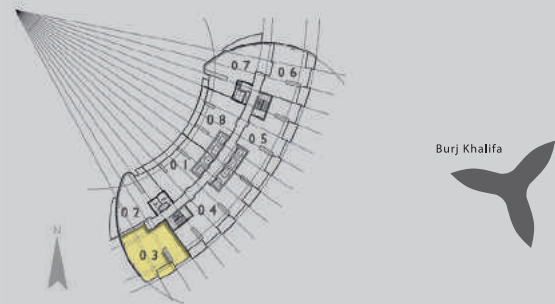
3 Bedroom

Unit 03

Level

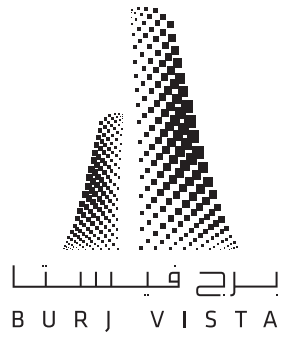
27, 29, 31, 33, 35, 37, 39, 41, 43,  
45, 47, 49, 51, 53, 55, 57, 59, 61, 63

Tower 1



SUITE AREA:	152.24 SQ.M (1638.71 SQ.FT)
BALCONY AREA:	10.31 SQ.M (110.98 SQ.FT)
<b>TOTAL AREA:</b>	<b>162.55 SQ.M (1749.69 SQ.FT)</b>

Disclaimer: 1. All room dimensions are measured to structural elements and exclude wall finishes and construction tolerances. 2. All dimensions have been provided by our consultant architects. 3. All materials, dimensions & drawings are approximate. Information is subject to change without notice. 4. Actual suite area may vary from the stated area. Drawings not to scale. The developer reserves the right to make revisions. 5. Calculation of suite area is measured as the area bounded by the centre line of demising or partition walls separating one unit from another unit, the exterior face of all exterior walls, and the exterior face of the corridor wall enclosing the adjoining unit. 6. Calculation of balcony area is measured as the area bounded by the centre line of demising or partition walls separating one unit from another unit, the outmost face of the enclosing guard and the external face of the unit adjoining the balcony. 7. The units are measured at typical floor in the building. Columns may vary in size depending on the floor level.



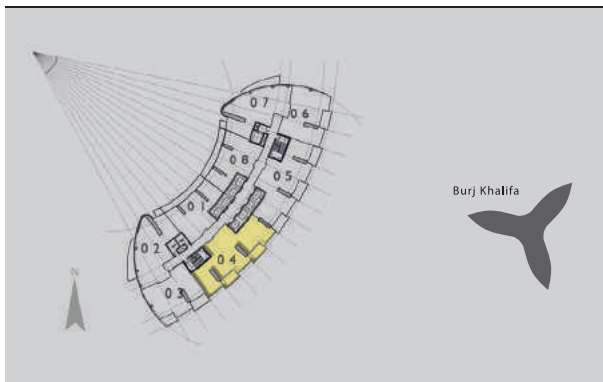
3 Bedroom

Unit 04

Level

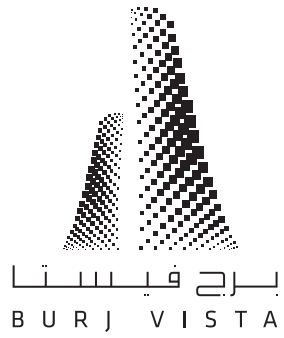
26, 28, 30, 32, 34, 36, 38, 40, 42, 44, 46, 48, 50, 52, 54, 56, 58, 60, 62

Tower 1



SUITE AREA:	177.03 SQ.M (1905.55 SQ.FT)
BALCONY AREA:	20.61 SQ.M (221.85 SQ.FT)
<hr/>	
TOTAL AREA:	197.64 SQ.M (2127.40 SQ.FT)

Disclaimer: 1. All room dimensions are measured to structural elements and exclude wall finishes and construction tolerances. 2. All dimensions have been provided by our consultant architects. 3. All materials, dimensions & drawings are approximate. Information is subject to change without notice. 4. Actual suite area may vary from the stated area. Drawings not to scale. The developer reserves the right to make revisions. 5. Calculation of suite area is measured as the area bounded by the centre line of demising or partition walls separating one unit from another unit, the exterior face of all exterior walls, and the exterior face of the corridor wall enclosing the adjoining unit. 6. Calculation of balcony area is measured as the area bounded by the centre line of demising or partition walls separating one unit from another unit, the outmost face of the enclosing guard and the external face of the unit adjoining the balcony. 7. The units are measured at typical floor in the building. Columns may vary in size depending on the floor level.



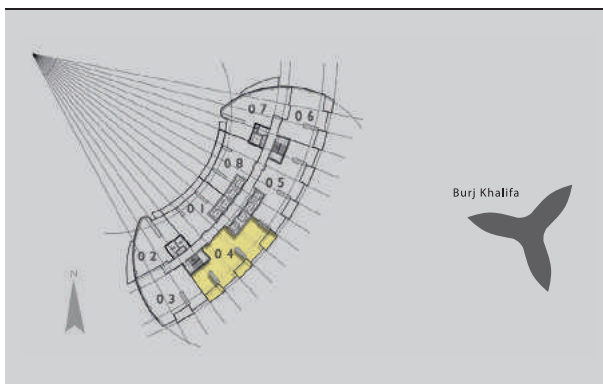
3 Bedroom

Unit 04

Level

27, 29, 31, 33, 35, 37, 39, 41, 43,  
45, 47, 49, 51, 53, 55, 57, 59, 61, 63

Tower 1



SUITE AREA:	170.36 SQ.M (1833.76 SQ.FT)
BALCONY AREA:	31.03 SQ.M (334.01 SQ.FT)
<b>TOTAL AREA:</b>	<b>201.39 SQ.M (2167.76 SQ.FT)</b>

Disclaimer: 1. All room dimensions are measured to structural elements and exclude wall finishes and construction tolerances. 2. All dimensions have been provided by our consultant architects. 3. All materials, dimensions & drawings are approximate. Information is subject to change without notice. 4. Actual suite area may vary from the stated area. Drawings not to scale. The developer reserves the right to make revisions. 5. Calculation of suite area is measured as the area bounded by the centre line of demising or partition walls separating one unit from another unit, the exterior face of all exterior walls, and the exterior face of the corridor wall enclosing the adjoining unit. 6. Calculation of balcony area is measured as the area bounded by the centre line of demising or partition walls separating one unit from another unit, the outmost face of the enclosing guard and the external face of the unit adjoining the balcony. 7. The units are measured at typical floor in the building. Columns may vary in size depending on the floor level.



3 Bedroom

Unit 05

Level

26, 28, 30, 32, 34, 36, 38, 40, 42,  
44, 46, 48, 50, 52, 54, 56, 58, 60, 62

Tower 1



SUITE AREA:  
BALCONY AREA:

170.36 SQ.M (1833.76 SQ.FT)  
31.03 SQ.M (334.01 SQ.FT)

TOTAL AREA:

201.39 SQ.M (2167.76 SQ.FT)

Disclaimer: 1. All room dimensions are measured to structural elements and exclude wall finishes and construction tolerances. 2. All dimensions have been provided by our consultant architects. 3. All materials, dimensions & drawings are approximate. Information is subject to change without notice. 4. Actual suite area may vary from the stated area. Drawings not to scale. The developer reserves the right to make revisions. 5. Calculation of suite area is measured as the area bounded by the centre line of demising or partition walls separating one unit from another unit, the exterior face of all exterior walls, and the exterior face of the corridor wall enclosing the adjoining unit. 6. Calculation of balcony area is measured as the area bounded by the centre line of demising or partition walls separating one unit from another unit, the outmost face of the enclosing guard and the external face of the unit adjoining the balcony. 7. The units are measured at typical floor in the building. Columns may vary in size depending on the floor level.



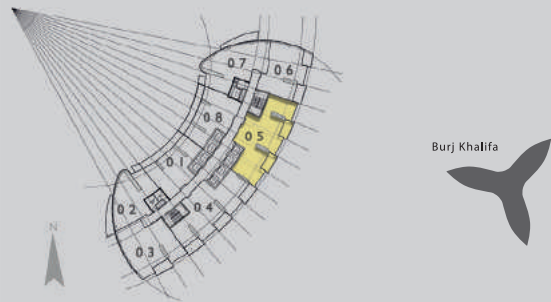
3 Bedroom

Unit 05

Level

27, 29, 31, 33, 35, 37, 39, 41, 43,  
45, 47, 49, 51, 53, 55, 57, 59, 61, 63

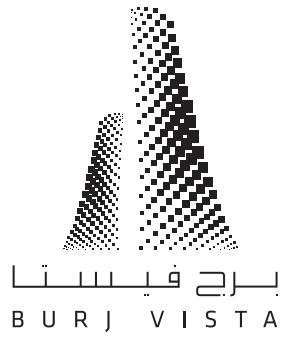
Tower 1



SUITE AREA:	177.03 SQ.M (1905.55 SQ.FT)
BALCONY AREA:	20.61 SQ.M (221.85 SQ.FT)
<b>TOTAL AREA:</b>	<b>197.64 SQ.M (2127.40 SQ.FT)</b>

Disclaimer: 1. All room dimensions are measured to structural elements and exclude wall finishes and construction tolerances. 2. All dimensions have been provided by our consultant architects. 3. All materials, dimensions & drawings are approximate. Information is subject to change without notice. 4. Actual suite area may vary from the stated area. Drawings not to scale. The developer reserves the right to make revisions. 5. Calculation of suite area is measured as the area bounded by the centre line of demising or partition walls separating one unit from another unit, the exterior face of all exterior walls, and the exterior face of the corridor wall enclosing the adjoining unit. 6. Calculation of balcony area is measured as the area bounded by the centre line of demising or partition walls separating one unit from another unit, the outmost face of the enclosing guard and the external face of the unit adjoining the balcony. 7. The units are measured at typical floor in the building. Columns may vary in size depending on the floor level.





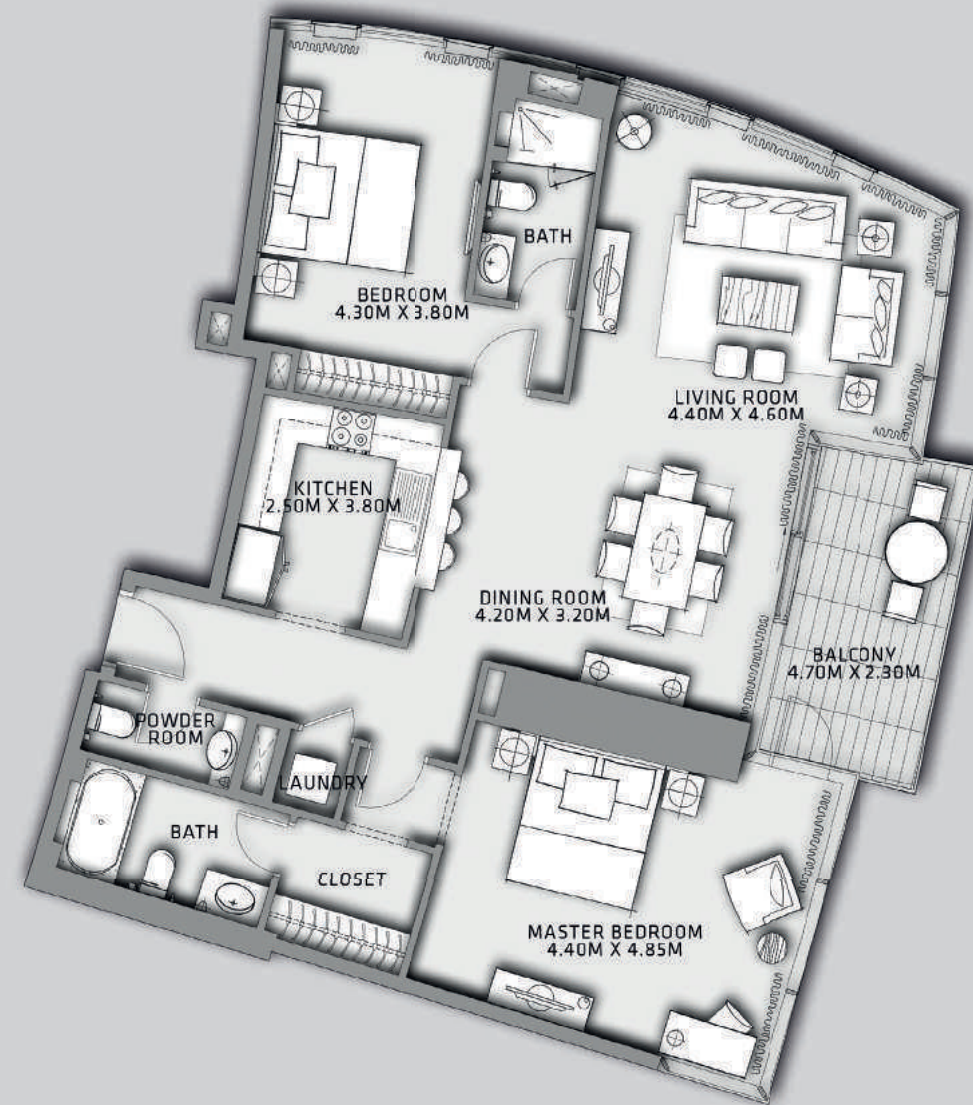
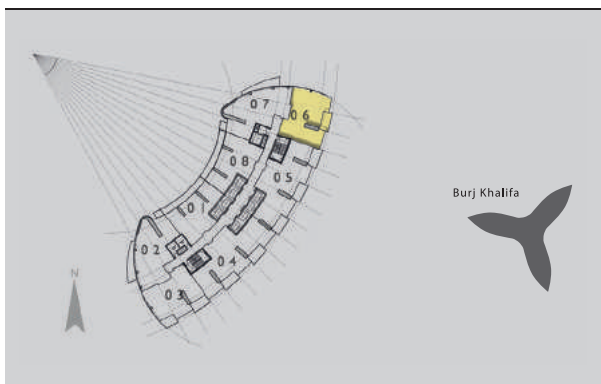
2 Bedroom

Unit 06

Level

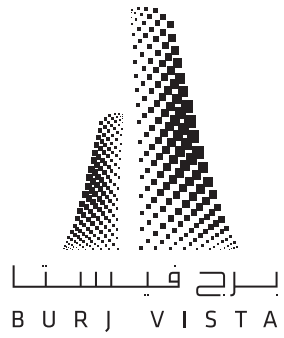
26, 28, 30, 32, 34, 36, 38, 40, 42, 44, 46

Tower 1



SUITE AREA:	123.24 SQ.M (1326.56 SQ.FT)
BALCONY AREA:	10.23 SQ.M (110.12 SQ.FT)
<b>TOTAL AREA:</b>	<b>133.47 SQ.M (1436.67 SQ.FT)</b>

Disclaimer: 1. All room dimensions are measured to structural elements and exclude wall finishes and construction tolerances. 2. All dimensions have been provided by our consultant architects. 3. All materials, dimensions & drawings are approximate. Information is subject to change without notice. 4. Actual suite area may vary from the stated area. Drawings not to scale. The developer reserves the right to make revisions. 5. Calculation of suite area is measured as the area bounded by the centre line of demising or partition walls separating one unit from another unit, the exterior face of all exterior walls, and the exterior face of the corridor wall enclosing the adjoining unit. 6. Calculation of balcony area is measured as the area bounded by the centre line of demising or partition walls separating one unit from another unit, the outmost face of the enclosing guard and the external face of the unit adjoining the balcony. 7. The units are measured at typical floor in the building. Columns may vary in size depending on the floor level.



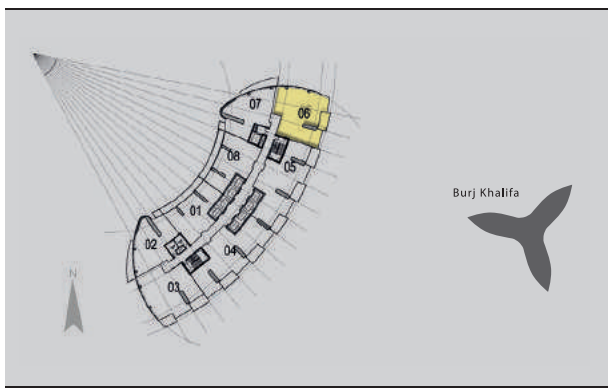
3 Bedroom

Unit 06

Level

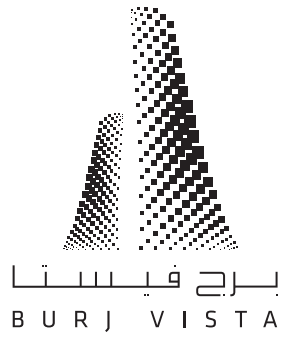
48, 50, 52, 54, 56, 58, 60, 62

Tower 1



SUITE AREA:	152.24 SQ.M (1638.71 SQ.FT)
BALCONY AREA:	10.31 SQ.M (110.98 SQ.FT)
<b>TOTAL AREA:</b>	<b>162.55 SQ.M (1749.69 SQ.FT)</b>

Disclaimer: 1. All room dimensions are measured to structural elements and exclude wall finishes and construction tolerances. 2. All dimensions have been provided by our consultant architects. 3. All materials, dimensions & drawings are approximate. Information is subject to change without notice. 4. Actual suite area may vary from the stated area. Drawings not to scale. The developer reserves the right to make revisions. 5. Calculation of suite area is measured as the area bounded by the centre line of demising or partition walls separating one unit from another unit, the exterior face of all exterior walls, and the exterior face of the corridor wall enclosing the adjoining unit. 6. Calculation of balcony area is measured as the area bounded by the centre line of demising or partition walls separating one unit from another unit, the outmost face of the enclosing guard and the external face of the unit adjoining the balcony. 7. The units are measured at typical floor in the building. Columns may vary in size depending on the floor level.



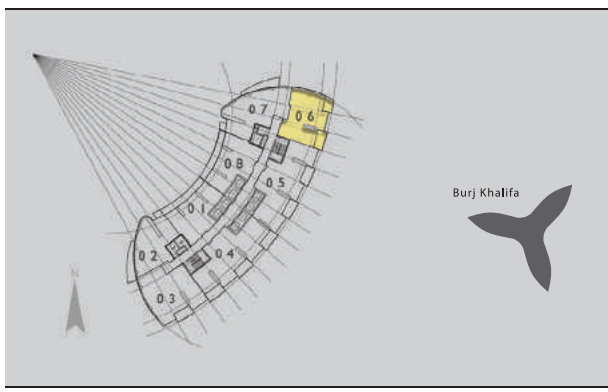
2 Bedroom

Unit 06

Level

27, 29, 31, 33, 35, 37, 39, 41, 43, 45

Tower 1



SUITE AREA:	117.40 SQ.M (1263.69 SQ.FT)
BALCONY AREA:	18.56 SQ.M (199.78 SQ.FT)
<b>TOTAL AREA:</b>	<b>135.96 SQ.M (1463.47 SQ.FT)</b>

Disclaimer: 1. All room dimensions are measured to structural elements and exclude wall finishes and construction tolerances. 2. All dimensions have been provided by our consultant architects. 3. All materials, dimensions & drawings are approximate. Information is subject to change without notice. 4. Actual suite area may vary from the stated area. Drawings not to scale. The developer reserves the right to make revisions. 5. Calculation of suite area is measured as the area bounded by the centre line of demising or partition walls separating one unit from another unit, the exterior face of all exterior walls, and the exterior face of the corridor wall enclosing the adjoining unit. 6. Calculation of balcony area is measured as the area bounded by the centre line of demising or partition walls separating one unit from another unit, the outmost face of the enclosing guard and the external face of the unit adjoining the balcony. 7. The units are measured at typical floor in the building. Columns may vary in size depending on the floor level.



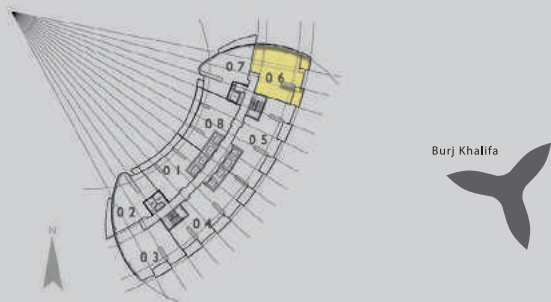
3 Bedroom

Unit 06

Level

47, 49, 51, 53, 55, 57, 59, 61, 63

Tower 1

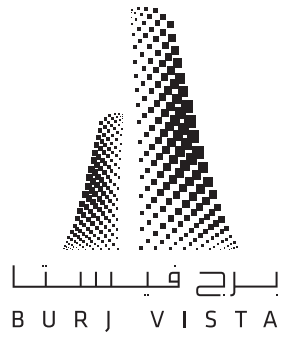


Burj Khalifa



SUITE AREA:	146.85 SQ.M (1580.69 SQ.FT)
BALCONY AREA:	18.56 SQ.M (199.78 SQ.FT)
<b>TOTAL AREA:</b>	<b>165.43 SQ.M (1780.69 SQ.FT)</b>

Disclaimer: 1. All room dimensions are measured to structural elements and exclude wall finishes and construction tolerances. 2. All dimensions have been provided by our consultant architects. 3. All materials, dimensions & drawings are approximate. Information is subject to change without notice. 4. Actual suite area may vary from the stated area. Drawings not to scale. The developer reserves the right to make revisions. 5. Calculation of suite area is measured as the area bounded by the centre line of demising or partition walls separating one unit from another unit, the exterior face of all exterior walls, and the exterior face of the corridor wall enclosing the adjoining unit. 6. Calculation of balcony area is measured as the area bounded by the centre line of demising or partition walls separating one unit from another unit, the outmost face of the enclosing guard and the external face of the unit adjoining the balcony. 7. The units are measured at typical floor in the building. Columns may vary in size depending on the floor level.

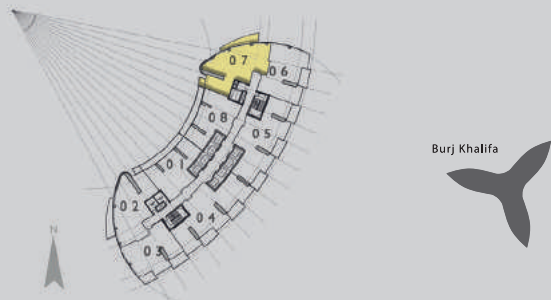
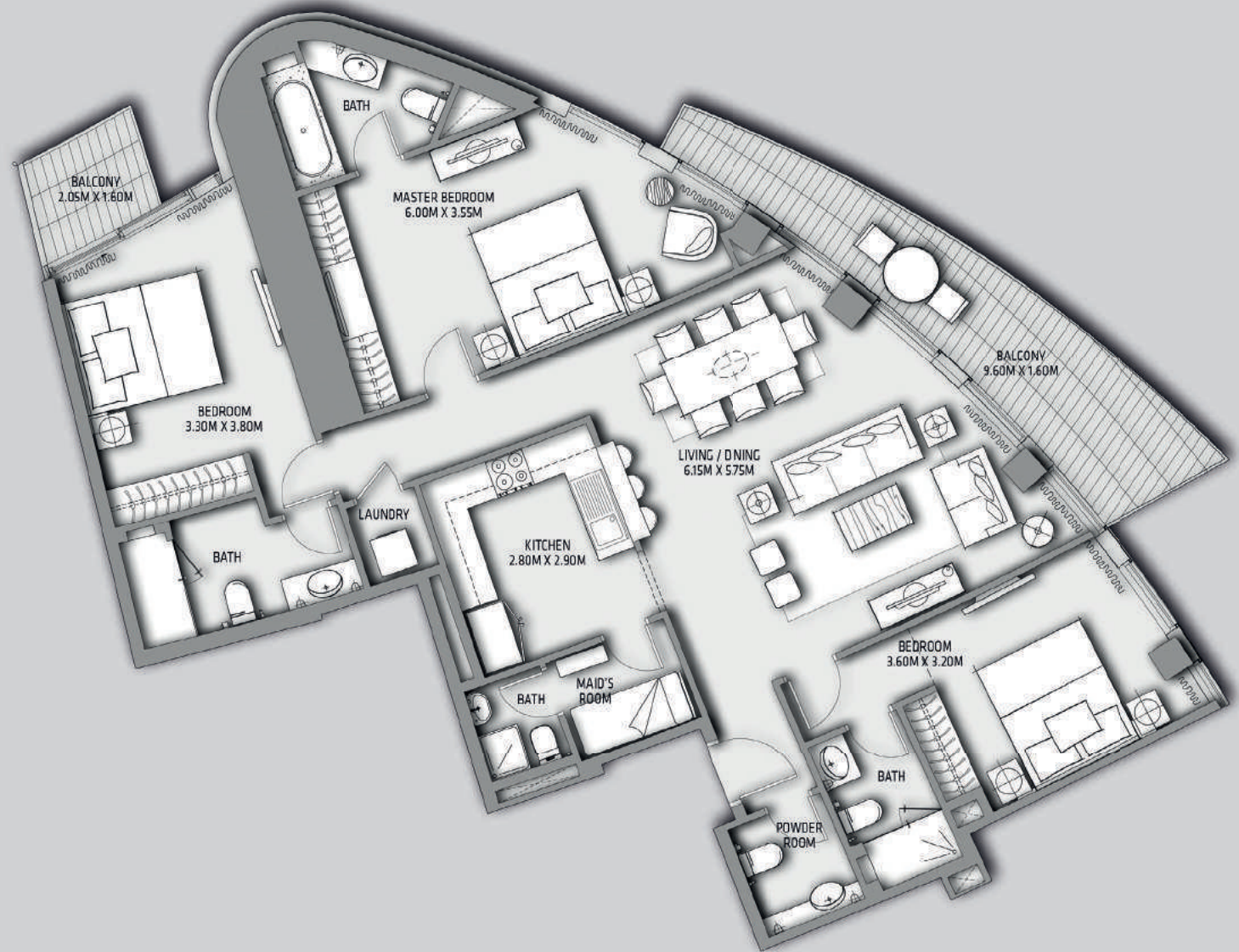


3 Bedroom

Unit 07

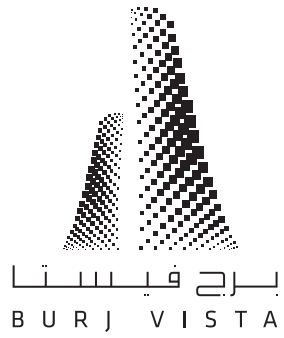
Level 26 - 44

Tower 1



SUITE AREA:	142.42 SQ.M (1533.01 SQ.FT)
BALCONY AREA:	17.95 SQ.M (193.21 SQ.FT)
<b>TOTAL AREA:</b>	<b>160.37 SQ.M (1726.22 SQ.FT)</b>

Disclaimer: 1. All room dimensions are measured to structural elements and exclude wall finishes and construction tolerances. 2. All dimensions have been provided by our consultant architects. 3. All materials, dimensions & drawings are approximate. Information is subject to change without notice. 4. Actual suite area may vary from the stated area. Drawings not to scale. The developer reserves the right to make revisions. 5. Calculation of suite area is measured as the area bounded by the centre line of demising or partition walls separating one unit from another unit, the exterior face of all exterior walls, and the exterior face of the corridor wall enclosing the adjoining unit. 6. Calculation of balcony area is measured as the area bounded by the centre line of demising or partition walls separating one unit from another unit, the outmost face of the enclosing guard and the external face of the unit adjoining the balcony. 7. The units are measured at typical floor in the building. Columns may vary in size depending on the floor level.

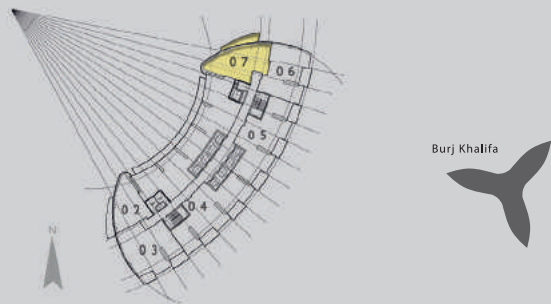


2 Bedroom

Unit 07

Level 45, 46

Tower 1



SUITE AREA:	113.58 SQ.M (1222.58 SQ.FT)
BALCONY AREA:	14.69 SQ.M (158.12 SQ.FT)
<b>TOTAL AREA:</b>	<b>128.27 SQ.M (1380.70 SQ.FT)</b>

Disclaimer: 1. All room dimensions are measured to structural elements and exclude wall finishes and construction tolerances. 2. All dimensions have been provided by our consultant architects. 3. All materials, dimensions & drawings are approximate. Information is subject to change without notice. 4. Actual suite area may vary from the stated area. Drawings not to scale. The developer reserves the right to make revisions. 5. Calculation of suite area is measured as the area bounded by the centre line of demising or partition walls separating one unit from another unit, the exterior face of all exterior walls, and the exterior face of the corridor wall enclosing the adjoining unit. 6. Calculation of balcony area is measured as the area bounded by the centre line of demising or partition walls separating one unit from another unit, the outmost face of the enclosing guard and the external face of the unit adjoining the balcony. 7. The units are measured at typical floor in the building. Columns may vary in size depending on the floor level.

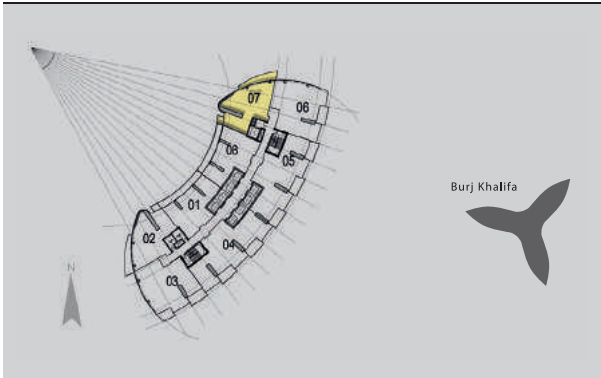
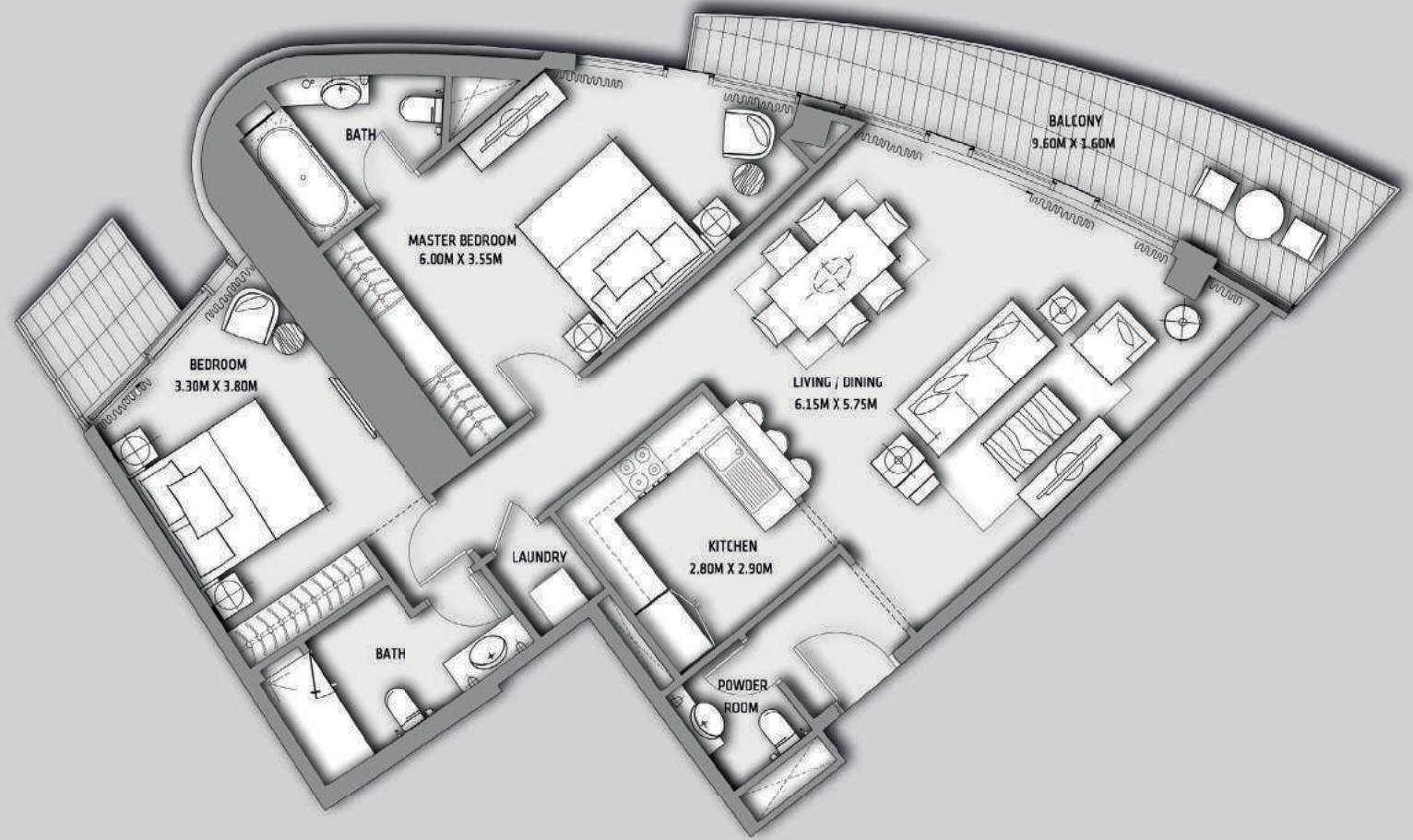


2 Bedroom

Unit 07

Level 47 - 60

Tower 1



SUITE AREA:	112.14 SQ.M (1207.07 SQ.FT)
BALCONY AREA:	17.95 SQ.M (193.21 SQ.FT)
<b>TOTAL AREA:</b>	<b>130.09 SQ.M (1400.29 SQ.FT)</b>

Disclaimer: 1. All room dimensions are measured to structural elements and exclude wall finishes and construction tolerances. 2. All dimensions have been provided by our consultant architects. 3. All materials, dimensions & drawings are approximate. Information is subject to change without notice. 4. Actual suite area may vary from the stated area. Drawings not to scale. The developer reserves the right to make revisions. 5. Calculation of suite area is measured as the area bounded by the centre line of demising or partition walls separating one unit from another unit, the exterior face of all exterior walls, and the exterior face of the corridor wall enclosing the adjoining unit. 6. Calculation of balcony area is measured as the area bounded by the centre line of demising or partition walls separating one unit from another unit, the outmost face of the enclosing guard and the external face of the unit adjoining the balcony. 7. The units are measured at typical floor in the building. Columns may vary in size depending on the floor level.

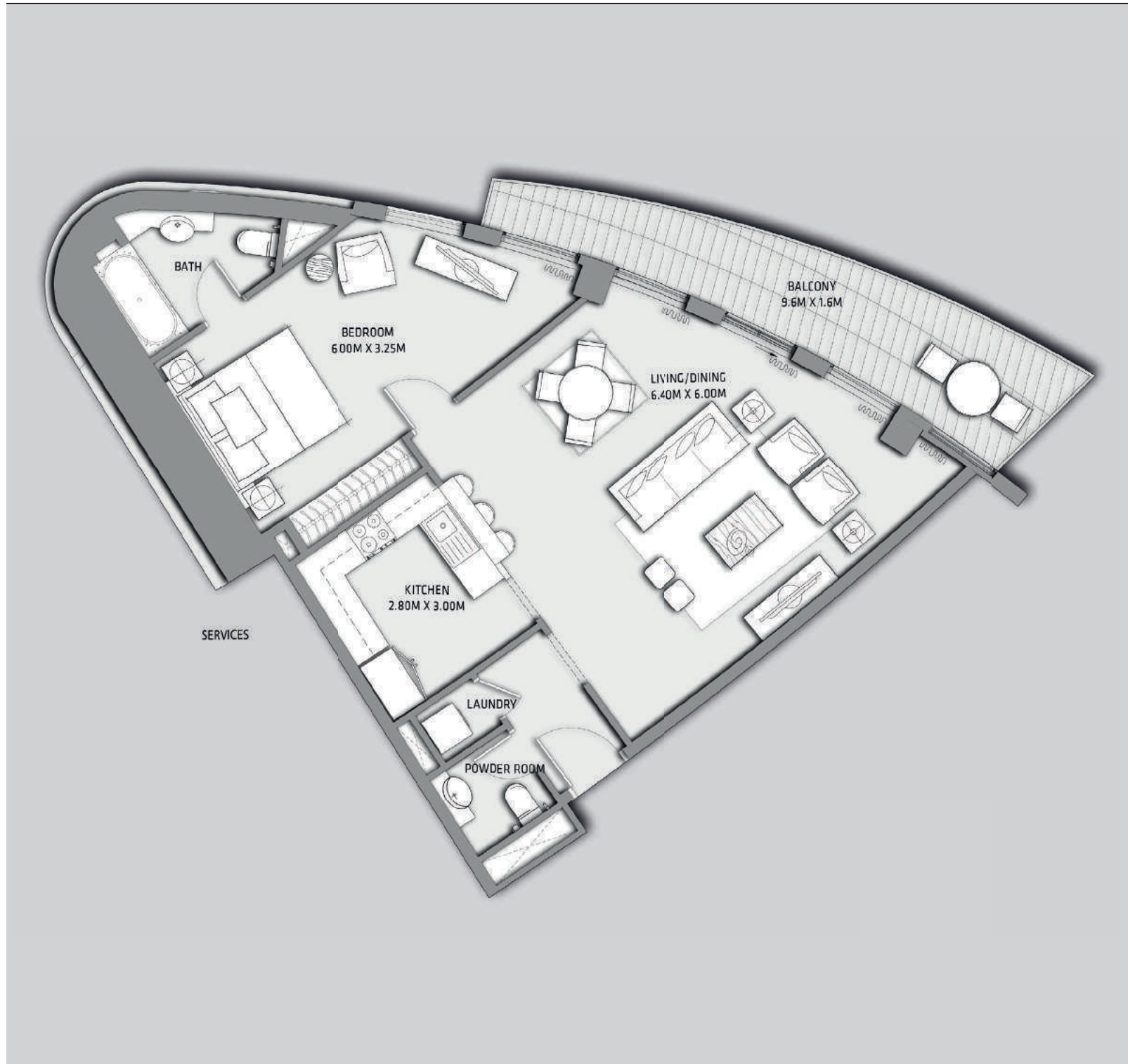
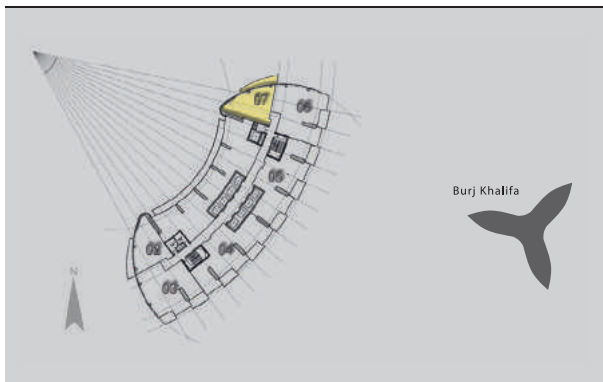


1 Bedroom

Unit 07

Level 61, 62, 63

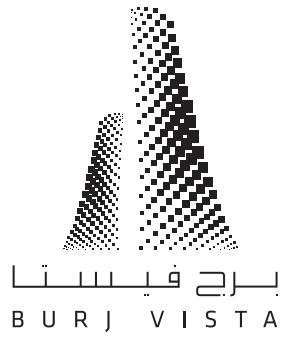
Tower 1



SUITE AREA:	84.85 SQ.M (913.33 SQ.FT)
BALCONY AREA:	14.70 SQ.M (158.23 SQ.FT)
<b>TOTAL AREA:</b>	<b>99.55 SQ.M (1071.56 SQ.FT)</b>

Disclaimer: 1. All room dimensions are measured to structural elements and exclude wall finishes and construction tolerances. 2. All dimensions have been provided by our consultant architects. 3. All materials, dimensions & drawings are approximate. Information is subject to change without notice. 4. Actual suite area may vary from the stated area. Drawings not to scale. The developer reserves the right to make revisions. 5. Calculation of suite area is measured as the area bounded by the centre line of demising or partition walls separating one unit from another unit, the exterior face of all exterior walls, and the exterior face of the corridor wall enclosing the adjoining unit. 6. Calculation of balcony area is measured as the area bounded by the centre line of demising or partition walls separating one unit from another unit, the outmost face of the enclosing guard and the external face of the unit adjoining the balcony. 7. The units are measured at typical floor in the building. Columns may vary in size depending on the floor level.



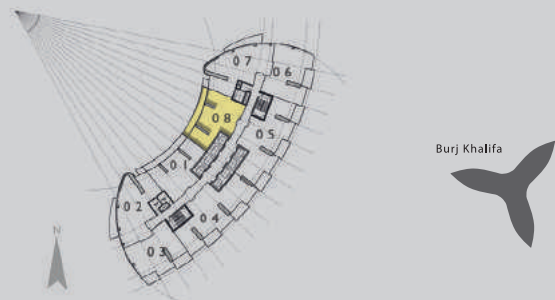


2 Bedroom

Unit 08

Level  
26 - 44, 47 - 60

Tower 1



Burj Khalifa



SUITE AREA:	109.23 SQ.M (1175.75 SQ.FT)
BALCONY AREA:	20.72 SQ.M (223.03 SQ.FT)
<b>TOTAL AREA:</b>	<b>129.95 SQ.M (1398.78 SQ.FT)</b>

Disclaimer: 1. All room dimensions are measured to structural elements and exclude wall finishes and construction tolerances. 2. All dimensions have been provided by our consultant architects. 3. All materials, dimensions & drawings are approximate. Information is subject to change without notice. 4. Actual suite area may vary from the stated area. Drawings not to scale. The developer reserves the right to make revisions. 5. Calculation of suite area is measured as the area bounded by the centre line of demising or partition walls separating one unit from another unit, the exterior face of all exterior walls, and the exterior face of the corridor wall enclosing the adjoining unit. 6. Calculation of balcony area is measured as the area bounded by the centre line of demising or partition walls separating one unit from another unit, the outmost face of the enclosing guard and the external face of the unit adjoining the balcony. 7. The units are measured at typical floor in the building. Columns may vary in size depending on the floor level.



## **Contact Us**

**Toll Free : 800 37373**

**Hotline : +971 52 754 3246**

**Email : sales@drehomes.com**

**Visit Us For More Info:-**

**<https://drehomes.com/property/emaar-burj-vista-apartments/>**