



www.deyaar.com • 800-DEYAAR

أفنان ديستركت
AFNAN DISTRICT

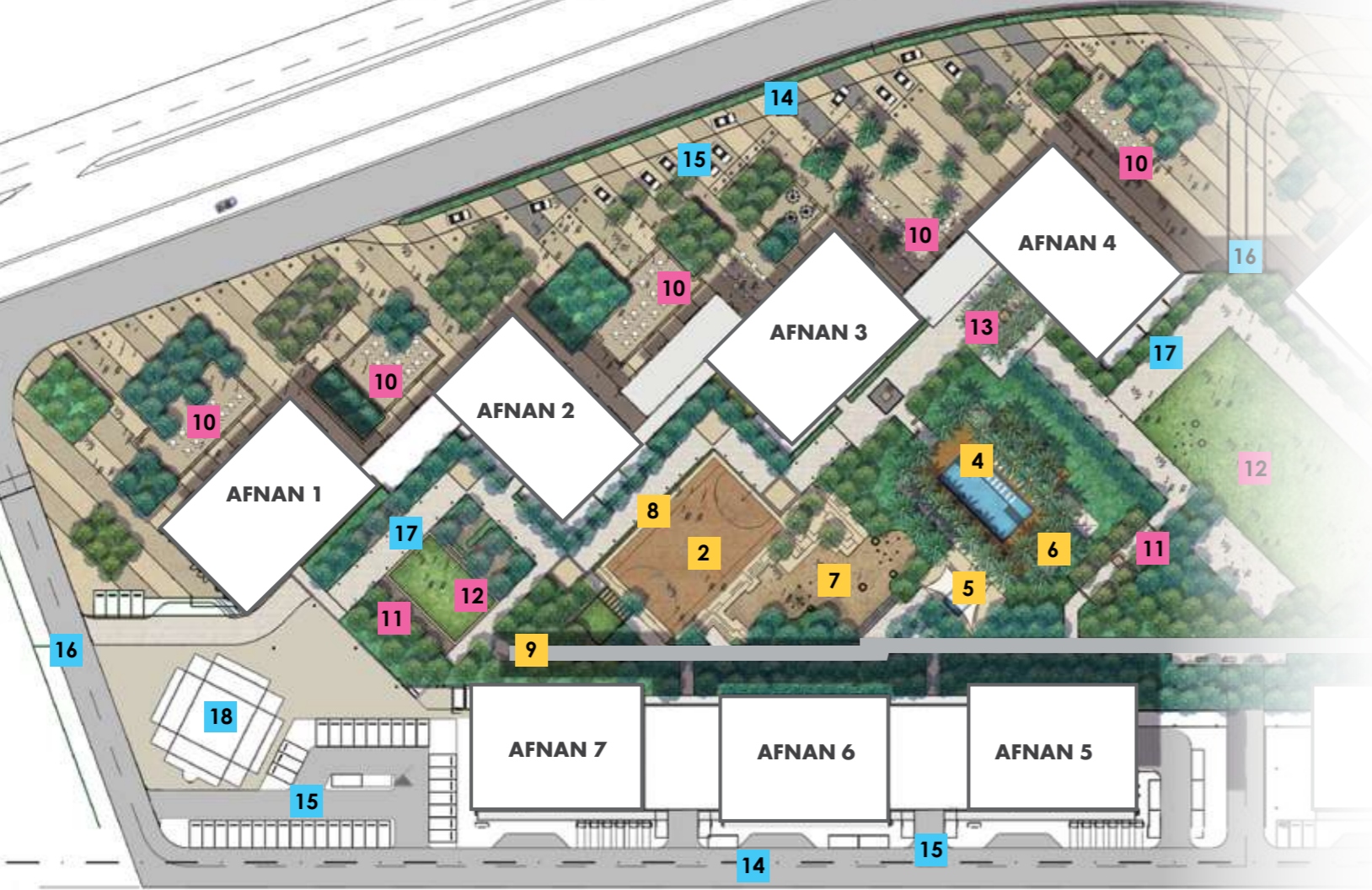
M
MIDTOWN
BY DEYAAR

أفنان ديستركت AFNAN DISTRICT

IMPZ



SH. MOHAMMED BIN ZAYED
ROAD



JUMEIRAH GOLF ESTATES

- | | | | | | |
|---|---|----|--|----|---|
| 2 | ملعب كرة سلة
BASKETBALL COURT | 10 | محلات تجزئة ومطاعم
RETAIL - F&B OUTLETS | 14 | منطقة نزول وصعود الركاب
DROP-OFF AREA |
| 4 | بركة سباحة عائلية
FAMILY SWIMMING POOL | 11 | مناطق جلوس
SEATING AREAS | 15 | مواقف الزوار
VISITORS PARKING |
| 5 | بركة سباحة للأطفال
CHILDREN'S POOL | 12 | مسطحات خضراء / منطقة فعاليات
OPEN LAWN / EVENTS SPACE | 16 | مدخل مواقف السكان
RESIDENTS PARKING ENTRANCE |
| 6 | غرف التبدل
CHANGING FACILITIES | 13 | منطقة السكان
RESIDENCES SQUARE | 17 | ممشى الحديقة المركزية
CENTRAL GARDEN WALK |
| 7 | منطقة لعب الأطفال
CHILDREN'S PLAY AREA | | | 18 | منطقة تطوير مستقبلية
FUTURE DEVELOPMENT |
| 8 | منصات لرياضة التسلق
CLIMBING WALLS | | | | |
| 9 | مضمار الجري
JOGGING TRACK | | | | |

مخطط الطابق FLOOR PLANS

إخلاء مسؤولية:

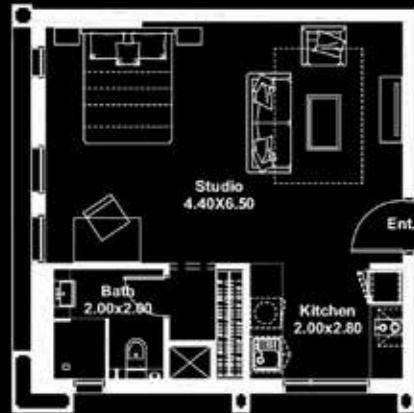
(1) جميع المعلومات والمواد والمخططات والمرافق الواردة هي تقريبية ووضعت لغايات العرض فقط. للمطور الحق في مراجعة المخططات والموصفات والمواد والقياسات والرسومات والمرافق المعروضة دون إشعار مسبق. (2) مساحات الوحدات والأبعاد الحقيقية والمخططات ومواقع ومواصفات الشرفات والأبواب والخزائن أو أية تجهيزات أخرى قد تختلف من طابق إلى آخر أو من وحدة إلى أخرى وهي خاضعة للتعديل من قبل المطور. (3) لن يتم توفير أي أثاث أو أجهزة كهربائية من قبل المطور.

Disclaimers:

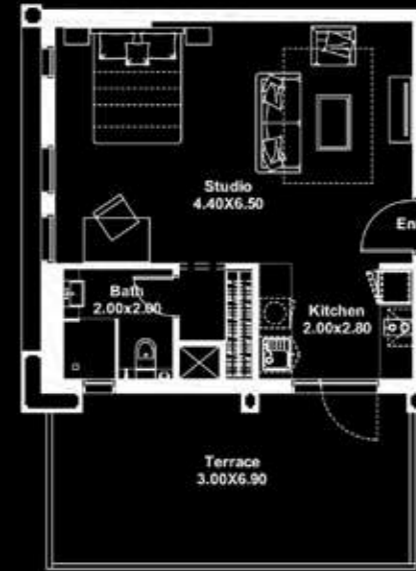
(1) All information, materials, plans and amenities are approximate and provided for illustrative purposes only. The developer reserves the right to make revisions to the floor plans and any features, materials, dimensions, drawings and amenities of the project without notice. (2) Units areas, actual dimensions, layout, location, specifications of balcony, door, wardrobe or other fixtures may vary from floor to floor and between units and are subject to revision by the developer. (3) Furniture and electric devices will not be provided by the developer.

AFNAN 1,2,3 & 4
STUDIO APARTMENT - TYPE A & H

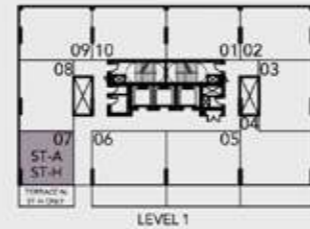
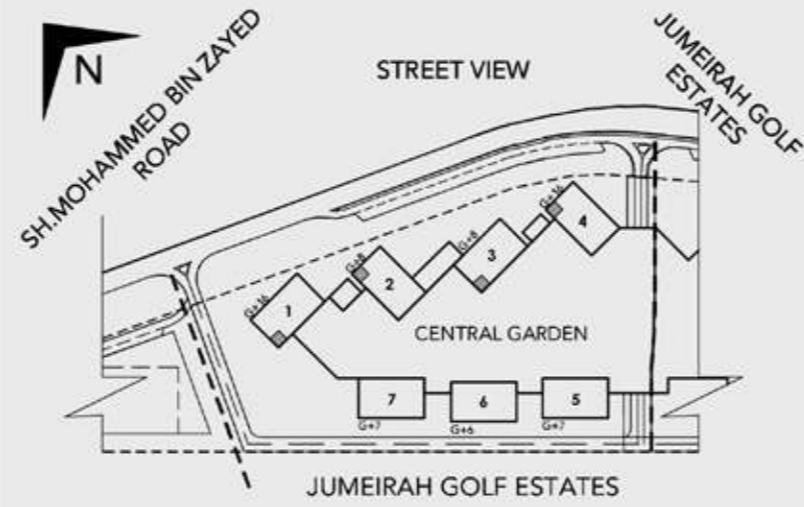
ST/A



ST/H

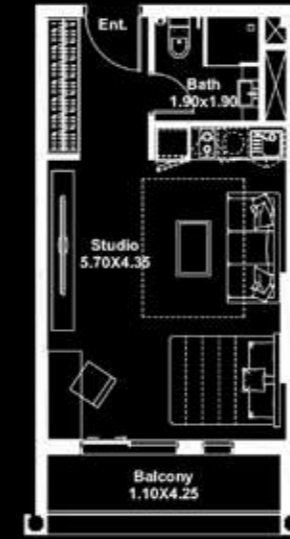


TYPE	UNIT NO.	LEVEL	UNIT (SQ.FT.)	BALCONY (SQ.FT.)	TOTAL (SQ.FT.)	TOTAL COUNT (NO.)
ST/A	07 (BLDG 1,2 & 4)	1	498	0	498	3
ST/H	07 (BLDG 3)	1	498	251	749	1

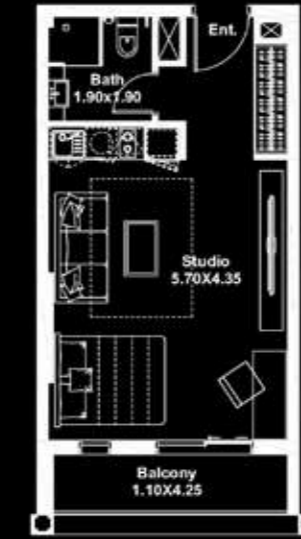


AFNAN 1 & 4
STUDIO APARTMENT - TYPE B & C

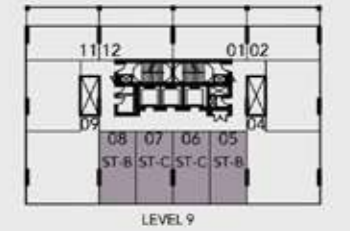
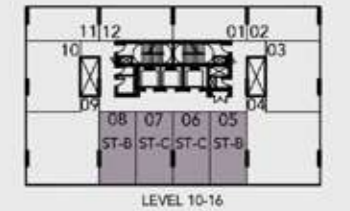
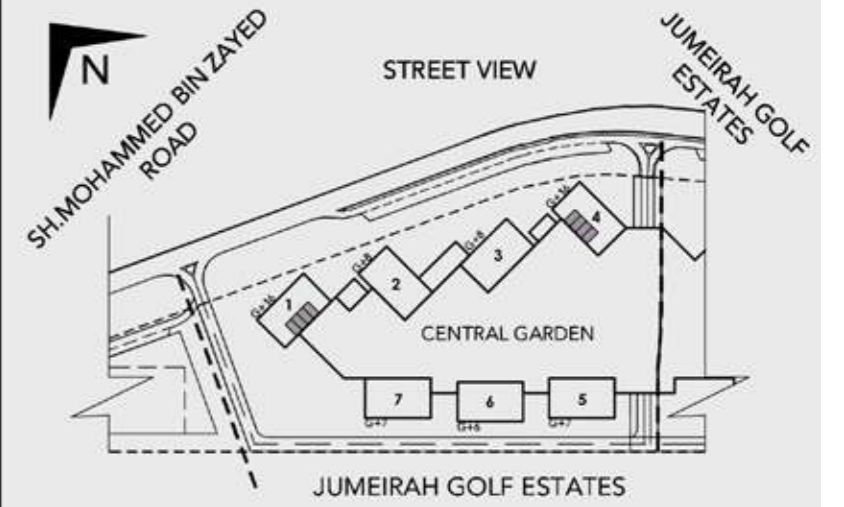
ST/B



ST/C



TYPE	UNIT NO.	LEVEL	UNIT (SQ.FT.)	BALCONY (SQ.FT.)	TOTAL (SQ.FT.)	TOTAL COUNT (NO.)
ST/B	05 & 08	9-16	382	54	436	32
ST/C	06 & 07	9-16	388	54	442	32

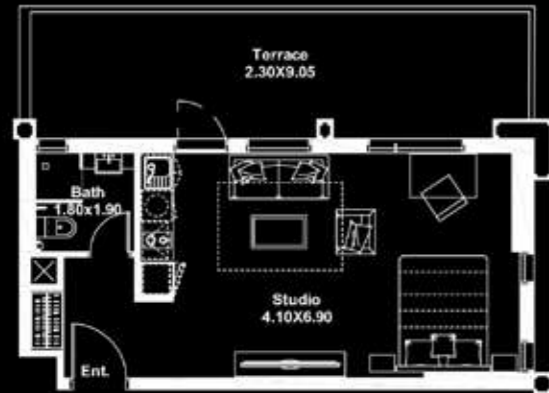


AFNAN 1 & 4
STUDIO APARTMENT - TYPE D & E

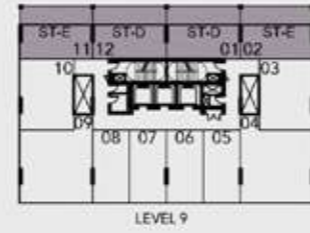
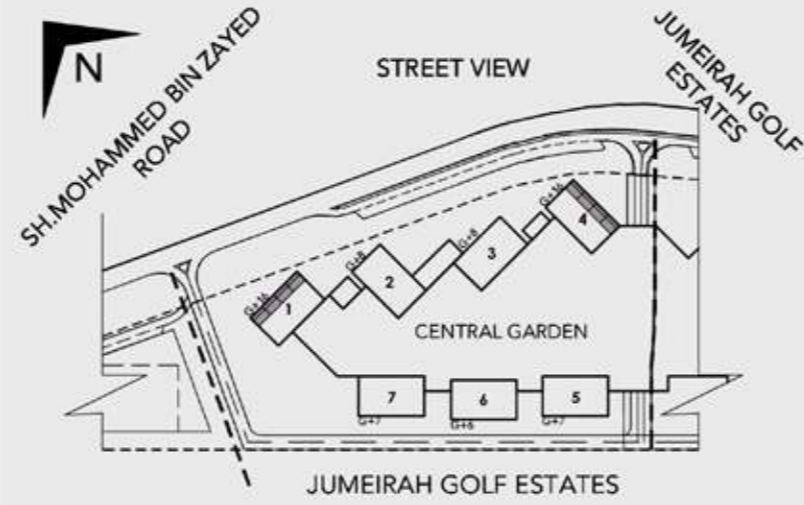
ST/D



ST/E

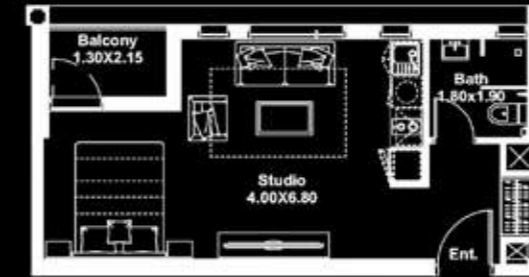


TYPE	UNIT NO.	LEVEL	UNIT (SQ.FT.)	BALCONY (SQ.FT.)	TOTAL (SQ.FT.)	TOTAL COUNT (NO.)
ST/D	01 & 12	9	426	235	661	4
ST/E	02 & 11	9	432	242	674	4



AFNAN 1 & 4
STUDIO APARTMENT - TYPE F & G

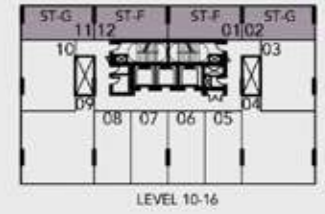
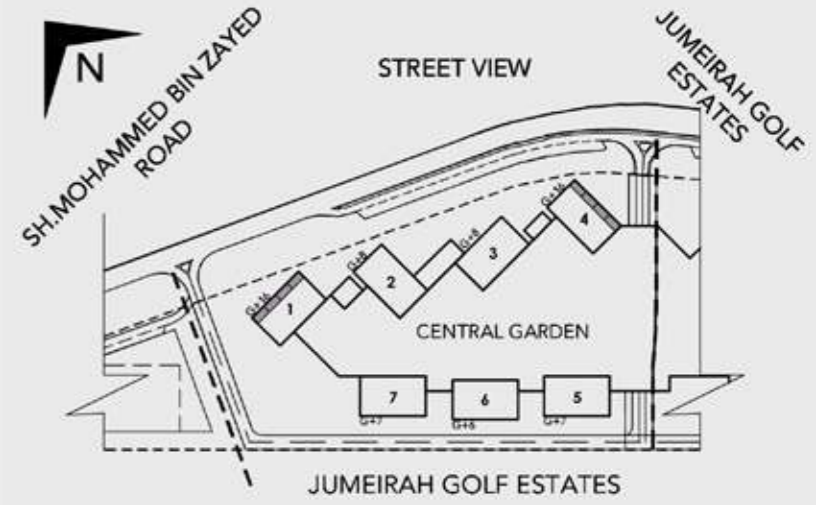
ST/F



ST/G



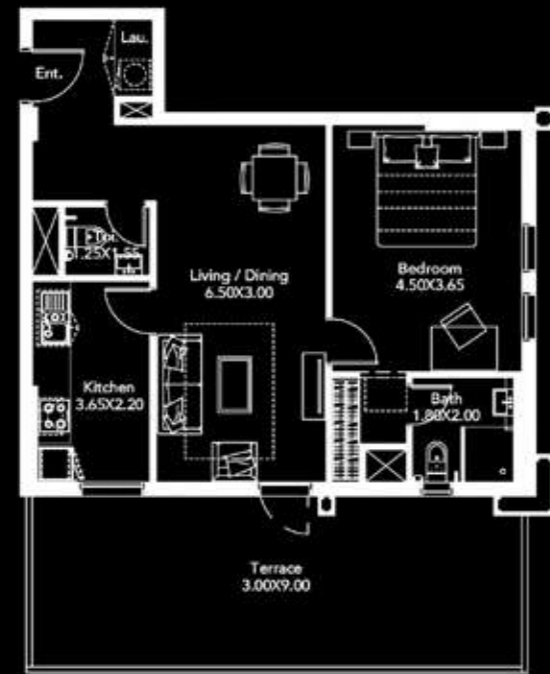
TYPE	UNIT NO.	LEVEL	UNIT (SQ.FT.)	BALCONY (SQ.FT.)	TOTAL (SQ.FT.)	TOTAL COUNT (NO.)
ST/F	01 & 12	10-16	393	33	425	28
ST/G	02 & 11	10-16	395	36	432	28



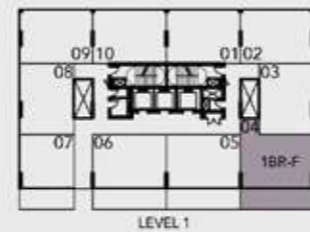
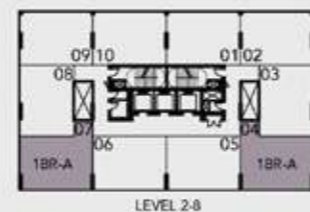
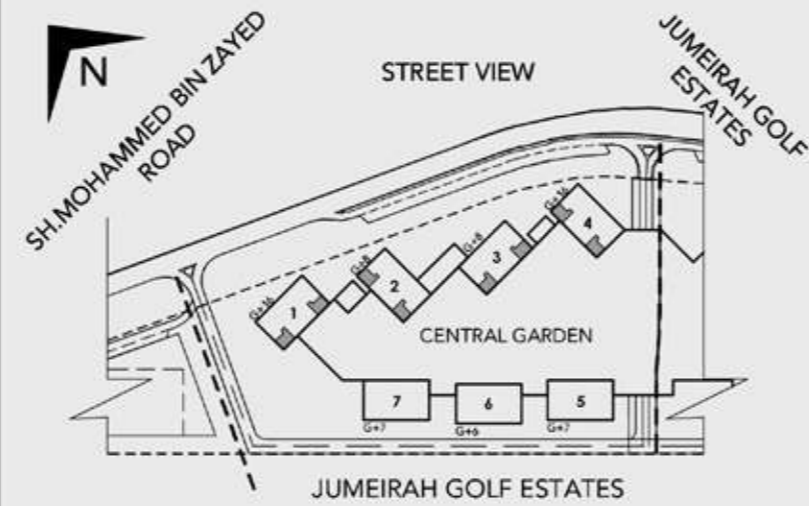
AFNAN 1,2,3 & 4
ONE BEDROOM APARTMENT - TYPE A & F

1BR/A

1BR/F



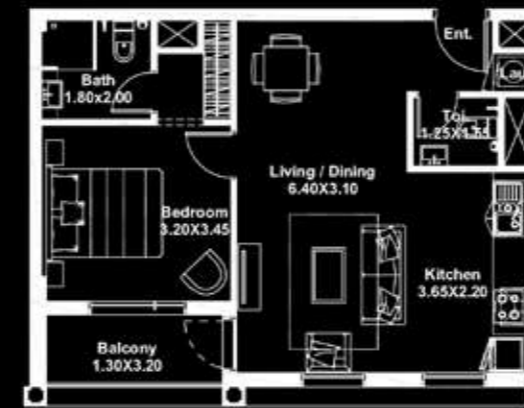
TYPE	UNIT NO.	LEVEL	UNIT (SQ.FT.)	BALCONY (SQ.FT.)	TOTAL (SQ.FT.)	TOTAL COUNT (NO.)
1BR/A	04 & 07	2-8	664	52	716	56
1BR/F	04	1	715	313	1,028	4



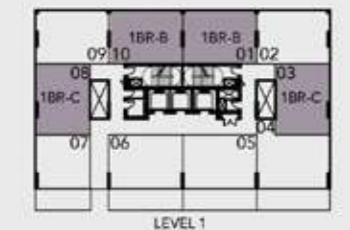
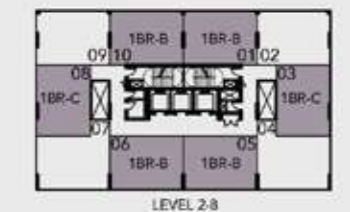
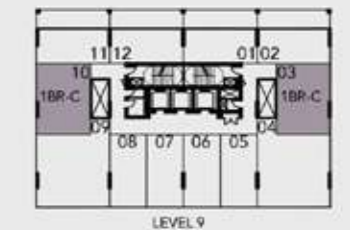
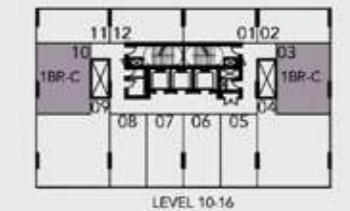
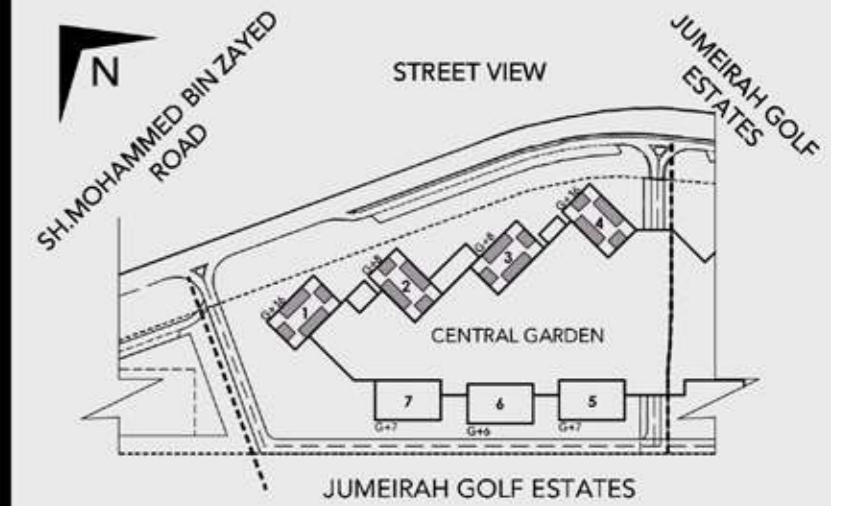
AFNAN 1,2,3 & 4
ONE BEDROOM APARTMENT - TYPE B & C

1BR/B

1BR/C

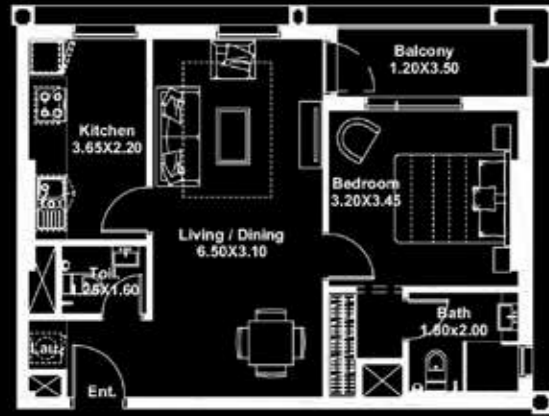


TYPE	UNIT NO.	LEVEL	UNIT (SQ.FT.)	BALCONY (SQ.FT.)	TOTAL (SQ.FT.)	TOTAL COUNT (NO.)
1BR/B	01 & 10	1-8	602	47	649	64
1BR/B	05 & 06	2-8	595	47	642	56
1BR/C	03 & 08/10	1-16	574	50	624	96

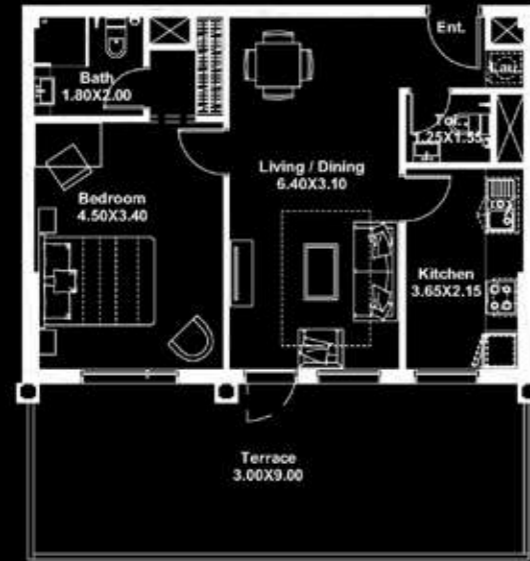


AFNAN 1,2,3 & 4
ONE BEDROOM APARTMENT - TYPE D & E

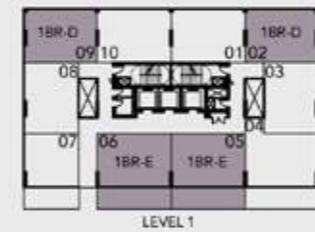
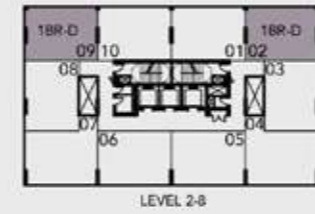
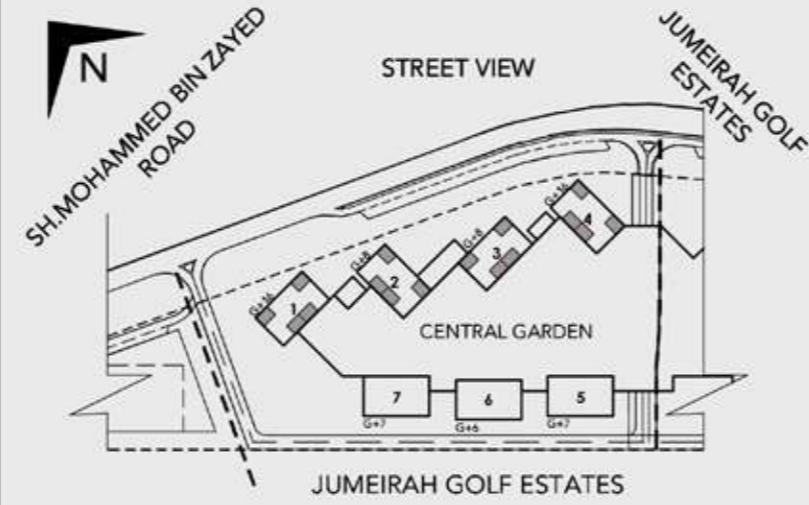
1BR/D



1BR/E



TYPE	UNIT NO.	LEVEL	UNIT (SQ.FT.)	BALCONY (SQ.FT.)	TOTAL (SQ.FT.)	TOTAL COUNT (NO.)
1BR/D	02 & 09	2-8	612	50	662	64
1BR/E	05 & 06	1	642	313	956	8

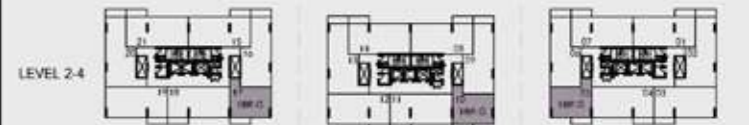
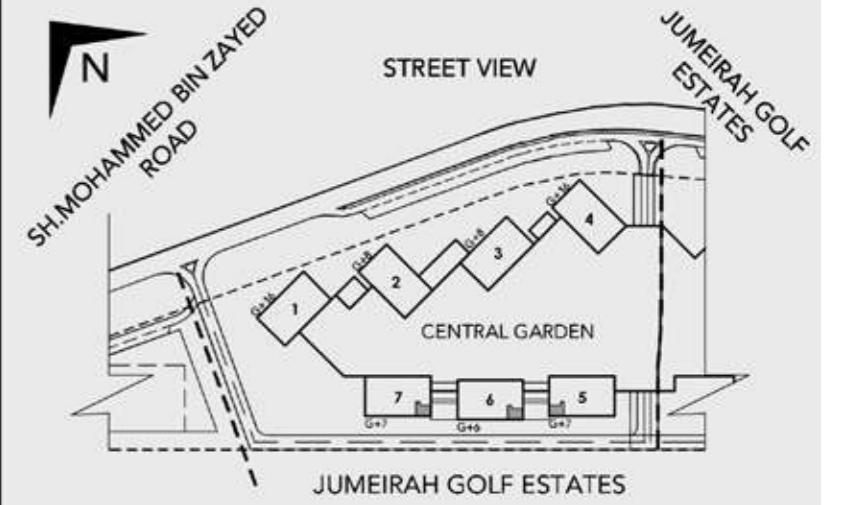


AFNAN 5,6 & 7
ONE BEDROOM APARTMENT - TYPE G

1BR/G



TYPE	UNIT NO.	LEVEL	UNIT (SQ.FT.)	BALCONY (SQ.FT.)	TOTAL (SQ.FT.)	TOTAL COUNT (NO.)
1BR/G	05, 10 & 17	2-4	679	96	775	9



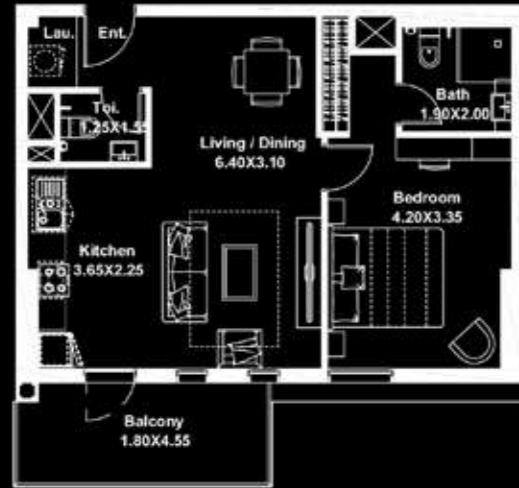
AFNAN 7

AFNAN 6

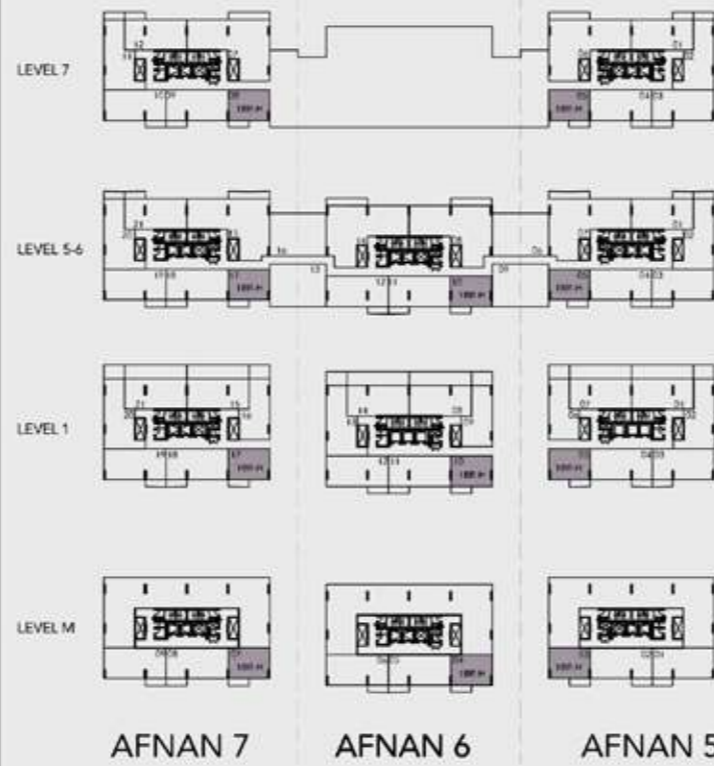
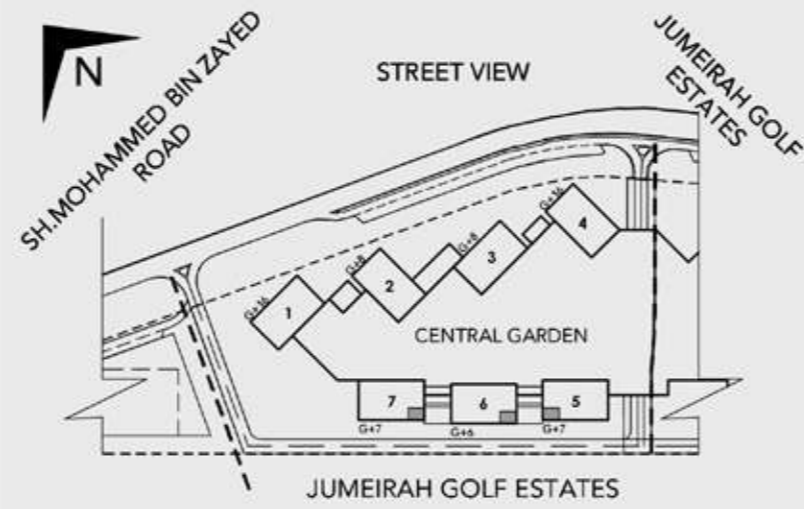
AFNAN 5

AFNAN 5,6 & 7
ONE BEDROOM APARTMENT - TYPE H

1BR/H

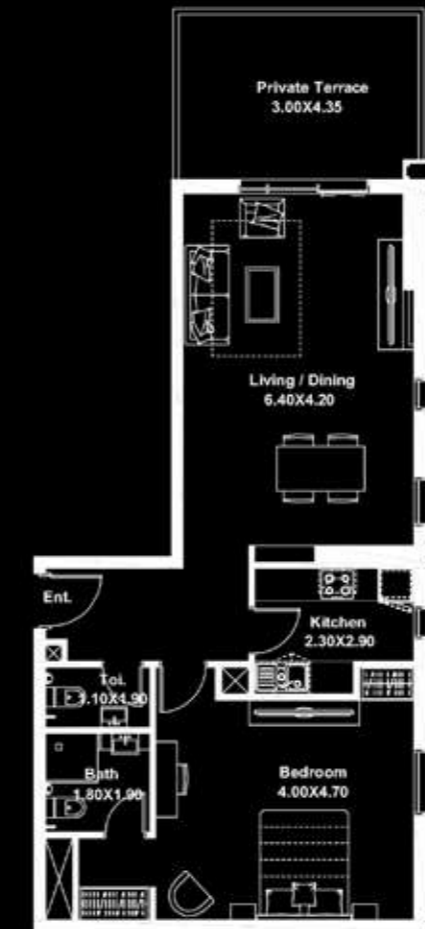


TYPE	UNIT NO.	LEVEL	UNIT (SQ.FT.)	BALCONY (SQ.FT.)	TOTAL (SQ.FT.)	TOTAL COUNT (NO.)
1BR/H	03, 04 & 07	M	649	94	743	8
	05, 10 & 17	1				
	05 & 08	7				
	05, 10 & 17	5, 6				

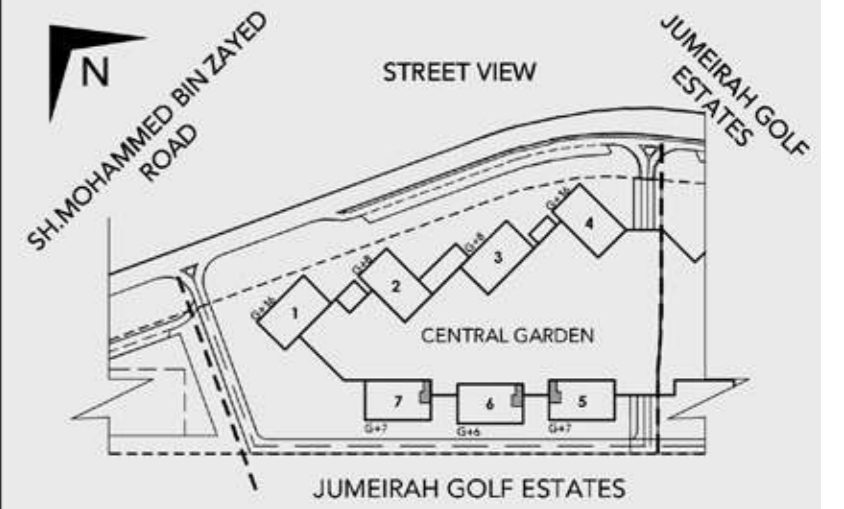


AFNAN 5,6 & 7
ONE BEDROOM APARTMENT - TYPE I

1BR/I



TYPE	UNIT NO.	LEVEL	UNIT (SQ.FT.)	BALCONY (SQ.FT.)	TOTAL (SQ.FT.)	TOTAL COUNT (NO.)
1BR/I	06, 09 & 16	1	824	150	974	3

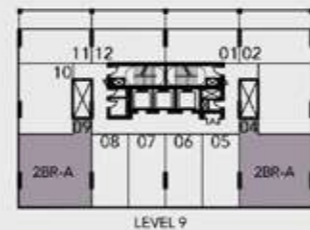
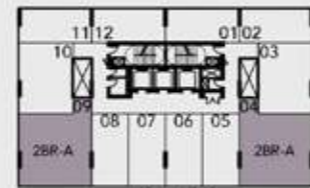
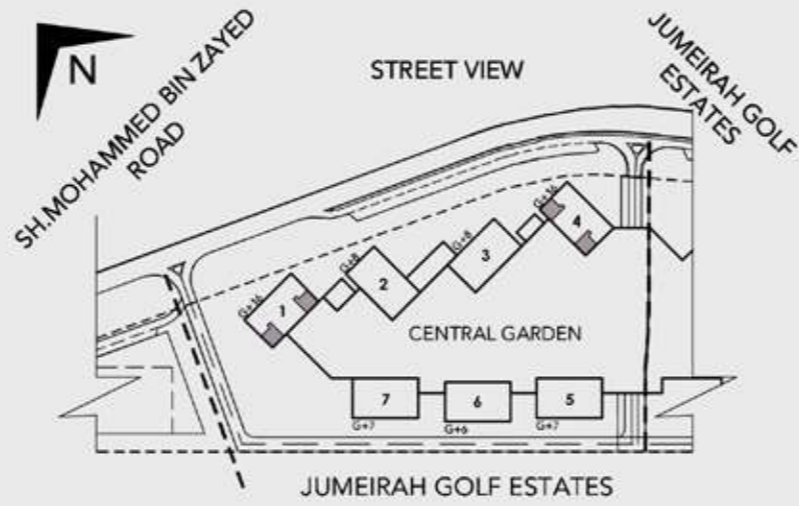


AFNAN 1 & 4
TWO BEDROOM APARTMENT - TYPE A

2BR/A



TYPE	UNIT NO.	LEVEL	UNIT (SQ.FT.)	BALCONY (SQ.FT.)	TOTAL (SQ.FT.)	TOTAL COUNT (NO.)
2BR/A	04 & 09	9-16	904	63	967	32

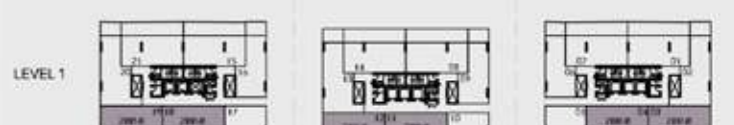
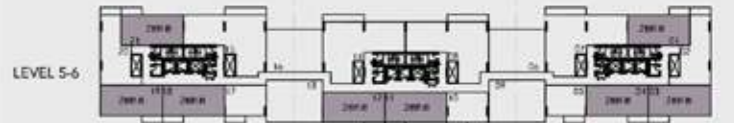
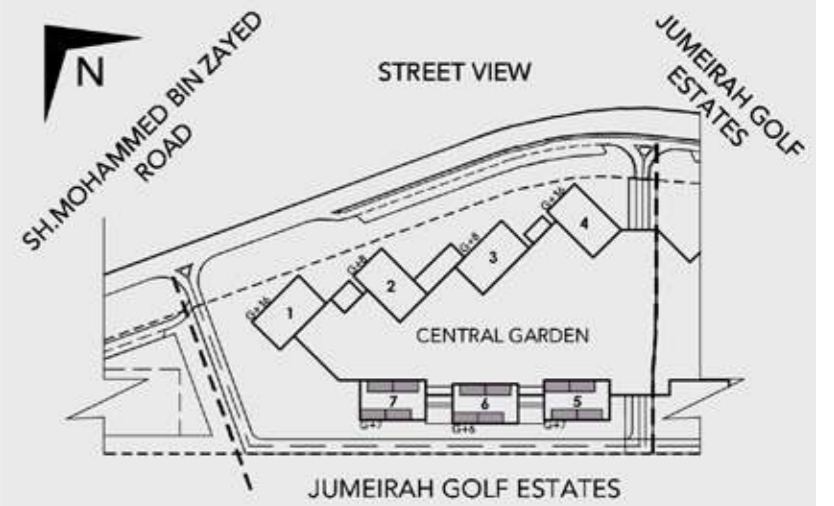


AFNAN 5,6 & 7
TWO BEDROOM APARTMENT - TYPE B

2BR/B



TYPE	UNIT NO.	LEVEL	UNIT (SQ.FT.)	BALCONY (SQ.FT.)	TOTAL (SQ.FT.)	TOTAL COUNT (NO.)
2BR/B	01, 06 & 09	M	961	98	1,059	23
	03, 12 & 19	1-6				
	03 & 10	7				
	02, 05 & 08	M				
	04, 11 & 18	1-6	990	98	1,088	23
	04 & 09	7				
	01, 07, 08, 14, 15 & 21	2-4				
	01 & 21	5-6				
01 & 12	7	1,008	95	1,103	24	



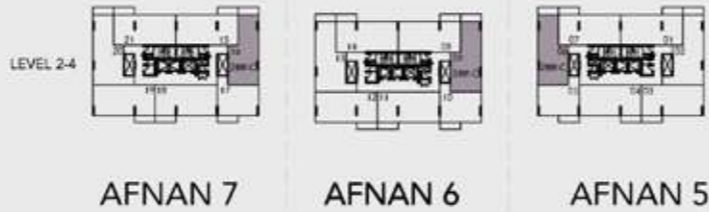
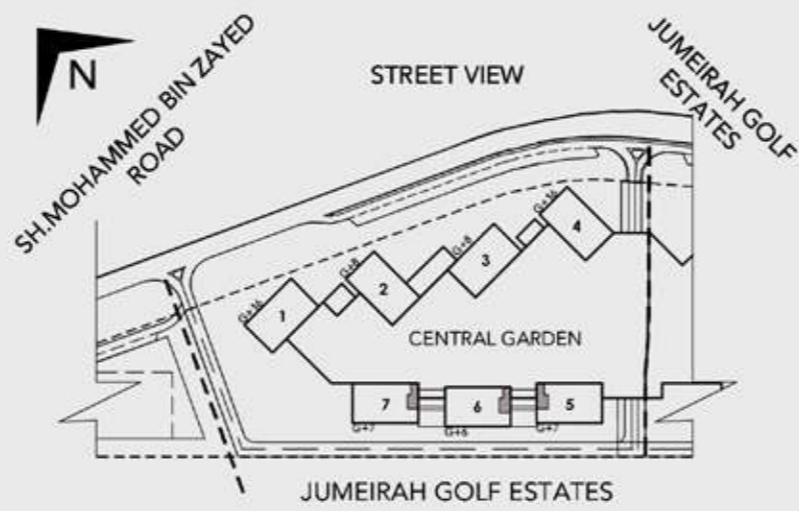
AFNAN 7 AFNAN 6 AFNAN 5

AFNAN 5,6 & 7
TWO BEDROOM APARTMENT - TYPE C

2BR/C

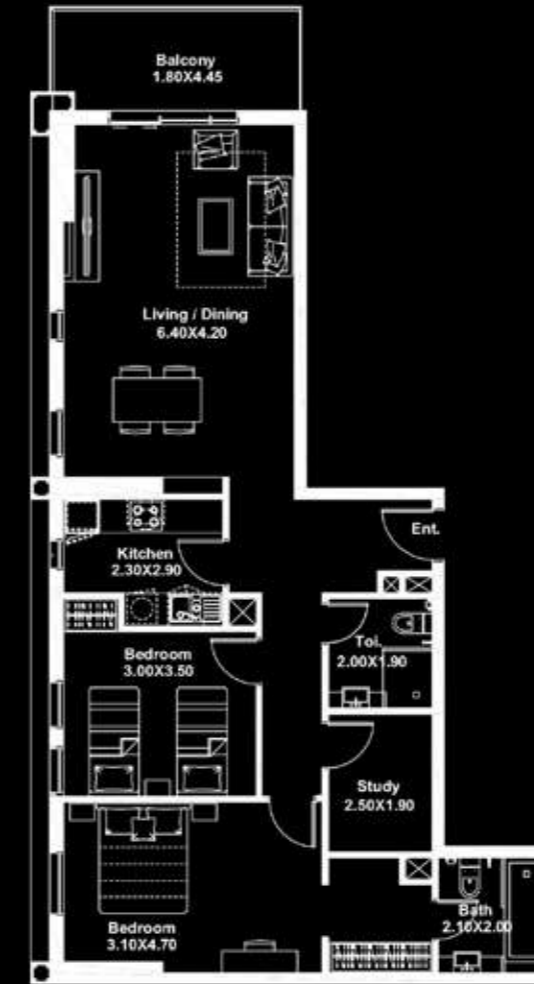


TYPE	UNIT NO.	LEVEL	UNIT (SQ.FT.)	BALCONY (SQ.FT.)	TOTAL (SQ.FT.)	TOTAL COUNT (NO.)
2BR/C	06, 09 & 16	2-4	994	93	1,087	9

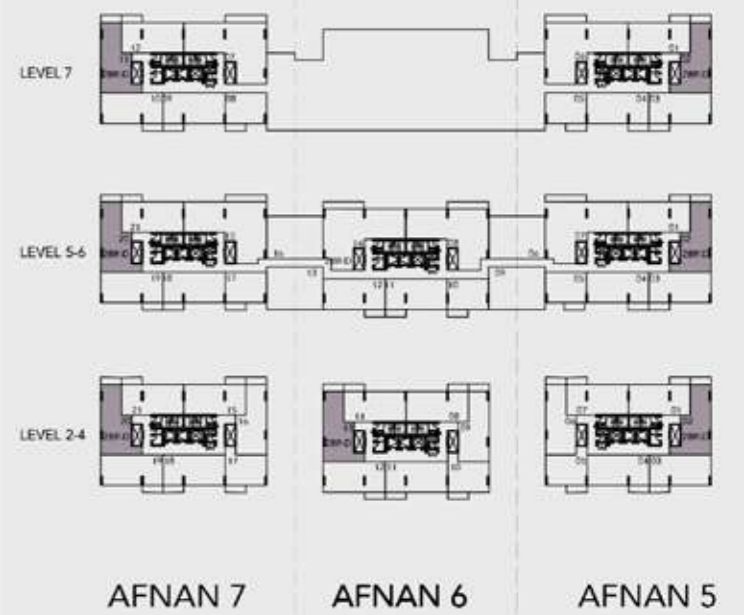
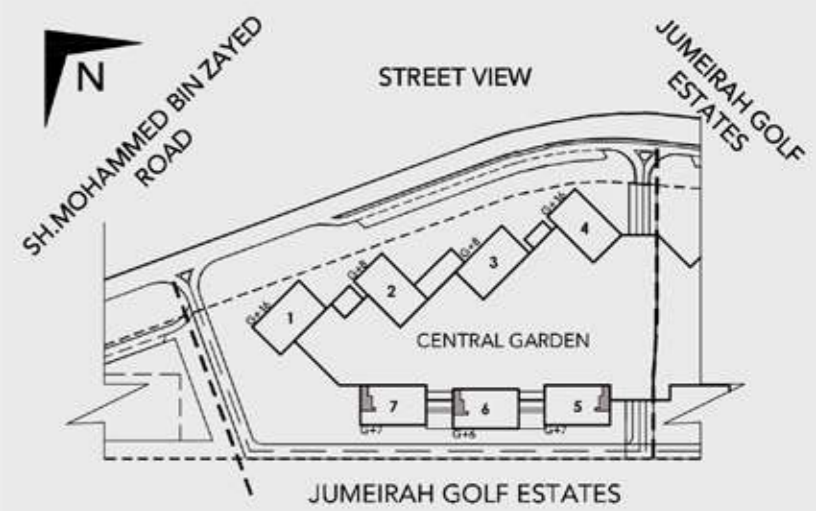


AFNAN 5,6 & 7
TWO BEDROOM APARTMENT - TYPE D

2BR/D

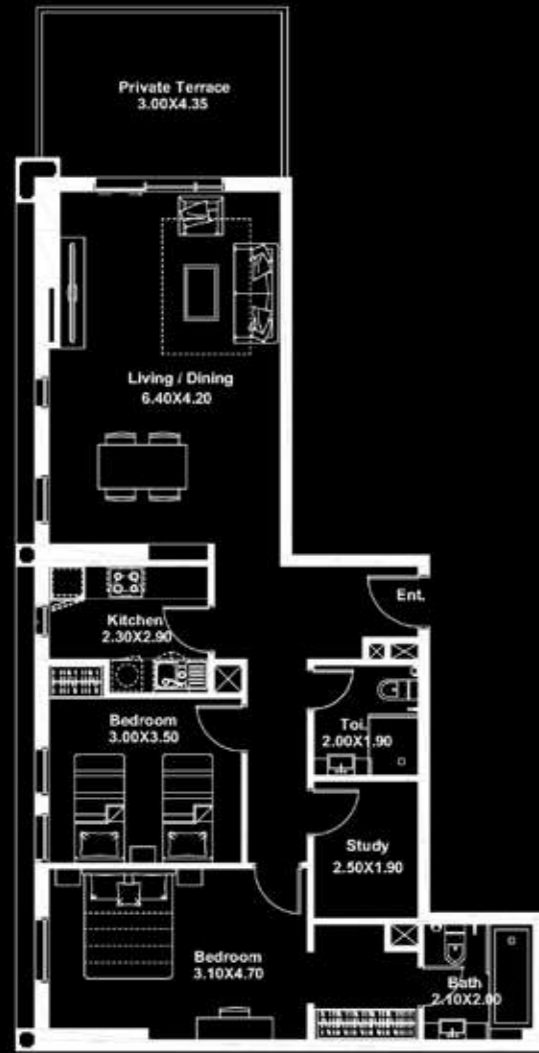


TYPE	UNIT NO.	LEVEL	UNIT (SQ.FT.)	BALCONY (SQ.FT.)	TOTAL (SQ.FT.)	TOTAL COUNT (NO.)
2BR/D	02, 13 & 20	2-4	1,049	92	1,141	15
	02 & 20	5-6				
	02 & 11	7				

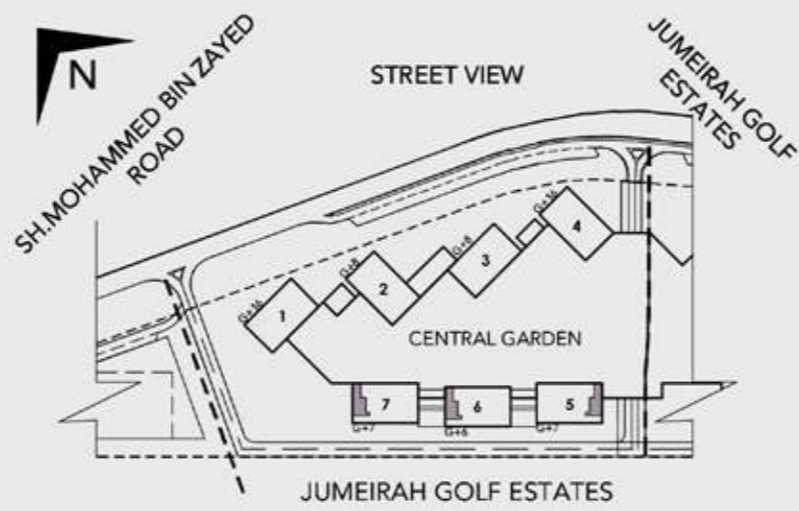


AFNAN 5,6 & 7
TWO BEDROOM APARTMENT - TYPE E

2BR/E



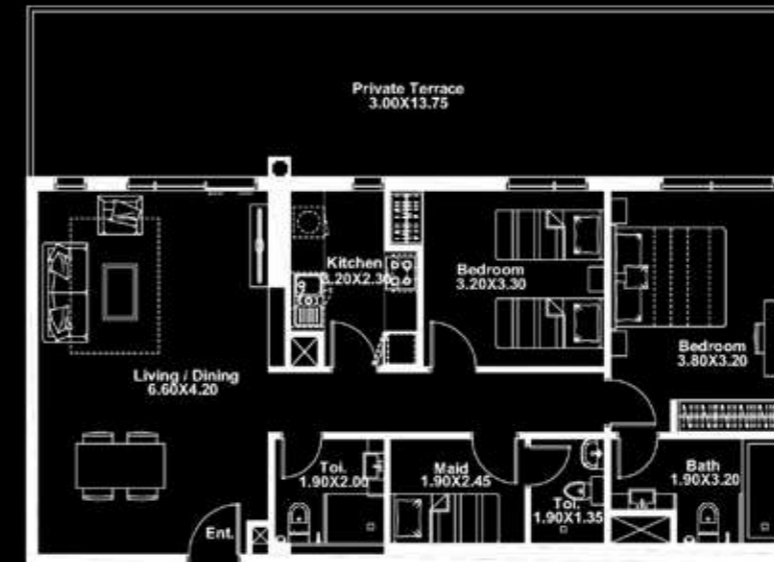
TYPE	UNIT NO.	LEVEL	UNIT (SQ.FT.)	BALCONY (SQ.FT.)	TOTAL (SQ.FT.)	TOTAL COUNT (NO.)
2BR/E	02, 13 & 20	1	1,049	150	1,199	3



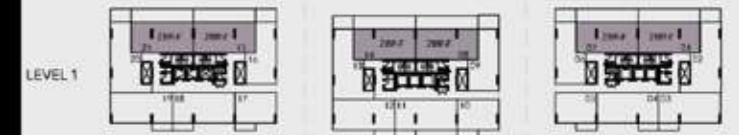
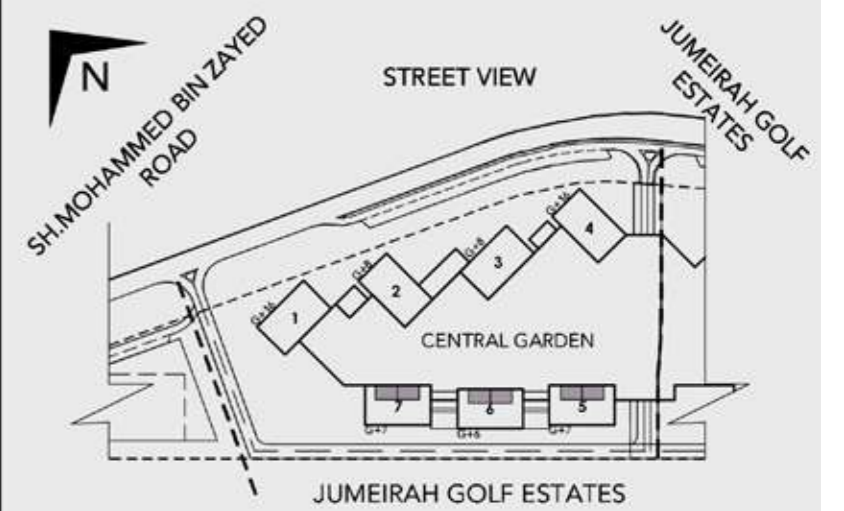
AFNAN 7 AFNAN 6 AFNAN 5

AFNAN 5,6 & 7
TWO BEDROOM APARTMENT - TYPE F

2BR/F



TYPE	UNIT NO.	LEVEL	UNIT (SQ.FT.)	BALCONY (SQ.FT.)	TOTAL (SQ.FT.)	TOTAL COUNT (NO.)
2BR/F	01, 07, 08, 14, 15 & 21	1	1,008	459	1,467	6



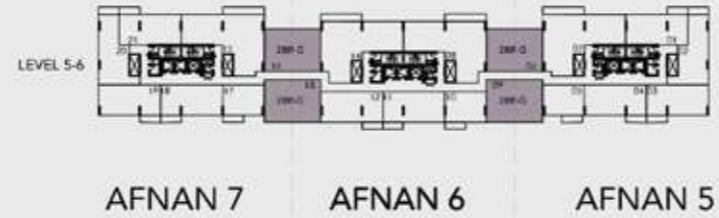
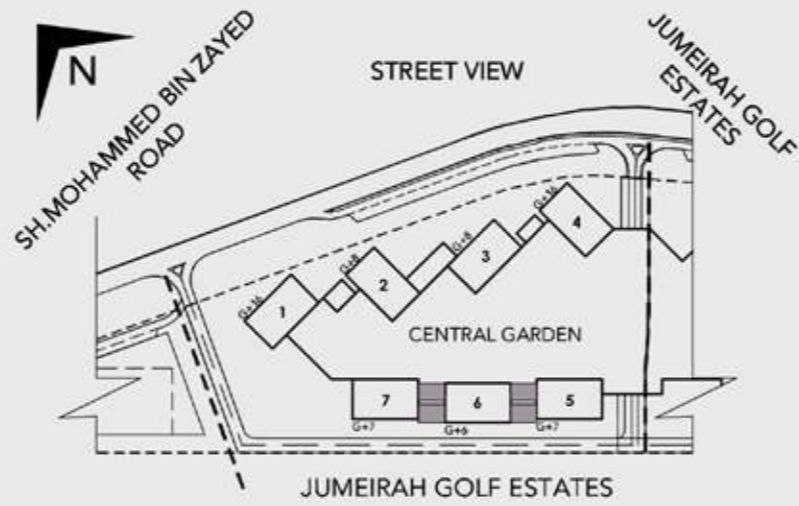
AFNAN 7 AFNAN 6 AFNAN 5

AFNAN 5,6 & 7
TWO BEDROOM APARTMENT - TYPE G

2BR/G



TYPE	UNIT NO.	LEVEL	UNIT (SQ.FT.)	BALCONY (SQ.FT.)	TOTAL (SQ.FT.)	TOTAL COUNT (NO.)
2BR/G	06, 09, 13 & 16	5-6	1,158	120	1,278	8

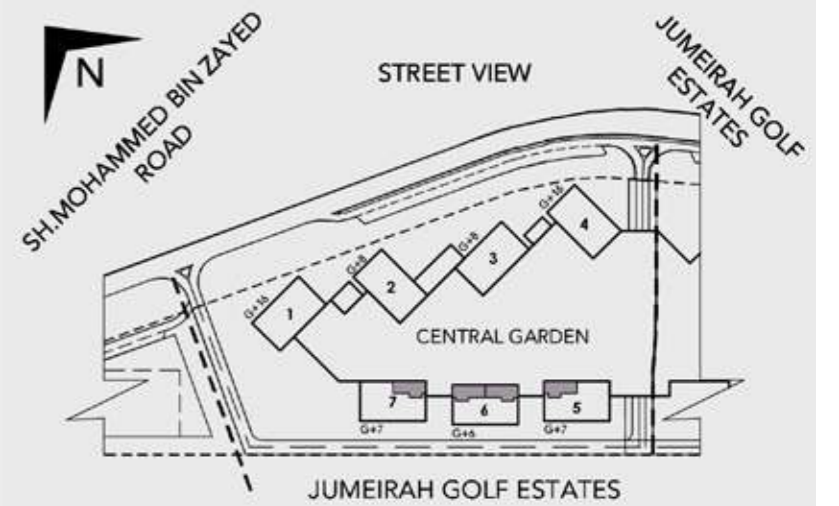


AFNAN 5,6 & 7
THREE BEDROOM APARTMENT - TYPE A

3BR/A



TYPE	UNIT NO.	LEVEL	UNIT (SQ.FT.)	BALCONY (SQ.FT.)	TOTAL (SQ.FT.)	TOTAL COUNT (NO.)
3BR/A	07,08,14 & 15	5-6	1,481	196	1,677	8
	06 & 07	7	1,481	196	1,677	2





أفنان ديستركت
AFNAN DISTRICT



CONTACT US

Toll Free : 800 37373

Hotline : +971 52 754 3244

Email : sales@drehomes.com

Visit Us For More Info:-

<https://drehomes.com/property/deyaar-afnan-district-apartments/>