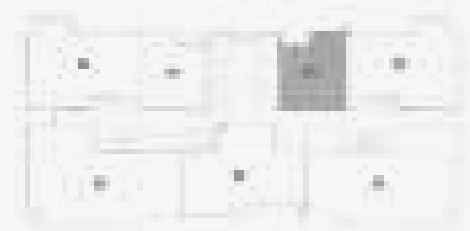
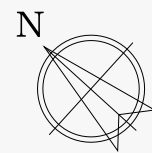




FLOOR PLANS

CREEKSIDE 18
TOWER B | UNIT 01

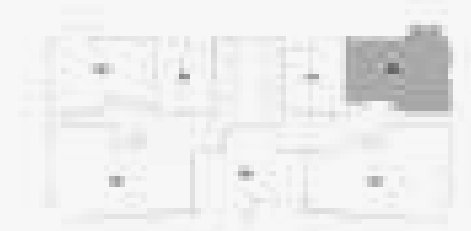


1 BEDROOM W/BALCONY
TOWER B | UNIT 01 | LEVEL 2-16, 18-33

SUITE AREA	611.00 sq.ft. / 56.74 sq.m.
BALCONY AREA	69.00 sq.ft. / 6.38 sq.m.
TOTAL AREA	680.00 sq.ft. / 63.12 sq.m.

1. All dimensions are in imperial and metric, and measured to structural elements and exclude wall finishes and construction tolerances.
2. All materials, dimensions, and drawings are approximate only. 3. Information is subject to change without notice, at developer's absolute discretion. 4. Actual area may vary from the stated area.
5. Drawings not to scale. 6. All images used are for illustrative purposes only and do not represent the actual size, features, specifications, fittings, and furnishings. 7. The developer reserves the right to make revisions/alterations, at its absolute discretion, without any liability whatsoever.

CREEKSIDE 18
TOWER B | UNIT 02

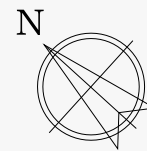


2 BEDROOM W/BALCONY
TOWER B | UNIT 02 | LEVEL 2-16, 18-33

SUITE AREA	1071.00 sq.ft. / 99.54 sq.m.
BALCONY AREA	63.00 sq.ft. / 5.86 sq.m.
TOTAL AREA	1134.00 sq.ft. / 105.40 sq.m.

1. All dimensions are in imperial and metric, and measured to structural elements and exclude wall finishes and construction tolerances.
2. All materials, dimensions, and drawings are approximate only. 3. Information is subject to change without notice, at developer's absolute discretion. 4. Actual area may vary from the stated area.
5. Drawings not to scale. 6. All images used are for illustrative purposes only and do not represent the actual size, features, specifications, fittings, and furnishings. 7. The developer reserves the right to make revisions/alterations, at its absolute discretion, without any liability whatsoever.

CREEKSIDE 18
TOWER B | UNIT 03



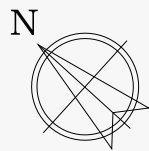
3 BEDROOM W/BALCONY
TOWER B | UNIT 03 | LEVEL 2-16, 18-33

SUITE AREA	1481.00 sq.ft. / 137.63 sq.m.
BALCONY AREA	150.00 sq.ft. / 13.97 sq.m.
TOTAL AREA	1631.00 sq.ft. / 151.60 sq.m.



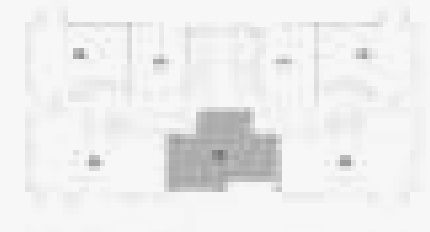
1. All dimensions are in imperial and metric, and measured to structural elements and exclude wall finishes and construction tolerances.
2. All materials, dimensions, and drawings are approximate only. 3. Information is subject to change without notice, at developer's absolute discretion. 4. Actual area may vary from the stated area.
5. Drawings not to scale. 6. All images used are for illustrative purposes only and do not represent the actual size, features, specifications, fittings, and furnishings. 7. The developer reserves the right to make revisions/alterations, at its absolute discretion, without any liability whatsoever.

CREEKSIDE 18
TOWER B | UNIT 04



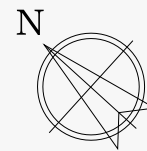
2 BEDROOM W/BALCONY
TOWER B | UNIT 04 | LEVEL 2-16, 18-33

SUITE AREA	1013.00 sq.ft. / 94.09 sq.m.
BALCONY AREA	120.00 sq.ft. / 11.18 sq.m.
TOTAL AREA	1133.00 sq.ft. / 106.27 sq.m.



1. All dimensions are in imperial and metric, and measured to structural elements and exclude wall finishes and construction tolerances.
2. All materials, dimensions, and drawings are approximate only. 3. Information is subject to change without notice, at developer's absolute discretion. 4. Actual area may vary from the stated area.
5. Drawings not to scale. 6. All images used are for illustrative purposes only and do not represent the actual size, features, specifications, fittings, and furnishings. 7. The developer reserves the right to make revisions/alterations, at its absolute discretion, without any liability whatsoever.

CREEKSIDE 18
TOWER B | UNIT 05

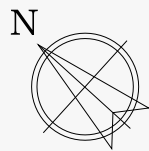


3 BEDROOM W/BALCONY
TOWER B | UNIT 05 | LEVEL 2-16, 18-33

SUITE AREA	1480.00 sq.ft. / 137.48 sq.m.
BALCONY AREA	150.00 sq.ft. / 13.97 sq.m.
TOTAL AREA	1630.00 sq.ft. / 151.45 sq.m.

1. All dimensions are in imperial and metric, and measured to structural elements and exclude wall finishes and construction tolerances.
2. All materials, dimensions, and drawings are approximate only. 3. Information is subject to change without notice, at developer's absolute discretion. 4. Actual area may vary from the stated area.
5. Drawings not to scale. 6. All images used are for illustrative purposes only and do not represent the actual size, features, specifications, fittings, and furnishings. 7. The developer reserves the right to make revisions/alterations, at its absolute discretion, without any liability whatsoever.

CREEKSIDE 18
TOWER B | UNIT 06

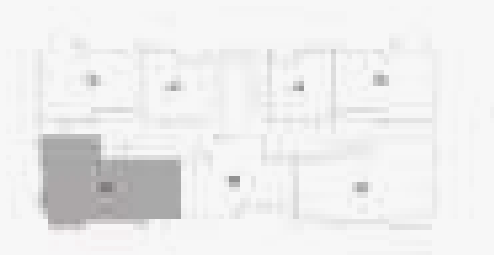
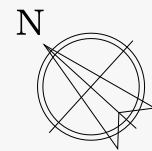


2 BEDROOM W/BALCONY
TOWER B | UNIT 06 | LEVEL 2-16, 18-33

SUITE AREA	1070.00 sq.ft. / 99.39 sq.m.
BALCONY AREA	63.00 sq.ft. / 5.86 sq.m.
TOTAL AREA	1133.00 sq.ft. / 105.25 sq.m.

1. All dimensions are in imperial and metric, and measured to structural elements and exclude wall finishes and construction tolerances.
2. All materials, dimensions, and drawings are approximate only. 3. Information is subject to change without notice, at developer's absolute discretion. 4. Actual area may vary from the stated area.
5. Drawings not to scale. 6. All images used are for illustrative purposes only and do not represent the actual size, features, specifications, fittings, and furnishings. 7. The developer reserves the right to make revisions/alterations, at its absolute discretion, without any liability whatsoever.

CREEKSIDE 18
TOWER B | UNIT 07



1 BEDROOM W/BALCONY
TOWER B | UNIT 07 | LEVEL 2-16, 18-33

SUITE AREA	611.00 sq.ft. / 56.74 sq.m.
BALCONY AREA	69.00 sq.ft. / 6.38 sq.m.
TOTAL AREA	680.00 sq.ft. / 63.12 sq.m.

1. All dimensions are in imperial and metric, and measured to structural elements and exclude wall finishes and construction tolerances.
2. All materials, dimensions, and drawings are approximate only. 3. Information is subject to change without notice, at developer's absolute discretion. 4. Actual area may vary from the stated area.
5. Drawings not to scale. 6. All images used are for illustrative purposes only and do not represent the actual size, features, specifications, fittings, and furnishings. 7. The developer reserves the right to make revisions/alterations, at its absolute discretion, without any liability whatsoever.



CONTACT US

Toll-Free: 800 37373

Hotline : +971 52 754 3244

Email : sales@drehomes.com

Visit Us For More Info:-

<https://drehomes.com/property/emaar-creekside-18-apartment/>