

DANUBE
PROPERTIES






OLIVZ
BY ***DANUBE***

STUDIO

TYPE 1 & 2 - STUDIO UNIT



TOTAL AREA RANGE
394.39 - 424.53 SQ. FT.

STUDIO UNIT - TYPE 1
AREA: 394.39 SQ.FT.
FLAT NOS. (TYPICAL FLOOR)
BLOCK 1 & 3: 01, 02, 03, 04, 17, 18
BLOCK 4 & 5: 01, 02, 09, 22, 23, 24, 25, 27

STUDIO UNIT - TYPE 2
AREA: 424.53 SQ.FT.
FLAT NOS. (TYPICAL FLOOR)
BLOCK 1 & 3: 13, 14, 15, 16
BLOCK 4 & 5: 14, 15, 16, 17

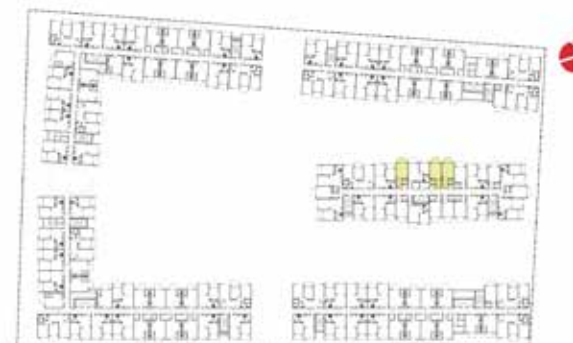
OLIVZ
BY **DANUBE**

For actual sizes please refer SPA

Disclaimer: All design, features, amenities, materials, dimensions, layout drawings are approximate, information is subject to change without notice; Actual area of the Unit may vary from the stated area, Drawings not to scale; Developer reserves the right to make revisions to comply with any Applicable Law or the requirements of any Relevant Authority;

STUDIO

TYPE 3 & 4 - STUDIO UNIT



TOTAL AREA RANGE
367.05 - 382.88 SQ. FT.

STUDIO UNIT - TYPE 3

AREA: 367.05 SQ.FT.

FLAT NOS. (TYPICAL FLOOR)

BLOCK 1 & 3: 21

BLOCK 2: 01, 02, 03, 06, 08, 10, 18, 22

STUDIO UNIT - TYPE 4

AREA: 382.88 SQ.FT.

FLAT NOS. (TYPICAL FLOOR)

BLOCK 2: 11, 12, 14



For actual sizes please refer SPA

Disclaimer: All design, features, amenities, materials, dimensions, layout drawings are approximate, information is subject to change without notice; Actual area of the Unit may vary from the stated area, Drawings not to scale; Developer reserves the right to make revisions to comply with any Applicable Law or the requirements of any Relevant Authority;

1 BR

TYPE 1 & 2 - 1 BR UNIT



TOTAL AREA RANGE
632.06 - 674.24 SQ. FT.

1 BEDROOM UNIT - TYPE 1 - AREA: 632.06 SQ.FT.

FLAT NOS. (TYPICAL FLOOR)

BLOCK 1 & 3: 05, 06, 07, 09, 10, 11, 12

BLOCK 2: 04, 09, 15, 20, 21

BLOCK 4 & 5: 04, 05, 06, 07, 08, 11, 12, 13, 18, 19, 21, 26

1 BEDROOM UNIT - TYPE 2

AREA: 674.24 SQ.FT.

FLAT NOS. (TYPICAL FLOOR)

BLOCK 2: 05, 07, 17, 19,


BY DANUBE

For actual sizes please refer SPA

Disclaimer: All design, features, amenities, materials, dimensions, layout drawings are approximate, information is subject to change without notice; Actual area of the Unit may vary from the stated area, Drawings not to scale; Developer reserves the right to make revisions to comply with any Applicable Law or the requirements of any Relevant Authority;

1 BR

TYPE 3 - 1 BR UNIT



TOTAL AREA RANGE

557.58 SQ. FT.

1 BEDROOM UNIT - TYPE 3

AREA: 557.58 SQ.FT.

FLAT NOS. (TYPICAL FLOOR)

BLOCK 2: 13, 23



For actual sizes please refer SPA

Disclaimer: All design, features, amenities, materials, dimensions, layout drawings are approximate, information is subject to change without notice; Actual area of the Unit may vary from the stated area, Drawings not to scale; Developer reserves the right to make revisions to comply with any Applicable Law or the requirements of any Relevant Authority;

2 BR

2 BR UNIT



TOTAL AREA RANGE

935.06 SQ. FT.

2 BEDROOM UNIT

AREA: 935.06 SQ.FT.

FLAT NOS. (TYPICAL FLOOR)

BLOCK 1 & 3: 08, 19, 20

BLOCK 2: 16

BLOCK 4 & 5: 03, 10, 20



For actual sizes please refer SPA

Disclaimer: All design, features, amenities, materials, dimensions, layout drawings are approximate, information is subject to change without notice; Actual area of the Unit may vary from the stated area, Drawings not to scale; Developer reserves the right to make revisions to comply with any Applicable Law or the requirements of any Relevant Authority;



CONTACT US

Toll Free : 800 37373

Hotline : +971 52 754 3244

Email : sales@drehomes.com

Visit Us For More Info:-

<https://drehomes.com/property/danube-olivz-apartments-warsan/>

DANUBE
PROPERTIES