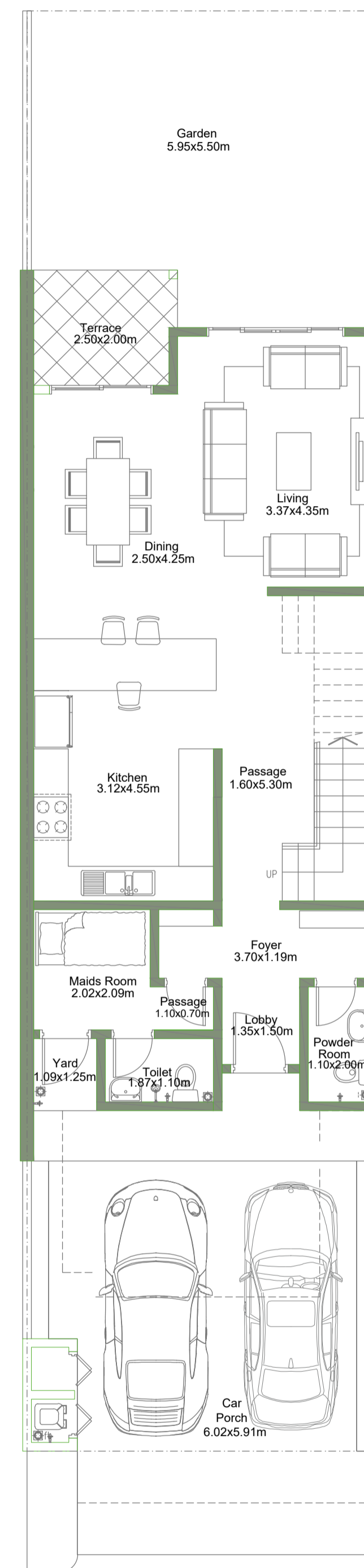


# Townhouse

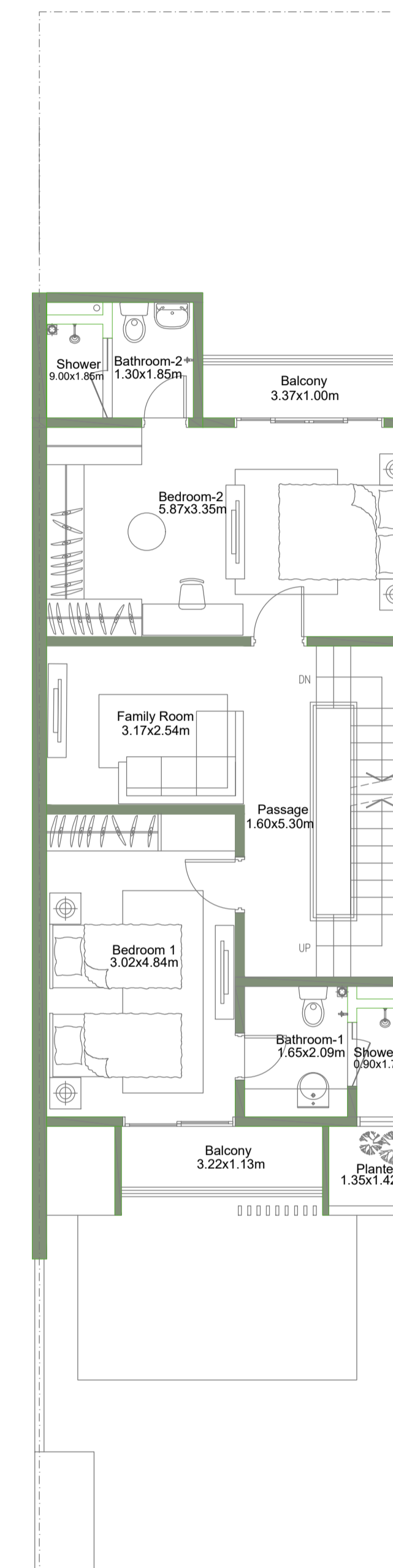
## TYPE A

Total gross floor area: 279 m<sup>2</sup> (3,002 sq.ft.)

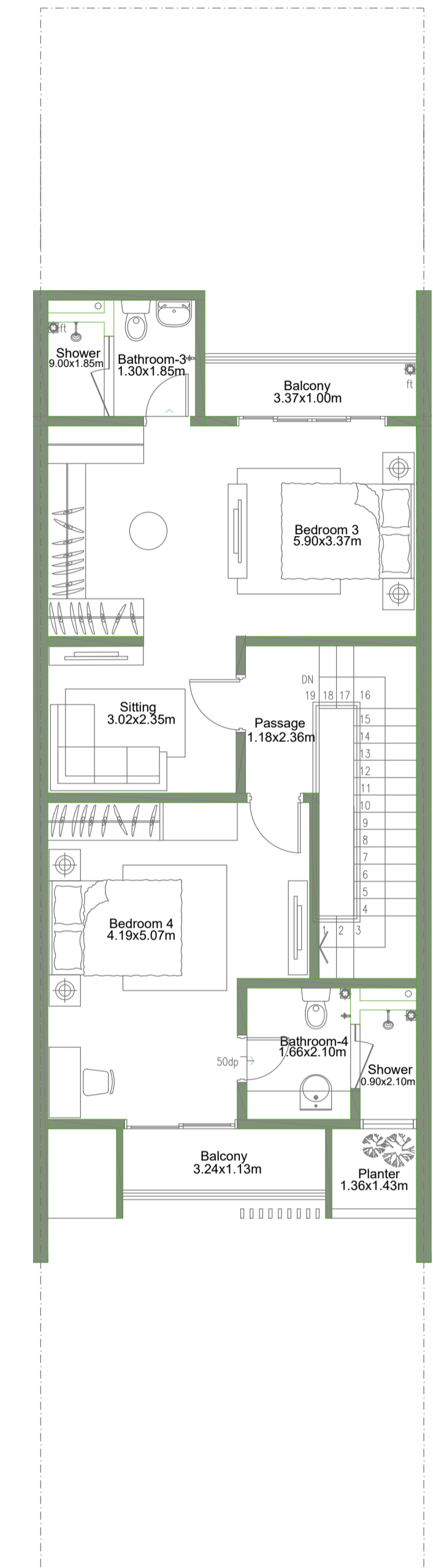
4 bedrooms + family room + maid's room



Ground Floor



First Floor



Second Floor

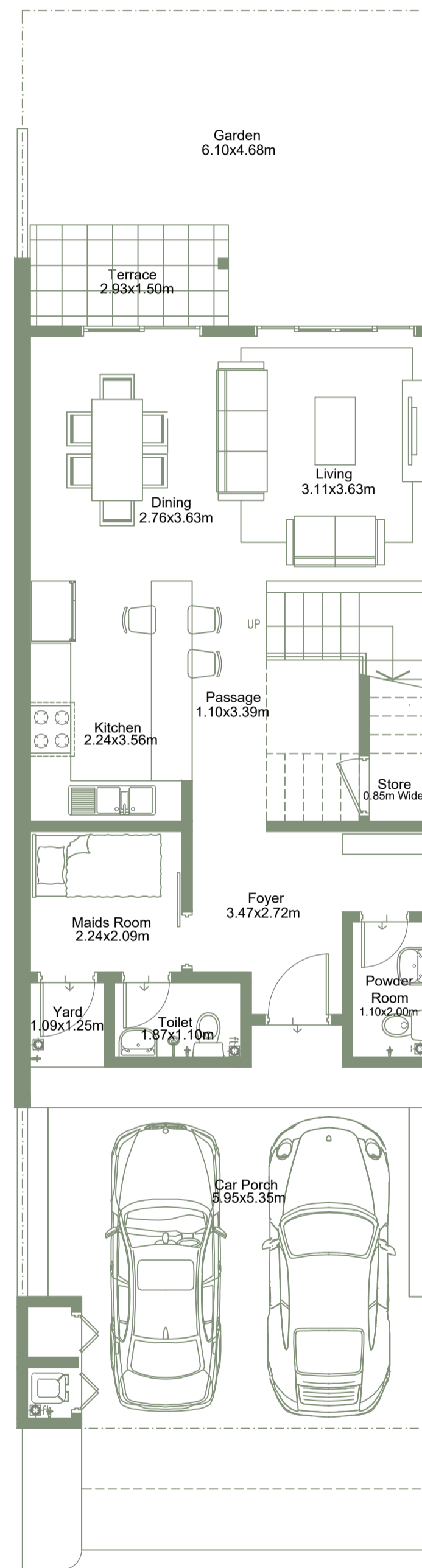
\* All images used are for illustrative purposes only and do not represent the actual size, features, specifications, fittings and furnishing. All materials, dimensions, and drawings are approximate only.

# Townhouse

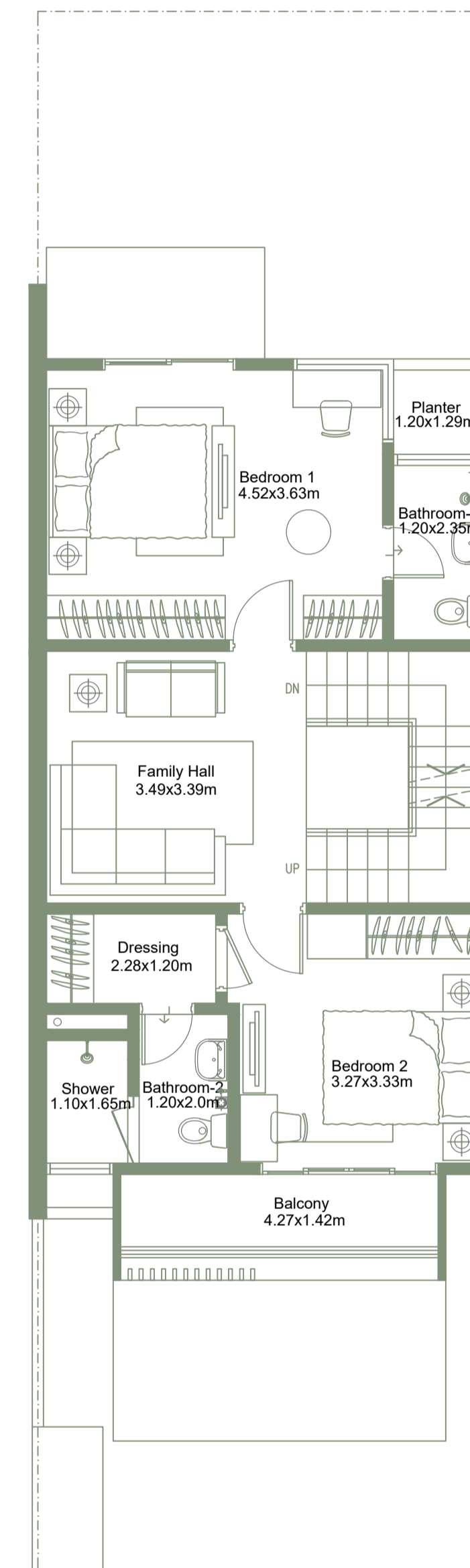
## TYPE B

Total gross floor area: 243 m<sup>2</sup>(2,615 sq.ft. )

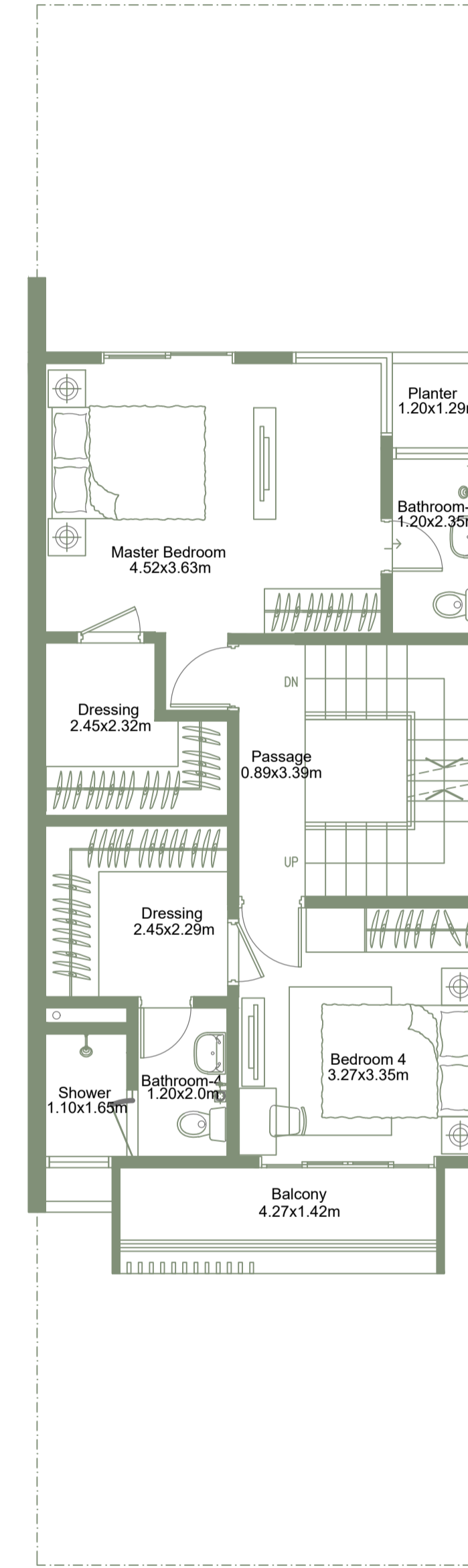
4 bedrooms + family room + maid's room



Ground Floor



First Floor



Second Floor

\* All images used are for illustrative purposes only and do not represent the actual size, features, specifications, fittings and furnishing. All materials, dimensions, and drawings are approximate only.