

ELAN

EVERY DAY IS A WEEKEND!









تلال الغاف
Tilal Al Ghaf



BE AT THE CENTRE OF IT ALL

Life is great when you are far away from the crowds yet connected to everything that's essential. Elan's central location will allow you easy access to the things most important to you.

- 
Dubai International Airport
29 Mins
- 
Al Maktoum International Airport
25 Mins
- 
Mall of the Emirates
15 Mins
- 
Downtown
20 Mins
- 
Al Qudra cycling track
10 Mins
- 
Dubai Expo
17 Mins

KEY PLAN OF ELAN NEIGHBOURHOOD



ESCAPE THE CITY, EVERY DAY

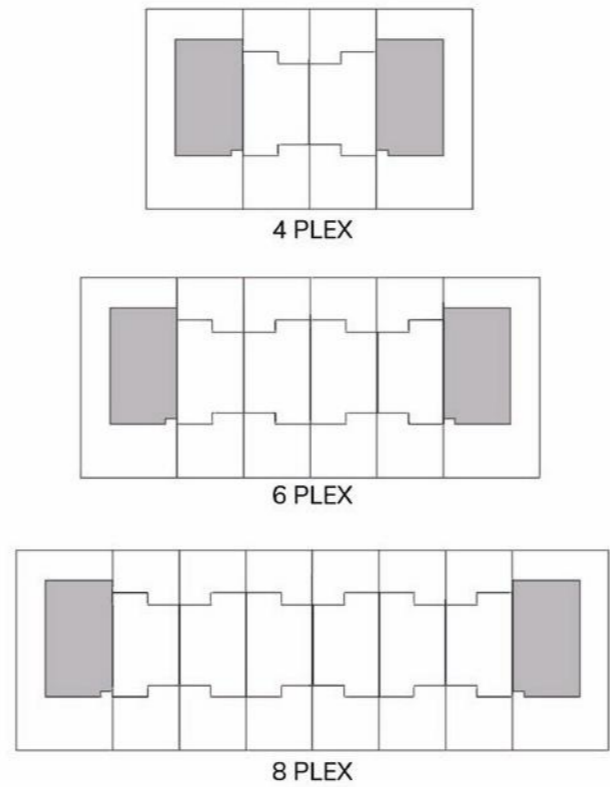
Be part of an exclusive neighbourhood that makes life a joy no matter what day of the week it is.

- 1  Parks & Green Open Spaces
- 2  Fitness Centre
- 3  Gated Community
- 4  Children's Play Areas
- 5  Cycling & Jogging Track
- 6  Nursery
- 7  Convenience Retail/Cafe
- 8  Swimming Pools
- 9  7 minute walk to Recreational Lagoon
- 10  7 minute walk to International School & Community Centre
- 11  1 minute walk to Basketball and Tennis courts

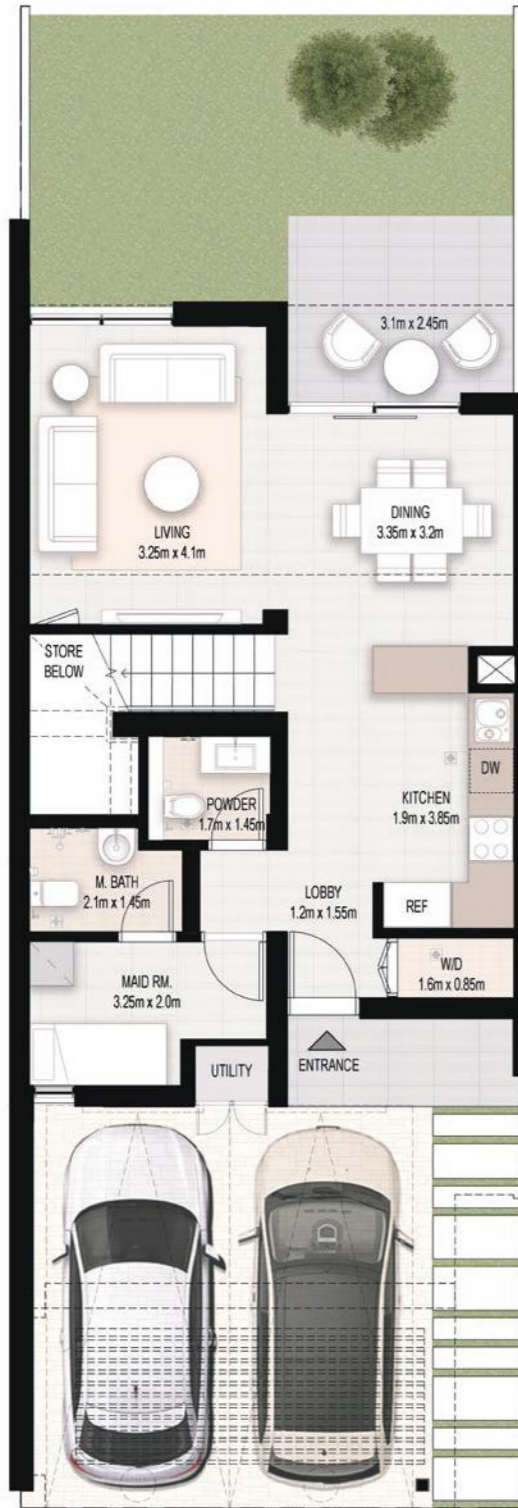


Ground Floor

4 BEDROOM TOWNHOUSE
TOTAL: 219 SQM | 2,354 SQFT

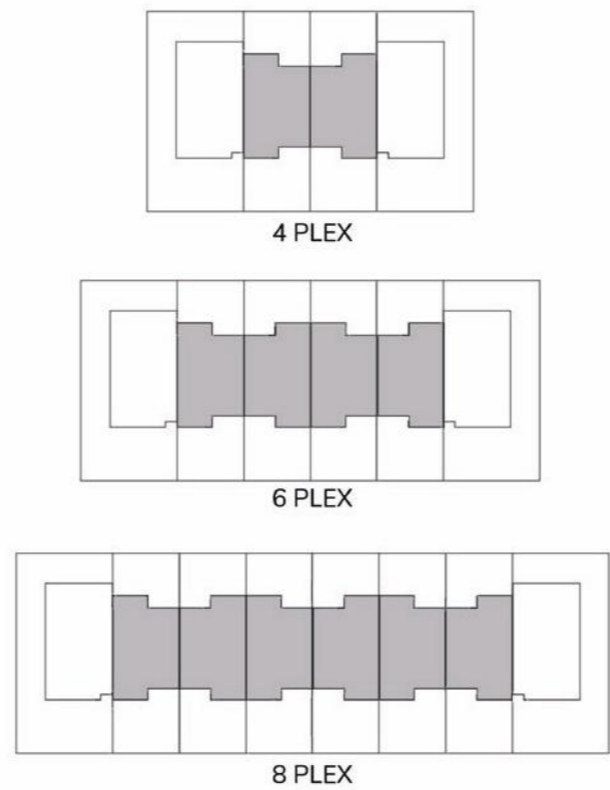


First Floor



Ground Floor

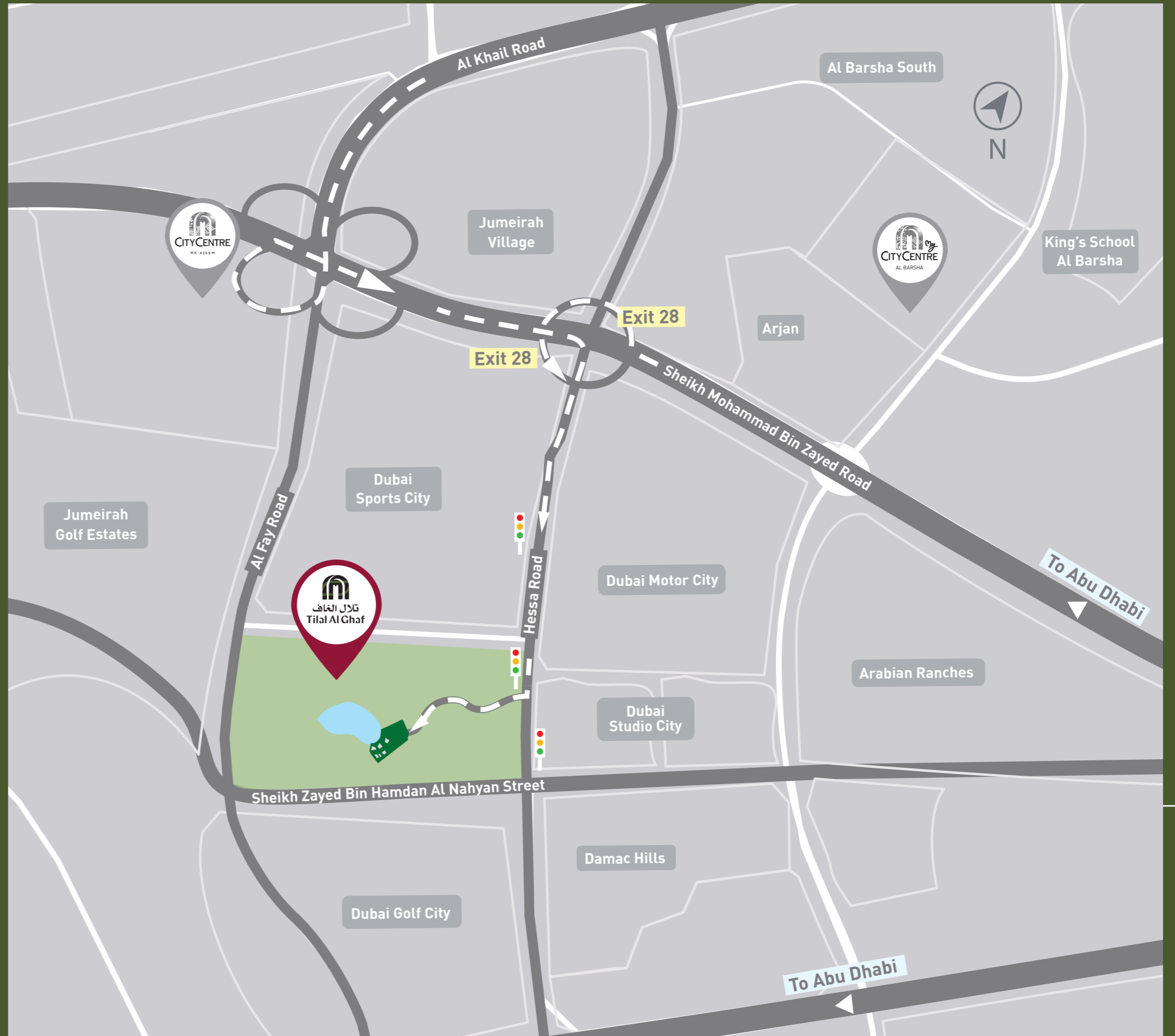
3 BEDROOM TOWNHOUSE
TOTAL: 200 SQM | 2,152 SQFT



First Floor



800 GHAF
(4423)
tilalalghaf.com



The plans, drawings, images, dimensions, area and all information provided herein are indicative, provided for illustrative purposes.



CONTACT US

Toll Free : 800 37373

Hotline : +971 52 754 3244

Email : sales@drehomes.com



تلال الغاف
Tilal Al Ghaf
دبي DUBAI

Visit Us For More Info:-

<https://drehomes.com/property/tilal-al-ghaf-majid-al-futtaim/>