



# HARTLAND GREENS

FLOOR & UNIT PLANS



SOBHA HARTLAND

BUILDING 2 & 3

# Hartland Greens

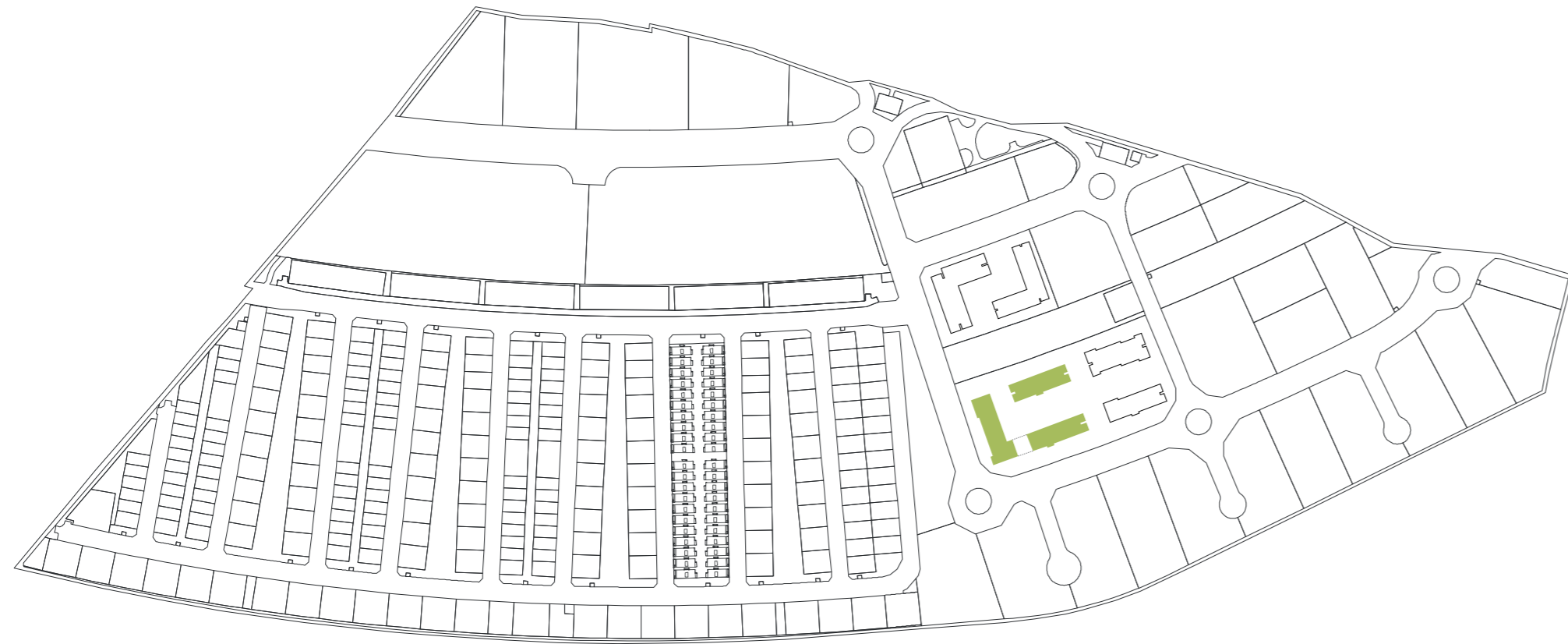
## Modern living nestled in greenery

Hartland Greens is a stunning collection of 6 mid-rise buildings set amidst vast open spaces, completely immersed in nature to offer an idyllic mix of quiet green landscapes infused with the charm of the city life.

Hartland Greens building 2 and 3 are eight floor residential buildings with retail and restaurant options on the ground floor as well as easy access to the swimming pool featuring a choice of spacious and contemporary studios, 1, 2, & 3 bedroom apartments and 2, 3, & 4 bedroom duplexes designed and built with the highest attention to detail reflecting Sobha's signature quality.

Building 2 and 3 apartment sizes range from 531 sq. ft. (49.3 sq. m.) to 3,876 sq. ft. (360.1 sq. m.)

HARTLAND GREENS  
BUILDING 2 & 3



APARTMENT FEATURES



VARIETY OF  
UNIT PLANS



IMPECCABLE  
INTERIORS



UNDERCOVER  
CAR PARKING



FULLY FITTED  
KITCHENS

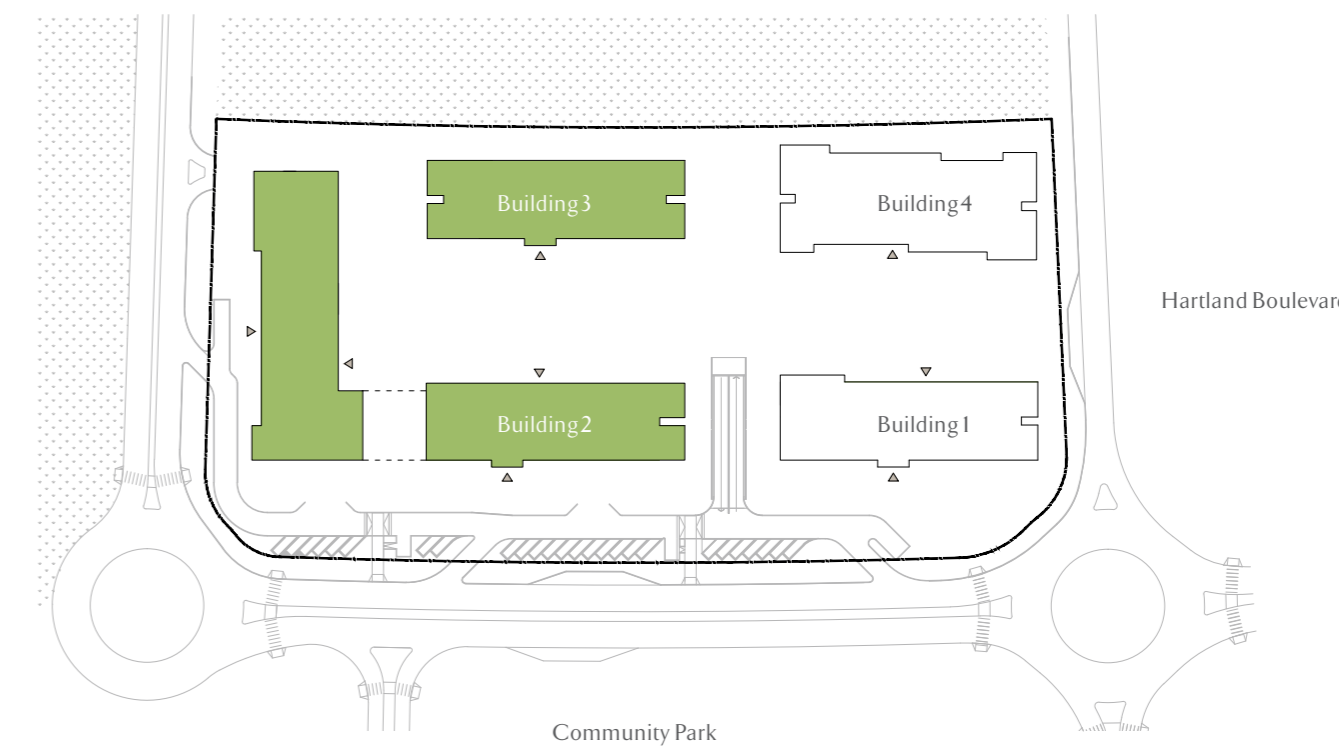
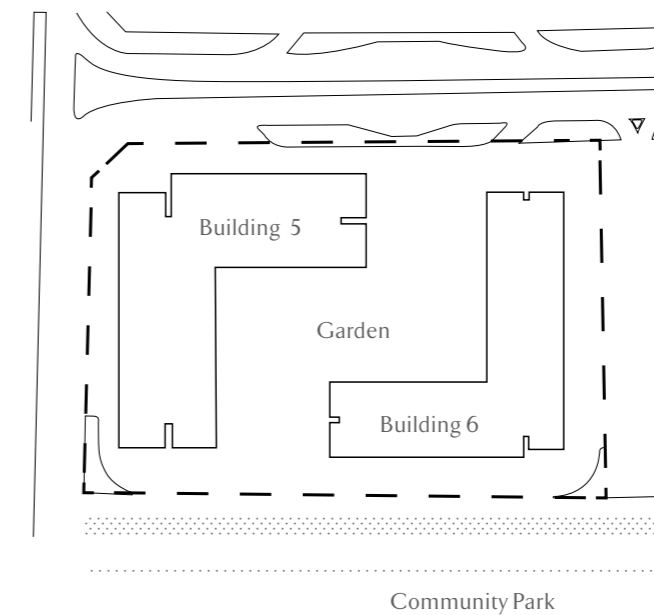


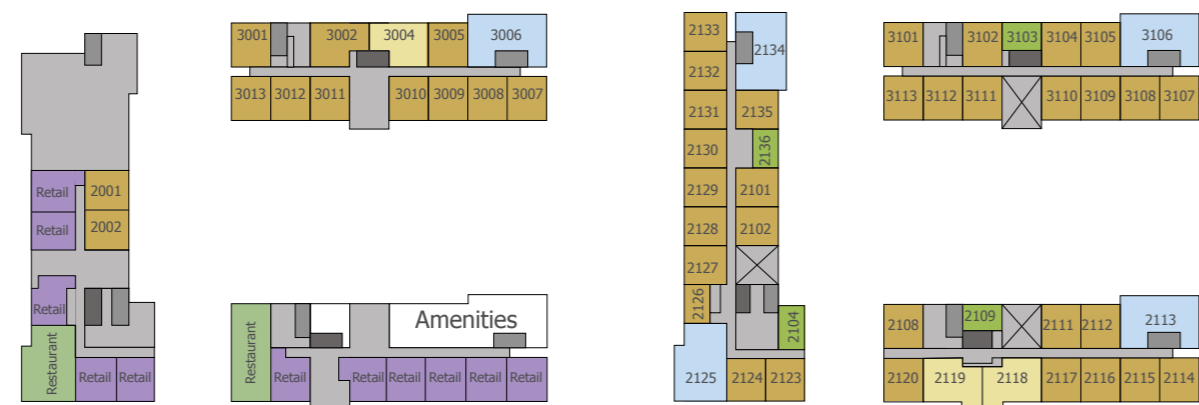
BALCONY  
IN ALL UNITS



BEDROOM WARDROBE  
IN ALL UNITS

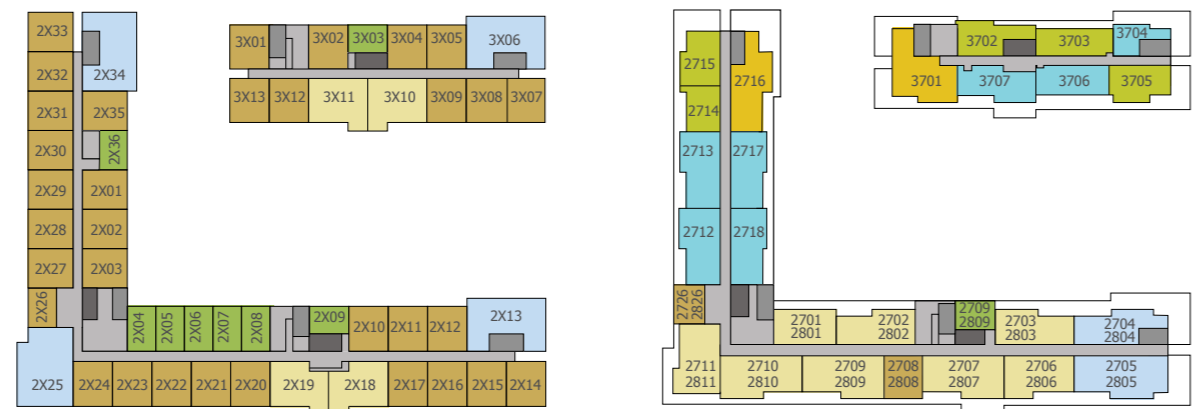
HARTLAND GREENS  
BUILDING 2 & 3





Ground Level

Level 1



Level 2 to Level 6

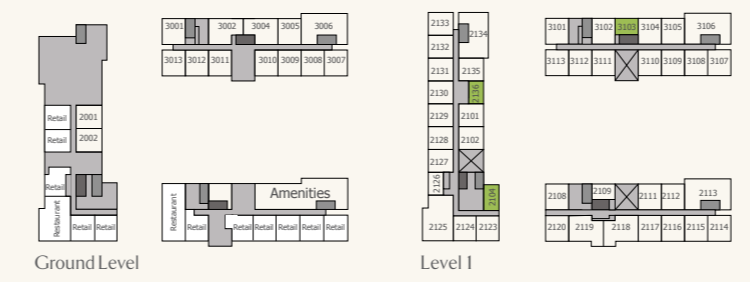
Level 7 and Level 8

- STUDIO
- 1 BEDROOM
- 2 BEDROOM
- 3 BEDROOM
- 2 BEDROOM (duplex)
- 3 BEDROOM (duplex)
- 4 BEDROOM (duplex)
- RETAIL
- RESTAURANT

HARTLAND GREENS

STUDIO APARTMENT

BUILDING 2 & 3  
G+8 MID RISE



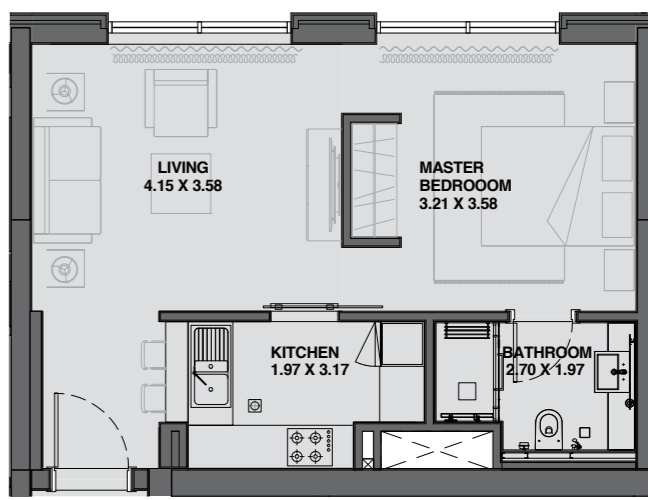
Ground Level

Level 1



Level 2 to Level 6

Level 7 and Level 8



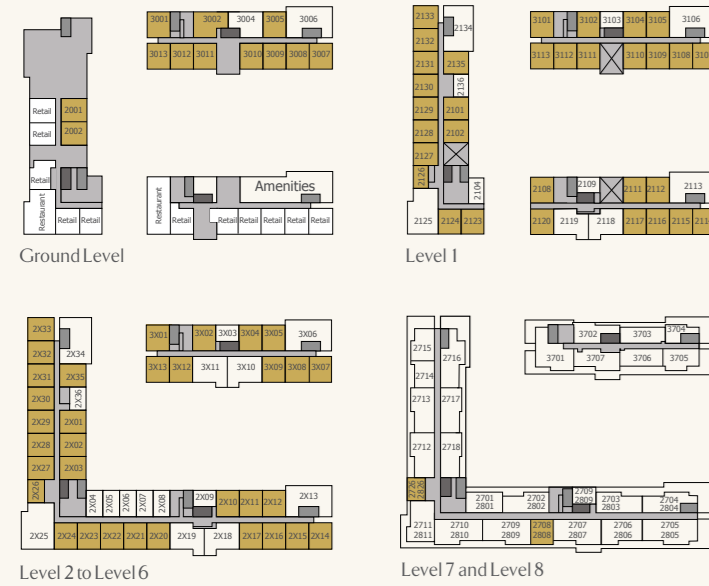
STUDIO APARTMENT – Level 1 to 8

BUILDING 2 - SIZE RANGE 534 - 597 SQ. FT. | 49.61 - 55.4 SQ. M.  
 BUILDING 3 - SIZE RANGE 531 - 533 SQ. FT. | 49.33 - 49.5 SQ. M.

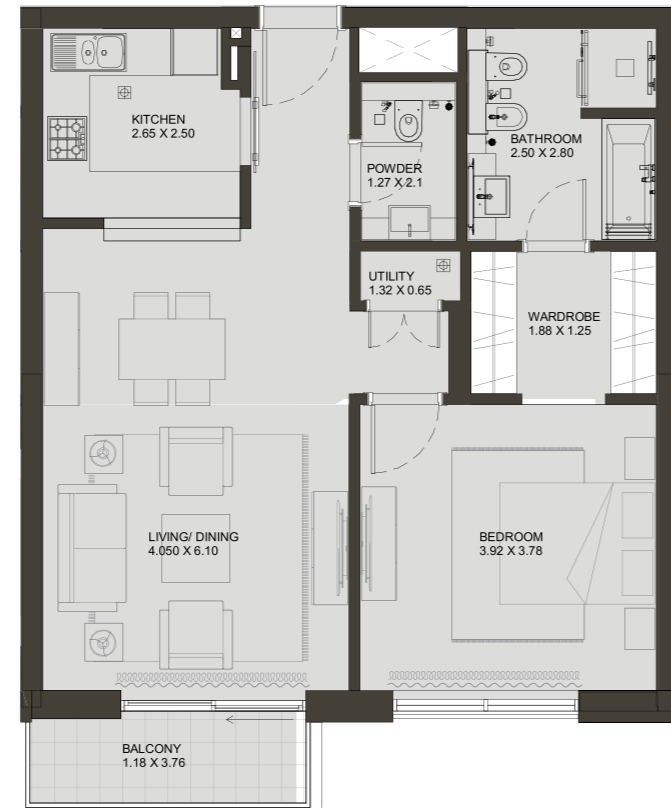
Disclaimer: 1. All dimensions are in metric, measured to wall finishes. 2. All materials, dimensions & drawings are approximate. 3. Information is subject to change without notice, at developer's absolute discretion. 4. Actual area may vary from the stated area. 5. Drawings are not to scale. 6. All images used are for illustrative purposes only and do not represent the actual size, features, specifications, fittings and furnishings. 7. The developer reserves the right to make revisions/ alterations, at its absolute discretion, without any liability whatsoever.

# HARTLAND GREENS

## BUILDING 2 & 3 G+8 MID RISE



# 1 BEDROOM APARTMENT

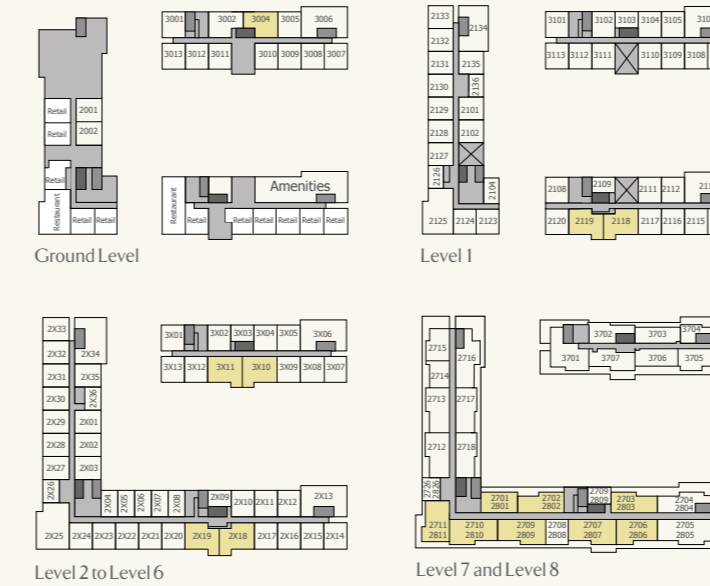


## 1 BEDROOM APARTMENT – Ground Level to Level 8

BUILDING 2 - SIZE RANGE 732 - 1,198 SQ. FT. | 68.0 - 111.2 SQ. M.  
 BUILDING 3 - SIZE RANGE 854 - 1,915 SQ. FT. | 79.3 - 177.9 SQ. M.

# HARTLAND GREENS

## BUILDING 2 & 3 G+8 MID RISE



# 2 BEDROOM APARTMENT



## 2 BEDROOM APARTMENT – Ground Level to Level 8

BUILDING 2 - SIZE RANGE 1,164 - 1,818 SQ. FT. | 108.1 - 168.8 SQ. M.  
 BUILDING 3 - SIZE RANGE 1,295 - 2,064 SQ. FT. | 120.3 - 191.7 SQ. M.

Disclaimer: 1. All dimensions are in metric, measured to wall finishes. 2. All materials, dimensions & drawings are approximate. 3. Information is subject to change without notice, at developer's absolute discretion. 4. Actual area may vary from the stated area. 5. Drawings are not to scale. 6. All images used are for illustrative purposes only and do not represent the actual size, features, specifications, fittings and furnishings. 7. The developer reserves the right to make revisions/alterations, at its absolute discretion, without any liability whatsoever.

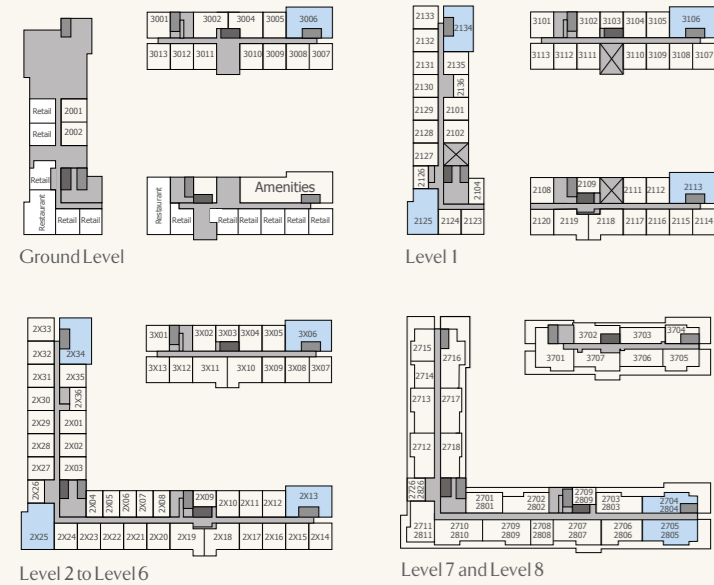
Disclaimer: 1. All dimensions are in metric, measured to wall finishes. 2. All materials, dimensions & drawings are approximate. 3. Information is subject to change without notice, at developer's absolute discretion. 4. Actual area may vary from the stated area. 5. Drawings are not to scale. 6. All images used are for illustrative purposes only and do not represent the actual size, features, specifications, fittings and furnishings. 7. The developer reserves the right to make revisions/alterations, at its absolute discretion, without any liability whatsoever.



HARTLAND GREENS

3 BEDROOM APARTMENT

BUILDING 2 & 3  
G+8 MID RISE



3 BEDROOM APARTMENT – Ground Level to Level 8

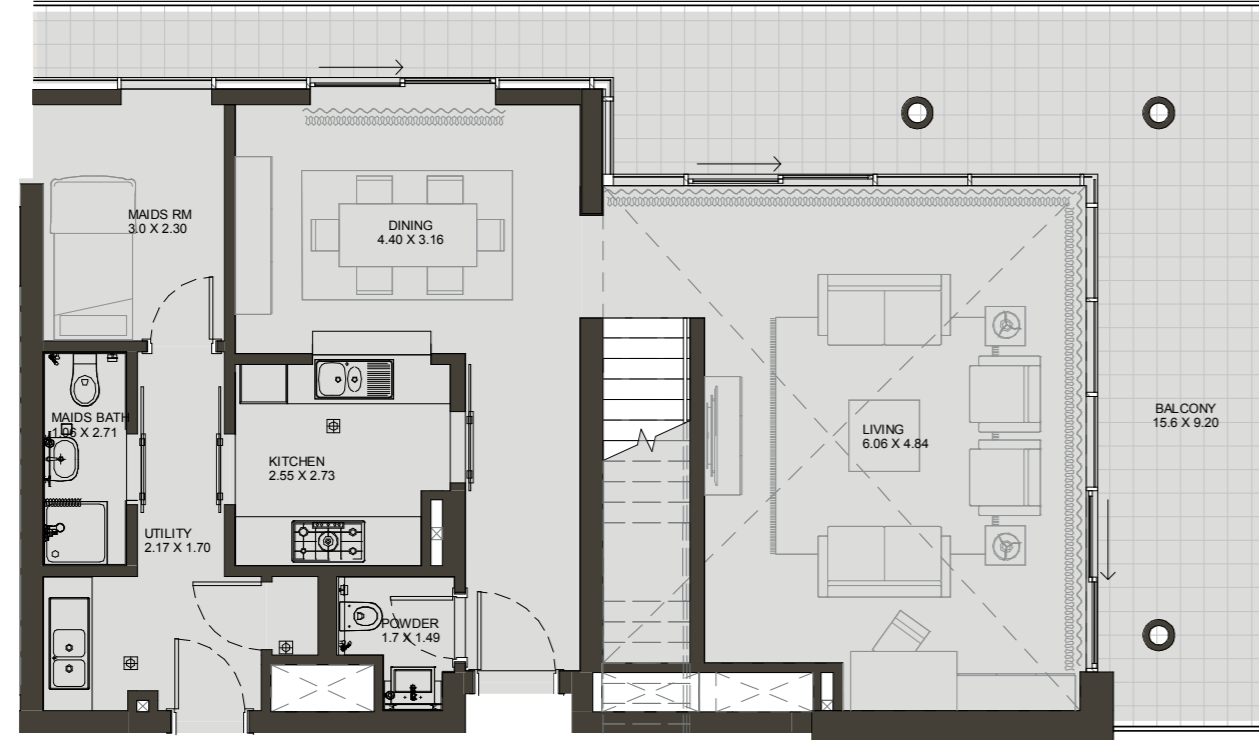
BUILDING 2 - SIZE RANGE 1,472 - 2,516 SQ. FT. | 136.7 - 233.7 SQ. M

BUILDING 3 - SIZE RANGE 1,878 - 3,390 SQ. FT. | 174.4 - 314.9 SQ. M



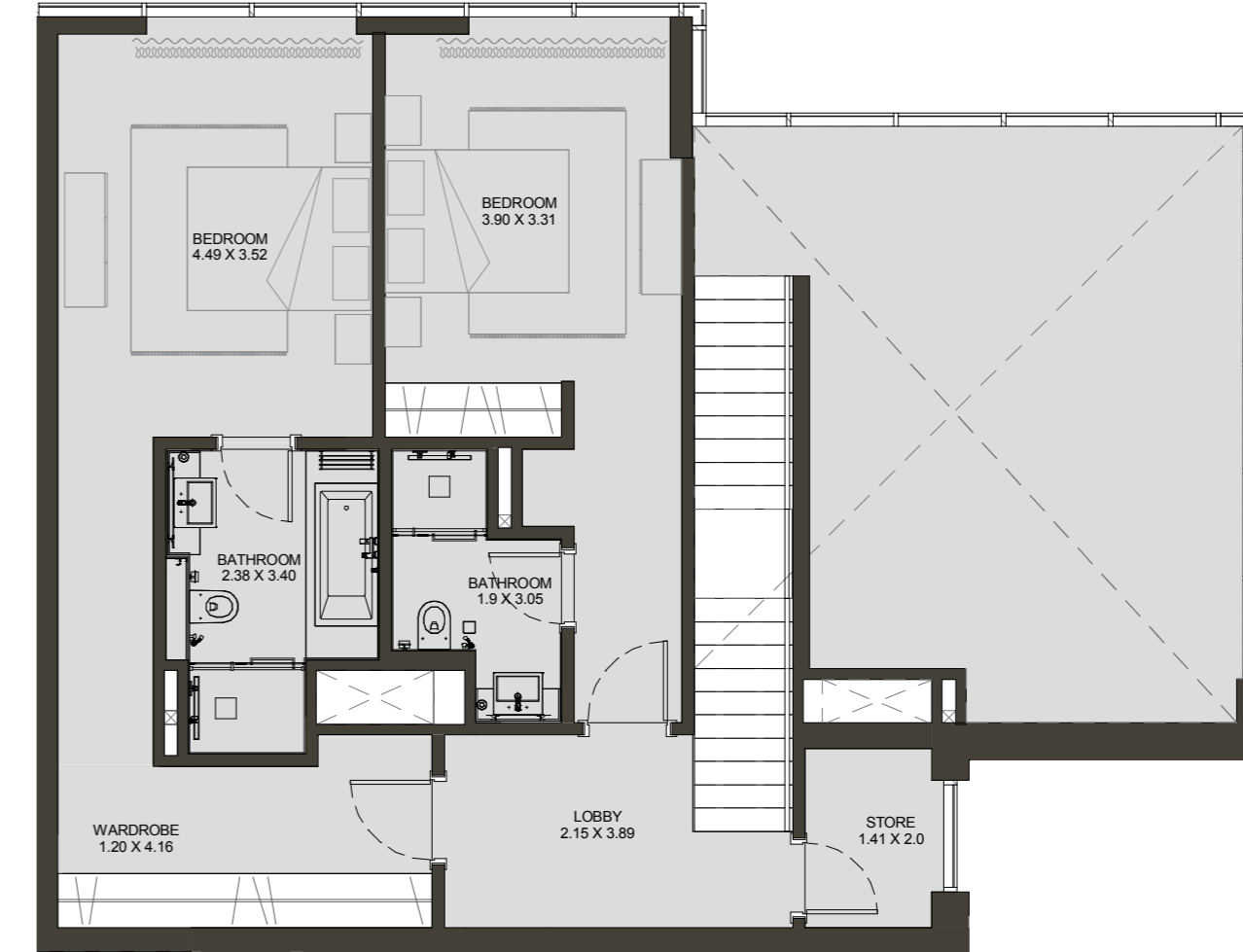


HARTLAND GREENS  
2 BEDROOM DUPLEX



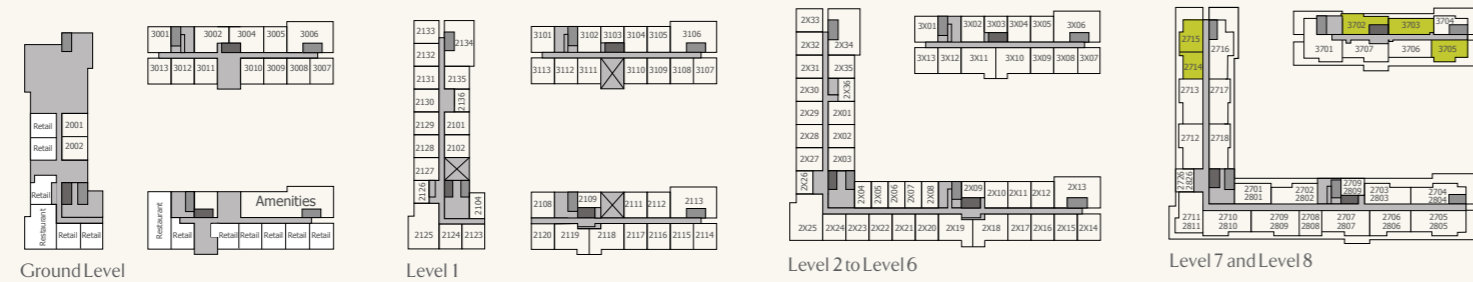
Level 7  
Lower Floor

HARTLAND GREENS  
2 BEDROOM DUPLEX



Level 8  
Upper Floor

BUILDING 2 & 3  
G+8 MID RISE

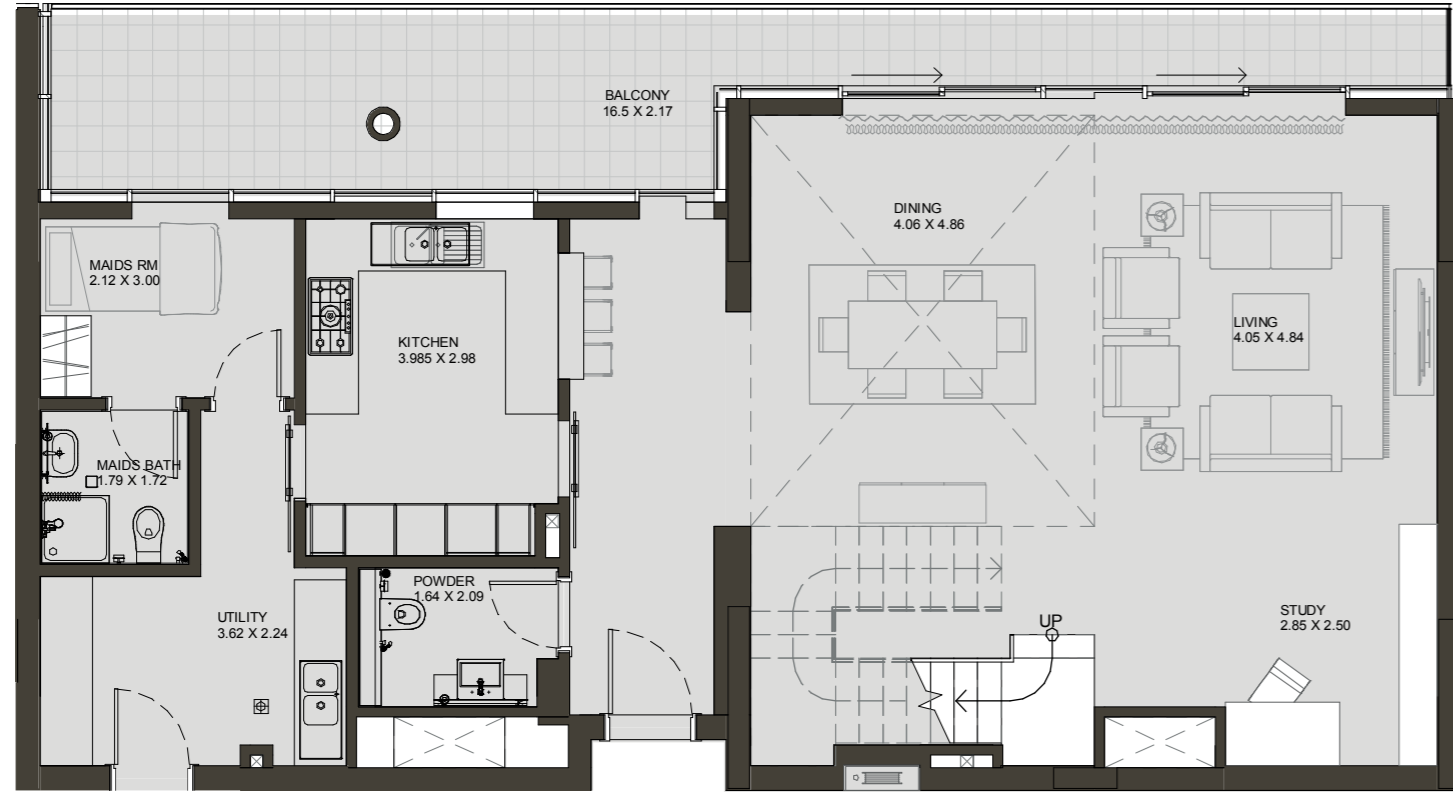


2 BEDROOM DUPLEX – Ground Level to Level 8

BUILDING 2 - SIZE RANGE 1,863 - 2,339 SQ. FT. | 173.0 - 217.3 SQ. M.  
BUILDING 3 - SIZE RANGE 2,008 - 2,612 SQ. FT. | 186.5 - 242.6 SQ. M.

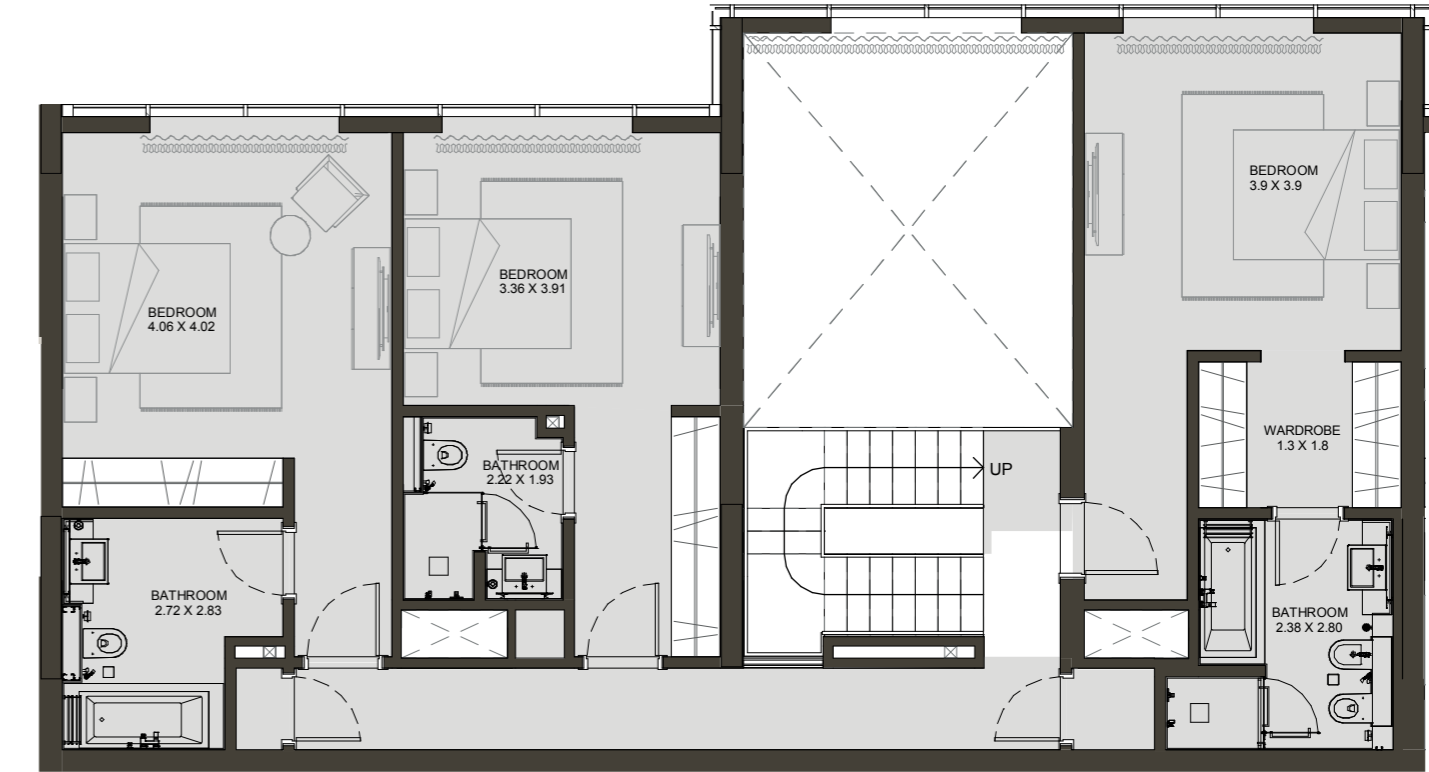
Disclaimer: 1. All dimensions are in metric, measured to wall finishes. 2. All materials, dimensions & drawings are approximate. 3. Information is subject to change without notice, at developer's absolute discretion. 4. Actual area may vary from the stated area. 5. Drawings are not to scale. 6. All images used are for illustrative purposes only and do not represent the actual size, features, specifications, fittings and furnishings. 7. The developer reserves the right to make revisions/ alterations, at its absolute discretion, without any liability whatsoever.

HARTLAND GREENS  
3 BEDROOM DUPLEX



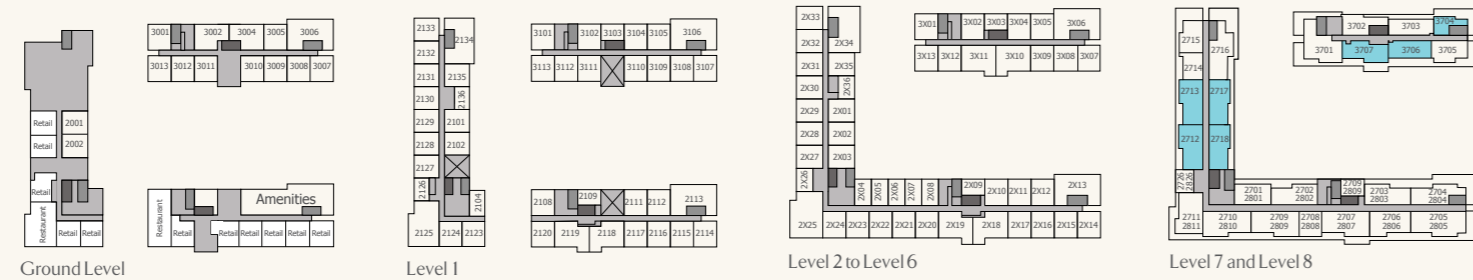
Level 7  
Lower Floor

HARTLAND GREENS  
3 BEDROOM DUPLEX



Level 8  
Upper Floor

BUILDING 2 & 3  
G+8 MID RISE



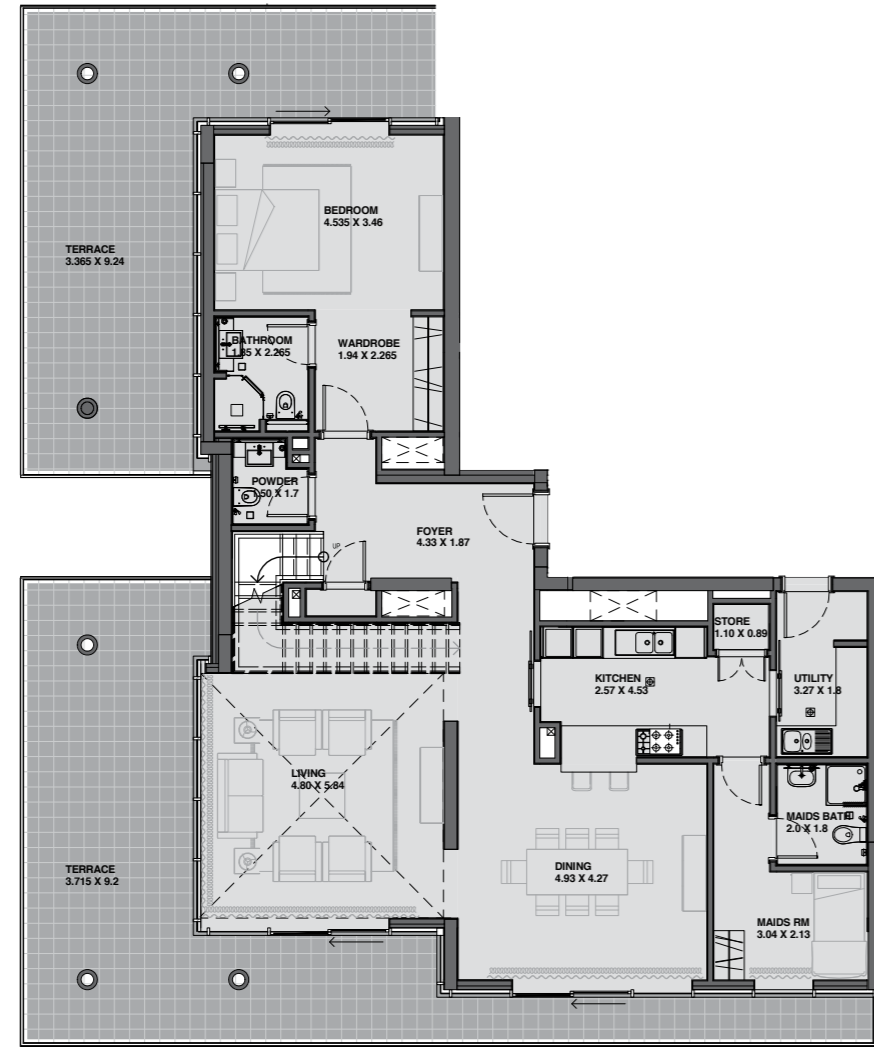
3 BEDROOM DUPLEX – Ground Level to Level 8

BUILDING 2 - SIZE RANGE 2,663 - 2,874 SQ. FT. | 247.4 - 267.0 SQ. M.  
BUILDING 3 - SIZE RANGE 2,975 - 3,050 SQ. FT. | 276.3 - 283.3 SQ. M.

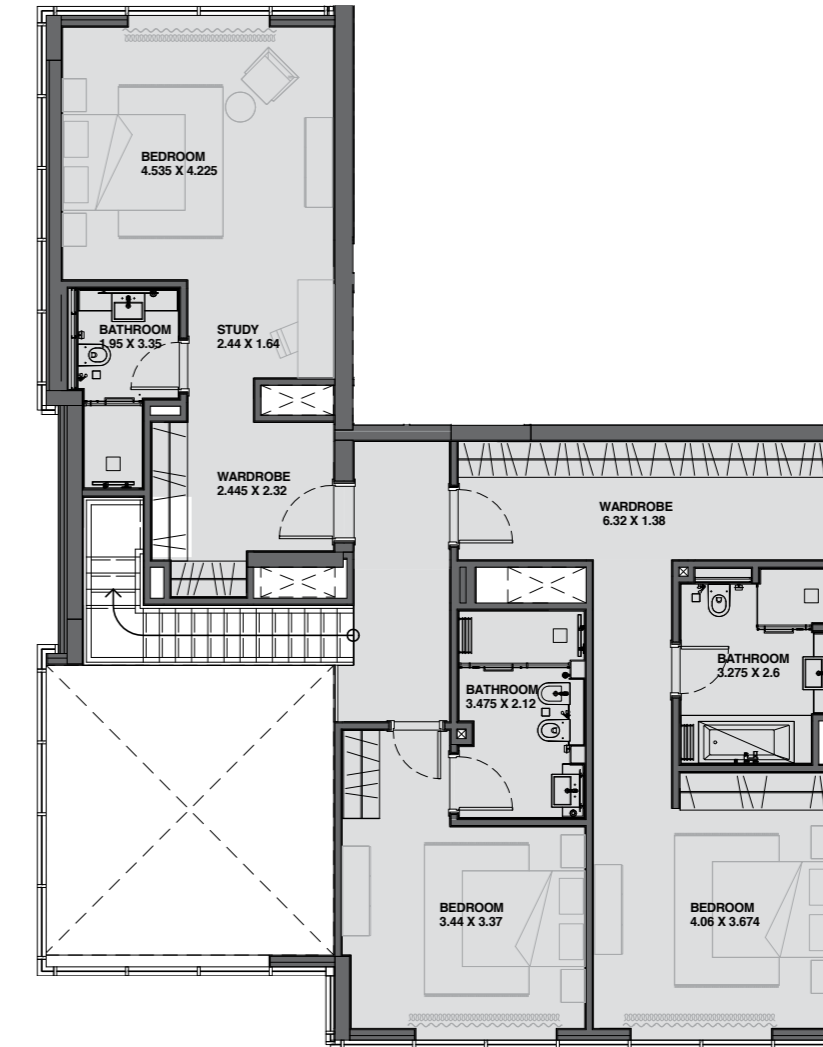
Disclaimer: 1. All dimensions are in metric, measured to wall finishes. 2. All materials, dimensions & drawings are approximate. 3. Information is subject to change without notice, at developer's absolute discretion. 4. Actual area may vary from the stated area. 5. Drawings are not to scale. 6. All images used are for illustrative purposes only and do not represent the actual size, features, specifications, fittings and furnishings. 7. The developer reserves the right to make revisions/ alterations, at its absolute discretion, without any liability whatsoever.



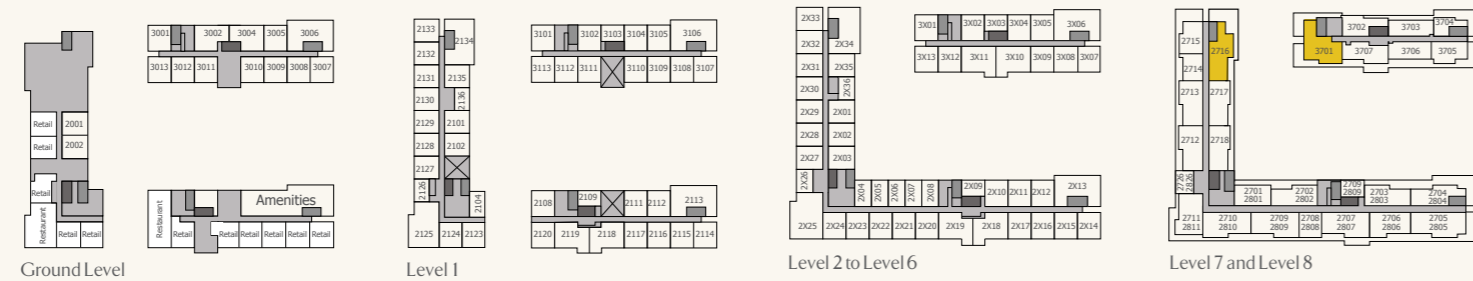
HARTLAND GREENS  
4 BEDROOM DUPLEX



HARTLAND GREENS  
4 BEDROOM DUPLEX



BUILDING 2 & 3  
G+8 MID RISE



4 BEDROOM DUPLEX – Ground Level to Level 8

BUILDING 2 - SIZE 3,764 SQ. FT. | 349.6 SQ. M.  
 BUILDING 3 - SIZE 3,876 SQ. FT. | 360.0 SQ. M.

Disclaimer: 1. All dimensions are in metric, measured to wall finishes. 2. All materials, dimensions & drawings are approximate. 3. Information is subject to change without notice, at developer's absolute discretion. 4. Actual area may vary from the stated area. 5. Drawings are not to scale. 6. All images used are for illustrative purposes only and do not represent the actual size, features, specifications, fittings and furnishings. 7. The developer reserves the right to make revisions/ alterations, at its absolute discretion, without any liability whatsoever.



## CONTACT US

**Toll Free : 800 37373**

**Hotline : +971 52 754 3244**

**Email : [sales@drehomes.com](mailto:sales@drehomes.com)**

**Visit Us For More Info:-**


**<https://drehomes.com/property/sobha-hartland-greens-mbr-city/>**

**SOBHA HARTLAND  
SALES GALLERY**

Sobha Hartland  
Mohammed Bin Rashid City  
Dubai  
United Arab Emirates

**SOBHA  
BRAND STUDIO**

Umm Al Sheif  
Sheikh Zayed Road  
Dubai  
United Arab Emirates

800 999 999  
[sobharealty.com](http://sobharealty.com)  
 @sobharealty



**SOBHA HARTLAND**