

# دبي كريك رزیدنسز DUBAI CREEK RESIDENCES

دبي كريك هاربر  
DUBAI CREEK HARBOUR

البحيرات  
THE LAGOONS

DUBAI  
HOLDING





# دبي كريك رزیدنسز

## DUBAI CREEK RESIDENCES

دبي كريك هاربر  
DUBAI CREEK HARBOUR

الخيران  
THE LAGOONS

DUBAI  
HOLDING



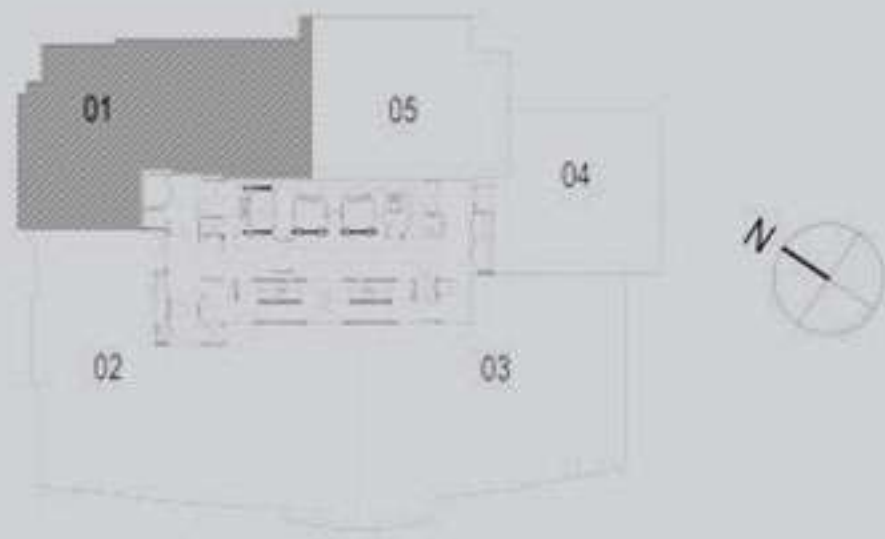
NORTH T1

2 BEDROOMS  
WITH TERRACE

UNIT 01

LEVELS 4-5, 7-15,  
17-25 AND 27-34

|              | Sq.m   | Sq.ft    |
|--------------|--------|----------|
| Suite Area   | 127.70 | 1,374.55 |
| Terrace Area | 8.15   | 87.73    |
| Total Area   | 135.85 | 1,462.28 |



Disclaimer: 1. All room dimensions are measured to structural elements and exclude wall finishes and construction tolerances. 2. All dimensions have been provided by our consultant architects. 3. All materials, dimensions & drawings are approximate. Information is subject to change without notice. 4. Actual suite area may vary from the stated area. Drawings not to scale. The developer reserves the right to make revisions. 5. Calculation of suite area is measured as the area bounded by the centre line of demising or partition walls separating one unit from another unit, the exterior face of all exterior walls, and the exterior face of the corridor wall enclosing the adjoining unit. 6. Calculation of balcony area is measured as the area bounded by the centre line of demising or partition walls separating one unit from another unit, the outmost face of the enclosing guard and the external face of the unit adjoining the balcony. 7. The units are measured at typical floor in the building. Columns may vary in size depending on the floor level. 8. Areas have been calculated in accordance with Dubai Land Department method of measurement as at October 2014.



# دبي كريك رزیدنسز

## DUBAI CREEK RESIDENCES

دبي  
DUBAI CREEK HARBOUR

الخيران  
THE LAGOONS

DUBAI  
HOLDING



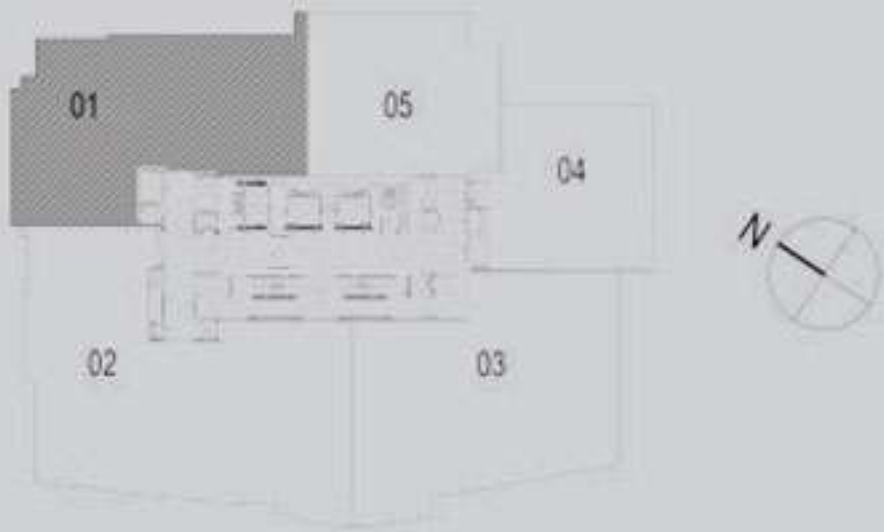
NORTH T1

2 BEDROOMS  
WITH TERRACE

UNIT 01

LEVELS 6 AND 26

|              | Sq.m   | Sq.ft    |
|--------------|--------|----------|
| Suite Area   | 124.12 | 1,336.02 |
| Terrace Area | 8.15   | 87.73    |
| Total Area   | 132.27 | 1,423.74 |



Disclaimer: 1. All room dimensions are measured to structural elements and exclude wall finishes and construction tolerances. 2. All dimensions have been provided by our consultant architects. 3. All materials, dimensions & drawings are approximate. Information is subject to change without notice. 4. Actual suite area may vary from the stated area. Drawings not to scale. The developer reserves the right to make revisions. 5. Calculation of suite area is measured as the area bounded by the centre line of demising or partition walls separating one unit from another unit, the exterior face of all exterior walls, and the exterior face of the corridor wall enclosing the adjoining unit. 6. Calculation of balcony area is measured as the area bounded by the centre line of demising or partition walls separating one unit from another unit, the outmost face of the enclosing guard and the external face of the unit adjoining the balcony. 7. The units are measured at typical floor in the building. Columns may vary in size depending on the floor level. 8. Areas have been calculated in accordance with Dubai Land Department method of measurement as at October 2014.





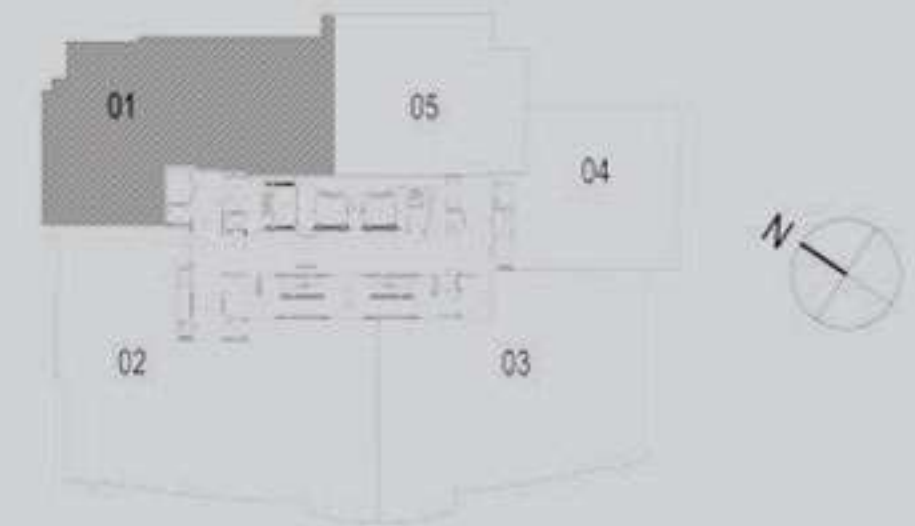
NORTH T1

2 BEDROOMS  
WITH TERRACE

UNIT 01

LEVELS 35 AND 37

|              | Sq.m   | Sq.ft    |
|--------------|--------|----------|
| Suite Area   | 128.22 | 1,380.15 |
| Terrace Area | 8.15   | 87.73    |
| Total Area   | 136.37 | 1,467.87 |

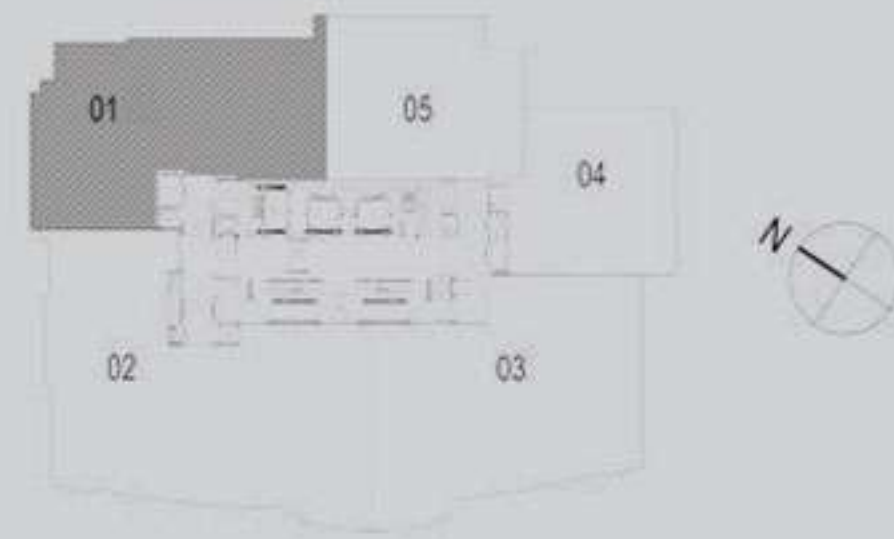






NORTH T1  
2 BEDROOMS  
WITH TERRACE  
UNIT 01  
LEVELS 36

|              | Sq.m   | Sq.ft    |
|--------------|--------|----------|
| Suite Area   | 124.64 | 1,341.61 |
| Terrace Area | 8.15   | 87.73    |
| Total Area   | 132.79 | 1,429.34 |





# دبي كريك رزیدنسز

## DUBAI CREEK RESIDENCES

دبي كريك هاربر  
DUBAI CREEK HARBOUR

الخيران  
THE LAGOONS

DUBAI  
HOLDING



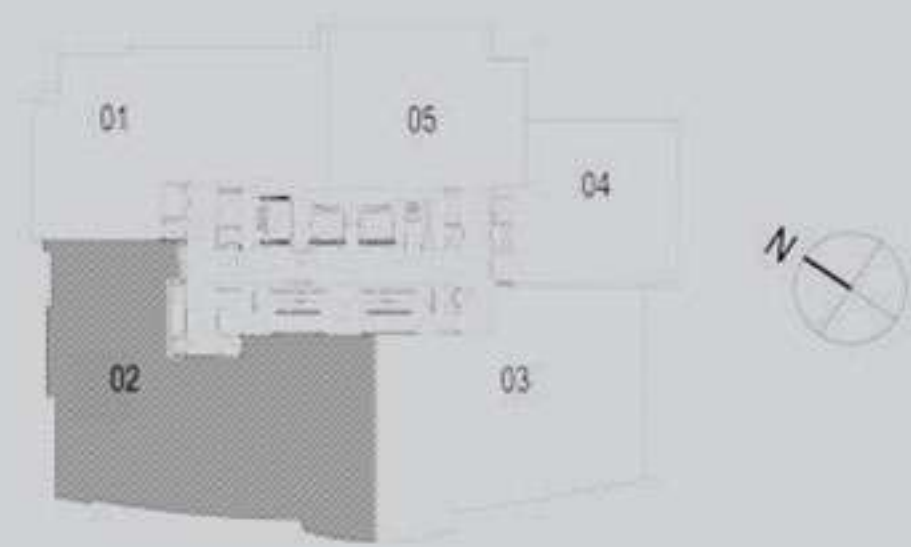
NORTH T1

3 BEDROOMS  
WITH TERRACE

UNIT 02

LEVELS 3-15  
AND 17-34

|              | Sq.m   | Sq.ft    |
|--------------|--------|----------|
| Suite Area   | 182.49 | 1,964.31 |
| Terrace Area | 17.58  | 189.23   |
| Total Area   | 200.07 | 2,153.54 |



Disclaimer: 1. All room dimensions are measured to structural elements and exclude wall finishes and construction tolerances. 2. All dimensions have been provided by our consultant architects. 3. All materials, dimensions & drawings are approximate. Information is subject to change without notice. 4. Actual suite area may vary from the stated area. Drawings not to scale. The developer reserves the right to make revisions. 5. Calculation of suite area is measured as the area bounded by the centre line of demising or partition walls separating one unit from another unit, the exterior face of all exterior walls, and the exterior face of the corridor wall enclosing the adjoining unit. 6. Calculation of balcony area is measured as the area bounded by the centre line of demising or partition walls separating one unit from another unit, the outmost face of the enclosing guard and the external face of the unit adjoining the balcony. 7. The units are measured at typical floor in the building. Columns may vary in size depending on the floor level. 8. Areas have been calculated in accordance with Dubai Land Department method of measurement as at October 2014.





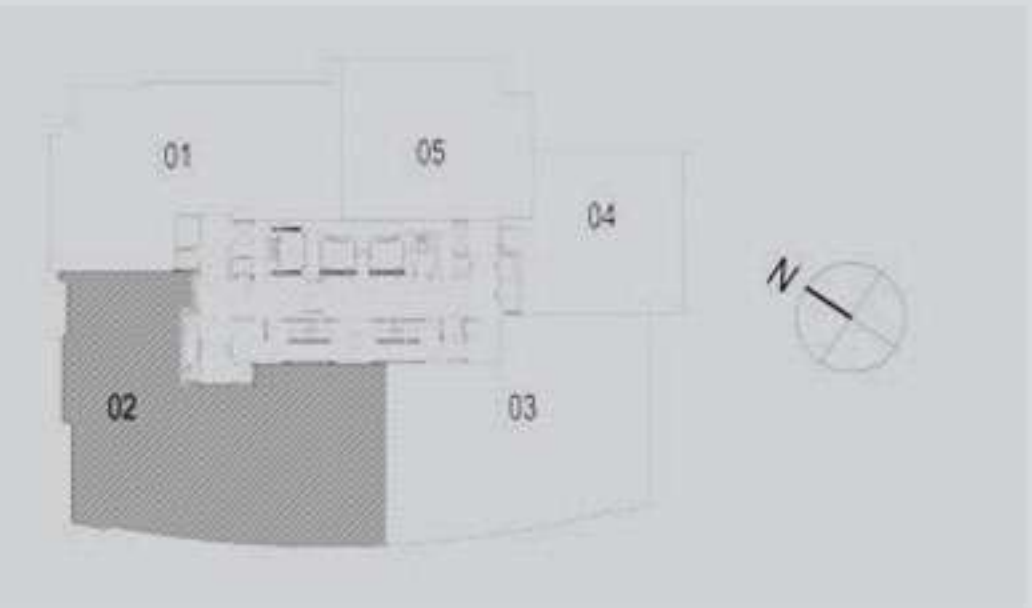
NORTH T1

3 BEDROOMS  
WITH TERRACE

UNIT 02

LEVELS 35-37

|              | Sq.m   | Sq.ft    |
|--------------|--------|----------|
| Suite Area   | 184.56 | 1,986.59 |
| Terrace Area | 15.73  | 169.32   |
| Total Area   | 200.29 | 2,155.90 |





# دبي كريك رزیدنسز

## DUBAI CREEK RESIDENCES

فـور دبي  
DUBAI CREEK HARBOUR

الخيران  
THE LAGOONS

DUBAI  
HOLDING



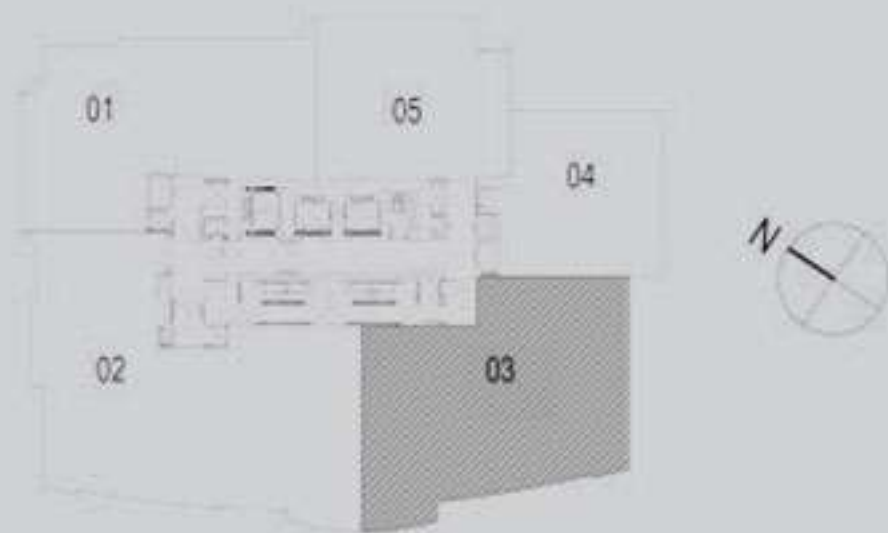
NORTH T1

2 BEDROOMS  
WITH TERRACE

UNIT 03

LEVELS 3-15  
AND 17-34

|              | Sq.m   | Sq.ft    |
|--------------|--------|----------|
| Suite Area   | 139.44 | 1,500.92 |
| Terrace Area | 12.52  | 134.76   |
| Total Area   | 151.96 | 1,635.68 |



Disclaimer: 1. All room dimensions are measured to structural elements and exclude wall finishes and construction tolerances. 2. All dimensions have been provided by our consultant architects. 3. All materials, dimensions & drawings are approximate. Information is subject to change without notice. 4. Actual suite area may vary from the stated area. Drawings not to scale. The developer reserves the right to make revisions. 5. Calculation of suite area is measured as the area bounded by the centre line of demising or partition walls separating one unit from another unit, the exterior face of all exterior walls, and the exterior face of the corridor wall enclosing the adjoining unit. 6. Calculation of balcony area is measured as the area bounded by the centre line of demising or partition walls separating one unit from another unit, the outmost face of the enclosing guard and the external face of the unit adjoining the balcony. 7. The units are measured at typical floor in the building. Columns may vary in size depending on the floor level. 8. Areas have been calculated in accordance with Dubai Land Department method of measurement as at October 2014.

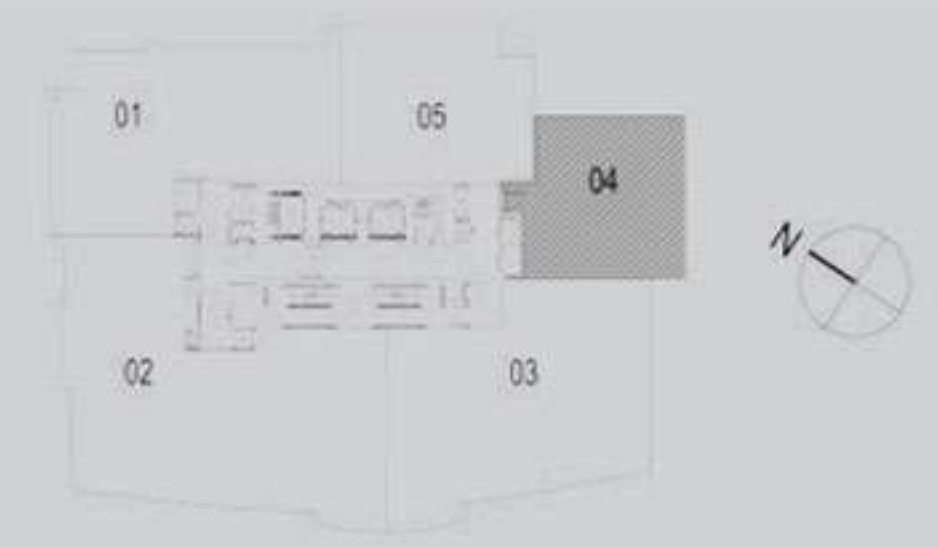




NORTH T1  
1 BEDROOM  
WITH TERRACE

UNIT 04  
LEVELS 3-15  
AND 17-37

|              | Sq.m  | Sq.ft  |
|--------------|-------|--------|
| Suite Area   | 74.94 | 806.65 |
| Terrace Area | 6.87  | 73.95  |
| Total Area   | 81.81 | 880.60 |





# دبي كريك رزیدنسز

## DUBAI CREEK RESIDENCES

دبي كريك هاربر  
DUBAI CREEK HARBOUR

الخيران  
THE LAGOONS

DUBAI  
HOLDING



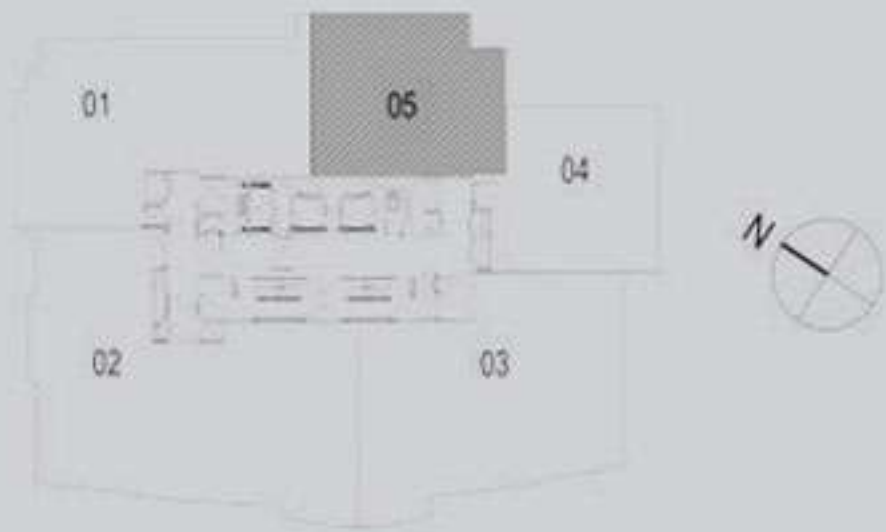
NORTH T1

1 BEDROOM  
WITH TERRACE

UNIT 05

LEVELS 4-15  
AND 17-37

|              | Sq.m  | Sq.ft  |
|--------------|-------|--------|
| Suite Area   | 83.52 | 899.00 |
| Terrace Area | 8.07  | 86.86  |
| Total Area   | 91.59 | 985.87 |



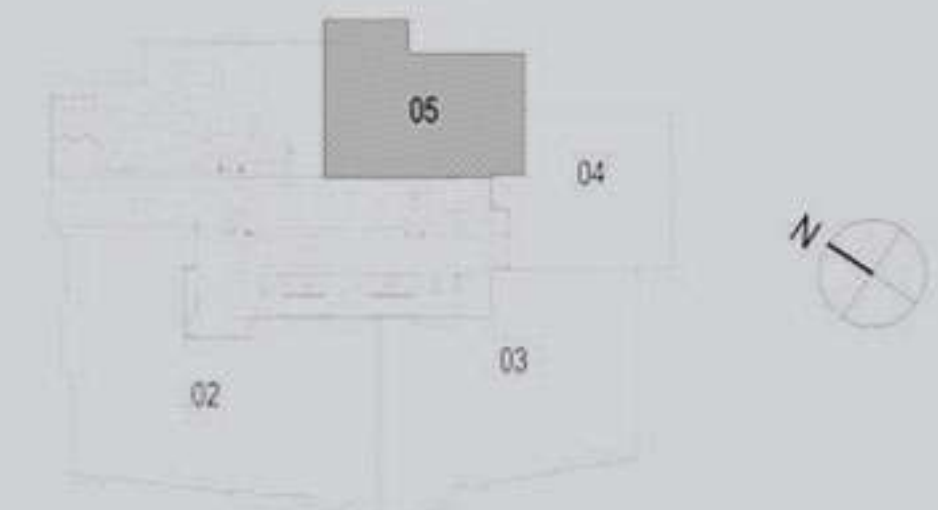
Disclaimer: 1. All room dimensions are measured to structural elements and exclude wall finishes and construction tolerances. 2. All dimensions have been provided by our consultant architects. 3. All materials, dimensions & drawings are approximate. Information is subject to change without notice. 4. Actual suite area may vary from the stated area. Drawings not to scale. The developer reserves the right to make revisions. 5. Calculation of suite area is measured as the area bounded by the centre line of demising or partition walls separating one unit from another unit, the exterior face of all exterior walls, and the exterior face of the corridor wall enclosing the adjoining unit. 6. Calculation of balcony area is measured as the area bounded by the centre line of demising or partition walls separating one unit from another unit, the outmost face of the enclosing guard and the external face of the unit adjoining the balcony. 7. The units are measured at typical floor in the building. Columns may vary in size depending on the floor level. 8. Areas have been calculated in accordance with Dubai Land Department method of measurement as at October 2014.





NORTH T1  
1 BEDROOM  
WITH TERRACE  
UNIT 05  
LEVEL 3

|              | Sq.m   | Sq.ft    |
|--------------|--------|----------|
| Suite Area   | 83.52  | 899.00   |
| Terrace Area | 49.55  | 533.35   |
| Total Area   | 133.07 | 1,432.35 |





# دبي كريك رزیدنسز

## DUBAI CREEK RESIDENCES

دبي  
DUBAI CREEK HARBOUR

الخيران  
THE LAGOONS

DUBAI  
HOLDING



NORTH T<sub>2</sub>

1 BEDROOM  
WITH TERRACE

UNIT 04

LEVELS 3-15  
AND 17-32

|              | Sq.m  | Sq.ft    |
|--------------|-------|----------|
| Suite Area   | 85.51 | 920.42   |
| Terrace Area | 9.83  | 105.81   |
| Total Area   | 95.34 | 1,026.23 |





# دبي كريك رزиденسز DUBAI CREEK RESIDENCES

NORTH T<sub>2</sub>

2 BEDROOMS  
WITH TERRACE

UNIT 05

LEVEL 3



|              | Sq.m   | Sq.ft    |
|--------------|--------|----------|
| Suite Area   | 117.11 | 1,260.56 |
| Terrace Area | 44.65  | 480.61   |
| Total Area   | 161.76 | 1,741.17 |





# دبي كريك رزیدنسز

## DUBAI CREEK RESIDENCES

دبي كريك هاربر  
DUBAI CREEK HARBOUR

الخيران  
THE LAGOONS

DUBAI  
HOLDING



NORTH T2

2 BEDROOMS  
WITH TERRACE

UNIT 05

LEVELS 4-15  
AND 17-32

|              | Sq.m   | Sq.ft    |
|--------------|--------|----------|
| Suite Area   | 117.11 | 1,260.56 |
| Terrace Area | 9.65   | 103.87   |
| Total Area   | 126.76 | 1,364.43 |





# دبي كريك رزیدنسز

## DUBAI CREEK RESIDENCES

دبي كريك هاربر  
DUBAI CREEK HARBOUR

الخيران  
THE LAGOONS

DUBAI  
HOLDING



NORTH T2

1 BEDROOM  
WITH TERRACE

UNIT 03

LEVEL 3

|              | Sq.m   | Sq.ft    |
|--------------|--------|----------|
| Suite Area   | 101.87 | 1,096.52 |
| Terrace Area | 54.66  | 588.36   |
| Total Area   | 156.53 | 1,684.87 |





# دبي كريك رزیدنسز

## DUBAI CREEK RESIDENCES

دبي كريك هاربر  
DUBAI CREEK HARBOUR

الخيران  
THE LAGOONS

DUBAI  
HOLDING



NORTH T2

1 BEDROOM  
WITH TERRACE

UNIT 03

LEVELS 4-15  
AND 17-32

|              | Sq.m   | Sq.ft    |
|--------------|--------|----------|
| Suite Area   | 101.87 | 1,096.52 |
| Terrace Area | 6.66   | 71.69    |
| Total Area   | 108.53 | 1,168.21 |





# دبي كريك رزиденسز DUBAI CREEK RESIDENCES

NORTH T2

2 BEDROOMS  
WITH TERRACE

UNIT 02

LEVEL 3

|              | Sq.m   | Sq.ft    |
|--------------|--------|----------|
| Suite Area   | 134.90 | 1,452.05 |
| Terrace Area | 112.47 | 1,210.62 |
| Total Area   | 247.37 | 2,662.67 |





# دبي كريك رزиденسز DUBAI CREEK RESIDENCES

دبي  
DUBAI CREEK HARBOUR

الخيران  
THE LAGOONS

DUBAI  
HOLDING



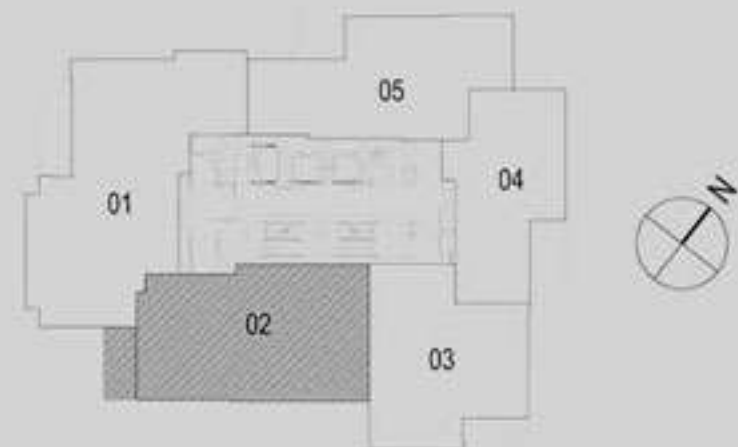
NORTH T2

2 BEDROOMS  
WITH TERRACE

UNIT 02

LEVELS 4-15  
AND 17-32

|              | Sq.m   | Sq.ft    |
|--------------|--------|----------|
| Suite Area   | 134.90 | 1,452.05 |
| Terrace Area | 10.68  | 114.96   |
| Total Area   | 145.58 | 1,567.01 |





# دبي كريك رزиденسز

## DUBAI CREEK RESIDENCES

دبي  
DUBAI CREEK HARBOUR

الخيران  
THE LAGOONS

DUBAI  
HOLDING



NORTH T<sub>2</sub>

3 BEDROOMS  
WITH TERRACE

UNIT 01

LEVELS 6  
AND 26

|              | Sq.m   | Sq.ft    |
|--------------|--------|----------|
| Suite Area   | 167.23 | 1,800.05 |
| Terrace Area | 8.93   | 96.12    |
| Total Area   | 176.16 | 1,896.17 |



3 BEDROOMS WITH TERRACE



# دبي كريك رزیدنسز DUBAI CREEK RESIDENCES

دبي  
DUBAI CREEK HARBOUR

الخيران  
THE LAGOONS

DUBAI  
HOLDING



NORTH T<sub>2</sub>

2 BEDROOMS  
WITH TERRACE

UNIT 01

LEVEL 3

|              | Sq.m   | Sq.ft    |
|--------------|--------|----------|
| Suite Area   | 143.47 | 1,544.30 |
| Terrace Area | 113.41 | 1,220.74 |
| Total Area   | 256.88 | 2,765.03 |





# دبي كريك رزیدنسز

## DUBAI CREEK RESIDENCES

دبي  
DUBAI CREEK HARBOUR

الخيران  
THE LAGOONS

DUBAI  
HOLDING



NORTH T2

3 BEDROOMS  
WITH TERRACE

UNIT 01

LEVELS 4-5, 7-15, 17-25  
AND 27-32

|              | Sq.m   | Sq.ft    |
|--------------|--------|----------|
| Suite Area   | 170.52 | 1,835.46 |
| Terrace Area | 8.92   | 96.01    |
| Total Area   | 179.44 | 1,931.48 |





# دبي كريك رزیدنسز

## DUBAI CREEK RESIDENCES

دبي  
DUBAI CREEK HARBOUR

الخيران  
THE LAGOONS

DUBAI  
HOLDING



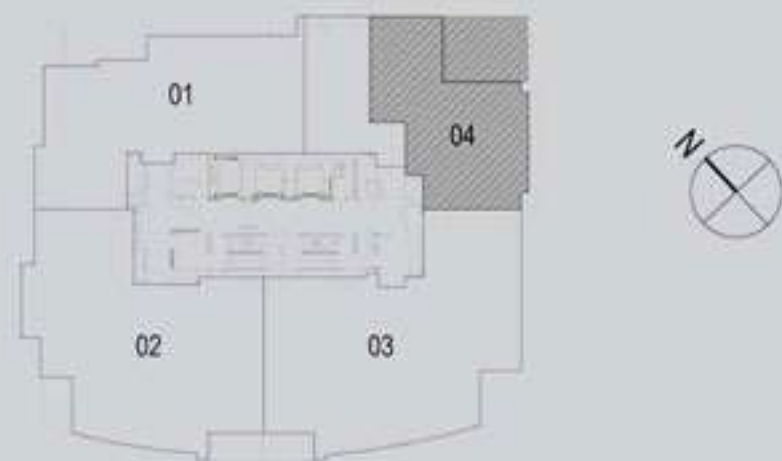
NORTH T<sub>3</sub>

1 BEDROOM  
WITH TERRACE

UNIT 04

LEVEL 3

|              | Sq.m   | Sq.ft    |
|--------------|--------|----------|
| Suite Area   | 90.34  | 972.41   |
| Terrace Area | 25.36  | 272.97   |
| Total Area   | 115.70 | 1,245.38 |





# دبي كريك رزیدنسز DUBAI CREEK RESIDENCES

دبي  
DUBAI CREEK HARBOUR

الخيران  
THE LAGOONS

DUBAI  
HOLDING



NORTH T3

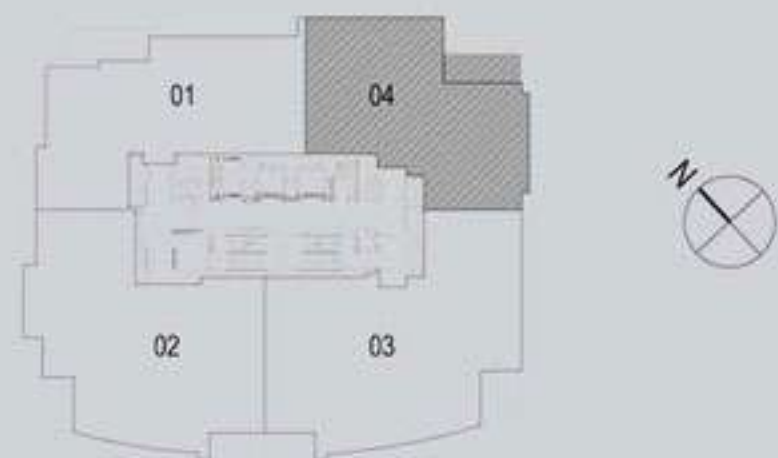
2 BEDROOMS  
WITH TERRACE

UNIT 04

LEVELS 4-15  
AND 17-27



|              | Sq.m   | Sq.ft    |
|--------------|--------|----------|
| Suite Area   | 137.61 | 1,481.22 |
| Terrace Area | 9.67   | 104.09   |
| Total Area   | 147.28 | 1,585.31 |





# دبي كريك رزیدنسز DUBAI CREEK RESIDENCES

دبي  
DUBAI CREEK HARBOUR

الخيران  
THE LAGOONS

DUBAI  
HOLDING



NORTH T<sub>3</sub>

3 BEDROOMS  
WITH TERRACE

UNIT 03

LEVELS 3-15  
AND 17-27

|              | Sq.m   | Sq.ft    |
|--------------|--------|----------|
| Suite Area   | 197.62 | 2,127.16 |
| Terrace Area | 16.57  | 178.36   |
| Total Area   | 214.19 | 2,305.52 |





# دبي كريك رزیدنسز

## DUBAI CREEK RESIDENCES

دبي كريك هاربر  
DUBAI CREEK HARBOUR

الخيران  
THE LAGOONS

DUBAI  
HOLDING



NORTH T<sub>3</sub>

3 BEDROOMS  
WITH TERRACE

UNIT 02

LEVELS 3-15  
AND 17-27

|              | Sq.m   | Sq.ft    |
|--------------|--------|----------|
| Suite Area   | 182.49 | 1,964.31 |
| Terrace Area | 14.72  | 158.44   |
| Total Area   | 197.21 | 2,122.75 |





# دبي كريك رزیدنسز

## DUBAI CREEK RESIDENCES

دبي  
DUBAI CREEK HARBOUR

الخيران  
THE LAGOONS

DUBAI  
HOLDING



NORTH T<sub>3</sub>

2 BEDROOMS  
WITH TERRACE

UNIT 01

LEVEL 3

|              | Sq.m   | Sq.ft    |
|--------------|--------|----------|
| Suite Area   | 143.38 | 1,543.33 |
| Terrace Area | 48.91  | 526.46   |
| Total Area   | 192.29 | 2,069.79 |





# دبي كريك رزیدنسز

## DUBAI CREEK RESIDENCES

دبي كريك هاربر  
DUBAI CREEK HARBOUR

الخيران  
THE LAGOONS

DUBAI  
HOLDING



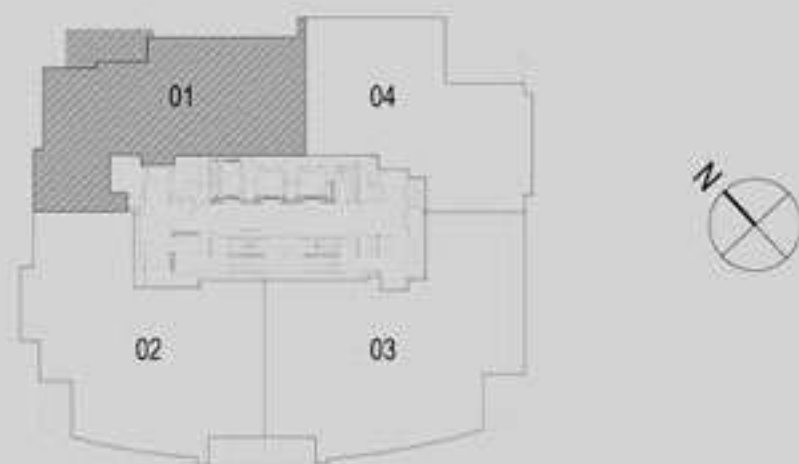
NORTH T<sub>3</sub>

2 BEDROOMS  
WITH TERRACE

UNIT 01

LEVELS 6-26

|              | Sq.m   | Sq.ft    |
|--------------|--------|----------|
| Suite Area   | 140.54 | 1,512.76 |
| Terrace Area | 12.36  | 133.04   |
| Total Area   | 152.90 | 1,645.80 |





# دبي كريك رزیدنسز DUBAI CREEK RESIDENCES

دبي  
DUBAI CREEK HARBOUR

الخيران  
THE LAGOONS

DUBAI  
HOLDING



NORTH T<sub>3</sub>

2 BEDROOMS  
WITH TERRACE

UNIT 01

LEVELS 4-15  
AND 17-27

|              | Sq.m   | Sq.ft    |
|--------------|--------|----------|
| Suite Area   | 143.38 | 1,543.33 |
| Terrace Area | 12.36  | 133.04   |
| Total Area   | 155.74 | 1,676.37 |





# دبي كريك رزیدنسز

## DUBAI CREEK RESIDENCES

دبي كريك هاربر  
DUBAI CREEK HARBOUR

الخيران  
THE LAGOONS

DUBAI  
HOLDING



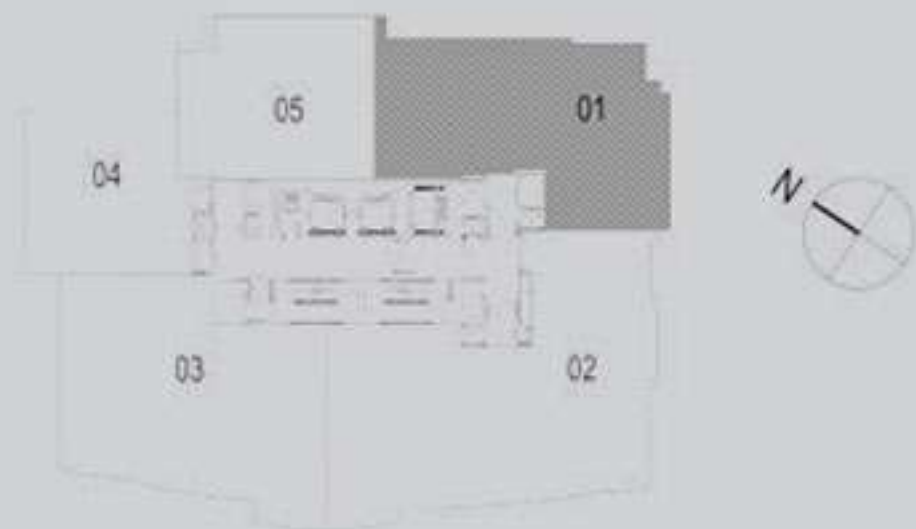
SOUTH T1

2 BEDROOMS  
WITH TERRACE

UNIT 01

LEVELS 4-5, 7-15,  
17-25 AND 27-34

|              | Sq.m   | Sq.ft    |
|--------------|--------|----------|
| Suite Area   | 127.70 | 1,374.55 |
| Terrace Area | 8.15   | 87.73    |
| Total Area   | 135.85 | 1,462.28 |



Disclaimer: 1. All room dimensions are measured to structural elements and exclude wall finishes and construction tolerances. 2. All dimensions have been provided by our consultant architects. 3. All materials, dimensions & drawings are approximate. Information is subject to change without notice. 4. Actual suite area may vary from the stated area. Drawings not to scale. The developer reserves the right to make revisions. 5. Calculation of suite area is measured as the area bounded by the centre line of demising or partition walls separating one unit from another unit, the exterior face of all exterior walls, and the exterior face of the corridor wall enclosing the adjoining unit. 6. Calculation of balcony area is measured as the area bounded by the centre line of demising or partition walls separating one unit from another unit, the outmost face of the enclosing guard and the external face of the unit adjoining the balcony. 7. The units are measured at typical floor in the building. Columns may vary in size depending on the floor level. 8. Areas have been calculated in accordance with Dubai Land Department method of measurement as at October 2014.



# دبي كريك رزیدنسز

## DUBAI CREEK RESIDENCES

دبي كريك هاربر  
DUBAI CREEK HARBOUR

الخيران  
THE LAGOONS

DUBAI  
HOLDING



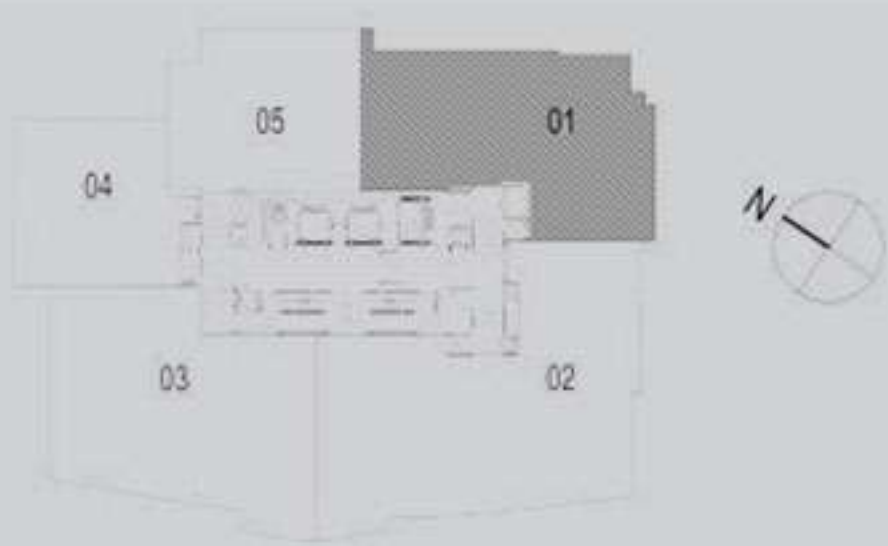
SOUTH T1

2 BEDROOMS  
WITH TERRACE

UNIT 01

LEVELS 6 AND 26

|              | Sq.m   | Sq.ft    |
|--------------|--------|----------|
| Suite Area   | 124.12 | 1,336.02 |
| Terrace Area | 8.15   | 87.73    |
| Total Area   | 132.27 | 1,423.74 |



Disclaimer: 1. All room dimensions are measured to structural elements and exclude wall finishes and construction tolerances. 2. All dimensions have been provided by our consultant architects. 3. All materials, dimensions & drawings are approximate. Information is subject to change without notice. 4. Actual suite area may vary from the stated area. Drawings not to scale. The developer reserves the right to make revisions. 5. Calculation of suite area is measured as the area bounded by the centre line of demising or partition walls separating one unit from another unit, the exterior face of all exterior walls, and the exterior face of the corridor wall enclosing the adjoining unit. 6. Calculation of balcony area is measured as the area bounded by the centre line of demising or partition walls separating one unit from another unit, the outmost face of the enclosing guard and the external face of the unit adjoining the balcony. 7. The units are measured at typical floor in the building. Columns may vary in size depending on the floor level. 8. Areas have been calculated in accordance with Dubai Land Department method of measurement as at October 2014.





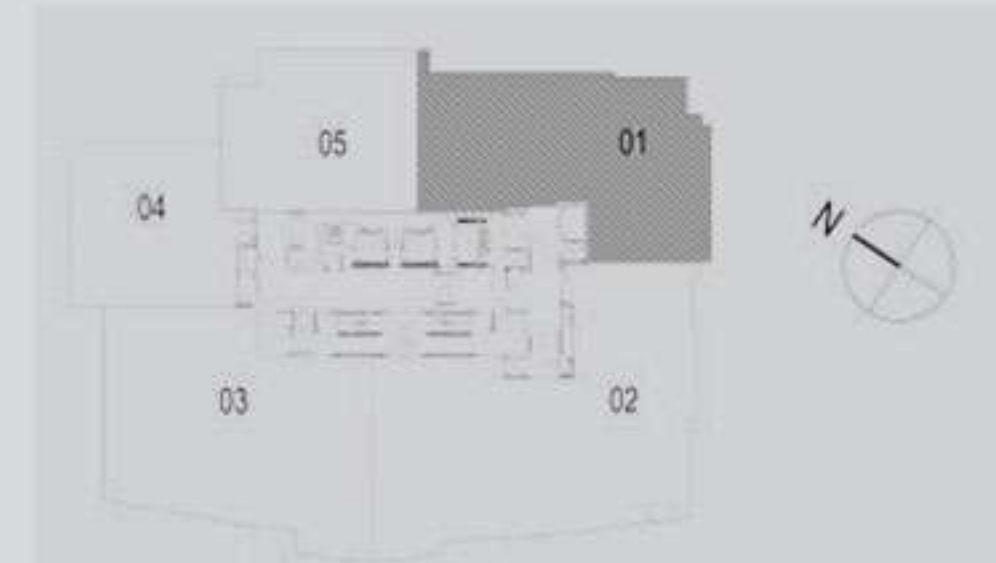
SOUTH T1

2 BEDROOMS  
WITH TERRACE

UNIT 01

LEVELS 35 AND 37

|              | Sq.m   | Sq.ft    |
|--------------|--------|----------|
| Suite Area   | 128.22 | 1,380.15 |
| Terrace Area | 8.15   | 87.73    |
| Total Area   | 136.37 | 1,467.87 |







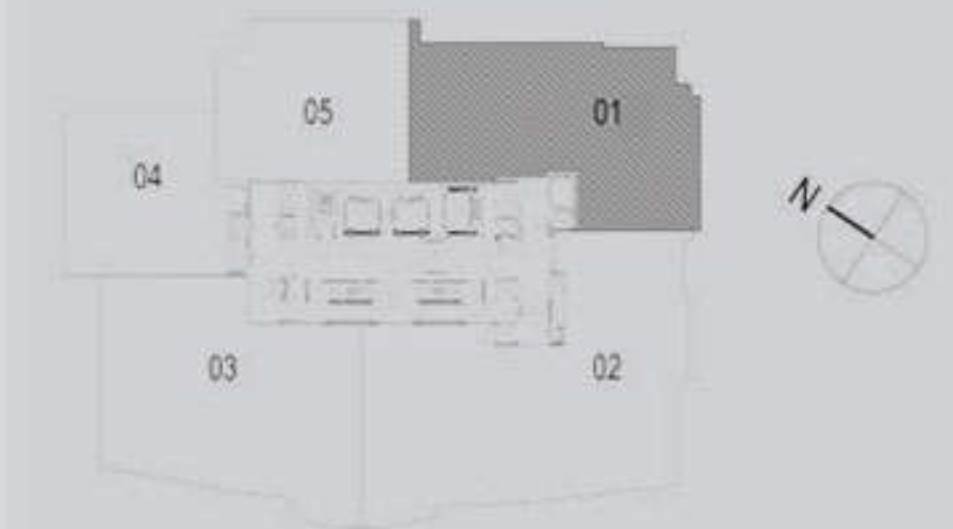
SOUTH TOWER

2 BEDROOMS  
WITH TERRACE

UNIT 01

LEVELS 36

|              | Sq.m   | Sq.ft    |
|--------------|--------|----------|
| Suite Area   | 124.64 | 1,341.61 |
| Terrace Area | 8.15   | 87.73    |
| Total Area   | 132.79 | 1,429.34 |





# دبي كريك رزیدنسز

## DUBAI CREEK RESIDENCES

دبي كريك هاربر  
DUBAI CREEK HARBOUR

الخيران  
THE LAGOONS

DUBAI  
HOLDING



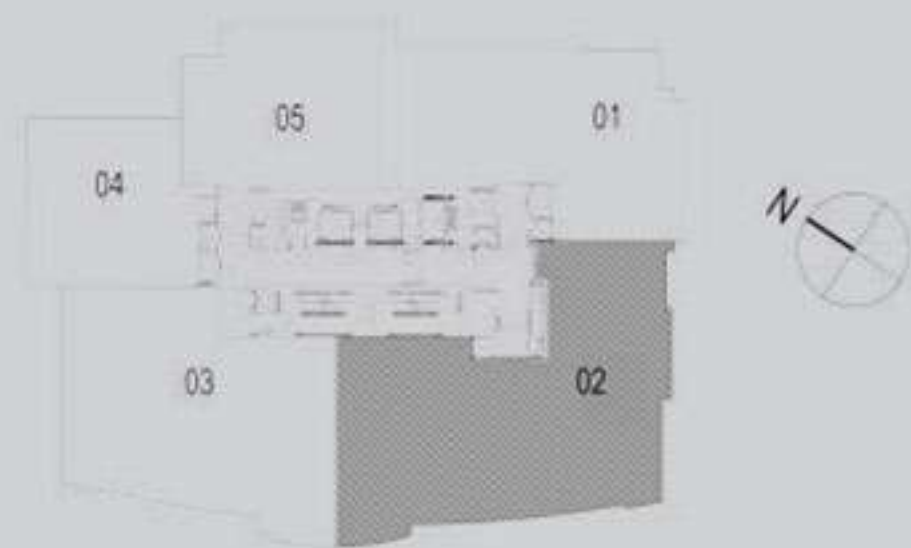
SOUTH T1

3 BEDROOMS  
WITH TERRACE

UNIT 02

LEVELS 3-15  
AND 17-34

|              | Sq.m   | Sq.ft    |
|--------------|--------|----------|
| Suite Area   | 182.49 | 1,964.31 |
| Terrace Area | 17.58  | 189.23   |
| Total Area   | 200.07 | 2,153.54 |



Disclaimer: 1. All room dimensions are measured to structural elements and exclude wall finishes and construction tolerances. 2. All dimensions have been provided by our consultant architects. 3. All materials, dimensions & drawings are approximate. Information is subject to change without notice. 4. Actual suite area may vary from the stated area. Drawings not to scale. The developer reserves the right to make revisions. 5. Calculation of suite area is measured as the area bounded by the centre line of demising or partition walls separating one unit from another unit, the exterior face of all exterior walls, and the exterior face of the corridor wall enclosing the adjoining unit. 6. Calculation of balcony area is measured as the area bounded by the centre line of demising or partition walls separating one unit from another unit, the outmost face of the enclosing guard and the external face of the unit adjoining the balcony. 7. The units are measured at typical floor in the building. Columns may vary in size depending on the floor level. 8. Areas have been calculated in accordance with Dubai Land Department method of measurement as at October 2014.





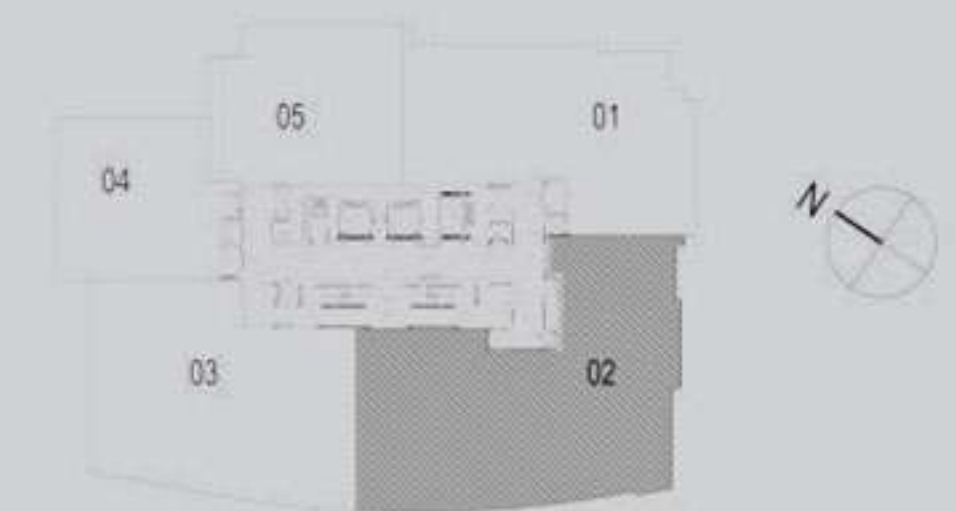
SOUTH TOWER

3 BEDROOMS  
WITH TERRACE

UNIT 02

LEVELS 35-37

|              | Sq.m   | Sq.ft    |
|--------------|--------|----------|
| Suite Area   | 184.56 | 1,986.59 |
| Terrace Area | 15.73  | 169.32   |
| Total Area   | 200.29 | 2,155.90 |





# دبي كريك رزیدنسز

## DUBAI CREEK RESIDENCES

دبي كريك هاربر  
DUBAI CREEK HARBOUR

الخيران  
THE LAGOONS

DUBAI  
HOLDING



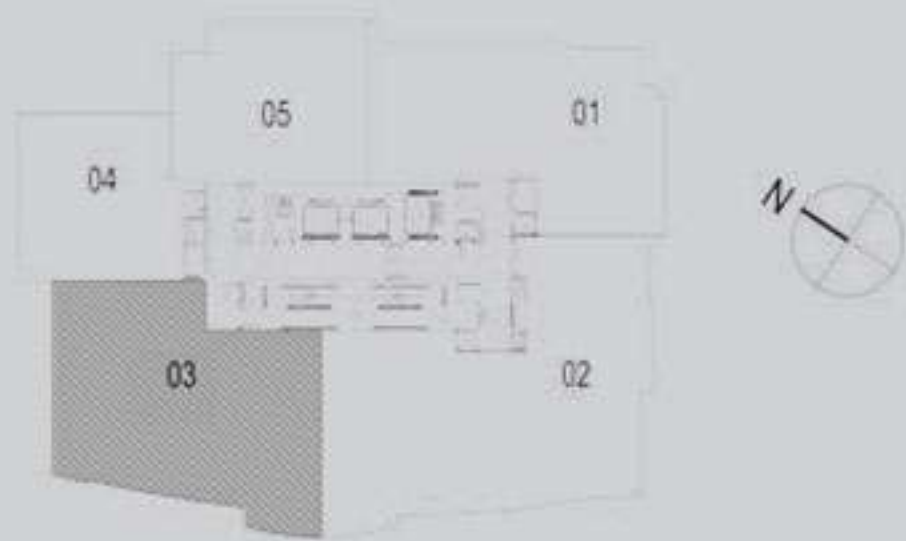
SOUTH T1

2 BEDROOMS  
WITH TERRACE

UNIT 03

LEVELS 3-15  
AND 17-34

|              | Sq.m   | Sq.ft    |
|--------------|--------|----------|
| Suite Area   | 139.44 | 1,500.92 |
| Terrace Area | 12.52  | 134.76   |
| Total Area   | 151.96 | 1,635.68 |



Disclaimer: 1. All room dimensions are measured to structural elements and exclude wall finishes and construction tolerances. 2. All dimensions have been provided by our consultant architects. 3. All materials, dimensions & drawings are approximate. Information is subject to change without notice. 4. Actual suite area may vary from the stated area. Drawings not to scale. The developer reserves the right to make revisions. 5. Calculation of suite area is measured as the area bounded by the centre line of demising or partition walls separating one unit from another unit, the exterior face of all exterior walls, and the exterior face of the corridor wall enclosing the adjoining unit. 6. Calculation of balcony area is measured as the area bounded by the centre line of demising or partition walls separating one unit from another unit, the outmost face of the enclosing guard and the external face of the unit adjoining the balcony. 7. The units are measured at typical floor in the building. Columns may vary in size depending on the floor level. 8. Areas have been calculated in accordance with Dubai Land Department method of measurement as at October 2014.





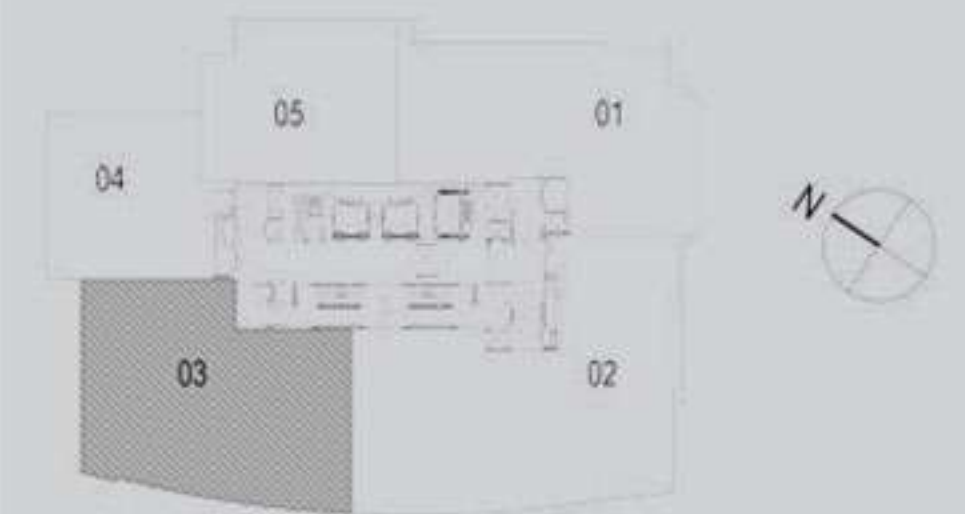
SOUTH TOWER

2 BEDROOMS  
WITH TERRACE

UNIT 03

LEVELS 35-37

|              | Sq.m   | Sq.ft    |
|--------------|--------|----------|
| Suite Area   | 141.00 | 1,517.71 |
| Terrace Area | 11.24  | 120.99   |
| Total Area   | 152.24 | 1,638.70 |







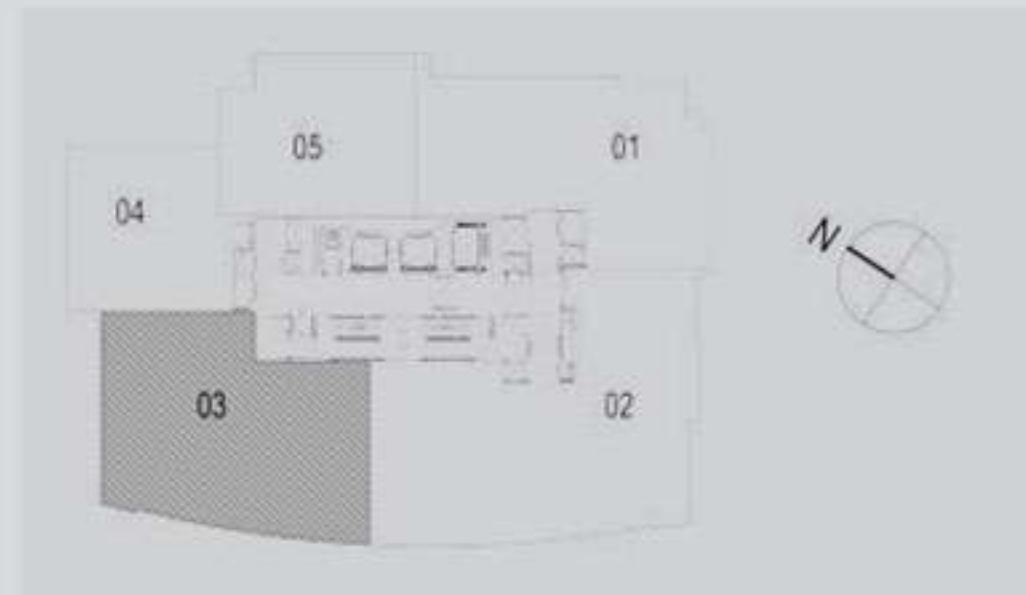
SOUTH T1

2 BEDROOMS  
WITH TERRACE

UNIT 03

LEVELS 35-37

|              | Sq.m   | Sq.ft    |
|--------------|--------|----------|
| Suite Area   | 141.00 | 1,517.71 |
| Terrace Area | 11.24  | 120.99   |
| Total Area   | 152.24 | 1,638.70 |







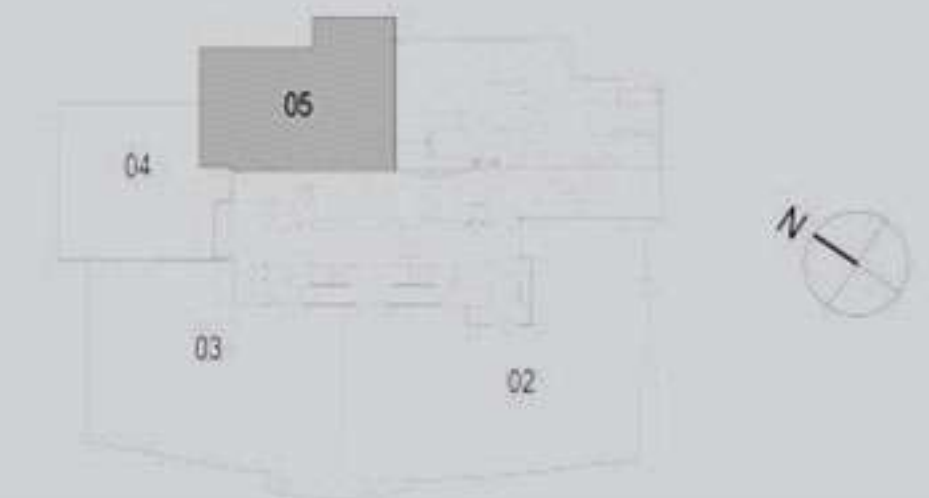
SOUTH T1

1 BEDROOM  
WITH TERRACE

UNIT 05

LEVEL 3

|              | Sq.m   | Sq.ft    |
|--------------|--------|----------|
| Suite Area   | 83.52  | 899.00   |
| Terrace Area | 49.55  | 533.35   |
| Total Area   | 133.07 | 1,432.35 |



Disclaimer: 1. All room dimensions are measured to structural elements and exclude wall finishes and construction tolerances. 2. All dimensions have been provided by our consultant architects. 3. All materials, dimensions & drawings are approximate. Information is subject to change without notice. 4. Actual suite area may vary from the stated area. Drawings not to scale. The developer reserves the right to make revisions. 5. Calculation of suite area is measured as the area bounded by the centre line of demising or partition walls separating one unit from another unit, the exterior face of all exterior walls, and the exterior face of the corridor wall enclosing the adjoining unit. 6. Calculation of balcony area is measured as the area bounded by the centre line of demising or partition walls separating one unit from another unit, the outmost face of the enclosing guard and the external face of the unit adjoining the balcony. 7. The units are measured at typical floor in the building. Columns may vary in size depending on the floor level. 8. Areas have been calculated in accordance with Dubai Land Department method of measurement as at October 2014.

7. The units are measured at typical floor in the building. Columns may vary in size depending on the floor level. 8. Areas have been calculated in accordance with Dubai Land Department method of measurement as at October 2014.



# دبي كريك رزیدنسز

## DUBAI CREEK RESIDENCES

فـجـة دـبـي  
DUBAI CREEK HARBOUR

الفـجـة  
THE LAGOONS

DUBAI  
HOLDING



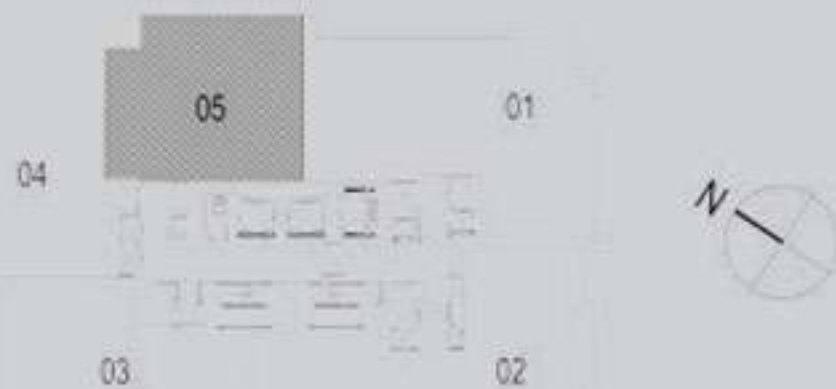
SOUTH T1

1 BEDROOM  
WITH TERRACE

UNIT 05

LEVELS 4-15  
AND 17-37

|              | Sq.m  | Sq.ft  |
|--------------|-------|--------|
| Suite Area   | 83.52 | 899.00 |
| Terrace Area | 8.07  | 86.86  |
| Total Area   | 91.59 | 985.87 |



Disclaimer: 1. All room dimensions are measured to structural elements and exclude wall finishes and construction tolerances. 2. All dimensions have been provided by our consultant architects. 3. All materials, dimensions & drawings are approximate. Information is subject to change without notice. 4. Actual suite area may vary from the stated area. Drawings not to scale. The developer reserves the right to make revisions. 5. Calculation of suite area is measured as the area bounded by the centre line of demising or partition walls separating one unit from another unit, the exterior face of all exterior walls, and the exterior face of the corridor wall enclosing the adjoining unit. 6. Calculation of balcony area is measured as the area bounded by the centre line of demising or partition walls separating one unit from another unit, the outmost face of the enclosing guard and the external face of the unit adjoining the balcony. 7. The units are measured at typical floor in the building. Columns may vary in size depending on the floor level. 8. Areas have been calculated in accordance with Dubai Land Department method of measurement as at October 2014.





## **CONTACT US**

**Toll Free : 800 37373**

**Hotline : +971 52 754 3244**

**Email: sales@drehomes.com**

**Visit Us For More Info:-**

**<https://drehomes.com/property/emaar-dubai-creek-residences/>**