



# BOULEVARD POINT

Make your next  
move the right one.



# Floor Plans

## BOULEVARD POINT

### 1 BEDROOM

BALCONY

UNIT

01

LEVEL 12-26

SUITE AREA  
833.50 <sup>Sq.ft.</sup> / 77.43 <sup>Sq.m.</sup>

BALCONY AREA  
85.91 <sup>Sq.ft.</sup> / 8.26 <sup>Sq.m.</sup>

TOTAL AREA  
922.41 <sup>Sq.ft.</sup> / 85.69 <sup>Sq.m.</sup>



## BOULEVARD POINT

### 2 BEDROOM

BALCONY

UNIT

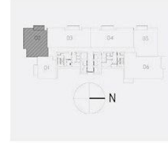
02

LEVEL 28-50 & 52-59

SUITE AREA  
1,337.53 <sup>Sq.ft.</sup> / 124.26 <sup>Sq.m.</sup>

BALCONY AREA  
104.51 <sup>Sq.ft.</sup> / 9.71 <sup>Sq.m.</sup>

TOTAL AREA  
1,442.04 <sup>Sq.ft.</sup> / 133.97 <sup>Sq.m.</sup>



## BOULEVARD POINT

### 3 BEDROOM

BALCONY

UNIT

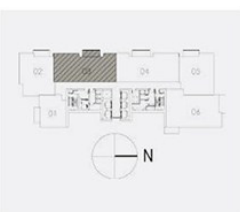
03

LEVEL 28-50 & 52-59

SUITE AREA  
1,713.38 <sup>Sq.ft.</sup> / 159.18 <sup>Sq.m.</sup>

BALCONY AREA  
115.30 <sup>Sq.ft.</sup> / 10.71 <sup>Sq.m.</sup>

TOTAL AREA  
1,828.68 <sup>Sq.ft.</sup> / 169.89 <sup>Sq.m.</sup>





## **CONTACT US**

**Toll Free : 800 37373**

**Hotline : +971 52 754 3244**

**Email : sales@drehomes.com**

**Visit Us For More Info:-**

**<https://drehomes.com/property/emaar-boulevard-point-downtown/>**