

CREEK BEACH

SURF

FLOOR PLANS

EMAAR

BUILDING 1

EMAAR

DUBAI CREEK
HARBOUR

SURF AT
CREEK BEACH

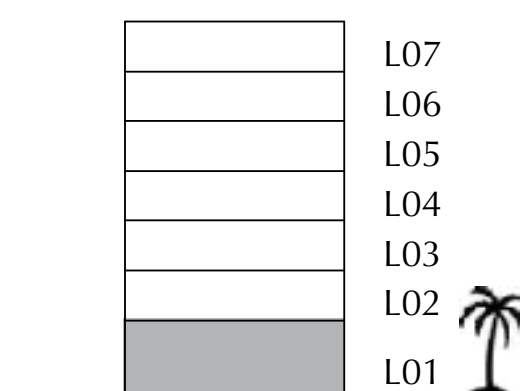
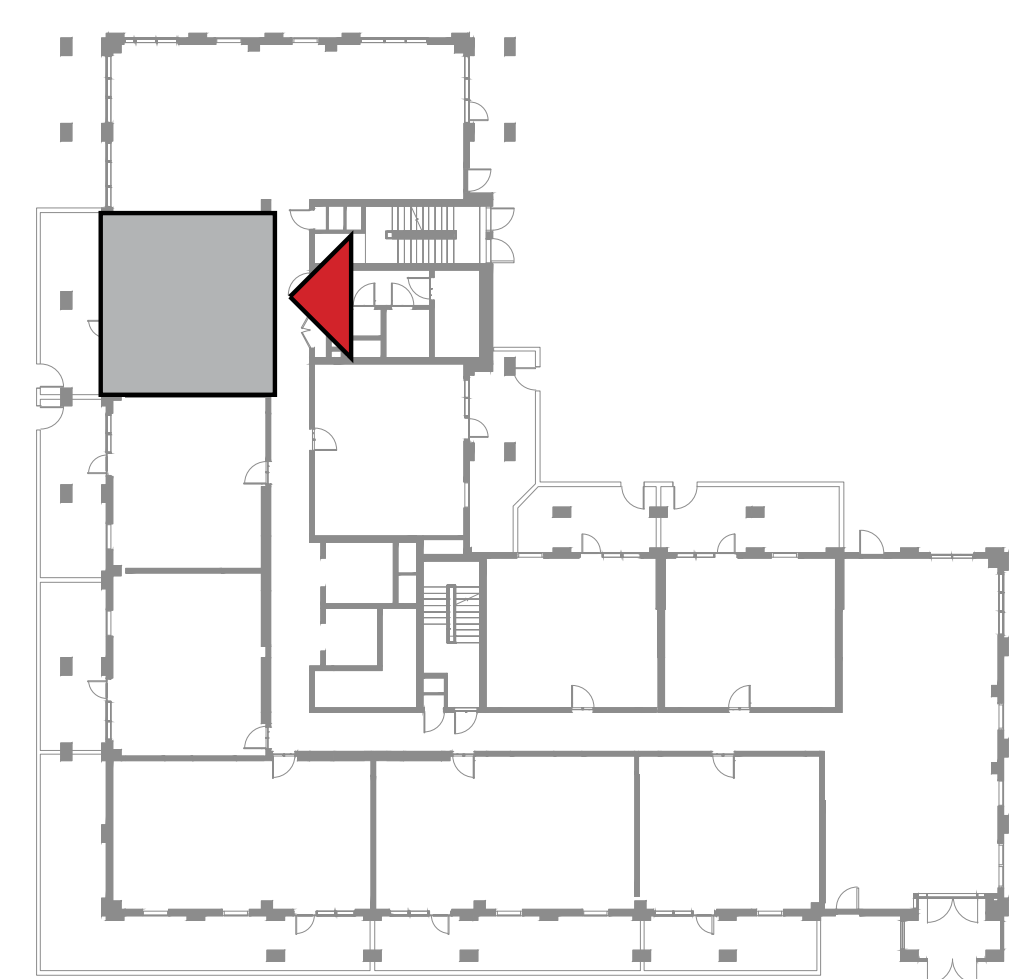
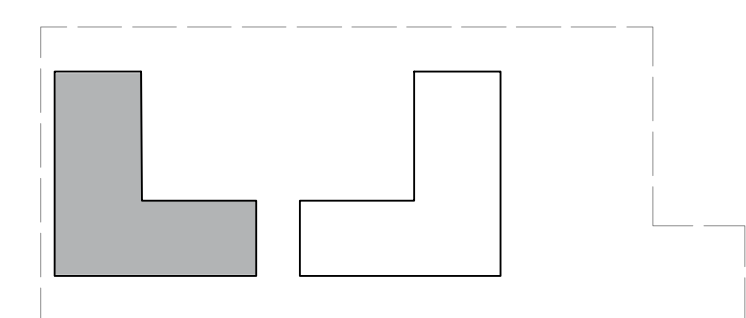
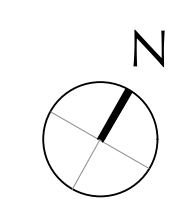
BUILDING 1

LEVEL 1

UNIT 101

1 BEDROOM

APARTMENT AREA	55.71 SQ.M.	599.66 SQ.FT.
BALCONY AREA	27.15 SQ.M.	292.24 SQ.FT.
TOTAL AREA	82.86 SQ.M.	891.90 SQ.FT.



FLOOR PLAN 1. All dimensions are in imperial and metric, and measured from finish to finish excluding construction tolerances. 2. All materials, dimensions, and drawings are approximate only. 3. Information is subject to change without notice, at developer's absolute discretion. 4. Actual area may vary from the stated area. 5. Drawings not to scale. 6. All images used are for illustrative purposes only and do not represent the actual size, features, specifications, fittings, and furnishings. 7. The developer reserves the right to make revisions / alterations, at it's absolute discretion, without any liability whatsoever.

DUBAI CREEK
HARBOUR

SURF AT
CREEK BEACH

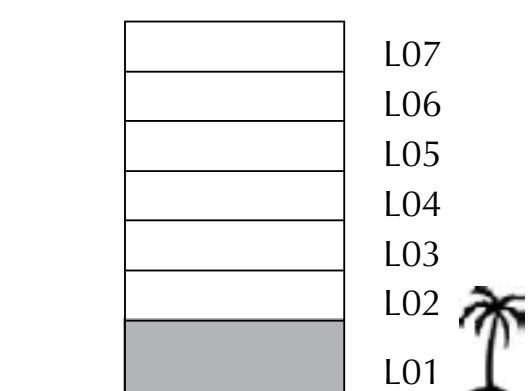
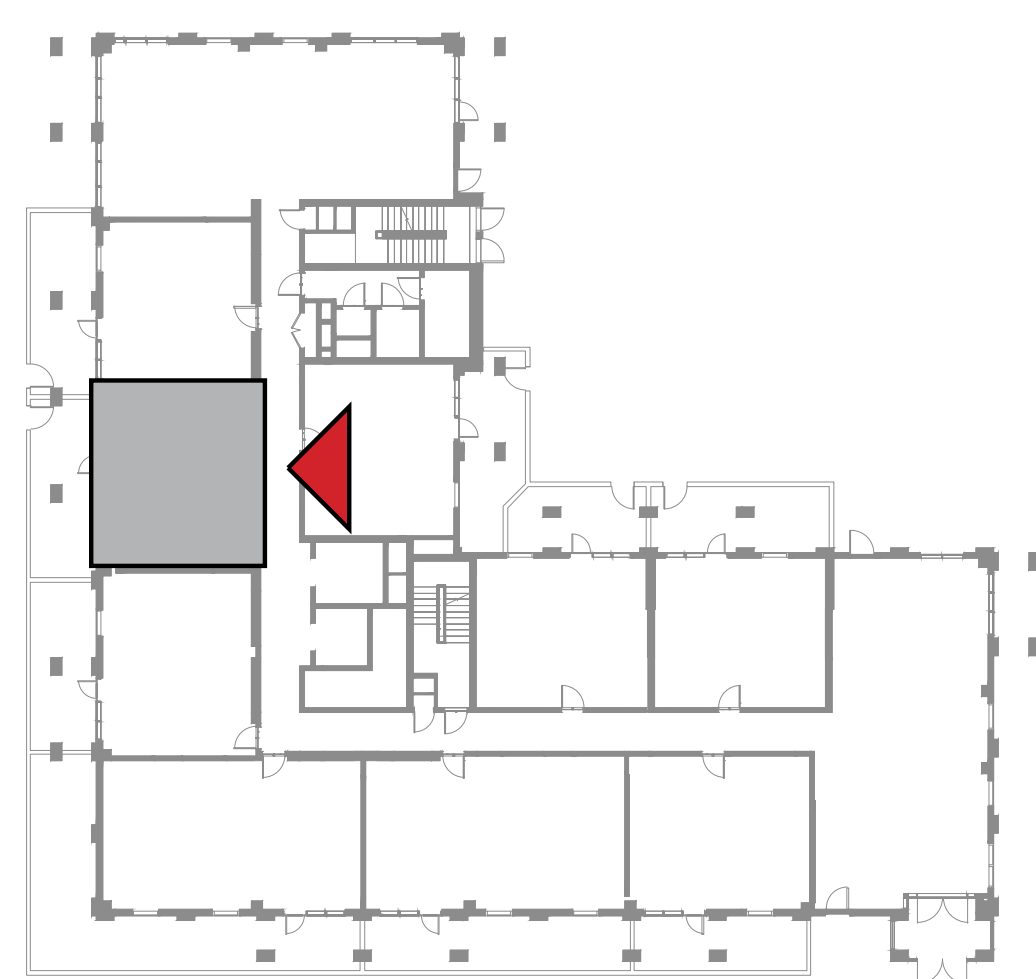
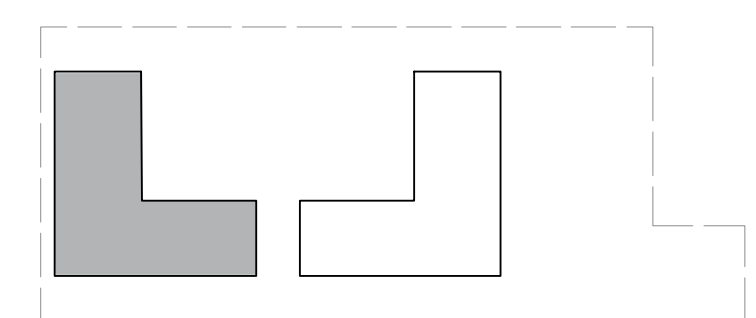
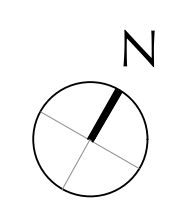
BUILDING 1

LEVEL 1

UNIT 102

1 BEDROOM

APARTMENT AREA	55.99 SQ.M.	602.67 SQ.FT.
BALCONY AREA	26.66 SQ.M.	286.97 SQ.FT.
TOTAL AREA	82.65 SQ.M.	889.64 SQ.FT.



FLOOR PLAN 1. All dimensions are in imperial and metric, and measured from finish to finish excluding construction tolerances. 2. All materials, dimensions, and drawings are approximate only. 3. Information is subject to change without notice, at developer's absolute discretion. 4. Actual area may vary from the stated area. 5. Drawings not to scale. 6. All images used are for illustrative purposes only and do not represent the actual size, features, specifications, fittings, and furnishings. 7. The developer reserves the right to make revisions / alterations, at it's absolute discretion, without any liability whatsoever.

DUBAI CREEK
HARBOUR

SURF AT
CREEK BEACH

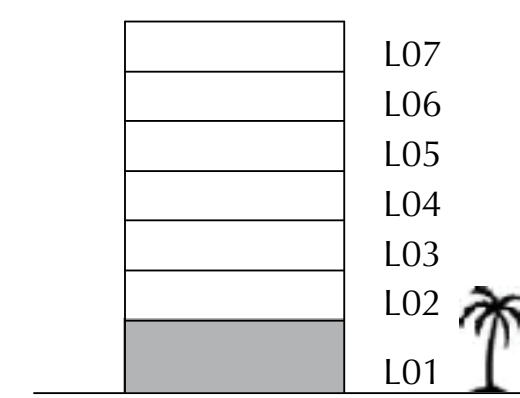
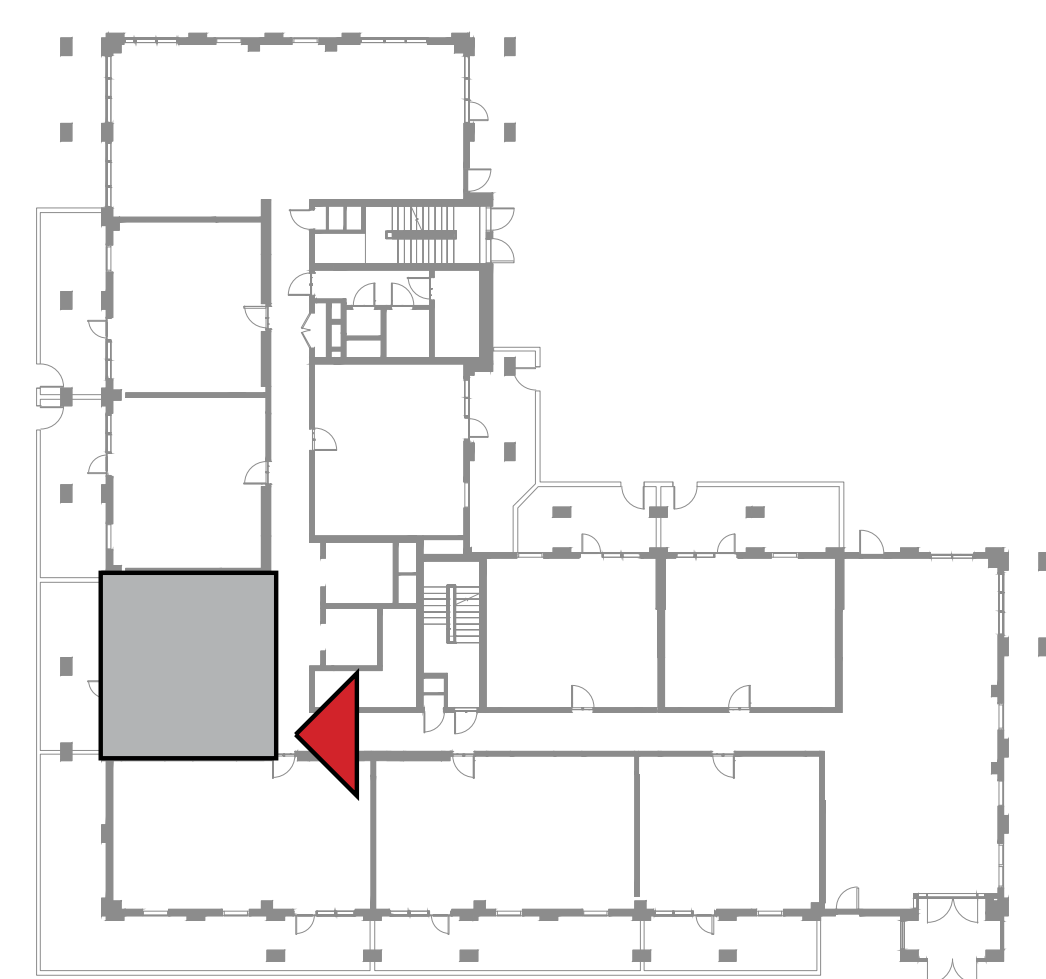
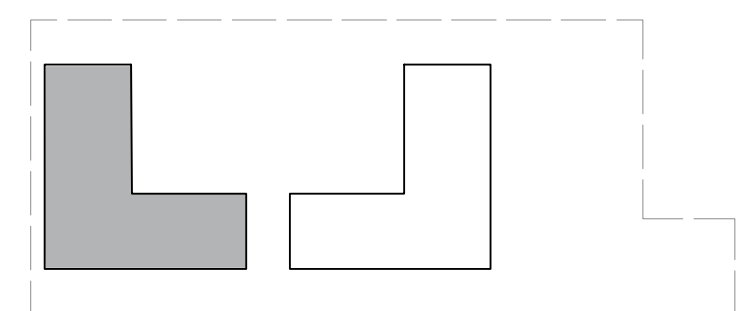
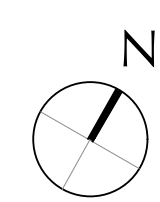
BUILDING 1

LEVEL 1

UNIT 103

1 BEDROOM

APARTMENT AREA	59.78 SQ.M.	643.47 SQ.FT.
BALCONY AREA	25.03 SQ.M.	269.42 SQ.FT.
TOTAL AREA	84.81 SQ.M.	912.89 SQ.FT.



FLOOR PLAN 1. All dimensions are in imperial and metric, and measured from finish to finish excluding construction tolerances. 2. All materials, dimensions, and drawings are approximate only. 3. Information is subject to change without notice, at developer's absolute discretion. 4. Actual area may vary from the stated area. 5. Drawings not to scale. 6. All images used are for illustrative purposes only and do not represent the actual size, features, specifications, fittings, and furnishings. 7. The developer reserves the right to make revisions / alterations, at it's absolute discretion, without any liability whatsoever.

DUBAI CREEK
HARBOUR

SURF AT
CREEK BEACH

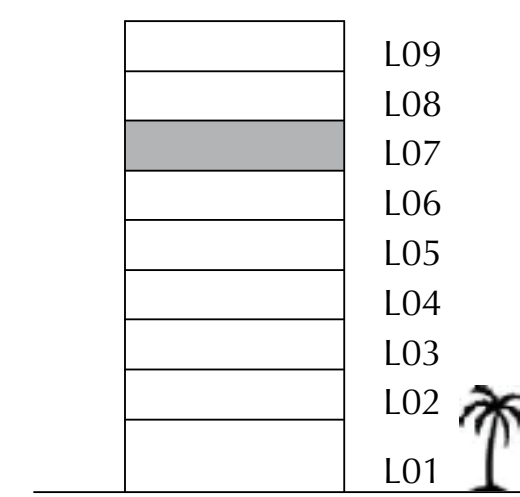
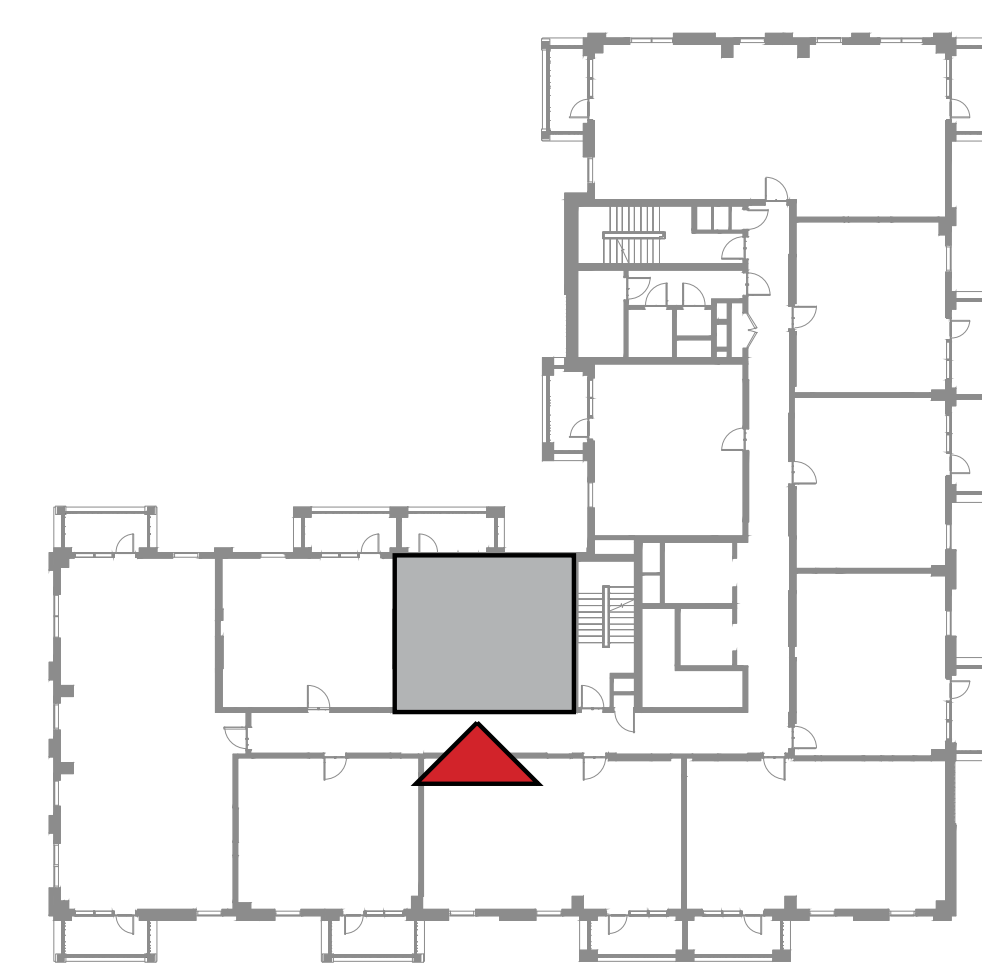
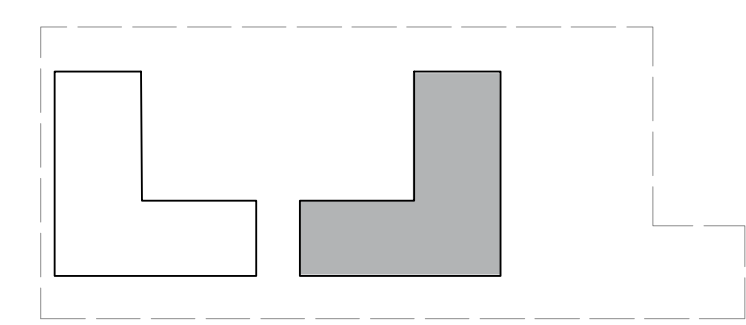
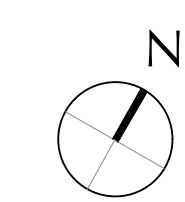
BUILDING 2

LEVEL 7

UNIT 710

1 BEDROOM

APARTMENT AREA	55.56 SQ.M.	598.04 SQ.FT.
BALCONY AREA	8.40 SQ.M.	90.42 SQ.FT.
TOTAL AREA	63.96 SQ.M.	688.46 SQ.FT.



FLOOR PLAN 1. All dimensions are in imperial and metric, and measured from finish to finish excluding construction tolerances. 2. All materials, dimensions, and drawings are approximate only. 3. Information is subject to change without notice, at developer's absolute discretion. 4. Actual area may vary from the stated area. 5. Drawings not to scale. 6. All images used are for illustrative purposes only and do not represent the actual size, features, specifications, fittings, and furnishings. 7. The developer reserves the right to make revisions / alterations, at it's absolute discretion, without any liability whatsoever.