



GRANDE

FLOOR PLANS



DOWNTOWN DUBAI

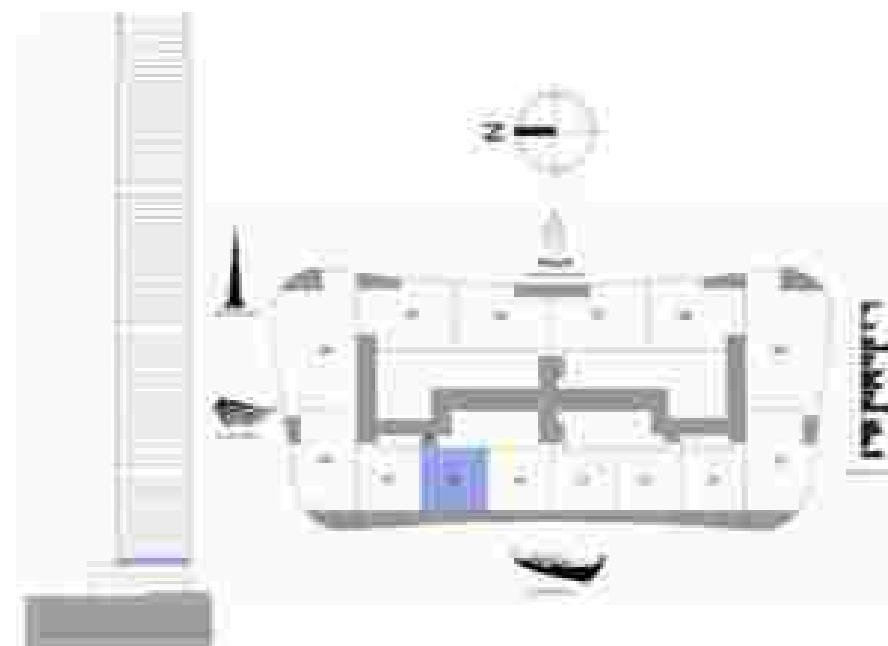
GRANDE

LEVEL 3

1 BEDROOM

UNIT 1

SUITE AREA	721.18 SQ.FT.	67.0 SQ.M.
BALCONY AREA	189.16 SQ.FT.	10.16 SQ.M.
TOTAL AREA	910.34 SQ.FT.	77.16 SQ.M.



FLOOR PLAN 1: All dimensions are in imperial and metric, and measured from finish to finish excluding construction tolerances. 2. All materials, dimensions, and drawings are approximate only. 3. Information is subject to change without notice, at developer's absolute discretion. 4. Actual area may vary from the stated area. 5. Drawings not to scale. 6. All images used are for illustrative purposes only and do not represent the actual size, features, specifications, fittings, and furnishings. 7. The developer reserves the right to make revisions / alterations, at its absolute discretion, without any liability whatsoever.

DOWNTOWN DUBAI

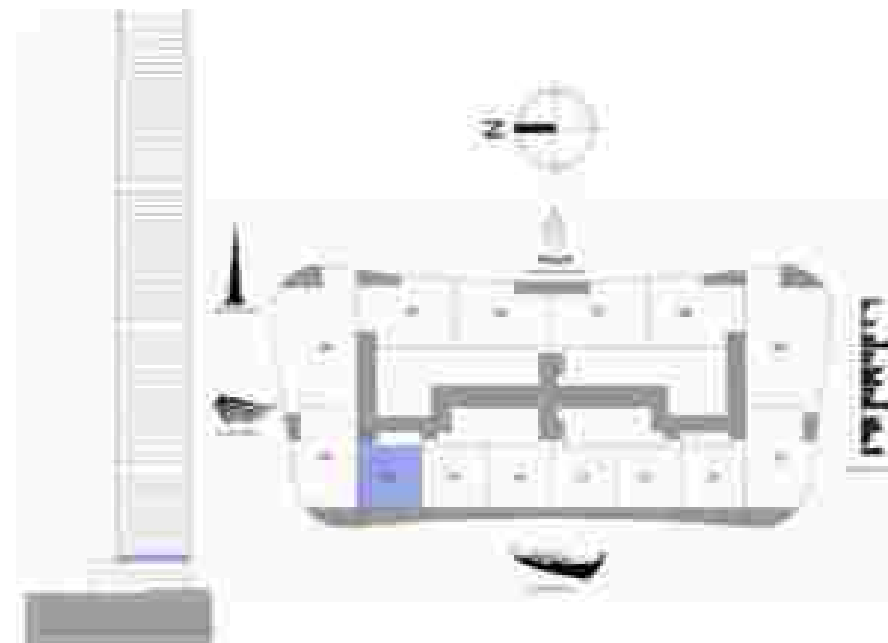
GRANDE

LEVEL 3

1 BEDROOM

UNIT 2

SUITE AREA	725.49 SQ.FT.	66.90 SQ.M.
BALCONY AREA	147.47 SQ.FT.	13.7 SQ.M.
TOTAL AREA	872.96 SQ.FT.	80.60 SQ.M.



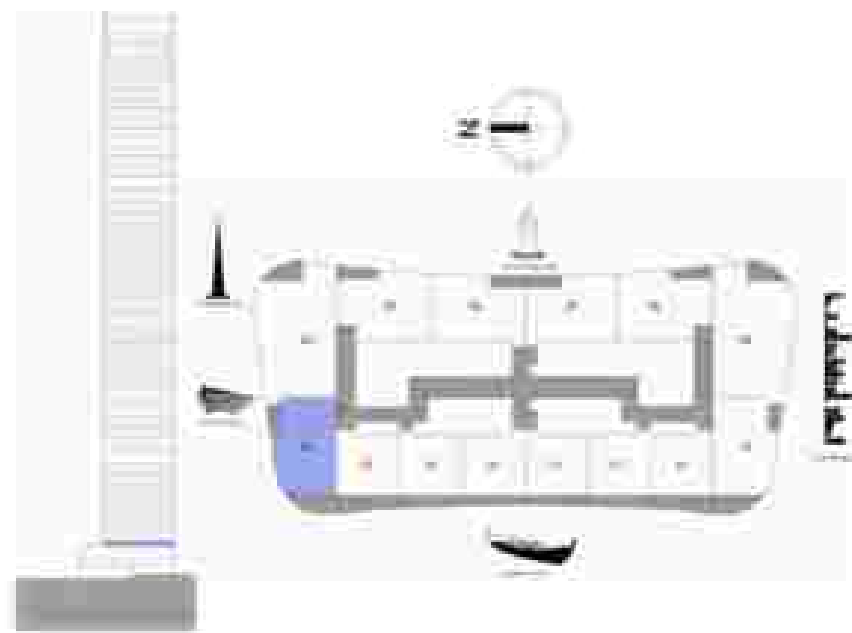
GRANDE

LEVEL 3

2 BEDROOM

UNIT 3

SITE AREA	100,226 SQ.FT.	100,64 SQ.M.
BALCONY AREA	161,297 SQ.FT.	15,04 SQ.M.
TOTAL AREA	1241,17 SQ.FT.	115,60 SQ.M.



FLOOR PLAN 1. All dimensions are in imperial and metric, and measured from finish to finish excluding construction tolerances. 2. All materials, dimensions, and drawings are approximate only. 3. Information is subject to change without notice, at developer's absolute discretion. 4. Actual area may vary from the stated area. 5. Drawings not to scale. 6. All images used are for illustrative purposes only and do not represent the actual size, features, specifications, fittings, and furnishings. 7. The developer reserves the right to make revisions / alterations, at its absolute discretion, without any liability whatsoever.

DOWNTOWN DUBAI

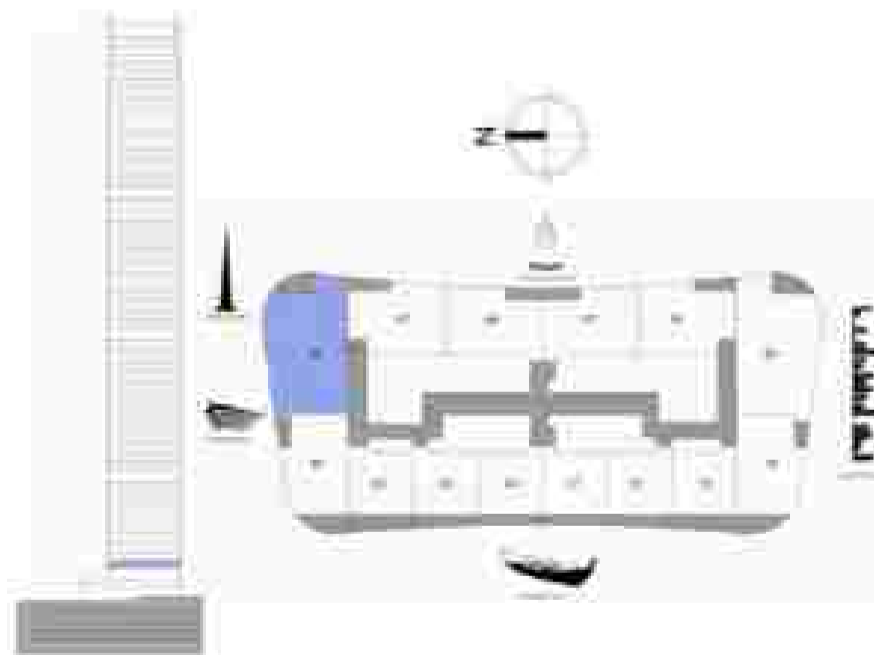
GRANDE

LEVEL 3

3 BEDROOM

UNIT 4

SUITE AREA	1756.67 SQ.FT.	163.20 SQ.M.
BALCONY AREA	104.73 SQ.FT.	9.73 SQ.M.
TOTAL AREA	1861.40 SQ.FT.	172.93 SQ.M.



DOWNTOWN DUBAI

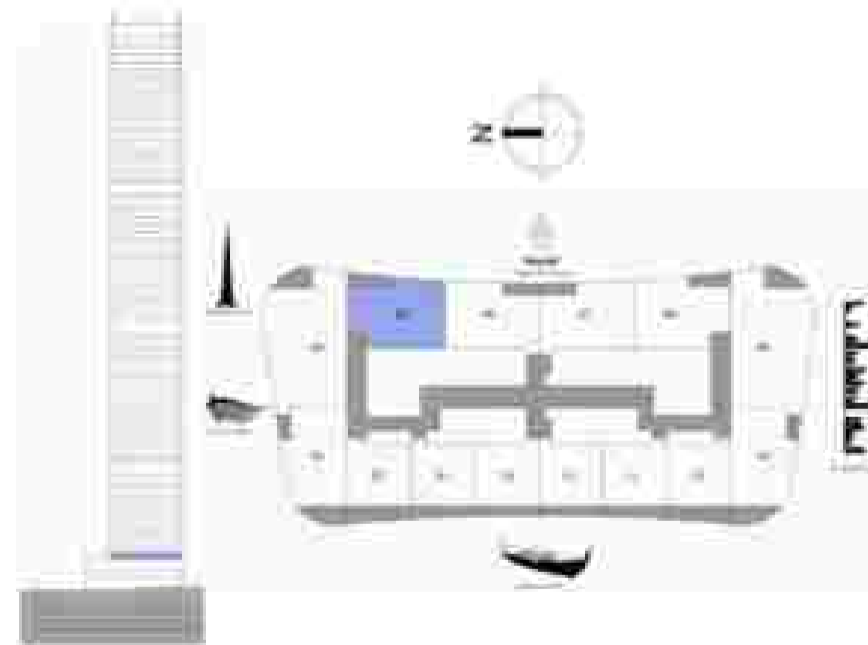
GRANDE

LEVEL 3

2 BEDROOM

UNIT 5

SUITE AREA	1124.29 SQ.FT.	104.49 SQ.M.
BALCONY AREA	127.60 SQ.FT.	11.78 SQ.M.
TOTAL AREA	1251.89 SQ.FT.	116.27 SQ.M.



FLOOR PLAN 1: All dimensions are in imperial and metric, and measured from finish to finish excluding construction tolerances. 2. All materials, dimensions, and drawings are approximate only. 3. Information is subject to change without notice, at developer's absolute discretion. 4. Actual area may vary from the stated area. 5. Drawings not to scale. 6. All images used are for illustrative purposes only and do not represent the actual size, features, specifications, fittings, and furnishings. 7. The developer reserves the right to make revisions / alterations, at its absolute discretion, without any liability whatsoever.

DOWNTOWN
DUBAI



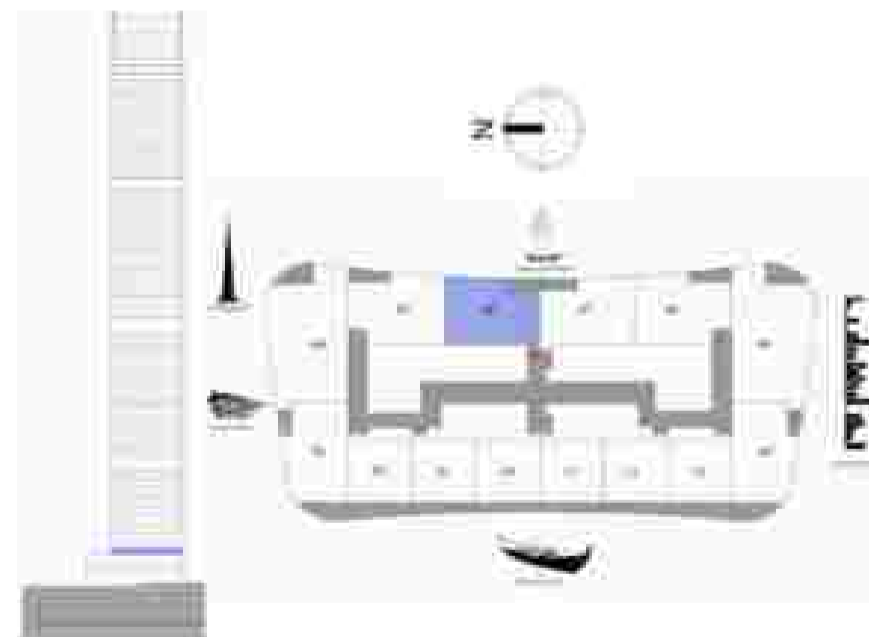
GRANDE

LEVEL 3

2 BEDROOM

UNIT 6

SUITE AREA	1074.98 SQ.FT.	99.59 SQ.M.
BALCONY AREA	83.12 SQ.FT.	7.65 SQ.M.
TOTAL AREA	1157.10 SQ.FT.	107.24 SQ.M.



FLOOR PLAN 1. All dimensions are in imperial and metric, and measured from finish to finish excluding construction tolerances. 2. All materials, dimensions, and drawings are approximate only. 3. Information is subject to change without notice, at developer's absolute discretion. 4. Actual area may vary from the stated area. 5. Drawings not to scale. 6. All images used are for illustrative purposes only and do not represent the actual size, features, specifications, fittings, and furnishings. 7. The developer reserves the right to make revisions / alterations, at its absolute discretion, without any liability whatsoever.

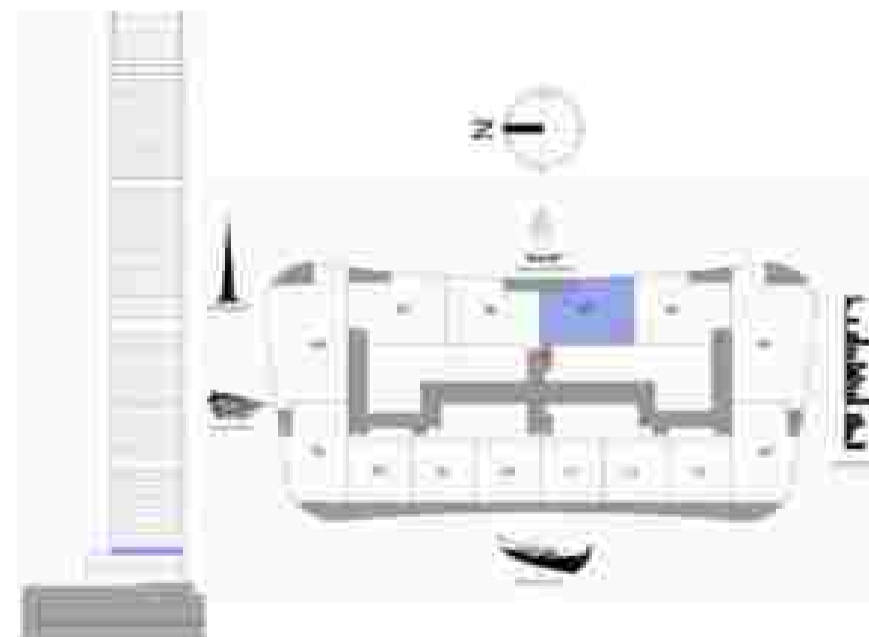
GRANDE

LEVEL 3

2 BEDROOM

UNIT 7

SUITE AREA	1074.98 SQ.FT.	99.59 SQ.M.
BALCONY AREA	83.12 SQ.FT.	7.67 SQ.M.
TOTAL AREA	1157.10 SQ.FT.	107.26 SQ.M.



FLOOR PLAN 1. All dimensions are in imperial and metric, and measured from finish to finish excluding construction tolerances. 2. All materials, dimensions, and drawings are approximate only. 3. Information is subject to change without notice, at developer's absolute discretion. 4. Actual area may vary from the stated area. 5. Drawings not to scale. 6. All images used are for illustrative purposes only and do not represent the actual size, features, specifications, fittings, and furnishings. 7. The developer reserves the right to make revisions / alterations, at its absolute discretion, without any liability whatsoever.

DOWNTOWN
DUBAI

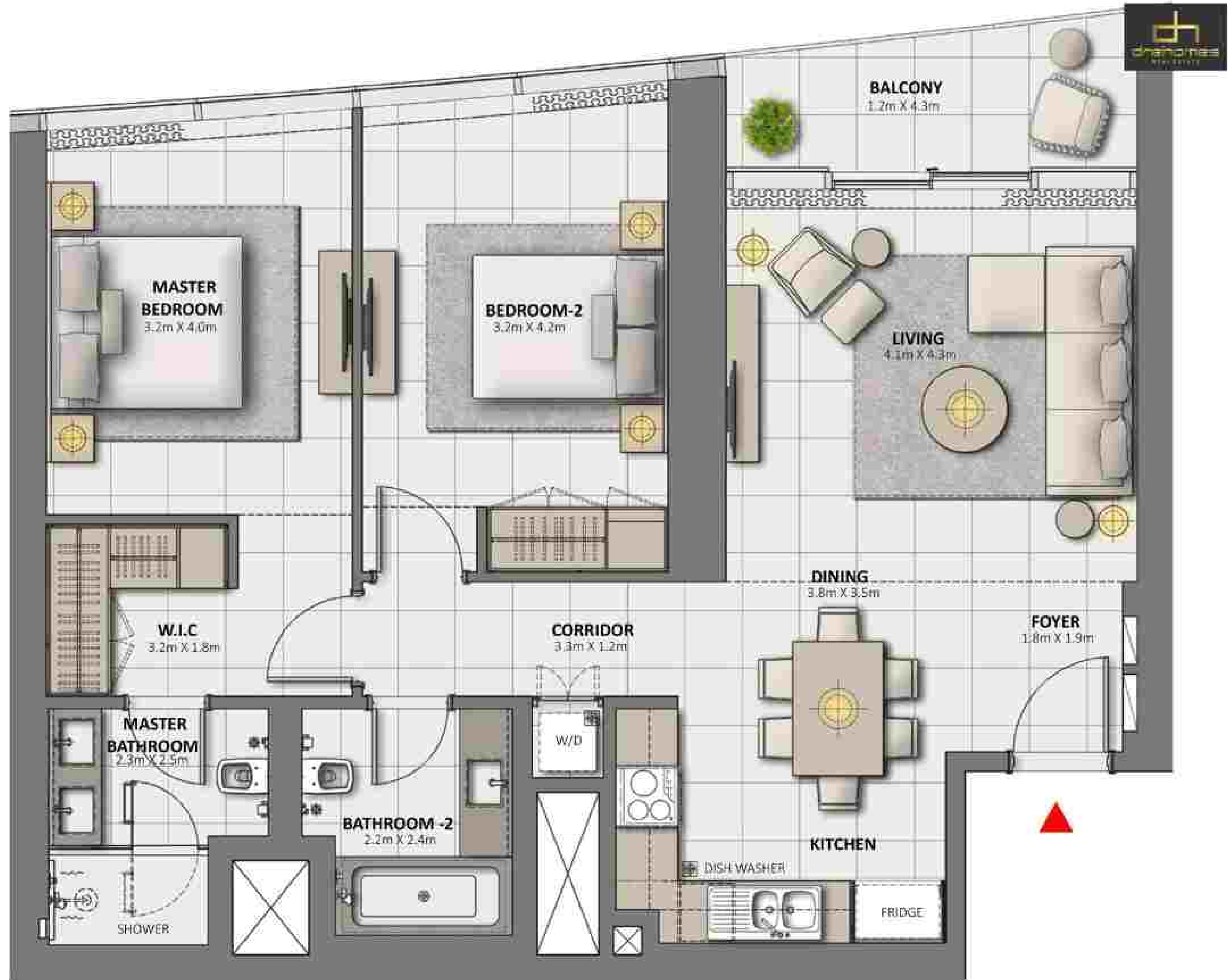
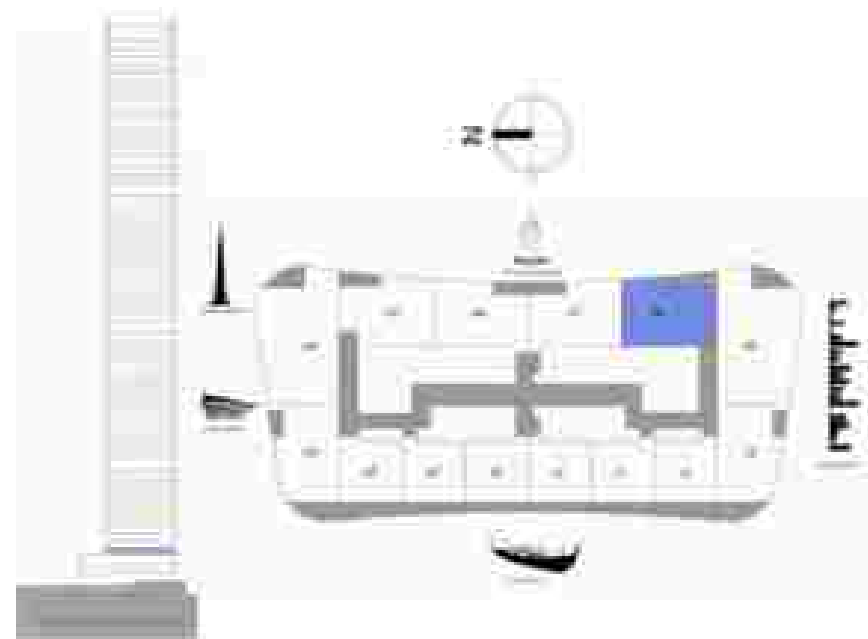
GRANDE

LEVEL 3

2 BEDROOM

UNIT B

SUITE AREA	1124.29 SQ.FT.	104.45 SQ.M.
BALCONY AREA	67.60 SQ.FT.	6.28 SQ.M.
TOTAL AREA	1191.89 SQ.FT.	110.73 SQ.M.



FLOOR PLAN 1. All dimensions are in imperial and metric, and measured from finish to finish excluding construction tolerances. 2. All materials, dimensions, and drawings are approximate only. 3. Information is subject to change without notice, at developer's absolute discretion. 4. Actual area may vary from the stated area. 5. Drawings not to scale. 6. All images used are for illustrative purposes only and do not represent the actual size, features, specifications, fittings, and furnishings. 7. The developer reserves the right to make revisions / alterations, at its absolute discretion, without any liability whatsoever.

DOWNTOWN DUBAI

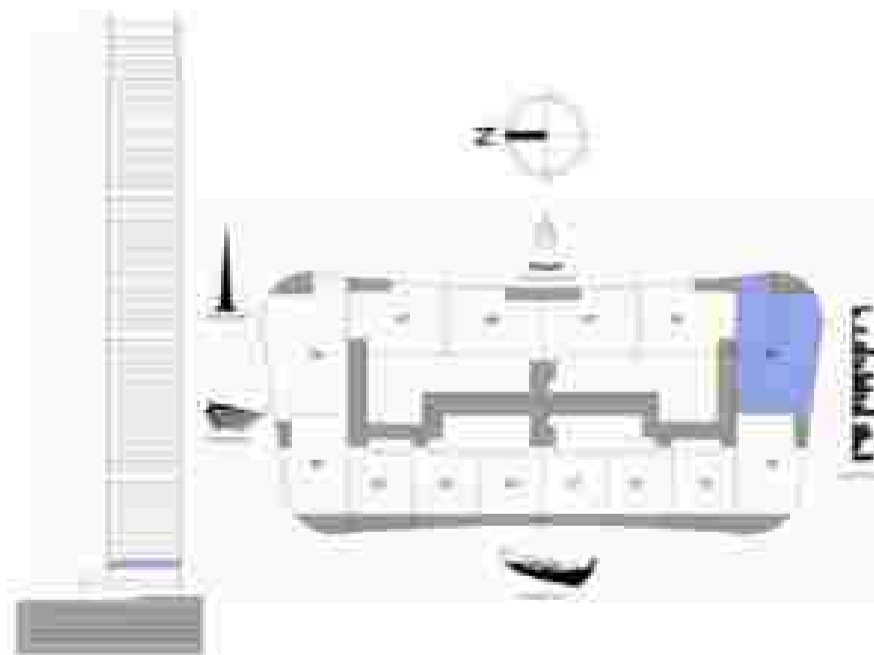
GRANDE

LEVEL 3

3 BEDROOM

UNIT 9

SUITE AREA	1756.67 SQ.FT.	163.20 SQ.M.
BALCONY AREA	104.73 SQ.FT.	9.73 SQ.M.
TOTAL AREA	1861.40 SQ.FT.	172.93 SQ.M.



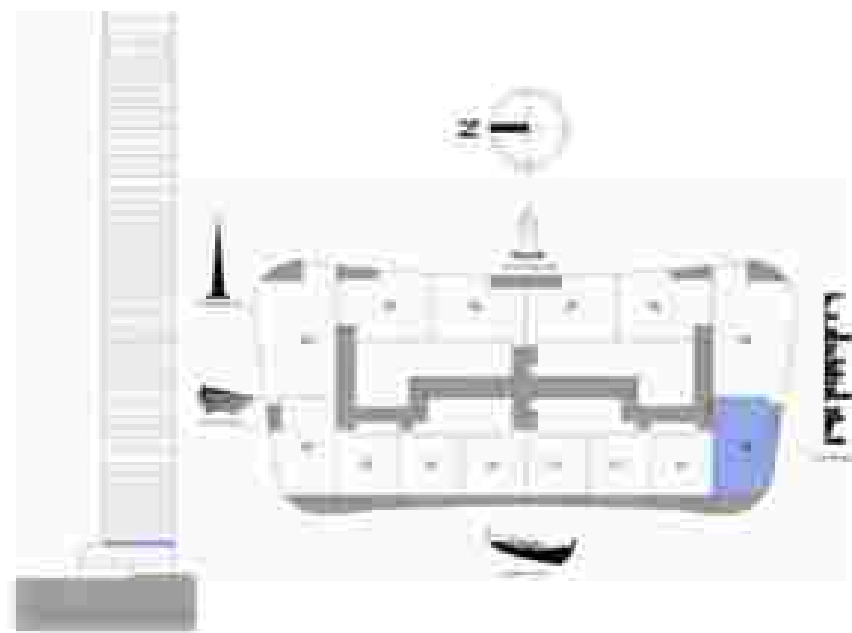
GRANDE

LEVEL 3

2 BEDROOM

UNIT 10

SITE AREA	100,328 SQ.FT.	100,64 SQ.M.
BALCONY AREA	161,297 SQ.FT.	15,04 SQ.M.
TOTAL AREA	1247,17 SQ.FT.	115,60 SQ.M.



FLOOR PLAN 1. All dimensions are in imperial and metric, and measured from finish to finish excluding construction tolerances. 2. All materials, dimensions, and drawings are approximate only. 3. Information is subject to change without notice, at developer's absolute discretion. 4. Actual area may vary from the stated area. 5. Drawings not to scale. 6. All images used are for illustrative purposes only and do not represent the actual size, features, specifications, fittings, and furnishings. 7. The developer reserves the right to make revisions / alterations, at its absolute discretion, without any liability whatsoever.

DOWNTOWN DUBAI

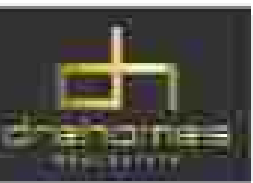
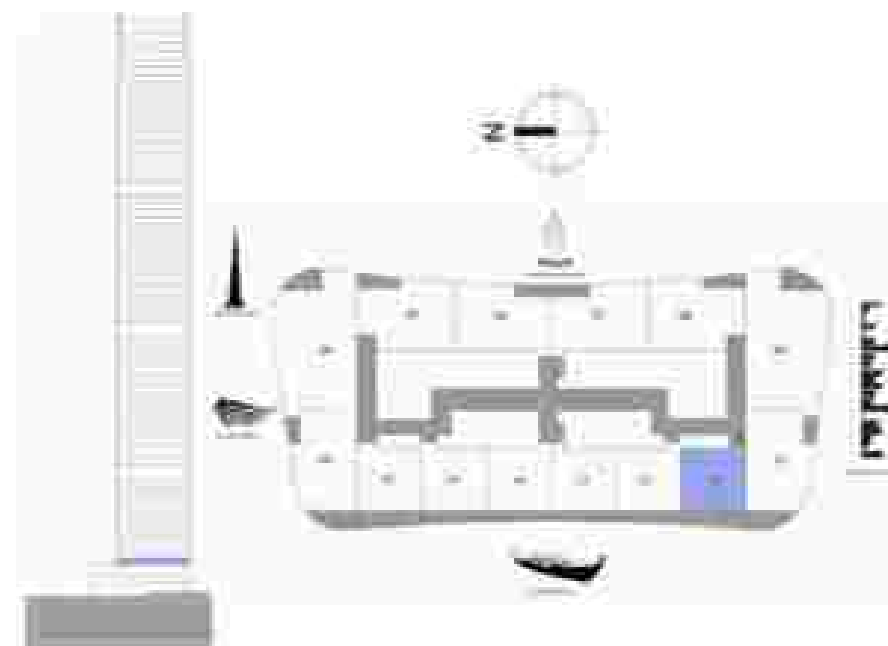
GRANDE

LEVEL 3

1 BEDROOM

UNIT 11

SUITE AREA	725.49 SQ.FT.	66.90 SQ.M.
BALCONY AREA	147.47 SQ.FT.	13.7 SQ.M.
TOTAL AREA	872.96 SQ.FT.	80.60 SQ.M.



FLOOR PLAN 1: All dimensions are in imperial and metric, and measured from finish to finish excluding construction tolerances. 2. All materials, dimensions, and drawings are approximate only. 3. Information is subject to change without notice, at developer's absolute discretion. 4. Actual area may vary from the stated area. 5. Drawings not to scale. 6. All images used are for illustrative purposes only and do not represent the actual size, features, specifications, fittings, and furnishings. 7. The developer reserves the right to make revisions / alterations, at its absolute discretion, without any liability whatsoever.

DOWNTOWN DUBAI

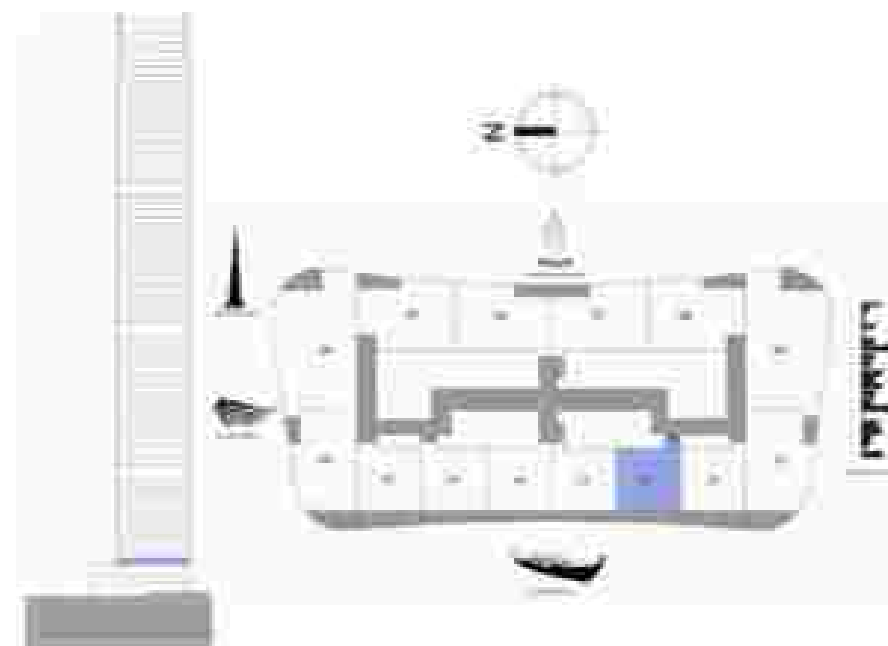
GRANDE

LEVEL 3

1 BEDROOM

UNIT 12

SUITE AREA	721.18 SQ.FT.	67.0 SQ.M.
BALCONY AREA	189.16 SQ.FT.	10.16 SQ.M.
TOTAL AREA	910.34 SQ.FT.	77.16 SQ.M.



FLOOR PLAN 1: All dimensions are in imperial and metric, and measured from finish to finish excluding construction tolerances. 2. All materials, dimensions, and drawings are approximate only. 3. Information is subject to change without notice, at developer's absolute discretion. 4. Actual area may vary from the stated area. 5. Drawings not to scale. 6. All images used are for illustrative purposes only and do not represent the actual size, features, specifications, fittings, and furnishings. 7. The developer reserves the right to make revisions / alterations, at its absolute discretion, without any liability whatsoever.



DOWNTOWN
DUBAI

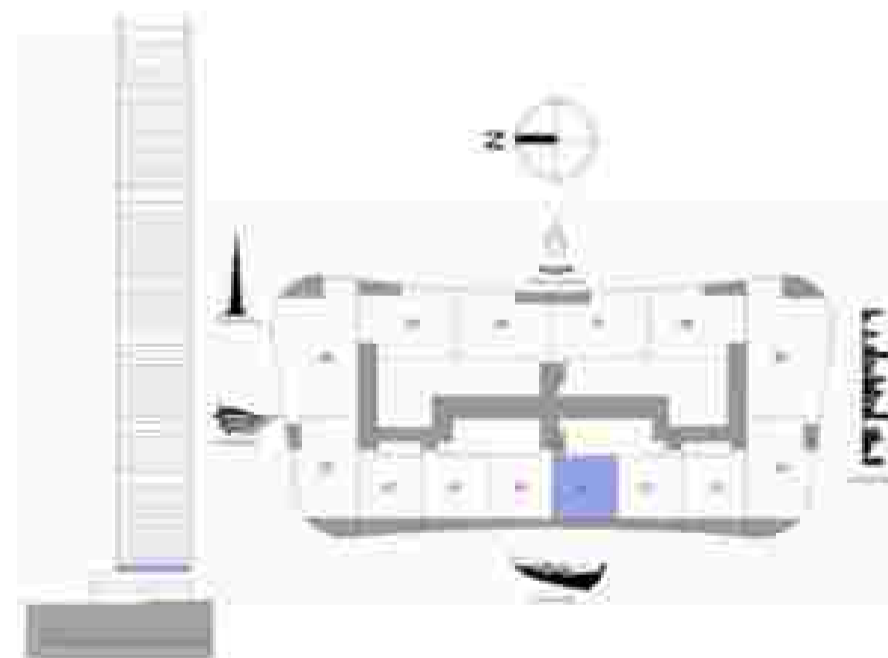
GRANDE

LEVEL 3

1 BEDROOM

UNIT 13

SUITE AREA	721.18 SQ.FT.	67.0 SQ.M.
BALCONY AREA	85.47 SQ.FT.	7.94 SQ.M.
TOTAL AREA	806.65 SQ.FT.	74.94 SQ.M.



FLOOR PLAN 1: All dimensions are in imperial and metric, and measured from finish to finish excluding construction tolerances. 2. All materials, dimensions, and drawings are approximate only. 3. Information is subject to change without notice, at developer's absolute discretion. 4. Actual area may vary from the stated area. 5. Drawings not to scale. 6. All images used are for illustrative purposes only and do not represent the actual size, features, specifications, fittings, and furnishings. 7. The developer reserves the right to make revisions / alterations, at its absolute discretion, without any liability whatsoever.

DOWNTOWN DUBAI

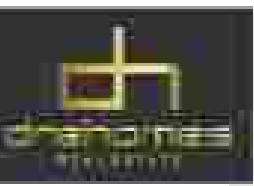
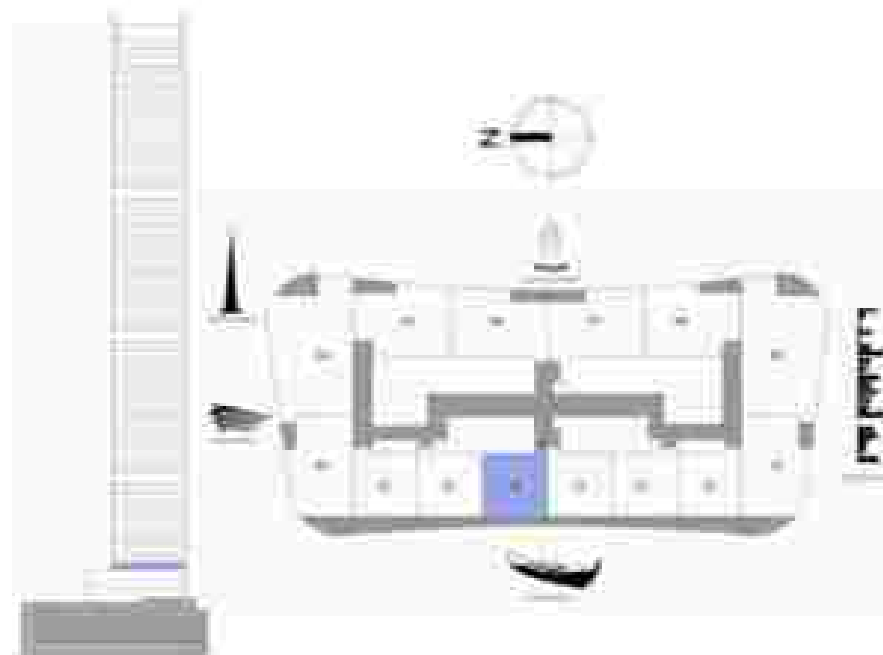
GRANDE

LEVEL 3

1 BEDROOM

UNIT 14

SUITE AREA	721.38 SQ.FT.	67.0 SQ.M.
BALCONY AREA	85.47 SQ.FT.	7.94 SQ.M.
TOTAL AREA	806.85 SQ.FT.	74.94 SQ.M.



FLOOR PLAN 1. All dimensions are in imperial and metric, and measured from finish to finish excluding construction tolerances. 2. All materials, dimensions, and drawings are approximate only. 3. Information is subject to change without notice, at developer's absolute discretion. 4. Actual area may vary from the stated area. 5. Drawings not to scale. 6. All images used are for illustrative purposes only and do not represent the actual size, features, specifications, fittings, and furnishings. 7. The developer reserves the right to make revisions / alterations, at its absolute discretion, without any liability whatsoever.

DOWNTOWN DUBAI

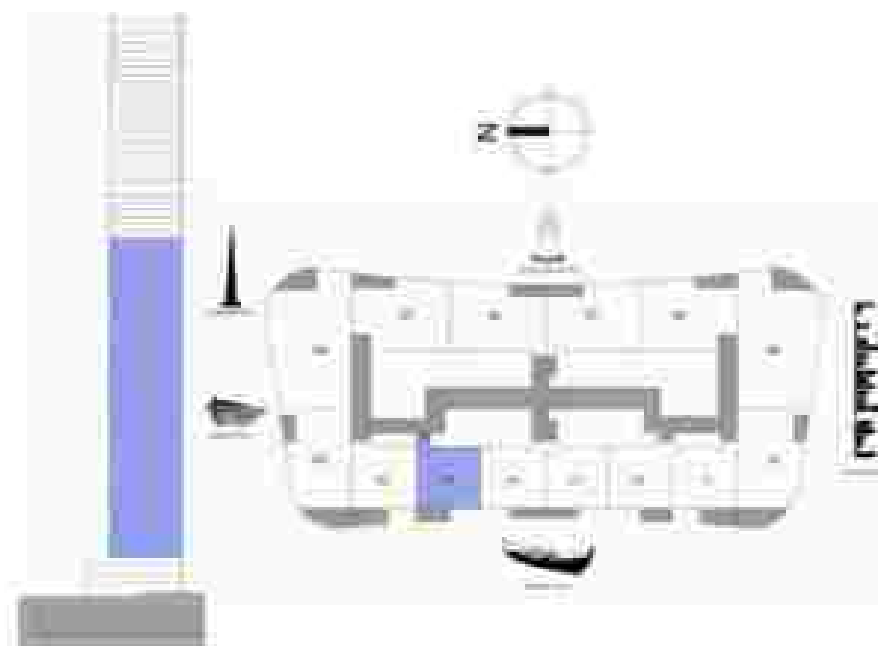
GRANDE

LEVEL 4-52

1 BEDROOM

UNIT 1

SUITE AREA	721.18 SQ.FT.	67.0 SQ.M.
BALCONY AREA	83.18 SQ.FT.	7.7 SQ.M.
TOTAL AREA	804.36 SQ.FT.	74.7 SQ.M.



FLOOR PLAN 1: All dimensions are in imperial and metric, and measured from finish to finish excluding construction tolerances. 2. All materials, dimensions, and drawings are approximate only. 3. Information is subject to change without notice, at developer's absolute discretion. 4. Actual area may vary from the stated area. 5. Drawings not to scale. 6. All images used are for illustrative purposes only and do not represent the actual size, features, specifications, fittings, and furnishings. 7. The developer reserves the right to make revisions / alterations, at its absolute discretion, without any liability whatsoever.

DOWNTOWN DUBAI

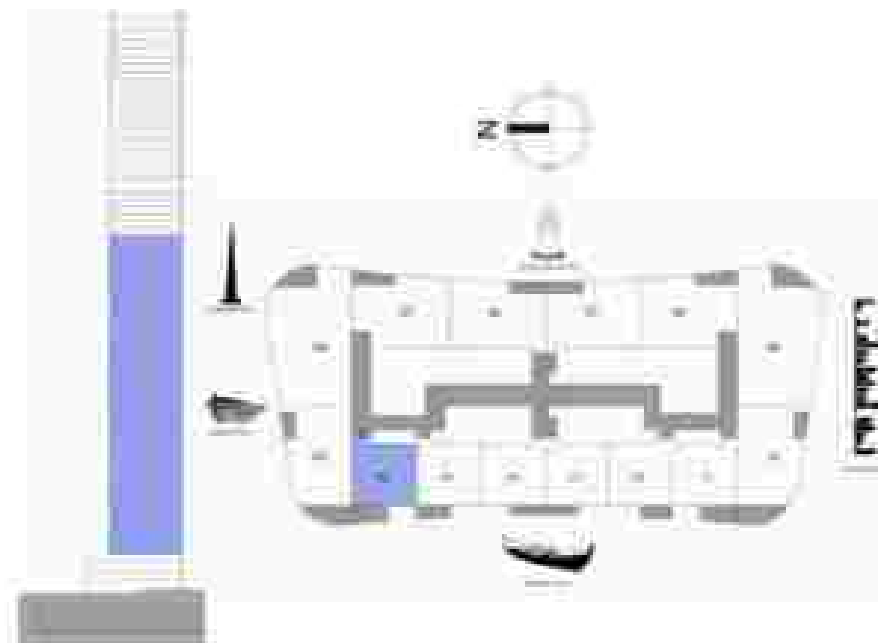
GRANDE

LEVEL 4-52

1 BEDROOM

UNIT 2

SUITE AREA:	725.49 SQ.FT.	67.40 SQ.M.
BALCONY AREA:	86.22 SQ.FT.	8.01 SQ.M.
TOTAL AREA:	811.71 SQ.FT.	75.41 SQ.M.



FLOOR PLAN 1: All dimensions are in imperial and metric, and measured from finish to finish excluding construction tolerances. 2. All materials, dimensions, and drawings are approximate only. 3. Information is subject to change without notice, at developer's absolute discretion. 4. Actual area may vary from the stated area. 5. Drawings not to scale. 6. All images used are for illustrative purposes only and do not represent the actual size, features, specifications, fittings, and furnishings. 7. The developer reserves the right to make revisions / alterations, at its absolute discretion, without any liability whatsoever.

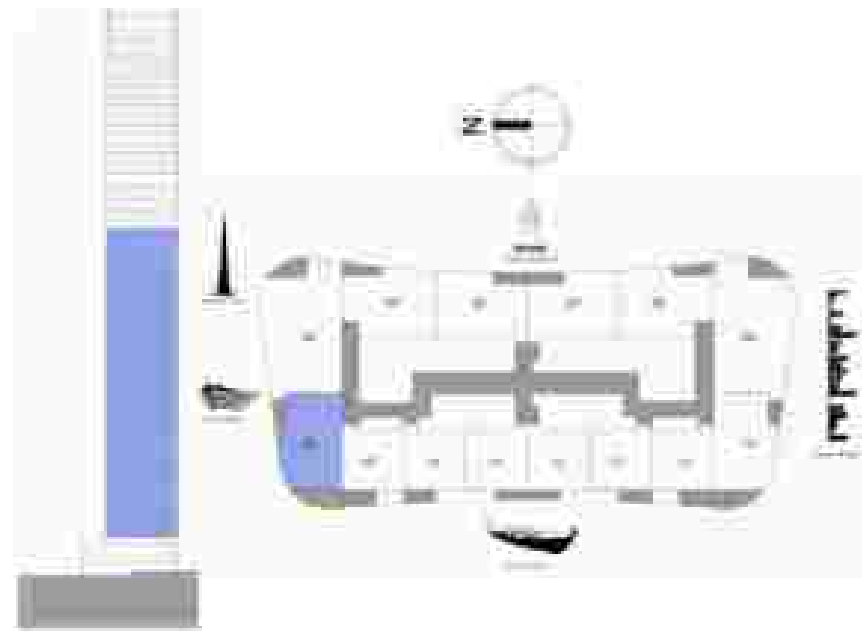
GRANDE

LEVEL 4-52

2 BEDROOM

UNIT 3

NET AREA	1783.28 SQ.FT.	164.64 SQ.M.
BALCONY AREA	161.29 SQ.FT.	15.08 SQ.M.
TOTAL AREA	1245.12 SQ.FT.	115.61 SQ.M.



FLOOR PLAN 1. All dimensions are in imperial and metric, and measured from finish to finish excluding construction tolerances. 2. All materials, dimensions, and drawings are approximate only. 3. Information is subject to change without notice, at developer's absolute discretion. 4. Actual area may vary from the stated area. 5. Drawings not to scale. 6. All images used are for illustrative purposes only and do not represent the actual size, features, specifications, fittings, and furnishings. 7. The developer reserves the right to make revisions / alterations, at its absolute discretion, without any liability whatsoever.

DOWNTOWN DUBAI

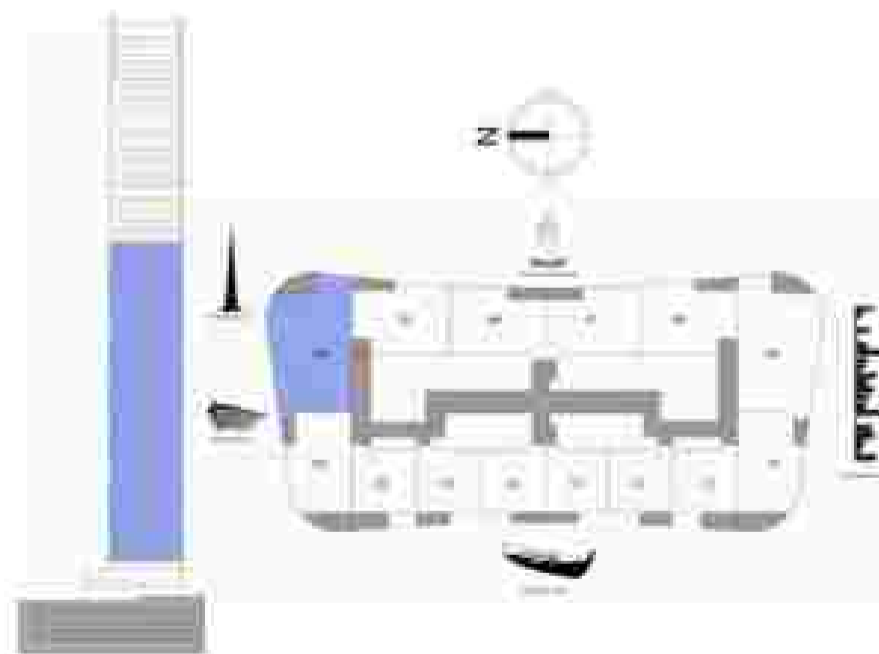
GRANDE

LEVEL 4-52

3 BEDROOM

UNIT 4

SUITE AREA	1756.67 SQ.FT.	163.29 SQ.M.
BALCONY AREA	104.73 SQ.FT.	9.73 SQ.M.
TOTAL AREA	1861.40 SQ.FT.	172.93 SQ.M.



DOWNTOWN
DUBAI

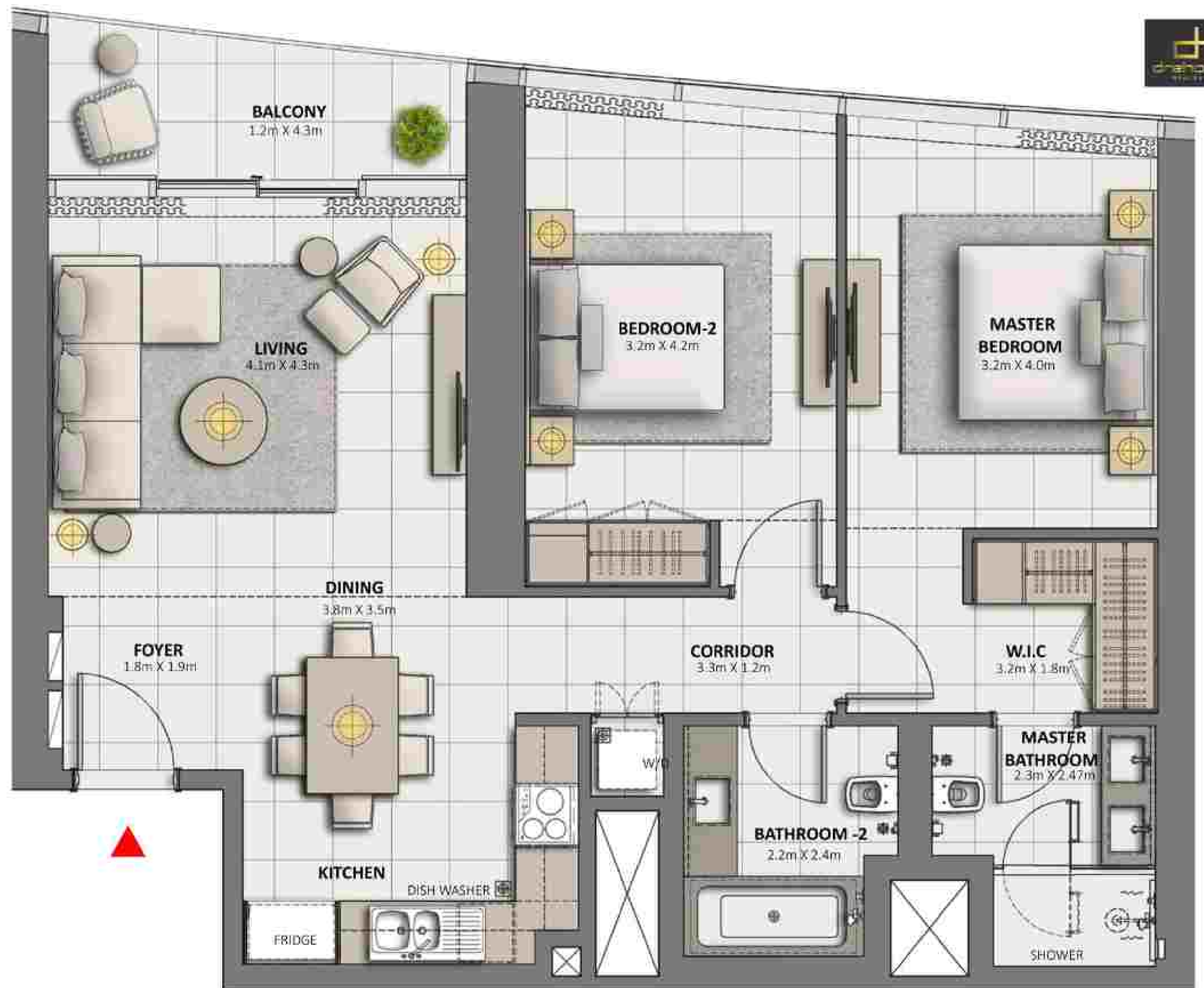
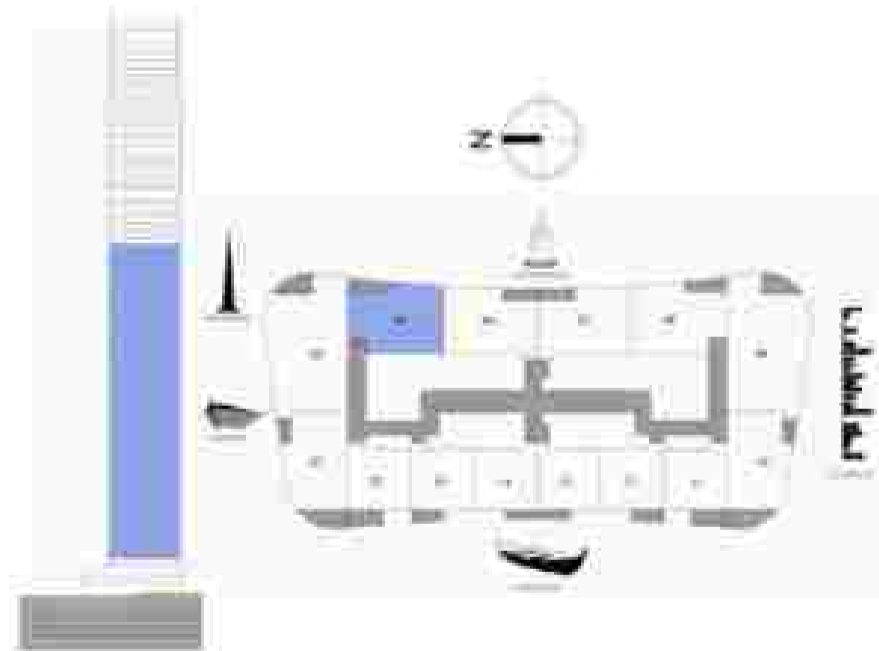
GRANDE

LEVEL 4-52

2 BEDROOM

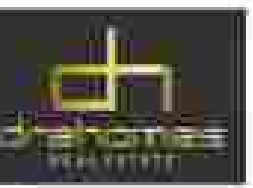
UNIT 5

SUITE AREA:	1124.29 SQ.FT.	104.45 SQ.M.
BALCONY AREA:	67.60 SQ.FT.	6.28 SQ.M.
TOTAL AREA:	1191.89 SQ.FT.	110.73 SQ.M.



FLOOR PLAN 1: All dimensions are in imperial and metric, and measured from finish to finish excluding construction tolerances. 2. All materials, dimensions, and drawings are approximate only. 3. Information is subject to change without notice, at developer's absolute discretion. 4. Actual area may vary from the stated area. 5. Drawings not to scale. 6. All images used are for illustrative purposes only and do not represent the actual size, features, specifications, fittings, and furnishings. 7. The developer reserves the right to make revisions / alterations, at its absolute discretion, without any liability whatsoever.

DOWNTOWN DUBAI



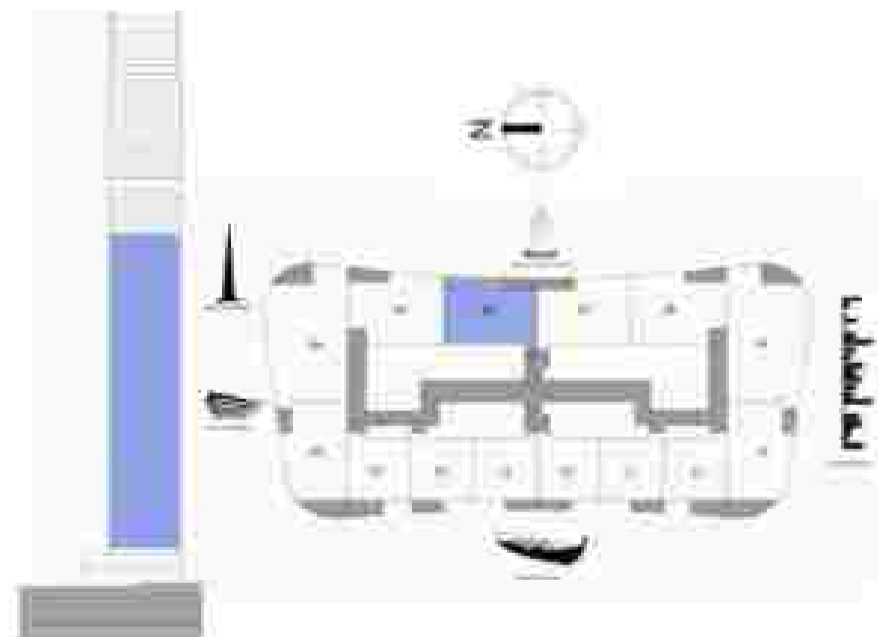
GRANDE

LEVEL 4-52

2 BEDROOM

UNIT 6

SUITE AREA	1071.98 SQ.FT.	99.59 SQ.M.
BALCONY AREA	67.12 SQ.FT.	6.19 SQ.M.
TOTAL AREA	1137.10 SQ.FT.	105.64 SQ.M.



FLOOR PLAN 1. All dimensions are in imperial and metric, and measured from finish to finish excluding construction tolerances. 2. All materials, dimensions, and drawings are approximate only. 3. Information is subject to change without notice, at developer's absolute discretion. 4. Actual area may vary from the stated area. 5. Drawings not to scale. 6. All images used are for illustrative purposes only and do not represent the actual size, features, specifications, fittings, and furnishings. 7. The developer reserves the right to make revisions / alterations, at its absolute discretion, without any liability whatsoever.

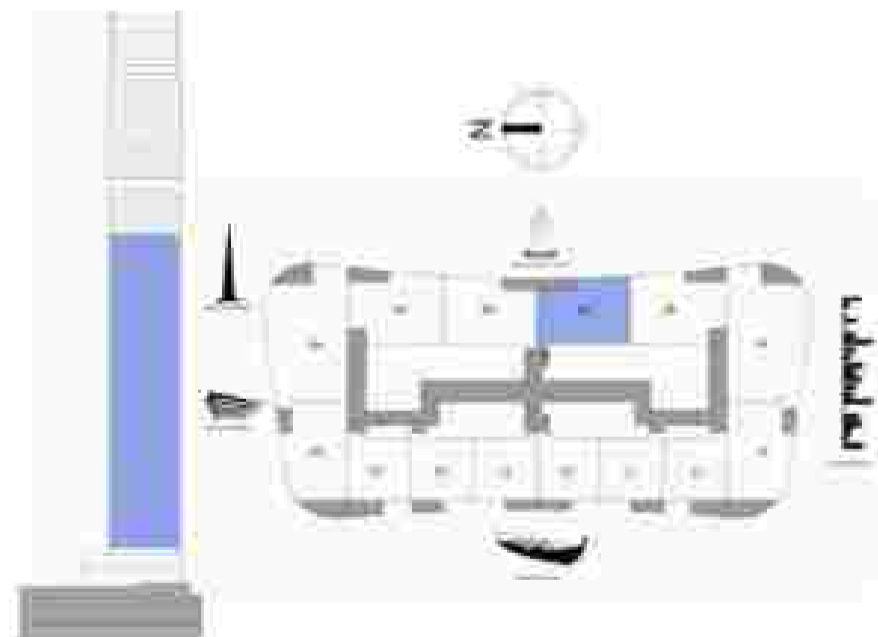
GRANDE

LEVEL 4-52

2 BEDROOM

UNIT 7

SUITE AREA	1071.98 SQ.FT.	99.59 SQ.M.
BALCONY AREA	67/12 SQ.FT.	6.19 SQ.M.
TOTAL AREA	1137.10 SQ.FT.	105.64 SQ.M.



FLOOR PLAN 1. All dimensions are in imperial and metric, and measured from finish to finish excluding construction tolerances. 2. All materials, dimensions, and drawings are approximate only. 3. Information is subject to change without notice, at developer's absolute discretion. 4. Actual area may vary from the stated area. 5. Drawings not to scale. 6. All images used are for illustrative purposes only and do not represent the actual size, features, specifications, fittings, and furnishings. 7. The developer reserves the right to make revisions / alterations, at its absolute discretion, without any liability whatsoever.

DOWNTOWN
DUBAI

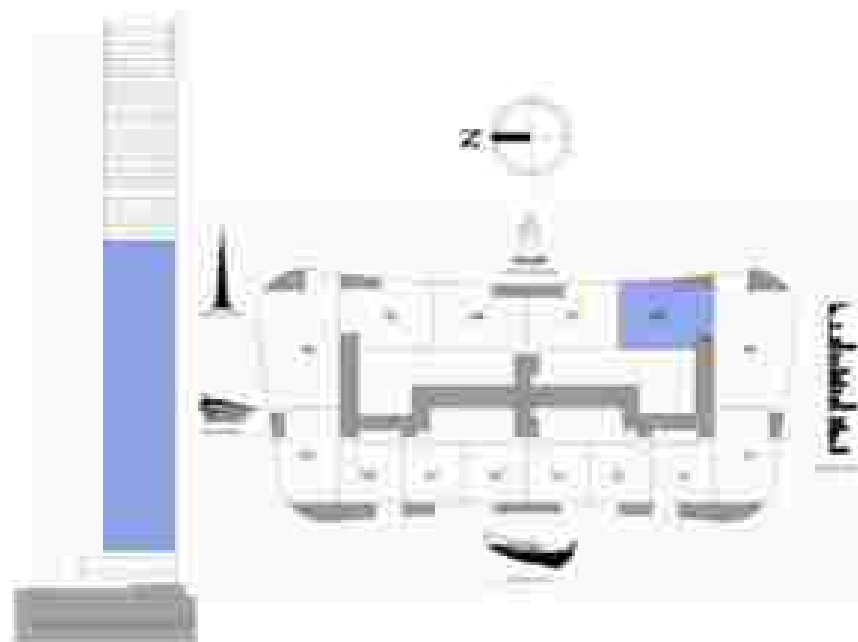
GRANDE

LEVEL 4-52

2 BEDROOM

UNIT 8

SUITE AREA	1129.29 SQ.FT.	104.45 SQ.M.
BALCONY AREA	67.60 SQ.FT.	6.28 SQ.M.
TOTAL AREA	1196.89 SQ.FT.	110.73 SQ.M.



FLOOR PLAN 1. All dimensions are in imperial and metric, and measured from finish to finish excluding construction tolerances. 2. All materials, dimensions, and drawings are approximate only. 3. Information is subject to change without notice, at developer's absolute discretion. 4. Actual area may vary from the stated area. 5. Drawings not to scale. 6. All images used are for illustrative purposes only and do not represent the actual size, features, specifications, fittings, and furnishings. 7. The developer reserves the right to make revisions / alterations, at its absolute discretion, without any liability whatsoever.

DOWNTOWN DUBAI

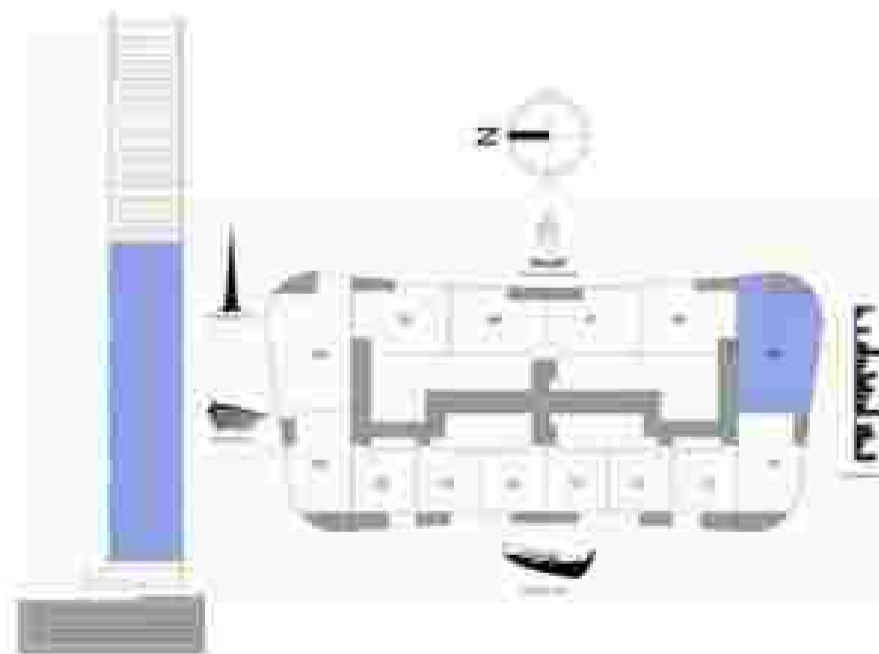
GRANDE

LEVEL 4-52

3 BEDROOM

UNIT 9

SUITE AREA	1756.67 SQ.FT.	161.29 SQ.M.
BALCONY AREA	104.73 SQ.FT.	9.73 SQ.M.
TOTAL AREA	1861.40 SQ.FT.	172.03 SQ.M.



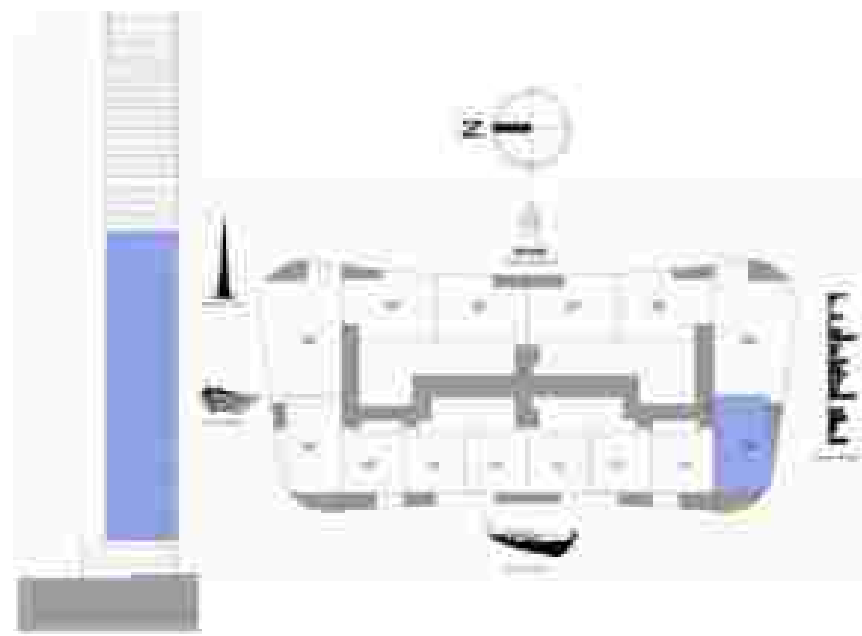
GRANDE

LEVEL 4-52

2 BEDROOM

UNIT 10

NET AREA	1783.28 SQ.FT.	164.64 SQ.M.
BALCONY AREA	161.29 SQ.FT.	15.08 SQ.M.
TOTAL AREA	1245.17 SQ.FT.	115.61 SQ.M.



FLOOR PLAN 1. All dimensions are in imperial and metric, and measured from finish to finish excluding construction tolerances. 2. All materials, dimensions, and drawings are approximate only. 3. Information is subject to change without notice, at developer's absolute discretion. 4. Actual area may vary from the stated area. 5. Drawings not to scale. 6. All images used are for illustrative purposes only and do not represent the actual size, features, specifications, fittings, and furnishings. 7. The developer reserves the right to make revisions / alterations, at its absolute discretion, without any liability whatsoever.

DOWNTOWN DUBAI

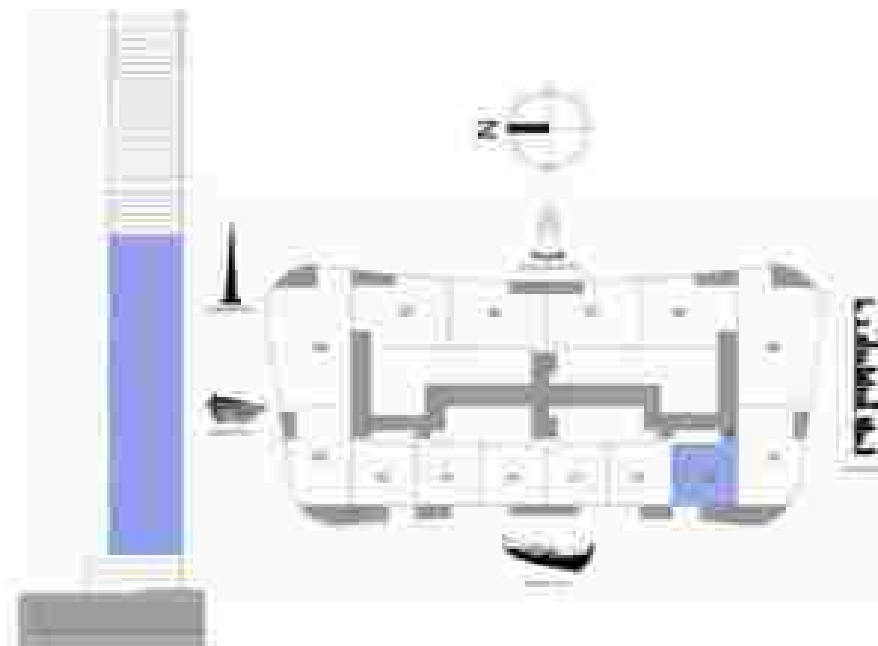
GRANDE

LEVEL 4-52

1 BEDROOM

UNIT 11

SUITE AREA	725.49 SQ.FT.	67.49 SQ.M.
BALCONY AREA	86.22 SQ.FT.	8.01 SQ.M.
TOTAL AREA	811.71 SQ.FT.	75.41 SQ.M.



DOWNTOWN DUBAI

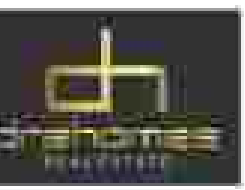
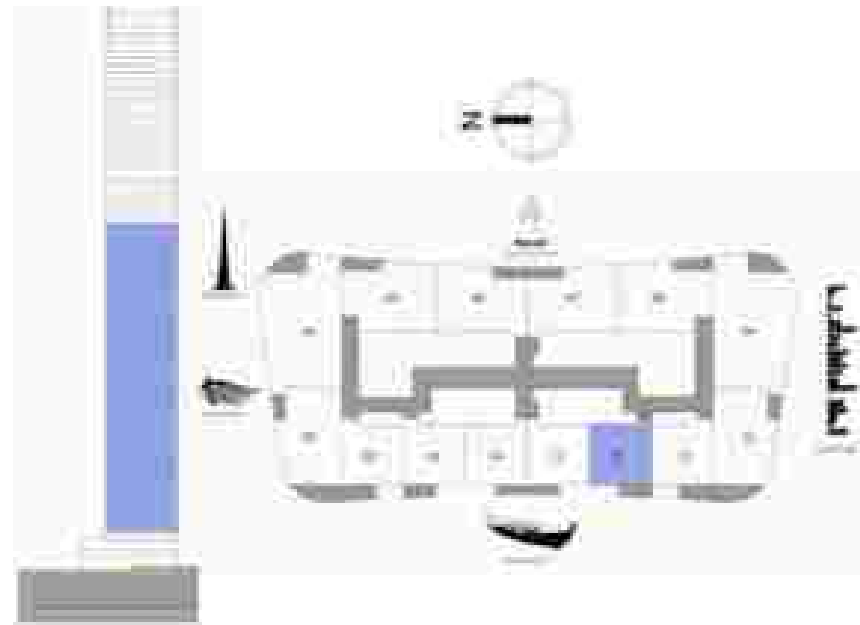
GRANDE

LEVEL 4-52

1 BEDROOM

UNIT 12

SUITE AREA	721.18 SQ.FT.	67.0 SQ.M.
BALCONY AREA	61.18 SQ.FT.	5.67 SQ.M.
TOTAL AREA	782.36 SQ.FT.	72.67 SQ.M.



DOWNTOWN DUBAI

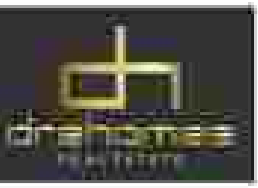
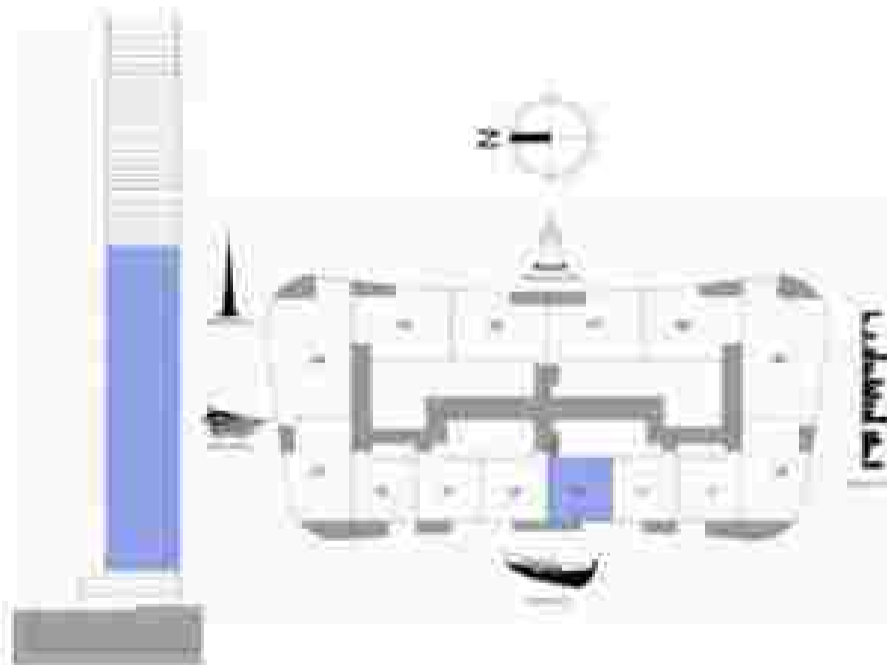
GRANDE

LEVEL 4-52

1 BEDROOM

UNIT 13

SUITE AREA	721.11 SQ.FT.	67.0 SQ.M.
BALCONY AREA	44.13 SQ.FT.	4.10 SQ.M.
TOTAL AREA	765.24 SQ.FT.	71.10 SQ.M.



FLOOR PLAN 1: All dimensions are in imperial and metric, and measured from finish to finish excluding construction tolerances. 2. All materials, dimensions, and drawings are approximate only. 3. Information is subject to change without notice, at developer's absolute discretion. 4. Actual area may vary from the stated area. 5. Drawings not to scale. 6. All images used are for illustrative purposes only and do not represent the actual size, features, specifications, fittings, and furnishings. 7. The developer reserves the right to make revisions / alterations, at its absolute discretion, without any liability whatsoever.

DOWNTOWN DUBAI

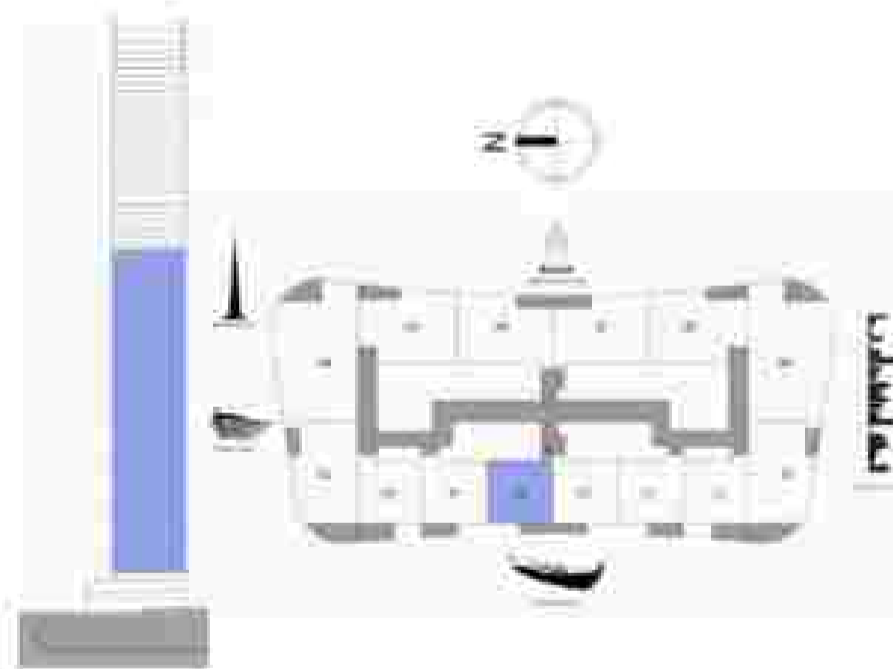
GRANDE

LEVEL 4-52

1 BEDROOM

UNIT 14

SUITE AREA	721.10 SQ.FT.	67.0 SQ.M.
BALCONY AREA	44.33 SQ.FT.	4.10 SQ.M.
TOTAL AREA	765.43 SQ.FT.	71.10 SQ.M.



FLOOR PLAN 1. All dimensions are in imperial and metric, and measured from finish to finish excluding construction tolerances. 2. All materials, dimensions, and drawings are approximate only. 3. Information is subject to change without notice, at developer's absolute discretion. 4. Actual area may vary from the stated area. 5. Drawings not to scale. 6. All images used are for illustrative purposes only and do not represent the actual size, features, specifications, fittings, and furnishings. 7. The developer reserves the right to make revisions / alterations, at its absolute discretion, without any liability whatsoever.

DOWNTOWN
DUBAI

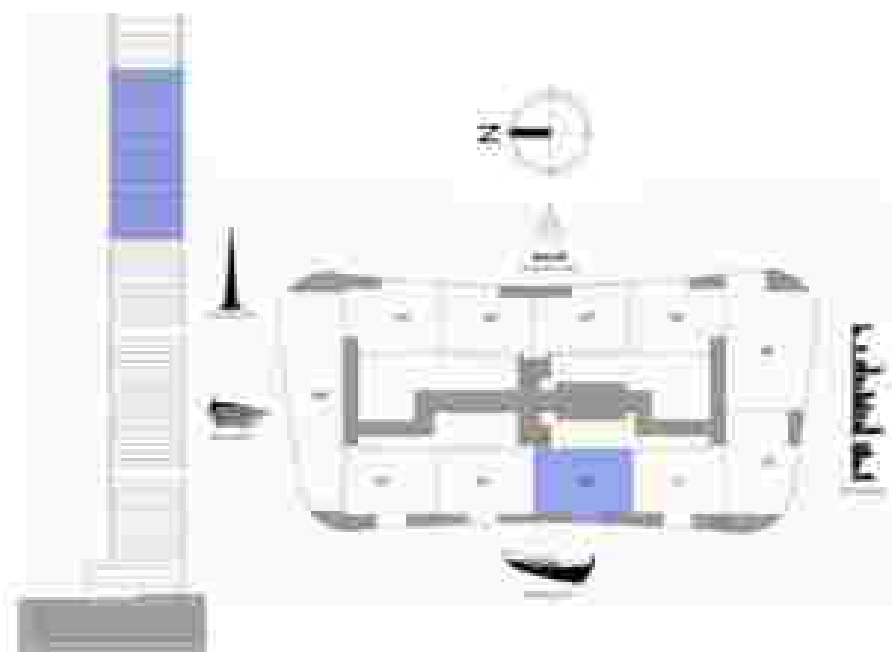
GRANDE

LEVEL 54-69

2 BEDROOM

UNIT 1

SUITE AREA	1150.73 SQ.FT.	107.66 SQ.M.
BALCONY AREA	44.89 SQ.FT.	4.17 SQ.M.
TOTAL AREA	1201.62 SQ.FT.	111.82 SQ.M.



FLOOR PLAN 1: All dimensions are in imperial and metric, and measured from finish to finish excluding construction tolerances. 2. All materials, dimensions, and drawings are approximate only. 3. Information is subject to change without notice, at developer's absolute discretion. 4. Actual area may vary from the stated area. 5. Drawings not to scale. 6. All images used are for illustrative purposes only and do not represent the actual size, features, specifications, fittings, and furnishings. 7. The developer reserves the right to make revisions / alterations, at its absolute discretion, without any liability whatsoever.

**DOWNTOWN
DUBAI**

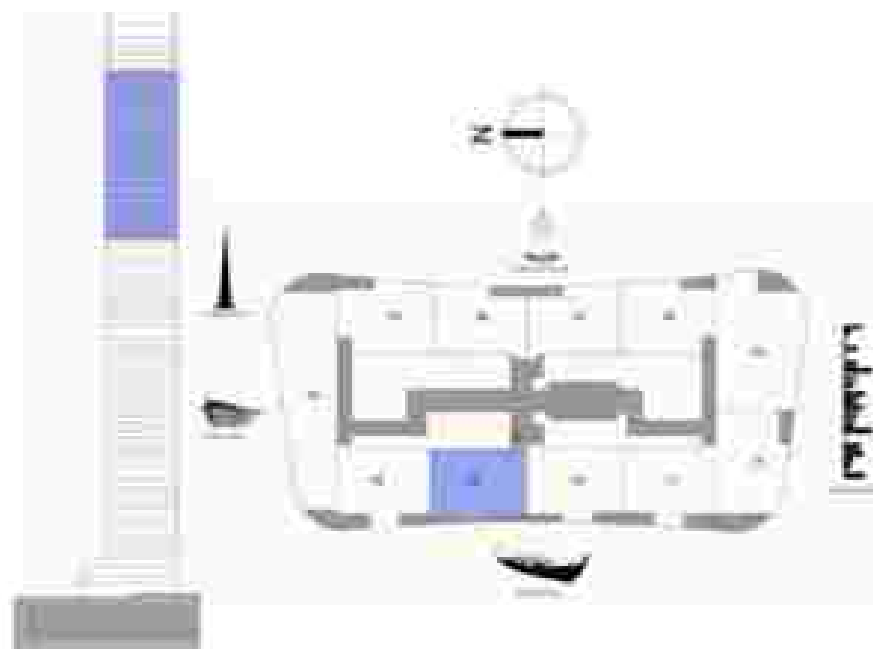
GRANDE

LEVEL 54-59

2 BEDROOM

UNIT 2

SUITE AREA	1158.21 SQ.FT.	107.65 SQ.M.
BALCONY AREA	44.89 SQ.FT.	4.17 SQ.M.
TOTAL AREA	1203.12 SQ.FT.	111.82 SQ.M.



FLOOR PLAN 1: All dimensions are in imperial and metric, and measured from finish to finish excluding construction tolerances. 2. All materials, dimensions, and drawings are approximate only. 3. Information is subject to change without notice, at developer's absolute discretion. 4. Actual area may vary from the stated area. 5. Drawings not to scale. 6. All images used are for illustrative purposes only and do not represent the actual size, features, specifications, fittings, and furnishings. 7. The developer reserves the right to make revisions / alterations, at its absolute discretion, without any liability whatsoever.

DOWNTOWN
DUBAI

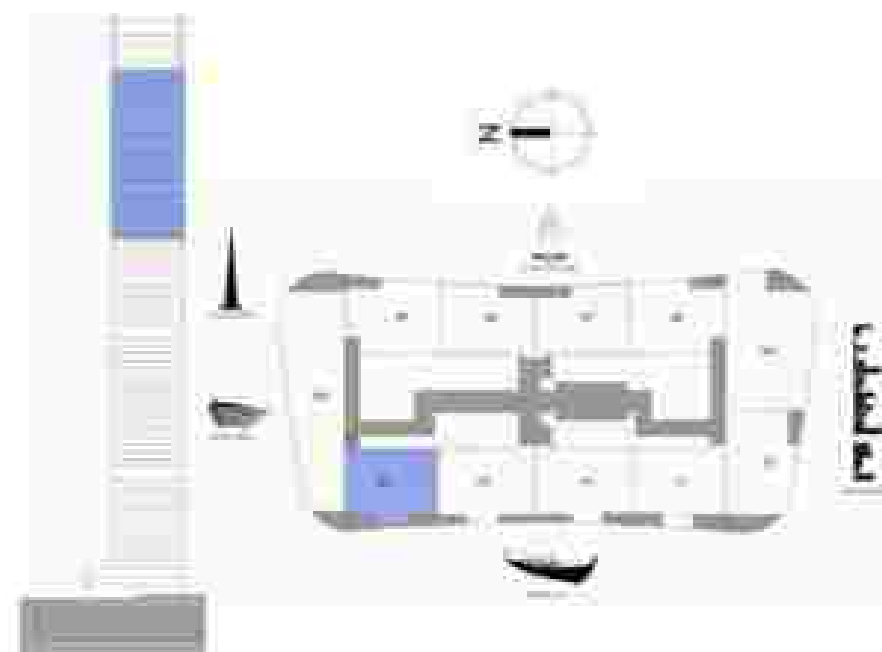
GRANDE

LEVEL 54-69

2 BEDROOM

UNIT 3

SUITE AREA	1154.11 SQ.FT.	107.22 SQ.M.
BALCONY AREA	85.16 SQ.FT.	7.93 SQ.M.
TOTAL AREA	1239.27 SQ.FT.	115.15 SQ.M.



FLOOR PLAN 1: All dimensions are in imperial and metric, and measured from finish to finish excluding construction tolerances. 2. All materials, dimensions, and drawings are approximate only. 3. Information is subject to change without notice, at developer's absolute discretion. 4. Actual area may vary from the stated area. 5. Drawings not to scale. 6. All images used are for illustrative purposes only and do not represent the actual size, features, specifications, fittings, and furnishings. 7. The developer reserves the right to make revisions / alterations, at its absolute discretion, without any liability whatsoever.

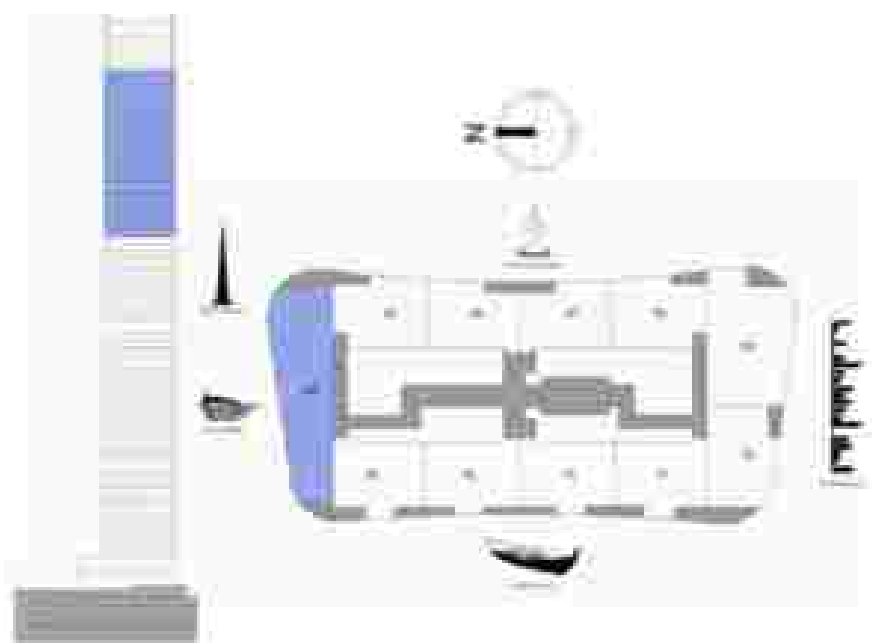
GRANDE

LEVEL 54-69

3 BEDROOM

UNIT 4

SUITE AREA	1965.81 SQ.FT.	182.63 SQ.M.
BALCONY AREA	182.38 SQ.FT.	16.99 SQ.M.
TOTAL AREA	2148.09 SQ.FT.	199.62 SQ.M.



FLOOR PLAN 1: All dimensions are in imperial and metric, and measured from finish to finish excluding construction tolerances. 2. All materials, dimensions, and drawings are approximate only. 3. Information is subject to change without notice, at developer's absolute discretion. 4. Actual area may vary from the stated area. 5. Drawings not to scale. 6. All images used are for illustrative purposes only and do not represent the actual size, features, specifications, fittings, and furnishings. 7. The developer reserves the right to make revisions / alterations, at its absolute discretion, without any liability whatsoever.

DOWNTOWN DUBAI

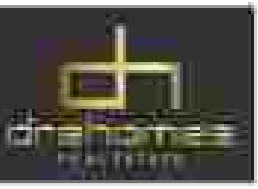
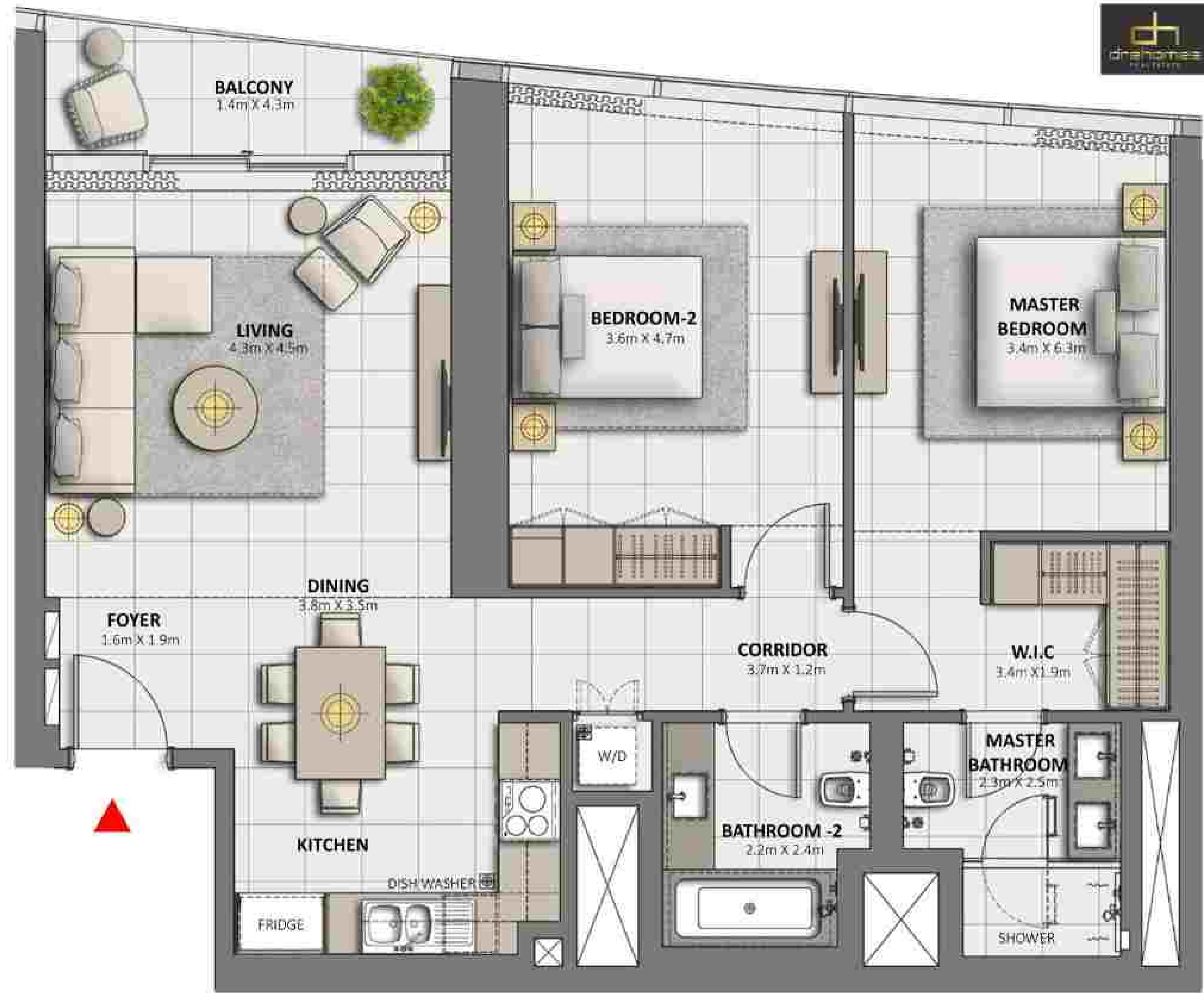
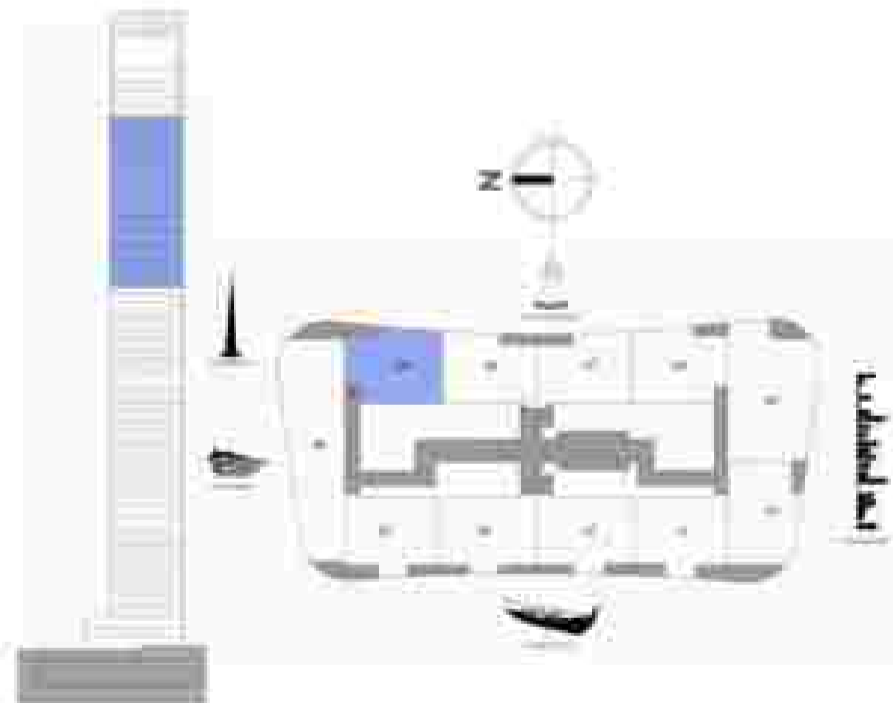
GRANDE

LEVEL 54-69

2 BEDROOM

UNIT 5

SUITE AREA	1126.55 SQ.FT.	104.76 SQ.M.
BALCONY AREA	67.60 SQ.FT.	6.28 SQ.M.
TOTAL AREA	1194.15 SQ.FT.	111.04 SQ.M.



FLOOR PLAN 1. All dimensions are in imperial and metric, and measured from finish to finish excluding construction tolerances. 2. All materials, dimensions, and drawings are approximate only. 3. Information is subject to change without notice, at developer's absolute discretion. 4. Actual area may vary from the stated area. 5. Drawings not to scale. 6. All images used are for illustrative purposes only and do not represent the actual size, features, specifications, fittings, and furnishings. 7. The developer reserves the right to make revisions / alterations, at its absolute discretion, without any liability whatsoever.

DOWNTOWN
DUBAI

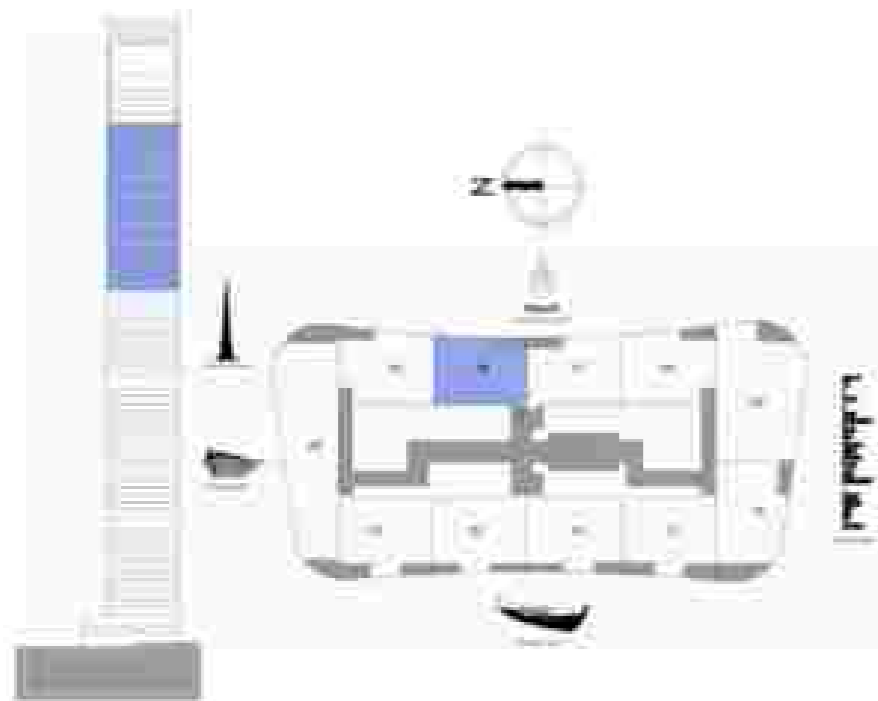
GRANDE

LEVEL 54-69

2 BEDROOM

UNIT 6

SUITE AREA	1063.37 SQ.FT.	98.79 SQ.M.
BALCONY AREA	65.12 SQ.FT.	6.05 SQ.M.
TOTAL AREA	1128.49 SQ.FT.	104.84 SQ.M.



FLOOR PLAN 1: All dimensions are in imperial and metric, and measured from finish to finish excluding construction tolerances. 2. All materials, dimensions, and drawings are approximate only. 3. Information is subject to change without notice, at developer's absolute discretion. 4. Actual area may vary from the stated area. 5. Drawings not to scale. 6. All images used are for illustrative purposes only and do not represent the actual size, features, specifications, fittings, and furnishings. 7. The developer reserves the right to make revisions / alterations, at its absolute discretion, without any liability whatsoever.

DOWNTOWN
DUBAI

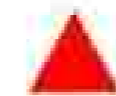
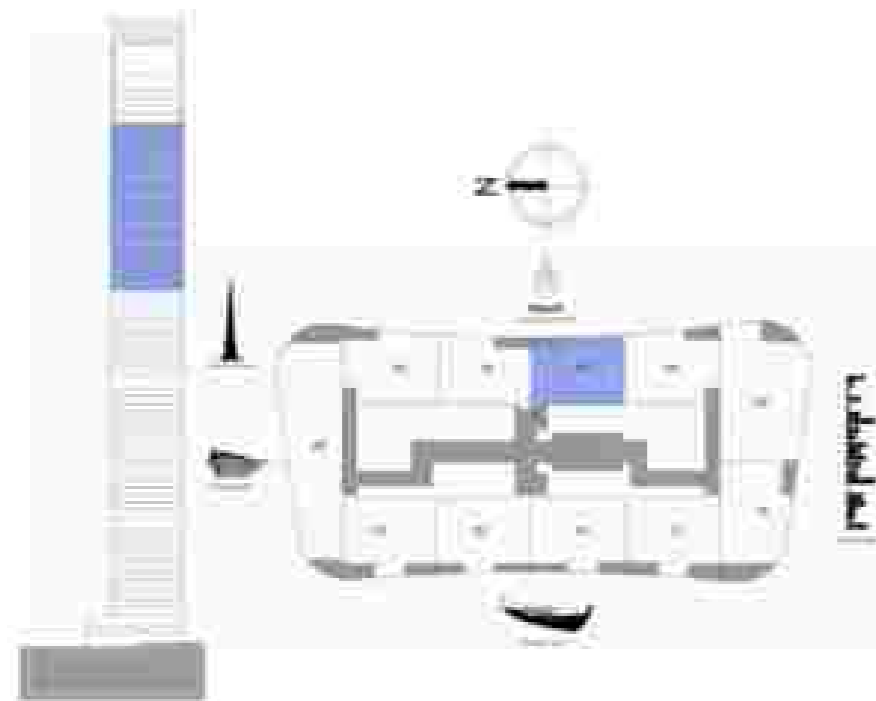
GRANDE

LEVEL 54-69

2 BEDROOM

UNIT 7

SUITE AREA	1063.37 SQ.FT.	98.79 SQ.M.
BALCONY AREA	65.12 SQ.FT.	6.05 SQ.M.
TOTAL AREA	1128.49 SQ.FT.	104.84 SQ.M.



DOWNTOWN
DUBAI

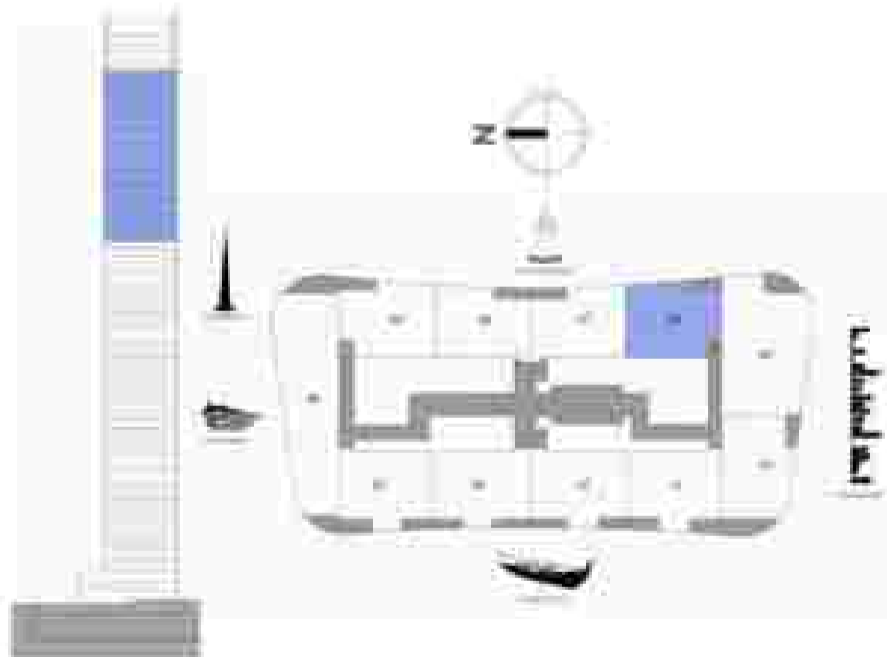
GRANDE

LEVEL 54-69

2 BEDROOM

UNIT 8

SUITE AREA	1126.55 SQ.FT.	104.76 SQ.M.
BALCONY AREA	67.60 SQ.FT.	6.28 SQ.M.
TOTAL AREA	1194.15 SQ.FT.	111.04 SQ.M.



FLOOR PLAN 1. All dimensions are in imperial and metric, and measured from finish to finish excluding construction tolerances. 2. All materials, dimensions, and drawings are approximate only. 3. Information is subject to change without notice, at developer's absolute discretion. 4. Actual area may vary from the stated area. 5. Drawings not to scale. 6. All images used are for illustrative purposes only and do not represent the actual size, features, specifications, fittings, and furnishings. 7. The developer reserves the right to make revisions / alterations, at its absolute discretion, without any liability whatsoever.

DOWNTOWN DUBAI

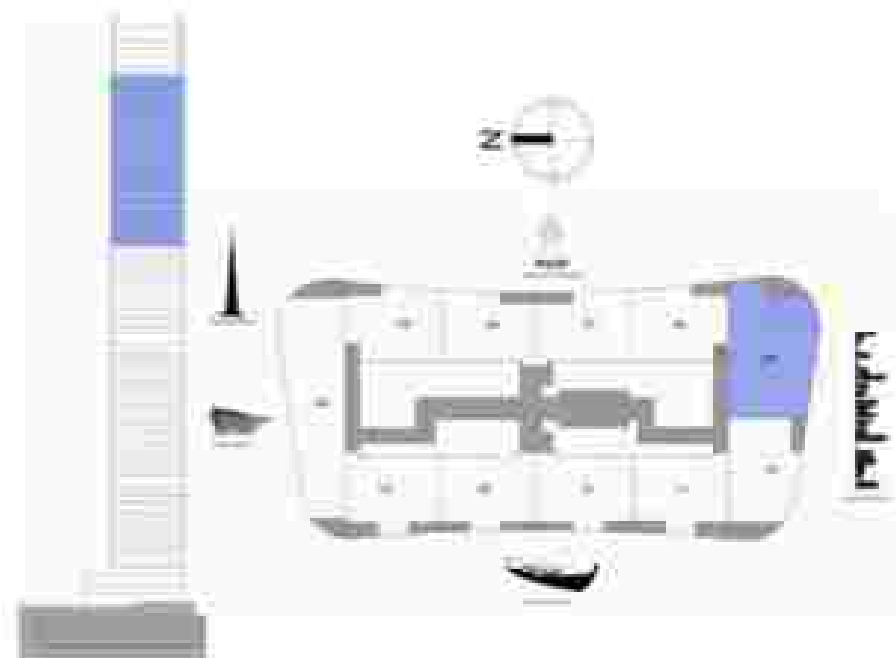
GRANDE

LEVEL 54-69

3 BEDROOM

UNIT 9

SUITE AREA	1821.68 SQ.FT.	169.24 SQ.M.
BALCONY AREA	104.73 SQ.FT.	9.73 SQ.M.
TOTAL AREA	1926.41 SQ.FT.	178.97 SQ.M.



FLOOR PLAN 1. All dimensions are in imperial and metric, and measured from finish to finish excluding construction tolerances. 2. All materials, dimensions, and drawings are approximate only. 3. Information is subject to change without notice, at developer's absolute discretion. 4. Actual area may vary from the stated area. 5. Drawings not to scale. 6. All images used are for illustrative purposes only and do not represent the actual size, features, specifications, fittings, and furnishings. 7. The developer reserves the right to make revisions / alterations, at its absolute discretion, without any liability whatsoever.

DOWNTOWN
DUBAI

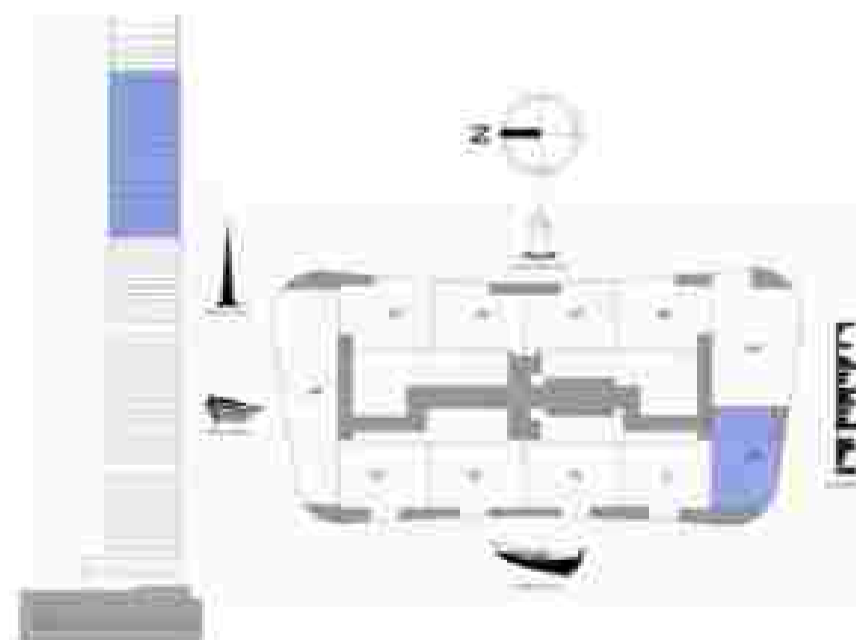
GRANDE

LEVEL 54-69

2 BEDROOM

UNIT 10

SUITE AREA	1121.92 SQ.FT.	104.23 SQ.M.
BALCONY AREA	167.06 SQ.FT.	15.52 SQ.M.
TOTAL AREA	1288.98 SQ.FT.	119.75 SQ.M.



FLOOR PLAN 1. All dimensions are in imperial and metric, and measured from finish to finish excluding construction tolerances. 2. All materials, dimensions, and drawings are approximate only. 3. Information is subject to change without notice, at developer's absolute discretion. 4. Actual area may vary from the stated area. 5. Drawings not to scale. 6. All images used are for illustrative purposes only and do not represent the actual size, features, specifications, fittings, and furnishings. 7. The developer reserves the right to make revisions / alterations, at its absolute discretion, without any liability whatsoever.

DOWNTOWN DUBAI

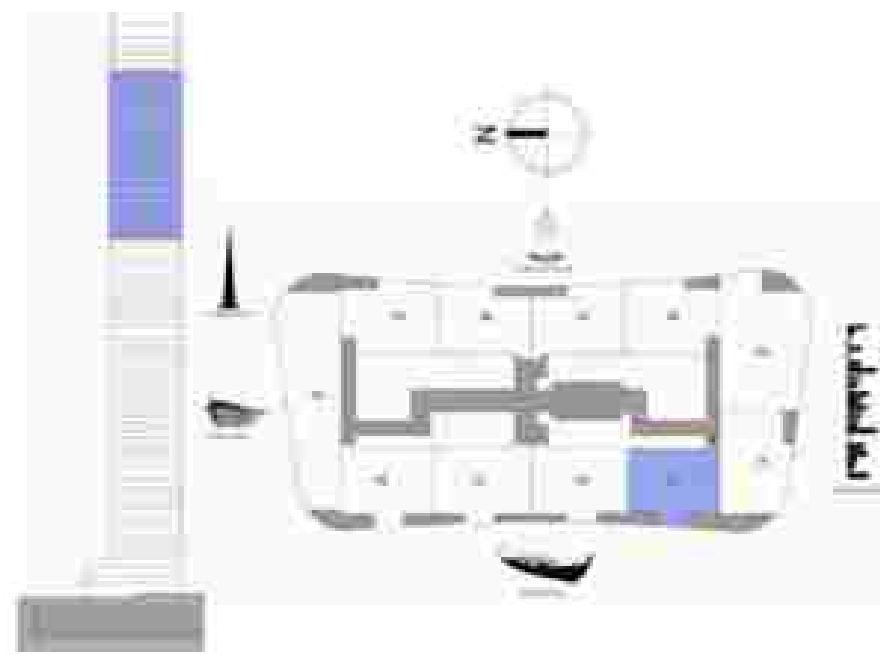
GRANDE

LEVEL 54-69

2 BEDROOM

UNIT 11

SUITE AREA	1134.11 SQ.FT.	107.22 SQ.M.
BALCONY AREA	89.36 SQ.FT.	7.93 SQ.M.
TOTAL AREA	1223.47 SQ.FT.	115.15 SQ.M.



FLOOR PLAN 1: All dimensions are in imperial and metric, and measured from finish to finish excluding construction tolerances. 2. All materials, dimensions, and drawings are approximate only. 3. Information is subject to change without notice, at developer's absolute discretion. 4. Actual area may vary from the stated area. 5. Drawings not to scale. 6. All images used are for illustrative purposes only and do not represent the actual size, features, specifications, fittings, and furnishings. 7. The developer reserves the right to make revisions / alterations, at its absolute discretion, without any liability whatsoever.



CONTACT US

Toll Free : 800 37373

Hotline : +971 52 754 3244

Email : sales@drehomes.com

Visit Us For More Info:-

<https://drehomes.com/property/emaar-grande-downtown-dubai/>

