

CREEK BEACH

SUMMER

FLOOR PLANS

EMAAR

BUILDING 1

EMAAR

DUBAI CREEK
HARBOUR

SUMMER AT
CREEK BEACH

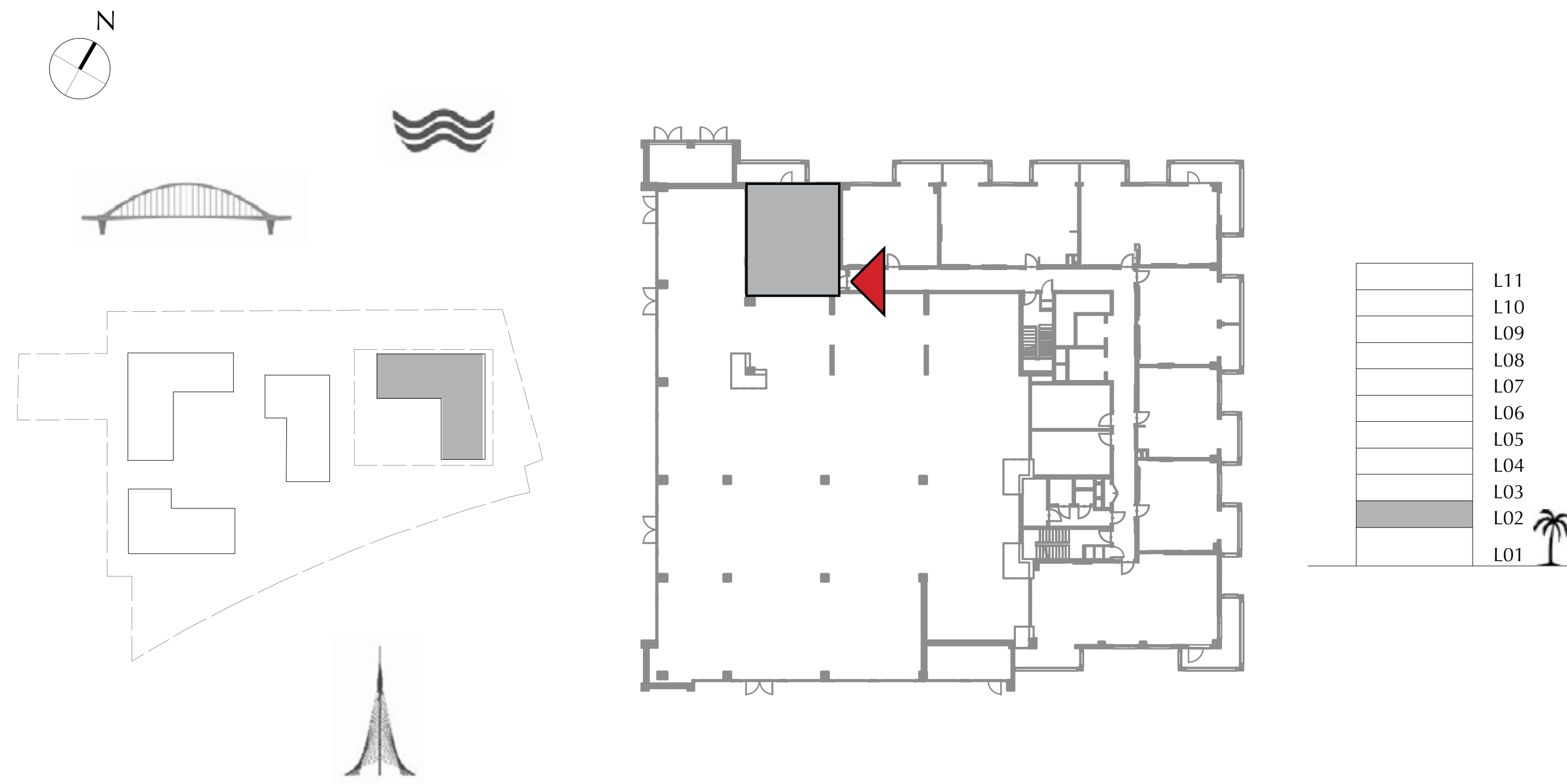
BUILDING 1

LEVEL 2

UNIT 201

1 BEDROOM

APARTMENT AREA	74.61 SQ.M.	803.10 SQ.FT.
BALCONY AREA	11.70 SQ.M.	125.94 SQ.FT.
TOTAL AREA	86.31 SQ.M.	929.04 SQ.FT.



FLOOR PLAN 1. All dimensions are in imperial and metric, and measured from finish to finish excluding construction tolerances. 2. All materials, dimensions, and drawings are approximate only. 3. Information is subject to change without notice, at developer's absolute discretion. 4. Actual area may vary from the stated area. 5. Drawings not to scale. 6. All images used are for illustrative purposes only and do not represent the actual size, features, specifications, fittings, and furnishings. 7. The developer reserves the right to make revisions / alterations, at it's absolute discretion, without any liability whatsoever.

DUBAI CREEK
HARBOUR

SUMMER AT
CREEK BEACH

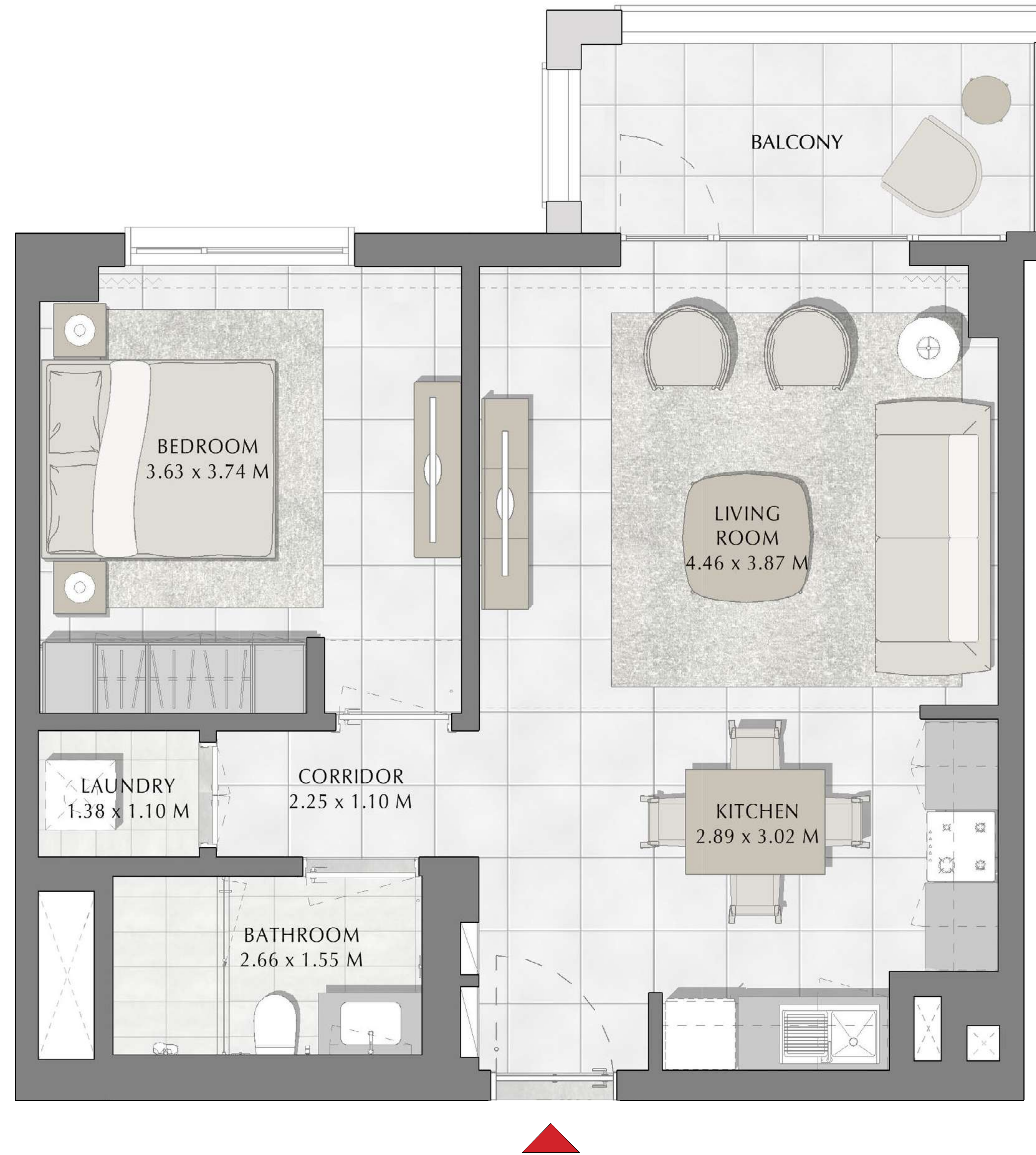
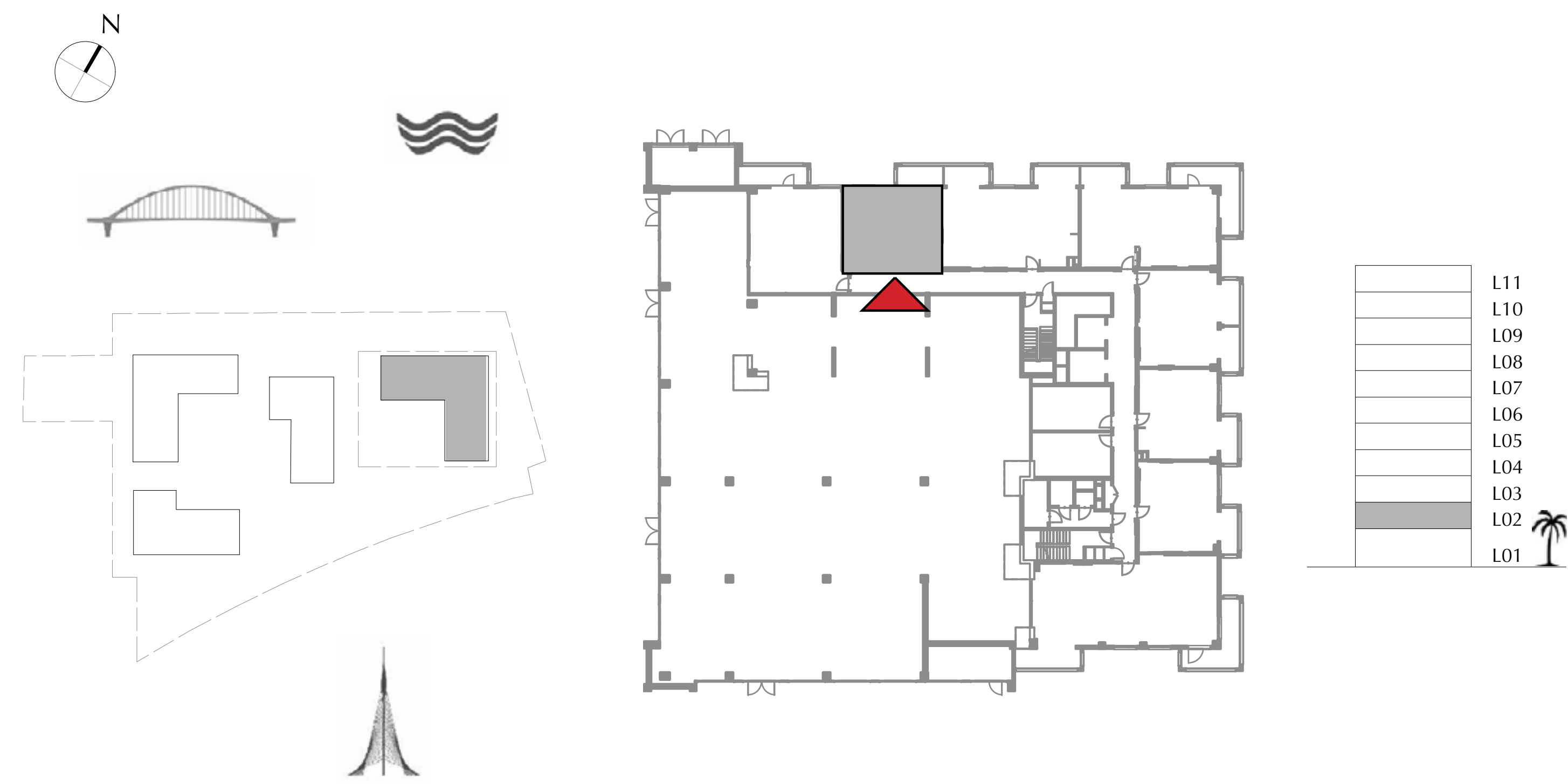
BUILDING 1

LEVEL 2

UNIT 202

1 BEDROOM

APARTMENT AREA	58.79 SQ.M.	632.81 SQ.FT.
BALCONY AREA	7.63 SQ.M.	82.13 SQ.FT.
TOTAL AREA	66.42 SQ.M.	714.94 SQ.FT.



FLOOR PLAN 1. All dimensions are in imperial and metric, and measured from finish to finish excluding construction tolerances. 2. All materials, dimensions, and drawings are approximate only. 3. Information is subject to change without notice, at developer's absolute discretion. 4. Actual area may vary from the stated area. 5. Drawings not to scale. 6. All images used are for illustrative purposes only and do not represent the actual size, features, specifications, fittings, and furnishings. 7. The developer reserves the right to make revisions / alterations, at it's absolute discretion, without any liability whatsoever.

DUBAI CREEK
HARBOUR

SUMMER AT
CREEK BEACH

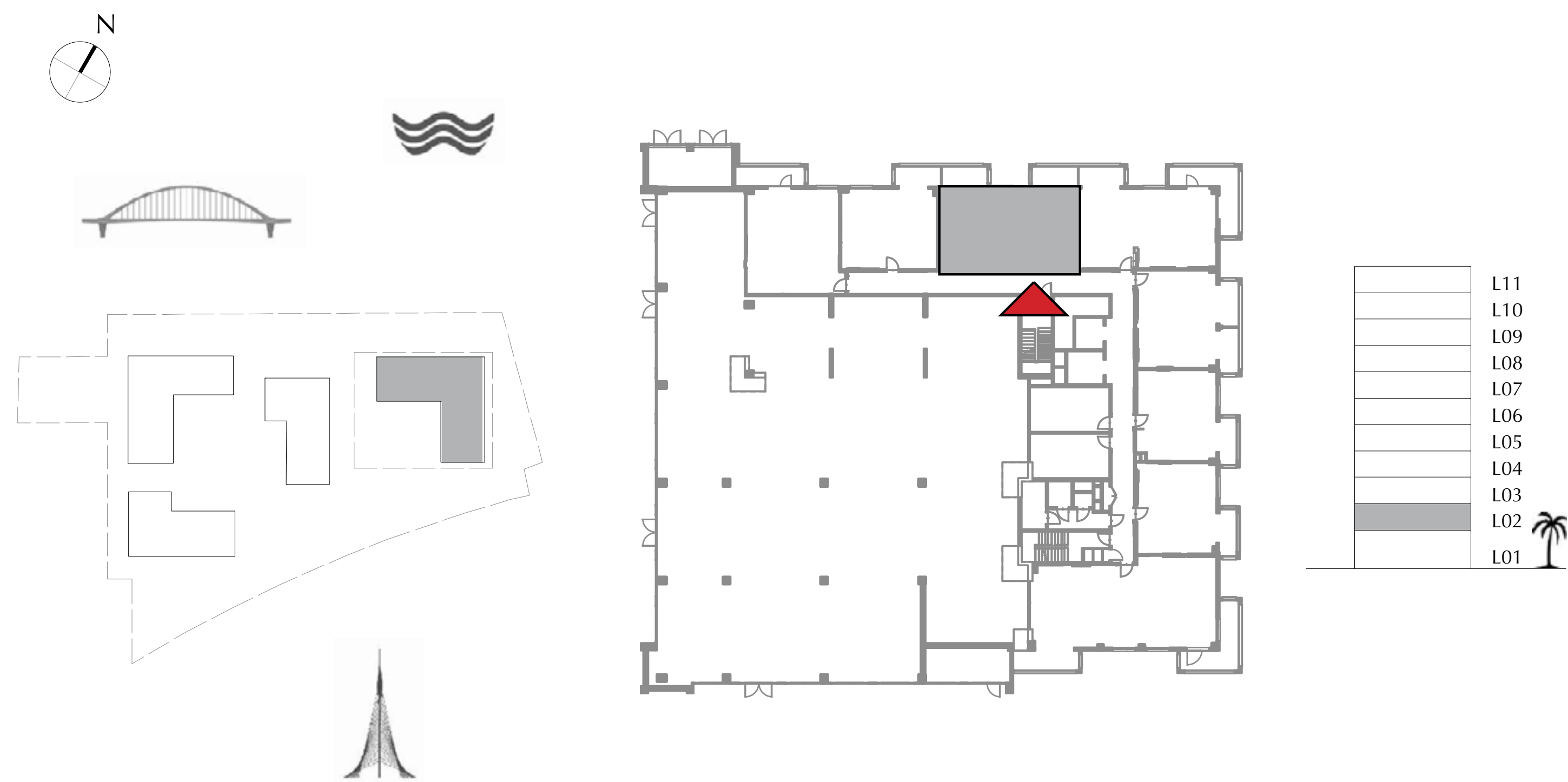
BUILDING 1

LEVEL 2

UNIT 203

2 BEDROOM

APARTMENT AREA	83.76 SQ.M.	901.59 SQ.FT.
BALCONY AREA	15.29 SQ.M.	164.58 SQ.FT.
TOTAL AREA	99.05 SQ.M.	1066.17 SQ.FT.



FLOOR PLAN 1. All dimensions are in imperial and metric, and measured from finish to finish excluding construction tolerances. 2. All materials, dimensions, and drawings are approximate only. 3. Information is subject to change without notice, at developer's absolute discretion. 4. Actual area may vary from the stated area. 5. Drawings not to scale. 6. All images used are for illustrative purposes only and do not represent the actual size, features, specifications, fittings, and furnishings. 7. The developer reserves the right to make revisions / alterations, at it's absolute discretion, without any liability whatsoever.