

TRIA

BY DEYAAR

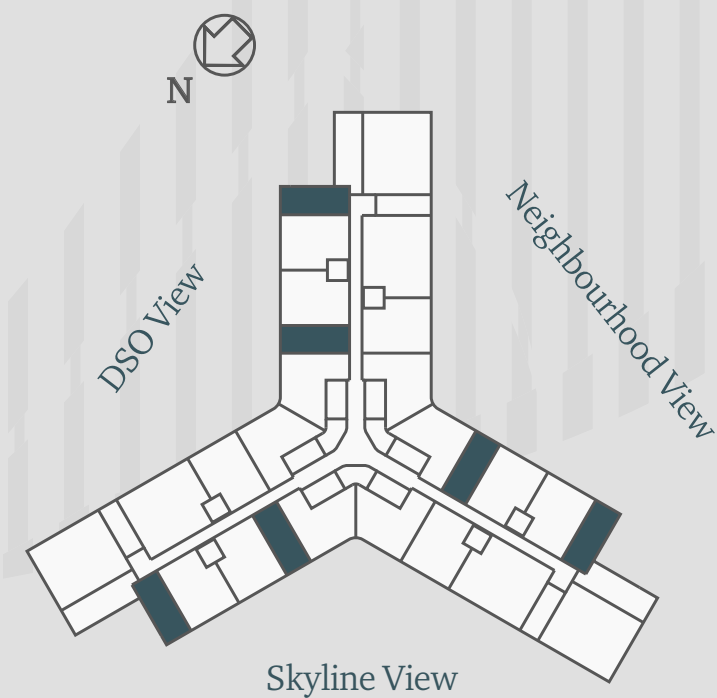




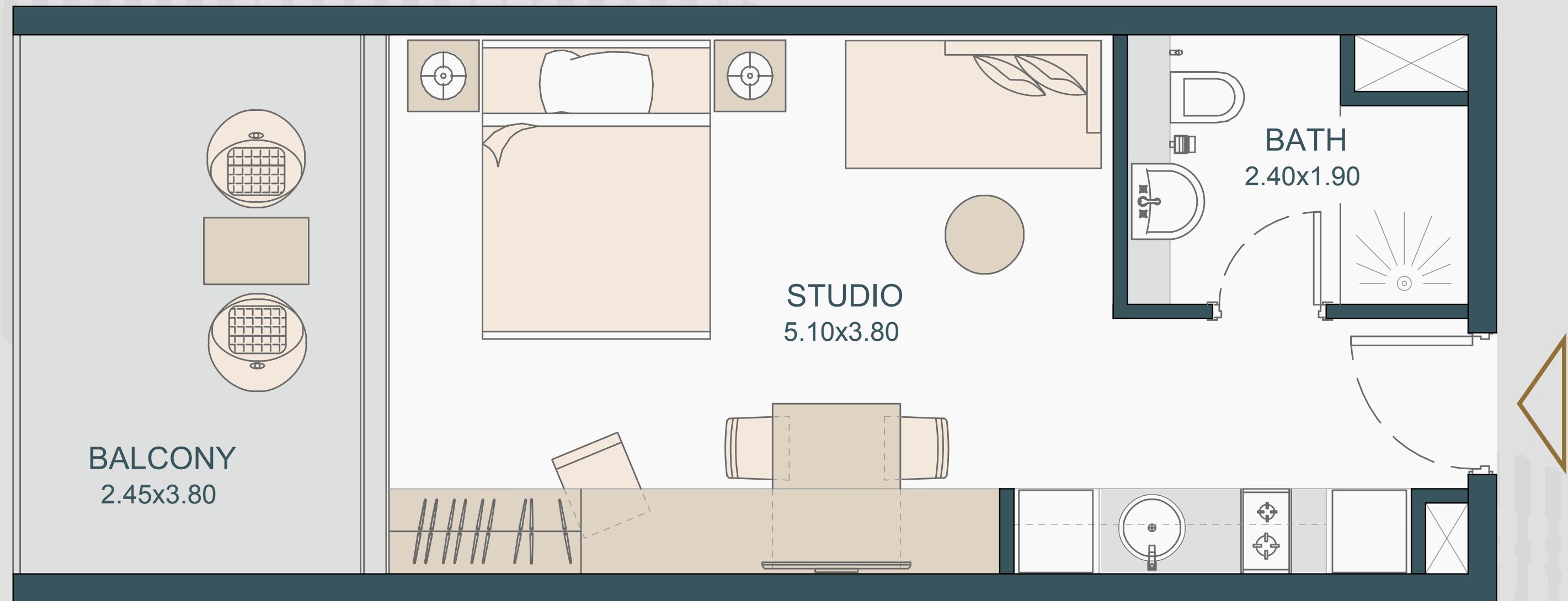
# STUDIO 440 SQ.FT.

## Type A

Internal Area: 333 Sq.Ft.  
Balcony Area: 107 Sq.Ft.  
Total: 440 Sq.Ft.



Available on 2nd to 21st floor



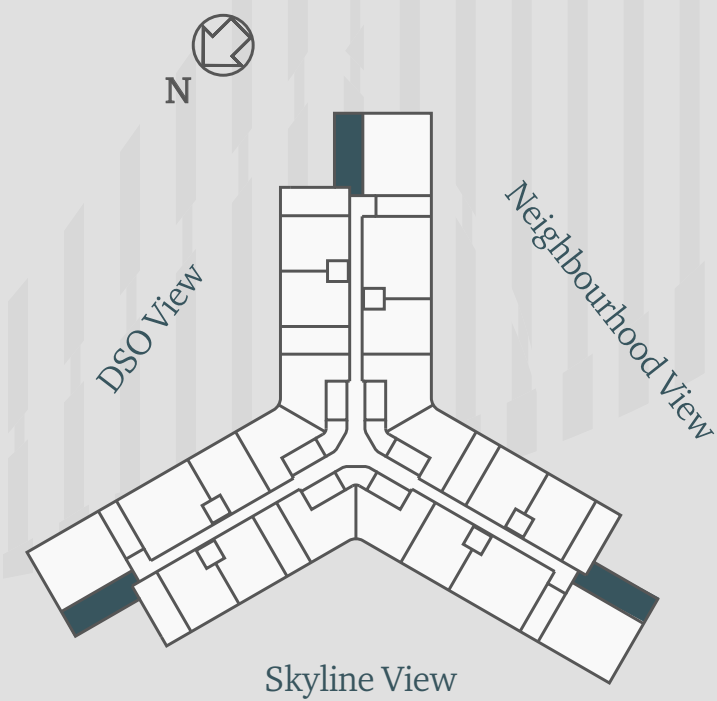
# STUDIO 485 SQ.FT.

## Type B

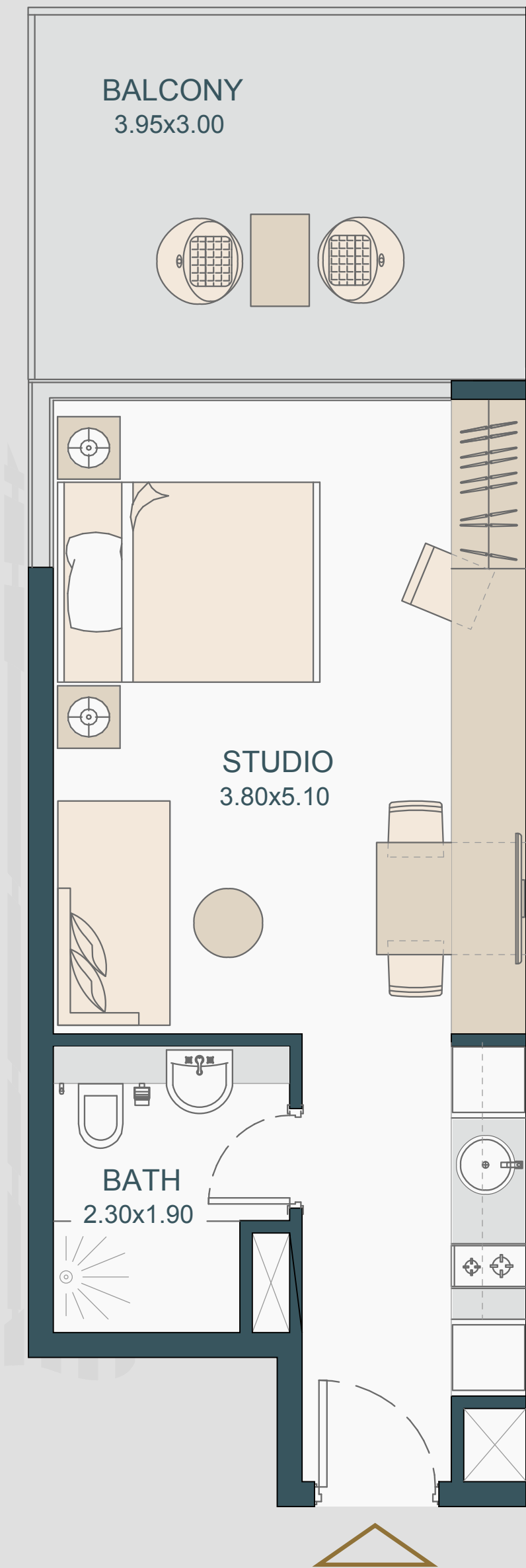
Internal Area: 353 Sq.Ft.

Balcony Area: 132 Sq.Ft.

Total: 485 Sq.Ft.



Available on 2nd to 21st floor

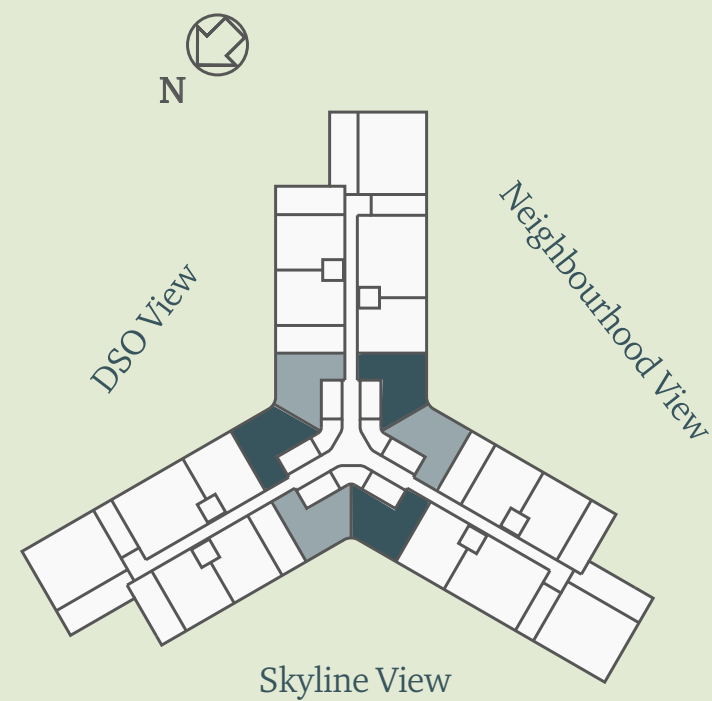


All the dimensions are in meter | Unit shown is typical, and actual Unit may vary in dimensions, areas, layout, material specification, orientation, and location | Unit Windows, Facade, Balcony door location, Fixtures, Kitchen Cabinets, Sanitary ware, and Wardrobes, including each of their location as shown in the plan is indicative and subject to revision by the Seller | All fixtures, fittings, goods, accessories, and furniture reflected/ displayed in this plan(s) are strictly illustrative and representational (not actual) in nature and are only for the purpose of illustrating /reflecting one of the possible layouts which the Purchaser could arrange after the Unit is handed over and do not form part of the Unit. No Furniture, goods, accessories are included in the sale.

# 1 BEDROOM 775 SQ.FT.

## Type A

Internal Area: 680 Sq.Ft.  
Balcony Area: 95 Sq.Ft.  
Total: 775 Sq.Ft.



Available on 2nd to 21st floor



All the dimensions are in meter | Unit shown is typical, and actual Unit may vary in dimensions, areas, layout, material specification, orientation, and location | Unit Windows, Facade, Balcony door location, Fixtures, Kitchen Cabinets, Sanitary ware, and Wardrobes, including each of their location as shown in the plan is indicative and subject to revision by the Seller | All fixtures, fittings, goods, accessories, and furniture reflected/ displayed in this plan(s) are strictly illustrative and representational (not actual) in nature and are only for the purpose of illustrating /reflecting one of the possible layouts which the Purchaser could arrange after the Unit is handed over and do not form part of the Unit. No Furniture, goods, accessories are included in the sale.

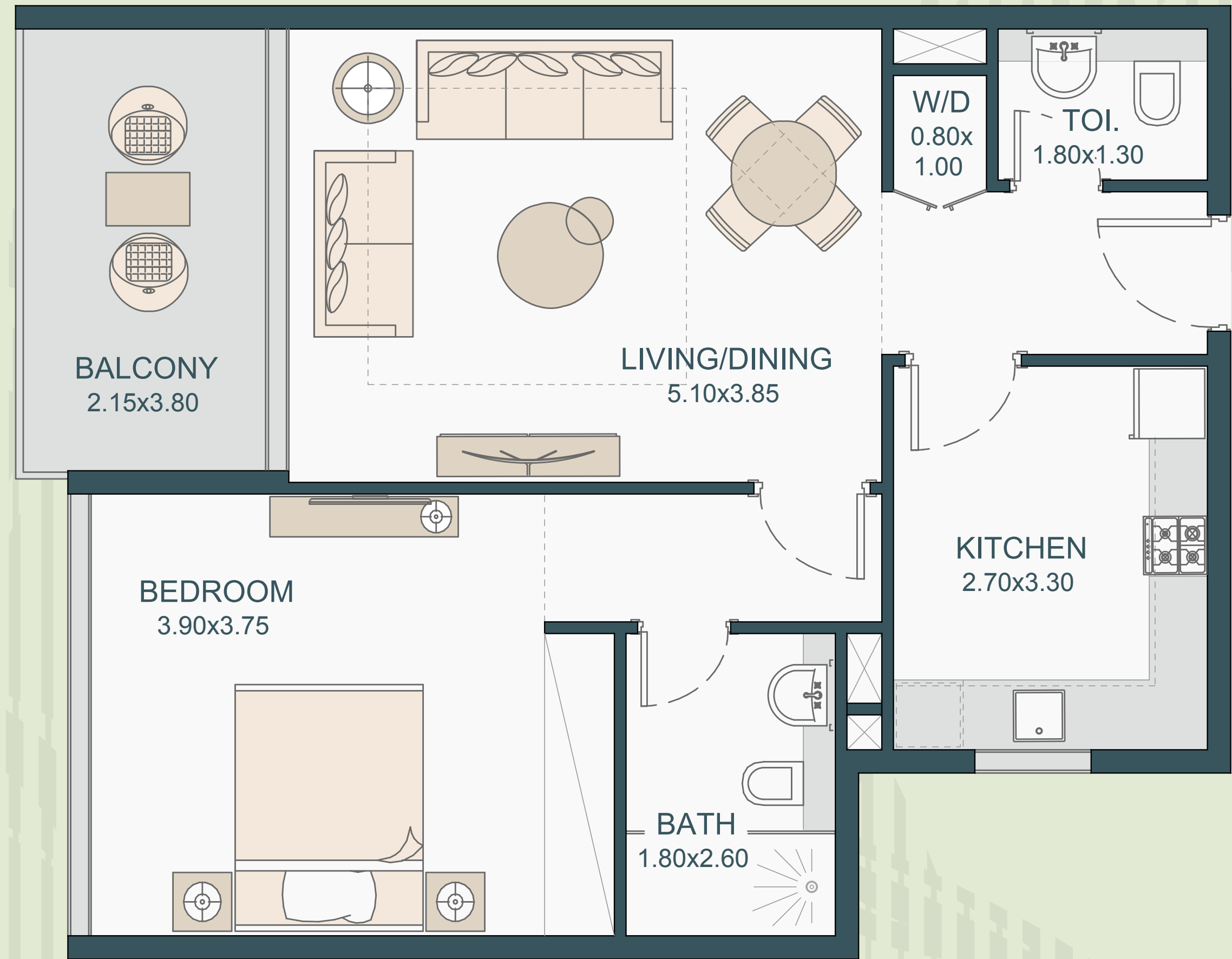
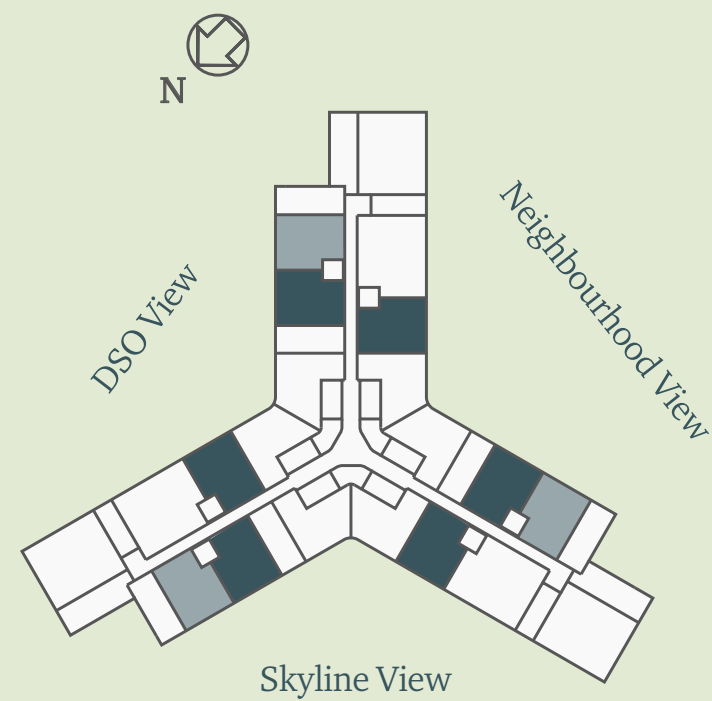
# 1 BEDROOM 805 SQ.FT.

## Type B

Internal Area: 711 Sq.Ft.

Balcony Area: 94 Sq.Ft.

Total: 805 Sq.Ft.



Available on 2nd to 21st floor

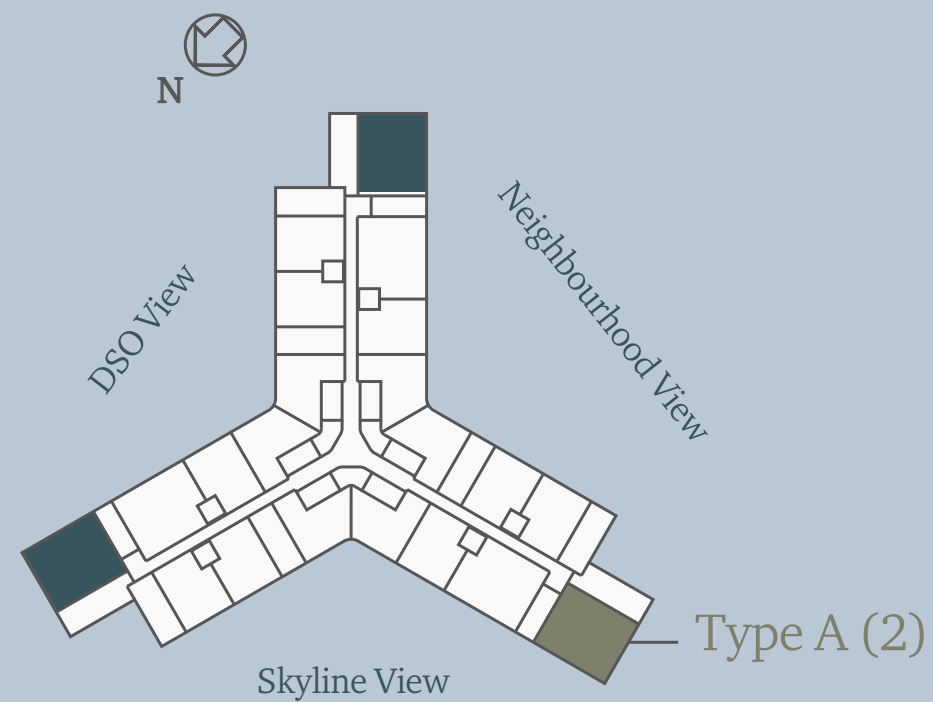
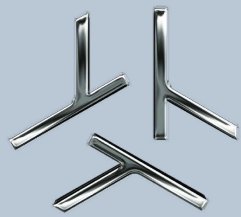
All the dimensions are in meter | Unit shown is typical, and actual Unit may vary in dimensions, areas, layout, material specification, orientation, and location | Unit Windows, Facade, Balcony door location, Fixtures, Kitchen Cabinets, Sanitary ware, and Wardrobes, including each of their location as shown in the plan is indicative and subject to revision by the Seller | All fixtures, fittings, goods, accessories, and furniture reflected/ displayed in this plan(s) are strictly illustrative and representational (not actual) in nature and are only for the purpose of illustrating /reflecting one of the possible layouts which the Purchaser could arrange after the Unit is handed over and do not form part of the Unit. No Furniture, goods, accessories are included in the sale.



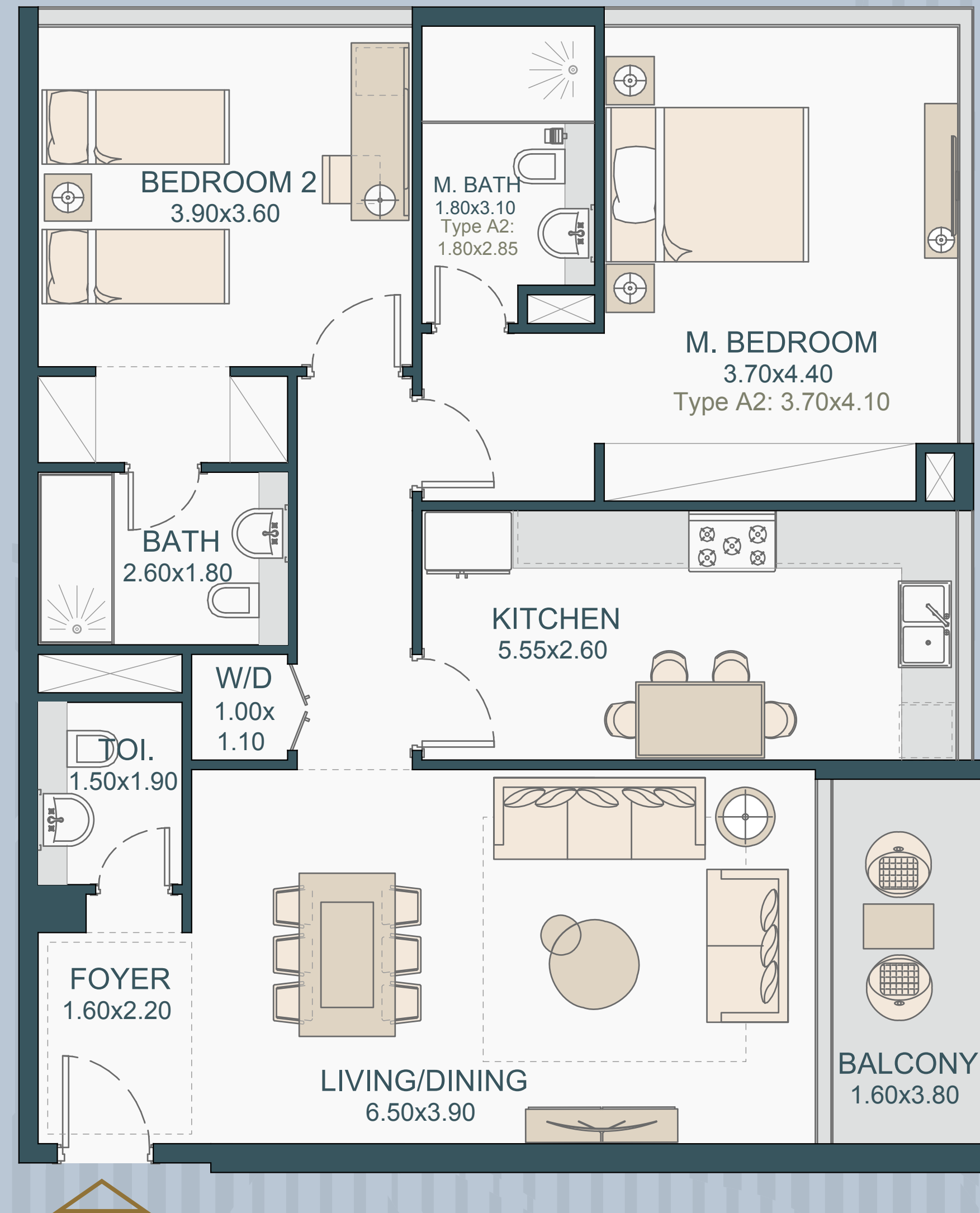
# 2 BEDROOM 1,255 SQ.FT.

## Type A

Internal Area: 1184 Sq.Ft.  
Balcony Area: 71 Sq.Ft.  
Total: 1255 Sq.Ft.



Available on 2nd to 21st floor

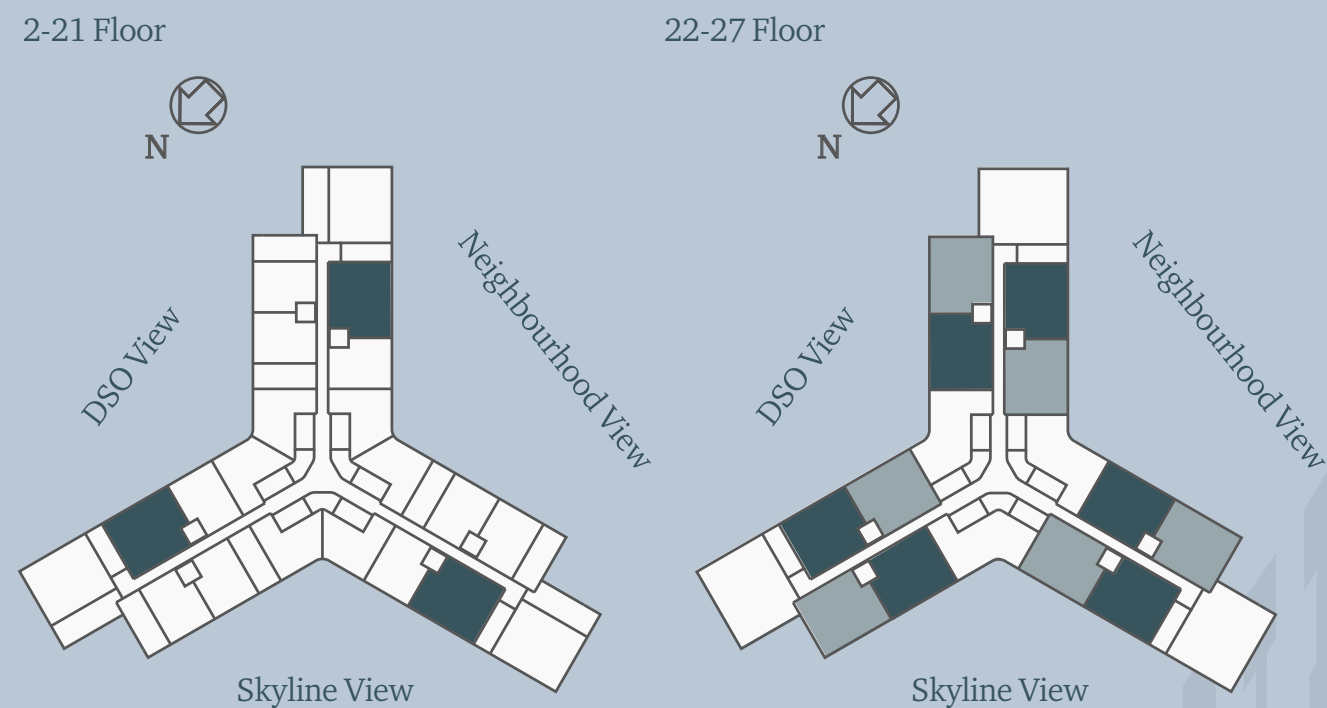
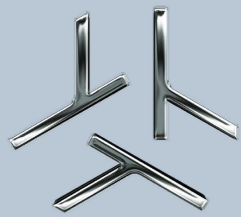


All the dimensions are in meter | Unit shown is typical, and actual Unit may vary in dimensions, areas, layout, material specification, orientation, and location | Unit Windows, Facade, Balcony door location, Fixtures, Kitchen Cabinets, Sanitary ware, and Wardrobes, including each of their location as shown in the plan is indicative and subject to revision by the Seller | All fixtures, fittings, goods, accessories, and furniture reflected/ displayed in this plan(s) are strictly illustrative and representational (not actual) in nature and are only for the purpose of illustrating /reflecting one of the possible layouts which the Purchaser could arrange after the Unit is handed over and do not form part of the Unit. No Furniture, goods, accessories are included in the sale.

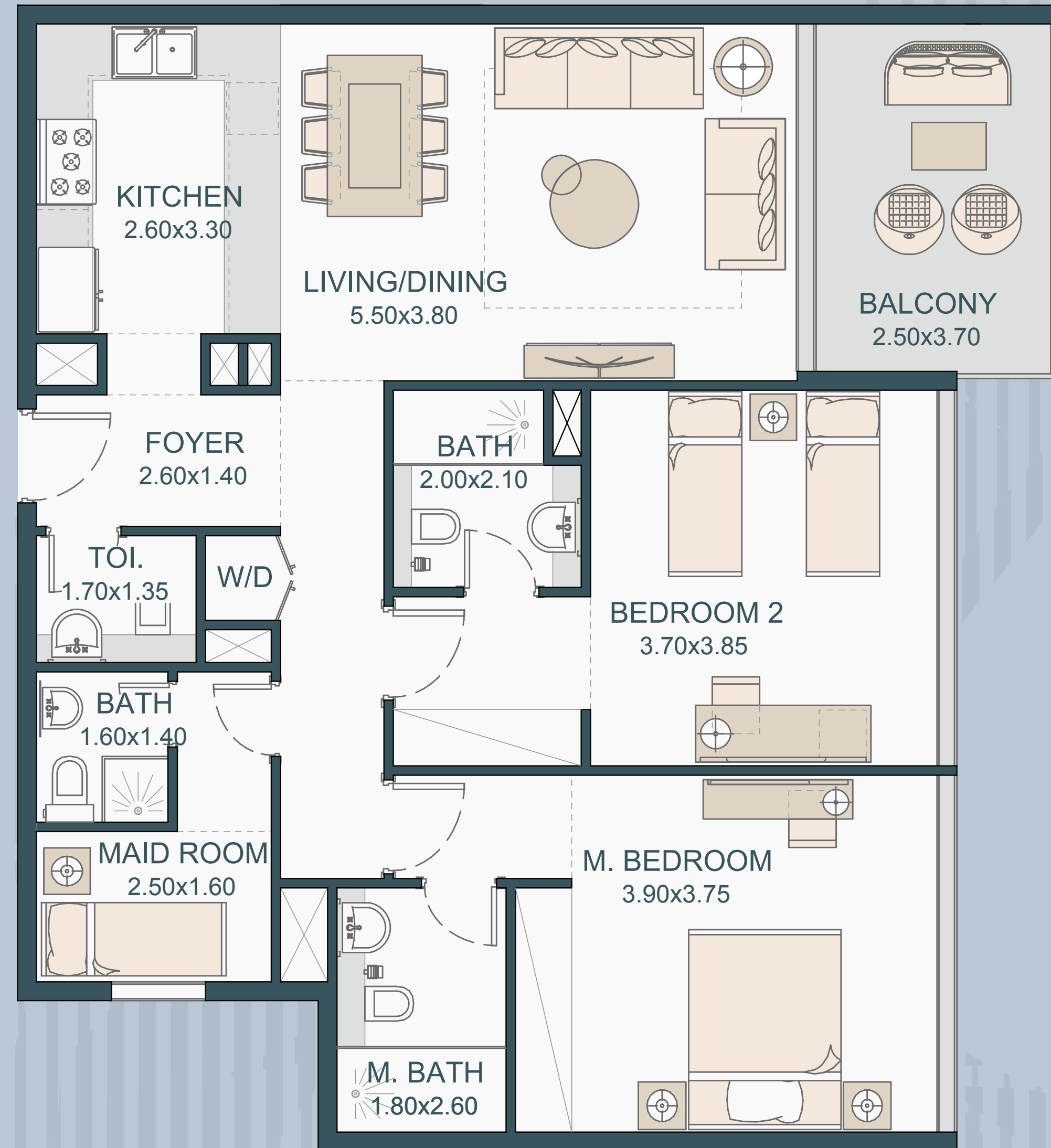
# 2 BEDROOM 1,245 SQ.FT.

## Type B

Internal Area: 1138 Sq.Ft.  
Balcony Area: 107 Sq.Ft.  
Total: 1245 Sq.Ft.



Available on 2nd to 27th floor



All the dimensions are in meter | Unit shown is typical, and actual Unit may vary in dimensions, areas, layout, material specification, orientation, and location | Unit Windows, Facade, Balcony door location, Fixtures, Kitchen Cabinets, Sanitary ware, and Wardrobes, including each of their location as shown in the plan is indicative and subject to revision by the Seller | All fixtures, fittings, goods, accessories, and furniture reflected/ displayed in this plan(s) are strictly illustrative and representational (not actual) in nature and are only for the purpose of illustrating /reflecting one of the possible layouts which the Purchaser could arrange after the Unit is handed over and do not form part of the Unit. No Furniture, goods, accessories are included in the sale.

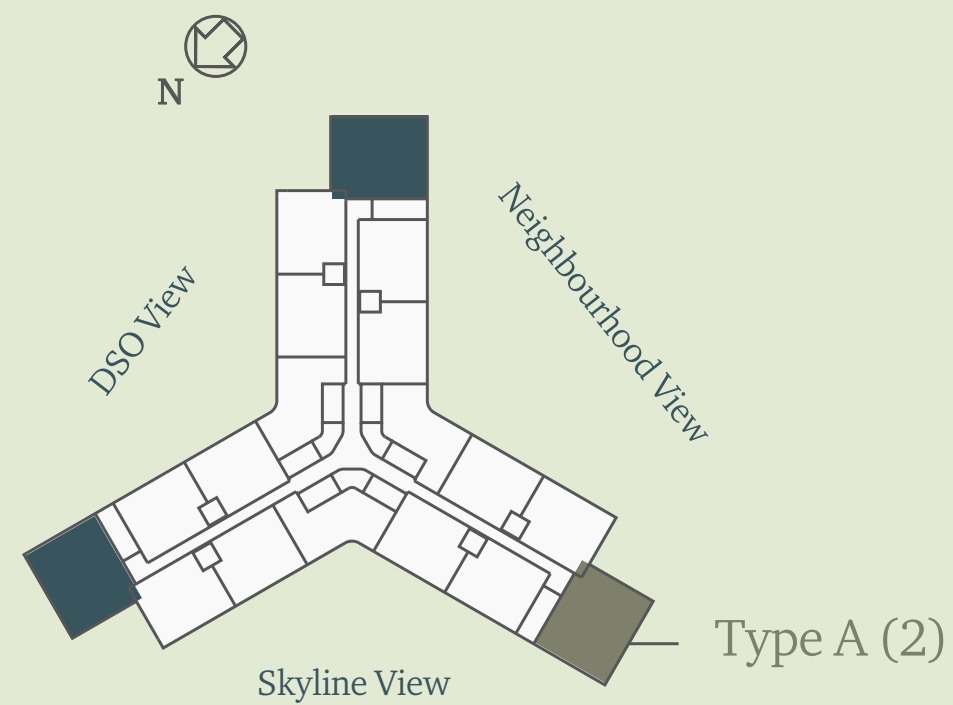
# 3 BEDROOM 1,770 SQ.FT.

## Type A

Internal Area: 1641 Sq.Ft.

Balcony Area: 129 Sq.Ft.

Total: 1770 Sq.Ft.



Available on 22nd to 28th floor



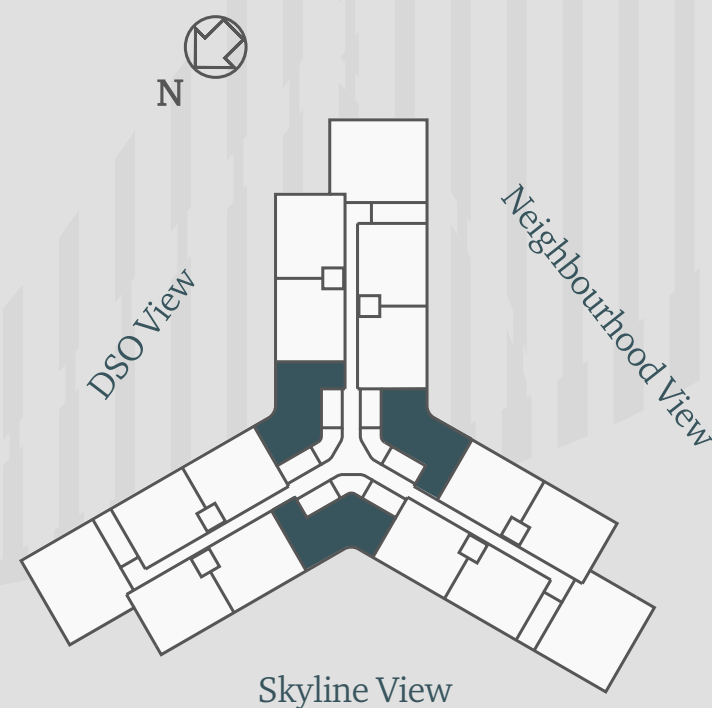
All the dimensions are in meter | Unit shown is typical, and actual Unit may vary in dimensions, areas, layout, material specification, orientation, and location | Unit Windows, Facade, Balcony door location, Fixtures, Kitchen Cabinets, Sanitary ware, and Wardrobes, including each of their location as shown in the plan is indicative and subject to revision by the Seller | All fixtures, fittings, goods, accessories, and furniture reflected/ displayed in this plan(s) are strictly illustrative and representational (not actual) in nature and are only for the purpose of illustrating /reflecting one of the possible layouts which the Purchaser could arrange after the Unit is handed over and do not form part of the Unit. No Furniture, goods, accessories are included in the sale.



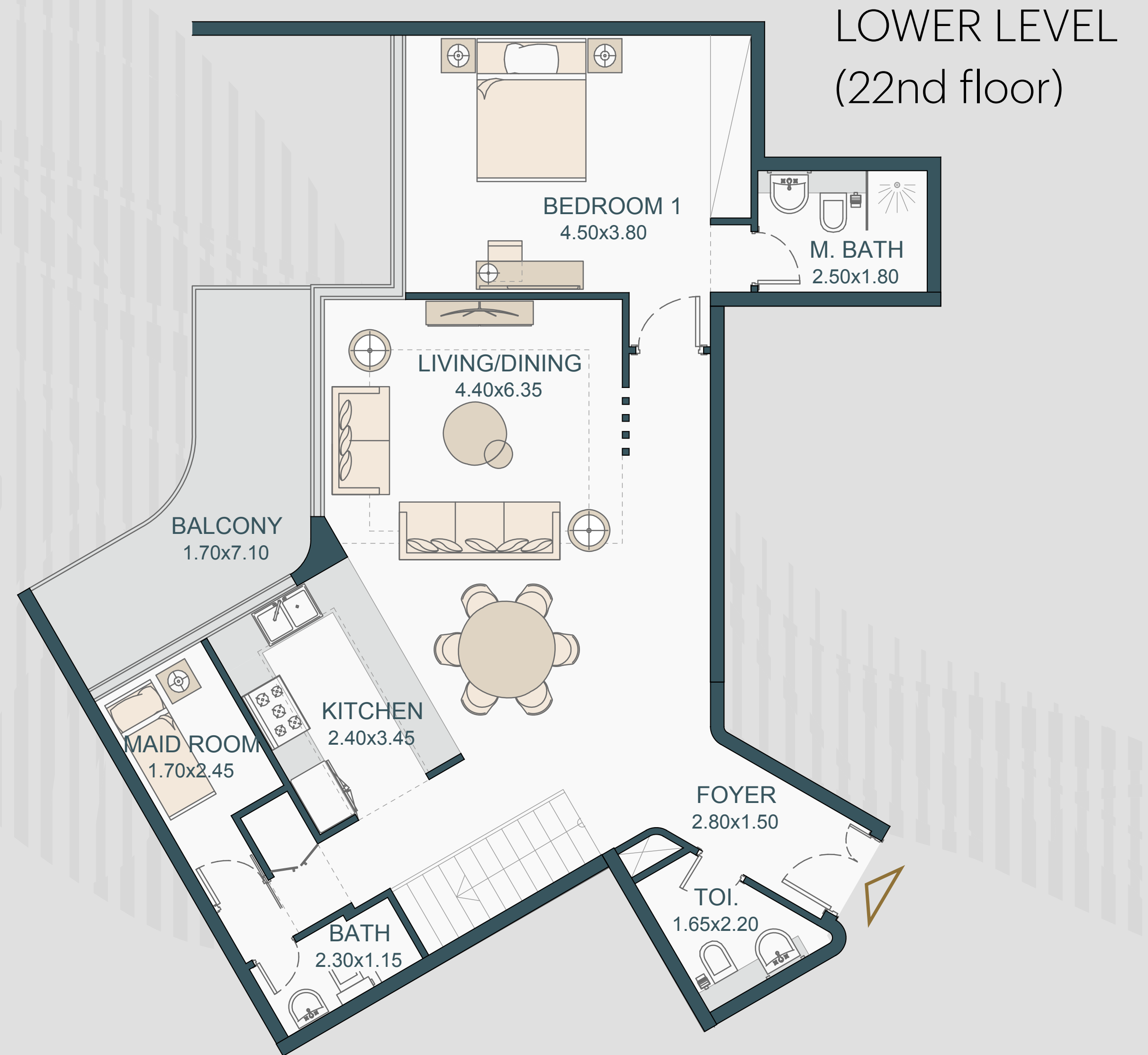
# 3 BEDROOM DUPLEX 2,200 SQ.FT.

## Type A

Internal Area: 2067 Sq.Ft.  
Balcony Area: 133 Sq.Ft.  
Total: 2220 Sq.Ft.



Available on 22nd to 27th floor

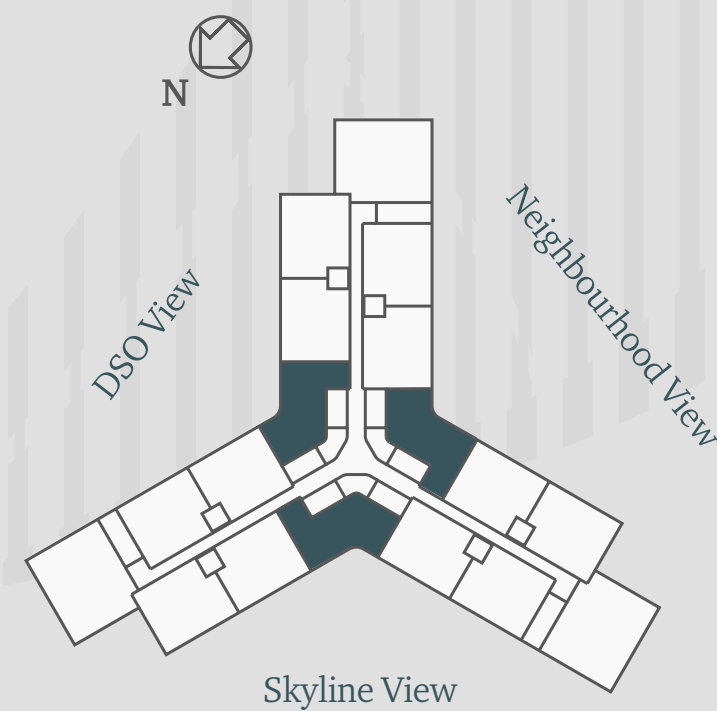


All the dimensions are in meter | Unit shown is typical, and actual Unit may vary in dimensions, areas, layout, material specification, orientation, and location | Unit Windows, Facade, Balcony door location, Fixtures, Kitchen Cabinets, Sanitary ware, and Wardrobes, including each of their location as shown in the plan is indicative and subject to revision by the Seller | All fixtures, fittings, goods, accessories, and furniture reflected/ displayed in this plan(s) are strictly illustrative and representational (not actual) in nature and are only for the purpose of illustrating /reflecting one of the possible layouts which the Purchaser could arrange after the Unit is handed over and do not form part of the Unit. No Furniture, goods, accessories are included in the sale.

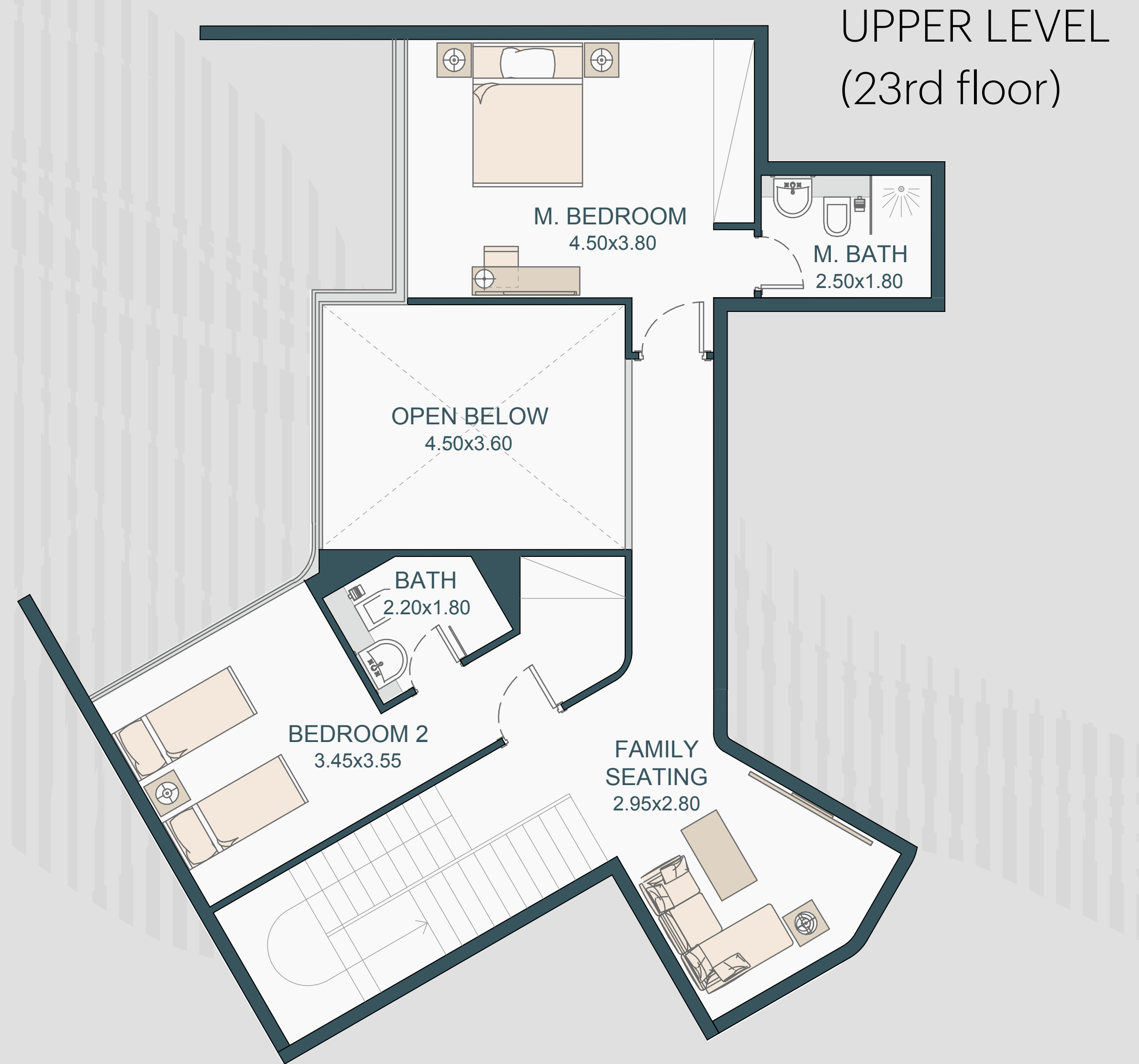
# 3 BEDROOM DUPLEX 2,200 SQ.FT.

## Type A

Internal Area: 2067 Sq.Ft.  
Balcony Area: 133 Sq.Ft.  
Total: 2220 Sq.Ft.



Available on 22nd to 27th floor



All the dimensions are in meter | Unit shown is typical, and actual Unit may vary in dimensions, areas, layout, material specification, orientation, and location | Unit Windows, Facade, Balcony door location, Fixtures, Kitchen Cabinets, Sanitary ware, and Wardrobes, including each of their location as shown in the plan is indicative and subject to revision by the Seller | All fixtures, fittings, goods, accessories, and furniture reflected/ displayed in this plan(s) are strictly illustrative and representational (not actual) in nature and are only for the purpose of illustrating /reflecting one of the possible layouts which the Purchaser could arrange after the Unit is handed over and do not form part of the Unit. No Furniture, goods, accessories are included in the sale.

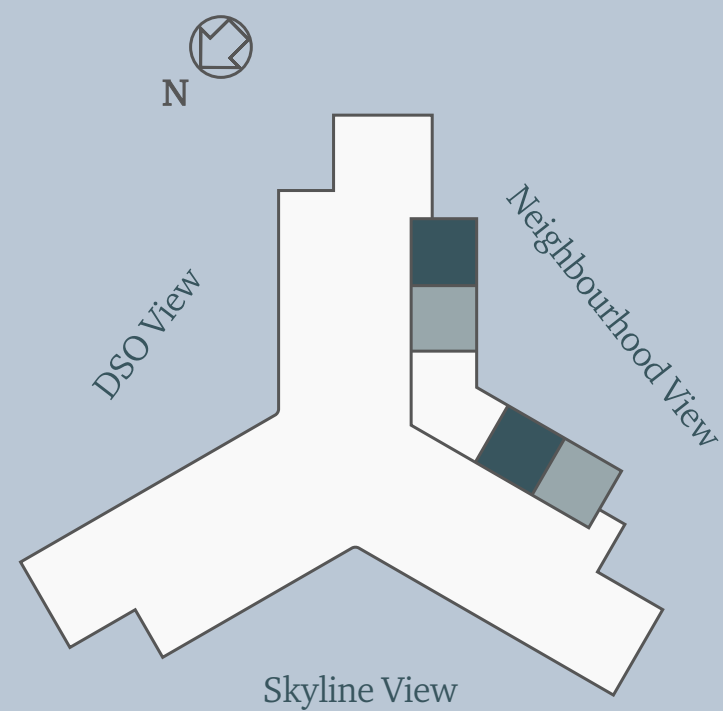
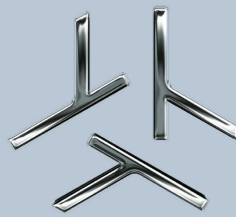


# 3 BR - TOWNHOUSE

## 2,325 SQ.FT.

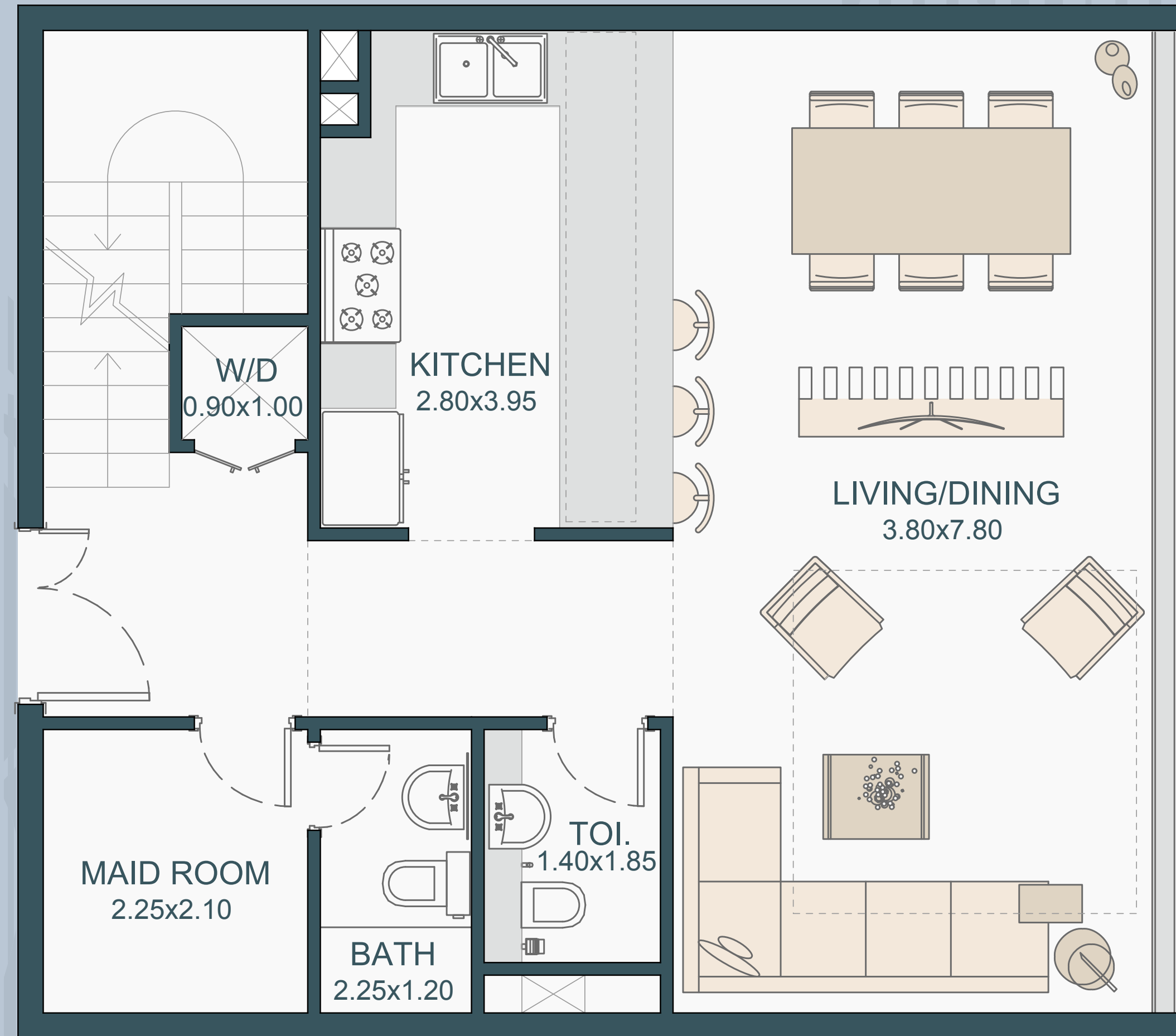
### Type A

Internal Area: 2104 Sq.Ft.  
 Balcony Area: 221 Sq.Ft.  
 Total: 2325 Sq.Ft.



Available on 2nd, 3rd podium & 1st floor

### ENTRANCE LEVEL (3rd podium)



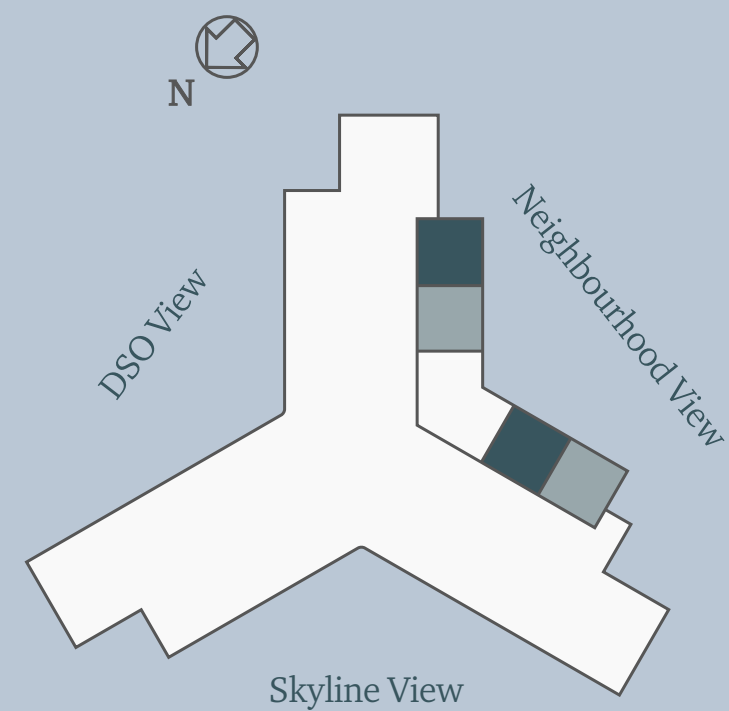
All the dimensions are in meter | Unit shown is typical, and actual Unit may vary in dimensions, areas, layout, material specification, orientation, and location | Unit Windows, Facade, Balcony door location, Fixtures, Kitchen Cabinets, Sanitary ware, and Wardrobes, including each of their location as shown in the plan is indicative and subject to revision by the Seller | All fixtures, fittings, goods, accessories, and furniture reflected/ displayed in this plan(s) are strictly illustrative and representational (not actual) in nature and are only for the purpose of illustrating /reflecting one of the possible layouts which the Purchaser could arrange after the Unit is handed over and do not form part of the Unit. No Furniture, goods, accessories are included in the sale.

# 3 BR - TOWNHOUSE

## 2,325 SQ.FT.

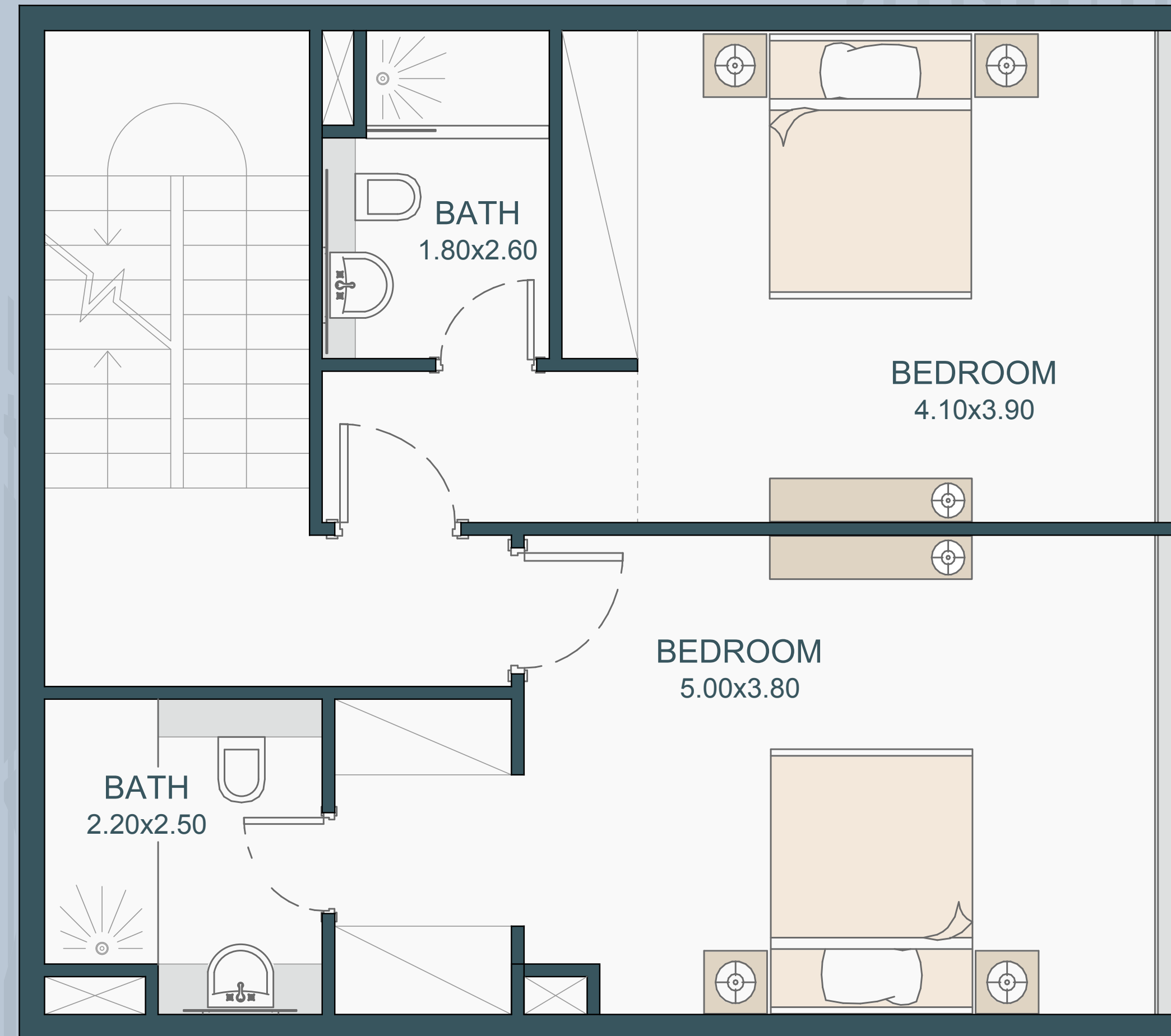
### Type A

Internal Area: 2104 Sq.Ft.  
 Balcony Area: 221 Sq.Ft.  
 Total: 2325 Sq.Ft.



Available on 2nd, 3rd podium & 1st floor

LOWER LEVEL  
(2nd podium)



All the dimensions are in meter | Unit shown is typical, and actual Unit may vary in dimensions, areas, layout, material specification, orientation, and location | Unit Windows, Facade, Balcony door location, Fixtures, Kitchen Cabinets, Sanitary ware, and Wardrobes, including each of their location as shown in the plan is indicative and subject to revision by the Seller | All fixtures, fittings, goods, accessories, and furniture reflected/ displayed in this plan(s) are strictly illustrative and representational (not actual) in nature and are only for the purpose of illustrating /reflecting one of the possible layouts which the Purchaser could arrange after the Unit is handed over and do not form part of the Unit. No Furniture, goods, accessories are included in the sale.

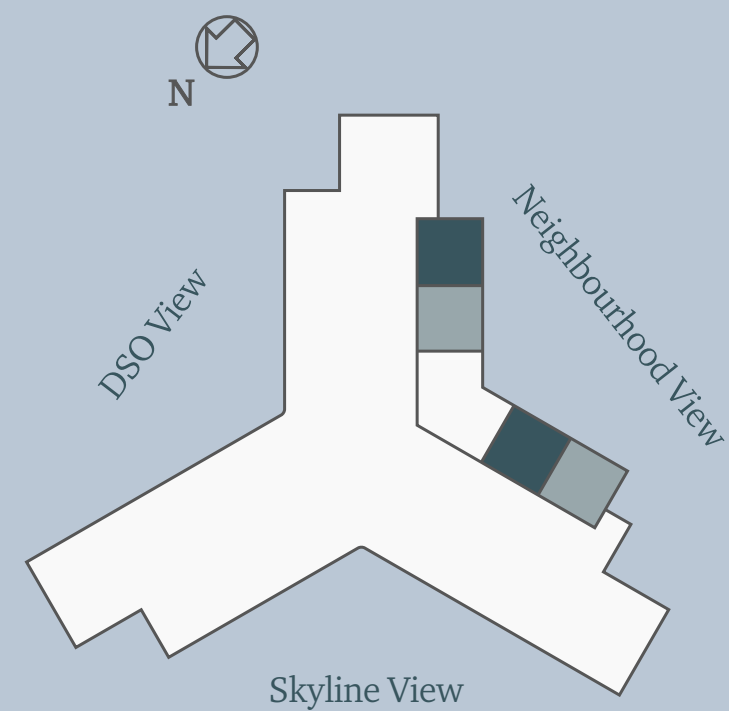


# 3 BR - TOWNHOUSE

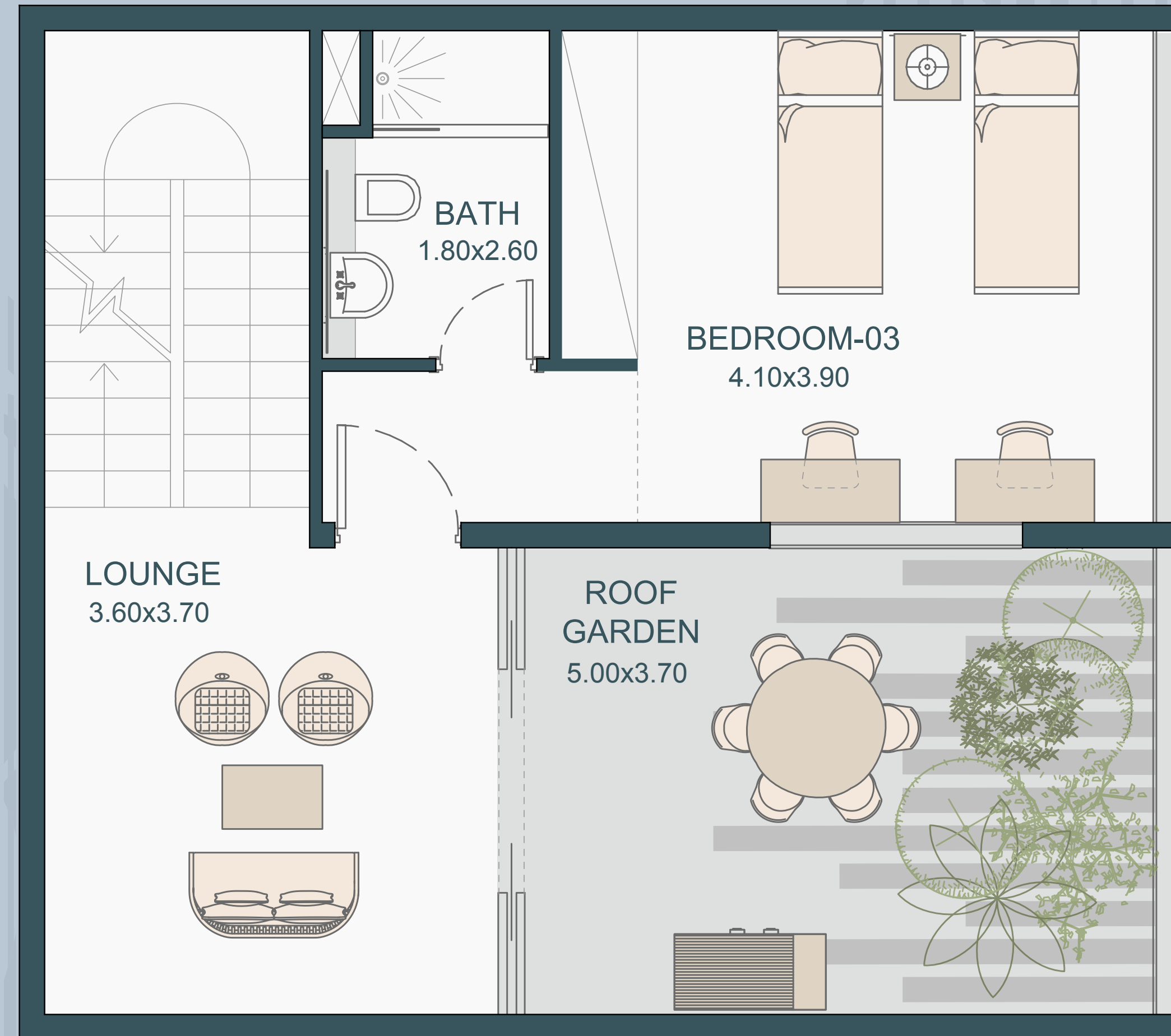
## 2,325 SQ.FT.

### Type A

Internal Area: 2104 Sq.Ft.  
 Balcony Area: 221 Sq.Ft.  
 Total: 2325 Sq.Ft.



## ROOF LEVEL (1st floor)



Available on 2nd, 3rd podium & 1st floor

All the dimensions are in meter | Unit shown is typical, and actual Unit may vary in dimensions, areas, layout, material specification, orientation, and location | Unit Windows, Facade, Balcony door location, Fixtures, Kitchen Cabinets, Sanitary ware, and Wardrobes, including each of their location as shown in the plan is indicative and subject to revision by the Seller | All fixtures, fittings, goods, accessories, and furniture reflected/ displayed in this plan(s) are strictly illustrative and representational (not actual) in nature and are only for the purpose of illustrating /reflecting one of the possible layouts which the Purchaser could arrange after the Unit is handed over and do not form part of the Unit. No Furniture, goods, accessories are included in the sale.

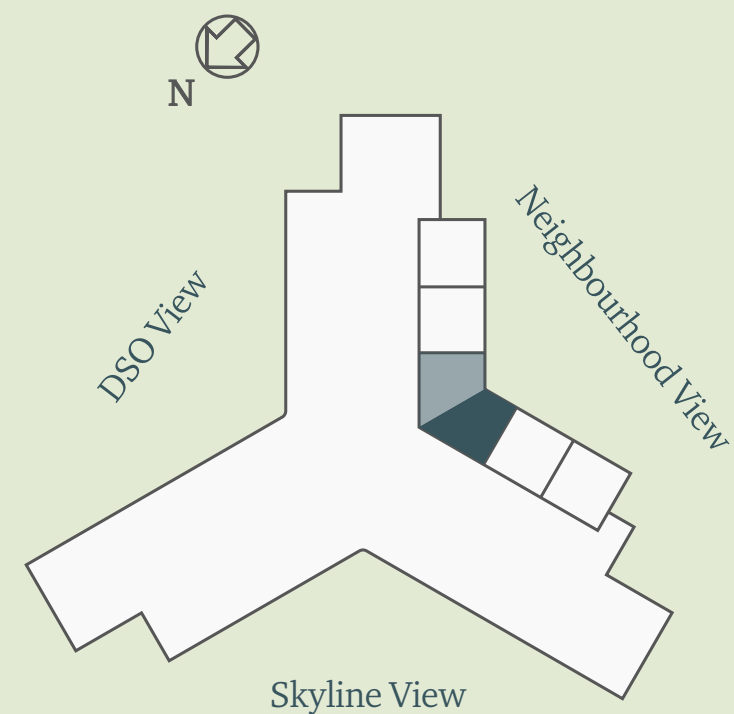
# 3 BR - TOWNHOUSE 2,600 SQ.FT.

## Type B

Internal Area: 2231 Sq.Ft.

Balcony Area: 369 Sq.Ft.

Total: 2600 Sq.Ft.



Available on 2nd, 3rd podium & 1st floor



All the dimensions are in meter | Unit shown is typical, and actual Unit may vary in dimensions, areas, layout, material specification, orientation, and location | Unit Windows, Facade, Balcony door location, Fixtures, Kitchen Cabinets, Sanitary ware, and Wardrobes, including each of their location as shown in the plan is indicative and subject to revision by the Seller | All fixtures, fittings, goods, accessories, and furniture reflected/ displayed in this plan(s) are strictly illustrative and representational (not actual) in nature and are only for the purpose of illustrating /reflecting one of the possible layouts which the Purchaser could arrange after the Unit is handed over and do not form part of the Unit. No Furniture, goods, accessories are included in the sale.



# 3 BR - TOWNHOUSE

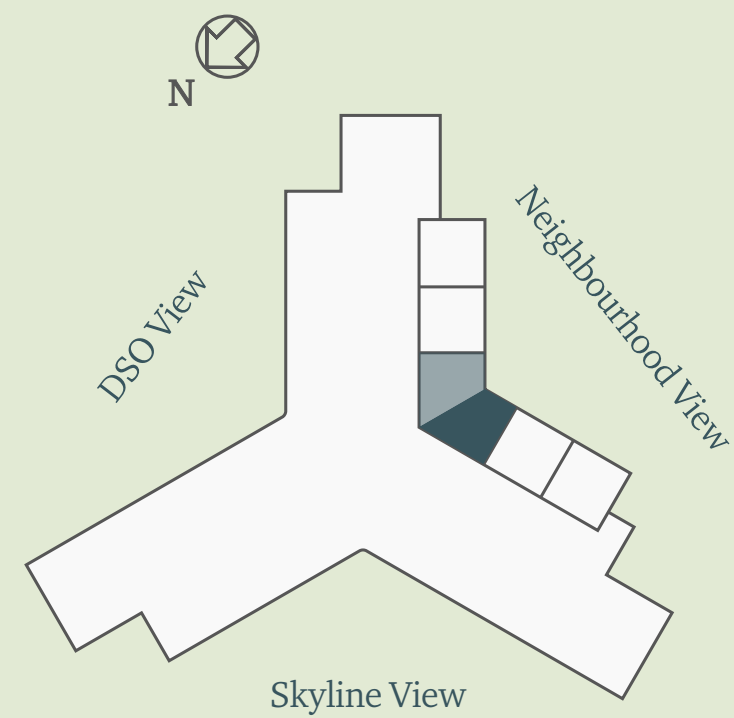
## 2,600 SQ.FT. Lower Level

### Type B

Internal Area: 2231 Sq.Ft.

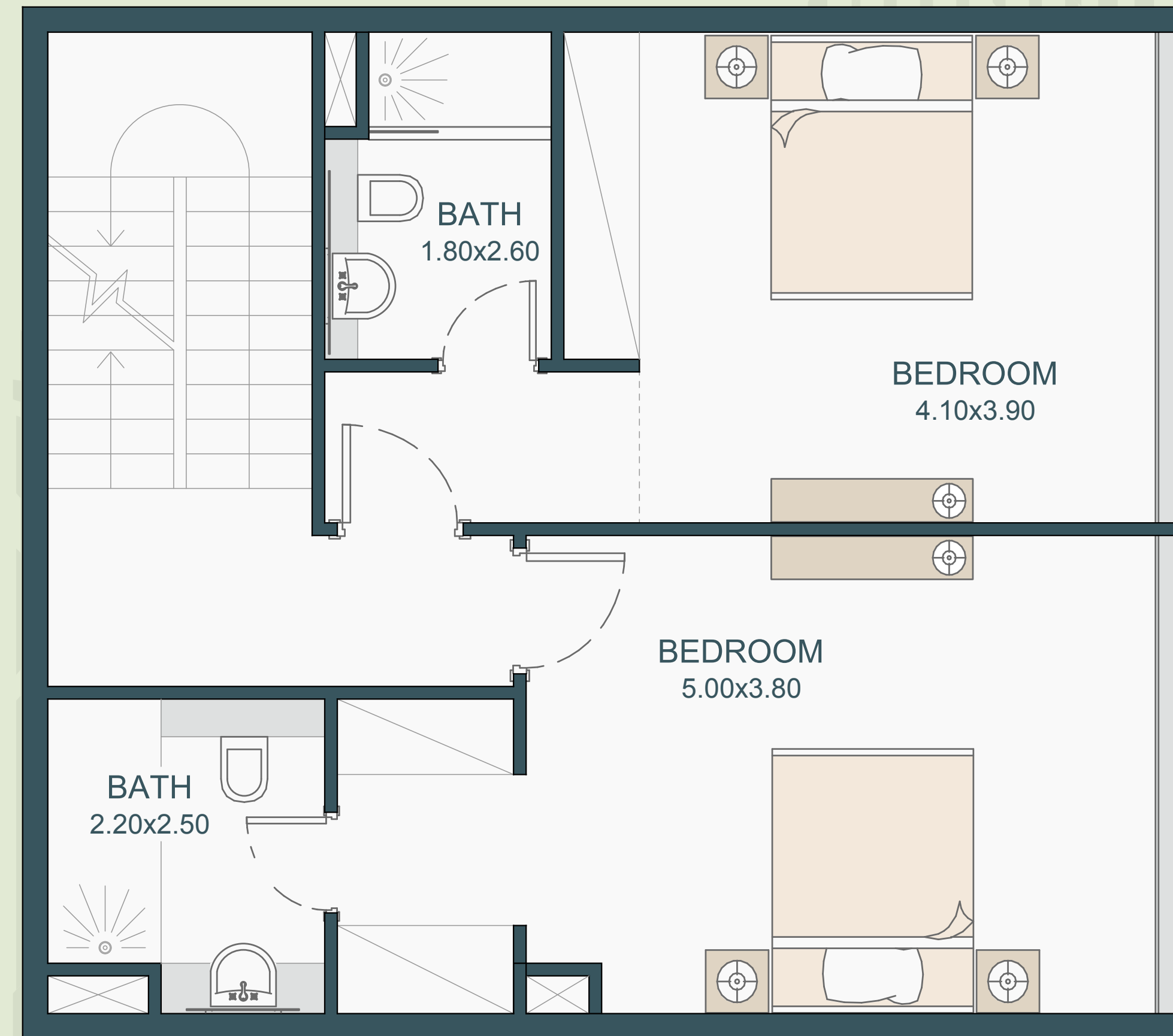
Balcony Area: 369 Sq.Ft.

Total: 2600 Sq.Ft.



Available on 2nd, 3rd podium & 1st floor

## LOWER LEVEL (2nd podium)



All the dimensions are in meter | Unit shown is typical, and actual Unit may vary in dimensions, areas, layout, material specification, orientation, and location | Unit Windows, Facade, Balcony door location, Fixtures, Kitchen Cabinets, Sanitary ware, and Wardrobes, including each of their location as shown in the plan is indicative and subject to revision by the Seller | All fixtures, fittings, goods, accessories, and furniture reflected/ displayed in this plan(s) are strictly illustrative and representational (not actual) in nature and are only for the purpose of illustrating /reflecting one of the possible layouts which the Purchaser could arrange after the Unit is handed over and do not form part of the Unit. No Furniture, goods, accessories are included in the sale.

# 3 BR - TOWNHOUSE

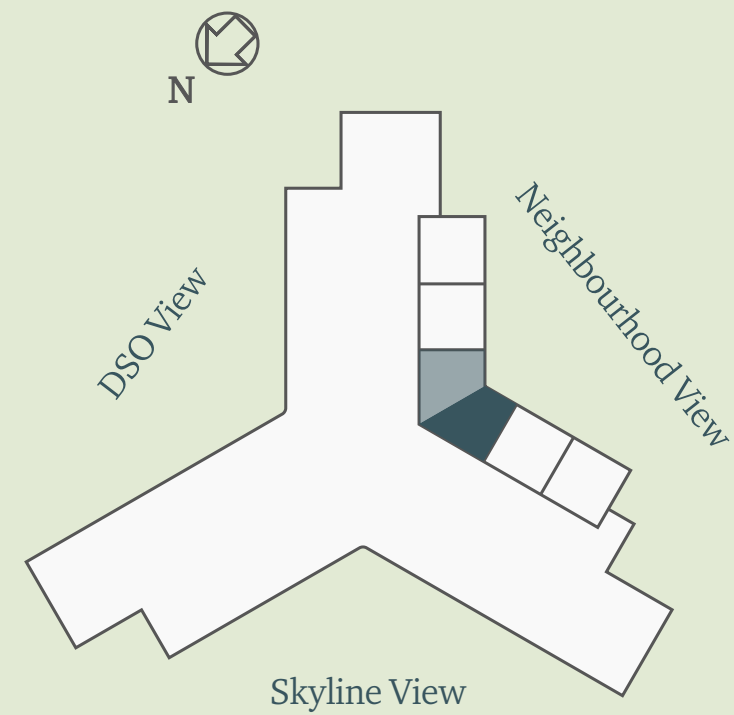
## 2,600 SQ.FT. Roof Level

### Type B

Internal Area: 2231 Sq.Ft.

Balcony Area: 369 Sq.Ft.

Total: 2600 Sq.Ft.



Available on 2nd, 3rd podium & 1st floor

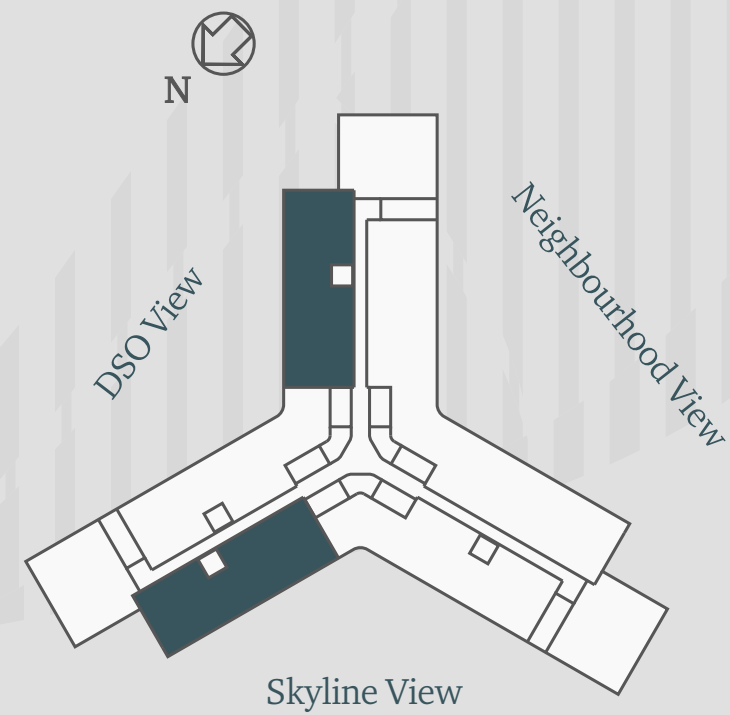




# PENTHOUSE 2,885 SQ.FT.

## Type A

Internal Area: 2556 Sq.Ft.  
Balcony Area: 329 Sq.Ft.  
Total: 2885 Sq.Ft.



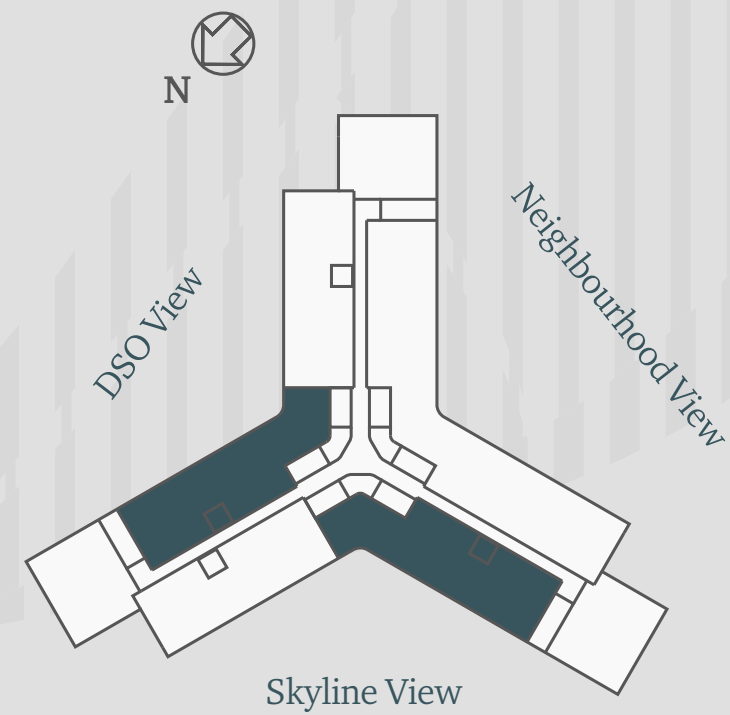
Available on 28th floor



# PENTHOUSE 3,215 SQ.FT.

## Type B

Internal Area: 2440 Sq.Ft.  
Balcony Area: 775 Sq.Ft.  
Total: 3215 Sq.Ft.



Available on 28th floor



All the dimensions are in meter | Unit shown is typical, and actual Unit may vary in dimensions, areas, layout, material specification, orientation, and location | Unit Windows, Facade, Balcony door location, Fixtures, Kitchen Cabinets, Sanitary ware, and Wardrobes, including each of their location as shown in the plan is indicative and subject to revision by the Seller | All fixtures, fittings, goods, accessories, and furniture reflected/ displayed in this plan(s) are strictly illustrative and representational (not actual) in nature and are only for the purpose of illustrating /reflecting one of the possible layouts which the Purchaser could arrange after the Unit is handed over and do not form part of the Unit. No Furniture, goods, accessories are included in the sale.