

وترز أڤ  
**WATER'S EDGE**

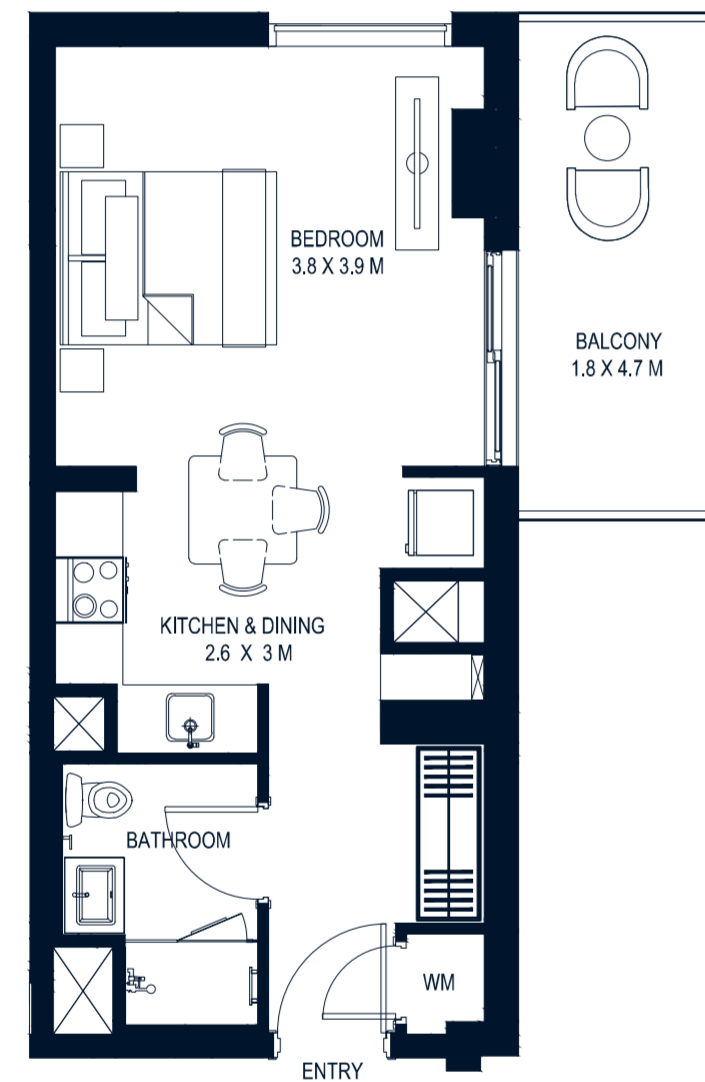
YAS ISLAND LIVING

FLOOR PLANS



AVERAGE AREA: 43m<sup>2</sup>\*

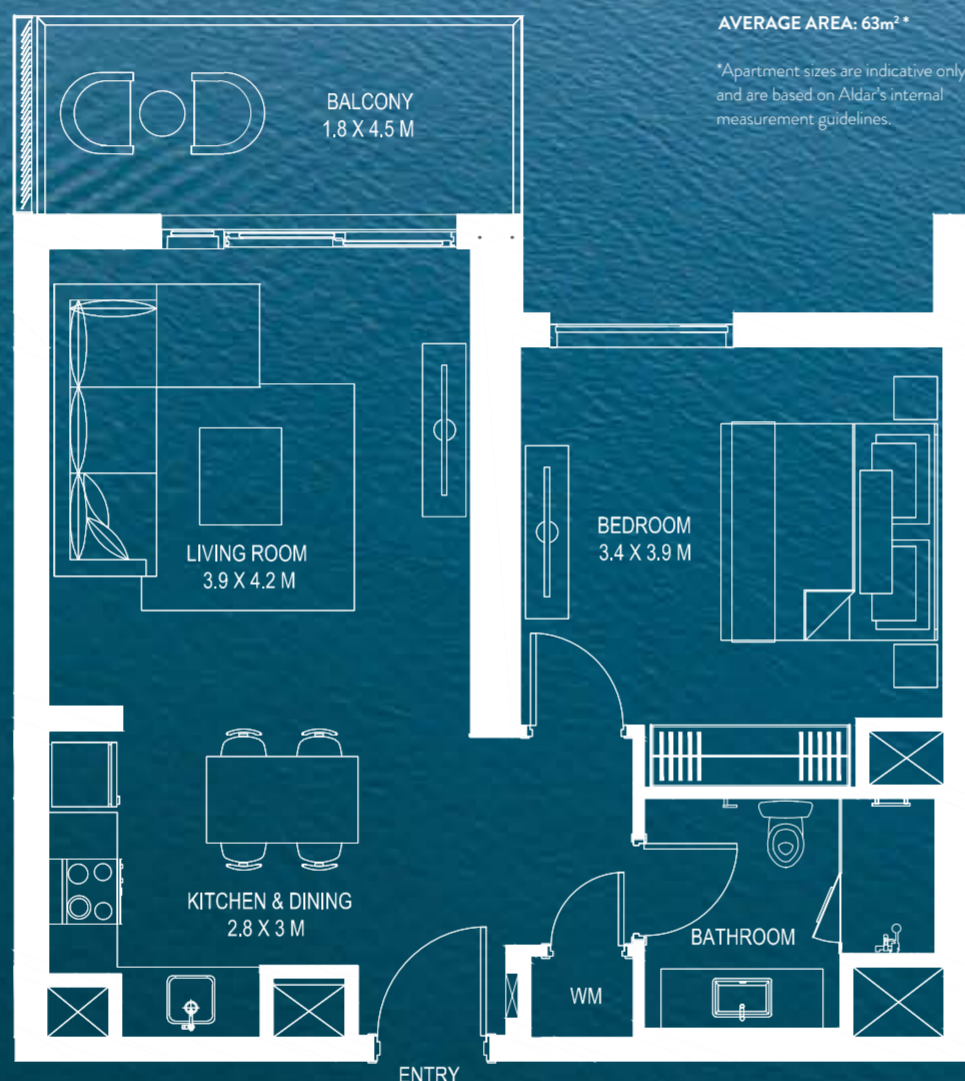
\*Apartment sizes are indicative only and are based on Aldar's internal measurement guidelines.



**S**  
STUDIO

AVERAGE AREA: 63m<sup>2</sup>\*

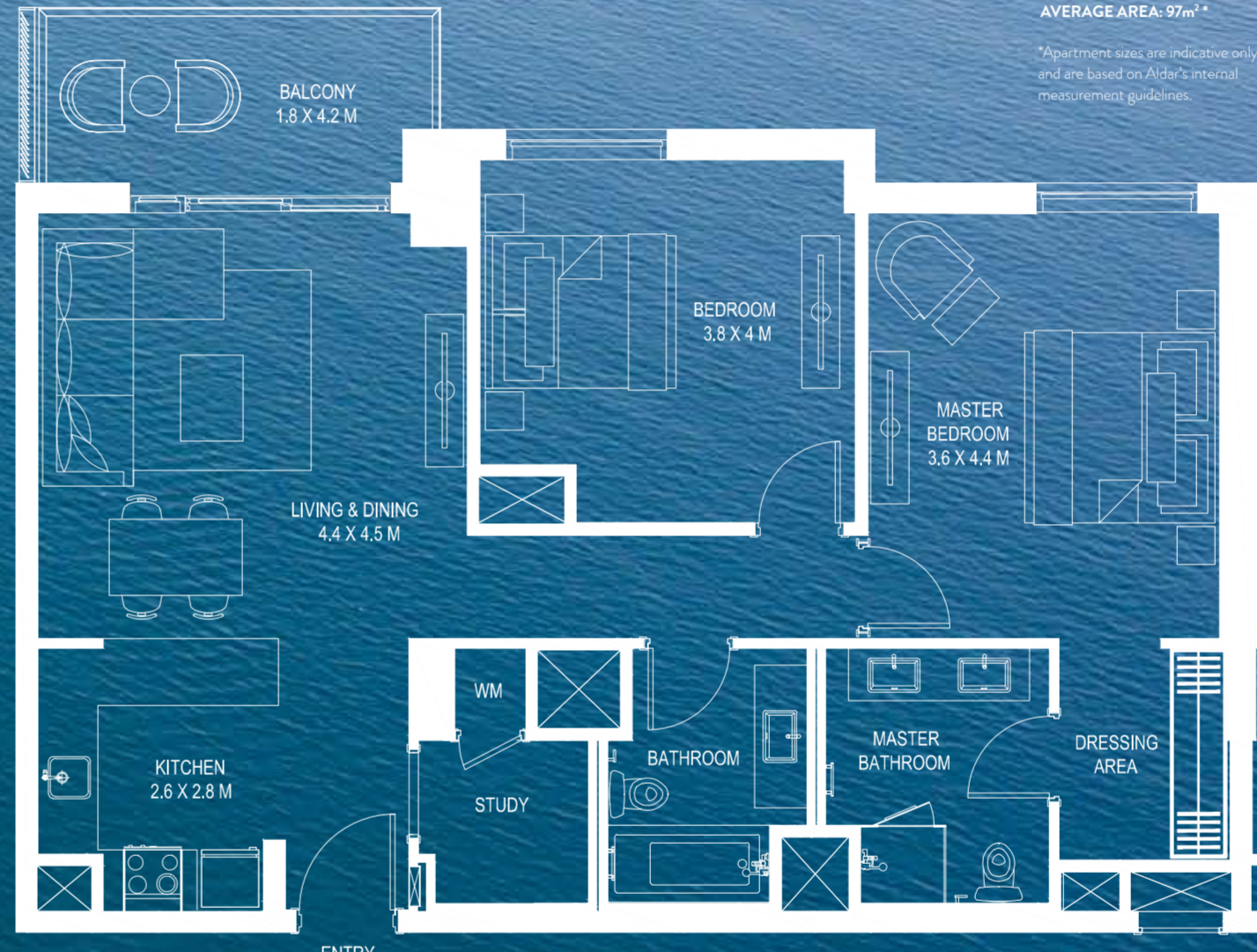
\*Apartment sizes are indicative only and are based on Aldar's internal measurement guidelines.



**1**  
BEDROOM

AVERAGE AREA: 97m<sup>2</sup>\*

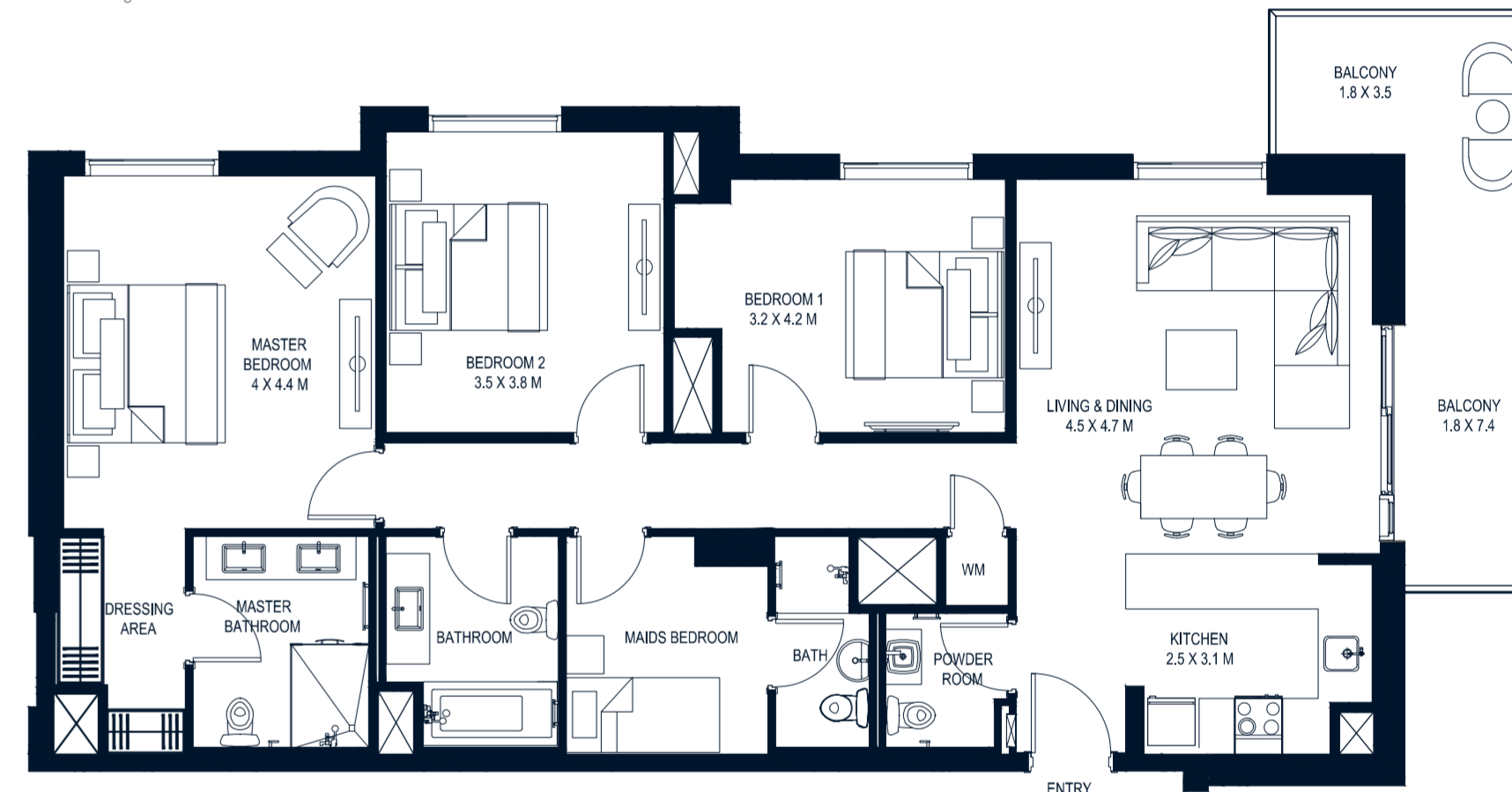
\*Apartment sizes are indicative only and are based on Aldar's internal measurement guidelines.



**2**  
BEDROOM

AVERAGE AREA: 140m<sup>2</sup>\*

\*Apartment sizes are indicative only and are based on Aldar's internal measurement guidelines.



**3**  
BEDROOM

**Disclaimer:** Note that this floor plan was produced prior to the completion of construction and is indicative only and not to scale. Changes may be made during the development and areas, fittings, finishes and specifications are subject to change without notice in accordance with the provision of the Contract of Sale. The furniture depicted is not included with any sale and should not be taken to indicate the final positions of power points, TV connections and the like. Prospective purchasers must rely on their own enquiries from time to time. Bulkheads necessary for services and structure are not depicted.



## **CONTACT US**

**Toll-Free: 800 37373**

**Hotline : +971 52 754 3244**

**Email : sales@drehomes.com**



**Visit Us For More Info:-**

**<https://drehomes.com/property/waters-edge-apartments/>**