

MAPLE



Floor-Plan

DUBAI HILLS
ESTATE

MAPLE

MAPLE

DUBAI HILLS
ESTATE

Ground Level



Unit 2E
4 Bed Room

Unit 2M
3 Bed Rooms

Unit 2M
3 Bed Rooms

Unit 2E
4 Bed Rooms



Type 2

Unit 2M
3 Bed Rooms

Total Area:
2,238 sq ft



Ground Level



Upper Level



Disclaimer: 1. All room dimensions are measured to structural elements and exclude wall finishes and construction tolerances. 2. All dimensions have been provided by our consultant architects. 3. All materials, dimensions & drawings are approximate. Information is subject to change without notice. 4. Actual sale area may vary from the stated area. Drawings not to scale. The developer reserves the right to make revisions. 5. Calculation of sale area is measured as the area bounded by the center line of demising or partition walls separating one unit from another unit, the exterior face of all exterior walls, and the exterior face of the corridor wall enclosing the adjoining unit. 6. Calculation of balcony area is measured as the area bounded by the center line of demising or partition walls separating one unit from another unit, the outmost face of the enclosing guard and the external face of the unit adjoining the balcony. 7. The units are measured at typical floor in the building. Columns may vary in size depending on the floor level.



Disclaimer: 1. All room dimensions are measured to structural elements and exclude wall finishes and construction tolerances. 2. All dimensions have been provided by our consultant architects. 3. All materials, dimensions & drawings are approximate. Information is subject to change without notice. 4. Actual sale area may vary from the stated area. Drawings not to scale. The developer reserves the right to make revisions. 5. Calculation of sale area is measured as the area bounded by the center line of demising or partition walls separating one unit from another unit, the exterior face of all exterior walls, and the exterior face of the corridor wall enclosing the adjoining unit. 6. Calculation of balcony area is measured as the area bounded by the center line of demising or partition walls separating one unit from another unit, the outmost face of the enclosing guard and the external face of the unit adjoining the balcony. 7. The units are measured at typical floor in the building. Columns may vary in size depending on the floor level.

Ground Level

Type 2

Unit 2E
4 Bed Rooms

Total Area:
2,462 sq ft

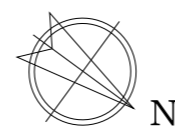


Unit 2E
4 Bed Room

Unit 2M
3 Bed Rooms

Unit 2M
3 Bed Room

Unit 2E
4 Bed Rooms

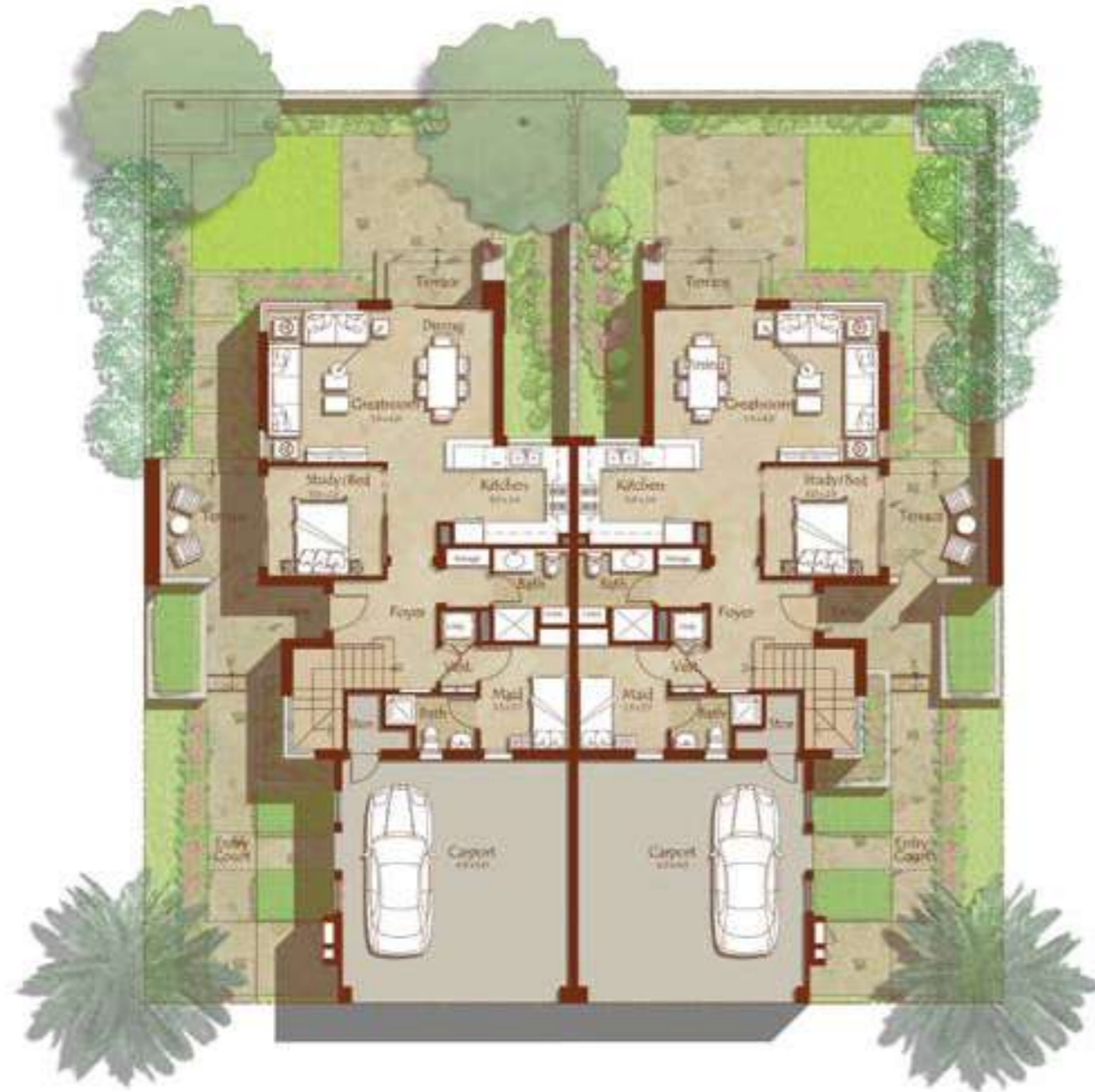


Ground Level



Upper Level

Ground Level



Unit 2E
4 Bed Room

Unit 2E
4 Bed Rooms



Type 2

Unit 2E
4 Bed Rooms

Total Area:
2,462 sq ft



Ground Level



Upper Level

Ground Level



Unit 3E
5 Bed Room

Unit 3M
4 Bed Rooms

Unit 3M
4 Bed Room

Unit 3E
5 Bed Rooms



Type 3

Unit 3M
4 Bed Rooms

Total Area:
2,387 sq ft



Ground Level



Upper Level

Ground Level

Type 3

Unit 3E
5 Bed Rooms

Total Area:
2,700 sq ft



Unit 3E
5 Bed Room

Unit 3M
4 Bed Rooms

Unit 3M
4 Bed Room

Unit 3E
5 Bed Rooms



Ground Level



Upper Level

Type 3

Unit 3E
5 Bed Rooms

Total Area:
2,700 sq ft

Ground Level



Unit 3E
5 Bed Room

Unit 3E
5 Bed Rooms



Ground Level



Upper Level





Contact Us

Toll Free : 800 37373

Hotline : +971 52 754 3246

Email : sales@drehomes.com

Visit Us For More Info:-

<https://drehomes.com/property/emaar-maple-townhouses/>