

BAYSHORE

AT CREEK BEACH

FLOOR PLANS
BUILDING 2

EMAAR

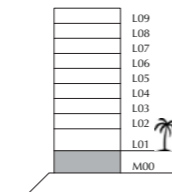
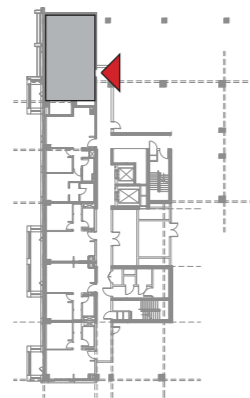
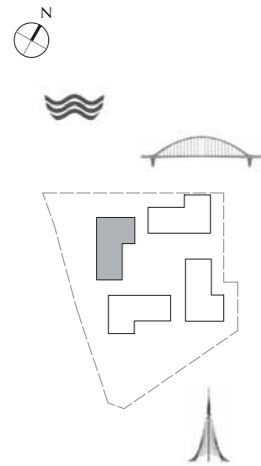
DUBAI CREEK
HARBOUR

BAYSHORE AT
CREEK BEACH

BUILDING 2
MEZZANINE LEVEL
UNIT M01

2 BEDROOM

APARTMENT AREA	92.55 SQ.M.	996.20 SQ.FT.
BALCONY AREA	7.69 SQ.M.	82.77 SQ.FT.
TOTAL AREA	100.24 SQ.M.	1078.97 SQ.FT.



FLOOR PLAN 1. All dimensions are in imperial and metric, and measured from finish to finish excluding construction tolerances. 2.All materials, dimensions, and drawings are approximate only. 3. Information is subject to change without notice, at developer's absolute discretion. 4. Actual area may vary from the stated area. 5. Drawings not to scale. 6. All images used are for illustrative purpose only and do not represent the actual size, features, specifications, fittings, and finishings. 7. The developer reserves the right to make revisions / alterations, at it's a absolute discretion, without any liability whatsoever.

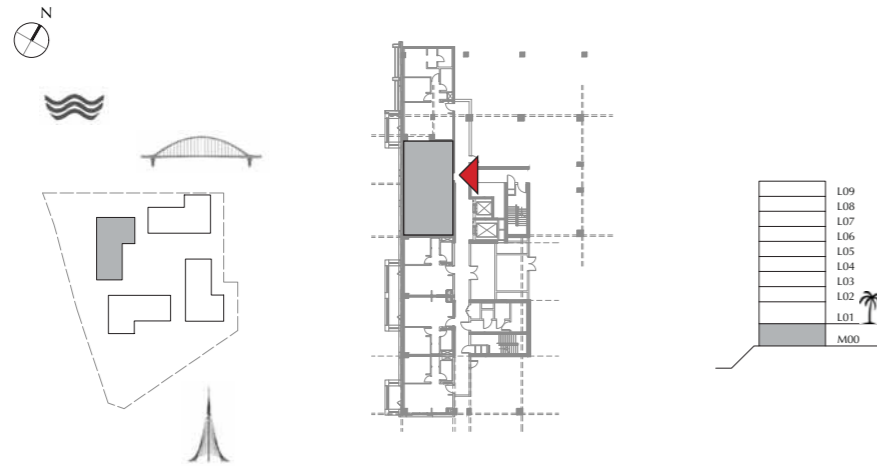
DUBAI CREEK
HARBOUR

BAYSHORE AT
CREEK BEACH

BUILDING 2
MEZZANINE LEVEL
UNIT M02

2 BEDROOM

APARTMENT AREA	85.10 SQ.M.	916.01 SQ.FT.
BALCONY AREA	0.00 SQ.M.	00.00 SQ.FT.
TOTAL AREA	85.10 SQ.M.	916.01 SQ.FT.



FLOOR PLAN 1. All dimensions are in imperial and metric, and measured from finish to finish excluding construction tolerances. 2.All materials, dimensions, and drawings are approximate only. 3. Information is subject to change without notice, at developer's absolute discretion. 4. Actual area may vary from the stated area. 5. Drawings not to scale. 6. All images used are for illustrative purpose only and do not represent the actual size, features, specifications, fittings, and finishings. 7. The developer reserves the right to make revisions / alterations, at it's a absolute discretion, without any liability whatsoever.

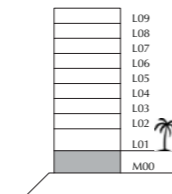
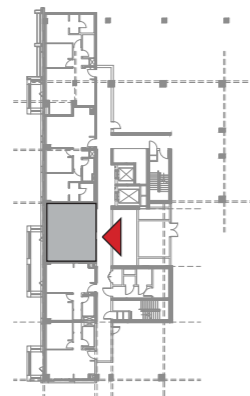
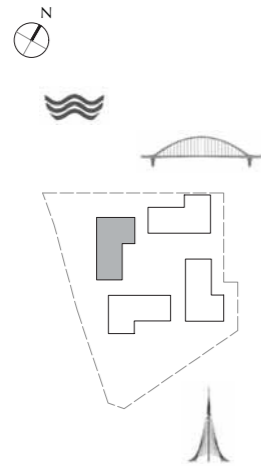
DUBAI CREEK
HARBOUR

BAYSHORE AT
CREEK BEACH

BUILDING 2
MEZZANINE LEVEL
UNIT M03

1 BEDROOM

APARTMENT AREA	54.96 SQ.M.	591.58 SQ.FT.
BALCONY AREA	8.40 SQ.M.	90.42 SQ.FT.
TOTAL AREA	63.36 SQ.M.	682.00 SQ.FT.



FLOOR PLAN 1. All dimensions are in imperial and metric, and measured from finish to finish excluding construction tolerances. 2. All materials, dimensions, and drawings are approximate only. 3. Information is subject to change without notice, at developer's absolute discretion. 4. Actual area may vary from the stated area. 5. Drawings not to scale. 6. All images used are for illustrative purpose only and do not represent the actual size, features, specifications, fittings, and finishings. 7. The developer reserves the right to make revisions / alterations, at its absolute discretion, without any liability whatsoever.

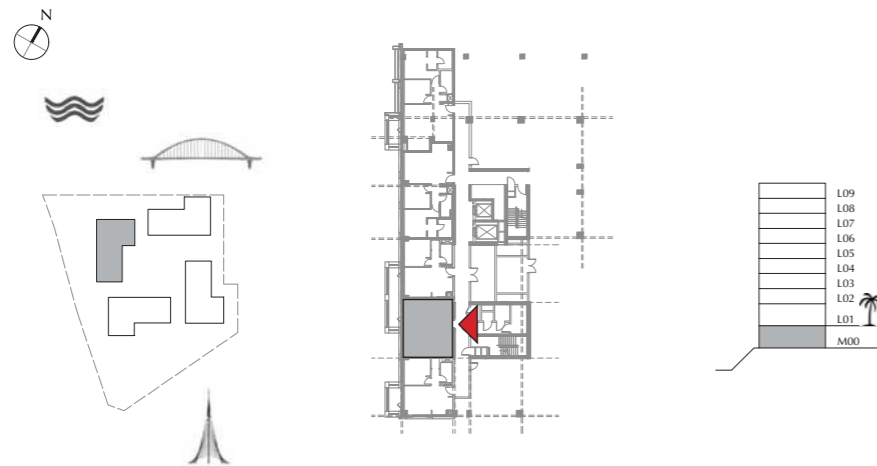
DUBAI CREEK
HARBOUR

BAYSHORE AT
CREEK BEACH

BUILDING 2
MEZZANINE LEVEL
UNIT M04

1 BEDROOM

APARTMENT AREA	55.29 SQ.M.	595.14 SQ.FT.
BALCONY AREA	8.40 SQ.M.	90.42 SQ.FT.
TOTAL AREA	63.69 SQ.M.	685.56 SQ.FT.



FLOOR PLAN 1. All dimensions are in imperial and metric, and measured from finish to finish excluding construction tolerances. 2.All materials, dimensions, and drawings are approximate only. 3. Information is subject to change without notice, at developer's absolute discretion. 4. Actual area may vary from the stated area. 5. Drawings not to scale. 6. All images used are for illustrative purpose only and do not represent the actual size, features, specifications, fittings, and finishings. 7. The developer reserves the right to make revisions / alterations, at it's a absolute discretion, without any liability whatsoever.

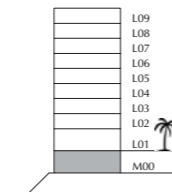
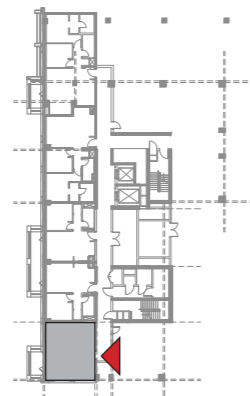
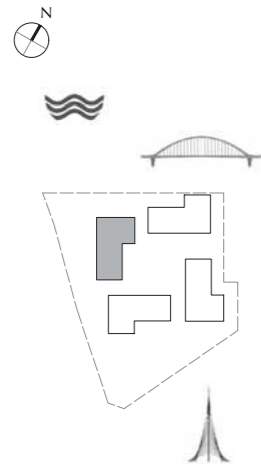
DUBAI CREEK
HARBOUR

BAYSHORE AT
CREEK BEACH

BUILDING 2
MEZZANINE LEVEL
UNIT M05

1 BEDROOM

APARTMENT AREA	54.50 SQ.M.	586.63 SQ.FT.
BALCONY AREA	7.40 SQ.M.	79.65 SQ.FT.
TOTAL AREA	61.90 SQ.M.	666.28 SQ.FT.



FLOOR PLAN 1. All dimensions are in imperial and metric, and measured from finish to finish excluding construction tolerances. 2. All materials, dimensions, and drawings are approximate only. 3. Information is subject to change without notice, at developer's absolute discretion. 4. Actual area may vary from the stated area. 5. Drawings not to scale. 6. All images used are for illustrative purpose only and do not represent the actual size, features, specifications, fittings, and finishings. 7. The developer reserves the right to make revisions / alterations, at its absolute discretion, without any liability whatsoever.

DUBAI CREEK
HARBOUR

BAYSHORE AT
CREEK BEACH

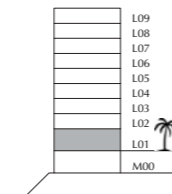
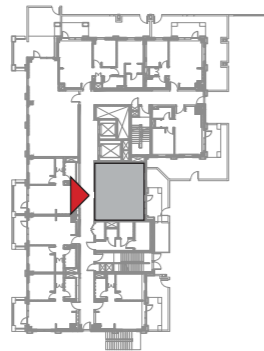
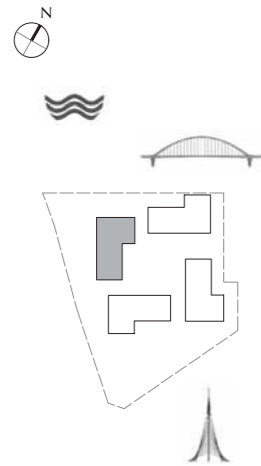
BUILDING 2

LEVEL 1

UNIT 101

1 BEDROOM

APARTMENT AREA	55.35 SQ.M.	595.78 SQ.FT.
BALCONY AREA	22.32 SQ.M.	240.25 SQ.FT.
TOTAL AREA	77.67 SQ.M.	836.03 SQ.FT.



FLOOR PLAN 1. All dimensions are in imperial and metric, and measured from finish to finish excluding construction tolerances. 2. All materials, dimensions, and drawings are approximate only. 3. Information is subject to change without notice, at developer's absolute discretion. 4. Actual area may vary from the stated area. 5. Drawings not to scale. 6. All images used are for illustrative purpose only and do not represent the actual size, features, specifications, fittings, and finishings. 7. The developer reserves the right to make revisions / alterations, at its absolute discretion, without any liability whatsoever.

DUBAI CREEK
HARBOUR

BAYSHORE AT
CREEK BEACH

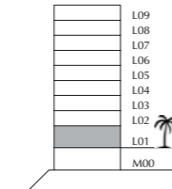
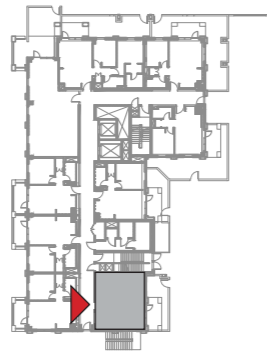
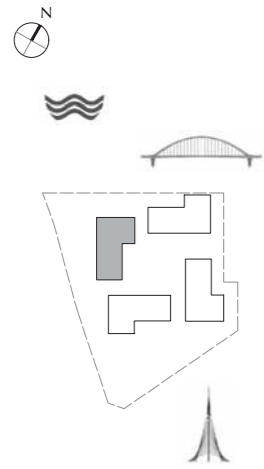
BUILDING 2

LEVEL 1

UNIT 102

1 BEDROOM

APARTMENT AREA	54.80 SQ.M.	589.86 SQ.FT.
BALCONY AREA	24.86 SQ.M.	267.59 SQ.FT.
TOTAL AREA	79.66 SQ.M.	857.45 SQ.FT.



FLOOR PLAN 1. All dimensions are in imperial and metric, and measured from finish to finish excluding construction tolerances. 2. All materials, dimensions, and drawings are approximate only. 3. Information is subject to change without notice, at developer's absolute discretion. 4. Actual area may vary from the stated area. 5. Drawings not to scale. 6. All images used are for illustrative purpose only and do not represent the actual size, features, specifications, fittings, and finishings. 7. The developer reserves the right to make revisions / alterations, at its absolute discretion, without any liability whatsoever.

DUBAI CREEK
HARBOUR

BAYSHORE AT
CREEK BEACH

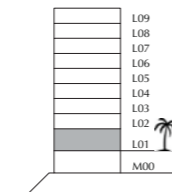
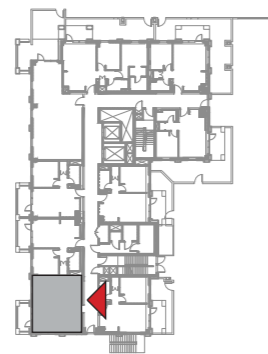
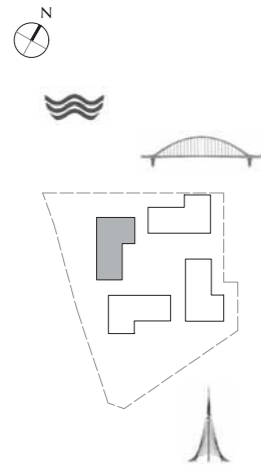
BUILDING 2

LEVEL 1

UNIT 103

1 BEDROOM

APARTMENT AREA	54.60 SQ.M.	587.71 SQ.FT.
BALCONY AREA	7.40 SQ.M.	79.65 SQ.FT.
TOTAL AREA	62.00 SQ.M.	667.36 SQ.FT.



FLOOR PLAN 1. All dimensions are in imperial and metric, and measured from finish to finish excluding construction tolerances. 2. All materials, dimensions, and drawings are approximate only. 3. Information is subject to change without notice, at developer's absolute discretion. 4. Actual area may vary from the stated area. 5. Drawings not to scale. 6. All images used are for illustrative purpose only and do not represent the actual size, features, specifications, fittings, and finishings. 7. The developer reserves the right to make revisions / alterations, at its absolute discretion, without any liability whatsoever.

DUBAI CREEK
HARBOUR

BAYSHORE AT
CREEK BEACH

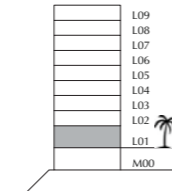
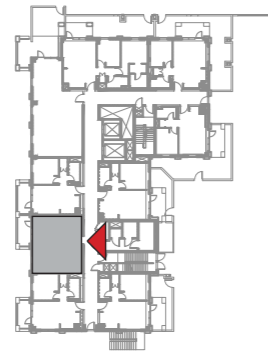
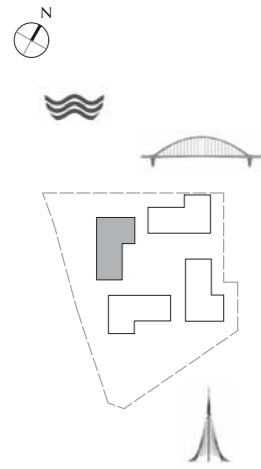
BUILDING 2

LEVEL 1

UNIT 104

1 BEDROOM

APARTMENT AREA	55.10 SQ.M.	593.09 SQ.FT.
BALCONY AREA	8.40 SQ.M.	90.42 SQ.FT.
TOTAL AREA	63.50 SQ.M.	683.51 SQ.FT.



FLOOR PLAN 1. All dimensions are in imperial and metric, and measured from finish to finish excluding construction tolerances. 2. All materials, dimensions, and drawings are approximate only. 3. Information is subject to change without notice, at developer's absolute discretion. 4. Actual area may vary from the stated area. 5. Drawings not to scale. 6. All images used are for illustrative purpose only and do not represent the actual size, features, specifications, fittings, and finishings. 7. The developer reserves the right to make revisions / alterations, at its absolute discretion, without any liability whatsoever.

DUBAI CREEK
HARBOUR

BAYSHORE AT
CREEK BEACH

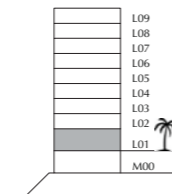
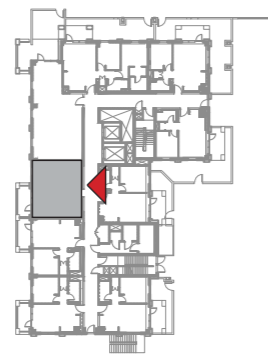
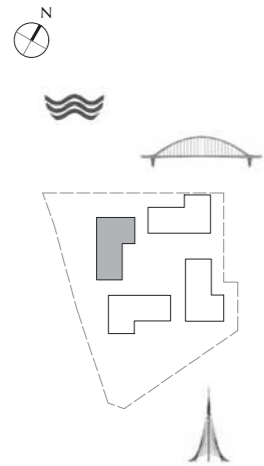
BUILDING 2

LEVEL 1

UNIT 105

1 BEDROOM

APARTMENT AREA	54.95 SQ.M.	591.48 SQ.FT.
BALCONY AREA	8.40 SQ.M.	90.42 SQ.FT.
TOTAL AREA	63.35 SQ.M.	681.90 SQ.FT.



FLOOR PLAN 1. All dimensions are in imperial and metric, and measured from finish to finish excluding construction tolerances. 2. All materials, dimensions, and drawings are approximate only. 3. Information is subject to change without notice, at developer's absolute discretion. 4. Actual area may vary from the stated area. 5. Drawings not to scale. 6. All images used are for illustrative purpose only and do not represent the actual size, features, specifications, fittings, and finishings. 7. The developer reserves the right to make revisions / alterations, at its absolute discretion, without any liability whatsoever.

DUBAI CREEK
HARBOUR

BAYSHORE AT
CREEK BEACH

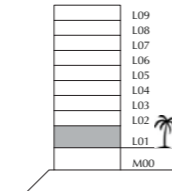
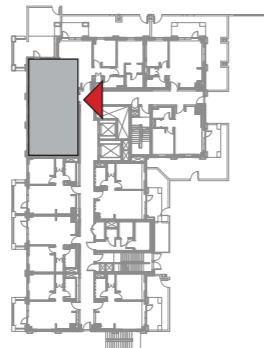
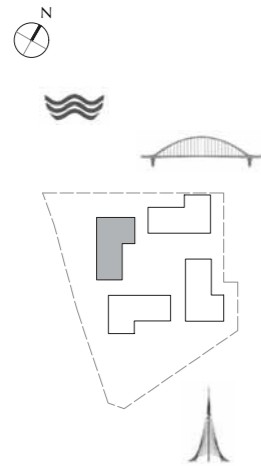
BUILDING 2

LEVEL 1

UNIT 106

2 BEDROOM

APARTMENT AREA	82.73 SQ.M.	890.50 SQ.FT.
BALCONY AREA	39.06 SQ.M.	420.44 SQ.FT.
TOTAL AREA	121.79 SQ.M.	1310.94 SQ.FT.



FLOOR PLAN 1. All dimensions are in imperial and metric, and measured from finish to finish excluding construction tolerances. 2. All materials, dimensions, and drawings are approximate only. 3. Information is subject to change without notice, at developer's absolute discretion. 4. Actual area may vary from the stated area. 5. Drawings not to scale. 6. All images used are for illustrative purpose only and do not represent the actual size, features, specifications, fittings, and finishings. 7. The developer reserves the right to make revisions / alterations, at it's a absolute discretion, without any liability whatsoever.

DUBAI CREEK
HARBOUR

BAYSHORE AT
CREEK BEACH

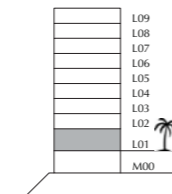
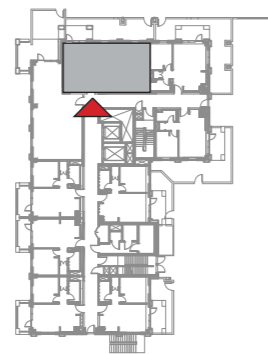
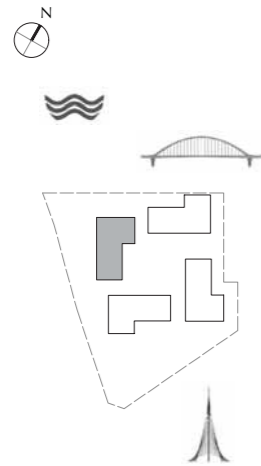
BUILDING 2

LEVEL 1

UNIT 107

2 BEDROOM

APARTMENT AREA	83.50 SQ.M.	898.79 SQ.FT.
BALCONY AREA	39.70 SQ.M.	427.33 SQ.FT.
TOTAL AREA	123.20 SQ.M.	1326.12 SQ.FT.



FLOOR PLAN 1. All dimensions are in imperial and metric, and measured from finish to finish excluding construction tolerances. 2.All materials, dimensions, and drawings are approximate only. 3. Information is subject to change without notice, at developer's absolute discretion. 4. Actual area may vary from the stated area. 5. Drawings not to scale. 6. All images used are for illustrative purpose only and do not represent the actual size, features, specifications, fittings, and finishings. 7. The developer reserves the right to make revisions / alterations, at it's a absolute discretion, without any liability whatsoever.

DUBAI CREEK
HARBOUR

BAYSHORE AT
CREEK BEACH

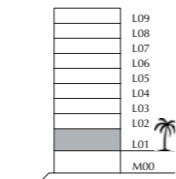
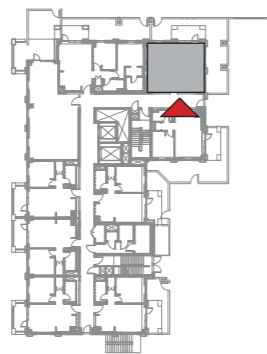
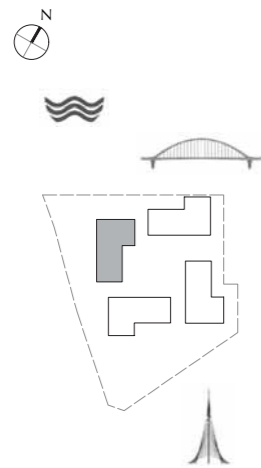
BUILDING 2

LEVEL 1

UNIT 108

1 BEDROOM

APARTMENT AREA	55.82 SQ.M.	600.84 SQ.FT.
BALCONY AREA	57.50 SQ.M.	618.92 SQ.FT.
TOTAL AREA	113.32 SQ.M.	1219.76 SQ.FT.



FLOOR PLAN 1. All dimensions are in imperial and metric, and measured from finish to finish excluding construction tolerances. 2. All materials, dimensions, and drawings are approximate only. 3. Information is subject to change without notice, at developer's absolute discretion. 4. Actual area may vary from the stated area. 5. Drawings not to scale. 6. All images used are for illustrative purpose only and do not represent the actual size, features, specifications, fittings, and finishings. 7. The developer reserves the right to make revisions / alterations, at its absolute discretion, without any liability whatsoever.

DUBAI CREEK
HARBOUR

BAYSHORE AT
CREEK BEACH

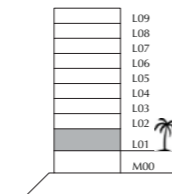
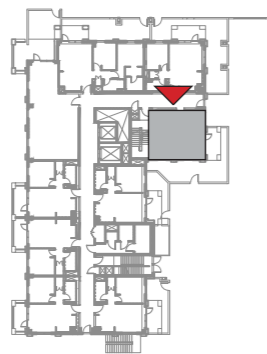
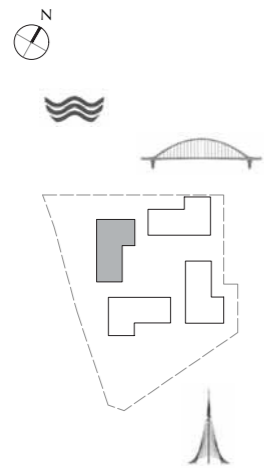
BUILDING 2

LEVEL 1

UNIT 109

1 BEDROOM

APARTMENT AREA	49.82 SQ.M.	536.26 SQ.FT.
BALCONY AREA	47.12 SQ.M.	507.20 SQ.FT.
TOTAL AREA	96.94 SQ.M.	1043.46 SQ.FT.



FLOOR PLAN 1. All dimensions are in imperial and metric, and measured from finish to finish excluding construction tolerances. 2. All materials, dimensions, and drawings are approximate only. 3. Information is subject to change without notice, at developer's absolute discretion. 4. Actual area may vary from the stated area. 5. Drawings not to scale. 6. All images used are for illustrative purpose only and do not represent the actual size, features, specifications, fittings, and furnishings. 7. The developer reserves the right to make revisions / alterations, at its absolute discretion, without any liability whatsoever.

DUBAI CREEK
HARBOUR

BAYSHORE AT
CREEK BEACH

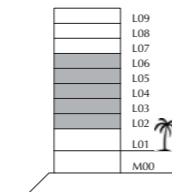
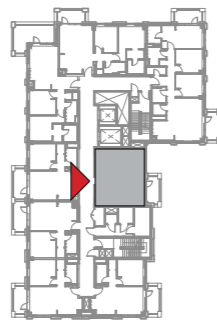
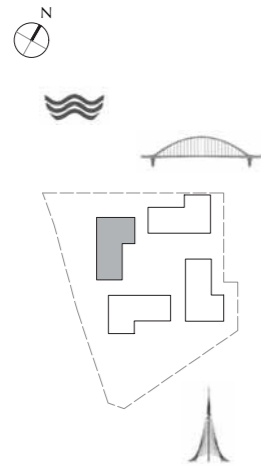
BUILDING 2

LEVEL 2, 3, 4, 5, 6

UNIT 201, 301, 401, 501, 601

1 BEDROOM

APARTMENT AREA	55.35 SQ.M.	595.78 SQ.FT.
BALCONY AREA	7.60 SQ.M.	81.81 SQ.FT.
TOTAL AREA	62.95 SQ.M.	677.59 SQ.FT.



FLOOR PLAN 1. All dimensions are in imperial and metric, and measured from finish to finish excluding construction tolerances. 2. All materials, dimensions, and drawings are approximate only. 3. Information is subject to change without notice, at developer's absolute discretion. 4. Actual area may vary from the stated area. 5. Drawings not to scale. 6. All images used are for illustrative purpose only and do not represent the actual size, features, specifications, fittings, and finishings. 7. The developer reserves the right to make revisions / alterations, at its absolute discretion, without any liability whatsoever.

DUBAI CREEK
HARBOUR

BAYSHORE AT
CREEK BEACH

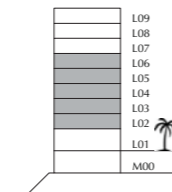
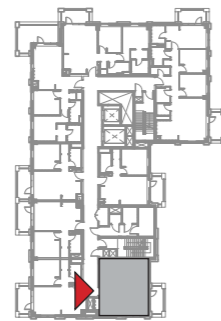
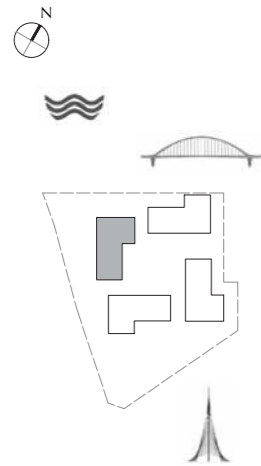
BUILDING 2

LEVEL 2, 3, 4, 5, 6

UNIT 202, 302, 402, 502, 602

1 BEDROOM

APARTMENT AREA	56.89 SQ.M.	612.36 SQ.FT.
BALCONY AREA	7.40 SQ.M.	79.65 SQ.FT.
TOTAL AREA	64.29 SQ.M.	692.01 SQ.FT.



FLOOR PLAN 1. All dimensions are in imperial and metric, and measured from finish to finish excluding construction tolerances. 2.All materials, dimensions, and drawings are approximate only. 3. Information is subject to change without notice, at developer's absolute discretion. 4. Actual area may vary from the stated area. 5. Drawings not to scale. 6. All images used are for illustrative purpose only and do not represent the actual size, features, specifications, fittings, and finishings. 7. The developer reserves the right to make revisions / alterations, at its absolute discretion, without any liability whatsoever.

DUBAI CREEK
HARBOUR

BAYSHORE AT
CREEK BEACH

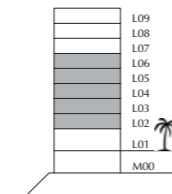
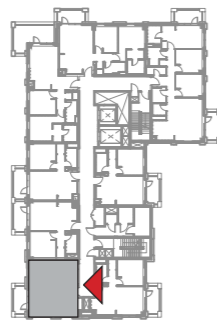
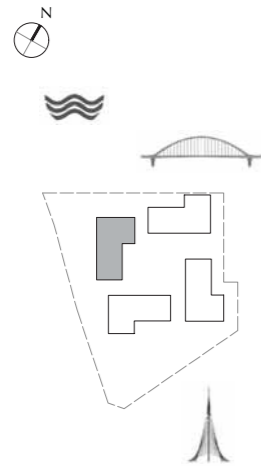
BUILDING 2

LEVEL 2, 3, 4, 5, 6

UNIT 203, 303, 403, 503, 603

1 BEDROOM

APARTMENT AREA	56.67 SQ.M.	609.99 SQ.FT.
BALCONY AREA	7.40 SQ.M.	79.65 SQ.FT.
TOTAL AREA	64.07 SQ.M.	689.64 SQ.FT.



FLOOR PLAN 1. All dimensions are in imperial and metric, and measured from finish to finish excluding construction tolerances. 2. All materials, dimensions, and drawings are approximate only. 3. Information is subject to change without notice, at developer's absolute discretion. 4. Actual area may vary from the stated area. 5. Drawings not to scale. 6. All images used are for illustrative purpose only and do not represent the actual size, features, specifications, fittings, and finishings. 7. The developer reserves the right to make revisions / alterations, at its absolute discretion, without any liability whatsoever.

DUBAI CREEK
HARBOUR

BAYSHORE AT
CREEK BEACH

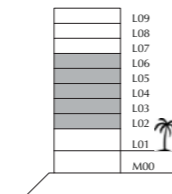
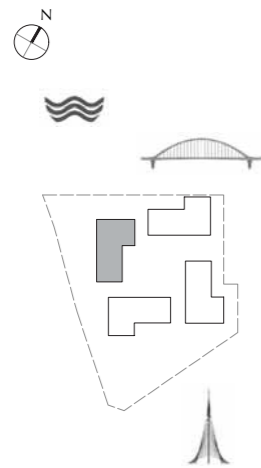
BUILDING 2

LEVEL 2, 3, 4, 5, 6

UNIT 204, 304, 404, 504, 604

1 BEDROOM

APARTMENT AREA	55.10 SQ.M.	593.09 SQ.FT.
BALCONY AREA	8.40 SQ.M.	90.42 SQ.FT.
TOTAL AREA	63.50 SQ.M.	683.51 SQ.FT.



FLOOR PLAN 1. All dimensions are in imperial and metric, and measured from finish to finish excluding construction tolerances. 2.All materials, dimensions, and drawings are approximate only. 3. Information is subject to change without notice, at developer's absolute discretion. 4. Actual area may vary from the stated area. 5. Drawings not to scale. 6. All images used are for illustrative purpose only and do not represent the actual size, features, specifications, fittings, and finishings. 7. The developer reserves the right to make revisions / alterations, at it's a absolute discretion, without any liability whatsoever.

DUBAI CREEK
HARBOUR

BAYSHORE AT
CREEK BEACH

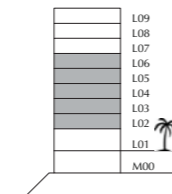
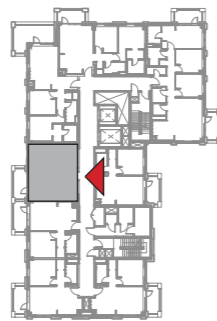
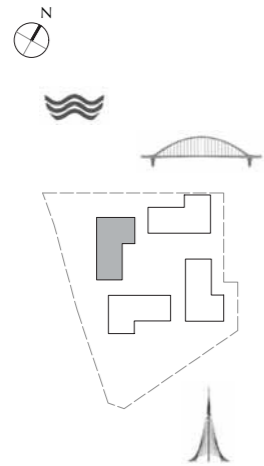
BUILDING 2

LEVEL 2, 3, 4, 5, 6

UNIT 205, 305, 405, 505, 605

1 BEDROOM

APARTMENT AREA	54.95 SQ.M.	591.48 SQ.FT.
BALCONY AREA	8.40 SQ.M.	90.42 SQ.FT.
TOTAL AREA	63.35 SQ.M.	681.90 SQ.FT.



FLOOR PLAN 1. All dimensions are in imperial and metric, and measured from finish to finish excluding construction tolerances. 2. All materials, dimensions, and drawings are approximate only. 3. Information is subject to change without notice, at developer's absolute discretion. 4. Actual area may vary from the stated area. 5. Drawings not to scale. 6. All images used are for illustrative purpose only and do not represent the actual size, features, specifications, fittings, and finishings. 7. The developer reserves the right to make revisions / alterations, at its absolute discretion, without any liability whatsoever.

DUBAI CREEK
HARBOUR

BAYSHORE AT
CREEK BEACH

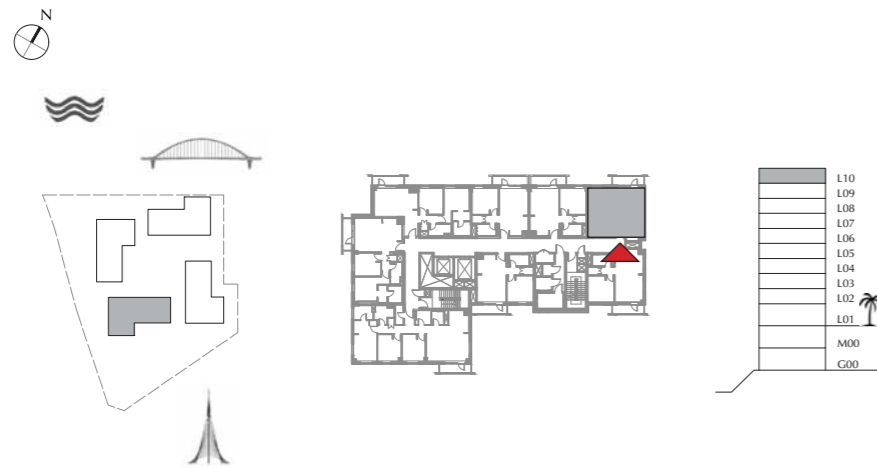
BUILDING 4

LEVEL 10

UNIT 1003

1 BEDROOM

APARTMENT AREA	56.60 SQ.M.	609.24 SQ.FT.
BALCONY AREA	10.04 SQ.M.	108.07 SQ.FT.
TOTAL AREA	66.64 SQ.M.	717.31 SQ.FT.



FLOOR PLAN 1. All dimensions are in imperial and metric, and measured from finish to finish excluding construction tolerances. 2. All materials, dimensions, and drawings are approximate only. 3. Information is subject to change without notice, at developer's absolute discretion. 4. Actual area may vary from the stated area. 5. Drawings not to scale. 6. All images used are for illustrative purpose only and do not represent the actual size, features, specifications, fittings, and furnishings. 7. The developer reserves the right to make revisions / alterations, at it's a absolute discretion, without any liability whatsoever.