

# VIDA

DUBAI MALL

## FLOOR PLANS

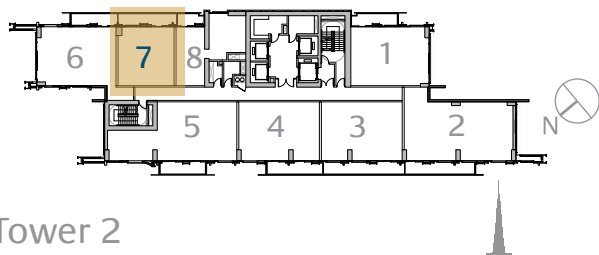
TOWER 2

BRANDED APARTMENTS



# 1 Bedroom Type 1B.A

Unit 07  
Level 08-15  
Level 17-38



Tower 2

	sq.m	sq.ft
Suite Area	60.70	653.37
Balcony Area	14.10	151.77
<b>Total Area</b>	<b>74.80</b>	<b>805.14</b>

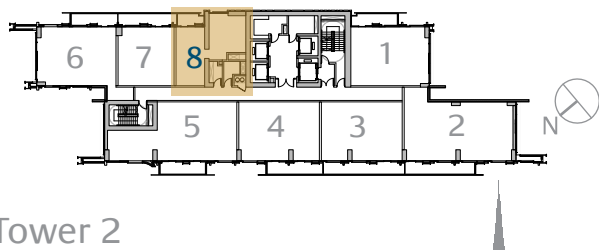


**FLOOR PLANS** 1. All dimensions are in imperial and metric, and measured to structural elements and exclude wall finishes and construction tolerances. 2. All materials, dimensions, and drawings are approximate only. 3. Information is subject to change without notice, at developer's absolute discretion. 4. Actual area may vary from the stated area. 5. Drawings not to scale. 6. All images used are for illustrative purposes only and do not represent the actual size, features, specifications, fittings, and furnishings. 7. The developer reserves the right to make revisions/alterations at its absolute discretion, without any liability whatsoever.

# 1 Bedroom

## Type 1B.B

Unit 08  
Level 08-15  
Level 17-38



Tower 2

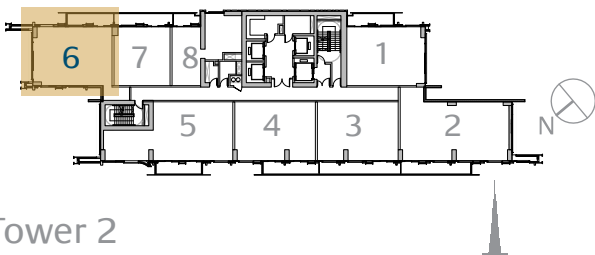
Level 08-15	sq.m	sq.ft
Suite Area	65.44	704.39
Balcony Area	6.69	72.01
<b>Total Area</b>	<b>72.13</b>	<b>776.40</b>
Level 17-38	sq.m	sq.ft
Suite Area	65.42	704.18
Balcony Area	6.59	70.93
<b>Total Area</b>	<b>72.01</b>	<b>775.11</b>



**FLOOR PLANS** 1. All dimensions are in imperial and metric, and measured to structural elements and exclude wall finishes and construction tolerances. 2. All materials, dimensions, and drawings are approximate only. 3. Information is subject to change without notice, at developer's absolute discretion. 4. Actual area may vary from the stated area. 5. Drawings not to scale. 6. All images used are for illustrative purposes only and do not represent the actual size, features, specifications, fittings, and furnishings. 7. The developer reserves the right to make revisions/alterations at its absolute discretion, without any liability whatsoever.

# 2 Bedroom Type 2B.A

Unit 06  
Level 08-15  
Level 17-38



Tower 2

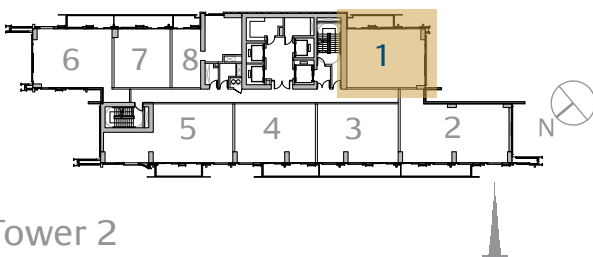
	sq.m	sq.ft
Suite Area	94.32	1015.25
Balcony Area	11.31	121.74
<b>Total Area</b>	<b>105.63</b>	<b>1136.99</b>



**FLOOR PLANS** 1. All dimensions are in imperial and metric, and measured to structural elements and exclude wall finishes and construction tolerances. 2. All materials, dimensions, and drawings are approximate only. 3. Information is subject to change without notice, at developer's absolute discretion. 4. Actual area may vary from the stated area. 5. Drawings not to scale. 6. All images used are for illustrative purposes only and do not represent the actual size, features, specifications, fittings, and furnishings. 7. The developer reserves the right to make revisions/alterations at its absolute discretion, without any liability whatsoever.

# 2 Bedroom Type 2B.B

Unit 01  
Level 08-15  
Level 17-38



Tower 2

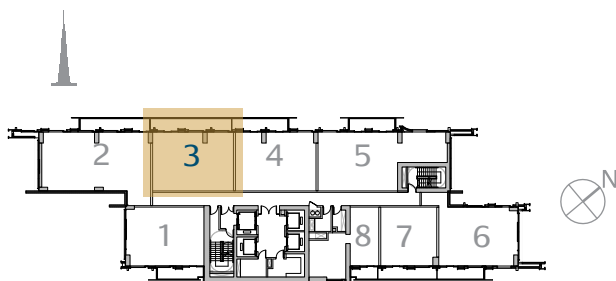
	sq.m	sq.ft
Suite Area	85.86	924.19
Balcony Area	11.55	124.32
<b>Total Area</b>	<b>97.41</b>	<b>1048.51</b>



**FLOOR PLANS** 1. All dimensions are in imperial and metric, and measured to structural elements and exclude wall finishes and construction tolerances. 2. All materials, dimensions, and drawings are approximate only. 3. Information is subject to change without notice, at developer's absolute discretion. 4. Actual area may vary from the stated area. 5. Drawings not to scale. 6. All images used are for illustrative purposes only and do not represent the actual size, features, specifications, fittings, and furnishings. 7. The developer reserves the right to make revisions/alterations at its absolute discretion, without any liability whatsoever.

# 2 Bedroom Type 2B.C

Unit 03  
Level 08-15



	sq.m	sq.ft
Suite Area	88.95	957.45
Balcony Area	19.79	213.02
<b>Total Area</b>	<b>108.74</b>	<b>1170.47</b>

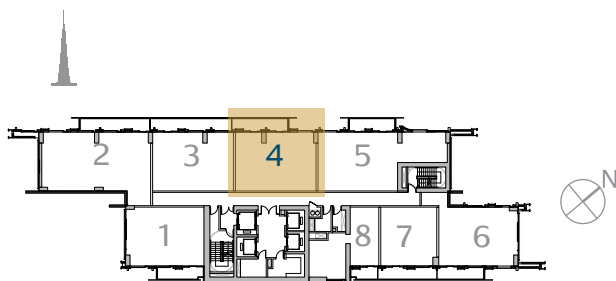
Tower 2



**FLOOR PLANS** 1. All dimensions are in imperial and metric, and measured to structural elements and exclude wall finishes and construction tolerances. 2. All materials, dimensions, and drawings are approximate only. 3. Information is subject to change without notice, at developer's absolute discretion. 4. Actual area may vary from the stated area. 5. Drawings not to scale. 6. All images used are for illustrative purposes only and do not represent the actual size, features, specifications, fittings, and furnishings. 7. The developer reserves the right to make revisions/alterations at its absolute discretion, without any liability whatsoever.

# 2 Bedroom Type 2B.D

Unit 04  
Level 08-15



	sq.m	sq.ft
Suite Area	88.30	950.45
Balcony Area	13.80	148.54
<b>Total Area</b>	<b>102.10</b>	<b>1098.99</b>

Tower 2



**FLOOR PLANS** 1. All dimensions are in imperial and metric, and measured to structural elements and exclude wall finishes and construction tolerances. 2. All materials, dimensions, and drawings are approximate only. 3. Information is subject to change without notice, at developer's absolute discretion. 4. Actual area may vary from the stated area. 5. Drawings not to scale. 6. All images used are for illustrative purposes only and do not represent the actual size, features, specifications, fittings, and furnishings. 7. The developer reserves the right to make revisions/alterations at its absolute discretion, without any liability whatsoever.

# 2 Bedroom Type 2B.E

Unit 03  
Level 17-38



	sq.m	sq.ft
Suite Area	91.40	983.82
Balcony Area	20.85	224.43
<b>Total Area</b>	<b>112.25</b>	<b>1208.25</b>

Tower 2

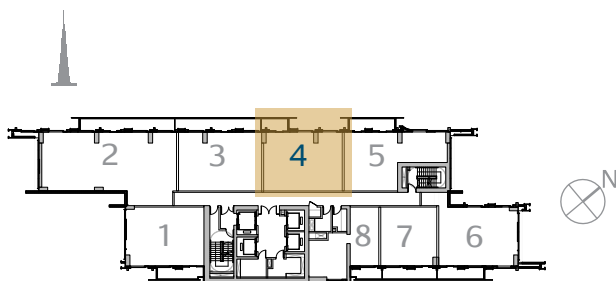


**FLOOR PLANS** 1. All dimensions are in imperial and metric, and measured to structural elements and exclude wall finishes and construction tolerances. 2. All materials, dimensions, and drawings are approximate only. 3. Information is subject to change without notice, at developer's absolute discretion. 4. Actual area may vary from the stated area. 5. Drawings not to scale. 6. All images used are for illustrative purposes only and do not represent the actual size, features, specifications, fittings, and furnishings. 7. The developer reserves the right to make revisions/alterations at its absolute discretion, without any liability whatsoever.



# 2 Bedroom Type 2B.F

Unit 04  
Level 17-38



	sq.m	sq.ft
Suite Area	86.00	925.70
Balcony Area	6.78	72.98
<b>Total Area</b>	<b>92.78</b>	<b>998.68</b>

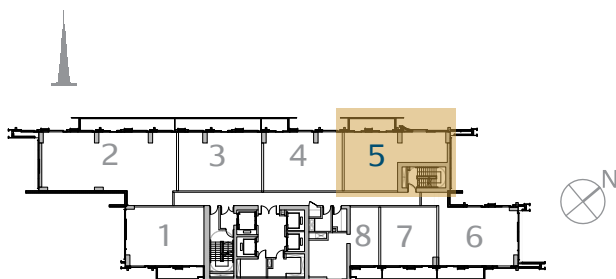
Tower 2



**FLOOR PLANS** 1. All dimensions are in imperial and metric, and measured to structural elements and exclude wall finishes and construction tolerances. 2. All materials, dimensions, and drawings are approximate only. 3. Information is subject to change without notice, at developer's absolute discretion. 4. Actual area may vary from the stated area. 5. Drawings not to scale. 6. All images used are for illustrative purposes only and do not represent the actual size, features, specifications, fittings, and furnishings. 7. The developer reserves the right to make revisions/alterations at its absolute discretion, without any liability whatsoever.

# 2 Bedroom Type 2B.G

Unit 05  
Level 17-38



	sq.m	sq.ft
Suite Area	89.25	960.68
Balcony Area	11.36	122.28
<b>Total Area</b>	<b>100.61</b>	<b>1082.96</b>

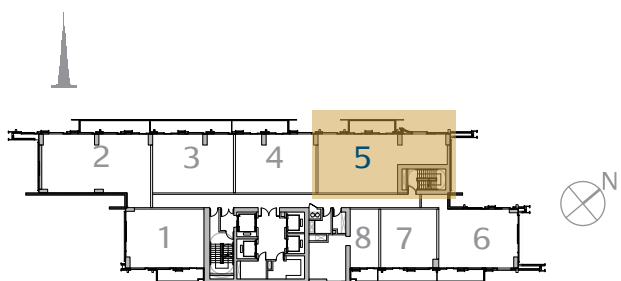
Tower 2



**FLOOR PLANS** 1. All dimensions are in imperial and metric, and measured to structural elements and exclude wall finishes and construction tolerances. 2. All materials, dimensions, and drawings are approximate only. 3. Information is subject to change without notice, at developer's absolute discretion. 4. Actual area may vary from the stated area. 5. Drawings not to scale. 6. All images used are for illustrative purposes only and do not represent the actual size, features, specifications, fittings, and furnishings. 7. The developer reserves the right to make revisions/alterations at its absolute discretion, without any liability whatsoever.

# 3 Bedroom Type 3B.A

Unit 05  
Level 08-15



	sq.m	sq.ft
Suite Area	118.46	1275.09
Balcony Area	11.47	123.46
<b>Total Area</b>	<b>129.93</b>	<b>1398.55</b>

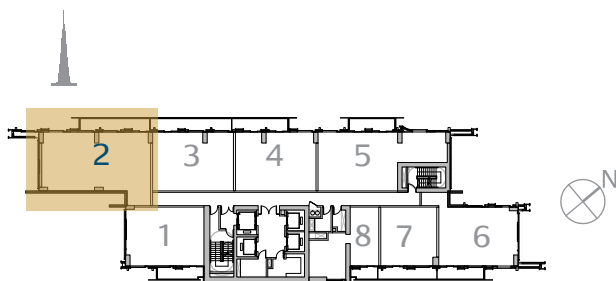
Tower 2



**FLOOR PLANS** 1. All dimensions are in imperial and metric, and measured to structural elements and exclude wall finishes and construction tolerances. 2. All materials, dimensions, and drawings are approximate only. 3. Information is subject to change without notice, at developer's absolute discretion. 4. Actual area may vary from the stated area. 5. Drawings not to scale. 6. All images used are for illustrative purposes only and do not represent the actual size, features, specifications, fittings, and furnishings. 7. The developer reserves the right to make revisions/alterations at its absolute discretion, without any liability whatsoever.

# 3 Bedroom Type 3B.B

Unit 02  
Level 08-15



	sq.m	sq.ft
Suite Area	126.41	1360.67
Balcony Area	17.06	183.63
<b>Total Area</b>	<b>143.47</b>	<b>1544.30</b>

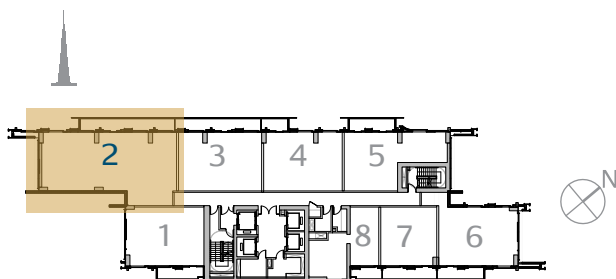
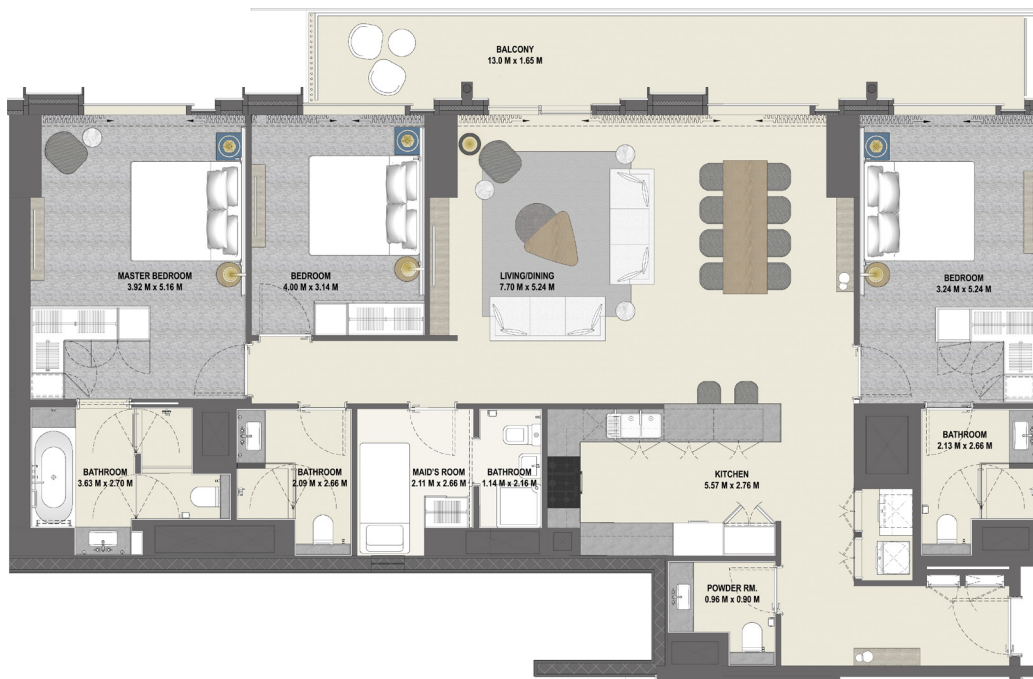
Tower 2



**FLOOR PLANS** 1. All dimensions are in imperial and metric, and measured to structural elements and exclude wall finishes and construction tolerances. 2. All materials, dimensions, and drawings are approximate only. 3. Information is subject to change without notice, at developer's absolute discretion. 4. Actual area may vary from the stated area. 5. Drawings not to scale. 6. All images used are for illustrative purposes only and do not represent the actual size, features, specifications, fittings, and furnishings. 7. The developer reserves the right to make revisions/alterations at its absolute discretion, without any liability whatsoever.

# 3 Bedroom Type 3B.C

Unit 02  
Level 17-38



	sq.m	sq.ft
Suite Area	160.03	1722.55
Balcony Area	23.11	248.75
<b>Total Area</b>	<b>183.14</b>	<b>1971.30</b>

Tower 2



**FLOOR PLANS** 1. All dimensions are in imperial and metric, and measured to structural elements and exclude wall finishes and construction tolerances. 2. All materials, dimensions, and drawings are approximate only. 3. Information is subject to change without notice, at developer's absolute discretion. 4. Actual area may vary from the stated area. 5. Drawings not to scale. 6. All images used are for illustrative purposes only and do not represent the actual size, features, specifications, fittings, and furnishings. 7. The developer reserves the right to make revisions/alterations at its absolute discretion, without any liability whatsoever.



## **CONTACT US**

**Toll Free : 800 37373**

**Hotline : +971 52 754 3244**

**Email : sales@drehomes.com**

**Visit Us For More Info:-**

**<https://drehomes.com/property/emaar-vida-dubai-mal-downtown/>**