

LIVE IN
**DUBAI
SOUTH**
RESIDENTIAL
DISTRICT

THE PULSE VILLAS

A development by

دبي الجنوب
**DUBAI
SOUTH**



THE PULSE VILLAS

A development by



FLOOR PLAN

TWO BEDROOM

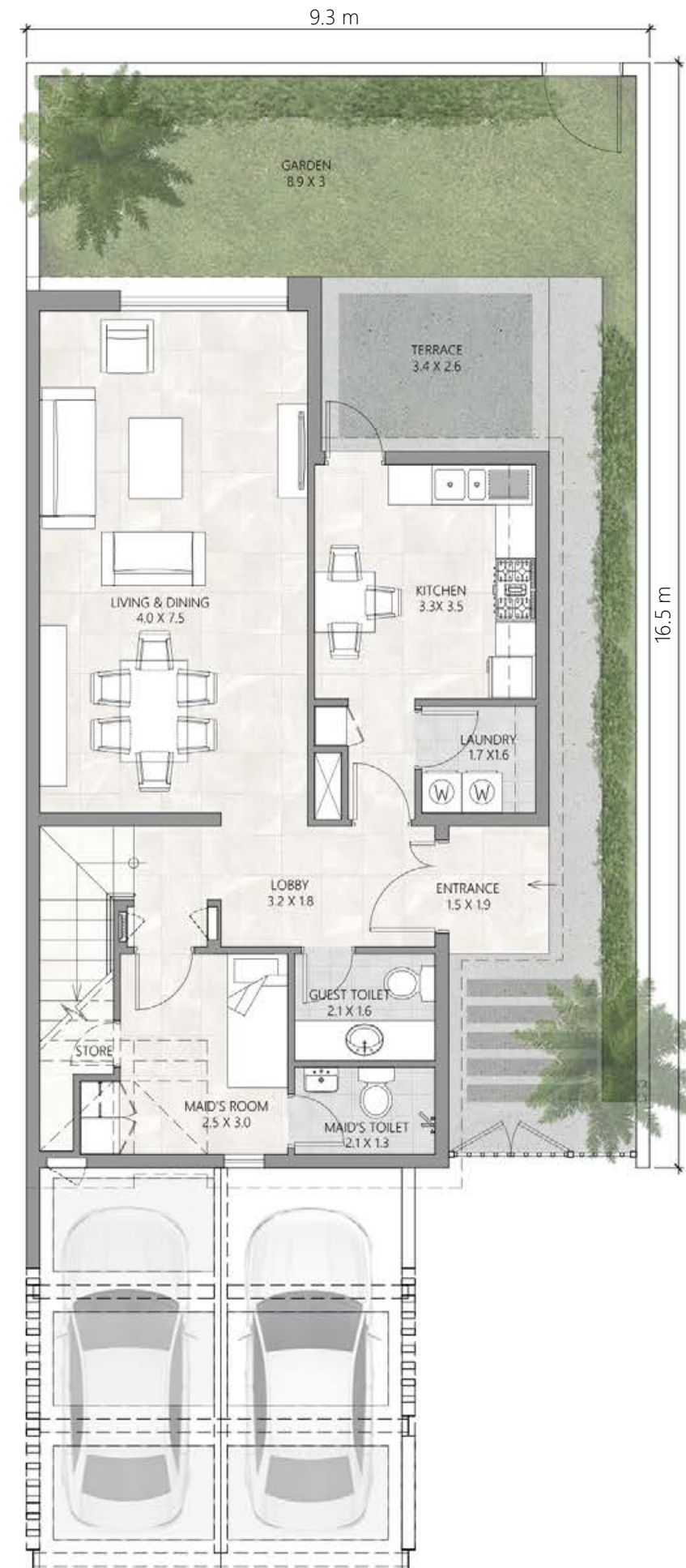
CORNER TYPE

BUA 1,894.8 SQ. FT.
GARDEN 688.7 SQ. FT.

THE PULSE VILLAS

A development by  **DUBAI SOUTH**

GROUND LEVEL PLAN



FIRST LEVEL PLAN



FLOOR PLAN

TWO BEDROOM

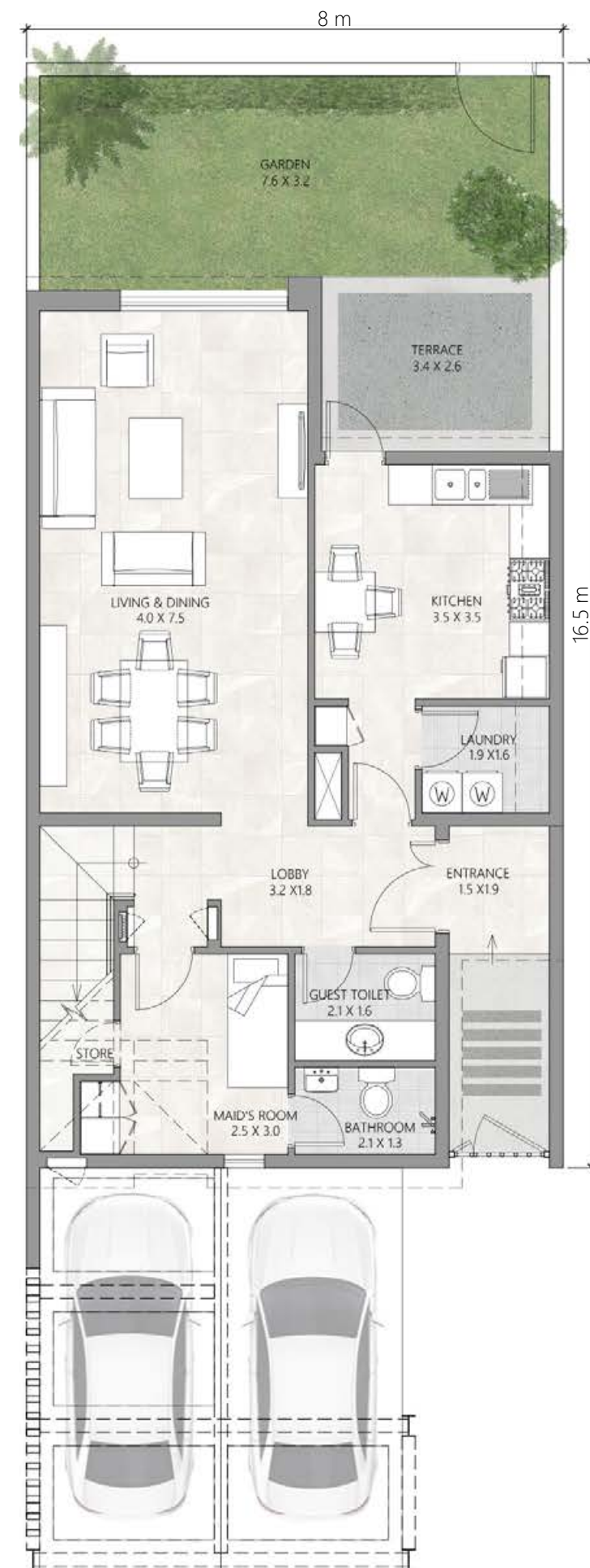
MIDDLE TYPE

BUA 1,900.6 SQ. FT.
GARDEN 533.8 SQ. FT.

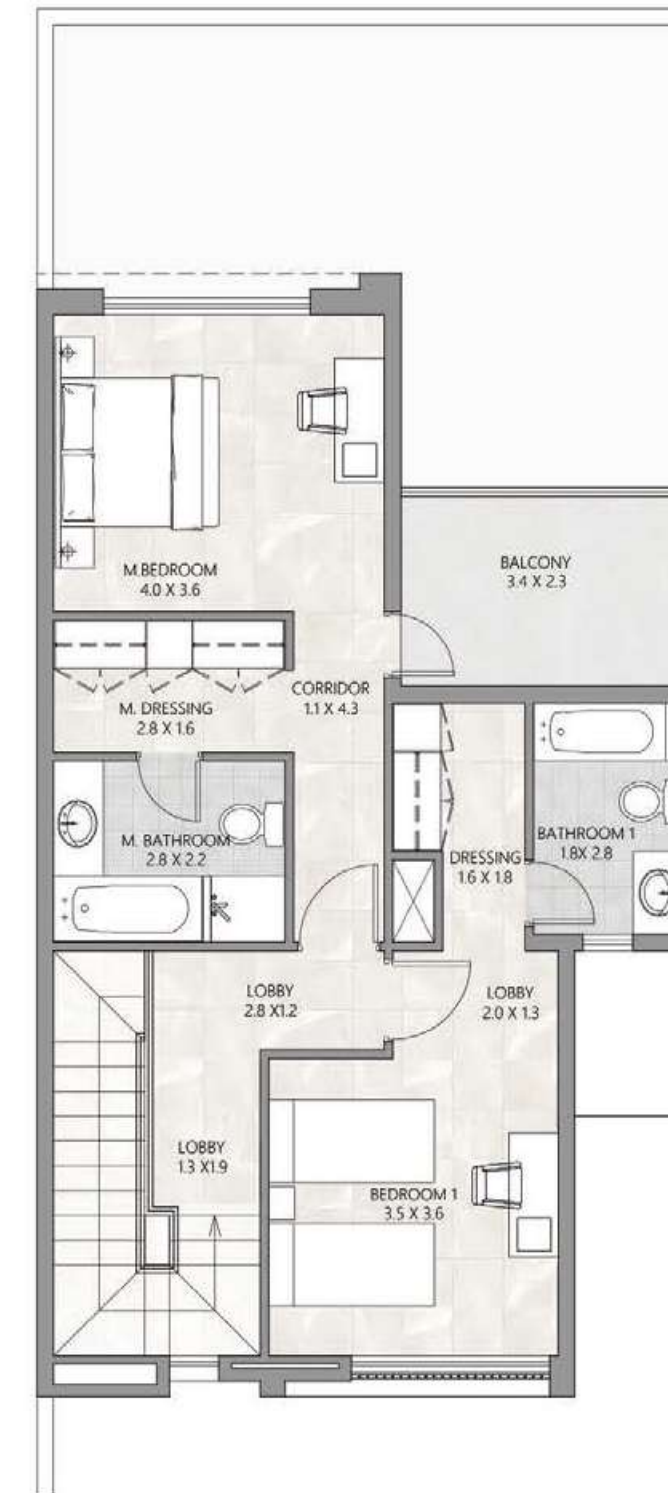
THE PULSE VILLAS

A development by  **DUBAI SOUTH**

GROUND LEVEL PLAN



FIRST LEVEL PLAN



FLOOR PLAN

THREE BEDROOM-A

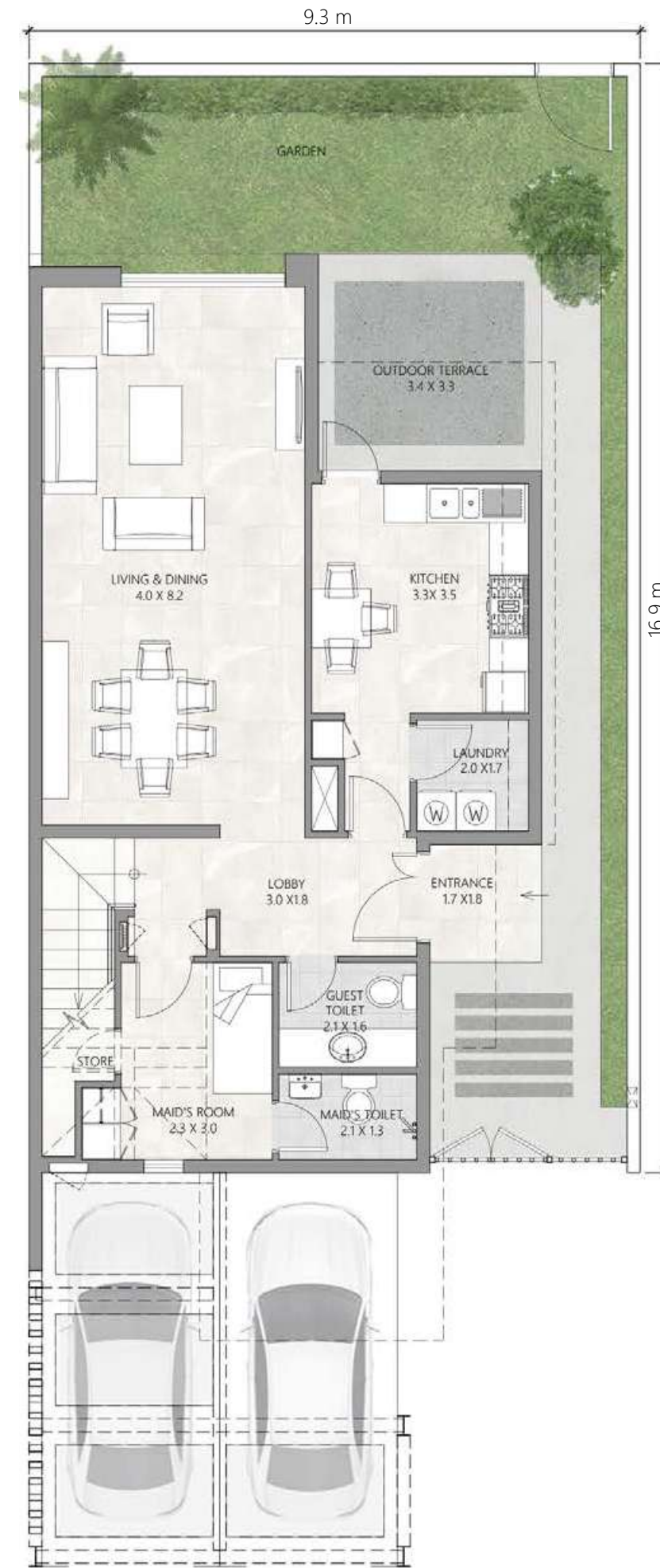
CORNER TYPE

BUA 2,117.6 SQ. FT.
GARDEN 678.4 SQ. FT.

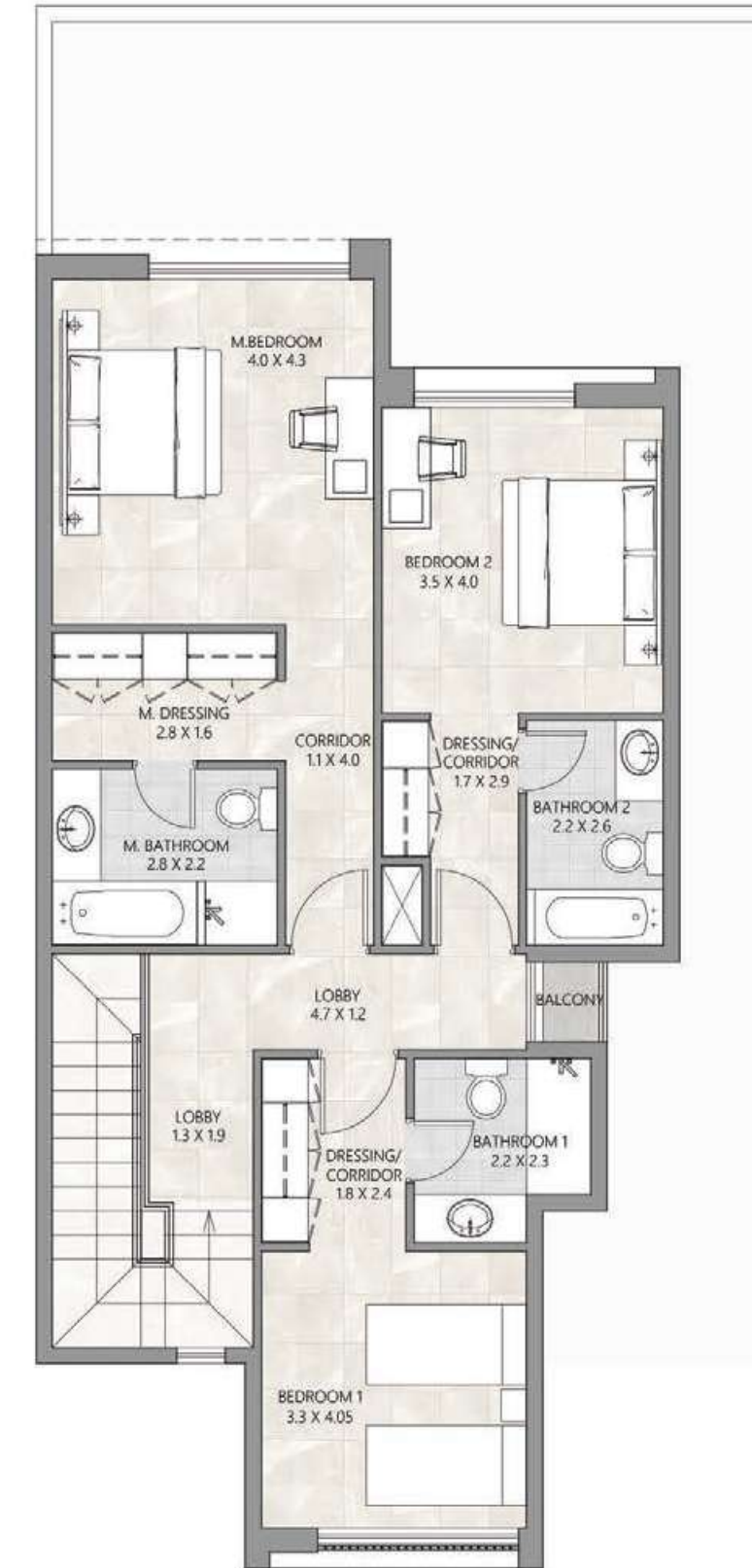
THE PULSE VILLAS

A development by  DUBAI SOUTH

GROUND LEVEL PLAN



FIRST LEVEL PLAN



FLOOR PLAN

THREE BEDROOM-A

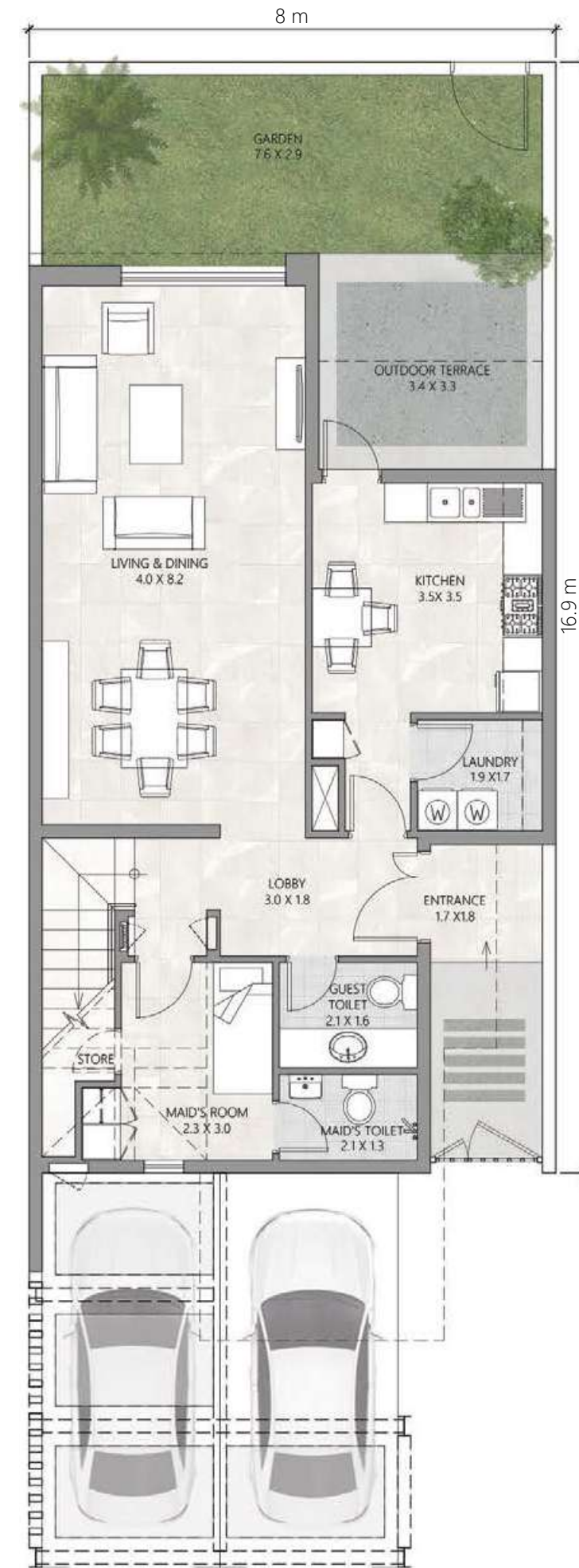
MIDDLE TYPE

BUA 2,129.8 SQ. FT.
GARDEN 460.2 SQ. FT.

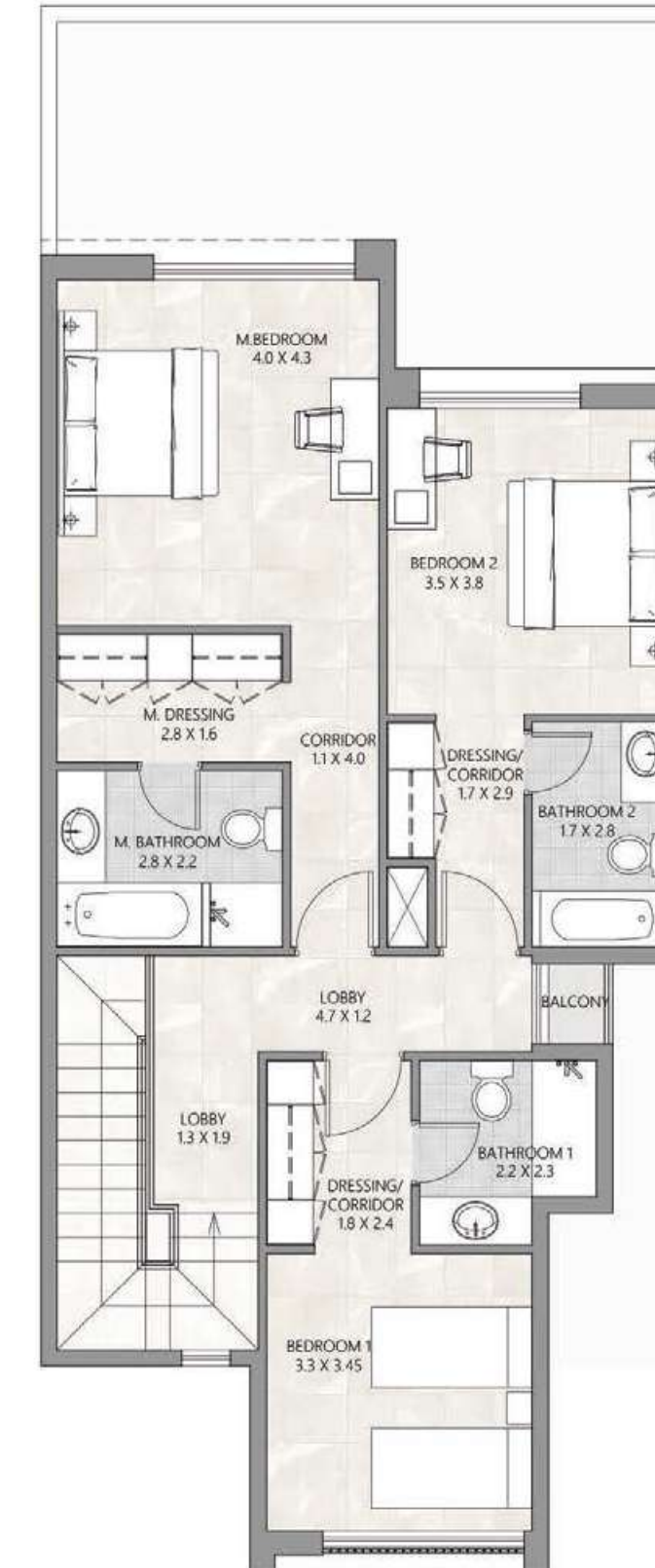
THE PULSE VILLAS

A development by  DUBAI SOUTH

GROUND LEVEL PLAN



FIRST LEVEL PLAN



FLOOR PLAN

THREE BEDROOM-B

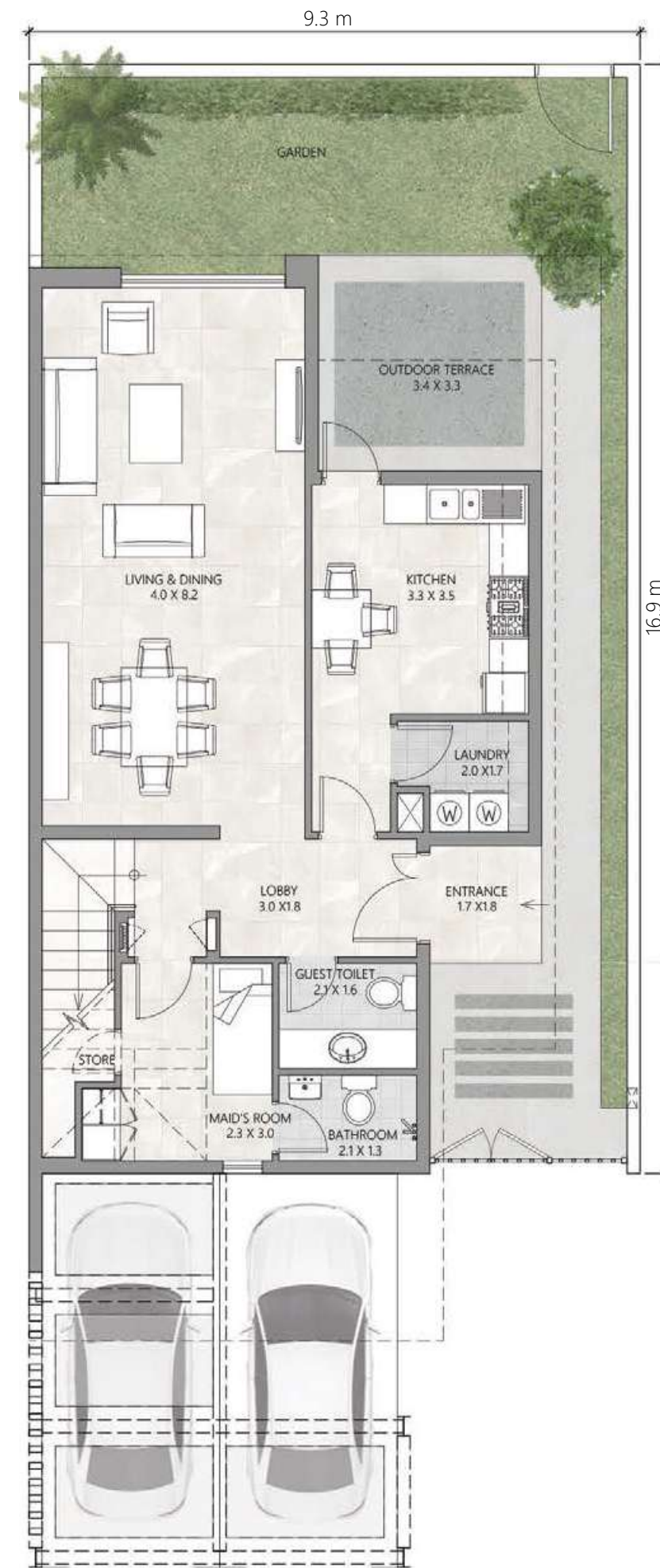
CORNER TYPE

BUA 2,218.9 SQ. FT.
GARDEN 763.7 SQ. FT.

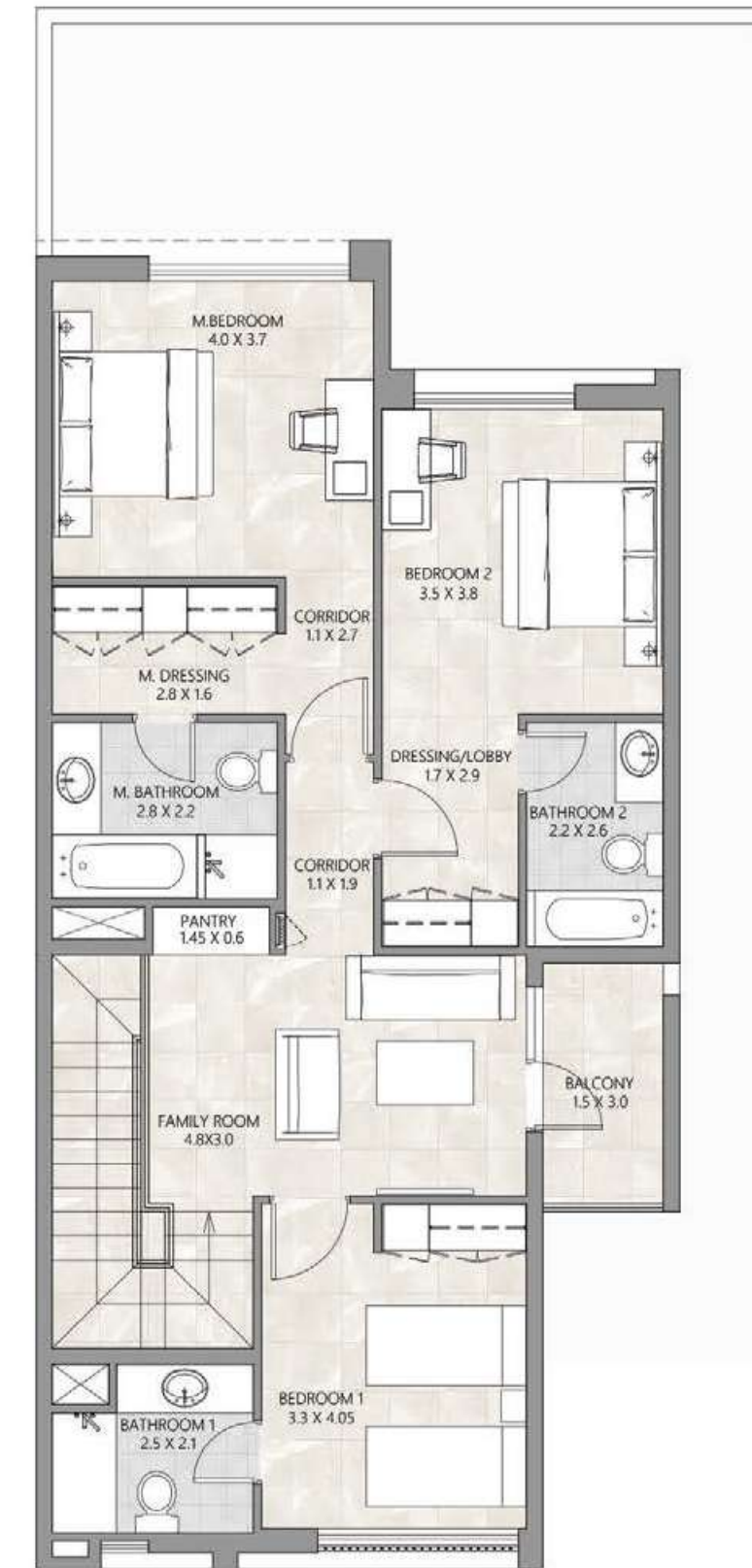
THE PULSE VILLAS

A development by  DUBAI SOUTH

GROUND LEVEL PLAN



FIRST LEVEL PLAN



FLOOR PLAN

THREE BEDROOM-B

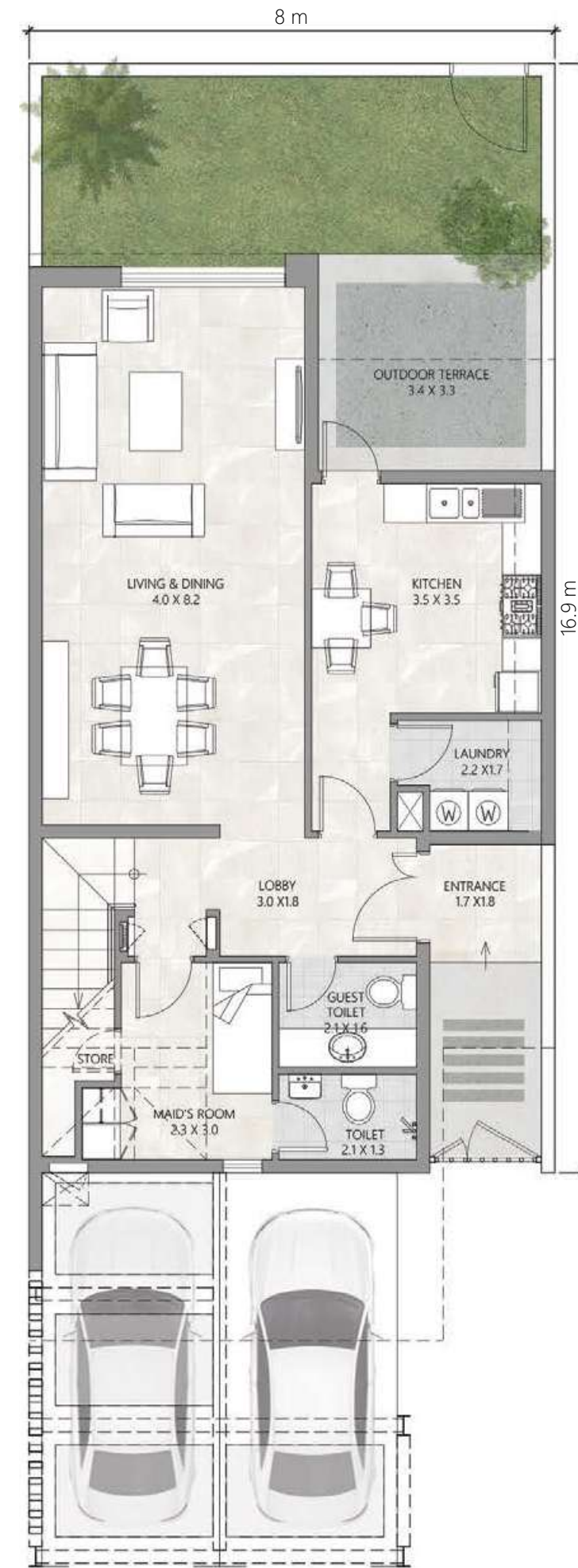
MIDDLE TYPE

BUA 2,225.1 SQ. FT.
GARDEN 533.8 SQ. FT.

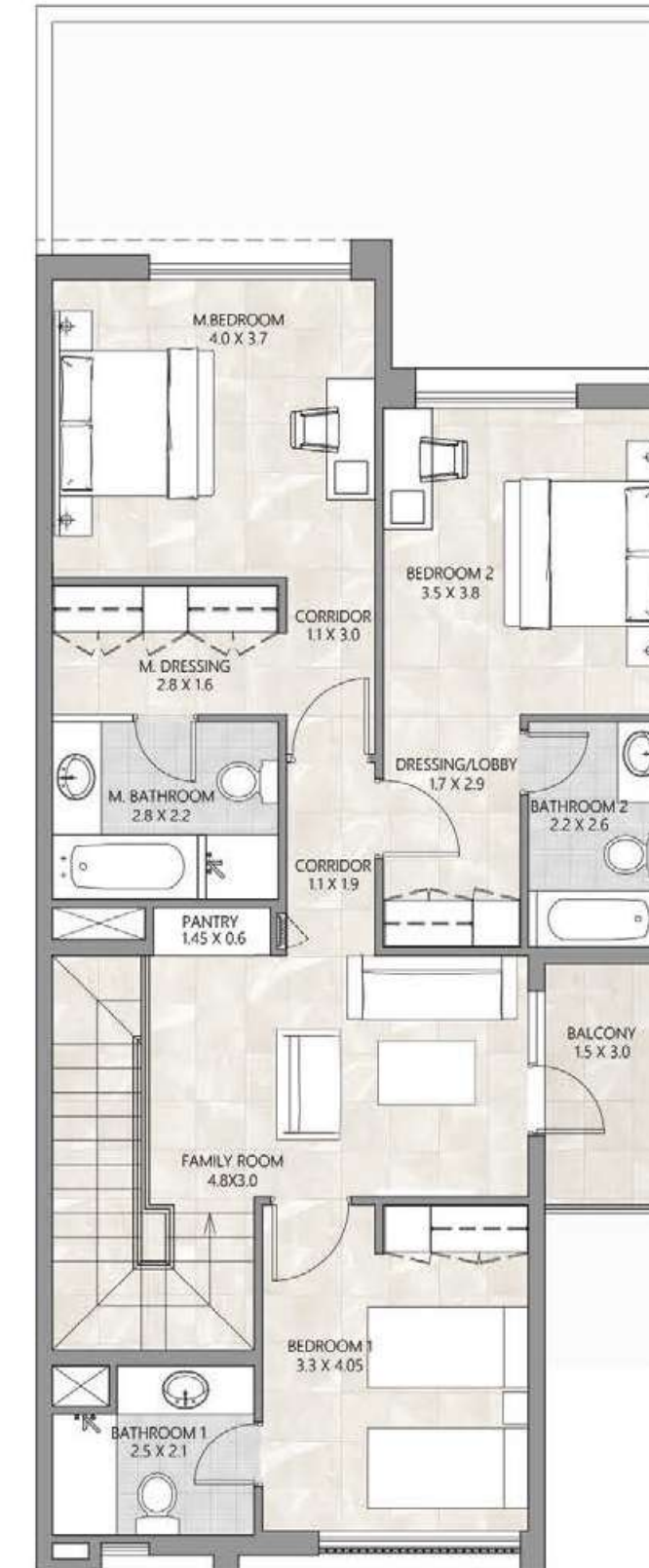
THE PULSE VILLAS

A development by  DUBAI SOUTH

GROUND LEVEL PLAN



FIRST LEVEL PLAN



FLOOR PLAN

FOUR BEDROOM

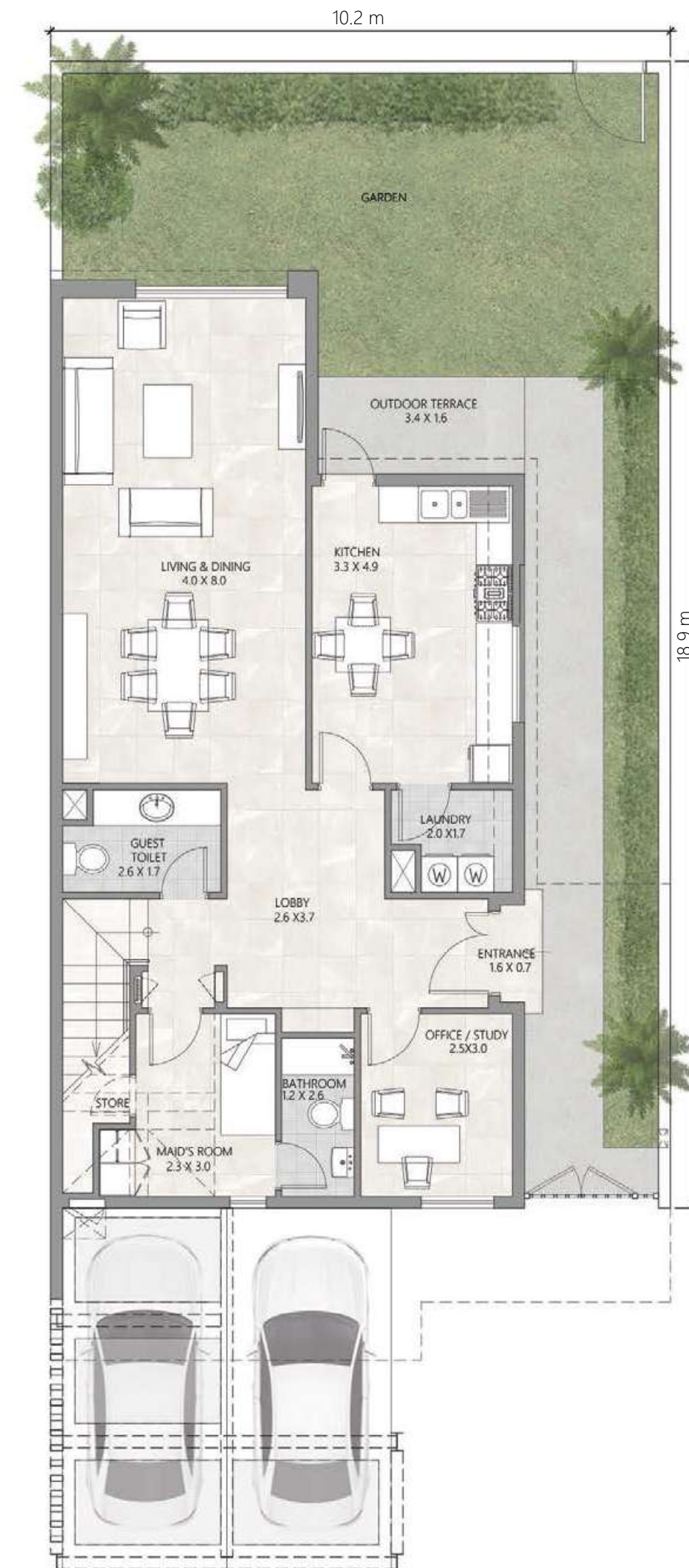
CORNER TYPE

BUA 2,173.3 SQ. FT.
GARDEN 1,176.2 SQ. FT.

THE PULSE VILLAS

A development by  DUBAI SOUTH

GROUND LEVEL PLAN



FIRST LEVEL PLAN

