

DUBAI CREEK

HARBOUR

CREEK EDGE

FLOOR PLANS

EMAAR

TOWER 1

EMAAR

DUBAI CREEK HARBOUR

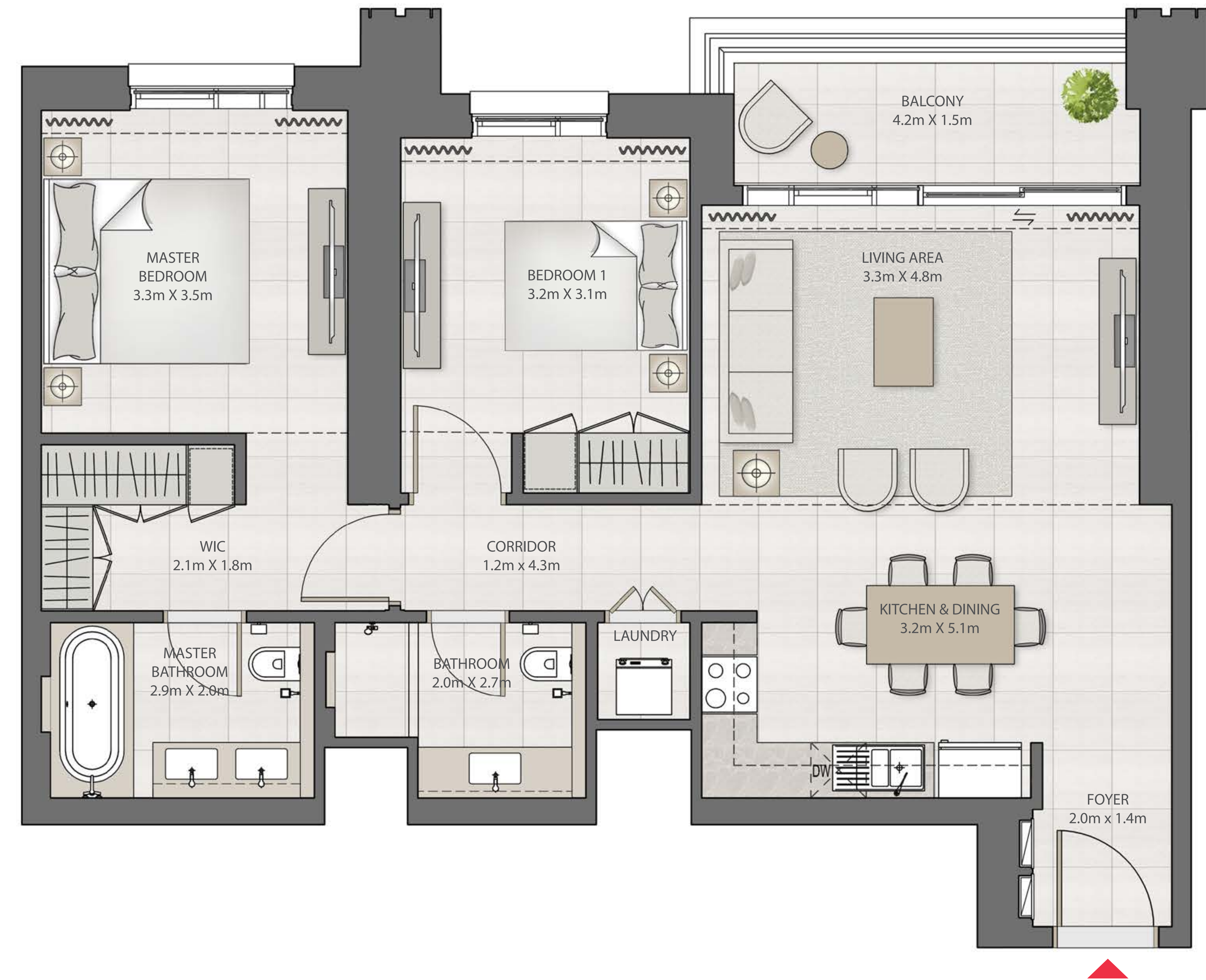
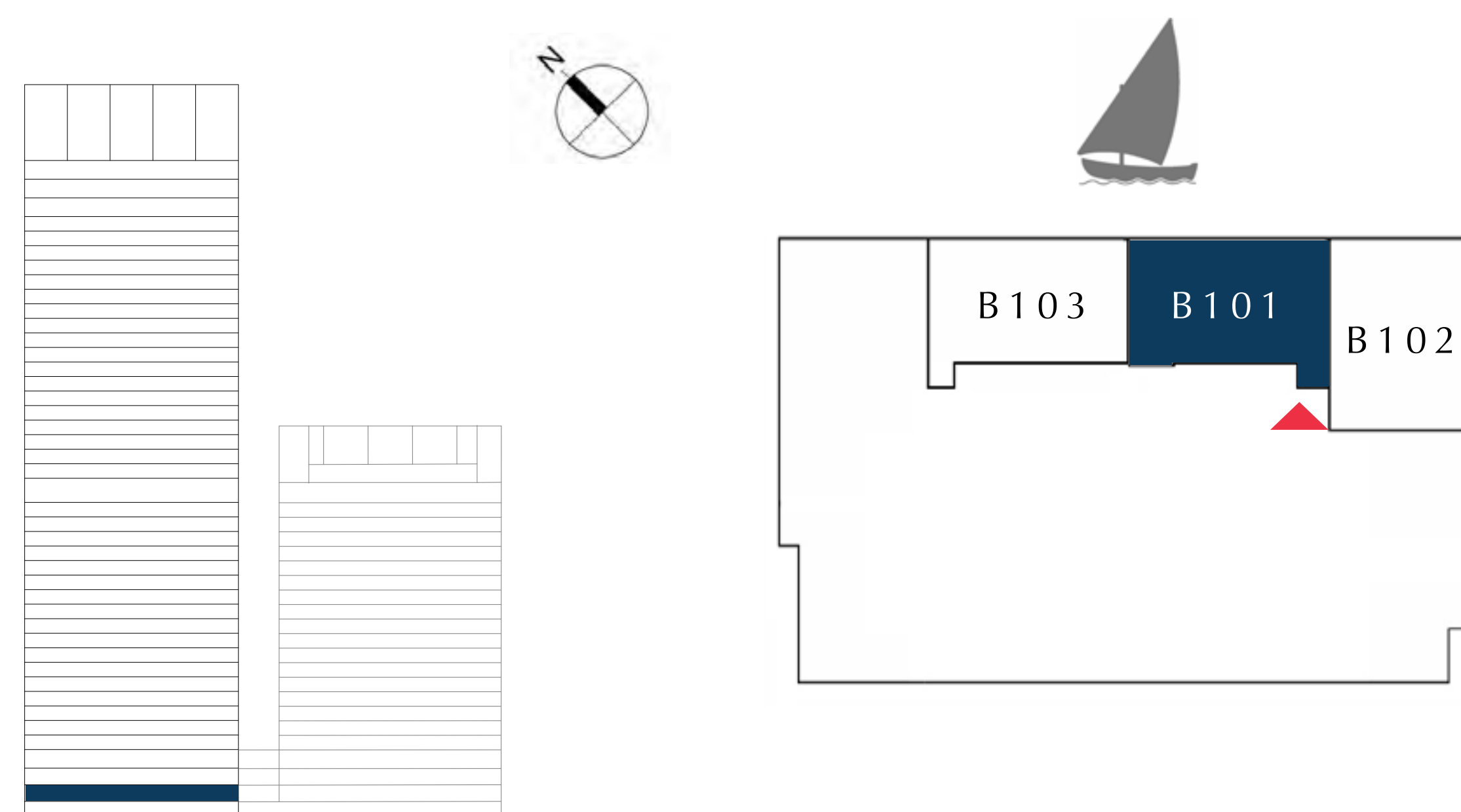
CREEK EDGE

TOWER 1

2 BEDROOM

UNIT B101 | LOWER GROUND

SUITE AREA	1002.12 SQ.FT.	93.10 SQ.M.
BALCONY AREA	75.89 SQ.FT.	7.05 SQ.M.
TOTAL AREA	1078.01 SQ.FT.	100.15 SQ.M.



FLOOR PLAN 1. All dimensions are in imperial and metric, and measured from finish to finish excluding construction tolerances. 2. All materials, dimensions, and drawings are approximate only. 3. Information is subject to change without notice, at developer's absolute discretion. 4. Actual area may vary from the stated area. 5. Drawings not to scale. 6. All images used are for illustrative purposes only and do not represent the actual size, features, specifications, fittings, and furnishings. 7. The developer reserves the right to make revisions / alterations, at it's absolute discretion, without any liability whatsoever.

DUBAI CREEK HARBOUR

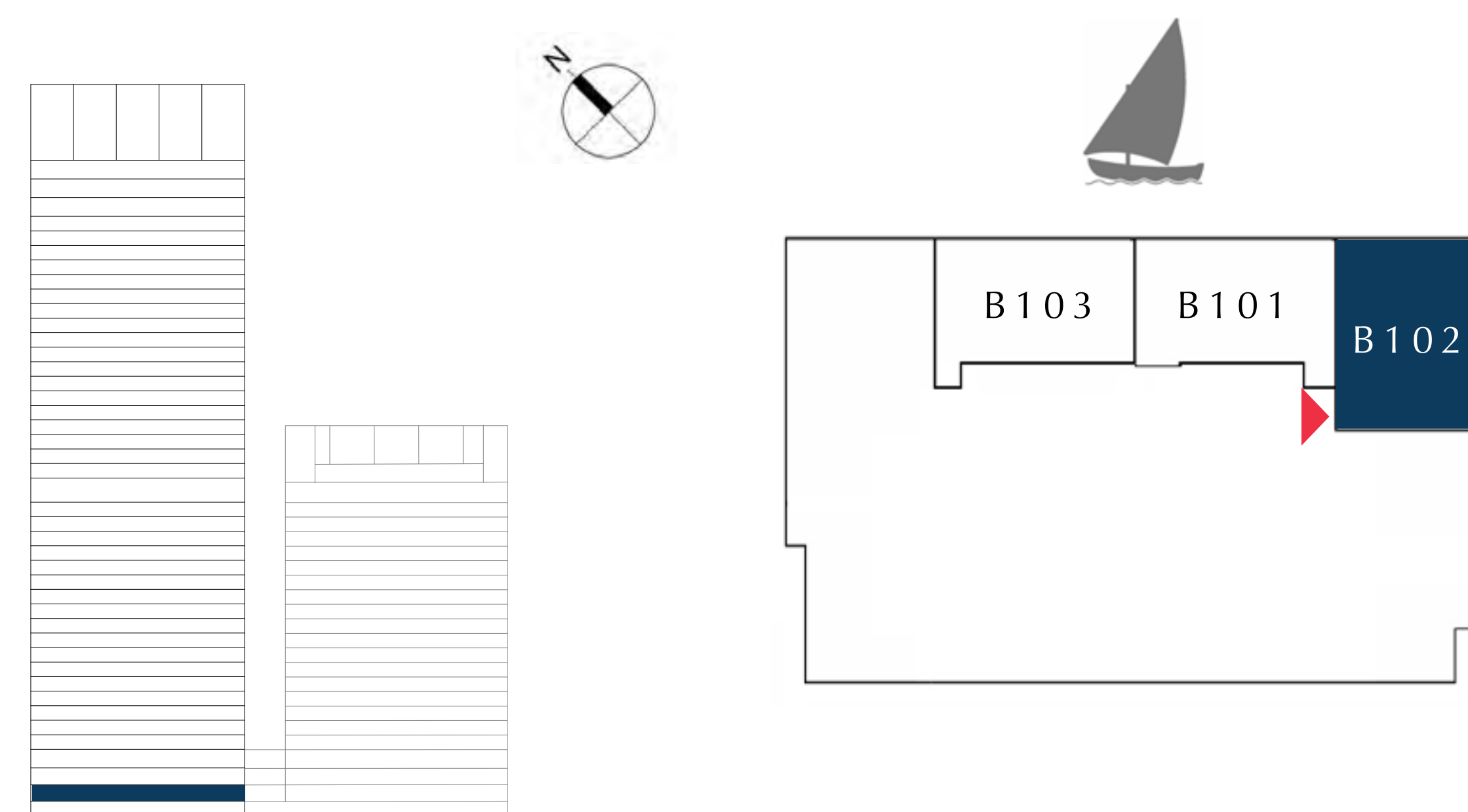
CREEK EDGE

TOWER 1

2 BEDROOM

UNIT B102 | LOWER GROUND

SUITE AREA	1030.32 SQ.FT.	95.72 SQ.M.
BALCONY AREA	266.51 SQ.FT.	24.76 SQ.M.
TOTAL AREA	1296.83 SQ.FT.	120.48 SQ.M.



FLOOR PLAN 1. All dimensions are in imperial and metric, and measured from finish to finish excluding construction tolerances. 2. All materials, dimensions, and drawings are approximate only. 3. Information is subject to change without notice, at developer's absolute discretion. 4. Actual area may vary from the stated area. 5. Drawings not to scale. 6. All images used are for illustrative purposes only and do not represent the actual size, features, specifications, fittings, and furnishings. 7. The developer reserves the right to make revisions / alterations, at it's absolute discretion, without any liability whatsoever.

DUBAI CREEK HARBOUR

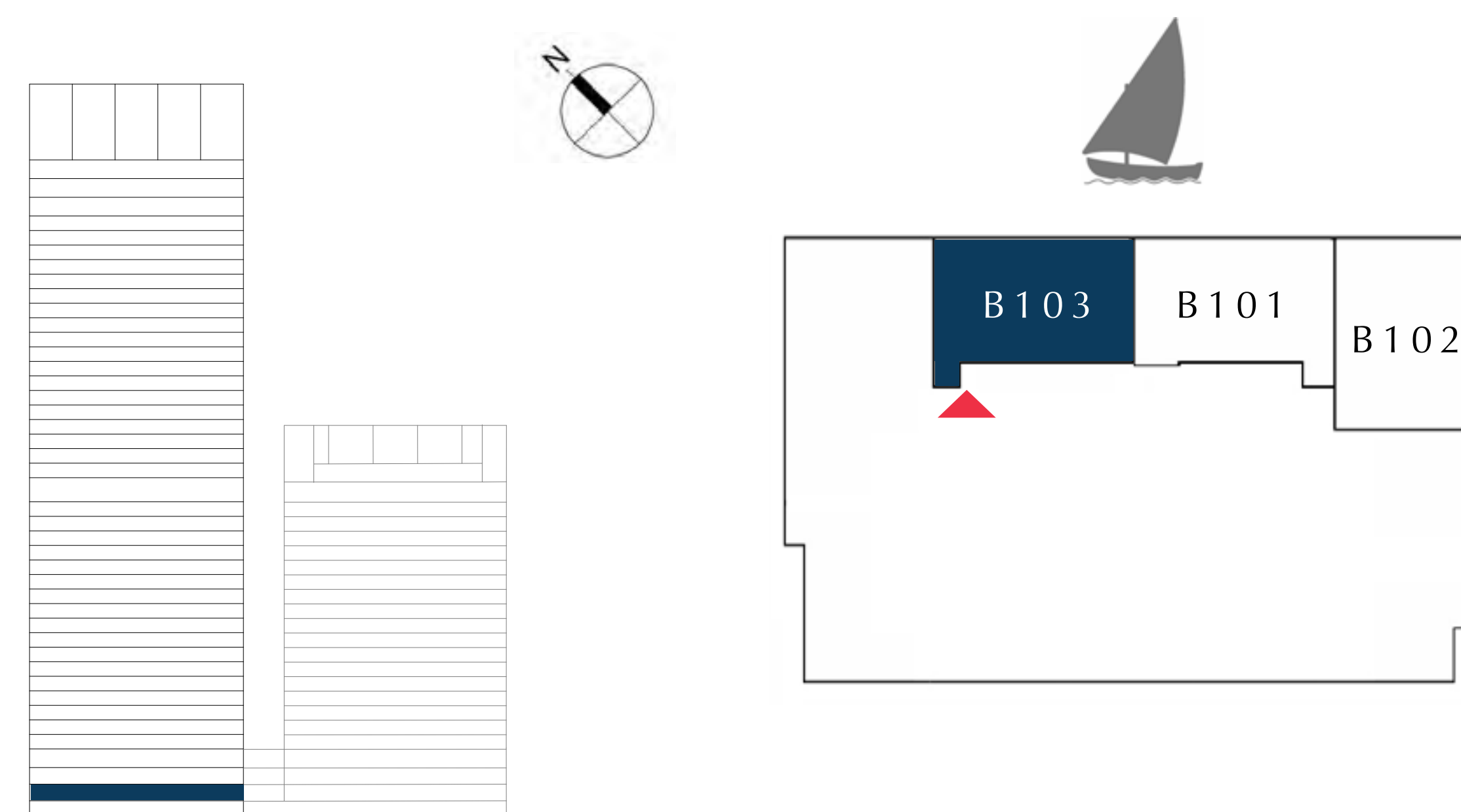
CREEK EDGE

TOWER 1

2 BEDROOM

UNIT B103 | LOWER GROUND

SUITE AREA	1002.44 SQ.FT.	93.13 SQ.M.
BALCONY AREA	75.89 SQ.FT.	7.05 SQ.M.
TOTAL AREA	1078.33 SQ.FT.	100.18 SQ.M.



FLOOR PLAN 1. All dimensions are in imperial and metric, and measured from finish to finish excluding construction tolerances. 2. All materials, dimensions, and drawings are approximate only. 3. Information is subject to change without notice, at developer's absolute discretion. 4. Actual area may vary from the stated area. 5. Drawings not to scale. 6. All images used are for illustrative purposes only and do not represent the actual size, features, specifications, fittings, and furnishings. 7. The developer reserves the right to make revisions / alterations, at it's absolute discretion, without any liability whatsoever.