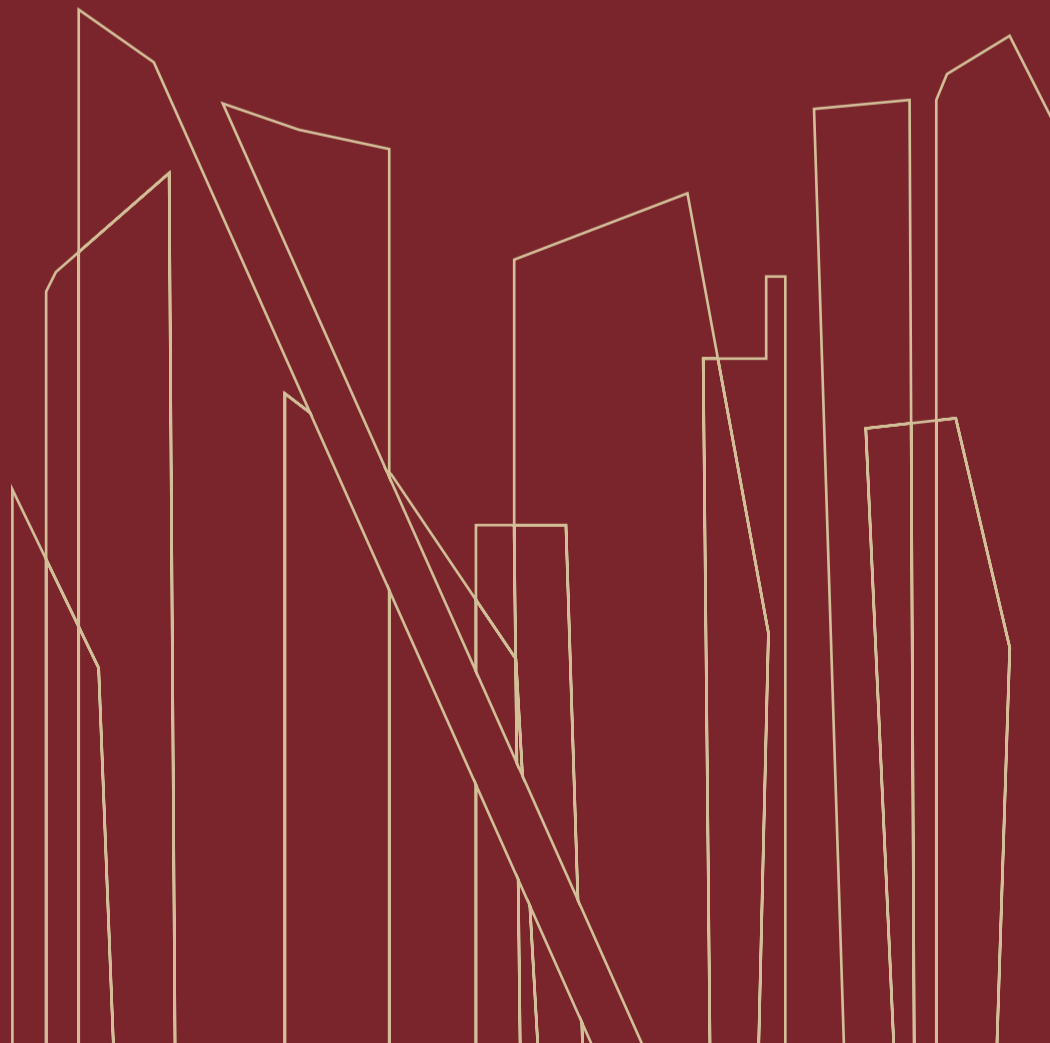


AYKON CITY

- INVESTOR PREVIEW PACK -



COMING TO **AYKON** CITY

TOWER A

AYKON HOTEL & SERVICED RESIDENCES

FLOOR PLANS

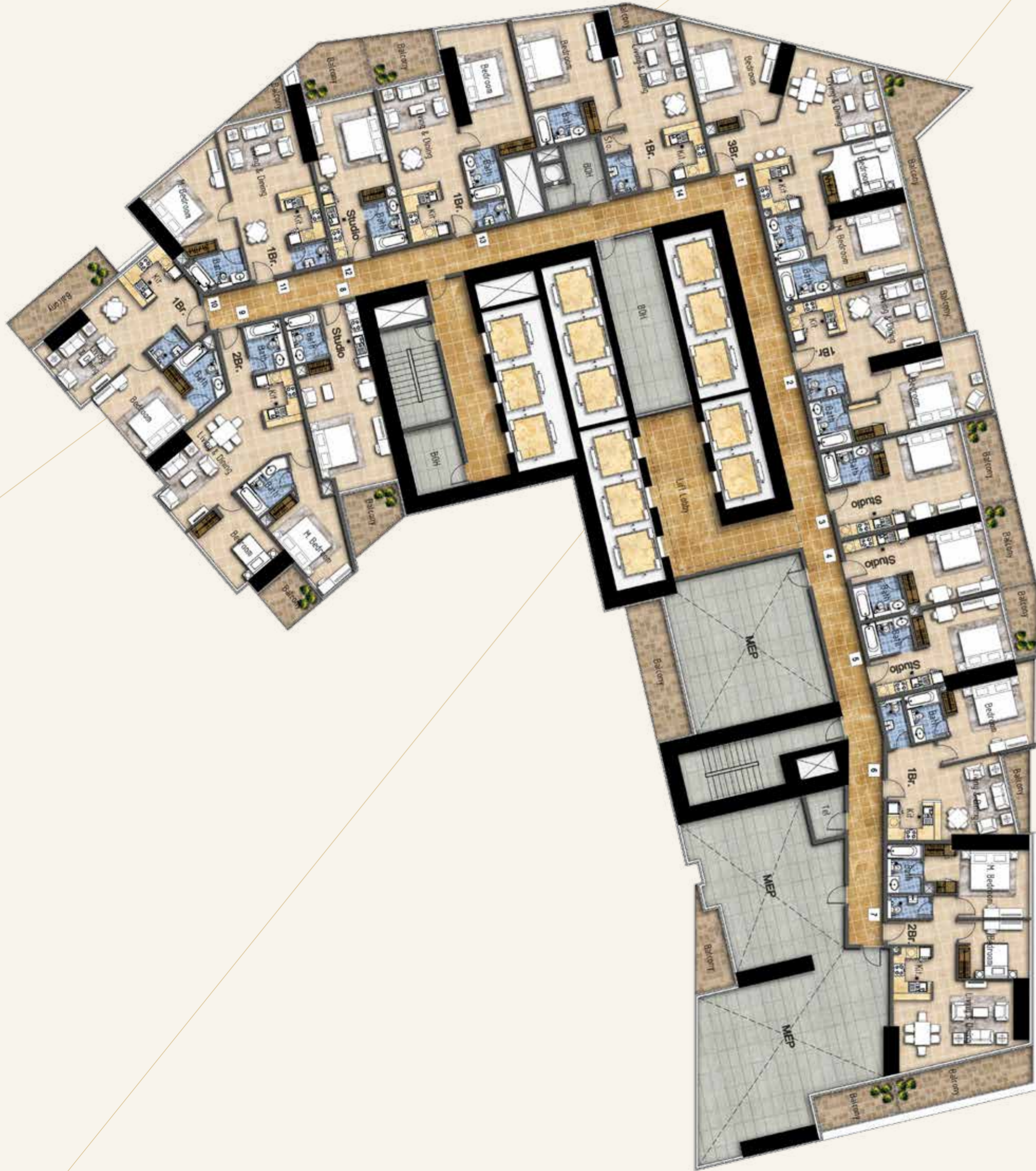
TOWER A - AYKON HOTEL & SERVICED RESIDENCES TYPICAL FLOOR 12-39

All pictures, plans, layouts, information, data and details included in this brochure are indicative only and may change at any time up to the final 'as built' status in accordance with final designs of the project, regulatory approvals and planning permissions.



TYPICAL FLOOR 40

All pictures, plans, layouts, information, data and details included in this brochure are indicative only and may change at any time up to the final 'as built' status in accordance with final designs of the project, regulatory approvals and planning permissions.



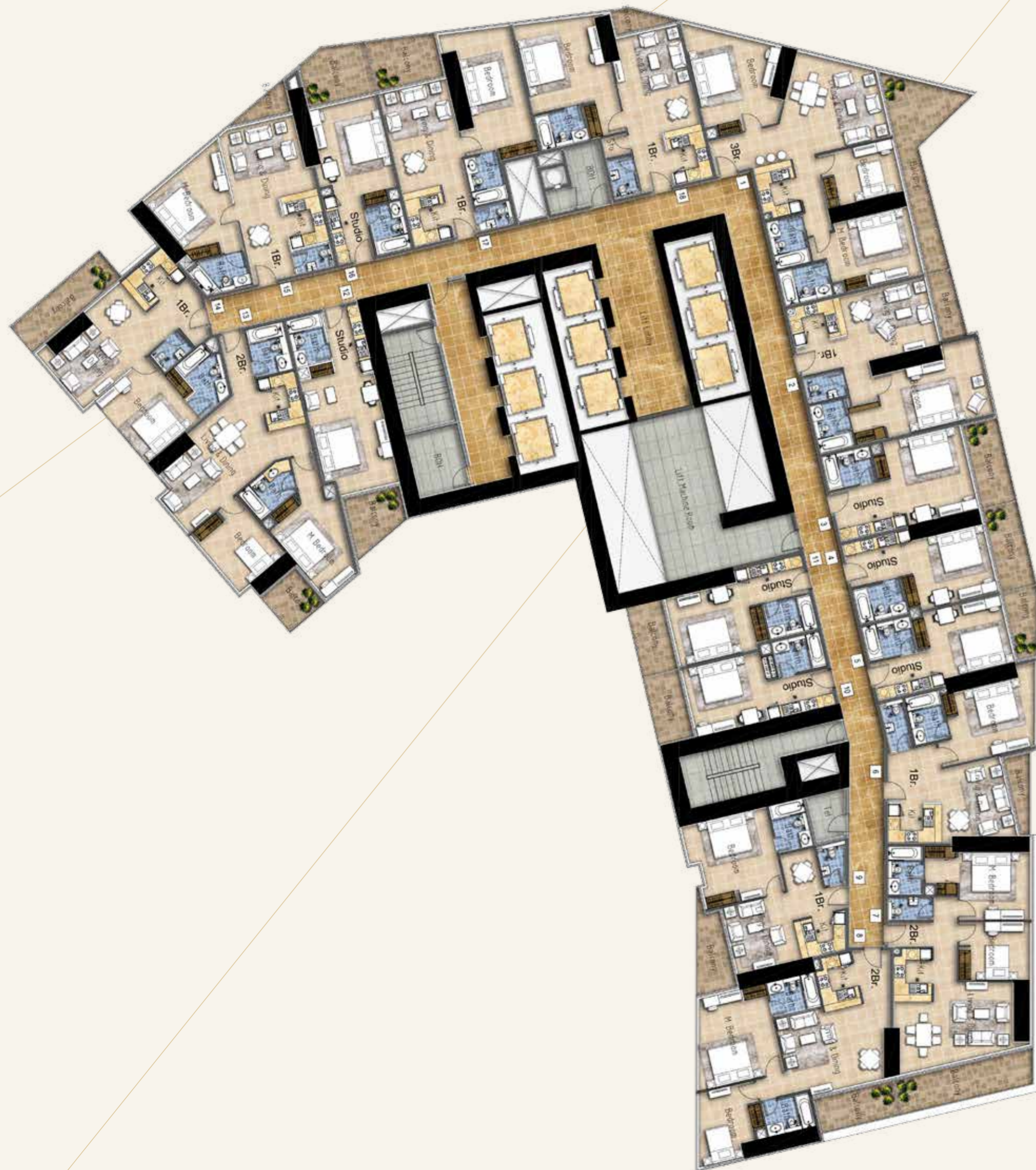
TYPICAL FLOOR 41

All pictures, plans, layouts, information, data and details included in this brochure are indicative only and may change at any time up to the final 'as built' status in accordance with final designs of the project, regulatory approvals and planning permissions.



TOWER A - AYKON HOTEL & SERVICED RESIDENCES
TYPICAL FLOOR **42-43**

All pictures, plans, layouts, information, data and details included in this brochure are indicative only and may change at any time up to the final 'as built' status in accordance with final designs of the project, regulatory approvals and planning permissions.



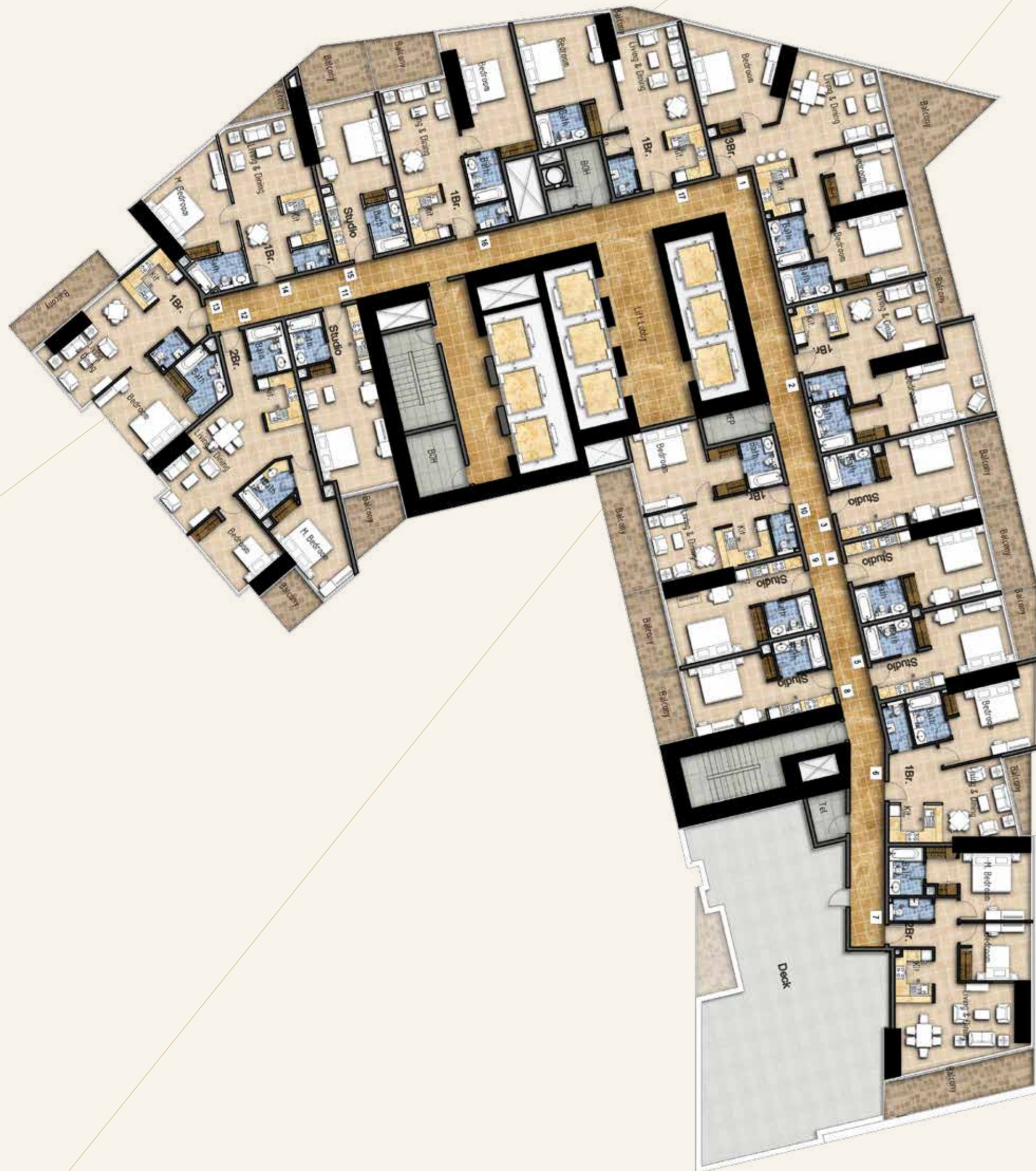
TOWER A - AYKON HOTEL & SERVICED RESIDENCES
TYPICAL FLOOR **44-56**

All pictures, plans, layouts, information, data and details included in this brochure are indicative only and may change at any time up to the final 'as built' status in accordance with final designs of the project, regulatory approvals and planning permissions.



TOWER A - AYKON HOTEL & SERVICED RESIDENCES
TYPICAL FLOOR **57**

All pictures, plans, layouts, information, data and details included in this brochure are indicative only and may change at any time up to the final 'as built' status in accordance with final designs of the project, regulatory approvals and planning permissions.



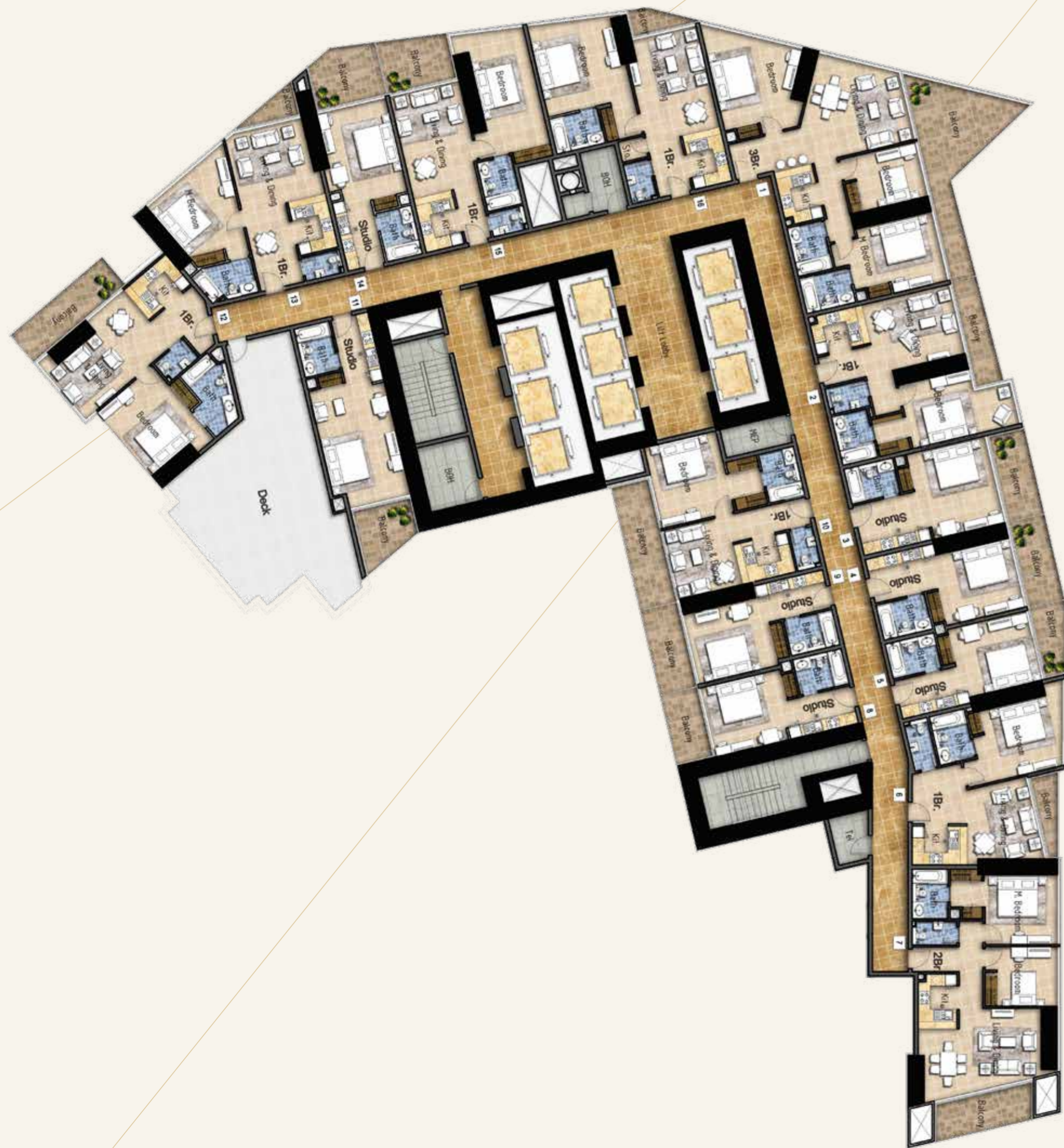
TOWER A - AYKON HOTEL & SERVICED RESIDENCES
TYPICAL FLOOR **58-62**

All pictures, plans, layouts, information, data and details included in this brochure are indicative only and may change at any time up to the final 'as built' status in accordance with final designs of the project, regulatory approvals and planning permissions.



TOWER A - AYKON HOTEL & SERVICED RESIDENCES
TYPICAL FLOOR **63**

All pictures, plans, layouts, information, data and details included in this brochure are indicative only and may change at any time up to the final 'as built' status in accordance with final designs of the project, regulatory approvals and planning permissions.



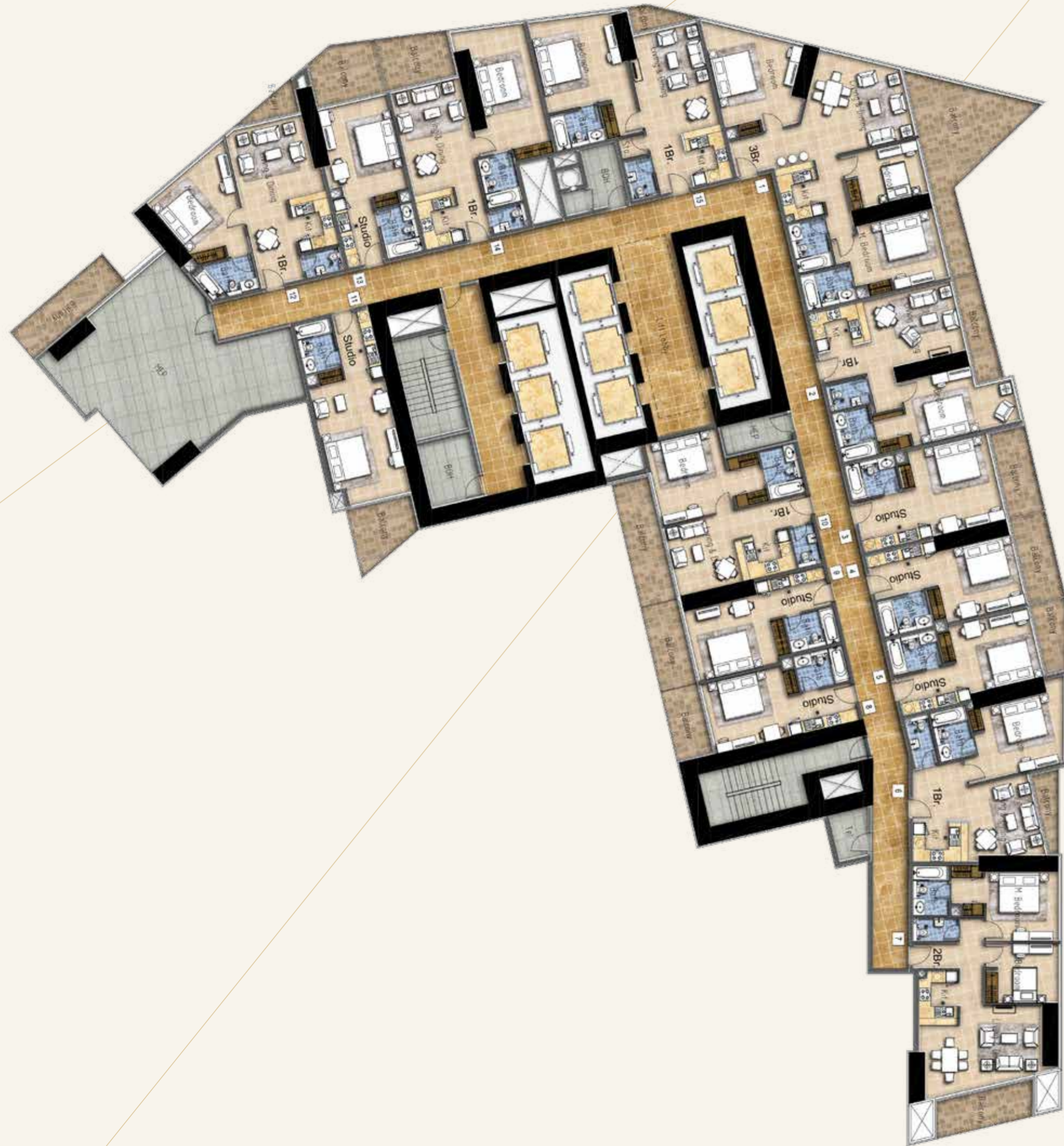
TOWER A - AYKON HOTEL & SERVICED RESIDENCES
TYPICAL FLOOR **64-69**

All pictures, plans, layouts, information, data and details included in this brochure are indicative only and may change at any time up to the final 'as built' status in accordance with final designs of the project, regulatory approvals and planning permissions.



TYPICAL FLOOR 70

All pictures, plans, layouts, information, data and details included in this brochure are indicative only and may change at any time up to the final 'as built' status in accordance with final designs of the project, regulatory approvals and planning permissions.



TOWER B

HOTEL APARTMENTS

FLOOR PLANS

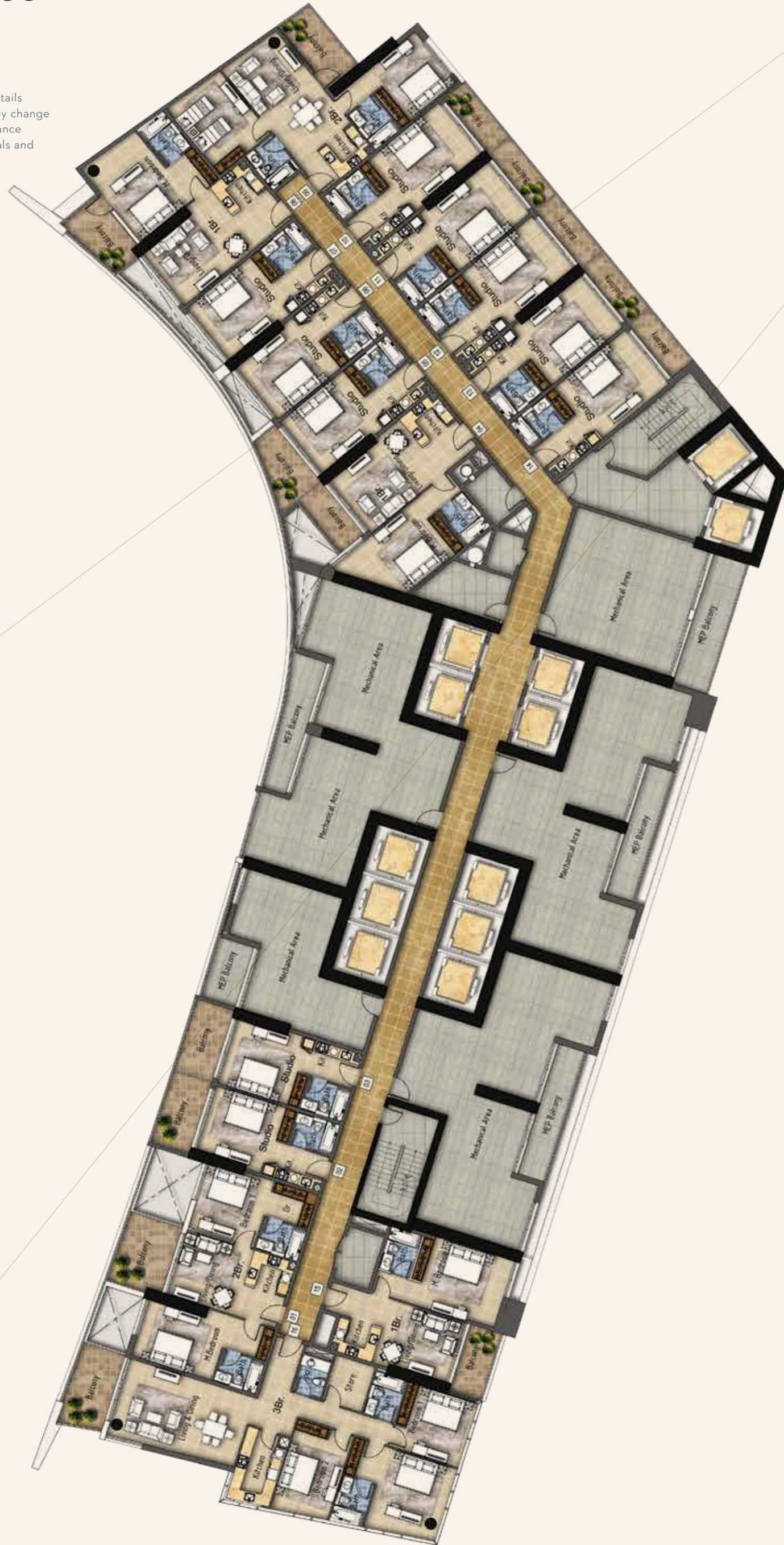
TOWER B - HOTEL APARTMENTS TYPICAL FLOOR 12-35

All pictures, plans, layouts, information, data and details included in this brochure are indicative only and may change at any time up to the final 'as built' status in accordance with final designs of the project, regulatory approvals and planning permissions.



TOWER B - HOTEL APARTMENTS
TYPICAL FLOOR **36**

All pictures, plans, layouts, information, data and details included in this brochure are indicative only and may change at any time up to the final 'as built' status in accordance with final designs of the project, regulatory approvals and planning permissions.



TOWER B - HOTEL APARTMENTS
TYPICAL FLOOR **37**

All pictures, plans, layouts, information, data and details included in this brochure are indicative only and may change at any time up to the final 'as built' status in accordance with final designs of the project, regulatory approvals and planning permissions.



TOWER B - HOTEL APARTMENTS
TYPICAL FLOOR **38-59**

All pictures, plans, layouts, information, data and details included in this brochure are indicative only and may change at any time up to the final 'as built' status in accordance with final designs of the project, regulatory approvals and planning permissions.



TOWER B - HOTEL APARTMENTS
TYPICAL FLOOR **60-62**

All pictures, plans, layouts, information, data and details included in this brochure are indicative only and may change at any time up to the final 'as built' status in accordance with final designs of the project, regulatory approvals and planning permissions.





CONTACT US

Toll Free : 800 37373

Hotline : +971 52 754 3244

Email: sales@drehomes.com

Visit Us For More Info:-

<https://drehomes.com/property/aykon-city-apartments/>

DAMAC