

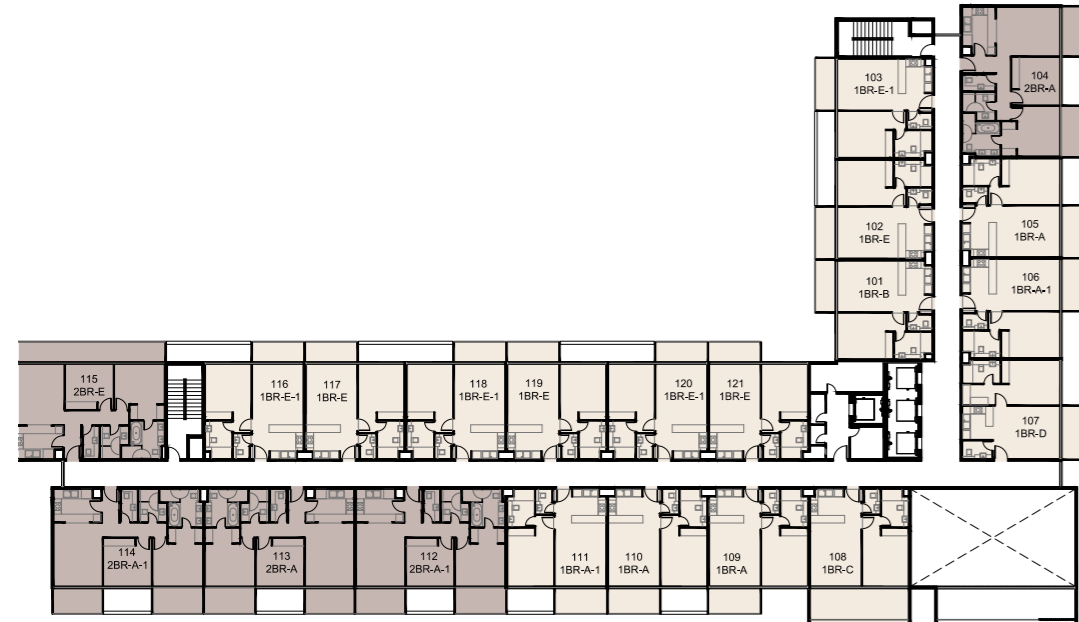
VIDA

RESIDENCES

ALJADA



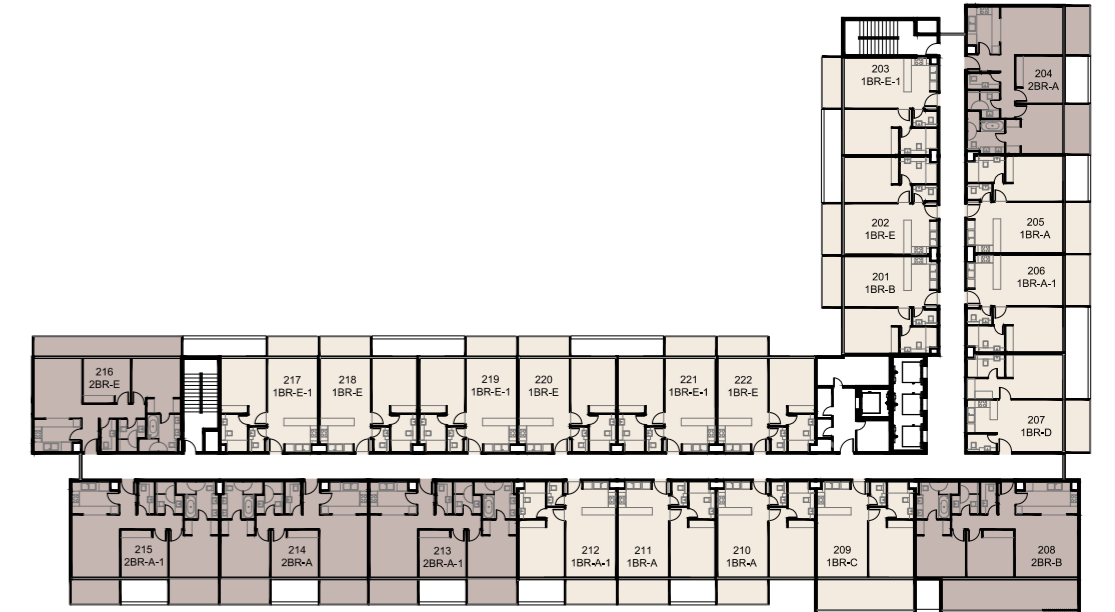
1st Floor



1 BED
2 BED



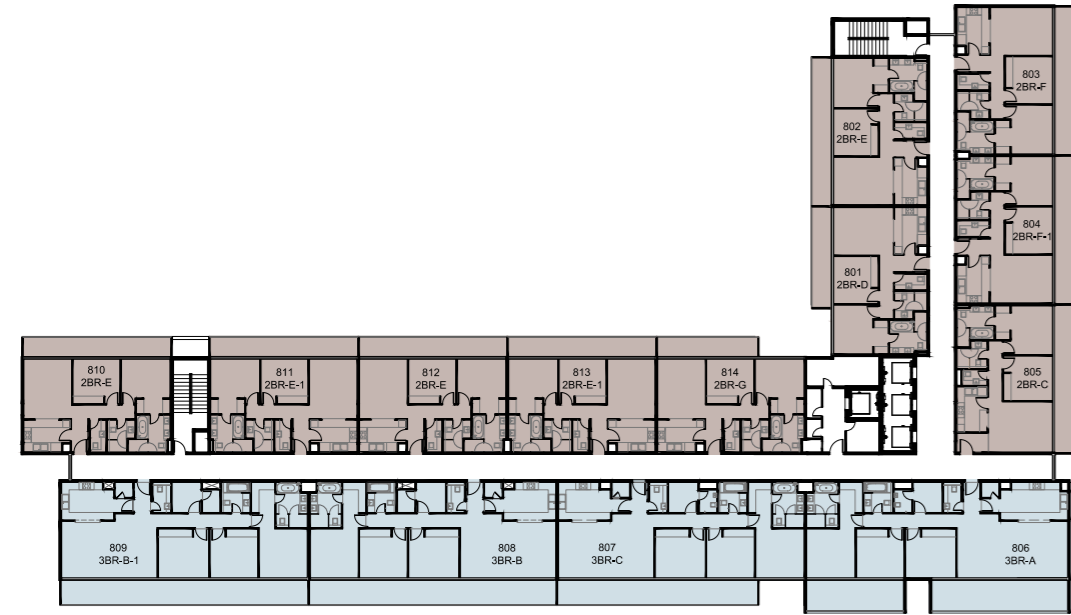
2nd - 7th Floor



1 BED
2 BED



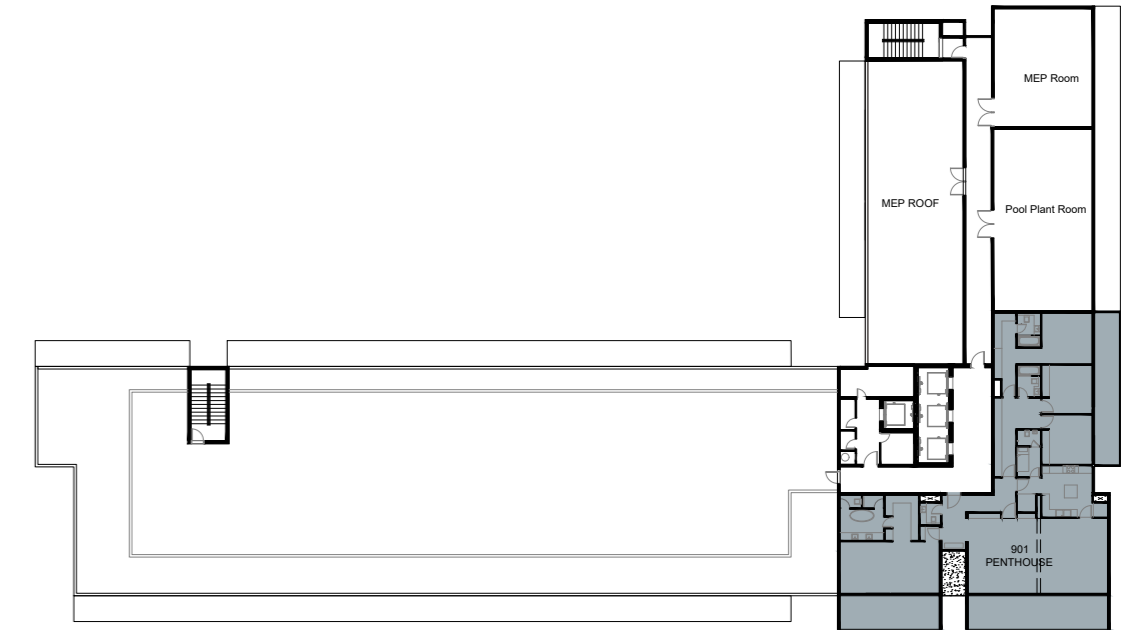
8th Floor



2 BED
3 BED



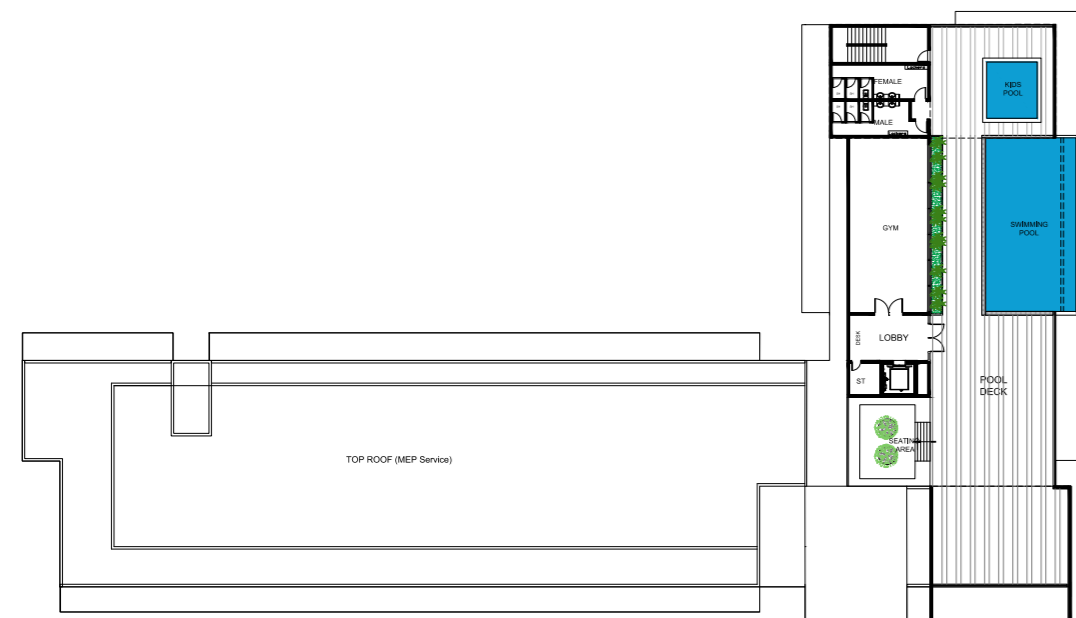
9th Floor



PENTHOUSE

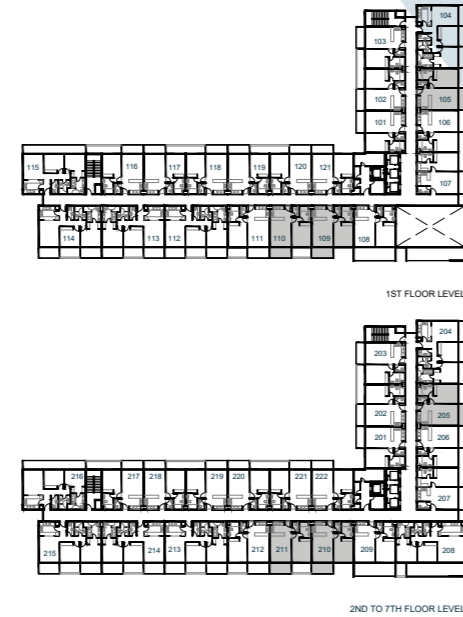
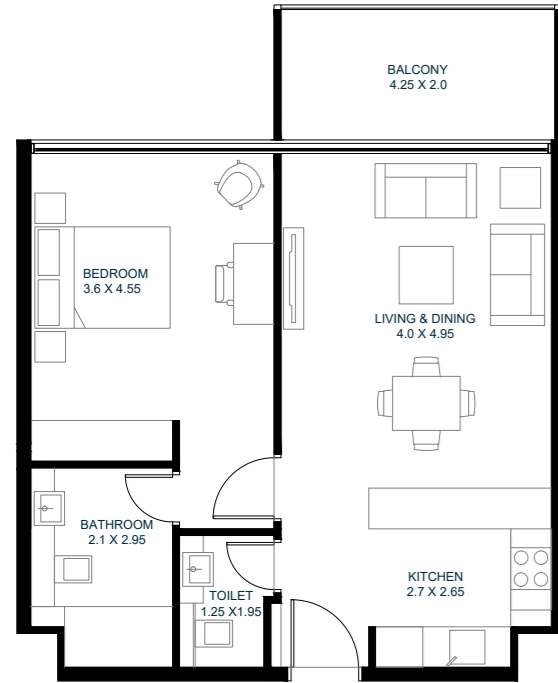


Roof





1 Bedroom A



Unit area: 672 SqFt (62.40 Sqm) | Balcony area: 91 SqFt (8.40 Sqm) | Total area: 763 SqFt (70.80 Sqm)

1-Measurements are indicative 'finish to finish' in Metric & Imperial excluding construction tolerance. 2-Plots/units dimensions may vary from brochure; 3-All images used are for illustrative purposes only. 4-Unless stated otherwise, all fittings and interior decorative items shown are for illustrative purposes only. 5-The developer reserves the right to make alterations, at its absolute discretion, without any liability whatsoever up to the final 'as built' status.

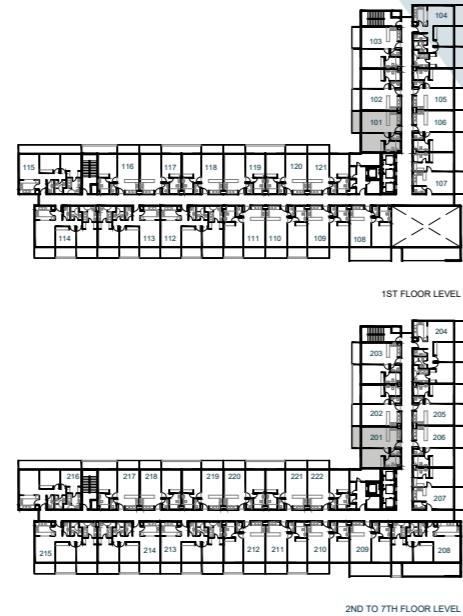
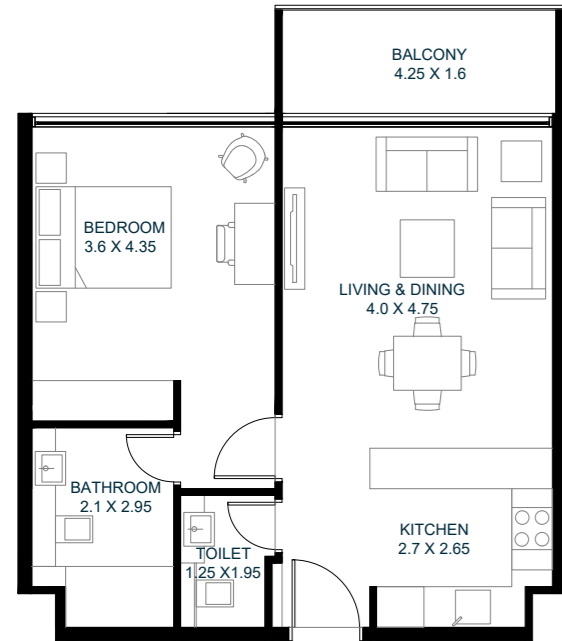
1 Bedroom A -1



Unit area: 672 SqFt (62.40 Sqm) | Balcony area: 91 SqFt (8.40 Sqm) | Total area: 763 SqFt (70.80 Sqm)

1-Measurements are indicative 'finish to finish' in Metric & Imperial excluding construction tolerance. 2-Plots/units dimensions may vary from brochure; 3-All images used are for illustrative purposes only. 4-Unless stated otherwise, all fittings and interior decorative items shown are for illustrative purposes only. 5-The developer reserves the right to make alterations, at its absolute discretion, without any liability whatsoever up to the final 'as built' status.

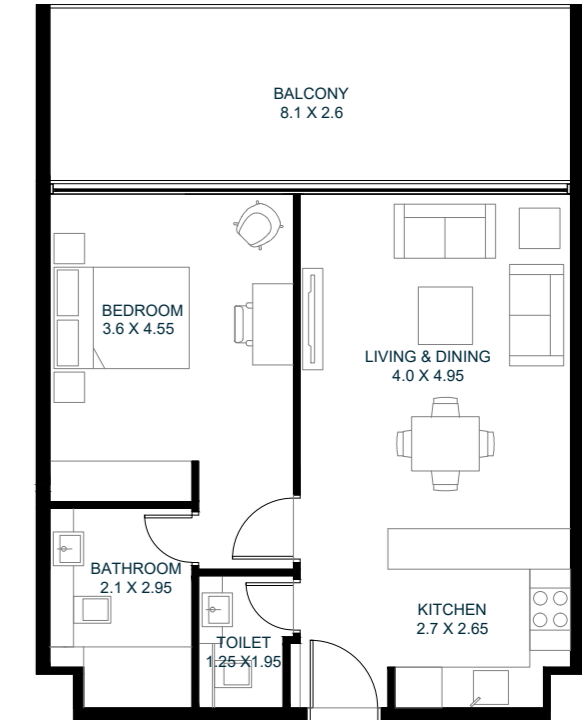
1 Bedroom B



Unit area: 665 SqFt (61.70 Sqm) | Balcony area: 71 SqFt (6.60 Sqm) | Total area: 736 SqFt (68.30 Sqm)

1-Measurements are indicative 'finish to finish' in Metric & Imperial excluding construction tolerance. 2-Plots/units dimensions may vary from brochure; 3-All images used are for illustrative purposes only. 4-Unless stated otherwise, all fittings and interior decorative items shown are for illustrative purposes only. 5-The developer reserves the right to make alterations, at its absolute discretion, without any liability whatsoever up to the final 'as built' status.

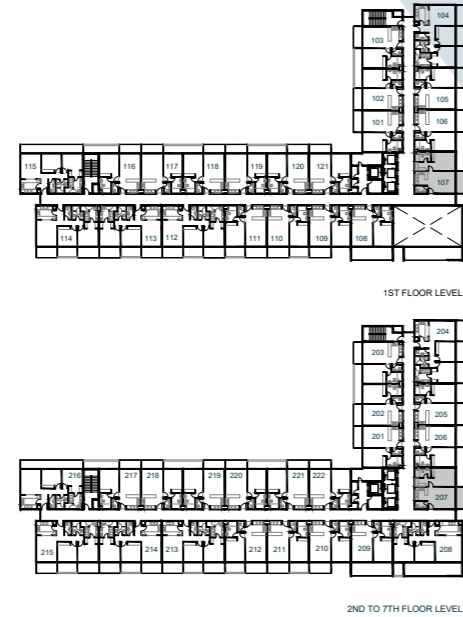
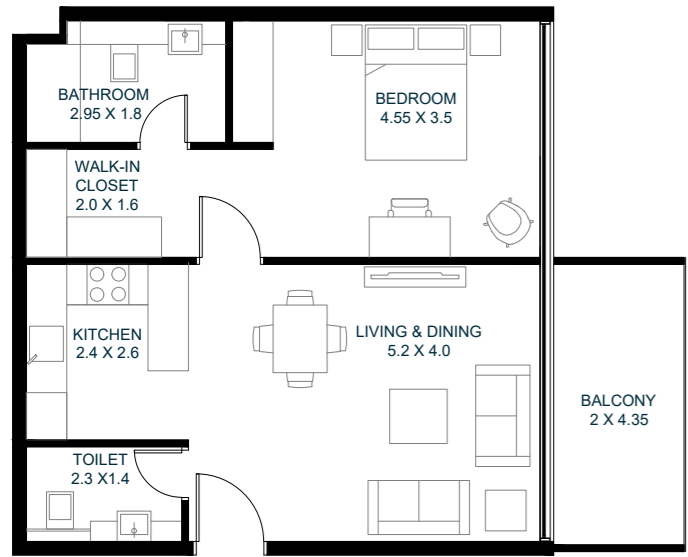
1 Bedroom C



Unit area: 682 SqFt (63.30 Sqm) | Balcony area: 224 SqFt (20.80 Sqm) | Total area: 906 SqFt (84.10 Sqm)

1-Measurements are indicative 'finish to finish' in Metric & Imperial excluding construction tolerance. 2-Plots/units dimensions may vary from brochure; 3-All images used are for illustrative purposes only. 4-Unless stated otherwise, all fittings and interior decorative items shown are for illustrative purposes only. 5-The developer reserves the right to make alterations, at its absolute discretion, without any liability whatsoever up to the final 'as built' status.

1 Bedroom D



Unit area: 687 SqFt (63.80 Sqm) | Balcony area: 93 SqFt (8.60 Sqm) | Total area: 780 SqFt (72.40 Sqm)

1-Measurements are indicative 'finish to finish' in Metric & Imperial excluding construction tolerance. 2-Plots/units dimensions may vary from brochure; 3-All images used are for illustrative purposes only. 4-Unless stated otherwise, all fittings and interior decorative items shown are for illustrative purposes only. 5-The developer reserves the right to make alterations, at its absolute discretion, without any liability whatsoever up to the final 'as built' status.

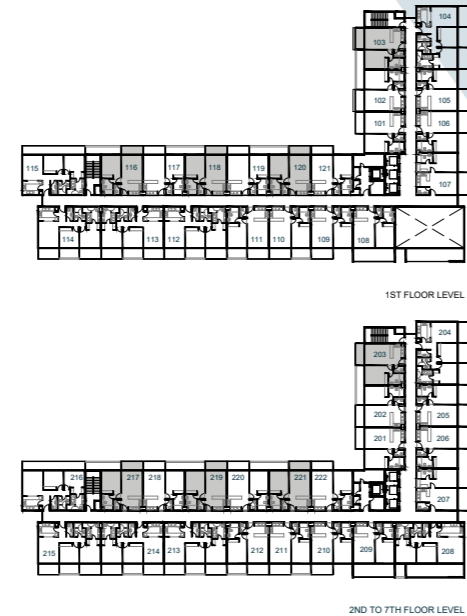
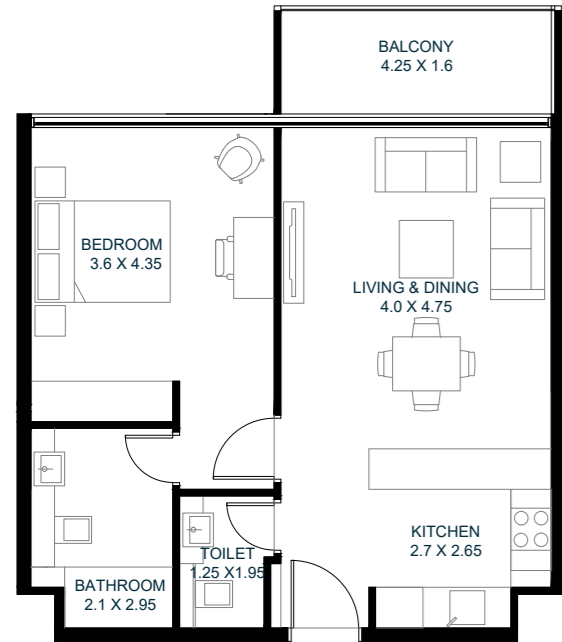
1 Bedroom E



Unit area: 656 SqFt (60.90 Sqm) | Balcony area: 71 SqFt (6.60 Sqm) | Total area: 727 SqFt (67.50 Sqm)

1-Measurements are indicative 'finish to finish' in Metric & Imperial excluding construction tolerance. 2-Plots/units dimensions may vary from brochure; 3-All images used are for illustrative purposes only. 4-Unless stated otherwise, all fittings and interior decorative items shown are for illustrative purposes only. 5-The developer reserves the right to make alterations, at its absolute discretion, without any liability whatsoever up to the final 'as built' status.

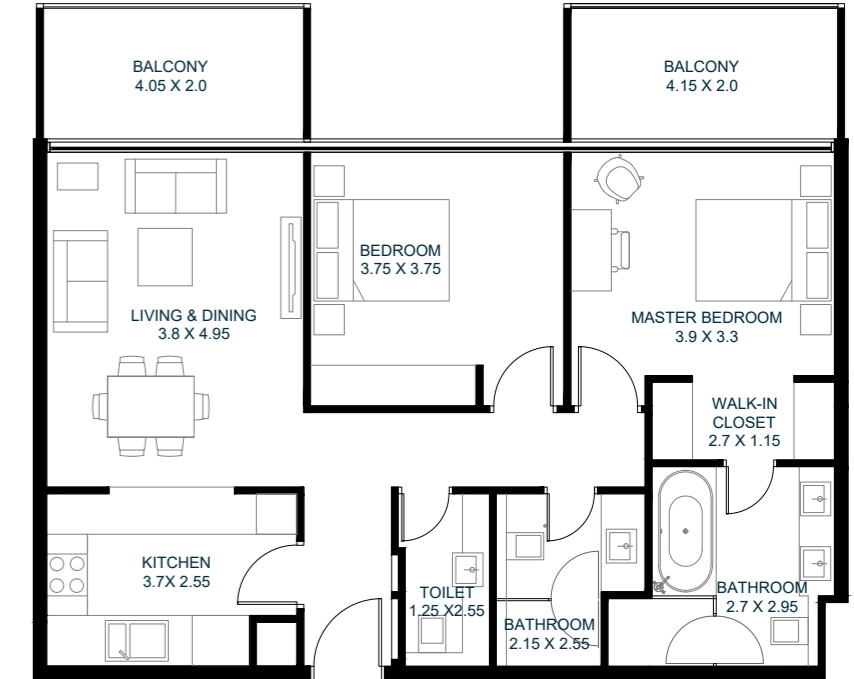
1 Bedroom E -1



Unit area: 656 SqFt (60.90 Sqm) | Balcony area: 71 SqFt (6.60 Sqm) | Total area: 727 SqFt (67.50 Sqm)

1-Measurements are indicative 'finish to finish' in Metric & Imperial excluding construction tolerance. 2-Plots/units dimensions may vary from brochure; 3-All images used are for illustrative purposes only. 4-Unless stated otherwise, all fittings and interior decorative items shown are for illustrative purposes only. 5-The developer reserves the right to make alterations, at its absolute discretion, without any liability whatsoever up to the final 'as built' status.

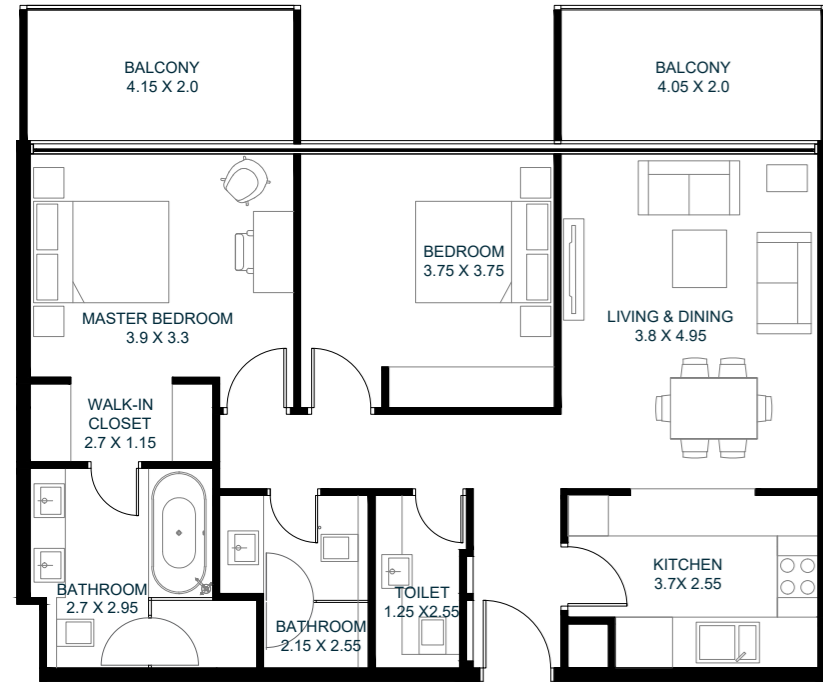
2 Bedroom A



Unit area: 1,014 SqFt (94.17 Sqm) | Balcony area: 172 SqFt (16.00 Sqm) | Total area: 1,186 SqFt (110.17 Sqm)

1-Measurements are indicative 'finish to finish' in Metric & Imperial excluding construction tolerance. 2-Plots/units dimensions may vary from brochure; 3-All images used are for illustrative purposes only. 4-Unless stated otherwise, all fittings and interior decorative items shown are for illustrative purposes only. 5-The developer reserves the right to make alterations, at its absolute discretion, without any liability whatsoever up to the final 'as built' status.

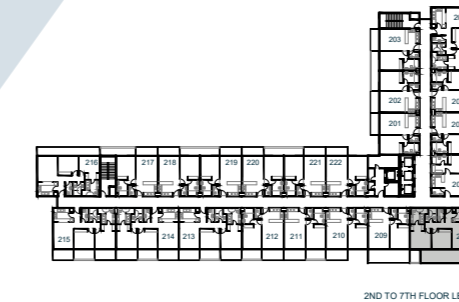
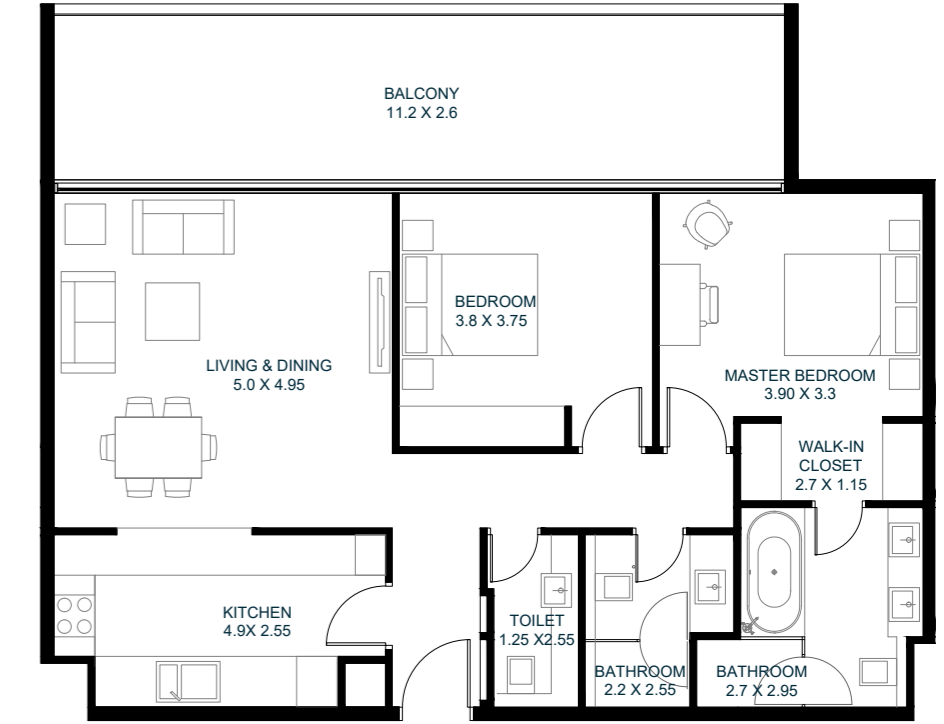
2 Bedroom A -1



Unit area: 1,014 SqFt (94.17 Sqm) | Balcony area: 172 SqFt (16.00 Sqm) | Total area: 1,186 SqFt (110.17 Sqm)

1-Measurements are indicative 'finish to finish' in Metric & Imperial excluding construction tolerance. 2-Plots/units dimensions may vary from brochure; 3-All images used are for illustrative purposes only. 4-Unless stated otherwise, all fittings and interior decorative items shown are for illustrative purposes only. 5-The developer reserves the right to make alterations, at its absolute discretion, without any liability whatsoever up to the final 'as built' status.

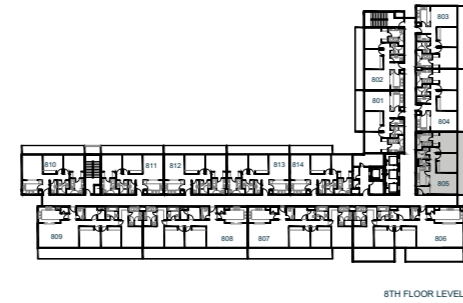
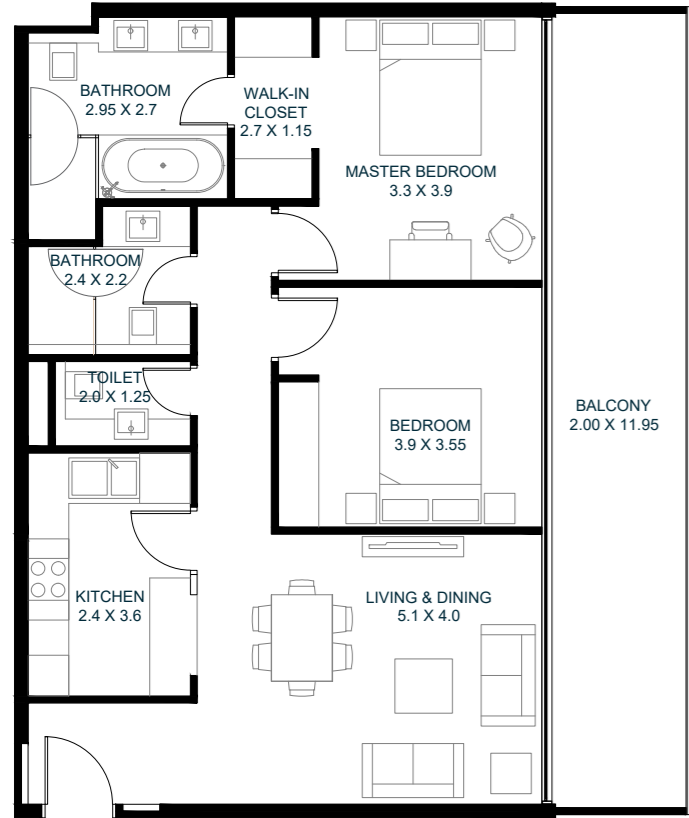
2 Bedroom B



Unit area: 1,118 SqFt (103.82 Sqm) | Balcony area: 313 SqFt (29.12 Sqm) | Total area: 1,431 SqFt (132.94 Sqm)

1-Measurements are indicative 'finish to finish' in Metric & Imperial excluding construction tolerance. 2-Plots/units dimensions may vary from brochure; 3-All images used are for illustrative purposes only. 4-Unless stated otherwise, all fittings and interior decorative items shown are for illustrative purposes only. 5-The developer reserves the right to make alterations, at its absolute discretion, without any liability whatsoever up to the final 'as built' status.

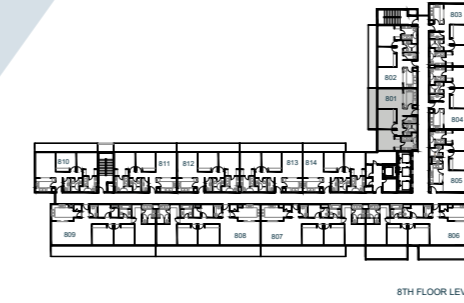
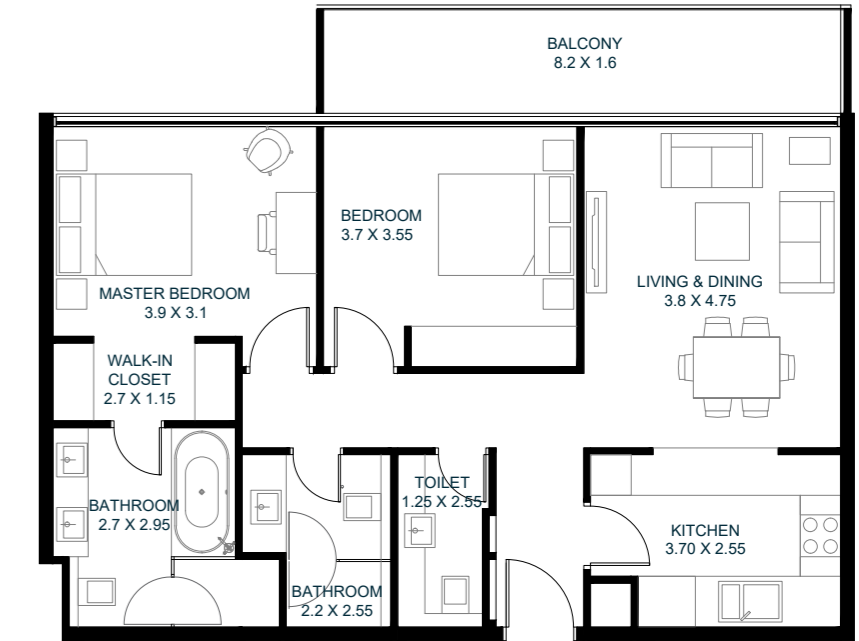
2 Bedroom C



Unit area: 1,020 SqFt (94.70 Sqm) | Balcony area: 256 SqFt (23.80 Sqm) | Total area: 1,276 SqFt (118.50 Sqm)

1-Measurements are indicative 'finish to finish' in Metric & Imperial excluding construction tolerance. 2-Plots/units dimensions may vary from brochure; 3-All images used are for illustrative purposes only. 4-Unless stated otherwise, all fittings and interior decorative items shown are for illustrative purposes only. 5-The developer reserves the right to make alterations, at its absolute discretion, without any liability whatsoever up to the final 'as built' status.

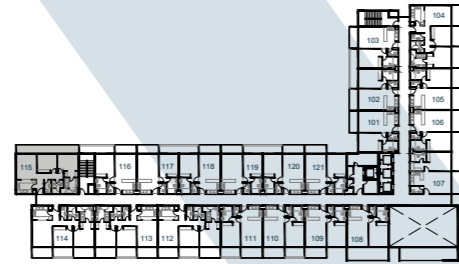
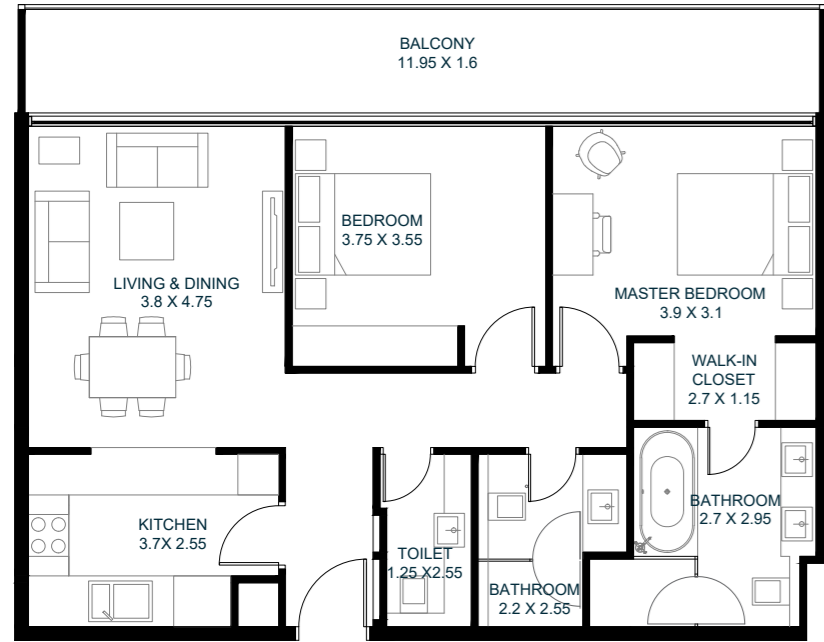
2 Bedroom D



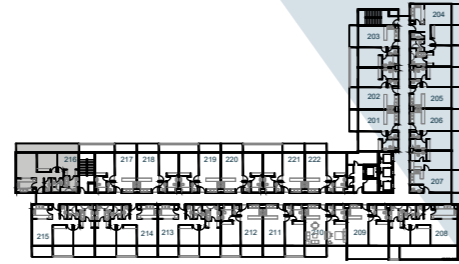
Unit area: 989 SqFt (91.80 Sqm) | Balcony area: 135 SqFt (12.60 Sqm) | Total area: 1,124 SqFt (104.40 Sqm)

1-Measurements are indicative 'finish to finish' in Metric & Imperial excluding construction tolerance. 2-Plots/units dimensions may vary from brochure; 3-All images used are for illustrative purposes only. 4-Unless stated otherwise, all fittings and interior decorative items shown are for illustrative purposes only. 5-The developer reserves the right to make alterations, at its absolute discretion, without any liability whatsoever up to the final 'as built' status.

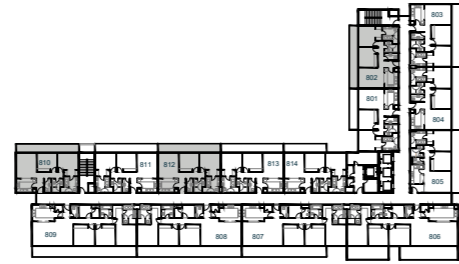
2 Bedroom E



1ST FLOOR LEVEL



2ND TO 7TH FLOOR LEVEL

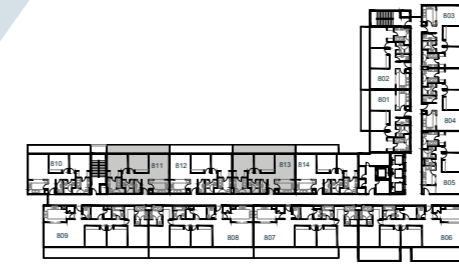
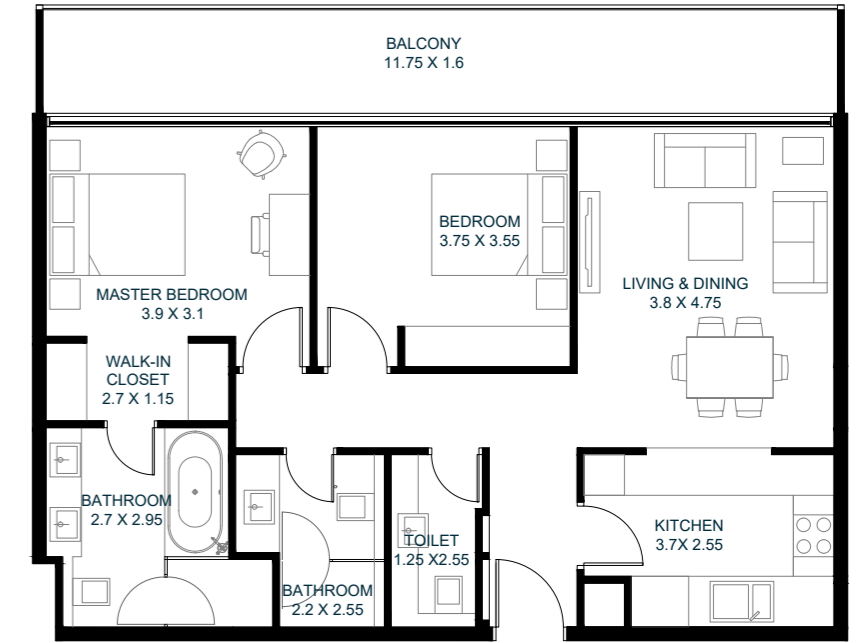


8TH FLOOR LEVEL

Unit area: 989 SqFt (91.80 Sqm) | Balcony area: 204 SqFt (18.96 Sqm) | Total area: 1,193 SqFt (110.76 Sqm)

1-Measurements are indicative 'finish to finish' in Metric & Imperial excluding construction tolerance. 2-Plots/units dimensions may vary from brochure; 3-All images used are for illustrative purposes only. 4-Unless stated otherwise, all fittings and interior decorative items shown are for illustrative purposes only. 5-The developer reserves the right to make alterations, at its absolute discretion, without any liability whatsoever up to the final 'as built' status.

2 Bedroom E -1

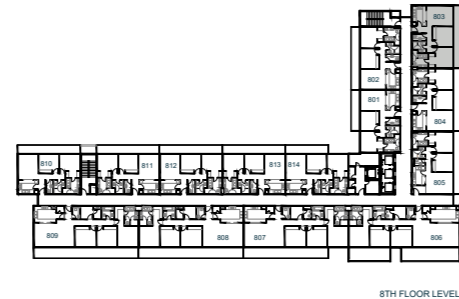
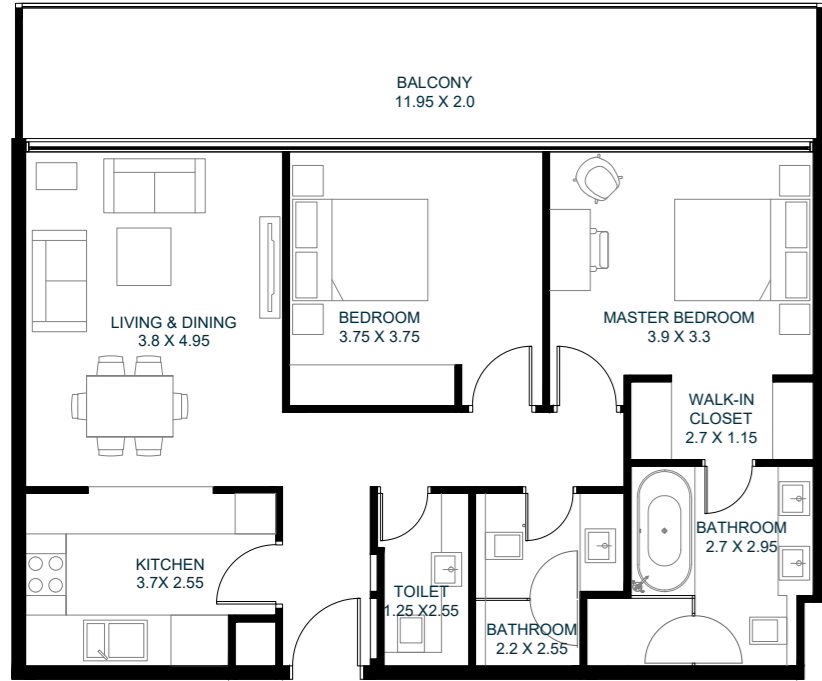


8TH FLOOR LEVEL

Unit area: 989 SqFt (91.80 Sqm) | Balcony area: 204 SqFt (18.96 Sqm) | Total area: 1,193 SqFt (110.76 Sqm)

1-Measurements are indicative 'finish to finish' in Metric & Imperial excluding construction tolerance. 2-Plots/units dimensions may vary from brochure; 3-All images used are for illustrative purposes only. 4-Unless stated otherwise, all fittings and interior decorative items shown are for illustrative purposes only. 5-The developer reserves the right to make alterations, at its absolute discretion, without any liability whatsoever up to the final 'as built' status.

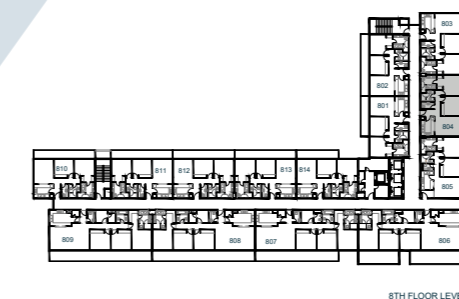
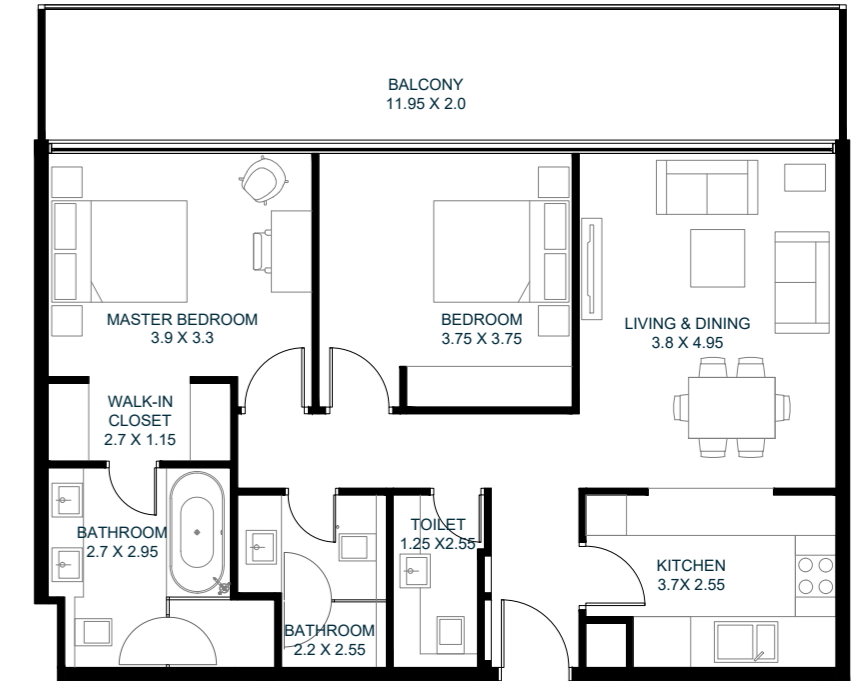
2 Bedroom F



Unit area: 1,014 SqFt (94.16 Sqm) | Balcony area: 255 SqFt (23.70 Sqm) | Total area: 1,269 SqFt (117.86 Sqm)

1-Measurements are indicative 'finish to finish' in Metric & Imperial excluding construction tolerance. 2-Plots/units dimensions may vary from brochure; 3-All images used are for illustrative purposes only. 4-Unless stated otherwise, all fittings and interior decorative items shown are for illustrative purposes only. 5-The developer reserves the right to make alterations, at its absolute discretion, without any liability whatsoever up to the final 'as built' status.

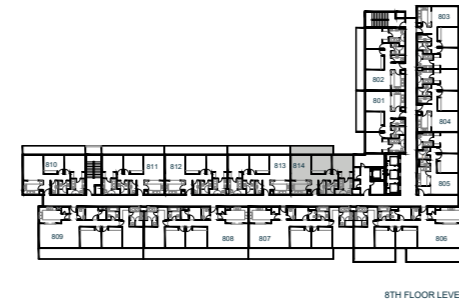
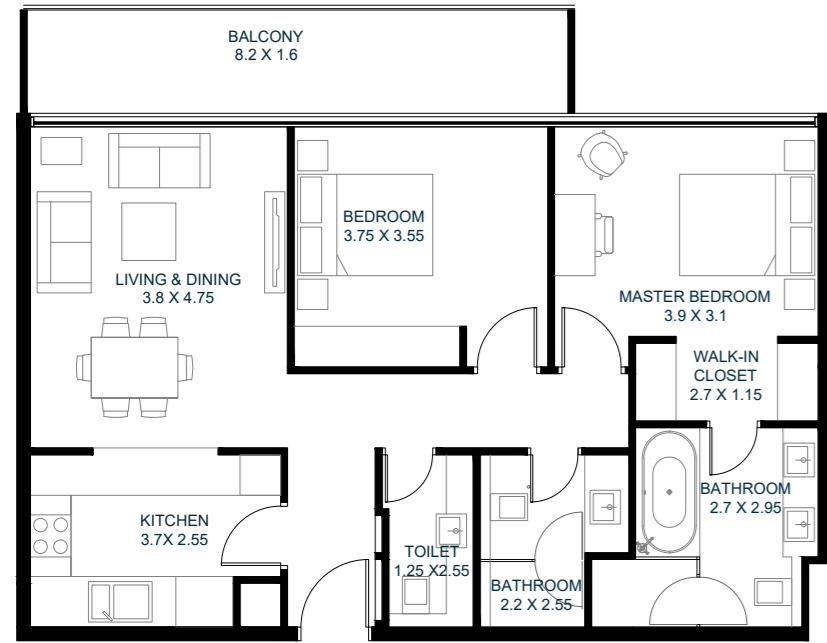
2 Bedroom F -1



Unit area: 1,014 SqFt (94.16 Sqm) | Balcony area: 255 SqFt (23.70 Sqm) | Total area: 1,269 SqFt (117.86 Sqm)

1-Measurements are indicative 'finish to finish' in Metric & Imperial excluding construction tolerance. 2-Plots/units dimensions may vary from brochure; 3-All images used are for illustrative purposes only. 4-Unless stated otherwise, all fittings and interior decorative items shown are for illustrative purposes only. 5-The developer reserves the right to make alterations, at its absolute discretion, without any liability whatsoever up to the final 'as built' status.

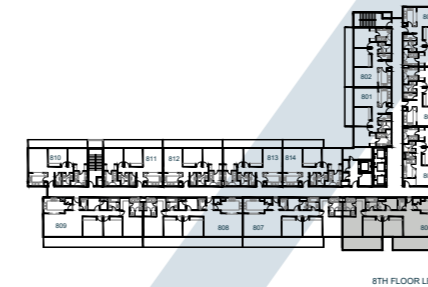
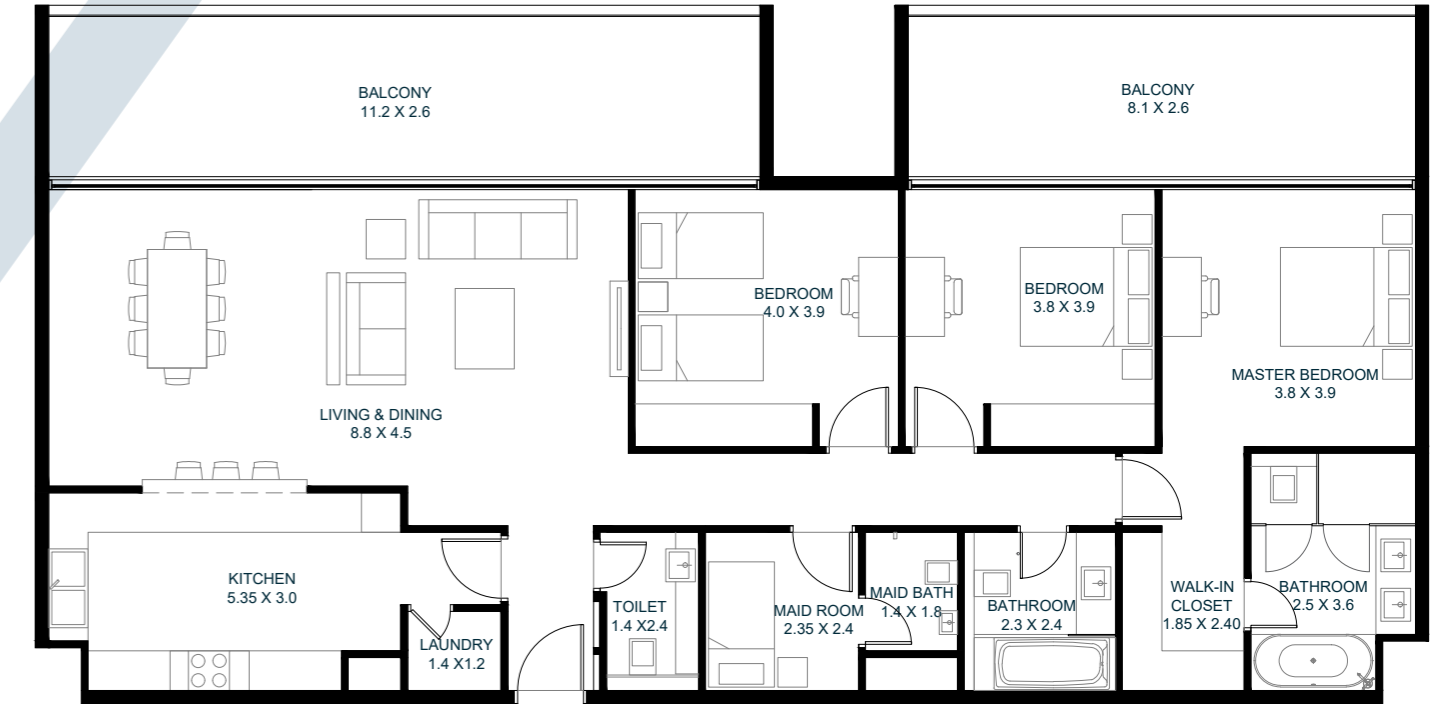
2 Bedroom G



Unit area: 989 SqFt (91.80 Sqm) | Balcony area: 140 SqFt (13.00 Sqm) | Total area: 1,129 SqFt (104.80 Sqm)

1-Measurements are indicative 'finish to finish' in Metric & Imperial excluding construction tolerance. 2-Plots/units dimensions may vary from brochure; 3-All images used are for illustrative purposes only. 4-Unless stated otherwise, all fittings and interior decorative items shown are for illustrative purposes only. 5-The developer reserves the right to make alterations, at its absolute discretion, without any liability whatsoever up to the final 'as built' status.

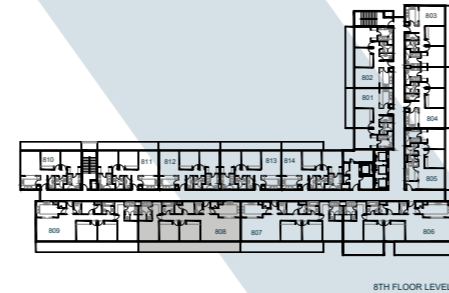
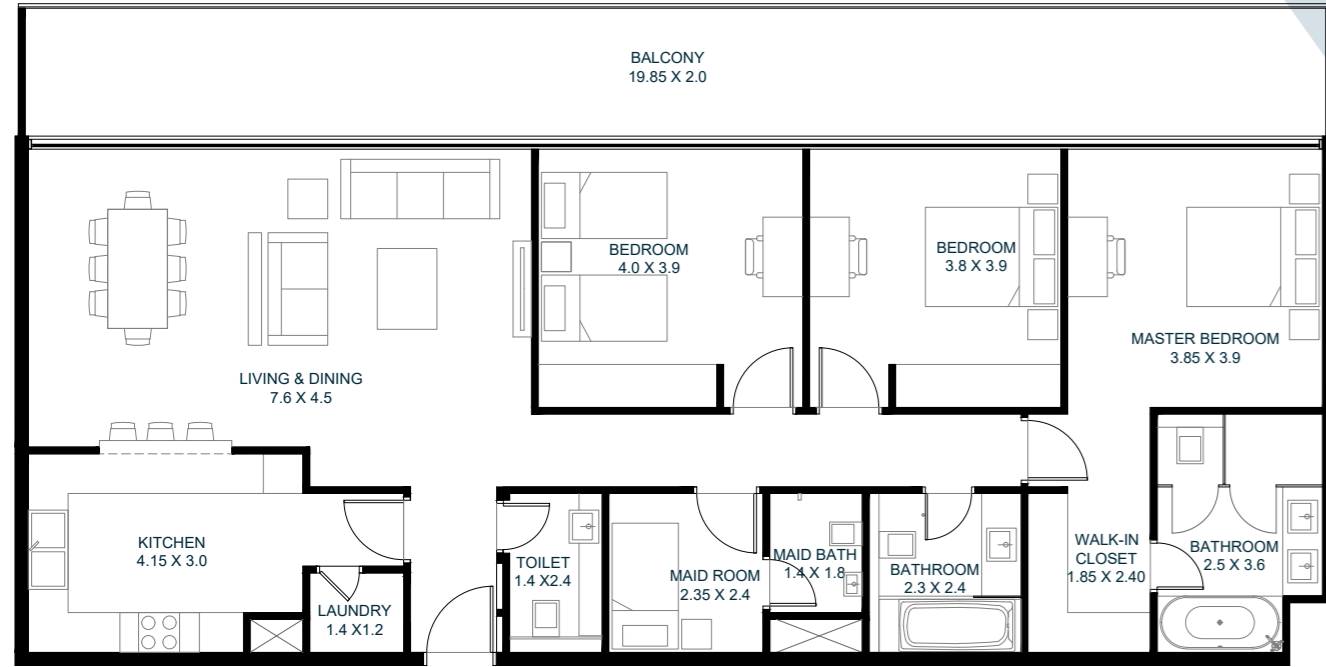
3 Bedroom A



Unit area: 1,788 SqFt (166.10 Sqm) | Balcony area: 538 SqFt (49.90 Sqm) | Total area: 2,326 SqFt (216.00 Sqm)

1-Measurements are indicative 'finish to finish' in Metric & Imperial excluding construction tolerance. 2-Plots/units dimensions may vary from brochure; 3-All images used are for illustrative purposes only. 4-Unless stated otherwise, all fittings and interior decorative items shown are for illustrative purposes only. 5-The developer reserves the right to make alterations, at its absolute discretion, without any liability whatsoever up to the final 'as built' status.

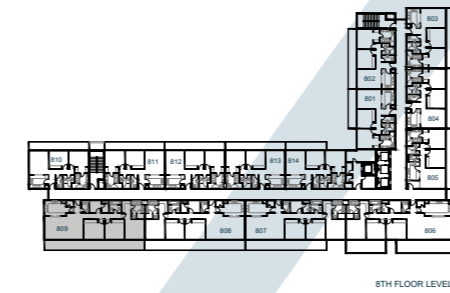
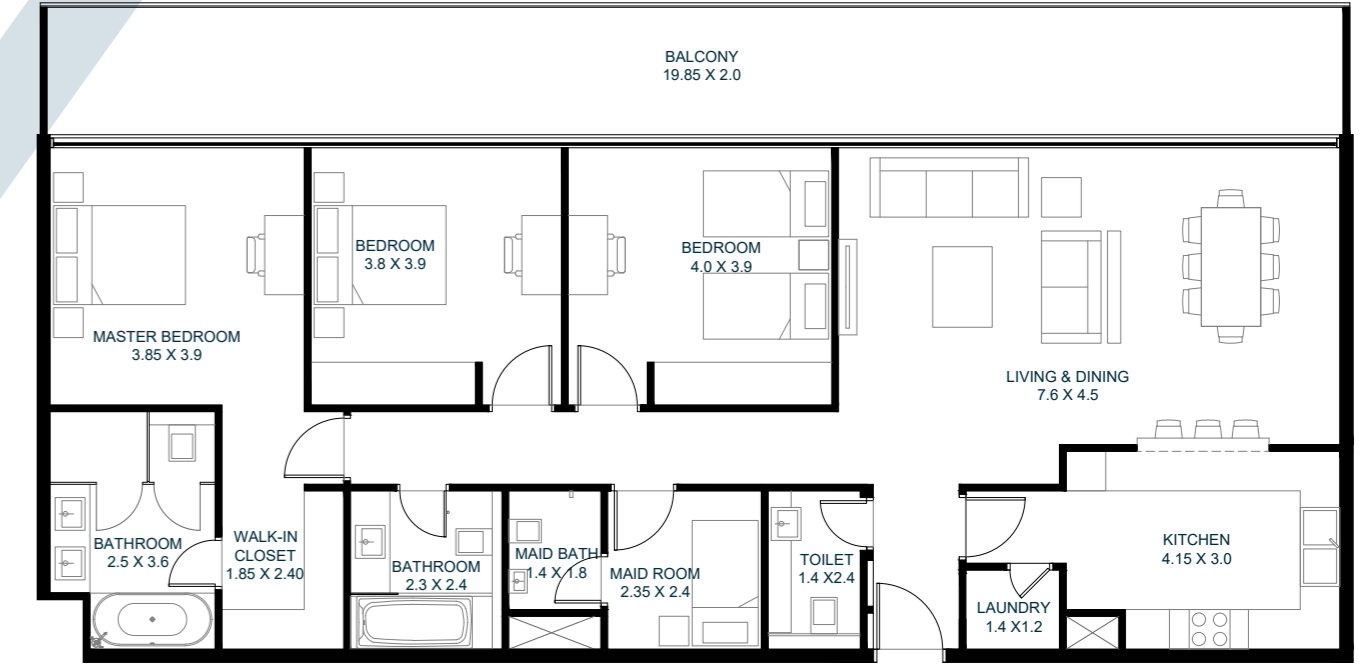
3 Bedroom B



Unit area: 1,683 SqFt (156.30 Sqm) | Balcony area: 425 SqFt (39.50 Sqm) | Total area: 2,108 SqFt (195.80 Sqm)

1-Measurements are indicative 'finish to finish' in Metric & Imperial excluding construction tolerance. 2-Plots/units dimensions may vary from brochure; 3-All images used are for illustrative purposes only. 4-Unless stated otherwise, all fittings and interior decorative items shown are for illustrative purposes only. 5-The developer reserves the right to make alterations, at its absolute discretion, without any liability whatsoever up to the final 'as built' status.

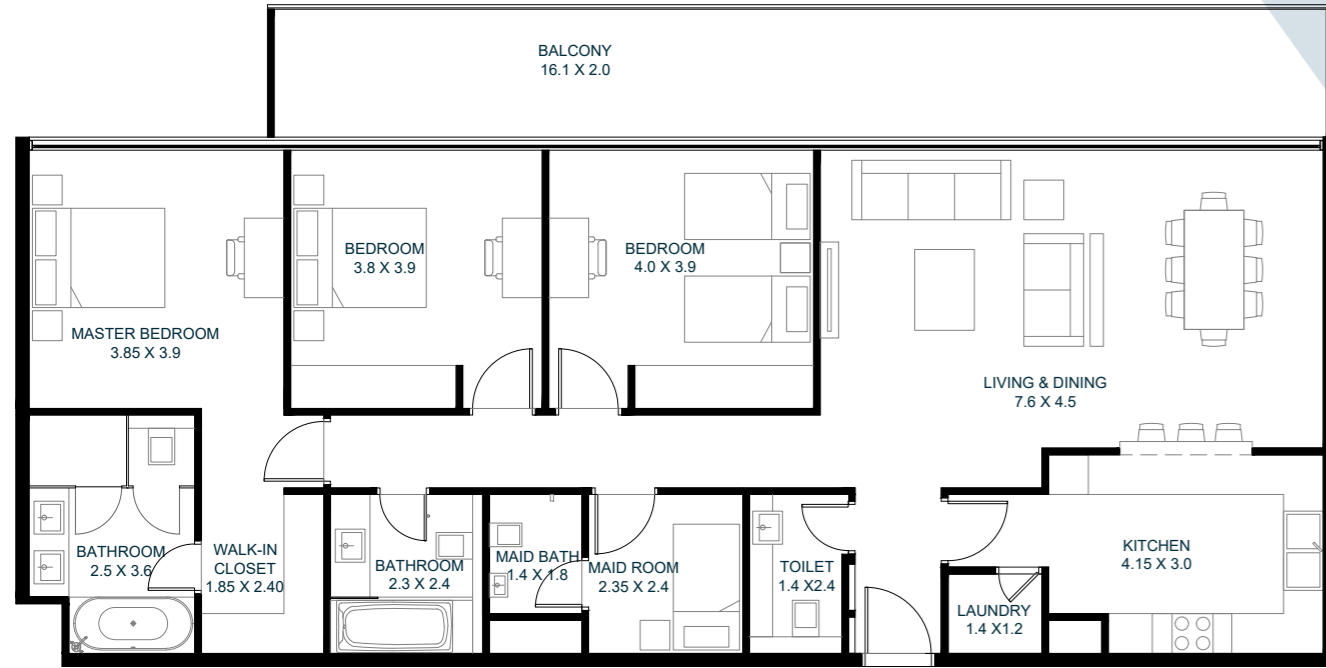
3 Bedroom B -1



Unit area: 1,683 SqFt (156.30 Sqm) | Balcony area: 425 SqFt (39.50 Sqm) | Total area: 2,108 SqFt (195.80 Sqm)

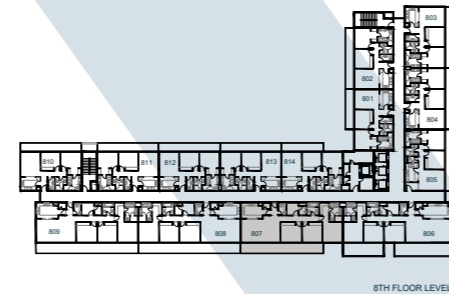
1-Measurements are indicative 'finish to finish' in Metric & Imperial excluding construction tolerance. 2-Plots/units dimensions may vary from brochure; 3-All images used are for illustrative purposes only. 4-Unless stated otherwise, all fittings and interior decorative items shown are for illustrative purposes only. 5-The developer reserves the right to make alterations, at its absolute discretion, without any liability whatsoever up to the final 'as built' status.

3 Bedroom C



Unit area: 1,683 SqFt (156.30 Sqm) | Balcony area: 344 SqFt (32.00 Sqm) | Total area: 2,027 SqFt (188.30 Sqm)

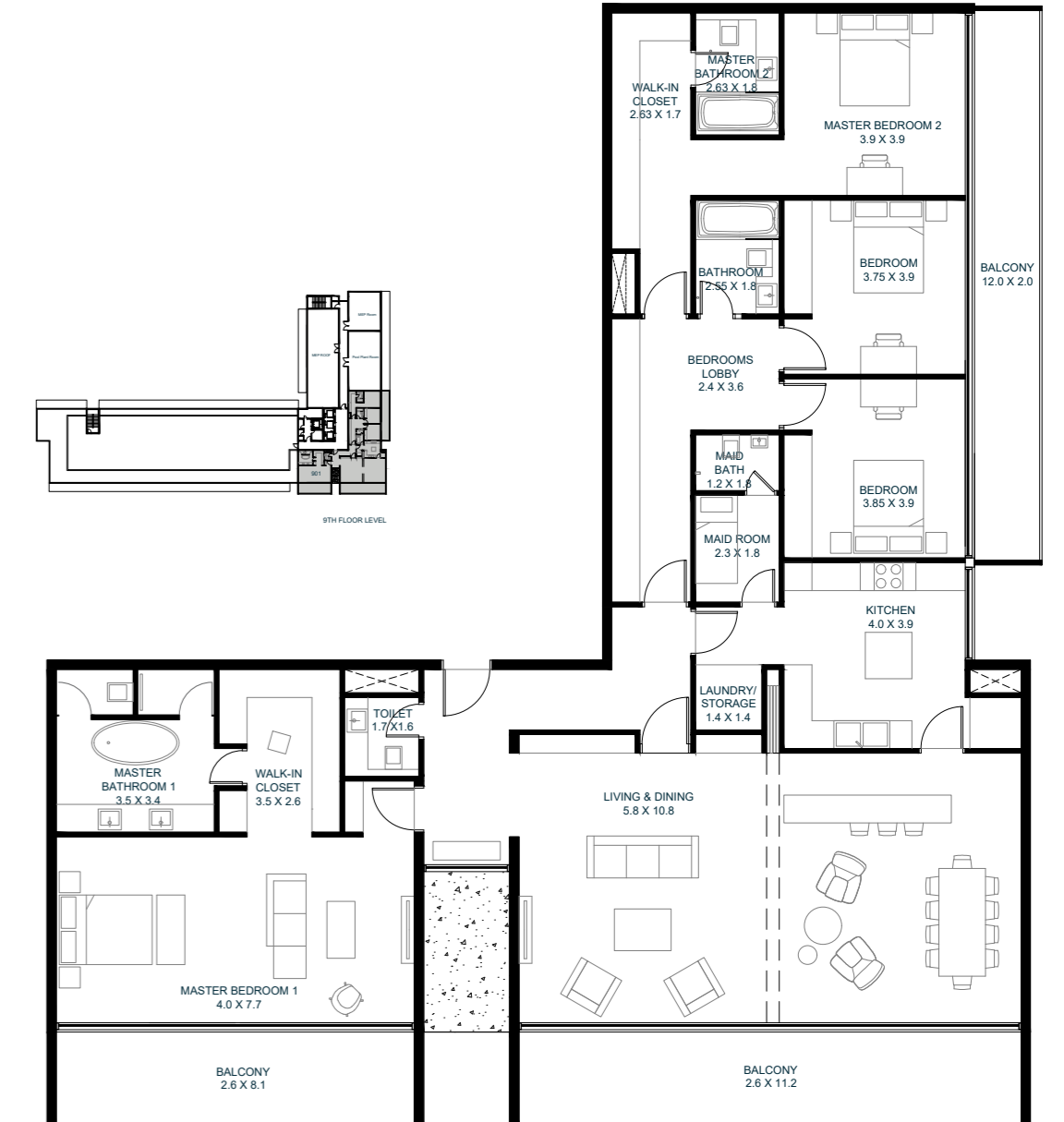
1-Measurements are indicative 'finish to finish' in Metric & Imperial excluding construction tolerance. 2-Plots/units dimensions may vary from brochure; 3-All images used are for illustrative purposes only. 4-Unless stated otherwise, all fittings and interior decorative items shown are for illustrative purposes only. 5-The developer reserves the right to make alterations, at its absolute discretion, without any liability whatsoever up to the final 'as built' status.



Unit area: 2,948 SqFt (273.80 Sqm)
Balcony area: 798 SqFt (74.20 Sqm)
Total area: 3,746 SqFt (348.00 Sqm)

1-Measurements are indicative 'finish to finish' in Metric & Imperial excluding construction tolerance. 2-Plots/units dimensions may vary from brochure; 3-All images used are for illustrative purposes only. 4-Unless stated otherwise, all fittings and interior decorative items shown are for illustrative purposes only. 5-The developer reserves the right to make alterations, at its absolute discretion, without any liability whatsoever up to the final 'as built' status.

Penthouse



58

VIDA
RESIDENCES
ALJADA