

*Jumeirah Islands*

## JUMEIRAH ISLANDS TOWNHOUSES





## AN INTEGRATED COMMUNITY IN THE HEART OF NEW DUBAI

Jumeirah Islands is an integrated residential community located in a prime location in the heart of New Dubai, with easy access to Sheikh Zayed Road and Al Khail Road. This unique development of townhouses, are set amongst a backdrop of lakes, park, spectacular water features and a large swimming pool. The townhouses provide extravagant waterfront views and are in close proximity to essential amenities, including select retail, restaurants, mosques, schools, a community centre and lush landscaped parks.





## DESIGNED TO EMBRACE THE PRINCIPLES OF FAMILY LIVING IN AN URBAN SETTING

Each of the townhouses makes use of the generous space available in innovative ways. Every residence comes with a garage for two cars, outdoor terracing over two floors and en-suite bathrooms for each bedroom. In addition, the family areas benefit from large lounges and dining rooms. The high quality fittings throughout each villa have been carefully selected to perfectly complement their design. All fittings have a modern flavour, while the design of the townhouse fits perfectly with the beautiful surroundings of the garden.





# FOUR-BEDROOM TOWNHOUSE

With a garden and a veranda, the ground floor of this villa has everything you need to relax and unwind. Choose the ground floor terrace to enjoy the evening, or go upstairs to two expansive terraces, where you can spend Dubai winters looking out over the tranquil Jumeirah Islands lakes and parks. Careful attention has been given to the design of the functional roof that doubles as a spacious terrace with views of the Meadows, Jumeirah Islands lakes, or the park.

### Main Entrance and living area finishes

- Floor tiles in porcelain
- Stair steps finished in stone
- Wooden doors

### Bedroom finishes

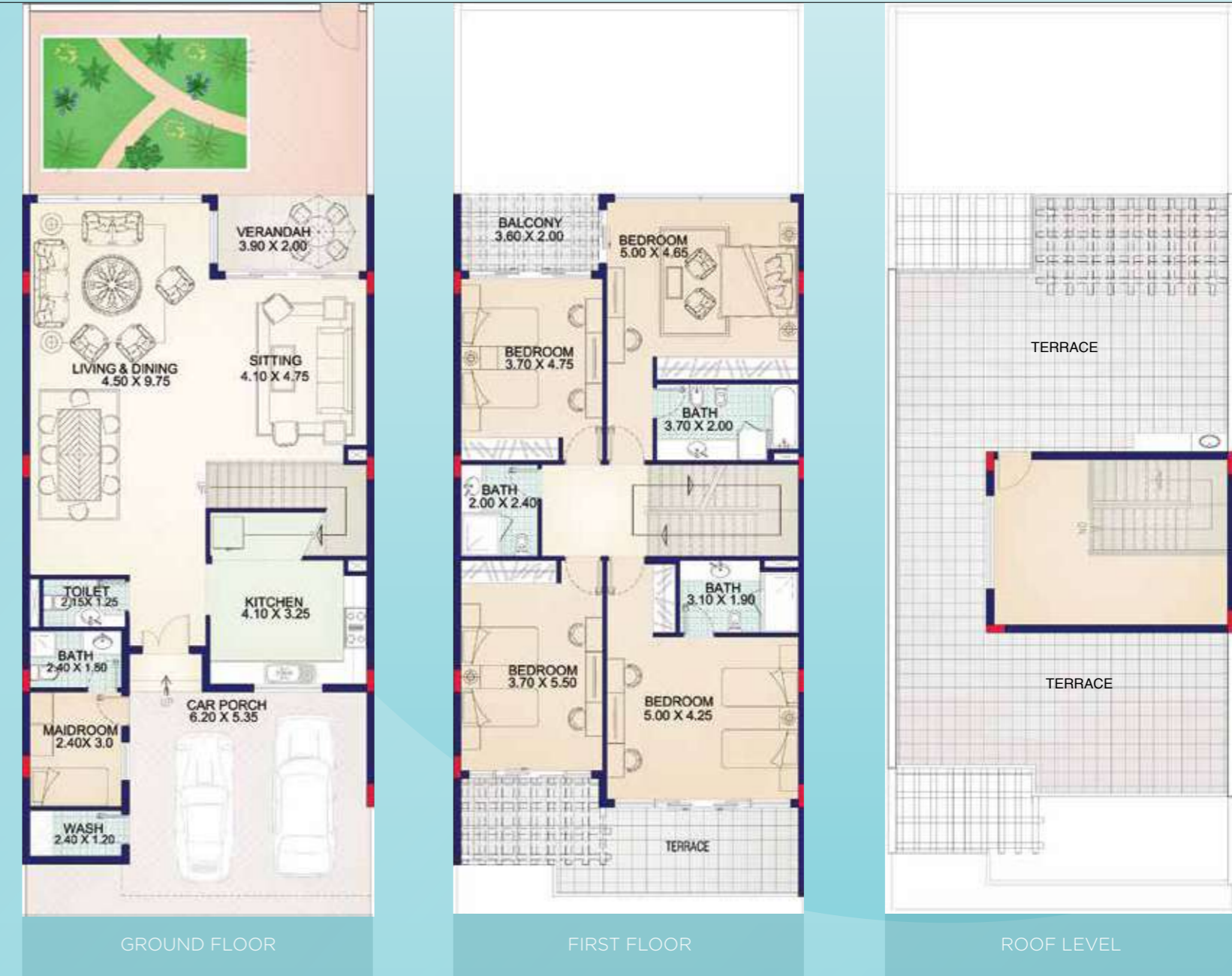
- Ceramic floor tiles
- Wooden doors
- Built-in wardrobes

### Kitchen finishes

- Ceramic floor and wall tiles
- Cabinets with stone counters

### Bathroom/Powder room finishes

- Ceramic floor and wall tiles
- Sanitary ware fixtures
- Built-in shower
- Bathtub and built-in shower in master bedroom
- Bathroom accessories and mixer
- Stone counters



Floor plan: Numbers, square footage and floor plans are approximate. Final dimensions, square footage and floor plans may vary.



# MASTER PLAN



The developer reserves the right to make revisions. All the measurements and drawings are approximate. This information is subject to change without notice. Don't scale drawings. Artistic renderings, landscaping and images are for illustrative purpose only and are subject to change without notice.

